

Feds To Begin Drive For First Place This Half In Game With Cocoa Tomorrow

By PETER SCHAAL
Bill Headley's second place Cocoa Indians will meet Bill Cobb's last place but up and coming Sanford Celeryfeds in an important Central Florida Baseball League game at Municipal Park here tomorrow afternoon at 3:30 o'clock.

The game is labeled as important because recent developments have placed Sanford, Cocoa, and Leesburg in a position to either win the first half pennant or, like Sanford, go into a tie with the Land for first place as the first half ends on July 4.

In other words, if Sanford could win seven straight while DeLand is losing seven straight, the Feds and Reds would have to play an extra game to decide the first half.

Cocoa, in second place and with seven games to play, is only five games from first place. By winning six out of its next seven games while DeLand is dropping all seven, the Indians would be the first half winners by one game.

Leesburg, six games out of first place, could nab the pennant by half a game by winning six of its next seven while DeLand is losing seven straight. Leesburg meets DeLand three more times including their game in Leesburg tomorrow.

Therefore, for the remainder of the first half, all four clubs should be fighting bitterly for the finish.

With the DeLand Reds in a hotting slump which finds Bill Robertson and Bill Lewis remaining as the dependable battery and other clubs having strengthened to where each is a potential threat either for first or second half honors, Central Florida fans appear to be in for several weeks of great baseball.

The Feds have their eyes on the first half flag, and tomorrow's win will demonstrate a sign that they are the most fractional club in the league.

Granted that they are the smartest players in the league, the Bill Palmer club will be able to match wits with the best Manager Headley has to offer.

Manager Cobb will have to start assignments on the line-up and the line-up will be the same as that which has won the games in every one of the last five games.

Tige Minor will be the starting hurler for the Celeryfeds. Speck Kinsey, pitcher, and the big, may go to the mound for the Indians.

If the Indians win tomorrow, it will mark the first time that the season's first pennant game will be the first game played by Cocoa in the first half.

Two new faces will be seen at second in the Feds' line-up. The youngsters, who played with Mount in the Georgia Florida League and have appeared to advantage in recent games for the Indians.

Probable starting line-up:
Cocoa, Harrell cf, Culbreth, 2b, Newthman rf, Joiner lb, Siskby, if, Smith c, Ewer 3b, Wylie ss, M. nor p; Sanford, Walker 2b, Hutch cf, Goode ss, Lates 3b, Mason if, Reed lf, Caldwell rf, Burkhardt c, Cobb p.

Official league batting marks still show that the DeLand Reds lead in almost every department of play, with Jim Robertson as the individual leader.

The Feds remain in third place in batting with a mark of 253 but the Indians are within six points of first place, holding a .371 mark to the Reds' .277 figure, Leesburg is last with a .221.

Official averages through Sunday:

Club	G	A	R	H	Av.
DeLand	17	559	195	185	.277
Cocoa	17	498	168	144	.275
Sanford	17	529	130	133	.253
Leesburg	15	194	74	121	.221

Player	G	A	R	H	Av.
Robertson, Del.	17	112	15	35	.414
Leahy, Del.	17	105	11	24	.314
Spencer, Leurg	11	24	3	10	.417
Walker, Cocoa	11	49	11	18	.353
Baker, Cocoa	11	40	2	15	.375
Smith, Cocoa	12	48	4	17	.354
Joiner, Cocoa	12	45	4	15	.333
Minor, Cocoa	17	49	7	15	.304

Player	G	A	R	H	Av.
Headley, Del.	17	115	4	7	.487
Palmer, Del.	17	115	4	7	.487
Palmer, Del.	17	115	4	7	.487
Palmer, Del.	17	115	4	7	.487

Player	G	A	R	H	Av.
Palmer, Del.	17	115	4	7	.487
Palmer, Del.	17	115	4	7	.487
Palmer, Del.	17	115	4	7	.487
Palmer, Del.	17	115	4	7	.487

Player	G	A	R	H	Av.
Palmer, Del.	17	115	4	7	.487
Palmer, Del.	17	115	4	7	.487
Palmer, Del.	17	115	4	7	.487
Palmer, Del.	17	115	4	7	.487

Player	G	A	R	H	Av.
Palmer, Del.	17	115	4	7	.487
Palmer, Del.	17	115	4	7	.487
Palmer, Del.	17	115	4	7	.487
Palmer, Del.	17	115	4	7	.487

Player	G	A	R	H	Av.
Palmer, Del.	17	115	4	7	.487
Palmer, Del.	17	115	4	7	.487
Palmer, Del.	17	115	4	7	.487
Palmer, Del.	17	115	4	7	.487

Player	G	A	R	H	Av.
Palmer, Del.	17	115	4	7	.487
Palmer, Del.	17	115	4	7	.487
Palmer, Del.	17	115	4	7	.487
Palmer, Del.	17	115	4	7	.487

Player	G	A	R	H	Av.
Palmer, Del.	17	115	4	7	.487
Palmer, Del.	17	115	4	7	.487
Palmer, Del.	17	115	4	7	.487
Palmer, Del.	17	115	4	7	.487

Player	G	A	R	H	Av.
Palmer, Del.	17	115	4	7	.487
Palmer, Del.	17	115	4	7	.487
Palmer, Del.	17	115	4	7	.487
Palmer, Del.	17	115	4	7	.487

Alabama Pitts Asks Landis For Ruling

ALBANY, N. Y., June 12.—(AP)—Edwin C. "Alabama" Pitts, former Sing Sing "college" baseball star, appealed to Commissioner Kenesaw Mountain Landis in Chicago Monday to grant him a hearing, after being barred from playing professional baseball by the unanimous decision of the executive committee of the national association of minor leagues here yesterday.

A contract Pitts had signed with the Albany Club of the International League, to play in the outfield, was voided by the committee's action. General Manager John J. Evers and Omer Joseph Cambria of the Albany Club, also appealed to Landis in a telegram last night. A third appeal was made to the commissioner in a wire that bore the signatures of the club executives and Pitts.

In the event that Pitts is not granted the right to take his place in the Albany outfield, Evers said yesterday he would quit the game in which he has been a national figure for more than a quarter of a century.

Gainesville Takes Lead In Win Over St. Augustine

GAINESVILLE, June 12.—The Gainesville Hawks had one big inning against St. Augustine here yesterday good for a full game lead in the North Florida league first half race when they chased Jake Levy to the showers in the fourth inning under a four-run, five-hit barrage eventually chalking up a 7 to 4 win. Reitz pitched effectively after relieving Levy.

Clyde Barfoot, crafty right-hander of the local club, scattered 13 Saint hits to hold the scoring down to a minimum.

Milner hit a home run for the Hawks in the third inning.

The win locks a St. Augustine-Gainesville tie for first place, giving the Hawks a one-up advantage with seven games left to play in the half.

The other league contest of the day, Palatka in Jacksonville, was called off on account of rain score by innings.

Finland Will Pay Its War Debt Installment

HELSINGFORS, Finland, June 12.—(AP)—Finland will pay her war debt installment due the United States June 15 in money as ready as marked in the National City Bank of New York.

Finland is the only one of the war debt nations which has paid the debt installments amounting to about one-quarter million dollars since the quarterly regularity.

Risto Rintala, governor of the Bank of Finland, responding to the semi-annual question as to whether Finland would pay the installment and why replied:

"Yes, because it is a contractual obligation because it is the part of our duty to pay because we will not be affected by the economic conditions of any country, and we will pay our debt as we have done in the past."

Sholtz Seeks Raising Of Embargo On Fruit

(AP)—A new proposal to lift against Florida's fruit which has been put through an all-party hearing process and will be taken up by the Senate today by Governor McCall.

The bill, which would lift the embargo on Florida fruit, was introduced in the Senate by Senator J. M. McCall today.

The bill would lift the embargo on Florida fruit, which has been in effect since 1933, and would allow Florida fruit to be sold in the United States.

The bill would also allow Florida fruit to be sold in the United States.

Beacham Deplores Sholtz Veto Of Act

TALLAHASSEE, June 12.—The question of constitutionality of the two-year public debt moratorium measure vetoed Sunday by Governor Sholtz should be for the Supreme Court to decide, Senator John K. Beacham, author of the bill, asserted yesterday.

Sholtz gave as one of his reasons for vetoing the bill his belief it was unconstitutional.

Beacham said that the constitutionality of the bill should be determined by the courts.

Short's Camp Is Being Remodeled

Remodeling and refurbishing of the Short's camp is well advanced at this time, it was announced today by the camp's management.

The camp, located near the city, is being prepared for the summer season.

The management expects the camp to be ready for the summer season.

Short's Camp Is Being Remodeled

Remodeling and refurbishing of the Short's camp is well advanced at this time, it was announced today by the camp's management.

The camp, located near the city, is being prepared for the summer season.

The management expects the camp to be ready for the summer season.

POLICE COURT

J. C. Faircloth, white, charged with driving a car while drunk, fined \$200.

M. K. Rutherford, white, fined \$5 for refusing to aid an officer.

Edhel Sleep, white, dismissed.

Anna Baxter, white, fined \$5 which was suspended, on charges of disorderly conduct.

George Tracy, white, charged with reckless driving and leaving the scene of an accident, fined \$10.

Q. Jordan, white, fined \$5 which was suspended on a charge of ordinance.

Joe Moss, white, and Goss Tippie and Sam Walters, fined \$1 each for violating a city sanitary ordinance.

David White and Richard Mathews, fined \$5 each for failing to report an accident.

Horace Jackson, charged with driving an auto while drunk, and with being drunk, to be tried next Monday.

Jessie Collins, fined \$5 for an assault.

Dewey Williams, fined \$1 for violating a traffic law.

Clarence Hood and Willie Collier, dismissed of charges of suspicion of larceny.

Winnit Henderson and Nun Henderson, fined \$5 each for disorderly conduct with the former's fine suspended.

Dade Grand Jury Looks Into Fraud

MIAMI, June 12.—(AP)—A grand jury began investigations yesterday into alleged possible shortages in the records of two county offices.

They were a \$15,641 discrepancy charged against George F. McCall, missing criminal court clerk, and an alleged \$119,000 deficit in the books of Robert L. Simpson, former county tax collector, removed from office.

At the same time, the commission announced it would appoint a county auditor to make regular checks of the fee offices and would request Governor Sholtz to send a state auditor here to go over the books of the commission itself.

RESULTS FROM WANT ADS

1—Announcements
HAVE YOUR WATCH repaired by one who really knows how. Briggs, Jeweler, Mag. Ave.

2—Lost and Found
LOST Packard hub cap between downtown and Rose Court. Reward if returned to Ruckey's Tire Shop.

LOST Female bird, big white with blue colored spots. Named "Kitty". W. F. Grooms, 306 E. 11th St.

3—Automobiles
1934 WILLYS Sedan, \$350, 1934 Buick Pickup, \$450. Keel & Sons, East Park Dealers.

6—Situation Wanted
COLORED GIRL wants job doing housework. Carrie Stevens, 711 1/2 Hickory Ave.

COLORED GIRL wants job doing housework. Charlotte Turner, 2 West 10th St.

COLORED GIRL wants any kind of job. Mrs. M. J. Johnson, 1117 W. 11th St. Phone 40-100.

14—Miscellaneous
MAYNARD CLIFFER, Gas Fitter, Installation systems, will accept 75¢ for any kind of gas work. For a free sample of Cliffer's Factor's prescription, call M. Reynolds' Drug Co.

15—Apartments For Rent
100-1000 APARTMENT with kitchen, bath, W. 1st St. Phone 40-100.

16—House To Rent
100-1000 APARTMENT with kitchen, bath, W. 1st St. Phone 40-100.

20—Farms For Sale
15 ACRE truck farm, 10 cleared, 4

Miscellaneous For Sale

FOR SALE: Plenty of second hand lumber at Duhart Lumber Yard, H. L. Duhart, Cypress and 9th, Phone 286-M.

SPECIAL for the next 10 days on No. 6 McCormick mowing machine, \$110. Implement Co.

MINERAL COLLOIDS, a colloidal phosphate with guaranteed 24 percent phosphoric acid, \$10.00 per ton delivered. Considerably cheaper in carload. W. H. Jones, 29 W. Central, Orlando, Fla.

FOR SALE: 1926 Chevrolet motor, radiator, and front end and rear axle. In good condition, \$10.00. Walter Trapp, 1 mile south of Gainsville, South Sanford Avenue.

FOR A JOB THAT WILL LAST

—Use Desler and Gay's Quality Paints. Stanley-Rogers Hardware Co.

NASH AND Dodge touring cars cheap. Call for brooding. F. E. Russell, Route 2, Box 215, Sanford, Fla.

28—Permanent Waving

ALL THIS week, \$3.50 permanents, 2 for \$5.00. Blue Bird.

29—For Rent or Sale

FOR RENT OR SALE—10 acre farm, tiled, complete with implements, at a very reasonable price. Apply American Fruit Growers.

LEGAL NOTICE

NOTICE OF MASTER'S SALE
NOTICE is hereby given that under and by virtue of a final decree dated June 10, A. D. 1935, rendered by the Honorable M. B. North, Chancellor, in that certain case pending in the Twenty Third Judicial Circuit, Seminole County, Florida, wherein EDWIN M. GIBSON, Plaintiff, versus EDWIN M. GIBSON, Defendant, and Lawrence C. Mayo, et al, six defendants, the undersigned as Special Master appointed and authorized under the terms of said decree to make sale of the real estate therein described, I will offer for sale and sell to the highest bidder for cash in the City of Sanford, Seminole County, Florida, the following described land in said State and County, to-wit:

Lot 213, 223, and 221, O. P. Swep's Land Co.'s Plat of Black Hammock, containing 20 acres more or less, and being made to satisfy said decree and costs. Purchaser to pay for Deed.

E. F. HOUSEHOLDER, Special Master.

Vegetable—Flower Seed—Pot Plants—Cut Flowers

Call And See Our Selection
Henry A. Russell Seed Co.
Corner 1st & Park Phone 413

NOTICE WILSON'S BARBER SHOP MOVED

To New Location
EDGEWOOD
Men Women Children HAIRCUTS 25c
Plenty Parking Space

ECZEMA Itching

For quick relief from the fiery torment and to control the incessant itching, use something Resinol. It helps nature heal sick, irritated skin. Get a jar today.

Resinol

The Morris Plan Company of Orlando has plenty of money to loan at reasonable rates on various plans for any worthy purpose.

Such loans run for one year and are repaid in easy weekly or monthly payments.

If you need money, consult our representative, Mr. Ira E. Southward, at 116 North Park Ave.

Tobacco Snuff

Tobacco Snuff with all the nicotinic in it. Don't buy snuff to stop smoking. Buy snuff to keep you from smoking. Up need beds to keep you out. Then you will have plenty of healthy plants. Buy snuff. \$2.00 per box. \$10.00 per case. Wholesale and Retail. Distributors: J. J. Cates Co., Inc. Sanford, Fla. Phone 402-J. Office: 116 N. Park Ave.

"BEFORE DINNER"

Drive Out To PERK'S PLACE
Orlando Highway

LET US HELP YOU GO STRAIGHT

It's almost criminal to wear out tires so quickly. "out of line" front ends. It's also subjecting you and others to dangerous driving. We align your car.

Seminole TIRE SHOP

Park and

Peter Pen

The LAND OF JUST SUPPOSIN MIGHT AS WELL SEE THE WHOLE COUNTRY SO LONG AS WE ARE UP.

THAT IS THE BAD LAND AND THERE IS THE CASTLE OF OLD KING SHARL. NOTHING GROWS IN THIS COUNTRY EXCEPT THE FOREST OF DESPAIR.

WHAT AN UGLY BARREN COUNTRY THAT IS OVER THERE?

I'LL SHOW THEM THEY CAN'T OUTWIT ME. I HAVE A TRICK UP MY SLEEVE THAT CAN'T FAIL.

THERE THEY ARE! PETER PEN, THE MORTAL, AND THE CAT. NOW FOR THE MASTER STROKE!

SAY! BUT THIS IS FUN! LOOK AT THE CAVES DOWN THERE!

YES, THOSE ARE THE MAGICAL CAVES. SOMEDAY WE WILL EXPLORE THEM.

LOOK UP NOT DOWN YOU ON THE MAGIC CAVES.

CHEST COLDS

Rub on Musterole. Used by millions for 25 years. NOT just a salve, but a counter-irritant. All druggists. Three strengths.

MUSTEROLE

Bauman Operating Pinehurst Grocery

Low Bauman, well known local business man, specializes in complete line of staple and fancy groceries, fresh meats and vegetables at Cor. French and 20th St. Phone 316-W. Your patronage solicited. —Adv.

The Sanford Herald

Published every afternoon except Sundays, 211 Magnolia Avenue.

Subscription Rates: In Advance, 10 Cents Per Copy; In Advance, 10 Cents Per Copy.

Advertising Rates: 10 Cents Per Line Per Day; 10 Cents Per Line Per Day.

Copyright 1935 by The Sanford Herald, Inc.

Printed at the Sanford Herald Press, Sanford, Florida.

Telephone 1111

Sanford, Florida, June 13, 1935

A Sad Affair

Don't take up your children's quarrels with other people's children.

We have heard this advice given a good many times, and almost always from the standpoint of training the child. Certainly, if every time little Johnny gets into a row with little Billy, he can get his parents to settle his difficulties for him, he will never develop any sense of independence, nor learn how to take care of himself when he suddenly finds himself out in the world on his own away from parental supervision.

But the other day a more practical demonstration was given of the importance of leaving it to the children to settle their difficulties. The other day, in New York City Tony Fontana, age nine, scooped up a handful of mud and threw it at Josie Costantino. It was a brand new dress and fresh and clean. The mud landed right in the middle of it and the dress was ruined.

Crying as if her heart would break little Josie ran to her mother and told the whole story. Her mother was incensed and rubbed out to settle with Tony. But Tony, meanwhile, had retreated to the safer confines of his own home where he was surrounded by his mother, Anna, his father, Giuseppe, his sister Johanna, and another sister. Come, all of whom promptly rallied to little Tony's support.

Mrs. Costantino, hopefully outnumbered, soon returned to her own home to bring up the reserves. Her husband, Dominick, followed by the disconsolate Josephine, and sister, Gloria, ran out to join in the fray. He arrived just in time to find Tony's father biting Josephine's mother on one arm while she flayed him furiously with the other. Mr. Costantino, a small man, rushed back into his house and secured a pistol, an old automatic, left over from army days.

Himself, by rage, he cut loose, and by the time his hip was empty both Mr. and Mrs. Fontana lay dead. He had struck in the heart with two bullets, she in the leg and the heart. Dominick Costantino ran away from the scene of screaming women and crying children, but before he could get a motor car to take him to the hospital he had already killed a man and his wife.

When the police arrived, the children, Tony and Josephine, who had been the cause of all the trouble, were just playing happily in the street. They had just brought an irreparable tragedy into their lives.

A Plan For World Recovery

An early return to the international gold standard by the principal nations of the world is urged in a report of the League of Nations Commission on the Economic Situation of the World.

The report, which is the result of a study of the economic situation of the world since the outbreak of the war, is the first of a series of reports which will be published by the League of Nations.

The report states that the world economy is in a state of depression and that the only way to bring about a recovery is by a return to the gold standard.

The report also states that the world economy is in a state of depression and that the only way to bring about a recovery is by a return to the gold standard.

The report also states that the world economy is in a state of depression and that the only way to bring about a recovery is by a return to the gold standard.

The report also states that the world economy is in a state of depression and that the only way to bring about a recovery is by a return to the gold standard.

The report also states that the world economy is in a state of depression and that the only way to bring about a recovery is by a return to the gold standard.

The report also states that the world economy is in a state of depression and that the only way to bring about a recovery is by a return to the gold standard.

The report also states that the world economy is in a state of depression and that the only way to bring about a recovery is by a return to the gold standard.

The report also states that the world economy is in a state of depression and that the only way to bring about a recovery is by a return to the gold standard.

The report also states that the world economy is in a state of depression and that the only way to bring about a recovery is by a return to the gold standard.

The report also states that the world economy is in a state of depression and that the only way to bring about a recovery is by a return to the gold standard.

The report also states that the world economy is in a state of depression and that the only way to bring about a recovery is by a return to the gold standard.

JUST BETWEEN FRIENDS

BY GEORGE GARNER

Will any Florida Floridian seriously consider the institution as an individual congressional district. The long term "forgetter" is, simply, a candidate in a primary with some other section. Conversely, the Florida of Central Florida is a very modern in the nation.

Central Florida is to have a representative in the Congress. But Central Florida right now has no representative. It is to be, in the words of the Florida of Central Florida, a "representative" in the Congress.

The Florida of Central Florida is to have a representative in the Congress. But Central Florida right now has no representative. It is to be, in the words of the Florida of Central Florida, a "representative" in the Congress.

The Florida of Central Florida is to have a representative in the Congress. But Central Florida right now has no representative. It is to be, in the words of the Florida of Central Florida, a "representative" in the Congress.

The Florida of Central Florida is to have a representative in the Congress. But Central Florida right now has no representative. It is to be, in the words of the Florida of Central Florida, a "representative" in the Congress.

The Florida of Central Florida is to have a representative in the Congress. But Central Florida right now has no representative. It is to be, in the words of the Florida of Central Florida, a "representative" in the Congress.

The Florida of Central Florida is to have a representative in the Congress. But Central Florida right now has no representative. It is to be, in the words of the Florida of Central Florida, a "representative" in the Congress.

The Florida of Central Florida is to have a representative in the Congress. But Central Florida right now has no representative. It is to be, in the words of the Florida of Central Florida, a "representative" in the Congress.

The Florida of Central Florida is to have a representative in the Congress. But Central Florida right now has no representative. It is to be, in the words of the Florida of Central Florida, a "representative" in the Congress.

The Florida of Central Florida is to have a representative in the Congress. But Central Florida right now has no representative. It is to be, in the words of the Florida of Central Florida, a "representative" in the Congress.

The Florida of Central Florida is to have a representative in the Congress. But Central Florida right now has no representative. It is to be, in the words of the Florida of Central Florida, a "representative" in the Congress.

The Florida of Central Florida is to have a representative in the Congress. But Central Florida right now has no representative. It is to be, in the words of the Florida of Central Florida, a "representative" in the Congress.

The Florida of Central Florida is to have a representative in the Congress. But Central Florida right now has no representative. It is to be, in the words of the Florida of Central Florida, a "representative" in the Congress.

The Florida of Central Florida is to have a representative in the Congress. But Central Florida right now has no representative. It is to be, in the words of the Florida of Central Florida, a "representative" in the Congress.

The Florida of Central Florida is to have a representative in the Congress. But Central Florida right now has no representative. It is to be, in the words of the Florida of Central Florida, a "representative" in the Congress.

The Florida of Central Florida is to have a representative in the Congress. But Central Florida right now has no representative. It is to be, in the words of the Florida of Central Florida, a "representative" in the Congress.

The Florida of Central Florida is to have a representative in the Congress. But Central Florida right now has no representative. It is to be, in the words of the Florida of Central Florida, a "representative" in the Congress.

The Florida of Central Florida is to have a representative in the Congress. But Central Florida right now has no representative. It is to be, in the words of the Florida of Central Florida, a "representative" in the Congress.

The Florida of Central Florida is to have a representative in the Congress. But Central Florida right now has no representative. It is to be, in the words of the Florida of Central Florida, a "representative" in the Congress.

The Florida of Central Florida is to have a representative in the Congress. But Central Florida right now has no representative. It is to be, in the words of the Florida of Central Florida, a "representative" in the Congress.

Over 3000 Carloads Green Beans Mowed Out Of Pahoek

PAHOEK, June 13. — Green beans, including lima, totaling 3,001 carloads and making more than half the total of 5,830 cars, of winter vegetables shipped from the Everglades area, were mowed over the line of the Florida East Coast railway during the farming season just closed.

The last carload shipment mowed by the railway was a single car of eggplant rolled from Belle Glade last Saturday, bringing to an end shipments which during the peak of the season, went as high as 500 cars in a 7-day period. Figures on shipments up through May 31, obtained from C. H. Phillips of the Florida East Coast, showed a total of 5,830 and with the car June 1 brought the total to 5,931, divided as follows: Beans 3,091, tomatoes 349, potatoes 72, other vegetables 2,048.

The shipping season ended last Saturday, saw approximately 100 less cars rolled to northern markets this year than last, but returned considerably more money to growers in the area. Average prices were higher than last year except on the late crop of tomatoes and many extra thousands of dollars came to the region through sales of cabbage.

In the winter season of the day, one wonder is why the mowing of the Florida East Coast railway was not done earlier. The mowing of the Florida East Coast railway was not done earlier.

In the winter season of the day, one wonder is why the mowing of the Florida East Coast railway was not done earlier. The mowing of the Florida East Coast railway was not done earlier.

In the winter season of the day, one wonder is why the mowing of the Florida East Coast railway was not done earlier. The mowing of the Florida East Coast railway was not done earlier.

In the winter season of the day, one wonder is why the mowing of the Florida East Coast railway was not done earlier. The mowing of the Florida East Coast railway was not done earlier.

In the winter season of the day, one wonder is why the mowing of the Florida East Coast railway was not done earlier. The mowing of the Florida East Coast railway was not done earlier.

In the winter season of the day, one wonder is why the mowing of the Florida East Coast railway was not done earlier. The mowing of the Florida East Coast railway was not done earlier.

In the winter season of the day, one wonder is why the mowing of the Florida East Coast railway was not done earlier. The mowing of the Florida East Coast railway was not done earlier.

In the winter season of the day, one wonder is why the mowing of the Florida East Coast railway was not done earlier. The mowing of the Florida East Coast railway was not done earlier.

In the winter season of the day, one wonder is why the mowing of the Florida East Coast railway was not done earlier. The mowing of the Florida East Coast railway was not done earlier.

In the winter season of the day, one wonder is why the mowing of the Florida East Coast railway was not done earlier. The mowing of the Florida East Coast railway was not done earlier.

In the winter season of the day, one wonder is why the mowing of the Florida East Coast railway was not done earlier. The mowing of the Florida East Coast railway was not done earlier.

In the winter season of the day, one wonder is why the mowing of the Florida East Coast railway was not done earlier. The mowing of the Florida East Coast railway was not done earlier.

In the winter season of the day, one wonder is why the mowing of the Florida East Coast railway was not done earlier. The mowing of the Florida East Coast railway was not done earlier.

In the winter season of the day, one wonder is why the mowing of the Florida East Coast railway was not done earlier. The mowing of the Florida East Coast railway was not done earlier.

In the winter season of the day, one wonder is why the mowing of the Florida East Coast railway was not done earlier. The mowing of the Florida East Coast railway was not done earlier.

In the winter season of the day, one wonder is why the mowing of the Florida East Coast railway was not done earlier. The mowing of the Florida East Coast railway was not done earlier.

In the winter season of the day, one wonder is why the mowing of the Florida East Coast railway was not done earlier. The mowing of the Florida East Coast railway was not done earlier.

In the winter season of the day, one wonder is why the mowing of the Florida East Coast railway was not done earlier. The mowing of the Florida East Coast railway was not done earlier.

MIMEOGRAPHING

Forms, Letters, Circulars, Mailing Lists

SEMINOLE COUNTY CREDIT ASSOCIATION

108 1/2 Park

Dozier & Gay's Quality Paints

"Best For The South"

If you have not been visited in several months...

STANLEY-ROGERS HARDWARE CO.

204 Sanford Avenue

Phone 145

Never... Just... One... things...

SEMINOLE COUNTY LAUNDRY

"Hand Box Dry Cleaning"

Phone 475

MAN-HUNTER TRAILS

ALL-WEATHER

SEE EVIDENCE HERE!

Over and over Fawcett's PROVED "G-3" All-Weather delivers more than 43% longer non-skid tread.

because of the block contact of a flat All-Weather tread.

because of the block contact of a flat All-Weather tread.

because of the block contact of a flat All-Weather tread.

because of the block contact of a flat All-Weather tread.

because of the block contact of a flat All-Weather tread.

because of the block contact of a flat All-Weather tread.

because of the block contact of a flat All-Weather tread.

because of the block contact of a flat All-Weather tread.

because of the block contact of a flat All-Weather tread.

because of the block contact of a flat All-Weather tread.

because of the block contact of a flat All-Weather tread.

because of the block contact of a flat All-Weather tread.

because of the block contact of a flat All-Weather tread.

because of the block contact of a flat All-Weather tread.

because of the block contact of a flat All-Weather tread.

because of the block contact of a flat All-Weather tread.

because of the block contact of a flat All-Weather tread.

because of the block contact of a flat All-Weather tread.

because of the block contact of a flat All-Weather tread.

because of the block contact of a flat All-Weather tread.

because of the block contact of a flat All-Weather tread.

because of the block contact of a flat All-Weather tread.

because of the block contact of a flat All-Weather tread.

because of the block contact of a flat All-Weather tread.

because of the block contact of a flat All-Weather tread.

because of the block contact of a flat All-Weather tread.

because of the block contact of a flat All-Weather tread.

because of the block contact of a flat All-Weather tread.

because of the block contact of a flat All-Weather tread.

because of the block contact of a flat All-Weather tread.

because of the block contact of a flat All-Weather tread.

because of the block contact of a flat All-Weather tread.

because of the block contact of a flat All-Weather tread.

because of the block contact of a flat All-Weather tread.

because of the block contact of a flat All-Weather tread.

because of the block contact of a flat All-Weather tread.

because of the block contact of a flat All-Weather tread.

because of the block contact of a flat All-Weather tread.

because of the block contact of a flat All-Weather tread.

because of the block contact of a flat All-Weather tread.

because of the block contact of a flat All-Weather tread.

because of the block contact of a flat All-Weather tread.

because of the block contact of a flat All-Weather tread.

because of the block contact of a flat All-Weather tread.

because of the block contact of a flat All-Weather tread.

because of the block contact of a flat All-Weather tread.

because of the block contact of a flat All-Weather tread.

because of the block contact of a flat All-Weather tread.

because of the block contact of a flat All-Weather tread.

because of the block contact of a flat All-Weather tread.

because of the block contact of a flat All-Weather tread.

because of the block contact of a flat All-Weather tread.

because of the block contact of a flat All-Weather tread.

because of the block contact of a flat All-Weather tread.

because of the block contact of a flat All-Weather tread.

because of the block contact of a flat All-Weather tread.

because of the block contact of a flat All-Weather tread.

because of the block contact of a flat All-Weather tread.

because of the block contact of a flat All-Weather tread.

because of the block contact of a flat All-Weather tread.

because of the block contact of a flat All-Weather tread.

because of the block contact of a flat All-Weather tread.

because of the block contact of a flat All-Weather tread.

because of the block contact of a flat All-Weather tread.

Social and Personal Activities

MARGARET PETERS, Society Editor

PHONE 145

Miss Kathleen Long Weds Ben Cogburn

Coming as a surprise to a host of friends, both here and in other parts of the state, is the announcement of the wedding last night of Miss Kathleen Louise Long, daughter of Mr. and Mrs. H. L. Long, of this city, to Ben Cogburn, son of Mr. and Mrs. Charles Henry Cogburn, also of this city.

The ceremony was performed last night at 7:30 o'clock by Dr. E. B. Brown, pastor of the First Presbyterian Church, at his residence on Palmview Avenue. Only members of the immediate families of the couple were in attendance.

The bride was a dark blue tulle gown with very blue accessories. The train of the ensemble was finger tip length and had a long, flowing veil. Her shoulder coverage was of tulle and lace. Her hair was styled in a simple, elegant manner. She wore a simple, elegant necklace. Her shoes were simple, elegant pumps. Her gloves were simple, elegant. Her jewelry was simple, elegant. Her hair was styled in a simple, elegant manner. She wore a simple, elegant necklace. Her shoes were simple, elegant pumps. Her gloves were simple, elegant. Her jewelry was simple, elegant.

The groom was a dark blue tulle gown with very blue accessories. The train of the ensemble was finger tip length and had a long, flowing veil. Her shoulder coverage was of tulle and lace. Her hair was styled in a simple, elegant manner. She wore a simple, elegant necklace. Her shoes were simple, elegant pumps. Her gloves were simple, elegant. Her jewelry was simple, elegant.

The bride was a dark blue tulle gown with very blue accessories. The train of the ensemble was finger tip length and had a long, flowing veil. Her shoulder coverage was of tulle and lace. Her hair was styled in a simple, elegant manner. She wore a simple, elegant necklace. Her shoes were simple, elegant pumps. Her gloves were simple, elegant. Her jewelry was simple, elegant.

The groom was a dark blue tulle gown with very blue accessories. The train of the ensemble was finger tip length and had a long, flowing veil. Her shoulder coverage was of tulle and lace. Her hair was styled in a simple, elegant manner. She wore a simple, elegant necklace. Her shoes were simple, elegant pumps. Her gloves were simple, elegant. Her jewelry was simple, elegant.

The bride was a dark blue tulle gown with very blue accessories. The train of the ensemble was finger tip length and had a long, flowing veil. Her shoulder coverage was of tulle and lace. Her hair was styled in a simple, elegant manner. She wore a simple, elegant necklace. Her shoes were simple, elegant pumps. Her gloves were simple, elegant. Her jewelry was simple, elegant.

The groom was a dark blue tulle gown with very blue accessories. The train of the ensemble was finger tip length and had a long, flowing veil. Her shoulder coverage was of tulle and lace. Her hair was styled in a simple, elegant manner. She wore a simple, elegant necklace. Her shoes were simple, elegant pumps. Her gloves were simple, elegant. Her jewelry was simple, elegant.

The bride was a dark blue tulle gown with very blue accessories. The train of the ensemble was finger tip length and had a long, flowing veil. Her shoulder coverage was of tulle and lace. Her hair was styled in a simple, elegant manner. She wore a simple, elegant necklace. Her shoes were simple, elegant pumps. Her gloves were simple, elegant. Her jewelry was simple, elegant.

The groom was a dark blue tulle gown with very blue accessories. The train of the ensemble was finger tip length and had a long, flowing veil. Her shoulder coverage was of tulle and lace. Her hair was styled in a simple, elegant manner. She wore a simple, elegant necklace. Her shoes were simple, elegant pumps. Her gloves were simple, elegant. Her jewelry was simple, elegant.

The bride was a dark blue tulle gown with very blue accessories. The train of the ensemble was finger tip length and had a long, flowing veil. Her shoulder coverage was of tulle and lace. Her hair was styled in a simple, elegant manner. She wore a simple, elegant necklace. Her shoes were simple, elegant pumps. Her gloves were simple, elegant. Her jewelry was simple, elegant.

The groom was a dark blue tulle gown with very blue accessories. The train of the ensemble was finger tip length and had a long, flowing veil. Her shoulder coverage was of tulle and lace. Her hair was styled in a simple, elegant manner. She wore a simple, elegant necklace. Her shoes were simple, elegant pumps. Her gloves were simple, elegant. Her jewelry was simple, elegant.

The bride was a dark blue tulle gown with very blue accessories. The train of the ensemble was finger tip length and had a long, flowing veil. Her shoulder coverage was of tulle and lace. Her hair was styled in a simple, elegant manner. She wore a simple, elegant necklace. Her shoes were simple, elegant pumps. Her gloves were simple, elegant. Her jewelry was simple, elegant.

The groom was a dark blue tulle gown with very blue accessories. The train of the ensemble was finger tip length and had a long, flowing veil. Her shoulder coverage was of tulle and lace. Her hair was styled in a simple, elegant manner. She wore a simple, elegant necklace. Her shoes were simple, elegant pumps. Her gloves were simple, elegant. Her jewelry was simple, elegant.

The bride was a dark blue tulle gown with very blue accessories. The train of the ensemble was finger tip length and had a long, flowing veil. Her shoulder coverage was of tulle and lace. Her hair was styled in a simple, elegant manner. She wore a simple, elegant necklace. Her shoes were simple, elegant pumps. Her gloves were simple, elegant. Her jewelry was simple, elegant.

The groom was a dark blue tulle gown with very blue accessories. The train of the ensemble was finger tip length and had a long, flowing veil. Her shoulder coverage was of tulle and lace. Her hair was styled in a simple, elegant manner. She wore a simple, elegant necklace. Her shoes were simple, elegant pumps. Her gloves were simple, elegant. Her jewelry was simple, elegant.

The bride was a dark blue tulle gown with very blue accessories. The train of the ensemble was finger tip length and had a long, flowing veil. Her shoulder coverage was of tulle and lace. Her hair was styled in a simple, elegant manner. She wore a simple, elegant necklace. Her shoes were simple, elegant pumps. Her gloves were simple, elegant. Her jewelry was simple, elegant.

The groom was a dark blue tulle gown with very blue accessories. The train of the ensemble was finger tip length and had a long, flowing veil. Her shoulder coverage was of tulle and lace. Her hair was styled in a simple, elegant manner. She wore a simple, elegant necklace. Her shoes were simple, elegant pumps. Her gloves were simple, elegant. Her jewelry was simple, elegant.

The bride was a dark blue tulle gown with very blue accessories. The train of the ensemble was finger tip length and had a long, flowing veil. Her shoulder coverage was of tulle and lace. Her hair was styled in a simple, elegant manner. She wore a simple, elegant necklace. Her shoes were simple, elegant pumps. Her gloves were simple, elegant. Her jewelry was simple, elegant.

The groom was a dark blue tulle gown with very blue accessories. The train of the ensemble was finger tip length and had a long, flowing veil. Her shoulder coverage was of tulle and lace. Her hair was styled in a simple, elegant manner. She wore a simple, elegant necklace. Her shoes were simple, elegant pumps. Her gloves were simple, elegant. Her jewelry was simple, elegant.

The bride was a dark blue tulle gown with very blue accessories. The train of the ensemble was finger tip length and had a long, flowing veil. Her shoulder coverage was of tulle and lace. Her hair was styled in a simple, elegant manner. She wore a simple, elegant necklace. Her shoes were simple, elegant pumps. Her gloves were simple, elegant. Her jewelry was simple, elegant.

The groom was a dark blue tulle gown with very blue accessories. The train of the ensemble was finger tip length and had a long, flowing veil. Her shoulder coverage was of tulle and lace. Her hair was styled in a simple, elegant manner. She wore a simple, elegant necklace. Her shoes were simple, elegant pumps. Her gloves were simple, elegant. Her jewelry was simple, elegant.

The bride was a dark blue tulle gown with very blue accessories. The train of the ensemble was finger tip length and had a long, flowing veil. Her shoulder coverage was of tulle and lace. Her hair was styled in a simple, elegant manner. She wore a simple, elegant necklace. Her shoes were simple, elegant pumps. Her gloves were simple, elegant. Her jewelry was simple, elegant.

The groom was a dark blue tulle gown with very blue accessories. The train of the ensemble was finger tip length and had a long, flowing veil. Her shoulder coverage was of tulle and lace. Her hair was styled in a simple, elegant manner. She wore a simple, elegant necklace. Her shoes were simple, elegant pumps. Her gloves were simple, elegant. Her jewelry was simple, elegant.

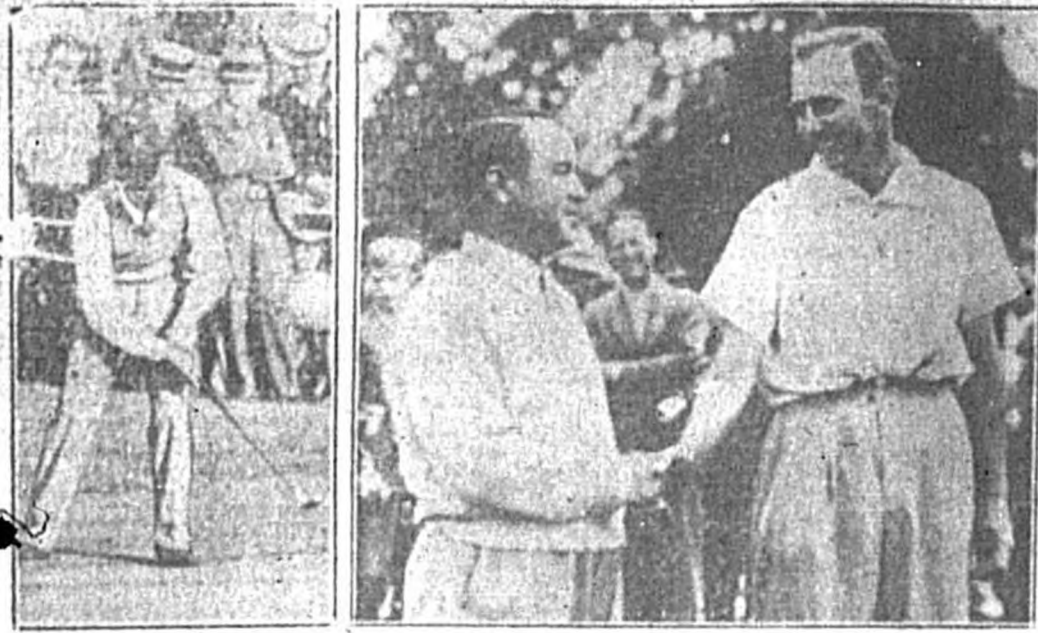
The bride was a dark blue tulle gown with very blue accessories. The train of the ensemble was finger tip length and had a long, flowing veil. Her shoulder coverage was of tulle and lace. Her hair was styled in a simple, elegant manner. She wore a simple, elegant necklace. Her shoes were simple, elegant pumps. Her gloves were simple, elegant. Her jewelry was simple, elegant.

The groom was a dark blue tulle gown with very blue accessories. The train of the ensemble was finger tip length and had a long, flowing veil. Her shoulder coverage was of tulle and lace. Her hair was styled in a simple, elegant manner. She wore a simple, elegant necklace. Her shoes were simple, elegant pumps. Her gloves were simple, elegant. Her jewelry was simple, elegant.

The bride was a dark blue tulle gown with very blue accessories. The train of the

VISUAL NEWS of the WORLD in PICTURE

STARS FIND GOING ROUGH IN U. S. OPEN



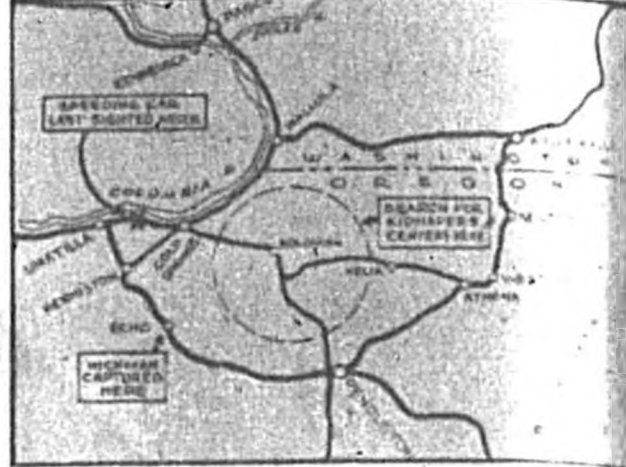
The "Hades of nature," as the course is called, although proved too tough for the majority of the stars, who were sky high in the opening round. ... (Associated Press Photos)

BABE PARTS COMPANY WITH BRAVES



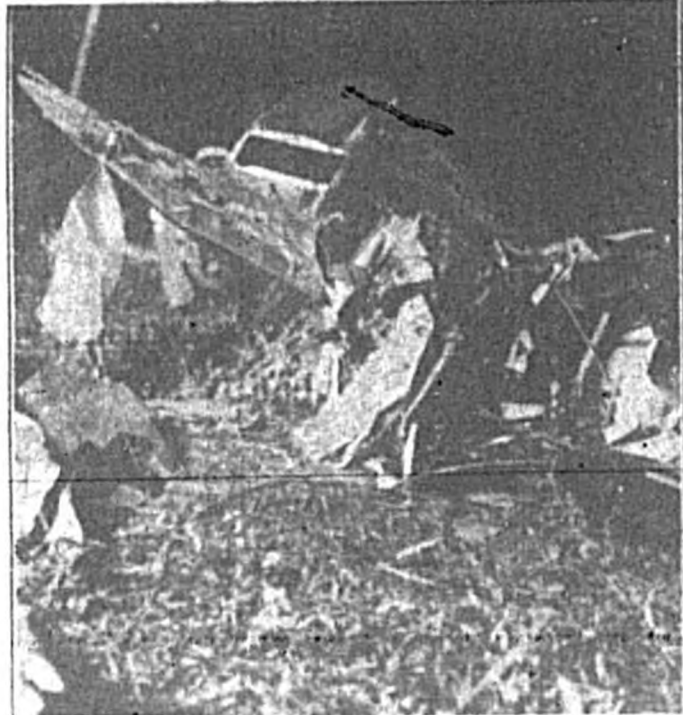
Declaring he couldn't "go along" with Judge Emil Fuchs, Babe Ruth, the ex-homerun king, quit the Boston Braves and was given his unconditional release by Fuchs, president of the club. ... (Associated Press Photos)

Where Hunt For Tacoma Kidnapers Centers



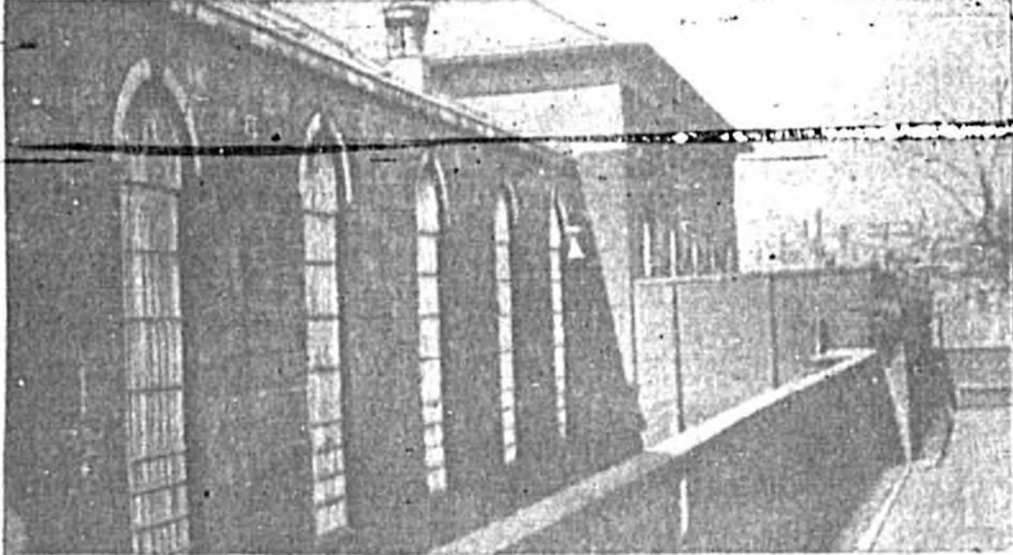
This map shows where an army of man-hunters is concentrating its search for George Weyerhaeuser of Tacoma, Wash., whose wealthy parents ransomed him for a million dollars. ... (Associated Press Photos)

MOTHER AND TWO SONS DIE IN PLANE CRASH



Mrs. A. A. Lowman and her two sons, John and William, lost their lives in the crash of their plane near Monticello, Fla. The three were flying from Miami to ... (Associated Press Photos)

Millens And Faber Face Death Penalty



Only a few steps separate the defendants from the electric chair. They are held in the Massachusetts state prison at Boston, awaiting execution for killing a ... (Associated Press Photos)

A FAVORITE IN ENGLISH DERBY



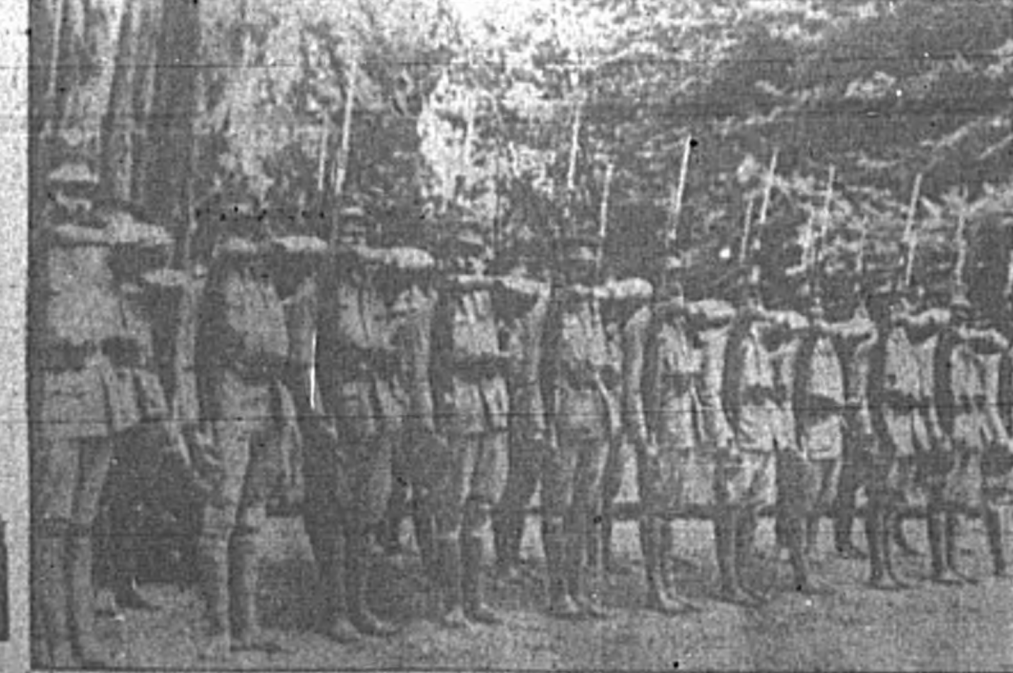
The English favorite in the English Derby at Epsom Downs June 11, Mrs. Aga Khan, is shown taking a bit of exercise before the race. ... (Associated Press Photos)

READY FOR STRATOSPHERE FLIGHT



With all preliminaries complete, the army and the National Geographic Society, joint sponsors, await favorable weather to send their 2,700,000 cubic foot balloon, the biggest ever constructed, on a scientific flight into the stratosphere from a sheltered valley near Rapid City, S. D. ... (Associated Press Photos)

Ethiopians and Italians Clash On Border



Dispatches report another clash between Ethiopian and Italian troops on the Somali border in which both sides lost a number in dead and wounded. ... (Associated Press Photos)

TWO KILLED, FIVE HURT IN HOTEL FIRE



Two men lost their lives, five persons were injured, and a score of guests fled their rooms as fire swept through the 40-year-old Florence hotel at Birmingham, Ala. ... (Associated Press Photos)

Rayburn Bill Passage Has Street Worried

NEW YORK, June 11.—Wall Street Tuesday looked apprehensively upon the passage of the Wheeler-Rayburn utility bill by the Senate.

Utility experts predicted that if the bill becomes law, as they now expect, the first burden will fall upon investors in the securities holding companies. ...

British Newspapers Barred From Italy

ROME, June 11.—The government Tuesday banned four British daily newspapers from circulation in Italy because of their recent criticism and comment on the Italian-Abyssinian dispute in East Africa.

The papers are the London Daily Herald, Manchester Guardian, Sunday Express and London Evening Standard.

Kirby

Repoussé

Q.W. Lawton

ORLANDO, FLORIDA

