

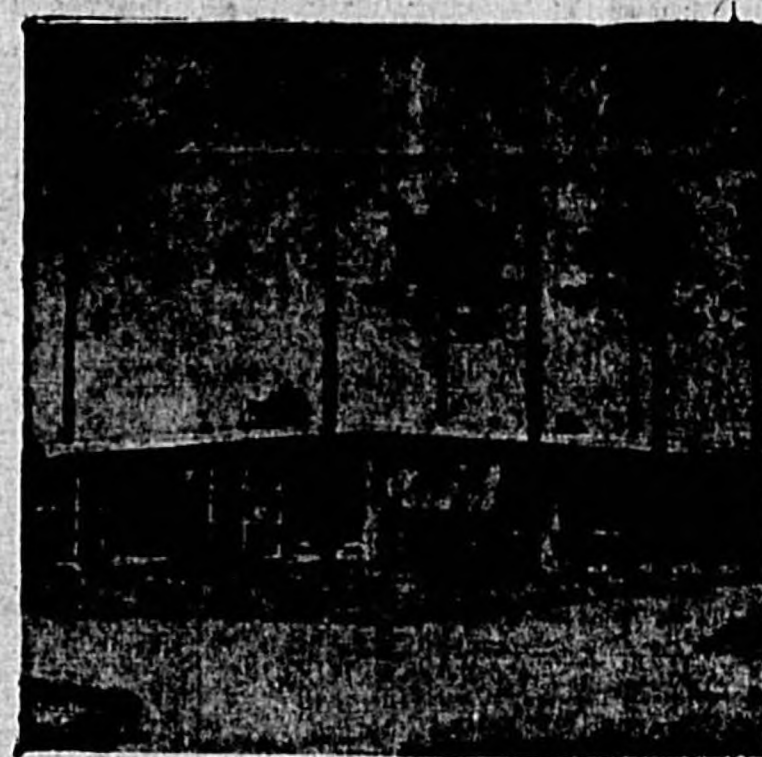
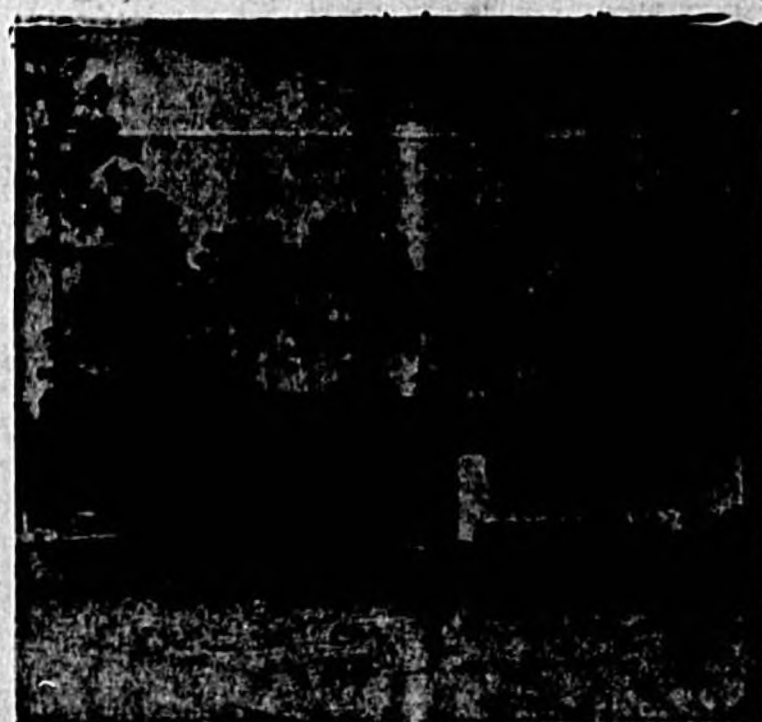
WOW!



FOLLOW THE CROWD TO SOUTH PINECREST!

We Started Construction In South Pinecrest On Sept. 15th, 1955,
Since That Date We Have Built And Sold 59 Homes.

We Now Have Under Construction 27 More, All Of Which
Will Be Completed By Feb. 15th.



● Shown Here Are A Few Of The Many Styled Homes We Have To Offer You In South Pinecrest.

WE THINK SOUTH PINECREST IS SOMETHING TO BE PROUD OF

Located: South of Beautiful Pinecrest
Elementary School. City Sewer,
Paved Streets, Large Fully Landscaped Lots.

We Are Building 125 Modern
Designed Three Bedroom
Homes Priced From
\$11,200. to \$14,750

● 27 More Under Construction
● 59 Homes Sold

You Can Purchase Our
\$11,200 Home....

IF YOU ARE A VETERAN,

\$625. Down Payment
\$66. Per Month

SERVICE PERSONNEL F.H.A.

\$1550. Down Payment
\$88. Per Month

F.H.A.

\$1000 Down Payment
\$68. Per Month

Act Now And You Can Choose Your Paint
Colors Inside And Out. Also Bath Tile And
Brick Trim On Any House Not Completed.

Drive By Today And Our
Sales Representative Will
Give You Full Information.

Odham & Judor, Inc.

BRALEY ODHAM, President

4
More Shopping Days
Until Christmas

The Sanford Herald

VOLUME XLVI ESTABLISHED 1908 SANFORD, FLORIDA TUESDAY, DECEMBER 20, 1933 Associated Press Licensed Wire No. 343

Weather
Sunny and cool this morning with high of 45 to 72. Fair tonight and Wednesday. Low tonight 45 to 52.

Recreational Area Gets Another Boost

County Approves Proposal Kridler Reports On Developments

The Goldsboro Recreation Area, adjacent to the Goldsboro Elementary School, received another boost this morning as the Board of Seminole County Commissioners approved a \$1,500 commitment for the forthcoming budget to support the maintenance of the project.

City Commissioner John Kridler appeared before the Board of Seminole County Commissioners today to report on the developments of the project up to the present time.

"The way I see it, gentlemen," Kridler said, "is that we must provide a swimming pool for the project immediately.

"The most important part of the program has become the swimming pool," Kridler said as he explained that the greater portion of the property is located in the county with the proposed pool estimated to cost in the neighborhood of \$50,000.

"We intend to look at other pools that have already been built," he said, "and we hope that Seminole will go along with us in the neighborhood of \$1,500 a year.

"It is hoped that the pool will be constructed and be ready for use by the beginning of the coming summer," Kridler reported and he added, "we believe it will take the cooperation of the City, County, and School Board to complete it."

County Commissioner Fred Dyon, a member of the City-county committee said "We absolutely need the pool and we all know that we can't go any further than the \$1500 already in the budget for this year. I would certainly like to see something worked out—'It is a most wise idea."

Commissioner Otis Fouracre agreed that "It is a good idea."

The Board of County Commissioners unanimously approved the \$1500 commitment for the forthcoming budget to take care of the maintenance of the project.

Work on the project is expected to get underway, according to City Commissioners Kridler and County Commissioner Dyon, on Jan. 1.

Rotarians Awed By Future Outlook As Told By Touhy

Rotarians meeting yesterday noon at the Yacht Club in their final gathering of the year 1933, were actually held spell-bound by the "crystal gazing" talk of George Touhy, vice-president of the First Federal Savings and Loan Association of this city. Having his talk on the addresses of four nationally known men at a recent convention of Savings and Loan Executives at Miami Beach, Touhy mentioned, among other items, the following predictions made by Len Cherne, Executive Director, Research Institute of America; Dr. Arthur Upgren, Dean Amos Tuck School of Business of Dartmouth College; John Mee, Management Consultant of Indiana and Perry Prentice, Editor of House and Home Magazine.

"The work week of the future will be reduced from 40 hours to 36 and ultimately to 32 hours per week. This means a three day weekend until such time as holidays, regardless of when they fall, will all come on Mondays, giving us a four day holiday period. Spending will increase from the present 20 billion dollar industry to 75 billion, annually.

Touhy stated that the economist forecast travel in the next few years would permit weekends in Europe, South America and other foreign countries. They predict that a person could leave London and arrive in New York at exactly the same time he left London. Four Horsemen would be eliminated—there would be no more starvation, most diseases reduced, unemployment would be nil and war no longer dreaded. Our population will increase to 165 million in 1950; to 175 million in 1960 and to 185 million in 1970. Births would total two and a half million a year. The world population would increase 70,000 per day.

The figures on housing amazed his hearers. In 1933 there were 30,000 homes erected. In 1935 the figure was 1,300,000 and Prentice stated there would be 3,000,000 built in 1950. We must build 1,200,000 a year to meet family formation and obsolescence. Family income will show the following trends: 1945 - \$4,000, 1950 - \$5,000, 1955 - \$5,500, 1960 - \$6,100, 1965 - \$6,700 and in 1970, the production was that the average family income would be \$7,200.

The predictions for Florida are - population up 10 per cent since 1930, is now four million, a figure recently forecast for 1960 and is increasing at a rate of 3,400 a week; a figure of 20.3 per cent as against the national average of 14.9 per cent. Florida housing is up 20 per cent as against 11 per cent nationally; income in the state for period of 1940-1955 is up 44 per cent against 24 per cent nationally. As for Sanford, the speaker issued a challenge to his hearers to keep pace with the growth of the state by taking concerted action in projects that will benefit the entire community. He spoke of the Chamber of Commerce of which he is the president and of the Retail Merchants Association which has developed into a prominent community asset. His talk showed much time in preparation and was very well received by the club members.

Prior to the Touhy talk, Clarence L. Redding reported on the status of the TV fund for the Methodist Children's Home at Enterprise. The offer of William E. (Bill) Kader, local jeweler to make up any deficit and guarantee the delivery of the TV set to the Home, was greeted with hearty applause.

William (Bill) Bush president, Christmas songs were led by Charlie Morrison with Harry Kudell as accompanist. The Rev. Lucian Scott offered the invocation and introduced the visitors. There will be no meetings on Dec. 26 and Jan. 2, it was announced.



A SANFORD NATIONAL GUARDSMAN is shown relaying information as Joe Baker, shown on the right, directs parking of automobiles and the directing of galleries. (Staff Photo)

Sen. George Smathers Ends Fall Speaking Tour Around Florida

U.S. Senator George Smathers, winding up an extensive fall speaking tour about the state, says that Florida's people are more alert than ever to the issues confronting the nation and the world.

Smathers, who has covered tens of thousands of miles since Sept. 1, and reached most of the 67 counties, declared today he was "deeply impressed by a continuing and intensified public grasp of the great issues of the day."

After making some 250 speeches and television appearances, Smathers is preparing to return to Washington after Christmas for the opening of Congress Jan. 3 and for committee hearings on the problems of small business.

Smathers, chairman of the Small Business subcommittee on military procurement, will preside at the hearings, to be held Jan. 9 and 10.

Summing up some impressions of public opinion in Florida at the close of his tour, Smathers made these points:

1. National Defense—"There appears to be a virtually complete acceptance in Florida of the concept that nothing should stand in the way of a military program maintaining superiority over the communist nations."
2. Confidence in The Economy—"Optimism for the continued prosperity of the nation, and of Florida particularly, is manifest at every hand."
3. Road Program—"Public opinion accepts the necessity for a federal highway program providing interstates traffic arteries that will keep pace with needs."
4. Small Business—"Substantial concern is felt in Florida for the small businessman in these times of snow-balling consolidation and merger. The people are looking for some sort of remedial legislation."
5. Tax Cut—"Opinion backs an income tax reduction, but not at the expense of national defense and a balanced budget."
6. Political Trends—"The Democrats stand in a good position to regain Florida and the nation in the presidential election next year."

Smathers said he was "truly gratified by the warm response I have received in making my fall report to the people of Florida."

Since September, Smathers has spoken before civic clubs, farm and labor groups, high school and university gatherings, and other groups throughout the state. He has addressed a large number of state and national conventions.

Contest Deadline Thursday

Entries for the annual Christmas Lightings Contest being conducted by the Seminole County Junior Chamber of Commerce must be in by Dec. 22, said Harry Capell, chairman of the Jaycee committee.

The committee explained that the contest this year is in one general category, including all outside decorations. And they add that anyone may enter by sending or bringing the entry blank, shown elsewhere in The Herald, to the Jaycee information booth located at North Park Avenue and Seminole Boulevard.

Judging will be done on Dec. 23 by a committee of four including Mrs. Margaret Wright of the Florida Power and Light Company, Willis J. Peacock of the Florida State Bank, Carl Overstreet of The Sanford Herald, and David Gatchel, City Commissioner-elect.

First prize consists of two \$25 Savings Bonds contributed by the Sanford Atlantic National Bank and the Florida State Bank and a traveling trophy with the winner's name engraved on it contributed by the Florida Power and Light Company.

Second prize is a \$25 Saving Bond contributed by the Florida Power and Light Company. Third prize is a \$25 Saving Bond contributed by The Sanford Herald. And the fourth prize is a \$25 certificate contributed by the Jaycee Service Store and a \$25 certificate contributed by the Jewellers.

Joe Baker Directs Parking Of Autos At Mayfair Open

Thousands of automobiles at the first annual Mayfair Inn \$15,000 PGA Open, under the direction of Joe Baker, Ullingham acres of space designated for parking, in and around the Mayfair Inn's Seminole County golf course, Baker directed the parking by giving instructions from various locations by way of short wave radio and walkie talkies operated by Sanford National Guardsmen.

Mayfair Inn Manager Frank Mebane Jr., said, "Baker did a wonderful job of coordinating the activities of a corps of volunteers from the Seminole County Junior Chamber of Commerce and the Sanford Kiwanis Club."

Also under the direction of Baker were the marshals who directed the galleries around the course as crowds followed their favorite golfer from green to green throughout the tournament.

"Without the help of Joe Baker," said Manager Mebane, "we would have certainly been at a loss in the parking of cars and the directing of the many marshals in their duties."

Keeping the eager crowds back from the vicinity of play, relaying information to the Pro Shop as play progressed around the course, and the parking of automobiles were a few of the duties of the marshals under the direction of Joe Baker.

Indigent Patients To Be Handled In Same Manner

Admissions to the new Seminole Memorial Hospital, for indigent patients, will be handled in the same manner as heretofore, was the decision of the Board of County Commissioners this morning as it discussed forthcoming problems with Dr. Charles Park Sr., County Physician and Mrs. Abbie W. Boyd, director of the Seminole County Welfare Department.

"We're going to have to get something straight as to the certifying of indigent patients for the new hospital," Chairman John Meach explained to the Board as the discussions were initiated.

Dr. Park told the Board that in the past Mrs. Boyd had first been certifying the patients except in the cases of emergency surgery which was immediately admitted and investigations followed.

As the Chief of Staff at the Seminole Memorial Hospital, Dr. Park explained that a service has been initiated with four staff doctors doing their share of surgery according to the doctor having the duty in any week.

It was also explained that the use of the vocational rehabilitation services and cancer clinic would be continued because of the type cases referred to them.

The hospital will not do any screening of cases, Dr. Park explained.

Commissioner Otis Fouracre said, "I think these cases should be handled as they have been in the past."

Dr. Park explained that "It is my suggestion that you write a letter to Harry Weir, Administrator of the Seminole Memorial Hospital, Dr. Orville Barke, County Physician, myself as county surgeon, as well as to Mrs. Boyd, explaining the system that you wish to use so that we will have some authority on which to act."

Commissioner Fouracre said, "It will be the same system that we have used before."

Commissioner B. C. Dodd commented, "I don't feel that we want to change our setup from what it is."

The Board of Commissioners authorized a letter from County Attorney Mack N. Cleveland Jr., explaining the system by which indigent patients would be screened in the new hospital when it is put into operation.

COURT DECISIONS

TALLAHASSEE (AP)—The Florida Supreme Court will head down decisions today instead of tomorrow the regular opinion day, then suspend activities until Jan. 2.

Surprise Visit Paid By Santa In Lake Mary

Santa Claus paid a surprise visit to Lake Mary last night at the annual Community Christmas Tree party held in the Community Building.

More than 250 children, accompanied by their parents, attended the annual event which is sponsored by the Lake Mary Chamber of Commerce with the cooperation of the three churches there, the school and the citizens.

A cedar Christmas tree was elaborately decorated for the event around which presents and candy were stacked awaiting the arrival of St. Nick and his helpers.

The Community Hall was packed to capacity with the biggest crowd ever to attend the annual Christmas event which this year was under the direction of Earl Toney as chairman and Mrs. Toney as co-chairman.

Children's lights were turned on as the Rev. L. W. Scott offered the invocation beginning the festivities of the evening.

Carol singing by the entire group was led by Mrs. J. L. Humphrey and Mrs. Cecil Nixon.

Santa Claus arrived, preceded by the blowing of sirens and the whooping, yelling, and usual clamor created by such an auspicious occasion. A present and bag of candy was presented to each child attending the annual Community Christmas tree.

Santa was assisted by Mrs. Toney, Mrs. McCracken, Mrs. Charles Mewyer, Mrs. Humphrey, and Mrs. Nixon.

Communal initiation consists of each child attending those who have attended these annual affairs, this one, held last night, "was the biggest one in the history of the local event."

"The community is to be congratulated," said one visitor who added, "no one in the community would want to miss the annual Community Christmas tree."

Lutheran Children Have Shopping Tour In Sanford Stores

Children from Lutheran Haven Home in Slavia totaling a baker's dozen completed their Christmas Shopping in Sanford yesterday with the help of the Seminole County Junior Chamber of Commerce.

An annual event for the children as well as for the local Jaycees, the Christmas Shopping Tour brings an unusual amount of smiles to the children who receive their shopping money from funds raised by the Jaycees from the sale of balloons during the Christmas parade event.

Jaycee Chairman Bob Cushing, in charge of the tour for the children, presented each of the 13 children with an envelope containing some dollars.

Accompanied by the Rev. Gunther K. W. Pagel, Superintendent of the home, and Cushing, the children visited Sanford stores choosing gifts for their friends and loved ones and for each other.

Records Are Broken By Last Month's Tax Collections

John L. Galloway, County Tax Collector, said yesterday collections for November amounted to \$671,801.18 a record for Seminole County.

This amount is broken down as follows: County Taxes \$644,875.80, Intangible Personal Property Tax \$17,935.08, Intangible Class "C" Tax \$2,646.36, Slavia Drainage District Tax \$1,656.05, Occupational Licenses \$1,186.13, Beverages Licenses \$25.35 and Automobile Tags \$3,516.27.

The County Taxes amounted to 69.9 per cent of the entire tax roll of \$962,047.78. Tax Payers who paid during this period were allowed four per cent discount which amounted to \$26,356.46. This discount dropped to three per cent in December, two per cent in January, one per cent in February and not in March.

On April 1 any tax not paid becomes delinquent and subject to penalties. It is desirable to the taxpayer to pay before April 1 and avoid penalties.

Frank St. Pierre Burial Thursday

Frank St. Pierre, 66, died at St. Vincent Hospital in Jacksonville last night after being confined there for 11 days.

Born April 15, 1868 in Wolfboro, N. H., he had made his home in Sanford for the past three years and resided at 408 W. 16th St. He came to this city from South Portland, Me., and was employed as a cabinet maker at Campbell's Cabinet Shop. He was a member of the Sanford Central Baptist Church, the Masonic Lodge of Brighton, Me., and of the Carpenters local union of Sanford.

Survivors include the widow, Mrs. Eva M. St. Pierre of Sanford; two sons, James W. St. Pierre of South Windham, Me., Francis Earl St. Pierre of Sanford; three sisters, Mrs. William Hoags, Farmington, N. H.; Mrs. Lucy Dumas, Chicago, Ill. and Mrs. Della Martel, Los Angeles, Cal.; and one brother, Joseph St. Pierre, Los Angeles, Cal.

Funeral services will be conducted at 4:30 p. m. Thursday at the Brison Funeral Home with the Rev. J. W. Parnham of the Central Baptist Church officiating. Burial will be in Oaklawn Memorial Park.

January-October Period Shows 264 Marriages Here

There were 264 marriages in Seminole County during the period of January through October 1933, according to the Florida State Board of Health as shown in its Florida Vital Statistics report issued today.

In the same period of time 127 divorces and annulments were recorded in Seminole County.

Also shown in the report were 664 births, 341 white and 323 non-white. A total of 255 deaths and 21 infant deaths were shown in the report made public today.

There were three deaths from tuberculosis, according to the report, one death from syphilis, 46 deaths from cancer, five caused by diabetes, one from anemia, and 16 recorded caused by influenza and pneumonia.

Other causes for death and their totals include: cerebral vascular disease, 30; heart disease, 60; all other circulatory diseases, 13; nephritis and nephrosis, six; motor vehicle accidents, five; and other accidents, 12.

According to the monthly report distributed by the Florida State Board of Health, the leading cause for deaths in Seminole County was cancer, with heart disease second in the number of recorded deaths, and cerebral vascular disease taking the third highest toll.

Births exceeded deaths by a ratio of nearly three to one in Seminole County during the 10 month period of January through October of this year.

Hussein Dissolves Jordan Parliament

JERUSALEM (AP)—King Hussein has dissolved Jordan's Parliament in a drastic move to end riots against King the Arab country in the Baghdad Pact. The mounting violence meanwhile brought a strike in Bethlehem, resulting itself in the annual Christmas pilgrimages.

The dissolution yesterday automatically toppled Premier Nazim K. Malalla's government for the second Cabinet crisis in less than a week. Premier Said El Mufri resigned last Wednesday after British offered to supply Jordan with new heavy arms and jet fighters if the country would join the Baghdad Pact.

The King said he had dissolved the Parliament because of the riots and the mounting violence against the Arab country in the Baghdad Pact.

AL BALDING GARRISON his first prize check of \$2,400 as he came out on top in the Annual Mayfair Inn Open last Sunday. (Left to right) are: Horace Stoneham, head of the New York Giants organization; Tom Standley, playing captain; Balding; and Joe, Leo Armstrong. (Staff Photo)

Pinecrest Plat Is Okayed Today By County Board

Matters coming before the Board of Seminole County Commissioners this morning for discussion and approval included a plat for South Pinecrest Subdivision, First Addition.

The plat was approved without discussion. The new area is adjacent to South Park Avenue and Onuro Road.

Approval of the commissioners for the repair of the roof to the Canning Kitchen on 25th St., was received this morning when Commissioner Fred Dyon reported on the cost of various additions and changes to the building.

To meet with the overall request for ceiling and repair of the roof, as well as a cooling system for the building, would cost in the neighborhood of \$2,000, Dyon said.

A request for an appropriation to the Seminole County Chamber of Commerce for an advertising fund was delayed until the first meeting in January.

John Ivey, chairman of the Chamber of Commerce Finance and Budget Committee, asked the Board not to change their appropriation from the amount heretofore allotted to the Chamber of Commerce.

Ivey said, "In face of the growth of Seminole County, we feel that we have been generous in asking for the same amount that was appropriated last year."

WHOOFS! WHERE'S CHIVALRY?

Have you heard about a pert young lady when she walked into B. L. Perkins Men's Store and fell flat on her face in front of three college gentlemen who just stood there and laughed? You can say what you want about the age of chivalry not being dead, but we still think that if it hasn't died, the old boy has one foot on a banana peel while trying to climb out of his grave. Don't you agree? Please—don't say!

ADDITIONAL LOCAL NEWS ON PAGE FRONT

FROM "A" to "XMAS" . . . SANFORD SANTAS Use The CLASSIFIED



If It's Worth Anything
It's Worth Advertising In
CLASSIFIED ADS

Phone 1821
WANT AD SERVICE

WANT AD RATES

The Following Rates are now in effect.
15c Per Line for One Insertion
10c Per Line for Three Insertions
14c Per Line for Five Insertions
11c Per Line for Each 25 In.

MINIMUM RATE: 6c

FOR RENT

FURNISHED APTS.
263 West 1st. Or Call at Furniture Center, 116 West 1st.

WELAKA APARTMENTS: rooms, private baths. 114 W. First St.

Rollaway and Baby Beds. Day, Week or month—Tel. 128. Furniture Center, 116 West First.

Avalon Apts. Efficiency. Phone 720-W.

SEE Seminole Realty for Desirable Homes and Apts. Phone 37.

CLEAN 2 Bedroom Furnished Apartment. Close to 217 Oak Ave. Phone 314.

LAKE HAVEN — Furnished House. Phone 117 or 1374-J.

TWO-Bedroom Apartment. Clean, attractive, furnished. Use of Garage and telephone. 874. Phone 1387.

FURN. Efficiency Apt. Highway 17-82 South City Limits. Phone 2517-W. Slumberland Court.

FURNISHED 3 Room, bath, full kitchen. By week or month. Five Points Hotel, 4 miles South on 17-82.

NICELY furnished 3 Bedroom Apartment. Phone 2164 after 4.

EFFICIENCY Apartment. Suitable for bachelor or couple. am bath, private bath, shower. Conveniently located. Across from Post Office. Inquire: Max-Jacobson Dept. Store.

Furnished 3 rooms, bath, full bath. All private. Phone 2030-J.

NICE rooms. 64. week. Ph. 1913-W.

NEW 2-bedroom unfurnished Apt. screened porch, tile bath. One block North of Pinecrest School and near Shopping Center. 2817 Elm Ave.

Furnished Apt. 800 Park Ave.

GARAGE APT. 3 rooms and bath. large screened porch, garage, electric kitchen, close in Ph. 538 or 1387. Adults only.

Lower 2 Room Apt. and bath. Phone 2863-W, 113 Elm Ave.

TWO BEDROOM furnished house. 113 W. 19th. Call 664-W after 8:30.

FURNISHED Apt. Private entrance and bath. utilities furnished. Phone 841-W.

TWO Room downstairs Apt. Private entrance and bath, utilities. Phone 662-W.

TWO-BEDROOM, 1 Bath Apt. nicely furnished. New kitchen, circulating bath. Ph. 800, 1913 Sanford Ave. Couple only.

FURN. Cottage. Phone 361-J.

WANTED TO RENT

NAVAL Officer, wife and three children desire 3 or 4 Bedroom unfurnished, one story home. Contact: Lt. Cmdr. Burkholder between 4:30 and 6 p. m. Phone 1380. Extension 274.

REAL ESTATE FOR SALE

J. W. HALL, REALTOR. Florida State Bank Building "Call Hall" Phone 1718.

Large Front House LARGELY KNIGHT Pine Kitchen, two bedrooms, of concrete block construction. Large lot. Store & refrigerator optional. \$19,900. With terms. To Help You Buy or Sell See L. Payne, Broker, Associated B. Henderson, Assoc. Ph. 371 — 17-25 at Slawatha

Possession in time see Christmas. Two bedroom, one bath with hard wood floors, tile kitchen and kitchen equipment. Located, 2103 Amelia in Highland Park. Can be handled for only \$12,000. Call 1718 monthly. Total price \$2,000. No closing costs. Robert A. Williams, Realtor, Raymond Landmark, Associate, Phone 1675 Atlantic Bank Bldg.

HAYMOND H. BARR, BROKER O. H. HARRISON, BROKER S. D. HICKMAN, Associate 260 South Park Ave. Phone 321

For Your Best Home See Callan and Murphy, Realtors, 120 S. Park Ave., Phone 322

REAL ESTATE FOR SALE

IF IT IS REAL ESTATE ask Crumley & Mastick at 117 South Park Phone 778 They Know

BRAND NEW HOME 3-B. R. masonry home, quality construction, excellent plan, large corner lot just out of city, paved street. \$8,800. Terms.

3-B. R. home with Florida Room, situated in popular Franklin Terrace section. Home is in top condition and has been drastically reduced in price for quick sale! Elec. Range and Refrigerator. Immediate possession. \$11,100. Terms. 4% Financing.

The two homes mentioned above are our very best opportunities in 3-Bedroom homes. Buy your home this month or you will receive the benefits of Homestead Exemption.

Seminole Realty W. HENNING T. W. HENNING 1200 Park Ave. Phone 37 or 120

Wellborn C. Phillips, Jr. Since 1926 Sanford's Leading Builder of homes for over 1,500 people. Sales Office: Little Venice in Loch Arbor. Phone 1204

NO CHARGE List your houses and apts. for rent with us. For 60 days we SHALL NOT make any charge for finding a tenant, while the new incoming Navy Personnel are getting located.

81.32c. DOWN 3 BR. — CB. Nicer Section. Well landscaped — Tile bath. Hardwood Floors. \$43.74 per month. Including Ins. & Taxes.

Just like above but completely furnished with just one monthly payment for the Home. Appliances and furniture Only \$68. month. \$2,000 Down.

82c. DOWN 3 Bedroom Fr. Duplex, centrally located in City on large lot with shade. Furnished. \$2,700.

82.80c. Down — Three Bedroom, well preserved Frame House, and Garage with room and shower. On large well-landscaped lot including citrus and tropical fruits. Total price, \$8,000. No City taxes to pay! Close to Base and Schools.

83c. VALUE Large (1.14 ac. +/-), modern, 3 BR. CB. Fr. Home, built 1944. Just out of the City, on fenced plot. Has city water, sewer, paved roads, space heater, vestibular blinds, LIVING room with dining area is COMPLETELY electrically equipped, sage closets, utility room and full tile bath. This property appraised at \$12,500. If sold now, only \$11,000. Terms. Compare this one!

81.32c. Down 3 BR. Arbutus Siding. Kitchen equipped. Landscaped. This is a real clean deal.

ACREAGE 240 Acres, close to hard road. Partially fenced, 830. an acre. Sorry but cash

30 Acres including grove and lake tract. \$1,000. 25 acres

W. E. "BOB" STUMPER Realtor — General Insurance Gettrude B. Stumpe, Associate City Area, Associate Phone 2128 113 N. Park Ave.

ATTRACTIVELY DESIGNED 3-BEDROOM HOMES — PRICED from \$11,300 to \$14,000. FHA and VA (G.I.) Financed.

ODHAM & TUDOR, INC. Builders of Fine Homes for Florida Living. Sales Office—3935 So. French Ave. Phone 2108 or 2800

SERVICEMEN FHA has reduced Down Payments on this attractive 3-Bedroom House. Monthly payments, \$42.50

LOWELL E. GREEN Builder — Phone 1380 Office: 2604 S. Orlando St.

REAL ESTATE Listings Wanted Laura E. Guler, Broker 262 S. Orlando Dr. Ph. 1289

USED Electric coin dispenser drink box. Good running condition. Ideal for beer stores. Can be seen at The Sanford Herald. \$4.

ECHOLS' "Day-Or-Nighter" Sofa. Platform Rocker Chair Choice of Covering \$119.95

ECHOLS BEDDING CO. Corner 2nd & Magnolia Ph. 1233 "Red" Hamburger, Mgr. Open Monday's 11 to 5 p. m.

USED Electric coin dispenser drink box. Good running condition. Ideal for beer stores. Can be seen at The Sanford Herald. \$4.

—Factory to You— Aluminum Venetian Blinds Enclosed bead. Bag-proof bottom roll with plastic ends. Plastic or rayon tapes. Cotton or nylon cords. Searchlight Glass and Paint Co. 112-114 West 2nd St. Phone 320

FURNITURE SHOP COVERS. Used Dry Goods, 1277 West 12th St.

GET your cash for articles you no longer want. Free of charge. 1277 West 12th St.

QUICK CASH for Furniture. Additions, Replacements, Replacements, Replacements. Free of charge. 1277 West 12th St.

ARTICLES FOR SALE

CHRISTMAS SPECIAL
MODERN OCCASIONAL CHAIRS AND ROCKERS
Upholstered in beautiful Modern tapestry, smartly styled blonde arms and legs - with no-sag spring construction—your choice of Chair or Rocker.
\$9.95
See DOWN DELIVERS
Mather of Sanford
263-29 E. 1st St. Phone 127

ORANGES, tangerines, grapefruit. 2201 W. 25th St., J. T. Fortier.

Season FIRE WOOD, any amount or length, oak or lat pine. MQ Ranch, Bob Morris, Phone 785-J.

SALE OR TRADE — 1 1/2 Ton Chevrolet Truck, short wheel base. Phone 1099. K. A. Wiggins, Box 8, Enterprise.

1933 ALL STATE Motor Scooter, like new. \$150. Call 1169.

CHRISTMAS TREES delivered up to 7 ft. \$1.00, native short Pine. M. Q. Ranch, Bob Morris, Phone 785-J.

NEW 18" ROTARY Lawnmower. Can be seen at 1209 W. 20th St. Phone 2248-M.

GIRLS Bicycle, excellent condition. Sacrifice. \$15.00. 214-W. 11th St.

BLONDE Television Set, New. 212 W. 4th St. East Apt.

Small bungalow plane. Looks and plays like new. Only \$200. Cash or terms. Phone 1123-R.

LARGE QUANTITY once used Green Cabbage Bags. \$10. per hundred. Central City Bag Co. Phone Orlando 2118. Three miles West of Old Winter Garden Road.

COCKER SPANIEL puppies. Six weeks old, for Christmas. \$10. each. 1104 Myrtle, Phone 664-M.

Late model Electronix Cleaner. Like new with attachments. \$15. Phone 1723-R.

FOR SALE — 20" Bicycle. Call 483-M after 6.

NEW METAL ROOFING — 14" Corrugated — 14" Corrugated — 14" Corrugated. Get all your roofing needs at Sherman Concrete Pipe Co.

SPORTING GOODS

Straight Shooting USED GUNS
WINCHESTER 30-30 32.50
12 GA. STEVENS Double 39.95
12 GA. STEVENS Double Barrel 32.50
16 GA. J. C. HIGGINS, Bolt Action 24.95
16 GA. STEVENS, Single 34.00
16 GA. BANGS Pump 45.50
20 GA. STEVENS, Bolt Action 17.50
MOSSBERG Single Shot 22 5.95
Your authorized Browning Dealer, Winchester, Remington, Stevens, Mossberg and Marlin.

USED PISTOLS
32 COLT Automatic Pistol 39.95
38 Special Nickel Plated S & W 49.95
38 Special & W Nickel 39.95
Many new Pistols in Stock Smith & Wesson, Colt, Hi Standard, Ruger and IJ & R. How will YOU swap? How will you trade? Your old gun for a better one

Factory retail minimum prices
ROBSON Sporting Goods
264 East 1st St. Phone 306

HELP WANTED (female) 10A

BEAUTICIAN full or part time. Call, 971 or 2603-J.

OFFICE Assistant must have knowledge of Bookkeeping, Stenography and Typing. Apply Hollywood Shop

SPECIAL SERVICES — 11

FLOOR Sanding and Finishing Cleaning, waxing, Servicing Semi-Bols County since 1925 H. M. Gleason, Lake Mary.

Plumbing, Kresky Heating M. G. HODGES Service on All Water Pumps—Wells Drilled — Pumps Paola Road Phone 760

INSTALLATION of Linoleum, Carpets, Tiles. Sanford Linoleum & Tile Co. 127 W. 1st St. Phone 1917

For Better Plumbing See or Call W. J. KING 2000 South Park Phone 50

ORLANDO Morning Sentinel, Orlando Evening Star. Call Ralph Ray, 3150.

ENVELOPES, letterheads, stationery, invoices, hand bills, and programs, etc. Progressive Printing Co., Phone 408 — 483 West 13th St.

RANDALL ELECTRIC CO. Electrical Contracting and Repairs TV Service Center Rendix and Crosley Appliances. 112 Magnolia Ave. Ph. 113

P. M. CAMPBELL General Contractor "Homes of Distinction" 23-Way 17-28 Phone 1467

Space Heaters and Floor Furnaces. Liberal Trade-In.

Ray Hall 1207 Sanford Ave. Phone 2123

GATLIN BROTHERS Druggist and Builder Service Phones: 2221 — Sanford, 2233 — Geneva.

PLUMBING Contract and repair work. Free estimates. E. Harvey, 84 Sanford Ave. Phone 1528.

INTERIOR and EXTERIOR Painting, paper Hanging. Phone 313-W, Hutton & Walker.

INSURANCE — 16B Preferred Rates to Preferred Policyholders John Williams Ins. Agency 417 Sanford Atlantic Bank Phone 34

AUTOMOBILES-TRAILERS It will pay YOU to see US before you buy. Open Evenings and Sunday. Eastside Trailer Sales, Palatka, Fla.

1933 — 16 Ft. House Trailer, sleeps four, ideal for traveling. Combination ice and refrigerator. Electric brakes, Park Ave. Trailer Park Phone 2105.

AUTOMOBILE BROKERS — 18 CARS BOUGHT SOLD TRADED Roy Weel's Used Cars Sanford Ave. & 11th St.

ROBSON Sporting Goods Evinrude Sales & Service 301 E. 1st St. Phone 306

FURNITURE — 19 Buy your Furniture at Sorry's Warehouse Furniture Co. at 904 W. 1st St. All nationally adv. furniture at warehouse prices

ELECTRICAL SERVICE — 20 FRIGIDAIRE appliances, sales and service. G. H. High, Orlando, Fla. Phone 4151 or Sanford 1643-W after 6 p. m.

OFFICE EQUIPMENT — 21 HAYNES Office Machine Co., Typewriters, adding machines, Sales-Rentals, 314 Mag., Ph. 44.

BEAUTY PARLORS — 22 Eva-Boss Beauty Shop BEST in Workmanship and Materials. 108 East 2nd St. Phone 543

For ALL Your Beauty Needs call Harriett's Beauty Shop Phone 571 108 So. Oak Ave. (Open evenings by appointment.)

LAUNDRY SERVICE — 23 One hour — Wash and Damp Dry One hour 1/2 — Wash and Dry Fold Finished Laundry Sanitons Dry Cleaning Southside Landmark Bldg. South Side Foodmart Bldg. 104 East 25th St.

PLUMBING SERVICE — 24 L. L. 322—Plum Technician Phone 264, Route 1, Sanford.

NOT A PROJECT!

BUT — Homes of Real Individuals. Exquisite Farm Homes, Early American, Ultra Modern, Conventional & French Colonial types.

BUILT On Large Landscaped Lots in the best of neighborhoods.

COMPLETE with all the features you have dreamed about such as colored General Electric appliances and colored plumbing fixtures.

AND available at reasonable prices, with the best financing & with minimum down-payments.

Wellborn C. Phillips, Jr. Since 1926 Sanford's Leading Builder of homes for over 1,500 people. Sales Office: Little Venice in Loch Arbor. Phone 1204

SEMINOLE REALTY

Since 1926 Sanford's Leading Builder of homes for over 1,500 people. Sales Office: Little Venice in Loch Arbor. Phone 1204

NO CHARGE

List your houses and apts. for rent with us. For 60 days we SHALL NOT make any charge for finding a tenant, while the new incoming Navy Personnel are getting located.

81.32c. DOWN

3 BR. — CB. Nicer Section. Well landscaped — Tile bath. Hardwood Floors. \$43.74 per month. Including Ins. & Taxes.

Just like above but completely furnished with just one monthly payment for the Home. Appliances and furniture Only \$68. month. \$2,000 Down.

82c. DOWN

3 Bedroom Fr. Duplex, centrally located in City on large lot with shade. Furnished. \$2,700.

3 BR. Down — Three Bedroom, well preserved Frame House, and Garage with room and shower. On large well-landscaped lot including citrus and tropical fruits. Total price, \$8,000. No City taxes to pay! Close to Base and Schools.

83c. VALUE

Large (1.14 ac. +/-), modern, 3 BR. CB. Fr. Home, built 1944. Just out of the City, on fenced plot. Has city water, sewer, paved roads, space heater, vestibular blinds, LIVING room with dining area is COMPLETELY electrically equipped, sage closets, utility room and full tile bath. This property appraised at \$12,500. If sold now, only \$11,000. Terms. Compare this one!

81.32c. Down 3 BR. Arbutus Siding. Kitchen equipped. Landscaped. This is a real clean deal.

ACREAGE 240 Acres, close to hard road. Partially fenced, 830. an acre. Sorry but cash

30 Acres including grove and lake tract. \$1,000. 25 acres

W. E. "BOB" STUMPER Realtor — General Insurance Gettrude B. Stumpe, Associate City Area, Associate Phone 2128 113 N. Park Ave.

ATTRACTIVELY DESIGNED 3-BEDROOM HOMES — PRICED

from \$11,300 to \$14,000. FHA and VA (G.I.) Financed.

ODHAM & TUDOR, INC. Builders of Fine Homes for Florida Living. Sales Office—3935 So. French Ave. Phone 2108 or 2800

SERVICEMEN

FHA has reduced Down Payments on this attractive 3-Bedroom House. Monthly payments, \$42.50

LOWELL E. GREEN

Builder — Phone 1380 Office: 2604 S. Orlando St.

REAL ESTATE

Listings Wanted Laura E. Guler, Broker 262 S. Orlando Dr. Ph. 1289

USED Electric coin dispenser drink box. Good running condition. Ideal for beer stores. Can be seen at The Sanford Herald. \$4.

ECHOLS' "Day-Or-Nighter" Sofa. Platform Rocker Chair Choice of Covering \$119.95

ECHOLS BEDDING CO. Corner 2nd & Magnolia Ph. 1233 "Red" Hamburger, Mgr. Open Monday's 11 to 5 p. m.

USED Electric coin dispenser drink box. Good running condition. Ideal for beer stores. Can be seen at The Sanford Herald. \$4.

—Factory to You— Aluminum Venetian Blinds Enclosed bead. Bag-proof bottom roll with plastic ends. Plastic or rayon tapes. Cotton or nylon cords. Searchlight Glass and Paint Co. 112-114 West 2nd St. Phone 320

FURNITURE SHOP COVERS. Used Dry Goods, 1277 West 12th St.

GET your cash for articles you no longer want. Free of charge. 1277 West 12th St.

QUICK CASH for Furniture. Additions, Replacements, Replacements, Replacements. Free of charge. 1277 West 12th St.

REAL ESTATE FOR SALE

IF IT IS REAL ESTATE ask Crumley & Mastick at 117 South Park Phone 778 They Know

BRAND NEW HOME 3-B. R. masonry home, quality construction, excellent plan, large corner lot just out of city, paved street. \$8,800. Terms.

3-B. R. home with Florida Room, situated in popular Franklin Terrace section. Home is in top condition and has been drastically reduced in price for quick sale! Elec. Range and Refrigerator. Immediate possession. \$11,100. Terms. 4% Financing.

The two homes mentioned above are our very best opportunities in 3-Bedroom homes. Buy your home this month or you will receive the benefits of Homestead Exemption.

Seminole Realty W. HENNING T. W. HENNING 1200 Park Ave. Phone 37 or 120

Wellborn C. Phillips, Jr. Since 1926 Sanford's Leading Builder of homes for over 1,500 people. Sales Office: Little Venice in Loch Arbor. Phone 1204

SEMINOLE REALTY

Since 1926 Sanford's Leading Builder of homes for over 1,500 people. Sales Office: Little Venice in Loch Arbor. Phone 1204

NO CHARGE

List your houses and apts. for rent with us. For 60 days we SHALL NOT make any charge for finding a tenant, while the new incoming Navy Personnel are getting located.

81.32c. DOWN

3 BR. — CB. Nicer Section. Well landscaped — Tile bath. Hardwood Floors. \$43.74 per month. Including Ins. & Taxes.

Just like above but completely furnished with just one monthly payment for the Home. Appliances and furniture Only \$68. month. \$2,000 Down.

82c. DOWN

3 Bedroom Fr. Duplex, centrally located in City on large lot with shade. Furnished. \$2,700.

3 BR. Down — Three Bedroom, well preserved Frame House, and Garage with room and shower. On large well-landscaped lot including citrus and tropical fruits. Total price, \$8,000. No City taxes to pay! Close to Base and Schools.

83c. VALUE

Large (1.14 ac. +/-), modern, 3 BR. CB. Fr. Home, built 1944. Just out of the City, on fenced plot. Has city water, sewer, paved roads, space heater, vestibular blinds, LIVING room with dining area is COMPLETELY electrically equipped, sage closets, utility room and full tile bath. This property appraised at \$12,500. If sold now, only \$11,000. Terms. Compare this one!

81.32c. Down 3 BR. Arbutus Siding. Kitchen equipped. Landscaped. This is a real clean deal.

ACREAGE 240 Acres, close to hard road. Partially fenced, 830. an acre. Sorry but cash

30 Acres including grove and lake tract. \$1,000. 25 acres

W. E. "BOB" STUMPER Realtor — General Insurance Gettrude B. Stumpe, Associate City Area, Associate Phone 2128 113 N. Park Ave.

ATTRACTIVELY DESIGNED 3-BEDROOM HOMES — PRICED

from \$11,300 to \$14,000. FHA and VA (G.I.) Financed.

ODHAM & TUDOR, INC. Builders of Fine Homes for Florida Living. Sales Office—3935 So. French Ave. Phone 2108 or 2800

SERVICEMEN

FHA has reduced Down Payments on this attractive 3-Bedroom House. Monthly payments, \$42.50

LOWELL E. GREEN

Builder — Phone 1380 Office: 2604 S. Orlando St.

REAL ESTATE

Listings Wanted Laura E. Guler, Broker 262 S. Orlando Dr. Ph. 1289

USED Electric coin dispenser drink box. Good running condition. Ideal for beer stores. Can be seen at The Sanford Herald. \$4.

ECHOLS' "Day-Or-Nighter" Sofa. Platform Rocker Chair Choice of Covering \$119.95

ECHOLS BEDDING CO. Corner 2nd & Magnolia Ph. 1233 "Red" Hamburger, Mgr. Open Monday's 11 to 5 p. m.

USED Electric coin dispenser drink box. Good running condition. Ideal for beer stores. Can be seen at The Sanford Herald. \$4.

—Factory to You— Aluminum Venetian Blinds Enclosed bead. Bag-proof bottom roll with plastic ends. Plastic or rayon tapes. Cotton or nylon cords. Searchlight Glass and Paint Co. 112-114 West 2nd St. Phone 320

FURNITURE SHOP COVERS. Used Dry Goods, 1277 West 12th St.

GET your cash for articles you no longer want. Free of charge. 1277 West 12th St.

QUICK CASH for Furniture. Additions, Replacements, Replacements, Replacements. Free of charge. 1277 West 12th St.

ARTICLES FOR SALE

CHRISTMAS SPECIAL
MODERN OCCASIONAL CHAIRS AND ROCKERS
Upholstered in beautiful Modern tapestry, smartly styled blonde arms and legs - with no-sag spring construction—your choice of Chair or Rocker.
\$9.95
See DOWN DELIVERS
Mather of Sanford
263-29 E. 1st St. Phone 127

ORANGES, tangerines, grapefruit. 2201 W. 25th St., J. T. Fortier.

Season FIRE WOOD, any amount or length, oak or lat pine. MQ Ranch, Bob Morris, Phone 785-J.

SALE OR TRADE — 1 1/2 Ton Chevrolet Truck, short wheel base. Phone 1099. K. A. Wiggins, Box 8, Enterprise.

1933 ALL STATE Motor Scooter, like new. \$150. Call 1169.

CHRISTMAS TREES delivered up to 7 ft. \$1.00, native short Pine. M. Q. Ranch, Bob Morris, Phone 785-J.

NEW 18" ROTARY Lawnmower. Can be seen at 1209 W. 20th St. Phone 2248-M.

GIRLS Bicycle, excellent condition. Sacrifice. \$15.00. 214-W. 11th St.

BLONDE Television Set, New. 212 W. 4th St. East Apt.

Small bungalow plane. Looks and plays like new. Only \$200. Cash or terms. Phone 1123-R.

LARGE QUANTITY once used Green Cabbage Bags. \$10. per hundred. Central City Bag Co. Phone Orlando 2118. Three miles West of Old Winter Garden Road.

COCKER SPANIEL puppies. Six weeks old, for Christmas. \$10. each. 1104 Myrtle, Phone 664-M.

Late model Electronix Cleaner. Like new with attachments. \$15. Phone 1723-R.

FOR SALE — 20" Bicycle. Call 483-M after 6.

NEW METAL ROOFING — 14" Corrugated — 14" Corrugated — 14" Corrugated. Get all your roofing needs at Sherman Concrete Pipe Co.

SPORTING GOODS

Straight Shooting USED GUNS
WINCHESTER 30-30 32.50
12 GA. STEVENS Double 39.95
12 GA. STEVENS Double Barrel 32.50
16 GA. J. C. HIGGINS, Bolt Action 24.95
16 GA. STEVENS, Single 34.00
16 GA. BANGS Pump 45.50
20 GA. STEVENS, Bolt Action 17.50
MOSSBERG Single Shot 22 5.95
Your authorized Browning Dealer, Winchester, Remington, Stevens, Mossberg and Marlin.

USED PISTOLS
32 COLT Automatic Pistol 39.95
38 Special Nickel Plated S & W 49.95
38 Special & W Nickel 39.95
Many new Pistols in Stock Smith & Wesson, Colt, Hi Standard, Ruger and IJ & R. How will YOU swap? How will you trade? Your old gun for a better one

Factory retail minimum prices
ROBSON Sporting Goods
264 East 1st St. Phone 306

HELP WANTED (female) 10A

BEAUTICIAN full or part time. Call, 971 or 2603-J.

OFFICE Assistant must have knowledge of Bookkeeping, Stenography and Typing. Apply Hollywood Shop

SPECIAL SERVICES — 11

FLOOR Sanding and Finishing Cleaning, waxing, Servicing Semi-Bols County since 1925 H. M. Gleason, Lake Mary.

Plumbing, Kresky Heating M. G. HODGES Service on All Water Pumps—Wells Drilled — Pumps Paola Road Phone 760

INSTALLATION of Linoleum, Carpets, Tiles. Sanford Linoleum & Tile Co. 127 W. 1st St. Phone 1917

For Better Plumbing See or Call W. J. KING 2000 South Park Phone 50

ORLANDO Morning Sentinel, Orlando Evening Star. Call Ralph Ray, 3150.

ENVELOPES, letterheads, stationery, invoices, hand bills, and programs, etc. Progressive Printing Co., Phone 408 — 483 West 13th St.

RANDALL ELECTRIC CO. Electrical Contracting and Repairs TV Service Center Rendix and Crosley Appliances. 112 Magnolia Ave. Ph. 113

P. M. CAMPBELL General Contractor "Homes of Distinction" 23-Way 17-28 Phone 1467

Space Heaters and Floor Furnaces. Liberal Trade-In.

Ray Hall 1207 Sanford Ave. Phone 2123

GATLIN BROTHERS Druggist and Builder Service Phones: 2221 — Sanford, 2233 — Geneva.

PLUMBING Contract and repair work. Free estimates. E. Harvey, 84 Sanford Ave. Phone 1528.

INTERIOR and EXTERIOR Painting, paper Hanging. Phone 313-W, Hutton & Walker.

INSURANCE — 16B Preferred Rates to Preferred Policyholders John Williams Ins. Agency 417 Sanford Atlantic Bank Phone 34

AUTOMOBILES-TRAILERS It will pay YOU to see US before you buy. Open Evenings and Sunday. Eastside Trailer Sales, Palatka, Fla.

1933 — 16 Ft. House Trailer, sleeps four, ideal for traveling. Combination ice and refrigerator. Electric brakes, Park Ave. Trailer Park Phone 2105.

AUTOMOBILE BROKERS — 18 CARS BOUGHT SOLD TRADED Roy Weel's Used Cars Sanford Ave. & 11th St.

ROBSON Sporting Goods Evinrude Sales & Service 301 E. 1st St. Phone 306

FURNITURE — 19 Buy your Furniture at Sorry's Warehouse Furniture Co. at 904 W. 1st St. All nationally adv. furniture at warehouse prices

ELECTRICAL SERVICE — 20 FRIGIDAIRE appliances, sales and service. G. H. High, Orlando, Fla. Phone 4151 or Sanford 1643-W after 6 p. m.

OFFICE EQUIPMENT — 21 HAYNES Office Machine Co., Typewriters, adding machines, Sales-Rentals, 314 Mag., Ph. 44.

BEAUTY PARLORS — 22 Eva-Boss Beauty Shop BEST in Workmanship and Materials. 108 East 2nd St. Phone 543

For ALL Your Beauty Needs call Harriett's Beauty Shop Phone 571 108 So. Oak Ave. (Open evenings by appointment.)

LAUNDRY SERVICE — 23 One hour — Wash and Damp Dry One hour 1/2 — Wash and Dry Fold Finished Laundry Sanitons Dry Cleaning Southside Landmark Bldg. South Side Foodmart Bldg. 104 East 25th St.

PLUMBING SERVICE — 24 L. L. 322—Plum Technician Phone 264, Route 1, Sanford.

HELP WANTED (female) 10A

BEAUTICIAN full or part time. Call, 971 or 2603-J.

OFFICE Assistant must have knowledge of Bookkeeping, Stenography and Typing. Apply Hollywood Shop

SPECIAL SERVICES — 11

FLOOR Sanding and Finishing Cleaning, waxing, Servicing Semi-Bols County since 1925 H. M. Gleason, Lake Mary.

Plumbing, Kresky Heating M. G. HODGES Service on All Water Pumps—Wells Drilled — Pumps Paola Road Phone 760

INSTALLATION of Linoleum, Carpets, Tiles. Sanford Linoleum & Tile Co. 127 W. 1st St. Phone 1917

For Better Plumbing See or Call W. J. KING 2000 South Park Phone 50

ORLAND

San Francisco Dons Boasting Long String Of 31 Straight Wins

Mississippi Rebels Come Up With Two Top Point Getters

THE ASSOCIATED PRESS
MISSISSIPPI'S high shifting basketball Rebels have produced two of the Southeastern Conference's top point getters in the early stages of the 1955-56 season.

Rebel forward Jack Gibbon, a diving southpaw shooter, tops the league's scorers with a 17 average of 25 points a game. His teammate and captain, guard Jerry Gibson, is in the No. 2 scoring slot with an 18.33 average.

Gibbon and Gynum were unable to save the Rebels from their first defeat of the season Saturday night, however. The Texas Longhorns topped Ole Miss 66-73 in the Blue-Gray Tournament championship in Montgomery.

Gynum collected 13 points and Gibbon 12 against Texas.

Running second to Gibbon in the point parade through games of the 17 was Tennessee's Carl West, a member of last season's all-conference team. West is averaging 23.30 points a game.

George Linn of Alabama is in third spot with a 22.17 mark.

Mississippi wasn't the only SEC team which tasted defeat in the Blue-Gray Tournament. Auburn lost to Eastern Kentucky 63-71 in the consolation game, bringing the team's record down to two victories and two losses.

Vanderbilt and Florida, with 4-0 records, are the league's only undefeated teams.

Kentucky, odds on favorite to win off with the SEC title in pre-season figuring, bowed to Temple Dec. 10 and had two close squeaks last week. The Wildcats edged Temple 71-69 Monday night and slipped to Maryland 62-61 Friday night. Saturday night's 61-65 trouncing of Idaho was more like what had been expected of the Wildcats this season.

Kentucky is fourth in the standings with a 4-1 record behind Ole Miss which has won six and lost one.

Other Saturday night games, Temple beat Springfield 66-61, St. Johns tripped Alabama 67-79, Loyola of the South beat Louisiana State 71-65 and Georgia Tech beat Georgia 75-62.

Seven SEC teams are in action today and tonight. Ohio State is at Tulane, Alabama at Holy Cross, Georgia at Vanderbilt for non-SEC tilt. Florida at Miami and Tennessee and Mississippi State in the Carrousel Tournament at Charlotte. Tennessee plays Boston University in an afternoon game and Mississippi State meets Wake Forest in the second game of a night twill.

None of the meetings between SEC teams will count in the conference standings until after the holidays.

Willie Pastrano Meets Rex Layne In Bout Tonight

THE ASSOCIATED PRESS
Willie Pastrano, a right new face from New Orleans, meets his first "name" heavyweight tonight in Rex Layne, a hulking veteran who has fought the m all from Rocky Marciano on down.

The New Orleans match should give a good line on Pastrano's ability to handle big men. Layne, at about 200 pounds, probably will outweigh the home town boy by at least 25 pounds.

Pastrano mixed with middleweights and light heavies until he boxed Joe Rowan at Madison Square Garden Nov. 18. This match is supposed to launch him as a full-fledged heavy, bypassing Rowan but, he celebrated his 20th birthday.

Knockout or nothing is the prospect at St. Nicholas Arena in New York tonight when left-hooking Carmine Fiore of Brooklyn fights Gene Polier, the ever-ready puncher from Niagara Falls, N.Y.

Du Mont will telecast.

Fiore, 26, came back from a one-year layoff to outpoint Rinky Nocero Nov. 21. Polier has taken a rest after a strenuous summer season when he won five of seven, most of them at St. Nick's. Fiore's record is 48-15 and Polier's 13-3-3 for 18 starts.

Time Was When College Students Hustled For Home

THE ASSOCIATED PRESS
Time was when college students, basketball players included, hustled home for Christmas. Now the cagers still hustle, but over the hardwoods in the many holiday tournaments played across the land.

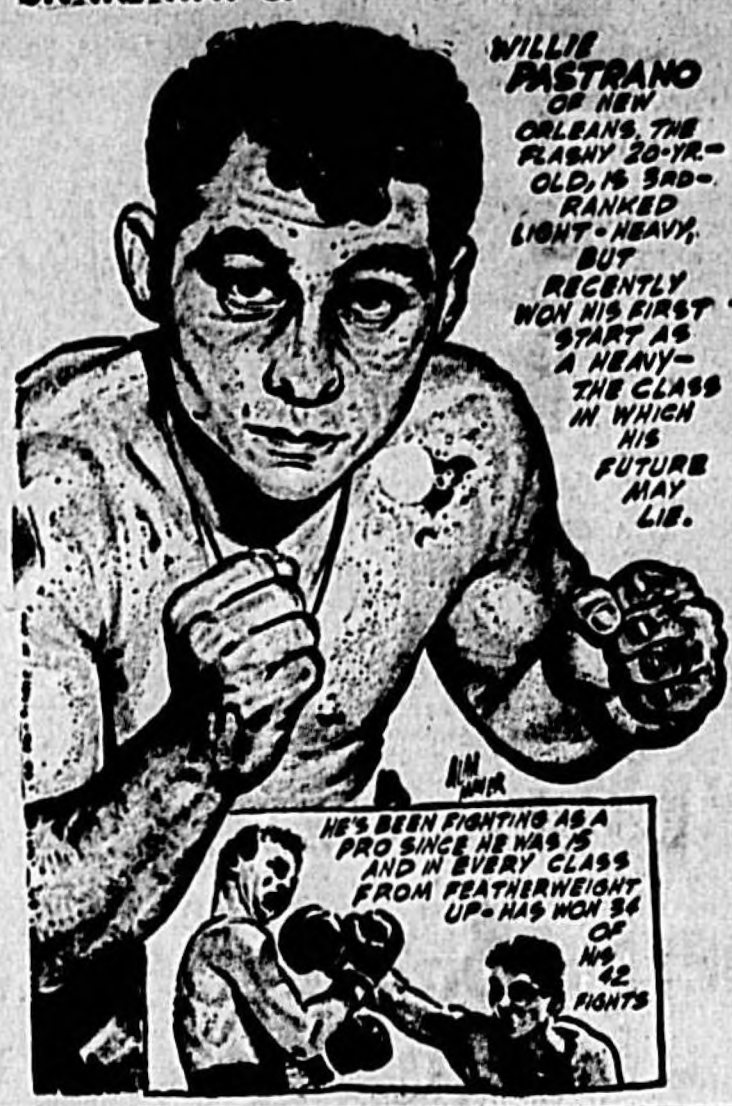
One of the latest, the Carrousel Classic, opens here this afternoon with Tennessee and Boston University meeting in the first of 12 games in three days at Charlotte's new Coliseum.

A second afternoon game matches Florida State and Clemson. Tonight's two games pair Colgate and Davidson, and Wake Forest against Mississippi State.

Each team plays every day, today's losers dropping in a consolation bracket.

For Clemson the tournament is the first of three in two weeks. After this one the Atlantic Coast Conference team moves on to the Gator Bowl event at Jacksonville, Fla., Dec. 25-26. Then comes an appearance in the Senior Bowl tournament at Mobile, Ala., Jan. 4-5.

Florida State will play in the Orange Bowl event at Miami, Fla., Dec. 28-30.



WILLIE PASTRANO OF NEW ORLEANS, THE FLASHY 20-YR.-OLD, IS 3RD-RANKED LIGHT-HEAVY, BUT RECENTLY WON HIS FIRST START AS A HEAVY—THE CLASS IN WHICH HIS FUTURE MAY LIE.

HE'S BEEN FIGHTING AS A PRO SINCE HE WAS 15 AND IN EVERY CLASS FROM FEATHERWEIGHT UP—HAS WON 15 OF HIS 18 FIGHTS.

Bill Lillard Reigns As Bowling Champion

CHICAGO (AP)—Billy Lillard reigns today as winner by a scant eight pins—of the coveted National All-Star Bowling tournament championship in the closest finish in the meet's 15-year history.

Lillard, 28-year-old Chicagoan, turned the trick last night by nosing out veteran Joe Wilman of suburban Berwyn in a climactic finish.

Lillard took the championship by .06 Petersen points, or eight pins, with a 304.30 point total to Wilman's 304.22.

Another windup squeeze saw Anita Cantaline, 25, Detroit bowling instructor, take the women's crown by edging Boris Pufner, a Los Angeles 61er, 144.40 Petersen points to 144.11, or 27 pins.

The men's championship was decided on Wilman's final ball in the 10th frame of his last game. Needing only a spare to win, Wilman left the 1-3-10 set up, "washout." In trying to convert the spare, Wilman's, who'll be 30 in eight days, picked off the two pin and left the remainder standing. The final roll cost him the title.

J. Barber Shoots Final 67 For Win

MONTEBELLO, Calif. (AP)—Jerry Barber, efficient little shotmaker from Los Angeles, shot a final round 67 to bag a four-stroke victory in the \$5,000 Montebello Open golf tournament.

Barber's 288 for the 54-hole tournament gave him first money of \$1,000 yesterday. Gene Littler, defending champion from San Diego, was second with 289, good for \$700.

Jimmy Clark of Laguna Beach was third at 210.

Four-time winner Lloyd Mangrum, in his first start in a year, finished with 214.

Matinee Every Saturday Starting Dec. 31 Rain or Shine



DOG RACING Season Opens Monday, Dec. 26th

• Post-Time 8:10 P. M. • Heated Stands
• Modernized Track • Jerry Collins, Manager

Schooling Races Tonight 7:30

SANFORD HERALD

Big Judgment Day Is Only Week Off For Cleveland 11

CLEVELAND (AP)—Somehow between sun and snow, in a limbo of too hot and too cold, the training plans of the Cleveland Browns have gone awry.

Judgment Day — when the Browns play the Rams in Los Angeles for the National Football League crown — is only a week away and the Browns figure the weatherman has been weighing the scales against them.

Cleveland Coach Paul Brown, because he felt too much California sunshine might sap the strength of his men had decided to give them most of their practice at home. Good, invigorating air would imbue the Browns with the proper spirit.

The result: The Browns have been musing around in snow, wind and cold.

"Why, it was so cold last week that they couldn't even work up a sweat," Brown complained. "About all we could do was run around on the game preparations."

Giving the weather its due, Brown admitted that "we need some good workouts to get the boys loosened up."

He has only three more home practices scheduled before the Browns leave for the West Coast Saturday. The team will hold a regular workout in Pasadena Christmas Eve and a 20-minute session Christmas Day, the day before the game.

Brown could have his men work out in a gymnasium here, but he hates to do so on a theory that wood floors do no good to legs accustomed to sod.

Meanwhile, the weatherman has this forecast for today:
Colder. Windy. Snow flurries. Temperature skidding from high of 23 last midnight to low of 0-3 tonight.

Ed Felt was after foxes when a flock of Canada geese flew by at Ampring, Ont. He bagged two with one shot.

Ft. Hood Tankers Roll Over Gators In Shrimp Bowl

GALVESTON, Tex. (AP)—The Ft. Hood Tankers, who think they are tops in service football, rolled over the Little Creek, Va., Navy Gators 33-13 in the seventh annual Shrimp Bowl yesterday.

Piloted by Do. Gottlieb, Sam Houston State's (Tex.) Little All-America of a few seasons ago, the Tankers romped to 289 yards on the ground and 186 in the air to roll up 27 points before the Gators could score.

A crowd of 7,500 watched Gottlieb take to the air with a punt passing and Carl Mayes, former University of Texas star, and Roy Mays pulverize the Gators with their running. Steve Mellinger, former Kentucky Gridman, chalked up a touchdown with a 25-yard run.

Coach Martin Finally Looks Over Pictures

FORT WORTH, Tex. (AP)—Coach Abe Martin has finally gotten around to looking over pictures of Mississippi games and that may be the season he's calling for his Texas Christian Horned Frogs to step up the pace in practice for the Cotton Bowl.

Martin watched Mississippi's victories over Louisiana State and Mississippi State and said he was greatly impressed.

"Mississippi is a good all around club, it handles the ball beautifully, has overall team speed and its passing is very good," was Martin's comment. Then he said that while last week was busy on the boys they would work much harder starting today.

While Martin was impressed with Mississippi, which, like Texas Christian, has a 5-1 record, he did not predict that his Frogs would take a trimming from the Rebels.

He said it would be a "great ball game" but indicated he figured TCU would come out on top.

It will be the eighth bowl appearance for Texas Christian.

NOTICE!
It is dangerous to let cough from common cold hang on. Chronic bronchitis may develop if your cough or chest cold is not treated. Start quick using CREOMULSION as directed. CREOMULSION soothes raw throat and chest membranes, loosens and helps expel germy phlegm, mildly relaxes spasmodic tension and aids nature fight the cause of irritation. No narcotics. For Children get milder, faster CREOMULSION for Children in the pink and blue package at your drug counter.

CREOMULSION
nature's cough, chest cold, acute bronchitis

WELL DRILLING
Howard C. Long
Phone 388
307 E. Commercial

Choose Colony for sparkle
MAKES A WONDERFUL TABLE FOR ANY OCCASION

2 1/2% GUARANTEED INTEREST
3-YEAR SAVINGS CERTIFICATES

The Highest Interest Rate That Any F. D. I. C. Member Can Pay!

Six Teams Are Idle Through Holidays

THE ASSOCIATED PRESS
The six HEAs in the Florida Intercollegiate Basketball League are idle in conference play until after the holidays. Florida State University holds a one-game lead.

FSU is undefeated in conference play since the league was organized last year, winning 10 straight. It got its third of this season last week with a victory over Tampa.

The Standings:

Team	Won	Lost	Pct.
FSU	3	0	1.000
Miami	3	0	1.000
Stetson	1	1	.500
Florida Southern	1	3	.333
Rollins	0	3	.000

SOCCER PLAYERS GATHER FOR FUSION

ST. PETERSBURG (AP)—Most of the nation's top soccer players will be here for the annual soccer fusion Wednesday.

The annual North-South game is to be played Dec. 20. Two exhibition games have been scheduled, one between top players attending the fusion and the University of Florida Soccer Club.

G. D. Farrell 210 E. First
Post-Office Box 10, St. Petersburg
Contracted to Operate the St. Petersburg Soccer Club

YESSIRREE!

SANTA WILL BE AT FOODMART

ON TUES. WED. and THUR.

AND HE HAS ASKED US TO SAVE FOR ALL THE FAMILY WITH OUR FIRST of the WEEK SPECIALS

KLEENEX 400 SIZE 2 49c

GOLDEN KEY MILK 3 TALL CANS ONLY 33c
(Limit 6, Please)

NIBLETS CORN 2 1/2 CANS ONLY 35c

GIANT SURF 59c FLOUR 45c
(Limit 1 With Order)

5 LBS. FELLEURTY 45c

DON'T FORGET SANTA TUESDAY WEDNESDAY THURSDAY

GET READY FOR A *Festive* CHRISTMAS.

LOVETT'S

SOCK UP FOR THE LONG WEEK-END,
ALL STORES WILL BE CLOSED MON., DEC 26

QUANTITY RIGHTS RESERVED

PRICES GOOD THRU SAT., DEC. 24

STOCKY'S FINEST

Bartlett Pears No 303 **23¢**

Pumpkin 2 No 2 1/2 **33¢**

Cranberry Sauce 2 16-oz **29¢**

TEA BAGS 40-ct Pkg. **49¢**
SUN MAID RAINTS 2 14-oz Pkg. **38¢**
CORRANTS 2 14-oz Pkg. **38¢**
FLOUR 5-lb. bag **38¢** 10-lb. bag **75¢**

MAXWELL HOUSE INSTANT COFFEE 6-oz Jar **\$1.29**
NBC RITE CRACKERS 1-Lb. Pkg. **38¢**
SUNSHINE BANQUET CRACKERS 1-Lb. Pkg. **38¢**

DETERGENT

Giant Surf Pkg **59¢**

Mince Meat 9-oz **23¢**

Instant Coffee 6-oz Jar **99¢**

OCEAN SPRAY CR'BERRY SAUCE 2 14-oz **37¢**



Flavor Filled Astor Vac Pak

COFFEE

1-LB CAN

69¢

Pure All Vegetable

CRISCO

3-LB CAN

69¢

Hershey's Granulated

SUGAR

5-LB BAG

39¢

SWIFT'S PREMIUM GR. "A" DR. & DR., QUICK FROZEN

TURKEYS

TOMES 12-14 & 16-20 20 Lbs. & Up	HENS 8-10 10-12 12-14 14-16 Lbs. Avg.	SMALL BELLYWELLS 8-9 & 7-9 LBS. AVG.
Lb 45¢	Lb 55¢	Lb 55¢

Mt. Vermont Gr. "A" Dr. & Dr Quick Froz. **YNG. DUCKLINGS** Lb **55¢** Gr. "A" Dr & Dr Quick-Froz. Large (4-6 Lbs.) **BAKING HENS** Lb **49¢**
Gr. "A" Dr & Dr Quick-Frozen (4-4 Lb Avg.) **STEWING HENS** Lb **39¢** Gr. "A" Dr & Dr Quick-Frozen (5-7 Lbs Avg.) **YOUNG CAPONS** Lb **69¢**

SUNNYLAND READY-TO-EAT Ham or Whole 8-12 Lbs. Avg. **Smoked Hams** Lb **49¢**

KAY-NITE FRESH GROUND HAMBURGER 4-lb Pkg **\$1.00** **"KAY-NITE" PLATE STEW BEEF** Lb **23¢**



SUNNYLAND PURE PORK SAUSAGE 1-Lb Bag **29¢**
HONOLULU SWEET SLICED BACON Lb **39¢**
CORN-FED FRESH SMALL PORK HAMS Lb **45¢**
KIM'S CANNED COOKED HAMS 4 1/2-Lb Tin **\$3.49**
KIM'S CANNED COOKED PICNICS 4-Lb Tin **\$1.99**
MILD CHEESE 8-oz Wedge **35¢**

SWEET JUICY FLORIDA

Grapefruit

8 Lb Bag **25¢**

BRAZIL NUTS Lb **55¢**

POTATOES U. S. NO. 1 Size "A" WHITE 10-lbs. 29¢	APPLES 2 Lbs. FANCY RED DELICIOUS 35¢
CELERY 2 Bunches LGE FASCAL 15¢	POTATOES FANCY GOLDEN SWIFT 5-lbs. 29¢
CRANBERRIES 10-lb Pkg. CAFE OOD FRESH 23¢	ONIONS 3 Lbs. U. S. NO. 1 MED. YELLOW 21¢

MIXED NUTS Lb **55¢**

CHRISTMAS CANDY
FILL THE KIDDIES' STOCKINGS FROM LOVETT'S
LARGE SELECTION OF QUALITY CANDIES AT
BIG SAVINGS!

— FROZEN FOODS —

Pumpkin Pies Each **49¢**

Mince Mt. Pies 2 For **59¢**

STRAWBERRIES 5 **99¢**

BUTTER Lb Qtrs **59¢**

CHEEZ-WHIZ 1-Lb Jar **53¢**

C'MON ROLLS 2 Cans **45¢**

REDDI-WHIP 1-Lb Jar **52¢**

TEA BAGS 40-ct Pkg. **67¢**

STARCH 2 16-oz Pkg. 27¢	Egg Noodles 4-oz Pkg. 12¢
Pie Crust Mix 6-oz Pkg. 18¢	Jewel Oil 1/2 Gallon 29¢ 1 Gallon 55¢
MACARONI 4-oz Pkg. 21¢	JEWEL 3 1/2-lb. 89¢

Social Events

Local BPW, Along With National One Asks For Safety

"Make this a safe and sane holiday season by following these rules," suggests Miss Marguerite Rawalt, of Washington, D. C., national president, National Federation of Business and Professional Women's Clubs, oldest and largest national organization in American of business and professional women.

(1) Driving or walking, pay close attention to traffic safety rules.

(2) Hold on to that trim figure by keeping holiday feasting with reasonable bounds.

(3) Remember that too many late hours cut "on the job" efficiency.

(4) At traditional office and New Year's parties, remember that a cup of coffee may help give lives as well as make friends.

(5) Do not permit holiday gaiety to obscure the essential meaning of Christmas.

"It is a matter of distress that December twenty-fourth has set an alltime record for fatal automobile accidents," says Miss Rawalt. "The National Federation of Business and Professional Women's Clubs, which has made health and safety a major field of activity for the past ten years, is dedicated to helping reduce this horrifying statistic."

Founded in 1919, the National Federation has 165,000 members in 48 states, the District of Columbia, Alaska, and Hawaii, representing more than 700 different jobs and professions. The Sanford Club joins in to ask for an accident-free holiday.

Spotlight On Hollywood

HOLLYWOOD (U. S. — Leo Durocher baseball training camp is busy with his new job on TV. Instead of outshouting umpires, he is outshouting actors.

The highly vocal on-air of the New York Giants now occupies an hour in the rarified reaches of NBC's stadium. He's just as talkative as ever, though in somewhat better terms than he used on the baseball field. But not always.

What are his duties? That's what many people wondered, when he left baseball for the big screen. At a reported \$50,000 a year, he's not quite sure what he's supposed to do," he replied. "The only way I can define the job is the way (NBC biggie) Bob Sarrett put it: I'm an NBC executive."

His functions can include keeping the stars happy. For instance, one of the network's big names asked for a TV set for his new apartment. He was sent one—"the kind that a shop might lend you when you had your suit out to be repaired," Durocher reported.

The star was incensed. Durocher sent as peace emissary. When he arrived, the star launched into a tirade. Durocher matched him blow for blow.

"Look—if you want to shoot, I can shoot with you; I'm an expert on it," said the former big league. "But if you want to talk this thing over calmly, I'll do that too."

The star aired his beef, and Durocher said he'd fix it. He arranged the gift of a new 21-inch set—after going through company channels, of course.

Aside from memo writing and keeping the actors happy, Durocher has numerous other chores. Not the least is as a performer. Last week he appeared on the Ethel Merman show. Yesterday he played a baseball uniform—the Cincinnati Reds, no less—to play a comedy called "O'Toole from Moscow" on matinee. He has been announced as emcee for the new comedy show.

Does he like performing? "As long as they don't want me to be an actor," he said. "If they give me something in which I can be like Durocher and talk like Durocher, I don't mind it."

He seems to be thriving in his new post and says rumors that he will return to baseball are as much nonsense.

It is thought to be a long shot that he will return to baseball. He has been in the game for 15 years, and has won 100 games. He has also been in the game for 15 years, and has won 100 games.

SPECIAL BUY
THE GARDEN
AT
SWINNEY'S

Personals

Mr. and Mrs. E. E. Ratliff and daughter Rosalind left yesterday for Atlanta, Ga., where they will spend this week and return home for Christmas.

Earl Ratliff, a student at the University of Florida in Gainesville, has arrived home for the holiday season.

Mr. and Mrs. James M. Shivers of Lake Worth are visiting friends in Lake Monroe. Mr. Shivers was born and raised in Monroe and graduated from Seminole High. The couple was married Dec. 7 in Lake Worth.

Mr. and Mrs. Chris S. Thompson formerly of Lake Monroe and Washington, D. C. are moving back to Monroe to make their home.

Friends of Barbara Griffin an eighth grade student in Lake Monroe school, will be sorry to learn that she is confined to the Orlando Hospital.

Mr. and Mrs. James Lee and family have returned from Bay Pines.

Monthly Missionary Meeting Is Held By Ladies In Chapel

The ladies of the Baptist Chapel at Elder Springs met at the chapel last week for their monthly Missionary Circles meeting.

The meeting was called to order by Mrs. W. O. Nolan and an interesting devotional was offered by Mrs. E. A. Steinhilber Sr. Her scripture was taken from John 17:1-5.

Plans were made by the circle to arrange and take baskets of fruit to several shut-ins. Several blind people will be remembered by them too.

Mrs. O. P. Wade gave an inspiring talk on stewardship and a

Spanish War Vets, Womens Auxiliary Gather In Home

Members and guests of the Colonel Theodore Roosevelt Auxiliary Three, United Spanish War Veterans and Camp 13 enjoyed the annual Christmas dinner recently at the home of the auxiliary secretary, Mrs. Mae Shearer at 113 Elm Ave.

Following the dinner a Christmas program was presented and gifts were exchanged. Mrs. Shearer's home was decorated with lights and yuletide decorations including a Christmas tree.

A short business meeting of both camp and auxiliary followed. Donations to ward gifts for veterans were made for Christmas cheer.

Closing of nominations and election of officers for 1956 was conducted. They are, president, Mrs. Frank Evans, re-elected; senior vice president, Mrs. Lou Brademeyer; junior vice president, Mrs. Lavinia Himes; chaplain, Mrs. Jennie Ericson; patriotic instructor, Mrs. W. E. Jameson; historian, Mrs. C. C. Priest; conductor, Mrs. C. P. Brasington; guard, Mrs. L. I. Pickering; and assistant guard, Mrs. Fanny Lloyd.

Installation of officers will take place at the next meeting, Jan. 8. Frank Evans was re-elected commander for 1956 of the Camp 13 United Spanish War veterans. Others elected were senior vice commander, C. C. Priest; junior vice commander, Lou Brademeyer; chaplain, C. P. Brasington; and L. I. Pickering, adjutant and quartermaster.

If shredded coconut you have stored gets a bit hard, you can soften it by heating it over hot water.

letter was read that was received by one of the members (from Miss Helen Masters, who is a missionary to Nigeria, W. Africa.

The minutes of the previous meeting were read by Mrs. C. W. Ergle. Those present for the session were Mrs. W. O. Nolan, Mrs. G. W. Miller, Mrs. E. A. Steinhilber Sr., Mrs. C. W. Ergle, Mrs. O. P. Wade and one visitor, Mrs. E. T. Thomas.



WHICH IS MORE THRILLED? Little Louise Palmer, held by Sallor John H. Fritz, is shown above opening a gift from the CPO Wives Club who presented the annual Christmas Party for needy children on the base Saturday afternoon. Santa arrived in a helicopter to the surprise and delight of the almost 100 youngsters attending. (Photo by Jameson)



BIRTHS

Mr. and Mrs. A. F. Daniel III announce the birth of a daughter, Penelope Ann Dec. 16 at the American Sumpter Hospital in Americus, Ga. Mrs. Daniel is the former Penny Wallace. The young miss weighed 7 lbs. 4 oz.

First Grader Feted

LAKE MONROE—Mrs. R. Rans surprised her young son, Ray, with a birthday party at the first grade in Lake Monroe on Monday. The youngsters sang "Happy Birthday" to the honoree while in class.

Mrs. Doughton, the teacher, helped Mrs. Rans serve the young people ice cream, cake and candy.

Feeling unconventional? Now about broiling applesauce for a change? Mix 2 tablespoons brown sugar and 1/4 teaspoon cinnamon and sprinkle over a can of applesauce dumped into a shallow metal pan; dot with butter or margarine, and broil just until top is bubbly.

Mrs. Randall Chase Speaks Of Women To Club Members

Mrs. Randall Chase, guest speaker at the annual luncheon and Christmas Program for the Sanford Woman's Club, spoke from the children's book "If Jesus Comes to My House", Wednesday at 12:30 p. m. in the club house.

The club house was beautifully and tastefully decorated with seasonal flowers and cuttings. On the mantel was a miniature reindeer and the speakers table was "lovely."

The session was called to order by the president, Mrs. Francis Meriwether. The group sang one verse of the "Star Spangled Banner" and gave the salute to the Flag.

A Christmas Carol led by Mrs. Laura Platt Brown was enjoyed by all and a delicious luncheon was served afterwards by the hostesses.

A unique and lovely Christmas program was presented the members by Miss Gene Nunnelly and her Grammar School chorus. The group rendered, among the many numbers, "Twas the Night Before Christmas". Pianist was Miss Allison Lee who displayed "unusual talent and ability."

Reports were then heard from the American Home Department by chairman Mrs. Willis Poseock. She announced that "The woman's club float won a \$40 prize in the Christmas parade."

The Civic Department donated \$10 and the American Home \$8 toward the expenses of the float.

Try this trick for your soup kettle. Put large beef knuckles (cracked) and marrow-filled beef bones in a pan with your favorite seasonings and sear quickly in a very hot (450 degrees) oven. When added to the soup, they'll give fine flavor and color.

For just the right amount of spriddle grease, spread it evenly with a crumpled paper towel or paper napkin.

God", she went on, "said Jesus and in me and you will get Joy and Peace."

Mrs. Young, chairman of the Social Department announced that the circle will meet Jan. 8 of 1957.

Mrs. Chase is talking to the members brought out the fact that wives and mothers "determine the trend of homes."

"Thoughtful women recognize the real meaning of Christmas, Love, Joy, Hope and Peace. She also said that "the greatest gift of all was the gift of Jesus Christ, a baby. Trust in

Mrs. Laura Brown led the group in singing "Silent Night". Hostesses the event were Mrs. Ben Wade, chairman, Mrs. John L. Jewell, Mrs. George Wells, Mrs. Mable Reed and Mrs. F. E. Bels.

The decorating committee, which did a "magnificent" job consisted of Mrs. George Stine, chairman; Mrs. Howard Monteth and Mrs. W. R. Jennings.

SHOES

FOR MEN

- NUNN-BUSH
- FREEMAN
- BOBLES

FOR WOMEN

- NATURALIZER
- PARADISE
- AMERICAN GIRL

• Dandel Green House Slipper

IVEY'S

"Where quality is higher than price"

GIFTS to WEAR

ROBES

Just what he wants for Christmas, a gift he can enjoy all year long. We have a nice selection of men's robes, cotton and rayon. Drop in and let us show you a few... a robe to fit every man's need.

7.95 - 9.95

HATS

Variety of colors and styles

STETSON 10.00
 BROCK 7.50

SOCKS

By HOLEPROOF, argyle and stretchable. A color to finish every outfit and a size to fit every foot... whether you prefer plain, loud or pastel colors we have just what you want. What could be nicer than 3 or 4 pairs of Holeproof socks.

1.00

TIES

By Wambley, string tie, saddle tie, tailored or the very latest... narrow ties that so many men love to wear. Stripes, plain, checks and oh so many more we can't begin to name them all.

1.00 to 1.50

SWEATERS

Make this Christmas a warm one... with a WIL-GRUME sweater. 100% wool, cotton, v-neck, button down the front, high and turtle necks, vest sweaters and in the bright and pastel colors.

2.95 - 7.95

SHIRTS

Wool and sport shirts, colors of blue, blue, yellow, white, green in stripes, plaids, checks, and checks.

2.95 - 4.95
 2.95

SLACKS

By Carter and Hightower, gabardine, wool flannel, and on all wool good color-ties of materials.

1.95 - 3.95

R. E. PURCELL CO.

Tomateset

The winning combination. Full length Tomaterobe in woven plaid gingham, topped slack-tailored broadcloth pajamas in matching solid colors.

91095

The 3-Piece Set

ROBES

Quilted cotton, fitted or duster styles. Also nylon, crepe and corduroy. For lounging or for general usage. Warm and washable.

\$2.95 - \$22.95

PENNEY'S

Holiday fashion doesn't cost a fortune at Penney's!

Framing the half size in flattery... Penney's glamorous new prints!

5 90

Penney's

Additional Society

Baptist Circle Meetings

The WMS of the First Baptist Church met recently for circle meetings. A covered dish luncheon was served at noon after which the program was presented in the church auditorium, Circle No. Three in charge.

Mrs. Volie Williams introduced the guest speaker, Judge Ernest H. Housholder. His topic was Juvenile Delinquents. Those taking part were Mrs. B. F. McWhorter, Mrs. J. D. Cordell, Mrs. W. D. Gardner, Mrs. Volie Williams. The meeting closed with prayer.

CIRCLE NO. ONE
Circle One met with Mrs. Leland Rudd presiding in the absence of the chairman, Mrs. W. A. Kratzert. The meeting was opened by a prayer and devotional, "How To Pray," by Mrs. Rudd.

Reports were heard from various committees, and coupons collected for the children's home after which Mrs. W. H. Murray gave the stewardship lesson on "Our Possessions and the Home".

Those present were Mrs. Leland Rudd, Mrs. W. H. Murray, Mrs. O. C. Gibbs, Mrs. H. H. Newman, Mrs. W. P. Yealey, Mrs. J. E. Rider and Mrs. J. Roy Britt.

CIRCLE NO. TWO
The gathering of Circle Two was held in the Woman's Bible Class room with the meeting called to order by the chairman, Mrs. E. C. Moore.

Mrs. John D. Abrahams presented by Mrs. A. J. Peterson, gave a beautiful devotion on "The Star". Routine business was attended to as committee chairmen reported and made plans.

Plans were made to visit shut-ins, hospitals, and nursing homes, taking Christmas cheer. Mrs. Myers, stewardship chairman, gave an interesting chapter from the stewardship study book.

It was decided to give the Juvenile Judge a Bible to give a delinquent child. An interesting letter was read from Mrs. Mary Catherine Bratters, the missionary to Nigeria. Plans were made to send her family a gift box in January. Mrs. Selman dismissed the circle at noon with prayer and blessings upon the lunch and fellowship period at noon.

Those present were Mrs. E. C. Moore, Mrs. Homer Osborne, Mrs. C. L. Park, Mrs. E. L. Dana, Mrs. Fred Myers, Mrs. S. J. Davis, Mrs. C. L. Hewson.

Mrs. J. T. Newby, Mrs. George McMill, Mrs. Grace Bishop, Mrs. Selman, Mrs. G. Selman, Mrs. A. J. Peterson, and a new member, Mrs. E. L. Lindquist.

CIRCLE NO. THREE
Circle Three met with Mrs. B. F. McWhorter presiding. Mrs. Gardner gave the devotional, "How To Pray," using as her scripture, Luke 11:1-4. Mrs. Williams asked all members to stay and hear Judge Housholder speak on Juvenile Delinquents.

Mrs. Cordell gave the stewardship. "Our Possessions in the Home" and "Our Possessions and Our Personality." Mrs. McWhorter informed the circle that Mr. and Mrs. Maurice Brantley are the missionaries for the year.

Mrs. Rossetter closed with prayer. A new member was welcomed into the circle, Mrs. M. C. Hoffman.

Lake Monroe Home Demo Members Exchange Gifts

LAKE MONROE—The Lake Monroe Home Demonstration Club met in the Lake Monroe School cafeteria Friday night.

President, Mrs. Clover Marrs, called the session to order and Mrs. Dora Mae Harrell led the devotional. Hostesses, Mrs. Arthur Harris, Mrs. R. E. Hamilton decorated the room with a Christmas theme and poinsettias and a brightly colored tree, which stood in the front.

Members sang Christmas Carols and exchanged gifts. Refreshments were then served. Mrs. C. E. Hittell won the prize for the game of the evening.

Those present for the sale affair were Mrs. C. E. Hittell, Mrs. R. E. Hamilton, Mrs. Vivier Marrs, Mrs. Pauline Hobby, Mrs. Dora Mae Harrell, Mrs. J. C. Sapps, Mrs. Hazel Gardner, Mrs. J. H. Tendall, Mrs. J. E. Andrews, Mrs. C. J. Jackson, Mrs. Offie Canup, Miss Myrtle Wilson, Mrs. Anna McArthur and Mrs. J. H. Griffin and guest.

Quick way to cut square biscuits is to use the ice cube divider from your refrigerator tray.

A gift to Mrs. R. L. Glenn who is very ill was passed.

Mrs. Myron Smith closed the session with a prayer after which the members adjourned to the assembly room of the educational building where a covered dish luncheon was enjoyed. At 1 p. m. the circle met in the church auditorium for their monthly program.

Members present were Mrs. H. B. Carter, Mrs. J. A. Strange, Mrs. John E. Fox, Mrs. George W. Elliot, Mrs. Turner Lodge, Mrs. W. P. Brooks, Mrs. H. J. Finch and Mrs. H. E. Turner.

Vocational School Students, Teachers Have Yule Affair

The classrooms of the Seminole County Vocational School on Commercial Avenue were the scene of the day pupils annual Christmas Party on Friday morning.

This was a gala affair and the traditional Christmas color motif of red and green was carried out in detail. The table was overlaid with a pale green table cloth and centered with crystal candelabra holding red tapers. The dark green Christmas tree with silver and red decorations was placed at one end of the table. Gaily wrapped presents were piled high around the tree and exchanged at the close of the party.

The entire suite of rooms were gay and bright with color and lights and "feminine faces." A unique Christmas tree with branches made of white chenille tipped with multi-colored sequins, was set off by lighter red candles. The mistletoe was ineffective.

Refreshments of fruit cake, coffee and nuts were served by girls wearing red and green dresses. The day students presented the school with an electric hot plate at this party. Flash pictures were taken of the group, as a high-light of the occasion.

Mrs. R. C. Maxwell pronounced the invocation, followed by the singing of Christmas carols. Among the guests were Fred Murray, director of Vocational Education for Seminole County. Mrs. J. P. Hall is principal of the school with Mrs. L. M. Watt as teacher of bookkeeping and accounting. Mrs. R. C. Maxwell is supply teacher and former head of the school.

Luxury salad: a medley of crisp greens with artichoke hearts preserved in olive oil.

CALENDAR OF EVENTS

MONDAY

The Dependable Class of the First Methodist Church will meet at McKinley Hall, at 6:30 p. m. for the Annual Christmas dinner.

The TEL Class of the First Baptist Church will have a Christmas party and covered dish supper in the Educational Building at 6:30 p. m. Each member is asked to bring a gift for the exchange.

The Associational Sunday School meeting of the Central Baptist Church will be held at 8 p. m. in DeLand at the First Baptist Church.

The Pilot Club will hold its annual Christmas party at 7 p. m. in the Yacht Club. Members are asked to remember gifts for the Elks tree.

Beta Sigma Phi Sorority will meet at the home of Mrs. Warren E. Knowles at 7:30 p. m.

TUESDAY
The Sanford Tourist and Shuttle-board Club will hold a covered dish supper at 6 p. m.

The Sanford Story League will have a Christmas party at the Episcopal Parish House at 3 p. m. Members are urged to attend.

The Past Noble Grand club of the Seminola Rebekah Lodge will meet with Mrs. Brodie Williams for its annual Christmas party at 7 p. m.

The Dorcas Class of the First Baptist Church will have its monthly meeting at the home of Mrs. W. I. Crabtree. Co-hostesses will be Mrs. John L. Lee and Mrs. R. L. Westbrook. Time is 7:30 p. m.

WEDNESDAY
Prayer Meeting at the First Baptist Church at 7:30 p. m.

The Sunday School Cabinet of the First Baptist Church will meet at 8:15 p. m.

The Central Baptist Church choir rehearsal will be held.

Homemakers Class enjoys Banquet In Yacht Club

The Homemakers Sunday School Class of the Central Baptist Church held its annual Christmas banquet at the Yacht Club recently. Santa Claus made a visit and gave each child present a gift.

A delicious turkey dinner was served to the following: the Rev. J. W. Parham, Mr. and Mrs. J. B. Weaver, Mr. and Mrs. J. H. Chambers, Mr. and Mrs. Jesse Lodge and family, Mrs. Jack Owens and Bobby, Mrs. E. D. Kennedy and Cindy, Mr. and Mrs. E. O. Keith and family, Mr. and Mrs. R. K. Thompson and family, Mr. and Mrs. D. M. Hall and family, Mr. and Mrs. L. V. Duke and Larry, Mr. and Mrs. George Scott, Mr. and Mrs. Glen Price and family, Mrs. H. J. Budger and family, Mr. and Mrs. C. N. Edmunds, Mr. and Mrs. W. J. Blevins and family, Mr. and Mrs. A. T. Pospichal and family, Mr. and Mrs. De Young and family, Mr. and Mrs. W. E. Brown and family, Mrs. W. M. Pope and family, Mrs. A. N. Rabun and family, Mr. and Mrs. C. D. Hayes and family, Mr. and Mrs. Keith Shrader and family, Mrs. Darrell Grime, Mr. and Mrs. J. P. McClellan and family.

Put a layer of sauerkraut in a large skillet. Add some tomato sauce and frank furters. Heat thoroughly and serve with fluffy mashed potatoes sprinkled with minced parsley.

Mrs. B. F. Bullard and family, Mr. and Mrs. T. E. Noon, Mr. and Mrs. E. L. Lavy, Dana and Debbie Rotunda of Geneva, Mrs. Ida Lisk, Mrs. Bertha Tingle and family, Mr. and Mrs. C. O. McFall and family, P. H. McFall of Rochport, Ind., Mrs. Louise Lowe and family and Miss Connie Brown, Miss Lynda Yeackle and Miss Eva Belle Speir.

For a flavor and color variation in scrambled eggs, add a little tomato juice instead of milk or cream.

Mon. Dec. 19, 1955 Page 7
11P. SANFORD HERALD

LOSING SMARTITAN
PHOENIX, Ariz. (AP)—Walter E. Eiam stopped to help a man who had fuel line trouble on his car. While the men were laboring 1953 model he had bought only under the hood. Eiam's car, a days before, costed downhill and flipped into a canyon.
Damage was estimated at \$60.

NOTICE

Reservations for the annual Christmas Dance of the Seminole County InterFraternity Association will be taken Wednesday, December 21st
From 3 - 4 P. M. at
The Mayfair Inn
Only Members Who Have Paid Their Dues May Make Reservations.
Telephone 1200

GALA-HOUR SHOES for holiday glamour

Sandals
This is open season for slattery... and open season for the compliments you'll receive when you step out in these fashionable styles.
\$8.95 - \$11.95

Pumps
Sure steps to Holiday Gaiety, smart new fashions with poise and elegance... to accent your most exciting outfit. By Vogue and Valentine.
\$7.95 - \$11.95

Jumping Jacks
Sturdy leather shoes for growing boys and girls... soft supple, long wearing leathers... fashioned to fit and give support. By actual test Jumping Jacks was rated the nation's top shoe.
\$5.95 - \$6.95 - \$7.95

Men's Shoes
In step with winter... summer... spring... special occasions. We have Men's favorites... that are ideal for business, dressy casual styles. Stop by and see all the shoe values we have for men.
\$8.95 - \$12.95

Acrobat
Just slip these loafers on your children's feet, see our wide selection of easy fitting loafers.
\$5.98 - \$6.95

Boots
Western boots for Junior cowboys, won't he be happy Christmas to find a pair of these boots under the tree?
\$3.98 - \$9.98

SLIPPERS
Thoughtful Husband Hear my Song!

Men's Slippers
By Baron, for the man of leisure. By dad, granddad, son, or child a pair today. Slippers, A man's pleasing gift.
\$3.50 - \$4.50

Womens' Slippers
By Daniel Green & Welco, a perfect gift to give your Lady for Christmas... See our selection of slippers styled for the sleek sophisticated, the young at heart.
\$5.00 & \$6.00
Ribbons \$2.98 - \$3.50

Thoughtful Husband Hear my Song!

Now Rest You, MERRY GENTLEMAN
LET NOTHING YOU DISMAY...
MY XMAS GIFT, I JUST PICKED OUT
& PUT ON LAY-AWAY...
CHRISTMAS Problems Almost Solve Themselves When You Shop At SWEENEY'S
114 MAGNOLIA AVE. PHONE 147
A GIFT FROM SWEENEY'S IS GIFT WRAPPED IN GAY CHRISTMAS COLORS READY TO PUT UNDER THE TREE!

Christmas Store Hours
Mon. - Tues. 9 - 6
Wed. - Fri. 9 - 8
Sat. 9 - 6

Cowan's

Many Good Things Are Added Up After PGA Tournament Is Ended

Now that the Mayfair Inn \$15,000 PGA Open is over, we should look back and add up the many good things that have come to this community because of its planning.

Thousands have come to Sanford that would not otherwise have had an opportunity to see what we really have here.

Millions will read of Sanford and come to recognize the community as the golfing center of the world.

The leading golfers of the nation have played here and will carry with them good words of the friendly spirit that has been expressed by those who have had some part in making the tournament possible.

Central Florida has never seen such a display of golfing talent from every section of the country and Canada as the display that took part in the tournament last week. Six days golfers came in and stayed for the tournament and will be talking to their friends everywhere about the facilities that can hardly be matched anywhere.

We are sure that the community as a whole would like to say "thanks" to all of those who are responsible for making the Mayfair Inn Open possible. And we are equally sure that the community speaks as a whole when we say for them "come back again".

We are hopeful that Central Florida citizens will individually express their thanks to those who made the "Mayfair Inn Open" possible.

To the officials of the Professional Golfers Association, we certainly express our wish that they come back to be with us annually as the tournament is played again and again.

The week of December 12 through 18 will not be forgotten soon because of the wonderful impression the tournament has left on the citizens here, and in every community throughout Central Florida.

We have always believed that Sanford is the center of attraction in Central Florida, and the Mayfair Inn Open has convinced us that our belief has been realized.

Dream Realized

The announcement today of an accomplishment by the close cooperation of the Board of City Commissioners and the Board of County Commissioners, along with the Atlantic Coast Line Railroad, and a committee of citizens, means that recreational facilities will be put to the disposal of thousands of colored boys and girls who have had no opportunity to play together in an area provided for their use.

The Board of Education, working with the various boards and committees coordinating the efforts and bringing the loose ends together so that the project could be realized, has also done much to make the efforts worthwhile and productive.

With an area of nearly fifty acres to be developed into a recreational park, complete with baseball diamond, tennis courts, basketball court and swimming pool, thousands upon thousands will have an opportunity to play and develop.

There is no doubt in our minds that such an area, on which work will begin on the first day of the New Year, will be in constant use by children of all ages as well as their parents and older folks.

Not only will the park be of an intrinsic value to the City and to the people within it, but such a development will enhance the value of property all around it, making living within the area of real value to those whose homes are located there.

The close cooperation of the Commissioners, citizens and educators who have spent many hours to make the recreational area a reality is an example of the community realizing the need for equal facilities for all.

Our community is improving in every respect, looking out toward a brighter future for all of our citizens. Along with the economic achievements here, we are also realizing the health and welfare accomplishments for the area.

Through the coming years, such a project as the Goldsboro Recreational Area, many youngsters will be kept from the avenues of so-called juvenile delinquency and led into useful and beneficial channels.

We commend those who have brought the project to its beginning stage and who will guide it toward completion.

Your City Charter

Section 78. EQUALIZING BOARD POWER TO CHANGE VALUATION OR ASSESSMENT; NOTICE TO OWNER OF INCREASE; HOW NOTICE SERVED. The Equalizing Board shall have the power to change the valuation or assessment of any real or personal property upon the roll by increasing or decreasing the assessed value thereof as shall be reasonable or just to render taxation uniform; provided that the valuation of any real and personal property as returned by the assessor, shall not be increased without first giving the owner or his agent notice of the intention of the board to increase it. Such notice shall be by mailing said notice to the last known place of residence of said owner or agent, or by publication three times in a newspaper published in the City of Sanford, Florida, and shall state in said notice the time when the Board will be in session to set upon the proposed increase in assessed value, which notice shall be made or given not less than ten days prior to the time of such hearing.

Section 79. EQUALIZING BOARD, CHANGES TO BE NOTED ON ASSESSMENT ROLL; CORRECTED ASSESSMENT ROLL TO BE SUBMITTED WITHIN THIRTY DAYS. All changes made by the Equalizing Board shall be noted in the assessment roll by the City Assessor, and, within thirty days after the equalizing Board shall have concluded its examination and correction of the assessment roll, it shall be submitted in correct form, duly certified to by the Equalizing Board, to the City Commission, and shall stand as the assessment for the year of the taxable property within the City.

Section 80. TAXATION, RATE OF; LEVY TO BE MADE TO BE ENTERED ON ASSESSMENT ROLL; CERTIFICATE ON ASSESSMENT ROLL; CITY COMMISSIONERS CERTIFICATE ON ROLL; WARRANT TO TAX COLLECTOR. As soon as practicable after receiving the assessment roll, the City Commission shall determine the amount and fix the rate of taxation and make the annual tax levy for the current year. It shall be the duty of the Assessor, as soon as the City Commission has determined the rate of taxation and made the annual tax levy for the current year, to calculate and carry out the total amount of city tax, setting opposite the aggregate sum set down on the valuation of real and personal property, the respective sums assessed as taxes thereon in dollars and cents. And the Assessor shall annex to the assessment roll as thus completed a certificate substantially in the following form:

I, _____ City Tax Assessor of the City of Sanford, do hereby certify that the foregoing is the assessment roll of the taxable property in the City of Sanford, valued at its full cash value, and that it contains a true statement and description of all personal and real property in the said City of Sanford, subject to taxation by said City and liable to be assessed therefor; that the listing and valuation are as corrected by the Equalizing Board and as approved and adopted by the City Commission, and that all requirements of law and ordinance regulating the making of the assessment roll for the City of Sanford have been complied with.

HAL BOYLE

Anybody Want To Be Movie Star?

NEW YORK (AP)—Anybody want to be a movie star? Well, now is the time to try. "Fresh talent has more opportunity now than at any time I can remember," remarked film producer Hal B. Wallis.

"As more and more stars form their own companies and appear in fewer films, the supply of veteran players has diminished. The

discovery of new talent has become a problem of real importance to the motion picture industry."

This statement by Wallis, however, is no invitation to every good looking stage-struck girl in Corn-cob Corners, Neb., to fly out to Hollywood and beat on his office door.

"The idea still exists that all one needs to get ahead in pictures is a pretty face or a good shape," he said. "If that was ever true once, it isn't true now. "You have to have real acting talent—a spark of personality that the camera can catch. Anyone who really wants to get ahead in the movies should first try to get as much experience as possible in little theater work or playing summer stock."

The Cinderella legend persists. It is said that many of the top film actresses got their start as elevator operators or soda fountain waitresses. Perhaps so. But I never have found any real talent while riding elevators or sitting at a drug fountain."

Wallis has a reputation in the industry as a star maker, and the record shows he has been one of its most astute judges of new talent. Among stars he introduced to the screen are Shirley Booth, Burt Lancaster, Dean Martin and Jerry Lewis, Elizabeth Scott, Kirk Douglas, Wendell Corey, Corinne Calvet and Charlton Heston.

"I'm constantly looking for new talent," he said, "but I don't find it standing on street corners or by reading the mail. "It's a real search. We find potential new stars by going to the theater, by watching television, by interviewing young bit players. "Sometimes, but very rarely, I sign up a new actor without even having him make a screen test. I saw Burt Lancaster in only one act of a Broadway play and signed him up the next day."

Lancaster is costarred with Italian actress Anna Magnani in the

Bald and golden eagles are about the same size and except for the California Condor are the largest birds of prey in North America. Michigan produces nearly half the timber marketed in the Great Lakes states.

Our Lions Little League Baseball completed its sixth season with 145 boys participating. These machines helped furnish bats, balls, T-shirts, and necessary equipment.

With the juvenile delinquency rate on the increase, we believe giving activities that so many of our children can participate in, is building our greatest asset, our future citizenship.

The Sanford Lions Club realizes that without this cooperation from you, this program would not have been possible. We wish again to thank you for your assistance. May we suggest that you keep your machine in prominent places and call attention to what they stand for.

Gratefully yours,
THE SANFORD LIONS CLUB
C. C. WELSH
Chairman of Gum Committee
BEN F. WADE
President.

producer's latest film, "The Rose Tattoo," based on the controversial play by Tennessee Williams. The Johnston office at first vetoed the project, but finally approved it after Wallis agreed to make the love scenes a bit less earthy.

Although Wallis is somewhat cynical toward the Cinderella legend, his own career has exemplified the familiar Horatio Alger pattern.

He quit school at 14 and got a job as an office boy to help support his mother and two sisters. He then worked as a traveling salesman selling electrical supplies and moved his mother from Chicago to Southern California in 1921 in hopes the milder climate would improve her health.

After managing a theater and serving as a movie press agent for 6 years, he hit the jackpot with his first picture, "Little Caesar," in 1929.

Now 57, Wallis has turned out between 350 and 400 full length films, a record matched by few men in the industry. Fifteen of the films produced under his supervision have won a total of 28 motion picture Academy awards. Now he produces only two to a year.

"It's more fun to do fewer," he observed. "You can enjoy making them more when you can make each one a hand-tooled job."

Anybody who seriously wants to be a movie star can do Wallis a big favor.

"Don't just sit down and write me a letter about it," he said. "First, be sure you have some real ability—then go out and get some real experience."

Then you won't have to look up Wallis. He says he'll be looking for you.

The Sanford Herald
Published Daily Except Saturday and Sunday
Second in Second Class Matter October 27, 1912
Post Office of Sanford, Florida, under No. 42
of Post Office of March 8, 1919
ESTABLISHED 1888
ARTHUR HARRIS, Sr., Executive Editor

SUBSCRIPTION RATES
By Carrier: 10c per week. One Month \$2.50
By Mail: 10c per week. One Month \$2.50
All ordinary notices, orders of checks, remittances and orders for advertising space, should be sent to the office. All notices will be charged for as regular advertising rates.

Advertising: Sanford by Sanford Advertising Service, Inc., 26 George Street, Sanford, Fla. 32757.

The Herald is a member of the Associated Press which is published exclusively for the use of its subscribers on all the local news printed in this newspaper.

Page 4 Monday, December 18, 1956

TODAY'S BIBLE VERSE
Saying, What shall we do to these men? for that indeed a notable miracle hath been done by them in Jerusalem; and we cannot deny it. —Acts 4:16.

YOU'RE TELLING ME!

By WILLIAM BRY
General Press Writer

AFTER an eight-year study of the flying saucer situation, the Air Force announces there just ain't any. This settles the matter definitely, or, at least, until somebody else reports having seen another one.

Editor of a Louisiana prison newspaper complains convicts are stealing from each other. Just proof again—there's no honor among thieves.

While shooting a comic opera, Mexico's star film comedian Centeno, was bitten by a dog. Took off the fun out of it.

The U. S. S. Glacier, an icebreaker, sails for the Antarctic to lead the upcoming Operation Deepfreeze—leave soon. Which reminds me—has anyone checked the furnace lately?

National Apple Week is here again. Now there's an observance we can get our teeth into.

Paris fashionists are a New Yorker for completely ruining clothes of their own stuff prematurely. They must have her's too quick on the draw.

Mohammed Mammadoff, Iran's premier during a three-year absence, is studying medicine. They did hope probably hoped to cure his country's ills—when he gets out.

Plan A Good Breakfast

By WALTER H. BRONSON, M.D.

DOES your home have a vice president in charge of breakfast? If it doesn't, it would be a good idea to appoint one.

Monday is probably the logical candidate for the post. He generally governs the morning meal, and the entire family and probably knows more about nutrition and daily requirements than the rest of you.

Breakfast Menu
Breakfast eaters when no one else has the responsibility of preparing it each day. That is an important meal and should not be hurried or by-passed entirely. In fact, you should get from one-fourth to one-third of your daily requirements at the breakfast table.

Just doughnuts and coffee won't do the job. They will not provide the gradually to progressive at the Dwight Morrow High School at Englewood, New Jersey.

Followed Doughnuts
The file on only powdered doughnuts and coffee for five weeks—and did a third not arrive on a diet of wheat, dry milk and cream? You can't get the same breakfast day in and day out. Winter breakfasts of cereals are different from those eaten during the warm months.

and you can't serve each member of the family the same breakfast. Their requirements will differ, of course, with their age. Two-year-olds, for example, generally need between 55 to 60 per cent more B vitamins, protein and minerals than their parents do. Their larger appetites naturally require more food.

There is a breakfast menu for a family of four. While it should not be used as a daily menu, it does show the proportion of food needed by each member.

Required Portions
Father should eat half a grapefruit, an egg, two slices of bacon, one slice of buttered toast with jam.
Mother should eat the same, substituting one slice of bacon.
The two-year-old needs much more. He should eat the same as Father plus two additional slices of bacon or substitute one of second piece of toast and a glass of milk.
Daughter's menu should be the same as Father's with the addition of a glass of milk.

Comments and Advice
Mrs. G. E. W. Study informs us as to the symptoms of gall-bladder trouble and the diet one should follow.
Answer: A disturbance of the gallbladder usually produces headache, nausea and pain in the gallbladder region, which often radiates into the shoulder.
Persons suffering from this condition should avoid eating fatty foods or drinking greasy liquids. Their physicians will advise of their management as to the proper management of this trouble.

© 1956 The Food and Nutrition Board, Inc.

Treat yourself to a carefree Christmas '56

Have More fun Shopping And Giving. Join Our Christmas Club Now!

Pay Weekly	Collect in '56
25	12.00
50	25.00
1.00	50.00
2.00	100.00
5.00	250.00

EVERYBODY'S HAPPY

BUBBA
— a jet plane, an electric train — or a pony, maybe.

MOM
— an emergency — or that electric dishwasher.

DAD
— those great dividends — and for a long time.

When They're **SAVING at FIRST FEDERAL**

★ Good earnings
★ Quickly available
★ Truly safe

MIMEOGRAPH PRINTING — TYPING
CREDIT INVESTIGATIONS MADE ANYWHERE IN UNITED STATES OR FOREIGN COUNTRIES
CREDIT BUREAU OF SANFORD
222.22.22.22 222 and 2221
Phone 422 Sanford, Florida, Sanford Bank Building

Life Insurance
AGENCY

FLORIDA

First Federal Savings & Loan



Help Fight TB Buy Christmas Seals

Help Fight TB Buy Christmas Seals

1955 CHRISTMAS GREETINGS 1955

Ground Broken

(Continued From Page One)

project Jan. 1, Krider and Dyan said Friday morning when brief ceremonies were held and the first spadeful of dirt turned over to officially get the project underway.

A committee of seven colored citizens, working in conjunction with the City and County committees, were on hand Friday morning for the ground-breaking ceremonies. Herbert Cherry, speaking for the committee, said, "We want to especially thank the City and the County for their untiring efforts in making the project a reality. Working on the project for more than a year, this is the realization of a dream and we are sure that the entire community appreciates what has been done for us."

Other members of the committee are Dr. F. A. Smith, Mrs. Thelma Nathan, D. C. Caldwell, Matthew Williams, Willie Miller, James Hagen, and Leroy McClelland.

Commissioners Krider and Dyan said that plans would be started immediately for a swimming pool for the area which they expect to have completed by the first of the coming summer season.

Other areas in the recreational project will be set aside for softball, basketball, tennis courts, and a parking lot.

Commissioner Dyan, commenting on the project said Friday morning, "this is one of the most forward steps we have ever taken and is a great accomplishment for our community."

Commissioner Krider said, "Through the untiring efforts of many citizens we have been able to make this project come into being. The cooperation of the County Commissioners, the School Board, the Atlantic Coast Line Railroad, and the colored citizens of the community has been remarkable."

Superintendent Milwa said, "The School Board is happy that the project is being realized since its adjoining Goldsboro Elementary School where up to 1,200 colored children will have an opportunity to use the facilities as well as children from all over the county."

Krider said that the first work to be undertaken in putting the area in shape for the recreational facilities will be the lowering of a 10-inch water main extending from Lake Jennie Jewell to the Atlantic Coast Line Railroad facilities. The pipe will be set some inches underground.

The project, which has been under consideration for at least 12 months, will be completed for use in the summer of 1956.

Final Golf Score

- (Continued From Page One)
- Mich., 70-70-72-69 281;
 - Stan Mosel, Maplewood, N. J., 69-71-72-69 281;
 - Gene Bone, Orchard Lake, Mich., 70-73-70-72 285;
 - Mike Fetchick, Mahopac, N. Y., 69-72-71-69 281;
 - Bob Watson, Ardley On Hudson, N. Y., 69-71-72-67 279;
 - Henry Williams, Jr., Reading, Pa., withdrew;
 - Roger Fedigo, Inwood, N. Y., 73-71-68-75 287;
 - Gen. Bigham, Kansas City, Mo., 69-73-70-68 280;
 - Dave Douglas, Newark, Del., withdrew;
 - Larry Tomasi, Detroit, Mich., 70-70-71-75 286;
 - *Donald Binsplinghoff, Miami, Fla., 69-73-70-68 280;
 - Ted Kroll, Bethesda, Md., withdrew;
 - Tom Talkington, Ypsilanti, Mich., 71-72-67-70 280;
 - Mickey Homa, Rye, N. Y., 69-74-68-70 281;
 - Doug Higgins, Midland, Tex., 73-68-70-70 281;
 - Jim Ferree, Winston Salem, N. C., 67-68-74-71 280;
 - Rud Holscher, Apple Valley, Cal., 69-74-67-69 279;
 - Jack Hay, Montreal, Can., 71-70-70-73 286;
 - Frank Stranahan, Toledo, Ohio, 70-70-69-70 279;
 - Bob Crow, Hopkins, Mich., withdrew;
 - Bob Inman, Detroit, Mich., 68-69-72-72 271;
 - Max Evans, Utica, Mich., 69-71-69-69 278;
 - Walter Burkemo, Detroit, Mich., 71-68-70-71 280;
 - Ed Furgol, St. Louis, Mo., 71-66-72-68 277;
 - Doug Ford, Klamath Lake, N. Y., 69-74-67-69 278;
 - Pete Cooper, Detroit, Mich., 67-69-71-71 278;
 - Jly Hebert, Woodmere, N. Y., 70-68-70-69 277;
 - Paul McGuire, Wichita, Kan., 68-68-69-70 270;
 - Toby Lyons, St. Petersburg, Fla., 69-70-69-71 278;
 - E. J. "Dutch" Harrison, St. Louis, Mo., 68-70-70-68 276;
 - Billy Maxwell, Odessa, Tex., 66-69-68-70 275;
 - Gardner Dickinson, Jr., Panama City, Fla., 67-72-67-69 275;
 - Chick Harbert, Northville, Mich., 71-67-68-68 272;
 - Dick Mayer, St. Petersburg, Fla., 68-69-68-70 281;
 - Walker Inman, Jr., Augusta, Ga., 69-66-70-69 274;
 - Tommy Bolt, Chattanooga, Tenn., 68-71-67-66 272;
 - Mike Souchak, Grossinger's, N. Y., 67-69-68-66 270;
 - Marty Furgol, Lemont, Ill., 67-68-69-71 275;
 - Bo Wainiger, Oklahoma City, Okla., 68-69-68-69 274;
 - Skip Alexander, St. Petersburg, Fla., 69-68-67-76 280;

Christmas

(Continued from Page One)

airplane and the fission of the atom, the former millennium was stupendous. God's truth is eternally fresh and living. Man's works age and pass away.

"It is striking that there is a gap between these two millennia. It is a period of 400 years in which there was no revelation of the spirit. Had the spring of Divine Communication to man run dry? Had man failed to open his mind and heart? Apparently so, or, rather, the curtain was run down to prepare the great stage of events. Malachi may be thought of as summoning the great prophets to look ahead with their spiritual telescopes in focus on the greatest of all prophecies -- the Kingdom of God as revealed in Jesus. This revelation (Malachi 4:6) "would turn the heart of the fathers to the children and the heart of the children to the fathers" -- A new phenomenon, a revolutionary spiritual awakening of the spirit of man -- the Kingdom of God, which came with the life and teaching of Jesus," he concluded.

The Morning Devotions at 8:30 to 8:45 a. m. this week are conducted by the Rev. Root under the auspices of the Seminole County Ministerial Association.

Ohio State's All-America back Howard Cassidy averaged six yards per carry in Big Ten competition during the 1955 season.

*Doug Sanders, Miami Beach, Fla., 69-67-68-70 274;

Shelley Mayfield, Westbury, N. Y., 69-70-66-68 273;

Al Balding, Toronto, Can., 69-68-68-68 269;

Dow Finsterwald, Bedford Heights, Ohio, 68-70-67-71 274;

Sam Sneed, White Sulphur Springs, W. Va., 64-70-69-72 275;

Ed Oliver, Lemont, Ill., 71-66-64-69 270;

Don Fairfield, Casey, Ill., 69-70-63-71 273;

Leo Biagetti, Willoughby, Ohio, 68-67-67-72 275;

Asterisks denote amateurs playing in the tournament.

THE SANFORD HERATY

Mon. Dec. 19, 1955 Page 5

Balding

(Continued from Page One)

Slammin' Sammy Sneed through-out the tournament, but he failed to materialize into his usual "under pressure" play for top spot honors.

Sneed, who ran into trouble both Saturday and Sunday, yesterday had his worst moment on the fourth hole when he drove into the rough and in swinging on the play hooked his club into hanging moss under trees and dribbled his shot onto the course when he topped the ball. He finished yesterday with a 72 for the par 70 18 holes. Coupled with his 64 for Thursday, 70 Friday and 69 on Saturday, his tournament total was 275.

In ceremonies at the conclusion of yesterday's tournament, Mayfair Inn Manager Mehane, with owner Horace Stoneham, New York Giant's Manager Bill Rigney, Farm System Director Carl Hubbell, Mayfair Inn Pro Leo Armstrong, Amateur winner Doug Sanders, and Pros Oliver and Jay Hebert, in the background, presented the winning trophies and checks.

Manager Mehane thanked the entire group of Sanford citizens who helped make the tournament a success. He said, "Without the cooperation of these fine people we could not have accomplished all that we did here." Following the ceremonies Mehane said, "I want to especially thank the ladies of the Sanford Women's Golf Association for the exceptionally fine cooperation here at the tournament. They were simply wonderful and without their help we would have been at a loss."

Ohio State's All-America back Howard Cassidy averaged six yards per carry in Big Ten competition during the 1955 season.

BUYING A CAR?

Use The Low Cost Sanford Atlantic Finance Plan

The SANFORD ATLANTIC NATIONAL BANK

Installment Loan Dept. MEMBER FDIC

HENRY QUITS HOCKEY

HERSHEY, Pa. (AP)—Gordon (Red) Henry who starred for 11 seasons Hershey goals in the American Hockey League has retired from the pro ranks and is playing for the Owen Sound Mercury in the Senior Ottawa Hockey Assn.

ICE SHOW SET

NEW YORK (AP)—The Hollywood Ice Revue will run 18 nights and six matinees by Madison Square Garden from Jan. 12 through Jan. 28.

Come in and win in Frigidaires \$100,000 Free-For-All Contest

SEE FRIGIDAIRE for '56

WE CARRY A FULL LINE OF Sunbeam THE BEST ELECTRIC APPLIANCES MADE

SHERWIN-WILLIAMS PAINTS

TED WILLIAMS LUMBER CO.

305 EAST 25th ST. PHONE 1815

Model B-70-50 2-Oven Electric Range with "THINKING TOP!"

Model B-10-50 NEW GOLD-PARTY in 14.8 cu. ft. size in Color of Colors!

Model B-10-50 NEW "SPECIAL 20" ELECTRIC RANGE WITH FRENCH DOORS --and new, automatic Roll-to-You Shelf.

Model B-10-50 NEW AUTOMATIC WARMER and COFFEE

Model B-10-50 NEW AUTOMATIC WARMER and COFFEE It's the famous Imperial Peninsula Pot that heats and warms.

Model B-70-50 2-Oven Electric Range with "THINKING TOP!"

Model B-10-50 NEW "SPECIAL 20" ELECTRIC RANGE WITH FRENCH DOORS --and new, automatic Roll-to-You Shelf.

Model B-10-50 NEW AUTOMATIC WARMER and COFFEE

Model B-10-50 NEW AUTOMATIC WARMER and COFFEE It's the famous Imperial Peninsula Pot that heats and warms.

Model B-70-50 2-Oven Electric Range with "THINKING TOP!"

Model B-10-50 NEW "SPECIAL 20" ELECTRIC RANGE WITH FRENCH DOORS --and new, automatic Roll-to-You Shelf.

Model B-10-50 NEW AUTOMATIC WARMER and COFFEE

Model B-10-50 NEW AUTOMATIC WARMER and COFFEE It's the famous Imperial Peninsula Pot that heats and warms.

Model B-70-50 2-Oven Electric Range with "THINKING TOP!"

Model B-10-50 NEW "SPECIAL 20" ELECTRIC RANGE WITH FRENCH DOORS --and new, automatic Roll-to-You Shelf.

Model B-10-50 NEW AUTOMATIC WARMER and COFFEE

Model B-10-50 NEW AUTOMATIC WARMER and COFFEE It's the famous Imperial Peninsula Pot that heats and warms.

Model B-70-50 2-Oven Electric Range with "THINKING TOP!"

Model B-10-50 NEW "SPECIAL 20" ELECTRIC RANGE WITH FRENCH DOORS --and new, automatic Roll-to-You Shelf.

Model B-10-50 NEW AUTOMATIC WARMER and COFFEE

Model B-10-50 NEW AUTOMATIC WARMER and COFFEE It's the famous Imperial Peninsula Pot that heats and warms.

Model B-70-50 2-Oven Electric Range with "THINKING TOP!"

Model B-10-50 NEW "SPECIAL 20" ELECTRIC RANGE WITH FRENCH DOORS --and new, automatic Roll-to-You Shelf.

Model B-10-50 NEW AUTOMATIC WARMER and COFFEE

Model B-10-50 NEW AUTOMATIC WARMER and COFFEE It's the famous Imperial Peninsula Pot that heats and warms.

Model B-70-50 2-Oven Electric Range with "THINKING TOP!"

Model B-10-50 NEW "SPECIAL 20" ELECTRIC RANGE WITH FRENCH DOORS --and new, automatic Roll-to-You Shelf.

Model B-10-50 NEW AUTOMATIC WARMER and COFFEE

Model B-10-50 NEW AUTOMATIC WARMER and COFFEE It's the famous Imperial Peninsula Pot that heats and warms.

Model B-70-50 2-Oven Electric Range with "THINKING TOP!"

Model B-10-50 NEW "SPECIAL 20" ELECTRIC RANGE WITH FRENCH DOORS --and new, automatic Roll-to-You Shelf.

Model B-10-50 NEW AUTOMATIC WARMER and COFFEE

Model B-10-50 NEW AUTOMATIC WARMER and COFFEE It's the famous Imperial Peninsula Pot that heats and warms.

Model B-70-50 2-Oven Electric Range with "THINKING TOP!"

Model B-10-50 NEW "SPECIAL 20" ELECTRIC RANGE WITH FRENCH DOORS --and new, automatic Roll-to-You Shelf.

Model B-10-50 NEW AUTOMATIC WARMER and COFFEE

Model B-10-50 NEW AUTOMATIC WARMER and COFFEE It's the famous Imperial Peninsula Pot that heats and warms.

Model B-70-50 2-Oven Electric Range with "THINKING TOP!"

Model B-10-50 NEW "SPECIAL 20" ELECTRIC RANGE WITH FRENCH DOORS --and new, automatic Roll-to-You Shelf.

Model B-10-50 NEW AUTOMATIC WARMER and COFFEE

Model B-10-50 NEW AUTOMATIC WARMER and COFFEE It's the famous Imperial Peninsula Pot that heats and warms.

Model B-70-50 2-Oven Electric Range with "THINKING TOP!"

Model B-10-50 NEW "SPECIAL 20" ELECTRIC RANGE WITH FRENCH DOORS --and new, automatic Roll-to-You Shelf.

Model B-10-50 NEW AUTOMATIC WARMER and COFFEE

Model B-10-50 NEW AUTOMATIC WARMER and COFFEE It's the famous Imperial Peninsula Pot that heats and warms.

Model B-70-50 2-Oven Electric Range with "THINKING TOP!"

Model B-10-50 NEW "SPECIAL 20" ELECTRIC RANGE WITH FRENCH DOORS --and new, automatic Roll-to-You Shelf.

Model B-10-50 NEW AUTOMATIC WARMER and COFFEE

Model B-10-50 NEW AUTOMATIC WARMER and COFFEE It's the famous Imperial Peninsula Pot that heats and warms.

Model B-70-50 2-Oven Electric Range with "THINKING TOP!"

Model B-10-50 NEW "SPECIAL 20" ELECTRIC RANGE WITH FRENCH DOORS --and new, automatic Roll-to-You Shelf.

Model B-10-50 NEW AUTOMATIC WARMER and COFFEE

Model B-10-50 NEW AUTOMATIC WARMER and COFFEE It's the famous Imperial Peninsula Pot that heats and warms.

Model B-70-50 2-Oven Electric Range with "THINKING TOP!"

Model B-10-50 NEW "SPECIAL 20" ELECTRIC RANGE WITH FRENCH DOORS --and new, automatic Roll-to-You Shelf.

Model B-10-50 NEW AUTOMATIC WARMER and COFFEE

Model B-10-50 NEW AUTOMATIC WARMER and COFFEE It's the famous Imperial Peninsula Pot that heats and warms.

Model B-70-50 2-Oven Electric Range with "THINKING TOP!"

Model B-10-50 NEW "SPECIAL 20" ELECTRIC RANGE WITH FRENCH DOORS --and new, automatic Roll-to-You Shelf.

Model B-10-50 NEW AUTOMATIC WARMER and COFFEE

Model B-10-50 NEW AUTOMATIC WARMER and COFFEE It's the famous Imperial Peninsula Pot that heats and warms.

Model B-70-50 2-Oven Electric Range with "THINKING TOP!"

Model B-10-50 NEW "SPECIAL 20" ELECTRIC RANGE WITH FRENCH DOORS --and new, automatic Roll-to-You Shelf.

Model B-10-50 NEW AUTOMATIC WARMER and COFFEE

Model B-10-50 NEW AUTOMATIC WARMER and COFFEE It's the famous Imperial Peninsula Pot that heats and warms.

Model B-70-50 2-Oven Electric Range with "THINKING TOP!"

Model B-10-50 NEW "SPECIAL 20" ELECTRIC RANGE WITH FRENCH DOORS --and new, automatic Roll-to-You Shelf.

Model B-10-50 NEW AUTOMATIC WARMER and COFFEE

Model B-10-50 NEW AUTOMATIC WARMER and COFFEE It's the famous Imperial Peninsula Pot that heats and warms.

Model B-70-50 2-Oven Electric Range with "THINKING TOP!"

Model B-10-50 NEW "SPECIAL 20" ELECTRIC RANGE WITH FRENCH DOORS --and new, automatic Roll-to-You Shelf.

Model B-10-50 NEW AUTOMATIC WARMER and COFFEE

Model B-10-50 NEW AUTOMATIC WARMER and COFFEE It's the famous Imperial Peninsula Pot that heats and warms.

Model B-70-50 2-Oven Electric Range with "THINKING TOP!"

Model B-10-50 NEW "SPECIAL 20" ELECTRIC RANGE WITH FRENCH DOORS --and new, automatic Roll-to-You Shelf.

Model B-10-50 NEW AUTOMATIC WARMER and COFFEE

Model B-10-50 NEW AUTOMATIC WARMER and COFFEE It's the famous Imperial Peninsula Pot that heats and warms.

Model B-70-50 2-Oven Electric Range with "THINKING TOP!"

Model B-10-50 NEW "SPECIAL 20" ELECTRIC RANGE WITH FRENCH DOORS --and new, automatic Roll-to-You Shelf.

Model B-10-50 NEW AUTOMATIC WARMER and COFFEE

Model B-10-50 NEW AUTOMATIC WARMER and COFFEE It's the famous Imperial Peninsula Pot that heats and warms.

Model B-70-50 2-Oven Electric Range with "THINKING TOP!"

Model B-10-50 NEW "SPECIAL 20" ELECTRIC RANGE WITH FRENCH DOORS --and new, automatic Roll-to-You Shelf.

Model B-10-50 NEW AUTOMATIC WARMER and COFFEE

Model B-10-50 NEW AUTOMATIC WARMER and COFFEE It's the famous Imperial Peninsula Pot that heats and warms.

Model B-70-50 2-Oven Electric Range with "THINKING TOP!"

Model B-10-50 NEW "SPECIAL 20" ELECTRIC RANGE WITH FRENCH DOORS --and new, automatic Roll-to-You Shelf.

Model B-10-50 NEW AUTOMATIC WARMER and COFFEE

Model B-10-50 NEW AUTOMATIC WARMER and COFFEE It's the famous Imperial Peninsula Pot that heats and warms.

Model B-70-50 2-Oven Electric Range with "THINKING TOP!"

Model B-10-50 NEW "SPECIAL 20" ELECTRIC RANGE WITH FRENCH DOORS --and new, automatic Roll-to-You Shelf.

Model B-10-50 NEW AUTOMATIC WARMER and COFFEE

Model B-10-50 NEW AUTOMATIC WARMER and COFFEE It's the famous Imperial Peninsula Pot that heats and warms.

Model B-70-50 2-Oven Electric Range with "THINKING TOP!"

Model B-10-50 NEW "SPECIAL 20" ELECTRIC RANGE WITH FRENCH DOORS --and new, automatic Roll-to-You Shelf.

Model B-10-50 NEW AUTOMATIC WARMER and COFFEE

Model B-10-50 NEW AUTOMATIC WARMER and COFFEE It's the famous Imperial Peninsula Pot that heats and warms.

Model B-70-50 2-Oven Electric Range with "THINKING TOP!"

Model B-10-50 NEW "SPECIAL 20" ELECTRIC RANGE WITH FRENCH DOORS --and new, automatic Roll-to-You Shelf.

Model B-10-50 NEW AUTOMATIC WARMER and COFFEE

Model B-10-50 NEW AUTOMATIC WARMER and COFFEE It's the famous Imperial Peninsula Pot that heats and warms.

Model B-70-50 2-Oven Electric Range with "THINKING TOP!"

Model B-10-50 NEW "SPECIAL 20" ELECTRIC RANGE WITH FRENCH DOORS --and new, automatic Roll-to-You Shelf.

Model B-10-50 NEW AUTOMATIC WARMER and COFFEE

Model B-10-50 NEW AUTOMATIC WARMER and COFFEE It's the famous Imperial Peninsula Pot that heats and warms.

Model B-70-50 2-Oven Electric Range with "THINKING TOP!"

Model B-10-50 NEW "SPECIAL 20" ELECTRIC RANGE WITH FRENCH DOORS --and new, automatic Roll-to-You Shelf.

Model B-10-50 NEW AUTOMATIC WARMER and COFFEE

Model B-10-50 NEW AUTOMATIC WARMER and COFFEE It's the famous Imperial Peninsula Pot that heats and warms.

Model B-70-50 2-Oven Electric Range with "THINKING TOP!"

Model B-10-50 NEW "SPECIAL 20" ELECTRIC RANGE WITH FRENCH DOORS --and new, automatic Roll-to-You Shelf.

Model B-10-50 NEW AUTOMATIC WARMER and COFFEE

Model B-10-50 NEW AUTOMATIC WARMER and COFFEE It's the famous Imperial Peninsula Pot that heats and warms.

Model B-70-50 2-Oven Electric Range with "THINKING TOP!"

Model B-10-50 NEW "SPECIAL 20" ELECTRIC RANGE WITH FRENCH DOORS --and new, automatic Roll-to-You Shelf.

Model B-10-50 NEW AUTOMATIC WARMER and COFFEE

Model B-10-50 NEW AUTOMATIC WARMER and COFFEE It's the famous Imperial Peninsula Pot that heats and warms.

Model B-70-50 2-Oven Electric Range with "THINKING TOP!"

Model B-10-50 NEW "SPECIAL 20" ELECTRIC RANGE WITH FRENCH DOORS --and new, automatic Roll-to-You Shelf.

Model B-10-50 NEW AUTOMATIC WARMER and COFFEE

Model B-10-50 NEW AUTOMATIC WARMER and COFFEE It's the famous Imperial Peninsula Pot that heats and warms.

Model B-70-50 2-Oven Electric Range with "THINKING TOP!"

Model B-10-50 NEW "SPECIAL 20" ELECTRIC RANGE WITH FRENCH DOORS --and new, automatic Roll-to-You Shelf.

Model B-10-50 NEW AUTOMATIC WARMER and COFFEE

Model B-10-50 NEW AUTOMATIC WARMER and COFFEE It's the famous Imperial Peninsula Pot that heats and warms.

Model B-70-50 2-Oven Electric Range with "THINKING TOP!"

Model B-10-50 NEW "SPECIAL 20" ELECTRIC RANGE WITH FRENCH DOORS --and new, automatic Roll-to-You Shelf.

Model B-10-50 NEW AUTOMATIC WARMER and COFFEE

Model B-10-50 NEW AUTOMATIC WARMER and COFFEE It's the famous Imperial Peninsula Pot that heats and warms.

Model B-70-50 2-Oven Electric Range with "THINKING TOP!"

Model B-10-50 NEW "SPECIAL 20" ELECTRIC RANGE WITH FRENCH DOORS --and new, automatic Roll-to-You Shelf.

Model B-10-50 NEW AUTOMATIC WARMER and COFFEE

Model B-10-50 NEW AUTOMATIC WARMER and COFFEE It's the famous Imperial Peninsula Pot that heats and warms.

Model B-70-50 2-Oven Electric Range with "THINKING TOP!"

Model B-10-50 NEW "SPECIAL 20" ELECTRIC RANGE WITH FRENCH DOORS --and new, automatic Roll-to-You Shelf.

Model B-10-50 NEW AUTOMATIC WARMER and COFFEE

Model B-10-50 NEW AUTOMATIC WARMER and COFFEE It's the famous Imperial Peninsula Pot that heats and warms.

Model B-70-50 2-Oven Electric Range with "THINKING TOP!"

Model B-10-50 NEW "SPECIAL 20" ELECTRIC RANGE WITH FRENCH DOORS --and new, automatic Roll-to-You Shelf.

Model B-10-50 NEW AUTOMATIC WARMER and COFFEE

Model B-10-50 NEW AUTOMATIC WARMER and COFFEE It's the famous Imperial Peninsula Pot that heats and warms.

Model B-70-50 2-Oven Electric Range with "THINKING TOP!"

Model B-10-50 NEW "SPECIAL 20" ELECTRIC RANGE WITH FRENCH DOORS --and new, automatic Roll-to-You Shelf.

Model B-10-50 NEW AUTOMATIC WARMER and COFFEE

Model B-10-50 NEW AUTOMATIC WARMER and COFFEE It's the famous Imperial Peninsula Pot that heats and warms.

Model B-70-50 2-Oven Electric Range with "THINKING TOP!"

Model B-10-50 NEW "SPECIAL 20" ELECTRIC RANGE WITH FRENCH DOORS --and new, automatic Roll-to-You Shelf.

Model B-10-50 NEW AUTOMATIC WARMER and COFFEE

Model B-10-50 NEW AUTOMATIC WARMER and COFFEE It's the famous Imperial Peninsula Pot that heats and warms.

Model B-70-50 2-Oven Electric Range with "THINKING TOP!"

Model B-10-50 NEW "SPECIAL 20" ELECTRIC RANGE WITH FRENCH DOORS --and new, automatic Roll-to-You Shelf.

Model B-10-50 NEW AUTOMATIC WARMER and COFFEE

Model B-10-50 NEW AUTOMATIC WARMER and COFFEE It's the famous Imperial Peninsula Pot that heats and warms.

Model B-70-50 2-Oven Electric Range with "THINKING TOP!"

Model B-10-50 NEW "SPECIAL 20" ELECTRIC RANGE WITH FRENCH DOORS --and new, automatic Roll-to-You Shelf.

Model B-10-50 NEW AUTOMATIC WARMER and COFFEE

Model B-10-50 NEW AUTOMATIC WARMER and COFFEE It's the famous Imperial Peninsula Pot that heats and warms.

Model B-70-50 2-Oven Electric Range with "THINKING TOP!"

Model B-10-50 NEW "SPECIAL 20" ELECTRIC RANGE WITH FRENCH DOORS --and new, automatic Roll-to-You Shelf.

Model B-10-50 NEW AUTOMATIC WARMER and COFFEE

Model B-10-50 NEW AUTOMATIC WARMER and COFFEE It's the famous Imperial Peninsula Pot that heats and warms.

Model B-70-50 2-Oven Electric Range with "THINKING TOP!"

Model B-10-50 NEW "SPECIAL 20" ELECTRIC RANGE WITH FRENCH DOORS --and new, automatic Roll-to-You Shelf.

Model B-10-50 NEW AUTOMATIC WARMER and COFFEE

Model B-10-50 NEW AUTOMATIC WARMER and COFFEE It's the famous Imperial Peninsula Pot that heats and warms.

Model B-70-50 2-Oven Electric Range with "THINKING TOP!"

Model B-10-50 NEW "SPECIAL 20" ELECTRIC RANGE WITH FRENCH DOORS --and new, automatic Roll-to-You Shelf.

Model B-10-50 NEW AUTOMATIC WARMER and COFFEE

Model B-10-50 NEW AUTOMATIC WARMER and COFFEE It's the famous Imperial Peninsula Pot that heats and warms.

Model B-70-50 2-Oven Electric Range with "THINKING TOP!"

Model B-10-50 NEW "SPECIAL 20" ELECTRIC RANGE WITH FRENCH DOORS --and new, automatic Roll-to-You Shelf.

Model B-10-50 NEW AUTOMATIC WARMER and COFFEE

Model B-10-50 NEW AUTOMATIC WARMER and COFFEE It's the famous Imperial Peninsula Pot that heats and warms.

Model B-70-50 2-Oven Electric Range with "THINKING TOP!"

Model B-10-50 NEW "SPECIAL 20" ELECTRIC RANGE WITH FRENCH DOORS --and new, automatic Roll-to-You Shelf.

Model B-10-50 NEW AUTOMATIC WARMER and COFFEE

Model B-10-50 NEW AUTOMATIC WARMER and COFFEE It's the famous Imperial Peninsula Pot that heats and warms.

Model B-70-50 2-Oven Electric Range with "THINKING TOP!"

Model B-10-50 NEW "SPECIAL 20" ELECTRIC RANGE WITH FRENCH DOORS --and new, automatic Roll-to-You Shelf.

Model B-10-50 NEW AUTOMATIC WARMER and COFFEE

Model B-10-50 NEW AUTOMATIC WARMER and COFFEE It's the famous Imperial Peninsula Pot that heats and warms.

Model B-70-50 2-Oven Electric Range with "THINKING TOP!"

Model B-10-50 NEW "SPECIAL 20" ELECTRIC RANGE WITH FRENCH DOORS --and new, automatic Roll-to-You Shelf.

Model B-10-50 NEW AUTOMATIC WARMER and COFFEE

Model B-10-50 NEW AUTOMATIC WARMER and COFFEE It's the famous Imperial Peninsula Pot that heats and warms.

Model B-70-50 2-Oven Electric Range with "THINKING TOP!"

Model B-10-50 NEW "SPECIAL 20" ELECTRIC RANGE WITH FRENCH DOORS --and new, automatic Roll-to-You Shelf.

Model B-10-50 NEW AUTOMATIC WARMER and COFFEE

Model B-10-50 NEW AUTOMATIC WARMER and COFFEE It's the famous Imperial Peninsula Pot that heats and warms.

Model B-70-50 2-Oven Electric Range with "THINKING TOP!"

Model B-10-50 NEW "SPECIAL 20" ELECTRIC RANGE WITH FRENCH DOORS --and new, automatic Roll-to-You Shelf.

Model B-10-50 NEW AUTOMATIC WARMER and COFFEE

Model B-10-50 NEW AUTOMATIC WARMER and COFFEE It's the famous Imperial Peninsula Pot that heats and warms.

Model B-70-50 2-Oven Electric Range with "THINKING TOP!"

Model B-10-50 NEW "SPECIAL 20" ELECTRIC RANGE WITH FRENCH DOORS --and new, automatic Roll-to-You Shelf.

Model B-10-50 NEW AUTOMATIC WARMER and COFFEE

Model B-10-50 NEW AUTOMATIC WARMER and COFFEE It's the famous Imperial Peninsula Pot that heats and warms.

Model B-70-50 2-Oven Electric Range with "THINKING TOP!"

Model B-10-50 NEW "SPECIAL 20" ELECTRIC RANGE WITH FRENCH DOORS --and new, automatic Roll-to-You Shelf.

Model B-10-50 NEW AUTOMATIC WARMER and COFFEE

Model B-10-50 NEW AUTOMATIC WARMER and COFFEE It's the famous Imperial Peninsula Pot that heats and warms.

Model B-70-50 2-Oven Electric Range with "THINKING TOP!"

Model B-10-50 NEW "SPECIAL 20" ELECTRIC RANGE WITH FRENCH DOORS --and new, automatic Roll-to-You Shelf.

Model B-10-50 NEW AUTOMATIC WARMER and COFFEE

Model B-10-50 NEW AUTOMATIC WARMER and COFFEE It's the famous Imperial Peninsula Pot that heats and warms.

Model B-70-50 2-Oven Electric Range with "THINKING TOP!"

Model B-10-50 NEW "SPECIAL 20" ELECTRIC RANGE WITH FRENCH DOORS --and new, automatic Roll-to-You Shelf.

Model B-10-50 NEW AUTOMATIC WARMER and COFFEE

Model B-10-50 NEW AUTOMATIC WARMER and COFFEE It's the famous Imperial Peninsula Pot that heats and warms.

Model B-70-50 2-Oven Electric Range with "THINKING TOP!"

Model B-10-50 NEW "SPECIAL 20" ELECTRIC RANGE WITH FRENCH DOORS --and new, automatic Roll-to-You Shelf.

Model B-10-50 NEW AUTOMATIC WARMER and COFFEE

Model B-10-50 NEW AUTOMATIC WARMER and COFFEE It's the famous Imperial Peninsula Pot that heats and warms.

Model B-70-50 2-Oven Electric Range with "THINKING TOP!"

Model B-10-50 NEW "SPECIAL 20" ELECTRIC RANGE WITH FRENCH DOORS --and new, automatic Roll-to-You Shelf.

Model B-10-50 NEW AUTOMATIC WARMER and COFFEE

Model B-10-50 NEW AUTOMATIC WARMER and COFFEE It's the famous Imperial Peninsula Pot that heats and warms.

Model B-70-50 2-Oven Electric Range with "THINKING TOP!"

Model B-10-50 NEW "SPECIAL 20" ELECTRIC RANGE WITH FRENCH DOORS --and new, automatic Roll-to-You Shelf.

Model B-10-50 NEW AUTOMATIC WARMER and COFFEE

Model B-10-50 NEW AUTOMATIC WARMER and COFFEE It's the famous Imperial Peninsula Pot that heats and warms.

Model B-70-50 2-Oven Electric Range with "THINKING TOP!"

Model B-10-50 NEW "SPECIAL 20" ELECTRIC RANGE WITH FRENCH DOORS --and new, automatic Roll-to-You Shelf.

Model B-10-50 NEW AUTOMATIC WARMER and COFFEE

Model B-10-50 NEW AUTOMATIC WARMER and COFFEE It's the famous Imperial Peninsula Pot that heats and warms.

Model B-70-50 2-Oven Electric Range with "THINKING TOP!"

Model B-10-50 NEW "SPECIAL 20" ELECTRIC RANGE WITH FRENCH DOORS --and new, automatic Roll-to-You Shelf.

Model B-10-50 NEW AUTOMATIC WARMER and COFFEE

Model B-10-50 NEW AUTOMATIC WARMER and COFFEE It's the famous Imperial Peninsula Pot that heats and warms.

Model B-70-50 2-Oven Electric Range with "THINKING TOP!"

Model B-10-50 NEW "SPECIAL 20" ELECTRIC RANGE WITH FRENCH DOORS --and new, automatic Roll-to-You Shelf.

Model B-10-50 NEW AUTOMATIC WARMER and COFFEE

Model B-10-50 NEW AUTOMATIC WARMER and COFFEE It's the famous Imperial Peninsula Pot that heats and warms.

Model B-70-50 2-Oven Electric Range with "THINKING TOP!"

Model B-10-50 NEW "SPECIAL 20" ELECTRIC RANGE WITH FRENCH DOORS --and new, automatic Roll-to-You Shelf.

Model B-10-50 NEW AUTOMATIC WARMER and COFFEE

Model B-10-50 NEW AUTOMATIC WARMER and COFFEE It's the famous Imperial Peninsula Pot that heats and warms.

Model B-70-50 2-Oven Electric Range with "THINKING TOP!"

Model B-10-50 NEW "SPECIAL 20" ELECTRIC RANGE WITH FRENCH DOORS --and new, automatic Roll-to-You Shelf.

Model B-10-50 NEW AUTOMATIC WARMER and COFFEE

Model B-10-50 NEW AUTOMATIC WARMER and COFFEE It's the famous Imperial Peninsula Pot that heats and warms.

Model B-70-50 2-Oven Electric Range with "THINKING TOP!"

Model B-10-50 NEW "SPECIAL 20" ELECTRIC RANGE WITH FRENCH DOORS --and new, automatic Roll-to-You Shelf.

Model B-10-50 NEW AUTOMATIC WARMER and COFFEE

Model B-10-50 NEW AUTOMATIC WARMER and COFFEE It's the famous Imperial Peninsula Pot that heats and warms.

Model B-70-50 2-Oven Electric Range with "THINKING TOP!"

Model B-10-50 NEW "SPECIAL 20" ELECTRIC RANGE WITH FRENCH DOORS --and new, automatic Roll-to-You Shelf.

Model B-10-50 NEW AUTOMATIC WARMER and COFFEE

Model B-10-50 NEW AUTOMATIC WARMER and COFFEE It's the famous Imperial Peninsula Pot that heats and warms.

Model B-70-50 2-Oven Electric Range with "THINKING TOP!"

Model B-10-50 NEW "SPECIAL 20" ELECTRIC RANGE WITH FRENCH DOORS --and new, automatic Roll-to-You Shelf.

Model B-10-50 NEW AUTOMATIC WARMER and COFFEE

Model B-10-50 NEW AUTOMATIC WARMER and COFFEE It's the famous Imperial Peninsula Pot that heats and warms.

Model B-70-50 2-Oven Electric Range with "THINKING TOP!"

Model B-10-50 NEW "SPECIAL 20" ELECTRIC RANGE WITH FRENCH DOORS --and new, automatic Roll-to-You Shelf.

Model B-10-50 NEW AUTOMATIC WARMER and COFFEE

Model B-10-50 NEW AUTOMATIC WARMER and COFFEE It's the famous Imperial Peninsula Pot that heats and warms.

Model B-70-5

Army Develops Important Force

CAMP DABBY, Italy (AP) — The U.S. Army is developing an important force in the mountainous northern Italy. It is called SETAF—Southern European Task Force, its command-

er is Brig. Gen. John E. (Mike) Michaelis of Lancaster, Pa. That choice is a tipoff to the significance of the job, for Michaelis rates high among the Army's bright young men. A World War II paratrooper, he was senior aide to President Eisenhower when Eisenhower was chief of staff. But to the American public, he is best remembered as the daredevil commander of the 27th Wollhound Regiment in Korea.

Behind would be SETAF, whose rockets could hammer an invader and block the few passes and accesses to Italy with atomic might. Meanwhile, Italian reserves would mobilize.

TELEVISION

WUBO TV CHANNEL 6 MONDAY
 7:30 Adventure with Uncle Walt
 8:00 Cartoon Carnival
 8:30 Toyland Express
 9:00 Weather - News - Sports
 9:30 Hometown
 10:00 Smart Rhythms
 10:30 Time for Chauncy
 11:00 The Greatest Drama
 11:30 John Daly News
 12:00 Robin Hood
 12:30 Duval Show
 1:00 Sportsman's Club
 1:30 Voice of Westons
 2:00 Love Letters
 2:30 December Bride
 3:00 Hill Parade
 3:30 People's Choice
 4:00 News - Sports - Weather
 4:30 Brightest Theatre
 5:00 Sign-Off

WUBO TV CHANNEL 6 TUESDAY MORNING
 8:00 Program Resume
 8:30 News-Weather
 9:00 Captain Kangaroo
 9:30 Four Faces
 10:00 Sign-On Program Resume
 10:30 News-Weather
 11:00 Morning News
AFTERNOON
 12:00 Valiant Lady
 12:30 Love of Life
 1:00 Search for Tomorrow
 1:30 Lullaby Light
 2:00 Jack Paar Show
 2:30 Love Story
 3:00 Robert Lewis
 3:30 What's Your Trouble
 4:00 Fishy Friends
 4:30 News around
 5:00 with Elaine
 5:30 Saturday Day
 6:00 Secret Storm
 6:30 On Your Account
WUBO TV CHANNEL 6 MONDAY
AFTERNOON
 2:00 Micky Mouse Club
 2:30 Superstars
 3:00 Sign Report
 3:30 Doug Edwards & News
 4:00 Biggie
 4:30 Sings 111
 5:00 Robin Hood
 5:30 Burns & Allen
 6:00 Jet Forum
 6:30 Love Letters
 7:00 December Bride
 7:30 Studio One
 8:00 Studio One
 8:30 Studio One
 9:00 11 O'Clock Report
 9:30 Lilo Show
 10:00 News & 80
TUESDAY MORNING
 8:00 Foot Pattern
 8:30 Morning Show
 9:00 Sign Report
 9:30 Open House
 10:00 Open House
 10:30 Garry Moore
 11:00 Arthur Godfrey
 11:30 Arthur Godfrey
 12:00 Arthur Godfrey
 12:30 Valiant Lady
AFTERNOON
 12:30 Love of Life
 1:00 Search for Tomorrow
 1:30 Lullaby Light
 2:00 Jack Paar Show
 2:30 Love Story
 3:00 Robert Lewis
 3:30 What's Your Trouble
 4:00 Fishy Friends
 4:30 News around
 5:00 with Elaine
 5:30 Saturday Day
 6:00 Secret Storm
 6:30 On Your Account

army would defend the frontiers. Michaelis of Lancaster, Pa. That choice is a tipoff to the significance of the job, for Michaelis rates high among the Army's bright young men. A World War II paratrooper, he was senior aide to President Eisenhower when Eisenhower was chief of staff. But to the American public, he is best remembered as the daredevil commander of the 27th Wollhound Regiment in Korea.

Speaking of SETAF, he said: "In my mind this is the forerunner of the future of the Army—immense mobility, small manpower (we have only 3,500 men) and great lethality of weapons. More firepower and less manpower." His task force is built around the Honest John, a rocket which can be fired with a conventional or an atomic warhead. Discussion of atomic warfare is not possible with the general but few believe SETAF planning is primarily for use of conventional warheads. Around the rockets will be a defense force of infantry and engineer specialists to protect them from any sudden enemy strike. "Our mission is to support the North Atlantic Treaty Organization forces in northern Italy," explained Michaelis. "The neutralization of Austria left a void. Italy invited us in. Our job will be to support NATO forces holding northern Italy until Italy can mobilize." Michaelis' tactical forces are deployed near Vicenza and Verona in northeast Italy. In case of an enemy strike, Italy's neutralized

Under the military new look of fewer men and more atomic firepower, exemplified by SETAF, the United States could cut her manpower commitments abroad without weakening her defenses. Atomic task force of limited size but great firepower could team with European armies of large manpower but conventional firepower and prevent any attacking force from occupying Western Europe, if this strategy works out. Meanwhile, the West could retaliate against the enemy heartland with strategic airpower.



PRINCE YOSHI, second son of Emperor Hirohito of Japan, wears traditional robes as he leaves the Imperial Palace in Tokyo after a 30th birthday ceremony marking his coming of age. The prince, second in line to the throne, visited the sanctuaries of his ancestors and then received the Grand Order of the Chrysanthemum from the Emperor.

Players For North Squad Completed

MIAMI (AP) — The North squad of 24 players for the Shrine's North-South all-star football game in the Orange Bowl Dec. 26 has been completed. Coaches Art (Pappy) Lewis of West Virginia and Bernie Crimmins of Indiana completed their squad yesterday with the addition of end Jim Freeman of Iowa and center Buddy Amendola of Connecticut. South coaches Wally Butts of Georgia and Rex Knight of South Carolina are expected to complete their squad this weekend and workouts will start early next week. Coach Andy Anderson of Miami is game director.

Christmas In Australia Arrives At Peak Of Gay Summer Season

SYDNEY, Australia (AP) — Imagine Christmas Day with the temperature 90 or even 100. There isn't a cloud in the sky. People are sleeping off their dinner on a beach, or under a tree in the mountains. The kids are running around in swimsuits. In Australia Christmas comes at the height of summer, and in the middle of the children's vacation from school. Most Australians try to get away from the city to the beach or mountains for Christmas-New Year. Hundreds of Australian factories and offices close for the period. Thus many persons spend Christmas Day away from home—in hotels, holiday cottages or tents. But wherever Australians happen to be, Christmas Day remains a family day. Often it is the one day in the year when whole families can get together. More Australians go to church on Christmas morning than on any other day. After church, hundreds of thousands appear at the many surfing beaches strung along the coast. The big meal, despite the heat is in the traditional English style:

turkey or some other poultry, ham, Peck, plum pudding with three-ply pieces inside and brandy sauce outside, and plenty to drink—all steaming hot except the ham and drinks. Some families cling to "best" clothes for the midday dinner, with dark suits for the men, but more and more people eat in a sun dress, or shorts and shirt. Christmas presents and cards are exchanged by the million. Most cards depict English villages and other white Christmas scenes.

DAILY CROSSWORD

ACROSS
 1. Ocean
 4. To select (slang)
 7. Soothe
 9. Natives of Arabia
 12. A slate-colored ungulate (trop. Am.)
 13. Parrot
 14. Peltier with a lid
 15. Conn. (Jap.)
 16. Toward
 17. Courts
 18. Dialect variant of "get"
 20. Taps again
 23. New wine
 24. Complies
 25. Celery
 26. Male offspring (pl.)
 27. A serving of bacon
 28. Remnant
 29. Dispatch, as letter
 30. Note in the scale
 31. Grampus
 32. Dialect variant of "horse"
 36. Plague
 38. Lawful
 39. Literary composition
 40. Beetles
 41. Land-measures
 42. — to a Grecian Urn

DOWN
 1. Leather
 2. Parts of golf courses
 3. Norse god
 4. Sporia
 5. Persia
 6. Moccasins
 7. Like stone
 8. Mandate
 10. A fine, cotton fabric
 11. One who swats (var.)
 13. Distra signal
 19. Goddess of harvest
 21. Consumed wood (pl.)
 22. Serve
 23. Tip
 25. The lower
 26. Signal
 27. Fabulous bird
 28. Plunders
 31. Express
 33. Monaster
 34. Salt (chem.)
 35. Cunning
 37. Man's name
 38. Sign of the zodiac

Yesterday's Answer

1	2	3	4	5	6	7	8	9	10	11
12	13	14	15	16	17	18	19	20	21	22
23	24	25	26	27	28	29	30	31	32	33
34	35	36	37	38	39	40	41	42	43	44
45	46	47	48	49	50	51	52	53	54	55
56	57	58	59	60	61	62	63	64	65	66

DAILY CROSSWORD

ACROSS
 1. American Indians
 8. Amundsen's schooner in Antarctic expedition
 9. A wall recess
 10. Of a lobe
 12. Place of worship
 13. Greek letter
 14. Hired slinger (slang)
 15. Epoch
 18. At home
 17. City (Vt.)
 20. Fish
 22. Head covering
 23. Before
 26. Cantored easily
 28. Sneer
 30. A sign of the zodiac
 31. A wing
 32. Music note
 33. Weariness
 37. Gallium (sym.)
 39. Leap
 40. Fresh-water tortoise
 43. Apportion
 45. Aviator
 46. A game of chance
 47. Soothe
 48. Boy slowly
 49. Negative votes

DOWN
 1. Storage place for fodder
 2. Performer
 3. City (Kan.)
 4. Varying weight
 5. Girl's name
 6. Native of Rome
 7. Diminutive of Abraham
 8. The "Three Wise Men" or
 9. Scold
 11. Flowed
 15. Tree
 18. Little child
 19. River (Eng.)
 20. Suck
 21. Female deer
 24. Soak Sax
 25. Assam silk
 26. Worm
 27. Kettle
 28. Girls' nickname
 29. Thin plate, or layer
 31. Viper
 33. Oriental obscenity (var.)
 34. Coin (Latvia)
 35. A cooling device
 38. Malt beverages
 41. Affirmative vote
 42. Arid
 44. Coin (Latvia)
 45. A cooling device

Yesterday's Answer

1	2	3	4	5	6	7	8	9	10	11
12	13	14	15	16	17	18	19	20	21	22
23	24	25	26	27	28	29	30	31	32	33
34	35	36	37	38	39	40	41	42	43	44
45	46	47	48	49	50	51	52	53	54	55
56	57	58	59	60	61	62	63	64	65	66

States' Position Is Hot Issue

JACKSON, Miss. (AP) — Whether individual states can nullify acts of the federal government without seceding from the Union is becoming a hot issue in Mississippi where the Legislature meets Jan. 3 in consideration of legislation which would bolster segregation.

In a sequence reminiscent of events which led to the Civil War there have been these developments: The Legislature created the Legal Education Advisory Committee to devise means of circumventing the Supreme Court decision of May 17, 1954, outlawing segregation in public schools.

The publication proponents have come back with an answer: The northern states themselves have nullified acts of Congress or Supreme Court decisions without leaving the Union. Neither side has suggested secession as a solution to the segregation issue.



THREE DIMENSIONAL pictures in color or black and white are made with stereo camera. This one by Kodak.

Radio-TV Highlights

NEW YORK (AP) — It's possible that there's a steadily increasing television audience among those in the age of retirement. There are no statistics available to support the theory. Actually it's just a hunch based on the fact that I have heard of three older couples who recently acquired sets and the viewing habit. What interests me is that they're glued to daytime television.



35 MILLIMETER CAMERAS for gift giving range from this fine Cine-Kodak down to models that may be had for around \$50.

If I had reached the age of retirement I'd be interested in what's happening on television these week-day afternoons. You wouldn't catch me staying up till midnight to see this and that.



BEFORE THE BIG DAY IS OVER, the new cocktail table that appears under the tree starts its busy life as a home refreshment center. Moisture-resistant tops make this gift practical as well as ornamental. Courtesy table by Mettoy L. Gallatin for American of Martinsville.

Well, if I were sitting before the set these bleak winter afternoons I'd tune to Matinee Theater (NBC-TV Monday through Friday). I've been able to see only three or four of these, but from what I've seen it's one of the best of such programs on TV.

Now comes more good news for daytime viewers. ABC-TV has just acquired 100 feature length British films from J. Arthur Rank. Beginning Jan. 16 they'll come on ABC stations week-days for two-hour periods.

3 DAY SPECIAL
 Don't Miss this chance to **SAVE \$7.96** at **Firestone**



Regular \$17.95 Value
9.99 Special Sale Price
STEAM or DRY IRON
 Use it as a regular dry iron, or add TAP WATER for use as a steam iron. Iron up to 1 1/2 hours on a filling! Steam is accurately distributed over entire soleplate. Perfectly balanced. Fingertip temperature control gives correct heat. A pleasure to use!

Pay only **75c A Week!**
OPEN EVERY EVENING UNTIL 9:00 P. M.
Firestone

Radio

WYER-SANFORD 1000 WAVELENGTHS MONDAY
AFTERNOON
 1:00 World at Six
 1:30 Twisted Songs
 2:00 Sports Book
 2:30 Music at Random
 3:00 Drifting On a Cloud
 3:30 News Update
 4:00 Night Edition
 4:30 United States
 5:00 It's Dancing
 5:30 News with Music
 6:00 News
 6:30 Layman's Call to Prayer
TUESDAY MORNING
 8:00 Sign
 8:30 Layman's Call to Prayer
 9:00 News
 9:30 Western Jamboree
 10:00 News
 10:30 Great Oleck Club
 11:00 Sports At A Glance
 11:30 Jackey's Choice
AFTERNOON
 12:30 World at Six
 1:00 News
 1:30 Layman's Call to Prayer
 2:00 News
 2:30 News
 3:00 News
 3:30 News
 4:00 News
 4:30 News
 5:00 News
 5:30 News
 6:00 News
 6:30 News
 7:00 News

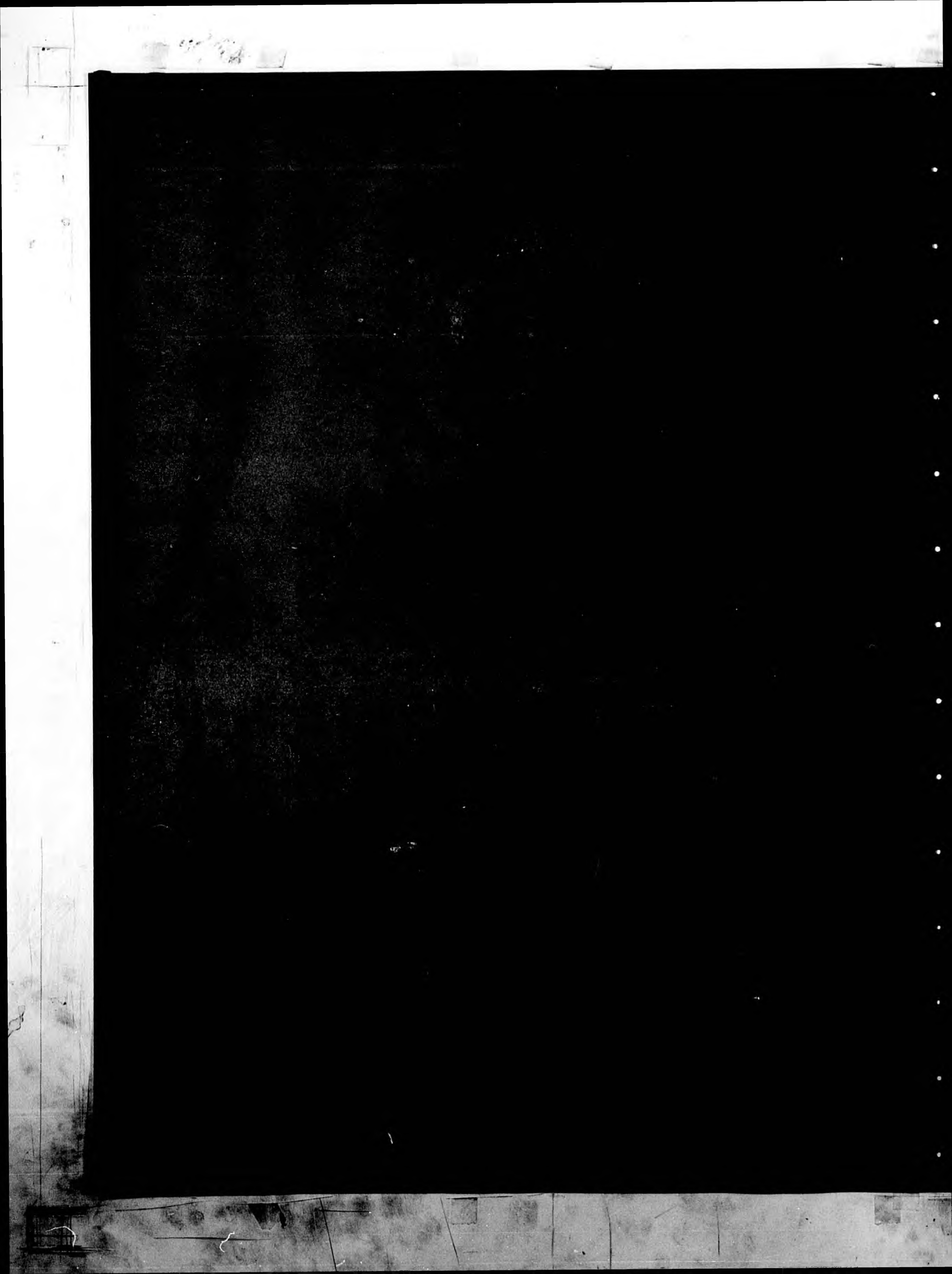
RITZ
 LAT TIME TODAY
 ROBERT MITCHUM AND FRANK SINATRA IN "NOT AS A STRANGER"
 STARTS TOMORROW

Roy Wall
 PLUMBING
 311 E. 2nd St.

Home for Christmas or any trip
Some BY GREYHOUND.
 America's Lowest ONE-WAY FARES
 Fast SERVICE Ever
 With Conventional New SCHEICRUISERS and HIGHWAY TRAVELER Coaches
 It's for more fun to make your holiday trips by GREYHOUND! Why drive? Ride the fastest buses on the highways. Relax more — sightsee more — and save more... Go GREYHOUND!

New Orleans, La.	12.50	24.70	Miami, Fla.	5.70	10.30
Atlanta, Ga.	9.50	16.00	Charlotte, N.C.	16.15	22.70
Washington, D. C.	17.70	31.00	W. Va.	4.35	7.85
Charleston, S. C.	8.40	15.35	Sarasota, Fla.	15.00	25.30
Birmingham, Ala.	10.00	19.10	St. Louis, Mo.	20.30	34.60
			Houston, Tex.	20.30	34.60

GREYHOUND BUS STATION
 750 W. 9th • Phone 60



5
More Shopping Days
Until Christmas

The Sanford Herald

Weather
Partly cloudy today through
Tuesday. Cooler Tuesday. High
today 72 to 76, low tonight 42 to
50.

VOLUME XLVI Established 1908 SANFORD, FLORIDA MONDAY, DECEMBER 19, 1955 Associated Press Leased Wire No. 312

Balding First In PGA Play

Final Golf Scores In Mayfair Open Announced Here

- Final scores according to starting times in yesterday's Mayfair Inn Open are given as follows:
- Geo. T. Preisinger.
 - Baden, N. C. 72-72-75-77 296;
 - Rev. Nabers, St. Petersburg, Fla. 75-75-74-78 300;
 - Jack Pearson, Miami Fla. 73-73-73-71 290;
 - Ray Terry, Cocoa, Fla. 76-72-72-71 291;
 - Alvin Dark, Lake Charles, La. 72-78-77-79 306;
 - Bob Toski, Livingston, N. J. 71-71-75-67 284;
 - George Bayer, Cincinnati, Ohio, 67-74-76-69 286;
 - Ted Locke, Davenport, Ia. 75-71-75-77 296;
 - Hans Merrill, Magadore, Ohio, 75-69-73-73 290;
 - Lou Bateman, Ocala, Fla. 71-70-76-71 288;
 - Pete Cook, Coral Gables, Fla. 72-78-74-71 297;
 - Dick Chassee, Normandy, Mo., 74-68-73-68 286;
 - James Smoot, Crestwood, N. J. 72-73-72-70 286;
 - Ruf Coffee, Moundsville, W. Va. 67-74-75-77 233;
 - John Weitzel, Hershey, Pa., withdrew
 - Frank Boynton, Winter Park, Fla. 72-73-71-71 287;
 - J. F. Cleary, Hartford, Conn. 73-70-74-78 294;
 - Bob Keller, Pittsburgh, Pa. 68-71-75-68 282;
 - Bob Gajda, Detroit, Mich., withdrew
 - Ed Kirkland, Orlando, Fla. 70-73-72-75 290;
 - John Carr, Willowick, Ohio, 73-69-72-73 287;
 - Lionel Hebert, Erie, Pa. 74-70-71-72 287;
 - Fred Wampler, Indianapolis, Ind., withdrew
 - Ivan Gants, Indianapolis, Ind. 70-71-72-71 284;
 - Buddy Weaver, Houston, Tex. 71-69-73-69 282;
 - Lou Barbaro, Deal, N. J. 69-73-72-74 288;
 - Eidon Briggs, Lansing, Mich. 73-70-71-76 289;
 - James T. Black, Red Bank, Del., 71-70-73-68 279;
 - Mike Dietz, Lake Orion, Mich. 71-73-70-74 283;
 - John Barnum, Belmont, (Continued on Page 9)

Property Survey Completed For Firm

A survey of the property proposed to be used by the Sanford Manufacturing Company for the erection of a modern plant, has been completed, said Chamber of Commerce Manager Forrest Breckenridge.

The survey has been forwarded to contractors who will provide plans and specifications for the new building to be considered.

The local manufacturing plant is planning an expansion program that will immediately double their capacity and eventually bring a 600 employe total to the community.

Sanford Manufacturing Company produces shirts and pajamas under a brand name of "Balding."

Christmas Holidays Foremost

Sermons from the pulpits of Sanford Churches yesterday turned closer to the Christmas season. Yesterday at the First Christian Church Pastor Perry L. Stone preached on "You Shall Call His Name Jesus." He said, "In Bible time when the Jews named their babies they chose names with religious meanings. That is true of the Christmas Baby, the Child of Bethlehem, who in Matthew, chapter one, is given three names: Christ, meaning 'the anointed one'; Emmanuel, meaning 'God with us'; and Jesus, meaning, in its Hebrew form, 'the Lord is salvation.'"

Regarding the last the minister said "The third name given to our Lord in this chapter, dearer than the word 'mother,' the sweetest name on earth, is Jesus. It was given before his birth. Gabriel said to the virgin Mary, 'I have found favor with God, and thou shalt bear a son, and thou shalt call his name Jesus, for he will save his people from their sins.' The blessed work, the Saviorhood, Christmas-born Baby. By his life as a man he proved that he had power on earth to forgive sins; and to that truth millions of sincere believers can testify from experience.

"When you think of Christmas, think of the birth of the Savior. Think of his appropriate personal name Jesus; and remember that it was given because he would save his people from their sins. Christmas without Christ in it is a counterfeit. So far as you are concerned, was the birth of Jesus all in vain? It was if you have never accepted his offer of deliverance from the guilt and power of sin. Jesus is God's inexpressible Christmas gift. Will you receive him? Do you feel a welling up of gratitude to him for pouring out his life blood for you on the cross? Will you not, as a birthday present, and Christmas gift combined, give him your heart, the devotion of your life?"

At the Little Brown Church of the Hill (Congregational Christian), the Rev. J. Bernard Root spoke on "The Voice of the Prophets."

"Malachi, 'the servant of God,' the last of the Old Testament prophets, came 1,000 years after Moses. That thousand years was the most significant era of history in permanently laying the foundation of ethical religion. It was packed with a vibrant action and revelation for which all subsequent ages are in great debt," the Rev. Root brought out.

"Compared with the 1,000 years of British culture from King Alfred to the present time of the

PGA champion from Toronto edged Ed "Porky" Oliver of Le-mont, Ill., and big Mike Souchak of Grossinger's N. Y., by one stroke. He played consistent golf throughout the 72 holes of the tournament and was never considered a strong contender for the top place even though he was playing under par all the way through.

Thursday, Balding came in one under par, four under par on Friday, four under par on Saturday, and yesterday, possibly because of stiff winds over the course, came in with a 68, two under par. His total score for the tournament was 289, 11 under par for the top money of \$2,400, over the 6,200 yard Mayfair Inn Seminole Country Club course.

"Now, I'll be able to continue the tour," Balding said with a big grin when he was handed his check by Mayfair Inn Manager Frank Mebane Jr. A bit shy, the well-tanned golfer admitted that his driver and putter are his best clubs.

A 25-foot putt for an eagle on the second hole and seven-foot birdie putts on 12 and 14 brought the wiry Canadian his first American triumph.

"After winning a company tournament six years ago," said Balding, "I just decided to try my luck as a professional." And in his usual shy manner, concluded, "I wasn't married then so I could just pick up and go when I wanted to."

Oliver, who entered the final round yesterday tied with Balding for the top spot in the tournament, lost his chance to pick up the big check when he bogeyed two par-three holes and finished with a 69 for a total tournament score of 270.

Big Mike Souchak, closed as a top contender with a 66, getting birdies on the final two holes and climbed from a tie for seventh place into a tie for second.

Tommy Boll, Chattanooga, Tenn., and Chick Harbert of Northville, Mich., came up on the list with final 69's for 272 totals and a tie for fourth place.

Souchak was a favorite throughout the tournament as a contender for the top money.

Don Fairchild of Casey, Ill., whose third round 63 set a course record, tied for sixth with a 71 and a total 273. Shelby Mayfield of Westbury, N. Y., also had a 273 when he closed out the final 18 holes with 68.

The big galleries were following (Continued on Page 5)

Property Survey Completed For Firm

A survey of the property proposed to be used by the Sanford Manufacturing Company for the erection of a modern plant, has been completed, said Chamber of Commerce Manager Forrest Breckenridge.

The survey has been forwarded to contractors who will provide plans and specifications for the new building to be considered.

The local manufacturing plant is planning an expansion program that will immediately double their capacity and eventually bring a 600 employe total to the community.

Sanford Manufacturing Company produces shirts and pajamas under a brand name of "Balding."

L. B. Higgins Dies In High Springs

L. B. Higgins, formerly of Sanford, died today in High Springs at the home of his daughter, Mrs. Paul Oxford, after a brief illness.

A native of Alabama, he lived in Sanford for several years. Survivors include two daughters, Mrs. Oxford of High Springs and Mrs. H. D. Russell of Sanford and one son, Joseph Higgins of Miami, also several sisters and one brother all of Alabama. Funeral plans are incomplete.

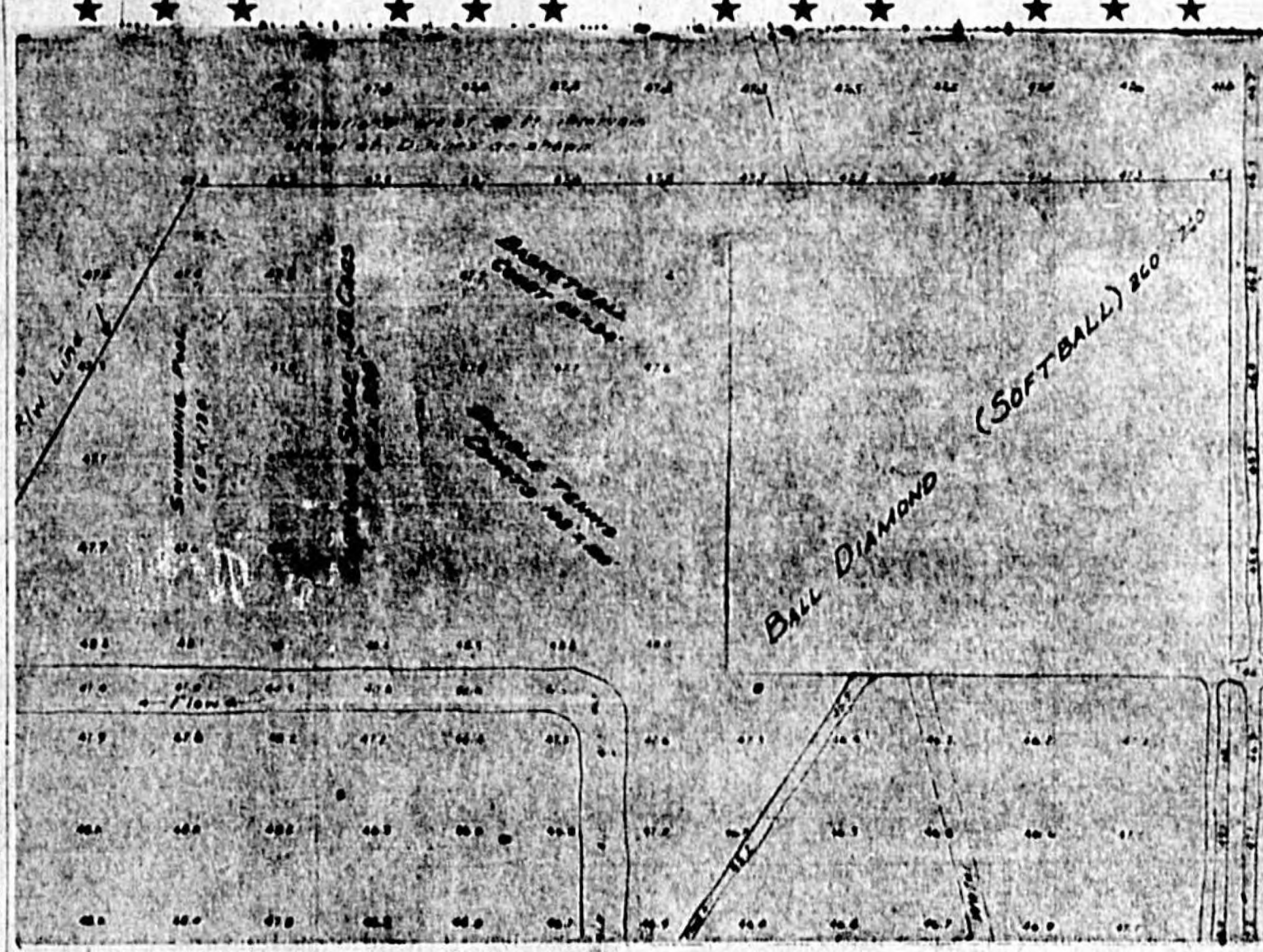
Film To Be Shown At Lions Luncheon

A film will be shown at tomorrow's noon luncheon meeting of the Sanford Lions Club that should be of interest to business men of the community, Club Secretary Hugh Duncan announced today.

Duncan said that E. F. Chaney of Casselberry, representing the King-Merritt Company, will show a film explaining mutual fund investments and stock exchange proceedings.

The film, Duncan said, will be followed by a question and answer period.

Ground Broken Friday For Recreational Area



GOLDSBORO RECREATIONAL AREA Immediately south of the Goldsboro Elementary School and joining the school property. The area contains about 50 acres to be developed into the colored park for recreation activities. (Photo by Jameson)

Goldsboro Playground Is Reality

14-Ft. Land Deed Given To Group

Ground was broken Friday morning for one of the largest recreational areas ever to be undertaken in this area.

Working together to bring the project to completion were City Commissioner John Krider, representing the City of Sanford, and Commissioner Fred Dyson, representing Seminole County, with School Superintendent Rayburn T. Milwee coordinating the efforts and working with the committee.

A 14-foot strip of land dividing two areas that would make up the recreational area, and property of the Atlantic Coast Line Railroad was turned over to the School Board to climax the efforts in making the recreation project a reality. Leroy A. Anderson, Atlantic Coast Line Railroad official here, cooperated with the committee and was successful in turning over to the group a deed for the property.

The Goldsboro Recreational Area, which is located immediately behind the Goldsboro Elementary School, includes approximately 50 acres in which complete recreational facilities will be located for use by colored children of Seminole County.

Work will be started on the (Continued on Page 5)

Policeman's Ball Completed As Many Attend

The fourth annual Policeman's Ball, held at the Mayfair Inn last Saturday night was a complete success, according to members of the local Policemen's Benevolent Association.

More than 500 dancers and visitors attended the dance which is held each year as one of the first functions of the local season.

Music provided by the Starlighters was the attraction of the week-end affair which drew dancers from the entire area.

Patrolman Ben Butler, chairman of the local Policemen's Benevolent Association Group said that "the dance was a success from the beginning to the end."

Proceeds from the affair will benefit the associations fund which provides assistance to families of the local police organization in time of stress or death.

Door prizes and spot dances were held intermittently throughout the evening.

Sanford Residents Wanted Of Women

A letter from Harold Goforth, manager of the Marion County Chamber of Commerce, has been received by the Seminole County Chamber of Commerce warning them of the possibilities of members of the notorious Williamson family operating in this area.

Goforth's letter states that "two women, aged middle 30's, neatly dressed, thin, and approximately 5 feet 2 or 3 inches tall, traveling in a late model Oldsmobile 98 four door sedan with a Georgia license tag No. 412111 have been operating in the Ocala area on Friday, Dec. 9."

"One of the women," said Goforth, "talks with a slight brogue or accent definitely not southern. They're thought to be members of the notorious Williamson family, well known for selling inferior merchandise at higher prices and representing it to be of higher grade," the letter states. "In Ocala," said Goforth in his letter to the Seminole County Chamber of Commerce, "they were wearing rugs represented as stolen hooked rugs made in a shop they operated in Atlanta, Georgia."

"The rugs have been tested in Ocala," said Goforth, "and proven not to be woolen."

Chamber of Commerce Manager Forrest Breckenridge warns Sanford and Seminole County citizens that the women may be operating here and asks everyone to be on the lookout for them. If they are recognized here, Breckenridge said, "please report them to the Chamber of Commerce at telephone number 1806."

Amateur Award Not Far Behind Pro

Doug Sanders finished in yesterday's Mayfair Inn Open just five strokes behind the leading pro to win the top award for amateurs in the tournament.

Presented with a watch as his trophy for taking top honors in the group of ten amateurs that played in the final round of the tournament, Sanders expressed his appreciation for the fine sportsmanship displayed throughout the four days of play.

Standing by and watching the presentation was Seminole High School's Assistant Principal, Andy Bracken who coached the University of Florida Golf Team where Sanders played for three years.

Sanders told Bracken yesterday, as he completed the final 18 holes, "This is like old home week with Don Bisplinghoff and Don Reagan here for the tournament."

Bracken said yesterday that "Sanders has been the Number One golfer on the University of Florida Golf Team for the last three years."

ColC President Tells Committee

The Seminole County Chamber of Commerce president, George Touhy, today announced his committee which will formulate plans for this area's participation in the Florida Products Festival slated for next month. The State-wide festival is a 10-day promotional campaign which will focus attention on products manufactured, produced or packaged in this state.

Those named to the committee are Ralph Austin Smith, chairman, Bob Kilvan, Harold Kastner, and James A. Wright.

This committee, said President Touhy, will coordinate the activities of Seminole County in the statewide event. Touhy said today that the Seminole County Chamber of Commerce will offer full cooperation in the campaign.

NO NAMES MENTIONED TAIPEI, Formosa (AP)—The Nationalist Chinese Tatan News Agency claimed today that 10 American prisoners of war captured in Korea were being trained as spies near Mukien, Manchuria. The report, without confirmation, mentioned no names.

MULTILINGUAL SANTA MONTREAL (AP)—Santa Claus spoke in seven languages yesterday at the annual Christmas party of the Immigrants' Aid Society, but even that wasn't multilingual enough for some of the 161 youngsters. Seventeen different nationalities were represented.

Mrs. Floyd Cooper Is Collecting Dues

Membership dues to the Interfraternity Association dance may be paid to Mrs. Floyd Cooper from Tuesday through Friday at her home at 1718 Magnolia Ave., according to an announcement made today.

Invitations to the annual Christmas dance may be secured at this time only. New memberships of men and women belonging to national college social fraternities are welcomed.

The affair will be formal and is to be held at the Mayfair Inn Monday Dec. 26, from 10 p. m. to 2:30 a. m. with music provided for dancing by Tony Perez and his orchestra.

WIDEAWAY CAPTURED TOKYO (AP)—Police said today they had arrested Hideo Nakamura, 47, a high school teacher who has lived alone, away from his wife and three children for the past four years.



THE FIRST SPADE OF DIRT was turned on the 50-acre recreational area in Goldsboro Friday by Supt. of Schools R. T. Milwee. Others taking part in the ceremony (left to right) are: County Commissioner Fred Dyson, School Maintenance Supervisor C. C. Howard, City Commissioner John Krider, Herbert Cherry, Chairman of Committee of Colored Citizens for the project, Leroy McLendon and James Hagan, committee members. (Staff Photo)

Jaycee Christmas Lighting Contest Wink

Mail to: Contest Chairman,
Jaycee Information Booth
Sanford, Florida

Name: _____

Address: _____

Type of Entry:

1. Resident _____

2. Commercial _____

(check one)

DEADLINE: THURSDAY, DECEMBER 22, 1955

THE MAYFAIR INN around the PGA Tournament about next year will be Ed "Porky" Oliver, the host. Following yesterday's Mayfair Inn Open, left to right, are: Leo J. Anderson, Sanford, local course, Jay Robert, Ed Oliver, and Manager Frank Mebane Jr. (Staff Photo)