

Shop and Save
In Sanford

The Sanford Herald

AN INDEPENDENT DAILY NEWSPAPER

SANFORD, FLORIDA, MONDAY, MAY 30, 1955

Associated Press Licensed Wire

No. 194

Weather

Mostly fair north and partly cloudy south portion through Tuesday; scattered afternoon showers thundershowers central portions today and south portion Tuesday.

Strolling In Sanford

Orlando Jayces today heard Dudley Odham, Sanford, former state Jayce president, speak on the Jayce movement in the U. S. and abroad. His talk featured the weekly luncheon meeting of the group.

Pete Baker stopped at a Lake Wales filling station to make a phone call Saturday when two men drove up and were asking directions to Tallahassee. After looking over the road map, the driver asked Baker if he could borrow his pencil. He obliged and stood there pondering "I know I've seen him somewhere before." Finally he asked, "Pardon me, but aren't you Dick Powell?" The last stranger, who is in Miami making a movie, confirmed Baker's thoughts when he replied, "Yes, I am."

Mr. and Mrs. L. E. Spencer are in Tallahassee where they will see their son, George M. Spencer, receive his doctor's degree in psychology tonight at graduation exercises at Florida State University. He will return this summer at FSU and was recently initiated into Phi Kappa Phi. Spencer graduated from Seminole High and received his bachelor's degree at Rollins and his master's also at FSU.

Sen. George Says Prolonged Session Is Not Necessary

WASHINGTON (AP)—Sen. George (D-Ga.) said today he sees no reason for Congress to remain in session either to await recommendations or get reports on the forthcoming Big Four conference.

Sen. Ives (R-N.Y.), agreeing, said in a separate interview: "What would we do about any reports we get—sound off in speeches? I don't believe it's a good idea for Congress to stay here."

Sen. Bridges of New Hampshire, chairman of the Senate Republican Policy Committee, said last week Congress ought to be on hand when the projected conference ends to get a report on progress and set upon any proposals that might come out of the meeting.

But Sen. Sparkman (D-Ala.) said he thinks the lawmakers could get through with their work by July 15 "unless something turns up that we don't know about now" and ought to do it.

Bargaining Session Set By CIO, Ford

DETROIT (AP)—The CIO United Auto Workers and Ford Motor Co. scheduled a Memorial Day bargaining session today with the union indicating a willingness to modify terms of its demand for a year-round wage.

The union yesterday offered to cut by more than 10 per cent the amount the company would be required to pay a laid-off employee each week under its guaranteed annual wage proposal.

But at the same time UAW President Walter Reuther accused the company of refusing to bargain in the "traditional give-and-take manner." Reuther declared the union was ready to make concessions all along to avert a strike if Ford would bargain on the guaranteed annual wage.

House To Consider Controversial Bill

TALLAHASSEE (AP)—The House Rules Committee today voted to put the milk bill before the House for consideration tomorrow night.

The committee acted by voice vote after an effort by Rep. Beasley of Walton County to strike the measure abolishing retail price controls on milk was defeated by a 17-0 rollcall vote.

Rep. Ostell of DeSoto County pushed for action at the Tuesday night session, contending the House had shirked in all past years its duty to pass the measure and that in fairness it should have an opportunity to bring it to final vote.

BULLDOZER CUTS CABLE
SAN ANTONIO, Tex. (AP)—A bulldozer cut a buried cable yesterday and knocked out 600 telephone and telegraph circuits.

M. H. Cunningham, Southwestern Bell Telephone Co. lead board member, said about 30 per cent of the lines between Houston and Dallas and San Antonio were out of service.

Cleveland Tells Opinion On Bill

In a recent letter to The Herald, Representative Mack N. Cleveland Jr. stated his objections to the Orlando Utilities Commission building a plant on the St. Johns River in Seminole County.

Vukovich Killed In Big Pile-Up At Indianapolis

INDIANAPOLIS (AP)—Bill Vukovich, 1953 and 1954 winner of the 500-mile auto race, burned to death today in a five-car pile-up of race cars, worst accident of the Memorial Day race since 1930.

The Walsh, AAA track official confirmed the Fresno, Calif., champion's death after his car plowed into a pile-up on the backstretch of the 2 1/2-mile track at the Indianapolis Motor Speedway.

Vukovich's car, third to hit the pile-up, caught fire.

The pile-up started when Ed Elisian ran into the retaining wall on the backstretch. Then Redger Ward's car spun and hit the side of an overhead footbridge, overturning along with the car of rookie Johnny Boyd.

Filed onto the wreckage were the cars of Vukovich and rookie Al Keller.

Jack McGrath, who had been battling Vukovich for the lead, had been knocked of the race at 131 miles.

Britain Is Facing Industrial Crisis; Worst Since 1926

LONDON (AP)—Britain faced her gravest industrial crisis since 1926 today as 67,000 striking railwaymen ended Prime Minister Eden's back-to-work appeal.

Eden's call for an emergency Sunday broadcast met a flat turn-down from Albert Hallworth, assistant general secretary of the striking union—the Associated Society of Locomotive Engineers and Firemen. Hallworth defiantly declared:

"We can and will hold out for at least three months. We are determined to see this thing through."

A member of the union's Executive Council declared: "The country will break before we break."

Eden in his broadcast asserted that his Conservative government, re-elected to another five-year term last week, will "do all we can to protect the nation from the worst effects of this strike."

"The government," he said, "will not hesitate to obtain any further power that may be necessary for this purpose."

Unusual Program Holds Attention Of Rotary Club

An unusual program that held the attention of his hearers was staged by A. Edwin Strohbecher at the weekly meeting of the Sanford Rotary Club at noon today at the Yacht Club.

Introduced by Charlie Morrison, program chairman for the day, in a manner that conveyed to the group that a serious talk would be forthcoming. Strohbecher then put on a quiz program based on the names or part of names of every member of the club past and present.

A panel consisting of Walter Haynes, William Bush, Jack Battison and George Tusk were put on the spot to answer the clues offered by Strohbecher and Morrison acting as timekeeper and Jack L. Greene serving as scorekeeper.

The decision of the Rev. H. L. Zimmerman, from which there was no appeal, was that Bill Bush won the prize offered by H. L. Perkins and Sen.

'Confession' Made To Killing In 1936

SAN DIEGO, CALIF. (AP)—An unemployed laborer with a police record of one offense has "confessed" the 29-year-old murder of Ruth Mae, Riverside YMCA secretary, but police are not yet convinced he is the right man.



CHIEF OF POLICE Roy Williams places a memorial pennant on the grave of former city policeman Robert C. Wilcox following yesterday's service at Evergreen Cemetery. Standing around the grave are members of the Sanford Police Department. (Staff Photo)

Memorial Services Conducted Sunday

Sanford Police Benevolent Assn. Has Rites At Evergreen Cemetery

The big role the police officer plays in guarding the peace and security of the nation was emphasized yesterday at a memorial service held by the Sanford Police Benevolent Association at Evergreen Cemetery.

"We are keenly aware of a never-ending war which knows no armistice, no quarter given nor asked," Chaplain Lloyd L. King of the Florida Peace Officers Association told a crowd of approximately 200. "It is brought about by the sins of many, the careless and predatory."

But King emphasized the conflict is "necessary to preserve the lives, properties, rights and peace of our citizens."

To accomplish this, he said, "we must maintain an army composed of dedicated men, each sworn to protect the people, apprehend and bring to trial those who have no respect for others. By custom, we call these men 'peace officers' and in justice we honor their memory."

Chief of Police Roy Williams, who placed memorial pennants on the graves of former policemen, said he planned to make the service an annual event.

Participating in the service, in addition to King, was the Rev. Milton H. Wray of the First Methodist Church.

Among the former officers honored were: George W. Harriott, Sam G. Gardner, Arthur R. Marshall, Green W. Smith, W. A. Tillis, Sam Smart, Charles M. Hand, James F. McClelland Sr., W. Conner Williamson, Robert C. Wilcox;

David Speer, George H. Tomlinson, Robert L. Kennedy, Wesley Prescott, F. D. Dyson, R. R. Whitten, J. A. Kiehrer, Joe Cameron, William Benton and Cleveland Jacobs.

Benton and Jacobs were killed in line of duty.

Red Chinese Said Willing To Talk On Formosa Issue

NEW DELHI, INDIA (AP)—V. K. Krishna Menon said today Red China would be willing to negotiate the Formosa issue with the Nationalists but only on an "internal basis."

Prime Minister Nehru's top foreign policy advisor, just returned from a trip to Peking, made the statement at the news conference at which he announced the Chinese would release four American airmen captured during the Korean War.

He did not explain what he meant by an "internal basis" for negotiation.

He declined to specify whether the Reds would meet the Nationalists in the presence of the United States. He said the Americans and Red Chinese were the main parties in the dispute and it was up to them to "say who were the others involved."

FSC Graduates Receive Degrees

LAKELAND (AP)—Degrees were conferred today on 187 graduates of Florida Southern University, including six who accepted the honors on the high seas.

Annexation Meeting Set

Quick Jury Action Is Planned Today In Ocala Shooting

OCALA, Fla. (AP)—Quick grand jury action was planned today against an elderly retired school teacher and his wife accused of shooting three police officers to death in a pitched battle at their home.

State attorney A. F. Bule said it "looks like premeditated murder." The couple were Edward S. Lindley, 73, and his wife Bertha, 70.

Killed in the gun battle were Deputies Curtis Youngblood and Bob Wooten and Asst. Chief M. D. Tuck of Ocala police.

Another deputy, W. G. Eggle Jr., also was hit but the state attorney said he "is coming along all right and will be available to testify within two weeks."

Sheriff Don McLeod said he was holding the couple for murder although he had not lodged formal charges. This will be done before they are arraigned, probably tomorrow.

The gun battle, in which hundreds of shots were fired, took place after officers answered the complaint of Douglas Wingfield that Lindley, his neighbor, shot at him while he was watering his flowers.

Multiple Charges Are Being Prepared Against Two Men

TAMPA (AP)—Multiple charges were prepared today against two men who led a Florida highway patrolman on a 110-mile-an-hour chase from Venice to Punta Gorda.

Det. Norman Brown said a hold order had been placed against the pair, now in Sarasota Memorial Hospital with injuries received when their automobile smashed into a filling station and burst into flames.

Brown said the men, identified as Allen M. Moore, 34, of Piquette, Ohio, and Kenneth R. Tuttle, 22, of St. Maries, Idaho, staged a holdup here Friday night and later stole an automobile.

Brown said a 15-year-old girl from Columbus, Mont., claimed the two men brought her here from Montana and that Tuttle promised to marry the girl when he got a divorce in Miami.

Former Resident Dies In Anclote

George Frederick Smith, 31, died recently at his home in Anclote after an illness of three years. Born near Greenville, N. C., he came to Florida in 1905 and became interested in celery growing and settled in Sanford.

In 1910 he married Miss Nellie Washburn of Louisville, Ky. who was a teacher in Sanford at that time.

Funeral services were held at Tarpon Springs in All Saints Episcopal Church. Burial followed in Sunny Acres cemetery.

Two Boys Booked After Break-In At Kastner Office

Two 14-year-old negro boys were retained Sunday afternoon after reportedly breaking into three of Harold Kastner's offices in the State Farmers' Market.

The youths, according to R. E. Carroll, deputy sheriff, who works with Kastner, took about 25 to 40 dollars, an electric razor and drank "I don't know how many soft drinks."

The break-in occurred between 1 and 2 p. m. and the boys were caught about 3:30 p. m.

Carroll stated he had a pair of bright colored socks in a paper bag on his desk when the boys allegedly broke the lock off the door and took them. After catching them he found one of them was wearing the socks. "That's how I spotted him," he said.

The hearing will be tomorrow. Kastner found the office open when he came down for a last minute check.

EXPECTS APPROVAL
VIENNA (AP)—Chancellor Julius Raab says his government soon will ask the Big Four to let Austria start raising her new army even before the Austrian independence treaty takes effect. Raab in a radio address last night said he expected the United States, Britain, France and the Soviet Union to approve the request.



ELECTED secretary-treasurer of Florida Chamber of Commerce Executives at the annual convention at Clearwater yesterday was Forrest Hockenberry (above), manager of the Seminole County Chamber of Commerce. (Staff Photo)

Peiping Radio Says 4 American Airmen Released By Reds

TOKYO (AP)—Peiping radio said tonight a military tribunal of the Supreme Court had tried four American airmen and sentenced them to "immediate deportation."

The trial was held May 24. A Chinese language broadcast gave no details.

Peiping charged that the four "committed such criminal actions as flying their military aircraft into China's territorial air to conduct harassment and provocation."

"Their crimes endangered the security of China and the peaceful life of the Chinese people," the broadcast continued.

The charges have long since been denied by the U. S. State Department.

Alabama Lad May Pay With His Life For Brutal Slaying

PANAMA CITY (AP)—Unless the Florida Supreme Court says otherwise, a 20-year-old Bolshay, Ala., youth must pay with his life for the rape slaying of a former Oklahoma high school beauty queen.

George Lowell Everett was convicted of first degree murder by a jury which deliberated only an hour after getting the case Saturday afternoon.

Since there was no recommendation for mercy, Circuit Judge E. Clay Lewis Jr., passed the mandatory death sentence.

Everett had no statement for reporters afterward. He had said previously, "I'll deserve whatever I get."

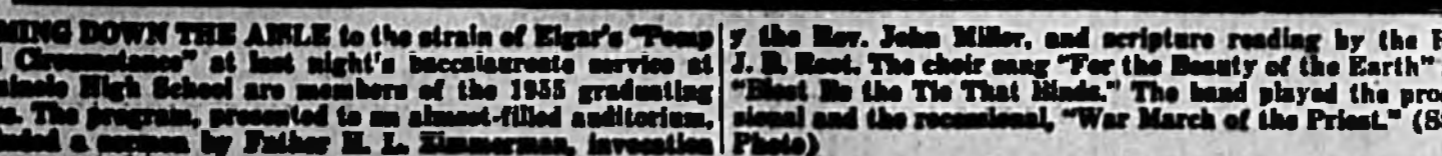
Flags Are Placed On Vets Graves

Mrs. F. E. Roumillat, chairman of the memorial committee of the Campbell-Losing Unit, 63 American Legion Auxiliary, assisted by Mrs. I. M. Leinhardt placed American flags on the 125 veterans' graves in the local cemetery Saturday.

This was in memory of the veterans in World War I, II and Korean conflict. Two flags were also placed at the entrance of the soldiers plots between two tall eucalyptus trees in memory of Frank Campbell and Arthur Losing along with the unknown soldier.

FORMATION CALLED
AMMAN, Jordan (AP)—King Hussein has called for formation of a new Jordanian government.

Hussein accepted Prime Minister Tewfik Abdul Huda's resignation last night and a requested former Vice Premier Said Mufli to form a new cabinet. The latter is expected to ask permission to call a general election.



COMING DOWN THE AISLE to the strains of Elgar's "Pomp and Circumstances" at last night's baccalaureate service at Seminole High School are members of the 1955 graduating class. The program, presented to an almost-filled auditorium, included a sermon by Father H. L. Zimmerman, invocation by the Rev. John Miller, and scripture reading by the Rev. J. B. Root. The choir sang "For the Beauty of the Earth" and "Hail to the Tie That Binds." The band played the processional and the recessional, "War March of the Priests." (Staff Photo)

A Heart For The Young

A novel type of philanthropic bequest has been left by Paul H. Dawson of Yellow Springs, Ohio. This is a trust fund of \$75,000, to help young couples buy their own homes.

It is hard to imagine a worthier cause. If any doctrine is firmly fixed in the minds of Americans, it is the value of home ownership. The Dawson bequest encourages it, and the idea is not copyrighted.

Heart Of The Matter

In New York lately a man won a reprieve. In 1941 he drove a get-away car that got away from a stupid and bloody, two-bit, told-up murder. The police picked him up, questioned him almost continuously for twenty-seven hours, held him incommunicado from his family, friends, or lawyer, ricked him with false witnesses and finally extorted a confession from him. In 1942 the man was sentenced to life imprisonment. Last week he was granted a new trial because of rights guaranteed under the Fourteenth Amendment.

Whatever his part was in the grimy and senseless murder, justice was not served by delivering this man to the public worn down, coerced, his will broken.

The Constitution is an old document in a young land. It was written by a group of men with few special talents. They were not all well-educated. They were not all professional men. They were men trying to guarantee for every man, whether he drives a get-away car, pulls a trigger, or is the victim or the widow who sheds the tears, the right to a fair hearing by his peers.

Constitutionality is of extreme importance. This is constitutionalism and more than that. It is a matter of the heart. At the heart of brutality is ignorance. At the heart of force is fear. At the heart of justice is freedom from both ignorance and fear.

The Sanford Herald

Published daily except Sunday and Monday
324 West First St.

Entered as second class matter October 27, 1922 at the Post Office of Sanford, Florida, under the Act of Congress of March 3, 1879.
FIRST CLASS PERMIT NO. 100
FACED AUTHORITY OF POSTAL SERVICE

Subscription Rates
By Carrier — 10¢ per week — One month — \$2.50
Three Months — \$7.50 Six Months — \$12.50
One Year — \$22.50
All other rates, orders of change, remittances and orders of advertisement for the purpose of relative rates will be charged for at regular advertising rates.

Approved National by General Advertising Service, Inc. 600 N. Michigan St. Detroit, Mich.

The Herald is a member of the Associated Press which is owned and operated by the members of the press in all the local news papers in this newspaper.

Page 2 Monday May 30, 1955

TODAY'S BIBLE VERSE

Seek ye the Lord while he may be found, call upon him while he is near.—Isa. 55:6—The Infinite has enriched and glorified countless lives. Do not miss your chance.

HAL BOYLE

Memorial Day Brings Out Life

NEW YORK (AP)—Curbstone reflections of a pavement flake:

On Memorial Day our buried dead come to life again in final postures that bloom with flags and flowers.

They live and walk and talk again as they did in days before, earth is bright again with their remembered presence. We see them once more in our hearts as we knew them in their mortal prime.

But Memorial Day differs from all our other holidays, because it holds so many varying meanings. To a child it is only a day off from school, and a feeling of bewilderment and awe. The strange trip to the cemetery, the subdued conversation of the grownups about people he has never known—these things confuse him. He is too new to the mystery of life to have even a groping realization of the mystery of death.

Memorial Day to most young adults is only a day off from work, a brief vacation from grind of duty. So, if they have known it at all, has touched them but distantly, and their memories of it are dim and vague. Their sense of loss is often small. What you don't remember will rarely stir you to emotion. To the elderly, Memorial Day is largely just another day. Every

day is Memorial Day when you're old.

It is middle-aged people — or those of any age freshly struck down with grief—who are most likely to be affected deeply by Memorial Day, who can be hurt or helped by it. They have the dead of three generations to remember—parents, friends, brothers and sisters, and perhaps lost children of their own.

But Memorial Day is hard on anyone who remains half-laughed by anguish, unreconciled to death, and clings stubbornly and alone to the memory of one he mourns. For him Memorial Day holds no pleasure, only the misery of a self-perpetuated torture.

All Memorial Day observances should be family, neighbor, or community gatherings. The memories of all who knew the loved dead should be shared. Only in this way do they truly live again as the full-statured people they really were.

No one owned them alone when they were alive, and no one should memory now they're gone. We and the dead are disservice if we individually seek to keep them as merely part of our own mental real estate, the pale prisoners of a single mind. This shows, not that we love them, but that we are still trying

Fleeing For Freedom

May 18th marked the official deadline for refugees passing from North Viet Nam to South Viet Nam. By the Geneva pledge the port of Haiphong was to be held open until then as free exit for Vietnamese evacuating the Communist-controlled North.

Almost a million people fled the Vietnam government of North Viet Nam. They fled with little more than the clothes on their backs with no food, with no human comforts. The past they have left has been violent. They are a people who have been harassed with a war that was fought in their streets, from their houses, and in their fields. They have known pillage and fire and death.

They have had to scrape hope and conviction from fragments of the past, from a time when life was not a series of deaths and deaths were not the tally of aggression. Deep within the human reservoir, untrampled by the ruthless press of a Communist peace, these million people have found the strength to leave what has been their own land for the flickering glimmer of hope elsewhere.

From Haiphong boats have ferried them to Saigon, dumping them there to find freedom for themselves. And Saigon's streets have filled with the dispossessed. Thousands with hungry mouths, naked and roofless, mill in restless throngs before the eyes of the new administrators of free Viet Nam's future.

Various American organizations have been trying to help these people with voluntary contributions. One of these is Operation Brotherhood of the International Rescue Committee, 62 West Forty-fifth street, New York 36, N. Y. From the resources of free people and free nations will always come help for those who would live in freedom. And every little bit helps.

But it is time Americans grasped the fact that what they are looking at is a great world movement—a world revolution against tyranny.

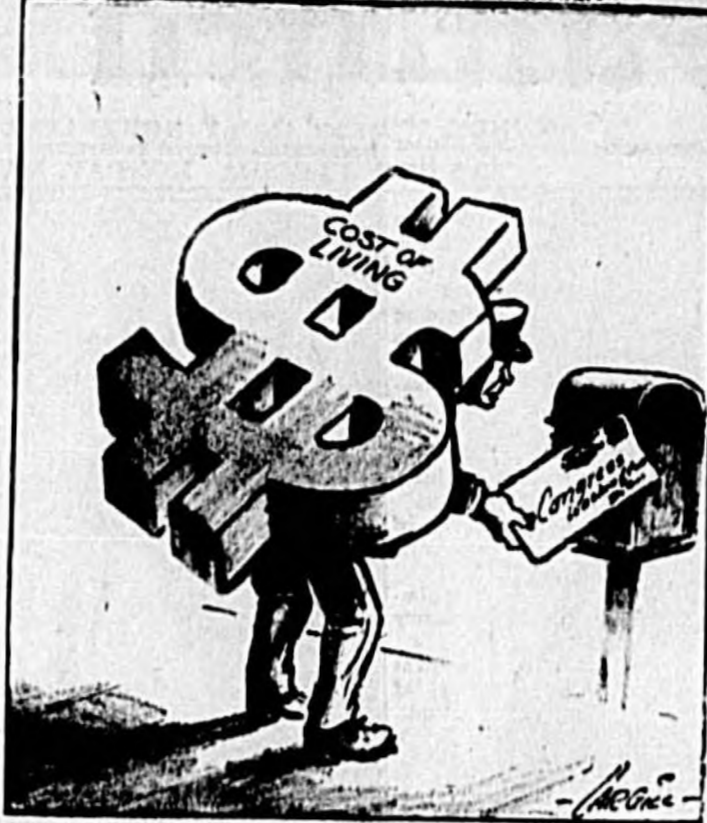
Twilight With Honor

The Senate has voted that all ex-presidents shall receive an allowance of \$25,000 annually, and their widows \$10,000. Thus the men whom their countrymen have honored above all others will not be forced to live in retirement on a meager income, nor resort to money-making methods unbecoming a former president.

While some ex-presidents such as Herbert Hoover, have had adequate means, others, such as Thomas Jefferson, have been reduced to dire straits. Jefferson was forced to sell his much-prized library to the nation, at a figure far below its true value. An ex-president, seeing his family reduced to penury might be induced to lend his name to questionable enterprises that would stain the good name of the nation. This has not happened but it is not desirable to make it possible by failure to provide for our former chief executive's old age.

The House and the President should speedily concur in the Senate action.

OVERBURDENED LETTER CARRIER



SAM DAWSON

Stockholders Get Glowing Views

NEW YORK (AP)—Rail stockholders are getting glowing pictures of their annual meetings—if they look back only one year or so for their comparisons. New York Central shareholders, meeting today in Albany, are being told by Robert R. Young of the gains over a year ago. Pennsylvania Railroad's President James M. Symes told stockholders this was the best year in the last 10 years.

Reports of better times have come recently from the head men of Illinois Central, Southern Railway, Nickel Plate, St. Louis-San Francisco and others. Gains over last year for railroads as a whole are terrific—earnings of the 126 top roads up 90 per cent; car loadings up 12 per cent; and prospects for even better gains ahead.

But when railroad men assay their position in the transportation world against the background of what it was 30 years ago they see a different picture. Back in the 20s the railroads carried more than three fourths of all freight between cities. Today they carry barely more than half. In those earlier days they toled most of the passengers. Buses and airplanes have siphoned away much of this business. Railroads complain that what is left is run at a loss.

Competitors have captured many of the new products of our expanding economy and most of the new traffic routes opened up by our geographically shifting population, the National Industrial Conference Board points out.

The results showed up bitterly for the railroads a year ago. Because so much of their freight

business is now in bulk commodities of low value per ton—such as coal, ore and coke—last year's setback in industrial activity hit the roads hard. This year the gains for the rails sprang in large part from the revival in the heavy industries. To aid the roads, the Presidential Advisory Committee on Transport Policy and Organization recommends broad relaxation of federal controls over interstate transportation.

General Treatment
General treatment of pinworm consists of frequent enemas of soap and water or salt and water to wash the invaded regions. Also keep your child's fingernails short. Pinworms frequently get under the nails and can be carried to his mouth or nose. Make him wash his hands thoroughly before eating and after going to the toilet. Have him sleep in cotton underpants and cotton gloves.

QUESTION AND ANSWER
F. T. R.: What is meant by a "piloid cyst"? Is it cancerous?
Answer: This is a condition, often present at birth, which occurs at the end of the spine. At first there may be a small swelling like a boil, which eventually breaks and drains, but leaves the area very sensitive. However, the infection does not heal like a boil, but keeps recurring. Operation is the only known means of treatment. The condition is not cancerous.

Com Cause Insomnia
Pinworms live in the upper part of the large intestine and occasionally are found in the female genital organs. Very rarely are they found in the nose and the ears. These small white worms cause intense itching around the rectum and frequently in the nose. Restlessness and insomnia can sometimes be blamed on pinworms, too.

The Air Force tests were conducted by Lt. Virgil M. Howie at Langley Field. Over a ten-day period, fifty-eight pinworm victims—whose ages ranged from 11 months to 33 years—were given piperazine. The drug was taken in liquid form in equal doses two or three times a day.

Tests Are Successful
The test proved the drug to be 84 per cent effective. Dr. Howie reports in a recent issue of the American Journal of Diseases of Children, falling in only nine cases. Five patients showed what appeared to be toxic symptoms while taking the preparation. These symptoms disappeared, however, when the treatment was stopped.

General Treatment
General treatment of pinworm consists of frequent enemas of soap and water or salt and water to wash the invaded regions. Also keep your child's fingernails short. Pinworms frequently get under the nails and can be carried to his mouth or nose. Make him wash his hands thoroughly before eating and after going to the toilet. Have him sleep in cotton underpants and cotton gloves.

QUESTION AND ANSWER
F. T. R.: What is meant by a "piloid cyst"? Is it cancerous?
Answer: This is a condition, often present at birth, which occurs at the end of the spine. At first there may be a small swelling like a boil, which eventually breaks and drains, but leaves the area very sensitive. However, the infection does not heal like a boil, but keeps recurring. Operation is the only known means of treatment. The condition is not cancerous.

Tests Are Successful
The test proved the drug to be 84 per cent effective. Dr. Howie reports in a recent issue of the American Journal of Diseases of Children, falling in only nine cases. Five patients showed what appeared to be toxic symptoms while taking the preparation. These symptoms disappeared, however, when the treatment was stopped.

General Treatment
General treatment of pinworm consists of frequent enemas of soap and water or salt and water to wash the invaded regions. Also keep your child's fingernails short. Pinworms frequently get under the nails and can be carried to his mouth or nose. Make him wash his hands thoroughly before eating and after going to the toilet. Have him sleep in cotton underpants and cotton gloves.

QUESTION AND ANSWER
F. T. R.: What is meant by a "piloid cyst"? Is it cancerous?
Answer: This is a condition, often present at birth, which occurs at the end of the spine. At first there may be a small swelling like a boil, which eventually breaks and drains, but leaves the area very sensitive. However, the infection does not heal like a boil, but keeps recurring. Operation is the only known means of treatment. The condition is not cancerous.

Tests Are Successful
The test proved the drug to be 84 per cent effective. Dr. Howie reports in a recent issue of the American Journal of Diseases of Children, falling in only nine cases. Five patients showed what appeared to be toxic symptoms while taking the preparation. These symptoms disappeared, however, when the treatment was stopped.

General Treatment
General treatment of pinworm consists of frequent enemas of soap and water or salt and water to wash the invaded regions. Also keep your child's fingernails short. Pinworms frequently get under the nails and can be carried to his mouth or nose. Make him wash his hands thoroughly before eating and after going to the toilet. Have him sleep in cotton underpants and cotton gloves.

QUESTION AND ANSWER
F. T. R.: What is meant by a "piloid cyst"? Is it cancerous?
Answer: This is a condition, often present at birth, which occurs at the end of the spine. At first there may be a small swelling like a boil, which eventually breaks and drains, but leaves the area very sensitive. However, the infection does not heal like a boil, but keeps recurring. Operation is the only known means of treatment. The condition is not cancerous.

Tests Are Successful
The test proved the drug to be 84 per cent effective. Dr. Howie reports in a recent issue of the American Journal of Diseases of Children, falling in only nine cases. Five patients showed what appeared to be toxic symptoms while taking the preparation. These symptoms disappeared, however, when the treatment was stopped.

General Treatment
General treatment of pinworm consists of frequent enemas of soap and water or salt and water to wash the invaded regions. Also keep your child's fingernails short. Pinworms frequently get under the nails and can be carried to his mouth or nose. Make him wash his hands thoroughly before eating and after going to the toilet. Have him sleep in cotton underpants and cotton gloves.

QUESTION AND ANSWER
F. T. R.: What is meant by a "piloid cyst"? Is it cancerous?
Answer: This is a condition, often present at birth, which occurs at the end of the spine. At first there may be a small swelling like a boil, which eventually breaks and drains, but leaves the area very sensitive. However, the infection does not heal like a boil, but keeps recurring. Operation is the only known means of treatment. The condition is not cancerous.

Tests Are Successful
The test proved the drug to be 84 per cent effective. Dr. Howie reports in a recent issue of the American Journal of Diseases of Children, falling in only nine cases. Five patients showed what appeared to be toxic symptoms while taking the preparation. These symptoms disappeared, however, when the treatment was stopped.

JAMES MARLOW

Bomber Production Boost Ordered

WASHINGTON (AP)—The Defense Department, after a two-weeks blasting by critics, now orders a boost in the production of long-range bombers. This could be a coincidence. Maybe it wasn't.

A little over a year and a half ago—Oct. 6, 1953—Secretary of Defense Wilson made a prediction about the Russians:

"It would be perhaps three years before they would have a reasonable number of bombs (H-bombs) and airplanes that could deliver them. I don't happen to think myself that this time factor is too important."

He said he thought American developments were about three years ahead of the Russians. A month ago the Russians displayed over Moscow swarms of planes, fighters and long-range bombers, some of new types. That touched off public warnings that the Reds were pulling abreast, if not ahead, of American air power.

Sen. Symington (D-Mo), who was secretary of the Air Force under President Truman, said Wilson had underestimated Soviet air strength. The Defense Department issued a statement saying the Russians were cutting into this country's lead in production of heavy, long-range and medium bombers.

Three days ago Wilson said this country is maintaining a "military capability superior" to that of Russia. He listed the kinds of new planes seen over Moscow this month. Yesterday the Air Force announced it is ordering a boost in the production of American's newest long-range jet bomber, the B52. What is the tally between the United States and Russia, in planes and their development?

Here is a boxscore put together from the information provided by Wilson and information put into the Congressional Record by Symington:

Long-range heavy bombers— For years the Russians had no long-range bomber. The United States stayed ahead with its long-ranger, the B36, of which it had plenty. But no more B36s are being built. They will be succeeded by the B52.

The B52, an eight-jet bomber, is not yet in operation in Air Force squadrons. The Air Force will have perhaps 15 or 20 of them by mid-summer. They have a speed of over 600 miles an hour, can range over 6,000 miles.

Over Moscow the Russians displayed 10 or more of their new long-range jet bombers, called Type 37, which Wilson himself said is comparable to the B52. It is said to have four jet engines and may be more powerful than the B52.

Medium bombers— The American B47, with six jet engines, can go long-range with refueling. About 1,500 have been built. The B52, with four jet engines, can go long-range with refueling. About 1,500 have been built.

Business is now in bulk commodities of low value per ton—such as coal, ore and coke—last year's setback in industrial activity hit the roads hard. This year the gains for the rails sprang in large part from the revival in the heavy industries. To aid the roads, the Presidential Advisory Committee on Transport Policy and Organization recommends broad relaxation of federal controls over interstate transportation.

Business is now in bulk commodities of low value per ton—such as coal, ore and coke—last year's setback in industrial activity hit the roads hard. This year the gains for the rails sprang in large part from the revival in the heavy industries. To aid the roads, the Presidential Advisory Committee on Transport Policy and Organization recommends broad relaxation of federal controls over interstate transportation.

Business is now in bulk commodities of low value per ton—such as coal, ore and coke—last year's setback in industrial activity hit the roads hard. This year the gains for the rails sprang in large part from the revival in the heavy industries. To aid the roads, the Presidential Advisory Committee on Transport Policy and Organization recommends broad relaxation of federal controls over interstate transportation.

Business is now in bulk commodities of low value per ton—such as coal, ore and coke—last year's setback in industrial activity hit the roads hard. This year the gains for the rails sprang in large part from the revival in the heavy industries. To aid the roads, the Presidential Advisory Committee on Transport Policy and Organization recommends broad relaxation of federal controls over interstate transportation.

Business is now in bulk commodities of low value per ton—such as coal, ore and coke—last year's setback in industrial activity hit the roads hard. This year the gains for the rails sprang in large part from the revival in the heavy industries. To aid the roads, the Presidential Advisory Committee on Transport Policy and Organization recommends broad relaxation of federal controls over interstate transportation.

Business is now in bulk commodities of low value per ton—such as coal, ore and coke—last year's setback in industrial activity hit the roads hard. This year the gains for the rails sprang in large part from the revival in the heavy industries. To aid the roads, the Presidential Advisory Committee on Transport Policy and Organization recommends broad relaxation of federal controls over interstate transportation.

Business is now in bulk commodities of low value per ton—such as coal, ore and coke—last year's setback in industrial activity hit the roads hard. This year the gains for the rails sprang in large part from the revival in the heavy industries. To aid the roads, the Presidential Advisory Committee on Transport Policy and Organization recommends broad relaxation of federal controls over interstate transportation.

Business is now in bulk commodities of low value per ton—such as coal, ore and coke—last year's setback in industrial activity hit the roads hard. This year the gains for the rails sprang in large part from the revival in the heavy industries. To aid the roads, the Presidential Advisory Committee on Transport Policy and Organization recommends broad relaxation of federal controls over interstate transportation.

Business is now in bulk commodities of low value per ton—such as coal, ore and coke—last year's setback in industrial activity hit the roads hard. This year the gains for the rails sprang in large part from the revival in the heavy industries. To aid the roads, the Presidential Advisory Committee on Transport Policy and Organization recommends broad relaxation of federal controls over interstate transportation.

Business is now in bulk commodities of low value per ton—such as coal, ore and coke—last year's setback in industrial activity hit the roads hard. This year the gains for the rails sprang in large part from the revival in the heavy industries. To aid the roads, the Presidential Advisory Committee on Transport Policy and Organization recommends broad relaxation of federal controls over interstate transportation.

Business is now in bulk commodities of low value per ton—such as coal, ore and coke—last year's setback in industrial activity hit the roads hard. This year the gains for the rails sprang in large part from the revival in the heavy industries. To aid the roads, the Presidential Advisory Committee on Transport Policy and Organization recommends broad relaxation of federal controls over interstate transportation.

Business is now in bulk commodities of low value per ton—such as coal, ore and coke—last year's setback in industrial activity hit the roads hard. This year the gains for the rails sprang in large part from the revival in the heavy industries. To aid the roads, the Presidential Advisory Committee on Transport Policy and Organization recommends broad relaxation of federal controls over interstate transportation.

Business is now in bulk commodities of low value per ton—such as coal, ore and coke—last year's setback in industrial activity hit the roads hard. This year the gains for the rails sprang in large part from the revival in the heavy industries. To aid the roads, the Presidential Advisory Committee on Transport Policy and Organization recommends broad relaxation of federal controls over interstate transportation.

Business is now in bulk commodities of low value per ton—such as coal, ore and coke—last year's setback in industrial activity hit the roads hard. This year the gains for the rails sprang in large part from the revival in the heavy industries. To aid the roads, the Presidential Advisory Committee on Transport Policy and Organization recommends broad relaxation of federal controls over interstate transportation.

Business is now in bulk commodities of low value per ton—such as coal, ore and coke—last year's setback in industrial activity hit the roads hard. This year the gains for the rails sprang in large part from the revival in the heavy industries. To aid the roads, the Presidential Advisory Committee on Transport Policy and Organization recommends broad relaxation of federal controls over interstate transportation.

Business is now in bulk commodities of low value per ton—such as coal, ore and coke—last year's setback in industrial activity hit the roads hard. This year the gains for the rails sprang in large part from the revival in the heavy industries. To aid the roads, the Presidential Advisory Committee on Transport Policy and Organization recommends broad relaxation of federal controls over interstate transportation.

Business is now in bulk commodities of low value per ton—such as coal, ore and coke—last year's setback in industrial activity hit the roads hard. This year the gains for the rails sprang in large part from the revival in the heavy industries. To aid the roads, the Presidential Advisory Committee on Transport Policy and Organization recommends broad relaxation of federal controls over interstate transportation.

Business is now in bulk commodities of low value per ton—such as coal, ore and coke—last year's setback in industrial activity hit the roads hard. This year the gains for the rails sprang in large part from the revival in the heavy industries. To aid the roads, the Presidential Advisory Committee on Transport Policy and Organization recommends broad relaxation of federal controls over interstate transportation.

Business is now in bulk commodities of low value per ton—such as coal, ore and coke—last year's setback in industrial activity hit the roads hard. This year the gains for the rails sprang in large part from the revival in the heavy industries. To aid the roads, the Presidential Advisory Committee on Transport Policy and Organization recommends broad relaxation of federal controls over interstate transportation.

Its Russian counterpart was shown over Moscow. It is called Type 39. It has two jets, six for the B47, but is described as larger and perhaps more powerful. Fifty Type 39s were flown over Moscow.

The Russians also showed a plane—called the 138—which is a turboprop swept-wing bomber. Besides acting as a bomber, it could be used for refueling other long-range planes, for reconnaissance. Wilson said the Russians showed at least nine.

The United States has no turboprop bombers but has some in production. Fighters—

As a counterpart of this country's day fighters—the F86 Sabre and the supersonic F100—the Russians have the MIG15 and MIG17. This country has thousands of the F86. The Russians are believed to have thousands of the MIG15.

The United States has turned out several F100s. It is now known how many MIG17s the Russians have.

But better than the F86 Sabre and F100, the United States is building the F101, a supersonic jet with a speed of 1,000 miles an hour. So far two of them have been built. The government has ordered 17.

Wilson said the Russians displayed more than 30 new supersonic fighters.

STARVED DEER
LANSING, Mich. (AP)—The Michigan Conservation Department reports that approximately 5,000 deer starved in the state's Lower Peninsula last winter. Harry Ruhl, chief of the game division, said this indicated the state's deer herd and food supply for deer are still out of balance.

STARVED DEER
LANSING, Mich. (AP)—The Michigan Conservation Department reports that approximately 5,000 deer starved in the state's Lower Peninsula last winter. Harry Ruhl, chief of the game division, said this indicated the state's deer herd and food supply for deer are still out of balance.

STARVED DEER
LANSING, Mich. (AP)—The Michigan Conservation Department reports that approximately 5,000 deer starved in the state's Lower Peninsula last winter. Harry Ruhl, chief of the game division, said this indicated the state's deer herd and food supply for deer are still out of balance.

STARVED DEER
LANSING, Mich. (AP)—The Michigan Conservation Department reports that approximately 5,000 deer starved in the state's Lower Peninsula last winter. Harry Ruhl, chief of the game division, said this indicated the state's deer herd and food supply for deer are still out of balance.

STARVED DEER
LANSING, Mich. (AP)—The Michigan Conservation Department reports that approximately 5,000 deer starved in the state's Lower Peninsula last winter. Harry Ruhl, chief of the game division, said this indicated the state's deer herd and food supply for deer are still out of balance.

STARVED DEER
LANSING, Mich. (AP)—The Michigan Conservation Department reports that approximately 5,000 deer starved in the state's Lower Peninsula last winter. Harry Ruhl, chief of the game division, said this indicated the state's deer herd and food supply for deer are still out of balance.

STARVED DEER
LANSING, Mich. (AP)—The Michigan Conservation Department reports that approximately 5,000 deer starved in the state's Lower Peninsula last winter. Harry Ruhl, chief of the game division, said this indicated the state's deer herd and food supply for deer are still out of balance.

STARVED DEER
LANSING, Mich. (AP)—The Michigan Conservation Department reports that approximately 5,000 deer starved in the state's Lower Peninsula last winter. Harry Ruhl, chief of the game division, said this indicated the state's deer herd and food supply for deer are still out of balance.

STARVED DEER
LANSING, Mich. (AP)—The Michigan Conservation Department reports that approximately 5,000 deer starved in the state's Lower Peninsula last winter. Harry Ruhl, chief of the game division, said this indicated the state's deer herd and food supply for deer are still out of balance.

STARVED DEER
LANSING, Mich. (AP)—The Michigan Conservation Department reports that approximately 5,000 deer starved in the state's Lower Peninsula last winter. Harry Ruhl, chief of the game division, said this indicated the state's deer herd and food supply for deer are still out of balance.

STARVED DEER
LANSING, Mich. (AP)—The Michigan Conservation Department reports that approximately 5,000 deer starved in the state's Lower Peninsula last winter. Harry Ruhl, chief of the game division, said this indicated the state's deer herd and food supply for deer are still out of balance.

STARVED DEER
LANSING, Mich. (AP)—The Michigan Conservation Department reports that approximately 5,000 deer starved in the state's Lower Peninsula last winter. Harry Ruhl, chief of the game division, said this indicated the state's deer herd and food supply for deer are still out of balance.

STARVED DEER
LANSING, Mich. (AP)—The Michigan Conservation Department reports that approximately 5,000 deer starved in the state's Lower Peninsula last winter. Harry Ruhl, chief of the game division, said this indicated the state's deer herd and food supply for deer are still out of balance.

STARVED DEER
LANSING, Mich. (AP)—The Michigan Conservation Department reports that approximately 5,000 deer starved in the state's Lower Peninsula last winter. Harry Ruhl, chief of the game division, said this indicated the state's deer herd and food supply for deer are still out of balance.

STARVED DEER
LANSING, Mich. (AP)—The Michigan Conservation Department reports that approximately 5,000 deer starved in the state's Lower Peninsula last winter. Harry Ruhl, chief of the game division, said this indicated the state's deer herd and food supply for deer are still out of balance.

STARVED DEER
LANSING, Mich. (AP)—The Michigan Conservation Department reports that approximately 5,000 deer starved in the state's Lower Peninsula last winter. Harry Ruhl, chief of the game division, said this indicated the state's deer herd and food supply for deer are still out of balance.

STARVED DEER
LANSING, Mich. (AP)—The Michigan Conservation Department reports that approximately 5,000 deer starved in the state's Lower Peninsula last winter. Harry Ruhl, chief of the game division, said this indicated the state's deer herd and food supply for deer are still out of balance.

STARVED DEER
LANSING, Mich. (AP)—The Michigan Conservation Department reports that approximately 5,000 deer starved in the state's Lower Peninsula last winter. Harry Ruhl, chief of the game division, said this indicated the state's deer herd and food supply for deer are still out of balance.

STARVED DEER
LANSING, Mich. (AP)—The Michigan Conservation Department reports that approximately 5,000 deer starved in the state's Lower Peninsula last winter. Harry Ruhl, chief of the game division, said this indicated the state's deer herd and food supply for deer are still out of balance.

STARVED DEER
LANSING, Mich. (AP)—The Michigan Conservation Department reports that approximately 5,000 deer starved in the state's Lower Peninsula last winter. Harry Ruhl, chief of the game division, said this indicated the state's deer herd and food supply for deer are still out of balance.

STARVED DEER
LANSING, Mich. (AP)—The Michigan Conservation Department reports that approximately 5,000 deer starved in the state's Lower Peninsula last winter. Harry Ruhl, chief of the game division, said this indicated the state's deer herd and food supply for deer are still out of balance.

STARVED DEER
LANSING, Mich. (AP)—The Michigan Conservation Department reports that approximately 5,000 deer starved in the state's Lower Peninsula last winter. Harry Ruhl, chief of the game division, said this indicated the state's deer herd and food supply for deer are still out of balance.

STARVED DEER
LANSING, Mich. (AP)—The Michigan Conservation Department reports that approximately 5,000 deer starved in the state's Lower Peninsula last winter. Harry Ruhl, chief of the game division, said this indicated the state's deer herd and food supply for deer are still out of balance.

STARVED DEER
LANSING, Mich. (AP)—The Michigan Conservation Department reports that approximately 5,000 deer starved in the state's Lower Peninsula last winter. Harry Ruhl, chief of the game division, said this indicated the state's deer herd and food supply for deer are still out of balance.

STARVED DEER
LANSING, Mich. (AP)—The Michigan Conservation Department reports that approximately 5,000 deer starved in the state's Lower Peninsula last winter. Harry Ruhl, chief of the game division, said this indicated the state's deer herd and food supply for deer are still out of balance.

STARVED DEER
LANSING, Mich. (AP)—The Michigan Conservation Department reports that approximately 5,000 deer starved in the state's Lower Peninsula last winter. Harry Ruhl, chief of the game division, said this indicated the state's deer herd and food supply for deer are still out of balance.

STARVED DEER
LANSING, Mich. (AP)—The Michigan Conservation Department reports that approximately 5,000 deer starved in the state's Lower Peninsula last winter. Harry Ruhl, chief of the game division, said this indicated the state's deer herd and food supply for deer are still out of balance.

STARVED DEER
LANSING, Mich. (AP)—The Michigan Conservation Department reports that approximately 5,000 deer starved in the state's Lower Peninsula last winter. Harry Ruhl, chief of the game division, said this indicated the state's deer herd and food supply for deer are still out of balance.

STARVED DEER
LANSING, Mich. (AP)—The Michigan Conservation Department reports that approximately 5,000 deer starved in the state's Lower Peninsula last winter. Harry Ruhl, chief of the game division, said this indicated the state's deer herd and food supply for deer are still out of balance.

STARVED DEER
LANSING, Mich. (AP)—The Michigan Conservation Department reports that approximately 5,000 deer starved in the state's Lower Peninsula last winter. Harry Ruhl, chief of the game division, said this indicated the state's deer herd and food supply for deer are still out of balance.

Social Events

After Baccalaureate Reception Held At Strickland Home Sunday

A reception was held after the baccalaureate service last night at the home of Mrs. M. R. Strickland, honoring the senior class. Hostesses for the event were Mrs. E. A. Monforton, Mrs. Joe Azzarello, Mrs. V. G. Hasty, Mrs. Eddie Nelson, Mrs. Gilda Chapman and Mrs. M. R. Strickland.

The daughters of the hostesses welcomed the guests as they entered the door. Each girl received a gardenia to wear on her shoulder. The rooms were beautifully decorated by Mrs. W. G. Fleming. A green and white theme was carried out through the entire house. Upon entering a large vase of green and white gladioli and fern and an arrangement of daisies were seen on the desk and table. In the dining room a lovely bowl of gladioli and gardenias on the dining room table. A similar arrangement was on the buffet. Baby's breath was entwined in both arrangements to set them off.

In the spacious living room spring flowers were placed in every appropriate spot. On the mantel was a clever arrangement of fern, gladioli and gardenias placed the entire length and centered with all-silhouetted graduates holding miniature diplomas. On the table and television, bowls of gladioli and gardenias were used.

On the porch, refreshments were served. Flowers again carried the class colors. In one corner an eastern urn bore white gladioli and on the center of a white cutwork cloth, covering the refreshment table, was a beautiful arrangement of mums, gladioli, baby's breath and fern. On each side were green burning tap-

Series Of Parties Given In Oviedo For '55 Seniors

Other Senior parties were the luncheon given Saturday by Mrs. B. F. Wheeler Jr., honoring four senior girls, Misses Leona Hart, Jean Brown, Ann Pierson and Nancy Myers, at the Skyline Restaurant, Orlando. These same four girls were also the guests of honor at a dinner party given by Mrs. John Courier Jr. at her home in Oviedo.

Johnny Jones and Leona Hart, both members of the senior class, were honored with luncheon at the Norwood Restaurant, New Smyrna Beach, by friends.

The boys of the senior class Johnny Jones, Charles Mentzer, Bruce Peairs, Andrew Aulin, Bryant Hickson and Kenneth Malcolm, Professor Paul Mikler, class teacher and sponsor, and Prof. Stewart Gatchel, principal, were the guests of honor at the luncheon Sunday at the home of Mr. and Mrs. J. B. Jones.

Mr. and Mrs. J. B. Jones will treat the senior girls, Ann Pierson, Leona Hart, Nancy Myers, Lois Rambo, Edith Dishman, Dolores Masters, Joan Brown, Isabel Conleton, Johnnie Mae Fottison, Rebekah Tuhy and Shirley Malcolm, to a theater party tonight. Thursday evening following graduation services the P-TA and room mothers are sponsoring a party and dance at the City Hall Memorial Building for the senior high school.

Friday the members of the senior class will enjoy a class party at Daytona Beach, supervised by Mrs. J. B. Jones Jr., and Mrs. J. L. Malcolm. Some of the mothers are hosts for the picnic lunch, while others will give the dinner party at a Daytona Beach restaurant that evening. Some of the class will remain overnight.

Professor Paul Mikler and Mrs. Mikler, class teacher and sponsor, and Prof. Lyle Lowry and Mrs. Lowry will be guests at the dinner party. Professor Lowry is the teacher to whom the seniors dedicated the annual this year. Professor and Mrs. Stewart Gatchel have been invited but may be unable to attend due to other school programs.

Oviedo Graduation Will Be Conducted In School Building

Graduation exercises for the Oviedo High School, 1955 graduating class will be held in the school auditorium at 8 p. m. Mr. Thomas Corbett, vice president and title officer of Central Title and Trust Company, will be the guest speaker.

Ushers and usherettes, chosen by members of the senior class, will be Lorena Mathers, Myron Willis, Pat Walker and Betty Millikan. Mrs. Helen Leinhart will play both the professional and recreational. Music will be furnished by the school glee club.

'Kiddie College' Presents Program Of Mother Goose

Mrs. H. B. McCall's Kindergarten "Kiddie College" at 2317 Melonville Ave. held its annual program Wednesday at 6 p. m.

Mother Goose characters were used as the theme of the program. Announcer and Mother Goose, Brenda Lamb; Humpty Dumpty, Edols Litton; Little Betty Blue, Susan Compton; Little Jack Horner, Mike Brown; Little Bo Peep, Melanie Hicks; Jack and Jill, Jimmy Ekern and Margie Goodspeed; Little Boy Blue, Bill Crapps; Little Miss Muffet, Jo Jennings; Wee Willie Winkle, Rickie Lyster; Mistress Mary, Melanie Hurt; Baa Baa Black Sheep, Davey Vane; Little Diddle Dumplin, Ira Abramson; There Was A Crooked Man, Brain Kersey; Jack Be Nimble, David Compton; Twinkle Twinkle Little Star, Jeff Cox; and Ole King Cole, Larry Rowland.

Singing and dancing made up the rest of the program with "School Days" by Ricky Laser and Melanie Hurt, "I Have A Kilty" Jo Jennings, and "My

Carol Loehelt Reveals Plans

Final wedding plans are being announced today of Carol Ann Loehelt, daughter of Mr. and Mrs. J. H. Loehelt, and James R. DeBrine, son of Mr. and Mrs. Willis DeBrine.

The event will take place in the First Methodist Church on June 4 at 8 p. m. with the Rev. Milton H. Wyatt officiating.

Those included in the wedding party are maid of honor, Miss Marcia Loehelt, sister of the bride; bridesmaids, Miss Rosemary Garner and Miss Ginger Jones.

Best man will be Donald Howard and usher-groomer, Gene Harineau, Buddy Maddox, William R. Jennings and Ronald Taylor.

Miss Joy Thornton, cousin of the bride, will be soloist and Mrs. Albert Hickson, organist.

A reception will be held immediately following the ceremony in McKinley Hall.

No invitations are being sent but all friends and relatives of the couple are invited to attend.

Elected Officers To Be Installed At Club Meeting

The newly elected officers of the Sanford Women's Club will be installed at the business luncheon meeting Wednesday. This will be a meeting for members only.

Yearly reports from the officers and departmental heads will be heard, and Mrs. F. T. Meriwether, acting president, will preside.

The following slate will be installed in an impressive ceremony: Mrs. Meriwether, president; Mrs. Joe Corley, first vice president; Mrs. William L. Kirk, third vice president; Mrs. John L. Lee, recording secretary; Mrs. Broughton Watkins, corresponding secretary; Mrs. Willis Peacock, American Home Chairman; Mrs. J. C. Moore, Civic Chairman; Mrs. J. A. Young, Social Chairman; and Mrs. George Wells, Fine Arts Chairman.

Hostesses are Mrs. Douglas Stenstrom, Mrs. James Huff, Mrs. G. A. Sweeney, Mrs. Lamar Echols and the Misses Adelaide Conte and Alice Cooper. Reservations must be made by Tuesday noon with Mrs. R. T. Warren, 936-M.

The board of managers will meet Tuesday morning at 9:30.

Like the flavor of anchovies? Chop some anchovy fillets and add them to a cream sauce along with a little lemon juice. Serve the sauce over fish fillets or steaks and garnish with minced parsley and strips of canned pimiento.

Doris Hart of Coral Gables, Fla., was runner-up for the U. S. women's tennis crown five times before winning in 1954.

"Little Doe" by Bill Crapps featured as special numbers.

A Maypole Dance and the Brahms Lullaby along with a prayer closed the program. Refreshments of punch and cookies were served to the many parents and friends present. Accompanist was Mrs. J. A. Young, Margie Goodspeed's grandmother.



MISS ANN RABORN

Late Summer Rites Planned By Ann Raborn, William Stephens

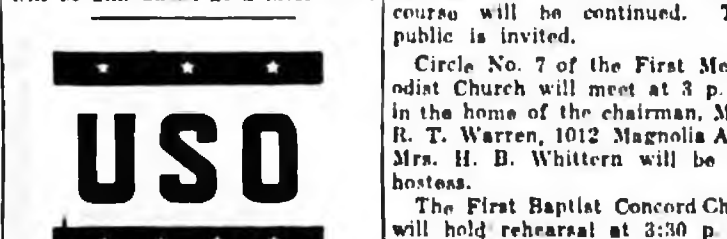
Mr. and Mrs. Marion Lamar Raborn Sr. announce today the engagement of their daughter, Ann Lynn, to William Francis Stephens, son of Mr. and Mrs. Walter Maxam Stephens of Pensacola.

Miss Raborn is a native of Sanford. She attended Sanford schools and graduate from Seminole High School with the class of 1953.

Following her graduation from high school, she attended Florida State University in Tallahassee where she was a member of the Delta Delta Delta social sorority.

Mr. Stephens was born in Nashville, Tenn., coming to Pensacola with his family at an early age. He graduated from Pensacola High School in 1952. He is now a student at Florida State University where he is studying commercial art and is a member of Sigma Nu social fraternity.

The wedding will be an event of late summer. Further plans will be announced at a later date.



Mrs. Harold H. Kastner, program chairman of the USO, entertained the service men and junior hostesses at Eoghanviola Kennels, Sunday afternoon. Refreshments were served the entire day.

Swimming and boating in Twin Lake were enjoyed by all in addition to dancing on the patio. Those present were H. B. Taylor, Milford, Del.; Frank A. Tambony, Long Island, N. Y.; J. L. Alexander, Lamesa, Texas; Gilbert Herman, Jayton, Texas; Jeanette Cleveland, Sue Vance.

Paulette Cason, Tom Norris, Sam Herman, USNAS; John Miller, NAAS, Rebecca Cain, Mary Frances Henderson, Pat Cassube, Don Taylor, New Jersey; Carl R. Croys G. Blass, New York; John L. Jweas, along with the hostess.

Robert Cleveland, Donald Schroeder, Brooklyn; Margaret Von Herbulis, Mary Ann Michele, Charles M. Hobbs, James L. L. Carthy, Dorchester, Mass.; Ramie Ramirez, Philippines; Gerald Hompland, Kenneth L. Bethke, New Haven, Conn.; Gena R. Eckler, Covington, Ky.; Joe A. Gamba, San Antonio, Texas; William Butler, Hakensark, N. J.; Bob Markovitz, Buffalo, N. Y.; Joe Romano, Newark, N. J.; Mr. and Mrs. George Cook; Frank R. Hoffmann, N. Y.; Eddie Lee, Elliott, Maryland; Robert Ray Mullins, Jenkins, Ky.; Leo L. Heron, Boston, Mass.; Bett, Michela, John M. Harter, Monessen, Pa.; Buddy Ballows, Trenton, N. J.; J. E. Mady, Hornell, N. Y.; Bonifaro Palm, San Antonio, Cavite; Steve Wass, Sterling, Ill.; Dudley Belton, Hills, Tenn.; and Richard F. Krittlow.

Savory Snack: Spread split hamburger buns with smoked cheese and add sprinkle of garlic powder. Broil the buns until the cheese is bubbly while you are cooking hamburger patties with which to top them — one patty for each half cheese-spread bun. Serve with a crisp vegetable relish and lots of hot coffee.

Pruns scored 367 points in nine games, winning them all.

Mrs. Wynn Has Afternoon Party For Miss Bryan

Miss Betty Bryan was recently honored at an afternoon party given at the home of Mrs. Clarice L. Wynn on Grandview Ave.

After the guests had arrived they were presented with miniature diplomas which contained handkerchiefs as favors of the occasion. Miss Bryan's gift from the host was attached to her diploma.

The rooms of the home were tastefully decorated with floral arrangements of white flowers and greenery to carry out the class colors of green and white. Magnolia blossoms were placed on antique tables and in a crystal coupe which are family heirlooms. The dining room table was overlaid with an imported cutwork cloth and contained a centerpiece of white flowers including daisies, chrysanthemums and gladioli with a diploma laid among the flowers. Crystal candleholders on either side contained daisies, green burning candles.

Those invited to be with Miss Bryan were her mother, Mrs. J. N. Azzarello, Mrs. Boyd Coleman, Mrs. C. E. Chorpensing Sr. and Mrs. C. E. Chorpensing Jr. also the following class mates, Sandra and Sonya Monforton, Glenn Eugeyston, Marjane Strickland, Jean and Joan Wilke.

Minnie Lee Metts, Dorothy Wade, Rochelle Eubanks, Marilyn Calhoun, Jerry Wilkinson, Barbara Lowe, Barbara Brown, Helen Alexander, Shirley Tyre, Terrell Jean Nelson, Yvonne Cullen, Mary Ann Wright, Mary Ann Kay, Jean Kennedy, Helen Lindsey, and Case Stubbings.

THE SANFORD HERALD Mon. May 30, 1955 Page 1

Personals

Mrs. J. R. Dougherty and daughter, Kathy of Rye, N. Y., arrived Sunday to visit with her parents, Mr. and Mrs. W. J. Morrison at their home on 706 Palmetto Ave.

There will be a board meeting of the Sanford Women's Club at 9:30 a. m.

Winford David Hester, who is in Korea, has been promoted to Corporal. His mother is Mrs. B. E. Power formerly of Sanford.

Friends of Miss Barbara Rosler are sorry to hear that she is still receiving treatment in the Fernald Laughton Memorial Hospital.

Friends of Russell McKinney are sorry to hear that he is confined to the Florida Sanatorium.

Mr. and Mrs. Harold H. Kastner left Sunday night for Gainesville, where Mrs. Kastner's son, Eoghan Kelly, architectural student at the University of Florida, will join the Kastner's and drive to Tallahassee to attend the graduation of Mr. Kastner's son, Harold H. Kastner Jr.

The Michigan conservation department will release more than two million trout in the state's lakes and streams this season.

Hair hard to wave?



get a Helene Curtis Heavenly Professional Permanent (for soft, dry or normal hair)

There is Helene Curtis' fabulous new super-conditioning permanent with both an amazing new type DEEP waving lotion and a new type "Super-seal" neutralizer — the combination that seals in soft, deep, lasting waves of ethereal beauty, regardless of the condition of your hair. See how beautiful your hair can be! Phone your beautician for a Heavenly appointment today.

from \$10

EVA BESS BEAUTY SHOP

PHONE 563

Ritz Theatre

NOW SHOWING ALL THE GUYS ALL THE GIRLS... ALL THE GLORY OF Battle Cry

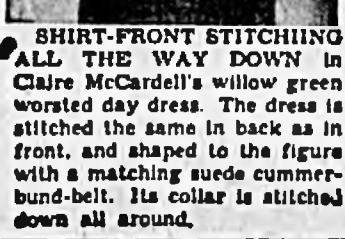


WARNER BROS. PRESENT IN CINEMASCOPE WARNERCOLOR STEREOPHONIC SOUND

VAN ALDO MONA HEFLIN - RAY - FREEMAN HANFLEY - JAMES RAYMOND OLSON - WHITMORE - MASSEY TAB MALONEY ANNE HUNTER - MALONE - FRANCIS

LEON MURIS - RAJUL WALSH

FEATURE TIME 1:00 - 3:10 - 6:30 9:30



SHIRT-FRONT STITCHING ALL THE WAY DOWN in Claire McCordell's willow green worsted day dress. The dress is stitched the same in back as in front, and shaped to the figure with a matching suede cummerbund-belt. Its collar is stitched down all around.

INLAND RIDE-IN THEATRE LAST TIME TONIGHT STARTS 7:35

DESTROY

PLUS

CRULL SEA

CARTOON - NEWS



DID WE HAVE FUN. The annual Junior High School dance was held Saturday night in the Yacht Club from 8 to 11 p. m. The room was beautiful decorated and dancing was enjoyed by the students. (Photo by Jackson)

TV NOTEBOOK

By BOB BENNETT

Most TV-owners have had a slight acquaintance with an integral part of their set; the picture tube. Other than the fact that it is a pretty expensive item, the average person little appreciates what a great piece of electronic engineering it represents.

A picture tube actually is little more than a conical glass bulb with a phosphor screen on the inside of the bulb face. In the neck of the tube is the electron "gun" which directs an electron beam at the screen to activate it and thereby produce the transmitted image.

The metal components of the electron gun, among them magnets no larger than a pencil eraser, and transformer wire finer than the hair on your head, require constant fine-precision inspection during assembly. It is the constant attention to detail that makes the manufacture of picture tubes a delicate, exacting and rather costly undertaking. However, it is this carefully controlled method of manufacture which pays off to the buyer in terms of sharp, clear viewing and longer life for the tube. Speaking of clear viewing, why don't you stop in BOB BENNETT'S TV and rest your eyes on the new DUMONT, which we feature, and let us demonstrate to you why it is the finest set you can put in your home? We also have the finest, top-of-the-line service and repair facilities: so if you are having trouble with your present set, call BOB BENNETT'S TV 590 West 27th St.; Phone 1672-XL.

Year Books Given To Club Members At Recent Meeting

The Past Noble Grand's Club of the Seminola Rebekah Lodge met with Mrs. E. H. Squires recently.

Mrs. J. Brodie Williams, president, presided over the meeting. It was announced that a projector screen had been ordered for the Lodge. The market basket will be started at the June meeting. The new "Year Books" were distributed and it was planned to send gifts and cards to several members.

Following the business meeting an interesting program was given by Mrs. H. L. Moore on "Mother's Day". She presented two lovely poems and a reading "The Little Mother".

Delicious refreshments were served to about 14 members.

Seniors Have Party

Mrs. Harold H. Kastner honored the following seniors with swimming and dancing party at Eoghanviola Kennels, Twin Lake on Sunday. Rebecca Cain, Mary Frances Henderson and Tom Norris.

A fountain pen was given to each senior, with a graduation card wishing them good luck and success. Many guests were present.

UCLA's 1954 grid team, PCC champions was the highest scoring outfit in the school's history. The

Seniors Have Party

Mrs. Harold H. Kastner honored the following seniors with swimming and dancing party at Eoghanviola Kennels, Twin Lake on Sunday. Rebecca Cain, Mary Frances Henderson and Tom Norris.

A fountain pen was given to each senior, with a graduation card wishing them good luck and success. Many guests were present.

UCLA's 1954 grid team, PCC champions was the highest scoring outfit in the school's history. The

ANNOUNCING: SOMETHING NEW IN SANFORD Simplified Sewing School EXCLUSIVELY AT GARRETT'S SEWING CENTER

Call 1422 For Information and Reservation

For The Graduate!



Evans Slippers

Evans Slippers are so smooth, flexible, and soft, they make floors feel like the pine needle and moss carpet of the deep woods. We have several good styles.

Your guide to the best in Slippers Other Styles 5.95 to 7.95

B.L. Perkins and SON Correct Men's Wear

Course Bug Dad; Confused

Dad has been bitten by the course bug, life often becomes complicated around the home workshop.

NIGHT IT IS NORFOLK, Va. (AP)— If a survey made by the Norfolk Tars of the Class B Piedmont League is any indication, baseball fans prefer to watch the national pastime under the lights.

Tar General Manager Bill Herring sent out a questionnaire, received 236 answers. Only 37 said they preferred day baseball over night baseball.

A total of 287 said they favored an 8 p. m. starting time. The rest indicated they'd like to see the games start a half hour earlier.

NOT SO FOXY ST. CLAIRSVILLE, O. (AP)— When a fox tried to attack John Paglalunga in his garden he ran to a nearby house and got a shotgun. Upon returning, he found the fox in the same spot, still in a belligerent mood.

As an added fillip to Dad's pride, you might put a small monogram on the cigarette pocket of his apron, just so he'll be sure of getting it back from the rest of the family.



CITY COMMISSIONERS have presented an award to James A. Wright for his active part in making French Ave. a reality.

the citizens of Sanford and materially aid in the development and progress of our community.

Flash Gordon comic strip panels with dialogue bubbles and illustrations of characters in a futuristic setting.

Legal Notice

INVITATION FOR BIDS The Seminole County Board of Public Instruction will receive bids for the furnishing of all labor, materials, equipment, and services required for the construction of Additional and Alterations to the Sanford High School at their office in the Seminole County Court House at Sanford, Florida.

IN THE COURT OF THE COUNTY OF SEMINOLE, FLORIDA, IN PROBATE. IN RE: ESTATE OF B. F. STEVENS. Notice to All Creditors and Persons Having Claims or Demands Against Said Estate.

NOTICE TO APPEAR THE STATE OF FLORIDA vs. MILDRED JUNE WATTS, whose residence is Prescott, Arizona. A sworn complaint having been filed against you in the Circuit Court in and for Seminole County, Florida, charging you with the crime of perjury.

Legal Notice NOTICE TO DEFEND You, William A. Shaw, defendant herein, are hereby notified that suit in divorce has been brought against you by your wife, Myrtle Elmer Plattin in the Circuit Court, Ninth Circuit, Seminole County, Florida, at Sanford, Florida.

CARDS WERE OVERHAULED ST. LOUIS, Mo. (AP)— The Cardinals' pitching staff has had an overhaul job. Only two hurlers who started the 1934 season with the Redbirds are still with the club.



A COMBINATION of beauty and brains is Alva Matthews (above) who will be the only woman student to be graduated from the School of Engineering at Columbia University, New York.

NEW SERVICE WASHINGTON (AP)— Beginning Tuesday, the Weather Bureau will forecast what areas would be affected by atomic fallout in case of nuclear attack on major target cities.

CALL — COMMUNICATION Sanford Lodge No. 62 F&M Wednesday, June 1—5 P. M. Supper 6:30 P. M. Second Section— 7:30 P. M. All Master Masons are Cordially Invited. A. F. Hammy, W. M. F. L. Miller, Sec.

SAVING IN COST Yes! Dividends from 15-35% on Fire-Wind-Homeowners' Insurance BOYD-WALLACE YOUR MUTUAL INSURANCE FRIEND SINCE 1885 114 S. Palmetto Ave. Sanford, Fla.

MIMEOGRAPH PRINTING — TYPING CREDIT INVESTIGATIONS MADE ANYWHERE IN UNITED STATES OR FOREIGN COUNTRIES CREDIT BUREAU OF SANFORD TELEPHONES 100 and 1077 Room 404 Sanford Atlantic National Bank Building

HAVE YOUR LAWN MOWED and edged with gasoline edge by Francis Perold. Phone 1622-X-M or 184-W.

Advertisement for Hanson Shoe Shop, featuring an illustration of a shoe and text: 'FOR THE BEST IN BOOTS SEE OUR DISPLAY OF... HANSON SHOE SHOP 221 S. FIRST ST.'

Advertisement for Strickland-Morrison, Inc., featuring the text: 'We Earned the FORD FOUR LETTER AWARD FMSE An Outstanding Ford Dealership in 1934 STRICKLAND-MORRISON, INC. 308 E. 1st St. Ph. 200'

Advertisement for Farrell's Arcade Package Store, featuring the text: 'O. D. Farrell 310 E. First For 30 years this store has consistently observed the following hours! Week days 9 a. m. to 8:15 p. m. Saturdays 9 a. m. to 7:30 p. m. Closed from 7:00 p. m. Saturday until 9 a. m. Mon. FARRELL'S Arcade Package STORE'

Advertisement for Hill Lumber & Supply Yard, featuring an illustration of a woman and text: 'COLOR CONDITION Your Home for Lasting Beauty... MATCHING COLORS for Walls and Woodwork... HILL LUMBER & SUPPLY YARD 213 W. Third St. DUPOIN PAINTS'

Large advertisement for Foodmart, featuring various product prices and the store name: 'WOW! ANOTHER BIG WEEK OF ANNIVERSARY BARGAINS... TIDE 19c... BISCUIT 19c... POT PIE 99c... MAYONNAISE 35c... CAULIFLOWER 10c... BACON 39c... ROUND STEAK 59c... SHERBERT 35c... CLOROX 17c... BABY FOOD 29c... KIDNEY BEANS 25c... TEA BAGS 65c... CRACKERS 33c... TOILET TISSUE 41c... FOODMART PARK AVE. AT 25th ST. Quantity Rights Reserved'

Tell Her It's MURDER

CHAPTER TWENTY-THREE

ANDRUS was down on the walk a couple of yards from the steep steps when he all but ran into Barry Lofting. It disconcerted him. How long had Lofting been around, how much had he heard, second and why was he on foot?

Andrus asked, "Where's your car?" Lofting said it was over at the inn. "Some storm. I was afraid I'd get stuck. I'm going to stay at the inn for the week and anyhow." He made a movement to pass.

Andrus said, "There's no use your going into the house now; Susan's going to bed with a headache, and Regina feels miserable and doesn't want to see anyone. Come on back to the inn with me and I'll buy you a drink and give you the latest on our friend, Mr. Trout." The two men moved off into the storm.

Later that night David Redgate was shot.

The medical examiner, Parr, was the only other doctor who lived on the Hill. Parr's telephone rang at shortly after 11 o'clock. It was Amy Redgate, crying out in an anguished voice that she had just found her brother lying in a pool of blood and she couldn't get a pulse. "Hurry, doctor, hurry," Parr called the police, and grabbed a bag.

Redgate was sprawled on the floor of his study unconscious. Amy Redgate knelt beside him, tears channeling furrows in her weather-beaten cheeks. After a quick examination Parr was able to reassure her. Redgate wasn't dead, or in any immediate danger of dying. There was what appeared to be a gunshot wound in the right thigh.

The police arrived a few minutes later. The doctor was lifted to a bed in the surgery and, with Amy helping him, Parr went to work. So did officers Dupasse and Baker. Todhunter, who had drifted in with them, hovered on the sidelines.

Half an hour later they had the picture. Redgate had been shot through the open study window with a .22-caliber rifle. No attempt had been made to conceal or carry off the weapon. It was lying in snow-covered bushes close to the window where it had been flung. The rifle belonged to the Redgates. It had hung, with another rifle and two shotguns, on the wall of the little corridor leading to the doctor's waiting room.

Once Amy Redgate knew the brother she adored wasn't going to die, she tried to pull herself together. She said that at around 9 that night she had started down for the rental library on Charles street and had a blowout. There was no garage anywhere near and no phone. A passing motorist had finally helped her put the spare on, but instead of being out half an hour, she'd been away more like two.

Both the Redgates went hunting every year. It was the one vacation the doctor took. "We thought we might be able to get away soon, maybe by the eighth," Amy had had the guns apart and cleaned them earlier in the week. They weren't

loaded, of course, but the ammunition for them was in a carton on the chest beneath which they hung, ready for packing. The door to Redgate's professional quarters in the east wing was never locked until late. Someone had come in, taken the rifle down, slipped bullets into it, and then gone outside to the open window and pulled the trigger.

There were no footprints, but there would be. Todhunter made a footprint in his own and timed it; in exactly eight minutes it was completely covered with fresh snow.

David Redgate regained consciousness; he was exhausted from loss of blood and shock but able to talk. He knew precisely when he had been shot. He had come in at around half past 10 and after putting his bag away had gone into the study to read some new stuff on anti-biotics. Before he had settled down he had opened the south window, as the room was close, and looked at the clock. The time was 10:40. It was as he was taking the pamphlets he wanted from the bookcase shelf that he had been shot. "Item of interest," he said drily. "A bullet feels like a blow from a fist."

The doctor couldn't think of any reason why anyone should have tried to kill him. He had no angry or disgruntled patients. His evening? After dinner he had worked for a while on a paper he was doing and at shortly before 9 he had gone over to the Wolf Hill Inn in response to a call from Regina Pelham's ex-husband, Henry Trout. He found Trout in bad shape, jittery and complaining of his heart. He was going back to New York that night and wanted something to put him on his snow. Redgate said, "I wasn't his heart. It was alcohol, and plenty of it. I advised him to lay off it for a while and left him some bromides."

Henry Trout was the last person the doctor had seen. Dupasse said, "You had no trouble with him, did you?" Redgate said, "Trout, doctor? I mean, sometimes drunks—"

Redgate said quickly and curtly, "None."

Todhunter slipped away and used the doctor's phone. Henry Trout had already left the Wolf Hill Inn. He had paid his bill after dinner, which had been served in his room at 7, but no one knew what time he went, except that it was before 10 o'clock; the chambermaid had done the room over then.

Todhunter hurried to the Pelham house. It was after 12 but there were lights on the first floor. He climbed the steep steps to the porch and rang the bell. A long wait, then a voice called, "Who is it?"

The voice was Regina Pelham's. Todhunter gave his name and Mrs. Pelham opened the door and let him in. He shook snow from his hat and coat in the vestibule. Hall and living room were empty. There was someone in the kitchen. China rattled distantly.

Todhunter said, "Is Mr. Trout here, Mrs. Pelham?"

"Henry? Her fine eyes opened wide. "Why do you ask?"

Todhunter said in his murmuring voice, "Dr. Redgate was shot a little while ago."

Gripping a chair back, Regina gasped, "Is Dave—dead?"

Before Todhunter could speak, they were joined by Susan Dwight, who came running down the stairs, and Mrs. Cassery coming in from the kitchen. Both women were in robes and slippers. Todhunter told them what had happened. The effect on Susan Dwight and the nurse was almost as strong as on Regina Pelham—in fact, if anything, the nurse was the hardest hit. "No," she gasped, falling back into a chair, "not the doctor." Susan asked, "Is Dave badly hurt, Mr. Todhunter?"

"Badly enough," Todhunter said, "but not fatally. Now, about Mr. Trout—"

Regina Pelham said, "Henry went back to New York. He told me this afternoon that he was going, and said good-by. I believe he's leaving for the west coast tomorrow or the next day." No, he hadn't given any forwarding address, said her husband.

"Were you home all evening, Mrs. Pelham?"

"Yes."

The answer was even, unhesitating; she betrayed herself with a hand half raised to her hair. Todhunter had already noticed it. Damp tendrils curling around her ears broke its smooth sweep. She continued almost without a break, "If you mean by home, the grounds outside, I like snow and I walked about in it for a while, around the lawns."

Without comment, Todhunter turned to the nurse. "Mrs. Cassery, were you out—we're asking these questions because we're anxious to find someone who might have seen the man who shot the doctor."

Mrs. Cassery said, "Oh, yes, I was out. I always go out before I go to bed, rain or shine winter or summer. I did hear something. I went around the block, and as I was turning out of Highland place, that's the doctor's street, into Evergreen, I heard what sounded like a shot. I thought it was a car backing up."

She was either very bold or she was telling the truth. She placed the time at 30 to 11, and put herself practically on the spot.

Todhunter asked Regina to let him know if and when she heard from Henry Trout and said good-night.

Back at the inn which he just barely made, as the snow was thigh deep in places, he went to a telephone booth in the darkened lobby and called the inspector.

"Redgate," McKee exclaimed, and listened without further interruption until Todhunter finished.

"No taxi?" he asked. Todhunter said Trout wasn't called one from the inn. "Maybe he got a lift on the Hill, inspector." McKee said yes. "We'll try and get a line on Trout if he did come down to New York. You can't do anything more there tonight. Go to bed and get some sleep. You may be going to need it. I'll join you tomorrow." (To Be Continued.)



CHARLES E. WILSON, Secretary of Defense, assures reporters at a Pentagon press conference that the United States is "maintaining a military capability superior to that of any potential enemy." The interview followed recent Democratic demands for clarification of the country's air power as compared to that of Russia.

KIDS GET FISHING BREAK

WESTFIED, N. J. (AP)—Local cops should have no trouble enforcing a "no fishing by adults" ordinance in Lake Mindowaskin. The lake is across the street from the police station.

The ordinance barring the youngsters from the lake was adopted when the city fathers discovered the small fry had been shoudered away from vantage points around the small body of water.

American League umpire Ed Rommel was once a star pitcher for the Philadelphia Athletics. Twice he won more than 20 games for the A's.

MICKEY MOUSE



Artist Plans Floating Building

GRAND JUNCTION, Colo.—Want to Work in a building that floats and follows the sun? Architect Jared Morse plans to erect a six-story office building that does both, but his purpose isn't to entertain the office help.

He wants to take advantage of the sun to cut down on air conditioning bills in the summer and heating costs in the winter.

The architect, who has constructed an operating scale model, says the building will be 72 feet high, 87 1/2 feet long and 30 feet thick. It is to provide 36,000 square feet of rental space.

In shape, it will resemble half of an oval cake, turned on edge with the outer rim representing the building's roof.

It is to be built of lightweight materials, weighing 2,400,000 pounds, and will barely float in a shallow pool of water.

A motor is to rotate the building 90 degrees, or one-quarter of a circle, twice a day. This is designed to keep the flat side of the building turned to the sun in winter, while presenting little except the curving roof to the sun in summer.

This should mean a difference, says Morse, of about 20 degrees in interior temperatures.

At ground level, the base of the building is to be a semicircular platform which will maintain constant contact with the sidewalk as the structure turns.

The rate of rotation would be very slow, with the outer edge of the platform moving at three-tenths of an inch per minute.

The full 90-degree rotation would take eight hours. For another eight hours the building would remain stationary, permitting owners to be reached from trucks. Then, in another eight hours, it would turn to its original position in order to again follow the sun.

It would begin summer days facing south and west, turning on its axis to follow the sun's path in the afternoon and evening.

One of the building's main features would be its "cracker barrel" contact with the sidewalk as it turns.

It would be a "cracker barrel" contact, says Morse, "so that it would be like a cracker barrel rolling on its edge."

As for the rotation, Morse says, "I don't know how to do it, but I know it can be done."

Arizona Treasurer Runs His Offices From Cigar Box

PHOENIX, Ariz. (AP)—The treasurer of Arizona runs his office from a cigar box.

Conducting a reporter on a tour through his office in the state's antiquated Capitol, Treasurer E. T. Williams Jr. yanked open a drawer and pointed to a box bulging with bills, \$3,000 worth of them, to be exact.

"That," he sighed, "is how we have to handle the state's money."

Next to the box was a fat paper envelope. "There you see \$40,000 worth of bond coupon clippings sitting around like worthless scraps of paper."

"This office is being run like an old-fashioned country store, even to the proverbial 'cracker barrel,'" Williams said. "We still have the same accommodations generally—or lack of accommodations—for proper handling and safekeeping of money that this office had in territorial days."

Arizona became a state in 1912. A bill to replace the present Capitol died in the last Legislature. Plans for a modernized treasurer's office died with it. Williams complains his office doesn't even have a cashier's cage to handle the half-million-dollar business it does every day.

He pointed to his "cracker barrel" box. Once it was locked for the night, he said, "The only way to get the money out is to go to the cashier's cage. Williams was obliged to use it as a 'cracker barrel' for the night."

"It's not a cracker barrel," he said. "As for the rotation, Morse says, 'I don't know how to do it, but I know it can be done.'"

Conservation News

By BEN WIGGINS

Soil Conservationist, USDA

The regular monthly meeting was held Wednesday night in the work unit office by the local board of supervisors. The meeting was called to order by chairman Bonner Carter and the minutes of the previous meeting were read by secretary J. D. Martin. A lengthy discussion was held on the following topics: The possibility of obtaining a five or ten acre block of tiled land for use as a district nursery. The new District mower which is now available to the local farmers and which is now located at the Sanford Tractor & Implement Company on West 1st Street. And Soil Steward Sunday which was observed by many churches over the Nation on May 15.

The following activities were covered in the report to the local supervisors: Seven well sites were located for conservators in the District this month. These well sites are determined by making a topographical survey of an area, by the local technicians of the Soil Conservation Service, and will be used as the source of supplemental water for irrigating pastures and crops during dry seasons. Several pastures were determined to be severely damaged from the lack of adequate moisture during March and April. Many of the crops grown, especially the ones planted on some of the marginal land, were also badly damaged.

Six local conservators from other areas were out with the following supervisors: W. H. Borden, James F. Lohan, A. V. Brown, A. C. Sawyer, H. E. T. O'Connell, and E. A. Colburn.

Seven private owners had been contacted by the local conservators regarding their land.

Artist Plans Floating Building

Arizona Treasurer Runs His Offices From Cigar Box

Conservation News

Why people who could pay more buy FORD

More and more people who used to drive costly cars are being enthusiastically won over by Ford's Thunderbird-inspired styling and Trigger-Torque "Go."

Why, indeed, pay more?

Each of Ford's 16 models features styling inspired by the reigning beauty of the American road—the fabulous Ford Thunderbird.

The luxurious interiors of a Ford contain fabrics and colors such as the low-price field has never known.

Ford's new Trigger-Torque power brings you a new thrill in response. It gives you the secure feeling of knowing you can pass in a split-jiffy.

And Ford's power assists, too, (power brakes, steering, windows, 4-Way Power Seat and Speed-Trigger Fordomatic) can't be beat at any price. They are the equal of those found in costlier cars.

Take your Test Drive today. You'll see why, dollar-for-dollar, you can't buy better than Ford.

Thrill to a Ford Test Drive today!

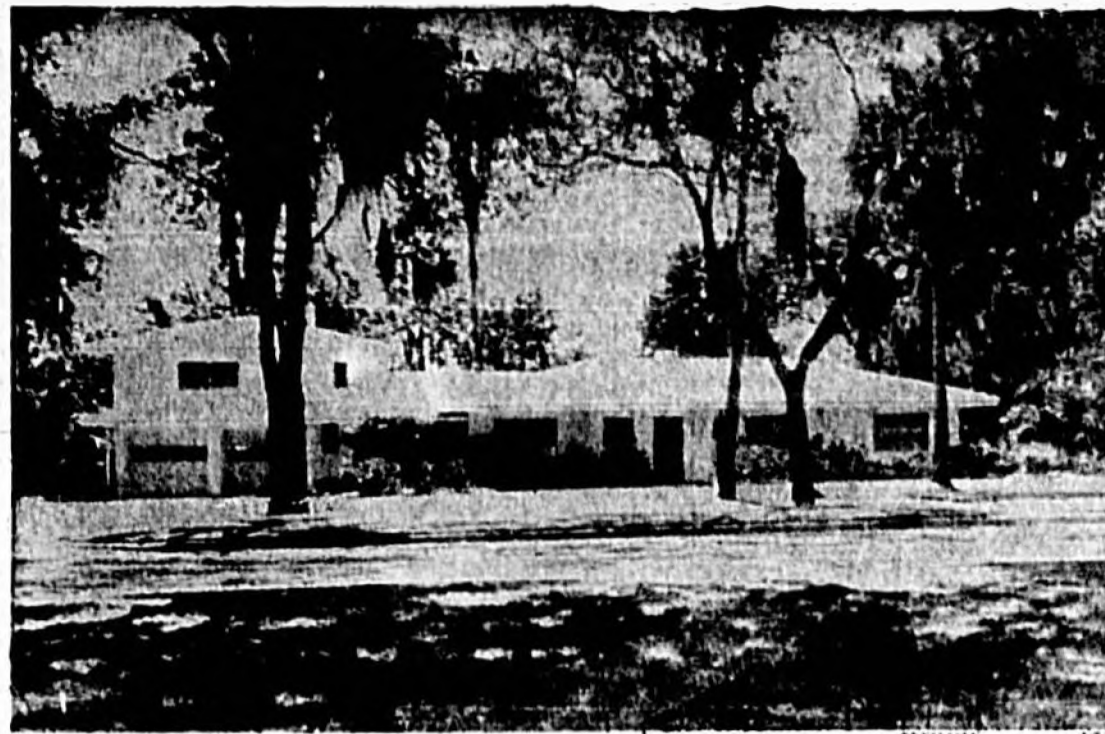
STRICKLAND-MORRISON, Inc.

ANNUAL HOMES EDITION

THE SANFORD HERALD
Mon. May 30, 1955 Page 1

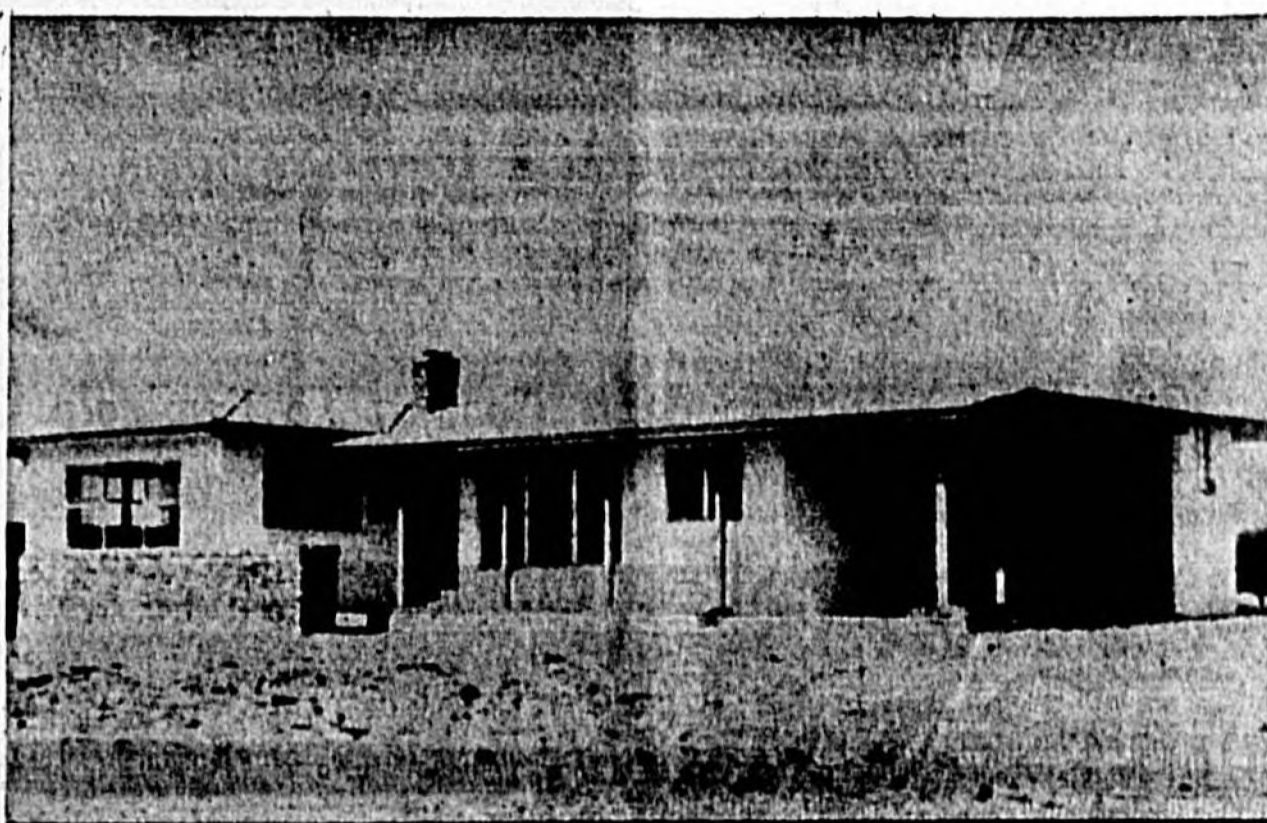


Ozier-Veller was the builder of the Willis home on Scott Ave.



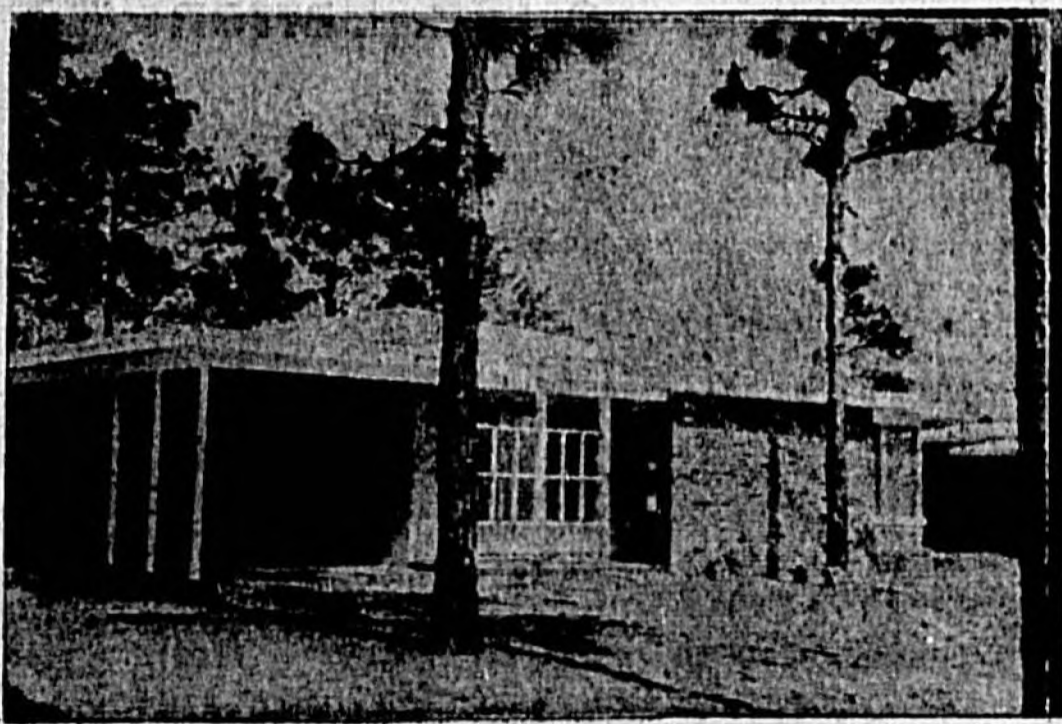
Built by Lowell E. Ozier, this beautiful contemporary-style home at 121 N. Summerlin Ave. is the property of James Blythe.

There is a way of life, a good way, expressed in the pride taken in caring for a home, inside and out. With the passing of winter and the freshness of spring almost gone, summer is the time to get at those odds and ends around the house that have been continually put off "until tomorrow". Tomorrow is here... How about keeping that promise?

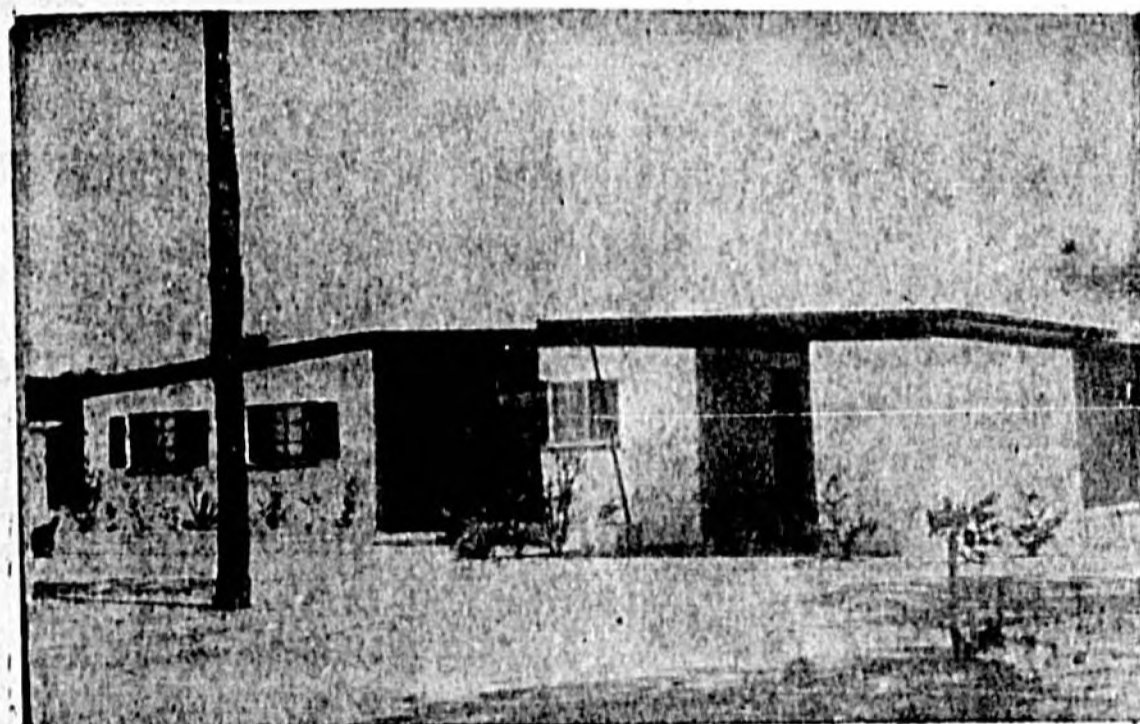


This home was built by Inland Construction Co. for Charles E. Bloom.
(Photo by Jamason)

Hospitality... the word has a pleasant sound to all who delight in sharing the pleasures of their homes. There are many facets to hospitality. Where can you find more of it than in Sanford with its friendly homes and smiling faces? And Florida's climate allows its residents to enjoy their homes even more than in most sections.



This modern Odham and Tudor home is located in Pine Crest.



Phillips Properties built this home in Loch Arbor.



it's time to...

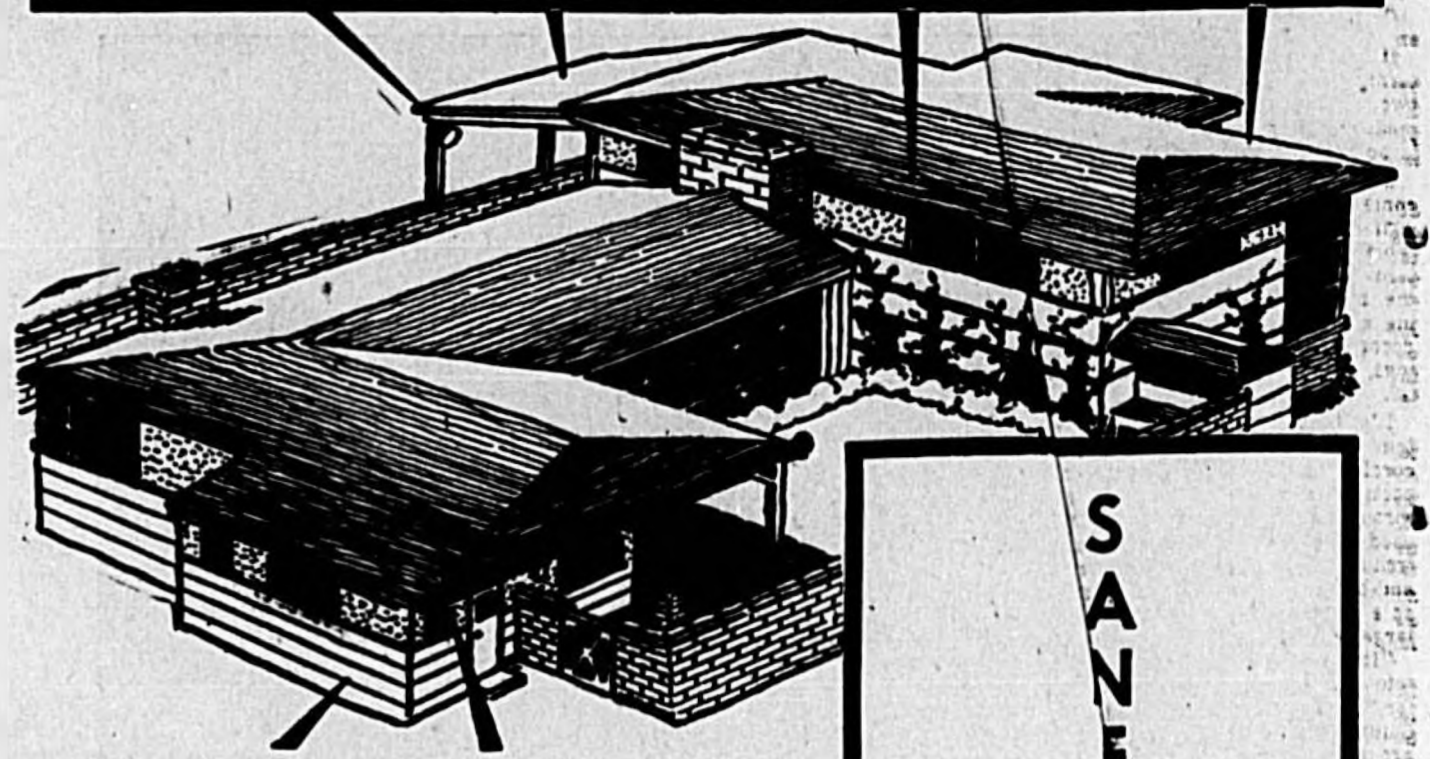
Clean up! Fix up!



MAY WE BE OF ASSISTANCE?

WE ARE PROUD

Helping to Build a Better



SANFORD

1. To Have Taken A Leading Part In The Growth Of Sanford And Seminole County.
2. And Of The Assistance We Have Been Able To Give To Developers, Contractors And Individual Home Builders Through Our Construction Loan Program.
3. That The Following Firms Have Allowed Us To Assist Them In Building Homes And Commercial Buildings For The Hundreds Of New Families That Have Been Coming To Seminole County To Live.

• Lowell Ozier

• Brailey Odham

• Charles Bloom

• Dawson Construction Co.

• Ozier-Weller

• W. L. Holcomb

• J. L. Perkins

• M. L. Nichols

• I. E. Batten

• P. M. Campbell

• F. A. Dyson

• T. S. Crawley

• Lawson & Yelvington

• Wellborn C. Phillips Jr.

4. We Really Believe In The Future Growth Of Sanford. This Past Year Our Construction Loans Exceeded \$1,000,000.

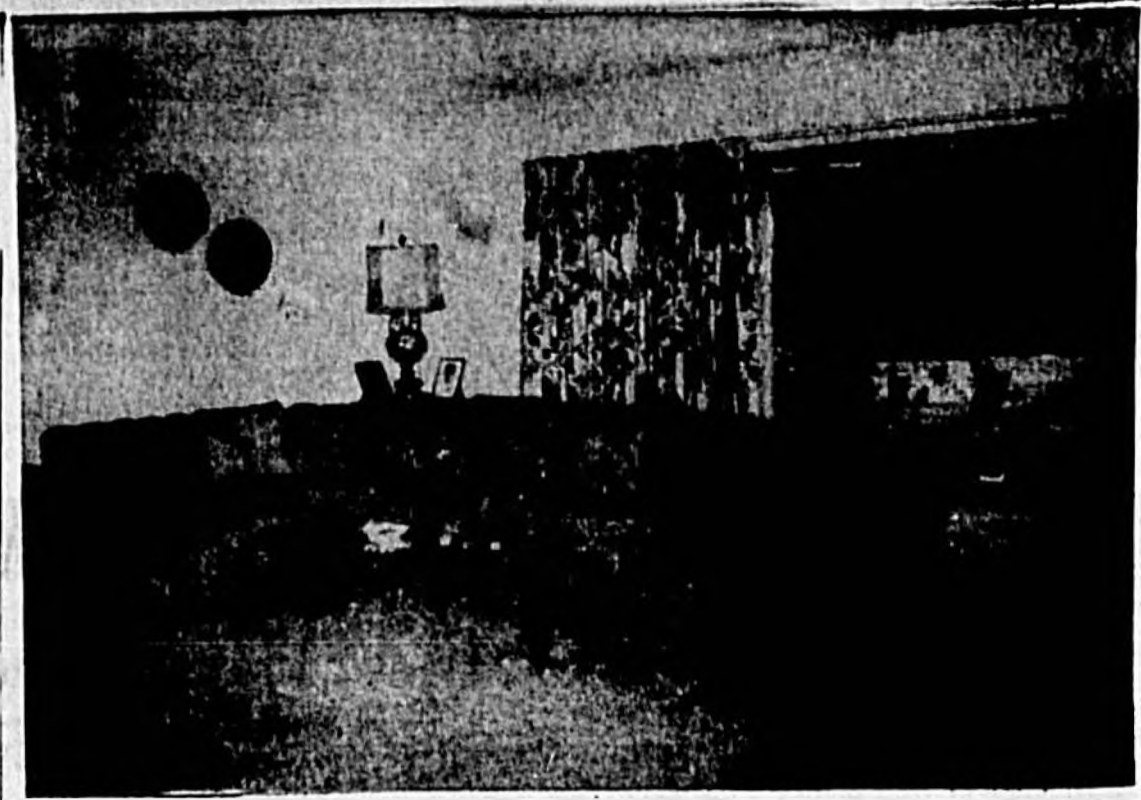
We Are Ready To Serve You In Your Construction Loan Needs—

Finance Those Home Repairs With A FHA Repair Loan. Up To 36 Months To Repay.

FLORIDA STATE BANK of SANFORD

"The Family Bank"

Deposits Insured up to \$25,000



This interior photograph of the James Blythe home at 121 N. Summerlin Ave. gives an idea of its spaciousness and inviting appearance. The home was constructed by Lowell E. Oizer. (Staff Photo).

These details are based upon HHAF's new booklet on plank-and-beam. The authors state... that most of the plank-and-beam research on which their booklet is based was undertaken by the National Lumber Manufacturers Association in 1938, and that it was obvious even then—18 years ago—that the system had tremendous merit.

"Now this is a fascinating fact: for it indicates that it took 16 years for consumer acceptance to reach the point at which plank-and-beam could be sold to home buyers."

"For plank-and-beam, like post-and-beam, makes most sense in a modern house. This was clear in 1938—but there was no widespread acceptance of modern then. Today there is—and plank-and-beam is coming into its own."

"It is characterized by the concentration of structural loads on one or two larger sized pieces than in conventional construction, resulting in rapid site assembly with fewer man-hours," the HHFA reported.

Plank-and-beam roof framing can be used with ordinary wood stud walls or masonry walls but many architects and builders favor post supports with "curtain walls." Such walls merely close in the structure, since the posts carry the vertical load of the house. The principal advantage of post-and-beam in modern design is great freedom in placing large glass areas for outdoor-living.

Plank-and-beam is one of the oldest types of construction and its revival is due to modern wood engineering techniques.

"It is characterized by the concentration of structural loads on one or two larger sized pieces than in conventional construction, resulting in rapid site assembly with fewer man-hours," the HHFA reported.

Plank-and-beam gives deep overhangs on all sides at little cost, making a house "look twice its size."

It permits ceiling heights and shapes to be varied for architecturally pleasing effects. It is suitable for gable, shed and butterfly roofs, as well as flat roofs.

It makes a house more solidly handsome both outside and in.

The plank-and-beam system is "uniquely adaptable to modern design," according to the Housing and Home Finance Agency. It serves the trend to open planning large glass areas, and the dual use of natural finish materials for both structure and decoration.

"It is characterized by the concentration of structural loads on one or two larger sized pieces than in conventional construction, resulting in rapid site assembly with fewer man-hours," the HHFA reported.

Chuluota Becomes Fast Growing Community

Once branded a ghost town, Chuluota is shedding its sheets, and smiling in the face of the sun once again. In the past two years this small community in the southeast corner of Seminole County, established in 1832, has grown with surrounding areas after being hindered by the big freeze and other slowing mishaps.

Two years ago Polonia Land Co. of Winter Park purchased the community and saw a bright future ahead. After basing ground work and restaking land it proceeded with the promotion of trying to interest people in this beautiful section lying on State Road 419.

The new type of retirement homes being built are adding to the preparation of securing something new in this market in Central Florida. A shopping center and country store is also being planned. Retirement homes will be opened to the public for inspection in the fall.

L. W. Morski, president of Polonia who also operates the Chuluota Realty, stated that Orlando, Seminole County and surrounding areas are spreading toward the East Coast and Chuluota should be the ideal location for those who want to be near larger cities and the ocean, especially work on when the cutoff to Coacoa is completed. It will then be only a 40-mile ride to the coast.

Morski brought out that lots are being reasonably sold so that prospective residents may put more money into their dream homes in this section of high land and beautiful lakes. Joseph Shifalo, Winter Park Architect, is working on designs for studio type homes adapted for retired and business people.

Among the newcomers to Chuluota are Dr. Pinkard of Colorado; the Wiggins family of Orlando; Headstrom, an engineer with Florida Irrigation, of Rhode Island; Dr. Gez of Holyoke, Mass.; S. Kulpa of New Jersey, a furniture dealer; A. Alexander, O. Stanley, foreign department manager of Dunn and Breadstreet and editor of a foreign trade publication magazine; Hendry Long, veteran of World War II; and T. Morski and family of Passaic, N. J. He plans to move his child apparel shop to Chuluota which will be the beginning of a small industry.

Thomas Woodley, electronic engineer who recently retired from French Morocco and Casablanca, was drawn to the community by its beauty and plans to make his future home there.

"The town has grown from nothing to a progressive area," Morski related, "and will once again become a full-fledged community."

THE SANFORD HERALD
Mon. May 30, 1955 Page 9

IS YOUR HOME SAFE?

IF IN DOUBT HAVE
IT CHECKED NOW—



When You Build Make Sure—
You Have Adequate Wiring.

FROM THE SMALL TO COMPLETE
REPAIR JOB HOME WIRING



"No Job To Large
or To Small"

SANFORD ELECTRIC CO.

116 MAGNOLIA AVE.

PHONE 443



RARE MARE
OCEANPORT, N. J. (AP)—The first American thoroughbred mare to win more than \$100,000 was Miss Woodford. In four years of racing she started 48 times, won 37 races and \$118,270. Only twice did she fail to run in the money.

A stakes race honoring this great mare is run annually at Monmouth Park.

When **BUILDING or REMODELING...**

FOR HAPPIER FLORIDA LIVING...Electrically!

"Wiring for tomorrow" is perhaps the most important step you can take to assure modern, carefree, electric living in the future. So, while planning for today's electrical conveniences, plan too, for those you will want to add tomorrow. Provide for at least 100 ampere service, plenty of branch circuits and wiring for all-electric living...it'll be your best investment for **Happier Florida Living...ELECTRICALLY!**

FLORIDA POWER & LIGHT COMPANY
E. H. Coleman, Div. Mgr. 207 Magnolia Ave.

Mellow Warmth Found In Latest New Cork Fashion

There is no doubt that the "cork look" is the New Look of 1935. The mellow warmth and richness of pure cork color are strongly influencing creative design in every field, from feminine fashions to home decoration, says the American Society of Interior Design.

Cork's look of elegance, traditionally associated with luxury and prestige, is a leader in smart handbags, fine table tops and distinctive background for every color and decor scheme in today's home.

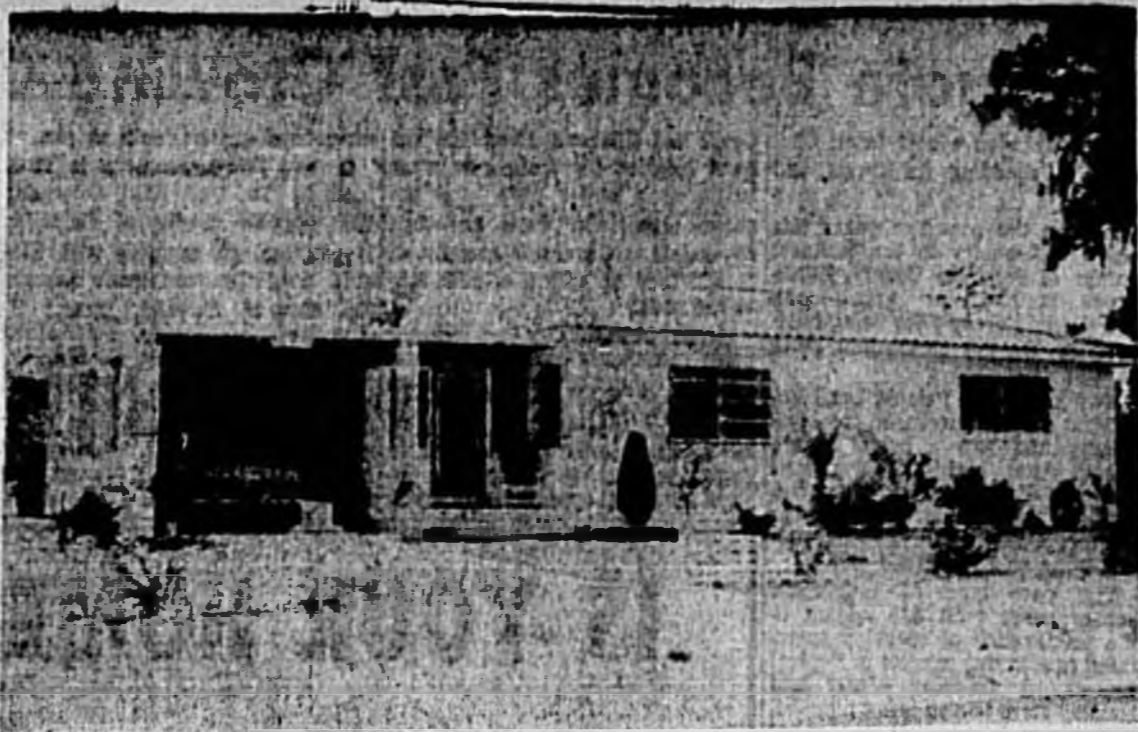
The beautiful, much-desired random tones of the cork look are especially effective in floor and wall coverings. Leading decorators are using the cork look to give unobtrusive luxury and loveliness to floors and walls in every type of room, from pretty bedrooms to impressive living rooms.

Cork Look at Low Cost
The cork look now can be the proud possession of homeowners who choose resilient asphalt tiles for their floors and walls. Asphalt tile flooring is available in four natural random cork shades, ranging from soft, but spirited, beige through rich medium beige tones to a warm, deep hue. These true shades of cork color provide innumerable decorative and individual design possibilities.

One of the country's most famous decorators has used the four shades in his design for a distinguished and unusual modern living room. The warm-toned pure cork color tiles are installed in a random geometric pattern of squares and oblongs which emphasizes their lovely cork texture and cork colors.

One corner of the living room is occupied by a brick fireplace which opens on two sides to the width and length of one end of the room. This is painted in sunny yellow and has a black iron grate and fixtures. The large bay window at the fireplace end of the room has been curtained in warm, russet-colored fabric that blends with the floor tile colors, and has a lounging nook upholstered in russet material. The long side wall is painted stark white, with the end wall around the nook finished in the same sunny yellow used on the fireplace bricks.

A black-framed Oriental screen, a large black-framed Chinese picture, a gay Oriental print with mat and frame in cork colors, a smart white wood side table and brass articles are among the well-



LOCATED IN MILLER ACRES in Delray this spacious Florida Home owned by Mr. and Mrs. B. F. Lusby shows fine building and clever planning for added space. (Photo by Jameson)

Clocks Harmonize

BY VIVIAN BROWN
You can find a clock to harmonize with any decorating scheme. The face doesn't change somehow although the figures of timepieces have been streamlined.

Most Americans choose a clock for every room. It is hard to be lonely with the heartbeat of a clock thumping rhythmically through the house. It is a warm friendly sound.

You can find silent or noisy clocks, chimes if you like, too. Or you can be primitive about time and control the lapse of minutes by a dribble of water, trickle of sand, sun dial or the 2,000 year old Chinese rope burning method.

But Americans being clock conscious (there was a clock maker in every good-sized community in

chosen accessories used in the room.

Leading interior decorators suggest using tiles in a single shade to create an effect of spaciousness, combining the simplicity and rich good taste of light and dark cork color tiles in a classic checkerboard of hollow square design; of using two, three or four cork shades in basket-weave, ribbon bands, diagonal stripes or any other exciting floor design desired. These experts agree that cork shades, installed on walls, as well as on floors, give a look of welcoming warmth and richness throughout the house, serving as a perfect foil for every type and period of furnishings. From traditional to modern

colonial days) you'll probably want to make your clock a decorating accessory in the home. Robert Herchede, third generation clock maker of Cincinnati says:

"The clock trend is toward modern materials—metals, leathers, plastics—to tie in with contemporary furnishings in furniture, wallpapers, decorative fabrics. But favorite styles are still available with 20th century streamlining. Traditional floor clocks have gone contemporary, and are designed for little houses, leaving a good amount of air space between ceiling and clock so that it doesn't dwarf the room."

Herchede experimented for a while with "tailored time" a method whereby a consumer would send his fabric to the factory to cover the clock of his choice. "Too time consuming," Herchede decided, although he did learn from the venture that people like their clocks to harmonize with room accessories. One clock was covered in the tartan plaid of the family clan. Says he: "Most clock makers are striving to produce clocks that can go with any style or period of a house and its furnishings whether it is Colonial or ranch type."

The 14-foot grandfather clock is now a design of a little over 5 feet and electrically motored, a far cry from the pendulum case clock built in 1875 based on the early theory of Galileo.

Modern editions of Dutch, Swedish or English wall clocks of the Queen Anne period are neat little leather designs as well as metal

resembling French tole and decorated in Provincial style.



walls accented by gray and powder blue furniture? Add white drapes a few brightly colored pillows along with a mahogany book case table combination and you have an inviting place.

Outdoor Living Part Of Enjoyment

BY VIVIAN BROWN

OUTDOOR LIVING is part of the American scheme of enjoyment. So garden furniture has come into prominence.

Bamboo, rattan, redwood, wrought iron, aluminum, stainless steel and plastic are just a few of the materials that bring the outdoors into the realm of easy living.

Redwood is popular, easy to refinish and to keep looking new with this method: Sand, smoothing away wood fibers, using a holder for the sandpaper. Remove all wood dust with a clean dry brush or lint-free cloth. Two coats of color-impregnated resin sealer give a durable finish protecting your wood against warping, swelling. Pores of wood are sealed against damaging moisture and special pigments filter out sun's rays. Resin color tones include driftwood, redwood, sage, cedar mahogany or others, permitting natural wood grain to show through. Sand lightly between coats.

OUTDOOR METAL furniture may be rejuvenated by washing, sandpapering rough or glossy

surfaces, cracks and rust spots and then painting. Give bare metal a coat of metal primer. Stir a speed enamel that is a nonflaking weather protector. Use a clean soft bristled brush. Place tables upside down so you can do legs first. Eighteen colors are available in this enamel. High style colors include antique white cream, dusky black, aqua, pale pink and coral this year. You can sprinkle a little gold metallic powder on newly painted surfaces

before the paint dries for a special effect.

Bamboo and rattan are also being painted in a dull black finish—better for patio or covered terraces, however, than in the broiling sun. Reds, vivid green and blue paints are being used on other wood finishes. Cracks or nail head indentations should be filled in wood chairs with a spackling material before sanding and painting.

DRY LUMBER

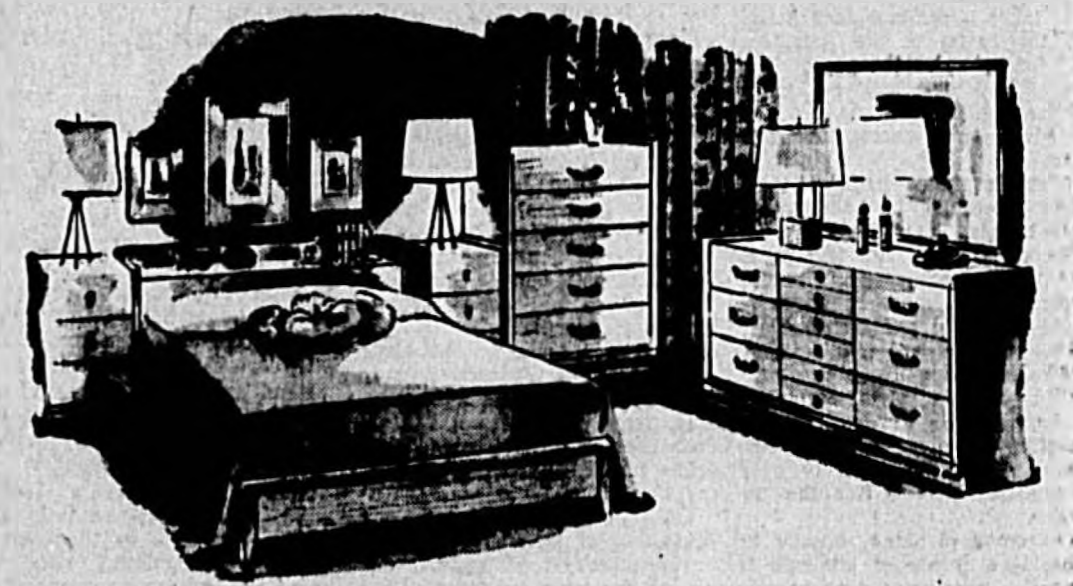
When building a new house, it's wise to insist on kiln dried softwood boards for a subfloor. If a subfloor shrinks, it may cause upturns to develop between strips of finish hardwood flooring. Contractors can use moisture meters to determine the exact amount of moisture in lumber.

THE SANFORD HERALD
Page 10 Mon. May 30, 1935

4 PIECE BEDROOM SUITE

with MATTRESS and BOX SPRINGS

\$169.95



SUITE CONSISTS OF NITE STAND, DOUBLE DRESSER & MIRROR CHEST... FULL SIZE BOOK CASE BED... INNERSPRING MATTRESS & BOX SPRINGS... AND TWO FEATHER PILLOWS.

BERRY'S WAREHOUSE FURNITURE CO.

TELEPHONE 1687

901 W. FIRST ST.

P. O. BOX 817

By Dreams

- PLANNING
- BUILDING
- OWNING
- YOUR OWN HOME

ASK US ABOUT IT

First Federal Savings & Loan Association

HAS THE EQUIPMENT TO GIVE YOUR HOME AND GARDEN A NEW LEASE ON LIFE!

- EDGERS
- MOWING MACHINES
- LAWN MOWERS
- LAWN SPRINKLERS
- WHEEL BARROWS
- LAWN SWEEPERS
- SPORTING GOODS
- WASHING MACHINES
- G. E. TV SETS
- POWER MOWERS
- REFRIGERATORS
- SUNBEAM APPLIANCES
- VACUUM CLEANERS
- WIZARD ELECTRIC RANGES
- WIZARD GAS RANGES
- WINDOW FANS
- ELECTRIC IRONS
- HOSE & SPRINKLERS
- RAKES & HOSES
- MOTORS

WESTERN AUTO ASSOCIATE STORE

314 E. 1st St. Phone 1644

Always First

By DAVID G. BAREUTHER
 "Let there be light!" seems to have been the first command given in the building of our universe, but apparently few home builders and interior decorators ever read the account of that project. The result is that most of our homes are so poorly lighted there may be some justification for the man who prefers to spend his evenings out with his cronies among the bright lights.

"The total cost of all fixtures built into the average new home today amounts to the absurdly low figure of \$25," says the American Home Lighting Institute.

The ladies, bless them, and their love for table lamps may be partly to blame for that. This writer, for example, is about reconciled to going through life with a slightly tilted neck from trying to read under a decorative lamp.

"Before you buy a home," advises the lighting institute, "check the absence or presence of lighting fixtures and you'll probably save both money and headaches."

One reason many new homes have no fixtures in living, dining and bedrooms is that builders often order for their houses in a handsomely furnished model home. The decorators, displaying the wares of the furniture stores, places a number of attractive table and floor lamps around—bedside lamps and boudoir realize that the light is not going to be thrown in with the house deal.

Because of the way families live nowadays, with youngsters doing their school work while the television set is going full blast, with lights left on in playroom, breezeway and garage, and floodlights in the yard, a modern house needs more current for lighting alone than was needed for all purposes a few years ago.

An old rule-of-thumb standard for room lighting called for three watts per square foot of floor area. Experts now figure that homes should have six or seven watts per square foot, while stores and offices can run as high as 20. Statisticians figure that house wiring has become obsolete in more than 34 million homes in this country.

Of course, portable lamps are essential to most decorative schemes, but they are primarily designed to provide pools of light. A combination of portable lamps and downlight from fixtures is needed for good vision.

Cove light and other forms of periphery illumination can be used to diffuse light throughout a room without causing direct glare. Some people prefer cove lights on two opposite walls rather than around all four sides of a room. However, it is usually considered impractical to use coves on walls that are more than 12 feet apart. As room dimensions increase, there is an increasing sense of darkness in the center of the ceiling in contrast to the higher brightness near the coves.

A definite trend is developing toward built-in lighting fixtures. In addition to cove lights, either fluorescent or incandescent, built-ins include recessed spot lights and floodlights, window or valance lights, wall lights and various decorative accent lights. Textures and colors of fabrics, murals and patterned wallpapers and carpets can be emphasized by proper lighting.

Tricks of the stage of electricians have been borrowed in a new form of modulated switch now on the market. Operating on the rheostat principle, this form of light control can give you any degree of

Kitchen Deserves To Get Little Art As Well As Parlor

BY DOROTHY ROE
 Associated Press Women's Editor
 Art belongs in the kitchen as well as the parlor, says Lester Gaba, Missouri-born columnist and fashion show producer who has just staged his first exhibit of "Paintings for Gourmets."

Giant vegetables and fruits form the theme for Gaba's collection of a score of king-size paintings, ranging from baseball-size peas in a pot to a 6-foot single carrot. Says he:

"Today's casual way of living has changed all the old ideas about which rooms are for what. Now that the kitchen has become the focal point of modern homes, paintings can move into the kitchen along with the guests."

The artist started his kitchen paintings as a hobby a couple of years ago, when he painted a slice of watermelon for his own beach cottage and planned his kitchen decor around it—watermelon pink walls, black and white checked cafe curtains and floor.

"My friends saw it and wanted me to do watermelon paintings for them, too," he says. "I did so many watermelons that I had spots before my eyes, so I started exploring the possibilities of other garden produce."

"Did you ever look at the delicate colors in a stalk of asparagus, or a ripe tomato cut in two, or an orange? It's amazing."

In the current collection, Gaba has king-size paintings of a single red onion, a scallion, a mushroom, an orange cut in two, a tomato the size of a washtub and various groupings of asparagus, as well as most other garden variety vegetables. All are giant size and simply framed.

A center of attraction is a painting of a loaf of french bread, with a wicker bread-basket frame.

"Today's hostess entertains in the kitchen as much as in the living room," says Gaba, "so the kitchen should be pleasing to the eye as well as the appetite."



THE W. E. WILLIS home is located at 400 Scott Ave. The spacious home was built by Ozier-Weller Homes Inc. (Staff Photo)

Added Space Needed

There is a time in the life of almost every family when the older youngsters require added space for their extensive hobbies and interests. Homemakers can solve this problem by changing a one-duty bedroom into a gay three-in-one center for youngsters, serving as bedroom, party-dining room and general enjoyment room, thus removing the clutter of their multiple collections and the noisy enjoyment of their activities from the family living room, says the American Society of Interior Design.

Because the type and colors of the floor keynote successful decorative schemes, it is wise to start a youngsters' 3-in-1 room by making a decision regarding the floor covering. An ideal choice would be a resilient asphalt tile.

A charming floor for a girl's room would be a dainty blue tile

Ozier-Weller Homes Well Known

Ozier-Weller Homes, Inc. during its five years' operation in Sanford has become known for its attractive and substantial homes. For 1955, a program of homes ranging from \$7,000 to \$9,500 is planned, according to A. K. Shoemaker Jr., vice president of the firm.

"We believe the market is here for homes with monthly payments less than \$60.00," said Shoemaker, "and we plan to build attractive three bedroom block and frame on spacious lots to satisfy this market. These houses will be in the Bel Air

and San Lanta sections of town and all lots have city sewer, water and paved streets." Shoemaker also stated that his firm felt the non-veteran was being overlooked in the matter of low down payment homes.

In addition to these homes, Ozier-Weller offers an architectural service at no charge for individuals owning their own lots. This service includes numerous consultations with the family in an endeavor to arrive at the most desirable plan. The following are taken into consideration before the preliminary plans are drawn—size of family, ages, amount and type of entertaining anticipated, hobbies, recreation tastes and finances.

with yellow, red, white and sea-green mottling. A tile with a red background mottled in gray, blue and white, or the decorator green background tile, spattered in red, blue and white is an effective foundation for the color scheme of a boys room.

After you install the asphalt tile floor, select furniture and accessories that are in tune with its colors. Built-in slab beds, with mattresses upholstered in a color that picks up the dominant hue of the tile, are an excellent choice, as they double as daytime seats when your youngsters entertain.

Textured coverings, fireproof and stainproof, come in a wide range of colors and prints for window accent. Install scratch-resistant composition tops on work tables and desks, and add storage chests and built-ins for the youngsters' clothes and their individual hobby materials.

A half-oval table for dining will save space if it is hinged to the wall, so it can be folded back and hooked when not in use.

Provide a handy place for radio, hi-fi receiver or the extra television set, which often can be built into a storage wall. Then turn the youngsters loose in their own gay Carnival surroundings, which practically are cops-and-robbers proof.

What You Should Know About House Paint

Some things you ought to know about house paint and painting:

• What is the best paint? The best paint is the one that is most economical in the long run. It is not necessarily the most expensive, but the one that will last the longest and give the best appearance.

• How to choose the right paint? Look for the name of the paint on the can. The name should tell you what the paint is for. For example, "Interior Paint" is for inside walls, and "Exterior Paint" is for outside walls.

• How to apply the paint? Use a brush for small areas and a roller for large areas. Apply the paint in thin, even coats. Allow each coat to dry before applying the next coat.

• How to clean up? Wash your brushes and rollers with water or turpentine, depending on the type of paint you used. Dispose of the waste properly.

• How to maintain the paint? Repaint areas that are chipped or peeling. Clean the paint regularly to keep it looking fresh.

Porcelain Buildings

Architectural porcelain enamel is now making its appearance in color. It is used for exteriors and interiors of schools, office buildings, hotels.



A SCRUB TEAM of "Dutch maidens" tackles State St. in Albany, N. Y., with long-handled brushes and wooden poles in a traditional part of the annual tulip festival. The capital of the Empire State was founded by Dutch settlers some 300 years ago, and the scrub-down stems from their famed cleanliness. The four-day festival then turned from scrubbing to folk dancing. (International Soundphoto)

Some things you ought to know about house paint and painting:

• What is the best paint? The best paint is the one that is most economical in the long run. It is not necessarily the most expensive, but the one that will last the longest and give the best appearance.

• How to choose the right paint? Look for the name of the paint on the can. The name should tell you what the paint is for. For example, "Interior Paint" is for inside walls, and "Exterior Paint" is for outside walls.

• How to apply the paint? Use a brush for small areas and a roller for large areas. Apply the paint in thin, even coats. Allow each coat to dry before applying the next coat.

• How to clean up? Wash your brushes and rollers with water or turpentine, depending on the type of paint you used. Dispose of the waste properly.

• How to maintain the paint? Repaint areas that are chipped or peeling. Clean the paint regularly to keep it looking fresh.

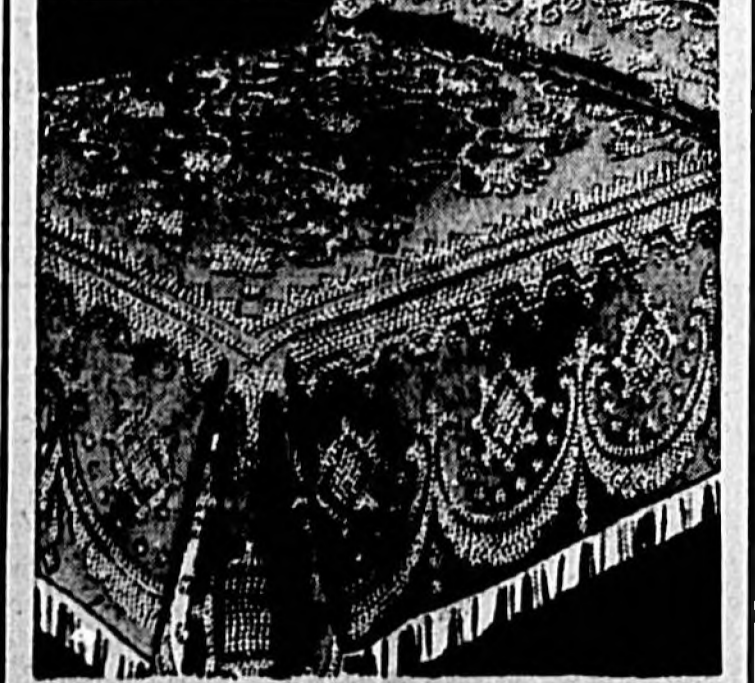
Kills Flies Like Magic!



Before you buy any fly control, stop by the store and see this brand new product kill flies while you watch. It comes in handy 2-lb. shaker-top cans or in 10- and 25-lb. bags. And say, you'll like the low, low price tag on Fly Bait. Stop by the first chance you get.

SIMPSON FARM SUPPLY

18th CENTURY CHARM CAPTURED BY Bates. "Old Colony Pride"



Only Bates master craftsmanship could give you such beautiful styling and quality for so little. Compare this yourself with similar spreads costing more; you'll see none of the skimping you usually find at "value" prices. Note that "Old Colony Pride" is generously full sized. Handle it; no skimping in weight. Look at the look and thickness of the loops, see how sharply they make the pattern stand out. Then consider that "Old Colony Pride" is preshrunk, bullion fringed, reversible and perfectly washable. Single or double in Antique White, Snow White, Hyacinth Pink, Daffodil or Mint. A really remarkable Bates buy at ONLY \$14.95

Yowell's

How To Finish Furniture

The most common methods of finishing furniture are staining, varnishing and enameling. Generally, staining and varnishing are used together. Stain is a semi-transparent liquid used only on bare wood. It colors but does not protect. Varnish is a liquid that dries hard and protects the surface underneath, giving a beautiful luster. Clear varnish is usually used for this purpose. Colored varnish renews the beauty of dingy or scratched furniture when you do not want to go to the trouble of completely refinishing the piece.

Enamel, usually used to refinish furniture, is known as a painted surface. It is opaque, easy to apply and completely covers scratches and decorations. Remove wax, furniture polish, grease or oil by washing with a cloth saturated with turpentine. Then immediately wipe with a clean, dry cloth. After the surface has dried, sand it with fine sandpaper. Overall light sanding helps to give better adhesion for the new finish. Always sand with the grain. Then dust off well. Don't dust with paint or varnish brush. Use a clean cloth or painter's duster.

If surface is in such condition that it is necessary to remove the old finish, use paint or varnish remover applying it to a small area at a time. Let it soften the old finish and then scrape off finish with putty knife or steel wool.

Str enamel thoroughly until it has a smooth consistency throughout. Half-hearted stirring may result in poor hiding, lack of uniformity, difference in degrees of gloss, and slow drying. Then apply in small squares. One coat is usually sufficient on previously finished surfaces. However, when changing from a dark to a light color, two coats are recommended. When painting un-

Hits the Spot



Ranishing weeds from a lawn is not difficult if the grass is sprayed with a solution of water and chemical weed killer. Be careful, though, around evergreens and other desirable plant life. A safe practice is to "spot water" with a galvanized steel sprinkling can, aiming the can nozzle directly at weeds.

finished wood an undercoat is desirable. Always allow coat to dry thoroughly before applying succeeding coats. Sand lightly and dust well between coats. Don't pile on heavy coats of paint. Two thin coats are better than one thick coat.

Unfinished metal furniture from which old finish has been removed requires a metal primer and one or two finish coats.

It is usually convenient when painting small tables, chairs etc., to do the underneath parts first. For example, turn a chair upside down and paint legs first. Then set it on its feet and complete the painting.

When the summer months are over, don't forget to store your outdoor lighting units where they can be conveniently reached for the Christmas holidays.

For The Home . . .



curtain
 glamour
 gains
 a
 third
 dimension
 in

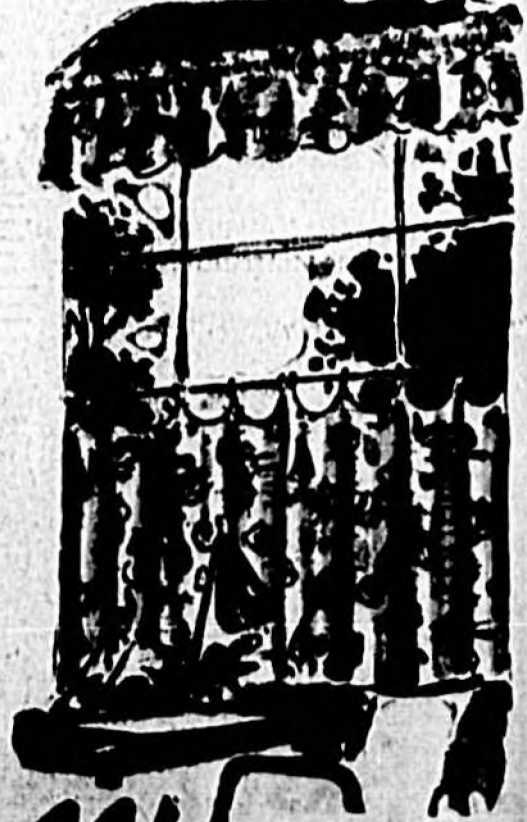
"SCULPTURED" Nylon Curtains by KENNETH

Delicate patterns highlight the sheerness of fine nylon marquisette . . . Kenneth calls it "Sculptured"; we call it wonderful . . . and you'll want to call it your own! Tailored panels and matching Modesty curtains have decorator styled brass clips included at no extra charge! Use them as glass curtains with draperies . . . combine Modesties with tailored curtains . . . hang Modesty on Modesty . . . every way lends a charm to the room curtained with "Sculptured" Nylons. Nylon is easy to care for . . . the Sculptured designs are fully washable.

\$3.98

Cafe' Curtains

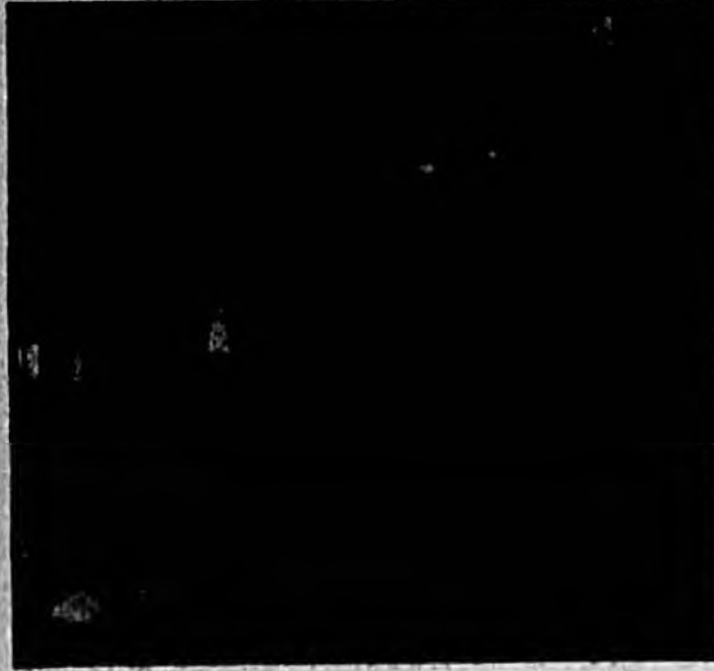
- CURTAIN \$4.98 pair
- VALANCE \$1.98



For All Your Window Needs Visit . . .

Yowell's

Light Up For Summer Living Outdoors After Sundown



By MARY E. WEBBER
Lighting an outdoor space for summer living is almost like adding another room to your home. One of the newest and most exciting pleasures in summer outdoor living is comfortable, lighted surroundings where families can read, relax or entertain friends on warm summer evenings.

The added freedom of doing many of the things outdoors that we do in our cheerful, comfortable lighted rooms indoors can add many extra hours of pleasure after the sun goes down. On cooler evenings, too, when you're staying inside, you can enjoy the beauty of our own "lighted view" from the comfort of your own armchair.

To extend your outdoor living space, first step is to start with lighting-living plan. Every house is as individual as the family that lives in it. Today's outdoor lighting, however, can play many roles. Whether you start out on the smallest scale in the smallest house with portable outdoor lighting units which you place yourself or, have them permanently installed by your electrician, you'll discover new beauty and excitement in your night-time setting.

Look around your yard, your porch, trees, shrubbery, and flower beds. Remember, lighting can bring out the beauty, color, form, texture, line and size of any object so look at your scene as a whole and then decide upon your own personal plan. When you light up outdoors at night you'll find your place will have a whole new personality by night.

There are any number of ideas in the pictures above that you can use around your home this summer. If your house doesn't already have a pleasant outdoor terrace like the one pictured above, perhaps you could create your own version of it on the side of your garage. This one has a simple slanted roof or overhang that provides just enough protection so the family can still enjoy it during summer showers.

Although it is a thing of beauty in itself, this lighted terrace is as versatile as it is attractive after dark. From indoors, it's almost an extension of the living room and provides a colorful picture from indoors and a comfortable place to entertain, dine or have tea outside.

In spite of its luxury look, there's nothing luxury priced about the lighting equipment for the terrace shown at left of the apple tree and through the window. In fact, you can duplicate this arrangement on your own smaller terrace for less than \$50.00 worth of outdoor lighting equipment.

Of course that's exclusive of THE SANFORD HERALD, Page 12, Mon. May 30, 1955

wiring but, if you've been lighting up for the Christmas holidays you may already have enough weather-proof outdoor outlets.

For a party atmosphere, those clever bubbles on the terrace glow with color from 25-watt fluorescent bulbs. They're lightweight, durable plastic, open at the top and bottom, and their bulbs can be easily changed to suit the occasion.

For an evening of relaxing or entertainment, bulbs are changed to 60-watt yellow which discourage night-flying insects. When the terrace is used for dining a quick change to a 75-watt R-30 reflector bulb provides a dramatic spotlight effect on the table when it is located beneath it.

To bring out the vibrant color of the potted geraniums that decorate the terrace, two louvered spot lamps are placed at the two corners of the overhang and directed on them.

The unusual lighting of the old apple tree which is located between the bubble terrace and the larger terrace shown in the picture on the lower right above, is achieved from four locations.

Although it looks like part of the tree itself in the picture, a portable fixture, shaped like a tree trunk, conceals a 150-watt floodlamp. Notice how it brings out the twisted shape of the tree which is one of its most endearing qualities with the family that owns it.

Two 150-watt projector spotlights in outdoor-type holders, located in a nearby tree at the left, create the highlight on that side of the tree. Another pair of projector floodlamps, 25 feet apart on the house which is just to the right of the tree, model the remaining foliage and emphasize the form of the tree.

The larger terrace which may give you ideas about your own covered porch area, has 75-watt reflector bulbs as sketched above, clamped to and shielded by the broad louvers that support the plastic roof. Three flood and two spotlamps not only make an interesting lighting effect but give chairs located beneath these generous light for reading. Lighted butterfly-shaped units with luminous plastic shades, and 25-watt yellow lamps, accent the twin flower beds at the entrance porch.

Last, but by no means least, are the lighted flower beds that border the windows. Weather-proof 150-watt projector lamps with louvered attachments, mounted to the overhang on the far corners of the open terrace, create light the colorful simula bed that borders the picture windows.

Notice how the light from inside, filtering through the bamboo window curtains, prevents otherwise dark areas and helps harmonize the outdoor lighting with the cheerful, comfortable lighting inside the house.



LIGHT UP OUTDOORS for added fun in summer living. Pictured here are suggestions on how one family developed its yard area for outdoor living. Borrow some of their lighting ideas for your own trees, flower beds, shrubbery and living areas.

Australian Lady Makes Escape From Roles

HOLLYWOOD — It's Medea among the melons and Lady Macbeth in the lettuce patch when Judith Anderson is not doing her high-powdered emoting before audiences.

The Australian-born actress gets away from it all at her 38-acre ranch in Carpinteria, just south of Santa Barbara, Calif. "And friends say that she really escapes from her classical roles up yonder. Instead of flowing robes, she sports blue jeans, old shirts and straw hats.

POWER BOAT CHAMPION
CONCORD, Calif. (AP)— Bud Wiget of this city is mighty proud of his Colonel Urean Star Island Trophy, emblematic of the high point title in outboard motorboat racing in Florida during the winter. The 41-year-old walnut rancher compiled 2,000 points during the American Power Boat Assn.'s campaign. Wiget had five consecutive wins in his C service runabout Crosswind.

NOW MANY NAILS?
DETROIT (AP)— Because there are 55,555 nails in one house, Mrs. Irena Simon and Mrs. Caroline Moffatt now own it jointly. Valued at \$40,000, the house was a prize at the Detroit Builders Show. Contestants had to guess how many nails it took to build it. Mrs. Simon guessed 55,535; Mrs. Moffatt, 55,554. The winners said they would sell the house and split the money.

Rudy Vallee May Be Next To Be Filmed

HOLLYWOOD — Rudy Vallee may be the next show biz great to be immortalized in celluloid. But the long-time Vagabond Lover won't be playing himself, and for a very good reason — money.

Vallee is back in his Hollywood... "But I would prefer an agent who was a big name of the business office, say a Tony Curtis. Since I would be sharing in the profits, I would rather have a star who would bring more millions in." Vallee is here for his Sunday night CBS radio show, but he's been hustling back to New York. He explained that the advertising agency prefers to have it originate from there. "And we find that there are so many more celebrities to interview back there," he added. "When they go to New York, they expect to be available for such things; here they're hard to get."

Homes You Can Afford

TO BE BUILT SOON IN SAN LANTA AND BEL AIR SUBDIVISIONS

35 — 3 BEDROOM HOMES

in the low cost range

from \$7,000.00 to \$9,500.00

EQUIPMENT OPTIONAL

All on paved streets with city water and sewer

VA financing — pay closing costs only

FHA financing — 5% down, plus closing costs

Evening & Week-end Appointments Gladly Made Upon Request

We will also build a home of your choice on your own lot.

Modern Homes for Modern Living

OZIER-WELLER HOMES, Inc.

Phone 1301, 1903 — 9 A. M. to 5 P. M.



HILL DID IT!



THEY FURNISHED EVERYTHING FOR OUR HOME —

LUMBER · MILLWORK

ROOFING · SIDING

CABINET WORK

PAINTING

FOR BUILDING REMODELING REPAIRING

SEE

HILL

LUMBER AND SUPPLY YARD

Call The Lumber Number

83

For Sudden Service



HILL LUMBER & SUPPLY YARD



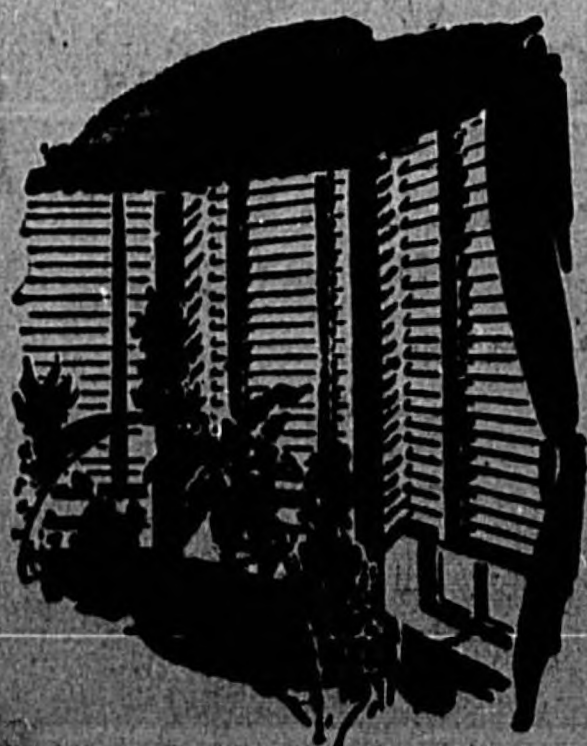
SENKARIK OFFERS . .

WINDOW BEAUTY!

- BETTER LIGHTING
- DURABILITY
- GREATER COMFORT
- EASIER CLEANING
- IMPROVED APPEARANCE

Invest in Quality

Buy with Confidence

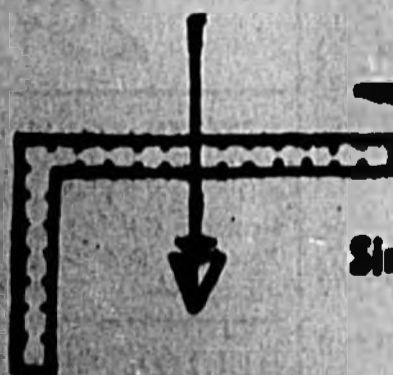


Senkarik Glass & Paint Co.

PH. 249

BEFORE YOU BUY... ANYWHERE

consider
and
compare
these features
of a
Phillips Home
in
Dreamwold

 **Wellborn C. Phillips Jr.**
Since 1949 SANFORD'S
LEADING BUILDER
Sales Office: Corner Oceola Drive and Marquis
Avenue in Dreamwold

PHONE **1504**

CUT ON DOTTED LINE...
USE THIS CHECK LIST

	DREAMWOLD	OTHER	OTHER
HOMES:			
Many and varied Floor Plans	<input checked="" type="checkbox"/>	<input type="checkbox"/>	<input type="checkbox"/>
Varied Elevations	<input checked="" type="checkbox"/>	<input type="checkbox"/>	<input type="checkbox"/>
Varied Roof Lines	<input checked="" type="checkbox"/>	<input type="checkbox"/>	<input type="checkbox"/>
Varied Front Doors	<input checked="" type="checkbox"/>	<input type="checkbox"/>	<input type="checkbox"/>
Varied Color Combinations	<input checked="" type="checkbox"/>	<input type="checkbox"/>	<input type="checkbox"/>
Large Plots	<input checked="" type="checkbox"/>	<input type="checkbox"/>	<input type="checkbox"/>
Shrubbery	<input checked="" type="checkbox"/>	<input type="checkbox"/>	<input type="checkbox"/>
Sprigged Front and Side Yards	<input checked="" type="checkbox"/>	<input type="checkbox"/>	<input type="checkbox"/>
Carport and Screened Porch	<input checked="" type="checkbox"/>	<input type="checkbox"/>	<input type="checkbox"/>
Vinyl Plastic Tile Floors	<input checked="" type="checkbox"/>	<input type="checkbox"/>	<input type="checkbox"/>
5 Citrus Trees per House:			
Valencia (Late)	<input checked="" type="checkbox"/>	<input type="checkbox"/>	<input type="checkbox"/>
Pineapple (Early)	<input checked="" type="checkbox"/>	<input type="checkbox"/>	<input type="checkbox"/>
Pink Grapefruit	<input checked="" type="checkbox"/>	<input type="checkbox"/>	<input type="checkbox"/>
Kumquat	<input checked="" type="checkbox"/>	<input type="checkbox"/>	<input type="checkbox"/>
Tangerine	<input checked="" type="checkbox"/>	<input type="checkbox"/>	<input type="checkbox"/>
G. E. KITCHEN:			
G. E. Refrigerator	<input checked="" type="checkbox"/>	<input type="checkbox"/>	<input type="checkbox"/>
G. E. Range	<input checked="" type="checkbox"/>	<input type="checkbox"/>	<input type="checkbox"/>
G. E. Disposal	<input checked="" type="checkbox"/>	<input type="checkbox"/>	<input type="checkbox"/>
G. E. 66-gal Water Heater	<input checked="" type="checkbox"/>	<input type="checkbox"/>	<input type="checkbox"/>
G. E. Dishwasher (2-bath homes)	<input checked="" type="checkbox"/>	<input type="checkbox"/>	<input type="checkbox"/>
G. E. Automatic Washer (2-bath homes)	<input checked="" type="checkbox"/>	<input type="checkbox"/>	<input type="checkbox"/>
Formica Counter Tops—One piece and roll edge	<input checked="" type="checkbox"/>	<input type="checkbox"/>	<input type="checkbox"/>
Large Kitchens—Adequate Cabinet Space	<input checked="" type="checkbox"/>	<input type="checkbox"/>	<input type="checkbox"/>
FOR BEAUTY:			
Viola Doors	<input checked="" type="checkbox"/>	<input type="checkbox"/>	<input type="checkbox"/>
Vinyl Paint	<input checked="" type="checkbox"/>	<input type="checkbox"/>	<input type="checkbox"/>
Roof — Tile or Built-up with White Marble Chips	<input checked="" type="checkbox"/>	<input type="checkbox"/>	<input type="checkbox"/>
Venetian Blinds	<input checked="" type="checkbox"/>	<input type="checkbox"/>	<input type="checkbox"/>
Full Ceramic Tile Baths	<input checked="" type="checkbox"/>	<input type="checkbox"/>	<input type="checkbox"/>
Exterior Brick Sills	<input checked="" type="checkbox"/>	<input type="checkbox"/>	<input type="checkbox"/>
FOR COMFORT:			
Furred and Plastered Walls	<input checked="" type="checkbox"/>	<input type="checkbox"/>	<input type="checkbox"/>
Insulated Ceilings	<input checked="" type="checkbox"/>	<input type="checkbox"/>	<input type="checkbox"/>
Magic Chef Heater — With Blower	<input checked="" type="checkbox"/>	<input type="checkbox"/>	<input type="checkbox"/>
Nutone Kitchen Fan	<input checked="" type="checkbox"/>	<input type="checkbox"/>	<input type="checkbox"/>
Large Screened Porch	<input checked="" type="checkbox"/>	<input type="checkbox"/>	<input type="checkbox"/>
Silent Switches	<input checked="" type="checkbox"/>	<input type="checkbox"/>	<input type="checkbox"/>
Door Chimes	<input checked="" type="checkbox"/>	<input type="checkbox"/>	<input type="checkbox"/>
FOR CONVENIENCE:			
20 or more Double Electric Outlets	<input checked="" type="checkbox"/>	<input type="checkbox"/>	<input type="checkbox"/>
Large Storage	<input checked="" type="checkbox"/>	<input type="checkbox"/>	<input type="checkbox"/>
Extra Large Closets	<input checked="" type="checkbox"/>	<input type="checkbox"/>	<input type="checkbox"/>
Ceramic Tile Sills	<input checked="" type="checkbox"/>	<input type="checkbox"/>	<input type="checkbox"/>
Lights in Closets	<input checked="" type="checkbox"/>	<input type="checkbox"/>	<input type="checkbox"/>
FOR SAFETY:			
Waterproofing under Floor Slab	<input checked="" type="checkbox"/>	<input type="checkbox"/>	<input type="checkbox"/>
Metal Termite Shield	<input checked="" type="checkbox"/>	<input type="checkbox"/>	<input type="checkbox"/>
Built under FHA and VA Specifications	<input checked="" type="checkbox"/>	<input type="checkbox"/>	<input type="checkbox"/>
Sanford Building Code	<input checked="" type="checkbox"/>	<input type="checkbox"/>	<input type="checkbox"/>
CITY FACILITIES:			
City Water	<input checked="" type="checkbox"/>	<input type="checkbox"/>	<input type="checkbox"/>
City Sewer	<input checked="" type="checkbox"/>	<input type="checkbox"/>	<input type="checkbox"/>
Door-to-Door Mail Delivery	<input checked="" type="checkbox"/>	<input type="checkbox"/>	<input type="checkbox"/>
Concrete Curbs	<input checked="" type="checkbox"/>	<input type="checkbox"/>	<input type="checkbox"/>
Paved Streets	<input checked="" type="checkbox"/>	<input type="checkbox"/>	<input type="checkbox"/>
FINANCING:			
FHA and VA	<input checked="" type="checkbox"/>	<input type="checkbox"/>	<input type="checkbox"/>

NO DOWN PAYMENT

CLOSING COST ONLY

AS LOW AS **\$375.00**

GI FINANCING

Home Landscaping Adds Needed Touch

By SADIE B. GUT
The Sanford Garden Club of F. F. G. C.

Many of you new home owners are facing the task of landscaping your property with uncertainty and some perplexity.

If the thought of planning a setting for your home is completely distasteful to you by all means turn the job over to competent landscape specialists who will consult your tastes and come up with a professional effect that will please you. F. H. A. loans are available for a complete landscaping plan on easy terms, because such improvements add greatly to the value of the property.

The professional landscaper will consult with you as to what you expect to make of your grounds, whether a clothes drying or play area is required and whether your tastes run toward bird baths and such.

On the other hand if you wish to follow the popular do-it-yourself trend, go complete landscaping if your nurseryman who will be glad to advise you and also steer you away from many of the pitfalls of inexperience.

Do start with a good plan, showing location of house, existing trees, walks and drives. Plot your service area, borders, lawns, shade trees and other desired features, so you may plant one area at a time knowing it will fit into the overall plan. Unless your "handyman" expects to make a holiday of the yard had better stick to plants requiring a minimum of maintenance.

The first job is to remove all broken bricks, concrete and other trash from the premises, and do any leveling necessary, remembering to shovel in one side any good topsoil available rather than burying it under a pile of subsoil. The next is to lay in a good supply of organic materials such as peat, leafmold, compost, sheep manure and leaves.

Our sandy soils need lots of building up and all the moisture-retaining materials possible. None of the top dressings applied later on lawns and shrubs can take the place of organics worked into the soil at planting time. Lawns should have three or four inches of peat or muck and some sheep manure spread over the surface and then dug into a depth of six inches before planting grass or seed.

Shrubs and trees should have an ample hole prepared, putting the top soil aside to be mixed with peat or leafmold, sheep manure etc. After placing plant in hole this mixed and enriched soil is packed firmly around the root system, and the dirt from bottom of hole then used to fill in above the roots. Leave a slight depression around the plant to catch and retain water and see that the new plantings are watered frequently until established.

Filling the depression with a leaf mulch will aid greatly in keeping soil moist and cool.

Trees should be planned for early in avoid digging into the new lawn and to get them growing on their way to providing the shade and scenic effect desired. They do most for the property when placed to the side and back of the house to provide a frame or background, however shade trees should be planted where it will give shade where and when most desired. In some cases an evergreen tree is an advantage, in shade in summer and welcome sunshine in winter is preferred.

The home owner has a wide choice of trees, being restricted mainly by the size of his lot; some of the larger trees such as a magnolia grandiflora may not be for him. A flowering tree is a happy choice since it serves the dual purpose of shade and bloom. Citrus and some of the small deep rooted trees may even be incorporated into the border. Other shallow rooted ones such as the Kalmia (Golden Rain) are better used on the open lawn. Peloponnesus is a newer tree that is flowering in summer followed by clusters of rosy seed pods in fall. Ask your dealer about others.

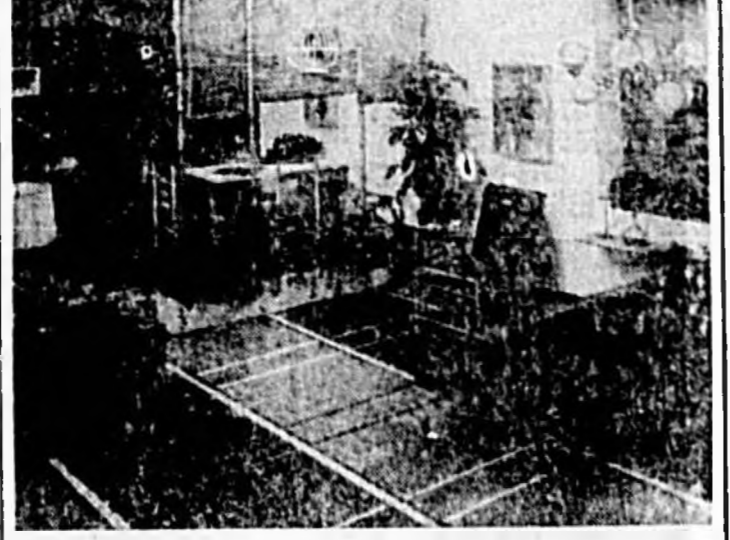
For house foundations choose plants that will "tie" the house to its surroundings, accent its lines and not become overgrown in a few short years. Paeonia is often used at house corners because it is a hardy evergreen that can withstand the cold winds that whip and eddy corners and serves to protect the other plants as well. If a formal shaped specimen of pedunculata (Beeches) or Serraria buxifolia (Beeches) is used as a porch planter, you may prefer a less severe plant at corners, such as Jasmines, Flamingo or Viburnum.

Lower growing plants are a wise choice for under windows or for outlining low porches. These might well be Jasmines, Flamingos, Serrarias, River Ligustrum (a slow grower), spreading type Cotoneas or Viburnum sempervirens.

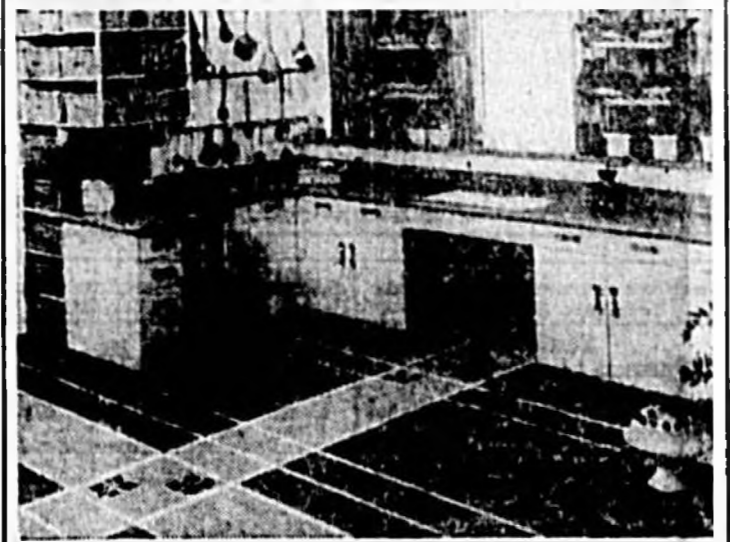
Taller shrubs may be used in the wall spaces between windows, selecting from such shrubs as tall growing Cotoneas, Fajon, Hibiscus, Laura, Orange Jasmine (Chateau de Murrey), Japanease (Hana no Bush), Turquoise or the distinctive Ligustrum chinensis with dark, wavy, curled leaves and stiff branches remaining one of an evergreen.

Exotic Orient Influences Decor

The age-old beauty and mystery of the Far East are reflected in modern home decoration. Rich, colorful woods and decorative accessories echoing the colors and culture of Asian countries, are used in adaptations suited to present day living. Bamboo, wicker and cane, in warm beige shades from natural to deep honey, fashion window curtains, furniture and many other articles. Bold feature simple, functional lines. In contrast, the art and decorative objects used for beauty and accent, all display the vivid colors and hand-carved work associated with the opulent luxury of the East. Here are two rooms which show the exotic influence of the Orient.



A bamboo room divider sets off the dining area of this contemporary room. Bamboo chairs are upholstered in Chinese red, and the dark wood table has a wicker-padded end. End wall is green, others are white. Far Eastern accessories include bird cage, glass case of dancing Oriental figures on the fruitwood console, and a wall shadowbox puppet in bright regalia. Books stand on deep window ledge against a bamboo shade. The paneled floor is inlaid with strips of beetle brown and desert sand, with green and white feature strips used in interesting design.



Bamboo and wicker highlight this streamlined kitchen. A collection of wicker baskets goes added storage space. Copper and brass handles are brass. Counter top is Capri blue Knoll vinyl material which matches the floor tiles surrounding the broad crownbands of white tiled tiles, both set off by white and yellow feature strips and green and white trim tiles. Wicker plant baskets, bamboo window and under-curtain, a bamboo teapot and serving trays all emphasize the rich decor.

Architects Are Now Pondering Over Sound-Conditioned Homes

BY DAVID G. BAREEUTHER

MODERN HOMES ARE getting to be so noisy that architects, builders and decorators are now chewing their pencils over a new study in their home work — "sound conditioning." This is quite a science and already has reached a stage where experts say that "a sound conditioned house is easier to sell."

If they had left Grandpa's farm house alone, this worry about acoustics, vibrations and decibels might not have come up. But homes today seem to be packed with noise-making machines. Radio, TV and hi-fi compete with vacuum cleaners, mixers and grinders, air conditioners, attic fans and ventilating fans, washers and dryers.

Furthermore, walls are thinner as a rule, partitions fewer because of open planning, large areas of glass bounce sound waves through the house and if you don't have a hearing aid to turn off, you can just grin and bear it.

THE UPSHOT is that many smart home builders are now including wall-to-wall carpeting, acoustical ceiling tile and clever planning services in their homes to absorb and insulate noise. They say they are convinced that "sound conditioning makes a small house feel big and makes any house feel more solid."

Builders on Long Island, at Valley Forge and in Pittsburgh have had instant success in including carpeting in their "package" of equipment.

Builders in Milwaukee, Miami and South Bend are including acoustical tile for ceilings in noisy rooms — kitchens and playrooms.

Architects are using rows of cloths as sound baffles between rooms, flanking bathrooms with closets and even maneuvering bathrooms behind fireplace chimneys. They have discovered in their experiments with split-level houses that different ceiling heights can muffle sound while high "cestral" or studio ceilings tend to dissipate sound.

Always Be On Alert For Small Gimmicks

"HERE'S LUCK and happiness in your new home," said a guest at a housewarming party as he hoisted a cocktail glass. "May your floor never squeak and your roof never leak."

Assembled neighbors and friends of the family joined in the toast. But the moment they took the first sip of their cocktails the house no longer belonged to the host.

There was a clause in his deed specifying that if this property ever should be used for the "manufacture, sale or consumption of intoxicating liquor, the title to said premises shall immediately and without notice or demand revert to the seller."

That's about the quickest way to drink yourself out of house and home that we ever heard of.

The story was told by George F. Anderson of the National Assn. of Real Estate Boards. That's a vicious condition in a deed," he explained, "and buyers should be on the lookout against it."

WHEN YOU BUY real estate, it is not like buying groceries, or even an automobile. Lawyers say that no one actually owns land. What you own is a title to a piece of land together with whatever may be on that land. This right is contained in a deed.

And there are two main steps in buying real estate. One is the signing of a binding legal contract to buy it. The next is the actual taking of title. These two steps may be separated by a month or more in order to get all legal details worked out to make a fool-proof deal.

Apparently our cocktail-serving home buyer had never read the deed to his property. Most certainly that anti-drinking clause or "restrictive covenant" as lawyers call it, was not mentioned in the contract of sale, or the buyer might not have signed it. Furthermore, if he had noticed that clause in the deed, he would have gotten out of any contract which had not mentioned such a restriction.

Screen Can Serve Useful Purposes

By VIVIAN BROWN

A standing screen can serve many useful purposes in the household. It can be pushed hastily around the laundry basket. It can screen baby's crib from a draft or lend privacy to a corner of a room.

One of burlap and pine designed by Elizabeth Cowan may be made for less than \$10. Here's how:

You'll need a crewel work needle, long sewing needle, a paint brush, rabbit-plane, right angle wood clamps. Materials include 3 1/2 yards of gold murlap, 1 spool dark brown sewing thread, 1 spool each of red and turquoise linen weaving yarn (or other colors), 1 hank of brown cotton rope (the type used in weaving), white pine strips, glue, sandpaper, a small can of lacquer or varnish, 1 pint gold lacquer, a double birge with screws, 6 metal glider feet, about 300 brass head upholstery tacks.

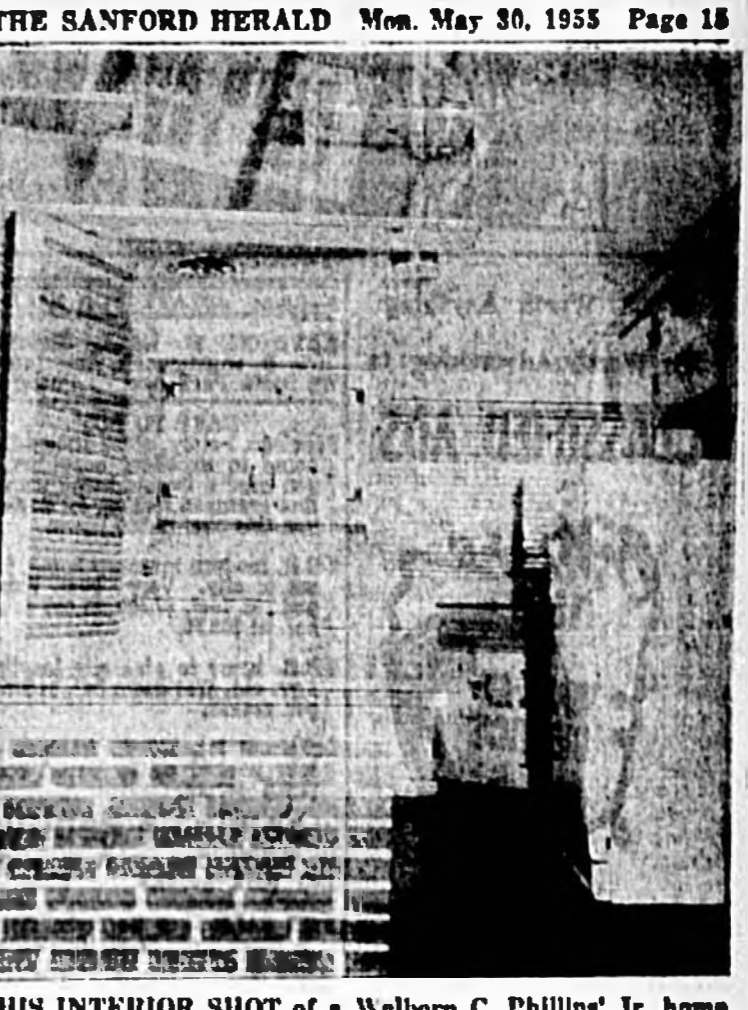
The Frame

Make it out of white pine strips, 70 in. long and 6 pieces 20 1/2 in. long (2 1/2 by 3 1/2 in. stock). The joints at corners are rabbeted to increase the rigidity and strength of the frame. Spread wood glue in grooves and on tongues. Join. Placed glued pieces in clamps to dry. When all pieces are assembled join three frames with double hinges. One hinge should be about 3 inches from upper edge, one in the center and another 3 inches from the bottom. Attach glider feet, two on each panel. Sandpaper and apply one coat of varnish or lacquer. When dry paint with gold lacquer. (To use a paint color of your choice if you prefer.)

Embrodering Burlap

Cut three pieces of burlap 66 in. x 24 in. Lay out the design. The weave in burlap is so definite that it is easy to embroider a straight line by following a thread. A stripe is made by weaving up and down in a slant line. The stripes are ten threads of the burlap weave wide and the slant is ten threads long. Turquoise is pretty. Use outline stitches for narrow stripes twelve inches long, overlapping six threads from previous stitch. Red harmonizes nicely. Go all the way through the burlap with these stripes so the design appears on both sides. Conceal yarn ends under stitches. Couch the brown cotton rope on with brown sewing thread. Be careful that stitches do not go through the burlap to show on the reverse side unless the rope design is repeated on the back.

Fold raw edges of burlap toward front. Attach burlap panels to the back side of frame with upholstery tacks, allowing 1 in. overlap and 2 in. spacing. Tack upper edge first, then work down evenly on each side. Keep the same amount of tension on each side so the design remains straight.



THIS INTERIOR SHOT of a Welborn C. Phillips Jr. home shows the loveliness of a finely finished kitchen complete with pine cabinets, snack bar, stove, refrigerator and the all around compactness with no wasted space. This home is located in the "Little Venice" section of Phillips Properties in

AMERICAN-Standard POWDER ROOM FIXTURES

Ledgewood lavatory and Cadet water closet. The Ledgewood is made of rigid cast iron and finished with a heavy coating of enamel. The Compact is genuine vitreous china. Both are durable, beautiful, easy to clean.

Embrodering Burlap

Cut three pieces of burlap 66 in. x 24 in. Lay out the design. The weave in burlap is so definite that it is easy to embroider a straight line by following a thread. A stripe is made by weaving up and down in a slant line. The stripes are ten threads of the burlap weave wide and the slant is ten threads long. Turquoise is pretty. Use outline stitches for narrow stripes twelve inches long, overlapping six threads from previous stitch. Red harmonizes nicely. Go all the way through the burlap with these stripes so the design appears on both sides. Conceal yarn ends under stitches. Couch the brown cotton rope on with brown sewing thread. Be careful that stitches do not go through the burlap to show on the reverse side unless the rope design is repeated on the back.

Fold raw edges of burlap toward front. Attach burlap panels to the back side of frame with upholstery tacks, allowing 1 in. overlap and 2 in. spacing. Tack upper edge first, then work down evenly on each side. Keep the same amount of tension on each side so the design remains straight.

No Down Payment, 3 Full Years To Pay ROY WALL, PLUMBING

1007 Sanford Ave. Phone 1118

Expert PLUMBING SERVICE

SALES AND SERVICE

Let us give a new look to your kitchen with modern sinks and plumbing. We install and service equipment.

R. L. Harvey

201 S. Sanford Ave. Phone 1920

HOW MANY COATS FOR MY NEW CLAPBOARD HOUSE?

3 COATS OF CHEAP PAINT | 1 COAT OF HIGH PRICED PAINT | 2 COATS OF MOORWHITE PRIMER AND MOORE'S HOUSE PAINT

Your best bet by far is No. 3. Moorwhite Primer assures uniform sealing and hiding... provides a dependable base for finishing coats. Moore's House Paint brushes and spreads easily... covers old colors excellently... ruggedly resists weathering! In your favorite colors and white.

Benjamin Moore paints

Consult us about all your painting questions.

Senkarik Glass & Paint Co.

114 W. 2nd St. Phone 930

FURNITURE Values!

FOR JUNE BRIDES and MODERN HOME-MAKERS

SPECIAL \$159.50

A REAL BUY!

ALUMINUM STACK	SPECIAL AT	PEEL CANE	SPECIAL AT
PLASTIC WEBBING CHAIR	\$5.95	TUB CHAIR	\$3.49

Highest Trade-In Allowances Offered On Your Old Furniture On The Purchase Of New!

WILSON-MAIER FURNITURE CO.

311 EAST FIRST STREET PHONE 948

Many People Prefer Living Nearer City

By DAVID G. BAREUTHER
AP Real Estate Editor

Everyone who buys a new home does not buy a house—some buy an apartment in a cooperatively owned building. Of course, they do not actually own the apartment they occupy. They own stock in a corporation which owns the building. That entitles them to occupy and maintain their apartment—so it amounts to about the same as owning the rooms.

However, lots of people would rather establish their homes in or near the heart of a crowded city where they can be within walking distance or a short taxi ride from their jobs, than travel a long distance for the pleasures of lawn mowing, snow shoveling and falling off painters' ladders.

So the other day we took a look at how the other half lives, visiting a swank new cooperative project on New York's Fifth Avenue, directly opposite the Metropolitan Museum of Art. We found a very fine apartment that compares favorably in space with a nice house in the country—7 rooms, 3 baths, extra lavatory and a private porch in the form of a roof terrace overlooking Central Park.

The price for this apartment is \$26,225 and the estimated total annual charge, including maintenance and other fixed expenses, is \$5,872.50.

Now of course you can find cooperative apartments for much less money. In the past 10 years many cooperative apartment buildings were erected for the average man with the aid of subsidies or FHA assistance. In each case the advantages of real estate tax deductions on your income tax return were stressed.

So in this luxury building, where income taxes are no joke for the apartment dwellers, the salesmen point out that if you are in the 50 per cent tax bracket (if, he says) your deduction for real estate taxes will amount to \$1,822.50 yearly, which leaves you only \$3,775 for an actual monthly charge to live there.

But luxury certainly has changed its meaning in the past generation. Back in the 1920's, before the 1 1/2-room apartment had been invented, 7-room apartments were ordinary. Sometimes you had to enter through the dining room and apologize to the sauerkraut and pig knuckles fans for inspecting their quarters at that hour—but John Markle, the coal man, was then living in a 40-room Fifth Avenue apartment, all alone—except for 14 servants.

We remember having printed an item in the early 1930's when documents in the county clerk's

office showed that a famous banker paid \$350,000 for his cooperative apartment. Although the price had become a matter of public record, he was furious when he read the item and called up to ask if we didn't know men were selling apples on the street.

And Arthur Brisbane, the famous editor and real estate speculator, had 32 rooms on the top two floors of another Fifth Avenue building. His living room was 50 feet long, 30 feet wide and two stories high, with fireplaces at each end big enough to barbecue a Texas steer whole in each one of them, but Brisbane never was that informal.

The biggest apartment we ever saw was that of Mrs. Marjorie Post Close Hutton (later Davies)—totaling 66 rooms. She was so much in love with the Hutton mansion on upper Fifth Ave. that she couldn't bear the thought of losing it when skyrocketing taxes dictated the construction of an apartment house. So she had the entire mansion reproduced, exact to every detail, on the top three floors of the new building.

What became of such luxury homes? Times changed. And architects had many a headache trying to cut such apartments down to size.

Outdoor Pen Fine For Baby Gives Freedom

By VIVIAN BROWN
AP Newsfeatures Writer

Why not build your baby an outdoor playpen?

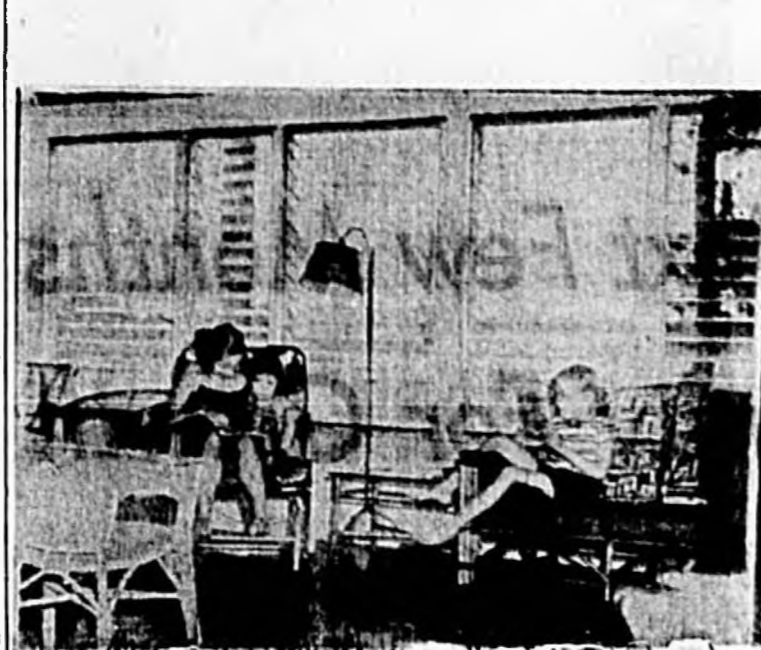
Make it large enough to give him plenty of freedom and he'll enjoy it, perhaps from toddler stage until age 4. Then a stone fortress won't be able to hold him within.

Mom and Dad can make this playpen a joint project. Dad may dig the post holes and Mom can help to unfurl and steady the chain-link fence as Dad adjusts it into place. Aluminum chain-link is light, easy to handle, needs no paint as it does not rust. It may be mounted on wooden or steel posts.

Although these fences have a luster bright finish, you might add a creeping vine of some sort. You could also plant a flower border or shrubs around the pen. If they are low growing they will not screen out baby.

Here's how:

Dig post holes one foot deep and big enough around to hold 4



"JUST A FLORIDA HOME" said Mrs. John H. Williams, when we took an interior picture of her den and porch combination overlooking the lake in the Loch Arbor section. A rambling ranch type house with airy rooms and bright cheerful colors she thinks is just the thing with four children. Enjoying themselves (left to right) are Gynne, 11; Beth, three; and Jeff, eight. (Photo by Jameson)

by 4's of any good grade of lumber. Post holes should be 6 to 8 feet apart. If the fence is 10 feet square, post holes should be about 5 feet apart. Use a regular post hole digger or if the ground is rocky, rent one of the electric professional diggers that grind into the rocks in a jiffy. (Some states prohibit the rental of this type of high-powered tool.)

Put a 4 by 4 in each hole making sure it is absolutely vertical by bracing it while the concrete is poured and hardened. A small bag of pre-mixed concrete that merely requires the addition of water, is all that is needed.

Nail 2 by 4 cross beams between the posts. Use a heavy duty stapler (that can be rented at local hardware stores or borrowed from a factory or office) to fasten the chain-link fence directly to the cross beams and posts. The usual height of this baby playpen would be about 4 feet. It is linked so that it cannot be climbed by a youngster.

Junior can entertain in this play

area to his heart's delight. A sandbox with awning may be put inside to provide shade on a hot day. A little wading pool may also be built within this space, providing it is filled only when adults supervise the play.

Junior can entertain in this play

area to his heart's delight. A sandbox with awning may be put inside to provide shade on a hot day. A little wading pool may also be built within this space, providing it is filled only when adults supervise the play.

area to his heart's delight. A sandbox with awning may be put inside to provide shade on a hot day. A little wading pool may also be built within this space, providing it is filled only when adults supervise the play.

area to his heart's delight. A sandbox with awning may be put inside to provide shade on a hot day. A little wading pool may also be built within this space, providing it is filled only when adults supervise the play.

area to his heart's delight. A sandbox with awning may be put inside to provide shade on a hot day. A little wading pool may also be built within this space, providing it is filled only when adults supervise the play.

area to his heart's delight. A sandbox with awning may be put inside to provide shade on a hot day. A little wading pool may also be built within this space, providing it is filled only when adults supervise the play.

area to his heart's delight. A sandbox with awning may be put inside to provide shade on a hot day. A little wading pool may also be built within this space, providing it is filled only when adults supervise the play.

area to his heart's delight. A sandbox with awning may be put inside to provide shade on a hot day. A little wading pool may also be built within this space, providing it is filled only when adults supervise the play.

area to his heart's delight. A sandbox with awning may be put inside to provide shade on a hot day. A little wading pool may also be built within this space, providing it is filled only when adults supervise the play.

area to his heart's delight. A sandbox with awning may be put inside to provide shade on a hot day. A little wading pool may also be built within this space, providing it is filled only when adults supervise the play.

area to his heart's delight. A sandbox with awning may be put inside to provide shade on a hot day. A little wading pool may also be built within this space, providing it is filled only when adults supervise the play.

area to his heart's delight. A sandbox with awning may be put inside to provide shade on a hot day. A little wading pool may also be built within this space, providing it is filled only when adults supervise the play.

area to his heart's delight. A sandbox with awning may be put inside to provide shade on a hot day. A little wading pool may also be built within this space, providing it is filled only when adults supervise the play.

area to his heart's delight. A sandbox with awning may be put inside to provide shade on a hot day. A little wading pool may also be built within this space, providing it is filled only when adults supervise the play.

area to his heart's delight. A sandbox with awning may be put inside to provide shade on a hot day. A little wading pool may also be built within this space, providing it is filled only when adults supervise the play.

area to his heart's delight. A sandbox with awning may be put inside to provide shade on a hot day. A little wading pool may also be built within this space, providing it is filled only when adults supervise the play.

area to his heart's delight. A sandbox with awning may be put inside to provide shade on a hot day. A little wading pool may also be built within this space, providing it is filled only when adults supervise the play.

area to his heart's delight. A sandbox with awning may be put inside to provide shade on a hot day. A little wading pool may also be built within this space, providing it is filled only when adults supervise the play.

area to his heart's delight. A sandbox with awning may be put inside to provide shade on a hot day. A little wading pool may also be built within this space, providing it is filled only when adults supervise the play.

area to his heart's delight. A sandbox with awning may be put inside to provide shade on a hot day. A little wading pool may also be built within this space, providing it is filled only when adults supervise the play.

area to his heart's delight. A sandbox with awning may be put inside to provide shade on a hot day. A little wading pool may also be built within this space, providing it is filled only when adults supervise the play.

area to his heart's delight. A sandbox with awning may be put inside to provide shade on a hot day. A little wading pool may also be built within this space, providing it is filled only when adults supervise the play.

area to his heart's delight. A sandbox with awning may be put inside to provide shade on a hot day. A little wading pool may also be built within this space, providing it is filled only when adults supervise the play.

area to his heart's delight. A sandbox with awning may be put inside to provide shade on a hot day. A little wading pool may also be built within this space, providing it is filled only when adults supervise the play.

area to his heart's delight. A sandbox with awning may be put inside to provide shade on a hot day. A little wading pool may also be built within this space, providing it is filled only when adults supervise the play.

area to his heart's delight. A sandbox with awning may be put inside to provide shade on a hot day. A little wading pool may also be built within this space, providing it is filled only when adults supervise the play.

area to his heart's delight. A sandbox with awning may be put inside to provide shade on a hot day. A little wading pool may also be built within this space, providing it is filled only when adults supervise the play.

area to his heart's delight. A sandbox with awning may be put inside to provide shade on a hot day. A little wading pool may also be built within this space, providing it is filled only when adults supervise the play.

area to his heart's delight. A sandbox with awning may be put inside to provide shade on a hot day. A little wading pool may also be built within this space, providing it is filled only when adults supervise the play.

area to his heart's delight. A sandbox with awning may be put inside to provide shade on a hot day. A little wading pool may also be built within this space, providing it is filled only when adults supervise the play.

area to his heart's delight. A sandbox with awning may be put inside to provide shade on a hot day. A little wading pool may also be built within this space, providing it is filled only when adults supervise the play.

area to his heart's delight. A sandbox with awning may be put inside to provide shade on a hot day. A little wading pool may also be built within this space, providing it is filled only when adults supervise the play.

area to his heart's delight. A sandbox with awning may be put inside to provide shade on a hot day. A little wading pool may also be built within this space, providing it is filled only when adults supervise the play.

area to his heart's delight. A sandbox with awning may be put inside to provide shade on a hot day. A little wading pool may also be built within this space, providing it is filled only when adults supervise the play.

area to his heart's delight. A sandbox with awning may be put inside to provide shade on a hot day. A little wading pool may also be built within this space, providing it is filled only when adults supervise the play.

area to his heart's delight. A sandbox with awning may be put inside to provide shade on a hot day. A little wading pool may also be built within this space, providing it is filled only when adults supervise the play.

area to his heart's delight. A sandbox with awning may be put inside to provide shade on a hot day. A little wading pool may also be built within this space, providing it is filled only when adults supervise the play.

area to his heart's delight. A sandbox with awning may be put inside to provide shade on a hot day. A little wading pool may also be built within this space, providing it is filled only when adults supervise the play.

area to his heart's delight. A sandbox with awning may be put inside to provide shade on a hot day. A little wading pool may also be built within this space, providing it is filled only when adults supervise the play.

area to his heart's delight. A sandbox with awning may be put inside to provide shade on a hot day. A little wading pool may also be built within this space, providing it is filled only when adults supervise the play.

area to his heart's delight. A sandbox with awning may be put inside to provide shade on a hot day. A little wading pool may also be built within this space, providing it is filled only when adults supervise the play.

area to his heart's delight. A sandbox with awning may be put inside to provide shade on a hot day. A little wading pool may also be built within this space, providing it is filled only when adults supervise the play.

area to his heart's delight. A sandbox with awning may be put inside to provide shade on a hot day. A little wading pool may also be built within this space, providing it is filled only when adults supervise the play.

area to his heart's delight. A sandbox with awning may be put inside to provide shade on a hot day. A little wading pool may also be built within this space, providing it is filled only when adults supervise the play.

area to his heart's delight. A sandbox with awning may be put inside to provide shade on a hot day. A little wading pool may also be built within this space, providing it is filled only when adults supervise the play.

area to his heart's delight. A sandbox with awning may be put inside to provide shade on a hot day. A little wading pool may also be built within this space, providing it is filled only when adults supervise the play.

area to his heart's delight. A sandbox with awning may be put inside to provide shade on a hot day. A little wading pool may also be built within this space, providing it is filled only when adults supervise the play.

area to his heart's delight. A sandbox with awning may be put inside to provide shade on a hot day. A little wading pool may also be built within this space, providing it is filled only when adults supervise the play.

area to his heart's delight. A sandbox with awning may be put inside to provide shade on a hot day. A little wading pool may also be built within this space, providing it is filled only when adults supervise the play.

area to his heart's delight. A sandbox with awning may be put inside to provide shade on a hot day. A little wading pool may also be built within this space, providing it is filled only when adults supervise the play.

area to his heart's delight. A sandbox with awning may be put inside to provide shade on a hot day. A little wading pool may also be built within this space, providing it is filled only when adults supervise the play.

area to his heart's delight. A sandbox with awning may be put inside to provide shade on a hot day. A little wading pool may also be built within this space, providing it is filled only when adults supervise the play.

area to his heart's delight. A sandbox with awning may be put inside to provide shade on a hot day. A little wading pool may also be built within this space, providing it is filled only when adults supervise the play.

area to his heart's delight. A sandbox with awning may be put inside to provide shade on a hot day. A little wading pool may also be built within this space, providing it is filled only when adults supervise the play.

area to his heart's delight. A sandbox with awning may be put inside to provide shade on a hot day. A little wading pool may also be built within this space, providing it is filled only when adults supervise the play.

area to his heart's delight. A sandbox with awning may be put inside to provide shade on a hot day. A little wading pool may also be built within this space, providing it is filled only when adults supervise the play.

area to his heart's delight. A sandbox with awning may be put inside to provide shade on a hot day. A little wading pool may also be built within this space, providing it is filled only when adults supervise the play.

area to his heart's delight. A sandbox with awning may be put inside to provide shade on a hot day. A little wading pool may also be built within this space, providing it is filled only when adults supervise the play.

area to his heart's delight. A sandbox with awning may be put inside to provide shade on a hot day. A little wading pool may also be built within this space, providing it is filled only when adults supervise the play.

area to his heart's delight. A sandbox with awning may be put inside to provide shade on a hot day. A little wading pool may also be built within this space, providing it is filled only when adults supervise the play.

area to his heart's delight. A sandbox with awning may be put inside to provide shade on a hot day. A little wading pool may also be built within this space, providing it is filled only when adults supervise the play.

area to his heart's delight. A sandbox with awning may be put inside to provide shade on a hot day. A little wading pool may also be built within this space, providing it is filled only when adults supervise the play.

area to his heart's delight. A sandbox with awning may be put inside to provide shade on a hot day. A little wading pool may also be built within this space, providing it is filled only when adults supervise the play.

area to his heart's delight. A sandbox with awning may be put inside to provide shade on a hot day. A little wading pool may also be built within this space, providing it is filled only when adults supervise the play.

area to his heart's delight. A sandbox with awning may be put inside to provide shade on a hot day. A little wading pool may also be built within this space, providing it is filled only when adults supervise the play.

area to his heart's delight. A sandbox with awning may be put inside to provide shade on a hot day. A little wading pool may also be built within this space, providing it is filled only when adults supervise the play.

area to his heart's delight. A sandbox with awning may be put inside to provide shade on a hot day. A little wading pool may also be built within this space, providing it is filled only when adults supervise the play.

area to his heart's delight. A sandbox with awning may be put inside to provide shade on a hot day. A little wading pool may also be built within this space, providing it is filled only when adults supervise the play.

area to his heart's delight. A sandbox with awning may be put inside to provide shade on a hot day. A little wading pool may also be built within this space, providing it is filled only when adults supervise the play.

area to his heart's delight. A sandbox with awning may be put inside to provide shade on a hot day. A little wading pool may also be built within this space, providing it is filled only when adults supervise the play.

area to his heart's delight. A sandbox with awning may be put inside to provide shade on a hot day. A little wading pool may also be built within this space, providing it is filled only when adults supervise the play.

area to his heart's delight. A sandbox with awning may be put inside to provide shade on a hot day. A little wading pool may also be built within this space, providing it is filled only when adults supervise the play.

area to his heart's delight. A sandbox with awning may be put inside to provide shade on a hot day. A little wading pool may also be built within this space, providing it is filled only when adults supervise the play.

area to his heart's delight. A sandbox with awning may be put inside to provide shade on a hot day. A little wading pool may also be built within this space, providing it is filled only when adults supervise the play.

area to his heart's delight. A sandbox with awning may be put inside to provide shade on a hot day. A little wading pool may also be built within this space, providing it is filled only when adults supervise the play.

area to his heart's delight. A sandbox with awning may be put inside to provide shade on a hot day. A little wading pool may also be built within this space, providing it is filled only when adults supervise the play.

area to his heart's delight. A sandbox with awning may be put inside to provide shade on a hot day. A little wading pool may also be built within this space, providing it is filled only when adults supervise the play.

area to his heart's delight. A sandbox with awning may be put inside to provide shade on a hot day. A little wading pool may also be built within this space, providing it is filled only when adults supervise the play.

area to his heart's delight. A sandbox with awning may be put inside to provide shade on a hot day. A little wading pool may also be built within this space, providing it is filled only when adults supervise the play.

area to his heart's delight. A sandbox with awning may be put inside to provide shade on a hot day. A little wading pool may also be built within this space, providing it is filled only when adults supervise the play.

area to his heart's delight. A sandbox with awning may be put inside to provide shade on a hot day. A little wading pool may also be built within this space, providing it is filled only when adults supervise the play.

area to his heart's delight. A sandbox with awning may be put inside to provide shade on a hot day. A little wading pool may also be built within this space, providing it is filled only when adults supervise the play.

area to his heart's delight. A sandbox with awning may be put inside to provide shade on a hot day. A little wading pool may also be built within this space, providing it is filled only when adults supervise the play.

area to his heart's delight. A sandbox with awning may be put inside to provide shade on a hot day. A little wading pool may also be built within this space, providing it is filled only when adults supervise the play.

area to his heart's delight. A sandbox with awning may be put inside to provide shade on a hot day. A little wading pool may also be built within this space, providing it is filled only when adults supervise the play.

area to his heart's delight. A sandbox with awning may be put inside to provide shade on a hot day. A little wading pool may also be built within this space, providing it is filled only when adults supervise the play.

area to his heart's delight. A sandbox with awning may be put inside to provide shade on a hot day. A little wading pool may also be built within this space, providing it is filled only when adults supervise the play.

area to his heart's delight. A sandbox with awning may be put inside to provide shade on a hot day. A little wading pool may also be built within this space, providing it is filled only when adults supervise the play.

area to his heart's delight. A sandbox with awning may be put inside to provide shade on a hot day. A little wading pool may also be built within this space, providing it is filled only when adults supervise the play.

area to his heart's delight. A sandbox with awning may be put inside to provide shade on a hot day. A little wading pool may also be built within this space, providing it is filled only when adults supervise the play.

area to his heart's delight. A sandbox with awning may be put inside to provide shade on a hot day. A little wading pool may also be built within this space, providing it is filled only when adults supervise the play.

area to his heart's delight. A sandbox with awning may be put inside to provide shade on a hot day. A little wading pool may also be built within this space, providing it is filled only when adults supervise the play.

Holiday Lighting Can Be Put To Use

Christmas in July—Well, hardly, but you can use your holiday lighting equipment for garden lighting this summer. What's more, the effect can be so subtly different that even your next door neighbor won't suspect it's the same equipment.

First, use the same weather-proof electrical outlet for your garden lighting that you use for your holiday lighting. For added convenience, a 30-foot weather-proof extension cord with four sockets spaced at intervals will make your job easier at both seasons.

Silhouette effects in flower beds are easy to do with those same outdoor strings of Christmas lights you use along the eaves and on shrubbery at Christmas time.

Lighting specialists remind you that for silhouette effect like that shown in the flower bed pictured above, you merely lay your string of lights on the ground and then, work them in among the flowers.

Which colors you use is a matter of your own personal taste. However, in summer, most people prefer white bulbs for flowers and save the colored ones for Christmas or for parties. Nicest convenience of these lights is that you can move them from one flower bed to another as seasons change.

You'll like this silhouette effect best in low, full-growing flower beds like the marigolds shown in the picture above. It lets light filter through the leaves, giving them an almost translucent appearance.

When using your outdoor Christmas lights for parties try festooning them on fine wire between trees or along your porch.

You can also use your Christmas strings as border lights for flower beds. Simply sink them in a small trench between the

shielding turf and the planted border.

For most pleasing results, sockets should be spaced about nine inches apart. If yours are farther, you can tape them closer with weatherproof tape.

Conceal the lights in a shallow trench along the edge of the bed or behind a border of flowers.

And, don't overlook your Christmas spot and flood lights. In addition to the strings of Christmas lamps in the flower bed, the dramatic shadow effect at the corner of the house pictured above comes from a flood lamp concealed in the shrubbery. It is directed through the foliage at a grazing angle up on the house. Reflected light from the house, if it is white or light-toned, is sufficient to light the path.

Always place the light so that it cannot be seen directly and aim it upward so that its light passes through some of the foliage.

Or, try a pair of your Christmas projecting spotlights to emphasize the night-time shape and beauty of a favorite tree in your yard. Locate the bulbs in weather-proof adjustable sockets either in other nearby trees, or on your house, one on each side of the tree you want to light. Keep the bulbs out of view and, for a balanced effect, light must come from both sides.

Some trees are almost natural canopies and, if their foliage is light-colored, let them pose as lighted canopies at night. Simply hide a floodlamp, fastened in an upward position, in the tree it



OUTDOOR FURNITURE

Don't use regular house paint on outdoor furniture. Use outdoor enamel. House paint is usually made to chalk away slowly so that it cleans itself. If used on furniture it may chalk off on clothing.

The leaves will reflect the light softly downward and the effect will be like a giant lighted umbrella.

When the summer garden season is over, take your equipment inside and check it over carefully so it will be ready for the holidays.

If you're bothered by night insects, try using the new yellow enameled bulbs for outdoor lighting. These new bulbs are ideal for porches, over picnic tables, doorways and gardens, where you want to discourage night-flying insects.

There's no magic in the yellow bulb, but according to lighting specialists insects are less attracted to a yellow lamp than to a white bulb of equal wattage. Available in both 60 and 100-watt sizes, the bulbs have a glass coating which is "fixed" on the bulb so it won't wash off.

UNITED LUMBER CO.

offers \$2,500⁰⁰ for home repairs & remodeling

NO MONEY DOWN • 3 YEARS TO PAY

Call 713 for FREE ESTIMATES

Homeowners who make improvements, now, can borrow as much as \$2500 and take up to 36 months to repay the loan. When you improve your home you are increasing the value of three times the amount you spend!

ADD A ROOM

An extra room or a wing will provide needed space. Bring in your problems. Experienced guidance will save you money.

SCREEN ENCLOSE-PORCH

Enjoy summer in comfort of your screened-in porch or breezeway. Glass panels interchange for cool weather.

ASBESTOS SIDING

Give your home the protection it needs. The amount you spend now may save you hundreds of dollars later. Free estimates.

12 x 20 FT. GARAGE

A home for your automobile—needed space for storage, tools, toys or a workshop. Call us for plans and estimates.

WE BELIEVE:

That Sanford In The Next Few Months Faces The Greatest Opportunity For Growth In Our History.

Recent Announcements That Our Naval Air Station Will Increase Its Personnel By Approximately 1,000 Men Is Good News For All Of Sanford.

We Realize The Importance Of The Navy To Sanford And We Intend To Do Our Best To Help Provide Some Of The Homes They Will Need. Experience Shows That 500 Of These Men Will Bring Their Families And Will Need Housing.

THIS IS WHAT WE INTEND TO DO:

- 1. Today We Have Started Clearing The Land For Ten Lovely Three Bedroom Homes In Bel Air. These Homes Will Be Started By The End Of This Week And Will Be Completed By August 1st.*
- 2. June 12th. We Will Start Construction On Seventeen Three Bedroom, Two Bath Homes In Rose Court To Be Completed By August 15th.*
- 3. On June 15th. We Will Start Construction On 100 Homes In South Pinecrest. South Pinecrest As The Name Implies Is Immediately South Of The Beautiful New Pinecrest School. We Intend To Build Fifteen Two Bedroom And Eighty Five Three And Four Bedroom Homes.*

YES WE BELIEVE IN SANFORD:

And Its Opportunity For Growth

THANKS TO YOU WE HAVE ALREADY SOLD 27 OF OUR 31 HOMES IN PINECREST.

*Odham And Judor Inc.
Brailey Odham President*

Phone 2104 Or 244

Office 2000 West French Avenue

Shop and Save
In Sanford

The Sanford Herald

AN INDEPENDENT DAILY NEWSPAPER

VOLUME XLVI Established 1908 SANFORD, FLORIDA, WEDNESDAY JUNE 1, 1955 Associated Press Licensed Wire No. 200

Weather

Fair with little change in temperature through Thursday except partly cloudy with scattered showers, extreme southeast wind and haze. High this afternoon 84 to 86.

'Sugar-Coated Poison' Label Put On Release Of 4 American Airmen

TAIPEI, Formosa (AP)—Nationalist Chinese newspapers displayed bitterness against the United States today in discussing Red China's release of four American airmen. "Sugar-coated poison," sneered the Hsin Sheng Pao, which speaks for the Formosa provincial government. This was the general tone of the press which argued, as did the official Central Daily News, that the release would not reduce international tension but would only stir conflict among the Western Powers.

Strolling In Sanford

An initiation will be conducted at 8 p. m. tomorrow by the Elks Club following a 6:30 supper. Two new members are to be invested.

Pentagon To Test Time Requirement To Empty Building

WASHINGTON (AP)—The Pentagon is going to test the time it would take to empty the giant building of its 26,000 workers if enemy H-bombers headed this way. The experiment, untried before, will be a part of the June 15 Operation Alert which also includes elaborate plans for 15,000 selected employees from 30 Federal agencies to deploy to secret sites scattered around neighboring states.

Showdown Talks Are Last Resort

DETROIT (AP)—Labor peace in the booming auto industry hinged today on showdown talks with the Ford Motor Co. for a "warrior" contract but before a midnight strike deadline.

Death Toll Higher In Belated Reports

By THE ASSOCIATED PRESS
Belated reports of accidental deaths during the Memorial Day weekend from the already record toll still is low today.

Apparent Mixup Is Shown By Couple

OCALA (AP)—The elderly man and wife who killed three police officers in a gun battle at their home Saturday appeared confused and entered no pleas at their arraignment yesterday.

Potter Discusses Economic Aid

WASHINGTON (AP)—Sen. Potter (R-Mo.) said today that "for psychological reasons" the United States should channel its economic aid to foreign nations in the form of loans, not outright grants.

Stalemate Reached In Issue

A stalemate had been reached today in the annexation issue. In a telegram last night, Senator Douglas Stenstrom informed City Manager Warren Knowles that the legislative delegation is "unanimous in its decision on annexation" expressed last Thursday night.

Britain Threatened As Railroad Strike Enters Fourth Day

LONDON (AP)—Widespread unemployment within 48 hours threatened Britain today as the national railroad strike went into its fourth day.

Visit Won't Settle Outstanding Issues Between Countries

BLUED, Yugoslavia (AP)—The current visit of top Russian leaders to Yugoslavia will not settle all outstanding issues between the two Communist countries, an informed source says.

Russia, Japan Open Secret Negotiation For Peace Treaty

LONDON (AP)—Russia and Japan opened secret negotiations today for a World War II peace treaty. The conference also is intended to iron out disputes over territory, unreleased Japanese prisoners of war and other issues.

Major Reform Bill Ready For Action

TALLAHASSEE (AP)—One of the major governmental reform bills still before the Florida Legislature—the measure designed to take some of the politics out of road building—was ready for final action today.

Legislature Clears Way For Spending

TALLAHASSEE (AP)—The Florida Legislature almost finished clearing the way today for the state to spend more money than ever in a two-year period—enough money to give budget balancers a mild financial headache.

Potter Discusses Economic Aid

WASHINGTON (AP)—Sen. Potter (R-Mo.) said today that "for psychological reasons" the United States should channel its economic aid to foreign nations in the form of loans, not outright grants.

Conflicting Views Arise Over Verdict

New Postal Proposal Is Passed By Senate

WASHINGTON (AP)—The Senate today passed a bill to raise salaries of the 500,000 postal workers an average of 8 per cent after being assured it was acceptable to President Eisenhower.

Southern Leaders Object

WASHINGTON (AP)—Sharply conflicting views arose today over what local public school officials are likely to do about working out plans for ending racial segregation.

Installation Plans Of Lions Officers Discussed At Meet

Plans for the installation of new officers June 29 were discussed by the Sanford Lions Club at yesterday's luncheon meeting at the Yacht Club.

Dag Hammarskjold Renewing Efforts

UNITED NATIONS, N.Y. (AP)—Secretary General Dag Hammarskjold renewed his efforts through diplomatic channels today seeking the release of 41 American aviators still held in Red Chinese prisons.

Orlando Wins First In State Contest

GAINESVILLE (AP)—The city of Orlando won first prize in the state contest for sewage treatment plants and second among filtration plants in its population class.

Four Children Die In Fire At Home

AKRON, Ohio (AP)—Four children died early today in a fire at their home in Manchester, seven miles south of here.

Few Clues Left By Lone Gunman

DAYTON, Ohio (AP)—The Lord told me that banks and their presidents were the adversaries of God.

Farmers' Counsel Says He'll Prove Any Irregularity

BALTIMORE (AP)—An attempt will be made in federal court today to prove there was dirty work in the last referendum by which the country's wheat farmers voted in favor of acreage allotments.

Two GOP Senators Almost Sure Of Ike

WASHINGTON (AP)—Two Republican senators said today President Eisenhower's attitude toward his job makes it almost certain in their opinion that he will run again next year.

Pilots Scheduled To Meet Relatives Today In Hawaii

HONOLULU (AP)—Four U.S. fighter pilots newly freed from Chinese captivity were winging today toward a rendezvous in Hawaii with exuberant relatives.

Catholics, Police Clash Last Night

BUENOS AIRES (AP)—Roman Catholics demonstrated in support of the clergy in its conflict with the Argentine government clashed with police in four provinces last night. About 24 persons were reported jailed.

Reapportionment Bill Passes House

TALLAHASSEE (AP)—The House today passed 78 to 13 and sent back to the Senate a reapportionment bill giving Bay, Monroe, Sarasota and Manatee counties a senator apiece.

Four Children Die In Fire At Home

AKRON, Ohio (AP)—Four children died early today in a fire at their home in Manchester, seven miles south of here.

Few Clues Left By Lone Gunman

DAYTON, Ohio (AP)—The Lord told me that banks and their presidents were the adversaries of God.

Extension Seen For Many Years

WASHINGTON (AP)—Sharp conflicting views arose today over what local public school officials are likely to do about working out plans for ending racial segregation.

Installation Plans Of Lions Officers Discussed At Meet

Plans for the installation of new officers June 29 were discussed by the Sanford Lions Club at yesterday's luncheon meeting at the Yacht Club.

Dag Hammarskjold Renewing Efforts

UNITED NATIONS, N.Y. (AP)—Secretary General Dag Hammarskjold renewed his efforts through diplomatic channels today seeking the release of 41 American aviators still held in Red Chinese prisons.

Orlando Wins First In State Contest

GAINESVILLE (AP)—The city of Orlando won first prize in the state contest for sewage treatment plants and second among filtration plants in its population class.

Reapportionment Bill Passes House

TALLAHASSEE (AP)—The House today passed 78 to 13 and sent back to the Senate a reapportionment bill giving Bay, Monroe, Sarasota and Manatee counties a senator apiece.

Few Clues Left By Lone Gunman

DAYTON, Ohio (AP)—The Lord told me that banks and their presidents were the adversaries of God.

Few Clues Left By Lone Gunman

DAYTON, Ohio (AP)—The Lord told me that banks and their presidents were the adversaries of God.