



# 'We Care' Merchants Set Turkey Winners

## Bitter Battle Waged In Viet Highlands

### Area Deaths

**MRS. LUELLE GILBERT**, 63, of 1218 Oak Avenue, Sanford, died Saturday morning after a short illness.

Born in Dalton, Ga., she moved to Sanford in 1965. She was a member of Central Baptist Church.

Survivors are three daughters, Mrs. Lucy McGuire of Sanford, Mrs. Josephine Wernack of Sanford, and Mrs. Clemmie Wilson of New Orleans, La.; a son, Fred M. Gilbert of Sanford; a daughter, Mrs. Lillie Fortson of San Angelo, Tex.; seven grandchildren and eight great grandchildren.

Funeral arrangements are under direction of Brinson Funeral Home, Sanford.

**CLIFFORD E. BARBER**, 74, of East Floyd Avenue, Lake Mary, died Friday in Seminole Memorial Hospital.

He came to Lake Mary seven years ago from Ohio. He was a postal engineer, a member of the Knights of Pythias, Nelsonville, Ohio, and a member of the Christian Church.

Survivors are his wife, Mrs. Nell Barber of Lake Mary; two brothers, Shelby and Leslie Barber, and two sisters, Mrs. Floris Cope and Mrs. Harriet Spenser, all of Nelsonville.

The body was forwarded by Gramlow Funeral Home to Nelsonville for services and burial.

**MRS. ANNA M. NICHOLS**, 72, of 2011 S. Laurel Avenue, Sanford, died Sunday in Seminole Memorial Hospital.

She came to Sanford from Springs, Pa., and had been a permanent resident for the past two years and a winter resident prior to that time for 15 years. She was a Methodist and a member of the Woman's Christian Temperance Union.

She is survived by her husband, Charles A. Nichols of Sanford.

### Area Deaths

**MRS. ANNA M. NICHOLS**, 72, of 2011 S. Laurel Avenue, Sanford, died Sunday in Seminole Memorial Hospital.

She came to Sanford from Springs, Pa., and had been a permanent resident for the past two years and a winter resident prior to that time for 15 years.

She is survived by her husband, Charles A. Nichols of Sanford.

Survivors are her husband, Charles A. Nichols of Sanford.

Funeral arrangements are under direction of Brinson Funeral Home, Sanford.

Survivors are her husband, Charles A. Nichols of Sanford.

Funeral arrangements are under direction of Brinson Funeral Home, Sanford.

Survivors are her husband, Charles A. Nichols of Sanford.

Funeral arrangements are under direction of Brinson Funeral Home, Sanford.

Survivors are her husband, Charles A. Nichols of Sanford.

Funeral arrangements are under direction of Brinson Funeral Home, Sanford.



SAIGON, South Viet Nam (AP) — U.S. air cavalrymen clashed with North Vietnamese soldiers in close-quarter fighting today in the central highlands and reported killing 102 of the enemy.

The U.S. military command said the battle broke out when a platoon of the 1st Cavalry Airborne, Division was attacked at hand grenade range by a "sizeable" North Vietnamese force.

The platoon suffered heavy casualties before reinforcements arrived, a military spokesman said. Air strikes were called in to hammer at the attacking Communists.

The action, part of Operation Paul Revere 4, raged 22 miles south of the U.S. Army Special Forces camp at Phu Dren, southeast of North Vietnamese probes and skirmishes for more than a week.

Ground action was reported light elsewhere, but Korean marines operating near the South China Sea coast reported killing 30 Viet Cong Sunday in a two-and-a-half-hour battle seven miles northwest of Quang Ngai City.

A Korean spokesman said the marines clashed with a reinforced Viet Cong company of 200 men, the largest enemy unit they have met moving into the area last August.

In the air, Guam-based B-52 bombers staged three raids today on enemy positions in South Viet Nam, two of them in Communist War Zone C in Tay Ninh Province.

A few hours after the giant Stratofortress struck, 1,200 men of the U.S. 25th Infantry Division were lifted by helicopter into the target area, moving to within 1,800 yards of the Cambodian border.

Brig. Gen. G. G. O'Connor, the assistant division commander, said his forces would continue to search for the Viet Cong in the area "but it seems now that they have fled across the border for sanctuary."

In the central highlands fighting, a U.S. spokesman said the North Vietnamese hit the American cavalrymen initially from all sides.

## 27 'Lucky' Persons To Have A Joyous Thanksgiving Here

Twenty-seven lucky persons will be assured of having turkey for their Thanksgiving dinner, thanks to members of the "We Care" Sanford Downtown Merchants who gave away the free holiday birds in drawings Friday and Saturday.

Below is a list of the winners and the merchants who provided the prize:

- Florida State Bank — Mrs. Chas. E. Batts, 819 Escambia Drive;
- Chalmer — Mrs. J. M. Harper, Box 116, Geneva;
- Sweeney's Gift Shop — Susan Castrianni, 105 E. 11th St.;
- Wilson-Maier Furniture — Rose Velez, donated to Salvation Army;
- Cleaners — L. H. Alford, 2044 Holly Ave.;
- Touchette Drugstore — L. E. Jeffords, 820 Catalina Drive;
- Sanford Shoe Center — Mrs. G. D. Bishop Jr., 2404 Laurel Ave.;
- Western Auto — N. W. Ryan, Rt. 2, Box 541, Sanford;
- Re-Jay's — Katie Robinson, 1115 Hickory Ave.;
- Mather's Furniture — W. A. Ashby Jr., 2433 W. 18th St.;
- Sanford Herald — Mrs. E. E. Sparks, Hiltop Road, Casselberry;
- McCrory's — Osceola Jones, Rt. 1, Box 106, Sanford;
- Perkins' Men's Wear — Mrs. Phillip Boyd, 600 Camelia Court;
- Carroll's Furniture — Mrs. Earl Abbott, 100 Garrison Drive;
- Garrett's Department Store — Mrs. P. L. Dampier, 1207 Oak Ave.;
- Wilson-Maier Furniture — R. E. White Sr., 2515 Laurel Drive;
- Hollywood Shop — Mrs. Robert King, Old Monroe Road;
- Mary Esther — Mrs. Dorothy Corradi, 410 Elliott Ave.;
- Touchette Drugstore — Mrs. Robert King, 106 Westwood Court;
- Cowan's Department Store — Mrs. R. H. Taylor, 2 Wilson Street;
- Mary Carter Paint-Rose Lee Bradwell, P. O. Box 207, Lake Monroe;
- Smith's Shoe Store — Mrs. A. Von Rhee, 32 Columbine Trail, DeBary;
- Sanford Electric — Joseph A. Stewart, 814 Myrtle Ave.;
- Sanford Atlantic National Bank — H. I. Cockman, 1811 Adams Ave.;
- Smith's Shoes and Clothing — Mrs. Jewel Bailey, P. O. Box 106, Lake Monroe.

**Kiwanis Speaker**  
Dr. Henry A. Parker, pastor of the First Baptist Church in Orlando, will be the speaker at the meeting of the Kiwanis Club, Wednesday, bringing a message about Thanksgiving.

**Notice**  
IN THE COUNTY JUDGE'S COURT, SEMINOLE COUNTY, FLORIDA, FILE NO. 5145. STATE OF FLORIDA vs. HERBERT E. POOLE. RECALLED TO ALL PERSONS HAVING CLAIM OR DEMANDS AGAINST SAID DECEASED. You and each of you are hereby notified and required to file any claims and demands which you or either of you may have against said estate in the office of the County Judge of Seminole County, at his office in the Court House in Sanford, Florida, within six calendar months from the time of the first publication of this notice. Each claim of demand must be in writing and contain the place of residence and full postal address of the claimant and must be sworn to by the claimant, his agent or attorney, or the same shall be void.

**FOOD, RIDES, FUN AND GAMES** entertained hundreds of persons attending the All Souls Fall Festival, Saturday. In upper photo youngsters enjoy candy apples while riding the boat swings. Winner of the grand prize was Eugene Grammins of 5225 Country Club Road who took \$2,000 cash in lieu of the swimming pool. Proceeds from the festival are estimated at \$6,500.



## Public Education Study On Constitution Planned By League Of Women Voters

Just how much Florida voters know and understand about the proposed revision of the Florida constitution is being studied by the Florida League of Women Voters, with an eye toward instituting public education programs.

The league has been concerned with revision of Florida's constitution for 20 years and plans to conduct a public education campaign to help the public understand just what is involved, said Mrs. James E. Bierbeck, president of the Provisional League of Women Voters of Seminole County.

During the past week, a telephone questionnaire was conducted in 26 selected Florida communities, with questions designed to find out just how much voters know and understand about the subject.

"Purpose is to determine the public interest and attitude toward the proposed constitutional revision, to guide us in our efforts to inform the public. The public opinion poll is under the direction of Mrs. Walter Churchill, state president," concluded Mrs. Bierbeck.

The second draft of the revision commission was released Nov. 16. It will be presented to the state legislature in the spring for approval or further revision and to the voters for their approval in elections next fall.

**Thrill Your Child With A Letter From Santa**  
Visit Santa Post Office and select an anchoring FREE letter that will bring the wonder of Santa Claus to that special child. We will have it post-marked from Santa Claus, Indiana. It's our way of saying Merry Christmas.

**Sanford Atlantic National Bank**  
Member F.D.I.C.  
DOWNTOWN SANFORD

**NEW TELEPHONE DIRECTORY CLOSES SOON**  
Driftwood Circle Slates Workshop  
Workshop on Christmas decorations for members of the Driftwood Garden Circle is scheduled for 8:30 a.m. Tuesday at the Naval Air Station ballroom.

**Memo To Kids—Get Letters To Santa**  
Santa Post Office opened today in the lobby of Sanford Atlantic National Bank. President Howard Hodges has announced.

**Worth Knowing**  
A fellow said, "I was driving on a highway when I noticed my heat in sky-high." I figured I could get to a service station and wait on for another 20 minutes. When I didn't learn, I stopped steaming till several days later was that expansion and contraction had caused a crack in the block, and water was getting into my oil. I had pulled over at the first sign of overheating. I might have paid for a tow and replacement of a piece of hose, instead of a major overhaul. The moral is: Never, never drive with an overheated motor. We like to pass along valuable reminders like this one, and perhaps you'll give us a chance to prove our full value by giving us a call. Write us on a new or used car. Write to: MANNON JEEP SALES, 500 E. 2nd St., Ft. Pierce, Fla. 34942.

**Southern Bell**  
ACTION PEOPLE SHOP THE YELLOW PAGES

**WINN DIXIE FOOD STORES**  
The Smart Place To Go... For Good Things To Eat

**100 FREE STAMPS WITH THIS COUPON**  
**W-D BRAND GROUND BEEF**  
5 LB. PKG. \$1.99

**Cranberry S'ce 2/29**  
**Cranberry S'ce 2/39**  
**Pumpkin . . . 2/25**  
**Sweet Potatoes 4/1**  
**Marshmallow 2/49**  
**Fruit Cake . . . 99**  
**Stuffing Mix . . 29**  
**Farm Stuffing . . 31**

**TURKEYS** Lb. 39¢  
**Turkey Roast '3.39**  
**Drumsticks . . lb. 39¢**  
**Gizzards . . . lb. 29¢**

**POTATOES 10 49**  
**Orange Juice 6 95**  
**GREEN PEAS . . . 5/51**  
**BRUSSEL SPROUTS . 5/51**  
**WHOLE BABY LIMAS 5/51**  
**GREEN BEANS . . . 5/51**

**Thrifty Maid Ice Milk or SUPERBRAND SHERBERT Or ICE CREAM 2 1/2-GAL. CTNS. \$1.**

**POTATOES . . 3/1. DINNERS . . EACH 69¢**  
**MORTON PUMPKIN OR MINCE MEAT PIES . . . 3/1.**

**This week GET YOUR SHEFFIELD BONE WHITE Coffee Cup 9¢**  
with every \$5 purchase

**Flour . . . . . 5 45**  
**Shortening . . . 3-LB. TIN 59**  
**Mayonnaise . . . . 49**  
**Astor Coffee . . . 39**  
**Schlitz Beer . . . . \$1.09**  
**Pure Butter . . . 59**

**TURKEYS Lb. 39¢**  
**PORK CHOPS Lb. 59¢**  
**RIB ROAST**  
W-D BRAND U. S. CHOICE E-Z CARVE Lb. 88¢

**Baking Hens . . lb. 39¢**  
**Fresh Celery 19¢**  
**Oranges 8 49**  
**Lettuce . . 2/49**  
**Onions 3 29**

**JUICY APPLES . . 4 49**  
**POTATOES . . . 4 49**  
**CRANBERRIES . . . . 29**  
**CHILLED AMBROSIA 59**

**The Smart Place To Go... For Good Things To Eat**

**HOME NURSING SERVICE** of Seminole County been certified and approved for Medicare, as a participating home health care agency. Official plaque was presented to Mrs. Grace Fisher (center), director of the Home Nursing Service of Jack Rickles, field representative for the U. S. Office of Social Security.



**EXTRA STAMPS**  
50 EXTRA TOP VALUE STAMPS  
50 EXTRA TOP VALUE STAMPS  
100 EXTRA TOP VALUE STAMPS  
100 EXTRA TOP VALUE STAMPS

**WINN DIXIE**

### Guidance Is Program Topic For PTA

By JANE CASSELLBERRY  
The program for the South Seminole Junior High School Parent Teacher meetings for November was presented by the guidance department. Walter Deurum, Jr. spoke on group guidance and special activities. Miss Annette Peterson spoke on the testing program, and Mrs. Louise Gilpin spoke on scheduling students. They then answered questions from the audience. On display were the various kinds of audio-visual equipment used at the school. New plastic draperies have been installed in the classrooms so that audio-visual equipment can be put to better use by the teachers.

The \$400 budget was presented and approved. Items included are state and national PTA dues—\$200; postage for the newsletter, \$100; refreshments—\$60; stationery and stamps—\$10; registration fee for PTA convention—\$10; president's gift—\$10; and miscellaneous operating expenses—\$10.

The estimated income from the sale of turkey legs will be the only fund raising planned this year. Project for the year is to better inform the parents on the school program through the newsletter and PTA programs.

Representing the PTA at the state convention, Nov. 16-17, in Tampa, were Mrs. Thelma Householder and Mrs. Millard Kerwiner.

### NHS Project To Aid Little Red School

By JANE CASSELLBERRY  
The National Honor Society at South Seminole Junior High School is sponsoring a project to collect toys for the children at the Little Red School House in Sanford for mentally retarded children.

Boxes have been set up in the main office to receive donations.

Mrs. Jane Ford and Richard Miller are faculty advisers. The student council also has several projects planned. Members are in charge of the announcements and devotions at the beginning of the day.

They also are planning, in cooperation with the guidance department, an all school "dress-up day" this month. The student council feels that this effort will stimulate better manners and better effort in class. The physical education department will show films that day and not require students to dress out.

Another project is to pipe PM music into the cafeteria during lunch periods over the public address system. Penny boxes have been set up in which students can contribute to this endeavor.

A student-faculty football game is to be held at 7:30 p.m. Tuesday, at Lyman High School to raise money for the music equipment.

### Chiropractor Attends 52nd Annual Meet

Dr. and Mrs. Eugene H. Elmsley, of 228 Brighton Way, Casselberry, have returned home from attending the fifty-second annual convention and educational seminar of the Florida Chiropractic Association in Jacksonville.

Dr. Elmsley was one of 500 chiropractors and their guests who attended educational lectures on the latest methods of diagnosis and management of commonly encountered syndromes of the spine and extremities and the latest methods of X-ray and analysis and interpretation of X-rays. This is part of the continuing education that all chiropractic physicians in the State of Florida take part in every year.

There were further discussions on the health care problems of the State of Florida and the role of the chiropractic physician in helping to provide better health care for all the citizens of Florida.

# FREE!

This delicious FAMILY-SIZE turkey is yours ABSOLUTELY FREE with the purchase of any gas or electric range purchased from J.M. Fields and delivered before Thanksgiving Day. Big enough for a large family...with seconds!

Pre-Holiday

SPECIAL

## J.M. Fields

## Save

### ON MAGIC CHEF GAS or ELECTRIC RANGES

Magic Chef ranges are precision-built with every wanted feature for your convenience... plus ultra-modern good looks that bring out the beauty of every kitchen's decorating scheme plus colors to match. Features include: removable rack, turners, top front controls, removable oven doors and liners, deluxe chrome door handles, appliance outlet, complete oven racks and huge-capacity storage drawer. And... they all clean easily! There's a wide selection of gas and electric ranges at J.M. Fields at low, low prices that will amaze you!

Convenience... plus ultra-modern good looks that bring out the beauty of every kitchen's decorating scheme plus colors to match. Features include: removable rack, turners, top front controls, removable oven doors and liners, deluxe chrome door handles, appliance outlet, complete oven racks and huge-capacity storage drawer. And... they all clean easily! There's a wide selection of gas and electric ranges at J.M. Fields at low, low prices that will amaze you!

## Save

### ON 1967 HANDCRAFTED ZENITH 25" COLOR

Choose from beautifully crafted table models, consoles, "to-boys" styles for every decor. Contemp., Early American, Mediterranean, Italian Provincial, and more! Chassis handwired, handcrafted for greater dependability, fewer service problems.

## Save

### ON 1967 NEW VISTA RCA VICTOR 25" COLOR

Perfect blend of mastercrafted cabinetry, dependable service. That's what you'll find in RCA Victor 25" Color TV. Choose from huge selection of styles to complement all decorating schemes.

## Save

### ON 25" COLOR CONSOLE TV

Uncluttered contemporary styling in genuine walnut veneers and select solids. Features include 295 sq. in. picture viewing area and all 82-channel UHF-VHF tuning.

# 438<sup>88</sup>

J.M. Fields QUALITY DISCOUNT

## Save

### ON 25" COLOR TV

PAINSTAKINGLY ENGINEERED TO PRODUCE THE clearest, truest color pictures. This precision-engineered color tube produces the clearest, truest color picture. Frosted and bonded for distortion-free, no-glare viewing.

## Save

### ON 25" COLOR TV

America's most efficient color TV chassis, providing 25,000 volts of required picture power. Featuring power transformer, 3 tubes of wide band IF, keyed AGC and handwired and etched circuits.

## Save

### ON 1967 NEW VISTA RCA VICTOR 25" COLOR

Perfect blend of mastercrafted cabinetry, dependable service. That's what you'll find in RCA Victor 25" Color TV. Choose from huge selection of styles to complement all decorating schemes.

## Save

### ON 1967 HANDCRAFTED ZENITH 25" COLOR

Choose from beautifully crafted table models, consoles, "to-boys" styles for every decor. Contemp., Early American, Mediterranean, Italian Provincial, and more! Chassis handwired, handcrafted for greater dependability, fewer service problems.

## Save

### ON 25" COLOR CONSOLE TV

Uncluttered contemporary styling in genuine walnut veneers and select solids. Features include 295 sq. in. picture viewing area and all 82-channel UHF-VHF tuning.

# 438<sup>88</sup>

J.M. Fields QUALITY DISCOUNT

## Save

### ON 25" COLOR TV

PAINSTAKINGLY ENGINEERED TO PRODUCE THE clearest, truest color pictures. This precision-engineered color tube produces the clearest, truest color picture. Frosted and bonded for distortion-free, no-glare viewing.

## Save

### ON 1967 NEW VISTA RCA VICTOR 25" COLOR

Perfect blend of mastercrafted cabinetry, dependable service. That's what you'll find in RCA Victor 25" Color TV. Choose from huge selection of styles to complement all decorating schemes.

## Save

### ON 1967 HANDCRAFTED ZENITH 25" COLOR

Choose from beautifully crafted table models, consoles, "to-boys" styles for every decor. Contemp., Early American, Mediterranean, Italian Provincial, and more! Chassis handwired, handcrafted for greater dependability, fewer service problems.

## Save

### ON 25" COLOR CONSOLE TV

Uncluttered contemporary styling in genuine walnut veneers and select solids. Features include 295 sq. in. picture viewing area and all 82-channel UHF-VHF tuning.

# 438<sup>88</sup>

J.M. Fields QUALITY DISCOUNT

## Save

### ON 25" COLOR TV

PAINSTAKINGLY ENGINEERED TO PRODUCE THE clearest, truest color pictures. This precision-engineered color tube produces the clearest, truest color picture. Frosted and bonded for distortion-free, no-glare viewing.

## Save

### ON 1967 NEW VISTA RCA VICTOR 25" COLOR

Perfect blend of mastercrafted cabinetry, dependable service. That's what you'll find in RCA Victor 25" Color TV. Choose from huge selection of styles to complement all decorating schemes.

## Save

### ON 1967 HANDCRAFTED ZENITH 25" COLOR

Choose from beautifully crafted table models, consoles, "to-boys" styles for every decor. Contemp., Early American, Mediterranean, Italian Provincial, and more! Chassis handwired, handcrafted for greater dependability, fewer service problems.

## Save

### ON 25" COLOR CONSOLE TV

Uncluttered contemporary styling in genuine walnut veneers and select solids. Features include 295 sq. in. picture viewing area and all 82-channel UHF-VHF tuning.

# 438<sup>88</sup>

J.M. Fields QUALITY DISCOUNT

## Save

### ON 25" COLOR TV

PAINSTAKINGLY ENGINEERED TO PRODUCE THE clearest, truest color pictures. This precision-engineered color tube produces the clearest, truest color picture. Frosted and bonded for distortion-free, no-glare viewing.

## Save

### ON 1967 NEW VISTA RCA VICTOR 25" COLOR

Perfect blend of mastercrafted cabinetry, dependable service. That's what you'll find in RCA Victor 25" Color TV. Choose from huge selection of styles to complement all decorating schemes.

## Save

### ON 1967 HANDCRAFTED ZENITH 25" COLOR

Choose from beautifully crafted table models, consoles, "to-boys" styles for every decor. Contemp., Early American, Mediterranean, Italian Provincial, and more! Chassis handwired, handcrafted for greater dependability, fewer service problems.

## Save

### ON 25" COLOR CONSOLE TV

Uncluttered contemporary styling in genuine walnut veneers and select solids. Features include 295 sq. in. picture viewing area and all 82-channel UHF-VHF tuning.

# 438<sup>88</sup>

J.M. Fields QUALITY DISCOUNT

## Save

### ON 25" COLOR TV

PAINSTAKINGLY ENGINEERED TO PRODUCE THE clearest, truest color pictures. This precision-engineered color tube produces the clearest, truest color picture. Frosted and bonded for distortion-free, no-glare viewing.

## Save

### ON 1967 NEW VISTA RCA VICTOR 25" COLOR

Perfect blend of mastercrafted cabinetry, dependable service. That's what you'll find in RCA Victor 25" Color TV. Choose from huge selection of styles to complement all decorating schemes.

## Save

### ON 1967 HANDCRAFTED ZENITH 25" COLOR

Choose from beautifully crafted table models, consoles, "to-boys" styles for every decor. Contemp., Early American, Mediterranean, Italian Provincial, and more! Chassis handwired, handcrafted for greater dependability, fewer service problems.

## Save

### ON 25" COLOR CONSOLE TV

Uncluttered contemporary styling in genuine walnut veneers and select solids. Features include 295 sq. in. picture viewing area and all 82-channel UHF-VHF tuning.

# 438<sup>88</sup>

J.M. Fields QUALITY DISCOUNT

## Save

### ON 25" COLOR TV

PAINSTAKINGLY ENGINEERED TO PRODUCE THE clearest, truest color pictures. This precision-engineered color tube produces the clearest, truest color picture. Frosted and bonded for distortion-free, no-glare viewing.

## Save

### ON 1967 NEW VISTA RCA VICTOR 25" COLOR

Perfect blend of mastercrafted cabinetry, dependable service. That's what you'll find in RCA Victor 25" Color TV. Choose from huge selection of styles to complement all decorating schemes.

## Save

### ON 1967 HANDCRAFTED ZENITH 25" COLOR

Choose from beautifully crafted table models, consoles, "to-boys" styles for every decor. Contemp., Early American, Mediterranean, Italian Provincial, and more! Chassis handwired, handcrafted for greater dependability, fewer service problems.

## Save

### ON 25" COLOR CONSOLE TV

Uncluttered contemporary styling in genuine walnut veneers and select solids. Features include 295 sq. in. picture viewing area and all 82-channel UHF-VHF tuning.

# 438<sup>88</sup>

J.M. Fields QUALITY DISCOUNT

## Save

### ON 25" COLOR TV

PAINSTAKINGLY ENGINEERED TO PRODUCE THE clearest, truest color pictures. This precision-engineered color tube produces the clearest, truest color picture. Frosted and bonded for distortion-free, no-glare viewing.

## Save

### ON 1967 NEW VISTA RCA VICTOR 25" COLOR

Perfect blend of mastercrafted cabinetry, dependable service. That's what you'll find in RCA Victor 25" Color TV. Choose from huge selection of styles to complement all decorating schemes.

## Save

### ON 1967 HANDCRAFTED ZENITH 25" COLOR

Choose from beautifully crafted table models, consoles, "to-boys" styles for every decor. Contemp., Early American, Mediterranean, Italian Provincial, and more! Chassis handwired, handcrafted for greater dependability, fewer service problems.

## Save

### ON 25" COLOR CONSOLE TV

Uncluttered contemporary styling in genuine walnut veneers and select solids. Features include 295 sq. in. picture viewing area and all 82-channel UHF-VHF tuning.

# 438<sup>88</sup>

J.M. Fields QUALITY DISCOUNT

## Save

### ON 25" COLOR TV

PAINSTAKINGLY ENGINEERED TO PRODUCE THE clearest, truest color pictures. This precision-engineered color tube produces the clearest, truest color picture. Frosted and bonded for distortion-free, no-glare viewing.

## Save

### ON 1967 NEW VISTA RCA VICTOR 25" COLOR

Perfect blend of mastercrafted cabinetry, dependable service. That's what you'll find in RCA Victor 25" Color TV. Choose from huge selection of styles to complement all decorating schemes.

## Save

### ON 1967 HANDCRAFTED ZENITH 25" COLOR

Choose from beautifully crafted table models, consoles, "to-boys" styles for every decor. Contemp., Early American, Mediterranean, Italian Provincial, and more! Chassis handwired, handcrafted for greater dependability, fewer service problems.

## Save

### ON 25" COLOR CONSOLE TV

Uncluttered contemporary styling in genuine walnut veneers and select solids. Features include 295 sq. in. picture viewing area and all 82-channel UHF-VHF tuning.

# 438<sup>88</sup>

J.M. Fields QUALITY DISCOUNT

## Save

### ON 25" COLOR TV

PAINSTAKINGLY ENGINEERED TO PRODUCE THE clearest, truest color pictures. This precision-engineered color tube produces the clearest, truest color picture. Frosted and bonded for distortion-free, no-glare viewing.

## Save

### ON 1967 NEW VISTA RCA VICTOR 25" COLOR

Perfect blend of mastercrafted cabinetry, dependable service. That's what you'll find in RCA Victor 25" Color TV. Choose from huge selection of styles to complement all decorating schemes.

## Save

### ON 1967 HANDCRAFTED ZENITH 25" COLOR

Choose from beautifully crafted table models, consoles, "to-boys" styles for every decor. Contemp., Early American, Mediterranean, Italian Provincial, and more! Chassis handwired, handcrafted for greater dependability, fewer service problems.

## Save

### ON 25" COLOR CONSOLE TV

Uncluttered contemporary styling in genuine walnut veneers and select solids. Features include 295 sq. in. picture viewing area and all 82-channel UHF-VHF tuning.

# 438<sup>88</sup>

J.M. Fields QUALITY DISCOUNT

## Save

### ON 25" COLOR TV

PAINSTAKINGLY ENGINEERED TO PRODUCE THE clearest, truest color pictures. This precision-engineered color tube produces the clearest, truest color picture. Frosted and bonded for distortion-free, no-glare viewing.

## Save

### ON 1967 NEW VISTA RCA VICTOR 25" COLOR

Perfect blend of mastercrafted cabinetry, dependable service. That's what you'll find in RCA Victor 25" Color TV. Choose from huge selection of styles to complement all decorating schemes.

## Save

### ON 1967 HANDCRAFTED ZENITH 25" COLOR

Choose from beautifully crafted table models, consoles, "to-boys" styles for every decor. Contemp., Early American, Mediterranean, Italian Provincial, and more! Chassis handwired, handcrafted for greater dependability, fewer service problems.

## Save

### ON 25" COLOR CONSOLE TV

Uncluttered contemporary styling in genuine walnut veneers and select solids. Features include 295 sq. in. picture viewing area and all 82-channel UHF-VHF tuning.

# 438<sup>88</sup>

J.M. Fields QUALITY DISCOUNT

## Save

### ON 25" COLOR TV

PAINSTAKINGLY ENGINEERED TO PRODUCE THE clearest, truest color pictures. This precision-engineered color tube produces the clearest, truest color picture. Frosted and bonded for distortion-free, no-glare viewing.

## Save

### ON 1967 NEW VISTA RCA VICTOR 25" COLOR

Perfect blend of mastercrafted cabinetry, dependable service. That's what you'll find in RCA Victor 25" Color TV. Choose from huge selection of styles to complement all decorating schemes.

## Save

### ON 1967 HANDCRAFTED ZENITH 25" COLOR

Choose from beautifully crafted table models, consoles, "to-boys" styles for every decor. Contemp., Early American, Mediterranean, Italian Provincial, and more! Chassis handwired, handcrafted for greater dependability, fewer service problems.

## Save

### ON 25" COLOR CONSOLE TV

Uncluttered contemporary styling in genuine walnut veneers and select solids. Features include 295 sq. in. picture viewing area and all 82-channel UHF-VHF tuning.

# 438<sup>88</sup>

J.M. Fields QUALITY DISCOUNT

## Save

### ON 25" COLOR TV

PAINSTAKINGLY ENGINEERED TO PRODUCE THE clearest, truest color pictures. This precision-engineered color tube produces the clearest, truest color picture. Frosted and bonded for distortion-free, no-glare viewing.

## Save

### ON 1967 NEW VISTA RCA VICTOR 25" COLOR

Perfect blend of mastercrafted cabinetry, dependable service. That's what you'll find in RCA Victor 25" Color TV. Choose from huge selection of styles to complement all decorating schemes.

## Save

### ON 1967 HANDCRAFTED ZENITH 25" COLOR

Choose from beautifully crafted table models, consoles, "to-boys" styles for every decor. Contemp., Early American, Mediterranean, Italian Provincial, and more! Chassis handwired, handcrafted for greater dependability, fewer service problems.

## Save

### ON 25" COLOR CONSOLE TV

Uncluttered contemporary styling in genuine walnut veneers and select solids. Features include 295 sq. in. picture viewing area and all 82-channel UHF-VHF tuning.

# 438<sup>88</sup>

J.M. Fields QUALITY DISCOUNT

## Save

### ON 25" COLOR TV

PAINSTAKINGLY ENGINEERED TO PRODUCE THE clearest, truest color pictures. This precision-engineered color tube produces the clearest, truest color picture. Frosted and bonded for distortion-free, no-glare viewing.

## Save

### ON 1967 NEW VISTA RCA VICTOR 25" COLOR

Perfect blend of mastercrafted cabinetry, dependable service. That's what you'll find in RCA Victor 25" Color TV. Choose from huge selection of styles to complement all decorating schemes.

## Save

### ON 1967 HANDCRAFTED ZENITH 25" COLOR

Choose from beautifully crafted table models, consoles, "to-boys" styles for every decor. Contemp., Early American, Mediterranean, Italian Provincial, and more! Chassis handwired, handcrafted for greater dependability, fewer service problems.

## Save

### ON 25" COLOR CONSOLE TV

Uncluttered contemporary styling in genuine walnut veneers and select solids. Features include 295 sq. in. picture viewing area and all 82-channel UHF-VHF tuning.

# 438<sup>88</sup>

J.M. Fields QUALITY DISCOUNT

## Save

### ON 25" COLOR TV

PAINSTAKINGLY ENGINEERED TO PRODUCE THE clearest, truest color pictures. This precision-engineered color tube produces the clearest, truest color picture. Frosted and bonded for distortion-free, no-glare viewing.

## Save

### ON 1967 NEW VISTA RCA VICTOR 25" COLOR

Perfect blend of mastercrafted cabinetry, dependable service. That's what you'll find in RCA Victor 25" Color TV. Choose from huge selection of styles to complement all decorating schemes.

## Save

### ON 1967 HANDCRAFTED ZENITH 25" COLOR

Choose from beautifully crafted table models, consoles, "to-boys" styles for every decor. Contemp., Early American, Mediterranean, Italian Provincial, and more! Chassis handwired, handcrafted for greater dependability, fewer service problems.

## Save

### ON 25" COLOR CONSOLE TV

Uncluttered contemporary styling in genuine walnut veneers and select solids. Features include 295 sq. in. picture viewing area and all 82-channel UHF-VHF tuning.

# 438<sup>88</sup>

J.M. Fields QUALITY DISCOUNT

## Save

### ON 25" COLOR TV

PAINSTAKINGLY ENGINEERED TO PRODUCE THE clearest, truest color pictures. This precision-engineered color tube produces the clearest, truest color picture. Frosted and bonded for distortion-free, no-glare viewing.

## Save

### ON 1967 NEW VISTA RCA VICTOR 25" COLOR

Perfect blend of mastercrafted cabinetry, dependable service. That's what you'll find in RCA Victor 25" Color TV. Choose from huge selection of styles to complement all decorating schemes.

## Save

### ON 1967 HANDCRAFTED ZENITH 25" COLOR

Choose from beautifully crafted table models, consoles, "to-boys" styles for every decor. Contemp., Early American, Mediterranean, Italian Provincial, and more! Chassis handwired, handcrafted for greater dependability, fewer service problems.

## Save

### ON 25" COLOR CONSOLE TV

Uncluttered contemporary styling in genuine walnut veneers and select solids. Features include 295 sq. in. picture viewing area and all 82-channel UHF-VHF tuning.

# 438<sup>88</sup>

J.M. Fields QUALITY DISCOUNT

## Save

### ON 25" COLOR TV

PAINSTAKINGLY ENGINEERED TO PRODUCE THE clearest, truest color pictures. This precision-engineered color tube produces the clearest, truest color picture. Frosted and bonded for distortion-free, no-glare viewing.

## Save

### ON 1967 NEW VISTA RCA VICTOR 25" COLOR

Perfect blend of mastercrafted cabinetry, dependable service. That's what you'll find in RCA Victor 25" Color TV. Choose from huge selection of styles to complement all decorating schemes.

## Save

### ON 1967 HANDCRAFTED ZENITH 25" COLOR

Choose from beautifully crafted table models, consoles, "to-boys" styles for every decor. Contemp., Early American, Mediterranean, Italian Provincial, and more! Chassis handwired, handcrafted for greater dependability, fewer service problems.

## Save

### ON 25" COLOR CONSOLE TV

Uncluttered contemporary styling in genuine walnut veneers and select solids. Features include 295 sq. in. picture viewing area and all 82-channel UHF-VHF tuning.

# 438<sup>88</sup>

J.M. Fields QUALITY DISCOUNT

## Save

### ON 25" COLOR TV

PAINSTAKINGLY ENGINEERED TO PRODUCE THE clearest, truest color pictures. This precision-engineered color tube produces the clearest, truest color picture. Frosted and bonded for distortion-free, no-glare viewing.

## Save

### ON 1967 NEW VISTA RCA VICTOR 25" COLOR

Perfect blend of mastercrafted cabinetry, dependable service. That's what you'll find in RCA Victor 25" Color TV. Choose from huge selection of styles to complement all decorating schemes.

## Save

### ON 1967 HANDCRAFTED ZENITH 25" COLOR

Choose from beautifully crafted table models, consoles, "to-boys" styles for every decor. Contemp., Early American, Mediterranean, Italian Provincial, and more! Chassis handwired, handcrafted for greater dependability, fewer service problems.

## Save

### ON 25" COLOR CONSOLE TV

Uncluttered contemporary styling in genuine walnut veneers and select solids. Features include 295 sq. in. picture viewing area and all 82-channel UHF-VHF tuning.

# 438<sup>88</sup>

J.M. Fields QUALITY

# Thanksgiving Buys



"KAISER" HEAVY-DUTY  
**ALUMINUM FOIL**  
 ROLL  
**47¢**  
 (LIMIT: ONE WITH \$5.00 ORDER)

MORE WHITE MEAT  
 BROAD BREASTED  
**ARMOUR** GRADE "A" QUICK FROZEN  
**TURKEYS**  
 (10-14 LBS.) (16-24 LBS.)  
 ☆ **HENS** ☆ **TOMS**  
 LB. LB.  
**38¢ 35¢**

FROZEN FOODS  
 "MORTON'S"  
**PUMPKIN PIE** **MINCE PIE**  
 20-OZ. EACH  
**29¢**  
 (Limit: 2)

"PET RITZ" PKG. OF 2 **39¢**  
 "FOUR FISHERMEN" 8-OZ. PKG. **39¢**  
 "MCKENZIE" FORD HOOK LIMAS, POLE BEANS, SPECKLED BUTTER BEANS, CREAM PIES.  
**2 24-OZ. POLY BAGS 89¢**

NO BONES • NO WASTE  
**ARMOUR**  
**CANNED HAM** 4-LB. CAN **\$3.78**  
 "ARMOUR STAR" **BAKING HENS** LB. **38¢**  
 "LEAN" WESTERN BOSTON BUTT LB. **58¢**  
 "LEAN" WESTERN PORK ROAST LB. **48¢**  
 "LEAN" WESTERN PORK SHOULDER LB. **48¢**

"EVERFRESH" **DINNER ROLLS** 2 PKGS. OF 12 **25¢**  
 "EVERFRESH" **BREAD** 4 20-OZ. LOAVES **95¢**

Fresh from Our **BAKERY**  
 "OVEN GOLD"  
**FRUIT CAKE**  
 3-LB. RING  
**99¢**

"MIRACLE WHIP" SALAD **DRESSING** QUART JAR **37¢**  
 (LIMIT: 1 WITH \$5.00 ORDER)  
 "GALA" ASSORTED **TOWELS** JUMBO ROLL **29¢**  
 "EVERFRESH" POTATO **CHIPS** 9-OZ. TWIN-PAK **38¢**  
 "SUPREME" HOLLAND DUTCH **ICE CREAM** 1/2 GAL. **57¢**

"KLEENEX" DINNER **NAPKINS** 50 CT. PKG. **25¢**  
 SCHLITZ **BEER** 6 12-OZ. CANS **\$1.09**

**FIXINS & FEASTIN!**

"SUNSHINE" PICKLED Peaches NO. 2 1/2 JAR <b>39¢</b>	"TRELIS" Peas 6 NO. 303 CANS <b>\$1.00</b>
"MARTI" THROWN STUFFED Olives 5 3/4-OZ. JAR <b>45¢</b>	"RED DART" CUT Green Beans 8 NO. 303 CANS <b>\$1.00</b>
Pumpkin 2 NO. 303 CANS <b>29¢</b>	"SHURFINE" Flour 5-LB. BAG <b>49¢</b>
"BORDEN'S" NON-SUCH Mince Meat 9-OZ. PKG. <b>29¢</b>	"MONOGRAM" Rice 3-LB. BAG <b>39¢</b>
"FRENCH'S" EXTRACT Vanilla 1/2-OZ. BTL. <b>19¢</b>	"LARA LYNN" Saltines LB. PKG. <b>19¢</b>
"FRENCH'S" POULTRY Seasoning 1-OZ. CAN <b>19¢</b>	"PEPPERIDGE FARM" STUFFING Mix 8-OZ. PKG. <b>31¢</b>
"3 DIAMONDS" SLICED Pineapple 4 NO. 2 CANS <b>\$1.00</b>	"SHURFINE" Popcorn 2-LB. BAG <b>29¢</b>
"BRUCE'S" CUT Yams 4 NO. 2 1/2 CANS <b>\$1.00</b>	"WYLLER'S" Soup Mixes REG. PKG. <b>10¢</b>
"SUNLITE" Tomatoes 7 NO. 303 CANS <b>\$1.00</b>	"SHURFINE" Pear Halves NO. 303 CAN <b>29¢</b>

# from TURKEYS to PIES!

PARK AVE. AT 25th ST.  
**STORE HOURS**  
 MON. - THURS. 8 A.M. - 7 P.M.  
 FRIDAY 8 A.M. - 9 P.M.  
 SATURDAY 8 A.M. - 8 P.M.  
 SUNDAY 8 A.M. - 6 P.M.

QUANTITY RIGHTS RESERVED

"CHASE & SANBORN" ALL GRINDS  
**COFFEE** LB. CAN **37¢**  
 (LIMIT: ONE WITH YOUR \$5. OR MORE FOOD ORDER PLEASE!)

"THE PREMIUM SHORTENING"  
**SNOWDRIFT** 3-LB. CAN **47¢**  
 (LIMIT: ONE WITH YOUR \$5. OR MORE FOOD ORDER PLEASE!)

DETERGENT  
**CHEER** GIANT PACKAGE **47¢**  
 (LIMIT: ONE WITH YOUR \$5. OR MORE FOOD ORDER PLEASE!)

OPEN SUNDAY 8 A.M. TO 6 P.M.

"OVEN-READY" U.S. "CHOICE" FLAVOR-AGED BEEF  
 SHOULDER OR **RIB ROAST**  
 Lb. **78¢**



DAIRY FOODS  
 WILSON'S **BUTTER** LB. PKG. (Quarters) **57¢**  
 (LIMIT: ONE WITH YOUR \$5.00 OR MORE FOOD ORDER PLEASE!)

CHUCK STEAK LB. **58¢**  
 SIRLOIN ROUND STEAK LB. **88¢**  
 SWISS CLUB STEAK LB. **78¢**  
 RIB or FAMILY STEAK LB. **78¢**

POT or BONELESS ROUND **ROAST** LB. **68¢**

"OSAGE" HALVES  
**PEACHES** NO. 2 1/2 CAN **19¢**  
 (LIMIT: 4, WITH \$5. OR MORE FOOD ORDER PLEASE!)

"MIRACLE WHIPPED" QUARTERS **OLEO** LB. PKG. **29¢**  
 FLORIDA GRADE "A" **EGGS** 2 DOZ. **89¢**  
 "SHURFINE" BISCUITS 5 8-OZ. CANS **39¢**  
 KRAFT'S "PHILADELPHIA" CREAM CHEESE 8-OZ. PKG. **25¢**  
 (LIMIT: 2 WITH \$5.00 ORDER)

FRESH! "100% PURE" GROUND **BEEF** 4 LBS. **\$1.78**  
 "LYKES" PURE PORK **SAUSAGE** LB. **39¢**  
 FLA. GRADE "A" FAMILY PAK **FRYERS** 5 LBS. **\$1.98**  
 "SUGAR CREEK" ALL MEAT **WIENERS** 12-OZ. PKG. **39¢**  
 "ARMOUR STAR" QUICK FROZEN **TURKEY GIBLETS** LB. **48¢**

For your Thanksgiving

- "ARMOUR STAR" QUICK FROZEN (6-9 LBS.) **STUFFED TURKEYS**
- "ARMOUR STAR" QUICK FROZEN (5-7 LBS.) **GEESSE**
- "ARMOUR STAR" QUICK FROZEN (4-7 LBS.) **LONG ISLAND DUCKS**
- "ARMOUR STAR" QUICK FROZEN **CAPONS**
- "ARMOUR STAR" **SMOKED HAMS**
- "ARMOUR STAR" **SMOKED PICNICS**
- FRESH "PICNIC SHOULDER" **PORK ROAST**
- "PORK ROAST" **BOSTON BUTT**
- "FRESH" **SELECT OYSTERS**
- "QUICK FROZEN" **CHICKEN GIZZARDS**
- "QUICK FROZEN" **CHICKEN LIVERS**
- "OLD FASHIONED" **COUNTRY HAMS**

Farm Fresh **PRODUCE**  
 U.S. NO. 1 WHITE **POTATOES** 10 LB. KRAFT BAG **49¢**  
 FRESH YELLOW **SQUASH** 2 LBS. **29¢**  
 "FRESH 'N CRISP" **CELERY** 2 STALKS **25¢**  
 U.S. NO. 1 "YELLOW" **ONIONS** 3 LB. CELLO BAG **29¢**  
 "FIRM 'N RIPE" **TOMATOES** 2 LBS. **39¢**  
 "ROME" COOKING **APPLES** 4 LB. CELLO BAG **49¢**  
 "KRAFT" FRESH ORANGE **JUICE** 1/2 GAL. **69¢**  
 "OCEAN SPRAY" FRESH **CRANBERRIES** LB. BOX **29¢**

HEALTH & BEAUTY AIDS  
 "YASLINE" **HAIR TONIC** LARGE BOTTLE **59¢**  
 "CREMULSION" **COUGH SYRUP** REG. BTL. **53¢**

# Down With The Signs

Few things are more unsightly, and more useless, than "left-up" political signs following an election. It is interesting to note that a concerted effort has been made locally to clean up these signs as they are taken down in mass. We commend those behind this effort and trust the cooperation will be extended on a county-wide basis. All candidates alike, the elected and

the defeated, have a common duty in seeing that these signs are removed as soon as practical thus commanding the respect for which the sign was intended, even if after it has served its purpose. With our tourist season approaching we owe it to our "image" to haul down these signs before the week is out and before they become "eyesores" to the motoring public.

# You All Come!

It's County Fair time again in Seminole County. The annual fair opened today with a week's activity planned including Children's Day tomorrow and Wednesday and Merchants' Day Thursday. A lot of work by the American Legion goes into this affair and all of us in the county should take advantage of the many exhibits and livestock shows.

The fair lasts throughout the entire week... so take advantage of it. The fair is well worth the few hours that are needed to view the displays and exhibits. There is an excellent midway, some fine free entertainment and the admission prices have been set low enough to meet the limitations of most pocketbooks. Plan now to attend the fair.

# Cash? Can't Remember It

Bankers tell us it won't be long now until we'll be using a "universal automatic credit card" in place of money. Under this system, everyone will have a number and one credit card. Yes, ONE!

No cash, no checks. Just this single card which can be used for anything and everything - groceries, rent, clothes, entertainment, travel, loans, taxes, the works.

This is so far out it leaves most of us dizzy. But the bankers do say one thing in relation to this development that comes in on our way length. They say that cash is already outdated.

If by "outdated" they mean that cash is too old-fashioned to cope with today's rising prices, we dig them loud and clear. So bring on that magic credit card, gentlemen - and make it out of rubber so it'll stretch!

# Thought For Today

Why do you pass judgment on your brother? Or you, why do you despise your brother? For we shall all stand before the judgment seat of God - Romans 14:10.

Kings and their subjects, masters and slaves, find a common level in two places - at the foot of the cross, and in the grave. - Charles Colton, English epigrammatic writer.

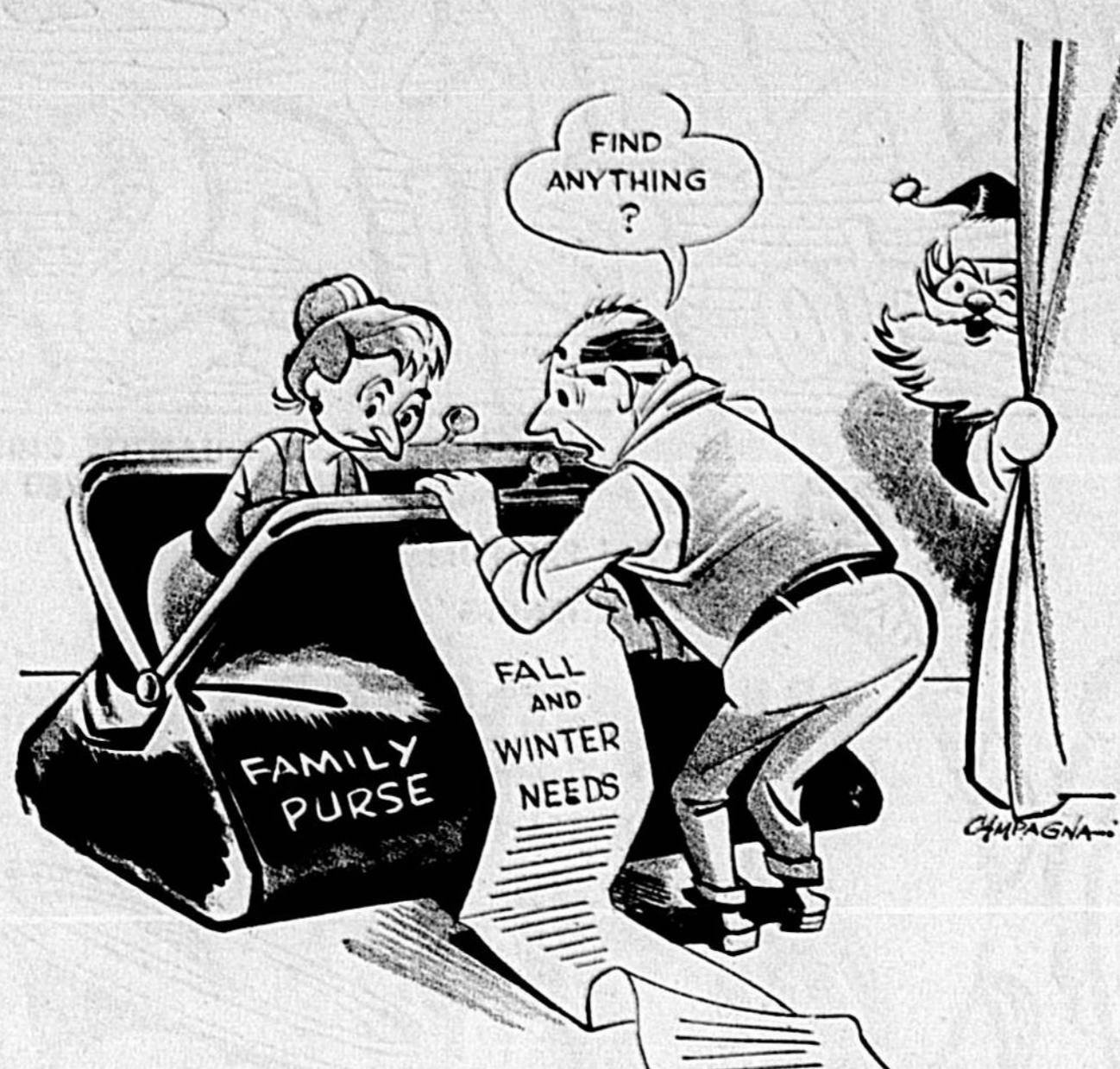
# Lyle Wilson Says:

# Share-The-Work Operation

The first and continuing job of the new 90th Congress will be to decide whether the United States can prosecute a big war in Southeast Asia and simultaneously continue to support the Great Society in the style to which it has become accustomed.

Spending will be contained in the annual budget message to Congress in mid-January. The annual budget performance has become a charade of understatement. Spending and treasury revenue generally exceed budget estimates. Without exception deficits are larger than budget forecasts.

# SCRAPING THE BOTTOM



# Bruce Bissat - Ray Cromley Political Notebook

WASHINGTON (NEA) - A quick telephone check of a few key Republican leaders around the country indicates that, in the growing aftermath of GOP victories, it is still Michigan's Gov. George Romney and Richard Nixon for the 1968 presidential nomination. The leaders warmly welcome the addition of Charles Percy of Illinois, U. S. Senate winner, and Ronald Reagan, governor-elect in California, to the sweepstakes roster, but the feeling is they will serve mostly to add stardust to the race and give it a surface look of flexibility and openness.

# Barbs

By WALTER C. PARKES  
Behind many a successful man is a woman who wouldn't have married him if he hadn't been highly successful. But they may meanwhile be strutting their child's mind - and also his soul!

# Crane's Worry

TONY's mother should give him an educational "tool kit" for use in his own home. That's how she can make sure he goes to college instead of being a school dropout. So heed Benjamin Franklin and send for the booklet below. It can often change a "dumb" into a top-notch student!

# Letters

Editor: Herald  
On behalf of the Sanford-Seminole Jaycees I would like to extend a cordial "Thank You" for the part you played in the recently held Jaycee Kidie Day Carnival.

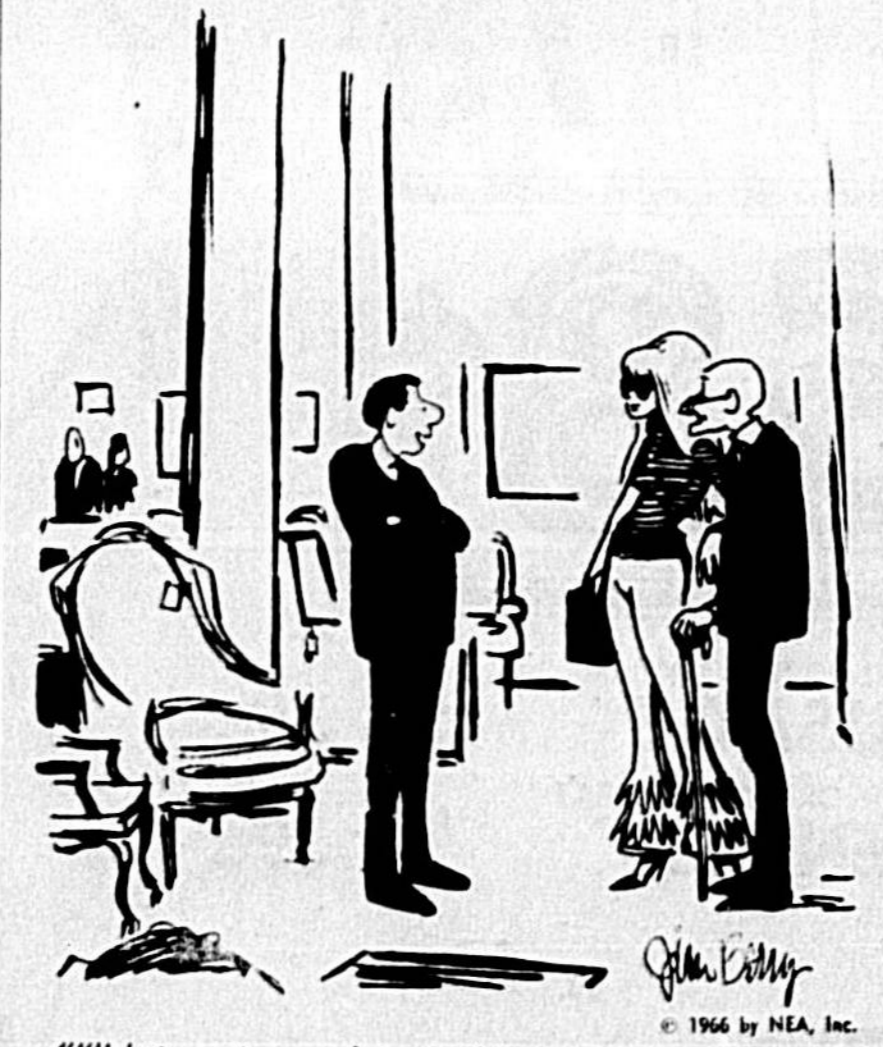
### OVER 35 YEARS

(Alongside old post office)

## Sanford Furniture Co.

Carpets • Furniture  
Tile • Pianos  
Rental Beds

# BERRY'S WORLD



## Learn to FLY!

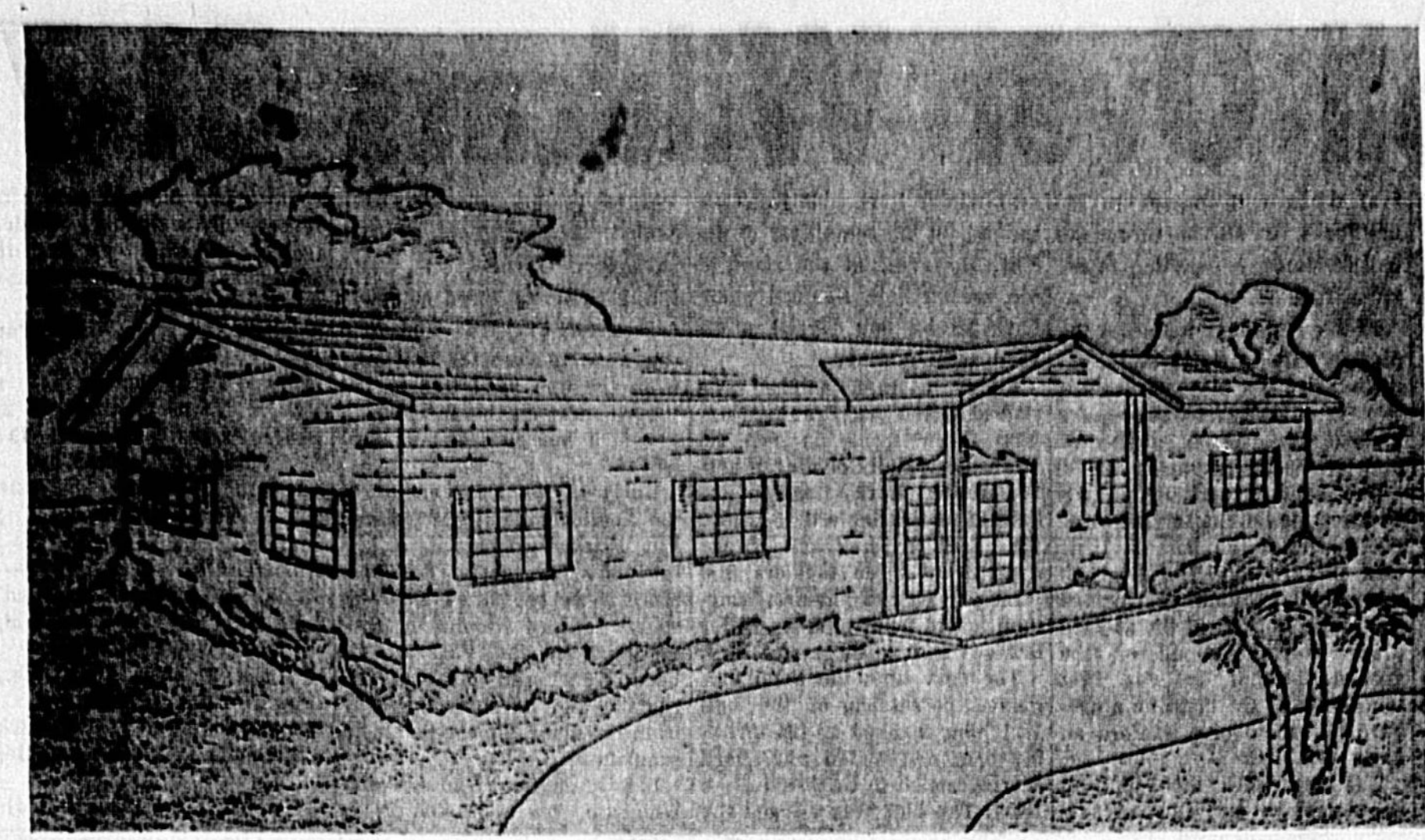
REAL ACHIEVEMENT  
"ALWAYS ABOVE THE CROWD"

SPECIAL SOLO COURSE... \$99.00

NEW AIR TAXI CERTIFICATE COVERS ENTIRE U.S. - 4001 GENERAL FLORIDA POWERS OF ATTORNEY BE REACHED IN ONE HOUR OR LESS.

ESSEX AVIATION PRODUCTS

Call 365-3201



ARTIST'S CONCEPTION of the new civic center to be built on the 20 acre lakefront recreation park recently acquired by the City of Casselberry is shown above. The 30 by 68 foot building will be built so that it can be expanded in the future. The Recreation Commission hopes to receive donations of labor and materials to make construction possible. (Herald Photo)

# Johnson--A Hard Man To Slow Down--Says Family Physician

AUSTIN, Tex. (AP) - President Johnson doesn't always mind his doctor. But the doctor seemed to know he wouldn't.



FINISHED CHRISTMAS wreath is shown by Mrs. Nancy Oakley as Mrs. Judy Brugman and Martin Neiswander of the Casselberry Methodist Church struggle with putting wreaths together from computer cards. The class members all pitched in at a meeting Friday night to produce the attractive holiday decorations for their fund raising project. (Herald Photo)

# Tuesday--A Day To Remember

NEW YORK (AP) - Tuesday is the third anniversary of the assassination of President J.F. Kennedy in Dallas, Tex., and the controversy surrounding his death continues.

## Operetta Set At St. Luke's

A three-act operetta entitled "Around the Seasons" will be presented 7 p.m. Tuesday at St. Luke's Christian Day School by the pupils of the lower elementary grades.

## Wilson PTO Has Program On Health

Services offered the public through the County Health Department were outlined by Mrs. Hilda Kibbe for members of the Wilson (Paola) Parent-Teacher Organization at their November meeting.

# Demos Solid In U.S. Senate

WASHINGTON (AP) - Barren of an unexpected landslide defeat in their 1968 presidential campaign, Democrats appear solidly entrenched for control of the Senate for another four years.

# Romney, Rocky Plan Meet On GOP Strategy

WASHINGTON (AP) - Michigan Gov. George Romney, bolstered by a poll in which he outran President Johnson, is expected to meet with New York Gov. Nelson A. Rockefeller today in Puerto Rico to discuss strengthening the Republican party.

# ASK GAC

for a cash advance

Shopping with ready cash can help you complete your holiday preparations early... and getting the money you need to do it is a simple matter at your GAC office. You'll get prompt, personal service and convenient monthly payments fitted to your budget. Stop in or call. Get a cash advance from GAC for gift-buying, new clothing, home furnishings, holiday travel... or for any good reason.

ASHBORO, N.C. 27802

111 West First Street Sanford, Phone 322-4748

428 North Orange Avenue... Phone 424-3605  
402 West Central Boulevard... Phone 422-5423  
1243 East Colonial Drive... Phone 422-5645

## Herald Area Correspondents

Altamonte Springs Mrs. Jella Bortos 858-1318	Geneva Mrs. Joe E. Mathieux 349-2505
Dear Lake-Forest City Mrs. Maryann Miles 858-8078	Lake Mary Mrs. Frances Wester 322-4219
Casselberry Mrs. Jane Casselberry 888-5046	Lake Monroe Mrs. H. L. Johnson 322-4722
Chuloto Mrs. Lisa Baker 265-5124	Longwood Mrs. Donna Estes 888-3917
DeBary Mrs. John Leone 668-4853	North Orlando Mrs. Marilyn Peterson 322-6901
Deltona Mrs. Mildred Haney 668-5361	Osteen Mrs. Clarence Snyder 422-4841
Enterprise Mrs. Rickie Harris 668-5384 668-4640	Orlando Miss Ruth Davidson 365-3651

## The Sanford Herald

Page 8 Sanford Herald Nov. 21, 1966

WALTER A. GRIEGL, EDITOR AND PUBLISHER  
FRANK VOLKLAND, Circulation - General Manager  
LARRY VERNER, Advertising Director

## LEE BROTHERS

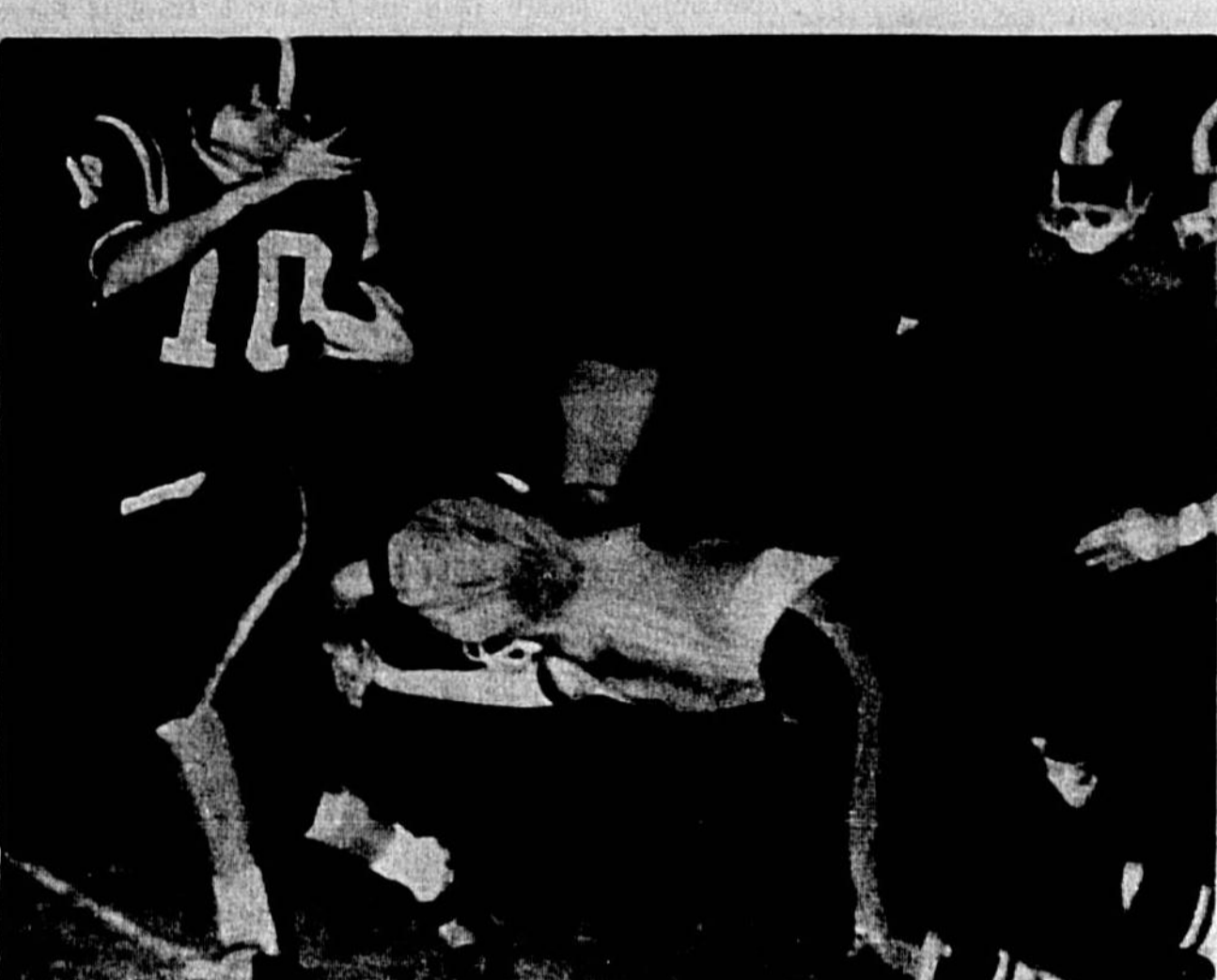
Plumbing, Heating & Air Conditioning  
Lawn Sprinklers, Pumps and Piping  
QUALITY INSTALLATIONS Since 1917

317 - 319 ELM AVE. SANFORD, FLA.  
TEL. 322-0852

## Esso Flying Seminole Ranch

365-3201

# Sanford Seminoles Roll Over Wildcats 31-7



AND AWAY WE GO... End Mike Long sets his sight on the goal line to add another six-pointer to the Seminole total. (Herald Photo)

The Sanford Seminoles, swept along by the running of the backfield and quarterback Frank Whigham, dominated the scoring as they skinned the Winter Park Wildcats 31-7 at the Cats home den Friday night.

Sanford's offense was led by the running of the backfield and quarterback Frank Whigham, who had 125 yards and two touchdowns. He was joined by Fred Weber and Bill Frisby, who each had 75 yards and a touchdown.

The Wildcats' defense was led by their quarterback, who completed 12 of 20 passes for 150 yards and a touchdown. He was joined by Fred Weber and Bill Frisby, who each had 75 yards and a touchdown.

# Powerful Lakeview Grabs OBC Crown Determined Lyman Drops Tough One

Lakeview captured the Orange Bowl Conference crown in a hard fought gridiron battle in Longwood.

Lyman's season tally dropped to 4-5 with Friday night's setback. The records will try to even their record with their final game against Bishop Moore's Devils.

Lyman's season tally dropped to 4-5 with Friday night's setback. The records will try to even their record with their final game against Bishop Moore's Devils.

# We Did A Fine Job—Metts

"They did a whole of a job on offense. I mean Stan Hemphill and Bernie Hendrick and those ends, Greg Ganas and Mike Long, well sir, they played the best offensive ball I've seen from them all season," said Head Coach Buck Metts of the Fighting Seminoles.

# It's Gators, Tech In Orange Bowl

MIAMI, Fla. (AP) — It will be Florida and Georgia Tech in the Orange Bowl football game here Jan. 2.

# College Scores

Wm. & Mary 35, Richmond 19; Case 10, Furman 6; N. Michigan 7, Quantico 7; Dartmouth 40, Penna. 21; Princeton 7, Cornell 0; Columbia 40, Brown 38; Colgate 26, Rutgers 7; Penn State 48, Pitt 24; Boston Col. 14, Mass. 7; Holy Cross 16, Conn. 0; Buffalo 25, Youngstown 16; Bowling Green 62, Temple 20; Clarion 28, West Chester 26.

# Jones—He Can Block Too

EAST LANSING, Mich. (AP) — Michigan State halfback Clint Jones, who set a Big Ten record by running 238 yards against Iowa, thought he played a better game against Notre Dame, although he gained only 13 yards. Jones carried the ball just 10 times. The rest of the time he was blocking, helping Jimmy Raye run 75 yards and throwing a key block in Regis Cavenader's four-yard touchdown run.

# Parents Night

The final game of the 1966 football season, pitting the Fighting Seminoles against the Deland Bulldogs this Wednesday at 8 p.m. at Municipal Stadium will have an added flavor of "Parent's Night" starting at 7:45 p.m.

# Palmer Shows 'Em How

HOUSTON (AP) — When the people root for a millionaire over an average guy, they will decide which is the top team in the country. The Irish and Spartans, ranked 12 last week, fought to a 10-10 tie in their clash at East Lansing, Mich., Saturday.

# NFL Roundup: The Rise And Fall Of A Quarterback

By THE ASSOCIATED PRESS  
Last month, Johnny Unitas was just another quarterback to Gary Yepremian, the Cyprion Lion.

Unitas then fired four touchdowns, leading the Colts to a 45-14 romp over Detroit. It was a different story Sunday, the Lion defenders blanketing Baltimore until sub-quarterback Gary Coozar replaced Unitas to cover Sunday on the way to a 20-14 National Football League victory over the Colts.

Pal Studstill grabbed a 9-yard scoring pass from Karl Sweetland and Bobby Feltz plunged a yard for another Detroit touchdown. The loss, coupled with Green Bay's 13-0 victory over Chicago, dropped the Colts one game behind the Packers in the league's Western Division title race.

Pat Studstill grabbed a 9-yard scoring pass from Karl Sweetland and Bobby Feltz plunged a yard for another Detroit touchdown. The loss, coupled with Green Bay's 13-0 victory over Chicago, dropped the Colts one game behind the Packers in the league's Western Division title race.

# Pass Catchers - - A Mighty Big Day

By THE ASSOCIATED PRESS  
Art Graham, Otis Taylor and George Sauer displayed sizzling pass catching ability, but when it comes to plucking passes out of the air, you can't overlook Tom Janik.

# Pro Grid Standings

National League	
Eastern Conference	
W	L T Pct. Pts. OP
St. Louis	7 2 1 .778 340 187
Cleveland	7 2 1 .778 291 177
Philadelphia	6 5 0 .545 238 208
Washington	5 6 0 .455 217 246
Pittsburgh	3 6 1 .333 186 253
New York	1 8 1 .111 147 316
Atlanta	1 9 0 .100 129 334
Western Conference	
W	L T Pct. Pts. OP
San Francisco	8 2 0 .800 246 107
Baltimore	7 3 0 .700 246 115
Los Angeles	6 5 0 .545 238 176
San Diego	4 4 2 .500 217 247
Minnesota	3 5 1 .375 207 270
Chicago	3 5 2 .375 194 276
Detroit	1 6 1 .143 117 325
Sunday's Results	
Atlanta 27, New York 16	
Detroit 20, Baltimore 14	
Green Bay 13, Chicago 6	
Dallas 24, Pittsburgh 7	
Philadelphia 21, Minnesota 6	
Philadelphia 35, San Francisco 24	
Cleveland 14, Washington 3	
American League	
Eastern Division	
W	L T Pct. Pts. OP
Buffalo	7 3 1 .700 235 210
Boston	5 3 2 .625 215 211
New York	5 4 1 .556 205 182
Houston	3 8 0 .273 271 301
Miami	2 9 0 .200 145 378
Western Division	
W	L T Pct. Pts. OP
Kan. City	8 2 1 .800 370 217
Oakland	7 4 0 .667 249 219
San Diego	4 4 2 .500 217 188
Denver	2 8 0 .200 128 231
Sunday's Results	
New York 30, Miami 13	
Buffalo 27, Houston 10	
Boston 27, Kansas City 27	
Buffalo 17, Denver 3	
Sunday's Games	
Atlanta at Chicago	
Green Bay at Minnesota	
Los Angeles at Baltimore	
New York at Washington	
Pittsburgh at St. Louis	

# Grid Powers Tense The Balloting Begins

By THE ASSOCIATED PRESS  
With the college football season all over, the balloting season begins in earnest and a handful of victorious clubs are newly aware of their postseason fate.

# Parents Night

The final game of the 1966 football season, pitting the Fighting Seminoles against the Deland Bulldogs this Wednesday at 8 p.m. at Municipal Stadium will have an added flavor of "Parent's Night" starting at 7:45 p.m.

# Palmer Shows 'Em How

HOUSTON (AP) — When the people root for a millionaire over an average guy, they will decide which is the top team in the country. The Irish and Spartans, ranked 12 last week, fought to a 10-10 tie in their clash at East Lansing, Mich., Saturday.

# Grid Powers Tense

By THE ASSOCIATED PRESS  
With the college football season all over, the balloting season begins in earnest and a handful of victorious clubs are newly aware of their postseason fate.

# Crimson Tide Sets Sights On 'Big' Prize

By THE ASSOCIATED PRESS  
Georgia, Florida, Mississippi and Tennessee go after state titles against traditional rivals this week, but ambitious Alabama has its sights set on a bigger prize.

Florida, which has already been crowned national champion, is currently ranked ninth nationally and the Yellow Jackets the No. 5 team.

Both clubs could move up in this week's rankings, and the winner probably will claim one of the top ratings.

Florida, which has already been crowned national champion, is currently ranked ninth nationally and the Yellow Jackets the No. 5 team.

**SPECIALS EVERY DAY**  
ON 100 BRANDS  
FARRELL'S  
ARCADE PACKAGE STORE  
OPEN DAILY - 9 A.M. - 6:15 P.M.  
310 E. FIRST - SANFORD

**We Did A Fine Job—Metts**  
"They did a whole of a job on offense. I mean Stan Hemphill and Bernie Hendrick and those ends, Greg Ganas and Mike Long, well sir, they played the best offensive ball I've seen from them all season," said Head Coach Buck Metts of the Fighting Seminoles.

**It's Gators, Tech In Orange Bowl**  
MIAMI, Fla. (AP) — It will be Florida and Georgia Tech in the Orange Bowl football game here Jan. 2.

**College Scores**  
Wm. & Mary 35, Richmond 19; Case 10, Furman 6; N. Michigan 7, Quantico 7; Dartmouth 40, Penna. 21; Princeton 7, Cornell 0; Columbia 40, Brown 38; Colgate 26, Rutgers 7; Penn State 48, Pitt 24; Boston Col. 14, Mass. 7; Holy Cross 16, Conn. 0; Buffalo 25, Youngstown 16; Bowling Green 62, Temple 20; Clarion 28, West Chester 26.

**Parents Night**  
The final game of the 1966 football season, pitting the Fighting Seminoles against the Deland Bulldogs this Wednesday at 8 p.m. at Municipal Stadium will have an added flavor of "Parent's Night" starting at 7:45 p.m.

**Palmer Shows 'Em How**  
HOUSTON (AP) — When the people root for a millionaire over an average guy, they will decide which is the top team in the country. The Irish and Spartans, ranked 12 last week, fought to a 10-10 tie in their clash at East Lansing, Mich., Saturday.

**Grid Powers Tense**  
By THE ASSOCIATED PRESS  
With the college football season all over, the balloting season begins in earnest and a handful of victorious clubs are newly aware of their postseason fate.

**Your Air-Conditioning Contractor is a Man of many skills.**

**HE'S A MAN OF TASTE...**  
Adding the finest in air-conditioning for your needs... a reverse-cycle model for cool comfort in summer and energy warm in winter... efficiently!

**A THERAPIST...**  
 soothing you with perfectly balanced air conditioning at night and day, summer and winter, and controlling humidity for your health and comfort.

**AN ALLERGY SLEUTH...**  
 building a dust-light, clean, filtering out allergy-causing pollutants... saving you from discomfort.

**AND A SAFETY SPECIALIST...**  
 making sure that your cooling and heating needs are met with flameless, safe electric air-conditioning.

**AND REDDY KILOWATT SAYS:**  
 "Thank Mr. Air-Conditioning Contractor for working with me to help identify to live better the year 'round... efficiently!"

W. Scott Burns, Mgr. 207 Magnolia Ave.

## Eastbrook Scouts At Citrus Course

By JANE CASSELLBERRY  
Patrol leaders from Girl Scout Cadette Troop 759, Eastbrook, attended the Citrus Council Patrol Leaders Training Course held at Camp Ticochee near Barberville. They were Jan Fritz, Tena Globus, Linda McGinnis and Kathy Engle.

The troop has been busy since its organization this fall and is made up of girls living in the Eastbrook, Tanglewood, and Goldenrod areas.

Most of the girls bridged to Cadettes from Junior Troops 652, 472 and 81.

They meet at the home of their leader, Mrs. Gerald O. McGinnis. Other adults working with the troop include Mrs. George Watters, Mrs. Leonard Hartnett, Mrs. Wayne Morris, Mrs. Brad Lyon and Mrs. Charles Engle.

The troop recently participated in an Intertroop Encampment at Ticochee, where all phases of planning and carrying out activities was done by patrol.

It was quite an experience for the girls, since most of them are in the seventh grade at South Seminole Junior High School and had not previously had complete responsibility for a troop camping event.

The troop has just completed a Standard Red Cross First Aid Course in preparation for the Emergency Preparedness Challenge. Instructing the course was Charles Bryan, who is on the faculty of Colonial High School, Orlando.

Girls completing the ten hour course include Susan Crick, Debbie Davant, Kathy Engle, Jan Fritz, Nora Hartnett, Rosemary Hays, Corey Kries, Diane Lucas, Celia Lutz, Susan Lyon, Linda McGinnis, Pam Morris, Tracy Pfeiffer, Judy Sloniger, Cindy Strong, Debbie Toombs, and Rhonda Watters.

A cookout was held Oct. 29 and invited guests were entertained with songs, games, and skits.

## Newcomer In Casselberry Politics

By JANE CASSELLBERRY  
Charles M. Woodruff, newcomer to Casselberry politics, has filed for the office of councilman with the endorsement of Triplet Lakes Association, of which he is president.

He lives at 41 North Triplet Drive with his wife, Florence, having moved to Casselberry four and a half years ago. He is 47 years old and was born near Kansas City. Except for the time spent in the Army in the Philippines, he has lived in that area and was a successful businessman.

Since moving here he has been the distributor for the state for products manufactured by Omaha Steel Corporation.

He is a member of Christ Episcopal Church, Longwood, American Legion Post 256, Veterans of Foreign Wars Post 3108, and is a Shriner.

On the question of ad valorem taxes, Woodruff stated he "will oppose any exorbitant tax and although the time will come that no doubt other methods of raising revenue will have to be found, at present, instead of looking for ways to tax, we should look for ways to save by using a good sound business approach."

He is in favor of putting more emphasis on streets, drainage, lights and utilities, and spending less on enlarging the police department, to draw more people to the area.

Woodruff believes that every citizen with a legitimate complaint regardless of status should be heard.

## Blood Drawing Location Is Changed

By MRS. RITCHIE HARRIS  
Location for the blood drawing for the Orange City Chapter, American Red Cross, has been changed from the library to the location of the chapter in Orange City. Drawing is scheduled from 4 until 7 p.m., Wednesday, Dec. 7.

Disaster committees of each community which is a member of the Orange City Chapter are scheduled to meet at 7:30 p.m., Dec. 6, in the DeBarry Civic Center.

It is urged that as many persons as possible report to donate blood and that all members of the disaster committee be present for their meeting.

Contrary to popular belief, rivers do not take most rain-water hard to the oceans. It is the 1,420 cubic miles of rain, snow and sleet deposited each year on the United States, only about 300 are delivered to the oceans by rivers. Most of the rest returns to the air through the evaporation and transpiration from plants.

Step in and try at Keder Jewelers any Tuesday A.M. Telephone for a Home try.

COOPER HEARING AID CENTER 25 MEADOWS AVENUE ORLANDO, FLORIDA

## THANKSGIVING SPECIAL

Argus  
Instant Load "270" with Electronic Flash

A \$94 VALUE COMPLETE \$79.95

Camera Only \$59.95  
Flash Only \$24.95

Wibault's Camera Shop  
210 SOUTH PARK AVENUE

## Seminole County FAIR

OPENS MONDAY  
NOV. 21st At 5:00 P.M.

### Children's Days

TUESDAY and WEDNESDAY, NOV. 22 & 23  
FAIRGROUNDS OPEN AT 4:00 P.M.

FEATURING  
DEGGELLER AMUSEMENT SHOWS

"MEET ME AT THE FAIR — WE'LL ALL BE THERE"

# SHOP

The store that cares...about you!

## GRADE "A" QUICK FROZEN OVEN READY YOUNG TURKEYS

16-LB. & UP 10 TO 16-LB. AVERAGE UNDER 10-LBS.

37¢ LB. 39¢ LB. 45¢ LB.

## Grade "A" Frozen BAKING HENS

4 to 6 LB. 39¢

Grade "A" QUICK FROZEN DUCKS 49¢

CAPN JOHN SHRIMP COCKTAIL 3 4-OZ. JARS \$1.00

SAUSAGE 39¢

CAPN JOHN STANDARD OYSTERS 12-OZ. CAN 99¢

## "Super-Right" Smoked, Tender, Fully COOKED HAMS

HALF OR WHOLE 14 TO 18 LB. 59¢

(Center Slice Ham ..... lb. 99¢)

## A&P (Ocean Spray Cranberry Sauce 2 1-lb. cans 45c)

### Cranberry Sauce 2 1-LB. CANS 39¢

A&P Our Finest Quality

### PUMPKIN 2 1-LB. 13-OZ. CANS 45¢

All Vegetable Shortening

### Snowdritf 3 LB. CAN 69¢

SAVE 20¢!

## MAXWELL HOUSE Instant Coffee

8 O'CLOCK 1-LB. BAG 59¢ 3-LB. BAG \$1.69

8 O'CLOCK 10-OZ. SIZE \$1.39

## Jane Parker BROWN 'N SERVE DINNER

Rolls 2 PKGS OF 12 29¢

PLAY BILLFOLD BINGO AT A&P!  
WIN UP TO \$1,000.00

Here Are Just a Few Of The Winners \$100.00 — Mrs. Elizabeth Adams — Orlando, Fla.  
\$100.00 — Victoria Hays — Oxford, Fla.  
\$50.00 — Mrs. Albert Foster — Lake Alfred, Fla.  
\$50.00 — Mrs. R. E. Berrington — Ft. Meade, Fla.  
\$50.00 — Mrs. M. J. Berrington — Ft. Meade, Fla.  
\$50.00 — Versa Strong — Ormond Beach, Fla.  
\$50.00 — Mrs. A. M. Tomer — Winter Haven, Fla.  
\$50.00 — E. Booth — Eau Gallie, Fla.  
\$50.00 — C. W. Teal — East Ft. Pierce, Fla.  
\$50.00 — Mrs. W. J. Switzer — Dade City, Fla.  
\$50.00 — Mrs. E. E. Doolberry — Cocoa, Fla.  
\$50.00 — Nellie M. Watson — Ft. Meade, Fla.  
\$50.00 — P. S. Flaig — Winter Park, Fla.  
\$50.00 — Mrs. George Miller — St. Cloud, Fla.  
\$50.00 — Merrick MacDonnell — Groveland, Fla.  
\$50.00 — Mrs. Theresa Ciopelinski — Orlando, Fla.  
\$50.00 — Grace Hender — St. Cloud, Fla.  
\$50.00 — Ben Harb — Groveland, Fla.  
\$50.00 — W. L. Pitts — New Smyrna Beach, Fla.  
\$50.00 — Mrs. Florence Justice — Orlando, Fla.

## FRESH LARGE CRISP ICEBERG LETTUCE

Head 19¢

## LARGE CALIF. PASCAL CELERY

Stalk 25¢

## FRESH RED Cranberries

1-LB. BAG 29¢

## GA. RED SWEET Potatoes

1-LB. 10¢

## CRISP FANCY RED DELICIOUS Apples

1-LB. 19¢

## FRESH LARGE SNOW WHITE Mushrooms

1-LB. 79¢

PRICES IN THIS AD ARE GOOD THROUGH WEDNESDAY, NOVEMBER 23.

Be a merry Santa!

### GIVE PLAID STAMP GIFTS!

PINECREST SHOPPING CENTER HWY. 17-92 S. SANFORD (QUANTITY RIGHTS RESERVED)

## U.S. Backing Red China Study?



LATEST PHASE in the Casselberry Utilities' expansion program at the sewage treatment plant is under construction. A \$14,000 building permit has been issued by the city for a 200,000 gallon aeration settling tank that will provide for service to an additional 600 homes. Due to the size of the project, the crane is employed to pour concrete in the center of the large tank. (Herald Photo)

## Teen Woes Still Plague Los Angeles

HOLLYWOOD (AP) — From the police car shared the anti-fur warning: "Attention. Attention. It is now past 10 p.m. The curfew law is now in effect. Anyone remaining in the area under 18 years old will be arrested."

Teen-agers on crowded, moonlit Sunset Boulevard — some conventionally dressed, many with shaggy beards, hair or clothing — have heard the message often recently.

It may mean a new face for the Sunset Strip, once a place for good food, adult night clubbing, elegant jazz; now a place for youngsters to dance frenetically and clog weekend traffic to a standstill. Many, having autos, can visit the area from distant parts of the Los Angeles area.

In two weekends of protesting the 10 p.m. curfew, more than 200 have been arrested on charges ranging from curfew violation to battery against a police officer. Saturday 400 policemen quelled disturbances involving 1,000.

Reactions — and proposed action — have been varied. Some say the strip has become run-down, lawless; the city Board of Supervisors had repeal the ordinance allowing teen-age dancing in night clubs.

## Legal Notice

In the Court of the County of Seminole, Florida, in Probate, In re Estate of JEANNETTE G. MILLS, Deceased.

To All Creditors and Persons Having Claims or Demands Against said Estate: You and each of you are hereby notified and required to present your claims and demands which you or either of you may have against the estate of JEANNETTE G. MILLS, deceased, late of said County, to the Judge of Seminole County, Florida, at his office in the court house of said County, Sanford, Florida, within six calendar months from the date of the first publication of this notice. Two copies of each claim or demand shall be in writing, and shall state the place of residence and post office address of the claimant, and shall be verified by the claimant, and accompanied by fitting proof of one dollar and such claim of demand not so verified shall be void.

J. Jacqueline Mills Milligan, Attorney for said Estate, 112 Magnolia Street, Sanford, Florida 32771. Publish Nov. 21, 28 & Dec. 5, 12, 1966. D165-57

UNITED NATIONS, N.Y. (AP) — Some U.N. diplomats predict that the United States will support a resolution to study a year's committee survey of admission of Red China to the world organization.

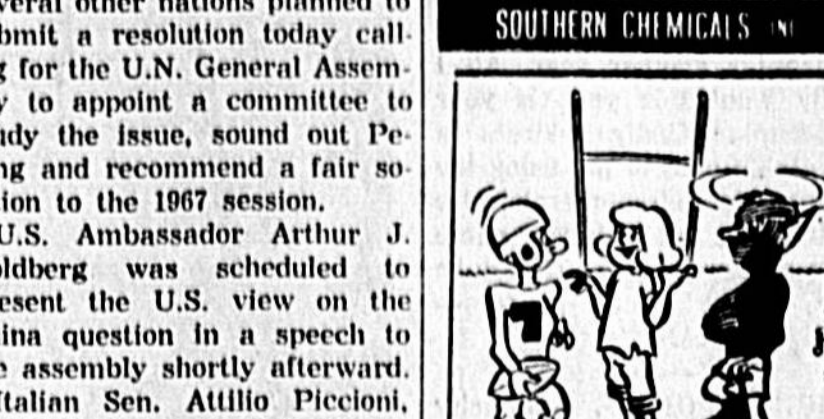
Italy, Belgium, Brazil and several other nations planned to submit a resolution today calling for the U.N. General Assembly to appoint a committee to study the issue, sound out Peking and recommend a fair solution to the 1967 session.

U.S. Ambassador Arthur J. Goldberg was scheduled to present the U.S. view on the China question in a speech to the assembly shortly afterward.

Italian Sen. Aulio Piccioni, outlining the proposal to the assembly Friday, said the committee should ask Peking if it really wants to be represented in the United Nations and if it will abide by the charter.

The committee also should determine what the position of Nationalist China would be if Peking were granted a seat, he said. The Nationalists, now confined to the island of Formosa, currently represent China in the Security Council and the General Assembly. The Nationalist government and the mainland Communist regime both have expressed strong opposition to a two-China policy giving representation to both.

Goldberg told the assembly Sept. 22 that the issue of seating Red China concerned whether Peking would abide by the charter and whether it would withdraw "unacceptable" demands for the expulsion of the Nationalists.



"Junior got in one whole play in the fourth quarter."

Your spirit can't be up to par when you know lurking behind these walls are incalculable numbers of insects eating away at your building. A quick call to Southern Chemicals will solve your problem. Call today!

SOUTHERN CHEMICALS INC.  
704 NORTH LEM AVENUE SANFORD

## LAUNDRY DRY CLEANING PICK-UP AND DELIVERY SERVICE

### SEMINOLE COUNTY LAUNDRY CO.

819 W. 3rd St. - M. L. BARON JR., OWNER - PH. 322-3253  
SERVING SANFORD and SEMINOLE COUNTY SINCE 1929

## Penneys AUTO CENTER

### This battery is built so well, we guarantee it for 4-full years and will replace it free for 18 months should it fail!

BATTERY GUARANTEE: If any Super Hi-Volt battery fails due to normal wear and tear within a 18-month period from the date of purchase it will be replaced free of charge. If any Super Hi-Volt battery fails due to normal wear and tear after 18 months from the date of purchase but prior to the expiration date of the guarantee period, Penneys Company will replace the battery, charging only the cost of shipping and handling charges on the new battery. This charge is based on the current retail price, less freight at the time of return, provided over the 18-month guarantee.

Now you can borrow \$1,000 to \$3,500 and take up to 4 years to repay!

Just in time for all your holiday expenses, too — gifts, travel, home improvements, new clothes, color TV — and buy all your bills, old and new.

Once you join the TELE-MONEY plan, you can borrow by phone — and will mail your check the very same day! To join, just make one visit to our office. Come in and join the TELE-MONEY plan today!

TELE-MONEY plan is an exclusive service of our company in this community.

**FAMILY CONSUMER FINANCE SERVICE**  
SANFORD  
110 South Magnolia Street ..... FA 24  
ORLANDO  
32 West Central Boulevard ..... GA 2-96  
705 North Mills Avenue ..... 425-66

## FOREMOST SUPER HI-VOLT

Type 24 Installed With Trade!

### 22.95

4-AMP CHARGER KEEPS YOUR BATTERY STRONG

### 13.99

Don't be caught with a weak or dead battery this winter!

DRIVE IN! CHARGE IT!

In Sanford Plaza AUTO CENTER OPEN 9 TO 9 MONDAY THRU SATURDAY

## It's for you!

Say hello to \$3,500 with the New TELE-MONEY plan!

Now you can borrow \$1,000 to \$3,500 and take up to 4 years to repay!

Just in time for all your holiday expenses, too — gifts, travel, home improvements, new clothes, color TV — and buy all your bills, old and new.

Once you join the TELE-MONEY plan, you can borrow by phone — and will mail your check the very same day! To join, just make one visit to our office. Come in and join the TELE-MONEY plan today!

TELE-MONEY plan is an exclusive service of our company in this community.

**FAMILY CONSUMER FINANCE SERVICE**  
SANFORD  
110 South Magnolia Street ..... FA 24  
ORLANDO  
32 West Central Boulevard ..... GA 2-96  
705 North Mills Avenue ..... 425-66

## ECKERD DRUGS

AMERICA'S FAMILY DRUG STORES

THERE IS AN ECKERD DRUG NEAR YOU ...

SANFORD PLAZA HWY. 17-92 & ONORA RD.  
SEMINOLE PLAZA HWY. 17-92 AND SR 456

PRICES GOOD THRU WEDNESDAY  
LIMIT RIGHTS RESERVED

## LUSTRE CREME

1/2 OZ. HAIR SPRAY 49¢

## BRECK SHAMPOO

8 OZ. REG. ONLY OR NORMAL 59¢

## Crest TOOTH PASTE

LARGE SIZE — 5c OFF LABEL  
LIST 59c 34¢

## BRYLCREEM

WING SIZE 4 1/2" OF 59¢

## EXCEDRIN

BOTTLE OF 100 78¢

## CHAP STICK

11/2" 22¢

## ALOPHEN PILLS

100'S 36¢

## Electric Blanket

Full double bed size automatic electric blanket with dual control for individual comfort — 100% nylon binding. As't luxury colors.

LIST 12.95 8.99

## TWEED RUGS

LATEST COLORS APPROX. 90% 12' x 12' RAYON PILE DECORATIVE COLORS AND TWEEDS TO ENHANCE THE BEAUTY OF ANY ROOM.

COMPARE AT 19.95 12.88

## BACK SCRATCHER

New Completely automatic bath brush. Operates on standard size flashlight batteries — Batteries included.

COMPARE AT 2.49 99¢

## RUG RUNNERS

6 FT. X 24" RAYON VISCOSE RUGS WITH BUILT-IN NON SKID RUBBER BACKING ASSORTED SOLIDS & TWEEDS.

COMPARE AT 3.95 1.99

## JERRI - 13 oz. Mixed Nuts

REG. 79¢ 49¢

## Big E Special SHOE BOXES

COMPARE AT 69. EA 3 FOR 99¢

## ELECTRIC PERCOLATOR

HOLDS FIVE CUPS

COMPLETE WITH ELEC. CORD. GUARANTEED BLACK BASE AND HANDLE

COMPARE AT 3.88 1.99

## PERSONNA STAINLESS STEEL BLADES

7 1/2" INJECTOR LIST 99¢

Limit 1 with coupon thru Wed., Nov. 23

LIFE TIME CAST IRON, EASY TO CARRY HANDLE. GRILL IS 19" x 10 1/2"

COMPARE AT 12.95 8.88

## SCOTT NAPKINS

180 CT. FAMILY REG. 37c

Limit 1 with coupon thru Wed., Nov. 23

HEAVY DUTY CAST IRON 2 inch FISH FRY PAN 19" x 10 1/2"

LIST 3.95 2.99

## BATH TISSUE

LYDIA GRAY TO PALE REG. 88c

Limit 1 with coupon thru Wed., Nov. 23

BUTANE LIGHTER

ATTRACTIVE CHROME PLATED BUTANE LIGHTER. PRECISION MADE. WINDPROOF

LIST 6.95 2.66

## Eastbrook Scouts At Citrus Course

By JANE CASSELLBERRY  
Patrol leaders from Girl Scout Cadette Troop 755, Eastbrook, attended the Citrus Council Patrol Leader Training Course held at Camp Ticochee near Barberville. They were Jan Fritz, Tena Globus, Linda McGinnis and Kathy Engle.

The troop has been busy since its organization this fall and is made up of girls living in the Eastbrook, Tangierwood, and Goldenrod areas.

Most of the girls bridged to Cadettes from Junior Troops 635, 472 and 311.

They meet at the home of their leader, Mrs. Gerald O. McGinnis. Other adults working with the troop include Mrs. George Watters, Mrs. Leonard Hartnett, Mrs. Wayne Morris, Mrs. Brad Lyon and Mrs. Charles Engle.

The troop recently participated in an Intertroop Encampment at Ticochee, where all phases of planning and carrying

## Newcomer In Casselberry Politics

By JANE CASSELLBERRY  
Charles M. Woodruff, newcomer to Casselberry politics, has filed for the office of councilman with the endorsement of Triplet Lakes Association, of which he is president.

He lives at 41 North Triplet Drive with his wife, Florence, having moved to Casselberry four and a half years ago. He is 47 years old and was born near Kansas City. Except for the time spent in the Army Engineers during World War II, he lived in that area and was a successful businessman.

Since moving here he has been the distributor for the state for products manufactured by Omaha Steel Corporation.

He is a member of Christ Episcopal Church, Longwood, American Legion Post 256, Veterans of Foreign Wars Post 1066, and is a Shriner.

On the question of ad valorem taxes, Woodruff stated he "will oppose any prohibitive tax and although the time will come that no doubt other methods of raising revenue will have to be found, at present, instead of looking for ways to tax, we should look for ways to save by using a good sound business approach."

He is in favor of putting more emphasis on streets, drainage, lights and utilities, and spending less on enlarging the police department, to draw more people to the area.

Woodruff believes that every citizen, with a legitimate complaint regardless of status should be heard.

## Improvement Week Declared In Oviedo

The week of Nov. 28-Dec. 3 has been proclaimed Clean-up and Paint-up week in the town of Oviedo by Mayor M. L. Gary.

The proclamation declares that "the citizens of the town... take civic pride in the appearance of their town and recognize the contribution of each to this effort; and... value the active participation and cooperation in community projects by the citizens... in conjunction with a request from the Women's Club" the special week is declared.

The proclamation further urges "all citizens to participate whole-heartedly in this improvement program of the club, particularly in the business section."

## Blood Drawing Location Is Changed

By MRS. RITCHIE HARRIS  
Location for the blood drawing for the Orange City Chapter, American Red Cross, has been changed from the library to the Citrus County Public Health Building, 201 N. Orange Ave., in Orange City. Drawing is scheduled from 4 until 7 p.m., Wednesday, Dec. 7.

Disaster committees of each community which is a member of the Orange City Chapter are scheduled to meet at 7:30 p.m., Dec. 6, in the DeBary Civic Center.

It is urged that as many persons as possible report to donate blood and that all members of the disaster committees be present for their meeting.

Contrary to popular belief, rivers do not take most rainwater back to the oceans. Of the 1,430 cubic miles of rain, snow and sleet deposited each year on the United States, only about 300 are delivered to the oceans by rivers. Most of the rest returns to the air through evaporation and transpiration from plants.

It is suggested that every citizen, with a legitimate complaint regardless of status should be heard.

The week of Nov. 28-Dec. 3 has been proclaimed Clean-up and Paint-up week in the town of Oviedo by Mayor M. L. Gary.

The proclamation declares that "the citizens of the town... take civic pride in the appearance of their town and recognize the contribution of each to this effort; and... value the active participation and cooperation in community projects by the citizens... in conjunction with a request from the Women's Club" the special week is declared.

The proclamation further urges "all citizens to participate whole-heartedly in this improvement program of the club, particularly in the business section."

### 500 HOURS OF WORRY-FREE HEARING

Adjustment has just developed an all new "behind-the-ear" hearing aid, model H-350, with battery power that will last 500 HOURS.

TRY IT IN YOUR HOME FREE!

### THANKSGIVING SPECIAL

Argus Instant Load "270" with Electronic Flash \$79.95

Camera Only \$59.95  
Flash Only \$24.95

### THANKSGIVING SPECIAL

Argus Instant Load "270" with Electronic Flash \$79.95

Camera Only \$59.95  
Flash Only \$24.95

### THANKSGIVING SPECIAL

Argus Instant Load "270" with Electronic Flash \$79.95

Camera Only \$59.95  
Flash Only \$24.95

# SHOP A&P

The store that cares... about you!

## GRADE "A" QUICK FROZEN OVEN READY YOUNG TURKEYS

14-LB. & UP 10 TO 14-LB. AVERAGE UNDER 10-LBS.

37¢ LB. 39¢ LB. 45¢ LB.

## Grade "A" Frozen BAKING HENS

4 to 6 LB. 39¢ LB. AVG.

"Super-Right" Smoked, Tender, Fully COOKED HAM lb. 59¢ (Center Slice Ham... lb. 99¢)

## GRADE "A" QUICK FROZEN DUCKS

CAPN JOHN SHRIMP 3 4-OZ. JARS 1.00  
MORRILL SOFT HOCK 1-LB. 39¢  
SAUSAGE CAPN JOHN STANDARD 12-OZ. CAN 99¢

## THANKSGIVING DAY

A & P STORES WILL BE CLOSED

## A&P Cranberry Sauce 2 1-LB. CANS 39¢

A&P Our Finest Quality PUMPKIN 2 1-LB. 13-OZ. CANS 45¢

All Vegetable Shortening Snowdrift SAVE 20%! 3 LB. CAN 69¢

## THANKSGIVING SPECIAL

Argus Instant Load "270" with Electronic Flash \$79.95

## THANKSGIVING SPECIAL

Argus Instant Load "270" with Electronic Flash \$79.95

## THANKSGIVING SPECIAL

Argus Instant Load "270" with Electronic Flash \$79.95

## THANKSGIVING SPECIAL

Argus Instant Load "270" with Electronic Flash \$79.95

## U.S. Backing Red China Study?



LATEST PHASE in the Casselberry Utilities' expansion program at the sewage treatment plant is under construction. A \$14,000 building permit has been issued by the city for a 200,000 gallon aeration settling tank that will provide for service to an additional 600 homes. Due to the size of the project, the crane is employed to pour concrete in the center of the large tank. (Herald Photo)

UNITED NATIONS, N.Y. (AP) — Some U.N. diplomats predict that the United States will support a resolution to authorize a year's committee study of admission of Red China to the world organization.

Italy, Belgium, Brazil and several other nations planned to submit a resolution today calling for the U.N. General Assembly to appoint a committee to study the issue, sound out Peking and recommend a fair solution to the 1957 session.

U.S. Ambassador Arthur J. Goldberg was scheduled to present the U.S. view on the China question in a speech to the assembly shortly afterward. Italian Sen. Attilio Piccioni, outlining the proposal to the assembly Friday, said the committee should ask Peking if it really wants to be represented in the United Nations and if it will abide by the charter.

The committee also should determine what the position of Nationalist China would be if Peking were granted a seat, he said. The Nationalist government and the mainland Communist regime both have expressed strong opposition to a two China policy giving representation to both.

Goldberg told the assembly Sept. 22 that the issue of seating Red China concerned whether Peking would abide by the charter and whether it would withdraw "unacceptable" demands for the expulsion of the Nationalists.

## Teen Woes Still Plague Los Angeles

HOLLYWOOD (AP) — From the police car blared the siren... Attention. Attention. It is now past 10 p.m. The curfew law is not in effect. Anyone remaining in the area under 18 years old will be arrested.

Teenagers on crowded, moonlit Sunset Boulevard — some conventionally dressed, many with shaggy beards, hair or clothing — have heard the message often recently.

It may mean a new face for the Sunset Strip, once a place for good food, adult night clubbing, elegant jazz; now a place for youngsters to dance frenetically and clog weekend traffic to a standstill. Many, having autos, can visit the area from distant parts of the Los Angeles area.

In two weekends of protesting the 10 p.m. curfew, more than 200 have been arrested on charges ranging from curfew violation to battery against a police officer. Saturday 400 policemen quelled disturbances involving 1,000.

Reactions — and proposed action — have been varied. Some say the strip has become run-down, lawless; the County Board of Supervisors should repeal the ordinance allowing teen-age dancing in night clubs.

Others — adults as well as teenagers — say it is the curfew ordinance that should go. Disturbances began when policemen increased enforcement of the curfew ordinance on the strip. This brought tourists, rock and edge throwing, some property damage, and a plethora of protesting signs and pamphlets arguing against the ordinance as the "shackling of 15-year-olds."

## Legal Notice

In the Court of the County of Duval, Florida, Plaintiff, JEANNETTE G. MILLS, Defendant, JACQUES MILLS SAUER, Plaintiff, LUTHER J. MILLS, II, Plaintiff, and JEANNETTE G. MILLS, Defendant, versus LUTHER J. MILLS, II, Plaintiff, and JEANNETTE G. MILLS, Defendant.

## It's for you!

Say hello to \$3,500 with the New TELE-MONEY plan!

Now you can borrow \$1,000 to \$3,500 and take up to 4 years to repay!

Just in time for all your holiday expenses, too — gifts, travel, home improvements, new clothes, color TV — and to pay all your bills, old and new!

Once you join the TELE-MONEY plan, you can borrow by phone — and you'll mail your check the very same day. To join, just make one visit to our office. Come in and join the TELE-MONEY plan today!

TELE-MONEY plan is an exclusive service of our company in this community.

## FAMILY CONSUMER FINANCE SERVICE

SANFORD 110 South Magnolia Street... FA 2-461

ORLANDO 32 West Central Boulevard... GA 2-9895

705 North Mills Avenue... 425-6611

## ECKERD DRUGS

AMERICA'S FAMILY DRUG STORES

PRICES GOOD THRU WEDNESDAY

## LUSTRE CREME. 49¢

## BRECK SHAMPOO 59¢

## CREST TOOTH PASTE. 34¢

## BRYLCREEM 59¢

## EXCEDRIN 78¢

## CHAP STICK 22¢

## ALOPHEN PILLS 36¢

## Electric Blanket 8.99

Full double bed size automatic electric blanket with dual control for individual comfort — 100% nylon binding. Asst. luxury colors. LIST 12.95

## TWEED RUGS 12.88

LATEST COLORS — APPROX. 9'x12' DEEP. PLUS RAYON PILE DECORATION COLORS AND TWEETS TO INCREASE THE BEAUTY OF ANY ROOM.

## BACK SCRATCHER 99¢

New Completely automatic battery powered back scratcher. Operates on standard size flashlight batteries — Batteries included. COMPARE AT 2.49

## RUG RUNNERS 1.99

6 FT. X 24" RAYON VISCOSE RUGS WITH BUILT-IN NON SKID RUBBER BACKING ASSORTED SOLIDS & TWEETS. COMPARE AT 3.95

## MIXED NUTS. 49¢

JERRI — 13 oz. REG. 79¢ COMPARE AT 1.00

## FOREMOST SUPER HI-VOLT BATTERY 22.95

Type 24 Installed With Trade!

## 4-AMP CHARGER 13.99

4-AMP CHARGER KEEPS YOUR BATTERY STRONG

Don't be caught with a weak or dead battery this winter!

## PERSONNA 58¢

7 1/2" INJECTOR LIST 98¢

## SCOTT NAPKINS 23¢

180 CT. FAMILY REG. 37¢

## BATH TISSUE 65¢

LYDIA GREY 10 PAK REG. 88¢

## SPORTSMAN CAST IRON PORTABLE GRILL 2.99

LIFE TIME CAST IRON. EASY TO CARRY HANDLE. GRILL IS 19"x10 1/2". COMPARE AT 12.95

## HEAVY DUTY CAST IRON 2 INCH FISH FRY PAN 2.99

19"x10 1/2"x2". LIST 3.95

## BUTANE LIGHTER 2.66

ATTRACTIVE CHROME PLATED BUTANE LIGHTER. PRECISION MADE. WIND-PROOF. LIST 6.95

## Seminole County FAIR

OPENS MONDAY NOV. 21st At 5:00 P.M.

## Children's Days

TUESDAY AND WEDNESDAY, NOV. 22 & 23

FAIRGROUNDS OPEN AT 4:00 P.M.

FEATURING DEGGELLER AMUSEMENT SHOWS

"MEET ME AT THE FAIR — WE'LL ALL BE THERE"



## "Candid Chatter"

year assignment with the Air Force.

Speaking of Delta Airlines — If any of you ever have the opportunity to see "Let Yourself Go," sponsored by Delta, DON'T MISS IT!

A group of us in press, radio and TV media in central Florida were guests at the show and cocktail party recently at the Strup Cup in Orlando. The actors were two young men and women who spoofed just about everything and everybody. It is a highly stimulating and refreshing show.

OVERHEARD after the show at the lunch buffet at McCoy's Skyline—A fashionable titan-haired DeBary commented, "Gee, I wish I were a girl so I could take it off."

Read with genuine interest where LYNDIA BIRD JOHNSON was on McCall's payroll for the time of \$10,000 annually. She completed a story at the end of three weeks which will be published in the January publication.

"Oh, er, Mr. G—now let's see. Okay, boss, I understand completely. It's really that I didn't choose the right parents, and not my capability."

The Cooking Club Thursday night was highly successful with Chef SOL WEILL, one of the best chefs in the world, through many delightful recipes in his own inimitable style.

"Holiday in Fashions" at the Sanford Woman's Club Saturday night brought a household of patrons as did "Christmas in No-

members" at the Sanford Garden Center Friday and Saturday.

Friends of CAPT. AND MRS. JOSEPH M. TULLY JR. will be highly interested in news from Ruth's and Joe's daughter, HEATHER ANNE.

MISS TULLY is included among 25 young ladies who are on the 1966 Greenleaves Ball Debutante Committee. The ball will be held in the Grand Ballroom of the Hotel Baltimore, New York City, on Dec. 22.

The Tullys currently reside in Mayport.

Many thanks to the readers for the "favors" last week. "Touche" to you gals—you are on the right track as to "how to win editors and influence the press."

Read with genuine interest where LYNDIA BIRD JOHNSON was on McCall's payroll for the time of \$10,000 annually. She completed a story at the end of three weeks which will be published in the January publication.

"Oh, er, Mr. G—now let's see. Okay, boss, I understand completely. It's really that I didn't choose the right parents, and not my capability."

The Cooking Club Thursday night was highly successful with Chef SOL WEILL, one of the best chefs in the world, through many delightful recipes in his own inimitable style.

"Holiday in Fashions" at the Sanford Woman's Club Saturday night brought a household of patrons as did "Christmas in No-

ings and hidden mechanism of the accurate machine?

TO CECILE HEARD—Please inform me at once as to the North Pole zip code. My letter to Santa this year will read thus:

"DEAR SANTE-O, you lovable ole Romeo! The left-over milk, diamonds and suds will suffice for another year. All I really want this year is your autograph. Kindly address a negotiable note to me using the Sanford zip code numerals, also written out, and with your name written, not printed. That'll be neat, sweet — 32 grand — MAN OH MAN!"

JUNE PORZIG, publicity chairman for the "Roundtable" next play scheduled for early December, has announced that rehearsal is moving swiftly and it is possible the show will go on the road sooner than was previously announced.

JIM BLYTHE AND SANDRA CONWAY will play the leading roles in "The Man in the Dog Suit" with supporting roles played by VAL COLBERT, BILL SHARP, JOEL CONWAY, CLAUDIA BLYTHE, BUNNY LOGAN, JERRY McCABE, DENNIS CARR AND JIM TALMADGE.

"Oh, er, Mr. G—now let's see. Okay, boss, I understand completely. It's really that I didn't choose the right parents, and not my capability."

The Cooking Club Thursday night was highly successful with Chef SOL WEILL, one of the best chefs in the world, through many delightful recipes in his own inimitable style.

"Holiday in Fashions" at the Sanford Woman's Club Saturday night brought a household of patrons as did "Christmas in No-

ings and hidden mechanism of the accurate machine?

GUEST SPEAKERS at the last meeting of the Seminole County Legal Secretary's Association were Attorney GORDON FREDERICK and Police Chief ALBERT WILLIAMS, who gave a demonstration of the DRUNKOMETER machine.

SO where could be a better spot to test out the innerwork-



ELEANOR BUTLER, left, and Betty Ball, both members of Zeta Xi Chapter of Beta Sigma Phi, pose with beautiful service which will be awarded to a lucky person as a fund raising project to aid the Little Red School House. Silver will be on display at the County Fair all this week.

MEMO TO MR. W. FROM PERSNICKEYTYPAL — Sir, I appreciate the education from you re facets of this racket we're in. One thing you failed to enlighten me in is "pay-

Attention SANTA Claus! "HAIR FALLS" are the teenage rage! PLACE YOUR ORDER NOW COME IN NOW \$3.00 OVERNIGHT DELIVERY AND SELECT YOUR COLOR.

Betty Anne's HAIR STYLING SALON 2201 S. PARK AVE. PH. 322-4913

BIG NEWS is that the second annual CHAMPAGNE BALL under the auspices of Seminole County Mutual Concert Association will be at the Civic Center . . . and with champagne, if you please . . . on Dec. 10.

The committee is operating full steam ahead to make this Ball the biggest ever. Keep your eyes glued to The Herald.

A 1/2 and Mrs. H. E. Long Jr., of Cape Cod, Mass., announces the birth of their first child, a son, at Ochs Air Force Base on Nov. 19. The husky young man weighed in at eight pounds, 13 ounces and has been named Harold Ernest Long III. Maternal grandparents are Mr. and Mrs. Frank H. Linn of Los Alamitos, Calif., and paternal grandparents are Mr. and Mrs. H. E. Long of Sanford.

Stewart, Mrs. Gordon Bradley, Mrs. Dick Elam, Mrs. James Elser, Mrs. Charles Meeks, Mrs. Alfred Stanley, Mrs. Lamar Echols, Mrs. Tony Gonzalez and Mrs. W. R. Jennings.

Also Mrs. Lauren Johnson, Mrs. John Ludwig, Mrs. Edward Smith, Mrs. W. H. Meriwether, Mrs. Ted Williams, Mrs. George Hughes and the Misses Myra Meeks, Linda Jarman, Martha Johnson, Marianne Ludwig, Sheralynn Williams and Linda Harris.

The hostesses presented Miss Williams with an appropriate corsage made of cookie cutters and ribbon.

Others enjoying the evening with the honoree were her mother, Mrs. R. W. Williams, the groom-elect's mother, Mrs. R. E. Morris, Mrs. W. H.

Refreshments of petit fours with white icing, decorated with pink and green rose buds, mints, nuts, neapolitan ice cream, fruit punch and coffee were served to the guests.

Following the gift opening guests were grouped in couples, given tissue paper and pins and asked to make bridal veils. Mrs. John Horner and Mrs. James Dunn won the prize for doing the best job.

The hostesses presented Miss Williams with an appropriate corsage made of cookie cutters and ribbon.

Others enjoying the evening with the honoree were her mother, Mrs. R. W. Williams, the groom-elect's mother, Mrs. R. E. Morris, Mrs. W. H.

Others enjoying the evening with the honoree were her mother, Mrs. R. W. Williams, the groom-elect's mother, Mrs. R. E. Morris, Mrs. W. H.

## What's New

New for decorating is an aluminum covering with adhesive on the back. The pressure-sensitive decorative material is printed in luxurious and elegant patterns. The manufacturer says the material is ideal for decorating any smooth, clean surface, from walls to wastebaskets. The material, non-abrasive, cleanable, waterproof, fadeproof, is 18-inches wide and comes in 12- and 24-yard rolls. It is called Cling-foil.

A new multipurpose dryer, the manufacturer reports, is lightweight and suitable to take along when you travel. It is designed to dry hair, fingernails and lingerie.

An ideal gift for the young collector of miniature sports-cars: a bedspread with a sportscar design. In three-dimensional printing, the pattern includes designs for bucket seats, a vented hood and spoked wheels.

For your shopping convenience and added service we have relocated our enlarged Gift Linen Department on the mezzanine.

How is it that some editors rate a trip to beautiful San Marco Islands while the rest of us are trapped in outer Siberia? You and Mrs. V. have fun!

How is it that some editors rate a trip to beautiful San Marco Islands while the rest of us are trapped in outer Siberia? You and Mrs. V. have fun!

How is it that some editors rate a trip to beautiful San Marco Islands while the rest of us are trapped in outer Siberia? You and Mrs. V. have fun!

How is it that some editors rate a trip to beautiful San Marco Islands while the rest of us are trapped in outer Siberia? You and Mrs. V. have fun!

How is it that some editors rate a trip to beautiful San Marco Islands while the rest of us are trapped in outer Siberia? You and Mrs. V. have fun!

How is it that some editors rate a trip to beautiful San Marco Islands while the rest of us are trapped in outer Siberia? You and Mrs. V. have fun!

How is it that some editors rate a trip to beautiful San Marco Islands while the rest of us are trapped in outer Siberia? You and Mrs. V. have fun!

How is it that some editors rate a trip to beautiful San Marco Islands while the rest of us are trapped in outer Siberia? You and Mrs. V. have fun!

How is it that some editors rate a trip to beautiful San Marco Islands while the rest of us are trapped in outer Siberia? You and Mrs. V. have fun!

How is it that some editors rate a trip to beautiful San Marco Islands while the rest of us are trapped in outer Siberia? You and Mrs. V. have fun!

How is it that some editors rate a trip to beautiful San Marco Islands while the rest of us are trapped in outer Siberia? You and Mrs. V. have fun!

How is it that some editors rate a trip to beautiful San Marco Islands while the rest of us are trapped in outer Siberia? You and Mrs. V. have fun!

How is it that some editors rate a trip to beautiful San Marco Islands while the rest of us are trapped in outer Siberia? You and Mrs. V. have fun!

How is it that some editors rate a trip to beautiful San Marco Islands while the rest of us are trapped in outer Siberia? You and Mrs. V. have fun!

How is it that some editors rate a trip to beautiful San Marco Islands while the rest of us are trapped in outer Siberia? You and Mrs. V. have fun!

How is it that some editors rate a trip to beautiful San Marco Islands while the rest of us are trapped in outer Siberia? You and Mrs. V. have fun!

How is it that some editors rate a trip to beautiful San Marco Islands while the rest of us are trapped in outer Siberia? You and Mrs. V. have fun!

How is it that some editors rate a trip to beautiful San Marco Islands while the rest of us are trapped in outer Siberia? You and Mrs. V. have fun!

How is it that some editors rate a trip to beautiful San Marco Islands while the rest of us are trapped in outer Siberia? You and Mrs. V. have fun!

How is it that some editors rate a trip to beautiful San Marco Islands while the rest of us are trapped in outer Siberia? You and Mrs. V. have fun!

How is it that some editors rate a trip to beautiful San Marco Islands while the rest of us are trapped in outer Siberia? You and Mrs. V. have fun!

How is it that some editors rate a trip to beautiful San Marco Islands while the rest of us are trapped in outer Siberia? You and Mrs. V. have fun!

How is it that some editors rate a trip to beautiful San Marco Islands while the rest of us are trapped in outer Siberia? You and Mrs. V. have fun!

How is it that some editors rate a trip to beautiful San Marco Islands while the rest of us are trapped in outer Siberia? You and Mrs. V. have fun!

## Miss Sharon Doyle Engaged

Mr. and Mrs. Bernard Doyle of Pisgah Drive, Forest City, are announcing the engagement and approaching marriage of their daughter, Sharon Kay, to Richard Edward Harbin, son of Mrs. Jane Harbin of Orlando.

"Sherrill" is a graduate of the Forest Lake Academy, where she was a member of the National Honor Society and the Usher Club. She attended Southern Missionary College and was a member of Sigma Phi. Miss Doyle also attended Columbia Union College in Washington, D. C., and is presently employed in the office of Dr. Paul Foster in Orlando.

Grandparents of Sherrill are Mrs. Sophie Harbin of California and Mr. J. L. Doyle of Indiana. She was born in South Bend, Ind.

Her fiancé was graduated from Boone High School, Orlando. He attended Stetson University in DeLand and is now a senior at Florida State University. He is the grandson of Frank L. LaMie of Jacksonville and is originally from West Palm Beach.

The couple will be married Dec. 18 at 7 p.m. at the Forest Lake Seventh-day Adventist Church in Forest City.

DELICIOUS — Nutmeg butter is delicious on a variety of vegetable, including snapbeans, carrot, onions, beets, acorn squash and sweet potatoes. Just blend 1 teaspoon of ground nutmeg and 1/2 teaspoon of ground cinnamon into soft butter.

DELICIOUS — Nutmeg butter is delicious on a variety of vegetable, including snapbeans, carrot, onions, beets, acorn squash and sweet potatoes. Just blend 1 teaspoon of ground nutmeg and 1/2 teaspoon of ground cinnamon into soft butter.

DELICIOUS — Nutmeg butter is delicious on a variety of vegetable, including snapbeans, carrot, onions, beets, acorn squash and sweet potatoes. Just blend 1 teaspoon of ground nutmeg and 1/2 teaspoon of ground cinnamon into soft butter.

DELICIOUS — Nutmeg butter is delicious on a variety of vegetable, including snapbeans, carrot, onions, beets, acorn squash and sweet potatoes. Just blend 1 teaspoon of ground nutmeg and 1/2 teaspoon of ground cinnamon into soft butter.

DELICIOUS — Nutmeg butter is delicious on a variety of vegetable, including snapbeans, carrot, onions, beets, acorn squash and sweet potatoes. Just blend 1 teaspoon of ground nutmeg and 1/2 teaspoon of ground cinnamon into soft butter.

DELICIOUS — Nutmeg butter is delicious on a variety of vegetable, including snapbeans, carrot, onions, beets, acorn squash and sweet potatoes. Just blend 1 teaspoon of ground nutmeg and 1/2 teaspoon of ground cinnamon into soft butter.

DELICIOUS — Nutmeg butter is delicious on a variety of vegetable, including snapbeans, carrot, onions, beets, acorn squash and sweet potatoes. Just blend 1 teaspoon of ground nutmeg and 1/2 teaspoon of ground cinnamon into soft butter.

DELICIOUS — Nutmeg butter is delicious on a variety of vegetable, including snapbeans, carrot, onions, beets, acorn squash and sweet potatoes. Just blend 1 teaspoon of ground nutmeg and 1/2 teaspoon of ground cinnamon into soft butter.

DELICIOUS — Nutmeg butter is delicious on a variety of vegetable, including snapbeans, carrot, onions, beets, acorn squash and sweet potatoes. Just blend 1 teaspoon of ground nutmeg and 1/2 teaspoon of ground cinnamon into soft butter.

DELICIOUS — Nutmeg butter is delicious on a variety of vegetable, including snapbeans, carrot, onions, beets, acorn squash and sweet potatoes. Just blend 1 teaspoon of ground nutmeg and 1/2 teaspoon of ground cinnamon into soft butter.

DELICIOUS — Nutmeg butter is delicious on a variety of vegetable, including snapbeans, carrot, onions, beets, acorn squash and sweet potatoes. Just blend 1 teaspoon of ground nutmeg and 1/2 teaspoon of ground cinnamon into soft butter.

DELICIOUS — Nutmeg butter is delicious on a variety of vegetable, including snapbeans, carrot, onions, beets, acorn squash and sweet potatoes. Just blend 1 teaspoon of ground nutmeg and 1/2 teaspoon of ground cinnamon into soft butter.

DELICIOUS — Nutmeg butter is delicious on a variety of vegetable, including snapbeans, carrot, onions, beets, acorn squash and sweet potatoes. Just blend 1 teaspoon of ground nutmeg and 1/2 teaspoon of ground cinnamon into soft butter.

DELICIOUS — Nutmeg butter is delicious on a variety of vegetable, including snapbeans, carrot, onions, beets, acorn squash and sweet potatoes. Just blend 1 teaspoon of ground nutmeg and 1/2 teaspoon of ground cinnamon into soft butter.

DELICIOUS — Nutmeg butter is delicious on a variety of vegetable, including snapbeans, carrot, onions, beets, acorn squash and sweet potatoes. Just blend 1 teaspoon of ground nutmeg and 1/2 teaspoon of ground cinnamon into soft butter.

DELICIOUS — Nutmeg butter is delicious on a variety of vegetable, including snapbeans, carrot, onions, beets, acorn squash and sweet potatoes. Just blend 1 teaspoon of ground nutmeg and 1/2 teaspoon of ground cinnamon into soft butter.

DELICIOUS — Nutmeg butter is delicious on a variety of vegetable, including snapbeans, carrot, onions, beets, acorn squash and sweet potatoes. Just blend 1 teaspoon of ground nutmeg and 1/2 teaspoon of ground cinnamon into soft butter.

DELICIOUS — Nutmeg butter is delicious on a variety of vegetable, including snapbeans, carrot, onions, beets, acorn squash and sweet potatoes. Just blend 1 teaspoon of ground nutmeg and 1/2 teaspoon of ground cinnamon into soft butter.

DELICIOUS — Nutmeg butter is delicious on a variety of vegetable, including snapbeans, carrot, onions, beets, acorn squash and sweet potatoes. Just blend 1 teaspoon of ground nutmeg and 1/2 teaspoon of ground cinnamon into soft butter.

DELICIOUS — Nutmeg butter is delicious on a variety of vegetable, including snapbeans, carrot, onions, beets, acorn squash and sweet potatoes. Just blend 1 teaspoon of ground nutmeg and 1/2 teaspoon of ground cinnamon into soft butter.

DELICIOUS — Nutmeg butter is delicious on a variety of vegetable, including snapbeans, carrot, onions, beets, acorn squash and sweet potatoes. Just blend 1 teaspoon of ground nutmeg and 1/2 teaspoon of ground cinnamon into soft butter.

DELICIOUS — Nutmeg butter is delicious on a variety of vegetable, including snapbeans, carrot, onions, beets, acorn squash and sweet potatoes. Just blend 1 teaspoon of ground nutmeg and 1/2 teaspoon of ground cinnamon into soft butter.

DELICIOUS — Nutmeg butter is delicious on a variety of vegetable, including snapbeans, carrot, onions, beets, acorn squash and sweet potatoes. Just blend 1 teaspoon of ground nutmeg and 1/2 teaspoon of ground cinnamon into soft butter.

## Garden Circle

Hibiscus Circle of the Sanford Garden Club met at the home of Mrs. H. G. Brown, Nov. 11, with Mrs. J. V. Jones as co-hostess.

After coffee and dessert the meeting was turned over to Mrs. J. E. Wood, who instructed the group in the making of satin roses for arrangements, corsages and lily pads. Some of these articles will be for sale at the circle's table at the Club Bazaar to be held at the Garden Center Nov. 18 and 19.

Mrs. Edna Burns brought hand-decorated cans in assorted sizes which members look to fill with goodies, also to be sold at the bazaar. A collection of items was brought to Mrs. Dick McLaughlin for wrapping surprise packages for the bazaar.

A business meeting followed reports of the board members being given by the president, Mrs. J. V. Jones.

World gardening chairman, Mrs. D. M. Paul, read of the request for the club's program and an offering was made for this.

The next meeting will be held at the home of Mrs. T. A. Burleigh and will be the Christmas party with exchange of gifts.

Members enjoyed this festive evening.

The next meeting will be held at the home of Mrs. T. A. Burleigh and will be the Christmas party with exchange of gifts.

Members enjoyed this festive evening.

The next meeting will be held at the home of Mrs. T. A. Burleigh and will be the Christmas party with exchange of gifts.

Members enjoyed this festive evening.

The next meeting will be held at the home of Mrs. T. A. Burleigh and will be the Christmas party with exchange of gifts.

Members enjoyed this festive evening.

The next meeting will be held at the home of Mrs. T. A. Burleigh and will be the Christmas party with exchange of gifts.

Members enjoyed this festive evening.

The next meeting will be held at the home of Mrs. T. A. Burleigh and will be the Christmas party with exchange of gifts.

Members enjoyed this festive evening.

The next meeting will be held at the home of Mrs. T. A. Burleigh and will be the Christmas party with exchange of gifts.

Members enjoyed this festive evening.

The next meeting will be held at the home of Mrs. T. A. Burleigh and will be the Christmas party with exchange of gifts.

Members enjoyed this festive evening.

The next meeting will be held at the home of Mrs. T. A. Burleigh and will be the Christmas party with exchange of gifts.

Members enjoyed this festive evening.

The next meeting will be held at the home of Mrs. T. A. Burleigh and will be the Christmas party with exchange of gifts.

Members enjoyed this festive evening.

The next meeting will be held at the home of Mrs. T. A. Burleigh and will be the Christmas party with exchange of gifts.

Members enjoyed this festive evening.

The next meeting will be held at the home of Mrs. T. A. Burleigh and will be the Christmas party with exchange of gifts.

## Mrs. Stinson Dinner Hostess

Mrs. Clyde Stinson entertained at supper Thursday evening at her home on West Sixth Street. The harvest theme was carried out in both decor and menu.

A horn of plenty overflowing with colorful fruit adorned the table. The supper table was overlaid with a blocked linen cloth. The brown background was printed in a fruit and grain pattern.

Her guests were provided trays and served themselves cafeteria style to a typical harvest meal. The fragrance of ham baked in cider, sweet potato pone, freshly baked hot rolls and pumpkin pies were pleasing and tempting.

Comfortably seated in the cozy living room everyone leisurely enjoyed their food and conversation. A formal arrangement of Finnish treated flowers invited compliments as did a magnificent Phyllis dill growing near the front entrance.

Guests lingered late appreciative of a most pleasant evening and their charming hostess. Invited were Mrs. Roy Tillis, Mrs. James Coona, Mrs. John Clark, Mrs. Dempsey Carney, Mrs. Henry Russell, Mrs. Henry McLaughlin and Miss Ella Lee Kirkhoff.

The man or boy who dreams of sleeping under the stars next summer ought to ask Santa for a new featherlight, waterproof blanket made of insulation materials originally developed for spacecraft. It folds to fit into a jacket pocket.

The blanket has corner grommets for tying it in place on a boat or tent.

The man or boy who dreams of sleeping under the stars next summer ought to ask Santa for a new featherlight, waterproof blanket made of insulation materials originally developed for spacecraft. It folds to fit into a jacket pocket.

The blanket has corner grommets for tying it in place on a boat or tent.

The man or boy who dreams of sleeping under the stars next summer ought to ask Santa for a new featherlight, waterproof blanket made of insulation materials originally developed for spacecraft. It folds to fit into a jacket pocket.

The blanket has corner grommets for tying it in place on a boat or tent.

The man or boy who dreams of sleeping under the stars next summer ought to ask Santa for a new featherlight, waterproof blanket made of insulation materials originally developed for spacecraft. It folds to fit into a jacket pocket.

The blanket has corner grommets for tying it in place on a boat or tent.

The man or boy who dreams of sleeping under the stars next summer ought to ask Santa for a new featherlight, waterproof blanket made of insulation materials originally developed for spacecraft. It folds to fit into a jacket pocket.

The blanket has corner grommets for tying it in place on a boat or tent.

The man or boy who dreams of sleeping under the stars next summer ought to ask Santa for a new featherlight, waterproof blanket made of insulation materials originally developed for spacecraft. It folds to fit into a jacket pocket.

The blanket has corner grommets for tying it in place on a boat or tent.

The man or boy who dreams of sleeping under the stars next summer ought to ask Santa for a new featherlight, waterproof blanket made of insulation materials originally developed for spacecraft. It folds to fit into a jacket pocket.

The blanket has corner grommets for tying it in place on a boat or tent.

The man or boy who dreams of sleeping under the stars next summer ought to ask Santa for a new featherlight, waterproof blanket made of insulation materials originally developed for spacecraft. It folds to fit into a jacket pocket.

The blanket has corner grommets for tying it in place on a boat or tent.

The man or boy who dreams of sleeping under the stars next summer ought to ask Santa for a new featherlight, waterproof blanket made of insulation materials originally developed for spacecraft. It folds to fit into a jacket pocket.

The blanket has corner grommets for tying it in place on a boat or tent.

The man or boy who dreams of sleeping under the stars next summer ought to ask Santa for a new featherlight, waterproof blanket made of insulation materials originally developed for spacecraft. It folds to fit into a jacket pocket.

The blanket has corner grommets for tying it in place on a boat or tent.

The man or boy who dreams of sleeping under the stars next summer ought to ask Santa for a new featherlight, waterproof blanket made of insulation materials originally developed for spacecraft. It folds to fit into a jacket pocket.

The blanket has corner grommets for tying it in place on a boat or tent.

The man or boy who dreams of sleeping under the stars next summer ought to ask Santa for a new featherlight, waterproof blanket made of insulation materials originally developed for spacecraft. It folds to fit into a jacket pocket.

**HEATING**  
Sales & Service  
24 hr. HEATING SERVICE  
LOU TEMPLE REFRIGERATION  
322-8612

**Penneys thru Saturday only!**  
ALWAYS FIRST QUALITY

**PRICES REDUCED on blankets...wrap up gift savings now!**

Plushly napped acrylic thermal for all seasons!

Give us get year-round comfort now! Cozy insulation in winter, a cooler in summer! Nylon bonded. Marvelously machine washable. Comes in a heavenly color range: white, pink, rosebabe, peacock, lavender, honey gold, moss green, blue.

72" x 90" Reg. 7.98, NOW... **6.50**

80" x 90" reg. 8.98, now... **7.50**

108" x 90" reg. \$15, now... **12.50**

Our lusciously soft acrylic electric blanket!

Our downy-soft blanket will give comfort wherever the weather! Lightweight and cozy! Nylon bonded. All at a most comfortable new low price! Pink, peacock, rosebabe, moss green, honey gold.

72" x 84" single control Reg. \$15, NOW... **12.50**

80" x 84" reg. \$20, now... **17.00**

\*Should defects in material or workmanship develop we will replace the blanket for 2 years, repair it for 3 years.

"Garden Lane" floral quilt-top bedspread!

Prettiest decorator spreads of the season in charming "Garden Lane" floral prints. Beautifully quilted tops finished with self-welting, gracefully flounced skirts. Get yours now at a great holiday savings!

twin size ..... **7.98**

full size ..... **8.98**

**CHARGE IT!** in Sanford Plaza Shop 'til 9 P.M. Monday through Saturday

# ALL BRANDS MILK 1/2 GALLON CARTON 49¢

NOT GLASS NO DEPOSIT



2460 PARK AVE.

HOURS: MON., TUES., WED. OPEN 'TIL 7; THURS. 8; FRI. 9 SATURDAY 8.

**HOLIDAY FAVORITES**  
AMERICAN BEAUTY  
**PUMPKIN**  
OR JACK-O-LANTERN  
**MASHED YAMS**  
17oz CAN **10¢**

**Libby's**  
**LOW-CALORIE FRUITS**  
17oz FRUIT COCKTAIL-APRICOTS OR PEARS - 15 1/2oz SLICED PINEAPPLE  
**5 CANS \$1**  
SAVE UP TO 45¢...EVERYDAY!

**EVERYDAY LOW PRICE!**  
**APPLE SAUCE**  
MONROE BRAND  
**8 17oz CANS \$1**  
SAVE UP TO 40¢ EVERYDAY!

SAVE UP TO 20¢...EVERYDAY  
**LUNCH MEAT** 3 FOR **89¢**

SAVE UP TO 20¢...EVERYDAY - ASSORTED  
**MOGEN DAVID WINES** 4/5 QT DECANTER **\$1.29**

SAVE UP TO 20¢...EVERYDAY - CONADINA CALIFORNIA  
**TOMATO JUICE** 6 1/2 CAN **29¢**

SAVE 25¢...EATWELL GREEN LABEL  
**TUNA FISH** 5 1/2oz CANS **\$1**

SAVE 25¢...EVERYDAY! AUNT NELLIE ASSORTED MIX 'EM UP!  
**FANCY VEGETABLES** 5 16oz JARS **\$1**

SAVE UP TO 17¢...EVERYDAY  
**FROZEN FRENCH FRIES** 2 LB PKGS **3 FOR \$1**

SAVE UP TO 13¢...EVERYDAY FROZEN ALL VARIETIES  
**BANQUET DINNERS** 2 FOR **87¢**

BURRY'S FAMOUS ASSORTED  
**CRACKERS** 3 FOR **49¢**

SAVE UP TO 17¢...EVERYDAY  
**ROSEDALE BARTLETT PEARS** 29oz CANS **3 FOR \$1**

**COMPARE!**  
OUR EVERYDAY LOW PRICE YOU PROBABLY PAY TO SAVE UP TO  
HILLSDALE SLICED PINEAPPLE 411 1/2 1.16 16¢ 415 49¢ 4¢  
DOLE SLICED PINEAPPLE 45 39¢ 10¢  
SUNNID GRAPE JELLY 29 39¢ 10¢  
SUNNID APPLE JELLY 29 39¢ 10¢  
BRAFT MAYONNAISE 55 62¢ 7¢  
OCEAN SPRAY CRANBERRY SAUCE 411 1/2 1.08 8¢

SAVE UP TO 20¢...EVERYDAY GOLDEN FLEET FROZEN  
**BREADED SHRIMP** LB BOX **97¢**

EVERYDAY LOW PRICE - SAVE 20¢ - 3 LB CAN  
**CRISCO SHORTENING** **79¢**

SAVE UP TO 25¢...EVERYDAY  
**LIBBY PEAS** 5 1/2oz CANS **\$1**

**COMPARE!**  
OUR EVERYDAY LOW PRICE YOU PROBABLY PAY TO SAVE UP TO  
HOLSUM PEANUT BUTTER 27.8oz 69 79¢ 10¢  
TASTI-DIET LOW-CAL PEACHES 3.4oz 41.19 41.16 16¢  
PLYMOUTH GRAPEFRUIT JUICE 4oz 31.95 41.17 22¢  
DEL MONTE TOMATO CATSUP 16oz 31.69 41.75 6¢  
FRENCH WORCESTERSHIRE SAUCE 4oz 41.19 41.16 16¢

SAVE UP TO 45¢...TRAPPY'S SLICED  
**FROZEN YAMS** 5 1/2oz PKGS **\$1**

SAVE 10¢...EVERYDAY - BATH TISSUE - ASS'T  
**NORTHERN TISSUE** 12 ROLL **99¢**

SAVE UP TO 45¢...MUSSEL MANN'S  
**APPLE JUICE** 5 29oz CANS **\$1**

FRENCH MUSTARD 2.5oz 29 35¢ 6¢  
JUNE BOY FRESH KOSHER DILLS 2.5oz 39 45¢ 6¢  
RUBBY BOY PEANUT BUTTER 4oz PLASTIC JAR 95 89¢ 6¢  
ROSEDALE PEACHES 2.5oz 31.79 41.76 8¢  
LIBBY SPICED PEACHES 1.5oz 51.19 41.45 45¢  
SUN NAD SEEDLESS RAISINS 1.5oz 21.55 41.58 3¢  
FLO-CANE SUGAR 5 LB BAG 49 63¢ 14¢  
CLAPP'S STRAINED BABY FOODS REG. JARS 61.55 41.58 4¢  
CRISCO SHORTENING 3 LB CAN 79 89¢ 20¢  
CAMPBELL'S VEG. BASE SOUPS 1/2oz CANS 71.19 41.09 9¢  
KOTEX SANITARY NAPKINS 12 39 45¢ 6¢  
SCOTT PLACE MATS 24 31.19 41.17 17¢  
SOFT WEVE BATHROOM TISSUE 2 ROLL PKG 41.19 41.16 16¢

SAVE UP TO 32¢...EVERYDAY ON FYNWRAP  
**ALUM. FOIL** 4 25 ft **\$1**

NOT LARGE NOT GIANT BUT KING SIZE  
**FAB, BOLD OR AJAX** DETERGENT \$1.43 ELSEWHERE **99¢**

**Libby's** **WHOLE SPICED PEACHES** 5 16oz JARS **\$1**  
SAVE UP TO 45¢...EVERYDAY!

**Discount Health and Beauty Aids, Too...**  
**PRELL liquid SHAMPOO** MED. SIZE - 6oz ELSEWHERE **48¢**  
**ARRID SPRAY** 4oz CAN - 1.00 ELSEWHERE **79¢**

85¢ ELSEWHERE  
**BRYLCREAM** .....70¢  
65¢ ELSEWHERE  
**TAME Creme Rinse** 4oz .....53¢  
2.25 ELSEWHERE (UNCURL)  
**TONI Perm. Refill** .....\$2.13

SAVE UP TO 21¢...EVERYDAY PANTRY PRICE  
**POTATO CHIPS** TWIN PAK **38¢**

SAVE UP TO 24¢...BRANDS...INST. POTATOES **4 \$1**

SAVE UP TO 21¢...EVERYDAY  
**PEANUT BUTTER** .....48¢

**HOLIDAY COOK WARE SALE!**

time-saving gadgets by EKCO  
DELUXE BEVERAGE BOY CAN OPENER  
BASTING AND PASTRY BRUSH  
SIX STAINLESS STEEL SKEWERS  
STAINLESS STEEL PEELER  
NATURAL ANGLE SERVING TONGS  
STAINLESS STEEL BUTTER KNIFE  
PASTRY CLAMPER AND TRIMMER  
STAINLESS STEEL STRAIN AND SERVE SPOON  
ALL PURPOSE KITCHEN MASH  
VERSATILE BLENDING FORK  
CHROME FINISHED LIFTER-DRAINER  
STAINLESS STEEL BLADE KITCHEN SAW  
FOUR-IN-ONE MEASURING SPOON  
CHROME FINISHED MEASURING SPOON  
STAINLESS STEEL SPREADER SPATULA

**3 MIX 'EM UP! FOR \$1.00**

CASE OF **24 10oz BOTTLES R-C COLA** **99¢** PLUS DEP.  
GOOD IN ALL ORLANDO, SANFORD, APOPKA, MT. DORA, AND WINTER PARK STORES

**Young** QUICK FROZEN GRADE 'A' BROAD-BREADED **TURKEYS**  
17-24 LB. SIZE **33¢**  
10-16 LB. SIZE **37¢**

PRICES GOOD THROUGH WEDNESDAY. QUANTITY RIGHTS RESERVED.

**Stock-Up Early**  
ALL FOOD FAIR Q/D STORES CLOSED NOV. 24th THANKSGIVING  
FOOD FAIR Q/D STORES IN MT. DORA, APOPKA AND SANFORD WILL REMAIN OPEN TIL 9:00 P.M. WED., NOV. 23rd.



2460 PARK AVE.

U.S.D.A. CHOICE **SIRLOIN OR FULL CUT ROUND STEAKS** **88¢** LB  
SAVE UP TO 31¢ PER LB

**Beef Sale!**  
**RIB STEAK** LB **78¢**  
T-BONE STEAK.....LB 98¢  
BONELESS CLUB STEAK.....LB 98¢

**Fresh** LEAN MEATY TENDER **Pork Butts** LB **43¢**  
SAVE 16¢ LB. LIMIT -1 PLEASE

**EVERYDAY LOW PRICE**  
**SLICED BACON** HICKORY RANCH BRAND **49¢** LB  
SAVE 20¢

EVERY DAY LOW PRICES IN OUR MEAT DEPT. **OLEO** 2 LBS **29¢**

SAVE UP TO 11¢ PER LB...EVERYDAY LEAN QUARTER SLICED **PORK LOIN** LB **68¢**

SAVE UP TO 20¢...EVERYDAY LEAN TENDER FRESH **GR. BEEF** 3 LBS **\$1.39**

SAVE UP TO 10¢ LB...EVERYDAY GRADE 'A' FRESH FLA. OR GA. **FRYERS** (WHOLE DRESSED) LB **29¢**

SAVE UP TO 11¢...EVERYDAY FARMER GRAY ALL MEAT SKINLESS **FRANKS** 12oz PKG **38¢**

SAVE UP TO 12¢ LB...EVERYDAY U.S.D.A. CHOICE **Chuck Roast** LB **45¢**

SOUTHERN STAR BONELESS COOKED **CANNED HAMS** 5 LB CAN **3.99** SAVE 1.00

SAVE 40¢...SOUTHERN STAR **CANNED PICNICS** 3 LB CAN **\$2.39**  
OLD FASHIONED **MILD DAISY CHEESE**.....LB 59¢  
KRAFT CHEESE SPREAD **VELVEETA LOAF**.....2 LBS 99¢  
GOLDEN BROWN **FISH STICKS**.....2 LB BOX 89¢  
FLASH FROZEN **GROUPER FILLETS**.....LB 49¢

SAVE 10¢...ALL MEAT SKINLESS **HERMAN'S FRANKS** LB **59¢**

**Fresh** FANCY RED EMPEROR **GRAPES**.....15¢

FOOD FAIR DAILY **PIE** EA. **38¢**

FOOD FAIR SPLIT CLOVERLEAF BUNS **ROLLS** 2 PKGS. OF 12 ONLY **55¢**

SPECIALLY SEASONED SLICED 1-LB. SIZE **Stuffing Bread** **29¢**

**Fresh** U.S. NO. 1 SWEET GOLDEN **CORN** **10 57¢**

**Fresh** RED DELICIOUS **APPLES** LB **18¢**

U.S. NO. 1 RUSSET BAKING **POTATOES** 10 LB BAG **59¢**  
FRESH FLORIDA **ORANGES**.....RACH 2¢  
FANCY RED **SWEET POTATOES**.....LB 10¢  
FRESH WINDOW BOX **CRANBERRIES**.....BOX 27¢

**COMPARE!**  
OUR EVERYDAY LOW PRICE YOU PROBABLY PAY TO SAVE UP TO  
BAKING HENS Quick Frozen Grade 'A' 3.8L 45L 7L  
CORNISH HENS Quick Frozen Grade 'A' 4.5L 49L 4L  
VEAL CUTLETS THIN MILK PED 4.99 4.99 10L  
CHUNK BOLOGNA 2 1/2 to 3 LBS 39L 49L 30L  
ROLL SAUSAGE Market Pride 1 1/2 Roll 39L 59L 20L  
SKINLESS FRANKS 2 1/2 LB BAG 99 119 20¢  
SMOKED SAUSAGE 2 1/2 LB BAG 99 119 20¢  
LEAN SPARERIBS 3 to 5 lb Avg. 49L 59L 10L  
TURKEY DRUMSTICKS Quick Frozen Grade 'A' 3.3L 39L 6L  
AMERICAN CHEESE Sliced 69L 79L 10L

FARMER GRAY BREAKFAST **LINK SAUSAGE** 12oz PKG **59¢**

FOOD FAIR **CREAM CHEESE** 2 1/2 33¢ 27¢

COOK QUICK FROZEN BEEF **CUBE STEAKS** 10oz PKG **89¢**





# "Feast on Butterballs and Fixins from PUBLIX!"



**South Carolina Standard**  
**Fresh Oysters** . . . pint **\$1.09**  
**Swift's Premium Sliced Corned Beef, Ham,**  
**Beef, Turkey** 3 **\$1.**  
**Herman's Orange Band Smoked**  
**Sausage** . . . . . 12 oz. **59c**  
**Fresh 'N' Flavorful Tarragon**  
**Wieners** . . . . . 12 oz. **45c**  
**Swift's Premium Boneless Toasty**  
**Hostess Hams** . . . **\$1.49**  
 (plus 100 extra 55¢ Green Stamps with coupon).

**PRICES EFFECTIVE**  
**MON., TUES., WED.**  
**NOV. 21-22-23**  
**1966**

**All Publix Markets**  
**CLOSED**  
 All Day Thursday, Nov. 24th  
**THANKSGIVING**

SWIFT'S PREMIUM GOVERNMENT INSPECTED  
 SHIPPED, QUICK-FROZEN, EVISC.  
**Butterball Turkeys**  
 20 lbs. and up **39c lb.**  
 10 lbs. to 19 lbs., 15 oz. **45c lb.**  
 6 lbs. to 9 lbs., 15 oz. **49c lb.**

**Armour's Star Flavorful**  
**Sliced Bacon**  
 1-lb. pkg. **65c**  
 • dairy specials •

**SAVE 28c**  
 KRAFT'S SMOOTH  
**Miracle Whip**  
**39c**

**SAVE 36c**  
 FRESH GROUND  
**Maxwell House**  
**49c**

**SAVE 17c**  
 MINOT WHOLE  
**Cranberry Sauce**  
**29c**

**SAVE 10c**  
 LUCKY WHIP  
**Topping**  
**39c**

**• frozen foods •**  
 Pictorial Sliced Strawberries . . . 3 10. **\$1**  
 Holloway House Baked Potatoes . . . 39c  
 Merion Frozen Bread Dough . . . 3 59c  
 Mrs. Smith's Pies Pumpkin Pies . . . 24. **49c**  
 SAVE 10c! Mrs. Smith's Mince Pies . . . 24. **49c**  
 SAVE 4c! Mrs. Paul's Sweet Potatoes . . . 12. **29c**

**18-inch Heavy Duty Aluminum**  
**Alcoa Foil** . . . . . 25 ft. **59c**  
 Pappadour Farm reg. or cornbread  
**Stuffing** . . . . . 8 oz. **31c**  
 Rustic Spiced Red or Green  
**Keiffer Pears** 3 14. **\$1**  
 Del Monte Tropical  
**Fruit Salad** . . . . . 16 oz. **35c**  
 Greenwood Pickled  
**Sliced Beets** . . . . . 16 oz. **22c**  
 Wyandotte Extra Large Pitted  
**Ripe Olives** 5 1/2 cans **\$1**  
 Wyandotte Large  
**Ripe Olives** 3 7 oz. **\$1**  
 Borden's Non-Such  
**Mince Meat** . . . . . 28 oz. **59c**  
 Borden's Non-Such With Brandy  
**Mince Meat** . . . . . 28 oz. **69c**  
 Cream & Blackwell  
**Mince Meat** . . . . . 18 oz. **39c**

**SAVE 25c! Green Giant**  
**Green Peas** 5 #303 **\$1**  
**SAVE 10c! Snowdrift (Limit 1 Please)**  
**Shortening** . . . . . 3 lb. **69c**  
**SAVE 29c! Cairo Beauty Candied**  
**Crispy Chips** 3 16 oz. **\$1**  
**SAVE 35c! Cairo Beauty Candied Sweet**  
**Dill Strips** . . . . . 3 16 oz. **\$1**  
 Delicious Raitic  
**Apple Rings** 14 oz. **29c**  
 Aunt Nellie's  
**Whole Onions** #303 **29c**  
 Pillsbury Pie  
**Crust Mix** . . . . . pack **38c**  
 Glad Wrap  
**Food Wrap** 100 ft. **29c**  
**SAVE 23c! Cairo Beauty Fancy Sweet**  
**Gherkins** . . . . . 3 12 oz. **\$1**  
**SAVE 4c! Pioneer's**  
**Mixed Nuts** 1 1/2 lb. **79c**

**Flour** . . . . . 5-lb. bag **49c**  
**SAVE 10c! Park Lane (V-C-S-N)**  
**Ice Cream** . . . . . half gal. **59c**  
**SAVE 33c! Dole Pineapple-Pink Grapefruit**  
**Fruit Drink** . . . . . 4 46 oz. **\$1.**  
**SAVE 33c! Libby's Mouthful Tomato**  
**Juice** . . . . . 4 46 oz. **\$1.**  
**SAVE 16c! Yellow Cling Halved or Sliced**  
**F & P Peaches** 4 #2 1/2 cans **\$1.**  
**SAVE 17c! F&P Fruit**  
**Cocktail** . . . . . 3 #2 1/2 cans **\$1.**  
**SAVE 15c! Ocean Spray Whole or Jellied Cranberry**  
**Sauce** . . . . . 2 #300 **39c**  
**SAVE 8c! Libby's Cannard**  
**Pumpkin** . . . . . 2 #303 **25c**  
**SAVE SAVE 15c! Green Giant**  
**Niblets Corn** 5 12 oz. **\$1.**

**EXTRA Green Stamps**  
 For Stuffing, Swift's Premium Roll Park Sausage per lb. 59c  
 (Expires Wed., Nov. 23, 1966)

**EXTRA Green Stamps**  
 Swift's Premium Boneless Hostess Hams  
 (Expires Wed., Nov. 23, 1966)

**EXTRA Green Stamps**  
 Treasure Isle P&D Shrimp Meats  
 1 1/2 lb. bag \$2.49  
 (Expires Wed., Nov. 23, 1966)

**EXTRA Green Stamps**  
 McCormick's Pure Black Pepper  
 4 oz. can 45c  
 (Expires Wed., Nov. 23, 1966)

**• down produce lane •**  
**Apples** . . . . . 4 lb. bag **59c**  
 Crisp Pascal  
**Celery** . . . . . 2 stalks **25c**  
 Green Ribbon Yellow  
**Squash** . . . . . lb. **15c**  
 Genuine Idaho Baking  
**Potatoes** . . . . . 10 lb. bag **79c**  
 Kwik's Delicious Fresh Fruit  
**Ambrosia** . . . . . 26 oz. jar **69c**

**Red Delicious**  
**Apples** . . . . . 4 lb. bag **59c**  
 Crisp Pascal  
**Celery** . . . . . 2 stalks **25c**  
 Green Ribbon Yellow  
**Squash** . . . . . lb. **15c**  
 Genuine Idaho Baking  
**Potatoes** . . . . . 10 lb. bag **79c**  
 Kwik's Delicious Fresh Fruit  
**Ambrosia** . . . . . 26 oz. jar **69c**

**Lotwick Files**  
**In Casselberry**  
 Casselberry and Oviedo today each reported one additional candidate qualifying for council posts while Longwood reported none filed as yet.  
 George W. Lotwick has filed in Casselberry to become the seventh candidate for the three open seats and Robert Cameron joined the four already filed in Oviedo.  
 All incumbents are seeking reelection in both Casselberry and Oviedo.

**Fire Racks**  
**Ki-Mar Plant**  
 An estimated \$7,500 in damage was estimated as a result of a fire at Ki-Mar Industries located on East Lake Avenue in Longwood Monday night.  
 The fire was discovered by the Longwood Police Department.  
 According to Fire Chief Brian Snow, the fire started in the paint shop section of the plant.

**Cancer Meet Set**  
 The Executive Committee of the Cancer Society will meet tonight at 7:30 at the First Federal Caucus Room.

**PUBLIX MARKETS**  
**SANFORD PLAZA**  
 Hwy. 17-92 and Osceola Dr., Sanford  
 HOURS: MON., TUES., WED., SAT., 8:30-7:00 THURS., FRI., 8:30-9:00  
**SEMINOLE PLAZA,**  
 Casselberry  
 HOURS: MON., THUR. SAT. 9 A.M. - 9 P.M.



By LARRY VERSHEL  
 Christmas decorations went up in Downtown Sanford today . . .  
 There will be a giant choral Christmas "Sing" at Park and First Dec. 15 . . . Plans being firm up now among the "We Care" merchants . . . Tentatively scheduled for 7 p.m. . . Many school choruses will participate.  
 Only about a half-dozen youngsters turned out this morning to fill out applications for the Job Corps at Seminole Action . . .

The city can't use paper ballots for the Dec. 8 election unless they decide to rescind a present city ordinance . . . It should come up for official action Monday night.  
 C. Vernon Mize, president of the Seminole County Board of Commissioners, other groups which have been invited to send representatives include the Casselberry City Council, Sanford City Commission, Sanford-Seminole Jaycees, South Seminole Jaycees, Seminole County Chamber of Commerce and South Seminole Civic Club.  
 Moderator of the panel will be Mize.  
 "Our desire is to provide factual information to the citizens of Seminole County on the matter, then the floor will be opened to questions and answers from the audience."  
 "Following the audience participation, an additional period will be provided for rebuttal by the panelists," Mize explained.  
 Controversy over location of the new courthouse arose when County Commissioners announced plans to build the new facility near the Sanford lakefront.  
 Representatives of civic and municipal groups in the south end of the county have protested the location and asked that the courthouse be placed in a more central location in the county.

Some 15 per cent of Seminole's population is still using outdoor privies . . . That's an improvement, according to County Sanitarian Val Robbins . . . 10 years ago it was 25 per cent . . . The worst area in the county is Midway . . . Some 50 per cent . . . There are only three sanitarians here to crack down on this practice . . .  
 We expected the city to be deluged with requests to use the Civic Center now that the ban on alcoholic beverages was lifted . . .  
 "Thus far only one . . . Of course, there will be one in January . . . The policemen want to hold off annual ball there."  
 Watch for a major expansion announcement soon from Cobla Boat Works . . . Will be from 20,000 to 30,000 square feet.  
 Good to see the City cleaning up the industrial park out by the lakefront . . .  
 That sure was a disappointing turnout at the County Fair last night . . . Very, very few showed up. Is this the way we support our county . . . during Farm-City week?  
 Ah, to be in school again . . . School kids here, of course, will be off Thursday and Friday. The Christmas vacation will start Dec. 19 and kids will return Jan. 2 . . .  
 Courthouse and City Hall will be closed Thursday.

Clifford McKibbin's special study committee on industrial potential held its first meeting this morning to map out plans for the group. Seated with McKibbin are Howard Hodges, Doug Stenstrom, Bryan Kimball, Vernon . . . and George Toulson . . .  
 Could not have picked six more qualified men. They hope to set up a special industrial commission (non-political) to get more industry here.  
**YOU CAN'T WIN DEPART-**  
**MENT** — One member of the South Seminole Jaycees already told us he wouldn't drive to Sanford to attend any forum on the courthouse.

# Threats And Confusion Reign Supreme At Courthouse Row Before Commission

Seminole County \* \* \* \* on the St. Johns River \* \* \* \* "The Nile of America"  
**The Sanford Herald**  
 Phone 322-2611 or 425-5808 Zip Code 32771  
 WEATHER: Cloudy and cool thru Wednesday.  
 VOL. 59 NO. 67 — AP Leased Wire — Established 1908 — TUESDAY, NOV. 22, 1966 — SANFORD, FLORIDA — Price 5 Cents

## Courthouse Forum Set Here Dec. 6

Public airing of the current controversy over location of the new Seminole County courthouse will be held Dec. 6 at 8 p.m. at the Sanford Civic Center.  
 C. Vernon Mize, president of the Seminole County Chamber of Commerce announced today that 11 persons, representing the various factions of the controversy have been invited to sit on a panel with the public invited to attend and give voice to their opinions.  
 Besides members of the Seminole County Board of Commissioners, other groups which have been invited to send representatives include the Casselberry City Council, Sanford City Commission, Sanford-Seminole Jaycees, South Seminole Jaycees, Seminole County Chamber of Commerce and South Seminole Civic Club.  
 Moderator of the panel will be Mize.  
 "Our desire is to provide factual information to the citizens of Seminole County on the matter, then the floor will be opened to questions and answers from the audience."  
 "Following the audience participation, an additional period will be provided for rebuttal by the panelists," Mize explained.  
 Controversy over location of the new courthouse arose when County Commissioners announced plans to build the new facility near the Sanford lakefront.  
 Representatives of civic and municipal groups in the south end of the county have protested the location and asked that the courthouse be placed in a more central location in the county.



**THERE'S A DEFINITE TECHNIQUE** to eating cotton candy and Marian Tucker, 12 year old daughter of Cecil Tucker, county agent, has it down pat. Soon as she finishes that she'll start on the popcorn. Brother John, Seminole County Fair agent last night with all kinds of exhibits and a sparkling midway by Deggeller Shows. (Herald Photo)

## Miamian Pleads Guilty In Circuit Court Case

A Miami man pleaded guilty in Circuit Court today to charges of breaking and entering with intent to commit a misdemeanor.  
 Leon Powe, who with Robert Hayes, broke through the roof of the Pincrest Rexall Drugstore, May 22, formerly pleaded "not guilty" on June 30 and was released on bail.  
 He was subsequently arrested and convicted on two charges of B&E in Dade County and sentenced to 10 years on each count in the state penitentiary.  
 Powe was brought here from Balford in Dade County and sentenced to stand charges in the local case. He is liable for an additional sentence of five years in the local case.  
 Judge Volts Williams, Jr., accepted the plea of guilty and ordered a presentence investigation. Powe's attorney asked for a waiver of the PSI, but it was denied.  
 Hayes, charged in the same case, was also in court, but asked for a continuance of his case. Request was granted and the case is expected to be heard in the spring term of court in February, 1967.  
 In addition to the B&E, Hayes is also charged with possession of burglary tools and a weapon.  
 Case of Roy C. Coleman which began Monday was continued today with final arguments in March. Texize is an associate branch of Freewax.  
 The company has employed six men, plus an office clerk and manager.  
 Shelly said he will not transfer to the Jacksonville plant, but will move to Greenville, S.C., around the first of December.  
 Coleman, a Cocoa man, is charged with grand robbery of an elderly couple, Oct. 25, 1965. Morris and Margaret Williams, owners of a small store in Jacksonville (near Oviedo) testified they were beaten and robbed of from \$750 to \$800 and a German Luger pistol.

## Company 'Economics' Blamed Texize Plant Plans Closing Of Facility

Texize Chemical plant, located at 25th St. and Lake Mary Road will close its facility here and relocate in Jacksonville, Wade Shelly, manager, announced today.  
 Reason for the move was listed as "economics."  
 "Not Sanford economics, but company economics," Shelly explained.  
 The manufacturing facilities have already been transported to Jacksonville and the plant will be finally closed when disposal of stock on hand is completed," he added.  
 The plant formerly belonged to Chemical Corporation of America and was purchased by the Freewax Company in March. Texize is an associate branch of Freewax.  
 The company has employed six men, plus an office clerk and manager.  
 Shelly said he will not transfer to the Jacksonville plant, but will move to Greenville, S.C., around the first of December.  
 Coleman, a Cocoa man, is charged with grand robbery of an elderly couple, Oct. 25, 1965. Morris and Margaret Williams, owners of a small store in Jacksonville (near Oviedo) testified they were beaten and robbed of from \$750 to \$800 and a German Luger pistol.

**Top Rating**  
 A superior rating in inspection was awarded the Lyman High School Greyhound Marching Band Saturday at the District 5 Marching Festival in New Smyrna Beach, according to Lyman Bandmaster John Blair.  
 The band was judged excellent in marching for precision drill and fancy dance step.

## Bulletin

**NEW YORK (UPI)**—Quartermaster Steve Spurrer of Florida today was named the Heisman Trophy winner for 1966 in overwhelming fashion over Bob Griese of Purdue, who finished second.

## World News In Brief

**Assessor Resigns**  
 TALLAHASSEE (UPI)—Mrs. Helen Bennett resigned today as Orange County tax assessor. Mrs. Bennett handed her resignation in person to Gov. Haydon Burns, citing health as her reason for leaving the office after 38 years combined service. No successor was immediately named.

**Peace Overture**  
 DORADO BEACH, P. R. (AP)—In an overture toward Republican unity Gov. George Romney of Michigan has offered to meet with Gov.-elect Ronald Reagan of California to "develop understanding" between the party's liberal and conservative wings.

**Perfect Landing**  
 O'HARA I. U.S.S. AMERICA (AP)—The jet fighter-bomber carrier's landing deck, snagged a cable and screeched to a sudden stop—a noisy but perfect landing. The pilot had nothing to do with it.  
 The F-4 combat plane was landed safely Monday on the America, the Navy's newest flattop, by a complex system of radar and computers operated by a control center deep inside the ship.

**'Surtax'**  
 NEW YORK (AP)—Former White House economist Walter Heller advocates a temporary surtax on income taxes, the kind of increase that House Republican Leader Gerald R. Ford says could be a "tragic mistake."  
 Heller said he would like to see the surtax used to pay for the cost of the Vietnam war.

**Rates Probe**  
 TALLAHASSEE (AP)—The Public Service Commission has been asked by two organizations to reopen hearings on rate charges by Southern Bell of Florida.  
 Both object to rates filed Nov. 11 by Southern Bell, in response to a commission order.

**Lukewarm**  
 UNITED NATIONS, N. Y. (AP)—The feud between Moscow and Peking is reflected in the lukewarm support the Soviet Union is giving to the current attempt to seat Red China in the United Nations.  
 Following loud demands by Albania and African radicals to throw the Chinese Nationalists out and give their seat to the Communist mainland regime, the Soviet appeal Monday seemed almost perfunctory.

**Heavy Lay-offs**  
 DETROIT (AP)—Auto workers laid off in current industry cutbacks can count on receiving at least 62 per cent of their wages for up to six months.  
 Even after that, a man with two years' seniority could draw \$50 weekly, plus \$1.50 a week for each dependent up to four, for six more months.

**Resigns Post**  
 WASHINGTON (AP)—Kathryn O'Hay Granahan, whose signature appears on the lower left hand corner of the nation's paper money, has resigned as treasurer of the United States.

## Alexander Denies Board Clamps Lid On Public Opinion

Veiled threats, innuendos, ambiguous questions and confusion reigned at the meeting of the County Commission today with Cliff Jordan of the courthouse committee of the South Seminole Jaycees appearing again to request a public hearing, but being unable to cite specifically what would be the exact subject of the hearing.

Commission Chairman John Alexander, after nearly an hour of listening to Jordan explosively remark, "The commission wishes to emphatically deny the implication that it has ever refused to answer any question put to this board. There has never been an attempt by this board to stop freedom of the people to state their opinions."

The remark was made following a question asked by Tom Pratt, president of the Jaycees, from the audience in which Pratt intimated that the commission is refusing to hear objections to the location of the new courthouse from South Seminole residents.

Commissioner W. Lawrence Swofford asked Jordan, "You people continually ask for a public hearing. What do you wish to have the public hearing about? Do you want one on re-location of the county seat, re-location of the courthouse, or, for what purpose are you making your request?"  
 Jordan and Pratt both insisted, "There has never been a question of re-location of the county seat."  
 "I only made a statement to the newspaper saying that a relocation fight might be necessary at some future time if our request for a public hearing was not given consideration," Pratt contended.

However, when Alexander asked Jordan if the Jaycees had discontinued efforts toward re-location of the county seat, Jordan answered, "No."  
 Pratt maintained that a public hearing was necessary in order that "all the people of South Seminole could be heard" with the reply from Alexander that all commission meetings are open to the public and any person requesting to be heard are given that consideration.

Jordan suggested that a study be made to determine the best location for the courthouse and given that consideration, the board agreed to the agenda for next week's meeting with the Jaycees to compile a list of questions they wish answered.

In other business, the board instructed County Attorney Harold Johnson to use "strong language" in a letter to the Public Service Commission seeking a clarification and intent of their enforcing state law regulating public utilities in Seminole County.  
 The commission overrode the recommendation of the Planning and Zoning Board to re-zone property fronting on SR 408 at Pearl Avenue from R-1 to C-1 for the contemplated use of a shopping center.



**FURNITURE CENTER**  
 Traditional Desk  
 50" x 22" x 30"  
 Seven drawers.  
 Cherry veneer finish  
 1100 French Ave., Sanford