

# Sanford Herald

Serving Sanford, Lake Mary and Seminole County since 1908

87th Year, No. 113 - Sanford, Florida

## NEWS DIGEST

### INSIDE

#### People

#### What's going on 'around town?'

What's going on out there? According to "Around Town," clubs and organizations are ending the year with acts of charity filling their hearts. And also of interest is a lot of social and civic news about your community in the limelight. You may even read about yourself. **See Page 5B.**

### BRIEFS

#### Rachel Lee featured

**SANFORD** — Rachel Lee, said to have been the only nurse ever employed at the Seminole County home (Old Folks Home), is the focus of a Black Medical exhibit currently on display at the Museum of Seminole County history, U.S. Highway 17-92 at Bush Blvd.

Dr. Alex Dickinson, chairman of the Seminole County Historical Commission said, "We want to expand the exhibit and we are appealing to anyone who may have photographs, mementos or stories to relate about Rachel Lee or other black medical personnel in the area, to please contact the museum."

Seminole County Historical Society President Lorraine Whiting commented, "We plan to have an open house in early spring, and would like to have a more comprehensive story to tell about the important role the black community played in the medical history of this county."

Lee's display includes her uniform and cap, diplomas, photographs and other articles which relate to her long service at the home and hours of volunteering to the citizens of Seminole County.

The phone number for the museum is 321-2469. The museum is open Tuesday through Friday from noon until 5 p.m.

#### January is...

The first day of the first month in a brand new year has arrived. Many individuals, businesses, governments, and areas have been looking forward to this day as the beginning of what they hope will produce a fresh new start for their future.

This day is observed as the beginning of the year, and as a public holiday in the United States as well as many other, (but not all) nations of the world.

The beginning of a new year hasn't always been on this day. Prior to the enactment of the British Calendar Act of 1751, many countries considered the start of the year on March 25, (approximating the vernal equinox).

Many specific observances are scheduled in various parts of the nation for the month. Among those designed to call attention to a particular situation, January is: Anniversary of the Emancipation Proclamation; Human Resources Month; March of Dimes Birth Defects Prevention Month; National Careers in Cosmetology Month; National Eye Health Care Month; National Hobby Month; and National Volunteer Blood Donor Month.

In honor of various food products, January is: National Soup Month, National Oatmeal Month, and National Pancakes for Breakfast Month.

For sports fans, January First is a day for football bowl games in the local area as well as across the nation.

One of the most unusual football bowl games will be held, as it has for many years, in Nova Scotia. The annual football game is always held between two teams, the Flushers and the Plungers. In Nova Scotia today, the big event is the Sewer Bowl.

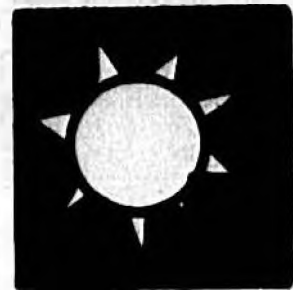
Compiled from staff reports

### INDEX

|                   |       |                     |        |
|-------------------|-------|---------------------|--------|
| Business.....     | 5A    | Florida.....        | 2A, 3A |
| Classified.....   | 6-10B | Health/Fitness..... | 7A     |
| Comics.....       | 7B    | Horoscopes.....     | 7B     |
| Greenward.....    | 7B    | Movies.....         | 6B     |
| Dear Abby.....    | 6B    | People.....         | 4-6B   |
| Deaths.....       | 5A    | Sports.....         | 1B, 2B |
| Editorial.....    | 4A    | Television.....     | 6B     |
| School Scene..... | 5A    | Weather.....        | 2A     |

**He who has begun has half done. Dare to be wise; begin.**

-Horace 66-8 B.C.



Today: Clearing and turning cooler. Lows from the upper 40s to mid 50s. Highs in the 60s.

For more weather, see Page 2A

# Safe haven in '95

## Shelter will open for abused spouses, kids

By VIKKI BOGORMAN  
Herald Staff Writer

**SANFORD** — With the start of the new year, will come the start of a much needed service in Seminole County.

Thanks to a donation of \$15,000 from the Seminole County sheriff's office (through the Foreiture Trust Fund of confiscated drug money), the Seminole County Safe House for abused women and their children, will open its doors in February.

"We are very, very pleased," said Linda Kuhn with the state attorney's office, who has spearheaded the efforts over the last half decade to raise the money for the facility. "This is the only facility like this in all of Seminole County."

Though the building is practically ready for occupancy, Kuhn is concerned that donations are still needed.

**See Shelter, Page 5A**



Sheriff Don Essinger, center, recently made a \$15,000 donation to the Safe House of Seminole County. On hand to accept the contribution were

board Treasurer Bonnie Summers; Executive Director Susan Denton; board President Linda Kuhn and board member Doris Hundley.

# 1994: It's a wrap!

## Lake Mary

By NICK PFEIFAU  
Herald Staff Writer

**LAKE MARY** — The year 1994 started on a sad note and ended on an eye toward growth and change for the Lake Mary City Commission. Commissioner A.R. "Doc" Jore, 63, died in January of a heart attack. He had won election to the commission in 1991.

Shirley Sawyer was subsequently elected to serve as commissioner for Jore's district four seat.

Several situations prompted a number of lengthy commission and public discussions during the year. An early one pertained to a man who was raising pigs. Even though the property was zoned agriculture, home owners in nearby residential areas voiced their objections. While the matter was not completely resolved, the pigs were gone later in the year, having grown to adequate size for their intended purposes.

Another situation to which residents voiced objections was the noise from aircraft flying over several residential areas, en route to landings at the Central Florida Regional Airport. Commissioner Gary Brender spent many hours with airport officials and others, and plans were eventually revealed toward attempting to resolve the noise with re-scheduled flight paths whenever possible to move the sounds to less populated areas.

As with other cities, Lake Mary was faced with flooding problems in June, caused by extensive rainfalls associated with Tropical Storm Gordon. With approximately a dozen miles of city streets unpaved, objections to the flooding were many.

City parks continued their way toward improvement. The largest.

**See Lake Mary, Page 5A**

## New beginning



Symbolizing a safe and happy transition from one year to the next, Guy Neville, resident of Lakeview Nursing Center, Sanford, portrays Father Time, 1994. Representing the New Year 1995 is baby Lindsey Taylor Kreinbring of Sanford.

## Longwood

By SANDRA ELLIOTT  
Herald Staff Writer

**LONGWOOD** — It was a year marked by change and plans for the future in Longwood including expansion of commercial sewer lines to attract and keep businesses needed to enlarge the city tax base.

New-city administrator W. Shelton Smith was hired and some management changes were enacted during budget making for the 1995 fiscal year.

Personnel matters are now headed by a person administrative officer who acts as a staff advisor to the city administrator and the personnel department is being abolished by amending the city code.

The city engineer now also performs the duties of director of public works in a job realignment which cut another management position from the city payroll. Former public works director Richard Kornbluth remained with the department as a supervisor.

New commissioners Jim Carrico and Bill Winston replaced former mayors Steve Miller and Paul Lovestrund, respectively, after the Nov. 8 election. Miller was defeated for re-election while Lovestrund chose not to run. Winston was unopposed for the commission seat.

At the election, Commissioner Iris Benson was chosen mayor with the backing of the two freshman commissioners, Annamarie Vacca and Ron Sargent round out the commission.

Two of the major issues tackled by the city during the year were improvements to Rangeline Road and an adult entertainment ordinance.

The commission imposed a moratorium on new residential developments.

**See Longwood, Page 5A**

# Sanford's renaissance continues

By NICK PFEIFAU  
Herald Staff Writer

**SANFORD** — It was a good year for Sanford residents. There were indications that a regrowth was beginning, and work continued to progress on the Seminole Towne Center.

The year saw many new businesses open, including many antique and collectibles shoppes. Only a few old-timers, such as Glen McCall's Touchton's Drug Store in downtown Sanford ended operations.

The Main Street Gallery, operated as a gathering place for the Sanford Historic Downtown Waterfront Association, SHDWA, and as a prominent art gallery, closed its doors in January. While a new location has been sought, it has not been re-established as of the end of the year.

**See Sanford, Page 5A**



City Commissioner A.A. McClanahan, left, was defeated by seven votes in December. Commissioner Lon Howell and City Attorney Bill Colbert read a letter McClanahan originally wrote protesting the election. He later decided



not to file a formal complaint. Right: Kerry Lyons, who defeated McClanahan, videotapes the meeting. Lyons takes office Jan. 3.

## FLORIDA BRIEFS



### New laws to take effect Jan. 1

TALLAHASSEE — Come New Year's Day, it will be easier to register to vote in Florida, farmers will be required to tell workers what pesticides they're using and state panels should include more women and minorities.

Other Florida laws taking effect Jan. 1 impose tougher penalties on young criminals, cap increases in property tax appraisals for homeowners, increase a tax on recyclable containers and apply ethics restrictions on high-ranking state employees.

Under the so-called "motor voter" law, residents can register to vote when they apply for drivers licenses, food stamps or library cards. They also can register by mail. The changes were required by the National Voter Registration Act enacted in 1993.

Anyone who wants to register to vote no longer will be required to appear before an elections supervisor or deputy supervisor.

Officials expect the new law to boost the number of registered voters although they don't know if it will cause more people to vote.

"Most people think there will be a significant increase, but to what degree we don't have any idea," said Sarah Jane Bradshaw, staff director of the House Ethics & Elections Committee.

Another law requires farmers to tell their workers what pesticides they are exposed to.

Legislators passed the law after migrant farm workers from around the state traveled to the Capitol to lobby the proposal.

The law enables farm workers or their doctors or other representatives to get documentation about the chemicals within two days of the request. It also prohibits farmers from retaliating against workers who seek information about pesticide use.

Also taking effect is a so-called "gender balance" law making it a goal for state panels to appoint women and minority members proportionate to their numbers in the state's population.

A similar bill that required those appointments in 1993 was vetoed by Gov. Lawton Chiles because he believed it would set quotas.

Part of a sweeping juvenile justice program passed in 1994 provides new penalties for serious offenders and gives prosecutors more flexibility in filing charges.

The reforms were sparked by a rash of violent crimes involving teen-agers, including the murder of a British tourist during a botched robbery at a highway rest stop in North Florida in September 1993. Four teens were charged with the killing.

The changes taking effect Jan. 1 create a new level of detention for the worst young criminals and allow judges to sentence high-risk youths to 18 months to three years in a juvenile detention center where they will receive counseling and education programs.

Currently, judges decide how long juveniles will remain in juvenile detention with the lengths of stay usually only a few weeks or months. The new law provided funding to add 300 beds for serious offenders.

"It's obvious our adult prisons don't do a good job rehabilitating," said Manatee County Sheriff Charlie Wells. "If we are to do any good, we should start at this younger age."

The new law reduces the age youths can be charged as adults for armed robbery, armed burglary and other serious crimes from age 18 to 14.

It also allows prosecutors to file charges against a youth of any age who has three previous felony convictions and has served three stints in juvenile detention.

Homeowners could also see some relief from rising property taxes under a constitutional amendment set to begin Jan. 1. The measure, known as Save Our Homes, limits annual increases in property tax appraisals.

The amendment was approved by voters in 1992. It is supposed to limit the annual increases in the appraised value of homestead residences to 3 percent, the inflation rate, the change in a home's market value, or whichever is lowest.

Also Jan. 1, the state's Advance Disposal Fee will increase from 1 cent to 2 cents on sealed cans, bottles, jars and beverage containers from five ounces to one gallon with recycling rates of less than 50 percent and that haven't been exempted from the fee.

"The increase to two cents is a greater incentive for consumers and manufacturers to seek out recycled or recyclable containers," said Virginia Wetherell, secretary of the Department of Environmental Protection.

More than 60 percent of the containers originally subject to the fee, which took effect in October 1993, were granted exemptions last July because they met recycling thresholds.

Another new law will prohibit appointed state officers and high-ranking officials and employees of the State University System and Public Service Commission and other state agencies from lobbying their former agency for two years after leaving office or employment.

The law also imposes the same ban on elected school district officers and authorizes school districts to place the same restriction on appointed officers and employees.

Under the changes, civil penalties that the state Ethics Commission can recommend increase from \$5,000 to \$10,000.

From Associated Press reports

# Building for the future

## County schools stay on track of progress

By VICKI BOGOMER  
Herald Staff Writer

SANFORD — Though the make up of the Seminole County school board did not change, despite an election, the district is steadily heading along a varied path to a time of great change.

The November elections, gentle and uncharacteristically quiet, brought no change to the board. Sandy Robinson was unchallenged for the seat she originally took in 1990 and Jeanne Morris, retained her seat in a courteous race against retired Greenwood Lakes Middle School principal Ted Barker.

"I think the results were a vote of confidence for the way we are doing things here," Robinson said.

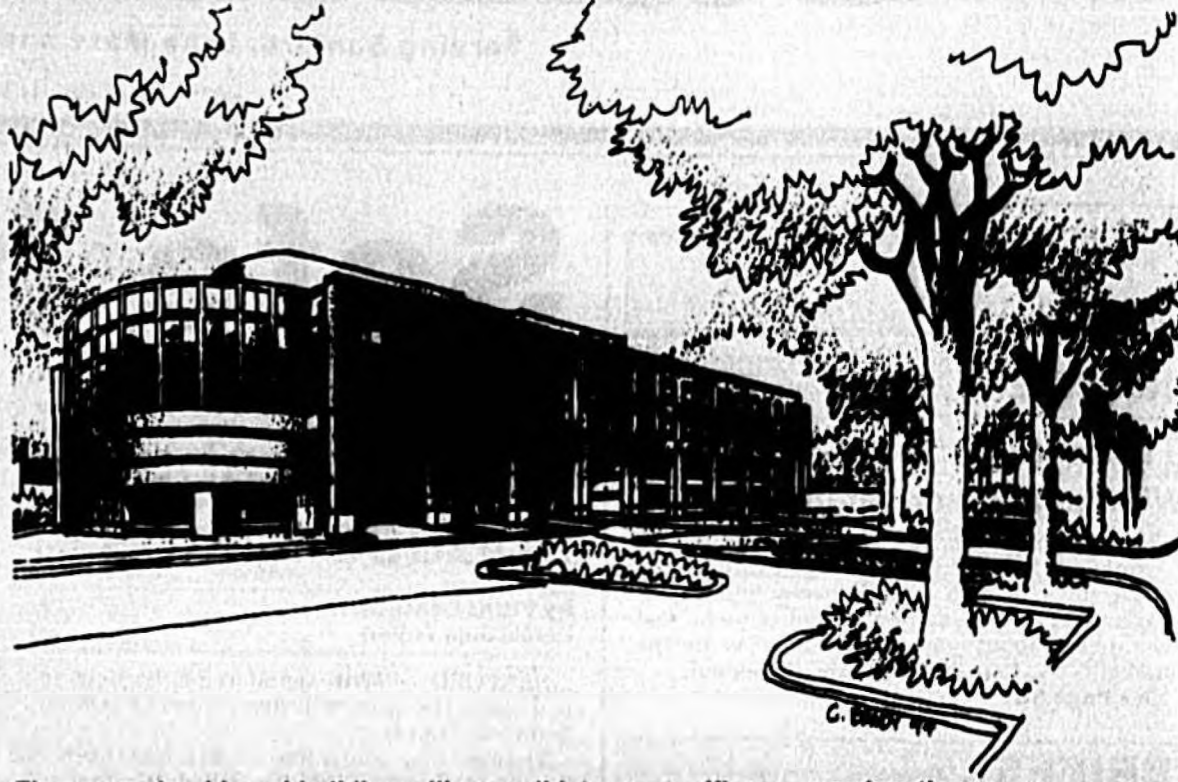
At the start of the year, the school board unveiled the plans for the construction of the new educational services building (board headquarters) on the extension of Lake Mary Boulevard in extreme southern Sanford.

The four story building is rising quickly on the plot of land just to the east of U.S. Highway 17-92. It is expected to be ready for occupancy by the fall.

"It's exciting to watch the building going up," said Supt. Paul Hagerly.

The facility will house all of the departments that are currently in the district offices on Mellonville Avenue in Sanford, plus those housed in a number of outmoded ancillary buildings and portable offices currently scattered around the county.

"We're prepared for the growth and changes that are going to come to this district,"



The new school board building will consolidate many offices in one location.

said Diane Kramer, executive director for facilities planning. "This building will grow with us."

Throughout the year, safety for the students and teachers in the schools has been an issue of great concern to the district.

March ushered in Violence Free Month in the schools. Festooned in white ribbons to remind all of the peace they hoped to achieve the students and the buildings were a sparkling testament to the hopes of those who feared for their safety and the safety of the children.

Even prior to the official celebration, students at Milwee Middle School began producing a weekly crime prevention show on their in-school television station; students at several schools trained to become peer mediators to diffuse violence before it erupts; Lakeview Middle School students created an award-winning rap to musically voice their opposition to the violence in the schools and elsewhere in society.

Few gun-related incidents were reported in the schools this year, however.

In April, a group of teens, most of them Lake Mary High School

students, "trashed" the home of a fellow student with whom they were feuding. With the district's blessing, Sheriff Don Ealinger required the teens and their parents to clean up the house.

Now that ground has been broken on the new Winter Springs High School, the preliminary work has begun to change the attendance zones in the district high schools to accommodate the new school. Seminole High School supporters are working to ensure they are given an equal number of students when the students are re-

□ See Schools, Page 5A

# Murder cases top year's court action

By SANDRA ELLIOTT  
Herald Staff Writer

SANFORD — Three high-profile murder cases tried during 1994 were so unusual they could have been the basis for segments on "Unsolved Mysteries." In two of the cases, no victim's body was ever found. In the third case which originated in 1981, the victim was found but the suspect disappeared.

The trial of tolepea dancer Michele Roger drew national publicity when details emerged about how her family disposed of her boyfriend's body after she stabbed him in the Oviedo condominium they shared. Roger's attorney Mark O'Mara is appealing her conviction of second degree murder. His request to modify or reduce her sentence was rejected last week by a circuit court judge.

She was sentenced to 17 years in prison for the 1992 stabbing death of David Richmond. She claimed the stabbing was in self defense and she was a victim of battered spouse syndrome.

The Roger family did not report Richmond's death to authorities. Michele's father, Will, and brother, Kenneth, removed the body rolled in carpet. The family patriarch burnt the body then mixed the ashes with concrete forming blocks. Later, the father and son tossed the blocks into the ocean.

Until just before Michele's trial, the family claimed they last saw Richmond heading to south Florida to do work after Hurricane Andrew.

The two men are expected to enter pleas to perjury, tampering with evidence and failure to report a death in January. Michele's mother, Agnes, pleaded guilty to failing to report a death earlier this month, was placed on supervised probation, ordered to do community service, pay a fine and court costs.

A circuit court jury recommended Anton Daryl Meyers die in the electric chair after convicting him of first degree murder in the 1987 disappearance of Lake Mary teen, Kathy Engle. Her body was never found. Meyers is awaiting sentencing by Judge Alan A. Dickey, who is recovering from surgery and is expected to return to the bench in February. The judge makes the final sentencing decision and may either impose the death penalty or life in prison.

Some of the key state witnesses against Meyers were inmates with him in various correctional facilities. They claimed Meyers described killing the teen by sitting her throat with a knife after she rebuffed his sexual advances. The defense contended the prosecution witnesses lied for favors in their own cases.

In a six-year-old murder case, Marie Coffield is awaiting sentencing after pleading guilty to first degree murder in the stabbing death May 1, 1988 of Li Teh Vu, owner of Mr. C's Southern Fried Chicken, 2100 S. French Ave. Coffield entered a plea in the case and waived a

□ See Courts, Page 5A



Anton Daryl Meyers



Michele Roger



Marie Coffield

## THE WEATHER

| EXTENDED OUTLOOK     |                      |                       |                         |                        |
|----------------------|----------------------|-----------------------|-------------------------|------------------------|
|                      |                      |                       |                         |                        |
| SUNDAY<br>Fair 65-85 | MONDAY<br>Fair 65-85 | TUESDAY<br>Fair 75-95 | WEDNESDAY<br>Fair 75-95 | THURSDAY<br>Fair 75-95 |

**Sanford Herald**

Sunday, January 1, 1995  
Vol. 87, No. 113

Published Daily and Sunday, except Saturday by The Sanford Herald, Inc., 300 N. French Ave., Sanford, Fla. 32771

Second Class Postage Paid at Sanford, Florida and additional mailing offices.

Postmaster: Send address changes to THE SANFORD HERALD, P.O. Box 1607, Sanford, FL 32773-1607.

Subscription Rates  
(Daily & Sunday)

|          |               |         |
|----------|---------------|---------|
|          | Home Delivery | Mail    |
| 3 Months | \$18.00       | \$24.00 |
| 6 Months | \$36.00       | \$48.00 |
| 1 Year   | \$72.00       | \$96.00 |

Florida Residents must pay 7% sales tax in addition to rates above.

Phone (407) 323-3611.

**LOCAL FORECAST**

Tonight: Variable cloudiness. Low around 50. Southeast wind 5 mph.

Outlook for remainder of new year's weekend: Partly cloudy. A chance of showers Monday. Highs in the mid to upper 70s and lows around 60.

Monday: Fair and cool. Lows in the lower 40s north to lower 50s south. Highs in the lower to mid 60s.

**TIDES**

**MONDAY**  
SOLUNAR TABLE: Min. 5:40 a.m., 6:00 p.m.; Maj. 11:50 a.m., 12:20 p.m. TIDES:  
Daytona Beach: highs, 8:31 a.m., 8:48 p.m.; lows, 1:58 a.m.,

**MOON PHASES**

|                 |                 |
|-----------------|-----------------|
|                 |                 |
| NEW<br>Jan. 1   | FIRST<br>Jan. 8 |
|                 |                 |
| FULL<br>Jan. 16 | LAST<br>Jan. 23 |

2:39 p.m.: New Smyrna Beach: highs, 8:36 a.m., 8:51 p.m.; lows, 2:01 a.m., 2:44 p.m.; Cocoa Beach: highs, 8:51 a.m., 9:06 p.m.; lows, 2:16 a.m., 2:59 p.m.

# The Way We Were: Two funerals

By GRACE E. STINECIPHER  
Herald Correspondent

Accounts of two funeral services are among the clippings in my mother's scrapbook; both were held at First Presbyterian Church and were officiated at by Dr. E.D. Brownlee, pastor. Their deaths occurred in 1928 or 1929.

The first funeral was of Alfred Foster, hailed as one of Sanford's most prominent businessmen. According to the article, Mr. Foster died suddenly in Monticello while on a short business trip. During the funeral services, a brief program was rendered by a mixed quartette composed of Martin Stinecipher, Mrs. Herbert Russell, Miss Helen Vernay, and Lewis E. Rietze. Mrs. F.S. Vernay was accompanied.

A few honorary pallbearers are listed but the rest are lost since my mother didn't "continue on page three." These included Dr. Samuel Puleston, Frank P. Forester, W.L. Henley, J.F. McClelland, E.D. Mobley, Joe Cameron, and Boston Steele.

The only mention that Peter Schall gives of Alfred Foster is of his being one of a group of citizens who were for the Sanford to Titusville Canal. They

had paid for a full page ad expressing their views in the Aug. 16, 1927 edition of the Sanford Herald. There was also an ad, paid for by Lake Mary's Frank Evans, warning of the high cost of taxes the canal would engender. The Herald endorsed the canal, calling it a "vital need."

If anyone has further information on Alfred Foster, please contact me.

The other funeral was that of Mrs. Mattie French Leavitt, 69, pioneer resident who died suddenly following an attack of acute indigestion. Again there was a mixed quartette, this one composed of Mrs. A.C. Fort, Mrs. Herbert Russell, Joe Harrold, and Martin Stinecipher. Honorary pallbearers were Dr. H.W. Rucker, H.C. DuBose, Frank P. Forester, B.F. Whitner Sr., A.T. Rossiter, and C.E. Henery. Active pallbearers included Kent Rossiter, S. Runge, L.T. Frazier, J.H. Beck and Fred Wilson. The rest are lost.

When I read this, I realized that Mrs. Leavitt must be a descendant of Dr. Seth French for whom French Avenue is named. At the Sanford Museum I found a history of the French and related families compiled by

a descendant. And yes, Harriet French Leavitt was the daughter of Seth and Harriet French. She married William Fowler Leavitt, an Orange City resident, Nov. 27, 1879. They raised their three children (Helen Louise, Frances Adele, and William) at their home at 817 West Third St. Frances married Glen Columbus Hayman and they were the parents of Harriet French Hayman Boyd who continues to live in Lake Mary.

Mrs. Leavitt was a charter member of the Sanford Woman's Club and a member of First Presbyterian Church. According to her obituary, she was in good health until she suffered a fall from her porch after which her health gradually declined until she died June 30, 1929. Harriet Boyd, who along with her mother lived with Mrs. Leavitt, still owns this house on West Third Street.

There is a wealth of information on the French family in their history book; I will do more research on them later.

Probably in the summer of 1988, my dad's brother and sister, James and Alice, from Chattanooga, were houseguests

□ See Stinecipher, Page 5A

## POLICE BRIEFS

### Traffic stop

Meivin Eugene Hunter, 20, 701 E. Eighth St., was stopped by Sanford police early Thursday near the intersection of Fulton Street and Elm Avenue. He was charged with driving with a suspended/revoked license, and possession of cocaine residue.

Sheriff's deputies arrested David Allen Slabodnik, 31, of Deltona, early Thursday. Deputies said they found him in a vehicle with the lights off, parked near a closed business on Hickman Circle. Following an investigation, deputies arrested him on charges of possession of a controlled substance, and possession of drug paraphernalia.

### Incidents reported to Sanford police

An estimated \$60 in meat was reported stolen Wednesday from a refrigerator at a residence in the 100 block of Castle Brewer Court.

A TV, VCR and other items valued at \$600 were reported stolen Wednesday from a residence in the 100 block of Cedar Avenue.

A lawnmower and bike, valued at \$520, were said to have been taken from a patio Wednesday at a home in the 400 block of Bay Avenue.

Tools and accessories valued at \$300 were reportedly stolen Wednesday from the rear of a pickup truck parked in the 400 block of E. 24th Place.

Aluminum extrusions valued at \$1,500 were reported missing Wednesday from a business in the 2800 block of Meltonville Avenue.

Six company vehicles were reportedly burglarized Wednesday, at a business in the 2800 block of S. Park Avenue. No report was immediately available on the items taken or a dollar amount.

### Stolen vehicles found

A sheriff's deputy and Altamonte Springs police uncovered a trio of stolen vehicles during a short time period Thursday. One car, owned by a Sanford woman, was located in the parking lot of Florida Hospital, Altamonte. Deputies also uncovered a Toyota pickup on S.R. 436 in Fern Park, reported stolen in Orlando. With Altamonte Springs police called in, a third vehicle, a 1981 Toyota, also reported stolen in Orange County, was located in the Florida Hospital parking lot. Deputies indicated that the three recovered vehicles had some similarities, and it is suspected the thefts may have been connected.

### Traffic stop

Jeffery Scott Biddle, 30, 111 Shawnee Trail, Geneva, was stopped by deputies on Old Geneva Road Thursday. He was charged with driving with a suspended/revoked license.

### Triple charges

Lake Mary police conducted a traffic stop on Hidden Lake Drive Thursday, and arrested all three persons in the vehicle. The driver, identified as Jamie E. Sapp, 18, of Winter Garden, was charged with driving under the influence of alcohol, possession of under 20 grams of cannabis, and possession of drug paraphernalia.

Two women in the car, identified as Kerri Lynn Summar, 18, of Orlando, and Audrey Branigan, 18, also of Orlando, were each charged with possession of under 20 grams of cannabis, and possession of drug paraphernalia.

### Warrants

Deputy Andrew Sylva, 21, 1701 McCarthy Ave., Sanford was issued a warrant for contempt of court Thursday.

John Murphy Rowe, 33, 174 Lakeside Drive, Sanford, was served a warrant at the jail Thursday. He was wanted for failing to appear on a charge of driving with a suspended license.

John Ashford, 45, 89 Castle Brewer Court, was located at his residence by Sanford police Thursday. He was wanted on two warrants for violation of probation on convictions of dealing in stolen property.

Robert Lewis Gothelf, 39, 200 S. Laurel, was arrested at his residence by Sanford police Thursday. He was wanted on a warrant for violation of probation on a conviction of lewd and lascivious assault on a child.

Carol Ann Cooper, 35, 104 Driftwood Lane, Sanford, was located by deputies at her residence Thursday. She was wanted on three warrants for obtaining property with worthless checks.

Ray Jackson, 32, 2430 Church Street, Sanford, was located at his home by deputies Thursday. He was wanted for violation of probation on a conviction of driving with a suspended/revoked license.

### Domestic cases

Manwing Ho, 47, 1565 Missouri Ave., Sanford, was arrested by deputies on Bennett Drive in Longwood Thursday, following a reported fight with his wife. He was charged with battery, domestic violence.

Angel Luis Calderon, 30, 6601 S. Sanford Avenue, was arrested by Sanford police at his residence Thursday following a reported altercation with his sister. He was charged with battery, domestic violence.

## 1994: It's a wrap!

# County look: What's new?

By J. MARK SANFORD  
Herald Senior Staff Writer

SANFORD — A new highway, new commissioners and new flooding worries led Seminole County's stories last year.

The May 7 opening of the long-awaited Seminole Expressway heralded what many believe to be a new era of growth for north Seminole County. First visualized nearly 30 years ago, the 12-mile segment to the Central Florida GreeneWay is expected to bring commerce to Sanford's airport, jobs to north Seminole County and shoppers to the new Seminole Towne Center.

This year saw several election surprises as short-lived Democratic inroads to the Seminole County commission were closed off. Democratic appointee Carlton Henley and first-term Larry Furlong were both tossed off the commission, despite their popularity with many Republicans.

And November's Tropical Storm Gordon caused widespread neighborhood and street flooding and left damages estimated at \$500,000.

### Road to progress...

May saw the opening of the \$200 million Seminole Expressway, seen as a major step forward in the growth and development of the county. The 12-mile segment between Aloma Avenue near Winter Springs and U.S. Highway 17-92 in Sanford extended the Central Florida GreeneWay to provide a 55-mile circumferential bypass to congested Interstate 4.

Well, almost a bypass. Initial projections of usage were too low to convince state road officials to invest more than \$123 million towards the \$190 million connection to I-4, leaving a six-mile "missing link" in the system.

The link became the top transportation priority for every road agency in Central Florida and was named a top priority for the state by state transportation secretary Ben Watson.

Congressman John Mica, R-Fern Park, fought hard for congressional funding for the final link and was successful in bagging a preliminary commitment and \$1 million towards the \$68 million federal share of the \$68 million I-4-expressway interchange.

A bypass was first envisioned in 1968 when regional Metropolitan Organization anticipated congestion on the newly-opened I-4. Orange and Seminole County planners designed different tollroad systems during the 1980s with a link at State Road 426.

Construction began in October 1991, but delays began early when roadbuilders, reluctant to pay local prices for fill dirt, sought other sources. Progress dragged up to a year behind schedule. But with state arm-twisting, the road was opened four months after the hoped-for December 1993 opening. Traffic built steadily after the opening.

The link has already influenced the construction of hundreds of homes and millions

of square feet of retail and industrial development. The future I-4 link played a major role in the development of the Seminole Towne Center mall under construction in west Sanford.

### New faces...

This year saw an end to the first Democratic influence on the Seminole County commission in more than a decade. Carried away by a resurgence of nationwide GOP anger, Carlton Henley lost in the October primary runoff and Larry Furlong, who became the first Democrat in 1990 to be elected in 14 years, lost to political newcomer Winfield Adams.

Both Henley and Furlong had support from Republicans, little help to Henley in the primaries when facing Perry, who appealed to many mainstream Democrats. Henley was appointed to the commission one year before by Gov. Lawton Chiles to fill a vacancy left by the death of Bob Sturm, a Republican.

Furlong had stunned politicians in 1990 by defeating GOP stalwart Sandra Glenn. Glenn was one of the most influential political leaders in the county and had raised five times the funding of the Furlong campaign.

### Water, water everywhere

Tropical Storm Gordon blew through south Central Florida, leaving a soggy, eight-inch calling card. Neighborhoods and businesses in south Seminole County were flooded and dozens of streets were closed because of flooding. In the days to follow, several homes along the south shore of Lake Jesup flooded and a portion of the Lake Monroe embankment was washed out.

A federal disaster team toured the county and found \$500,000 in damages, but did not recommend emergency loans and grants for the damages.

Although regional water managers feared continued flooding as stormwaters from upriver worked their way northward, the impact of the additional water was never felt.

### Other events...

The year saw a shift for the Seminole County Sheriff's Office from a traditional patrol to a community focus. Armed with 10 new deputies, Sheriff Don Eslinger restructured the dozen patrol zones in the county to create 28 "community service areas" and assigned deputies to those areas. Several deputies were assigned to patrol their own neighborhoods.

As a result, deputies were routinely seen on residential streets, providing citizens closer contact with their law enforcers.

1994 saw renewed focus on the county's Yankee Lake sewage treatment facility west of Sanford. Five years after the

facility was supposed to start up, planners decided to dispose of a portion of highly-treated wastewater from the plant on the property. Eventually, Yankee

Lake wastewater will be used to irrigate soccer fields, golf courses and landscaping throughout the northeastern areas of the county.

## CARPET MILL DIRECT

MON. - THURS. 9-6 • FRI. & SAT. 9-4

# CARPET

# 4 DAYS ONLY!!

# 3 ROOMS for \$599\*

(Installed with upgraded pad) Reg. \$848

\$200,000 OF CARPET IN STOCK

HUGE SELECTION

PRICE INCLUDES EXPERT GUARANTEED INSTALLATION, UPGRADED PAD, NO EXTRA COST FOR MOVING FURNITURE OR TAKING UP YOUR OLD CARPET.

- QUALITY EXPERT GUARANTEED INSTALLATION
- NO HIDDEN CHARGES! - FOR TAKING UP OLD CARPET
- INSTALLED OVER PAD - FOR SPECIAL CUTTING OR FITTING
- FOR METAL
- FOR REMOVAL OF OLD CARPET
- GUARANTEED LOWEST PRICES.
- FREE SHOP-AT-HOME SERVICE
- 30 YEARS EXPERIENCE
- FINANCING AVAILABLE OR 90 DAYS SAME AS CASH (W.A.C.)

TOP BRAND MILLS FIRST QUALITY GOODS

LAYAWAY PLANS, TOO

2910 Hwy. 17-92 • Orlando Br., Sanford • (407) 324-8888  
(2 Blocks North of Airport Blvd.) Across From AMCO TRANS

OR \$2500 MO.

(Financing Available) With Approved Credit

OR 3 MONTHS NO PAYMENT NO INTEREST

**MUST HURRY**

GOOD WHILE QUANTITIES LAST

SALE ENDS SOON HURRY IN

\*BASED ON 40 SQ. YD.

**FREE SERVICE MASTER CLEANING KIT**

With Quantities W/Copy of this Ad



**Here she comes...**  
Left to right, Cheryl Gardner and Rod Layer greet Misa Florida, Megan Welch, at a recent meeting of the Sanford Historic Downtown Waterfront Association. The event was to launch planning efforts toward the Misa Sanford Pageant, to be held Feb. 18, at the Sanford Civic Center. Layer, president of SHWDA, is urging any individuals interested in participating, to attend an orientation meeting, and meet with Pageant Director Cheryl Gardner, Friday, Jan. 6, 7:30 p.m., at "The Studio" on E. First Street in Sanford. For additional information, phone 323-2168.

JCPenney

## New Year's Day

# 1¢ SALE

Buy one of these New Year's Day Items At Regular Price, And Get A Second Item For Just 1¢

| FOR WOMEN  | FOR MEN  | FOR HOME  |
|--|--|---|
| <p>BUY ANY REGULAR PRICED MISSY CAREER JACKET AND GET A CAREER SKIRT FOR 1¢</p> <p>BUY ANY SATIN STRETCH BRA AT REGULAR PRICE AND GET THE SECOND FOR 1¢</p> <p>BUY ANY REGULAR PRICED MISSY LONG-SLEEVE BLOUSE AND GET A SECOND OF EQUAL OR LESSER VALUE FOR 1¢</p> <p>BUY ANY MISSIE HUNT CLUB® JEAN AT REGULAR PRICE AND GET A HUNT CLUB® ONE-POCKET TEE FOR 1¢.</p> | <p>BUY ANY TOWNCRAFT® DRESS SHIRT AT REGULAR PRICE AND GET THE SECOND ONE FOR 1¢.</p> <p>BUY ANY TOWNCRAFT® WRINKLE-FREE SHORT AT REGULAR PRICE AND GET THE SECOND ONE FOR 1¢.</p> <p><b>FOR CHILDREN</b></p> <p>BUY ANY INFANTS OR TODDLERS FLEECE JOG SET AT REGULAR PRICE AND GET THE SECOND ONE FOR 1¢.</p> <p>BUY ANY SHORT-SLEEVE RAYON SHIRT FOR BOYS AT REGULAR PRICE AND GET THE SECOND ONE FOR 1¢.</p> | <p>BUY ANY CLASSIC TRADITIONS® SMOOTH TOUCH™ COMFORTER GET THE SHAM FOR 1¢.</p> <p>BUY A FLAT AND FITTED SHEET ON SALE, AND GET THE CASES FOR 1¢.</p> <p>BUY ANY JCPenney BATH AND HAND TOWEL ON SALE, AND GET THE WASH CLOTH FOR 1¢.</p> |

Regular prices are offering prices only. Sales may or may not have been made at regular prices. Sale prices effective through Sun. Jan. 1, 1995, unless otherwise noted. Percentages of present savings on regular price or original price. Ineligible merchandise may not be taken on original priced merchandise. Restrictions on original priced merchandise effective until stock is depleted. All sales include JCPenney Smart Values. \*New prices represent savings on regular prices.

**JCPenney**  
DOING IT RIGHT™  
Hwy. 17-92, Sanford

# Editorials/Opinions

## Sanford Herald

(USPS 461-200)  
300 N. FRENCH AVE., SANFORD, FLA. 32771  
Area Code 407-322-2611 or 831-9993

Lacy K. Laar - Editor  
Odessa H. Pugh - Business Manager

### SUBSCRIPTION RATE:

3 Months ..... \$19.50  
6 Months ..... \$39.00  
1 Year ..... \$75.00

Florida Residents must pay 7% sales tax in addition to rates above.

### EDITORIAL

## A look back, a look ahead

It is difficult to avoid making predictions for this new year, especially when it comes to our county, its cities, and various commissions, boards and organizations. It is however, very tempting.

First of all, predicting the future for any of these entities would be practically impossible. Secondly, an individual government body does not, in itself, bring about drastic changes. They may try, but without the support of the people, the attempts will fail.

Thus we see that our livelihoods are not based on a single organization. Rather, decisions which affect us all are generally the result of both government and the people working together, in the same direction, to accomplish the same goal.

There may have been hopes tossed about during normal conversation, about what could happen in a new year. Some may be based on expectations, while many would be only what people would like to see happen.

Two years ago, there was a prediction that the city of Orlando would expand its northern city limits to the shore of Lake Monroe, and eliminate Sanford, Lake Mary, Longwood, and all other municipalities in this area. It was Orlando people who made the prediction, however. No one in Seminole County ever believed it could happen.

As 1995 gets underway, we may ask ourselves a number of questions. Will Lake Mary actually create and develop a historical downtown area? Will Sanford be able to actually begin work on its lakefront to attract more commercial development? Will Longwood's commission find happiness in a city staff and remove the revolving door which has been awing in and out for years?

There are others. What will happen to downtown Sanford merchants once the Seminole Towne Center mall begins operation in September? Will the Central Florida Regional Airport develop more in the field of commercial aviation, or will it lean more toward industry? Will the widening of Lake Mary Boulevard be finished?

There are people who believe they know the answers, and could make predictions for this new year. Yet most will remain silent. If what they believe does not occur, they will say nothing. If their expectations hold true, they can say, "I told you so."

All of us have ideas, hopes, and things we would like to see done to make our lives better. If the aims are good, worthwhile, and feasible, and if we all work together, the year of 1995 could go down in history as being one of our finest years.

Let's hope this comes to pass as we wish each other, Happy New Year.

### LETTER

## Watching commission

Please, Commissioner Morris, let me beg to differ with you. Criticism of Commissioner Adams' attempt to have the taxpayer buy him a personal computer was not a "cheap shot!" Diverting public funds to private use is welfare. I don't believe people making \$45,000 a year are eligible for public assistance.

The County Commission embodies legislative, executive and judicial privileges. This makes it both powerful and dangerous. It bears watching.

There is a tendency for public servants to forget who works for whom. We who don't know you well are hopeful and cautiously watching. Please don't let us down!

Thomas Carpenter  
Sanford

## Berry's World

INDIVIDUALLY  
VACUUM-PACK  
SEALED -  
WITH A  
645 GRS?



## A new year means a clean slate

It was John Locke, a 17th century English philosopher, who was credited with coining the phrase - tabula rasa - blank or clean slate. Locke was in the midst of the nature versus nurture controversy relative to what was the most potent influence on individual development. It was held that infants were miniature adults with full possession of knowledge and inherited characteristics, which would appear as they grew physically. Locke disclaimed this contention and alleged that an infant's mind was a blank slate to be filled by experiences encountered.

As we embrace the new year and thank God for life, an analogy might be drawn between Locke's clean slate concept and the belief that the new year provides each of us with a clean slate and what we write on the story of our lives will be the results of our daily decisions.

Decision making is possibly one of the most important aspects of an individual's existence. Wherever we find ourselves in life as adults, relate to a series of prior decisions made during each day of our lives.

How children are taught to make decisions should be in the best interest of society and the individual children should be taught to value life, their own and the lives of others above all else.

The gift of life cannot be replaced and should be cherished. Children need to understand how



SEMINOLE  
OPINION

LURLENE  
SWEETING

precious life is and that we have no right to inflict any type of physical distress on another human being. We must teach children to treat others as they desire to be treated.

Valuing life is multidimensional. It means not preying upon weaker community members. Included in this group are the young, the aged, the ill and the addicted. Children should not be taught to devalue life by adult words and deeds. Every adult who encourages a child to engage in criminal behavior is devaluing the life of that child.

Members of our community have the opportunity to begin 1995 with a clean slate. Train the children with whom you interact in any way to value life. Insure that elderly members of this community are respected and their lives protected. This might involve transporting them to

church, shopping, medical centers. Help those in need of medical treatment, who are not covered by insurance or a health maintenance organization to secure treatment. A contact with the hospital in your neighborhood to determine what their policies are relative to the uninsured is a first step. The second step might be raising funds for the hospital to have available to meet the needs as they arise. Persons realizing profit from drug sales must face the fact that they have totally devalued the lives of others and they have no way of knowing how pervasive the drug cycle will become and exactly who will be victimized.

Be it resolved that in 1995 each of us will be actively involved in perpetuating the valuing of life. We will utilize each opportunity presented to teach children to value life. Senior citizens will become less apprehensive because we will do all in our power to protect them from those who would make them their prey. We will recognize that the medical facility that serves us cannot bear the cost of treating the uninsured alone and we need to work with them to facilitate the provision of care for all.

The scourge of life may very well be the drug trade. Each person concerned with the drug trade is involved in the total devaluation of life. Communities need to unite with law enforcement officials and exorcise the drug dealers from their communities.



## Grateful for a lot this past year

Well, the year is over, and I suppose it is time to write one of those articles. No, not my annual list of prognostications and predictions concerning 1995. (that will come next week, sorry), nor in fact shall it be one concerning all the things I wished I had done in the previous 353 days (my space allotment simply isn't that big). What I shall write about today is sort of a thank you list to all those who have helped me get through this last year, knowingly or not; some things have been pleasant, some not; but all in all, I am about to tip my hat to everything and everyone who or which impelled or allowed me to personally grow over the preceding 12 months of my life. I owe them a substantial amount.

First, and politically expediently, I would like to thank my editors for kindly allowing me to spew forth in the various pages of their respective publications. Lacy, here at the Herald, Nance and Michael in New Jersey, and Loyd in Texas of my other outlets. The sum total of their support has permitted me to improve my craft immensely, and hopefully along the way, to even further allow me to help one or two others through the laying down in print of my words. Besides, as I've told all of them on more than one occasion, it's good therapy.

Secondly, I would like to thank my ex-wife for her, er, ah, kind suggestion that I would expand my creative horizons were we to no longer share the same address. The funny thing is, that in point of fact we both have attained heightened levels of competency as a result of the parting in our ways. I would then add the observation that much to my surprise, my children showed at least me just exactly how easy one could adjust to the unthinkable, should it actually take substance and form. Thanks kids, you taught your ol' dad a lot with your higher level of maturity.

And then there is the matter of my old real time position of employment (the one which brought me to Sanford originally), and my new vastly improved and superior form of pay check retrieval. If the former hadn't caused me to begin my residency within the confines of this fine city, I never would have found the latter. While the transitional period between the two was one which I truly would not wish to repeat, ever; nonetheless it did allow me time to review my options and skills to an extent whereby I could track my future life with some sense of desperation. Now that is true as far as it goes, but with the employment picture being what it is these days, I am truly thrilled to actually be working at a job which nearly pays all of my bills (contributions are always welcome, of course). At 41, the realization that I just might not make the New



SEMINOLE  
OPINION

DAVID  
GEOFFREY  
COE

York Times best seller list has finally sunk home, and that a job with just a tad of security (and benefits) is not the worst thing in the world to have.

Next, I would like to express my gratitude to all the friends I've made since I have started this new phase of my life, and those who remain with me from the past. They all know I'm just as nutty as a fruitcake sometimes, that my heart's usually in the right place even when appearances might sometimes be to the contrary, and yet they still put up with me for some reason or another, a matter of charity sometimes I suppose, for which I am eternally grateful. The fortunes of some of them have altered for the better or worse since we've met, but I hope they know that I will be there for them if they need me. (I'm broke guys...)

Of course, there are others in the last year to whom I owe a debt of gratitude; from the bevy of beauties (Margaret Ann, Kathleen, Sue) who have become interesting factors in my life, to the big guy upstairs who is probably getting very tired of having all my gratitude heaped upon his heavenly doorstep. And, of course, there are you folks out there, my three readers, who while you haven't exactly overwhelmed the mailroom personnel with your letters of praise, have at least had the kindness not to seek my removal from this paper's staff either. All in all, it's been a very satisfactory year for me, and in case you couldn't discern it from this article, I am grateful. Hopefully, you folks are too.

### LETTERS TO EDITOR

Letters to the editor are welcome. All letters must be signed, include the address of the writer and a daytime telephone number. Letters should be on a single subject and be as brief as possible. The letters are subject to editing.

### JOSEPH SPEAR

## We need leaders, not sweet talkers

One immutable lesson I have learned in nearly 30 years of covering public affairs is this: When the polls start talking about cutting taxes, it is time to get out the waders.

Democrats or Republicans, it makes no difference. Much of what they tell you is flirty nonsense, designed to make you feel warm and tingly inside. They're going to take care of you. They're going to trim the government, and award the proceeds to you, the great, the forgotten, the beleaguered middle class.

Bill Clinton says he is going to give us \$500 tax credits for each of our children, let us deduct college tuition costs and permit us to make tax-free withdrawals from our Individual Retirement Accounts. Newt Gingrich says he is going to give us all that PLUS capital gains tax cuts. Dick Gephardt wants to cut the taxes of every family earning less than \$75,000. Phil Gramm wants to double the personal exemptions for children.



When the polls start talking about cutting taxes, it is time to get out the waders.

They are going to get the money for all this, they say, by cutting the government. You may be wondering why, if there's this much blubber in the federal whale, it hasn't been cut out already, but let's not complicate the debate. I personally hail and would strew rose petals in the path of anyone who slashes the bureaucracy, especially the sadists at the IRS who are in charge of tightening the rules for business deductions.

Still, I am skeptical. Another immutable lesson I have learned is, there are no complimentary repeats when it comes to tax cuts. I see four ways that the middle class might suffer:

1. The tax cuts could cost us much more than we would get back from Uncle Sam. They could stimulate consumer buying, and that would stimulate inflation and that would stimulate the Federal Reserve Board to raise interest rates a few more notches. Home mortgage and auto financing costs would soar, completely offsetting the pennies we would get back in tax cuts.

2. The tax reforms enacted in 1986, designed to simplify the process, would finally be blown completely to hell by all the credits and deductions that are part of the tax cut proposals. Where are the conservatives who truly believe in the free market? Every comma in the tax laws shunts capital in one direction or another, when it ought to be flowing unhindered where it will. We built thousands of unneeded, tax break-induced office buildings and railroad cars during the 1980s, and the excess exacerbated the recession of the early 1990s. When will we ever learn not to mess with the marketplace?

3. The deficit could soar; at best, the deficit-cutting movement could stagnate. I know the polls say this is poppycock. Their tax cuts will not exceed their spending cuts, they say. But neither of the major parties in this bidding war - government activist Bill Clinton or supply-sider Newt Gingrich - care that much about deficit control. The Treasury Department and many independent economists say that, sooner or later, reduced revenues will result in greater deficits. And I say, remember 1981. The staggering deficits that resulted from the Reagan tax cuts will darken the futures of generations to come.

4. The national debt will become increasingly larger, further imperiling this nation's fundamental security. None of the politicians who are promising tax cuts are even talking about reducing the debt; at best, they promise to balance the budget and hold deficits at current levels. Thus the overall debt will continue to grow and will soon amount to a staggering \$5 trillion. It will cost \$1 billion a day to service it.

# Lake Mary

Continued from Page 1A

The sports complex off Rantoul Lane, continued to expand its facilities to allow for an ever-increasing number of sporting events, mostly for youngsters, in various sports leagues.

The building at 280 N. Country Club Road, known as Old City Hall, and the community building, finally received an official name. It became the Frank Evans Center shortly after mid-year, although it continues to be the home of many organi-

zations and citizen activities.

One of the strongest chapters in Central Florida of "Stop Turning Out Prisoners" (STOP), operates in Lake Mary. Members of the organization spent many hours, days, weeks and months seeking signatures on a petition to be forwarded to Tallahassee. When the petitions obtained state-wide were not accepted due to a need for more signatures, the Lake Mary STOP group immediately launched into another drive and continues with that aim as 1994 ends and 1995 begins.

Many city codes, ordinances and restrictions were given extensive study during the year. In many cases, long-needed revisions were proposed and enacted by the city's government. They included studies on license fees, and a re-defining of the city's alcoholic beverage licensing restrictions.

Later in 1994, the city launched into establishing what it calls the "Target Industry" plan, which is aimed at attracting major industries to certain sections of the city to help in the city's tax base and employment

opportunities, yet keep heavier traffic flows and major developments from infringing on already-established residential areas as well as those being considered.

In November, 353 acres of land on the western side of Interstate-4 were sold. Speculation has ranged from a major motion picture production facility with two large hotels and convention center, to other uses. As the year ends, what will eventually be located on that large area has not been revealed.

Shortly before the November election, Lake Mary questioned whether or not to extend the terms in office for city commissioners from two to three years. Several commissioners believed it would give them opportunities to work more closely with long-term projects, while others said they believed the citizens

should be allowed to make their decisions, and vote to retain or replace commissioners every two years.

The measure subsequently went down to defeat at the polls, and commissioners will continue serving for two years at a time before having to conduct political campaigns again.

In business, 1994 saw a massive increase in the Recoton plant, additional growth from AT&T, and a number of smaller restaurants which are now in operation.

One loss for the city was the closing of Builders Square, which should be completed within the first few weeks of 1995.

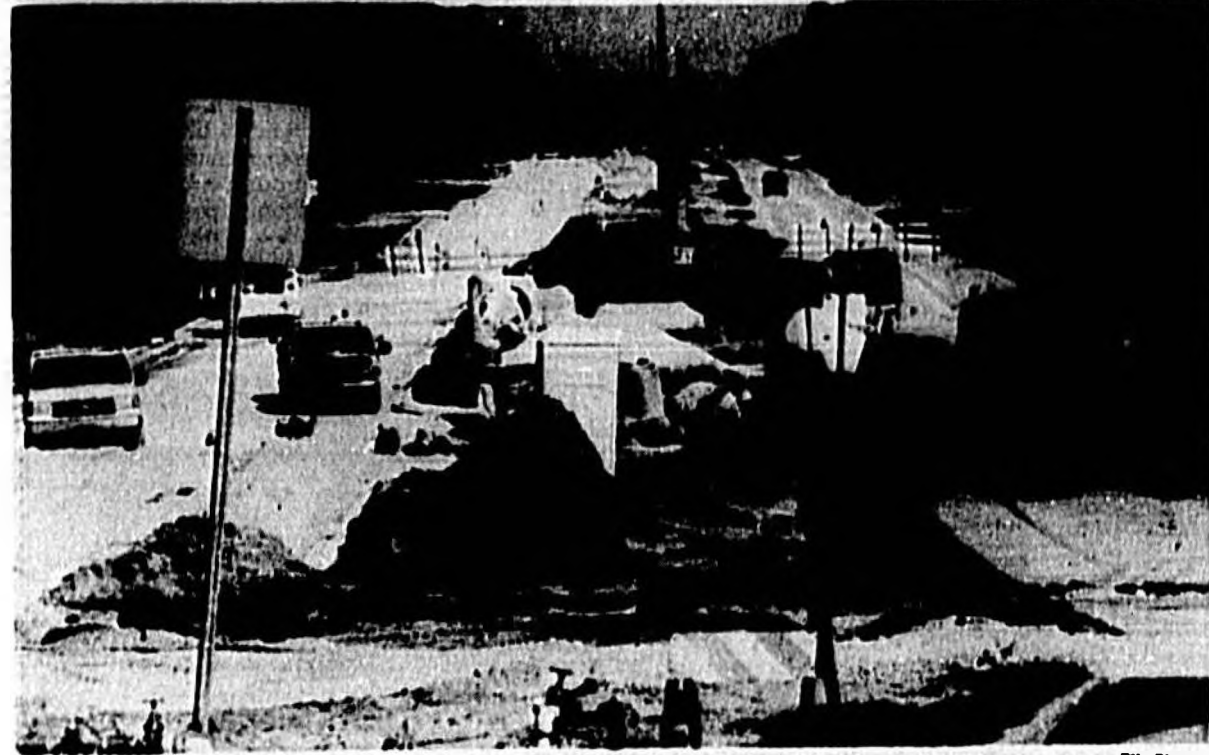
Projects prominent in 1994 and which will carry into 1995 include projected plans for the widening of Rinehart Road from Lake Mary Boulevard to County Road 46-A. The question of

assessments to pay for the paving of Sun Drive several years ago still is not resolved completely.

Although being done by Seminole County, Lake Mary continues to look forward to the completion of the widening project on Phase II of Lake Mary Boulevard, from Country Club Road in the heart of Lake Mary, easterly to U.S. Highway 17-92.

Another project for the future which only recently got underway, is consideration of possible development of a downtown historical area in Lake Mary. The area presently being discussed is within a few blocks north, but not including, the City Hall property.

The Lake Mary City Commission views 1994 as an excellent year, and looks forward to continuing many projects, with hopes for many completions during this new year.



Lake Mary Boulevard widening project continues into 1995.

# Shelter

Continued from Page 1A

"We need to have the money to operate the shelter," she said. "We believe this shelter will be used by many women and their children and we would like to have the financial resources to run it for three months before we open the doors. So, we are still seeking donations."

The location of the shelter will remain secret so that abused women and children will be able to find sanctuary from their abusers without fear of being found.

An executive director has been hired and some staff positions have been filled.

"We still need to fill several staff positions and the place does need to be furnished," Kuhn said.

They are also looking for a commercial grade exhaust hood for the stove in the kitchen of the facility as required by county code.

"That alone is going to cost \$9,500," Kuhn said. "It would be ideal if we could find a donor for that item."

She added that various county requirements which they had failed to take into account in the

budgeting process are the reason the organizers still need assistance in financing the operation of the facility.

The facility will accommodate 42 people, both women and children. Kuhn expects it will be full on a regular basis.

Still, she said, many in the community don't realize the dire need in Seminole County for the facility.

"Unless you need it," she said, "you don't realize you don't have it."

Kuhn said the facility will cost about \$300,000 per year to operate.

"If every person in Seminole County would contribute \$1 we could run the shelter without any difficulties," she said. "In

those terms, it is very little to give."

The Sheelah Ryan foundation has helped finance a large portion of the work that was done on the facility. For that and for the contributions by individuals, Kuhn said she is very grateful.

"We couldn't do this without those people," she said.

To make a contribution to the Safe House, send a donation to P.O. Box 2921, Sanford, 32772-2921.

# Schools

Continued from Page 3A

assigned in the next school year. The district's elementary and middle school students are all attending classes on the year round calendar. The change was done a few schools at a time over the last four years so families could become familiar with the system.

The transition from the traditional to year round schedule went smoothly and neither students nor parents expressed much in the way of concerns about the change during public hearings.

Meanwhile, the new juvenile

justice laws required the courts to inform schools when convicted felons are returned to the classroom.

More than 500 students were identified as such during the 1993-94 school year.

"It's time to take a look at the kids who want to learn," Wolfgang Halbig, director of security for the school district, said, "and to help rid the schools of disruptive, often violent students."

As the year wound to a close, law enforcement and the schools revealed another cooperative effort that resulted in the arrest of

27 people, including 20 students.

An undercover agent had been enrolled at Lake Howell High School for six months. In addition to being named to the honor roll, the agent purchased drugs and stolen property from a variety of students and, in one case, their parents.

"This was a very fine operation," said principal Don Smith. "I'm glad to have been a part of it."

The school district is preparing for the future with great anticipation.

"I think we are heading in the right direction," said Hagerty. "We are doing so many good things and we are looking forward to the future."

# Stinecpher

Continued from page 3A

of my parents. During their visit, my parents honored them with a bridge party at their home in Pinehurst (2006 Cedar Ave.). Winning prizes for high score were Florence McKay and R.E. Wright; low score winners were Mrs. Humer Little and Ted Runge. Miss Minnie Beck was lucky in cutting and was the recipient of a deck of cards.

Others attending were Mr. and Mrs. Herman Morris, Mrs. M.L. Gilbert, Homer Little, Mrs. R.B. Wright, Mr. and Mrs. Clarence Barcliff, Mr. and Mrs. W.S. Brumley, Mr. and Mrs. W.E. Varn, Mrs. Clara Stemper, and the Misses Anna Belle Dyson, Edna and Laura Chittenden.

**Mother's best friend**

My mother's best friend throughout her life, beginning when the Stempers moved here in 1913, was Gertrude Runge. She married M.L. Gilbert, and in the scrapbook is a birth announcement of their son, Marvin LeRoy Gilbert Jr. The date was Aug. 17, 1928 and he weighed nine pounds.

Throughout my memory, Gertrude and her son, Roy, lived with her brother, Ted Runge, at 709 Palmetto Ave. and I called them "Aunt Gertrude" and "Uncle Ted." Gertrude Gilbert was secretary to T.W. Lawton, Seminole County Superintendent of Schools, and later to R.T. Milwee

who was elected in 1952. Ted Runge was bookkeeper for Shinholer Crate Company. Roy was graduated from the University of Florida and taught school in Orlando; he later opened an insurance office there. He and his family continue to reside in Orlando.

Since I was an only child, I was fairly portable so I would go visiting with my parents quite often, and the home we were most in was that of Aunt Gertrude and Uncle Ted. I also recall many other enjoyable times we had together; one in particular was a week's stay at New Smyrna Beach when I was about 9 years old. We stayed in what was laughingly called "The Penthouse" which was the entire third floor of the apartment house located on Flagler Avenue where the Seahorse Motel is now. The building was razed in the late 1950s to make way for what was then the Ward Motel.

Mr. Ben Ward of Oviedo owned that apartment house and the one across the street; I'm sure you old-time beach goers will remember both. There was, of course, no air conditioning in the 1940s and several of the beach apartments and cottages at that time had no refrigerators. I recall the ice man bringing us ice several times during the week, lugging it up three flights of stairs.

# Courts

Continued from Page 3A

jury recommendation on his sentence. Judge C. Vernon Mize is conducting the penalty phase and will sentence Coffield in early January. Mize is retiring at the end of December but will complete the case as a senior judge.

Coffield fled Sanford after the killing. Years later a visitor identified Coffield's picture on a "Wanted" poster as a man he knew working as a farm hand in North Carolina. Coffield was returned to Florida for trial, but entered a plea instead.

Several other court cases garnered the public's attention this year.

Darrick Taylor was convicted of second degree murder for the June 1993 stabbing death of Kimberly Grace.

A new trial was granted in the case of former Sanford Police officer Guy S. Brewer, who was convicted on several counts of having sex with an underage boy.

Arthur C. Dodd, former operator of a Longwood travel agency, was placed on 10 years probation after pleading guilty to charges he secretly recorded females who thought they were applying for modeling assignments or a receptionist job.

# DEATH

**CONSTANCE LOUISE JACK**  
Constance Louise Jack, 57, Dorchester Square, Lake Mary, died Thursday, Dec. 29, 1994 at her residence. Born Aug. 5, 1937 in Hutchinson, Kansas, she moved to Central Florida in 1984. She was a licensed practical nurse. She was a member of Pinecrest Baptist Church, Sanford.

Survivors include husband, R.J.; sons, Curtis Gollehan, Sanford, Ronald James Thompson, California, James Percy Thompson, Altamonte Springs; daughters, Rita Lorraine Goldstyn, Sanford, Kathryn Louise Jack, Orlando; sister, Betty Dawson, Romana, Calif.; brother, Stephen Thornton, Mentone, Calif.; 18 grandchildren; three great-grandchildren.

Baldwin-Fairchild Oaklawn Park Cemetery and Funeral Home, Lake Mary, in charge of arrangements.



In Loving Memory of Elder Johnnie Reddick 1901 - 1994

A very special grandfather. You will always be special to us. We had your home-going services January 1, 1995. Our hearts still ache. For we know God has promised strength for us, light for the way, help from above, and undying love. Love Always, Your Grandchildren, Fannie, Harriet, Children & S.

**In Memory of**  
**JEANNE E. GILMORE**  
Sadly Mized by  
Husband Dennis  
Children Terry L.,  
Skip, Carolyn  
Becky, Jill  
and Kathy

**Legal Notice**

**ADVERTISEMENT FOR BIDS**  
Landscaping/Seeding of Right of Ways for  
Teane Center Mall  
BID 94/95-08

The City of Sanford will receive sealed bids for the Landscaping/Seeding of Right of Ways for Teane Center Mall project until 1:30 p.m. in the Purchasing Agent's office, room 341 on Wednesday, February 1, 1995 at Sanford City Hall, Sanford, Florida 32773. At 2:00 P.M. all bids will be publicly opened and read aloud in the City Commission Chambers, Room 117.

The work proposed under this contract consists of landscaping and seeding of approximately 1.4 miles of right of ways on the St. Johns Parkway, Teane Center Blvd. and North Towne Road. This will include site preparation, supplying and planting of trees, shrubs, ground cover and sod, and subsequent maintenance of these areas.

Contract Documents, including Drawings and Specifications, are on file for inspection after January 18, 1995 at:  
Sanford City Hall, Parks Department, Room 236  
226 North Park Avenue, Sanford, Florida 32773  
P. O. Design Plan Room, 408 E. South St., Suite 104, Orlando, Florida 32801  
Central Florida Builders Exchange, 248 Wymara Road Winter Park, Florida 32789-3923

Upon payment of cash, or check made payable to the City of Sanford copies of Contract Documents can be purchased for the amount of \$65.00 from the City of Sanford Parks Department after January 18, 1995 for each set of documents obtained. This fee approximates the cost of reproduction and distribution and shall not be refundable.

A certified check or bank draft, payable to the City of Sanford, negotiable U.S. Government Bonds (at par value), or a satisfactory Bid Bond executed by the Bidder and an acceptable surety firm in an amount equal to five percent (5%) of the total Bid shall be submitted with each Bid. Bid bond will be returned to all Bidders within ten (10) days after canvassing of bids, except the apparent three (3) lowest bidders.

Due to the size and scope of this contract it is MANDATORY that

*The Staff of Brisson Funeral Home would like to thank the Sanford Community for your support and help in making the U.S. Marine Corps Honor Toys For Tots program a success again this year.*

*Kathie and Mike Roynihan, two of the many who came in to drop off toys.*

**Brisson Funeral Home**  
903 Laurel Ave.  
Sanford 322-2131

**When the time comes, choose an independent funeral home,**

We care about how we serve families. The service will meet your needs, not ours. We provide the best service at the best price. We do all preparation at this facility.

**BETTE R. GRAMKOW**      **JIM SCHUITEMAN**

**GRAMKOW FUNERAL HOME**  
Independently owned and operated since 1956

5(X) E. Airport Blvd., Sanford, FL 32773  
322-3213

# School scenes

## IN BRIEF

### ESOL classes set to begin

The Winter Term for ESOL (English for Speakers of Other Languages) classes will begin on Wednesday, Jan. 4, 1995 at Seminole Community College in Sanford. The classes are offered to adults, aged 16 years and older. ESOL offers an intensive English course Monday through Friday from 8 a.m. to 4 p.m. There are a variety of levels ranging from Beginner to Advanced. It is a non-credit, free program that has an open enrollment with new students entering every day. Multi-level courses are offered in the evening at SCC from 5:30 to 8:30 p.m. Monday through Thursday. Other multi-level classes are offered at outreach centers around the county. For more information, in both English and Spanish, call 328-2120.

### OHS NJROTC seeks donations

OVIDO — The Oviedo High School Naval Junior ROTC is seeking assistance. The program, which has grown steadily over the last two years, is very involved in community projects, as well as in competitions and meets. All of that costs money. So, the group is reaching out to the community for support. Various levels of support are being offered. Corporate sponsorships are being offered at levels ranging from \$150 for a two year "bronze" sponsorship to a \$1,000 lifetime "platinum" sponsorship. Individuals can sponsor the program for \$50 and families can sponsor them for \$100.

### 4-H winners at GLMS

Talia Osteen recently won the Seminole County 4-H/Tropicana public speaking competition. Osteen is a sixth grader at Greenwood Lakes Middle School in Lake Mary. The competition is open to all sixth graders in the county. She will now go on to face the winners in 48 other Florida counties in the statewide competition. The state contest will be held next May 19 and 20 at Disney World's Contemporary Resort.

### Let us know

The Sanford Herald wants to know what is happening at your school. If you have an event coming up at your school, or if you want to tell us about some of the great things the students at your school are doing. Or, if there is a teacher, staff member or, even an administrator who has been honored or is doing something unique in the classroom let us tell our readers about it. Send the information to the Sanford Herald, 300 N. French Ave., Sanford, 32771 or fax it to us at 407-323-9408.

### POP CULTURE™ by Steve McGarry



Daughter of Naomi and sister of Wynonna, who achieved country music superstardom as The Judds, Ashley Judd was offered a significant role in the movie "Kuffs" after her first audition. She turned it down because the part called for nudity. She accepted a lesser role, going on to appear in "Star Trek: The Next Generation" and "Sisters" before landing the lead in the 1993 movie "Ruby in Paradise."

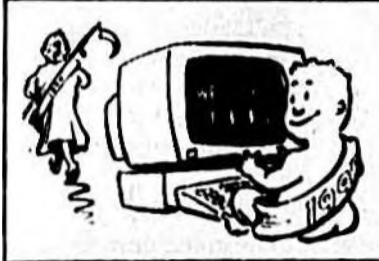
Identify the following relatives of country stars:  
a.) the younger sister of Loretta Lynn, she hit the charts with "Don't It Make My Brown Eyes Blue"  
b.) a country star in her own right, she'd been wed to Dyanne Eddy before marrying Waylon Jennings.

### Resolved:

# I'll make my resolutions...not

By VICKI DeBORNIER  
Herald Staff Writer

SANFORD — Ginny Staley, 18, says she resolves "to make the world a better place," but snickers as she says it. Marya Lipski, 13, just shakes her head. "New Years Resolutions are for old people," said Ginny. "It's all I can do to keep up with stuff I gotta do today. I don't have time to worry about tomorrow." Jake Florin, 16, said he makes resolutions throughout the year. "Whenever I see something about my self that I think needs to be made better," he said. "I resolve to make it better."



He said he believes that doing it that way ensures a higher success rate in his endeavors as he is able to concentrate on just one item at a time. "It works better than trying to cram everything into one time," he said. "If you try to change

everything at once, you don't change anything." Marci Bennett, 12, hopes to learn how to play the guitar. "I don't want to try to do something that I'll never be able to do," she said. "I want to be able to say that I done it at the end of the year."

She said she's never been successful with her resolutions. Mark Lane, 13, "doesn't believe in resolutions." He said they don't mean anything. "I see my dad making them every year," he said. "He's been quitting smoking since I was a little kid." Heather Little, 16, noted that

she has never made a resolution for New Years. "If I don't make them," she said. "I can't break them." Shalinda Davis, 14, said her mother "makes (her) make a list of resolutions every year" and tries to ensure that she follows through on the promises. "I don't see the point of it," she said. "I just think it's something to help her keep tabs on me." Felicia Levin, 16, makes her list on her own each year. "Then I put it in my purse and carry it around for a year," she admitted. "I don't know why I waste the time writing them down."

### Food labels pay off for boy

OMAHA, Neb. — A 14-year-old farm boy from Wisconsin won \$500,000 Wednesday in a drawing sponsored by health activist and multimillionaire Phil Sokolof to draw attention to the nation's new food labeling requirements. "I'm going to buy a motorcycle and go to college," said Jonathon Kleman of Stevens Point, Wis. Sokolof led the fight for passage of a tough labeling law in 1993 that requires packaged food to bear complete nutritional information.

More than 1.6 million people nationwide entered the Omaha activist's sweepstakes. They had to read a facsimile label and answer a few multiple-choice questions about nutrition. The winning entry was selected in a drawing. Four others were big winners: Lorri Lennon, 36, of Wethersfield, Conn., \$100,000; Kimberly Chard, 25, of Washington Terrace, Utah, \$75,000; Gertrude Jenkins-Newton, 70, of Newport, R.I., \$50,000; and Adam Corbett, 9, of Garland, Texas, \$25,000.

### A fad to sink your teeth into

By MICHAEL BLOOD  
Associated Press Writer

NEW YORK — Style is in the smile. Grunge music devotees go for frayed jeans and flannel. Heavy metal aficionados prefer leather and studs. For the well-appointed rap fan, the latest is worn not off the shoulder, but on the teeth. They're called fangs, rap caps or fronts. And the removable gold teeth covers — often studded with diamonds or stamped with designs — are glittering on the incisors and

biceps of image-conscious teenagers. "It's the new style coming in," said Rob Hendricks, 19, who cracked his lips to reveal a set of the caps encasing six of his upper teeth. "It's a thing now. They're real nice," said Hendricks, standing in a Brooklyn mall where costume jewelry shops prominently displayed hundreds of the decorative dental caps. While such caps have been around for years, their popularity has been boosted by rappers like the Wu-Tang Klan, who wear the ornate caps.



### Top student

The Seminole High School student of the month for November was Stephanie Smith. Smith maintains a strong GPA while playing basketball and working after school at Taco Bell. She is listed in "Who's Who Among American High School Students." Her teachers said she possesses the qualities of kindness, courtesy and respect.

### Kudos for the Kids

Also Christine Bradbury, Chalonte Peterson, Brandi Holmes, Brian Stratton, Ryan Cardell, Jerome McKinzie and Jennifer Fontana. These students were named as the November Citizens of the Month: Vickmary Rosa, James Ireland, Jaleesa Campbell, Scott Mahoney, Diara Gilley, Lea Guzman, Antoinette Robinson, Denare Smith, Ashley Dixon, Luis Vega, Kamell Matthews, Michael Trimble, Efrén Serrano and Courtney Brooks. As well as Ursula Hunter, Matt Stapp, Khoung Nguyen, Di'elle Lister, Brian Ireland, Samantha Clontz, Kyle McDermott, Scott Chapman, Nikia Holley, Amber Hawkins, Joy Ruiz, Jessica Blanton, Megan Whited, Chameka Tiger, Yuriko Sanches, Bryan Santibanes and Angela Snodgrass.

## JANUARY JUMBLE

Listed below are words associated with January. How many can you find? The words go horizontally and vertically, backwards and forwards. Good luck!

S S B C O B O L Y T R A P  
P N E A B E S R E H T A F  
O O G L R L L A B T O O F  
O W I E L C Y S C O V E A  
N E N N T H A J K A U R T  
O U N D R R D T Y S J F H  
I Q I A A E Y E R T H U E  
T E N R E Y P D E A L F R  
U B G A Y P P S T T B E T  
L R M A W R A E N I A G I  
O A N I E T H G I N D I M  
S K I N G G W N K U E  
E R F O L U J L H H J N I  
R P O R T F E S T I V E P

NEW YEAR RESOLUTION PARTY

WINTER FOOTBALL FESTIVE

CALENDAR SNOW TOAST

FATHER TIME SKING

HAPPY BEGINNING

MIDNIGHT

### Seminole County School Board

#### What's for lunch?

|  |  |
|--|--|
| <p><b>Monday, Jan. 2, 1994</b><br/>One day of vacation left</p> <p><b>Tuesday, Jan. 3, 1994</b><br/>Pizza<br/>Corn<br/>Fresh Fruit Selection<br/>Milk<br/>or Chef's Salad or Bag Lunch<br/>Low Fat Milk</p> <p><b>Wednesday, Jan. 4, 1994</b><br/>Baked Pork Chulet and Gravy<br/>Mashed Potatoes<br/>Roll<br/>Green Beans<br/>or Chef's Salad or Bag Lunch<br/>Low Fat Milk</p> <p><b>Thursday, Jan. 5, 1994</b><br/>Rottini and Italian Meatsauce<br/>Tossed Salad<br/>Garlic Roll<br/>Citrus Tray<br/>or Chef's Salad or Bag Lunch<br/>Low Fat Milk</p> <p><b>Friday, Jan. 6, 1994</b><br/>Cheeseburger<br/>Oven Fries<br/>Lettuce, Tomato and Pickle<br/>or Chef's Salad or Bag Lunch<br/>Low Fat Milk</p> |  |
|--|--|

## Seen at school...

### Freedom to write

The Sanford Optimist Club recently held an essay contest for high school students. The topic was "Freedom, Our Most Precious Heritage." The Seminole High winners were recently presented their awards by Audrey Ogden (center), secretary/treasurer of the Sanford Optimist Club. The students, left to right, are Taherah Lawrence (second place), Jennifer Zelenak (first place) and Stephen Speery (third place). Zelenak's work will be entered in the district competition where she becomes eligible to win \$5,000 in scholarship money.



# Health/Fitness

## IN BRIEF

### Resolve to donate, save a life

Want to kick off 1995 differently and actually stick to one of your New Year's resolutions without the burden of counting calories, numbers-crunching or touching your toes? Join the National Kidney Foundation's New Year's Resolution Campaign and sign up to save a life.

Close to 40,000 American, including 1,000 Floridians, are currently awaiting a life-saving organ (heart, lung, kidney, liver, pancreas or bone marrow) transplant, and seven to eight people die each day while awaiting a transplant. To help ease the plight of organ donation here in the United States, the National Kidney Foundation is urging all Americans to sign Uniform Donor cards and to discuss that choice with their family members.

Donation cards are supplied free of charge. The work of the foundation is funded entirely by the public. To make a year-end, tax deductible donation or to receive a donor card, or more information on organ donation, call 1-800-927-9659 or write the National Kidney Foundation of Florida at 1040 Woodcock Rd., Suite 119, Orlando, FL 32803.

### CFRH offers low-cost cardiac screenings

SANFORD — Central Florida Regional Hospital will offer Cardiac Risk Profile Screenings, the first Friday of the month, beginning, Friday, Jan. 6, 1995.

The screening will be available from 8-10 a.m. in the hospital's classroom and includes tests for cardiac risk factor, cholesterol, triglycerides, HDL (high density lipids), and LDL (low density lipids). This is a fasting test, so participants should not eat or drink for 12 hours prior to the test.

The low cost screening is \$13; \$14 with a glucose screening. Members of the hospital's Senior Friends program will get a discount on these prices: \$10 and \$11 respectively. Free blood pressure screenings will be offered at this time.

Experts say the cardiac risk profile screening is the best way to predict the risk of heart disease. The ratio derived from comparing results of a person's HDL and LDL cholesterol tells much more about their risk for heart disease than total cholesterol alone.

This screening is co-sponsored by the CFRH Auxiliary and the Senior Friends program.

For more information, call Ellen Rollins, Senior Friends coordinator, at 321-4500, extension 5764.

## Ronald McDonald House of Orlando New 'home' will benefit children both near, far

By SHARI BRODIE  
Herald Staff Writer

ORLANDO — When a child is hospitalized, every moment of the day can seem critical to the parents. As much time as possible is spent at the bedside, or in close proximity, of the child. When the day ends, so does the accessibility to some units in the hospital. While some parents can spend the night in cramped sleeper chairs in the patient's room, or in waiting rooms, others have nowhere to go, or are reluctant to even travel to their nearby homes.

That is why Ronald McDonald House was created, to provide a "home-away-from-home," someplace for parents of sick children to go to at the end of the day, or escape to when there is nowhere else to go.

A groundbreaking ceremony was held for the Ronald McDonald House of Orlando recently and work is expected to be completed in the summer of 1995. Located on the corner of Princeton Avenue and Bedford Road, on land donated by Florida Hospital, the house will primarily serve the pediatric oncology program at the Walt Disney Memorial Cancer Institute, the Florida Hospital neonatal and pediatric intensive care and progressive care units, but is open to all families of children seeking treatment at Orlando hospitals.

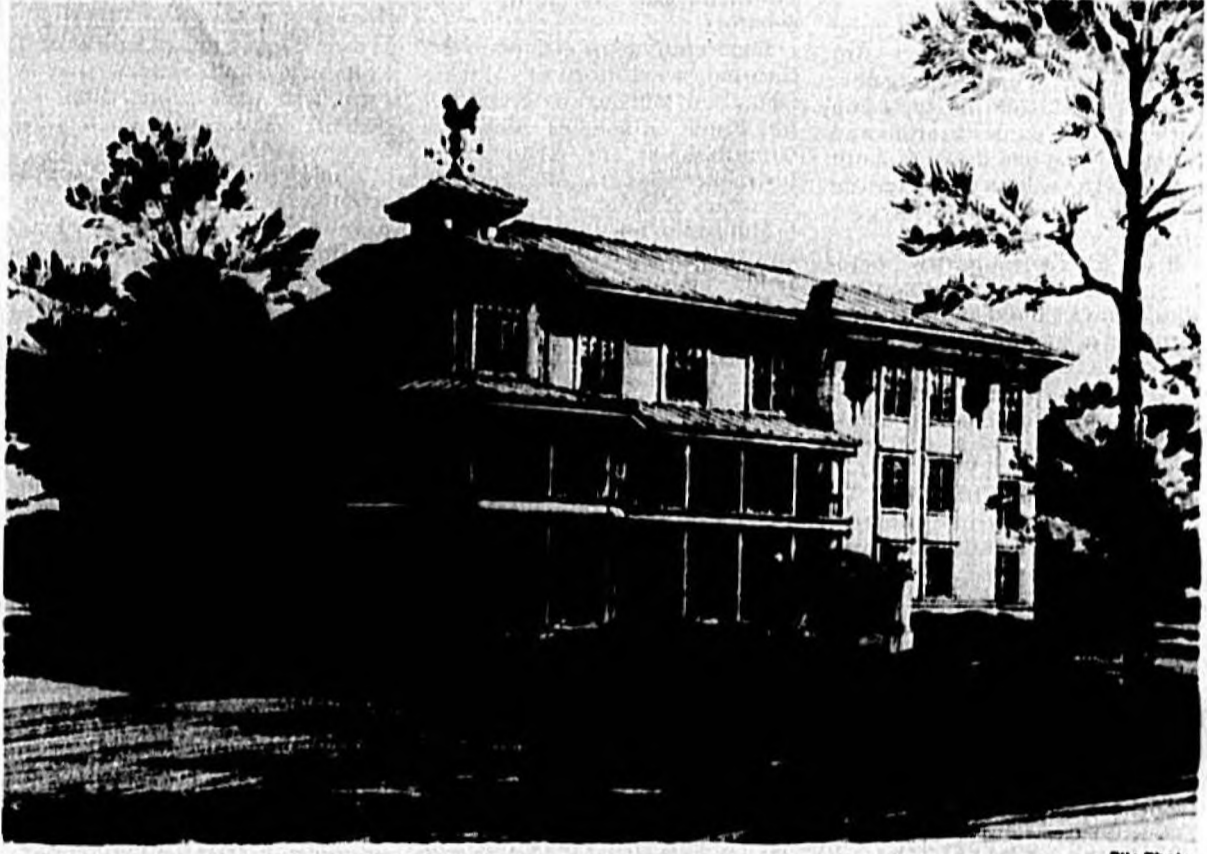
The first Ronald McDonald House was established in 1974, in Philadelphia. There are currently 140 houses, eight of which are in Florida. The oldest of these is in Gainesville. That house was built in 1982 and has served 1,716 central Florida families, from Orange, Seminole, Osceola, and Brevard counties, who have been referred to Shands Teaching Hospital for treatment. The 28-room facility is full 95 percent of the time, said Angela Morgan of the Gainesville house.

With the addition of more pediatric services at Florida Hospital, and the opening of Arnold Palmer Hospital for Children & Women, a similar need was seen in this area. Hubbard House, affiliated with the Orlando Regional Healthcare System, opened in December of 1993. The 20-room facility is located on the corner of Miller Street and Kuhl Avenue.

"The presence of this facility adjacent to ORHS hospitals gives people the chance to concentrate on the healing process of their family member without the additional stresses of finding suitable, reasonable accommodations," said Martha Johnson of ORHS.

At the groundbreaking ceremony, Winter Springs resident Margo Orf spoke of what Ronald McDonald House has meant to her family. Orf's son, Stephen, was born with severe combined immunodeficiency, a genetically inherited disease, where the body fails to develop an immune system; no tonsils, no thymus gland, no functioning white blood cells. As Stephen was treated with chemotherapy, at All Children's Hospital, in preparation for a bone marrow transplant, the Orf family spent several months in St. Petersburg.

"We knew no one," Orf said in her speech. "We were scared, tired and depressed. After getting Stephen settled at the hospital, we went over to Ronald



The house will have clapboard siding and a veranda around the entire exterior.

McDonald House."

"The interior of the house alone was welcoming and homey," Orf said. "It was a real reprieve from the hospital's sterility and institutionalism." Orf's two daughters made friends with children of the house manager and other families staying at the house. As do many other former residents, "we still go back to visit now and again."

Stephen will turn seven this month. The transplant was successful and Orf said he is "a true hero, and a fighter, a real ball of energy."

For many local residents, being treated close to home, affordable accommodations can still be an issue. Dr. Clifford Selaky, director of pediatric oncology/hematology, Walt Disney Memorial Cancer Institute and a board member of Ronald McDonald House, recalls the family of one his patients who slept in their truck rather than give up precious time driving back and forth to Geneva.

Selaky knows the value of the service provided by the house and its managers. He was a volunteer weekend manager at a house in New Hampshire when he was a resident at Yale, in New Haven, Conn.

"It was great," Selaky said. "It gave me a chance to be supportive outside of the role I normally play."

The Orlando house was designed by the Orlando architectural firm of SchenkelShultz, as a "Florida Cracker style residence to draw upon the neighborhood's past while lending a feel of a bed and breakfast atmosphere." There are to be nine bedrooms, four day rooms and a kitchen, a game room and an indoor/outdoor play area. The cost of a night's stay will be \$50 for families who can afford it.

A capital campaign to raise the \$2.5 million needed to build the house is currently underway. Major contributors to the campaign thus far have been Sprint/United Telephone, the Chetler Foundation, Barnett Bank and AT&T. A "seed" grant of \$25,000 came from Ronald McDonald Children's Charities (RMCC), based in Oakbrook, Ill., and additional funding will come from local McDonald's



Margo and Stephen Orf

Herald Photo by Tommy Vincent

owner/operators and RMCC of Central Florida. Many local businesses, such as Universal Studios and Dillard's, have also sponsored promotions to raise money for RMCC, that will benefit the local house. Companies, individuals and foundations can also underwrite a room or an area in the house.

The house will be operated by Children's House of Central Florida, Inc., a volunteer board of directors. A house manager will assist residents and oversee day-to-day operations.

"I am proud to be able to give a small part back by being on the building committee of this new Ronald McDonald House," Margo Orf told those attending the groundbreaking ceremony. "I pray others will find comfort and solace under its roof."

Editors note: Shari Brodie's daughter, Megan, was diagnosed with a congenital heart defect at one month of age. She was eventually treated at Shands Teaching Hospital and Brodie spent nearly a month at Ronald McDonald House in Gainesville.



Muriel Schlegel with friend, Paxton.

Herald Photo by Renee Keith

## Parkinson's sufferer 'accepts and adjusts'

By RENEE KEITH  
Herald Correspondent

The first symptoms of Parkinson's disease may not appear to be symptoms at all. Diminished blinking, reduced spontaneity of facial expressions, stiff posture, loss of ease in changing positions, such as attempting to sit or stand and a tendency to remain in a single position for unusually long periods of time seemed to Muriel Schlegel as part of the aging process. These symptoms, for the most part were her's.

"As with many things that take on changes in one's life," Schlegel said, "a person just learns to accept and adjust. This is exactly what I have had to do with effects that I now experience due to Parkinson's disease."

Parkinson's disease, or Parkinsonism, usually begins between 50 and 65 years of age. According to the American Parkinson Disease Association, the disabling symptoms include muscular rigidity, slowness and poverty of movements, and tremors. This group of symptoms had another name, shaking palsy, long before it was scientifically described nearly a century and a half ago by an English physician, James Parkinson.

The disease results from a deficiency of dopamine, a chemical that is important in the transmission of nerve impulses in the basal ganglia of the brain. The basal ganglia are situated deep in the cerebral hemispheres and are important in regulation of smooth, rapid movements of the limbs and body. In the basal ganglia, there is

normally a chemical balance between dopamine and acetylcholine, another neurotransmitter that participates in the process of relaying messages from one nerve cell to another.

With dopamine deficiency, as in Parkinson's disease, this balance is disturbed and there is a relative preponderance of acetylcholine activity. The main goal of treatment is to restore the chemical balance between the two neurotransmitters. Most patients are now given L-dopa (Sinemet), a compound that the body converts into dopamine, or other drugs that stimulate the action of dopamine. Either alone, or in combination with L-dopa, other agents may be used to counter the relative excess of acetylcholine. The most common of these are trihexyphenidyl (Artane) and benztropine mesylate (Cogentin).

Despite treatment, the disease is slowly progressive; the severity of symptoms at any time is directly related to the degree of dopamine deficiency. Nonetheless, dopamine replacement therapy has substantially improved the functional capacity and survival time of patients with this disorder. At this time, the association said, L-dopa is the most effective control for the symptoms of Parkinson's disease.

Schlegel has not allowed this disease to stop her from enjoying the many pleasures of everyday life, such as her dog, Paxton. She simply has had to make a few minor adjustments.

### Blood bank seeks 2,000 donors

The Central Florida Blood Bank is asking area residents to give the gift of life during the blood bank's annual Great Gift Exchange by donating blood to help with holiday emergencies that are typical during this slow donation period.

The event will take place Wednesday and Thursday, Jan. 4 and 5. Donors may make their donations at any of the branch locations from 9 a.m. to 7 p.m. Donating blood is a safe and easy procedure that only takes about 30 to 45 minutes. Donor must weigh a minimum of 100 pounds, be at least 17 years old and be in good health.

This year, the Great Gift Exchange goal is 2,000 units of blood. Various gifts will be available for those who donate at any location.

For more information or to locate the branch nearest you, please call Central Florida Blood Bank at 1-800-852-0346.

### CFRH benefits Rescue Outreach

In the spirit of Christmas, Central Florida Regional Hospital associates and patients joined together and donated various items to the Rescue Outreach Mission located at 1701 W. 13th St. in Sanford.

The Cardiopulmonary Rehabilitation staff and patients donated numerous boxes of canned goods for the mission to use in its daily operations. This department as well as the Business Office, Health Information Management and the Pharmacy collected gifts, clothing and toys for specific families in need.

"The donations collected by the hospital played a big part in our ability to help others. We had requests from other agencies and we were able to fulfill those requests," said Blanche Bell Weaver, founder and executive director of the mission.

## A New Breakthrough In Hernia Repair

Hernia repair is no longer major surgery. Recent advances like the mesh technique have made it as simple as a one-day "walk-in, walk-out" procedure.

A new laparoscopic technique now available at The Hernia Center of Central Florida has simplified things even further. Because this procedure requires only small incisions, it lessens pain and further shortens recovery time.

The Hernia Center is operated by Surgical Associates, an established team of skilled surgeons who have practiced in Central Florida since 1973 and have performed literally thousands of hernia operations.

If you're suffering from a new or recurrent hernia, we can help. For an appointment, call

(407) 647-2727

Treatment You Can Trust

Three convenient locations: Winter Park, Maitland and Orlando

**EYE EXAM \$29**

**50% OFF FRAMES**

**MEDICAID ACCEPTED**

**THE EYES HAVE IT OPTICAL**

3625 Lake Emma Road  
Lake Mary • 32740  
Lake Mary Centre (Behind Burger King)

# In 1994, Republican surge couldn't oust Lawton Chiles

By **BRYN KALLISTAD**  
Associated Press Writer

**TALLAHASSEE** — Lawton Chiles can still be found in the governor's mansion, but most of 1994's political Rolodex is obsolete.

Among the missing: longtime politico Gerald Lewis, Jim Smith and Tom Gallagher. Lewis overstayd his welcome with voters while Smith and Gallagher reached too high, both losing in the primary race for the Republican nomination for governor.

If not for Chiles' narrow victory in his re-election bid, 1994 would have ended more than a century of political dominance by Florida Democrats.

"It would've been a long, hard journey over the next decade if he had not won," said former state Democratic Party Chairman Charles Whitehead, a longtime Chiles' supporter. "With Lawton winning, it gave us a second chance."

Without an incumbent running for re-election, Republicans won three of six Cabinet seats and knocked out Democratic incumbents Lewis and Doug

Jamerson, who was appointed education commissioner just 10 months earlier by Chiles.

The GOP took control of the state Senate, nearly won the Florida House and expanded its impressive hold in Congress to a 16-9 margin, including U.S. senators.

The Republicans elected to the Cabinet were former Marine Gen. Bob Milligan as comptroller, Frank Brogan as education commissioner and former state lawmaker Sandra Mortham as secretary of state. Milligan's low-budget, stealth campaign ousted Lewis, who held the job for 20 years.

After a victory of less than 1.5 percentage points over Republican challenger Jeb Bush in the closest governor's race in the state's history, Chiles must now do business with Republicans.

"I really think our system works better when somebody's in control," said Chiles, who has spent the past two years trying to work with a Senate divided equally between the two parties. "Nothing could be worse than 20-20 was."

While Chiles kept alive his unbeaten streak over a 35-year

political career, Connie Mack of Cape Coral became the first Republican in Florida history to win re-election to the U.S. Senate.

Mack won over 70 percent of the vote to crush President Clinton's brother-in-law, Hugh Rodham. It was the first time since Democrat Spessard Holland's 1958 victory that a candidate took more than 70 percent of the vote in a U.S. Senate race in Florida.

Mack and Florida's senior senator, Democrat Bob Graham, have enjoyed a close working relationship in Washington and both enjoy widespread popularity with voters.

And now, acerbic state Republican Party Chairman Tom Slade thinks Chiles may enjoy an improved second term with more Republicans on hand.

"He has in the Republican Party some people who really want to reinvent government," said Slade.

"I watched Bob Martinez swing in the wind with no allies," recalled Slade. "The governor without help in the Cabinet or the Legislature is politically impotent."

"To be effective in making a major contribution to Florida's future, Democrats and Republicans must work together," said Slade. "We cannot be eternally at odds with one another and be as effective as we have an opportunity to be."

Chiles, who turns 66 in April, doesn't have to worry about any more elections. He doesn't want his final four years to be the most difficult of the 40 he'll spend in public life.

"He understands the key word in a political office is 'compromise' and that sometimes you have to compromise," said Whitehead. "He's experienced and he's tough. I'd rather have Lawton there in these precarious times than anybody else I know."

Chiles was intent on changing Florida's tax base, but he didn't have enough political support in his first term to tackle the issue when his own party was better entrenched.

The governor, who will celebrate his last political victory with a festive Jan. 3 inauguration day, is looking for firms ground before pushing for tax restructuring.

"We're trying to determine what is the best way to move on that," he said in a year-end interview.

He indicated he may push for a referendum similar to former Gov. Reubin Askew's successful drive for a corporate tax in the early 1970s.


Chiles said he'd need support from business groups and the state Chamber of Commerce before he'd try to get any tax proposals on the ballot by 1996.

"We want to see if they're willing to participate with us," he said.

Chiles will need the support of the other three Democrats on the Cabinet, including Bill Nelson, who has resurrected his gubernatorial ambitions for 1996 with his victory in the insurance commissioner's race. Nelson felt betrayed four years

ago when his first gubernatorial bid was scuttled by Chiles' late entry into the race.

**How would I like to you about our Low Prices & Pennywise?**



**BELOW LOW PRICING PENNYWISE CORP.**  
Retail / Wholesale  
17-22 & 27th St.  
2701 S. Orlando Dr., Sanford • 322-6861

**LIQUIDATION SALE EVERYTHING 50% OFF**

## Sanford

Continued from Page 1A

Another loss was that of the RiverShip Grand Romance. The ship was sold in mid-year, to be converted into a river gambling ship which will be traveling on the Mississippi River.

The regular dinner cruises, however, have been continued by its sister ship, the Romance. While plans were announced regarding the possibility of having a replacement ship, possibly larger, construction is temporarily on hold.

Regarding the mall, southeast of the Interstate 4/State Road 46 interchange, this coming year will see all of the work and planning for the Towne Center coming to fruition. Originally scheduled for grand opening on Sept. 7 of 1995, the date is now expected to be possibly a week or so later.

Billie Scott, a spokesperson for Simon and Associates, developers of the mall, are building a similar mall next to its corporate offices in Indiana, and she said the grand opening for that one has now been scheduled for the Sept. 7 date. "I expect the Sanford opening will be only a short time after that," she said.

Plans have already been through the city planning and zoning commission for the major tenants of J.C. Penney, Sears, Burdines, Dillard's and Parisian. Construction, which got underway in June, is in full swing.

The Central Florida Regional Airport also had a major project during 1994. The new international arrivals terminal building, started in April, is now com-

pleted with only minor finishing touches needed.

Recreation, competition and entertainment also was prominent in Sanford during 1994. A number of annual events continued to draw visitors including the Naval Air Station reunion held by the Fleet Reserve Association in June; the city recreation department's Soap Box Derby event in July, with a pre-race event earlier in the year as well as the one scheduled for this weekend; world class powerboat races along the shore of Lake Monroe in October as well as the air show at the Central Florida Regional Airport that same month.

Those events, along with holiday activities such as the Veterans Day parade, Chamber of Commerce arts and crafts show, and others also were well received.

Also well received was this month's Christmas parade in downtown Sanford. Many felt it was one of the finest of its type in Sanford in many years.

The biggest annual event each year, during early November, is the Golden Age Games, sponsored by the city of Sanford, senior center, and many individual organizations and clubs which act as co-sponsors for individual events.

One regular activity was not held in 1994. The people's fireworks display for the Fourth of July could not take place. The organizer of the event bowed out, saying that he was unable to do it alone, and had not been able to obtain needed support.

After a show of disappoint-

ment by a number of citizens, SHDWA, in August, approved plans to take over the entire July Fourth project for 1995. Plans now include many additional events such as an old-style city picnic, and other activities.

The movie-making industry continued to make its presence known in Sanford, with portions of several motion picture and TV programs filmed using locations in the Sanford area.

1994 was not without its share of sadness and problems. The historic Montezuma Hotel at 300 S. Magnolia Ave. was destroyed by fire in October. By the end of the year, removal of the remains was still underway.

With Tropical Storm Gordon supplying such heavy rainfall in June, and the extraordinary amount of rains since that time, a considerable amount of flooding has occurred. The shore of Lake Monroe came to within inches of the top of the seawall, and the city commission had already discussed plans on how to handle the waters if they overflowed. It was in early December before the water level began to go back down, but by the middle of the month, more rains had occurred.

Along the waterfront, Sanford also lost a prominent name from a sign board. The Holiday Inn, on Harbour Isle Marina, lost its flag through some legal and financial difficulties. It is still in operation, however, but has been renamed the Marina Hotel.

Late in the year, the city fire department learned the whereabouts of an old fire truck

which was originally delivered to Sanford in 1921. Following an extensive private fund-raising drive, the truck was purchased in mid-November, and, although not in full operating condition, was able to participate in the Christmas parade.

Although commissioners tackled a number of problems during the course of the year, one of the big moves came earlier this month, when a charter advisory committee was formally established. The committee is expected to spend most of the new year examining the city charter, and making suggestions to the commission on how the various sections of the document might be improved for the benefit of all citizens as well as the operation of the city.

The City Commission itself remained unchanged in 1994, but as a result of the December election, there will be a change as of Jan. 3. Kerry Lyons, a political newcomer, defeated longtime incumbent commissioner, A.A. McClanahan, by a narrow seven votes in a district-only election.

Commissioner Whitley Eckstein, also up for re-election, had no opponent, and will be sworn in to continue his position, also at the Jan. 3 special commission meeting.

While 1994 saw the beginning of what many officials, business leaders and citizens believe may be a resurgence in the city, 1995 appears as though it may be even better.



Touchton's Drug Store, one of Sanford's long-time stores was one of the businesses lost in the historic downtown Sanford area during 1994. The downtown area however, did see an influx of

many antique and collectible stores, as the Sanford Main Street program continued to promote business development.

## Longwood

Continued from Page 1A

torium on any new adult businesses opening in the city while the ordinance was considered. Three body scrub parlors opening in Longwood prompted the commission to consider rules regulating adult businesses. Work is still being done on the proposal and the moratorium may be extended for a short time. The city had few provisions on the books to regulate adult businesses except through occupational licenses.

Several meetings to discuss Rangeline Road were conducted with residents along the heavily traveled corridor connecting Longwood Hill/E.E. Williamson roads to State Road 434 using

their pleas for measures to reduce the traffic. Seminole County is providing \$800,000 for the project raised by the one-cent gas tax earmarked for road programs.

The commission approved a stop sign, and two speed humps on Rangeline Road which slightly reduced the traffic count. Design plans call for some turn lanes and grass medians. Most of the residents are against anything which encourage more traffic, especially any widening of the road.

An effort will be made to change the city's own comprehensive plan which calls for the road to be widened. Any change would have to be approved by

the state department of transportation. County plans also project Rangeline to be widened along with Lake Emma Road to handle future traffic volume.

One land planner speculated privately that if the city attempts to make the road too inhospitable with more speed humps and stop signs, the DOT might declare it an unsafe road and seek control.

The city bought a former medical office across the street from the downtown fire station to help relieve overcrowding. City buildings in the historic district were also hooked into the sewer system after relying on septic systems for years.

Honest, Dependable, Guaranteed and Dedicated Service with a Personal Concern for Your Repair Needs.

**Harrell & Beverly Transmissions**

Repairing and Rebuilding Automatic Transmissions  
205 W. 25th St., Sanford 322-8415  
24 Years... Same Location

**PICTURE YOUR SWEETHEART**  
VALENTINE'S DAY PORTRAIT SPECIAL



**64 PORTRAITS ONLY \$3.95**  
One 8x10, two 5x7, 10 Wallet Size, 24 Mini-Portraits

Being less than \$3.95 per person, payable to the photographer, not included in advertised price. Prices for advertised portraits are subject to change without notice. Live one special package per subject. Up to the additional points taken for special portrait collection with no obligation to purchase. All ages welcome (under age 18 must be accompanied by a parent). Overall limited to six or less. Sorry, no cash. Portrait size approx. 4x6.

Thursday thru Monday, Jan. 5-9  
Daily 10:00 AM - 7:00 PM • Sunday 12:00 - 6:00 PM

**WAL-MART** 3883 Orlando Drive  
PORTRAIT STUDIO Sanford, FL 32771

**COMPUTER CENTER OF SANFORD**

500 WEST 1<sup>ST</sup> ST. SUITE B SANFORD, FL

CALL: 322-6340 (SALES) 336-3340 (SUPPORT)

HOURS: M-F 9-6, SAT 9-6

**TRANSPORTATION SPECIAL**

We'll advertise your car or other motor vehicle until it's sold.  
(Non-Commercial • No Dealers)

- ▲ You pay for the first 10 days and if your car doesn't sell **Call Us** and renew it for **FREE**.
- ▲ Phone number and asking price must be included in ad.
- ▲ One Vehicle Per Ad.
- ▲ Only price may be changed.

*Information the buyer wants to know!*

- ▲ Make and Model
- ▲ Year
- ▲ Power Features
- ▲ Mechanical Condition
- ▲ Body and Finish
- ▲ Transmission
- ▲ Mileage
- ▲ Previous Use
- ▲ Accessories/Interior

Call **322-2611** today!  
**Sanford Herald Classifieds**  
300 N. FRENCH AVE., SANFORD • 322-2611



# Sports

# B

## IN BRIEF

### LOCALLY

#### Sanford softball registration

SANFORD — Softball teams wishing to participate in the Sanford Recreation Department adult polar bear softball leagues have one week remaining to register. Leagues, which are scheduled to begin play the week of Jan. 9, will be filled on a first-come, first-serve basis. The entry fee is \$265 (including the \$15 1995 ASA registration fee). For details, call 330-5697.

#### Altamonte Springs Babe Ruth

ALTAMONTE SPRINGS — Spring will be here before you know it. Come join the fun in our new Babe Ruth Baseball program at Eastmonte Park. The park is located off S.R. 436, turning south on 427 in Altamonte Springs. Signups are Saturday, Jan. 7 from 9 a.m. to 3 p.m. at the Eastmonte Park Civic Center. You must be between the ages of five (before August 1, 1995) and 18 (on August 1, 1995) and a birth certificate must be presented. Cost is \$50 per child (\$60 for non-Altamonte residents), which covers uniform shirt, hat, socks, picture package and league insurance. Tryouts will be Jan. 14 for ages 9-13 from 9 a.m. to 2 p.m. and Jan. 28 for ages 14-18 from 9 a.m. to noon. Eight-year-olds do not have to try out. Opening day will be on March 4. For more information call the Altamonte Springs Babe Ruth Message Line at 283-7910.

#### Adult flag football at YMCA

LAKE MARY — The Seminole Family YMCA is in the process of forming an adult flag football league that will play its games on Saturdays at Winter Springs' Central Winds Park. Registration is being taken through Monday, Jan. 16, at the YMCA, located on Longwood-Lake Mary Road. League fees are \$325 a team, which must have a minimum of seven players on the roster and a maximum of 14. Call 321-8944 for details.

#### Sanford offers 3-on-3 hoops

SANFORD — A 3-on-3 basketball league for adults is being planned by the Sanford Recreation Department. The league, which will begin the week of Jan. 17, will play its games at the Sanford Middle School Gymnasium. Registration fee is \$75 per team. For information, call 330-5697.

#### Lake Mary polar softball

LAKE MARY — The City of Lake Mary will be conducting a Polar Bear Softball season at the Lake Mary Sports Complex. The 10-week leagues will begin the week of Jan. 23. Registration will be taken at City Hall, Monday through Friday, from 8 a.m. to 5 p.m. Packets can be picked up at City Hall. Men's C League are scheduled for Tuesday, Thursday and Friday nights and a Women's C League is planned for Wednesday's. Cost is \$280 per team, plus a \$12 A.S.A. fee and \$5 per non-resident player. There will be a mandatory coaches meeting at 6:30 p.m., Jan. 17, at the Community Center.

#### Seminole Softball registration

FIVE POINTS — Registration for the 1995 spring season of Seminole Softball's girls' slow and fast pitch softball teams begins Saturday, Jan. 14 and run through Sunday, Jan. 22, 1995. Registration will be at Seminole Softball's Five Points Club House on S.R. 419 between R. 434 and Rt. 17-92 from 9 a.m. to 3 p.m. on Saturday, Jan. 14 and 21, from 1 p.m. to 4 p.m. on Sunday, Jan. 15 and 22, and from 6 p.m. to 8 p.m. Monday through Friday, Jan. 16-20. The first game will be on Feb. 11 and the last game will be on April 22, with the playoffs being held the week-end of April 29 and 30. Seminole Softball is an all girls organization and will offer play for the following age groups: Sparrows, ages 6-8, slow pitch (fee \$35); Starlings, ages 10-and-Under, slow pitch (fee \$40); Hawks, ages 12-and-Under, slow pitch (fee \$40); and Eagles, ages 14-and-Under (fee \$50). All girls who register will make a team. For more information, call 321-4085 during registration hours or call Herman at 365-9236 or Randy at 332-8565.

#### Golf privilege card

ORLANDO — The American Lung Association's 1995 Golf Privilege Card is now available. The card entitles golfers to free or reduced greens fees at 50 Central Florida courses as well as courses throughout Florida, Alabama, Georgia, and Mississippi. Money raised from the sales of the card is used locally to support the Lung Association's educational and health programs. For more information or to order your Lung Card, call the American Lung Association at 888-3401 or 1-800-LUNG-USA (5864-872).

**BEST BETS ON TV**

**COLLEGE FOOTBALL**  
 8 p.m. — WESH 2, Orange Bowl: Nebraska vs. Miami. (L.)

Complete Listings on Page 2B

# 1994: A happenin' year



Lyman High School sophomore Rob Evans ran to the Class 6A cross country state championship.



After being released by the New York Jets in August, Jeff Blake was signed by the Cincinnati Bengals. Forced into the starter's role because of injuries, Blake led the Bengals to three wins and nearly upset the Dallas Cowboys.

## Eclipsed calender was filled with thrills

By TONY BACORNER  
 Herald Sports Editor

Now what? That sums up the 1994 athletic year in Seminole County, a year where changes, challenges, and championships occurred with head-spinning frequency. If you missed the last one, the next one was just around the corner. In no particular order, here are 10 topics that captured the attention of county sports fans.

**Gender equity**  
 New state legislature mandated that public schools offer athletic programs of equal quality for both sexes and in proportion to each individual school's enrollment. In Seminole County, schools switched to fastpitch softball and added freshman teams in girls' volleyball and soccer.

**Jeff Blake**  
 Released by the New York Jets in August, Blake was signed by the Cincinnati Bengals. Starting his first NFL game against the Dallas Cowboys because of injuries to the Bengals' other quarterbacks, Blake nearly led Cincinnati to a stunning upset. In the second half of the season, the Bengals win three games behind Blake, who is voted into the Seminole County Sports Hall of Fame.

**State champions**  
 They did it again. The Lyman Grayhounds won their third girls' soccer state title in four years while the Seminole Fighting Seminoles claimed their fifth girls' track state championship.

**Individual champions**  
 Oviedo's Brian Black completed an undefeated wrestling campaign by winning the state championship in the 220-pound weight class. Individual state tennis titles were claimed by Oviedo's Tracy Kotsosa and Lake Mary's Vilmar Silva and Derek Pope.

**Anna Pohira** of Lake Howell defended her state crown in golf. At the Class 4A state track meet, the Seminole girls' 4 x 400-meter relay set a state meet record. Mindee Hampton won the 200-meter dash while Belinder Morgan was first in the triple jump. Andre Scott was the state champion in the triple and long jumps. Bernard Sparrow took the state crown in the shot put. Lyman's Rob Evans ran to the Class 6A boys' cross country state championship.

**Lake Brantley's Melissa Bateman** and Lyman's Joel Frey each won two events at the Class 6A state championship swim meet.

**Near champions**  
 Lyman's fastpitch softball team, Lake Brantley's baseball team, and the Oviedo girls' volleyball team all made it to the semifinals in their respective state tournaments.

**New faces**  
 Seminole Community College named Courtney Miller as fastpitch softball coach while at Lake Mary, Carl Brown succeeded Anna Vanlandingham as girls' basketball coach.

**New league**  
 The Women's Baseball League, brainchild of sports promoter and entrepreneur Sal Algieri, began play in Sanford and three other Central Florida cities.

**Rain, rain, rain**  
 It was wet, often, during 1994. Lake Monroe and other area bodies of water reached near-record levels and threatened to crawl out of their beds and into ours. Athletic fields and complexes became navigable waterways.

**Irish eyes**  
 Ireland's national soccer team called the Seminole County Training Center home while preparing for and playing in the 1994 World Cup.

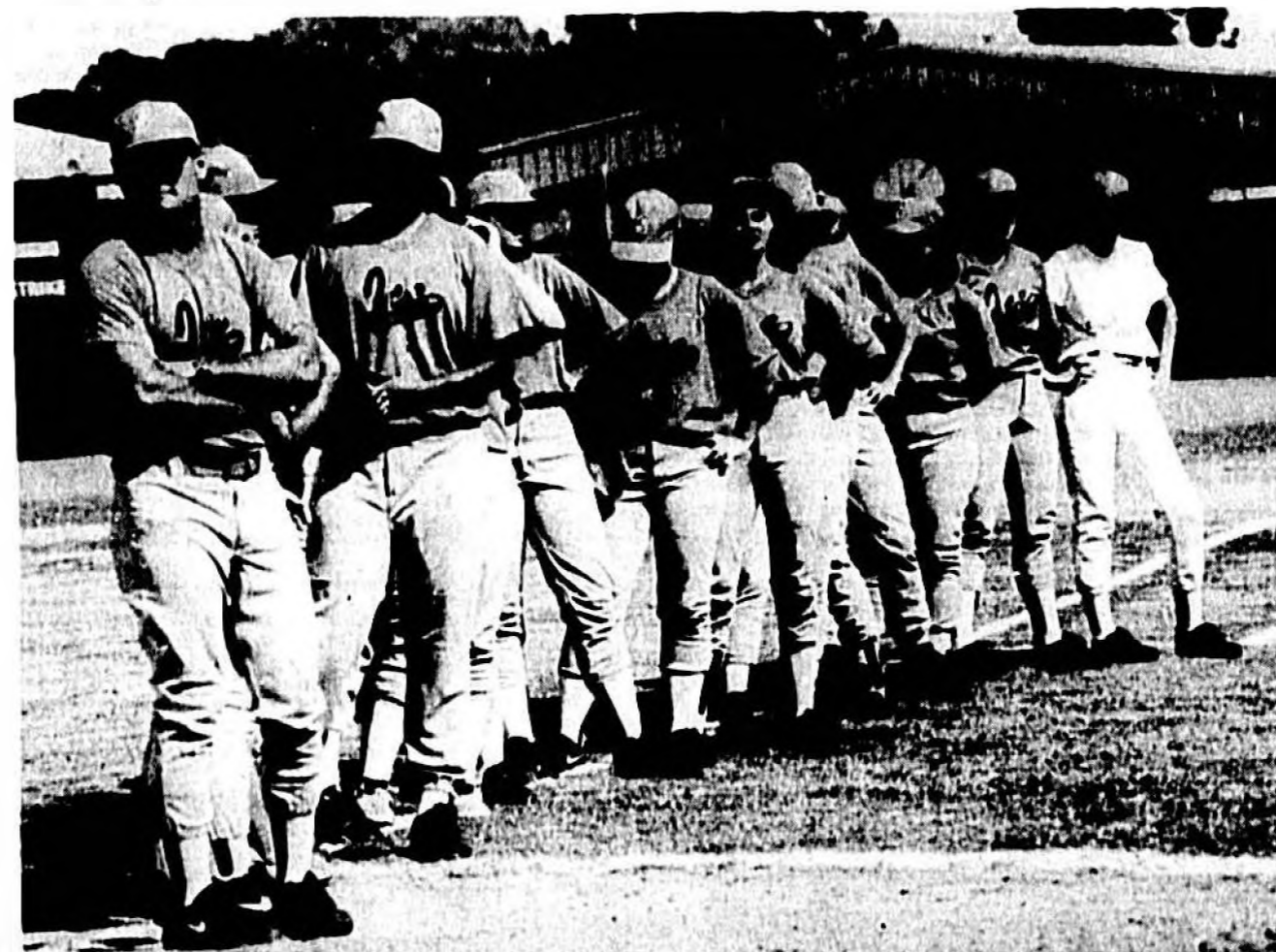
**National honors**  
 Seminole High School triple jumper Andre Scott was named the Gatorade National Track Athlete of the Year.

Lake Mary's Jody de Bruin earned a position on the men's Under-20 national soccer team.

Lake Brantley graduate Jason Varitek, who led the Georgia Tech baseball to the NCAA World Series, was selected as the Amateur Player of the Year and the Collegiate Player of the Year.



Instead battling for the pennant with the Chicago White Sox, Tim Raines (above right) was on strike this fall — along with the rest of Major League Baseball — and volunteering as a freshman football coach at Seminole High School. Meanwhile, the Sanford ice (below) were playing in the Women's Baseball League's first season.



FOR THE BEST COVERAGE OF SPORTS IN YOUR AREA, READ THE SANFORD HERALD DAILY

# STATS & STANDINGS

## All Times EST EASTERN CONFERENCE

| Team         | W  | L  | Pct. | GB     |
|--------------|----|----|------|--------|
| Orlando      | 23 | 6  | .794 | -      |
| New York     | 14 | 13 | .520 | 7      |
| New Jersey   | 12 | 16 | .430 | 11     |
| Boston       | 10 | 17 | .370 | 11 1/2 |
| Philadelphia | 9  | 17 | .346 | 12     |
| Miami        | 9  | 17 | .346 | 12     |
| Washington   | 7  | 18 | .289 | 13 1/2 |

### Central Division

| Team      | W  | L  | Pct. |
|-----------|----|----|------|
| Cleveland | 19 | 8  | .704 |
| Indiana   | 14 | 13 | .520 |
| Charlotte | 13 | 14 | .481 |
| Chicago   | 14 | 13 | .520 |
| Athens    | 12 | 16 | .430 |
| Detroit   | 9  | 16 | .360 |
| Milwaukee | 9  | 17 | .346 |

### WESTERN CONFERENCE

#### Midwest Division

| Team        | W  | L  | Pct. |
|-------------|----|----|------|
| Utah        | 19 | 8  | .704 |
| Houston     | 17 | 9  | .654 |
| San Antonio | 13 | 13 | .500 |
| Denver      | 13 | 13 | .500 |
| Dallas      | 12 | 14 | .464 |
| Minnesota   | 6  | 19 | .240 |

#### Pacific Division

| Team          | W  | L  | Pct. |
|---------------|----|----|------|
| Phoenix       | 21 | 6  | .776 |
| Sacramento    | 16 | 9  | .640 |
| L.A. Lakers   | 16 | 9  | .640 |
| Sacramento    | 14 | 13 | .520 |
| Portland      | 13 | 13 | .500 |
| Golden State  | 10 | 16 | .385 |
| L.A. Clippers | 9  | 14 | .393 |

### WESTERN CONFERENCE

#### Midwest Division

| Team          | W  | L  | Pct. |
|---------------|----|----|------|
| San Antonio   | 16 | 9  | .640 |
| L.A. Clippers | 14 | 13 | .520 |
| Golden State  | 13 | 13 | .500 |
| Portland      | 12 | 14 | .464 |
| Phoenix       | 11 | 15 | .423 |
| San Diego     | 10 | 16 | .385 |
| San Jose      | 9  | 17 | .346 |

## WESTERN CONFERENCE

| Team          | W  | L  | Pct. | PP  | PA  |
|---------------|----|----|------|-----|-----|
| San Antonio   | 16 | 9  | .640 | 207 | 207 |
| L.A. Clippers | 14 | 13 | .520 | 211 | 211 |
| Golden State  | 13 | 13 | .500 | 207 | 207 |
| Portland      | 12 | 14 | .464 | 207 | 207 |
| Phoenix       | 11 | 15 | .423 | 207 | 207 |
| San Diego     | 10 | 16 | .385 | 207 | 207 |
| San Jose      | 9  | 17 | .346 | 207 | 207 |

### WESTERN CONFERENCE

#### Midwest Division

| Team          | W  | L  | Pct. | PP  | PA  |
|---------------|----|----|------|-----|-----|
| San Antonio   | 16 | 9  | .640 | 207 | 207 |
| L.A. Clippers | 14 | 13 | .520 | 211 | 211 |
| Golden State  | 13 | 13 | .500 | 207 | 207 |
| Portland      | 12 | 14 | .464 | 207 | 207 |
| Phoenix       | 11 | 15 | .423 | 207 | 207 |
| San Diego     | 10 | 16 | .385 | 207 | 207 |
| San Jose      | 9  | 17 | .346 | 207 | 207 |

## WESTERN CONFERENCE

| Team          | W  | L  | Pct. | PP  | PA  |
|---------------|----|----|------|-----|-----|
| San Antonio   | 16 | 9  | .640 | 207 | 207 |
| L.A. Clippers | 14 | 13 | .520 | 211 | 211 |
| Golden State  | 13 | 13 | .500 | 207 | 207 |
| Portland      | 12 | 14 | .464 | 207 | 207 |
| Phoenix       | 11 | 15 | .423 | 207 | 207 |
| San Diego     | 10 | 16 | .385 | 207 | 207 |
| San Jose      | 9  | 17 | .346 | 207 | 207 |

## WESTERN CONFERENCE

| Team          | W  | L  | Pct. | PP  | PA  |
|---------------|----|----|------|-----|-----|
| San Antonio   | 16 | 9  | .640 | 207 | 207 |
| L.A. Clippers | 14 | 13 | .520 | 211 | 211 |
| Golden State  | 13 | 13 | .500 | 207 | 207 |
| Portland      | 12 | 14 | .464 | 207 | 207 |
| Phoenix       | 11 | 15 | .423 | 207 | 207 |
| San Diego     | 10 | 16 | .385 | 207 | 207 |
| San Jose      | 9  | 17 | .346 | 207 | 207 |

## WESTERN CONFERENCE

| Team          | W  | L  | Pct. | PP  | PA  |
|---------------|----|----|------|-----|-----|
| San Antonio   | 16 | 9  | .640 | 207 | 207 |
| L.A. Clippers | 14 | 13 | .520 | 211 | 211 |
| Golden State  | 13 | 13 | .500 | 207 | 207 |
| Portland      | 12 | 14 | .464 | 207 | 207 |
| Phoenix       | 11 | 15 | .423 | 207 | 207 |
| San Diego     | 10 | 16 | .385 | 207 | 207 |
| San Jose      | 9  | 17 | .346 | 207 | 207 |

## WESTERN CONFERENCE

| Team          | W  | L  | Pct. | PP  | PA  |
|---------------|----|----|------|-----|-----|
| San Antonio   | 16 | 9  | .640 | 207 | 207 |
| L.A. Clippers | 14 | 13 | .520 | 211 | 211 |
| Golden State  | 13 | 13 | .500 | 207 | 207 |
| Portland      | 12 | 14 | .464 | 207 | 207 |
| Phoenix       | 11 | 15 | .423 | 207 | 207 |
| San Diego     | 10 | 16 | .385 | 207 | 207 |
| San Jose      | 9  | 17 | .346 | 207 | 207 |

## WESTERN CONFERENCE

| Team          | W  | L  | Pct. | PP  | PA  |
|---------------|----|----|------|-----|-----|
| San Antonio   | 16 | 9  | .640 | 207 | 207 |
| L.A. Clippers | 14 | 13 | .520 | 211 | 211 |
| Golden State  | 13 | 13 | .500 | 207 | 207 |
| Portland      | 12 | 14 | .464 | 207 | 207 |
| Phoenix       | 11 | 15 | .423 | 207 | 207 |
| San Diego     | 10 | 16 | .385 | 207 | 207 |
| San Jose      | 9  | 17 | .346 | 207 | 207 |

## WESTERN CONFERENCE

| Team          | W  | L  | Pct. | PP  | PA  |
|---------------|----|----|------|-----|-----|
| San Antonio   | 16 | 9  | .640 | 207 | 207 |
| L.A. Clippers | 14 | 13 | .520 | 211 | 211 |
| Golden State  | 13 | 13 | .500 | 207 | 207 |
| Portland      | 12 | 14 | .464 | 207 | 207 |
| Phoenix       | 11 | 15 | .423 | 207 | 207 |
| San Diego     | 10 | 16 | .385 | 207 | 207 |
| San Jose      | 9  | 17 | .346 | 207 | 207 |

## WESTERN CONFERENCE

| Team          | W  | L  | Pct. | PP  | PA  |
|---------------|----|----|------|-----|-----|
| San Antonio   | 16 | 9  | .640 | 207 | 207 |
| L.A. Clippers | 14 | 13 | .520 | 211 | 211 |
| Golden State  | 13 | 13 | .500 | 207 | 207 |
| Portland      | 12 | 14 | .464 | 207 | 207 |
| Phoenix       | 11 | 15 | .423 | 207 | 207 |
| San Diego     | 10 | 16 | .385 | 207 | 207 |
| San Jose      | 9  | 17 | .346 | 207 | 207 |

## WESTERN CONFERENCE

| Team          | W  | L  | Pct. | PP  | PA  |
|---------------|----|----|------|-----|-----|
| San Antonio   | 16 | 9  | .640 | 207 | 207 |
| L.A. Clippers | 14 | 13 | .520 | 211 | 211 |
| Golden State  | 13 | 13 | .500 | 207 | 207 |
| Portland      | 12 | 14 | .464 | 207 | 207 |
| Phoenix       | 11 | 15 | .423 | 207 | 207 |
| San Diego     | 10 | 16 | .385 | 207 | 207 |
| San Jose      | 9  | 17 | .346 | 207 | 207 |

## WESTERN CONFERENCE

| Team          | W  | L  | Pct. | PP  | PA  |
|---------------|----|----|------|-----|-----|
| San Antonio   | 16 | 9  | .640 | 207 | 207 |
| L.A. Clippers | 14 | 13 | .520 | 211 | 211 |
| Golden State  | 13 | 13 | .500 | 207 | 207 |
| Portland      | 12 | 14 | .464 | 207 | 207 |
| Phoenix       | 11 | 15 | .423 | 207 | 207 |
| San Diego     | 10 | 16 | .385 | 207 | 207 |
| San Jose      | 9  | 17 | .346 | 207 | 207 |

## WESTERN CONFERENCE

| Team          | W  | L  | Pct. | PP  | PA  |
|---------------|----|----|------|-----|-----|
| San Antonio   | 16 | 9  | .640 | 207 | 207 |
| L.A. Clippers | 14 | 13 | .520 | 211 | 211 |
| Golden State  | 13 | 13 | .500 | 207 | 207 |
| Portland      | 12 | 14 | .464 | 207 | 207 |
| Phoenix       | 11 | 15 | .423 | 207 | 207 |
| San Diego     | 10 | 16 | .385 | 207 | 207 |
| San Jose      | 9  | 17 | .346 | 207 | 207 |

## WESTERN CONFERENCE

| Team          | W  | L  | Pct. | PP  | PA  |
|---------------|----|----|------|-----|-----|
| San Antonio   | 16 | 9  | .640 | 207 | 207 |
| L.A. Clippers | 14 | 13 | .520 | 211 | 211 |
| Golden State  | 13 | 13 | .500 | 207 | 207 |
| Portland      | 12 | 14 | .464 | 207 | 207 |
| Phoenix       | 11 | 15 | .423 | 207 | 207 |
| San Diego     | 10 | 16 | .385 | 207 | 207 |
| San Jose      | 9  | 17 | .346 | 207 | 207 |

## All Times EST Thursday, Dec. 11

### UNLV vs. Central Michigan 34

UNLV 34, Central Michigan 34

### Sunday, Dec. 12

Blue St. Grays 37

### Monday, Dec. 13

Urbana 12

### Tuesday, Dec. 14

Urbana 12

### Wednesday, Dec. 15

Urbana 12

### Thursday, Dec. 16

Urbana 12

### Friday, Dec. 17

Urbana 12

### Saturday, Dec. 18

Urbana 12

### Sunday, Dec. 19

Urbana 12

### Monday, Dec. 20

Urbana 12

### Tuesday, Dec. 21

Urbana 12

### Wednesday, Dec. 22

Urbana 12

### Thursday, Dec. 23

Urbana 12

### Friday, Dec. 24

Urbana 12

### Saturday, Dec. 25

Urbana 12

### Sunday, Dec. 26

Urbana 12

### Monday, Dec. 27

Urbana 12

### Tuesday, Dec. 28

Urbana 12

### Wednesday, Dec. 29

Urbana 12

### Thursday, Dec. 30

Urbana 12

### Friday, Dec. 31

Urbana 12

### Saturday, Jan. 1

Urbana 12

### Sunday, Jan. 2

Urbana 12

### Monday, Jan. 3

Urbana 12

### Tuesday, Jan. 4

Urbana 12

### Wednesday, Jan. 5

Urbana 12

### Thursday, Jan. 6

Urbana 12

## Parade Race

| Team   | W  | L | Pct. |
|--------|----|---|------|
| Parade | 10 | 5 | .667 |
| Race   | 8  | 7 | .538 |
| Other  | 6  | 9 | .400 |

### Parade Race

| Team   | W  | L | Pct. |
|--------|----|---|------|
| Parade | 10 | 5 | .667 |
| Race   | 8  | 7 | .538 |
| Other  | 6  | 9 | .400 |

### Parade Race

| Team   | W  | L | Pct. |
|--------|----|---|------|
| Parade | 10 | 5 | .667 |
| Race   | 8  | 7 | .538 |
| Other  | 6  | 9 | .400 |

### Parade Race

| Team   | W  | L | Pct. |
|--------|----|---|------|
| Parade | 10 | 5 | .667 |
| Race   | 8  | 7 | .538 |
| Other  | 6  | 9 | .400 |

### Parade Race

| Team   | W  | L | Pct. |
|--------|----|---|------|
| Parade | 10 | 5 | .667 |
| Race   | 8  | 7 | .538 |
| Other  | 6  | 9 | .400 |

### Parade Race

| Team   | W  | L | Pct. |
|--------|----|---|------|
| Parade | 10 | 5 | .667 |
| Race   | 8  | 7 | .538 |
| Other  | 6  | 9 | .400 |

### Parade Race

| Team   | W  | L | Pct. |
|--------|----|---|------|
| Parade | 10 | 5 | .667 |
| Race   | 8  | 7 | .538 |
| Other  | 6  | 9 | .400 |

### Parade Race

# Business

## IN BRIEF

### ABC Board membership

**ALTAMONTE SPRINGS** — David Beasley, a Lake Mary resident, has been re-elected to the board of directors of the Associated Builders and Contractors (ABC) for a three-year term. This is his second stint on the board. Beasley is vice president of operations at Tri-City Electrical Contractors, Inc., Altamonte Springs.

### Sanford real estate sales

**SANFORD** — Ralph M. and Edna M. Sheffler have purchased a 30,000 square foot office/showroom/warehouse, located at 490 Silver Lake Drive in Sanford. The purchase price from Silver Lake Realty Company, was listed at \$742,500. Jim Duke of Duke Properties brokered the transaction. Jim Duke, along with Ted Bywater of the Bywater Company, have also arranged the purchase of approximately 19 acres of industrial land located off Aero Lane in Sanford, for a price of \$700,000, from Wheeled Coach Industries, to Thomas J. Gant.

### AGC new offices

**WINTER PARK** — The Associated General Contractors will begin 1995 with a new Central Florida chapter, which includes new officers and directors whose positions become effective Jan. 1.

The Central Florida chapter will encompass Seminole, Orange, Osceola, Lake, Volusia and Brevard counties, which have been part of the Tampa-based AGC for the past 30 years.

AGC Central Florida Executive Vice Pres. Arch McLean said the markets in the Tampa area and Orlando area are different, and the new chapter will be better able to address the need in the Central Florida area.

Incoming AGC President is Rich Bean of Martin I. Eby Construction.

The AGC offices are to be located at 2273 Lee Road, Suite 202, in Winter Park.

### Business books

**CASSELBERRY** — The Central branch of the Seminole County Public Library now has a copy of "The Personnel Executives Contactbook." This source provides a listing of 30,000 companies giving names, address, phone and fax number, number of employees, financial information, and name of contact person.

Library officials say anyone seeking a job will find this source very useful, especially with the addition of the contact name.

Related works that give complete information on the company plus a contact person are "The Job Bank Guide to Employment Services," and the "Adams Job Almanac."

The Seminole County Public Library Central Branch is located at 215 N. Oxford Road, Casselberry. It is open Monday through Thursday from 9 a.m. until 9 p.m., and Friday and Saturday from 9 a.m. until 5 p.m.

### County chamber event

**CASSELBERRY** — The Greater Seminole County Chamber of Commerce will hold its Seminole Business Breakfast, Wednesday, Jan. 4, from 7:20 a.m. until 9 a.m., at Holiday Inn, Altamonte Springs. Speaker will be Dr. Lynn Williamson, medical director for AvMed Health Plan who will speak on the "Alphabet of Health Care."

Cost is \$40 for members, \$15 for guests. Reservations are required. Please the chamber office in Casselberry at 458-2662.

### Lake Mary chamber

**LAKE MARY** — The Greater Lake Mary/Heathrow Chamber of Commerce will hold a breakfast meeting Wednesday, Jan. 4, beginning at 7:45 a.m. Guest speaker will be Mayor Lowry Rockett who will speak on the Target Industry plan for Lake Mary in 1995.

Cost is \$3 for members, \$5 for non members. For additional information, phone the chamber office at 333-4748.

### Computer student

**SANFORD** — Traci Williams of Sanford has enrolled in the Computer-Aided Drafting Technology program at ITT Technical Institute in Mattland. The technical college is one of a nationwide network of 51 ITT Technical Institutes operated by Indianapolis-based ITT Educational Services.

The program, which begins March 6, will prepare Williams for an entry-level position in computer-aided drafting technology.

### Coldwell people

**OVIDO** — Charles Gigante and Cindy Hollenbeck have joined the Oviedo office of Coldwell Banker Residential Real Estate. The Oviedo office is located at 1419 W. Broadway.

Tom Meskeil has joined Coldwell's Longwood office located at 2160 W. State Road 434.

### DBCC workshops

**DAYTONA BEACH** — Daytona Beach Community College, DBCC, through the Business and Professional Institute will be sponsoring a number of upcoming workshops, titled "Fundamentals of Supervisory Training."

Classes start Jan. 11. Registration is now open. Courses deal with such subjects as problem solving, process management, budget process, performance evaluation, communication, goal setting, and many others.

Classes are also offered as credit courses for students. For complete information, costs, times and locations, contact Teri Holleran, (904)254-4450.

# Home sales remain strong

By **NOEL SPENAU**  
Herald Staff Writer

The Florida Association of Realtors, (FAR) says Florida home sales remain strong despite six interest rate hikes in recent history.

Statewide, the FAR says sales of single-family homes increased three percent in November 1994 compared to November 1993.

In the Orlando Metropolitan Statistical Area, which includes Sanford and Seminole County, the change wasn't quite as high as in some parts of the state. Single-family existing home sales were reported at 991 in November 1993, and 1,001 in 1994, an increase of only one percent.

The median sales price in the Orlando MSA declined by two percent since last

November, at \$68,000.

Among the highest home-sale increases in the state were Naples, increasing 34 percent. That area has now recorded a double-digit sales increase for 14 consecutive months. Naples was also listed by the FAR as having the highest median sales price for existing single-family homes, at \$145,700.

Mike Pederson, sales manager with Bluebill Properties in Naples says many existing-home buyers are moving to his area from New York and New Jersey.

He added that many are being transferred to Naples by their employers, with Circuit City and Target recently opening stores in the area.

Other high sales increase areas were Tallahassee, up 26 percent, Punta Gorda, up 15 percent. Panama City showed an in-

crease of 47 percent, but figures pertaining to several areas usually associated with that MSA were not available for November.

Panama City also showed an increase in the median sales price from November to November, going up from \$68,100 to \$81,100, an increase of 19 percent. Larry Carroll, president of the Bay County Association of Realtors in Panama City says most of those purchases were relocations, not local residents moving within the area.

He said that area's low cost of living, military facilities, retirement communities and beaches are the major attractions for those buyers.

The Florida Association of Realtors provides programs, services, continuing education, research and legislative representation to its 60,000 members in 83 local boards/associations throughout Florida.

## UPS honors employees

Ed Miller  
**LONGWOOD** — Ed Miller was recently honored by United Parcel Service for completing 30 years of service with the company. Miller, who is a center assistant, with UPS in Longwood, was cited for his loyal service contributions to UPS. He began his career with the company working as a part-time center assistant in 1974, and has not missed a single day of work in the entire time.

Miller lives in Casselberry.

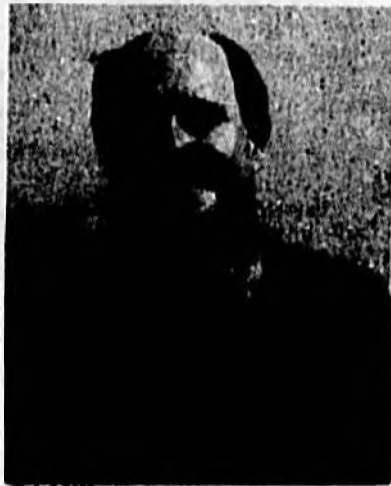
Lewis Bell  
**SANFORD** — Lewis Bell, a delivery driver for United Parcel Service, was recently recognized by the company for completing 30 years driving without an accident.

Bell works out of the facility located at 1050 Bennett Drive. He presently provides delivery service in the Sanford area.

"You must be aware of what's around you and watch out for the other guy," he commented.

Center Manager Tom Lancaster presented the 20-year safe driving award at a ceremony honoring Bell's achievements.

Bell and his wife Ruth live in Casselberry. They have two children, Scott and Jeff.



Ed Miller



Lewis Bell

## Judge rules in favor of Alauca residents

By **NOEL SPENAU**  
Herald Staff Writer

**SANFORD** — A group of homeowners made their voices heard in court, and won their argument. At odds was the sale of a community country club at Alauca, located off Markham Woods Road, between Longwood and Lake Mary.

Circuit Judge O.H. Eaton ruled that residents of Alauca, an affluent, gated community, had the right to buy the club at a much lower price than the developer wanted.

In making his decision in favor of the Alauca residents, the judge, in effect, prevents the opening of the country club to others.

"We would have found ourselves with thousands of people from Canada," said Ralph Abell, one of five homeowners at Alauca who filed a class-action suit to halt the sale to a Toronto firm.

Alauca owners Westbury Development Inc. and Westbury Alauca Inc. had an offer they said totaled \$7.5 million from ClubLink, a Toronto company that owns five golf courses and lets every member use all of its clubs.

The homeowners, who had the right to buy the club if they could match the offer, claimed ClubLink's offer was highly in-

flated to prevent them from doing just that.

The residents offered \$2.8 million in cash, \$270,000 for clubhouse equipment, and 16 club memberships and thousands of rounds of golf for the developer to offer as incentives to prospective buyers of the remaining 40 lots in Alauca.

ClubLink's offer called for payment in ClubLink stock, other securities and a note with no interest for 2 1/2 years.

Timothy Zweber, an appraiser with Merrill Lynch, testified Wednesday that ClubLink's offer was not worth nearly that much. He said the company's stock was highly overvalued in the offer and called the other securities "junk bonds."

Dennis Durkin, the developer's lawyer, contended ClubLink's offer was legitimate and that the residents' counteroffer fell far short of the club's value.

Eaton agreed with the residents, and his approval was greeted by loud applause from some 100 homeowners attending the hearing.

A number of well-known sports figures own homes in Alauca, including golfer Gary Player and several players from the Orlando Magic basketball team. Football star Bo Jackson owns several lots.

Information from Associated Press is contained in this report.

## Business inspired by family circumstances

By **NOEL SPENAU**  
Herald Staff Writer

**SANFORD** — There are times when a circumstance, even one which is a serious problem, produces benefits for others. Such is the case at Carolyn and Nat Richburg's Sunshine Adult Day Care, Inc., at 441 E. Airport Blvd. in Sanford.

Carolyn's mother has Alzheimer's disease. As such, she eventually needed to have nursing home-type care. The type care available, however, was not exactly what the Richburgs believed was the best for that situation.

After lengthy consideration, the couple started Sunshine Adult Day Care, along with friends Bill and Lila Cooper.

The facility deals mostly with patients exactly like Carolyn's mother, an Alzheimer's patient, in need of day care, but still wanting to be part of as much normal life as possible.

Becky Hopkins serves as director for the business. She has established a routine beginning at 7:30 a.m., through 4:30 p.m. to keep customers occupied, but still capable of having outside visits by friends and family members. Activities beginning at 7:30 a.m. include arts and crafts,

walking, perusing the news in the paper and on TV, and free time for visits.

At 10 a.m., it's snack time, followed by time for letter writing, quilting bees, sewing, card games, or other projects.

Lunch is served at noon. At 1 p.m., it's rest period for some, with games, reading and other activities offered, both independently or assisted.

Snack time returns at 3 p.m. once again, with the remainder of the afternoon open for any activity the customer wishes, or for more visits.

From 5:30 until 6:30 p.m., it's preparation to return to their homes.

Now, the Richburgs have added another service. They are holding Alzheimer's support group meetings at their facility, on the first Wednesday of each month. They have found it is another way to help people who have family members faced with this problem.

Sunshine Adult Day Care, Inc., is located at 441 E. Airport Blvd., east of U.S. Highway 17-92, just past the GreeneWay, and next to Prescott Baptist Church. For additional information, phone Becky Hopkins, at 330-0088.

## UCF business seminars

By **NOEL SPENAU**  
Herald Staff Writer

The Small Business Development Center of the University of Central Florida is continuing its series of workshops and seminars for the first three months of 1995.

The following is the schedule for January opportunities:

Jan. 4 — Financing Your Business — 1 p.m. to 3 p.m. Learning to evaluate loan potential using SBA's loan checklist. Free.

Jan. 6 — Loan Application, Part A — 8 a.m. to 12 noon. How to calculate sales and market share estimates for financial projections. Fee, \$40.

Jan. 9 — Ideas to Dollars — New Product Inventory workshop — 12 noon to 3 p.m. Fee, \$35.

Jan. 12 — Tax Forum, 7:30 a.m. to 9:30 a.m. Income tax, payroll tax, sales tax, property tax. Free.

Jan. 13 — Loan Application, Part B — 8 a.m. to 12 noon. Necessary financial documents needed for a loan application. Fee, \$40.

Jan. 18 — Financing your Business — 1 p.m. to 3 p.m. (see Jan. 4) Free.

Jan. 19 — ABC's of exporting — 9 a.m. to 12 noon. Basics of entering overseas markets. Fee, \$35.

Jan. 20 — Basics of Government Procurement — 9 a.m.

to 12 noon. Doing business with federal, state and local government agencies.

Jan. 23 — (Same as above, but offered 1 p.m. to 4 p.m. in DeLand Campus)

Jan. 28 — 8 a.m. to 5 p.m. — Doing Business with the State of Florida. A conference with representatives from various departments of the state, to discuss opportunities for suppliers and information on the certification process.

Some of these same classes will be repeated or expanded during February and March.

For several of the workshops in which a fee is charged, advance reservations may produce a \$10 discount.

For additional information, contact the University of Central Florida College of Business Administration Small Business Development Center, Orlando, (407) 823-5554, or Diane Mullen, at the Small Business Development Center, (407) 823-8097.

## Tapped for state board

Daniel D. Jittu, president of Select Investigative Services, has been appointed to the board of directors for the International Council of Central Florida.

The Council is a non-profit community organization which acts as the official government-designated host for influential guests and dignitaries of the United States.

During the first nine months of this year, the council scheduled 504 international government, business and professional leaders and State Department representatives from 148 countries to visit the area.

Select Investigative Services, Inc., is a national security agency specializing in private and government security.

Jittu said since starting the business in 1988, he has provided security service to almost a dozen national government



Daniel D. Jittu

and business organizations. Select Investigative Services is located at 2520 N. County Road 427, Suite 158, in Longwood, and is a minority-owned nationwide security corporation.

**A SEE-WORTHY WAY TO GO!**

**We can help sell your boat with our**  
**Sanford Herald**  
**Classified Ads 322-2611**

**FIRECHEK**  
FIRE PROTECTION COMPANY

**SALES & SERVICE**  
on  
**FIRE EXTINGUISHERS**

**324-0201**

**For Personal & Commercial Insurance**

**TONY RUSSI, JR.**  
**TONY RUSSI**  
**INSURANCE**  
2878 S. French Ave.  
Sanford  
**322-0285**  
Auto, Marine, Life Insurance

# People



## Joneses married 50 years Year ends with joyful celebrations

Robert M. (Bob) and Annette A. Jones of Sanford celebrated their 50th wedding anniversary on Dec. 2. A dinner party was given in honor of the couple at the home of daughter and son-in-law, Cheryl and Dick Willink assisted by Joyce and Stan Welling, daughter and son-in-law.

The couple met on Sept. 4, 1943 and were married on Sept. 4, 1944 by the Rev. Joe Telle in the Methodist Church parsonage, Sanford. Bob was stationed at the Sanford Naval Air Station. After he was released from service he worked for George Maffett until he opened his own business, Jones Auto Service, at 1018 Sanford Ave. Annette kept the books and ran errands for the business but enjoyed being a homemaker.

For the anniversary celebration, Annette wore a winter white pantsuit and Bob wore a burgundy sport coat with Navy blue trousers.

Fifty guests from the local area attended the dinner with Mr. and Mrs. Joe Cronshaw coming from Fort Charlotte.

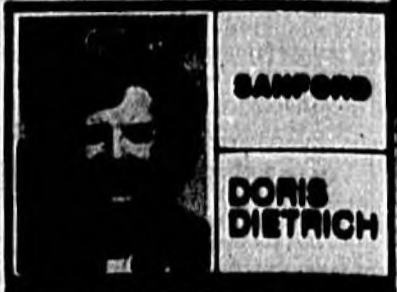
The Willink home was decorated for the holidays, and on display was an anniversary banner and table decorated in gold and white. Dinner was prepared by the couple's daughter and granddaughters. The honorees cut an anniversary cake following the dinner.



Annette and Robert Jones

Caseberry; son-in-law, Dick, is a plastics technician for E.C.C. International. Daughter, Joyce Jones Welling, is an entertainer (singer) and has worked at Conklin Porter & Holmes Engineering, Inc. of Sanford. Son-in-law, Stan, was a building official for

the city of Lake Mary. They severed their employment in the spring of 1984 to follow their dream of singing and entertaining throughout the United States.



SANFORD

DORIS DIETRICH

Grandchildren are Allison Johnson, Kim Smith, Tami Welling, and Clay Welling. Their 44-year-old great grandchild is Amanda Johnson.

Bob retired April 1, 1984, 30 years after beginning his business, and the couple have enjoyed traveling around the country in their motor home.

This past summer they spent three months traveling to Myrtle Beach, N.C., Virginia Beach, Va., Williamsburg, Va., Maryland, Pennsylvania (Amish country), Niagara Falls, N.Y., Canada, Ohio, Kentucky, Nashville, Tenn., Pigeon Forge, Tenn. and the Smoky Mountains.

The couple's secret for a long life is to be happy. **□ See Dietrich, Page 58**

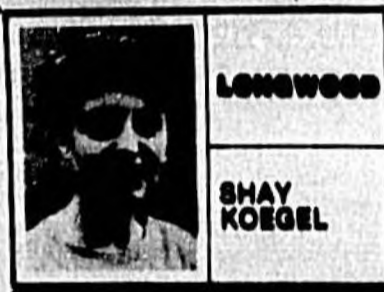


Delightful event at annual open house fund-raiser for the Sweetwater Oaks Woman's Club.

## Get involved in variety interests in Longwood

Happy New Year! This is the time of the year when there is reflection of the previous year and commitments are made regarding the New Year. If any of your resolutions revolve around getting involved, the groups and organizations in Longwood and Winter Springs serve a wide variety of interests and provide charitable public service by the most dedicated and wonderful group of people. As you browse through the following list, take notes and plan to become involved; these are the organizations that have filled the Longwood column in the past six months.

American Association of Retired Persons, Winter Springs



LONGWOOD

SHAY KOEGEL

Chapter 4040 meets monthly and you may call Marian Dolin at 327-7334 for further information.

Canine Companion for Independence (CCI), a nonprofit organization to assist those with physical disabilities other than dogs. **□ See Longwood, Page 58**



LAKE MARY

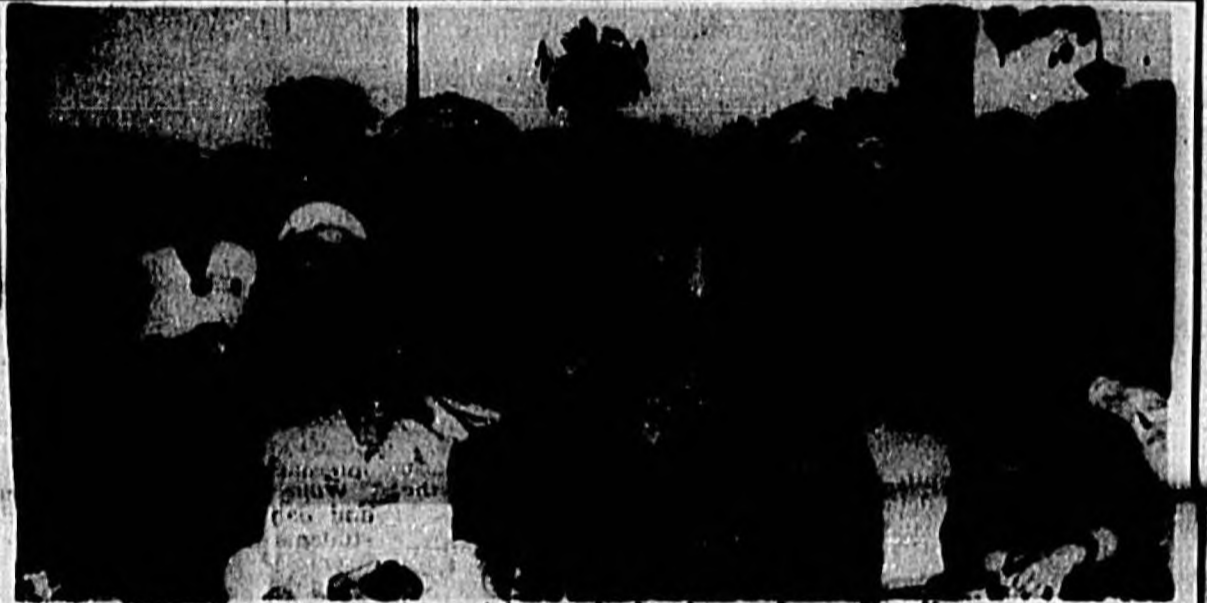
MARY POWELL

## Club adopts family

Lake Mary Woman's Club held its annual Christmas party Wednesday, Dec. 14 at the home of club member Rosemary Traeger. Rosemary's home was beautifully decorated for the occasion. In one room, her Christmas village was on display. Also on display was her collection of Santas.

For the party, each member brought a present. The women then drew numbers. Members picked presents from under the tree, or if they saw someone else had a present they liked, they could pick the present from that person, who then had to pick from under the tree or from another person. One particular present with a large green bow made the rounds of almost every member. Some had it more than once.

The party was also the time to put the finishing touches on the woman's club Christmas package. The club adopted a Lake Mary family for the year. **□ See Lake Mary, Page 58**



Lake Mary Women's Club members wish everybody a happy, happy New Year.



Sheila Sawyer and Karen Best, Lake Mary Women's Club members, open gifts at party.

## Crooms High observes silver reunion during holidays

There was a silver anniversary reunion celebration for the Crooms High School Class of 1969. Yes, they gathered from

around the globe. The well-planned four-day celebration began with the renewing of old friendships with former

classmates. "A year to remember" said the get-together night committee of Yvonne Beasley, Geraldine

Walker, Herbert Peoples, Irving Johnson. Special guests for the evening were former teachers of the class, Raymond Gaines and Lemarr Richardson.

The fun continued for the class of '69 at the prom, yes, the music was furnished by the great deejay, "Mean Jean." The music of the Sixties flowed and the latest in dance and fashion could be seen by the stars of the night, the classmate of 1969.

Connie Williams and Fannie Miller reminded the class that there was indeed plenty of talent in the class as the Temptations, the Supremes and the great James Brown were re-enacted by such talented former students as Lee Barne Haws, Ronald DeLone, Marva Davis, Jewell Simmons, and Ella Wiggins. The highlight of the evening was the crowning of Mr. and Mrs. Crooms High of 1969. The winners were class president Louis Montgomery and Sylvia Brinson.

The weekend continued with the family picnic on Saturday where everyone enjoyed the great food of the season. On Sunday morning at 11 a.m., the class gathered at the New Bethel



SANFORD

MARVA HAWKINS

Baptist Church to give thanks for the 23 years of being able to gather in joy, peace and remembrance of their days as students at Crooms. The music of the morning worship was rendered by the male chorus of the church. Delivering the message of the morning was the Rev. Tommie Lee White of the class of '69. He broke the bread of life and gave this inspirational message — "The king is coming, will you be ready?" Those attending this service of prayer and praise will forever remember his words of wisdom.

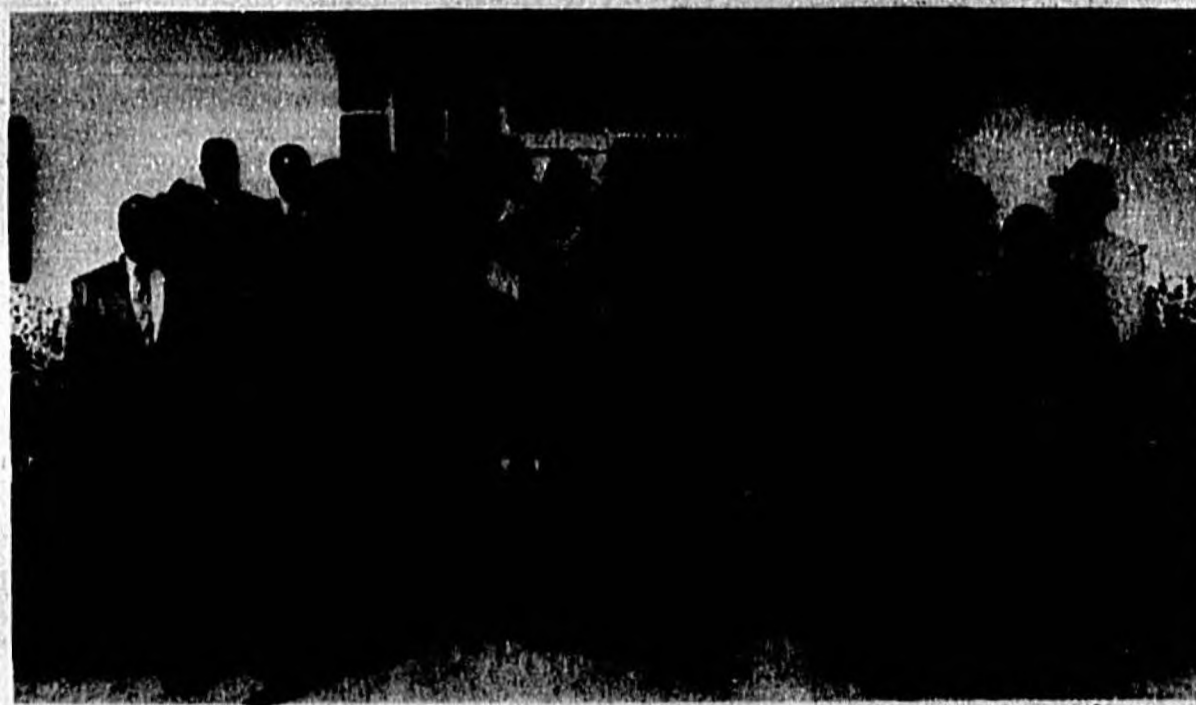
A special memorial was offered in the names of the deceased members. Bernadette Baker Gardener, chairman, Richard Burts, Con-

stance Williams Anderson and the committee were alerted for planning a job well done.

### White coordinates Olympic Games

Crooms Academy graduates continue to excel and show their talents throughout the United States. Sanfordites, and former Crooms Academy graduate, Willis James (Poppa) White has been renowned for his special talents, not only for his musical abilities, but for his knowledge of food. White is special education teacher in the Early County, Georgia school system. He recently sponsored a cultural foods festival; this event is held yearly.

Students said White visits various countries throughout their studies by tasting various foods and making diabetics to represent the different nations and cultures. Over 30 classes prepare dishes representing the country they have chosen. For their efforts the Early County Middle School, where White is an instructor, was selected to go to Atlanta to receive an honor for their food festival display for the year. **□ See Hawkins, Page 58**



Crooms High School Class of 1969 at four-day reunion celebration during the holidays.

**WEDDING**



Mr. and Mrs. Jonathan Compton Cary Sr.

# Georgia Margeolas, Jonathan Cary Sr. exchange vows

SANFORD — Georgia Anastasia Margeolas and Jonathan Compton Cary Sr. were married Nov. 27, 1984, 4 p.m., at the Centennial Park Gazebo, Sanford. The Rev. Jim Watson performed the outdoor garden wedding.

The bride is the daughter of Mr. and Mrs. Stasia Margeolas of Sanford, owners of the Golden Lamb Restaurant.

The groom is the son of Mrs. William G. Whitley of Troy, Ala., and the late Mr. Paul Burleson Cary Sr.

Given in marriage by her father, the bride chose for her vows a formal candlelight satin gown. The lace-over-satin bodice, covered with pearls and sequins, featured a square neckline. The fitted sleeves with lace overlay were gently puffed at the shoulders. The detachable full train of matching candlelight satin was edged with lace, pearls and sequins. Her fingerless illusion veil, trimmed with sequins and pearls, was held by a band of white satin flowers, open crown and white illusion pouf. She carried a cascading bouquet of white silk roses with baby red and black ribbon roses trimmed with pearls and lace, interspersed with red, white and black ribbon.

The groom wore black tux with tails, white shirt, black bowtie and vest. He wore a silk red rose boutonniere in his lapel. The boutonniere was highlighted by a miniature white cowboy hat and baby's breath.

Charlotte Price, sister of the bride, served as matron of honor. She wore a fitted black velvet dress with high-low black satin skirt. The dress featured a satin portrait collar with ivory lace. She carried a round bouquet of silk red, white and black baby roses trimmed with pearls and red and white ribbon.

Panagiota Van Horn, sister of the bride, served as maid of honor.

Bridesmaid was Tasha Margeolas, sister of the bride.

Junior bridesmaid was Marilyn Nicole, daughter of the bride. Their dresses and flowers were identical to the honor attendant's.

Spencer Van Cary Sr., brother of the groom, served as best man.

Ushers were Rick Leist and Spencer Van Cary Jr., nephew of the groom.

Groomsmen were Jason Ganas, and Mike Margeolas, the bride's brother.

The groom's attendants wore black tuxedos with white shirts and red and black bowties. They wore red and black cummerbunds and silk red rose boutonnieres in their lapels.

Flower girl was Alexandria Elizabeth Cary, daughter of the groom.

Ring bearer was Jonathan Compton Cary Jr., the groom's son.

Following the ceremony, a reception was held at The Cultural Arts Center, Sanford. Assistants for the reception were train bearers, Mary Kimball and Vaaha Van Horn, nieces of the bride; assistants for seating arrangements, Panagiota Kaye, daughter of the bride; assistants for bride's book, Rosanna Campis and Ginger Hollis, sister of the groom.

The wedding cake, decorations and flowers were made by Cheryl Leist.

All of the leftover food from the reception was donated to the Sanford Rescue Mission.

After a wedding trip to the Bahamas, the newlyweds are making their home in Deltona.

The bride owns and operates her own local karaoke/disco entertainment business. The groom works for H.B. Zachary Construction of Florida at Stanton Energy Project Phase II, Orlando Utilities and is starting his own local welding business.

## Dietrich

Continued from Page 48  
marriage is to never go to bed angry with each other.

### DAVA Meets Children's party

On Sunday, Dec. 11, the Disabled Veterans Auxiliary hosted their annual children's party. Wanda Evans and Denise Dean were co-chairpersons for approximately 80 youngsters — ages 2 to 10 years old.

While waiting for Mr. and Mrs. Santa Claus, they were entertained royally by Raspberry the clown and her beautiful bird. Raspberry is very talented in balloon art so each child received a made-to-order balloon.

Following Raspberry, Ginger Wright's battalion of baton twirlers performed. Wright teaches in Longwood and the young women twirled and danced to seasonal music in gold sequined costumes, delighting everyone.

Auxiliary members served homemade cookies, hot dogs and punch.

Then Mr. and Mrs. Claus arrived with "Misty" the wonder dog. Misty is really a white toy poodle but acts like a professional "ham." She loves to perform.

This is the 10th anniversary that Bud Samson and Betty Himes have been Mr. and Mrs. Santa Claus at veterans' clinics, clubs and nursing homes throughout the area. The toys they distributed were donated by a local merchant.

The auxiliary thanks everyone for making a great day for the children.

### Serinity social

Laurens Alpha Tau Chapter of Beta Sigma Phi held its annual Christmas party at the Lake



Betty Himes and Bud Samson have played Mr. and Mrs. Santa Claus for 10 years at the DAVA children's Christmas parties and other veterans' functions.

Mary home of Joyce and Chuck Sammet on Dec. 18. Members and husbands enjoyed visiting during the evening throughout the lovely home and patio area. A feast of delicious hors d'oeuvres were enjoyed by all and Beta buddy gifts were exchanged. Those in attendance were Pam and Buddy Hawkins, Amoret and John Linton, June and Carl Helms, Laurel and Bob

Trumbly, Phyllis and Claude Hedge, Joyce and Chuck Sammet, Nancy Corliss, Maureen King, Patricia Johnson, Marlene Clausen and Grace Marie Stinecipher.

### A Dutch treat

Jackie and Michael Cocio are in the Netherlands where they have spent the holidays with their daughter and family.

Susan and Marco Boot and their children, Patrick and Michael, who make their home there.

Jackie said she and Michael will be visiting the Netherlands and surrounding territory for two months.

She wrote, "We are sure enjoying our visit to this charming village. It's like going back in time. Every day, I can't wait to see if it's frosty, sunny, misty or windy. Summers are purple to pink to gold to gray...."

### Rite gains benefit

Patt Shadr, vice president of the Rite Community Theatre Board, was all excited the past week over the big New Year's gain last night to benefit the Rite Theatre restoration. The glittering event was held at the Embassy Suite Hotel in Altamonte Springs.

Patrons paid \$100 each to attend the big fund-raiser which included dinner, dancing and a silent auction.

More on this next week.

### Clubwomen to meet

Marge Ducharme, R.N., of Orange Regional Medical Center, will be the guest speaker at the Sanford Women's Club meeting and luncheon Wednesday. She will speak on "Screen Management." Luncheon reservations are required through the telephone committee.

Pat Foster and Bonnie Logan are co-chairmen of the luncheon committee.

Happy New Year, Dear Readers. And special thanks to all of you who have shared your news with me to make this column possible. Without all of you, there would be no column. So, please continue during '88 to keep the column well and alive. Love 'ya.

## Hawkins

Continued from Page 48  
Olympic Youth and Education Program Committee.

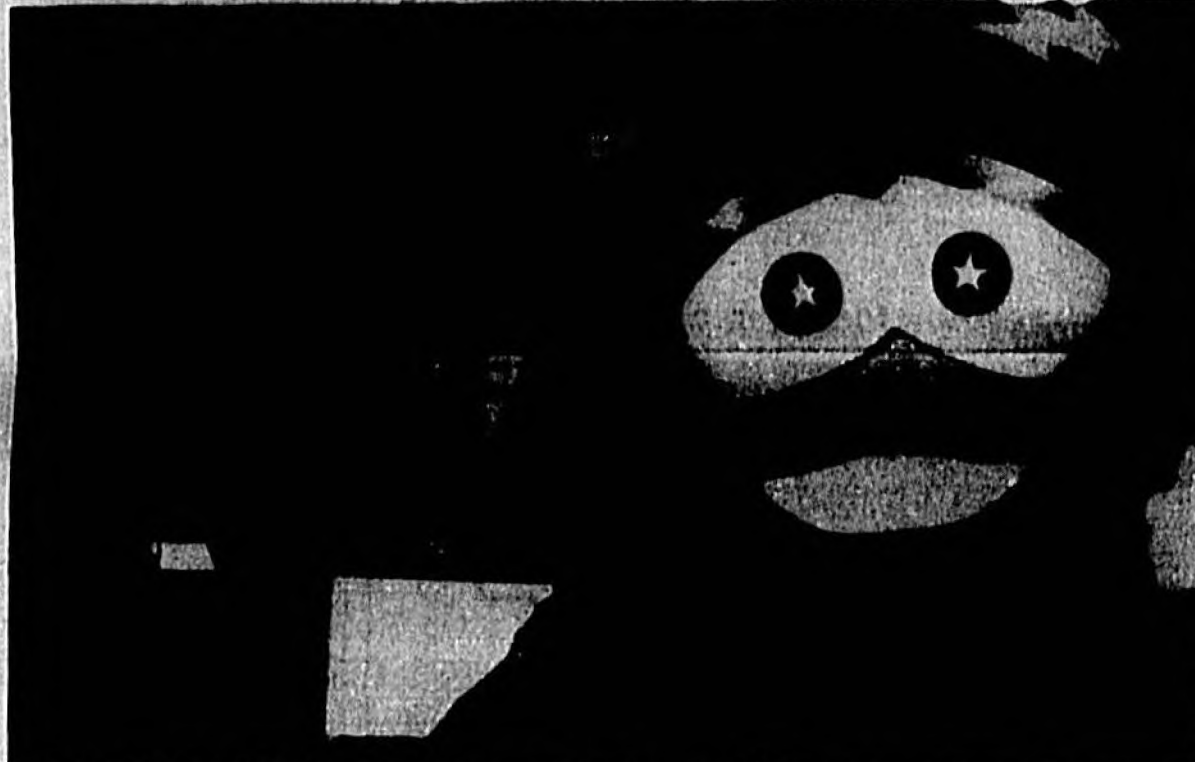
The World Congress Center was the setting for the 30 Georgia schools who were recognized for their innovative displays to educate youth in the history and spirit of the Olympic games and to make them aware of this and other countries' international relations.

Willie White, Gayle Anderson and Jan E. Smith, faculty and students of Sanford High School and the ever so capable administrators, students and teachers teamed with excitement at being chosen to compete and display their project. White accepted the award as coordinator of the event from Marilyn Arrington of the Atlanta Committee for the Olympic Games and Izzy the Mascot.

White gives special thanks to his mentors who gave him the incentive to become a first-class food connoisseur. When in Sanford, he selects and prepares a delicious meal for his family and friends. His culinary skills were recently shared with them while visiting for the holiday season. White is the son of Ruby White of Sanford and Willie Leo White of West Palm Beach.

### Holiday visitors

Visiting in the city during the holidays were former Sanfordites Thomas Wilson III, Mr. and Mrs. Furman Clark, Dr. Karen Thornton, Mr. and Mrs. Donald



Marilyn Arrington, Willie J. White, and "Izzy," the mascot for the 1988 Olympics in Atlanta.

Goodwine, Yvonne Adams and children, and Tracy Carr.

### Choir rehearsal

Every Tuesday evening at 7:30 p.m., the city of Sanford Martin Luther King Jr. Celebration Choir will rehearse at the St. John's Missionary Baptist Church, E. 10th Street and

Cypress Ave. All choir members, musicians of all churches are invited to join this city-wide choir that will participate in the MLK Jr. observance to be held in January. Florida Williams is director; Faye J. Williams, musician and Mary Whitehurst, director emerita.

### Happy New Year

To all of my readers — "May you be blessed with a happy and prosperous New Year!"

(Marva Hawkins is a Sanford Herald correspondent covering Sanford news. Phone: 588-6414.)

**ENGAGEMENT**

## Hanson-Mannion

SANFORD — Mrs. Gail Hanson of Sanford and Mr. Edward Hanson, Avon, N.Y., are announcing the engagement of their daughter, Julie Michelle, to Michael James Mannion Jr., son of Mrs. Sandra Martin of Winter Park and Mr. Michael Mannion Sr., Orlando.

Born in Rochester, N.Y., the bride-elect is the maternal granddaughter of the late Mr. Harry and Mrs. Marion Yeaton.

Ms. Hanson is a 1987 graduate of Seminole High School, Sanford where she participated in Tri-Hi-Y and the marching and concert band. She is a 1991 graduate of the University of Central Florida, Orlando where she received a bachelor's degree in radio and TV production.

She is currently employed by Amtrak Auto Train and Starlite Tutorial Academy, Sanford.

Her fiancé, born in Methuen, Mass., is a 1987 graduate of West Orange High School, Orlando. Mannion has served two



Julie Michelle Hanson, Michael James Mannion Jr.

years in the U.S. Navy on the M/V Enterprise. He is presently employed by T.G. Lee Dairy in Orlando.

The wedding will be an event of Oct. 14, 1995 at Lake Eola, Orlando.

Continued from Page 48

Christmas, providing them with gifts and gift certificates for Christmas.

On display at the Christmas party were the winners of the Lake Mary Woman's Club Arts and Crafts competition. The winners, who will be announced

at a later date, will go on to compete against other women's clubs in the area.

### Seniors begin work on quilt

The Lake Mary Seniors will begin working on a maple leaf

quilt Tuesday, Jan. 3. The seniors hope to have the quilt completed by the first of May. The quilt will then be raffled off, hopefully at Olde Lake Mary Days. If you would like to help work on the quilt, you can stop by the Frank Evans Center any time classes are in session. If you

prefer, you can pick up a block to work on at home.

The Frank Davis Center, closed since Dec. 23, will reopen Jan. 3. All classes will resume on Jan. 3.

Mary Rowell is a Sanford Herald correspondent covering the Lake Mary area. Phone: 281-1400.

## IN THE SERVICE

**JAMES E. COVINGTON** — Navy Lt. James H. Covington, son of James H. and Armilda M. Covington of 807 Rosalia Drive, Sanford, recently completed the Submarine Officers Advanced Course.

During the 23-week course, which is taught at Naval Submarine School, Groton, Conn., students prepare for increased responsibilities as department heads aboard Navy submarines. Areas of instruction include tactics, sonar, weapons, fire control, navigation and ship's operations.

The 1977 graduate of Seminole High School, Sanford joined the Navy in June 1980. Covington is a 1987 graduate of Florida State University, Tallahassee, with a bachelor of science degree and a 1994 graduate of the U.S. Naval Postgraduate School, Monterey, Calif.

with a master's degree.

**JOSEPH R. KURS** — FORT BRAGG, Fayetteville, N.C. — Joseph R. Kurs recently completed leadership training and evaluation at the U.S. Army cadet command ROT advanced camp.

The camp, normally attended by cadets between their third and fourth years of college, provides a thorough evaluation of a cadet's decision-making ability. Successful completion of the advanced camp and graduation from college results in a commission as a second lieutenant. Newly commissioned officers may serve on active duty, Army Reserve or National Guard.

The cadet is a student at the University of Central Florida, Orlando.

Kurs is the son of Nancy L.

Kurs of 1268 Marina Point, Casselberry.

He is a 1989 graduate of Lake Howell High School, Winter Park.

**TROY W. MANLOVE** — SHEPPARD AIR FORCE BASE, Wichita Falls, Texas — Air Force Airman Troy W. Manlove has graduated from the aircraft pneudraulic systems course here.

Students were taught the principles of operation, inspection, testing, and repair of pneudraulic and hydraulic units. Included were aircraft familiarization, ground safety practices, and the use of technical publications.

Manlove is the son of Bob R. and Barbara J. McNett of 543 Citrus Ave., Oviedo.

**STEPHEN M. WHITLEY** — FORT JACKSON, Columbia,

S.C. — Army Pvt. Stephen M. Whitley has completed basic training here.

Whitley is the son of Larry and Lis Whitley of 539 Enderby Road, Chuluota.

He is a 1992 graduate of Oviedo High School.

**DAVID L. FERRIS** — HUSTERHOEHE KASERNE, Pirmasens, Germany — Army Sgt. David L. Ferris has been decorated with the Army Commendation Medal.

The award is awarded to those individuals who demonstrate outstanding achievement or meritorious service in the performance of their duties on behalf of the Army.

Ferris, a transportation teamer, is the son of Milton and Carolyn Ferris of 103 Mayfair Circle, Sanford.

# Just for this one day, take charge of yourself

DEAR READERS: My New Year's column has become an annual tradition. These New Year's resolutions are based on the original credo of Al-Anon. I am using the theme with some variations of my own:

Just for today, I will live through this day only, and not set far-reaching goals to try to overcome all my problems at once. I know I can do something for 24 hours that would overwhelm me if I thought I had to keep it up for a lifetime.

Just for today, I will be happy. Abraham Lincoln said, "Most folks are about as happy as they make up their minds to be." He was right; I will not dwell on thoughts that depress me. I will chase them out of my mind and replace them with happy thoughts.

Just for today, I will adjust myself to what is. I will face reality. I will correct those things that I can correct, and accept those which I cannot.

Just for today, I will adjust myself to what is. I will face reality. I will correct those things that I can correct, and accept those which I cannot.

Just for today, I will improve my mind. I will not be a mental



ADVICE

ABIGAIL VAN BUREN

loafer. I will force myself to read something that requires effort, thought and concentration.

Just for today, I will do something positive to improve my health. If I'm a smoker, I'll make an honest effort to quit. If I'm overweight, I'll eat nothing I know to be fattening. And I will force myself to exercise - even if it's only walking around the block or using the stairs instead of the elevator.

Just for today, I'll do something I've been putting off for a long time. I'll finally write that letter, make that phone call, clean that closet, or straighten out those dresser drawers.

Just for today, before I speak I will ask myself, "Is it true? Is it kind?" and, if the answer to either of those questions is negative, I won't say it.

Just for today, I will make a conscious effort to be agreeable. I will look as good as I can, dress becomingly, talk softly, act courteously, and not interrupt when someone else is talking. Just for today, I'll not try to improve anybody except myself.

We know so much more about nutrition and how exercise and sensible living can extend life and make it more enjoyable, so just for today, I'll take good care of my body so I can celebrate many more happy New Years.

Just for today, I will have a program. I may not follow it exactly, but I will have it, thereby saving myself from two pests: hurry and decision.

Just for today, I will gather the courage to do what is right and take the responsibility for my own actions.

To one and all: a happy, healthy New Year! - LOVE, ABBY

P.S. God bless our men and women in uniform in every corner of the world where our flag is flying. And let us not forget those patriotic Americans who are serving their country in the Peace Corps, as well as those who have served and are now in veterans' hospitals and nursing homes.

## Longwood

Continued from Page 4B

blindness to achieve a greater degree of independence with the help of a specially trained canine friend. Call Patti Conklin at 834-2858.

Central Florida Society for Historical Preservation is mainly active in securing financial assistance for the preservation and renovation of the Bradlee-McIntyre House and the Inside-Outside House, both located in the historical district of Longwood. For further information, call John Blaine at 333-0920.

The Fred Astaire Dance Studio sponsors benefits for the Muscular Dystrophy Association throughout the year.

The Lakeville Pops featuring Music Orlando, held on Lake Brantley, is the result of a labor of love of the music lovers of the Sweetwater Episcopal Academy and the Episcopal Church of the Resurrection for the benefit of the Community Outreach Program. "Crafts in the Churchyard" is an arts and crafts show sponsored by the same organization prior to the concert.

Labortoma of Greater Seminole County may contact Anne Shea at 333-3043 for further information.

The League of Women Voters of Seminole County may call Deborah Caywell at 889-8888.

The Longwood Arts and Crafts Festival, the largest festival for craftsmen in the Central Florida region, is primarily sponsored by the Central Florida Society for Historical Preservation.

Longwood Civic League Women's Club is the custodian of one of the oldest, if not the oldest, buildings in Longwood. The group meets the second Tuesday of the month at 1 p.m. and is accepting new members. Call Caroline Blaine at 830-9450.

Longwood-Lake Mary Lions Club may contact Robert Benua, president, at 889-0841.

Longwood "Farmers' Market" is located in downtown Longwood every Saturday from 7 a.m. until 1 p.m.

The citizens of Longwood and Longwood Police Department sponsor "Night Moves," a nightclub located at 311 Dane Lane, for middle school and high school students on Friday nights, and a line dancing instructional and family fun night on Saturdays. The club has been a great success.

Longwood Police Explorers, sponsored by the Longwood police, have various posts and can be contacted by calling Investigator P. Robert Ledecsky at 333-3400; donations are always appreciated.

Longwood-Winter Springs Chamber of Commerce has merged with the Greater Seminole County Chamber of Commerce directed by Wanda Kelly at 834-4404.

Sertoma Club of Longwood, a service organization to further the advancement and educational goals of speech and hearing impaired children. Contact Gene Prester at 834-1234.

Babal Point Garden Club meets on the first Wednesday of each month at the Golf Brook Apartment Clubhouses, a social and service organization; contact 889-8852.

Sweetwater Oaks Garden Club is currently celebrating its 20th year and sponsors a junior garden club; contact 883-1132 for information.

Sweetwater Oaks Women's Club is a service organization sponsoring scholarships and supporting Loaves and Fishes, Project Graduation, Golden Triangle 4-H Club and other causes as they arise. Contact 883-8826.

Special Olympics are always in need of volunteers. Call Larry Levine 942-5278 or Lin Bennett at 283-8043.

Wekiva Hunt Club Association has various clubs and service groups for all needs and ages.

### Women's club holds party, fund-raiser

The Sweetwater Oaks Women's Club held its annual Christmas party at the Sweetwater Country Club which is one of their major fund-raisers of the year. Members pledged to support their scholarship award winners and also to support their generous donations to the Loaves and Fishes organization in Apopka and Project Graduation.

Prior to the luncheon, Darlene Hobeck conducted a tour through her beautifully, holiday-decorated home. The foyer featured a miniature village of days gone by with ice skaters on the pond and ski lift in the background, a park and water tower, airport complete with plane, church and a little schoolhouse. A cute little bear blowing bubbles in the Christmas tree, an elf laying on top of the refrigerator in the kitchen with Grandma Santa nearby with her cookbook and candy canes added to the festive



Liz Shayeesthpour, chairman of the Sweetwater Oaks Women's Club silent auction (from left); Betty Jean Cochran, club president; Kay Madd, secretary and vice president; and Joanne Terpening, treasurer, are ready for the club's silent auction.

most of the house. Mary DeVany also opened her home to the group which featured gorgeous wreaths on each of the outdoor windows, a beautiful walkway lined with tiny little lights and, of course, the inside of the home was filled with the spirit of the season. The most beautiful flower arrangements were displayed with such precision by the Greensplus, Inc. located at 704 W. State Road 458.

The afternoon luncheon was not just a social event as the crowd shopped for that special gift at the silent auction, chaired by Liz Shayeesthpour. The gifts were spectacular, featuring table linens, coffee urns, crystal serving pieces, restaurant donations and wonderful items of clothing from various stores on Park Avenue. It was a wonderful way to end the year in a spirit of giving, which is what this club is about.

### Cheerleaders help needy kids

The Lake Mary High School freshmen cheerleaders have a special sponsor this year. Her name is Camille McDougald and she knows the meaning of Christmas and planned to share it with her cheerleaders. She began the process in September by communicating the idea of the party for the preschoolers in the local Head Start program and planned the date, the time, the commitment and the fundraiser to pay for it.

In November, Mrs. McDougald and her cheerleaders had a car wash. Each student was responsible for selling 500 worth of car washes in exchange. They worked from 8 a.m. until 6 p.m. washing cars in one of the parking lots of the Albertsons supermarkets. Each of the students were given the name and age of one of the Head Start students and parents donated their time to take several of the girls shopping for their special child using the money from the car wash. They each had the same amount to spend on each child. Food was ordered from Albertsons and, again, the car wash money was used to pay for it. Jorry Shelley, a father of one of the cheerleaders, delivered the most authentic sounding "ho-ho-ho" in his red suit and black boots. The preschoolers

and their teachers, the cheerleaders and parents and Mrs. McDougald had a wonderful time and the spirit of Christmas was seen and felt in a little classroom at Altamonte Elementary.

The freshman cheerleaders are: Ashley Billings; Katie Bouchillion; Leslie Blomely; Rebecca Campbell; Crystal Dougherty; Melissa Grace; Kiden Koegel; Kelly Kosmac; Kristina Lundberg; Gail Joubran; Gwen Michalk; Pepper Monroe; Jen Reiner; Jennifer Shelly; Lisa Tango; Christina Vedner; Tamara Wood.

### Garden Club functions

The Sweetwater Oaks Garden Club will meet on Jan. 9, 1995 at 9:30 a.m. at Leaps and Bounds in Oak Grove Shoppes. Liz Ward will present a program on genealogy.

Sweetwater Oaks Garden Club will hold its annual card party-luncheon on Jan. 16, 1995 at 10 a.m. at the Sanlando Methodist Church. Door prizes will be drawn and a silent auction will be held. Contact Carole Gilbertson for ticket information at 889-9120.

### Yule program

The students at the Oak Tree Pre School delivered their Christmas program with the usual amount of enthusiasm from their delighted parents. Although not all the entrances, the words, the costumes, the smiles made it seem like a perfect performance.

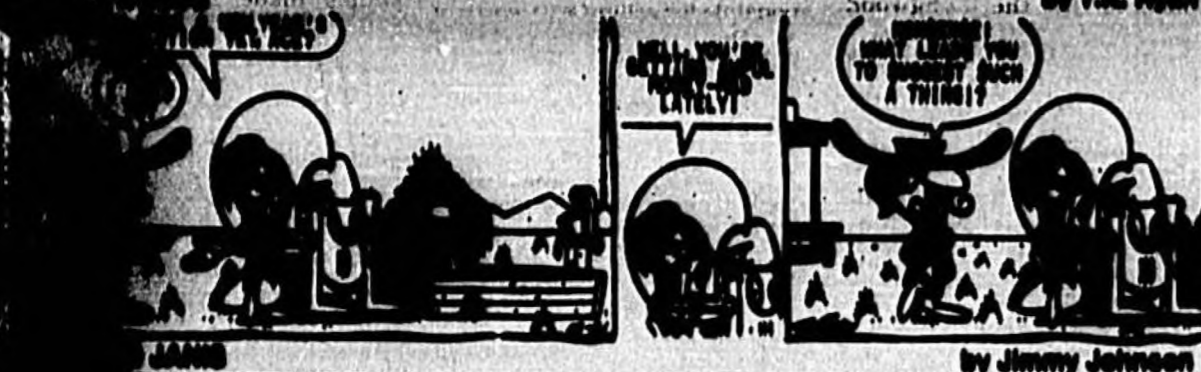
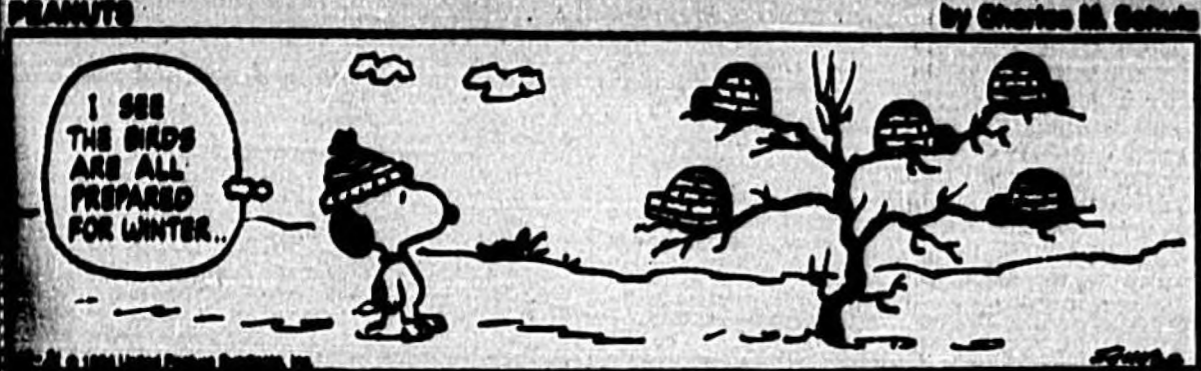
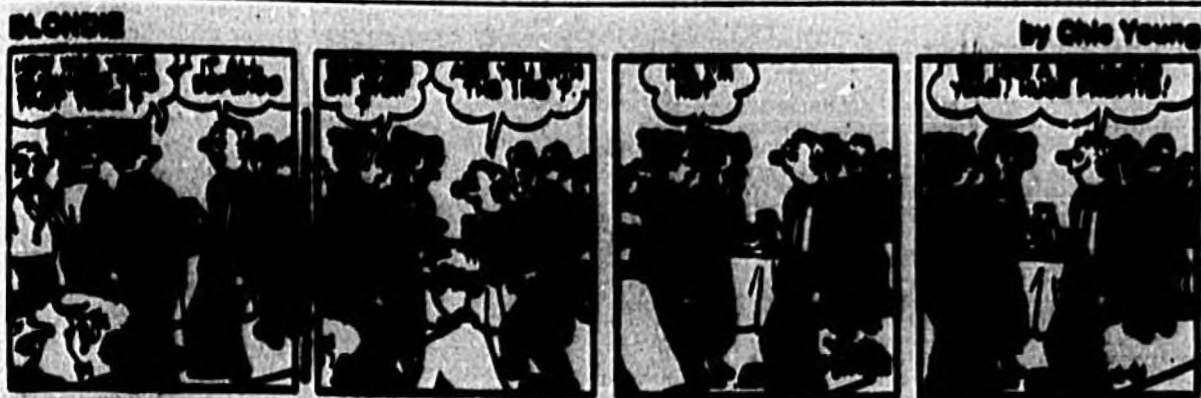
## SUNDAY'S TELEVISION

Table with columns for Time, Channel, Program Name, and Description. Lists various TV shows and their broadcast times across different channels.

Table with columns for Channel, Program Name, and Description. Lists specific TV programs and their broadcast details.

REGAL CINEMAS advertisement listing movie titles and showtimes for various theaters.

COUNTRY FOLK ART SHOW & SALE advertisement for a show at DAYTONA BEACH OCEAN CENTER, listing items for sale and contact information.



**By Service Beds Good YOUR HORIZON**  
Jan. 1, 1966

Your greatest successes in the new year will come from situations in which you can act independently. Conversely, partnership arrangements might seem unpleasant and sluggish.

**CAPRICORN (Dec. 22-Jan. 19)** In the year ahead, projects you mastermind or endeavor you directly control could turn out quite successfully. Do not be afraid of new responsibilities. Capricorn, treat yourself to a birthday gift. Send for your Astro-Graph predictions for the year ahead by mailing \$1.25 to Astro-Graph, c/o this newspaper, P.O. Box 4488, New York, NY 10163. Be sure to state your zodiac sign.

**AGNARUS (Jan. 20-Feb. 19)** Your chart indicates an alliance might be formed in the new year with a well-informed leader. This individual could supply you with valuable information.

**PISCES (Feb. 20-March 20)** Organized activities could hold special promise for you in the year ahead. Benefits may develop through close contacts and associates.

**ARIES (March 21-April 19)** Watch for positive new career developments in the new year. A meeting of the minds with someone at the top is indicated.

**TAUROS (April 20-May 20)** Your knowledge, experience and expertise can be used advantageously in the year ahead. Today marks a period of new beginnings.

**GEMINI (May 21-June 20)** A joint venture you're presently involved in or soon to be involved in could be more significant than you realize.

**CANCER (June 21-July 22)** In the year ahead, it looks like you may become involved in two unrelated partnerships. Both should turn out to your liking.

**LEO (July 23-Aug. 22)** Elevate your sights in the new year. Pay special attention to your objectives that are the most ambitious.

**Virgo (Aug. 23-Sept. 22)** If your past efforts have been good, this is the year to apprise your superiors of your recent accomplishments.

**LIBRA (Sept. 23-Oct. 22)** Cultivate a relationship with two new friends today. There is a basis here for a mutual admiration society.

**SCORPIO (Oct. 24-Nov. 22)** There might soon be some favorable shifts in domestic conditions that prove beneficial to you and to your family life as a whole.

**SAGITTARIUS (Nov. 23-Dec. 22)** You are entering a new cycle that could prove to be materially beneficial. Your earnings will increase and you may even collect on an important old debt.

© Copyright 1964 NEWSPAPER ENTERPRISE ASSN.

**ACROSS**

1 Novel odd.  
4 Jovial  
6 Joke up and down  
10 Normal  
14 American ex-  
16 Two legal  
18 Human  
19  
17  
20  
21  
22  
23  
24  
25

**DOWN**

1  
2  
3  
4  
5  
6  
7  
8  
9  
10  
11  
12  
13  
14  
15  
16  
17  
18  
19  
20  
21  
22  
23  
24  
25

**Answers to Previous Puzzles**

1. ...  
2. ...  
3. ...  
4. ...  
5. ...  
6. ...  
7. ...  
8. ...  
9. ...  
10. ...  
11. ...  
12. ...  
13. ...  
14. ...  
15. ...  
16. ...  
17. ...  
18. ...  
19. ...  
20. ...  
21. ...  
22. ...  
23. ...  
24. ...  
25. ...

**By Service Beds Good YOUR HORIZON**  
Jan. 1, 1966

Your chart indicates that you are likely to be something of a free spirit in the year ahead. As you expand your horizon, prompted by your new sense of adventure, a number of happy developments could occur.

**CAPRICORN (Dec. 22-Jan. 19)** A current involvement has greater potential than you realize. Take time today to carefully assess what it has to offer. Major changes are ahead for Capricorn in the coming year. Send for your Astro-Graph predictions today. Mail \$1.25 to Astro-Graph, c/o this newspaper, P.O. Box 4488, New York, NY 10163. Be sure to state your zodiac sign.

**AGNARUS (Jan. 20-Feb. 19)** Business problems can be resolved in a convivial environment today. Make arrangements to negotiate over a pleasant lunch or dinner.

**PISCES (Feb. 20-March 20)** Today a very pleasant surprise is in store for you. Someone you thought distasteful is actually your staunch ally.

**ARIES (March 21-April 19)** Associates are apt to respect your views today. They will sense that you have extraordinary foresight going for you.

**TAUROS (April 20-May 20)** Think big today in an endeavor with a partner. Expanding this involvement could benefit both of you.

**GEMINI (May 21-June 20)** The conclusions you arrive at today are apt to be on target. Your judgment is quite keen at analyzing relationships.

**CANCER (June 21-July 22)** Your greatest asset today could be your ability to transform the obsolete into something useful. Use this skill as it is needed.

**LEO (July 23-Aug. 22)** Friends who usually support you will be even more helpful today, so don't hesitate to call upon them.

**Virgo (Aug. 23-Sept. 22)** If you need assistance, remember to thank co-workers or persons performing some type of service for you today. The desire to work hard is fueled by acknowledgments of a job well done.

**LIBRA (Sept. 23-Oct. 22)** You will be very perceptive today. Because you can absorb useful information at a remarkable speed, you will be adept at picking up tips while socializing.

**SCORPIO (Oct. 24-Nov. 22)** Today you could unusually skillful in managing the affairs of those you protect. Your efforts will prove beneficial to them as well as yourself.

**SAGITTARIUS (Nov. 23-Dec. 22)** Restraints that have been holding you back should begin to loosen today. This might be due to new associates.

© Copyright 1964 NEWSPAPER ENTERPRISE ASSN.

**By Phillip Alder**

In his poem "New Year's Day," Robert Burns wrote, "This day Time winds th' exhausted chain. To run the twelvemonth's length again." Well, I don't have a column tomorrow, so today will have to do. And to help keep you awake for the evening's festivities ahead, here is a difficult declarer-play problem.

How should South plan the play in four spades? West leads the club six, evidently a singleton.

Declarer won the first trick with dummy's club ace, unblocked the spade ace, ruffed a diamond to hand and continued with the spade seven. However, West went in with the king and led a heart to his partner's ace. East cashed the club king, then gave his partner a club ruff to defeat the contract.

"I should have stayed in bed this morning," grumbled South. "You were a trifle unlucky," agreed North.

"A trifle!" exclaimed South. "And West defended well," continued North. "But there is a technique worth trying when a ruff is threatened. At trick two, lead a diamond honor from the dummy. Let's assume East covers with the ace. You ruff, play a spade to dummy's ace and lead the second diamond honor from the dummy. When East cannot cover, discard your heart king. The communication between the defenders has been cut and West never gets his club ruff."

"And if East plays low at trick two, I discard my heart king," said South. "Yes, of course. I should have thought of it."

I wish all my readers a healthy and successful 1966.

**WEST** 15-17-4  
♠A  
♥KQJ  
♦KQJ  
♣A

**EAST** 10-7-4  
♠KQ  
♥A  
♦A  
♣KQ

**SOUTH** 10-8-7-5-3  
♠K  
♥...  
♦J75  
♣...

Vulnerable: North-South  
Dealer: North

South West North East  
♠ Pass 10 Pass Pass  
♥ Pass 10 Pass Pass  
♦ Opening lead: ♠6

© Copyright 1964 NEWSPAPER ENTERPRISE ASSN.

**By Leonard Starr**

LOOK AT THIS COMIC. IT'S DEVELOPING... IT'S CALLED 'THE OUT SIDE'... IT'S GROWING NEWS AND FUNNIES AND COME...

MONEY, IT JUST LOOKS LIKE A CRICKET ATTEMPT TO BE AN 'THE OUT SIDE'... IT'S GROWING NEWS AND FUNNIES AND COME...

OH, OH... HOW ABOUT THIS ONE... I CALL IT 'BROOD COUNTY'...

THERE'S A BLAZING BIRD OF THE OLD 'BROOD COUNTY'... YOU KNOW HAVE A PENGUIN CHARACTER?

WELL, LOOK CLOSELY... IT'S A PUPPY...

... I WISH ALL MY READERS A HEALTHY AND SUCCESSFUL 1966.

Legal Notice

NOTICE OF ACTION IN EMINENT DOMAIN IN THE CIRCUIT COURT OF THE EIGHTEENTH JUDICIAL CIRCUIT, IN AND FOR SEMINOLE COUNTY, FLORIDA

SEMINOLE COUNTY, a political subdivision of the State of Florida, Petitioner. ALBERTSON'S INC., a Delaware Corporation; GORDON H. HARRIS, as Trustee; SANLAND UTILITIES CORPORATION, a Florida Corporation; ONE HAMILTON ASSOCIATES, a Massachusetts Limited Partnership; D/S/A, One Hamilton Associates, L.P., a Massachusetts Limited Partnership; ALBERTSON PROPERTIES, INC., a Massachusetts Corporation; ALBERTSON PROPERTIES, INC., a Massachusetts Corporation; BROADWAY BANK OF BOSTON, N.A. and C.W. CASHMAN, as Trustees; FLORIDA POWER CORPORATION, a Florida Corporation; LIFE INSURANCE COMPANY OF GEORGIA, a Georgia Corporation; NORTH ORLANDO ASSOCIATES, L.P., a Florida Limited Partnership; J.C. PENNEY COMPANY, INC., a Florida Corporation; CROWN POINT CONSTRUCTION CO., a Dissolved Florida Corporation; SABAL POINT PROPERTIES, INC., a Dissolved Florida Corporation; SABAL POINT DEVELOPMENT CO., INC., a Florida Corporation; Individually and Successor by merger to Sabal Point Properties, Inc., a Dissolved Florida Corporation; SABAL CENTER CORPORATION, a Florida Corporation; RAY VALDES as Tax Collector of Seminole County, Florida; and the unknown spouses of the above, if any; their heirs, devisees, assignees, grantees, creditors, issue, executors, administrators, mortgagees, lienholders, judgment creditors, beneficiaries, persons in possession and any and all other persons having or claiming to have any right, title or interest by, through, under or against the above named Defendants, or otherwise claiming any right, title, or interest in the real property described in this action.

Defendants. TO THOSE ABOVE NAMED DEFENDANTS AND TO ALL PARTIES CLAIMING INTEREST BY THROUGH, UNDER OR AGAINST THE NAMED DEFENDANTS; AND TO ALL PARTIES HAVING OR CLAIMING TO HAVE ANY RIGHT, TITLE OR INTEREST IN THE PROPERTY DESCRIBED BELOW. An Eminent Domain Petition, together with its Declaration of Taking has been filed in the above-styled court to acquire certain property interests in Seminole County, Florida, described as follows:

PARCEL NO. 136 MONTGOMERY ROAD FEE SIMPLE THAT PORTION OF THAT CERTAIN TRACT OF LAND DESCRIBED AS "EXHIBIT A" IN O.R. BOOK 1372, PAGE 1837, LESS THAT CERTAIN TRACT OF LAND DESCRIBED AS "EXHIBIT A" IN O.R. BOOK 1372, PAGE 1837, AND LESS THAT CERTAIN TRACT OF LAND DESCRIBED AS "EXHIBIT A" IN O.R. BOOK 1372, PAGE 456, ALL RECORDED IN THE PUBLIC RECORDS OF SEMINOLE COUNTY, FLORIDA, BEING MORE PARTICULARLY DESCRIBED AS FOLLOWS:

COMMENCE AT THE NORTHEAST CORNER OF THE SOUTHWEST QUARTER OF SECTION 3, TOWNSHIP 21 SOUTH, RANGE 29 EAST, SEMINOLE COUNTY, FLORIDA, RUN 500'16'13" W ALONG THE EAST LINE OF SAID SW 1/4, 1275.19 FEET TO THE NORTH RIGHT-OF-WAY LINE OF STATE ROAD 434; THENCE N89°22'03"W, 94.00 FEET TO THE WEST RIGHT-OF-WAY LINE OF WERIVA SPRINGS ROAD RELOCATION; THENCE ALONG SAID WEST RIGHT-OF-WAY LINE 900'16'13" E, 300.00 FEET; THENCE LEAVING SAID RIGHT-OF-WAY LINE, N89°22'03"W, 24.00 FEET TO THE POINT OF BEGINNING OF A CURVE; THENCE ALONG THE ARC OF SAID CURVE, HAVING A CENTRAL ANGLE OF 09°31'36", A RADIUS OF 464.87 FEET AND A CHORD BEARING OF N06°16'31"W, FOR A DISTANCE OF 80.00 FEET; THENCE S78°47'21"W, 30.00 FEET TO A POINT ON A NON-TANGENT CURVE, CONCAVE SOUTHWESTERLY; THENCE SOUTHWESTERLY ALONG THE ARC OF SAID CURVE, HAVING A CENTRAL ANGLE OF 09°31'36", A RADIUS OF 434.07 FEET AND A CHORD BEARING OF S96°16'13"W, FOR A DISTANCE OF 74.84 FEET TO A POINT OF TANGENT; THENCE S01°21'02"E, 38.07 FEET; THENCE N88°38'58"E, 34.03 FEET; THENCE S00°16'03"W, 61.03 FEET; THENCE S89°22'03"W, 83.33 FEET TO THE POINT OF BEGINNING OF THIS DESCRIPTION.

CONTAINING 5,041.00 SQUARE FEET, TOGETHER WITH

PARCEL NO. 736 MONTGOMERY ROAD TEMPORARY CONSTRUCTION EASEMENT THAT PORTION OF THAT CERTAIN TRACT OF LAND DESCRIBED IN O.R. BOOK 1371, PAGE 1837, RECORDED IN THE PUBLIC RECORDS OF SEMINOLE COUNTY, FLORIDA, BEING MORE PARTICULARLY DESCRIBED AS FOLLOWS:

COMMENCE AT THE NORTHEAST CORNER OF THE SOUTHWEST QUARTER OF SECTION 3, TOWNSHIP 21 SOUTH, RANGE 29 EAST, SEMINOLE COUNTY, FLORIDA, RUN 500'16'13" W ALONG THE EAST LINE OF SAID SW 1/4, 1275.19 FEET TO THE NORTH RIGHT-OF-WAY LINE OF STATE ROAD 434; THENCE N89°22'03"W, 183.33 FEET TO THE POINT OF BEGINNING OF A CURVE; THENCE ALONG THE ARC OF SAID CURVE, HAVING A CENTRAL ANGLE OF 09°31'36", A RADIUS OF 464.87 FEET AND A CHORD BEARING OF N06°16'31"W, FOR A DISTANCE OF 80.00 FEET; THENCE S78°47'21"W, 30.00 FEET TO A POINT ON A NON-TANGENT CURVE, CONCAVE SOUTHWESTERLY; THENCE SOUTHWESTERLY ALONG THE ARC OF SAID CURVE, HAVING A CENTRAL ANGLE OF 09°31'36", A RADIUS OF 434.07 FEET AND A CHORD BEARING OF S96°16'13"W, FOR A DISTANCE OF 74.84 FEET TO A POINT OF TANGENT; THENCE S01°21'02"E, 38.07 FEET; THENCE N88°38'58"E, 34.03 FEET; THENCE S00°16'03"W, 61.03 FEET; THENCE S89°22'03"W, 83.33 FEET TO THE POINT OF BEGINNING OF THIS DESCRIPTION.

CONTAINING 1,756.88 SQUARE FEET.

PARCEL NO. 137 MONTGOMERY ROAD FEE SIMPLE THAT PORTION OF THAT CERTAIN TRACT OF LAND DESCRIBED IN O.R. BOOK 1372, PAGE 1837, RECORDED IN THE PUBLIC RECORDS OF SEMINOLE COUNTY, FLORIDA, BEING MORE PARTICULARLY DESCRIBED AS FOLLOWS:

COMMENCE AT THE NORTHEAST CORNER OF THE SOUTHWEST QUARTER OF SECTION 3, TOWNSHIP 21 SOUTH, RANGE 29 EAST, SEMINOLE COUNTY, FLORIDA, RUN 500'16'13" W ALONG THE EAST LINE OF SAID SW 1/4, 1275.19 FEET TO THE NORTH RIGHT-OF-WAY LINE OF STATE ROAD 434; THENCE N89°22'03"W, 94.00 FEET TO THE WEST RIGHT-OF-WAY LINE OF WERIVA SPRINGS ROAD RELOCATION; THENCE ALONG SAID WEST RIGHT-OF-WAY LINE 900'16'13" E, 300.00 FEET; THENCE LEAVING SAID RIGHT-OF-WAY LINE, N89°22'03"W, 24.00 FEET TO THE POINT OF BEGINNING OF A CURVE; THENCE ALONG THE ARC OF SAID CURVE, HAVING A CENTRAL ANGLE OF 09°31'36", A RADIUS OF 464.87 FEET AND A CHORD BEARING OF N06°16'31"W, FOR A DISTANCE OF 80.00 FEET; THENCE S78°47'21"W, 30.00 FEET TO A POINT ON A NON-TANGENT CURVE, CONCAVE SOUTHWESTERLY; THENCE SOUTHWESTERLY ALONG THE ARC OF SAID CURVE, HAVING A CENTRAL ANGLE OF 09°31'36", A RADIUS OF 434.07 FEET AND A CHORD BEARING OF S96°16'13"W, FOR A DISTANCE OF 74.84 FEET TO A POINT OF TANGENT; THENCE S01°21'02"E, 38.07 FEET; THENCE N88°38'58"E, 34.03 FEET; THENCE S00°16'03"W, 61.03 FEET; THENCE S89°22'03"W, 83.33 FEET TO THE POINT OF BEGINNING OF THIS DESCRIPTION.

CONTAINING 918.87 SQUARE FEET.

PARCEL NO. 141 MONTGOMERY ROAD FEE SIMPLE THAT PORTION OF THAT CERTAIN TRACT OF LAND DESCRIBED IN O.R. BOOK 1486, PAGE 1447, AND O.R. BOOK 1474, PAGE 247, ALL IN THE PUBLIC RECORDS OF SEMINOLE COUNTY, FLORIDA, BEING MORE PARTICULARLY DESCRIBED AS FOLLOWS:

COMMENCE AT THE NORTHEAST CORNER OF THE SOUTHWEST QUARTER OF SECTION 3, TOWNSHIP 21 SOUTH, RANGE 29 EAST, SEMINOLE COUNTY, FLORIDA, RUN 500'16'13" W ALONG THE EAST LINE OF SAID SW 1/4, 1275.19 FEET TO THE NORTH RIGHT-OF-WAY LINE OF STATE ROAD 434; THENCE N89°22'03"W, 94.00 FEET TO THE WEST RIGHT-OF-WAY LINE OF WERIVA SPRINGS ROAD RELOCATION; THENCE ALONG SAID WEST RIGHT-OF-WAY LINE 900'16'13" E, 300.00 FEET; THENCE LEAVING SAID RIGHT-OF-WAY LINE, N89°22'03"W, 24.00 FEET TO THE POINT OF BEGINNING OF A CURVE; THENCE ALONG THE ARC OF SAID CURVE, HAVING A CENTRAL ANGLE OF 09°31'36", A RADIUS OF 464.87 FEET AND A CHORD BEARING OF N06°16'31"W, FOR A DISTANCE OF 80.00 FEET; THENCE S78°47'21"W, 30.00 FEET TO A POINT ON A NON-TANGENT CURVE, CONCAVE SOUTHWESTERLY; THENCE SOUTHWESTERLY ALONG THE ARC OF SAID CURVE, HAVING A CENTRAL ANGLE OF 09°31'36", A RADIUS OF 434.07 FEET AND A CHORD BEARING OF S96°16'13"W, FOR A DISTANCE OF 74.84 FEET TO A POINT OF TANGENT; THENCE S01°21'02"E, 38.07 FEET; THENCE N88°38'58"E, 34.03 FEET; THENCE S00°16'03"W, 61.03 FEET; THENCE S89°22'03"W, 83.33 FEET TO THE POINT OF BEGINNING OF THIS DESCRIPTION.

CONTAINING 328.53 SQUARE FEET, TOGETHER WITH

PARCEL NO. 741 MONTGOMERY ROAD TEMPORARY CONSTRUCTION EASEMENT THAT PORTION OF THAT CERTAIN TRACT OF LAND DESCRIBED IN O.R. BOOK 1486, PAGE 1447, AND O.R. BOOK 1474, PAGE 247, ALL IN THE PUBLIC RECORDS OF SEMINOLE COUNTY, FLORIDA, BEING MORE PARTICULARLY DESCRIBED AS FOLLOWS:

COMMENCE AT THE NORTHEAST CORNER OF THE SOUTHWEST QUARTER OF SECTION 3, TOWNSHIP 21 SOUTH, RANGE 29 EAST, SEMINOLE COUNTY, FLORIDA, RUN 500'16'13" W ALONG THE EAST LINE OF SAID SW 1/4, 1275.19 FEET TO THE NORTH RIGHT-OF-WAY LINE OF STATE ROAD 434; THENCE N89°22'03"W, 94.00 FEET TO THE WEST RIGHT-OF-WAY LINE OF WERIVA SPRINGS ROAD AND THE SOUTHWESTERLY CORNER OF SAID TRACT; THENCE SOUTHWESTERLY ALONG SAID RIGHT-OF-WAY LINE, ALONG A CURVE CONCAVE SOUTHWESTERLY, HAVING A CENTRAL ANGLE OF 10°39'46", A RADIUS OF 883.90 FEET AND A CHORD BEARING OF S69°27'15"W, FOR A DISTANCE OF 108.31 FEET TO THE POINT OF BEGINNING OF THIS DESCRIPTION; THENCE S64°07'30"W, 40.36 FEET; THENCE LEAVING SAID RIGHT-OF-WAY LINE, N39°11'40"E, 42.93 FEET; THENCE N88°11'40"E, 40.00 FEET; THENCE

WEST RIGHT-OF-WAY LINE, N00°16'13"E, 300.00 FEET, TO THE POINT OF BEGINNING FOR THIS DESCRIPTION; THENCE CONTINUE ALONG SAID WEST RIGHT-OF-WAY LINE, N00°16'13"E, 50.92 FEET TO A POINT OF CURVATURE OF A CURVE CONCAVE TO THE SOUTHWEST; THENCE SOUTHWESTERLY ALONG THE ARC OF SAID CURVE, HAVING A CENTRAL ANGLE OF 44°24'40", A RADIUS OF 498.00 FEET AND A CHORD BEARING OF N21°56'10"W, FOR A DISTANCE OF 186.03 FEET; THENCE LEAVING SAID WEST RIGHT-OF-WAY LINE, S47°38'00"W, 13.13 FEET TO A POINT ON A NON-TANGENT CURVE, CONCAVE SOUTHWESTERLY; THENCE SOUTHWESTERLY ALONG THE ARC OF SAID CURVE, HAVING A CENTRAL ANGLE OF 19°41'59", A RADIUS OF 484.52 FEET AND A CHORD BEARING OF S32°22'30"E, FOR A DISTANCE OF 168.47 FEET TO A POINT OF COMPOUND CURVATURE, CONCAVE SOUTHWESTERLY; THENCE SOUTHWESTERLY ALONG THE ARC OF SAID CURVE, HAVING A CENTRAL ANGLE OF 21°10'58", A RADIUS OF 464.87 FEET AND A CHORD BEARING OF S11°58'30"E, FOR A DISTANCE OF 171.86 FEET TO A POINT OF TANGENT; THENCE S01°21'02"E, 83.92 FEET; THENCE S89°22'03"W, 34.03 FEET TO THE SAID WEST RIGHT-OF-WAY LINE OF WERIVA SPRINGS ROAD RELOCATION AND THE POINT OF BEGINNING OF THIS DESCRIPTION.

CONTAINING 8,478.69 SQUARE FEET, TOGETHER WITH

PARCEL NO. 737B MONTGOMERY ROAD TEMPORARY CONSTRUCTION EASEMENT

THAT PORTION OF THAT CERTAIN TRACT OF LAND DESCRIBED IN O.R. BOOK 1316, PAGES 1768 AND 1772, RECORDED IN THE PUBLIC RECORDS OF SEMINOLE COUNTY, FLORIDA, BEING MORE PARTICULARLY DESCRIBED AS FOLLOWS:

COMMENCE AT THE NORTHEAST CORNER OF THE SOUTHWEST QUARTER OF SECTION 3, TOWNSHIP 21 SOUTH, RANGE 29 EAST, SEMINOLE COUNTY, FLORIDA, RUN 500'16'13" W ALONG THE EAST LINE OF SAID SW 1/4, 1275.19 FEET TO THE NORTH RIGHT-OF-WAY LINE OF STATE ROAD 434; THENCE N89°22'03"W, 94.00 FEET TO THE WEST RIGHT-OF-WAY LINE OF WERIVA SPRINGS ROAD RELOCATION; THENCE ALONG SAID WEST RIGHT-OF-WAY LINE 900'16'13" E, 300.00 FEET; THENCE LEAVING SAID RIGHT-OF-WAY LINE, N89°22'03"W, 24.00 FEET TO THE POINT OF BEGINNING OF A CURVE; THENCE ALONG THE ARC OF SAID CURVE, HAVING A CENTRAL ANGLE OF 09°31'36", A RADIUS OF 464.87 FEET AND A CHORD BEARING OF N06°16'31"W, FOR A DISTANCE OF 80.00 FEET; THENCE S78°47'21"W, 30.00 FEET TO A POINT ON A NON-TANGENT CURVE, CONCAVE SOUTHWESTERLY; THENCE SOUTHWESTERLY ALONG THE ARC OF SAID CURVE, HAVING A CENTRAL ANGLE OF 09°31'36", A RADIUS OF 434.07 FEET AND A CHORD BEARING OF S96°16'13"W, FOR A DISTANCE OF 74.84 FEET TO A POINT OF TANGENT; THENCE S01°21'02"E, 38.07 FEET; THENCE N88°38'58"E, 34.03 FEET; THENCE S00°16'03"W, 61.03 FEET; THENCE S89°22'03"W, 83.33 FEET TO THE POINT OF BEGINNING OF THIS DESCRIPTION.

CONTAINING 3,372.12 SQUARE FEET, AND

PARCEL NO. 737B MONTGOMERY ROAD TEMPORARY CONSTRUCTION EASEMENT THAT PORTION OF THAT CERTAIN TRACT OF LAND DESCRIBED IN O.R. BOOK 1316, PAGES 1768 AND 1772, RECORDED IN THE PUBLIC RECORDS OF SEMINOLE COUNTY, FLORIDA, BEING MORE PARTICULARLY DESCRIBED AS FOLLOWS:

COMMENCE AT THE NORTHEAST CORNER OF THE SOUTHWEST QUARTER OF SECTION 3, TOWNSHIP 21 SOUTH, RANGE 29 EAST, SEMINOLE COUNTY, FLORIDA, RUN 500'16'13" W ALONG THE EAST LINE OF SAID SW 1/4, 1275.19 FEET TO THE NORTH RIGHT-OF-WAY LINE OF STATE ROAD 434; THENCE N89°22'03"W, 94.00 FEET TO THE WEST RIGHT-OF-WAY LINE OF WERIVA SPRINGS ROAD RELOCATION; THENCE ALONG SAID WEST RIGHT-OF-WAY LINE 900'16'13" E, 300.00 FEET; THENCE LEAVING SAID RIGHT-OF-WAY LINE, N89°22'03"W, 24.00 FEET TO THE POINT OF BEGINNING OF A CURVE; THENCE ALONG THE ARC OF SAID CURVE, HAVING A CENTRAL ANGLE OF 44°24'40", A RADIUS OF 498.00 FEET AND A CHORD BEARING OF N21°56'10"W, FOR A DISTANCE OF 186.03 FEET; THENCE LEAVING SAID WEST RIGHT-OF-WAY LINE, S47°38'00"W, 13.13 FEET TO A POINT ON A NON-TANGENT CURVE, CONCAVE SOUTHWESTERLY; THENCE SOUTHWESTERLY ALONG THE ARC OF SAID CURVE, HAVING A CENTRAL ANGLE OF 19°41'59", A RADIUS OF 484.52 FEET AND A CHORD BEARING OF S32°22'30"E, FOR A DISTANCE OF 168.47 FEET TO A POINT OF COMPOUND CURVATURE, CONCAVE SOUTHWESTERLY; THENCE SOUTHWESTERLY ALONG THE ARC OF SAID CURVE, HAVING A CENTRAL ANGLE OF 21°10'58", A RADIUS OF 464.87 FEET AND A CHORD BEARING OF S11°58'30"E, FOR A DISTANCE OF 171.86 FEET TO A POINT OF TANGENT; THENCE S01°21'02"E, 83.92 FEET; THENCE S89°22'03"W, 34.03 FEET TO THE SAID WEST RIGHT-OF-WAY LINE OF WERIVA SPRINGS ROAD RELOCATION; THENCE ALONG SAID WEST RIGHT-OF-WAY LINE 900'16'13" E, 300.00 FEET; THENCE LEAVING SAID RIGHT-OF-WAY LINE, N89°22'03"W, 24.00 FEET TO THE POINT OF BEGINNING OF THIS DESCRIPTION.

CONTAINING 918.87 SQUARE FEET.

PARCEL NO. 141 MONTGOMERY ROAD FEE SIMPLE THAT PORTION OF THAT CERTAIN TRACT OF LAND DESCRIBED IN O.R. BOOK 1486, PAGE 1447, AND O.R. BOOK 1474, PAGE 247, ALL IN THE PUBLIC RECORDS OF SEMINOLE COUNTY, FLORIDA, BEING MORE PARTICULARLY DESCRIBED AS FOLLOWS:

COMMENCE AT THE NORTHEAST CORNER OF THE SOUTHWEST QUARTER OF SECTION 3, TOWNSHIP 21 SOUTH, RANGE 29 EAST, SEMINOLE COUNTY, FLORIDA, RUN 500'16'13" W ALONG THE EAST LINE OF SAID SW 1/4, 1275.19 FEET TO THE NORTH RIGHT-OF-WAY LINE OF STATE ROAD 434; THENCE N89°22'03"W, 94.00 FEET TO THE WEST RIGHT-OF-WAY LINE OF WERIVA SPRINGS ROAD AND THE SOUTHWESTERLY CORNER OF SAID TRACT; THENCE SOUTHWESTERLY ALONG SAID RIGHT-OF-WAY LINE, ALONG A CURVE CONCAVE SOUTHWESTERLY, HAVING A CENTRAL ANGLE OF 10°39'46", A RADIUS OF 883.90 FEET AND A CHORD BEARING OF S69°27'15"W, FOR A DISTANCE OF 108.31 FEET TO THE POINT OF BEGINNING OF THIS DESCRIPTION; THENCE S64°07'30"W, 40.36 FEET; THENCE LEAVING SAID RIGHT-OF-WAY LINE, N39°11'40"E, 42.93 FEET; THENCE N88°11'40"E, 40.00 FEET; THENCE

CONTAINING 328.53 SQUARE FEET, TOGETHER WITH

PARCEL NO. 741 MONTGOMERY ROAD TEMPORARY CONSTRUCTION EASEMENT THAT PORTION OF THAT CERTAIN TRACT OF LAND DESCRIBED IN O.R. BOOK 1486, PAGE 1447, AND O.R. BOOK 1474, PAGE 247, ALL IN THE PUBLIC RECORDS OF SEMINOLE COUNTY, FLORIDA, BEING MORE PARTICULARLY DESCRIBED AS FOLLOWS:

COMMENCE AT THE NORTHEAST CORNER OF THE SOUTHWEST QUARTER OF SECTION 3, TOWNSHIP 21 SOUTH, RANGE 29 EAST, SEMINOLE COUNTY, FLORIDA, RUN 500'16'13" W ALONG THE EAST LINE OF SAID SW 1/4, 1275.19 FEET TO THE NORTH RIGHT-OF-WAY LINE OF STATE ROAD 434; THENCE N89°22'03"W, 94.00 FEET TO THE WEST RIGHT-OF-WAY LINE OF WERIVA SPRINGS ROAD AND THE SOUTHWESTERLY CORNER OF SAID TRACT; THENCE SOUTHWESTERLY ALONG SAID RIGHT-OF-WAY LINE, ALONG A CURVE CONCAVE SOUTHWESTERLY, HAVING A CENTRAL ANGLE OF 10°39'46", A RADIUS OF 883.90 FEET AND A CHORD BEARING OF S69°27'15"W, FOR A DISTANCE OF 108.31 FEET TO THE POINT OF BEGINNING OF THIS DESCRIPTION; THENCE S64°07'30"W, 40.36 FEET; THENCE LEAVING SAID RIGHT-OF-WAY LINE, N39°11'40"E, 42.93 FEET; THENCE N88°11'40"E, 40.00 FEET; THENCE

850°48'33"E, 42.67 FEET TO A POINT ON A NON-TANGENT CURVE CONCAVE SOUTHWESTERLY; THENCE SOUTHWESTERLY ALONG SAID CURVE, HAVING A CENTRAL ANGLE OF 01°43'04", A RADIUS OF 532.62 FEET AND A CHORD BEARING OF S84°58'48"W, FOR A DISTANCE OF 15.94 FEET TO THE POINT OF BEGINNING OF THIS DESCRIPTION.

CONTAINING 2,101.24 SQUARE FEET.

Each Defendant is further notified that the Petitioner will petition for an Order of Taking before the Honorable G.H. Eaton, Jr., one of the Judges of the above-styled Court, on the 07th day of January, 1995, at 1:00 p.m., in the Seminole County Courthouse, Sanford, Florida, in accordance with its Declaration of Taking heretofore filed in this cause. All Defendants to this suit and all other interested parties may timely request a hearing on the Petition for the Order of Taking of the time and place designated and be heard. Any Defendant failing to file a timely request for hearing shall waive any right to object to the Order of Taking.

Each Defendant and any other persons claiming any interest in the property described in the Petition in the above-styled Eminent Domain proceeding is hereby required to serve written defenses, if any you have, to the Petition heretofore filed in this cause on the Petitioner, and any request for a hearing on the Petition for the Order of Taking, if desired, on the Petitioner's Attorney, whose name and address is shown below on or before January 20, 1995, and to file

Legal Notice

IN THE CIRCUIT COURT OF THE 17TH JUDICIAL CIRCUIT, IN AND FOR SEMINOLE COUNTY, FLORIDA Case No. 95-00-CA-14-B JOHN C. SCALEE Plaintiff, vs. A & B BAKERY AND RESTAURANT EQUIPMENT, INC., a dissolved Florida Corporation and CARMEN RUIZ, Individually. Defendants.

NOTICE OF ACTION TO: A & B BAKERY AND RESTAURANT EQUIPMENT, INC., a dissolved Florida Corporation and CARMEN RUIZ, Individually. YOU ARE HEREBY NOTIFIED that an action has been commenced to foreclose a Mortgage on the following real property, lying and being situated in Seminole County, Florida, and which premises 8/8/88 Laurel Avenue, Sanford, Florida 32771. This action has been filed against you and you are required to serve a copy of your written defense, if any, to it on ROBERT E. MILLER, ESQ., 8/8/88 Laurel Avenue, Sanford, Florida 32771, within 30 days after first publication and file the original with the Clerk of the Court either before service on Plaintiff's Attorney, or immediately thereafter; otherwise a default will be entered against you for the relief demanded in the Complaint.

IN THE CIRCUIT COURT OF THE 17TH JUDICIAL CIRCUIT, IN AND FOR SEMINOLE COUNTY, FLORIDA Case No. 95-00-CA-14-B JOHN C. SCALEE Plaintiff, vs. A & B BAKERY AND RESTAURANT EQUIPMENT, INC., a dissolved Florida Corporation and CARMEN RUIZ, Individually. Defendants.

NOTICE OF SALE OF MOTOR VEHICLE PURSUANT TO § 316.06(1) FLORIDA STATUTES. VIN 1J4TJBAAG0407485. 1978 FORD. VIN 1J4TJBAAG0407485. 1978 FORD. VIN 1J4TJBAAG0407485. 1978 FORD. VIN 1J4TJBAAG0407485. 1978 FORD.

Request for Proceeds of Sale of Motor Vehicle. Request for Proceeds of Sale of Motor Vehicle. Request for Proceeds of Sale of Motor Vehicle.

Request for Proceeds of Sale of Motor Vehicle. Request for Proceeds of Sale of Motor Vehicle. Request for Proceeds of Sale of Motor Vehicle.

Request for Proceeds of Sale of Motor Vehicle. Request for Proceeds of Sale of Motor Vehicle. Request for Proceeds of Sale of Motor Vehicle.

Request for Proceeds of Sale of Motor Vehicle. Request for Proceeds of Sale of Motor Vehicle. Request for Proceeds of Sale of Motor Vehicle.

Request for Proceeds of Sale of Motor Vehicle. Request for Proceeds of Sale of Motor Vehicle. Request for Proceeds of Sale of Motor Vehicle.

Request for Proceeds of Sale of Motor Vehicle. Request for Proceeds of Sale of Motor Vehicle. Request for Proceeds of Sale of Motor Vehicle.

Request for Proceeds of Sale of Motor Vehicle. Request for Proceeds of Sale of Motor Vehicle. Request for Proceeds of Sale of Motor Vehicle.

Request for Proceeds of Sale of Motor Vehicle. Request for Proceeds of Sale of Motor Vehicle. Request for Proceeds of Sale of Motor Vehicle.

Request for Proceeds of Sale of Motor Vehicle. Request for Proceeds of Sale of Motor Vehicle. Request for Proceeds of Sale of Motor Vehicle.

Request for Proceeds of Sale of Motor Vehicle. Request for Proceeds of Sale of Motor Vehicle. Request for Proceeds of Sale of Motor Vehicle.

the original of your written defenses and any request for hearing on the Petition for the Order of Taking with the Clerk of this Court either before service on the Petitioner's Attorney or immediately thereafter. If you fail to file a timely request for hearing on the Petition for the Order of Taking you shall waive any right to object to the Order of Taking.

WITNESS my hand and seal of said Court on the 06th day of December, 1994.

MARYANNE MOORE CLERK OF THE CIRCUIT COURT IN AND FOR SEMINOLE COUNTY, FLORIDA By: Ruth King Deputy Clerk ROBERT A. McMILLAN County Attorney for Seminole County, Florida Seminole County Services Building 1101 East First Street Sanford, Florida 32771 Telephone: (407) 251-1100 Ext. 7600 Attorney for Petitioner Publish: January 1, 1995 and January 8, 1995 DE2-4

Legal Notice

SEMINOLE COUNTY BOARD OF ADJUSTMENT NOTICE OF PUBLIC HEARING JANUARY 25, 1995 8:00 P.M.

TO WHOM IT MAY CONCERN: NOTICE IS HEREBY GIVEN THAT the Seminole County Board of Adjustment will conduct a public hearing to consider the following:

- 1. HUGH A. SWANN - SA05-17V - R-1A Residential Zone - Rear yard setback variance from 25 ft. to 20 ft. for a rear addition on Lot 216, Section 29-22-03, Unit 10, P. 21, Section 29-22-03, 1/2 mile S of Grand Avenue and 1/2 mile S of Howell Branch Road. (D157)
2. GAVIN S. GYTHIA WALTER - SA05-17E - A-1 Agriculture Zone - Removal of an existing mobile home on Lot 6-5, Lake Harvey Estates, (Tan Parcel 51), Section 11-09-03, 1/2 mile S of Grand Avenue and 1/2 mile S of Howell Branch Road. (D157)
3. WILLIAM E. D'AMICO - SA05-17E - A-1 Agriculture Zone - To place a mobile home on Tan Parcel 51, Section 11-09-03, 1/2 mile S of Grand Avenue and 1/2 mile S of Howell Branch Road. (D157)
4. GARY S. HARRIS - SA05-17E - A-1 Agriculture Zone - Removal of an existing mobile home on Lot 11, Seminole Estates, Unit 11, (Tan Parcel 51), Section 11-09-03, 1/2 mile S of Grand Avenue and 1/2 mile S of Howell Branch Road. (D157)
5. WILLIAM E. D'AMICO - SA05-17E - A-1 Agriculture Zone - To place a mobile home on Tan Parcel 51, Section 11-09-03, 1/2 mile S of Grand Avenue and 1/2 mile S of Howell Branch Road. (D157)

Request for Proceeds of Sale of Motor Vehicle. Request for Proceeds of Sale of Motor Vehicle. Request for Proceeds of Sale of Motor Vehicle.

Request for Proceeds of Sale of Motor Vehicle. Request for Proceeds of Sale of Motor Vehicle. Request for Proceeds of Sale of Motor Vehicle.

Request for Proceeds of Sale of Motor Vehicle. Request for Proceeds of Sale of Motor Vehicle. Request for Proceeds of Sale of Motor Vehicle.

Request for Proceeds of Sale of Motor Vehicle. Request for Proceeds of Sale of Motor Vehicle. Request for Proceeds of Sale of Motor Vehicle.

Request for Proceeds of Sale of Motor Vehicle. Request for Proceeds of Sale of Motor Vehicle. Request for Proceeds of Sale of Motor Vehicle.

Request for Proceeds of Sale of Motor Vehicle. Request for Proceeds of Sale of Motor Vehicle. Request for Proceeds of Sale of Motor Vehicle.

Request for Proceeds of Sale of Motor Vehicle. Request for Proceeds of Sale of Motor Vehicle. Request for Proceeds of Sale of Motor Vehicle.

Request for Proceeds of Sale of Motor Vehicle. Request for Proceeds of Sale of Motor Vehicle. Request for Proceeds of Sale of Motor Vehicle.

Request for Proceeds of Sale of Motor Vehicle. Request for Proceeds of Sale of Motor Vehicle. Request for Proceeds of Sale of Motor Vehicle.

Request for Proceeds of Sale of Motor Vehicle. Request for Proceeds of Sale of Motor Vehicle. Request for Proceeds of Sale of Motor Vehicle.

Request for Proceeds of Sale of Motor Vehicle. Request for Proceeds of Sale of Motor Vehicle. Request for Proceeds of Sale of Motor Vehicle.

Request for Proceeds of Sale of Motor Vehicle. Request for Proceeds of Sale of Motor Vehicle. Request for Proceeds of Sale of Motor Vehicle.

CELEBRITY CIPHER by Luis Campos. Celebrity Cipher contains the names of famous people, just and present. Each letter in the cipher stands for another. Today's star is Diana C. J'OFF BYXDRDFO VBEQV MRES KMFOYSV DBRIGS J OXV'H OSFJSES JV MXIKMJ. VA BXBDFS ZXY RVQ YBR. CXV. - BRIP BXIVOXVB. PREVIOUS SOLUTION: "I don't want to sound too trendy, but I feel very privileged to be both healthy and in work." - Kenneth Branagh.

OFF THE LEASH By W.B. Park. Tonight, of Pard, we celebrate New Year's Eve - TWO cans of beans. Image of a dog.

You Light THE WAY United Way. Image of a lightbulb.



Legal Notices

NOTICE OF FICTITIOUS NAME
Notice is hereby given that I am engaged in business at 482...

NOTICE OF FICTITIOUS NAME
Notice is hereby given that I am engaged in business at 482...

IN THE CIRCUIT COURT FOR SEMINOLE COUNTY, FLORIDA
PROBATE DIVISION
FILE NUMBER 95-1141 CP

NOTICE OF ADMINISTRATION
The administration of the estate of HELEN C. WALKER, deceased...

ALL INTERESTED PERSONS ARE NOTIFIED THAT:
All persons on whom this notice is served who have objections...

Personal Representative:
DONALD STEINSTRON
778 Piedmont Circle
Lake Mary, FL 32746

Don't Miss A Single Issue!
LOCAL NEWS • LOCAL SPORTS • LOCAL EDITORIALS
PEOPLE • HEALTH & FITNESS • EDUCATION • BUSINESS

CLASSIFIED ADS

Seminole Orlando - Winter Park
322-2611 831-9993

CLASSIFIED DEPT. HOURS
6:00 A.M. - 5:30 P.M.
MONDAY thru FRIDAY
CLOSED SATURDAY & SUNDAY

PRIVATE PARTY RATES
14 consecutive times ..... \$75 a line
7 consecutive times ..... 75¢ a line
3 consecutive times ..... 91.19 a line

DEADLINES
Tuesday thru Friday 12 Noon The Day Before Publication
Sunday 12 Noon Friday • Monday 8:30 P.M. Friday

12 - Elderly Care
EXPERIENCED Caregiver, CNA will care for Elderly also...

21 - Personals
ADOPTIONS
Free medical care, transportation, counseling, private doctor...

Legal Notices
REQUEST FOR PROPOSALS
UPGRADE OF THE NORTHERN TELECOM SL-1 PABX NETWORK

IN THE CIRCUIT COURT OF THE EIGHTH JUDICIAL CIRCUIT, IN AND FOR SEMINOLE COUNTY, FLORIDA

NOTICE OF FICTITIOUS NAME
Notice is hereby given that I am engaged in business at 381 Geneva Ct., Oviedo, Seminole County, Florida...

NOTICE OF FICTITIOUS NAME
Notice is hereby given that I am engaged in business at 381 Geneva Ct., Oviedo, Seminole County, Florida...

25 - Special Notices

FAX
YOUR CLASSIFIED AD TO US ANYTIME DAY OR NIGHT
407-323-9408

For convenient and economical advertising, nothing beats the Sanford Herald. Fax us your ad to the Classified Dept. and include the following information:

Billing name, address, and phone number
Contact name and phone number for ad verification

27 - Nursery & Child Care
CHILDREN in Christian home. Fun & learning, hot meals, playground & fun yard. 585-9928

28 - Business Opportunities
WREN FROM HOME part time/full time, set your own hours. 322-2222

29 - Financial Services
RENTAL, Guaranty & Asset Management. 322-2222

31 - Money to Lend
Help driving and still get the money! All you need is your title. Call Jack Diamond for appointment 407-245-7197

71 - Help Wanted
ADD TO YOUR INCOME!
AVON 80091
CALL 322-0297 or 322-4953

71 - Help Wanted
PRODUCTION
We have permanent positions available! Must lift 40+ pounds and work overtime.

71 - Help Wanted
ASSEMBLY
Longwood company seeks handmen processors. No experience necessary. 68 hr.

71 - Help Wanted
CLEAN
Part time 30-35 hrs. M-F, credit exp. helpful. Drug-free workplace. Non-smoking office. Apply: 2000 Palm Pk., 401 W. 15th St. Sanford.

71 - Help Wanted
SOCIAL WORKER
A.A. degree with 1 year experience. Pay range 24-26K. No phone calls. The Salvation Army, 700 W. 5th St./P.O. Box 1948, Sanford, FL 32771

71 - Help Wanted
SUPERVISOR
LAUNDRY/HOUSEKEEPING
Experience in management and environmental services required. Knowledge of Federal and State regulations highly desirable. Immediate opening in a 120 bed superior rated facility. Apply within: Sanford Manor, 40 North Highway 17-96, Sanford, FL 32771, P.O. 322-2222

71 - Help Wanted
TRUCK DRIVER
For car hauler, experience needed for loading cars. Full time position. 322-0277

71 - Help Wanted
TRUCK DRIVER
Current drivers license. 322-2222

71 - Help Wanted
TRUCK DRIVER
Must have valid Florida drivers license and be able to drive truck. 322-2222

71 - Help Wanted
TRUCK DRIVER
Class B, experienced only! 322-2222

71 - Help Wanted
Earn Holiday Money
Tired of retail hours? Now about 40 hrs. per week? Paid mileage, car needed. Call Harry Martin. 322-2222

71 - Help Wanted
Foot Massage
Must be experienced in massage and repair of CTR trailers. Must be qualified to work on A/C systems. 322-2222

71 - Help Wanted
FLOOR PERSON
Must be experienced in maintenance and repair of CTR trailers. Must be qualified to work on A/C systems. 322-2222

71 - Help Wanted
LANDSCAPE MAINTENANCE
Exp. preferred. Self motivated, hard worker, must have drivers lic. & transportation. Call John: 322-2222, TOM BECKEL LANDSCAPING.

71 - Help Wanted
LITTER PICKUP
For highways, 4 people needed, temp. position, may lead to permanent. Above average daily wage. 322-2222

71 - Help Wanted
NOW HIRING COOKS
Full or Part Time. Apply at: BOB EVANS, 200 FLAG LANE OFF OF L.H. MARY BLVD.

71 - Help Wanted
RESTAURANT
Sub Shop. Part time 11am-3pm. Mon-Fri. Apply: 200 Flag Lane, 200 W. 1st St. Sanford.

71 - Help Wanted

ADD TO YOUR INCOME!
AVON 80091
CALL 322-0297 or 322-4953

APPLIERS \$11 HR
We Train! Local work! 813-971-7728

ASSEMBLY
Longwood company seeks handmen processors. No experience necessary. 68 hr.

CLEAN
Part time 30-35 hrs. M-F, credit exp. helpful. Drug-free workplace. Non-smoking office. Apply: 2000 Palm Pk., 401 W. 15th St. Sanford.

SOCIAL WORKER
A.A. degree with 1 year experience. Pay range 24-26K. No phone calls. The Salvation Army, 700 W. 5th St./P.O. Box 1948, Sanford, FL 32771

SUPERVISOR
LAUNDRY/HOUSEKEEPING
Experience in management and environmental services required. Knowledge of Federal and State regulations highly desirable. Immediate opening in a 120 bed superior rated facility. Apply within: Sanford Manor, 40 North Highway 17-96, Sanford, FL 32771, P.O. 322-2222

TRUCK DRIVER
For car hauler, experience needed for loading cars. Full time position. 322-0277

TRUCK DRIVER
Current drivers license. 322-2222

TRUCK DRIVER
Must have valid Florida drivers license and be able to drive truck. 322-2222

TRUCK DRIVER
Class B, experienced only! 322-2222

Earn Holiday Money
Tired of retail hours? Now about 40 hrs. per week? Paid mileage, car needed. Call Harry Martin. 322-2222

Foot Massage
Must be experienced in massage and repair of CTR trailers. Must be qualified to work on A/C systems. 322-2222

FLOOR PERSON
Must be experienced in maintenance and repair of CTR trailers. Must be qualified to work on A/C systems. 322-2222

LANDSCAPE MAINTENANCE
Exp. preferred. Self motivated, hard worker, must have drivers lic. & transportation. Call John: 322-2222, TOM BECKEL LANDSCAPING.

LITTER PICKUP
For highways, 4 people needed, temp. position, may lead to permanent. Above average daily wage. 322-2222

NOW HIRING COOKS
Full or Part Time. Apply at: BOB EVANS, 200 FLAG LANE OFF OF L.H. MARY BLVD.

RESTAURANT
Sub Shop. Part time 11am-3pm. Mon-Fri. Apply: 200 Flag Lane, 200 W. 1st St. Sanford.

71 - Help Wanted

ADD TO YOUR INCOME!
AVON 80091
CALL 322-0297 or 322-4953

APPLIERS \$11 HR
We Train! Local work! 813-971-7728

ASSEMBLY
Longwood company seeks handmen processors. No experience necessary. 68 hr.

CLEAN
Part time 30-35 hrs. M-F, credit exp. helpful. Drug-free workplace. Non-smoking office. Apply: 2000 Palm Pk., 401 W. 15th St. Sanford.

SOCIAL WORKER
A.A. degree with 1 year experience. Pay range 24-26K. No phone calls. The Salvation Army, 700 W. 5th St./P.O. Box 1948, Sanford, FL 32771

SUPERVISOR
LAUNDRY/HOUSEKEEPING
Experience in management and environmental services required. Knowledge of Federal and State regulations highly desirable. Immediate opening in a 120 bed superior rated facility. Apply within: Sanford Manor, 40 North Highway 17-96, Sanford, FL 32771, P.O. 322-2222

TRUCK DRIVER
For car hauler, experience needed for loading cars. Full time position. 322-0277

TRUCK DRIVER
Current drivers license. 322-2222

TRUCK DRIVER
Must have valid Florida drivers license and be able to drive truck. 322-2222

TRUCK DRIVER
Class B, experienced only! 322-2222

Earn Holiday Money
Tired of retail hours? Now about 40 hrs. per week? Paid mileage, car needed. Call Harry Martin. 322-2222

Foot Massage
Must be experienced in massage and repair of CTR trailers. Must be qualified to work on A/C systems. 322-2222

FLOOR PERSON
Must be experienced in maintenance and repair of CTR trailers. Must be qualified to work on A/C systems. 322-2222

LANDSCAPE MAINTENANCE
Exp. preferred. Self motivated, hard worker, must have drivers lic. & transportation. Call John: 322-2222, TOM BECKEL LANDSCAPING.

LITTER PICKUP
For highways, 4 people needed, temp. position, may lead to permanent. Above average daily wage. 322-2222

NOW HIRING COOKS
Full or Part Time. Apply at: BOB EVANS, 200 FLAG LANE OFF OF L.H. MARY BLVD.

RESTAURANT
Sub Shop. Part time 11am-3pm. Mon-Fri. Apply: 200 Flag Lane, 200 W. 1st St. Sanford.

97 - Apartments Furnished / Rent

SANFORD, 1 bdrm. complete privacy 1 blk. from hospital. \$100 wk. plus \$200 sec. incl. utilities. 322-7973

97 - Apartments Unfurnished / Rent
A MONTHLY SPECIAL!
Call about our 2 bdrm. 9120. Move in Special! For info: Cedar Crest Apts. 322-2222

AVAILABLE NOW 2/2, new single story, 4 unit building. Quiet Historic District. W/D \$488 month. 322-7747

BRIDGEWATER APTS - Sanford/L.H. Mary. Call today! Only a few left! Call Lisa 322-2222

MANNERS VILLAGE
Lake Ada 1 bdrm. \$350 mo. 2 bdrm. \$415/mo and up. 322-8676

SANFORD, 3 bdrm., carpet, security system, full kit. 304-9700 discounted \$415

SANFORD 1 bedroom, \$230 per month, \$100 security deposit. Call 407-925-1427

99 - Apartments Unfurnished / Rent

See us for the New Year
Call for a great 1995!
322-2926...SHERIDAN APTS

100 - Condominium Rentals
L.O. 2/3, SANFORD, scrn. porch, wash dryer, min. 1 yr. 1473 mo. plus dep. 299-2609

103 - Houses Unfurnished / Rent
BEAVER, close to I-4, w/wood-dryer hookups, fenced yard, 2/1 1/2, \$600 mo. 322-4223

DELTONA 2/1, living room, dining room & Florida room. \$285/month plus sec. 322-3245

FOR SALE BY OWNER huge 2 bdrm villa, waterfront, new appliances & carpet, screened porch, wash dryer, min. 1 yr. \$4,800 down, approx. \$600 closing. Rent w/option possible \$250/mo. 321-2516

PINECREST
Spacious 3 bedroom home with pool and fireplace. Only \$48.000. The Williams Group, Inc. Realtors 321-6888

Sanford Court Apartments
Energy efficient studios. Electric included in Studios Only. FURNISHED and UNFURNISHED
Single Story Design - no one below or above
Friendly, On-Site, Dependable Management
• Abld Storage, Private Patio & More!
• Studios & 2 Bedrooms Available
3201 S. Sanford Ave. #109 • 322-3301

We make renting a Breeze
FREE RENT\*
On 1, 2 & 3 Bedroom Apartment Homes!
Geneva Gardens
1806 W. 20th Street • Sanford
322-2080
Hours: Mon. - Fri. 9:30 - 5:30
\*With 12 Month Lease

January Rent \$150
Special LIMITED TIME OFFER
Move in By January 15

LET A SPECIALIST DO IT!

NOTICE
FLORIDA STATE REQUIRES all contractors be registered or certified. To verify a state contractor's license call 1-800-342-7948. Occupational Licenses are required by the county and can be verified by calling 321-1126, ext. 7422

Carpentry
CARPENTER All kinds of home repairs, painting & ceramic tile. Richard Gross. 321-5972

Plumbing/Pipe
STANDARD SPLY BAR
flavored. Pick up or Delivery! 322-3481

Pressure Cleaning
NOW DRYS. Each driveway, roof, pool decks, walks, houses. Pro Est. 321-4122

Concrete
CAPTAIN CONCRETE, Wayne Seal. 1 Man Quality Operation! 322-2222... 407-254-0066

Home Improvement
AFFORDABLE HOME Repair Dependable. All phases. Call for Free est. Michael. 322-7100

Swimming Pool Service/Repair
POOL SERVICE, why 50/mo. Essential pool repair. 322-2222

Country Lake Apartments
2714 Ridgewood Ave. Sanford
322-5204

We've got it!
a) affordability!
b) space!
c) great location!
d) fun!
e) all of the above!
1 Month's Rent FREE
Coovilla APARTMENTS
2580 Ridgewood Ave., Sanford
322-1431

