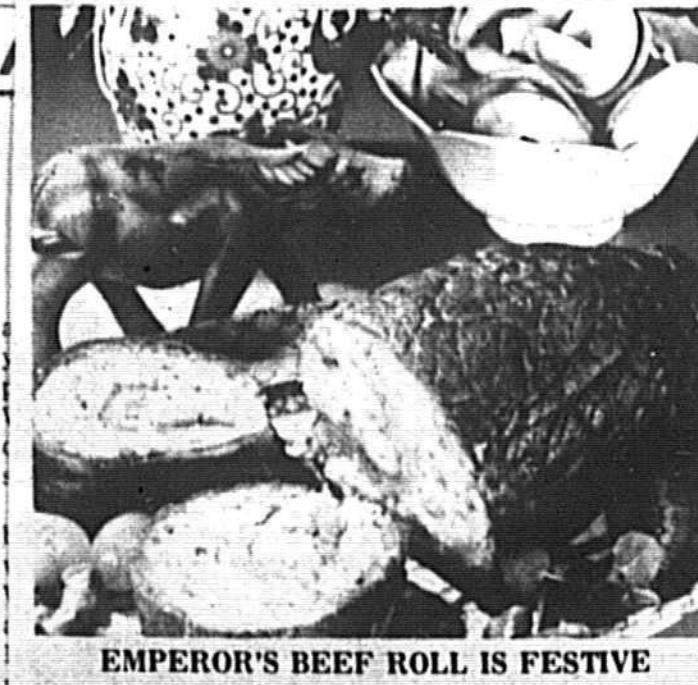


Confucius Say:

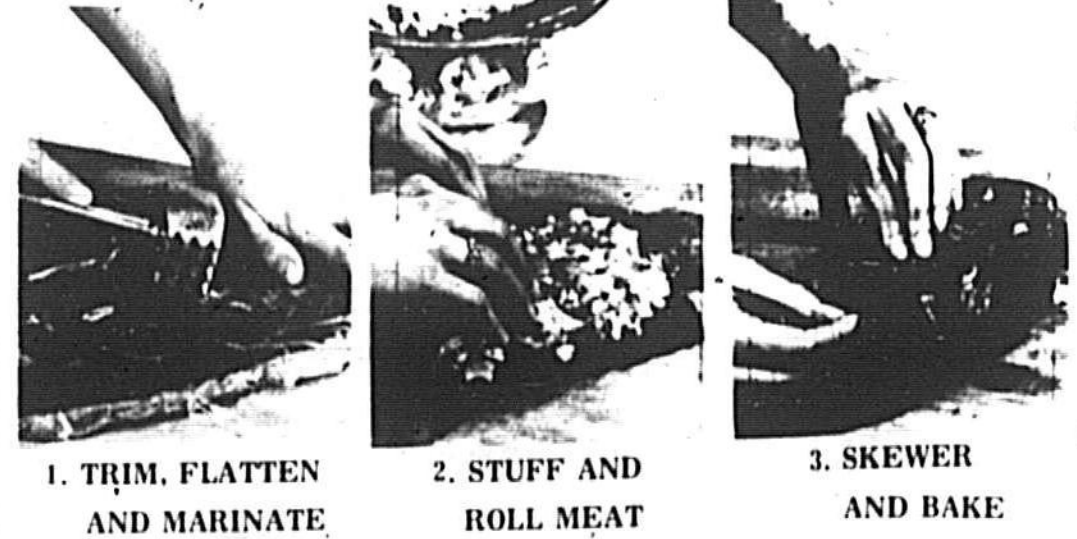
Harvest Moon Is Time For Feasting



EMPEROR'S BEEF ROLL IS FESTIVE

Festivals of thanksgiving for a bountiful harvest are...

"moon" cakes and fruits that are round in shape like the moon.



AMERICAN FOOD SERVICES FORMERLY PARK AND SHOP

14 Oz., 8 Pack COCA COLA 89c PLUS DEPOSIT

Clip This Coupon PUREX BLEACH GAL. 48c

Clip This Coupon 12 OZ. CANS SCHLITZ BEER \$1.28

MARTHA WHITE MAC-CHEESE DINNER 4/1

APPLE JELLY 59c

CRISCO OIL 99c

SUNNYLAND BUDGET SLICED BACON 68c

T-BONE STEAK 1.13

DRAPERS GOLDEN YELLOW WHOLE FRYERS 39c

ALL MEAT WIENERS 68c

RED DELICIOUS APPLES 89c

Clip This Coupon BORDEN'S MILK HALF GALLON \$1.19

Clip This Coupon GEORGIA RED TOMATOES 4 16 OZ. CANS 88c

Clip This Coupon DETERGENT SUPER SUDS GIANT 40 OZ. 58c

BORDEN'S COTTAGE CHEESE 99c

LADY BORDEN MORTON FROZEN 457'S FLAVORS CREAM PIES 69c

HEAVY WESTERN LAZY AGED SIRLOIN or ROUND STEAK \$1.38

CHUCK ROAST 77c

SUNNYLAND SMOKED PICNICS 68c

SPARE RIBS 29c

SPANISH MACKEREL 69c

MURRAY'S APPLE CIDER \$1.49

EMPEROR'S BEEF ROLL Yield: 8 to 10 servings

Combine the ingredients for marinade (except cornstarch) and pour over meat in shallow dish.

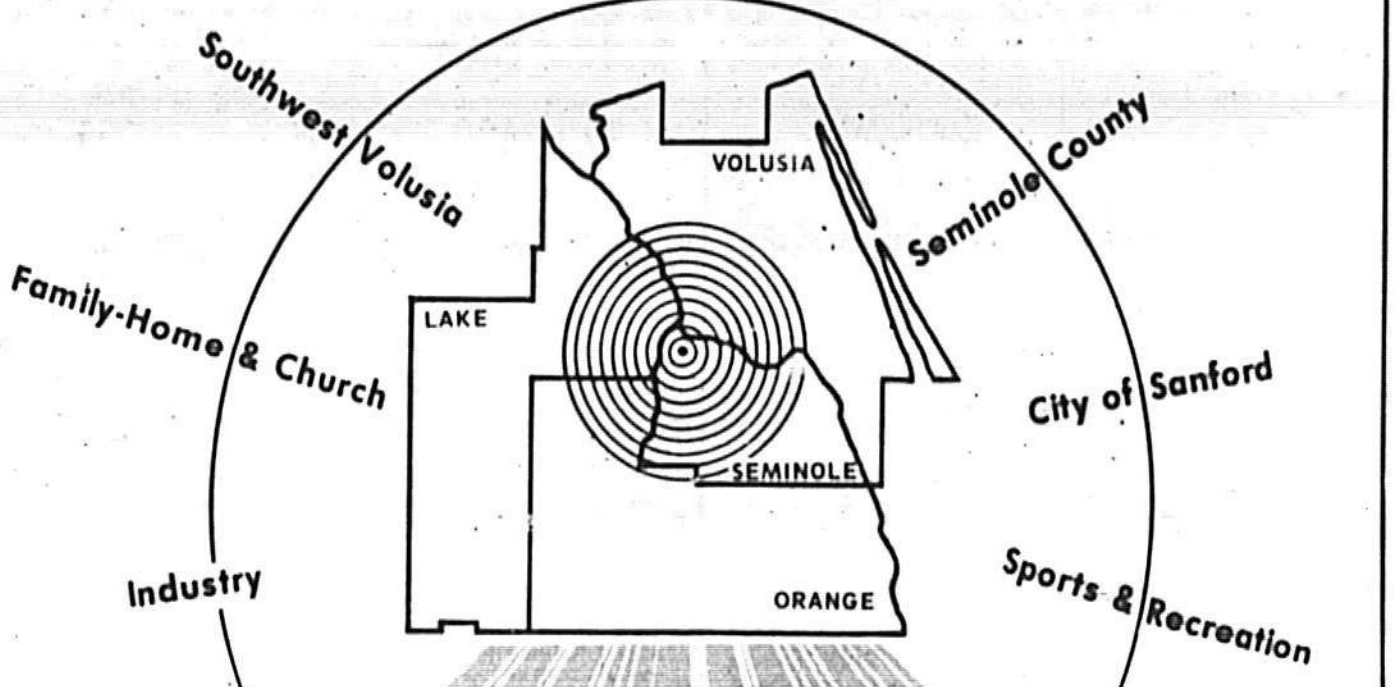
BREAD STUFFING 1/2 cup chopped onion

RICESTUFFING 1/2 cup each: chopped La Choy Water Chestnuts, mushrooms, and celery

COOK water chestnuts, mushrooms, and celery

Step III Spoon stuffing, either bread or rice, onto meat, spreading to within 1/2-inch of edges.

Join Us In Celebrating The Wonderful Progress Of Beautiful Seminole And South West Volusia Counties...



Central Florida REFLECTION 1977 Progress Edition

Send PROGRESS 1977 to your family and friends outside Florida and let them see for themselves what Central Florida life is all about.

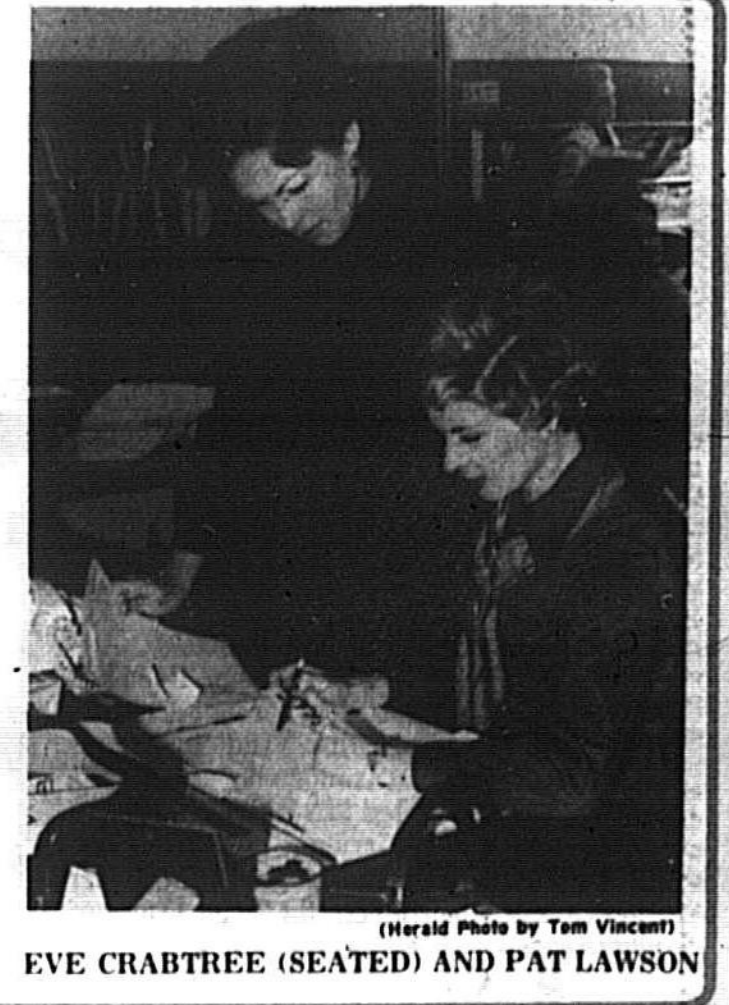
ONLY \$1.00 PER COPY Postage Prepaid RESERVE YOUR EXTRA COPIES TODAY!

RESERVE YOUR EXTRA COPIES TODAY! Name, Mailing Address, City, State, Zip

NO TELEPHONE ORDERS, PLEASE Evening Herald 300 N. FRENCH AVE. SANFORD, FLA.

'We Handle Them The Same As Men' Women Pay Child Support, Too

By MARK WEINBERG Herald Staff Writer Of the approximately 1,000 parents who make child support payments...



EVE CRABTREE (SEATED) AND PAT LAWSON

Carter: Oil Firms Are Ripping Us Off

WASHINGTON (AP)— President Carter said today the oil and gas companies are trying to become the war profiteers of the energy crisis.

U.S. Boat Rammed, Fired Upon Attack Yacht Near Vietnam

BANGKOK, Thailand (UPI)— A yacht with three Americans aboard, including one woman, came under fire today and was rammed by another vessel off the southern tip of Vietnam...

Lake Mary Official In Hospital LILLIAN GRIFFIN

Honoring National Newspaper Week Newsroom Far From Glamor Depicted By Hollywood

It is the newspaper's city room which the average reader visualizes when he thinks of the day-to-day operation of a newspaper.



EVENING HERALD NEWSROOM AS DEADLINE NEARS

Table listing 'Today' items: Around The Clock, Bridge, Calendar, Comics, Crossword, Editorial, Dear Abby, Dr. Lamb, Horoscope, Obituaries, OURSELVES, Sports, Television, Weather.

# NATION IN BRIEF

## 16-Year-Old Arraigned In Murder Of 3 Girls

GLEN BURNIE, Md. (UPI) — Stuart Kreiner, 16, a quiet boy from Southgate, Md., was picked up at his home Wednesday and ordered to court today for arraignment on three counts of first-degree murder.

## Competency Challenged

SANTA FE, N.M. (UPI) — Joanne Rollo has asked a district court to help her locate her 29-year-old daughter, Kathy, and have her examined for mental competency.

## House Rejects Ethics Law

WASHINGTON (UPI) — Follow-up legislation to a measure passed earlier this year restricting House members' outside income, ordering new and tougher ethics provisions was soundly defeated Wednesday on a 252-160 procedural vote.

Rep. David Obey, D-Wis., chairman of the Commission on Administrative Review that was created after the Wayne Hays-Elizabeth Ray sex scandal, said the key element that beat his bill was frustration by members that — despite reforms — Congress still is under heavy public criticism.

## Space Shuttle Success

EDWARDS AIR FORCE BASE, Calif. (UPI) — The space shuttle Enterprise performed so well in its most important test, a 330-mile-an-hour dive toward the desert in a rehearsal for a spaceship's blistering return from orbit, that only one more test flight will be flown.

"The flight today went better than most of us expected," former astronaut Donald "Duke" Slayton, the project manager, said Wednesday.

## With Sanford Architect

# Board Wants Out Of Contract

By MARYLIN SHEDDEN

The Seminole County School board Wednesday asked attorney Douglas Stenstrom to determine whether it must honor a previously signed contract with Sanford architect Egan N. Kelley for the design of a new middle school in Rock Lake, between SR 434 and the Woodlands Elementary school.

At the next regularly scheduled meeting on Wednesday, the board is suing him to recover damages "in excess of \$2,500" according to Stenstrom. The Rock Lake contract was signed before the lawsuit developed, Layer said.

On another matter Supt. Layer reported to the board that the new county school offices, located at Mellonville and Celery avenues will be ready for occupancy at the end of October.

Approved a policy providing for possible dismissal of employees of the school district who have two chargeable accidents or moving violations within a year, regardless of ownership of the vehicle involved.

## The Long 'Kick' Of The Law

HEWLETT, N.Y. (AP) — It was the 74-year-old great-grandmother's first brush with the law. She argued with a policeman over a traffic ticket and ended up handcuffed and on her way to the police station.



Jim Rasa (right), president of the 1977 United Way drive in Seminole County, is all smiles as last year's chairman, Joseph G. Hartwig, marks progress of current drive, with 31 percent of goal reached. Included in drive is \$22,982.90 collected from Stromberg-Carlson.

John Clary (center), S-C United Way fund drive chairman. Drive ends first week of November.

## HOSPITAL NOTES

ADMISSIONS	DISCHARGES
Sanford: John K. Doyle Sr. Carol J. Gill Josephine Johnson Ruby King Suzie Leebell Lynn B. MacLaughlin Karen L. Munger Mary J. Sommers Robert L. Tidwell William G. Williams Robert Henning, DeBary Winfred W. Henson, DeBary Dominick J. Romano, Deltona Arthella M. Krecker, Enterprise Kathleen A. Green, Geneva Orie R. Mathieu, Geneva Sue Eardley, Longwood Mary S. Zalesky, Longwood Arnold G. Likala, New City	Smyrna Bch. Connie L. Allen Eva S. Easton Beverly J. Hollie Frank Howard Kathleen Mundy Mary E. Phillips Ralph Sena Barbara Smith Joseph W. Stewart Maxine F. Vanzura John H. Worthy Mary Duschner, DeBary Robert Henning, DeBary Howard Langston, Deland Bernard S. Brown, Deltona Mabel C. Lancaster, Deltona Patricia A. Fox, Lake Mary Kelly Hickson, Lake Mary Frederick B. Antonio, Orange

## WEATHER

8 a.m. readings: temperature, 56; overnight low, 55; yesterday's high, 88; barometric pressure, 29.96; relative humidity, 41 per cent; winds, NW to SE at 7 mph.

Much cooler. Partly cloudy today and mostly fair Friday. Highs in the low to mid 70s and lows tonight in the 50s. Northerly winds to 20 mph diminishing at night.

TIDES  
Daytona Beach: High 8:43 a.m., 9:04 p.m., low 2:14 a.m., 2:46 p.m.  
Port Canaveral: High 8:25 a.m., 8:57 p.m., low 2:02 a.m., 2:30 p.m.  
Baysport: High 1:59 a.m., 2:46 p.m., low 8:33 a.m., 9:42 p.m.

# Anniversary Special \$790

- Flannel Shirts
- Nylon Windbreakers
- Golf Shirts

SAVE on each of these items this week at

**HIS Store for Men**

FREE COFFEE FREE ALTERATIONS

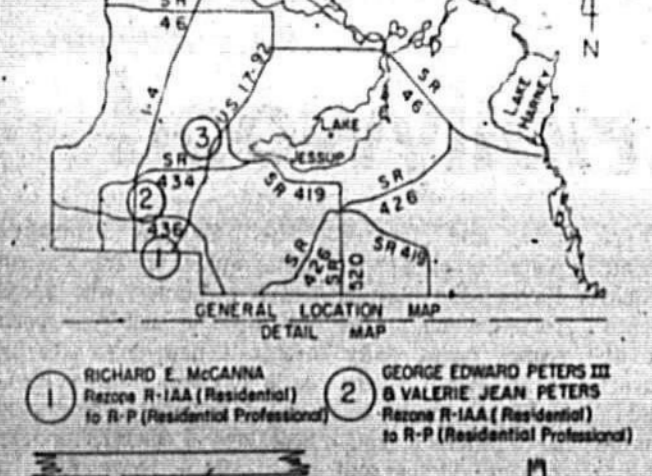
SANFORD PLAZA SANFORD, FLORIDA

BANKAMERICAN MASTER CHARGE DINER'S CARD AMERICAN EXPRESS

## NOTICE OF PUBLIC HEARING

SEMINOLE COUNTY PLANNING AND ZONING COMMISSION

2 NOV. 1977 7:30 P.M. Room 203 SEMINOLE COUNTY COURTHOUSE SANFORD, FLORIDA



1. RICHARD E. MACANNA, P.L.L.C. (Residential) to R-1P (Residential Professional) \$2,450  
2. GEORGE EDWARD PETERS III, P.L.L.C. (Residential) to R-1P (Residential Professional) \$2,450  
3. SANFORD KAY, P.L.L.C. (Duplex) to C-2 (Retail Commercial) \$17,950

WRITTEN COMMENTS FILED WITH THE LAND DEVELOPMENT ADMINISTRATOR WILL BE CONSIDERED PERSONS APPEARING AT THE PUBLIC HEARING WILL BE HEARD ORALLY. HEARINGS MAY BE CONTINUED FROM TIME TO TIME AS FOUND NECESSARY.

CLERK: J. L. BROWN, SANFORD, FLORIDA 327-4330 (4037)

11 OCT. 1977

## Evening Herald

Thursday, October 13, 1977—Vol. 70, No. 44

Published Daily and Sunday, except Saturday and Christmas Day by The Sanford Herald, Inc., 300 N. French Ave., Sanford, Fla. 32771.  
Second Class Postage Paid at Sanford, Florida 32771.  
Home Delivery, 55 cents; Month, \$2.40; 6 Months, \$14.20; Year, \$26.40. By Mail, month, \$2.70; 6 Months, \$16.20; 12 Months, \$32.40.

## Sterchi's annual FALL FESTIVAL SALE!

LOOK TO STERCHI'S FOR SAVINGS, NAME BRANDS, FULL SERVICE & FREE DELIVERY!

OPEN MONDAY THRU SATURDAY 9:00 AM TO 5:30 PM



## SOLID OAK COLONIAL LEISURE LIVING ROOM IN A BEAUTIFUL HERCULON® PLAID

Make your living room say "welcome" with this handsome selection! Attached pillow backs, thick foam seat cushions, solid oak wood trim inspired by the "Judge's Gavel"! Covered in long wearing Herculon® plaid. See this great buy at Sterchi's!

**SOFA** **LOVE SEAT** **CHAIR**  
**\$299** **\$279** **\$199**  
 Reg. \$349.95 Reg. \$299.95 Reg. \$219.95

**Credit with a Personal Touch!**

We have 86 years experience in financing for your own accounts, and we know how to get you the credit you need, exactly. You're invited to come in, make your selection and ask our Good Guy Credit Manager to find a plan just for you. We think you'll like doing business the Sterchi way, and we think you'll agree that Sterchi's Credit really is Credit with a Personal Touch.

**NO INSTALLMENT PAYMENTS 'TIL DECEMBER 1977**

WE FINANCE OUR OWN ACCOUNTS

FREE DELIVERY FREE SET UP

**LAYAWAY NOW FOR CHRISTMAS**

**1100 FRENCH AVE. 322-7953**

"IT DOESN'T COST TO SHOP AT STERCHI'S—IT PAYS!"

# FLORIDA IN BRIEF

## Preferential Treatment Prompts Racketeer's Transfer

TAMPA (AP) — Reputed Florida underworld figure Frank Diecidue, convicted last year on federal racketeering charges and jailed for contempt of court, has been quietly transferred to an Orlando jail.

## Red Tide Outbreak Hits Coast

FORT MYERS (UPI) — An outbreak of red tide has hit the Gulf Coast, killing at least some 3,000 to 6,000 fish which have surfaced sporadically from northern Pine Island to Boca Grande in Lee County.

## Senate Shake-Up

TALLAHASSEE (AP) — The Senate was still reeling today from two days of major shake-ups of committee chairmanships handed down by Senate President Lew Brantley.

# Thieves Make Off With Meats, Silverware

By BOB LLOYD Herald Staff Writer

Burglars ransacked a residence near Geneva Wednesday afternoon taking \$2,628 in meats and sterling silverware, Seminole sheriff's deputies reported.

English silver service and a carving set missing from her home on SR-426 near Old Mims Road.

## 3 Win Nobel

STOCKHOLM, Sweden (AP) — The Nobel medicine prize was awarded jointly today to three Americans, one of them a woman, for discoveries concerning hormones.

save on energy with **INSULATION**

Now Available From **ADCOCK INSULATION**

- Blown-In Insulation
- Free Estimates
- Insulate Now & Save!!!

800 French Ave. 322-9558

Altamonte Springs, with a case of cigarettes valued at \$180.

Sanford police detective John Foster jailed Rhett Miles Taylor, 25, of Orlando, Wednesday afternoon on a charge of obtaining controlled substance by fraud and deception.

Deputy Robert O'Connor said the man said he found the cigarettes in his vehicle and "didn't know how they got there." The cigarettes were returned to the station.

Deputy Robert O'Connor said the man said he found the cigarettes in his vehicle and "didn't know how they got there." The cigarettes were returned to the station.

Orlando Dr., Sanford, on a circuit court warrant charging the obtaining of property by worthless check. Bond on the felony charge was set at \$5,000, according to county jail records.

Orlando Dr., Sanford, on a circuit court warrant charging the obtaining of property by worthless check. Bond on the felony charge was set at \$5,000, according to county jail records.

## Action Reports

\* Fires  
\* Courts  
\* Police Beat

# 75TH anniversary savings.

## Specials for the family. Boys', men's, girls'.

Boys' western jeans. Special 2 for \$9

Boys' Air Force parka. Special 15.99

Girls' nylon jacket. Special 5.88

Golf shirt. Special 3.99

**JCPenney**

Winter Park and Sanford Plaza-Open daily 10 a.m.-9 p.m. Sunday 12:30-5:30 p.m.  
Orlando Downtown-Open Tues., Wed., Thurs., Sat., 9:30 a.m.-6 p.m. Mon., Fri. 9:30 a.m.-8:30 p.m.

# Sears of Sanford

## SAVE \$37-\$113 on these Kenmore® home appliances

**\$52 OFF** 2-speed washer. Was \$279.95. **227<sup>95</sup>**

**\$37 OFF** Fabric Master dryer. Was \$214.95. **177<sup>95</sup>**

Pair price was \$494.90. Now \$405.90

**\$113 off remote control color TV**. Electronic, Sensor Touch tuning. Super Chromix® black matrix picture tube. Adjustable 1-lumens color. Was \$517.95. **404<sup>95</sup>**

**\$58 off adjustable Powermate vacuum**. Edge control cleans up to walls. Adjustable heater brush. Was \$253.00. **195<sup>00</sup>**

**Sears Automotive Center**

**\$10 OFF** Maintenance-free DieHard® battery. **43<sup>99</sup>**

Was \$53.99 with trade-in

**DieHard**

Shipping extra

Sale ends Oct. 18

Sanford: 322-1771

PINECREST CENTER Hwy. 17-92 & 27th St. SANFORD









# It's Fortunate 'Guru's' Forte Wasn't History

WASHINGTON (AP) — President Carter's foreign policy guru, Zbigniew Brzezinski, spent 20 years as a professor at Harvard and Columbia. Recent events suggest it's fortunate that history was not his specialty.

The Polish-born Brzezinski, an expert on Soviet affairs and international relations, has demonstrated that he can be fallible indeed when it comes to footnotes to American history.

As a recent migrant from the classroom to the White House, Brzezinski couldn't resist play-acting, faced his "students" and asked, "I wonder if you know who the first U.S. president who traveled abroad was?"

After hearing suggestions of George Washington, Woodrow Wilson and John Adams, Brzezinski declared, "No, you are all flunking the history test."

The class then mentioned as possibilities Herbert Hoover, James Monroe and Theodore Roosevelt.

Proudly, the professor asserted, "The first president to travel abroad was (William Howard) Taft in 1909 to Panama." Taft traveled as president-elect, he added.

Well, Taft did go to Panama in January 1909. But Teddy Roosevelt beat him there by more than two years. Roosevelt actually was the first incumbent president to go abroad, visiting Panama in November 1906.

A week earlier, in announcing Carter's four-continent trek, Brzezinski erred in telling reporters that when Carter goes to Nigeria next month, it will be "the first black African country ever to be visited by a U.S. President."

Reporters were quick to discover that in 1943, President Franklin D. Roosevelt visited Liberia, the first independent black nation in Africa.

The one-on-one exclusive President's Club, an invention of Democratic fund-raisers, isn't what it used to be. It is opening its membership rolls to all who can scrape up a \$15 donation to the Democratic National Committee.

Maybe it's evidence that Democrats are getting more democratic.

When Lyndon B. Johnson was president, memberships cost \$1,000 a head. For that kind of money, you stood a pretty good chance of getting invited to a state dinner at the White House or, at the least, an invitation to one of a series of regional banquets at which LBJ showed up to shake every hand.

In those days, and on those occasions, the well-heeled donors got their pictures taken with Johnson, who subsequently sent them personally inscribed plaques.

Jimmy Carter has just put his facsimile signature — a simple "Jimmy" — on a mass mailing to prospective members of the revamped President's Club.

And this is what he says you now get for your money: "The Democratic National Committee will send you your President's Club membership card soon after your contribution is received, and place your name on its mailing list to get periodic reports on our progress."

It's all, folks.

Although Carter suggests that donations average \$25 a person, an enclosed business reply envelope has a place to check off gifts of as little as \$15.

After Carter touched on just about all major foreign and domestic problems in addressing the national committee last week, a reporter playfully asked him about one problem the President did not address. "How about kudzu?" was the question, referring to the noxious vine that spreads unchecked across much of Carter's native South.

"We don't have it under control," a smiling President replied, apparently meaning to suggest he's on top of the problems he did mention.

# SANFORD PLAZA

ONE-STOP SHOPPING

SAVE GAS!

**Newest Business!**  
We welcome **David Karkos' WESTERN AUTO Associate Store** to Sanford Plaza.

13th Anniversary SALE

Great buys - throughout our Plaza!  
Come see and enjoy a slice of our

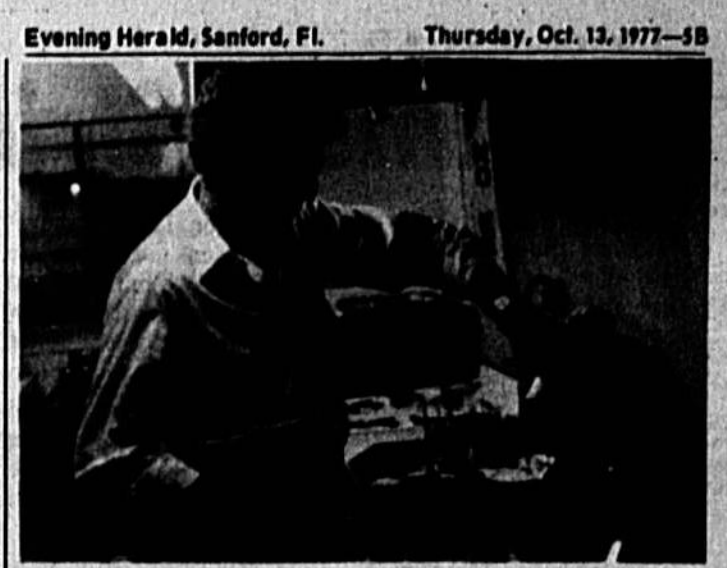
## 300 LB. BIRTHDAY CAKE!

Saturday, October 15 beginning at 11 A.M.

Register in participating stores for **FREE PRIZES**  
Winners to be announced on WTRR broadcast from Sanford Plaza - Sat. Oct. 15

**CAR WASH**  
by the Latin American Club.

SANFORD PLAZA'S **Featured Event** THIS WEEKEND III



GENE STUPELMAN MASTERS OMELET

## Art And Eat Combined For Success

By BOB BURGER  
Herald Staff Writer

What do you do if you are a successful art dealer with the restaurant business in your blood and a yen for the balmy breezes of Florida?

If you are Gene Stupelman you sell your business interests in Maryland and pack your wife and your belongings and spend three months looking around Florida for a suitable place to begin again.

Gene and Sigi Stupelman covered the state from end to end looking for the ideal location for their enterprise. They had ruled out the more metropolitan areas of Florida simply because they were "too much like the hustle and bustle of the area we were moving from."

One day in April of 1977 they found themselves in Sanford. Gene and Sigi found their "ideal" location at 2545 French Ave., and there they went into business with a combination art gallery and restaurant specializing in breakfast and luncheon fare.

Sigi Stupelman was born in Germany near the French border in the town of Saarbrücken. Her mother was German and Father, French. She grew up learning the languages and customs of both countries. When she was 25 she emigrated to the U.S. She met Gene in his restaurant, but it was not exactly love at first sight.

Gene recalls, "She used to come in for lunch about every day. I always got my brother to wait on her. She was so picky. I'd get my teeth whenever she came in."

But somehow they became interested in each other. Soon Sigi gave up her job in a nearby shoe store and came to work at the Stupelmans' restaurant-deli.

"I think he married me because I was so fussy. He knew I'd be good in the restaurant," Sigi said.

Gene and Sigi got into the art dealing business while they were involved in their restaurant in Maryland. They were immediately successful and rapidly built their art business as a sideline into a wholesaling network that covered five states. It was then Gene sold the restaurant and began to specialize in art.

But being an art dealer, did not satisfy Gene's need to "get into" his work with his "hands and his heart."

"When you have worked in the restaurant business for over 20 years, you find a satisfaction in it that's hard to give up. When we decided to move to Florida I swore to Sigi that we would never go into the restaurant business again. But here we are. I broke my promise but she understands that I have to do the kind of work I love."



SIGI STUPELMAN DURING BREAK

### XMAS CARDS

**YOUR NAME IMPRINTED FREE**

On your purchase of 2 boxes of Christmas cards.

Sorry, we cannot imprint assortments.

OFFER GOOD THRU OCTOBER

**Elaine's Cards and Gifts**  
SANFORD PLAZA

### Unisex Family Hair Care Salon

**Kay Wright has now joined our staff.**

MABEL DUGGAN OWNER-OPERATOR  
DIANE JOHNSON BARBARA MAY  
WANDA COLLINS RUTH "POOH" WEISS  
SANDI PALMER

**TREASURE CHEST of BEAUTY**

WELCOME WITH OR WITHOUT APPT.  
SANFORD PLAZA 222-0380

### Castro Convertibles

On our patented "Footfall" mechanism

Those Who Want The Best Always Choose This Trade-Mark

DISCONTINUED STYLES FORMERLY 19.99 - 22.99

**Easy Street \$12.99** WHILE THEY LAST

**Vogue Charm Step \$18.99** LIMITED QUANTITY KNOWN BRAND

**Men's Shoes \$18.99**

**Don's Shoes**  
NEXT DOOR TO JCPENNEY

**BOWL AMERICA SANFORD**

### Still some openings for Fall leagues!

- 22 Lanes
- Complete Pro Shop
- Snack Bar
- Banquet Facilities
- Cocktail Lounge

**FUN AND RECREATION**

**BOWL AMERICA of FLORIDA**  
AIRPORT BLVD. 322-7542

### Furniture Sale Save 40%

REG. \$49.95 **Walnut Console \$40.95**

REG. \$129.50 **Walnut Desk 77.95**

**Singer Portable 50.00**

**Singer Slant Needle 60.00**

**Pfaff Automatic 169.95**

**Sanford Sewing Center**

### WOW!

Name brand 4.95 Ladies' Knit Tops **\$1.67**

Now ALL SIZES TO SIZE 44

**PLAZA SQUARE**  
BARGAINS GALORE! WE DISCOUNT EVERYTHING

SANFORD PLAZA ONLY

**SPECIAL THROUGH SATURDAY**

**Publix Tastykake Cookies**  
ASSORTED FLAVORS **60¢**  
14 OZ. BUCKET

SEE OUR GREAT SELECTION OF **Halloween Candy**

AUTHENTIC CANTONESE

### CHINESE FOOD

OPEN DAILY 11-9

**FAST TAKE-OUT SERVICE**

LUNCH SPECIALS **\$1.99** EVERY DAY

PH. 323-7254

**HONG KONG RESTAURANT**  
SANFORD PLAZA

During SANFORD'S CENTENNIAL YEAR... SANFORD PLAZA'S THIRTEENTH ANNIVERSARY... TAYLOR'S NATURAL FOODS IS CELEBRATING FIVE YEARS IN SANFORD.

Drop by for a cup of herbal tea and sample our natural food snacks.

**- OUR SPECIAL -**  
Friday, Oct. 14 - one day only  
**10% DISCOUNT** on liquid protein, protein powder and protein tablets.

**Taylor's Natural Foods**  
PH. (905) 323-4760

**PLAZA TWIN THEATRE**  
SANFORD PLAZA SHOPPING CENTER Highway 17/17

PLAZA 1 LAST DAY! "END OF THE WORLD" 7:15-10:45 PM

DOUBLE FEATURE **ELVIS** "The trouble with girls (and how to get into it)" **SPEEDWAY** "The trouble with girls (and how to get into it)"

ADULTS 2.35 STUDENT 1.75 CHILDREN 1.35

PLAZA 2 LAST DAY! "GUMBALL RALLY" 7:15-9:45 PM

Starts Friday! Winner of 5 **ACADEMY AWARDS**

RETURNED ENGAGEMENT BY DEMAND **JACK NICHOLSON** **ONE FLEW OVER THE CUCKOO'S NEST**

PH. 7-96-7138

### The Great Trade In Sale

**\$20 Savings**  
Your Old Suit Is Worth \$20.00 When Traded In On Any New Suit At Your...

Choose from a beautiful selection of suits by—

**GEOFFREY BEENE**  
**RAINE**  
**HIS OF FLORIDA**

FREE COFFEE SANFORD PLAZA BANKAMERICARD MASTER CHARGE

FREE ALTERATIONS SANFORD PLAZA DINER'S CARD AMERICAN EXPRESS

SANFORD PLAZA

### VOGUE Sale

Fabulous Fall Buys

Cowl Neck Jerseys - Variety of Shades - Jeans - Slacks - 3 Piece Pantsuits - Sweaters and Coats - Flannel Sleepwear

BANKAMERICARD MASTER CHARGE AMERICAN EXPRESS VOGUE CHARGE

WATCH FOR THE **DELTA KAPPA GAMMA YARD SALE**

Saturday, Nov. 19, 9-5  
at Jim Rowe's yard.  
Jim Rowe Pest Control  
2626 IROQUOIS

Benefits to:  
**MEMORIAL BOOK FUND**  
Seminole Community College

**FLAGSHIP U.S. BANK OF SEMINOLE**

BANK WITH US... A FULL SERVICE BANK MEMBER F.D.I.C. MEMBER FLAGSHIP BANKS, INC.

### Plaza 13th Anniversary Sale

Specials In All Departments

Selected Items—Bridal Sets—Dinner Rings—Men's Diamonds **SAVE 15-25%**

Select Group National Brand Watches **SAVE 30-50%**

Closeout All China and Stainless Tableware **SAVE 50%**

Selected Items Men's and Ladies' Jewelry **SAVE 20-33%**

Open a Sales account or use one of five national credit plans

**ZALES**  
The Diamond Store

### PET SHOP

Tropical Fish Special

BUY (1) AT REGULAR PRICE AND GET (1) LIKE IT FREE

**NO LIMIT**  
(SPECIAL GOOD ONLY WITH THIS AD)

**PET ANIMAL SUPPLY**  
SANFORD PLAZA  
"WE PAMPER OUR PETS - LET US PAMPER YOURS"

Complete Line Of  
PET SUPPLIES PET GROOMING DOGS BIRDS TROPICAL FISH CAGES - CANNERS AQUARIUMS

**323-4635**

**ECKERD DRUGS**

PRICES GOOD THRU SATURDAY

Limit Rights Reserved SANFORD PLAZA ONLY

22 INCH **Power Mower 109.88** REG. 141.88

10x17 **Hibachi 5.97** REG. 7.99

100 TABS **Tylenol 1.27** REG. 1.54 LIMIT ONE

JUST WONDERFUL 13 OZ. **Hair Spray 67¢** REG. 84¢ LIMIT ONE

RAID 16 OZ. **Ant/Roach 1.09** REG. 1.55

FULL SIZE SOLID COLOR **Blankets 5.88** REG. 6.99 ea.

### Puma tennis shoe closeout.

Orig. sold for 12.99 in May '77

Now **9.99**

Puma cotton canvas tennis shoe features cotton Terry insole and cushioned arch support. Comes in natural with blue Puma stripe.

Men's and Women's sizes

**JCPenney**  
SANFORD PLAZA

**Bacio's Italian Villa**

**Italian Bread 2 Loaves \$1.00**

**Italian Sausage L. \$1.49**

EXTRA SPECIAL

**Meatball or Sausage and Pepper Sandwich 69¢**





# TONIGHT'S TV

- Thursday**
- 6:00 (1) (2) (3) (4) NEWS  
 (5) DIMENSIONS IN CULTURE
- 6:30 (1) NBC NEWS  
 (2) CBS NEWS  
 (3) FAMILY AFFAIR  
 (4) AS MAN BEHAVES (F)  
 (5) ABC NEWS  
 (6) DIMENSIONS IN CULTURE CONT.
- 7:00 (1) THE LARS CLUB  
 (2) THE BRADY BUNCH  
 (3) THE CROSS WITS  
 (4) WILD, WILD WORLD OF ANIMALS: "Return of the Falcon"  
 (5) CAROL BURNETT AND FRIENDS  
 (6) MACNEIL-LEHRER REPORT
- 7:30 (1) THE GONG SHOW  
 (2) HOLLYWOOD SQUARES  
 (3) THE MATCH GAME  
 (4) HOLLYWOOD SQUARES  
 (5) THE ROCKIES  
 (6) EAST CENTRAL FLORIDA REPORT
- 8:00 (1) EMERGENCY (R)  
 (2) THE WALTONS: An old Indian, claiming the Walters farm was built on sacred ground, sets it on fire.  
 (3) WELCOME BACK, KOTTER: The sweetshop and Mr. Kotter plan a way to depopulate Horshack, who has joined a religious cult.  
 (4) ONCE UPON A CLASSIC: "Robin Hood." Episode two. Robin leads off robbers who attack Lady Marion's entourage.  
 (5) WHAT'S HAPPENING?: When Miss Collins catches a school newspaper, he quits and starts an underground publication.  
 (6) BEST OF ERNIE KOVACS (F)  
 (7) THE MAN FROM ATLANTIS: "The Madroom." When a scientist loses control of an underwater device he created, the mechanism threatens to wipe out all life.  
 (8) HAWAII FIVE-O: McCall and his partner with the police department's internal affairs office to prove the innocence of a young officer.  
 (9) SPECIAL: "Hazy Lays." Dr. Rod Davis will lead discussion on integration and the black child.  
 (10) SPECIAL: "Hazy Lays." (Premiering "Barney Miller.")
- 8:30 (1) MOVIE: "God's Little Acre." Robert Ryan. Also Ray. 1958. Erskine Caldwell's novel about the conflicts of a family of dirt farmers in Georgia.  
 (2) ABC CAPTIONED NEWS FOR THE DEAF  
 (3) SOAP  
 (4) MOVIE: "God's Little Acre." Robert Ryan. Also Ray. 1958. Erskine Caldwell's novel about the conflicts of a family of dirt farmers in Georgia.  
 (5) ABC CAPTIONED NEWS FOR THE DEAF  
 (6) STARSKY AND HUTCH: "Kill Huggy Bear." Starsky and Hutch's Huggy Bear is marked for death after being robbed of a fortune he had promised to return to his owner.  
 (7) CBS MOVIE CONT.: "The Gun and the Man." A former detective recalls his experiences with two Old West outlaws. Ben Murphy and J.D. Cannon star in this 1971 film.  
 (8) MISSION IMPOSSIBLE  
 (9) TOMORROW  
 (10) NOTICIAS EN ESPANOL
- Friday**
- Morning  
 (1) (Aha!) IT'S THE LAW (Tues.) 30 MINUTES (Wed.)

**SEEK & FIND** LONG RIVERS

CSIKAMHARORRAOLNKC  
 DEIRLSPLLOTNEMARCAS  
 ESNEIRIRLONLQDUCWU  
 OMLNMSITRILANRYATXS  
 AONNRIASITIMEEZYJCSQ  
 RLVGEGPSEVLPISQIAUHU  
 MLLLEPIRQELDTRVSEAH  
 EDNARGOIRLROBQKURNA  
 LRRVDTLELSPHAUQELNN  
 NOEMNORREGENESVOTAA  
 DAREPSENAJSHUINIER  
 ALGPOIKQRNASRGNQOESIT  
 IGHOMPLQSNORRHMICIO  
 DDTNRJLHNUOEKYEJELG  
 SPLLHJOATENMARCASR

Instructions: Hidden words below appear forward, backward, up, down or diagonally. Find each and box it in.

Green Arkansas Pend Oreille  
 James Cimarron Rio Grande  
 Milk Pearl Sacramento  
 Osage Potomac Susquehanna

Tomorrow: Television

**SIDE GLANCES** by Gill Fox

"Can you conceive of anything more blameless than the middle car in a three-car accident?"

**Give the UNITED WAY**

Here are 17 Special Reasons for giving to The United Way Campaign

- USO
- YMCA
- WE CARE
- RED CROSS
- BOY SCOUTS
- GIRL SCOUTS
- SALVATION ARMY
- INFORMATION & REFERRAL
- SEMINOLE YOUTH RANCH
- GOOD SAMARITAN HOME
- CHILDREN'S HOME SOCIETY
- CATHOLIC SOCIAL SERVICES
- VISITING NURSES ASSOCIATION
- COMMUNITY COORDINATED CHILDCARE (4-C)
- SEMINOLE COUNTY MENTAL HEALTH
- MID FLORIDA CENTER FOR ALCOHOLICS
- CENTRAL FLORIDA SHELTERED WORKSHOP

PLEASE HELP - KEEP THESE WORTHY ORGANIZATIONS FUNDED WITH THE MONEY THEY NEED TO CONTINUE THEIR GOOD WORK IN SEMINOLE COUNTY.

Thanks to you... it works for us...

**MAIL A CHECK TODAY**

Add my name to the list of contributors. Enclosed is my check for \$\_\_\_\_\_ to the United Way.

NAME \_\_\_\_\_

ADDRESS \_\_\_\_\_

CITY, STATE, ZIP \_\_\_\_\_

**INTRODUCING Burger Chef's NEW & TASTY ROAST BEEF SANDWICH.**

Thin sliced and stacked.

**Burger Chef**

Present this coupon for a **FREE** Large Size Soft Drink When you try our new Roast Beef Sandwich.

FLORIDA 55

# Kotter 'Small Event' - It's 'Sink Or Swim'

By JAY SHARBUTT  
 AP Television Writer  
 LOS ANGELES (AP) - Come Sunday, Oct. 23, the star of ABC's "Welcome Back, Kotter" will battle NBC's "Big Event" with an ABC special - called "Gabriel Kaplan Presents the Small Event."

It's his first special. And it's the first time he's been executive producer of one. He was asked what an executive producer does.

"I guess," Kaplan ventured, "he's the guy who decides what goes on. A lot of them never show up, they just handle financial arrangements and take the title."

"They say, 'Producer, you produce it; director, you direct it, and it makes money I take the money.'"

If it turns, he suggested, custom calls for the executive producer to blame everyone, then blow town. But he vowed not to do this.

"The Brooklyn-born comic, a soft-spoken, thoughtful guy who sprang to fame in 1973 on NBC's "Tonight" with a wild geriatric spoof of "The Dating Game," said he'll spoof specials on his first special.

For example, he said, he'll have a sports special. "The



GABE KAPLAN

**PLAZA TWIN THEATRE**

ELVIS  
 "The trouble with girls" (and how to get into it)  
 ADULTS 1.50 CHILDREN 1.00

JACK NICHOLSON  
 ONE FLEW OVER THE CUCKOO'S NEST

ACADEMY AWARDS

**DAYS INN**

TASTY WORLD RESTAURANT

BREAKFAST • LUNCH • DINNER  
 SERVED DAILY  
 Seafood - Steaks - Hot & Cold Sandwiches  
 Salads - Low Cal Plates - Desserts

TRY OUR SPECIAL ENGLISH BURGER  
 \$2.25

OPEN 7 DAYS A WEEK  
 6 A.M. TO 11 P.M.

**TASTY WORLD RESTAURANT**  
 DAYS INN  
 Hwy. 44 (W. First) 1st 1-4-Sanford

**GRAND REOPENING SPECIAL**

*Famous Recipe*

BUY 2 REG. DINNERS GET 1 FREE  
 Offer Good Thru Grand Reopening Week

COMPLETE DINNER  
 3 pieces chicken, mashed potatoes & gravy, cole slaw, 2 hot biscuits (money on request)

\$7.92 + tax

SPECIAL Buy 2 Reg. Dinners And Get One DINNER FREE

*Famous Recipe*  
 FRIED CHICKEN

OPEN DAILY 11 A.M. - 11 P.M. - Fri. & Sat. 9 A.M. - 11 P.M.

1809 French Ave. (Hwy. 17-92) Sanford

# Evening Herald

70th Year, No. 47 - Friday, October 14, 1977 Sanford, Florida 32771 - Price 10 Cents

**Housing Project Rents Going Up; 50 To Pay More**

By MARYLIN SHEDDAN Herald Writer

At least 50 of 480 families now living in Sanford Housing Authority projects will be paying more rent in an effort to make rents at the projects more equitable, according to the Seminole Housing Authority (SHA).

"SHA feels that it is unfair that a family with an annual adjusted income of \$8,700 has been paying the current ceiling rate of \$10 a month and family with more than \$18,000 annual adjusted income has been paying the same rate," Thomas Wilson III, executive director, explained. The new rent would either be computed from SHA and HUD rent schedules or the rent would be an amount not to exceed HUD Fair Market Rent.

That rent depends upon the size of the apartment, Wilson explained.

The Fair Market Rents are: \$177 per month for a one bedroom unit; \$212 for two; \$245 for three; \$289 for four; and \$318 for a five bedroom apartment.

New rent levels will not be charged to tenants until their next regularly scheduled annual assessments, Wilson explained. One of the 10 affected tenants will be coming under annual reassessment beginning around February or March, Wilson said. At that time such things as income and family size are evaluated and rents are adjusted, Wilson explained.

The rents appear high, "but when the average rent paid for SHA housing is now about \$31 per month," Wilson explained.

He added state law requires people be charged no less than one-sixth of their adjusted income for rent, and federal law allows no more than 25 per cent be charged.

In other action, the SHA board approved a revision to the rent collection policy and will allow tenants with delinquent rent balances only one chance to make arrangements to pay.

"The Housing Authority board is concerned about the high rent balances owed by some tenants," Wilson said.

He was awarded to low bidder Artes Construction Company, Longwood, for \$21,807.40.

Mrs. Barbara Wyche, chairwoman of the Tenants Council, said that the board's decision to allow a Halloween carnival for children on Oct. 31 at the Castle Brewer Court Center. The Board directed SHA staff to make the change and provide assistance in planning for the carnival. According to Mrs. Wyche the carnival will be held on Monday, Oct. 31, from 6 to 10 p.m. There will be food, games of skill and a dance contest, and the carnival will be open to the public.

THOMAS WILSON III  
 "... we must be fair"

**If Court Orders It Layer: Midyear Midway Mix Possible**

U.S. District Judge George C. Young orders that integration of Midway Elementary school must occur during this school year, it can be done, Supl. William P. Layer testified Thursday.

But school district officials would prefer to see Young maintain his previous order that integration need not take place until the beginning of the 1978-79 school year.

That order was issued Aug. 25, but attorneys for the Justice Department asked that Young reconsider the timing.

Young made no decision Thursday, and neither school district attorneys nor those from the Justice Department would indicate when he might issue a decision. Attorney Ted Julian, representing the school district, did say that similar cases often take "about two weeks."

Young heard testimony from Layer and from Mary Grooms, director of elementary education for Seminole County.

Both school officials testified that the mid-year integration of Midway would create emotional and practical problems.

Mid-year integration of the school would cause "a very unfair and adverse action on curriculum, on the youngsters involved, and it might affect their promotion," Mrs. Grooms testified.

She explained that "at the beginning of a school year, in September, it takes two to four weeks for students and teachers to adjust to each other, for students to feel at home with new classmates and teachers, and for a teacher to gain in-depth knowledge of the educational needs of each student. We allow for that at the beginning of the year," she testified, "but we do not allow for it at other times."

"We expect this change would cause another delay of two to four weeks in the students' school development," Mrs. Grooms testified.

The affected children now attend Pinckney and Goldboro See MIDWAY, Page 2A

WILLIAM LAYER LEAVES FEDERAL COURT

**Honoring National Newspaper Week**

**Composing Room: Vital Cog In Herald's Wheel**

To mark National Newspaper Week, The Evening Herald is presenting daily features explaining the operations of each department. Today: the composing room.

newroom through the composing room:

Typewritten copy is edited and sent to the composing room by editors. One of several keyboard operators converts the written story into a compact perforated tape, a strip of paper on which holes are punched coding the typewritten copy. The coded tape then is put through a computer which "reads" the punched holes and much as a camera does, transforms them into words on a strip of film which is contained in a cassette (portable darkroom). (When the tape is completely run off, the cassette is removed from the computer and processed through a portable processor that develops the film. What emerges is a "galley" of film containing the typewritten story, but neatly "justified" or margined off evenly on both sides.

This galley of type is considered "camera ready" copy that then goes to a proofreader who compares the story on the galley with the original typewritten copy to make certain it is as the reporter wrote it. She marks up any corrections necessary.

Once proofread and corrected, the galley of type is taken to the pasteup section of the composing room, where pasteup personnel look at a "dummy" (similar to plans drafted for building a home) and places the copy according to the dummy

ALLYSON SMITH PASTING UP A PAGE

RALPH HAYS AT THE COMPUTER

**Today**

Around The Clock	4-A	Horoscope	6-B
Bridge	6-B	Hospital	2-A
Calendar	1-B	Obituaries	3-A
Comics	6-B	OURSELVES	1-B
Crossword	6-A	Television	6-1-A
Editorial	1-B	Dear Abby	4-A
Dr. Lamb	6-B	Weather	4-A