

Holland Defense Planned Largely On Water Barrier

By RILEY O'SULLIVAN
AMSTERDAM, Feb. 25.—(AP)—With the Netherlands army building its manpower and gunpower around a basic system of water defenses, Holland in six months has reached a point where the high command speaks more confidently of the army's ability to stand off any invading force.

Progress in the intensive training of a citizen army and construction of fortification along the war broke out in Europe has been such that the general staff conducted a group of correspondents of the Netherlands and neutral countries on a three-day tour designed to demonstrate the effectiveness of the defenses. Another purpose apparently was to combat doubts said to be held in some quarters abroad that the country was determined and ready to use all resources to resist invasion.

The picture gained on the trip along the Dutch-German frontier defenses, main inundation zones through central Holland behind which to the west lie the richest and most populous centers, and the north sea coastal defenses is one of elaborate preparations, not fully realized even by the Dutch public.

Addressing the correspondents, Lieut.-Gen. Baron J. G. Baron Van Voerst Tot Voerst, commanding the field army, boldly declared that any attacks from the east were sure to bog down against the fortified water lines of central Holland—even lightning motorized assaults accompanied by heavy aerial bombardment.

Further, he expressed confidence that the enemy would be unable to negotiate the ice, which the army demonstrated can be blown up and cut in channels to trap tanks and vehicles.

Lines along the German frontier are being strengthened and bridges are mined and heavily guarded.

As is generally known, the defenses in the east are based behind the Maas river following north near the frontier until it turns abruptly westward, roughly paralleling the Waal and Rhine rivers on the way to the sea.

The northward line extends roughly along the IJssel river, which reaches the Zuider Zee. It is commonly stated that the strategic province above the IJssel could not be defended except for delaying action.

In the south, we saw how machine gun posts can be concealed with a bit of ingenuity in hedges and houses, reinforced with steel plates have been constructed, and would take a sharp eye to notice the apertures.

The east opening of one of the larger posts was painted to give



Mrs. Valerie Porter, who was spanked by her husband in argument over his enlistment in British army, smiles cheerfully as she leaves London court. Reason: She won \$14,000 settlement from hubby's parents, who, she claimed in suit, caused him to leave her.

Wingless Airplane Is Being Used By Takers Of Census

DENVER, Feb. 25.—It appears for a time as if high mountains and deep snow were going to slow things down, but, like the mail, the census gets through in Colorado, thanks to ski snowshoes and a new invention.

Snow from five to 20 feet deep is no novelty in some parts of southern Colorado, but it was a terrific handicap to census enumerators.

For instance, John Henschel, district supervisor at Glenwood, had to drive more than 200 miles to reach Walden, only 35 miles away, by ski. Henschel couldn't use skis because of a hip injury.

At Durango, Howard Davis and Jack Price decided to do something about the situation. They constructed a "snowmobile" by adding ski runners, two in front and one behind, to a plane without wings.

"The thing will go up the side of a mountain at a 45-degree angle and it's almost impossible to overturn," says George Dwire, Colorado census supervisor, who had a ride in it.

"It will go 80 miles an hour on snow and 120 on ice. When it strikes a boulder of a tree stump it hurls them. They seem to do no damage, although the edges of the propeller have been slightly frayed by striking tree limbs."

The snowmobile usually follows snow-blogged roads, many of which are impassable for automobiles in early spring, but it frequently cut across country.

Riding the snowmobile is so much fun, enumerators clamor for a chance.

the appearance of a curtained window with a tulip plant on the sill.

The swampy Peel area back of the River Maas, coordinated with the fortified canal systems and new anti-tank canals, gives depth to the defenses stretching south of the great rivers to the Belgian border. The forbidding pest bags of Peel have been mined and ditched, and the region where even the natives have become lost and perished in the ooze was pronounced impassable. It looked like it.

Between the great rivers there is evidence of strongly fortified defenses.

To the north, we walked through snow-decked young fir trees just off the highway. There was no sign of military activity. Without a warning three guns blasted the icy air. Then we were led through trees to a camouflaged, entrenched battery less than 100 yards away.

At another place, the party got a laugh when a staff officer unknowingly walked onto a camouflaged mine trap covered with wire and concealed with a thin layer of earth and leaves. He bounced about, but he was not of tank proportions and the surprised officer remained solid ground.

Adopting the Finnish style, soldiers in open trenches wore their green helmets with white cloth. The heaviest concentration of gun positions—cannons and pill boxes—appeared to be trained on

the highways of access through the Grebbe valley inundation defenses and the historic fortress of Holland waterline south of the Zuider Zee.

The soldiers manning anti-tank guns and machine guns in concrete and steel posts, riflemen in trenches, artillerymen in their camouflaged emplacements and detachments handling explosives for mining highways, bridges and frozen inundation basins showing that they were adept at handling the weapons and were grim about the enemy.

The army maintaining the old fortifications as useful as the centuries-old canals. One large walled and moated fortress was supposed to be a modernized defense work. Special civilian aviation companies an important sector, and an anti-air attack houses standing before it will be blown up and the valley inundated. A lookout post perched on the high tower of an old church nearby would signal the approach of the enemy.

Good News For Women
 Every day women are finding their headaches, nervousness, cramp-like pains, other symptoms of functional dysmenorrhea due to menstruation are helped by CARDUL. Main way it usually helps is by increasing appetite and flow of gastric juices, so aiding digestion, helping build up tissue. Periodic distress is also eased for many who take CARDUL a few days before and during "the time." Women have used CARDUL or more than 25 years!



PRIZE TROPHIES of the first Florida state wide Model Airplane Meet sanctioned by the National Aeronautical Association to be held at Hollywood, Florida, Sunday, March 3rd. The beautiful First Prize Trophy measuring 28 inches in height and valued at \$125.00 donated by the Hollywood Beach Hotel will be offered as an award each year by the Chamber of Commerce until won three times by the same contestant, when it becomes a personal possession. The fine second award trophy was donated by the Villa Hermosa Hotel and the third award cup was given by the Hollywood Theatre.

Liechtenstein Has Lowest Taxation Rate

VADUZ, Liechtenstein, Feb. 25.—(AP)—The little postage-stamp principality of Liechtenstein, between Switzerland and Austria in Germany, has lower taxes than almost every other country in Europe, save on one thing—dogs.

Liechtenstein's 7,000 cows and 2,000 pigs are the main source of income to the country's 10,000 inhabitants. Cows don't like dogs and pigs can't get along without them, so farmers figure the dogs are the better investment. The high taxes on them don't hurt.

SNOW FIGHTS FIRE

WHITEHILL, Mont., Feb. 25.—(AP)—Lack of water didn't stop the volunteer firemen who answered an alarm at the Erik G. Klockare ranch near here. A bunkhouse was blazing. The fire, melted, great quantities of snow. Firemen poured the resultant water on the nearby ranch house, saving it.

ACHING CHEST COLDS

Good More Than "Just Soles"
 To quickly relieve chest cold misery and soothe sore and aching throat—try MORE than "just a salve"—you need a medicine, nothing "counterfeit." Like good old reliable M-steroid. Available by mail for over 20 years. M-steroid penetrates the outer layers of the skin and helps break up local congestion and pain. A stronger Regular, Children's Ointment and Extra Strong, etc.

Crown Gasoline is truly up in quality but not in price.

FOR PREMIUM PERFORMANCE DRIVE IN AND TRY A TANKFUL TODAY.

OPEN All Night

SCOTT'S STANDARD SERVICE
 CORNER 3RD & PARK

TRY ONE MEAL AT LANEY'S AND YOU'LL COME BACK AGAIN

Breakfast—Lunch—Dinner—Supper

LANEY'S DRUG STORE
 PROMPT DELIVERY—TELEPHONE 108

ALTMAN'S SUPER CHEVROLET SERVICE

By Factory... We Use Only... We Specialize In...
 Motor Service...
 Tire Service...
 Oil Service...
 Wash and Wax...
 Air Conditioning...
 Electrical...
 Radios...
 and more.

BABY CHICKS

—And—
Mammoth White Pekin Ducklings

New Shipment Of
 Seed Corn
 Seed Potatoes
 And Other Seeds
 For Quality and
 Price See Us!

UXEDO FEED & Supply Company

INFORMATION, PLEASE
 About Electric Cookery

Q: What does electric cookery mean?
 A: It means to "cook" with electricity. It means to use the heat that you get from electric energy to cook your food. It means to use the heat that you get from electric energy to cook your food.

Q: What are the advantages of electric cookery?
 A: There are many advantages. Electric cookery is clean, safe, and convenient. It allows you to cook your food at a lower temperature, which helps to preserve the nutrients in your food. It also allows you to cook your food more quickly and efficiently.

Q: How can I get more information about electric cookery?
 A: You can get more information by reading the book "Electric Cookery" which is available at a special price. You can also contact us for more information.

Paint-Stained Seats May Be Made Like New

NEW YORK, Feb. 25.—(AP)—Each chair seat, in their natural color, are sooty beautiful. They stand well with any other color in a room and they're being shown a great deal in the better furniture shops.

But perhaps you've fallen heir to some rush-bottomed chairs that have been painted or varnished. Maybe you have painted them over yourself—it need to be done, to save wear and tear on the rush. If you'd like to restore them to their natural beauty, don't despair, it can be done.

First, tape the chair frame around the rush seats, to protect the wood, then apply a coat of flat white paint to the rush and let it dry a least twenty-four hours. Wipe the paint well into the rush as you go along, using a moderately stiff brush that's not too large. Give it a second coat of the flat white, possibly a third one to insure a good working surface. This is important, if you want good results. And be sure to let it dry thoroughly each time!

From a tube of burnt umber oil paint squeeze a small quantity into a small jar, with some thinner and mix well. Take a clean brush and wash this color over a small part of a board that is painted white, just to try out the color. If it is too dark, add more thinner, until it is just right after painting.

Wash your brown mixture in right, wash it over the chair seat, being careful to cover all the white. Work quickly. When the surface is just damp, but not dry

Seminole County Court Records

Real Estate Conveyances
 Knight, Fredland et ux to H. S. Arnold et ux.
 Slay, V. H. et ux to W. E. Kirchhoff, Jr.
 Kirchhoff, W. E. Jr. et ux to C. S. Lee.
 Florida Groves Company to Laban E. Brown et al.
 Brown, Laban E. et al to C. S. Lee.
 Booth, Robert H. et ux to Karl G. Soderblom et ux.
 Douglass, E. A. Atty for Ejobom Heirs to Jacob A. Bolding.
 Arnold, H. S. et ux to Nancy F. Frain.
 South Atlantic Co. to Lake Charm Fruit Co.

Not enough excitement in your life?
 You'll have plenty of it if you read such books as

"WATCH FOR THE DAWN" by Cheate
 "ROGER MALIN" by Hensheller
 "NEW ADVENTURES OF ELLERY QUINN"
 "WESTERN UNION" by Russ Gray
 "THE SHIP FOWLER" by Wladimir
 "TIFFANY TRAYNERS TREK" by MURKIN
 "LET THE PEOPLE SING" by F. B. Rothwell
 "DRY GILLOTINE" by Rothwell

Come in and "browse"—you'll find lots of other books that will give you many a thrilling hour! The best new books are added as published.

THE READ SHOP
 215 W. 1st St.

Chesterfield's Twin Pleasures are Real Mildness and Better Taste

You can't mistake the extra pleasure you get from Chesterfields. Because of their right combination of the world's best cigarette tobaccos, Chesterfields give you a cooler, better-tasting and definitely milder smoke.

You can't buy a better cigarette

Jack and Bob
 Healthy

Export-Import Bank Capital Hike Approved

Senate Completes Congressional Action On Bill To Assist Finland And China

Roosevelt OK Said Assured

Barkley Narrows Program For Session To Three Major Items

WASHINGTON, Feb. 29. (AP)—The Senate today completed congressional action on a bill to increase the capital of the Export-Import Bank, making possible additional loans to Finland and China.

Roosevelt Record—After Seven Years

Table with 4 columns: UNEMPLOYMENT, PUBLIC RELIEF, NATIONAL DEFENSE, GOVT. EMPLOYEES, NATIONAL DEBT, NATIONAL INCOME. Rows for 1933 and 1940 (Est.) with corresponding figures.

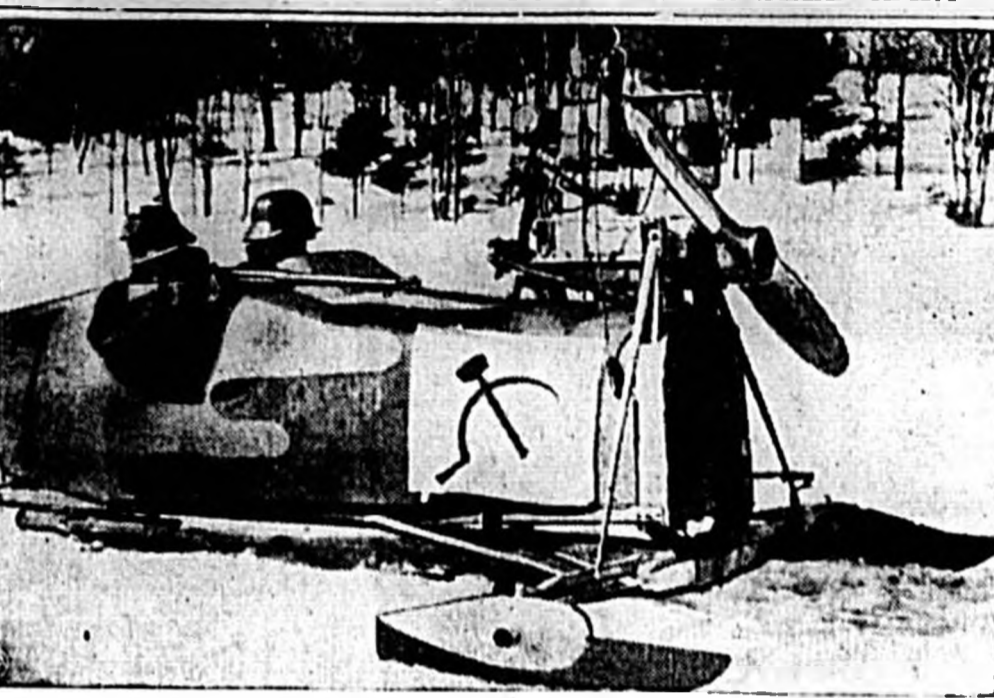
Here's a picture story of the Roosevelt record in six major divisions, showing how the situation today compares to that when he took the office on March 4, 1933.

Odd Weather Felt In Much Of Country

Floods Hit Pacific Coast As Snow Prevails In North And Sun In South

A jodge-podge of widely varying conditions marked the nation's weather today. Continued rain swelled floods in California as floods and damaging winds swept across the Pacific northwest.

GUARDSMEN EMULATE RUSSIAN WAR SLED IDEA



Military value of motor-driven sleds used by Russia is probed by Richard Ferris and Kenny Jason, Cohasset, Mass., national guardsmen, who built themselves a war sleigh, complete with hammer and sickle.

Red Armies Smash Close To Viipuri

Russians Announce Six Small Finnish Towns Taken; Defense Stubborn

Finns Say Heavy Damage Inflicted

French Prepare For Food Rationing, Other Measures

By Associated Press—Three months after invading Finland, and one month after starting a re-doubled isthmus offensive, the Red army smashed closer to Viipuri, bringing the first major Finnish city almost within Russia's grasp.

Chase Joins Group To Testify Today On Medfly Claims

Andrews Seeks Restoration Of Funds For Local Laboratory

WASHINGTON, Feb. 29.—(AP)—The United States is actively seeking the support of all nations for its view that the end of the war should also bring the end of economic autarky.

Rumania Facing Choice Between Allies, Germans

Bucharest, Feb. 29.—(AP)—Authoritative quarters here yesterday saw Rumania faced with a choice between accepting a German guarantee of her borders in return for a virtual Nazi monopoly of Rumanian trade.

Coston Convicted Of Third Degree Murder By Jury

Ex-Constable Given 20-Year Sentence; Appeal Is Planned

George Coston, ex-constable of Orange county and former Orlando police captain, was convicted of third degree murder and immediately sentenced to serve 20 years at the State Penitentiary by Circuit Judge Frank A. Smith.

13 Are Slightly Road Engineers Hurt As Luxury Train Is Derailed

All Continue Trip Within Hour After Accident Occurs

CALLAHAN, Fla., Feb. 29.—(AP)—Thirteen passengers were slightly injured today when 10 cars of the Atlantic Coastline "vacationer" was derailed about one mile south of here early this morning.

Commissioners Expect Action On County Roads During Year

A State Road Department engineer will investigate the Death Valley and attempt to find the cause for the number of traffic deaths in this section of the Sanford-Orlando highway about six miles south of Sanford.

\$24.05 More Is Given For Relief Of Finns

Although the Finns are being driven back in certain areas of the war front, their cause is still popular with the people of Sanford, who in the last week have contributed \$24.05 to the total of \$143.50 already sent to relief headquarters by the Sanford Herald.

Hill Employees Enjoy Fishing Trip To Coast

Employees of Hill Hardware Company went on a fish fry and an all day outing on the East Coast Sunday where members caught about 22 fine saltwater trout weighing from about 4 pounds to 10 1/2 pounds.

TO RATION WHISKY

LONDON, Feb. 29.—(AP)—Indirect rationing of whisky was announced in the House of Commons yesterday by Minister of Food Morrison who said the output of whisky and other potables will be restricted to one-third of last year's production.

BADMINION CLUB MEETS

All members of the badminton club were urged today to be present at a meeting tonight at the City Hall at 8:30 o'clock at which time reorganization plans will be discussed.

U. S. PLANTS BARR

OCALA, Feb. 29.—(AP)—The forest service planted 113,000 large mouth bass and 245,000 bream in lakes in the Ocala national forest during 1939. District Ranger J. W. Cooper said yesterday.

SPONGE SALES INCREASE

TARPON SPRINGS, Feb. 29.—(AP)—February sponge sales on the Tarpon Springs sponge exchange, six to all, netted \$20,425, according to figures reported today.

B. F. Paty Speaks Here This Afternoon

B. F. Paty of West Palm Beach will speak here this afternoon at 5:00 o'clock in behalf of his candidacy for governor of Florida. He will speak over a public address system at the corner of First Street and Magnolia Avenue.

SHRINKAGE LAID TO LAW

CORUNNA, Mich., Feb. 29.—(AP)—A little-publicized law of Michigan's 1939 legislature is making Corunna a shrunken city. Farm property owners living just within the corporate limits are "moving out" by filing petitions in accordance with a statute permitting such action, and so will escape municipal taxation.

LOCAL WEATHER

Fair to partly cloudy tonight and Friday; slightly cooler in extreme north portion tonight.

The Sanford Herald

Published in 1936... Monday at Sanford, Florida... 111 Magnolia Avenue

Entered as second class matter... March 2, 1907.

BOLLARD L. DEAN

Editor

WALTER DEAN - Business Manager

Subscription Rates... 50c per copy... 10c per copy...

All delivery notices... will be charged for...

Second Newspaper Representative... will be charged for...

The Herald is a member of The Associated Press... will be charged for...

THURSDAY, FEB. 29, 1940

HEALY VERSE FOR TODAY

WE CAN SAFELY TRUST... Let us hold fast the confidence of our hope...

THE DODO

When the New Statesman and Nation... Dodo in St. James' Park...

And yet, within a quarter-mile... And never wonder why or how...

New, tell me, which do you prefer...

A Dodo, or a Minister? MARY NICHOLSON

When the Kaiser ruled Germany... now Hitler says, "Me, Goering, and Gott."

The wife of Senator Nye is getting a divorce from him... he is too much of an isolationist for her.

This "Draft Roosevelt" movement would hardly seem to us to be a good idea... it might sound like the last war.

F. P. Pate, gubernatorial candidate... Florida's tax structure is out of date...

The other day we met a fellow who hasn't had a single cold this winter... Sanford Herald.

They say that Mussolini talked with Mr. Welles very much like a gentleman... What a startling innovation in authoritarian diplomacy.

The Fort Myers News-Press indicates... since Coo has announced for the Senate...

The Fort Myers News-Press says... that Holland and Whitehair are far enough out in front...

An Italian general predicts... that Europe is now beginning another Thirty Years War...

It was the growers mostly who worried on the night of January 29... But since then, it's been the railroads...

In London it is said they are sending the news washed from the press... and using it to fill newspapers...

Yampa Tribune in 1923: "Karl Lammann is the only man who can say a 40-minute speech in 18 minutes..."

It is said that the British government... is planning to restrict the export of raw materials...

London, Feb. 29 (AP)—The British government... is planning to restrict the export of raw materials...

London, Feb. 29 (AP)—The British government... is planning to restrict the export of raw materials...

London, Feb. 29 (AP)—The British government... is planning to restrict the export of raw materials...

London, Feb. 29 (AP)—The British government... is planning to restrict the export of raw materials...

London, Feb. 29 (AP)—The British government... is planning to restrict the export of raw materials...

London, Feb. 29 (AP)—The British government... is planning to restrict the export of raw materials...

London, Feb. 29 (AP)—The British government... is planning to restrict the export of raw materials...

London, Feb. 29 (AP)—The British government... is planning to restrict the export of raw materials...

London, Feb. 29 (AP)—The British government... is planning to restrict the export of raw materials...

London, Feb. 29 (AP)—The British government... is planning to restrict the export of raw materials...

London, Feb. 29 (AP)—The British government... is planning to restrict the export of raw materials...

London, Feb. 29 (AP)—The British government... is planning to restrict the export of raw materials...

London, Feb. 29 (AP)—The British government... is planning to restrict the export of raw materials...

London, Feb. 29 (AP)—The British government... is planning to restrict the export of raw materials...

London, Feb. 29 (AP)—The British government... is planning to restrict the export of raw materials...

London, Feb. 29 (AP)—The British government... is planning to restrict the export of raw materials...

Helping Finland

By a vote yesterday of better than three to one the House of Representatives passed a Senate bill authorizing an increase of \$100,000,000 in the lending funds of the Federal Export-Import Bank...

But regardless of this somewhat humorous provision, the Finns will undoubtedly be able to find some use for \$20,000,000 in their present predicament...

There is no doubt as to the overwhelming sentiment in Congress to do something for the Finns. There is no doubt that the people of the United States as a whole would like to help Finland in her brave struggle against the invading Reds...

However, we do not like this way of trying to help the Finns by slight-of-hand methods. It strikes us as being a little two-faced. Either we should make up our minds to draw back in our shells...

To give aid to Finland while trying to make out that we are not all the evidence Russia or any other country needs to know that we are afraid...

Besides, lending money to Finland at a time like this for non-military purposes is like lending money to a sick man but carefully warning him in advance that he must not use the money for any medical purposes...

Public Contact At Hospitals

The front door of a hospital is just about as important as the operating room for if proper contact with the public is not maintained at this highly vulnerable point...

The front door of a hospital, says the New York Herald Tribune, "is probably the most difficult point of contact with an outside world that any institution has to maintain..."

"In a larger sense, however, the struggle must be fought daily in every hospital. The front door of a hospital call for employees of ability, tact and sympathy..."

War Will Cause Cut In English Living Standard

LONDON, Feb. 29 (AP)—Great Britain's millions were told bluntly yesterday that the government's plan for crushing Germany...

Behind these disclosed developments British continued negotiations with Germany to keep Germany from getting more munitions...

Another military development was the landing of all non-resident civilians from northern Scotland...

LONDON, Feb. 29 (AP)—The British army is being retrained in the use of the new anti-aircraft gun...

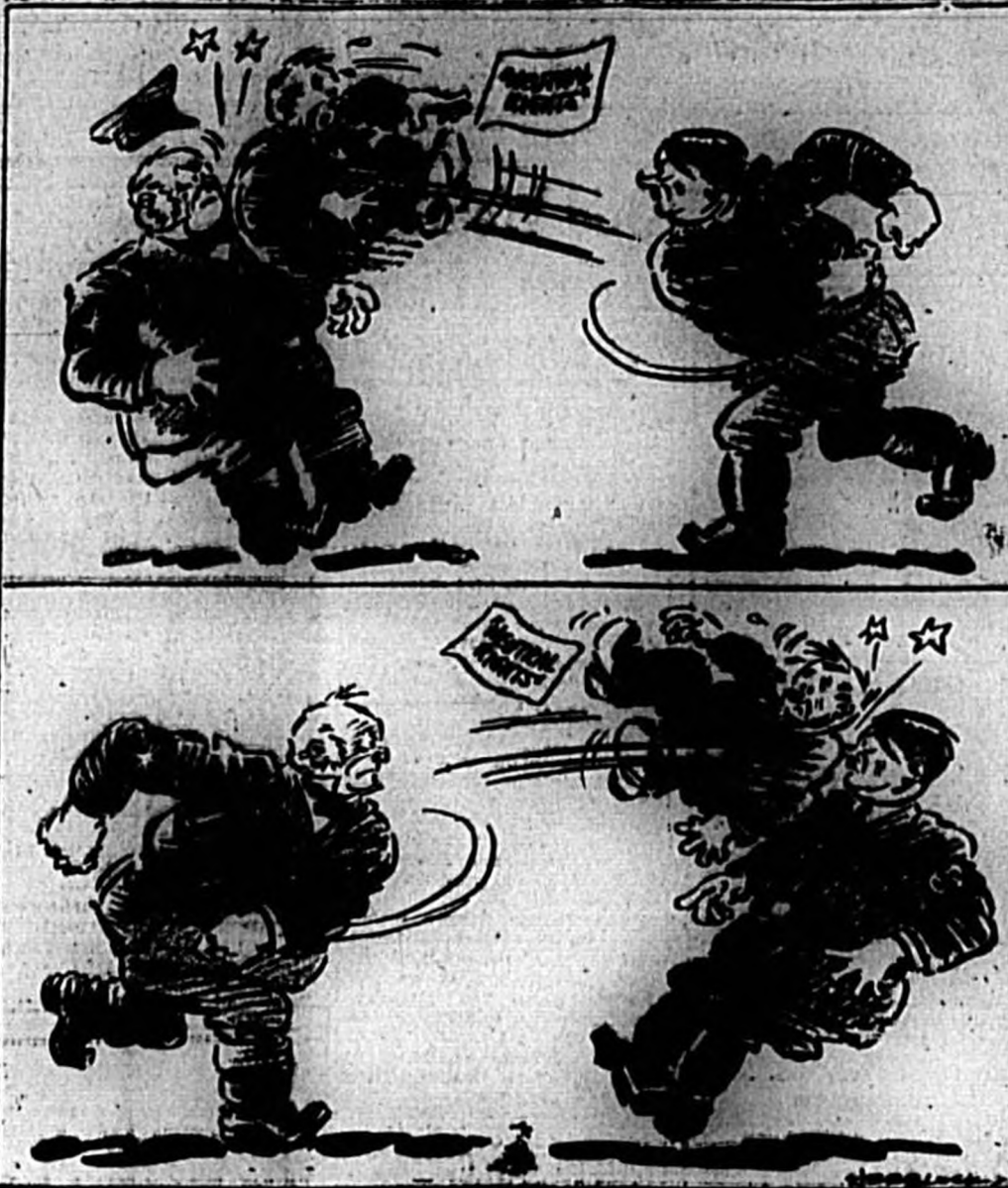
LONDON, Feb. 29 (AP)—The British government is planning to restrict the export of raw materials...

LONDON, Feb. 29 (AP)—The British government is planning to restrict the export of raw materials...

LONDON, Feb. 29 (AP)—The British government is planning to restrict the export of raw materials...

LONDON, Feb. 29 (AP)—The British government is planning to restrict the export of raw materials...

TAKE THAT!



"TOO LATE TO CLASSIFY"

PENSACOLA: Floridians who haven't visited Pensacola during the past few years should do so. They will be amazed at the development...

The town is livelier and peopled than ever, with much new construction in evidence. New industries everywhere are in evidence...

I also came to the meeting hoping to get the "low down" on the present standing of candidates for the gubernatorial and Senate races...

As this is written, reports are current that Dave Sholtz, who recently gave up the idea of running for the United States Senate...

In the Senate race, Charlie Andrews seems to be in the number one spot with Fred Gossett...

Watch for the Mayor on page three.

Andrews' Election Campaign Will Be Delayed By Work

ORLANDO, Feb. 29 — Development in Washington of a number of major matters, important to Florida, may delay opening of United States Senator Charles O. Andrews' personal speaking campaign for re-election to a full term...

Information received at the Senator's Orlando headquarters indicates, however, he may come into the State, within the next few days to attend a Senate Committee's hearing on claims of Florida growers and farmers for more than \$7,000,000 in damages sustained during the 1923-1936 Mediterranean fruit fly campaign...

WANTED! Used Furniture of all kinds for cash or liberal trade-in allowance. MATHER Furniture Company

For carefully compounded prescriptions, let us be your druggist. For an excellent breakdown of the disease or support at a reasonable rate come to City Drug Co. 204 E. 1st St.—Phone 375

Easter WILL BE HERE IN THREE WEEKS! NOW IS THE TIME FOR YOU TO SELECT YOUR NEW SPRING SUIT! New Spring Patterns IN CURLEE CLOTHES FOR MEN. AWAIT YOU AT PURCELL'S. Cabardines, Worsteds, Tropicals, Greens, Blues, Greys & Tans. Double and Single Breasted. All sizes and models. \$19.50 UP. PURCELL CO. "We Clothe The Family—We Furnish The Home" 406 Sanford Avenue Sanford, Florida

SKY RIDERS SHOES FOR BOYS Sizes 1 to 6. "Just Like Dad's" \$2.45 to \$3.00. B. L. PERKINS CORRECT MEN'S WEAR

See The NEW HOUSE Now Under Construction! Located At 207 West 17th Street on a lot 90 feet front by 122 feet deep. F. A. Dyson - Contractor 201 WEST 17th STREET TELEPHONE 727

FOR COURTEOUS, EFFICIENT SERVICE AND CAREFULLY CLEANED CLOTHES. SEMINOLE DRY CLEANERS 200 MAGNOLIA AVENUE

Social And Personal Activities

MISS LILLIAN ADAMS, Society Editor

Telephone 148

Social Calendar

THURSDAY

Third Annual Founder's Day Program of the Parent-Teachers Association of Seminole County will be given at 8:00 P. M. in the auditorium of the Seminole High School. The public is invited to attend.

Townsend Club will hold its weekly meeting at 7:30 o'clock in the Court House. The public is cordially invited to attend.

FRIDAY

Baptist W. M. U. will hold an all-day meeting in observance of the First Baptist Church of Sanford's 75th anniversary at 8:00 P. M. in the church with Mrs. B. R. Beck in charge.

Sunday School Workers' Supper of the First Baptist Church will be held at 6:30 P. M. in the church annex.

American Legion Auxiliary will hold its regular meeting at 7:30 P. M. in the Legion Hut on the lake shore.

The third in the series of **Junior Dances** sponsored by the Junior Woman's Club for the younger set between the ages of 11 and 15 will be held from 6:45 P. M. until 10:00 P. M. in the Woman's Club on Oak Avenue.

Tourist Club will have its weekly bridge and Chinese checkers party at the Chamber of Commerce building on the lake shore, beginning at 7:30 P. M. All winter tourists and local persons are cordially invited to attend.

MONDAY

Program for the Baptist W. M. U. observance of Annie W. Armstrong Week of Prayer will be in charge of Mrs. J. H. Colclough at 3:30 P. M. in the church.

Woman's Missionary Society members of the First Methodist Church will be held as follows:

- Circle One will meet with Mrs. R. F. Crenshaw, 1133 East Seventh Street at 3:00 P. M.
- Circle Two will meet with Mrs. W. M. McKim, 212 West Eighteenth Street, at 3:00 P. M.
- Circle Three will meet with Mrs. A. D. Shoemaker, 1701 Park Avenue, at 3:00 P. M.
- Circle Four will meet with Mrs. Roby Loring, 226 Elliot Avenue, at 3:00 P. M.
- Circle Five will meet with Mrs. Robert Cole, Twelfth Street and Elm Avenue, at 7:30 P. M.
- Circle Seven will meet with Mrs. L. M. Swain, 1109 East Fourth Street at 3:00 P. M.

TUESDAY

Program for the Baptist W. M. U. observance of Annie W. Armstrong Week of Prayer will be in charge of Mrs. J. C. Mitchell at 3:30 P. M. in the church.

Alathan Class of the First

PTA Founders' Day Program Is Tonight

The public has been extended an invitation by the Seminole County Parent-Teachers Association to attend the third annual Founder's Day program tonight at 8:00 o'clock in the auditorium of the Seminole High School.

Platform guests for the program will be the presidents of the various associations in the county. Mrs. C. D. Koontz, president of the Seminole County Council is in charge of the program which will be given with the combined talent of several towns belonging to the council.

Mrs. E. L. Holch of DeLand, regional vice-president of this state, will deliver the principal address. Several other state officers are also expected to be in attendance.

Junior Women Give Dance Tomorrow

Continuing in its series of junior dances, sponsored monthly by the Junior Woman's Club for the enjoyment of the ages of 11 and 15, the third dance will be given tomorrow evening from 6:45 to 10:00 o'clock in the main club room of the Woman's Club on Oak Avenue.

Free instruction is given by Ruth Gordon Wright beginning at 6:45 o'clock for those just beginning or those needing any special help. Particular attention is given to those just learning to dance, and these are especially urged to attend the dances.

Mrs. W. R. Williams and Mrs. John Edward Higgins will act as chaperones at tomorrow evening's dance.

Tourist Club Will Hold Weekly Parties

The second in a series of weekly bridge and Chinese checkers parties sponsored by the Tourist Club will be held tomorrow evening beginning at 7:30 o'clock in the Chamber of Commerce building on the lake front.

The parties are held mainly for the entertainment of winter visitors but anyone is welcomed at the parties. The small script goes toward a set of end tables which the club plans to leave in a gift to the Chamber of Commerce building where its meetings are held.

Young To Command Tampa Army Airbase

WASHINGTON, Feb. 29.—(AP)—Lieut. Col. Harry H. Young left yesterday for Tampa to take command of MacDill field, the army's new southeast air base.

Young has been on duty in the office of the chief of air corps. He entered the army during the World War.

Traveling by automobile he planned a 10-day vacation before taking his new post.

Lieut. Col. Lynwood B. Jacobs, air corps officer already at the base, is on a special assignment as technical adviser to the constructing quartermaster.

Officials said Young would command an advance detachment at the base, and presumably would be superseded by a higher ranking officer when the permanent garrison is on duty there.

Baptist Church will hold its regular business and social meeting in the church annex at 7:30 P. M. with Mrs. C. C. Cox, Mrs. Robert Meriwether and Mrs. O. G. Roller as hostesses.

WEDNESDAY
Program for the Baptist W. M. U. observance of Annie W. Armstrong Week of Prayer will be in charge of the Baptist Brotherhood at 7:30 P. M. in the church.

HAPPY BIRTHDAY
Miss Doris Batters

HOLLAND
His confidence is good
where he is placed upon his
intelligence, integrity
and conscientiousness as
qualifications for the
position—Lubbock
Lubbock.

Personals

Mr. and Mrs. Gordon S. Mobley and daughter, Miss Mary Mobley, of Jacksonville, who have been the house guests of Mr. and Mrs. E. D. Mobley, left this morning for a two week visit to Panama City. They will return to spend some time here.

Mrs. Maude Wood of Jacksonville, state co-ordinator of trade and industrial schools, spent yesterday and today in Sanford. Today she visited the local vocational training school of which Mrs. R. C. Maxwell is instructor.

Friends of G. E. McKay will be glad to learn that he has recovered from a recent illness and is able to return to his duties as principal of Seminole High School.

Mrs. John Schirard, Jr., and her sister, Mrs. James Ray of Jacksonville, who has been visiting here, motored to Bartow today with Mrs. Robert Pittman, Jr., and sons, Robert III, and Ben. Mrs. Pittman and children were returning to their home after visiting here for several days with relatives.

Friends of Rick Gillette will be glad to learn that he has recovered from a brief illness.

Miss Helen Wilkinson plans to leave this afternoon to visit about two weeks with her mother and aunt, Mrs. A. C. Beiler, at their home in Jacksonville.

Ralph Dean is spending the afternoon in Orlando on business.

Mr. and Mrs. J. S. Thorpe of Short Hill, N. J., are expected to arrive today to visit as the guests of Mr. and Mrs. A. D. Shoemaker and Mr. and Mrs. A. K. Shoemaker.

Friends of Mrs. M. B. Smith will regret to learn that she is ill at her home in San Louis.

Miss Martha Telford plans to leave Saturday for Gainesville where she will attend the annual Military Ball of the University of Florida.

Miss Margaret Anley plans to spend this week-end in Gainesville where she will attend the annual Military Ball at the University of Florida.

Dr. and Mrs. J. M. Tabor left this morning for Chapel Hill, N. C. where they will spend several days with their son, Ralph, who attends the University of North Carolina.

Friends of Herbert Daughlas will regret to learn that he is ill in his home on West Eighth Street.

Mrs. George C. Heising, house guest of Mr. and Mrs. S. O. Clayton, for the past two weeks, left Monday for Columbus, S. C. She was accompanied by her son-in-law and daughter, Mr. and Mrs. S. L. Rouse, who drove down from Columbus to accompany Mrs. Heising home.

Florida Women's Clubs Will Hear Mrs. Hiram Cole

NEW SMYRNA, Feb. 29.—Mrs. Hiram Cole Houghton, Jr., of Iowa, member of Iowa State Board of Education and General Federation of Women's Clubs Director, will be one of the principal speakers at the annual convention of the Florida Federation of Women's Clubs in Sarasota Mar. 26-29.

A graduate of Wesley College, Mrs. Houghton has been a prominent worker in educational circles in her home state for many years, and has built up an enviable reputation as a speaker. She has lectured in 17 states at district and state conventions of education, and has attended board meetings in Washington for the past five years.

Today she visited the local vocational training school of which Mrs. R. C. Maxwell is instructor.

Friends of G. E. McKay will be glad to learn that he has recovered from a recent illness and is able to return to his duties as principal of Seminole High School.

Mrs. John Schirard, Jr., and her sister, Mrs. James Ray of Jacksonville, who has been visiting here, motored to Bartow today with Mrs. Robert Pittman, Jr., and sons, Robert III, and Ben. Mrs. Pittman and children were returning to their home after visiting here for several days with relatives.

Friends of Rick Gillette will be glad to learn that he has recovered from a brief illness.

Miss Helen Wilkinson plans to leave this afternoon to visit about two weeks with her mother and aunt, Mrs. A. C. Beiler, at their home in Jacksonville.

Ralph Dean is spending the afternoon in Orlando on business.

Mr. and Mrs. J. S. Thorpe of Short Hill, N. J., are expected to arrive today to visit as the guests of Mr. and Mrs. A. D. Shoemaker and Mr. and Mrs. A. K. Shoemaker.

Friends of Mrs. M. B. Smith will regret to learn that she is ill at her home in San Louis.

Miss Martha Telford plans to leave Saturday for Gainesville where she will attend the annual Military Ball of the University of Florida.

Miss Margaret Anley plans to spend this week-end in Gainesville where she will attend the annual Military Ball at the University of Florida.

Dr. and Mrs. J. M. Tabor left this morning for Chapel Hill, N. C. where they will spend several days with their son, Ralph, who attends the University of North Carolina.

Friends of Herbert Daughlas will regret to learn that he is ill in his home on West Eighth Street.

Mrs. George C. Heising, house guest of Mr. and Mrs. S. O. Clayton, for the past two weeks, left Monday for Columbus, S. C. She was accompanied by her son-in-law and daughter, Mr. and Mrs. S. L. Rouse, who drove down from Columbus to accompany Mrs. Heising home.

English Are Cagy About Mentioning Weather Conditions

LONDON, Feb. 29.—(AP)—Because, bombers depend on the weather the wartime censorship bars any timely reference to it. And sometimes, because of this, even the irrepressible conversation about the weather takes on a whimsical tone of "hash-hush."

"In England, as is well known, we now have no weather," began a London Times writer.

Then he showed what weather words mean to the non-weather language.

"A wonder, sometimes, what in the wind, and tell ourselves resolutely that it never rains but it pours. We shower congratulations, thunder abuse, and subject our opponents to a hail of criticism. If we are lucky enough to be in the sun of popularity, we are snowed under by an avalanche of invitations; but when we accept one of them we must be careful to break the ice as soon as possible, otherwise the party will be a frost, and—quick as lightning—our popularity will melt away and we shall leave behind us upon a flood of adverse criticism."

Seventy-five community trusts administered charitable funds in the United States during 1939, aggregating \$50,000,000.

The famous "Long Parliament" in England met on November 3, 1640, and was finally dissolved by Cromwell April 20, 1653.

Roy Stumard Baker, the author, first attracted attention by his reportorial work on the march of "Cozy's Army" in 1894.

Approximately 2,000 research laboratories in the United States are working on the distinctive qualities of alloy metals.

Mae West, of "Come up and see me some time" fame, made her first public appearance at the age of five in a church social.

Come THIS Sunday!

See the World's Largest Collection of Azaleas ... now in Gorgeous Bloom



You'll never forget the glowing charm... the amazing beauty of this sylvan gorge now brilliant with the flame of 105,000 azaleas and countless thousands of other tropical plants. Eighty-five acres of breath-taking splendor... superbly landscaped gardens far below the earth's rim await you here.

Charming footpaths, motor roadways, and rustic bridges make every lovely nook comfortably accessible. Plan to see Ravine Gardens at this, their loveliest season. Just an easy day's drive from any part of Florida. Consult your road map for shortest route.

Admission \$1.00 including tax.

Palatka Ravine Gardens PALATKA, FLORIDA

Rolling Along Tourist Notes

The first outdoor picnic of the Tourist Club was held Tuesday at Frank Evan's Lake Mary Park when members enjoyed an all-day outing featured by a baseball game between two teams, each composed of six men and three women.

Highlight of the game was furnished by a Sanford woman who was so surprised when she fumbled the ball out of the lot that she stood still forgetting to run until she was tagged out. A Lake Monroe man, who occupied first base as the result of a hit, lost a squarely incoming while another member of his team batted the ball for a long hit and ran past the man on first on to another base.

With the score at seven all, the game was called at the second inning when someone suggested "look about the cats." The game was called by umpire Aldrich who kept the two teams in order. Thrills were had by all as they rode in Frank Evan's speed boat across the lake. The group also took a trip to the alligator pond.

After an enjoyable day spent in open, many members remained to attend the card games at the Lake Mary Chamber of Commerce.

Friends of Carolyn Patrick will regret to learn that she is ill at her home in Loch Arbor with chicken pox.

Anniversary sale in the history—see page four.—Adv.

TRITZ

LAST TIMES TODAY

WINTER OF 1940

SANTA FE MARSHAL

—ALSO—
"Vatican Of Pius XII"
Presented By
MARCH OF TIME

Friday & Saturday DOUBLE PROGRAM

SANTA FE MARSHAL

HOLLAND

DOWN TO BRASS TACKS!

Tops in value! A big luxurious 1940 Packard Sedan delivers here* for a down payment of only... **\$365**

Easy to own! 4 times out of 5 the car traded in exceeds the down payment, further reducing the low monthly payments. Get an appraisal on your car today. Own this stunning 1940 Packard that's sky-high in value—and rock-bottom low in upkeep.

PACKARD
ASK THE MAN WHO OWNS ONE

*delivered in Sanford

SOMEWHERE THERE IS SUMMER



And, if you're getting set for it, consider this preview of 1940 Palm Beach Suits and Slacks. Tailored for leisure.

And, when we say "tailored," that's just what we mean. You'll note it in the flattering cut—in the broad shoulder—in the easy drape and leisurely lines. No washable suit in the world can smarten you appearance and quicken your pride like the 1940 Palm Beach.

Now showing in the new Whites, Tans, Blues and Greys.

Tailored by ARDALL Palm Beach

PALM BEACH SUITS \$16.75
BLACKS \$5.00—STUDENT SUITS \$15.50

The YOWELL Co.
SANFORD, FLORIDA

Clever Cooks Must Appeal To Eye And Palate

By MRS. ALEXANDER GEORGE
NEW YORK, Feb. 23.—(AP)—
Appeal to the eye as well as the palate—that's what clever cooks are doing.

Little garnish tricks give brightness to the plainest of meat and fish dishes. A frilly green, a gayly colored vegetable or a spray fruit adds sparkle to the piece de resistance.

Shiny, browned apricots are just made for pan-broiled pork chops or veal steak. When the meat is nearly done cover it with apricot halves (hollow sides down), sprinkle with brown sugar and a little lemon juice and cinnamon. Broil or bake until the apricots are well glazed—it will take about 10 minutes. Baste 3 times with apricot juice or any other juice.

Codfish balls, fish loaves or timbales are set off by lemon cups filled with relish, salad or sauce. Save the lemon shells after cooking, notch the edges for a fancy touch, and fill with a piquant cabbage salad for codfish balls, pickle relish for fish loaves and olive tomato sauce for timbales. Top each with a parsley sprig or some cross.

Beet cups filled with horseradish pickle blend, make grand partners for steak. Cook radium-sized beets. When cool, remove and dice the centers and mix in some horseradish, pickle and salad dressing. Fill the beet cups when ready to serve the steak.

Certain meats seem to need the tartness supplied by glazed fruits. For something really delicious brown 6 slices of fruit (pears, peaches, pineapple or plums) in 2 tablespoons of fat, heated in a frying pan. Pour in 1-4 cup orange juice, 2 tablespoons lemon juice and 1-3 cup brown sugar. Slip under the broiler or in the oven for 5 minutes to cook through. Center each with a cube of currant, cranberry or mint jelly and circle a platter of fried chicken, broiled ham or roast of lamb.

Hot carrot strips, latticed beets and turnip balls dusted with chopped parsley or cream are possible garnishes that supply vitamins as well as color contrast. They go very well with creamed meats, meat loaf, broiled steaks or broiled fish.

Bananas can be used as a potato substitute as well as a garnish for steak, roasts or meat cakes. Dip peeled bananas in orange juice with a little lemon juice in it (1 tablespoon of lemon for each 4 of orange). Sprinkle with brown sugar and a small amount of mace. Broil or bake for 10 minutes. Baste several times with meat drippings.
HAM AND GLAZED GRAPES
Remove rind from a slice of



WILLIAM BIOFF, Hollywood movie labor leader, is shown following Assistant Superintendent Peter Kilminski to a cell in Chicago's Bridewell jail where he will complete a six-month sentence for pandering imposed in 1932. Bioff first resigned as chairman of the Conference of Studio Unions.

Home Demonstration Notes

By REVA D. ANDREWS

Communities can accomplish seemingly impossible feats. Home demonstration women working together in club groups offer proof of this fact year after year. In 1939, in 10 Florida counties, 38 community buildings were constructed through the resourcefulness of home demonstration groups who recognized the need for recreation facilities to keep their young people interested in the social life of their own communities.

Everyone in the community was given an opportunity to contribute to these buildings. Some one gave the land, perhaps another gave timber, and the local sawmill cut it on shares. In some instances, old houses were given to the community. Men have given labor. Women have given entertainments. Young people have put on plays. Members of the community who have never taken part in community affairs have given their services or means and found themselves interested.

Juicy-cured ham which is half an inch thick. Heat a copper-plated stainless steel frying pan very hot and place ham there to brown quickly on both sides. Cover with a lid. Lower heat and cook 20 minutes. Add two tablespoons of boiling water if ham seems quite dry while cooking.

Grapes may be prepared while the ham is frying. To glaze, make a sugar-walnut syrup, using one cup of sugar to one-half cup of water; add a few cloves to taste, drop in the grapes and when syrup has thickened and grapes are glazed to your liking, put them around the ham . . . and supper is served.

Of Sanford—see page five —Adv.

Move To Reduce Cuba's Quota Of Sugar Blocked

WASHINGTON, Feb. 23.—(AP)—
A plan to reduce Cuba's share of the national sugar marketing quota by 200,000 tons was declared yesterday to have encountered resistance from the Administration.

Representative O'Connor, Democrat, Montana, a member of the Senate-House committee of five drafting new sugar legislation, said after a conference with Secretary Wallace: "I feel that we have a big job ahead of getting him (Wallace) to cooperate in taking anything away from Cuba."

As a means of boosting mainland production, the sugar committee agreed tentatively to trim down the import quota from Cuba and to take 60,000 tons from the Philippine share. The latter reduction would be the equivalent of the so-called "Philippine deficit."

The Philippine independence act prevents the islands from marketing in this country the full amount allowed under their quota. The committee proposed to give mainland producers the advantage of this deficit, emphasizing it did not amount to an actual cut in the Philippine share. It has also been reliably reported that the Administration preferred to abandon present efforts to write new sugar legislation. It was said agriculture department officials might ask instead that Congress pass a resolution simply continuing for another year the existing sugar act, which expires at the end of this calendar year. Members of the sugar bloc said they would not agree to a resolution continuing the present sugar act. They insisted it was essential to find some means of increasing domestic planting.

Other vegetables may be used in same way. Cut peppers in two lengthwise, to taste 1 cup white sauce made from 1 cup milk, 2 tablespoons flour, and 2 tablespoons butter. Add carrot, onion, and seasoning to white sauce, the beaten yolks. Fold in stiffly beaten whites. Cook in top of double boiler over hot water.

Tomatoes, egg plant may be stuffed in similar fashion and baked. Cut egg plant in one-inch slices, pare, and drop in salted water while preparing. Drain, parboil two or three minutes, and drain. Hold up in buttered baking dish. liberally with a mixture of egg plant, tomatoes, and stale bread crumbs, seasoning each layer with bits of butter, pepper and salt. Cover with buttered crumbs and bake in moderate oven.

Grated cheese may also be added. With cheese, this can be used as a main luncheon or supper dish. The salad is one of the most important features of the menu. By means of the salad, it is possible to have in the daily menu some fresh vegetable, especially some leafy green vegetable. There is an endless number of salads made of vegetables alone or in combination with meat, fish, eggs, or fruit. This is an opportunity for the women in the home to use her ingenuity. Requirements: 2 tablespoons vinegar or lemon juice; 6 tablespoons salad oil, 1-2 teaspoon salt, and paprika. Put oil and seasonings in cold dish, add vinegar, and beat until all is thoroughly broken up.

Fancy Baby Beef Sale		FRIDAY ONLY	
Round lb.	21c	KRAFT'S VELVETTA Cheese 2 lb. box 39c	
Sirloin lb.	21c	COOKING Apples 10 lbs. 15c	
Chuck lb.	17c		
Rib Stew lb.	10c		

PURE LARD 3 lbs		22c	SKINLESS FRANKS lb		12 1/2c
-----------------	--	-----	--------------------	--	---------

PORK SALE		Georgia Brand, Tender Sugar Cured	
Hams lb.	14c	Liver lb.	8 1/2c
Shoulders lb.	9 1/2c	Backbone lb.	13 1/2c
Sides lb.	8 1/2c	Heads lb.	4 1/2c

Dressed HENS Ea.		59c	Boiling BACON lb.		5 1/2c
------------------	--	-----	-------------------	--	--------

Pan SAUSAGE lb.		10c	Cream CHEESE pkg.		5c
-----------------	--	-----	-------------------	--	----

Picnic HAMS lb.		12 1/2c	Kingan's Sliced BACON lb.		18c
-----------------	--	---------	---------------------------	--	-----

SUGAR		with purchase 10c Pk: Tea or Spice		5 lbs. 17c	
-------	--	------------------------------------	--	------------	--

FLORIDA ICEBERG LETTUCE 2 for		9c	YELLOW COOKING ONIONS 3 lbs.		9c
-------------------------------	--	----	------------------------------	--	----

FANCY IDAHO BAKING POTATOES		19c	REAL JUICY ORANGES doz.		15c
-----------------------------	--	-----	-------------------------	--	-----

OLD FASHION WINESAP APPLES 5 lbs.		21c	MARSH SEEDLESS GRAPEFRUIT		3c
-----------------------------------	--	-----	---------------------------	--	----

FRESH CUT BROCCOLI lb.		9 1/2c	FARMER'S CABBAGE lb.		1 1/2c
------------------------	--	--------	----------------------	--	--------

RILEY'S COFFEE lb.		23c	ARMOUR'S VEGETOLE		35c
--------------------	--	-----	-------------------	--	-----

FUT. HONDURAS RICE 4 lbs.		17c	SALLY ANN BREAD lge.		7c
---------------------------	--	-----	----------------------	--	----

NO. 1 HONOLULU FRUIT COCKTAIL		10c	2 1/2 SILVER PLOW KRAUT 3 for		25c
-------------------------------	--	-----	-------------------------------	--	-----

NO. 1 FARD DOG FOOD		15c	W. G. MEAL 4 lbs.		7c
---------------------	--	-----	-------------------	--	----

OXYDOL giant large		59c	NO. 2 STD. TOMATOES		4 1/2c
--------------------	--	-----	---------------------	--	--------

Lux Toilet SOAP		5c	TAMPA MAID Macaroni & Spaghetti		4 FOR
-----------------	--	----	---------------------------------	--	-------

BIBB'S BABY FOOD		15c	Lge. Box Matches		10c
------------------	--	-----	------------------	--	-----

PEERY'S CRACKERS lb.		17c	1 1/2 Lb. Ctn. Salt		10c
----------------------	--	-----	---------------------	--	-----

HURFF'S QUALITY MERCHANDISE		Peanut Butter		15c
-----------------------------	--	---------------	--	-----

2 1/2 Hurff's Hammy 2 for		15c	PILLSBURY'S BEST FLOUR 5 lbs.		27c
---------------------------	--	-----	-------------------------------	--	-----

Triple "S" Groceteria

ALL TALL MILK 3 for	17c	Sugar 5 lbs.	23c	LARD ctn.	35c
5 Lbs. Swansdown Plain Flour 25c					
CARROTS 10c	CABBAGE 3c	ONIONS 10c			
Pure Pork Georgia Style SAUSAGE lb. 19c					
GA. BABY BEEF					
STEAKS lb.	19c to 29c	Smoked BACON	15c		
ROASTS lb.	15c to 25c	White BACON	lb. 5c		
STEW 3 lbs.	25c	Pork SIDES lb.	7 1/2c		
Breakfast BACON 19c					
Pork SHOULDERS 10c					
MATCHES 3 for 10c					
Fla. EGGS 24c					

Oct. Soap or Powder

START THE DAY RIGHT WITH A STEAMING BOWL OF THESE MORE DELICIOUS OATS

NATIONAL 3 MINUTE OATS

Illustration of a woman's face, likely for a cosmetic or health product advertisement.

Miracle Whip 29c

2 for 17c

LARGE CALIF. LEMONS doz.		19c
FANCY WESTERN WINESAP APPLES 4 lb.		25c
SNOWBALL Cauliflower lb.		7 1/2c
RED BLISS Potatoes 10 lbs.		15c

No. 2 Tall Van Camp's Pork & Beans		25c
DANDY LIME MILK tall		6c
GIBB'S CATSUP 14 oz.		9 1/2c
2 1/2 TALL MILFORD CORN on COB		15c
NO. 2 SILVER PLOW Pie CHERRIES		10c

JUST-SITE FLOUR 24 lbs.		69c
DOW ROSS BLEN Sugar PEAS		10c
NO. 1 TALL HONOLULU Ripe OLIVES		15c
FANCY BLUE ROSE RICE 4 lbs.		13c
FRESH Fla. GRAHAM A LOG Eggs doz.		23c

Med. Heinz Asst. Soups 2 for		25c
NO. 1 HOLLY CORNED BEEF		14 1/2c
NO. 2 DRY BEANS 2 for		15c
STIFF BREAD FLOUR TISSUE 3 for		10c

lb. 18c			
---------	--	--	--

Breakfast Party Is Suggested For Easter Morning

By MRS. ALEXANDER GEORGE
NEW YORK, Feb. 29 (AP)—You can get Easter off to a joyful start if you give a breakfast party for the family or friends.

Have the table sparkle with the symbols of Easter that herald the coming of Spring—gay blossoms, fluffy chicks, pink-eared bunnies and eggs in rainbow colors.

Menus should get heartier as the day advances, so you'll have to regulate your menu by the hour of your breakfast.

An assorted trayful of juices and fruits delights the guests and allows them individual choices. Always serve appetizers very cold.

You can dress up your cereals, too. Sprinkle cooked cereals with chopped figs, shaved brown sugar or raisins. Fill ring moulds with cooked cereal, heat it in a moderate oven, un-mould and fill the centers with prunes, apricots or sliced bananas mixed with raisins. Stuff baked fruits—peaches, peckles, apples or apricots—with cooked or prepared cereals and pass honey or maple syrup for the sweetening. Youngsters will love to have their cereal served in Easter egg shells with tiny chicks perched nearby.

BRAZIL NUT BREAD
2 cups sifted flour
1/2 cup orange juice
1/2 cup sugar
1/2 cup melted butter
1/2 cup grated orange rind
1/2 cup baking powder

University To Hold Scout Leader Meet

GAINESVILLE, Feb. 29—Approximately 100 men, Boy Scout leaders in Florida and South Georgia, are expected at the University of Florida Friday for a three-day Scout Leader Training Institute, sponsored jointly by the Boy Scouts of America and the university's General Extension Division.

The institute will provide for three days of intensive study and discussion of the problems of boy leadership as they relate to scouting, officials said.

Following the close of the institute on Sunday, first such conference ever held on the campus, a three-day seminar for scout executives and their assistants will also be held here.

Who said high scores were dominating present-day basketball play? In the University of Florida campus-wide championship tourney, one semi-final game was a grueling affair which concluded with a 7-8 score.

or crisp bacon in the batter before it is baked—of course neither ham nor bacon should then be served in any other part of the menu. For a sweet touch, add some chopped figs, dates or candied pineapple to biscuit dough, scones or waffles.

Browned mushrooms on broiled tomatoes surrounding a platter of fried eggs and ham is a great favorite in certain sections. Why not try it this year on your family? It's great. Pass Graham or bran muffins and orange marmalade.

For new editions of popovers, muffins, biscuits or cornbread, put some chopped cooked ham

Piggly Wiggly Will Celebrate Birthday

The twenty-first anniversary of the Winn and Lovett Grocery Co., operators of Piggly Wiggly and Lovett stores, is being celebrated for one week starting Friday and continuing through Thursday of next week.

According to Robert Pickett, local manager, the sale will represent several months of planning, and he reports that buyers in all departments of the organization have been scouring the nation for "outstanding buys" and that national manufacturers have co-operated in featuring advertised brands at "birthday" offerings. He said that merchandise by train, boat and truck has been rolling through the huge Jacksonville distributing

plant to the 78 stores located in the 50 Florida and South Georgia cities where Winn and Lovett operates.

Mr. Pickett extended a special greeting to the public to participate in the big event.

The flag acquired its present form in Spain in the sixth century. Before that it was small and square.

Here's a new food stunt that will go over well for a luncheon or snack after cold outdoor sports: Place thin slices of picnento cheese in dishes and fill the dishes with steaming cream of celery, pea or tomato soup. Sprinkle with chopped parsley and accompany by hot buttered

rolls. With a relish or cabbage salad you have a beauty repeat that will hit the spot.

CHEESE UNDER SOUP

Here's a new food stunt that will go over well for a luncheon or snack after cold outdoor sports: Place thin slices of picnento cheese in dishes and fill the dishes with steaming cream of celery, pea or tomato soup. Sprinkle with chopped parsley and accompany by hot buttered

rolls. With a relish or cabbage salad you have a beauty repeat that will hit the spot.

At FOREST GATCHEL'S grocery—see page six

At FOREST GATCHEL'S grocery—see page six

MILK—CREAM BUTTERMILK—ICE CREAM

At FOREST GATCHEL'S grocery—see page six

At FOREST GATCHEL'S grocery—see page six

At FOREST GATCHEL'S grocery—see page six

At FOREST GATCHEL'S grocery—see page six

SEMINOLE CREAMERY CO.

315 E. FIRST ST. SANFORD

315 E. FIRST ST. SANFORD

315 E. FIRST ST. SANFORD

315 E. FIRST ST. SANFORD

Fresh Fish

At FOREST GATCHEL'S grocery—see page six

At FOREST GATCHEL'S grocery—see page six

At FOREST GATCHEL'S grocery—see page six

At FOREST GATCHEL'S grocery—see page six

Shrimp—Lobster Crab Meat—Scallops

At FOREST GATCHEL'S grocery—see page six

At FOREST GATCHEL'S grocery—see page six

At FOREST GATCHEL'S grocery—see page six

At FOREST GATCHEL'S grocery—see page six

AP FOOD STORES

Freshly Roasted Freshly Ground COFFEE
Mild & Mellow
8 O'clock 3 lb. bag 39c
Red Circle 2 lbs. 35c
Bokar 1 lb. 19c
VACUUM PACKED
Condor 1 lb. 23c

Jane Parker Light Flaky Plain or Sugared DOUGHNUTS
Box of 1 Dozen 12c

Sukana Red KIDNEY BEANS
1 Lb. Can 5c

NICH LEAN PICNIC HAMS lb. 12 1/2c

POTATOES 22c

Jane Parker DELICIOUS Chocolate Layer CAKE
1 Lb. 23c

FRESH PORK SHOULDERS 12 1/2c

APPLES 5 lbs. 17c

Ann Page Delicious Pure Fruit Preserves 16 Oz. Jar 17c

WESTERN ROAST OR BILDON STEAK 1 lb. 35c

CABBAGE 1 lb. 2c

Iona Tomato Juice 3 Lb., 2 Oz. Can 17c

NICH BEEF SHOULDERS ROAST 1 lb. 18c

CARROTS bch. 5c

PEKOE TEA 13c 25c

ANN PAGE Luscious PEACHES 25c

CAULIFLOWER 1 lb. 10c

ANN PAGE HONEY 9c 15c

ANN PAGE Prepared SPAGHETTI 6c

POTATOES 10c

ANN PAGE Molasses no. 1 1-2 can 19c

ANN PAGE Ginger Bread Mix 23c

POTATOES 15c

ANN PAGE DOG FOOD 3 16-oz. cans 25c

ANN PAGE BUTTER COOKIES 2 pkgs. 17c

PEACHES 12 1/2c

ANN PAGE WHEAT PUFFS 5c 9c

ANN PAGE FLOUR 12 lbs. 39c 24 lbs. 73c

PEACHES 12 1/2c

ANN PAGE TEA NAPKINS box of 80 5c

ANN PAGE DOG FOOD 3-16 oz. cans 25c

PEACHES 12 1/2c

PIGGY WIGGLY LOVETTS
201 E. First St. 219 Sanford Ave.

PIGGY WIGGLY LOVETTS
201 E. First St. 219 Sanford Ave.

PIGGY WIGGLY LOVETTS
201 E. First St. 219 Sanford Ave.

PIGGY WIGGLY LOVETTS
201 E. First St. 219 Sanford Ave.

SHRIMP 12 1/2c
Spam can 25c
Hams 15c

21st. ANNIVERSARY SALE!

SUGAR 5 lb. 19c

16 Page Food Section
Did You Get One?
If not ask for a copy at store—Biggest Food Ad ever published—Prices by the hundreds!

PICNIC HAMS
Mouth-Watering
MORRELL'S PRIDE
While They Last—Pound—14 1/2c

JEWEL 4 lb carton 35c
PICKLES 22-oz jar 12 1/2c
TOMATOES no 2 can 5c
PEANUT BUTTER 15c
TROPICAL quart 19c

1001 Features!
2 Pages of Meal Specials
100,000 Lbs. Picnic Hams
STOKELY 4-Star Sale

Bacon 29c
Bacon 23c
LARD 2 1 lb. cans 15c
WHITE BACON 7 1/2c
Cottage Cheese 12 1/2c
SHOULDERS 14c

PEACHES 12 1/2c

Velvo Coffee Pound 12 1/2c
3-lb. 35c
Flour 20-lb. 59c

Butter 33c
Oleo 10c
EGGS 17c

RICE 5 lbs 15c

25,000 Birthday Cakes
4 Famous Flavors
GREEN GIANT Brand Foods

POTATOES 10 lbs 21c
Celery 6 1/2c
Apples 5 lbs 25c
Carrots bch 4 1/2c
Cabbage 1 1/2c
Onions 3-lb 10c

IVORY SOAP 2 for 19c 2 for 11c

WILSON Toilet Tissues 3 for 14c

OXYDOL large 18 1/2c
3 reg. Size 25c
P & G SOAP 4 bar 15c

CAMAY SOAP 3 for 17c

Full Page of PRODUCE Specials

LIFEBUOY 3 for 17c

A & P FOOD STORES
Sanford, Florida
Owned and Operated by The Great Atlantic & Pacific Tea Co.

Engineers To Investigate "Death Valley"

(Continued from page one)

Division of the budget, but County Engineer E. P. Housholder pointed out that this placed the county in a position where the county board may obtain right-of-way deeds upon the survey to determine the route of this road. The board has not been in a session previously to "do anything" in connection with this project, it was pointed out.

Since its fiscal problems were complicated by the January session, the Road Department postponed the adoption of its 1940 budget at yesterday's meeting. At a Tallahassee meeting in January, the board approved a tentative budget calling for an increase of \$24,108,821 and estimated 1940 revenue at \$21,822,576, leaving a prospective deficit of \$2,122,045.

Since that time the commission's figures have been upset. Good weather damaged roads in North and Northwest Florida and State road engineers estimated it will cost \$2,500,000 to repair them. Loss of the fruit and vegetable crops, a large portion of which is hauled by truck, will reduce gasoline tax revenues from \$1,000,000 to \$1,000,000, the board said.

The board also is faced with requests for construction of projects at the various military establishments the Federal Government is building in Florida. These will cost, engineers said, \$1,500,000.

After listening to requests from delegations from virtually every section of the State for maintenance and construction of roads and bridges, the board adjourned until Mar. 18 when it will meet in Tallahassee to go over its 1940 budget.

Efforts to obtain Federal funds to help the State Road Department out of its \$5,300,000 emergency will be made by Governor Lane and State Road Chairman Arthur B. Hale.

The State legislative highway program committee, composed of State Senate and House members,

Republicans View Ohio Victory With Loud Jubilation

(Associated Press)

Republicans read the Ohio election returns with obvious jubilation yesterday and many predicted the defeat suffered there by Democratic candidates for the House was just a forerunner of what would happen to the Democrats on a national scale in November.

Senator Taft, Republican, Ohio, a candidate for the Republican presidential nomination, said the victory of Republican J. Harry McGargor in Ohio's seventeenth congressional district showed a "consolidation of the decisive trend toward Republican success in 1940." The district has been Democratic since 1930.

Representative Martin, of Massachusetts, the House Republican leader and John Hamilton, Republican national committeeman, echoed Taft's sentiment.

"The Republicans take the first blood of 1940," Hamilton commented. "This confirms the trend we have contended has been running since 1938."

met here today in conjunction with the State Road Department and addressed letters to Florida congressional delegation asking its aid in obtaining Federal aid. Copies of the communication were placed before the State Road Board by State Senator Joe Sharb of Port St. Joe and Representative John Burke of Pasco County.

"In view of the fact that Florida has no surplus funds with which to meet this emergency and in view of the further fact that our entire magnificent system of highways is in jeopardy unless repairs are made at once, an emergency is created which demands some prompt and forceful action," the letters said.

Florida Senators and Congressmen were urged to "use every means at your command to secure emergency Federal aid to the end that our highway system be maintained."



LITTLE MARY, miniature Indian elephant, arrived here early today with the live cargo of exotic animals and strange humans aboard the special railway cars of the Mammoth Exposition Train, which begins 2 days of showings aboard the tracks at First Street, today. The midget elephant is a part of the free menagerie, located on the lot outside the train. A score of unusual animals, including a living cow nearly nine feet from horn tips to the ground, and weighing 3,000 pounds. The main exhibition aboard the railway cars will remain open to the public from noon until 11:00 P. M. daily while here. Features also will be the world's largest living lizard, 19 1/2 hands tall, Custard Selim Jarjoura, the Shepherd from the Holy Land, a "headless" woman display, a flea circus, and various other attractions.

Red Armies Smash Close To Viipuri

(Continued from page one)

Computed from official communiques issued by the Finnish high command up to the evening of Feb. 25 the Russians have lost 655 planes since the start of the war and another large number of planes are believed to have been lost by dropping into the sea or behind the Russian lines. During the same period it was estimated that Russian tanks captured or destroyed total 1288.

LONDON, Feb. 25—Britain's new army, nearly a million men in France and at home, is arraying its forces in northern France to meet any German blow that might come along the route through Belgium followed by the Kaiser's legions in 1914.

British plans, closely coordinated with those of the French, are interpreted by military experts as intended among other things to guard against such a blow, which, wheeling south as a quarter century ago, would strike across the Flanders plain at Paris.

Neutral military men in Paris and London, sources close to the British general staff and Italian officers in Rome have expressed belief that Germany may seek a decision on the Flanders plain once more. Most of them assign late March or early April as the likely time for the Nazi Spring offensive should there be one.

Such a drive may be delayed, the observers agreed, but most of them are of the opinion that Germany, which they think could have some 300 divisions (about 1,500,000 men) under arms by Spring, is waiting only for better weather conditions to seek a decision in battle.

"The smoke screen of the Near Eastern adventure is just a little too opaque," said a neutral officer. "What's really been happening is a steady strengthening of British and French battle positions in France, especially in the last few weeks, when the weather permitted and allowed concrete fortifications to settle."

The general opinion here is that the British troops in the Near

Red Armies Smash Close To Viipuri

East (where Britain and France are reported to have nearly 600,000 men) are there for training and little else.

It is pointed out that it is now summer in Australia and New Zealand, where some of the Near Eastern contingents hail from, and it would be foolhardy to bring troops directly from that climate to fog-bound northern Europe.

The plan which many military men in London believe the Germans will follow was drawn up by the noted German strategist, General von Schlieffen, in 1906 and followed in modified form by Von Kluck in 1914.

Modern instruments of war may have compelled some modifications, but the body of the plan remains in all its grandiose proportions: a wheeling movement of 1,500,000 men through Belgium with its axis on the Ardennes forest and its outer flank enfolding Paris.

Yesterday's commentators expect the German battle line to be extended to permit tank and armored divisions full scope on Holland's flat spaces. Such divisions would be able to avoid and to flank some of Belgium's strongest defensive positions on which the British and French might try to stand if the Belgians called for aid.

Next Thursday, Friday, and Saturday—See page seven

IN THE CIRCUIT COURT OF THE 11th JUDICIAL CIRCUIT, IN AND FOR SEMINOLE COUNTY, FLORIDA.

STATE OF FLORIDA
EDNA IRINA LANGHECK,
PLAINTIFF
VS.
ERIC FREDERICK LANGHECK,
DEFENDANT

NOTICE OF PUBLICATION
 In the Name of The State of Florida, vs. ERIC FREDERICK LANGHECK.

It is ordered that you Eric Frederick Langheck appear to the Bill of Complaint filed herein on or before the 25th day in March, 1942, which is March 4, 1942. Otherwise a decree pro confesso will be entered against you.

It is also ordered that this notice be published once a week for four (4) consecutive weeks in the Sanford Herald, a newspaper published in Seminole County, Florida.

DONE AND ORDERED at Sanford, Seminole County, Florida, this 24th day of February, 1942.

C. S. HAND,
 Sheriff Seminole County, Florida.

Dr. W. D. Gardiner OSTEOPATH

FOR SALE
 48 Acres Four Miles South of Sanford on Sanford Ave., about 2,000 feet of paved frontage. Excellent for subdividing, here is a bargain for some one, write, F. J. McDowell, Careusa, Mich.

SAMPLE PRIMARY ELECTION

BALLOT

DEMOCRATIC PARTY

TUESDAY, MAY 7, 1940


SEMINOLE COUNTY

PRECINCT NUMBER _____

Make a Cross Mark (X) after the Name of the Candidate of your Choice

<p>FOR PRESIDENTIAL ELECTORS VOTE FOR SEVEN</p> <p>FOR UNITED STATES SENATOR VOTE FOR ONE</p> <p>FOR STATE DEMOCRATIC COMMITTEEMAN VOTE FOR ONE</p> <p>FOR GOVERNOR VOTE FOR ONE</p> <p>FOR SECRETARY OF STATE VOTE FOR ONE</p> <p>FOR ATTORNEY GENERAL VOTE FOR ONE</p> <p>FOR COMPTROLLER VOTE FOR ONE</p> <p>FOR STATE TREASURER VOTE FOR ONE</p> <p>FOR STATE SUPERINTENDENT OF PUBLIC INSTRUCTION VOTE FOR ONE</p> <p>FOR COMMISSIONER OF AGRICULTURE VOTE FOR ONE</p> <p>FOR JUSTICES OF THE SUPREME COURT VOTE FOR ONE</p> <p>FOR RAILROAD COMMISSIONER VOTE FOR ONE</p> <p>FOR STATE SENATOR 11TH SENATORIAL DISTRICT VOTE FOR ONE</p> <p>FOR MEMBER OF THE HOUSE OF REPRESENTATIVES Group No. 1 VOTE FOR ONE</p> <p>FOR MEMBER OF THE HOUSE OF REPRESENTATIVES Group No. 2 VOTE FOR ONE</p> <p>FOR CLERK OF THE CIRCUIT COURT VOTE FOR ONE</p> <p>FOR TAX COLLECTOR VOTE FOR ONE</p> <p>FOR COUNTY COMMISSIONER OF TOWN VOTE FOR ONE</p>	<p>FOR COUNTY PROSECUTING ATTORNEY VOTE FOR ONE</p> <p>W. Herbert Messer</p> <p>Edward J. Nelson</p> <p>George A. Speer, Jr.</p> <p>FOR SHERIFF VOTE FOR ONE</p> <p>B. C. Dodd</p> <p>Geo. W. Gray</p> <p>C. M. Hand</p> <p>J. F. McClelland</p> <p>FOR COUNTY SUPERINTENDENT OF PUBLIC INSTRUCTION VOTE FOR ONE</p> <p>T. W. Lawton</p> <p>FOR SUPERVISOR OF REGISTRATION VOTE FOR ONE</p> <p>FOR COUNTY COMMISSIONER DISTRICT No. 1 VOTE FOR ONE</p> <p>O. J. Pope</p> <p>D. L. Thrasher</p> <p>FOR COUNTY COMMISSIONER DISTRICT No. 2 VOTE FOR ONE</p> <p>F. A. Dyson</p> <p>FOR COUNTY COMMISSIONER DISTRICT No. 3 VOTE FOR ONE</p> <p>W. B. Ballard</p> <p>B. J. Overstreet, Sr.</p> <p>FOR COUNTY COMMISSIONER DISTRICT No. 4 VOTE FOR ONE</p> <p>J. E. Partin</p> <p>FOR COUNTY COMMISSIONER DISTRICT No. 5 VOTE FOR ONE</p> <p>W. G. Kilbee</p> <p>S. F. "Sammy" Long</p> <p>FOR MEMBER OF BOARD OF PUBLIC INSTRUCTION DISTRICT No. 1 VOTE FOR ONE</p> <p>E. T. Haines</p> <p>FOR MEMBER OF BOARD OF PUBLIC INSTRUCTION DISTRICT No. 2 VOTE FOR ONE</p> <p>L. E. Jones</p> <p>FOR MEMBER OF BOARD OF PUBLIC INSTRUCTION DISTRICT No. 3 VOTE FOR ONE</p> <p>E. C. Jones</p>
---	---

SALE



SPRING TOPPER COATS

In All Wools
 Flannels
 Tweeds

\$5.95
 to
\$22.50

Sizes 12 To 40

Miss Plaza
 AND
 Martha Manning

DRESSES

Crepes
 Chantangs
 Dupont Crepes

IN
 BEIGE
 WHITE
 GREEN
 NAVY
 SLIPPER WINE

NOTICE TO CREDITORS
 Probate Law 1932.
 STATE OF FLORIDA,
 COUNTY OF SEMINOLE:
 You and each of you are hereby notified and required to present any claims and demands which you, or either of you, may have against the estate of **WILDA B. MOTT**, deceased, late of said county, to the County Judge of Seminole County, Florida, at his office in the court house at Sanford, Florida, within eight calendar months from the date of the first publication of this notice. Each claim or demand must be in writing, and must state the place of residence of the claimant, and must be sworn to by the claimant, agent or attorney, or the same will become void according to law. This the 25th day of February 1942 being the time of first publication.

P. D. ANDERSON
 Executor of the Estate of **WILDA B. MOTT**, deceased.

MAMMOTH INTERNATIONAL EXPOSITION TRAIN

Sanford—Today
 Thu.-Fri. Feb. 26, Mar. 1
 On A. C. L. Tracks
 At First St.



ONE 3-PIECE CANE BACK LIVING ROOM SUITE
 Here's a chance to test your talent in recovering furniture—this suite just needs covering. Good frame, good springs—something to work on.

\$7.50

ONE 3-PIECE CANE BACK LIVING ROOM SUITE
 Just Like New **\$39.50**
 Worth \$59.00

60 INCH Sofa Bed \$6.95

WASH STANDS 75c

Dressers \$4.00 up

4 PIECE Bedroom Suite \$29.50

THESE AND MANY MORE—
 COME LOOK AT THEM

LAST DAY BARGAINS

on ASIS FURNITURE

FRIDAY & SATURDAY ONLY

ONE 3-PIECE CANE BACK LIVING ROOM SUITE

Here's a chance to test your talent in recovering furniture—this suite just needs covering. Good frame, good springs—something to work on.

\$7.50

ONE 3-PIECE CANE BACK LIVING ROOM SUITE

Just Like New **\$39.50**
 Worth \$59.00

60 INCH Sofa Bed **\$6.95**

WASH STANDS **75c**

Dressers **\$4.00 up**

4 PIECE Bedroom Suite **\$29.50**

THESE AND MANY MORE—
 COME LOOK AT THEM

FOR PRESIDENTIAL ELECTORS
 VOTE FOR SEVEN

FOR UNITED STATES SENATOR
 VOTE FOR ONE

FOR STATE DEMOCRATIC COMMITTEEMAN
 VOTE FOR ONE

FOR GOVERNOR
 VOTE FOR ONE

FOR SECRETARY OF STATE
 VOTE FOR ONE

FOR ATTORNEY GENERAL
 VOTE FOR ONE

FOR COMPTROLLER
 VOTE FOR ONE

FOR STATE TREASURER
 VOTE FOR ONE

FOR STATE SUPERINTENDENT OF PUBLIC INSTRUCTION
 VOTE FOR ONE

FOR COMMISSIONER OF AGRICULTURE
 VOTE FOR ONE

FOR JUSTICES OF THE SUPREME COURT
 VOTE FOR ONE

FOR RAILROAD COMMISSIONER
 VOTE FOR ONE

FOR STATE SENATOR 11TH SENATORIAL DISTRICT
 VOTE FOR ONE

Ralph B. Chapman
E. F. Housholder

FOR MEMBER OF THE HOUSE OF REPRESENTATIVES
 Group No. 1
 VOTE FOR ONE

J. R. Lyles

FOR MEMBER OF THE HOUSE OF REPRESENTATIVES
 Group No. 2
 VOTE FOR ONE

George H. Bridge, Jr.

FOR CLERK OF THE CIRCUIT COURT
 VOTE FOR ONE

O. P. Harndon

FOR TAX COLLECTOR
 VOTE FOR ONE

John E. Callaway
Jan. D. Jackson

FOR COUNTY COMMISSIONER OF TOWN
 VOTE FOR ONE

Fast Card Scheduled Tonight At Longwood Kennel Club Track

ORLANDO, Feb. 29 — Four of the second flight feature-race hounds will compete with four newcomers to the highlight race tonight in the ninth race at the Sanford-Orlando Kennel Club.

Greyhound Results

Table of greyhound race results including race numbers, names of dogs, and their respective times and positions.

Bicycle Club Will Be Formed For Boys

A bicycle club for boys is being formed by director of recreation E. M. Hardaker and all boys of any age who are interested and who have bicycles are eligible.

Classified Advertisements

Various classified advertisements including business services, maid preferences, job openings, and real estate listings.

CHALKING 'EM UP

CHARLIE CHALKER "There's One Born Every Minute" This business of having Jack Dempsey travel over the country refereeing wrestling bouts will be all right for those who want to see Jack bad enough to pay the ante to see the former world's champion walk around the ring while two punks pretend to chew each other's ears off.

We hear some of the boys at the Sanford High want a baseball team this Spring. The local club might do well to encourage them. Future talent might be developed there.

GREYHOUND ENTRIES

Table listing greyhound entries for various races, including names of dogs and their owners.

Touchton Drug Company Moves To Tie For Third In Bowling League

Touchton's Drug Company's bowling team defeated Campbell's Security Feed Co. three straight this week to move up to a tie for third place in the current tournament.

The Yanks continue to lead the A League by defeating the Tigers two out of three and the Pirates defeated the Cubs two out of three.

Sports Editor To Be One Of Judges In Azalea Pageant

PALATKA, Feb. 29 — Bruce Dudley, former Sports Editor of the Louisville, Ky., Courier-Journal who recently was awarded the Sporting News trophy for being the outstanding Minor League executive during the 1939 season, accepted an invitation to be one of the judges at the Azalea Festival Beauty Pageant to be staged in the Ravine Gardens here, Mar. 10.

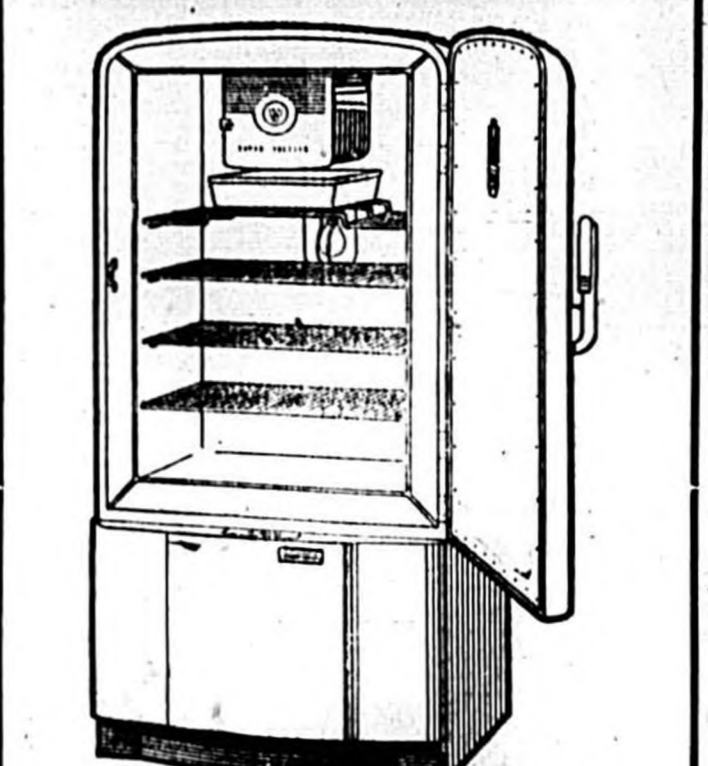
Horse Show To Be Opened At Orlando Today

ORLANDO, Feb. 29 — Tonight marks the opening of the 4th Orlando Horse Show. The greatest collection of fine horses ever to be gathered together in Central Florida is now stable at the Orange Blossom Stables on Tampa Avenue.

Horse Show To Be Opened At Orlando Today

ORLANDO, Feb. 29 — Tonight marks the opening of the 4th Orlando Horse Show. The greatest collection of fine horses ever to be gathered together in Central Florida is now stable at the Orange Blossom Stables on Tampa Avenue.

ANNOUNCING...



A Big 6-Foot WESTINGHOUSE FOR ONLY \$119.95 16c PER DAY BAUER RADIO and ELECTRIC SERVICE 115 Magnolia Avenue Telephone 29



DAN DUNN - SECRET OPERATIVE 48



ALLEY OOP



By FRED HARMAN



By RAY THOMPSON And CHARLES COLL



Spring Styles Are Entirely In Feminine Taste

Designed To Reveal Curves And Are Alive With Color

By ADELAIDE KERR
NEW YORK, Feb. 29.—(A)—The new spring clothes that are going to make America's Easter Parade are truly feminine fashions.

They have the characteristics that belong to women. They are soft in design instead of strictly tailored (even suits have been softened). They are cut to show curves, are alive with color, show a softness for flowers, a jeweled touch, they put a little piquancy into something like a big begetem heart on a lapel and even make a flash of temper in a touch of scarlet on a belt. Altogether, they're good.

Biggest news in their cuts lies in the fact that they have loosened up the winter's wrap waist. Most talked of silhouette is the long torso, that curves the waistline smoothly without cinching it, and moulds the figure to the hips, where the skirt joins, to give a long-waisted look. Still easier fitting are some new chemise frocks whose bodices blouse out loosely over belt tops and whose skirts fall in pleats.

Otherwise the description of the silhouette has a familiar sound. Skirts are still short and full. (Paris has even shortened some, bringing their hemlines to midknee.) Waistlines are neat and still small; necklines often fairly high; shoulders still widened and slightly padded, though dresses show less exaggeration in this respect than last year. Sleeves are generally fairly simple.

A lot of navy blue and black appears in the clothes which will be seen in smart churches Easter morning. Some light navy blue, soft grayed and blue gray, beige and sand tones are next in importance. By way of contrast there are some dark and chestnut browns.

Twills, reps, and tweeds make some of the smartest wool coats and suits. Stripes, plaids and checks are all in evidence. Frocks are designed of plain and printed crepes, rayon and wool jerseys.

Suits promise to be the favorite Easter costume again this year. But the 1940 version shows infinite variety. Among

How To Relieve Bronchitis

Bronchitis, acute or chronic, is an inflammatory condition of the mucous membrane lining the bronchial tubes. Circulation goes right to the lungs, phlegm is secreted and said nature to soothe and heal raw, tender, inflamed bronchial mucous membranes. All you need to do is take a bottle of Creomulsion with the understanding that you are to like the way it quickly always the cough or you are to have your money back.

Creomulsion for Coughs, Chest Colds, Bronchitis



Bowling
10c a Line 11 A. M. to 9 P. M.
(Except Sundays and Holidays)
15c a Line At Night

Spectators Welcome Free
Sportland Alleys
HARRY ROBSON, Prop.
Telephone 824-J
East First St.

Your Cold Cough Is Tough On Your Friends, Too!

You can't blame your friends for catching you would go somewhere else with your cold and cough, could you? Highly contagious and some need you of time from illness than all other diseases combined. Get Menth-A-Mulsion. Menth-A-Mulsion is guaranteed to stop your cold or cough immediately and rid your system of the germ that will be responsible for your next cold. Menth-A-Mulsion is guaranteed to stop your cold or cough immediately and rid your system of the germ that will be responsible for your next cold. Menth-A-Mulsion is guaranteed to stop your cold or cough immediately and rid your system of the germ that will be responsible for your next cold.



One of the few women guides in the country, Alice Reynolds of Pittsburg, N. H., is also an expert at log rolling. She demonstrated ability to stay afloat on twirling twig at Cleveland's sportsmen's show.

the neck are costume suits composed of a soft frock and fitted jacket of light-weight gray, beige or cadet blue wool. New tailcoats—less severely cut than they have been in the past—are designed of plain, checked or short-plaid wools—with either short fitted or long torso jackets, often accented with pockets.

Often seen this year is a jacket that contrasts with the skirt. For instance, a plain wool jacket tops a check skirt or dark brown jacket a gray skirt. A lot of dark silk suits—of faille, bengaline and cravat silk—are going to be seen around town, too, when Easter church bells ring. Most of them will be paired with frothy white blouses, while the wools will be worn with checked taffeta or white pique blouses.

Favorite coat is a fitted princess one with small neat lapels and gently flared skirt, designed of navy blue twill, or (less often) of gray or sand wool. Straightline loose coats are in the early Easter parade picture too. In design, the fitted coats reflect the trend toward softness in such details as a quilted diamond pattern near the collarbones. Gileson shoulder pleats or jeweled flower buttons.

Under them go some very smart frocks. Among them are gay prints splashed in neat all-over patterns—flay flowers, Javanese dancers, Finland's arms and the like. (Occasionally the prints match the coat's lining to make an ensemble.) There are also some suave jersey dresses designed with long torsos, and full skirts gathered at the hip-line. Last, but not least, come a lot of dark crepe and jersey frocks accented with a touch of crisp white pique or lace-trimmed batiste.

There is a complete new array of hats, bags, gloves, costume jewelry and lapel ornaments to give them color and a final festive touch.

Re-elect U. S. Senator
CHARLES G. ANDREWS
[Image of Charles G. Andrews]

How To Reduce Income Taxes Is Shown By Writer

Deductions May Be Made On Items Such As State Tax On Gas

By PAUL ROSS
WASHINGTON, Feb. 29.—(A)—Past! Want to save money on your income tax?

You'd be surprised what a few hours of joggling your memory and brushing up on arithmetic will do for you. And legitimately, too. This all comes, every bit of it, from a source close to the United States government.

Remember the time you bought a pair of tickets for that boxing match? And the time you surprised the wife and instead of taking her down to the corner movie where the admission is only 25 cents, you brought orchestra seats for that Shakespeare play? If you'll just figure out all the admissions of more than 40 cents you paid, you can deduct 10 percent of them from your income.

Uncle Sam gives us suckers an even break on donations, too. If you shelled out for charitable, religious and educational institutions last year, Uncle Sam won't laugh in your face if you deduct as much as 15 percent of your net income. The only thing is you have to have proof you gave all this money and if the tax collector should ask for it, and the object of your kindness has to be organized under state law.

You needn't pay a tax on taxes—some kinds of taxes, at least. For instance, you can deduct the tax on club dues, safe deposit boxes, telephone calls, cablegrams. And you can deduct your state income tax, if any, and sales taxes. And if you are an employer, you can deduct the social security taxes you pay on your employees—but if you're an employee, nothing doing.

Here's another bit: If you smoke a lot and drink a lot, you've paid a lot of federal excise taxes on tobacco and alcoholic beverages—which doesn't make any difference at all in the amount of income tax you owe. To get back the social security taxes you pay on your employees—but if you're an employer, nothing doing.

If you pay cagey, there are a lot of other things you can deduct. Stuff like this—rental of things, you can deduct whatever you paid for a dog license . . . and for driver's license . . . and auto plates . . . and for taxes on gasoline.

If you pay cagey, there are a lot of other things you can deduct. Stuff like this—rental of things, you can deduct whatever you paid for a dog license . . . and for driver's license . . . and auto plates . . . and for taxes on gasoline.

Under them go some very smart frocks. Among them are gay prints splashed in neat all-over patterns—flay flowers, Javanese dancers, Finland's arms and the like. (Occasionally the prints match the coat's lining to make an ensemble.)

Of course, the drawback is this—that it's all a matter of percentage. When you make a \$10 deduction, for example, it doesn't mean that you pay \$10 less in taxes. Oh, no! It merely means that you have reduced by \$10 the amount of taxable net income. A 4 percent, your \$10 deduction will enable you to pay just 40 cents less to Uncle Sam.

I JUST BROUGHT THIS LITTLE SKATING NUMBER DOWN TO SHOW YOU HOW BEAUTIFUL GRIFFIN ALL KINDS OF WHITE SHOES
[Image of a skater]

If this were you—we hope you're insured

O. D. Farrell
Accident, Life and Annuity Income for Life policies.
[Image of O. D. Farrell]

Sugar Producers Air Problems At Annual Banquet

CLEWISTON, Feb. 29.—(A)—state and national dignitaries, as well as officials and stockholders of the United States Sugar Corporation, gathered in the Clewiston Inn here last week for the Annual Stockholders Dinner, which was one of the best attended and most interesting of any yet held.

President Clarence Biting was the principal speaker, and he pulled no punches in presenting to guests and stockholders the problems of his company in its effort to expand in the face of government quota restrictions and natural hazards.

Exploding the claims of reciprocal trade defenders that our trade with Cuba while perhaps a handicap on American sugar producers was at the same time beneficial to our manufacturers and farmers as it permitted Cubans to buy more American goods, Biting pointed out that Cuba's imports in 1937—three years after being granted exclusive rights to almost 1-3 of our sugar market—showed that only 70 tons, or about 2,500 bushels of corn was imported compared with many thousands of tons that amount prior to Cuban legislation which excluded American products from Cuban markets.

Other items given as illustrations for that same year were: 95 tons of lard compared with 30 times that much prior to the act. The most striking comparison was in the egg imports where there was a drop from over 11,000,000 before the act to only 139 dozen in 1937.

Answering the claim that curtailing the American sugar producer and favoring Cuba enabled Cuban labor to purchase more American made goods, Biting pointed out that while the government will not even permit Florida to produce enough sugar to meet her own needs, it is nevertheless a fact that there are 60 times as many automobiles in Florida as there are in Cuba, and 10 times as many radios, and contended that if but a small part of the sugar money now going to Cuba could go to Florida in the form of an increase in our quota, the American farmer and laborer affected by the sugar industry would spend many times more on their own American manufactures because our wage scale is much higher and the American standard of living much higher.

Seminole County Court Records
Special Warranty Deed Long, S. F. et ux to C. S. Lee. Quit-Claim Deeds Miller, George B. unmarried to Chas. A. Benson et ux. Hunter, Mrs. C. P. executrix to Mrs. Heath Merrill Rushin & Arthur J. Merrill. Satisfaction of Mortgage The American Agril. Chemical Co. to V. H. Sley et ux. Partial Release of Mortgage Chulnuta Company to S. F. Long et ux. Power of Attorney Selby, F. W. to C. J. Selby. State Board of Examiners to Dr. Peter A. Polkey. Sanitation Commission State of Florida to A. E. Cline. Foreign Judgment Hill Hardware Co. Inc. vs. John G. Herbst. License State Board of Health to Lavonia Hayes. Suits-Civil Taylor, J. L. Co. Inc. vs. E. H. Lane, doing business as Lane Dry Cleaning Co. Lease Cates, J. J. Co. Inc. to Willie Mae Cates. RHEUMATIC PAIN A DANGER SIGNAL It may be nature saying "Something Wrong. Act quickly. Make today's test. Make today's active same as bowels. Exercise regularly. Rheumatism can lead to rheumatic pain, backache, headache, Stiff joints, burning, frequent or scanty flow. Use kidney evacuant, the DIURETIC from any drugstore. Four for back not pleasant. Locally at Touchette's Sanford Drug Co.



This diorama recently completed in the studios of the Florida State Exhibit for the World's Fair of 1940 shows the campus of the University at Gainesville, Miss Betty Stover of the Sky and watches scenes of life at the University fitted in the deland veranda projection.

SANFORD MARKET REPORT

Thursday, February 29, 1940. Daily report of prices of Florida fruits & vegetables at the Sanford State Farmers' Market to truckers, carlot assemblers and other dealers for a 24 hour period ending at 5:30 P. M. today as reported by H. J. Lehman, manager, to the Florida State Market News Service. GRAPEFRUIT—Supplies light, demand good. Comb boxes 1.50, 1/2 box 75c; 2 1/2 boxes 1.75, 1/2 box 85c. CHANGES—Supplies light, demand good. Comb boxes 1.75, 1/2 box 85c; 2 1/2 boxes 1.95, 1/2 box 95c. AVOCADOS—No supplies. BANANAS—Imported, supplies mod. demand fair. Per 100 lbs. 2.15. BEANS (LIMA)—No supplies. BEANS (SNAP)—No supplies. BEETS—Supplies mod. demand fair. Doz. bun. 45-55c. BROSOLI—Supplies mod. demand light. Per 100 lbs. 5-7c. CABBAGE—Supplies mod. demand fair. Per 100 lbs. 12-14c. RED BU. BSK. 1.75. CABBAGE PLANTS—Per 1,000 60-75c. CHINESE CABBAGE—Crates 20-25. CARROTS—Supplies mod. demand fair. Doz. bun. 20-25c. CAULIFLOWER—1 1/2 bu. hpr. 1.50-2.00. CELERY—Supplies mod. demand fair. crates 1.90-2.40. CUCUMBERS—Per doz. crates 2.50. COLD-START—Supplies mod. demand good. Doz. bun. 40-50c. CUSTARD—No supplies.

ANDREW CARRAWAY AGENCY
"INSURANCE PLUS SERVICE"
FIRE CASUALTY
TELEPHONE 180
108 1/2 PARK AV. SANFORD, FLORIDA

Consult Your Realtor AS YOU WOULD YOUR DOCTOR
He, too, is a professional man, governed by a long established code of ethics. You can always rest assured of fair treatment when you consult a Realtor.
The Following Are Members Of THE SEMINOLE COUNTY REAL ESTATE BOARD REALTORS
Bayard Realty Co., Walter L. Cooper
Colclough Realty Agency, Col. H. C. DuBose
A. P. Connelly & Sons, Inc., Edward Higgins
SALESMEN
R. M. Ball
H. James Gut

"HERE'S" TIMELY NEWS FOR SANFORD MOTORISTS!

SEE HOW DODGE ENGINEERING SAVES MONEY ON GAS, OIL, UPKEEP!
If you want to know what car gives you most for your money, here's a pretty good clue—4,061 engineers bought Dodge cars in the last 12 months!
Think of it! Men whose life work is engineering—agree that Dodge engineering is matchless in the industry. Even though it costs you nothing extra, it means brilliant performance, longer car life, fewer repair bills and big savings on gas and oil.
Come in and let us demonstrate this great new 1940 Dodge Luxury Liner to you.
10c. 1939, through Sat., 2:30. Ladies' Agents excluded.

DODGE ENGINEERING COSTS YOU NOTHING EXTRA! REEL & SONS
301 W. FIRST STREET, TELEPHONE 160
DODGE ENGINEERING COSTS YOU NOTHING EXTRA! REEL & SONS
301 W. FIRST STREET, TELEPHONE 160

ADVERTISING
A hen is not supposed to have much common sense or tact, yet every time she lays an egg she cackles forth the fact.
A rooster hasn't got a lot of common sense to show, but none-the-less most roosters have enough sense to crow.
The mule, the most despised of beasts, has a persistent way of letting folks know he's around by his incessant bray.
The busy little bees they buzz; bulls bellow and cows moo; the watch dog barks; cinders quack; doves and pigeons coo.
The peacock spreads his tail and squawks; pigs squeal and robins sing, and even snakes have got the sense to hiss before they sting.
But man, the greatest masterpiece that nature could devise, will often stop and hesitate before he'll advertise.—California Editor.

Did You Know?

DeSoto Landed 13 Pigs In Florida in 1639—
P-O-R-K
Hams 12 1/2c
Chops 12 1/2c
Cabbage 12 1/2c
Brains lb. 10c
Sausage lb. 10c
Shoulder
Sides 3 lbs. 25c
LIVER 3 lbs. 25c

B-E-E-F
STEAKS lb. 19c
CHUCK ROAST lb. 17c
ROAST WITH VEGETABLES lb. 15c
BRISKET HIR STEW 2 lbs. 25c
RED SMOKED SAUSAGE lb. 10c

BACON lb. 7 1/2c
LARD 3 lbs. 25c
SHOULDER ROAST OF LAMB lb. 13 1/2c
SHOULDER ROAST OF VEAL lb. 15c
COUNTRY ROLL BUTTER lb. 33c

MILK All Brands Tall Can 6c
Campbell's All 10c Sellers 3 for 25c
SOUP Blue 4 lbs. 15c
Rose 4 lbs. 20c
RICE 5 Lbs. 20c
Sunshine Mellow Blend lb. 12 1/2c
SUGAR 4 Lbs. 8c
COFFEE Fresh Fla. 30c
Gr. A Large doz. 39c
MEAL Salad Dressing qt. 32c
EGGS 3 Giant Bars 10c
DOG FOOD 5 Lbs. 19c
MIR' WHIP Rutabagas 2 1/2c
P & G SOAP Cabbage 1 lb. 1 1/2c
APPLES Onions 3 Lbs. 10c
Lettuce 3 for 10c

Sanford is The Only Central Florida City Affording Rail, Highway and Water Transportation

The Sanford Herald

AN INDEPENDENT NEWSPAPER

Seminole County Produces More Fruit And Vegetables Than Any Similar Area In America

VOLUME XXXI

Member Associated Press

SANFORD, FLORIDA, FRIDAY, MARCH 1, 1940

Established In 1908

NUMBER 162

Red Armies Attack Fiercely As Finns Evacuate Viipuri

Summer Welles Is In Berlin For First Of Conferences With Belligerent States

German Warplanes Attack Trawlers

President Expects To Sign Bill To Loan Finns \$20,000,000

The Red army closed in on strategic Viipuri today, drawing toward a climax in the month-old offensive pressed without a pause despite severe losses.

In the other European conflict, a burst of aerial activity coincided with the arrival in Berlin of United States Under Secretary of State Sumner Welles for his first conference in a belligerent capital of his fact-finding European tour.

German warplanes roared off Britain's east coast to attack trawlers and other shipping, and a Berlin announcement said several large ships were sunk and that a convoy was dispersed.

British aerial assaults meanwhile were announced in London to have reached Berlin during the night in reconnaissance flights which also cleared important German airports and naval bases.

Warlike propaganda in France brought a revelation of the nation's gold reserves, and the availability of a "widespread and accurate" census of the nation's army was announced to be finished by April 1 prior to the signing of a peace treaty.

Russian army was increased to 1,600,000 soldiers were called to the colors. The Netherlands, another neutral, barred traffic in "gift packages."

As President Roosevelt neared the end of his southern cruise he informed Washington he expected to sign tomorrow the bill under which \$20,000,000 would be made available to Finland for anti-military purposes.

A Red army commander raid forces in the Viipuri sector had reached a joint only a little more than a mile south of the sea port while to the east another spearhead was five miles away.

Britain was preparing to tighten the stranglehold of her warlike blockade even further by stopping the export of coal from the Italian following the Italian seizure of British-Italian trade talks.

HELINKI, Mar. 1.—(AP)—

Finland's evacuation of Viipuri is but a matter of time.

Only a few kilometers (about four miles according to the Russian communiqué) separate the army from the evacuated city.

Last night they could see the glow of a number of buildings still burning in Viipuri, a ghost city of bomb craters and shellfire.

The fact that this dispatch passed the Finnish censorship indicated the Finns already had resigned themselves to the loss of Viipuri.

Small, peaceful, peaceful people who received in New York said the Finnish community was so right that foreign correspondents in Finland have been unable to get out a single line the last two or three days on the actual situation and the progress of the fighting.

Despite the imminence of Russian occupation of Finland's second largest city, some 6,000 Finns are evacuating themselves to the interior of the country.

Small, peaceful, peaceful people who received in New York said the Finnish community was so right that foreign correspondents in Finland have been unable to get out a single line the last two or three days on the actual situation and the progress of the fighting.

Small, peaceful, peaceful people who received in New York said the Finnish community was so right that foreign correspondents in Finland have been unable to get out a single line the last two or three days on the actual situation and the progress of the fighting.

Missing Actress



Reputed missing in Florida, actress (above), young film actress, last heard from by family and friends when she telephoned from New York that she was leaving for Hollywood and would arrive last Monday, February 16.

Reputed missing in Florida, actress (above), young film actress, last heard from by family and friends when she telephoned from New York that she was leaving for Hollywood and would arrive last Monday, February 16.

Reputed missing in Florida, actress (above), young film actress, last heard from by family and friends when she telephoned from New York that she was leaving for Hollywood and would arrive last Monday, February 16.

Reputed missing in Florida, actress (above), young film actress, last heard from by family and friends when she telephoned from New York that she was leaving for Hollywood and would arrive last Monday, February 16.

Reputed missing in Florida, actress (above), young film actress, last heard from by family and friends when she telephoned from New York that she was leaving for Hollywood and would arrive last Monday, February 16.

Reputed missing in Florida, actress (above), young film actress, last heard from by family and friends when she telephoned from New York that she was leaving for Hollywood and would arrive last Monday, February 16.

Reputed missing in Florida, actress (above), young film actress, last heard from by family and friends when she telephoned from New York that she was leaving for Hollywood and would arrive last Monday, February 16.

Reputed missing in Florida, actress (above), young film actress, last heard from by family and friends when she telephoned from New York that she was leaving for Hollywood and would arrive last Monday, February 16.

Reputed missing in Florida, actress (above), young film actress, last heard from by family and friends when she telephoned from New York that she was leaving for Hollywood and would arrive last Monday, February 16.

Reputed missing in Florida, actress (above), young film actress, last heard from by family and friends when she telephoned from New York that she was leaving for Hollywood and would arrive last Monday, February 16.

Reputed missing in Florida, actress (above), young film actress, last heard from by family and friends when she telephoned from New York that she was leaving for Hollywood and would arrive last Monday, February 16.

Reputed missing in Florida, actress (above), young film actress, last heard from by family and friends when she telephoned from New York that she was leaving for Hollywood and would arrive last Monday, February 16.

Reputed missing in Florida, actress (above), young film actress, last heard from by family and friends when she telephoned from New York that she was leaving for Hollywood and would arrive last Monday, February 16.

Reputed missing in Florida, actress (above), young film actress, last heard from by family and friends when she telephoned from New York that she was leaving for Hollywood and would arrive last Monday, February 16.

Reputed missing in Florida, actress (above), young film actress, last heard from by family and friends when she telephoned from New York that she was leaving for Hollywood and would arrive last Monday, February 16.

Classes On Sales Practices Will Begin On Mar. 6

Mrs. Beymer To Be Instructor For Salesmanship Sessions

The first of a series of 10 weekly classes in "Sales Practices and Problems of Retail Clerks" will be held in the Chamber of Commerce building on Wednesday at 8:00 P. M. according to an announcement today by Chamber of Commerce officials and members of the Business and Professional Men's Association, under whose auspices the classes are being held.

These classes were previously scheduled but were postponed because of the illness of the teacher who had been selected to come here.

The announcement that a new schedule of classes has been arranged followed a visit here earlier in the week of Miss Evelyn Beal, district co-ordinator of the State Extension Service, who will assist in organizing the first class on Wednesday evening.

Mrs. Juanita D. Beymer, now in Orlando, will be the instructor for the classes.

Considerable interest in such a school has been manifested by the local merchants who have indicated that the full complement of their clerks will be urged to attend each of the 10 classes.

The classes are made possible through the State Department of Trade and Industrial Education and is financed through State and Federal funds under the plan program through which the local vocational school is operated. There will be no charges or fees whatsoever for the students attending the classes.

Plans for the classes, which will be open to all in Sanford and Seminole County who are interested. It is not necessary to fill out an enrollment card in advance since the class will be presenting to the principal of the school on the first session on Wednesday night.

The instructor, Mrs. Beymer, has had considerable experience in this field. She supervised a store service in 1924 at Dora and Hull in Pittsburg, Pa., and conducted research work in this field at Joseph and Horne in Pittsburgh in the following year. She taught all selling and non-selling employees in Gimble who of Pittsburgh, from 1926 to 1934 and had the responsibility of selecting all employees.

During this time she made many analyses, conducted many surveys and other researches in the field of retailing. She has also done research work for the National Dry Goods Association.

Full information on the classes may be obtained at the Chamber of Commerce.

Floridians Ask Reimbursement In Medfly Losses

WASHINGTON, Mar. 1.—(AP)—A Florida delegation contended before a Senate committee Thursday that citrus growers of the State were entitled to reimbursement for damage they sustained in 1939-40 during the Agriculture Department's Mediterranean fruit fly eradication campaign.

Supported by the State's congressional delegation, witnesses told the committee headed by Senator Schwartz that Florida served as the "battleground for the pest" in the fight against the pest and growers should be compensated for their losses.

The committee was considering a bill by Senators Andrews and Pepper of Florida, authorizing the Comptroller General to determine the amount of indemnity due each grower and growers a formula for payment.

Claims of the approximately 7,000 growers involved were estimated to total \$7,000,000. The cost of the eradication campaign was \$1,000,000.

A. E. Frazee of Orlando, chairman of a State Reimbursement Commission, set up shortly after the eradication campaign, said growers were had to destroy their trees and groves, and they would receive compensation for damage.

"The fruit fly was a menace to the citrus industry," he declared. "Florida was the battleground for the pest and the growers of that State should not shoulder the loss."

One Drowns As Torrent Breaks Dike

Death Toll From California Floods Is Raised To Six As Many Flee Homes

SAN FRANCISCO, Mar. 1.—(AP)—A torrent from a broken dike drowned another person at Meridian today, bringing to six the toll of death from northern California's five-day flood.

Four deaths occurred earlier in the week; two persons were missing, and more than 5,000 have been forced from their inundated homes.

In the Pacific northwest, winds and floods struck, causing two deaths in Oregon, and one in Washington.

The levee at Meridian, 60 miles north of Sacramento, gave way shortly after midnight, and residents fled to higher ground.

Breaking of the dike, causing their deaths, was believed to have caused the city of Colusa from grave peril. The breach eased pressure of back water at Colusa, about eight miles to the north, after the Sacramento river had crested at 29 feet higher than the record flood of 1907.

Arrow Shot By Youth Misses Cabinet Member

LONDON, Mar. 1.—(AP)—A steel-tipped arrow sent winging through a window of Prime Minister Chamberlain's No. 10 Downing street residence in the course of "local credit" by a man of the twentieth century Robin Hood yesterday just missed one of the cabinet members.

The arrow landed the green-jacketed young man, Joseph Green, 22, in name, in court, where he said:

"A policeman told me the arrow just missed a cabinet minister standing in the ante-room."

Green said he did not know which minister, and no other source would comment.

However, because Green was to join the army last night, he cut off his right arm and was simply placed under a £2 (\$4) peace bond for a year.

The arrow which went zooming into the window of the local politician's home was made of steel half-inch long. Attached to the shaft was a note four lines long saying:

"As Hitlerism. The war demands a debt-free Britain. Social credit is the only remedy. Social credit is coming."

Green, who calmly told reporters he could put an arrow through a window, was 50 years, used a yew bow of the legendary Robin Hood type. He said he shot through the window to avoid hitting the policeman standing in the door. He had intended to drive an arrow with his message attached into the prime minister's door in the beat Robin Hood style.

Later Green said, in anticipation of joining the army:

"I regret having to play Robin Hood in Downing street, but I think people here should fight Hitlerism at home as well as in France. I expect to get plenty of shooting with the army, and I am 100 percent patriotic. Britain will not emerge victorious without establishing a debt-free money system here."

Speaking of social credit to anyone who would listen—Green said that "social credit in Alberta (Canada) was sabotaged by British bankers and the privy council."

He explained that social credit, which was launched in Alberta several years ago, was "primarily the key to unlock to the people the plenty which we know exists."

The originator of social credit is M. C. H. Douglas, who appeared in the United States in advance his theory.

Paty Delivers Speech Before Local People

Candidate For Democratic Nomination Outlines Platform; Growers Are Favored

B. F. Paty, a candidate for the democratic nomination for governor of Florida, yesterday brought his campaign into Seminole County speaking here and at Oviedo, advocating a new tax structure for the state, old age pensions, bringing of new industries to Florida, fostering subsistence homesteads, securing of lower freight rates, better support for the citrus industry, and many other points which he said he would endeavor to put across if elected governor.

Speaking at the corner of First Street and Magnolia Avenue over public address system, Mr. Paty declared that the tax structure of Florida is generally antiquated and inequitable, and distorted and impractical from patchwork procedure through the years and that he proposed to change this for a workable system.

That he explained, "Florida needs no additional taxes to take care of its people or to add more complexities to its tax troubles. Florida's tax problem is also its debt problem and vice versa."

He said that during the boom Florida cities and counties contracted huge debts and have been unable to pay them off because of bondholders' manipulations, and that now the people of the state owe approximately as much as they did when the debts were first made. "Get rid of the bond manipulators and you have a state that is financially solvent," he declared.

In regard to old age pensions, Mr. Paty declared: "My position is that the people of the state should be protected by the Federal government for purpose of paying old age pensions. Those eligible for old age pensions in this state would be going to the Federal government if the Federal fund had been matched by the state."

Mr. Paty pointed out that Florida is in an ideal position to become a new industrial and agricultural center and that he would do everything in his power as governor to see that the state got many new industries and that it would be a South American trade could be developed and that many industrial concerns would benefit by establishing factories in this state.

Referring to his plank on subsistence homesteads, he stated that millions of acres of fertile and usable land have gone back to the state by reason of delinquent taxes.

"The plan I suggest," he asserted, "embodies a proposal to donate in the head of a 100-acre parcel, provided the donee will expend a reasonable amount for its improvement and development. Those who do not have sufficient money to purchase land should be given the right to purchase land on a lease basis."

The increase in the population of Florida, such as this plan would greatly increase its taxable values, increase its political power and commercial importance. Labor would be more specialized and the productive power of the unit would be greatly enhanced."

Mr. Paty interspersed his speech with occasional witticisms and ironic remarks. At one point he declared that "the bestowal of patronage by reason of relationship rather than merit is too commonly practiced and accounts in a large degree for its inefficient and wasteful administration of our state's affairs."

Mr. Paty will be in the county on Tuesday at 2:00 P. M. at the Commercial Building, Oviedo. He will be in charge in a few days.

Those interested may contact their county agents and county commissioners for further information.

3 Building Permits Issued At City Hall

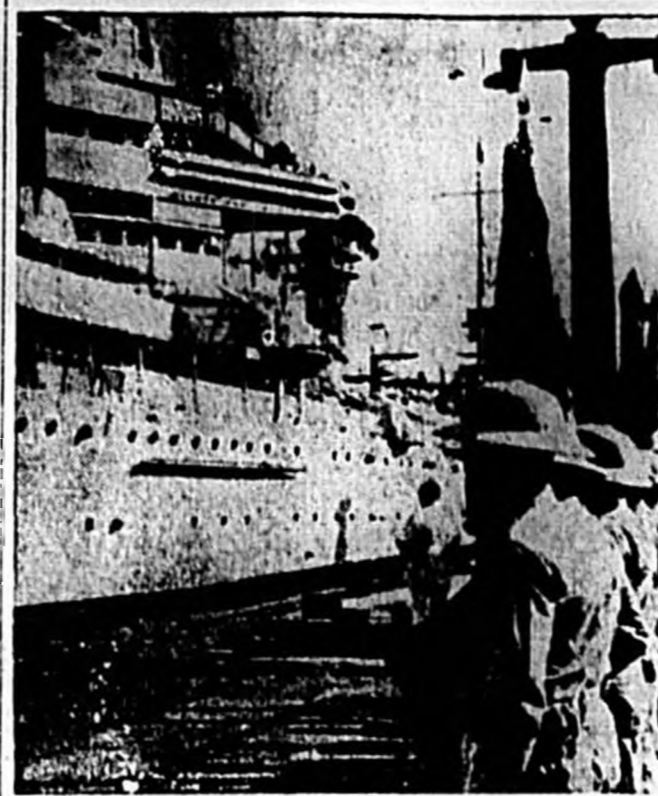
Emma Miller was granted a building permit at the City Hall recently to erect a frame building on Cypress Avenue to cost an estimated \$200.

A. P. Bundy was granted permission by Building Inspector Grady L. Duncan to make repairs to her home on West First Street estimated to cost \$100 while Jimmie Cowan received a permit to make repairs to a building on South Sanford Avenue at an estimated cost of \$50.

Daniel Carter Beard, founder of the Boy Scouts of America, will be in the city for the opening of the new stadium at Annapolis.

There will be a meeting of the

President Inspects Canal Zone Troops



Panama Canal Zone troops are shown lined up for inspection by President Roosevelt at the U. S. S. Tuscaloosa, with the nation's chief executive aboard, enters the canal from the Pacific.

Seminole Parents, Teachers Observe Anniversary Of P. T. A. Founding

In February of 1907, an assembly of parents, school teachers, clergymen, and statesmen convened in Washington, D. C. to discuss and formulate plans for the betterment of child life. At this meeting the National Congress of Mothers and the Parent-Teachers Association was organized. At the Seminole High School last night the 33rd anniversary of the founding of this organization was celebrated by the Seminole County Council of Parent-Teachers Association.

Several hundred persons were present for the celebration over which Mrs. E. D. Knottz, Council president, presided and heard Mrs. E. S. Felt, of Oviedo, vice president of the P. T. A. district, which includes Seminole County, declare that "the future belongs to the youth."

The parents and the school trustees of the county in building down to their parents a bond of democracy instilled by foreign knowledge and are glad to have all citizens of the county united in the American form of government. She also stated the necessity of parents, getting an extra simple for youth in the home, in business and in society.

In a fact history of P. T. A. Mrs. Theodora W. Biney was the first president of the National Congress which has as its objectives "to raise the standards of home life, to give young people opportunities to learn how to care for children, that they may have some work with the American form of government. She also stated the necessity of parents, getting an extra simple for youth in the home, in business and in society."

The following agencies with their headquarters in the county are also participating in the celebration: The Seed and Fertilizer Division of the Farm Credit Administration has an office at 10 North Court Street, Orlando. Herbert Deal is in charge. There are also offices at 216 Post Office Building, Oviedo. J. R. Rountree is in charge. The Production Credit Corporation has two representatives, Popkin, Mrs. J. J. and Popkin, Mrs. J. J. at the Seminole County Agricultural Association with J. R. Davidson as secretary, box 190, Sanford.

The P. T. A. organization will open an office with Mrs. E. D. Knottz in charge in a few days. Those interested may contact their county agents and county commissioners for further information.

City News Briefs

Circuit Judge Millard H. Smith made a routine visit to the Court House this morning.

Mr. and Mrs. Frank L. Miller have opened a tea room at 2116 Palmiston Avenue and will appear in the evening of dinner.

Edward E. Lane of this city will speak on "The History of Kiwanis" at the regular luncheon of the Leagues Club next Tuesday.

The monthly meeting of the Board of County Commissioners will be held in the Court House Tuesday, morning, beginning at 10:00 o'clock.

The Association of Baptist Brotherhoods will hold its quarterly meeting in DeLand next Tuesday night, according to local secretary Allen Moseley of the local club.

Germany Must Break British Stranglehold

Von Ribbentrop Tells Welles Nazis Are Unready To Enter Hull's Ideas

FDR's Emissary To Visit Hitler

Undersecretary Reports He Was Shown "Every Courtesy"

BERLIN, Mar. 1.—(AP)—Germany is not prepared even to discuss peace until and unless Britain's "stranglehold on the economic life of the world" is broken—this in effect was understood to have been the central theme of the first talk between President Roosevelt's fact-finding emissary and Adolf Hitler's foreign minister. However, Foreign Minister Joachim von Ribbentrop was understood to have told Undersecretary of State Sumner Welles that until Britain's dominance is ended Germany is unready to entertain Secretary Hull's ideas concerning the elimination of autarkism from the post-war economic world.

After the conference, Welles announced his interview with Chancellor Hitler had been set for 11:00 A. M. tomorrow. The American undersecretary was non-committal about his talk with von Ribbentrop but said he was shown every courtesy by the German government.

Officials Sure U. S. Won't Get In Foreign War

WASHINGTON, Mar. 1.—(AP)—Six months of the European war find American officials in charge of directing foreign policy more than confident that the United States will be able to stay out of the conflict.

Although some of the difficulties that arose in the first half year of the World War over violations of American neutrality have again arisen, they have not proved so serious as to endanger relations between this country and any of the belligerents, and quiet conversations are going on for the purpose of eliminating them. Welles said at the first six months of the present war finds the United States much less involved in the European fight than at the end of the first half year of World War.

A brief review may show why this is so. Since the outbreak of the European war around 150 neutral ships have been sunk. Not one was an American ship. Thirty Americans have lost their lives at sea—28 on the British liner Athenic and two on the Norwegian ship Ronde. But there is—so far—no possibility of such a loss of life on anyone's side.

After six months of investigation, the State Department is still not able to say that it was a German submarine—or any submarine—that sank the Athenic. The Ronde was sunk off Holland, apparently by a mine, but again it is difficult, if not impossible, to determine the cause of the mine.

Between the United States and Germany in the first half-year of the war there have been no diplomatic complaints of any kind. In the case of the City of Kin, taken by the Germans, the United States simply asked Germany to take steps to guarantee the safety of the American crew.

Between the United States and Britain, a half-dozen diplomatic notes and several aid-memoires have been exchanged, and France has been included in several of them. The notes have served to light up the zones of complaint—small shipments, taking American ships into the combat area, and the like—but the light is white rather than red.

LOCAL WEATHER

Partly cloudy tonight and Wednesday; slightly warmer in north and central portions.