



# Transit Committee Talks Cities, County Meet Asked

By DONNA ESTES

representatives of the cities of Casselberry, Altamonte Springs, Longwood and Winter Springs were requested by Mayor Granville Brown at the meeting between the board of county commissioners and

CALNO Council of Local Governments gathering Wednesday night.

Brown told commissioners Dick Williams and John Kimbrough, present for the meeting, he would like the joint meeting to discuss the goals of the Orange-Seminole-Osceola planning committee's transit study. Kimbrough suggested this group might be the best one to support as the authority to be in charge of the building of the inter-county beltline.

Altamonte Mayor Lawrence Swafford downgraded the effectiveness of the transit committee, maintaining it is being used to provide bus transportation to Orlando and Orange County and is of no benefit to Seminole.

Kimbrough said the Orlando-Orange Expressway Authority, now designated to oversee the construction of the beltline, somewhere along the line got involved in politics through the governor's office. Askew's patronage chairman in Orange, George Saunders, and James Green, the head of the authority.

Preceding this discussion, Buddy Gemeinhardt, an Altamonte employee, showed the CALNO group the roads which possible could be considered as access to the beltline.

He included Montgomery Road connecting to Wekiva Springs Road and the beltline at the north and to the proposed Maitland Boulevard at the south; widening and improving Raymond Avenue in Rolling Hills) through the Akerman property and connecting via Maitland Avenue to a tie in with Maitland Boulevard; Palm Springs Road at the Altamonte Mall, now under construction, to 434 and further north using Addis, Orlando and Aldus Streets or further east to connect with Range Line Road to Lake Emma; improvement of 427; for east-west circulation, Center Street with an overpass of Interstate 4 and North Street which now jogs to Charlotte and across.

He said, however, after considering it further he has come to the conclusion North Street should cut through to Dog Track Road Seminole Boulevard.

Gemeinhardt said improvement and construction in some cases of these roads would relieve part of the traffic problem on SR 436 and 14 and SR 436 and U.S. 1742 and provide internal circulation for the traffic in Altamonte Springs.

Williams said he would favor Gemeinhardt. He made it clear he is not in favor of the Raymond Street plan.

Swafford said he is not happy with the proposed bond issue and the cities have been ignored. "As far as Longwood is concerned, we will be in real good shape," Jaques countered.

The Altamonte mayor, speaking to Mayor Bill Grier of Casselberry, pointed to that city's need to have something done on Seminola Boulevard and suggested Grier look into this and eye toward having the road included in the bond issue.

Swafford said he is not happy with the proposed bond issue and the cities have been ignored. "As far as Longwood is concerned, we will be in real good shape," Jaques countered.

He recommended this action at the CALNO Council of Local Governments meeting Wednesday night to the consternation of Longwood Mayor Eugene Jaques.

Maitland Avenue, south SR 427, runs from its intersection in Altamonte with SR 436 to "Orange County comes out of

Turner Fined \$120,000

ERIE, Pa. (AP)—An Erie County judge has levied a \$120,000 fine against Florida millionaire Glenn W. Turner and one firm in his maze of corporate holdings for violating an injunction against doing business in the state.

Judge Lindley McClelland imposed the fine Wednesday against Turner and Dare To Be Great, Inc., a self-improvement course franchise, for some 600 alleged violations of the 1971 court ban.

The fine was the second handed down this year in Erie and has holdings.

In January, President Judge Edward Carney ordered Turner's Koscof Interplanetary, Inc., a cosmetics company, to pay \$50,000 for violating a similar injunction against operating in the state.

Joel Weisberg, director of the state Bureau of Consumer Protection, said Wednesday's fine was the largest ever levied against a company for violating the Unfair Trade Practices and Consumer Protection Law.

The 1971 court order was issued after attorneys for the state argued before McClelland that Pennsylvania residents had invested nearly \$2.4 million in Turner's holdings while earning only \$483,000.

Assault Charges Dismissed

By MARION BETHEA

The state has dropped charges of assault with intent to commit rape against Clifford Delaine Duncan, 6451 Gryllyne St., Orlando.

The 49-year-old mechanic was charged with a March 16 hailpoint assault upon the alleged victim in an orange grove.

According to assistant State Atty. Newman Brock the charges in Seminole were dismissed because Duncan drove to Polk County where the alleged rape took place after abducting the woman in Seminole.

Duncan is being prosecuted in Polk County upon rape charges and the assault with intent to commit rape is being included.

Altamonte Growth Prompts Discussion

By MARION BETHEA

Continued growth of this city which will be compounded with the opening of the new Altamonte Mall prompted a report to city council Wednesday night upon a traffic solution to the streets and roads in the municipality by zoning Director Buddy Gemeinhardt.

Citing one of the main problems in moving vehicular traffic is "getting from one side of 14 to the other," he suggested alleviating the congestion by overpasses at 14 at three locations which will improve the "internal circulation."

Gemeinhardt said there is a need to link the major roads in the city together.

Crossings were suggested at North Street, Center Street, SR 434, SR 436, Wymore Road and in one other area, which he did not designate.

He said had taken a survey of six crossings in Orlando between Ivanhoe Boulevard and Fairbanks Avenue and



REDBUG SCHOOL POSTER WINNERS RECEIVE TICKETS to Disney World as prizes presented by Principal James Neville. Winners (1 to 7) Sandra Dobson, third; Beth Thompson, second; Scott Hicks, first; John Sabatini, third; and Stacey Pezzynski, second. (Marilyn Gordon Photo)



HONORABLE MENTION IN RED BUG School poster contest went to (1 to 7) Gayle Long, Christa Sladek, Jane Williams and Julie Bryant. (Marilyn Gordon Photo)

## Men In Service

Richard K. McNab  
AGUADILLA, P.R. — U.S. Air Force Lt. Col. Richard K. McNab, son of Mr. and Mrs. D. K. McNab, 618 Elm Ave., Sanford, has received the meritorious service medal at Hamey AFB, P.R.

Col. McNab, an operations officer, was cited for outstanding duty performance at Scott AFB, Ill.

He now serves with the 3rd Weather Reconnaissance Squadron at Ramney.

The lieutenant colonel a veteran of 20 years, has completed a tour of duty in Vietnam.

He was commissioned in 1954 through the aviation cadet program and holds the aeronautical rating of command pilot.

Col. McNab was graduated from Seminole High School, in 1949, and the University of Florida. He is a member of Alpha Tau Omega.

His wife, Barbara, is the daughter of Mr. and Mrs. Lake Robbins, Cambridge, Md.

## Police Identify Corpse

FORT PIERCE, Fla. (AP)—One of two dismembered bodies found in a wooded area near bear has been identified as Susan Place, 16, of Oakland Park, police say.

Miss Place and a friend, Marie Jessup, 17, disappeared in September, 1972. The two dismembered and decomposed bodies were discovered Sunday.

Dr. Richard Sourvin of the Dade County Public Safety Department crime laboratory said Wednesday that teeth from one of the bodies was positively identified as belonging to Miss Place.

## Police Identify Corpse

Police identify a body as belonging to Miss Place.

Some diamonds were born to be a cut above. And Zales has them.

A diamond solitaire that whispers greatness. Ultimate simplicity, with a magnificent 1 carat solitaire in 14 Karat gold. It's destined to be a heirloom \$1225.

• Revolving Charge • Custom Charge • Bank American • Master Charge • Layaway

**ZALES**

We've got the whole world working for you!

OPEN MON. THURS. FRI. TIL 7 SANFORD PLAZA 322-1000

When it rains it sometimes pours.

Keep the elements out and comfort inside by improving your home with ...

**MONEY FROM OUR BANK**

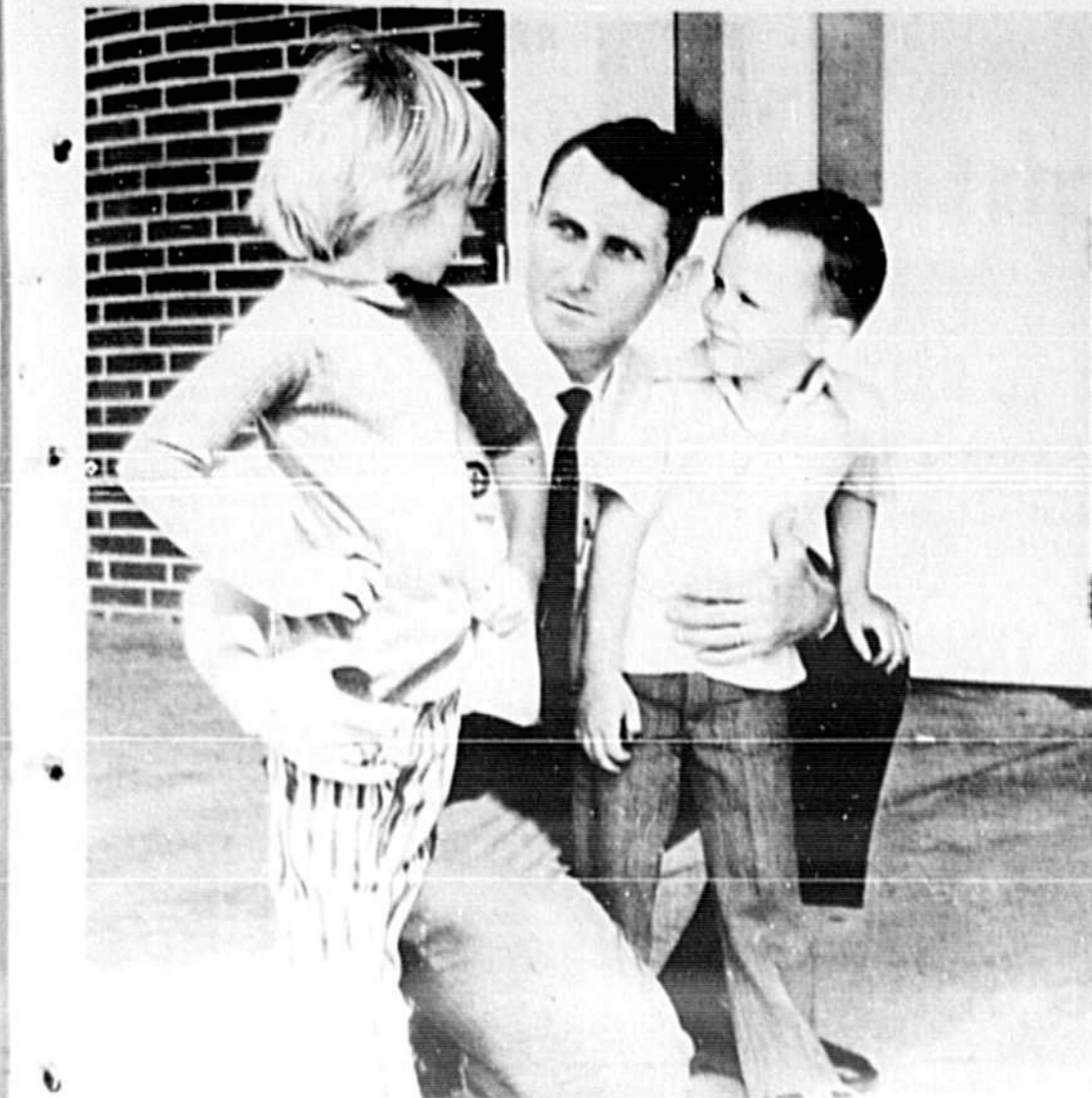
Sometimes it takes a crisis to provoke a decision. Don't wait until the roof falls in, but put your home in tip-top shape with a Home Improvement Loan from our Bank. Its no crisis when all you have to do is determine your needs, and see us for the cash.

**The Sanford Atlantic National Bank**

Published Daily and Sunday, except Saturday by The Sanford Herald, 200 N. French Ave., Sanford, Fla., 32771.

Second Class Postage Paid at Sanford, Florida 32771.

Subscription Rates by Carrier: Year \$28.40



FRIENDLY POLICEMAN LONGWOOD POLICE Chief Wesley Dowell makes friends with Kevin Houseknecht and Craig King during a Law Enforcement Week visit to the Lyman High School Child Day Care Center. (Ann Riley Photo)

## DeBary Incorporation Meeting Set For Tuesday

By ALAN R. EDWARDS

DEBARY — The April meeting of the DeBary Civic Association Tuesday at 7:30 p.m. in the Community Center will be turnover to the Public Affairs Committee to discuss the pros and cons of DeBary's incorporation.

The meeting will be moderated by William Keller, co-chairman of the incorporation study group. Members of the study group will attempt to answer questions from the floor.

The civic association is not pushing for incorporation. In fact, the members of the incorporation study group are not solidly in favor of incorporation. They have given generously of their time and money as a public service to determine the best route for DeBary residents to take for questions will be limited, by the moderator, to three minutes of speaking time.

The regular business meeting of the Civic Association will be dispensed with except for a few short announcements by President Wickens before the meeting is turned over to the public affairs committee.

All DeBary residents and property owners are urged to attend.

## Seminole Calendar

- April 5: South Seminole Community Library Association annual meeting and election of officers, 8 p.m. at the library in Altamonte Springs. Open to public.
- April 7: Rummage sale, rear of Chada's Grocery, 2415 Sipes Avenue, Midway, 1-5 p.m.
- April 7: Rummage sale, rear of Chada's Grocery, 2415 Sipes Avenue, Midway, 9 a.m. to 2 p.m.
- Sanford Senior Citizens Bus Tour to Lake Wales for Passion Play — Bus leaves Civic Center at 3:30 p.m. — For reservations call 322-9148.
- April 6: Bobby Lee Bradford, Ruth Ann Rabun, Bernice L. Maxfield, Johnny Jackson, Rebecca Johnson, Michael J. Reed, James D. Moye, Marva Banks, Eugene Fogle, Sharon Owens, John F. Grace, DeBary James F. Ricketts, Deltona Joseph Chika, Deltona Mark A. Peil, Osteen Linda Sotelin, Winter Park Rev. C. Arthur Beatty, DeBary Hugh Duffy, DeBary William W. Crumble, Deltona Albert J. Johnson, Deltona Louis T. Dilzo, Deltona Cleanthi Peters, Maitland Allen E. Goodrough, Osteen Homer Ballard, Oviedo

## Hospital Notes

- ADMISSION
- SANFORD: Rodriguez D. Alexander, Joyce Williams, Cynthia D. Jones, Altamonte J. Martin, Lowell R. Hines, Donald L. Keen, Sr., Edward O. Heehler, Doris A. O'Steen, Robert E. Arnie, Jennifer L. Perkins, Wesley L. Rich, Ward E. Locke, Rev. C. Arthur Beatty, DeBary Hugh Duffy, DeBary William W. Crumble, Deltona Albert J. Johnson, Deltona Louis T. Dilzo, Deltona Cleanthi Peters, Maitland Allen E. Goodrough, Osteen Homer Ballard, Oviedo
- BIRTHS
- Mr. & Mrs. Henry (Jennifer) Perkins a girl Sanford.
- Mr. & Mrs. Leonard (Joyce) Williams a boy Sanford.
- DISCHARGES
- SANFORD: Alvida Prime, Mrs. Arthur (Victoria) Harrell and girl

**FOR SALE!**

**ALUMINUM SHEETS**

USED OFFSET PRINTING PLATES 23 INCHES BY 36 INCHES

**15¢ EACH**

IDEAL LINING MATERIAL (They Just Fit Between Studs and Rafters)

NON RUSTING PURE ALUMINUM EASILY INSTALLED WITH STAPLEGUN

CAN BE CUT WITH SCISSORS IDEAL FOR ROOFING or INSULATING

**The Sanford Herald**

Published Daily and Sunday, except Saturday by The Sanford Herald, 200 N. French Ave., Sanford, Fla., 32771.

Second Class Postage Paid at Sanford, Florida 32771.

Subscription Rates by Carrier: Year \$28.40

**The Sanford Herald**

300 N. FRENCH AVE. PH. 322-2611

# Postal Deterioration Private Mail Firms Soar

By DAVID BURKE AP Business Writer

NEW YORK (AP)—The number of private mail companies in the nation has doubled in the past 18 months and backers say the growth will continue as magazine publishers and large bulk mailers seek ways to escape rising U.S. postal rate and service problems.

"With each deterioration of mail service, these firms grow by leaps and bounds," says James H. Rademacher, president of the National Association of Letter Carriers, which represents the nation's 220,000 mailmen, public and private.

By association count, there are now about 200 private firms in operation. But they remain relatively small and localized, hardly a dust speck in the Post Office's eye.

Forbidden by law from carrying first-class letter mail, largely lacking intercity service, most of them specialize in delivering advertising flyers, catalogues and occasionally magazines within a single city.

Outlets delivering circulars on a door-to-door basis have been around for a long time. But the trend toward private mail delivery got a major boost in 1968 when an Oklahoma City firm won attention by putting mail into plastic bags and sticking it onto customers' doorknobs, says Rademacher. It is illegal for private firms to use mail boxes.

The firm, Independent Postal System of America, "got so much publicity that a lot of people got the idea to do the same thing," says Rademacher.

IPSA, which sells route franchises of about 400 houses to free-lance mailmen, often housewives, now has about 140 offices in 31 states. Yet the company says its revenues have been doubling each year, in 1972 they amounted to a mere \$3 million, compared with well over \$2 billion for second- and third-class mail handled by the U.S. Postal Service.

Private mail delivery is often cheaper than the U.S. Postal Service's, says Richard Paplinski, vice president of Operations of Consumers Communications Services.

DISCOUNT DEPARTMENT STORES

**J.M. FIELDS**

DEPT. MANAGER

**SALE**

HUGE SAVINGS OFF OUR REGULAR LOW PRICES!

This is my SALE! I personally selected these values and the prices are truly sensational during this once-a-year bargain bonanza!

FANTASTIC VALUES IN HOME APPLIANCES TELEVISION, STEREO & AIR CONDITIONERS!

NORGE REF. 18 Cu. No Frost \$259	EMERSON PORT TV 12 Inch Setout Priced \$59
KELVINATOR REF. 14 Cu. No Frost \$229	RCA COLOR TV 19 Inch Compare & Save \$259
KELVINATOR REF. 20 Cu. No Frost Side by Side \$359	EMERSON PORT TV 19 Inch Big Screen \$99
PHILCO REF. 16 Cu. No Frost Auto Ice-Maker \$269	NATIONAL BRAND COLOR 18 Inch TV U.S. Made \$239
REVCO FREEZER 20 Cu. Chest \$199	RCA COLOR TV 19 Inch XL 100 \$399
NORGE WASHER Giant Cap. 20 lb. Wash \$189	EMERSON COLOR TV 35" Console Auto. Color \$399
WHIRLPOOL WASHER 18 Lb. Cap. Multi Cycle \$219	RCA COLOR Console \$449
30" ELECTRIC RANGE Your Choice Kelvinator or Magic Chef \$129	PILOT MOD. STEREO AM-FM 40 Watts Power \$199
FAIRCREST AIR COND. 10,000 BTU 115 Volts \$159	RCA PORT. TV 15" Remote \$119
FAIRCREST AIR COND. 18,000 BTU \$199	RCA COLOR TV 17" Auto Color \$289
FAIRCREST AIR COND. 21,000 BTU Heat & Cool \$299	PHILCO TV 8" Solid State \$69
RCA XL-100 25" DIAGONAL SOLID STATE COLOR TV \$529	INCLUDES 1Yr. IN-HOME SERVICE!

PHILCO ONE IDEA BETTER COLOR TV'S AND PORTABLES

Color TV's with the brilliant color and sharpness of detail that Philco's famous foil or compact black & white portables with excellent picture contrast & clarity!

Hurry In! See J.M. Fields Department Managers

**LOW PRICE!**

DOUBLE THE DIFFERENCE J.M. Fields exclusive PRICE PROTECTION POLICY

Within 10 days of purchase and upon furnishing proof that the identical item advertised here is available for less, J.M. Fields guarantees to give you double the difference!

**KEESBURG** 14th Street, U.S. Hwy. 27 Open Daily 9 a.m. to 10 p.m. Sun. Noon to 7 p.m.

**WINTER PARK** 561 N. Orlando Ave. Open Daily 9 a.m. to 10 p.m. Sun. 11 a.m. to 7 p.m.

**ORLANDO** Parkwood Plaza Shopping Ctr. Open Daily 9 a.m. to 10 p.m. Sun. 11 a.m. to 7 p.m.

**ORLANDO** Eastland Shopping Ctr. Open Daily 9 a.m. to 10 p.m. Sun. 11 a.m. to 7 p.m.

**ORLANDO** Fields Herndon Plaza Open Daily 9 a.m. to 10 p.m. Sun. 11 a.m. to 7 p.m.











# For A Shower Of Cash, Try An April Herald Want Ad

**13 Male Help Wanted**  
Mature person for part time pool sales. All trades supplied. Call 322-5888.  
14 Male Help Wanted  
Light Delivery Work  
Good steady pay. Full of part time work any hours, days, evenings or both. Apply 427 S. French Ave. Sanford, 322-5888.

**10 Men With Cars**  
Wanted For  
Light Delivery Work  
Good steady pay. Full of part time work any hours, days, evenings or both. Apply 427 S. French Ave. Sanford, 322-5888.

**24 Mobile Homes Rent**  
3 bedrooms, completely furnished, fenced yard, cabana furnished. Security deposit. Call 322-5888 after 3.  
STORING IT MAKES WASTE. SELLING IT MAKES CASH. PLACE A CLASSIFIED NOW!

**31 Houses For Sale**  
JOHNNY WALKER  
"The Others Are Looking, But We've Got It!"  
3 Months old immaculate 3 room ranch, located on a quiet street. 2 bedrooms, 1 1/2 baths, screened porch, garage, central heat & air.

**32 Lots & Acreage**  
SUBURBAN LOCATED LOTS WATERED, PAVED & RANCHETTES  
SANFORD REALTY  
7444 PINEVALE AVE. SANFORD, FL 322-3712

**42 Boats and Marine Equipment**  
36 Ft. Run Time Boat  
Excellent condition, speed & fuel economy. Call 322-5888 or 322-5270.

**50 Garage Rummage Sales**  
Backyard sale - Sat. Apr. 7, 10 a.m. to 4 p.m. 3000 Adams Ave. 4 pc. sectional sofa, 4 pc. dinette set, westinghouse gas oven, etc. Call 322-5888.

**51 Auctions**  
FURNITURE, ANTIQUES, ETC. Call 322-5888.

**52 A Stamps Coins**  
Public Auction  
Every Monday Night  
7 p.m.

**53 Miscellaneous For Sale**  
Kent Blue Lustrite Electric Carpet Shampooer for only \$1 per day. Call 322-5888.

**54 Household Goods**  
Green sofa bed and matching chair. Clean like new. Call 322-5888.

**55 Livestock And Poultry**  
SADDLE EQUIPMENT, ROOTS, WELTERS, WAG. Save At The Old Corner Western Shop. 19 S. 1st St. at Derby.

**56 Rabbits Wanted**  
White, color, quantity. 322-8232

**BILL BAKER VOLKSWAGEN, INC.**  
NEW 1973 VOLKSWAGEN SEDAN  
\$600\* a month  
BILL BAKER VOLKSWAGEN, INC.  
1100 S. 1st St. Sanford, FL 322-5888

**MACHINIST MILLING MACHINE OPERATOR**  
322-5888

**13 Male Help Wanted**  
WORKERS  
Apply in person to American Wood Products, 1307 Church Street, Longwood.

**21 Rooms For Rent**  
Large air conditioned bedroom, near airport. Call 322-5888.

**22 Apartments Rent Unfurnished**  
New 1 and 2 bedroom apartments, near airport. Call 322-5888.

**23 Apartments Rent Furnished**  
AVALON APARTMENTS  
116 W. 2nd St.

**24 Houses For Sale**  
WELKA APARTMENTS  
3245 Park Dr.

**25 Houses Rent Unfurnished**  
3 bedrooms, 2 baths, adults only. Call 322-5888.

**26 Houses Rent Furnished**  
Large bedroom house, fire room, carpeting. Call 322-5888.

**27 Mobile Homes Rent**  
2 bedrooms, mobile home, no pets. Call 322-5888.

**28 Situations Wanted**  
Will provide room, board and care to middle age lady in my home. Call 322-5888.

**29 Bookkeeper-Secretary**  
GOOD SALARY  
GOOD WORKING CONDITIONS  
EXCELLENT FUTURE  
FOR CAREER-ORIENTED PERSON

**30 The Sanford Herald Classifieds**  
Call today  
322-2611 or 831-9993

**SAVE NOW AT...**  
49 JEEP WAGONER \$2895  
70 JEEP WAGONER \$2995  
71 INTERNATIONAL SCOUT \$2695  
47 INTERNATIONAL SCOUT \$1095  
69 JEEP J3000 PICK UP \$995  
67 CHEVROLET IMPALA \$695  
**DON BALES' SANFORD MOTOR COMPANY**  
508 South French Ave. Sanford 322-4382

**14 Female Help Wanted**  
Ladies who like the outdoors to drive tractor. Call 322-5888.

**23 Apartments Rent Furnished**  
AVALON APARTMENTS  
116 W. 2nd St.

**24 Houses For Sale**  
WELKA APARTMENTS  
3245 Park Dr.

**25 Houses Rent Unfurnished**  
3 bedrooms, 2 baths, adults only. Call 322-5888.

**26 Houses Rent Furnished**  
Large bedroom house, fire room, carpeting. Call 322-5888.

**27 Mobile Homes Rent**  
2 bedrooms, mobile home, no pets. Call 322-5888.

**28 Situations Wanted**  
Will provide room, board and care to middle age lady in my home. Call 322-5888.

**29 Bookkeeper-Secretary**  
GOOD SALARY  
GOOD WORKING CONDITIONS  
EXCELLENT FUTURE  
FOR CAREER-ORIENTED PERSON

**30 The Sanford Herald Classifieds**  
Call today  
322-2611 or 831-9993

**31 Calbert IS IN DELTONA**  
building you new 2, 3, and 4 bedroom homes priced from \$21,100 to \$27,500 including lot. Up to 95% financing available.  
**Roberts & Gilman INC. REALTORS**  
904-788-2121  
Deltona Branch - Providence Plaza - Deltona

**32 Get IN THE CENTER OF THINGS**  
Read **Lifestyles**  
A Comprehensive Real Estate Guide To Better Living  
Published Every Sunday  
In The Herald

**33 Franklin Arms Apartments**  
ready for you!  
featuring...  
323-6650  
120 FLORIDA AVENUE SANFORD, FLORIDA 32771

**Break Thru '73 SALE**  
On All New Cars In Stock  
Break Thru '73 Contest Continues. We Are Passing The Factory Contest Savings To You - On All New Cars In Stock. We Now Have More '73 Models Available To Choose From Than Any Other Time This Year. Here Are A Few Examples:  
**'73 GOLD DUSTER**  
AS LOW AS \$3199  
**'73 SATELLITE**  
SEBRING 2DR. H.T.  
AS LOW AS \$3679  
**'73 FURY III**  
4 Door Sedan  
AS LOW AS \$3989  
**'73 CHRYSLER**  
NEWPORT 4 Dr. Sed.  
AS LOW AS \$4299

**15 Male-Female Help Wanted**  
Immediate openings at Fluor Corp. (a subsidiary of E. I. du Pont de Nemours & Co.) located on Orange Avenue. Call 322-5888.

**23 Apartments Rent Furnished**  
AVALON APARTMENTS  
116 W. 2nd St.

**24 Houses For Sale**  
WELKA APARTMENTS  
3245 Park Dr.

**25 Houses Rent Unfurnished**  
3 bedrooms, 2 baths, adults only. Call 322-5888.

**26 Houses Rent Furnished**  
Large bedroom house, fire room, carpeting. Call 322-5888.

**27 Mobile Homes Rent**  
2 bedrooms, mobile home, no pets. Call 322-5888.

**28 Situations Wanted**  
Will provide room, board and care to middle age lady in my home. Call 322-5888.

**29 Bookkeeper-Secretary**  
GOOD SALARY  
GOOD WORKING CONDITIONS  
EXCELLENT FUTURE  
FOR CAREER-ORIENTED PERSON

**30 The Sanford Herald Classifieds**  
Call today  
322-2611 or 831-9993

**31 Calbert IS IN DELTONA**  
building you new 2, 3, and 4 bedroom homes priced from \$21,100 to \$27,500 including lot. Up to 95% financing available.  
**Roberts & Gilman INC. REALTORS**  
904-788-2121  
Deltona Branch - Providence Plaza - Deltona

**32 Get IN THE CENTER OF THINGS**  
Read **Lifestyles**  
A Comprehensive Real Estate Guide To Better Living  
Published Every Sunday  
In The Herald

**33 Franklin Arms Apartments**  
ready for you!  
featuring...  
323-6650  
120 FLORIDA AVENUE SANFORD, FLORIDA 32771

**Break Thru '73 SALE**  
On All New Cars In Stock  
Break Thru '73 Contest Continues. We Are Passing The Factory Contest Savings To You - On All New Cars In Stock. We Now Have More '73 Models Available To Choose From Than Any Other Time This Year. Here Are A Few Examples:  
**'73 GOLD DUSTER**  
AS LOW AS \$3199  
**'73 SATELLITE**  
SEBRING 2DR. H.T.  
AS LOW AS \$3679  
**'73 FURY III**  
4 Door Sedan  
AS LOW AS \$3989  
**'73 CHRYSLER**  
NEWPORT 4 Dr. Sed.  
AS LOW AS \$4299

**16 Situations Wanted**  
Will provide room, board and care to middle age lady in my home. Call 322-5888.

**23 Apartments Rent Furnished**  
AVALON APARTMENTS  
116 W. 2nd St.

**24 Houses For Sale**  
WELKA APARTMENTS  
3245 Park Dr.

**25 Houses Rent Unfurnished**  
3 bedrooms, 2 baths, adults only. Call 322-5888.

**26 Houses Rent Furnished**  
Large bedroom house, fire room, carpeting. Call 322-5888.

**27 Mobile Homes Rent**  
2 bedrooms, mobile home, no pets. Call 322-5888.

**28 Situations Wanted**  
Will provide room, board and care to middle age lady in my home. Call 322-5888.

**29 Bookkeeper-Secretary**  
GOOD SALARY  
GOOD WORKING CONDITIONS  
EXCELLENT FUTURE  
FOR CAREER-ORIENTED PERSON

**30 The Sanford Herald Classifieds**  
Call today  
322-2611 or 831-9993

**31 Calbert IS IN DELTONA**  
building you new 2, 3, and 4 bedroom homes priced from \$21,100 to \$27,500 including lot. Up to 95% financing available.  
**Roberts & Gilman INC. REALTORS**  
904-788-2121  
Deltona Branch - Providence Plaza - Deltona

**32 Get IN THE CENTER OF THINGS**  
Read **Lifestyles**  
A Comprehensive Real Estate Guide To Better Living  
Published Every Sunday  
In The Herald

**33 Franklin Arms Apartments**  
ready for you!  
featuring...  
323-6650  
120 FLORIDA AVENUE SANFORD, FLORIDA 32771

**Break Thru '73 SALE**  
On All New Cars In Stock  
Break Thru '73 Contest Continues. We Are Passing The Factory Contest Savings To You - On All New Cars In Stock. We Now Have More '73 Models Available To Choose From Than Any Other Time This Year. Here Are A Few Examples:  
**'73 GOLD DUSTER**  
AS LOW AS \$3199  
**'73 SATELLITE**  
SEBRING 2DR. H.T.  
AS LOW AS \$3679  
**'73 FURY III**  
4 Door Sedan  
AS LOW AS \$3989  
**'73 CHRYSLER**  
NEWPORT 4 Dr. Sed.  
AS LOW AS \$4299

**17 Situations Wanted**  
Will provide room, board and care to middle age lady in my home. Call 322-5888.

**23 Apartments Rent Furnished**  
AVALON APARTMENTS  
116 W. 2nd St.

**24 Houses For Sale**  
WELKA APARTMENTS  
3245 Park Dr.

**25 Houses Rent Unfurnished**  
3 bedrooms, 2 baths, adults only. Call 322-5888.

**26 Houses Rent Furnished**  
Large bedroom house, fire room, carpeting. Call 322-5888.

**27 Mobile Homes Rent**  
2 bedrooms, mobile home, no pets. Call 322-5888.

**28 Situations Wanted**  
Will provide room, board and care to middle age lady in my home. Call 322-5888.

**29 Bookkeeper-Secretary**  
GOOD SALARY  
GOOD WORKING CONDITIONS  
EXCELLENT FUTURE  
FOR CAREER-ORIENTED PERSON

**30 The Sanford Herald Classifieds**  
Call today  
322-2611 or 831-9993

**31 Calbert IS IN DELTONA**  
building you new 2, 3, and 4 bedroom homes priced from \$21,100 to \$27,500 including lot. Up to 95% financing available.  
**Roberts & Gilman INC. REALTORS**  
904-788-2121  
Deltona Branch - Providence Plaza - Deltona

**32 Get IN THE CENTER OF THINGS**  
Read **Lifestyles**  
A Comprehensive Real Estate Guide To Better Living  
Published Every Sunday  
In The Herald

**33 Franklin Arms Apartments**  
ready for you!  
featuring...  
323-6650  
120 FLORIDA AVENUE SANFORD, FLORIDA 32771

**Break Thru '73 SALE**  
On All New Cars In Stock  
Break Thru '73 Contest Continues. We Are Passing The Factory Contest Savings To You - On All New Cars In Stock. We Now Have More '73 Models Available To Choose From Than Any Other Time This Year. Here Are A Few Examples:  
**'73 GOLD DUSTER**  
AS LOW AS \$3199  
**'73 SATELLITE**  
SEBRING 2DR. H.T.  
AS LOW AS \$3679  
**'73 FURY III**  
4 Door Sedan  
AS LOW AS \$3989  
**'73 CHRYSLER**  
NEWPORT 4 Dr. Sed.  
AS LOW AS \$4299







NEVER TOO OLD  
Steven Amoroso of Deltona waltzes partner Lydia Schmidt (Charles Edwards Photo)

**Trinity Prep's Ecological Concern**

Ecology is not just an academic course at Trinity Prep but rather a living concern. The Headmaster and students have been able to establish a wildlife refuge on an island that is located on the campus. This island preserve, which is now recognized by the National Audubon Society, is home for many peacocks, quail, ducks, pleasant and even a family of otters. The ecology class students besides mapping the island have developed it as an entire self-contained ecosystem.

This scientific involvement and concern is only one facet of Trinity total science program. Trinity plans to participate in the National Science Foundation program in which last year 4 or 5 students were honored with a summer grant to work with some of the top college professors from universities all over the United States. This highly



TRINITY'S ECOLOGICAL CONCERN

regarded honor is not unusual for Trinity to receive since 30 pct. of her senior class this year have earned Florida's Certificate of Merit.

Because Trinity Prep has and is expanding her facilities, there are now openings at each grade level for the fall of 1973. Canon Hay, the Headmaster, welcomes your visit to the School, or send for the School's catalog, 8400 Altona Avenue, Orlando, Florida 32807. Phone 671-4140. Trinity is a co-ed day school, grades seven through twelve.

**Difficult To Pinpoint Quality Clothing Still Elusive**

By HUGH THOMPSON  
Copley News Service

Quality, that word we hear bandied about more every day, is much sought after but still elusive.

It is particularly difficult to pinpoint in men's clothing when so much of the fine craftsmanship is hidden from the eye. In addition to relying on a well-known brand name, what can the average consumer do to check on the quality of a garment?

There are certain features that are usually found in well-tailored garments and, once you find these, you can be reasonably sure that the inside is constructed as carefully as the outside.

As for the outside features, the man choosing a suit or jacket should look for these:

—A jacket collar that clings to the neck (photo 1). Stand-up collars may be great in some women's wear, but they have no place in men's clothing. Careful workmanship contours the cloth to drape around the neck.

—A smooth, well-formed shoulder line, leading from the neck to the sleevehead (photo 2).

—Pattern matching, or continuation of the design unbroken from one part of the garment to another; from sleeve to torso, from pocket to jacket (photo 2), back jacket seam, collar to torso, lapels that each have the pattern spaced identically.

—Is the sleeve set carefully? The sleeve is made larger than the armhole (photo 2) to provide a graceful contour and permit freedom of movement.



**Deltona Fun, Travel Club At Party, Dinner, Dance**

By FANNETTE EDWARDS

DELTONA—The Deltona Fun and Travel Club really lived up to its name recently in the Deltona Community Center, when 200 members enjoyed a chicken dinner with trimmings, cake, coffee and soft drinks, and danced to the music of "Stove Pipe Perkins" Percolators.

The band, consisting of George "Stove Pipe" Perkins, leader on guitar; Kenny Landrum, guitar; Pop Adams, drums (and a mean drum, at that) and Ben Hildredill, bass, played music from the '20s to the '70s.

May 7-13 as Senior Citizens Week in Disney World and will have on sale at all Sears and Moss Stores special tickets which senior citizens may purchase.

Should any clubs wish to order, they may do so. Sinatra immediately asked for May 11 for the Fun and Travel Club and was accepted.

May 9 the Club will take a day's trip to Weeki-Wachee and Homosassa Springs, leave 8:30 a.m., return at 8:30 p.m.



SWINGING SENIOR CITIZENS  
Mr. and Mrs. Pearson Little dance to the music of "The Percolators" (Charles Edwards Photo)

We are experiencing one of our best years in auto financing because auto buyers have become aware of our lower rates through direct financing.

Ralph

Call Ralph Pezold or Mickey Hickson  
We Invite You To Compare

FLORIDA STATE BANK  
INSTALLMENT DEPT.

Downtown Sanford Member FDIC 322-1611

VOTED BEST DANCERS  
at Fun and Travel Club party were Mr. and Mrs. Joseph Sinatra. (Charles Edwards Photo)

**SAVE ON QUALITY SEALY BEDDING!**

APRIL Clearance

Some Matched! Some Mis-Matched!

SAVE ON SEALY HOTEL-MOTEL SETS

MATTRESS OR BOXSPRING \$38

★ FAMOUS SEALY "WINSLOW QUILT" SETS!

MATCHED AND MIS-MATCHED MATTRESS OR BOXSPRING \$48

★ SEALY GOLDEN DREAM LUXURY, FIRM GUARD QUILT SUPREME and KINGSTON SUPREME!

MATCHED AND MIS-MATCHED MATTRESS OR BOXSPRING \$58

APRIL BEDDING SPECTACULAR!

- ★ SOME HAVE MIS-MATCHED COVERS!
- ★ CHOOSE FROM LUXURY QUILTS WITH FOAM PADDING!
- ★ CHOOSE STRIPES, PRINTS, OR EVEN DAMASK COVERS!
- ★ ALL ARE FIRST QUALITY MATTRESSES WITH FIRST QUALITY BOXSPRINGS!
- ★ WHATEVER YOU DO, DON'T MISS THIS GREAT BEDDING SALE!

Limited Quantities — Sanford Store Only!

CONVENIENT TERMS! FREE DELIVERY!

1100 FRENCH AVE SANFORD 322-7953

A Letter from Lori

THE FLORIDA SENATE  
TALLAHASSEE

SENATOR LORI WILSON  
14TH DISTRICT

Your legislature begins its annual session on Wednesday, April 3rd. For sixty days, I'll be working fulltime for you in Tallahassee.

For the past three months, we've been holding meetings throughout Crawford, Seminole, Osceola and Orange Counties to discuss legislation which will be coming up. Many people have given me very helpful thoughts on matters of particular interest to this area.

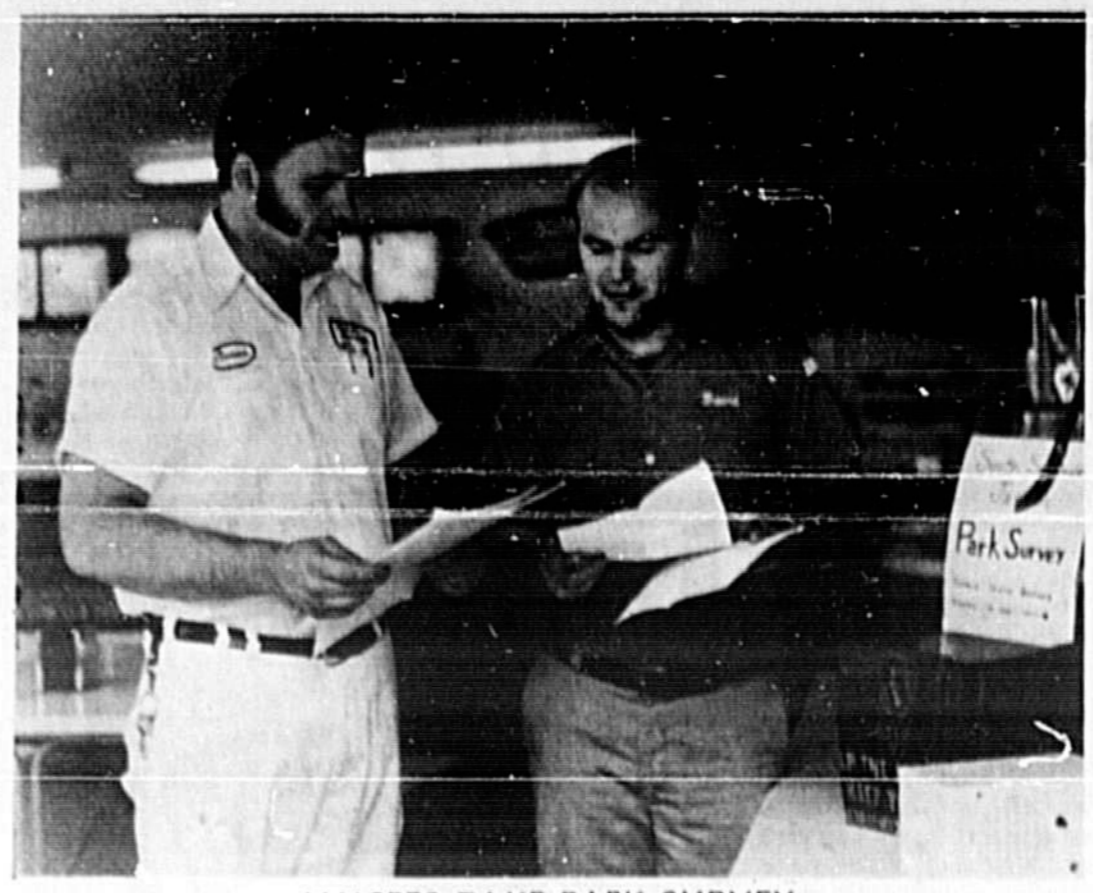
In my committee and on the Senate floor, I want to serve your interests in every action I take and every vote I cast. It is very important that we keep in close touch during the session. To help do that, volunteer aides will continue to operate your District 16 office on Merritt Island while I am fulltime in Tallahassee.

You can reach me through the District office by writing: 250 E. Merritt Island Causeway, Merritt Island, Florida, 32952 or calling 305/452-1081

In Tallahassee simply write to me at the Florida Senate, State Capitol, Tallahassee, 32304. Or call 904/488-5491.

Please clip this letter and save it so that you can keep in touch with me and help me serve you in the best possible way.

Independently yours, Lori



JAYCEES TAKE PARK SURVEY  
DENNIS SOBRI (l) and David D'Amico, South Seminoles Jaycees, check surveys turned in at an Altamonte business, expressing public's preference for park facilities. Survey forms are available at many South Seminoles locations and at The Sports Shop in Sanford Plaza.

**Jaycees Project Parks Survey Set**

By JANE CASSELBERRY

A survey is being conducted by South Seminoles Jaycees. Although park surveys have

been slow thus far in coming in (the first week brought in only 55) this small sampling indicates picnic areas, playgrounds, and swimming beaches are the most popular. For after hour recreational facilities at public schools, tennis courts, basketball courts and ball fields are most wanted. Preference by some for motor bike trails and horse paths were also stated.

In answer to the question "Would you wish to have the present park development schedule accelerated with additional ad valorem taxes," 29 "yes" and 11 "no." Twelve preferred 1-10 mill and five 1/2 mill.

Nineteen approved having the present school ground public facilities schedule accelerated with additional ad valorem taxes while 16 opposed.

Thirty-two said yes to release of park land to local civic groups to develop the public use while seven said "no."

Park surveys may be left at the following places: Altamonte Springs Florist, SR 436; Sokol's, Sanford and Altamonte Springs; Webb's Fern Park; Dipper Dan, Seminole Plaza; Eckerd's, Butler Plaza; Standard Station, 431 E. 14; Carvel Ice Cream, Zayre Plaza; Mr. Steak, Casselberry; Jaycee Information Center, Casselberry; and The Sport Shop, Sanford Plaza.

concerning the development of county parks to determine the preference of the citizens. Although park surveys have been slow thus far in coming in (the first week brought in only 55) this small sampling indicates picnic areas, playgrounds, and swimming beaches are the most popular. For after hour recreational facilities at public schools, tennis courts, basketball courts and ball fields are most wanted. Preference by some for motor bike trails and horse paths were also stated.

concerning the development of county parks to determine the preference of the citizens. Although park surveys have been slow thus far in coming in (the first week brought in only 55) this small sampling indicates picnic areas, playgrounds, and swimming beaches are the most popular. For after hour recreational facilities at public schools, tennis courts, basketball courts and ball fields are most wanted. Preference by some for motor bike trails and horse paths were also stated.

concerning the development of county parks to determine the preference of the citizens. Although park surveys have been slow thus far in coming in (the first week brought in only 55) this small sampling indicates picnic areas, playgrounds, and swimming beaches are the most popular. For after hour recreational facilities at public schools, tennis courts, basketball courts and ball fields are most wanted. Preference by some for motor bike trails and horse paths were also stated.

concerning the development of county parks to determine the preference of the citizens. Although park surveys have been slow thus far in coming in (the first week brought in only 55) this small sampling indicates picnic areas, playgrounds, and swimming beaches are the most popular. For after hour recreational facilities at public schools, tennis courts, basketball courts and ball fields are most wanted. Preference by some for motor bike trails and horse paths were also stated.

concerning the development of county parks to determine the preference of the citizens. Although park surveys have been slow thus far in coming in (the first week brought in only 55) this small sampling indicates picnic areas, playgrounds, and swimming beaches are the most popular. For after hour recreational facilities at public schools, tennis courts, basketball courts and ball fields are most wanted. Preference by some for motor bike trails and horse paths were also stated.

RENT a brand new SCM-Marchant ELECTRONIC CALCULATOR

\$10 a month and apply 85% of rental to purchase price \$119.95

george stuart

132 SAN BERNARD ORLANDO FLA.

**Caravan Europe**

57 different tours to everywhere in Europe. Personally escorted, all expense.

Stop In Or Call Sun Travel For Your FREE 211 Page Tour Book.

SUN TRAVEL AGENCY

Authorized Agent For All Airlines And Steamship Lines No Charge For Our Services

Open Thurs Nights By Appointment Ph. 323-4650 Sanford

**MEDCO DISCOUNT**

HWY - 17-92 - NEXT TO A&P - ORLANDO DR AT 27th SANFORD

<p><b>GILLETTE PLATINUM PLUS</b></p> <p>10's \$1.08</p> <p>Reg. 1.19</p>	<p><b>PLAYING CARDS</b></p> <p>3 FOR 77¢</p>	<p>FILLED <b>EASTER BASKETS</b> \$1.98 TO \$5.95</p> <p>COUPON</p> <p>NAME _____</p> <p>ADDRESS _____</p> <p>PHONE _____</p> <p>REGISTER - NO OBLIGATIONS</p>
<p><b>NESTEA ICED TEA MIX</b></p> <p>10 Pks. 88¢</p> <p>EACH PACK MAKES 16oz</p>	<p><b>LADIES PUSH BUTTON UMBRELLAS</b></p> <p>NYLON SOLID COLORS \$2.88</p> <p>4" VALUE</p>	<p>REGISTER AT MEDCO FOR SEMINOLE COUNTY'S LARGEST EASTER BASKET</p> <p><b>JELLY EGGS</b> 2 lb. 69¢</p> <p><b>WHITMANS EASTER EGGS</b> 39¢ &amp; 59¢</p>
<p><b>SHOWER CAPS</b></p> <p>Reg. \$1.00</p> <p>VALUE 66¢</p> <p>BOUFFANT STYLE</p>	<p><b>EASY OFF OVEN CLEANER</b></p> <p>16oz SPRAY CAN 87¢</p> <p>REG. \$1.19</p>	<p><b>ELECTRICAL APPLIANCES</b></p> <p><b>SUPER MAX Style Dryer</b> \$18.77</p> <p><b>FOLDING TRAVEL WITH CORD IRON</b> \$2.99</p> <p><b>SUNBEAM TOASTER</b> \$11.88</p> <p>2-SLICE- Reg. \$16.00 LIST</p>
<p><b>GENERAL ELECTRIC PORTABLE MIXER</b></p> <p>Reg. \$12.00</p> <p>M-24- \$7.66</p>	<p><b>ROLAIDS ANTACID TABLETS</b></p> <p>3 FOR 33¢</p> <p>Reg. 20¢ EACH ROLL</p>	<p><b>POLAROID COLOR FILM No. 108</b></p> <p>\$3.79</p>
<p><b>Vitamin E CAPSULES</b></p> <p>400 IU NATURAL</p> <p>100 CAPSULES \$2.99</p>	<p><b>COSMETIC SPECIALS!</b></p> <p>REG. \$3.00</p> <p><b>AMBUSH OR TABU COLOGNE</b> 1 OZ. SIZE \$1.99</p> <p><b>MAYBELLINE ULTRA SHADOW</b> 56¢</p> <p><b>REVLON ETERNA</b> 27. Reg. \$15.00 \$10.00</p>	<p><b>GRECIAN FORMULIA 16 FOR GRAY HAIR</b></p> <p>4oz SIZE \$2.66</p>
<p><b>SERGEANTS SENTRY FLEA COLLAR</b></p> <p>Reg. \$1.99</p> <p>VALUE \$1.27</p>	<p>HOW MUCH ARE YOU OVERPAYING FOR PRESCRIPTIONS? BRING YOUR NEXT PRESCRIPTION HERE - LOWEST PRICES</p> <p><b>MEDCO DISCOUNT PRESCRIPTION CENTER</b></p> <p>PHONE 322-5060</p>	<p><b>Caravan Europe</b></p> <p>57 different tours to everywhere in Europe. Personally escorted, all expense.</p> <p>Stop In Or Call Sun Travel For Your FREE 211 Page Tour Book.</p> <p>SUN TRAVEL AGENCY</p> <p>Authorized Agent For All Airlines And Steamship Lines No Charge For Our Services</p> <p>Open Thurs Nights By Appointment Ph. 323-4650 Sanford</p>



# Farmers Say They're Not Any Richer

By MARIE DOTY  
Copley News Service

SUGAR GROVE, Ill.—A recent cartoon depicts an angry woman at the meat counter. Eyeing the \$2.07-a-pound price for liver she huffily tells the butcher, "I want it for dinner—not a transplant."

Unhappy as we are about the high cost of beef, consider the Japanese housewife. According to a pamphlet distributed by the American National Cattleman Association, beef is priced at approximately \$7 a pound in Japan.

There isn't exactly an abundance of beef in South America, either. There, the governments have resorted to rationing in several countries. Argentina, the home of the Pampas cattle ranches, permits the people to eat beef only every other week.

Ted and Sue McCannon have about 800 cattle on the two farms they operate here near Aventura with Ted's parents, Frank and Helen McCannon. They are young, still in their 20s, and good-looking, exuberant salesmen for beef.

Why the out-of-sight beef prices in the United States? "Agriculture has taken a back seat so far as labor is concerned," McCannon said. "It's just starting to catch the rest of the economy."

Pointing out that the U.S. beef is by far the best quality in the world, McCannon listed several reasons for the higher prices. One is the higher pay scale for the nation's workers. "The more wages we take home the more meat we want to buy. Everyone is making more in increased wages," he said, "and it's the matter of supply and demand. The demand has increased faster than the supply."

He added indignantly, "Another thing that gets my goat—a couple of senators complain about the drugs used."

Silbestrol, an injection used to fatten cattle for the market, was declared illegal Jan. 1. Without the use of silbestrol, it will cost more to get the cattle ready to butcher.

"Someone has to absorb that cost," McCannon said. "It's got to be passed on and it's to the consumer."

He also feels that the changed standards of the Food and Drug Administration (FDA) will hurt the economy.

"Now when a new drug is brought out, it takes five or six years to have it tested and another five or six to get it approved by the FDA," he said. "The cost is prohibitive by then, and often the drug is almost out of date."

McCannon gave as an example a new—and expensive—drug on the market that had taken six years to test and another six for FDA approval. He said that the FDA had required so much research to get the drug on the market that the company had to go to a lot of advertising—between \$5 and \$6 million. All of which eventually is paid for by the consumer.

"It's phenomenal how much of the cost of food we see on the shelves is due to advertising, marketing and packaging," McCannon said. "If the farmer would give the millers the wheat it would only lower bread one cent."

"People eat out more often now. The top item on the menu is steak," he said. "So many couples both work now, and when she comes home she wants food with a built-in maid service. This cost doesn't go to the farmer."

"One final thing is the wages that labor receives. The beef is trucked, processed and trucked again to the stores, all by union labor."

What about the farmers' costs? Most Illinois beef feeders buy the young animals elsewhere and "finish" them out.

"The animals we buy and bring here weigh from 400 to 600 pounds. I've got cattle that I couldn't even afford to replace now," Ted stated. "Western cattle with any reputation will cost you 72 cents a pound, although it runs from 50 cents."

"The cattle is brought in, vaccinated, given vitamin shots and put on special antibiotic feeds as calves. We spend nearly a year with the animal."

**WE COULD CARPET WASHINGTON**  
AKRON, Ohio (AP)—Enough latex foam-backed carpeting will be made in the U.S. this year to cover Washington D.C., according to the Goodyear Tire & Rubber Co.

Approximately 157 million square yards of broadloom carpeting produced last year—enough to carpet 8 million large living rooms—had latex foam backing which makes carpeting easier and more economical to install, says Goodyear, a supplier of synthetic latex.

It's going to take at least \$125 to \$145 worth of feed in that animal," he said. This year Mother Nature added to their problems. The wet weather caused trouble with respiratory disorders. "We usually figure a two per cent death loss," McCannon said. "I understand the Southwest has taken a 10 to 15 per cent death loss this year so the price of meat will not go down much for awhile."

Now about the high prices the farmers are receiving. "In 1966 I did get \$40.25 for a head of beef. This is the first year we've touched that," McCannon said. "We're just now back to where the prices were over 20 years ago. Industry could take a lesson from the farmer for efficiency."

When McCannon's father started farming he borrowed \$1,200 and bought a new tractor, disk, harrow, drag and a "couple of other pieces." This was in the 1940s.

MI. N. OF 434 ON U.S. 17-42. LONGWOOD  
Demonstration Pool Now Open!

## George Stuart's April Trade-In Sale

Before the current price increases and sharp dollar devaluation, George Stuart bought thousands of typewriters, adding machines, calculators and office equipment at the old prices. We have now on hand more than 5,000 new office machines purchased at the old prices. While they last, we will move them out at the lowest prices possible!

TRADE IN YOUR OLD TYPEWRITER, ADDING MACHINE, CALCULATOR, DUPLICATING MACHINE TOWARD THE PURCHASE OF A NEW MACHINE. Maybe you have an old "relic" and the cost for repairs is too high. Trade it in. Maybe you bought some of the mail-order "cheapies" in the electronic calculators that are hardly worth taking home... trade them in.

### Royal Digital V Pocket-Sized Electronic Calculator



Easy to Read, Easy to Operate. Has chain division, chain multiplication, direct credit balance, 8-digit display, floating decimal, constant AC Recharge adaptor. Self-contained DC Rechargeable Battery. Comes with carrying case. Mfrs. Regular Price \$149.95, less trade-in allowance \$50.00, net \$99.95. And you may pay as little as \$6.50 a month.

**\$99.95**

plus trade-in\*

### Royal's Famous Office-Size Model I-K Electronic Calculating Machine



Full size keyboard. Large, easy-to-read numerals, latest model, brand new. 10-Digit Readout, Constant Percentage Key, Automatic Negative Sign, Chain Division and Multiplication. Mfrs. Regular Price \$199.95, less trade-in allowance \$100.00, net \$99.95, and you may pay as little as \$6.50 a month.

**\$99.95**

plus trade-in\*

### Royal's Desk Model GT Electronic with Grand Total Extra Memory



Has 12-digit readout. Reverse key, Constant Key, Automatic Overflow, Product and Quotient Accumulation. Mfrs. Regular Price \$269.95, less trade-in allowance \$120.00, net \$149.95, and you may pay as little as \$10 a month.

**\$149.95**

plus trade-in\*

### Royal's Famous New Model XII Electronic Printing Calculator



It adds, subtracts, multiplies, divides - electronically - and it prints the answers. Full 12-column read-out capacity and late model extra features. Uses standard 2 1/4" adding machine tape. Mfrs. Regular Price \$369.95, less trade-in allowance \$140.00, net \$229.95. And you may pay as little as \$16.00 a month.

**\$229.95**

plus trade-in\*

### Full Size Electric Portable

The new Royal 1200 Electric has a full size electric keyboard. Two-color ribbon. Full 12-inch carriage. Automatic repeat keys (x) (1) (and) comes complete with carrying case. Weighs 18 lbs. 12 oz. Mfrs. Regular Price \$149.95, less trade-in allowance \$70.00, net \$79.95. And you may pay as little as \$6.00 a month.



**\$79.95**

plus trade-in\*

### Royal Custom III

Royal's finest heavy-duty manual portable. Full-size 88-character keyboard. Comes with Royal's famous quick responsive touch and full range of exclusive typing conveniences. Magic Margin Control, Twin-Pak ribbon cartridge, Touch Control Selector. Weighs 21 lbs. 2 oz. Mfrs. Regular Price \$105.95, less trade-in allowance \$46.00, net \$59.95. And you may pay as little as \$5.50 a month.



**\$59.95**

plus trade-in\*

### Royal Mercury Portable

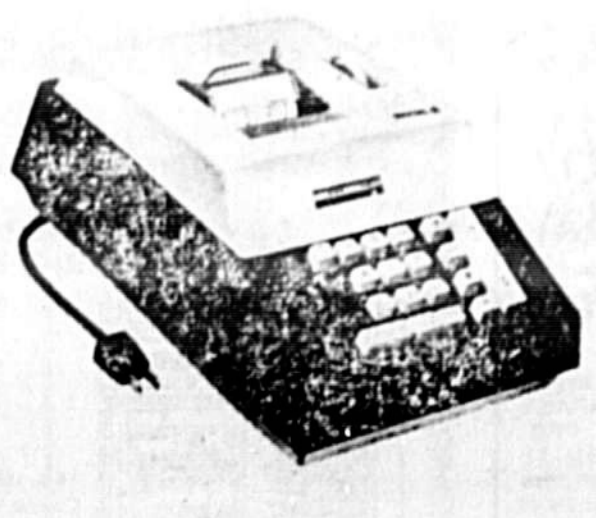


One of the finest, light weight portables on the market. Complete with carrying case. 1 1/2 and 2-line spacing. Touch-Sat margins. Automatic ribbon reverse. Two-color ribbon and stencil selector. Full-size 88-character keyboard. Touch regulator. Weighs 11 lbs. 8 oz. Mfrs. Regular Price \$59.95, less trade-in allowance \$35.00, net \$24.95.

**\$24.95**

plus trade-in\*

### Royal All-Electric Adding Machine



Royal Model 762 is all electric and has direct credit balance, total and sub-total keys, electric clear, electric subtraction, two-color ribbon, split zero keys, number and repeat keys, 10-column listing, 11-column totaling capacity. Weighs 13 lbs. Mfrs. Regular Price \$119.95, less trade-in allowance \$60.00, net \$59.95, and you may pay as little as \$5.50 a month.

**\$59.95**

plus trade-in\*

\*Your old typewriter, adding machine, calculator, duplicating machine must be complete as to parts and in working order. If you don't have a trade-in, our used machine department has a number for sale as low as \$10 each.

Check with **george stuart**  
133 East ROBINSON ORLANDO, FLORIDA

FLORIDA'S LARGEST  
PRINTED CIRCUIT BOARD SHOP

ALL PRICES COVER MERCHANDISE ON HAND ONLY AND ARE F.O.B. OUR ORLANDO STORE.

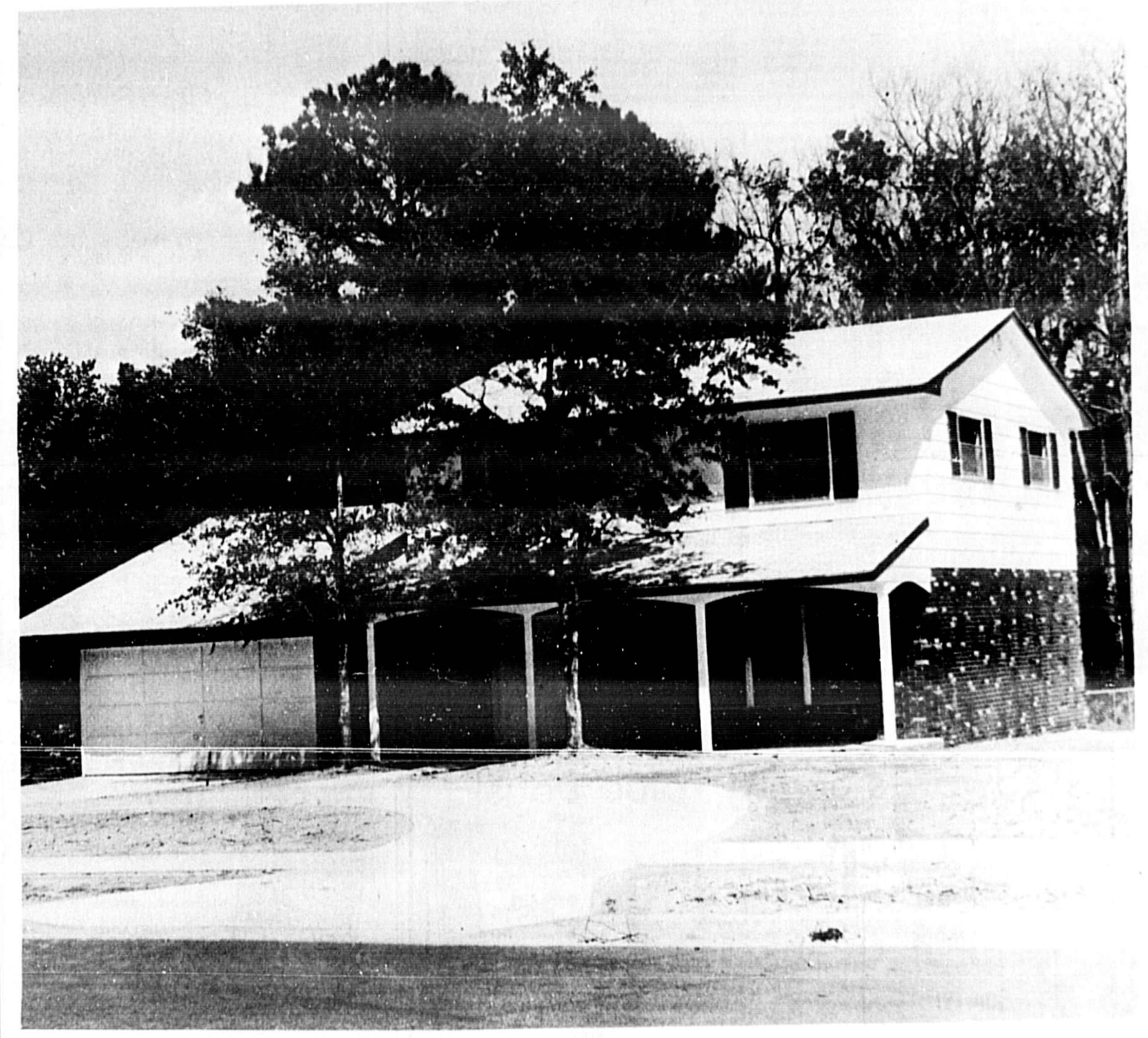
Store Hours: Monday and Friday 8:15 a.m. to 6 p.m. Tues., Wed., Thurs., Sat. 8:15 a.m. to 6 p.m.

Two Free Stenciled Parking Lots So You Can Park!

# The Sanford Herald

The Sanford Herald Thursday, April 5, 1973—1D

## Home & Garden



Ideas to add beauty and charm to your surroundings.





