

Thursday WE CLOSE FRIDAY Armistice Day Saturday

10 lbs. Ga. Yams 10c Triple "S" Groceteria 10 lbs. No. 1 White Potatoes 17c

GEORGIA PEANUT PIG PORK THE FLAVOR IS THERE

Hams 19c Shoulder 15c Sides 12 1/2c Heads 8c lb.

Ga. Baby Beef all Corn Stall Fed

STEAKS 15 1/2c and up. ROASTS 12 1/2c lb. up

STEW 10c lb. Real Ground MEAT lb. 17 1/2c

HAMBURGER MIXED 2 lbs. 19c

Remember This -- You Get What You Pay For

All Guaranteed PORK SAUSAGE lb. 23c

Full Line Fruit Cake Material. All Fresh

Swansdown Pl. Flour 5 LBS. 23c 10 LBS. 43c

This Flour is as High Class as is the Cake Flour.

BREAD 2 for 13c NEW PURE CANE SYRUP 1/2 Gal 33c

ALL TALL MILK The Brand you like, with orders 5 1/2c

4 lb. Carton LARD 39c With any brand or size Flour you buy.

10 lbs. Sunset Gold S. R. FLOUR 23c 5 lbs 13c

5c MATCHES for 3c 5c BLK. PEPPER 3c

5c SALT for 3c POTTED MEAT 3c

4 LBS. WHOLE GR. RICE 17c THE BEST HON. RICE 3 lbs 19c

ORANGES, doz. 10c 5 Fancy Grapefruit 9c

Best Line Fruit & Vegetables To Be Had

Twenty years ago the Armistice was signed resulting in unrestrained expressions of joy over the fact that peace had come at last.

Work Of American Red Cross Shows Volume Increase

While there were few disasters of spectacular national importance during the year, Mr. Sharon said, the Red Cross through this period has rescued, fed, clothed, and given nursing and medical care to 108,885 victims of floods, fires, storms, explosions, and many other types of disasters.

Foreclosures, Wages Law Are Hit By Growers

Mr. Schmah intimated that the growers' association might ask for a hearing with Administrator Andrews in which exemption from the provisions of the wage and hour law will be sought for the processors of vegetables.

The meeting will be held in the Vocational Agricultural Building in the rear of the high school Monday night at 8:00 o'clock.

Varied fillings for baked apples might be: brown sugar, jelly, jam, maple sugar, raisins, nuts, figs, prunes, dates, coconut, minced meat or sausage.

Too Late To Clarify MAY CUTLER wants to make change. Reported in a local newspaper. Best of references. Address her LBS Herald.

WANTED: CARPENTER work, bedroom, steam, plumbing. Anything you have. 219 Magnolia Ave. HARRIS BELL, Harris, colored. Ten South E. corner of Ward work.

Have It Done The "Ward Way" Modern Machine Making Our New Machines Enable Us To Do Faster—Better Work No more calls in shack. Longer Wears—More Comfort City Shoe Shop 219 Sanford Ave.

Six To One Majority For Hospital Gains Necessary Total To Make Election Valid

Continued from Page One for the hospital 112 against it and 53 blank. The outside percentage was 562 ballots, with 11 for, 119 against, and 10 blank.

LEGAL NOTICE

IN THE COURT OF THE COUNTY OF FLORIDA, SANFORD COUNTY, FLORIDA. NOTICE OF APPLICATION FOR TAX DEED.

LEGAL NOTICE

IN THE COURT OF THE COUNTY OF FLORIDA, SANFORD COUNTY, FLORIDA. NOTICE OF APPLICATION FOR TAX DEED.

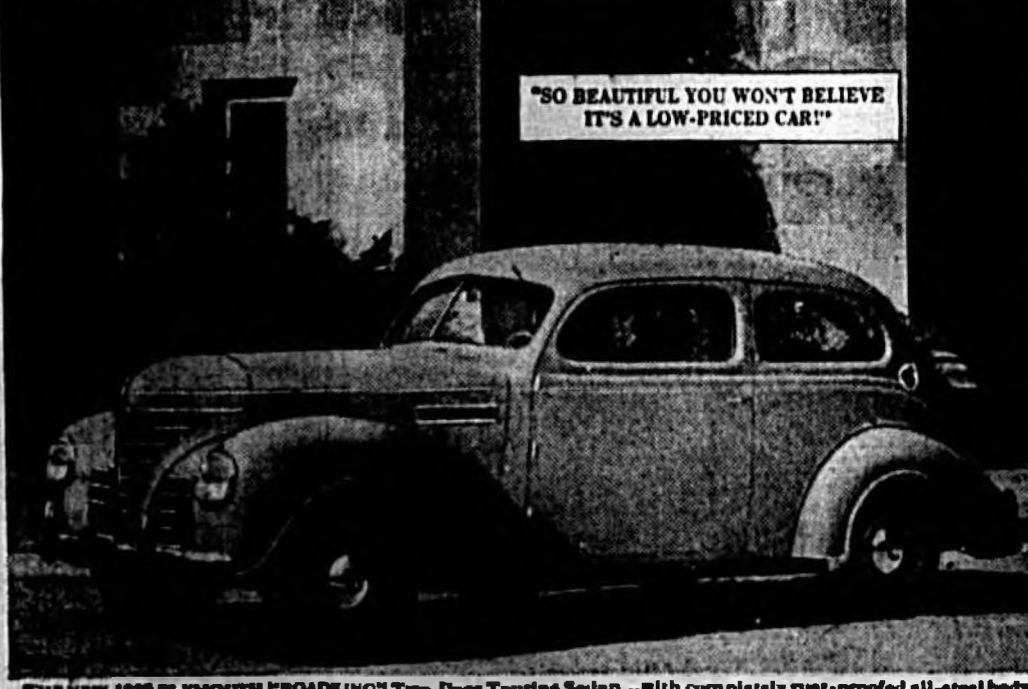
Droopy? Not now! ... thanks to Black-Draught. Often that droopy, tired feeling is caused by constipation, an everyday thief of energy.

PIGGLY - WIGGLY QUANTITY DISCOUNTS STORE CLOSED ALL DAY FRIDAY OPEN TH. 9 P. M. THURSDAY Hot Shots For Thursday Only SUGAR with order 5 lbs 19c TALL MILK 5c TOMATOES no. 2 cans 5c GREEN BEANS 2 lbs. 5c BUTTER Land of Sunshine lb. 25c COFFEE MAXWELL HOUSE lb 25c Pig PORK CHOPS lb. 19c FRYERS, fresh dressed, lb. 27c Sirloin Steak, Western lb. 21c

Plymouth for 1939 Priced Lower You Pay Less But Get More

ENJOY THIS MARVELOUS NEW SHIFTING EASE STANDARD EQUIPMENT on "De Luxe" models at no extra cost—Perfect Remote Control Gear Shifting with All-Silent Auto-Mesh Transmission. Nothing new to learn.

- Great Engineering Gives Plymouth These Extra Values 1. Greater Size—Wheelbase is 114 inches. 2. New High-Torque Engine Performance with New Economy. 3. Perfected Remote Control Shifting with New Auto-Mesh Transmission. 4. New Amola Steel Coil Springs. 5. Ingenious New "Safety Signal" Speedometer. 6. New Streamlined Safety Headlamps. 7. Time-proven, Double-Action Hydraulic Brakes. 8. All-Steel Body, Completely Rust-Proofed.



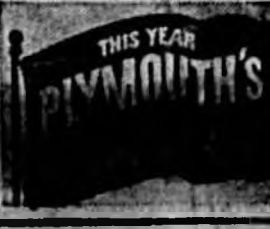
YOU'LL BE SURPRISED at All the Extra Room, Comfort and Luxury in this Big, New 1939 Plymouth

It's remarkable what a big, beautiful, value-packed automobile the new Plymouth for 1939 is—yet Plymouth's prices are down! Look at Plymouth's sweeping, modern lines... experience new High-Torque engine performance with new economy! Too, you get a new ride smooth-

deas with even greater safety. And it's remarkably easy to own... your present car will probably represent a large proportion of Plymouth's low delivered price... with the balance in surprisingly low monthly installments. PLYMOUTH DIVISION OF CHRYSLER CORPORATION, Detroit, Michigan.

EASY TO BUY "The most deliverable car" includes front and rear fenders, bumper guards, spare wheel, tire and tube, steel control bar, bright light beam with indicator on instrument panel, ash-tray in front and rear, and three safety doors and lock-trunk space (19 cubic feet). Plymouth "Black Top" inside with 100% "De Luxe" inside are available. Price includes all federal taxes. Transportation and other local taxes, if any, not included. See your Plymouth dealer for local delivery prices. THIS IS MAJOR POWER'S NATIONAL TOUR. CALLED THE NETWORK, THURSDAYS, 9 TO 11 P. M., E. S. T.

PLYMOUTH BUILDS GREAT CARS NEW "ROADKING" NEW "DELUXE"



Sanford Is The Only Central Florida City Affording Rail Highway And Water Transportation

The Sanford Herald

AN INDEPENDENT NEWSPAPER

Published Daily Except on Sundays and Public Holidays

VOLUME XXX Member Associated Press SANFORD, FLORIDA, THURSDAY, NOVEMBER 19, 1936 Established 1906 NUMBER 69

Demos Salvage Two Conceded Senate Races

Gillette Is Apparently Re-Elected In Iowa And Van Nuys Named In Indiana

GOP Wins 8 Senate, 78 House Seats Triumphs Make Certain Strong Minority Opposition

In belated returns from Tuesday's general election the Democrats today salvaged two senatorships in races where they previously had apparently been defeated.

Senator Guy M. Gillette, Democrat, apparently was re-elected in Iowa as a result of the unofficial general election calculations given by the Associated Press. Van Nuys, Democrat, had a lead of more than 2,000 votes over Republican F. Willis, Angola Republican, with only scattered precincts in counties in which Van Nuys had been running ahead.

Even so, the Republican controlled 11 new governorships, eight new senate seats and 46 of the 78 new House seats. Van Nuys, however, had begun a two-year struggle with Democrats for power.

The Democrats, characterizing many of their losses as "stolen," attributed to Roosevelt and Willkie, submitted the Peuhl bean claims of widespread anti-New Deal sentiment. But the Republicans came out of the election with 14 senators, 100 congressmen and seven governors.

These triumphs, more extensive than many Republicans had predicted, made certain strong minority opposition in both the House and Senate next session. Against the Republican triumph, there were offsets. One of these was a narrow Democratic victory in the all important state of New York, which returned Herbert H. Lehman, Democrat, to the governorship.

In addition the Democrats took California, which has had a Republican governor for many years, and replaced the Peuhl bean governor of North Dakota with one of their own party. They also placed a Democrat in the governor's chair in Maryland, the only held by a Republican.

But while the Democrats and the New Deal lost much, they had much to lose. The results left the party securely in control of both house and senate, although the Republican gains really increased the potential effectiveness of a coalition of Republicans and anti-New Deal Democrats.

The returns pushed the stock market into an energetic upward swing that produced new highs for the 1936 bull trend. And the bullish spirit was abundant, in gains for bonds and commodity prices, although the latter were moderate.

Dr. Langley Shows Slight Improvement

Dr. W. T. Langley, local physician, is slowly improving from the serious arm injury he sustained several weeks ago. Mrs. A. W. Lee reported today on her return from the Bay Pines Veterans Hospital near St. Petersburg where the physician is now receiving treatment.

BUDGE TURN PRO

NEW YORK. —(AP)— Walter L. Budge, captain of the U. S. Davis Cup team, today announced Donald Budge would turn professional and go on a tour for Promoter Jack Harris. Budge accepted Harris' offer of a flat guarantee of \$75,000.

BAPTIST ABOLISHES IN U. S.



Abolished generally, the Baptist church in the United States today is a declining organization, and has a few centers which are struggling to survive. A charter member of the International Baptist conference, a company by a diplomatic court, he left his post as guest in President Roosevelt's administration.

Miller Testifies Arsenic Is Not Harmful To Fruit

More Testimony Heard In Suit To Enjoin Enforcement Of Law

THUSVILLE, Nov. 18.—(AP)—A considerable amount of testimony was heard today in the federal court in this town in the suit to enjoin enforcement of the law against the use of arsenic in fruit. The testimony was taken at the conclusion of the second day's hearing. The hearing began before Judge E. L. Smith, in which L. E. Miller, of Sanford, testified that he had been in the employ of Nathan Miller, owner of the State Fruit and Vegetable company, since 1928. Miller testified that he had been in the employ of Nathan Miller since 1928. Miller testified that he had been in the employ of Nathan Miller since 1928.

Testimony of Dr. R. E. Miller, who testified that he had been in the employ of Nathan Miller since 1928. Miller testified that he had been in the employ of Nathan Miller since 1928. Miller testified that he had been in the employ of Nathan Miller since 1928.

DRIVER BURNS TO DEATH

OXFORD, N. C. —(AP)— A Norfolk beer truck driver who begged horrified onlookers to shoot him, burned to death 15 miles from here yesterday afternoon as he sat erect in his cab, pinned to his seat by the dashboard and steering wheel in front and his wrecked trailer behind.

Nazi Germany Resumes Drive Against Jews

Goebbels Appeals To Demonstrators To Top Reprisals For Slaying In Paris

BERLIN, Nov. 18.—(AP)—Joseph Goebbels, Nazi propaganda minister, today appealed to demonstrators to top reprisals for the slaying of a Jew in Paris.

Goebbels, in a speech before a large gathering of demonstrators in Berlin, today appealed to them to take reprisals against the Jews in Paris for the slaying of a Jew in Paris.

Goebbels, in a speech before a large gathering of demonstrators in Berlin, today appealed to them to take reprisals against the Jews in Paris for the slaying of a Jew in Paris.

Goebbels, in a speech before a large gathering of demonstrators in Berlin, today appealed to them to take reprisals against the Jews in Paris for the slaying of a Jew in Paris.

Goebbels, in a speech before a large gathering of demonstrators in Berlin, today appealed to them to take reprisals against the Jews in Paris for the slaying of a Jew in Paris.

Goebbels, in a speech before a large gathering of demonstrators in Berlin, today appealed to them to take reprisals against the Jews in Paris for the slaying of a Jew in Paris.

Goebbels, in a speech before a large gathering of demonstrators in Berlin, today appealed to them to take reprisals against the Jews in Paris for the slaying of a Jew in Paris.

Goebbels, in a speech before a large gathering of demonstrators in Berlin, today appealed to them to take reprisals against the Jews in Paris for the slaying of a Jew in Paris.

Goebbels, in a speech before a large gathering of demonstrators in Berlin, today appealed to them to take reprisals against the Jews in Paris for the slaying of a Jew in Paris.

Goebbels, in a speech before a large gathering of demonstrators in Berlin, today appealed to them to take reprisals against the Jews in Paris for the slaying of a Jew in Paris.

Goebbels, in a speech before a large gathering of demonstrators in Berlin, today appealed to them to take reprisals against the Jews in Paris for the slaying of a Jew in Paris.

Goebbels, in a speech before a large gathering of demonstrators in Berlin, today appealed to them to take reprisals against the Jews in Paris for the slaying of a Jew in Paris.

Goebbels, in a speech before a large gathering of demonstrators in Berlin, today appealed to them to take reprisals against the Jews in Paris for the slaying of a Jew in Paris.

Goebbels, in a speech before a large gathering of demonstrators in Berlin, today appealed to them to take reprisals against the Jews in Paris for the slaying of a Jew in Paris.

Goebbels, in a speech before a large gathering of demonstrators in Berlin, today appealed to them to take reprisals against the Jews in Paris for the slaying of a Jew in Paris.

Goebbels, in a speech before a large gathering of demonstrators in Berlin, today appealed to them to take reprisals against the Jews in Paris for the slaying of a Jew in Paris.

WHAT'S FRAIL AND WHY ANYWAY?



WHAT'S FRAIL AND WHY ANYWAY? A woman and a child sitting together outdoors, possibly in a garden or park.

WHAT'S FRAIL AND WHY ANYWAY? A woman and a child sitting together outdoors, possibly in a garden or park.

WHAT'S FRAIL AND WHY ANYWAY? A woman and a child sitting together outdoors, possibly in a garden or park.

WHAT'S FRAIL AND WHY ANYWAY? A woman and a child sitting together outdoors, possibly in a garden or park.

WHAT'S FRAIL AND WHY ANYWAY? A woman and a child sitting together outdoors, possibly in a garden or park.

WHAT'S FRAIL AND WHY ANYWAY? A woman and a child sitting together outdoors, possibly in a garden or park.

WHAT'S FRAIL AND WHY ANYWAY? A woman and a child sitting together outdoors, possibly in a garden or park.

WHAT'S FRAIL AND WHY ANYWAY? A woman and a child sitting together outdoors, possibly in a garden or park.

WHAT'S FRAIL AND WHY ANYWAY? A woman and a child sitting together outdoors, possibly in a garden or park.

WHAT'S FRAIL AND WHY ANYWAY? A woman and a child sitting together outdoors, possibly in a garden or park.

WHAT'S FRAIL AND WHY ANYWAY? A woman and a child sitting together outdoors, possibly in a garden or park.

WHAT'S FRAIL AND WHY ANYWAY? A woman and a child sitting together outdoors, possibly in a garden or park.

WHAT'S FRAIL AND WHY ANYWAY? A woman and a child sitting together outdoors, possibly in a garden or park.

WHAT'S FRAIL AND WHY ANYWAY? A woman and a child sitting together outdoors, possibly in a garden or park.

WHAT'S FRAIL AND WHY ANYWAY? A woman and a child sitting together outdoors, possibly in a garden or park.

Kemal Ataturk Dies Following Long Sickness

Soldier Hero's Death Comes In Wake Of Relapse From Serious Liver Ailment

Was Founder Of Modern Turkey Meeting Of National Assembly Ordered To Hold Election

ANKARA, Nov. 18.—(AP)—Kemal Ataturk, founder of modern Turkey, died today after a long illness. He was 61 years old. He was a soldier hero and a statesman. He was the founder of modern Turkey. He was a soldier hero and a statesman. He was the founder of modern Turkey.

ANKARA, Nov. 18.—(AP)—Kemal Ataturk, founder of modern Turkey, died today after a long illness. He was 61 years old. He was a soldier hero and a statesman. He was the founder of modern Turkey.

ANKARA, Nov. 18.—(AP)—Kemal Ataturk, founder of modern Turkey, died today after a long illness. He was 61 years old. He was a soldier hero and a statesman. He was the founder of modern Turkey.

ANKARA, Nov. 18.—(AP)—Kemal Ataturk, founder of modern Turkey, died today after a long illness. He was 61 years old. He was a soldier hero and a statesman. He was the founder of modern Turkey.

ANKARA, Nov. 18.—(AP)—Kemal Ataturk, founder of modern Turkey, died today after a long illness. He was 61 years old. He was a soldier hero and a statesman. He was the founder of modern Turkey.

ANKARA, Nov. 18.—(AP)—Kemal Ataturk, founder of modern Turkey, died today after a long illness. He was 61 years old. He was a soldier hero and a statesman. He was the founder of modern Turkey.

ANKARA, Nov. 18.—(AP)—Kemal Ataturk, founder of modern Turkey, died today after a long illness. He was 61 years old. He was a soldier hero and a statesman. He was the founder of modern Turkey.

ANKARA, Nov. 18.—(AP)—Kemal Ataturk, founder of modern Turkey, died today after a long illness. He was 61 years old. He was a soldier hero and a statesman. He was the founder of modern Turkey.

ANKARA, Nov. 18.—(AP)—Kemal Ataturk, founder of modern Turkey, died today after a long illness. He was 61 years old. He was a soldier hero and a statesman. He was the founder of modern Turkey.

ANKARA, Nov. 18.—(AP)—Kemal Ataturk, founder of modern Turkey, died today after a long illness. He was 61 years old. He was a soldier hero and a statesman. He was the founder of modern Turkey.

ANKARA, Nov. 18.—(AP)—Kemal Ataturk, founder of modern Turkey, died today after a long illness. He was 61 years old. He was a soldier hero and a statesman. He was the founder of modern Turkey.

ANKARA, Nov. 18.—(AP)—Kemal Ataturk, founder of modern Turkey, died today after a long illness. He was 61 years old. He was a soldier hero and a statesman. He was the founder of modern Turkey.

ANKARA, Nov. 18.—(AP)—Kemal Ataturk, founder of modern Turkey, died today after a long illness. He was 61 years old. He was a soldier hero and a statesman. He was the founder of modern Turkey.

ANKARA, Nov. 18.—(AP)—Kemal Ataturk, founder of modern Turkey, died today after a long illness. He was 61 years old. He was a soldier hero and a statesman. He was the founder of modern Turkey.

ANKARA, Nov. 18.—(AP)—Kemal Ataturk, founder of modern Turkey, died today after a long illness. He was 61 years old. He was a soldier hero and a statesman. He was the founder of modern Turkey.

All Sanford Stores To Observe Armistice Day

Dr. Park Chosen County Physician By Commissioners

Board Donates \$300 For Florida Exhibit At World Fair

Scout Review Board To Meet On Monday

Anniversary Meet Of C Of C Council To Be Held Nov. 15

City News Briefs

LaGuardia Proposed Meet For Progressives

Canvassing Board Designates Gut. Rollins Nominees

Proclamation

Mrs. Pearl Buck Is Awarded Nobel Prize

Driver Burns To Death

Local Weather

Proclamation

Mrs. Pearl Buck Is Awarded Nobel Prize

The Sanford Herald

Established in 1906
Published every afternoon except
Sunday at Sanford, Florida
211 Magnolia Avenue

Entered as second class matter
October 27, 1916, at the Post Office
at Sanford, Florida, under the
Act of Congress of March 3, 1879

HOLLAND L. BRAN
Editor

JOHN W. BRAN
Business Manager

Subscription Rates

Table with 2 columns: Rate, Price. Includes Single Copy, One Year, etc.

All ordinary notices, cards of
thanks, resolutions and notices of
funerals for the purpose of
raising funds will be charged for
at regular advertising rates.

Index Newspaper Represents
Here, the Sanford Herald in the
national field of advertising
office is maintained in the
city of the country with gen-
eral headquarters in Chicago and
New York.

The Herald is a member of The
Associated Press which is a
national organization of news-
papers. It is the only news-
paper in this section of the
state which is a member of this
organization. It is also a
member of the Florida Press
Association.

THURSDAY, NOV. 10, 1938

BIBLE VERSE FOR TODAY

WE WILL KNOW THE
SOMETIME. He is the Rock, the
work is perfect for all his ways
are judgment and without any
right or wrong. Job 24:24

BRAZILIAN MOOD

Heavenly Father, I have
known the deep blue for
a long time. I have known
the deep blue for a long
time. I have known the
deep blue for a long time.

Radicalism Reversed

Though the results of Tuesday's
elections throughout the
country are being roundly hailed as a
triumph for the Republicans and a
defeat for the Democratic party, they
are in reality more of a blow for the
New Dealers than for the Democrats.

Production Increases 5 Percent in October

WASHINGTON, Nov. 10.—The
federal reserve board today
announced that industrial
production in October increased
5 percent over the corresponding
month of last year, reaching the
highest level since October 1929.

CITY BELIEFS

WASHINGTON, Nov. 10.—The
federal reserve board today
announced that industrial
production in October increased
5 percent over the corresponding
month of last year, reaching the
highest level since October 1929.

ATTENTION Garages and Repair Men Can Give Dealer Price

A. C. Spark Plugs
We Carry A Full Line
Seminole Tire Shop
301 N. Park Ave. Phone 37

Twenty Years After

It was at 11:00 o'clock in the morning exactly twenty
years ago tomorrow morning that the Armistice was signed
and the World War came to an end. The war to end wars
had been fought and the world, presumably had been made
safe for democracy. Victory had overwhelmingly been on the
side of the Frenchies, the Tommies and the Doughboys.

But as we celebrate Armistice Day in this year of
1938, we will realize perhaps for the first time that the
victory which was so easily won our grasp twenty years
ago has been snatched from us. The world has
not been made safe for democracy and wars are already
being fought, and have yet to be fought, far bloodier and
more terrible than any the world has ever known.

What has happened during these twenty years that
has so completely changed a glorious victory into one of
humiliating defeat? Were the terms of the post-war treaties
so severe, were they so oppressive and vengeful as to
incite inevitable reaction? Or were they too easy? Should
we allies have marched straight on to Berlin and given
to Germany a bitter taste of their own medicine?

These are questions which twenty years after we
seem to know the answer. Suddenly in the Fall of 1938
we seem to have awakened from a long and peaceful slumber
to find that while we have been enjoying our repose
burglars have entered our home and are rifling our pockets
in our excitement we cannot remember where we put our
gun or whether we ever had one.

Though it seems now that Germany re-armed over
night and the tables were upset with the flash of a single
hand, in reality the bankruptcy of the Treaty of Versailles
can be said to have started even before it was signed with
the overthrow of the Kerensky government by the Russian
Bolsheviks. Certainly by the time Mussolini led his
Fascists into Rome European peace under the seas and
the fire had been started under the present boiling pot.

When the Japanese marched into Manchuria and took
possession of his rich North China province, the treaty
provision received the tacit consent, though not the public
approval, of the other Allies. What of it? Wasn't Man-
churia an insignificant outpost on the borderland of civili-
zation? Hadn't Japan been a faithful ally during the war?

But from then on the march of the dictators was fully
under way. Hitler came into power in Germany, and ap-
parently with the approval of the Allies. A word from
England then could have prevented that. With Hitler
came the steady repudiation of the Versailles Treaty, re-
armament, remilitarization of the Rhineland, Italy's con-
quest of Ethiopia, the civil war in Spain, supported if not
promoted by the Fascist powers, the war in China, the
capture of Austria, the Czechoslovakian crisis.

Before them all the victorious Allies have steadily
retreated. Why? Heaven only knows. The retreat could
have been stopped at any point with a single blast on the
bugle and without the loss of a single life. But the bugle
was not blown and now the retreat has turned into head-
long flight. Only brave men can retrench our last victory
now.

Production Increases 5 Percent in October

WASHINGTON, Nov. 10.—The
federal reserve board today
announced that industrial
production in October increased
5 percent over the corresponding
month of last year, reaching the
highest level since October 1929.

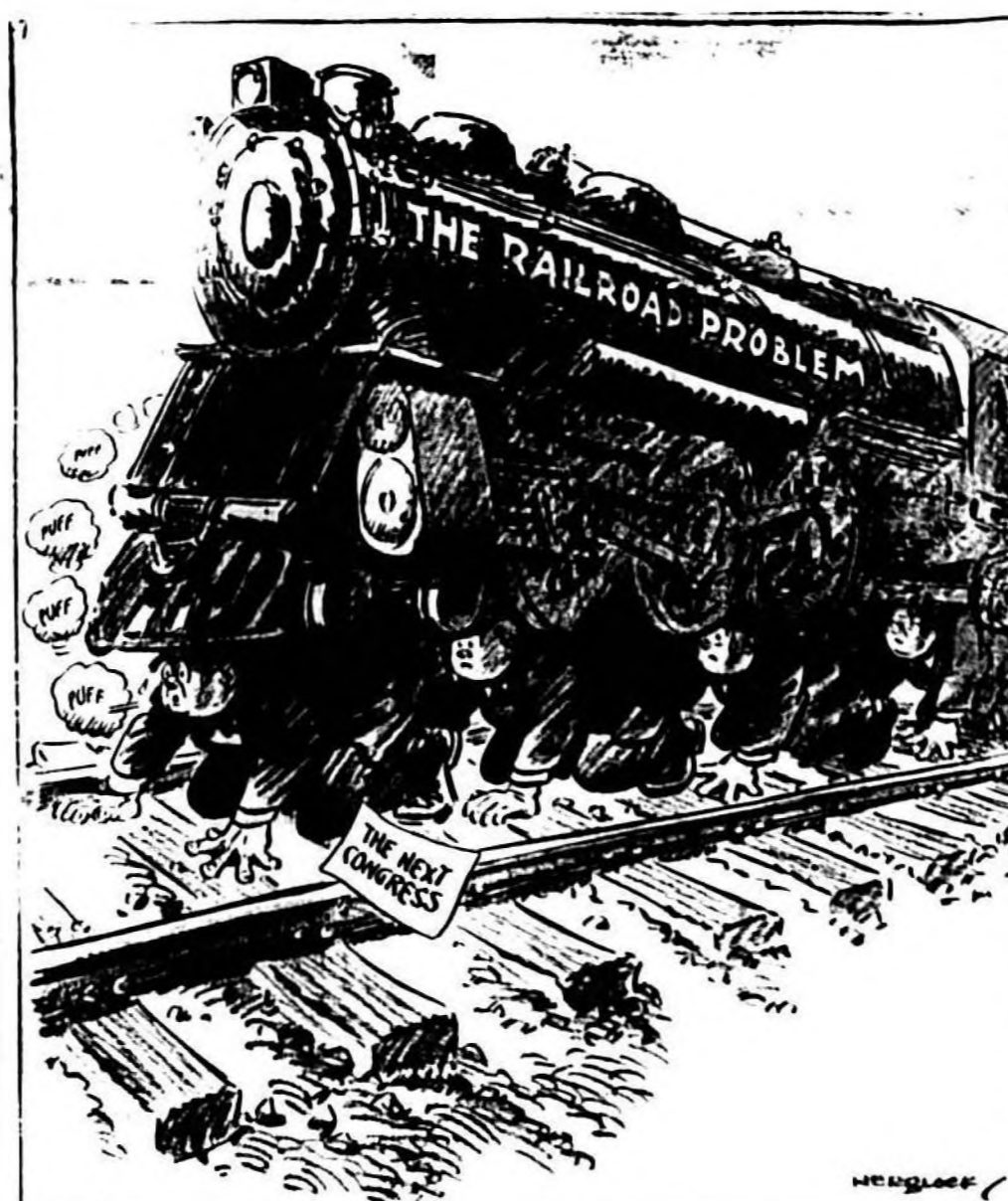
CITY BELIEFS

WASHINGTON, Nov. 10.—The
federal reserve board today
announced that industrial
production in October increased
5 percent over the corresponding
month of last year, reaching the
highest level since October 1929.

ATTENTION Garages and Repair Men Can Give Dealer Price

A. C. Spark Plugs
We Carry A Full Line
Seminole Tire Shop
301 N. Park Ave. Phone 37

RIDING BACK TO WASHINGTON IN JANUARY



Production increases 5 percent in October

Production Increases 5 Percent in October

WASHINGTON, Nov. 10.—The
federal reserve board today
announced that industrial
production in October increased
5 percent over the corresponding
month of last year, reaching the
highest level since October 1929.

CITY BELIEFS

WASHINGTON, Nov. 10.—The
federal reserve board today
announced that industrial
production in October increased
5 percent over the corresponding
month of last year, reaching the
highest level since October 1929.

ATTENTION Garages and Repair Men Can Give Dealer Price

A. C. Spark Plugs
We Carry A Full Line
Seminole Tire Shop
301 N. Park Ave. Phone 37

REFUND TAXES

WASHINGTON, Nov. 10.—The
federal government today
announced that it will
refund to taxpayers the
amount of the tax on
certain types of
merchandise.

LEADERS IN SANFORD SEMINOLE PRINTING CO. PHONE 483

ELKS Armistice Dance Friday, Nov. 11, 9:30 Elks Home 50c Ad. KNOWLTON S. ORCH.

Fine Watch Repairing Diamond Setting AND Engraving McLaulin, Jeweler 112 S. Park Ave.

SENSITIVE to Your Wishes

Southern Bell Telephone and Telegraph Co. INCORPORATED

Large advertisement for Oxydol soap. Features the text 'OXYDOL FOR ONLY 5¢ TODAY' and 'P & G WHITE NAPHTHA SOAP'. Includes a 'SPECIAL MONEY-BACK GUARANTEE' and 'HOW TO GET TODAY'S SOAP BARGAIN'. Shows images of soap boxes and a person washing clothes.

Bolita Peddler Is Fined \$750 In Tampa

TAMPA, Nov. 10.—A convicted
bolita peddler was fined \$750 in
criminal court Tuesday and
barges were filed by Solicitor
Williams against two others ac-
cused of being in the racket.

Delog Her Part

Mandy Walker, the old negro
who washed for Mrs. Frink, came
one day with a tale of woe calcu-
lated to awaken the pity in the
hardest heart.

At the same time, Solicitor Williams filed information produced 2,631,616 gallons of

Advertisement for Seminole Hotel. Features the text 'THE SEMINOLE HOTEL' and 'AIR CONDITIONED'. Includes an illustration of the hotel building.

Social And Personal Activities

MARY MAXWELL, Society Editor

Telephone 148

Social Calendar

Bridge Party Planned By Legion Auxiliary

Personals

FRIDAY
The Central Garden Club...

SAVED
The Cecilia Music Club will meet at 7:15 o'clock...

MONDAY
The Women's Council of the First Christian Church...

Circle No. One, Mrs. C. J. Bigger, chairman...

Circle No. Two, Mrs. Lettie Caldwell, chairman...

Circle No. Three, Mrs. E. J. Holly, chairman...

Circle No. Four, Mrs. H. H. Gashin, chairman...

Circle No. Five, Mrs. A. D. Smith, chairman...

Circle No. Six, Mrs. Harry Woodruff, chairman...

Circle No. Seven, Mrs. J. D. Woodruff, chairman...

Circle No. Eight, Mrs. E. D. Brownlee, chairman...

Circle No. Nine, Mrs. J. D. Woodruff, chairman...

Circle No. Ten, Mrs. J. D. Woodruff, chairman...

Circle No. Eleven, Mrs. J. D. Woodruff, chairman...

Circle No. Twelve, Mrs. J. D. Woodruff, chairman...

Circle No. Thirteen, Mrs. J. D. Woodruff, chairman...

Circle No. Fourteen, Mrs. J. D. Woodruff, chairman...

Circle No. Fifteen, Mrs. J. D. Woodruff, chairman...

Circle No. Sixteen, Mrs. J. D. Woodruff, chairman...

Circle No. Seventeen, Mrs. J. D. Woodruff, chairman...

Circle No. Eighteen, Mrs. J. D. Woodruff, chairman...

Circle No. Nineteen, Mrs. J. D. Woodruff, chairman...

Circle No. Twenty, Mrs. J. D. Woodruff, chairman...

Plans for the American Legion Auxiliary's subscription party...

The party will be held at the home of Mrs. H. H. Gashin...

The meeting was presided over by Mrs. J. D. Woodruff...

Mrs. Ruff appointed the committee...

The party will be held at the home of Mrs. H. H. Gashin...

The party will be held at the home of Mrs. H. H. Gashin...

The party will be held at the home of Mrs. H. H. Gashin...

The party will be held at the home of Mrs. H. H. Gashin...

The party will be held at the home of Mrs. H. H. Gashin...

The party will be held at the home of Mrs. H. H. Gashin...

The party will be held at the home of Mrs. H. H. Gashin...

The party will be held at the home of Mrs. H. H. Gashin...

The party will be held at the home of Mrs. H. H. Gashin...

The party will be held at the home of Mrs. H. H. Gashin...

The party will be held at the home of Mrs. H. H. Gashin...

The party will be held at the home of Mrs. H. H. Gashin...

The party will be held at the home of Mrs. H. H. Gashin...

The party will be held at the home of Mrs. H. H. Gashin...

The party will be held at the home of Mrs. H. H. Gashin...

The party will be held at the home of Mrs. H. H. Gashin...

The party will be held at the home of Mrs. H. H. Gashin...

The party will be held at the home of Mrs. H. H. Gashin...

The party will be held at the home of Mrs. H. H. Gashin...

Mrs. Jean Caswell is the house guest of Mr. and Mrs. L. O. Lancy...

Miss Lettie Caldwell has received a letter from a friend...

Mr. R. G. Hester is a guest of Mr. and Mrs. L. O. Lancy...

Mr. and Mrs. J. D. Woodruff are the house guests of Mr. and Mrs. L. O. Lancy...

Mr. and Mrs. J. D. Woodruff are the house guests of Mr. and Mrs. L. O. Lancy...

Mr. and Mrs. J. D. Woodruff are the house guests of Mr. and Mrs. L. O. Lancy...

Mr. and Mrs. J. D. Woodruff are the house guests of Mr. and Mrs. L. O. Lancy...

Mr. and Mrs. J. D. Woodruff are the house guests of Mr. and Mrs. L. O. Lancy...

Mr. and Mrs. J. D. Woodruff are the house guests of Mr. and Mrs. L. O. Lancy...

Mr. and Mrs. J. D. Woodruff are the house guests of Mr. and Mrs. L. O. Lancy...

Mr. and Mrs. J. D. Woodruff are the house guests of Mr. and Mrs. L. O. Lancy...

Mr. and Mrs. J. D. Woodruff are the house guests of Mr. and Mrs. L. O. Lancy...

Mr. and Mrs. J. D. Woodruff are the house guests of Mr. and Mrs. L. O. Lancy...

Mr. and Mrs. J. D. Woodruff are the house guests of Mr. and Mrs. L. O. Lancy...

Mr. and Mrs. J. D. Woodruff are the house guests of Mr. and Mrs. L. O. Lancy...

Mr. and Mrs. J. D. Woodruff are the house guests of Mr. and Mrs. L. O. Lancy...

Mr. and Mrs. J. D. Woodruff are the house guests of Mr. and Mrs. L. O. Lancy...

Mr. and Mrs. J. D. Woodruff are the house guests of Mr. and Mrs. L. O. Lancy...

Mr. and Mrs. J. D. Woodruff are the house guests of Mr. and Mrs. L. O. Lancy...

Mr. and Mrs. J. D. Woodruff are the house guests of Mr. and Mrs. L. O. Lancy...

Mr. and Mrs. J. D. Woodruff are the house guests of Mr. and Mrs. L. O. Lancy...

Mr. and Mrs. J. D. Woodruff are the house guests of Mr. and Mrs. L. O. Lancy...

Mr. and Mrs. J. D. Woodruff are the house guests of Mr. and Mrs. L. O. Lancy...

Session Is Held By Methodist Board

The Methodist Board held a session at the home of Mr. and Mrs. L. O. Lancy...

The session was presided over by Mr. J. D. Woodruff...

The session was presided over by Mr. J. D. Woodruff...

The session was presided over by Mr. J. D. Woodruff...

The session was presided over by Mr. J. D. Woodruff...

The session was presided over by Mr. J. D. Woodruff...

The session was presided over by Mr. J. D. Woodruff...

The session was presided over by Mr. J. D. Woodruff...

The session was presided over by Mr. J. D. Woodruff...

The session was presided over by Mr. J. D. Woodruff...

The session was presided over by Mr. J. D. Woodruff...

The session was presided over by Mr. J. D. Woodruff...

The session was presided over by Mr. J. D. Woodruff...

The session was presided over by Mr. J. D. Woodruff...

The session was presided over by Mr. J. D. Woodruff...

The session was presided over by Mr. J. D. Woodruff...

The session was presided over by Mr. J. D. Woodruff...

The session was presided over by Mr. J. D. Woodruff...

The session was presided over by Mr. J. D. Woodruff...

The session was presided over by Mr. J. D. Woodruff...

The session was presided over by Mr. J. D. Woodruff...

The session was presided over by Mr. J. D. Woodruff...



Powell, De Havilland Star In Film At Ritz

Dr. Park Chosen County Physician By Commissioners

The Board of Commissioners has chosen Dr. J. D. Park as the county physician...

The Board of Commissioners has chosen Dr. J. D. Park as the county physician...

The Board of Commissioners has chosen Dr. J. D. Park as the county physician...

The Board of Commissioners has chosen Dr. J. D. Park as the county physician...

The Board of Commissioners has chosen Dr. J. D. Park as the county physician...

The Board of Commissioners has chosen Dr. J. D. Park as the county physician...

The Board of Commissioners has chosen Dr. J. D. Park as the county physician...

The Board of Commissioners has chosen Dr. J. D. Park as the county physician...

The Board of Commissioners has chosen Dr. J. D. Park as the county physician...

The Board of Commissioners has chosen Dr. J. D. Park as the county physician...

The Board of Commissioners has chosen Dr. J. D. Park as the county physician...

The Board of Commissioners has chosen Dr. J. D. Park as the county physician...

The Board of Commissioners has chosen Dr. J. D. Park as the county physician...

The Board of Commissioners has chosen Dr. J. D. Park as the county physician...

The Board of Commissioners has chosen Dr. J. D. Park as the county physician...

The Board of Commissioners has chosen Dr. J. D. Park as the county physician...

The Board of Commissioners has chosen Dr. J. D. Park as the county physician...

Kamal Maturk Dies Following Long Sickness

Kamal Maturk, a well-known local resident, died after a long illness...

Kamal Maturk, a well-known local resident, died after a long illness...

Kamal Maturk, a well-known local resident, died after a long illness...

Kamal Maturk, a well-known local resident, died after a long illness...

Kamal Maturk, a well-known local resident, died after a long illness...

Kamal Maturk, a well-known local resident, died after a long illness...

Kamal Maturk, a well-known local resident, died after a long illness...

Kamal Maturk, a well-known local resident, died after a long illness...

Kamal Maturk, a well-known local resident, died after a long illness...

Kamal Maturk, a well-known local resident, died after a long illness...

Kamal Maturk, a well-known local resident, died after a long illness...

Kamal Maturk, a well-known local resident, died after a long illness...

Kamal Maturk, a well-known local resident, died after a long illness...

Kamal Maturk, a well-known local resident, died after a long illness...

Kamal Maturk, a well-known local resident, died after a long illness...

Kamal Maturk, a well-known local resident, died after a long illness...

Kamal Maturk, a well-known local resident, died after a long illness...

Shower Is Given In Honor Of Miss Gillon

A shower was given in honor of Miss Virginia Gillon...

A shower was given in honor of Miss Virginia Gillon...

A shower was given in honor of Miss Virginia Gillon...

A shower was given in honor of Miss Virginia Gillon...

A shower was given in honor of Miss Virginia Gillon...

A shower was given in honor of Miss Virginia Gillon...

A shower was given in honor of Miss Virginia Gillon...

A shower was given in honor of Miss Virginia Gillon...

A shower was given in honor of Miss Virginia Gillon...

A shower was given in honor of Miss Virginia Gillon...

A shower was given in honor of Miss Virginia Gillon...

A shower was given in honor of Miss Virginia Gillon...

A shower was given in honor of Miss Virginia Gillon...

A shower was given in honor of Miss Virginia Gillon...

RITZ Balcony 10-25 Lower Floor 10-35 Tonight... THE MAGIC EYE... HARD TO GET... RENEGADE RANGER

GAS IS CHEAPER IN SANFORD... SANFORD GAS CO. 108 S. Park Ave. Phone 49

TURKEY DINNER AND BAZAAR... Woman's Council... Christian Church SATURDAY, NOV. 19, 1938 5:00 to 8:30 P. M. EPISCOPAL PARISH HOUSE Price 75c

AN OPPORTUNITY TO READ THE BEST NEW BOOKS... THE BOOK NOOK 705 Palmetto Avenue Sanford

ELGIN WATCHES... Give An ELGIN This Xmas!

DUVAL JEWELRY CO. OF ORLANDO... 118 S. Orange Ave. G. C. Stone, Pres. Orlando, Fla.

20th ANNIVERSARY ARMISTICE DAY



COST OF U. S. WARS—Revolutionary War \$175,000,000
 ... War of 1812 \$165,840,000 ... Mexican War \$234,390,000
 ... Civil War (Union) \$11,412,220,000 ... Spanish American War \$3,065,926,000 ... World War \$33,276,615,126
 ... Or all in all the staggering total of \$48,329,991,126
 ... Think of what this sum would accomplish if spent for health and education in America instead of devastating war.

THE FIRST ARMISTICE DAY TO BE OBSERVED AS A NATIONAL LEGAL HOLIDAY



Twenty years ago the joyful news of the Armistice rang around the World. To most of us the time has passed quickly ... It seems only yesterday that we proudly watched our returning heroes marching home. The cheers and tears of joy are still vividly with us. But what long, lonesome years they have been to those mourning Gold Star Mothers... What tortuous years have they been to those shell-shocked, blinded, maimed and crippled martyrs, many of whom are merely marking time to the relief that will be theirs when taps are finally sounded.

What Price Glory, if they be denied on this, the Twentieth Armistice Anniversary, a dedication of Remembrance.

SEMINOLE COUNTY HONOR ROLL

Lest we forget their part in the Great War which ended twenty years ago, the following names are published:

FRANK A. CAMPBELL
 ARTHUR D. LOSSING
 ARCHIE B. LILES
 CARL MAHM
 JOSEPH S. LAING
 HARRY PHILLIPS



EDWIN J. ROBINSON
 M. W. LOVELL, JR.
 J. OSCAR WHITE
 — COLORED —
 GEO. W. CALHOUN
 HANDY JENKINS



TWENTY YEARS OF PEACE for America ... may we have many more twenty-year periods of Peace. There is no tribute that can recompense our lost ones for what they have contributed. But we can manifest to them today that they are not forgotten. They died for Peace not War. We must keep the faith. We must dedicate to them our everlasting thought and energy to insure for their posterity the goal they sought and the sacrifice they made TWENTY years ago.

LEE BROS. "Plumbers"	COMPLIMENTS Frank L. Miller
COMPLIMENTS COLCLOUGH REALTY CO. Real Estate and Insurance	COMPLIMENTS OF THE SANFORD ATLANTIC NATIONAL -BANK-
COMPLIMENTS SPENCER HARDEN DAIRY -	COMPLIMENTS EDDIE'S RESTAURANT
COMPLIMENTS LODGE and - SONS -	STRICKLAND MOTORS, INC. FORD LINCOLN ZEPHYR
COMPLIMENTS SANFORD PACKAGE HOUSE Phone 511	COMPLIMENTS McKee Auto Supply Goodrich Tires and Batteries
COMPLIMENTS GREEN VALLEY DAIRY "Rich Milk"	McLaulin's Jeweler 112 S. Park Established 50 Years Ago
COMPLIMENTS THE SMOKE HOUSE	COMPLIMENTS SEMINOLE CREAMERY - CO. -
Jones & Stephens Registered Druggists In The Heart Of Sanford, Florida 254 E. 1st Street Phone 878	COMPLIMENTS St. Johns River Line

This Armistice Day Page

SPONSORED BY
 Campbell Lossing Post No. 53.
AMERICAN LEGION
 The Following Business Firms and Citizens
 PAY HONOR to our DEPARTED COMRADES

Harry S. Woodruff
 A. W. Epps
 L. D. Brown
 H. W. Rucker
 H. H. McCaslin
 Monk Bennett
 E. C. Harper
 Security Lumber
 & Supply Yard
 COMPLIMENTS
 SANFORD BUICK
 COMPANY
 Buick and Pontiacs
 Mack-Trucks & Buses
 COMPLIMENTS
 Gulf Oil Products
 Seminole Garage
 "CAMPBELLS"
 Security Food and Seed Store
 O. P. HERNDON
 Clerk Circuit Court
 JNO. D. JINKINS
 Tax Collector
 T. W. LAWTON
 Supt. Public Instruction
 Roberts' Grocery
 Phone 39
 Seminole Dry
 Cleaners
 HENRY A. RUSSELL SEED
 CO.
 "Burpee's Seeds Grow"

COMPLIMENTS
 SEMINOLE
 COUNTY
 MEDICAL
 SOCIETY
 W. H. Reitz
 Thorpe Furn. Co.
 F. P. Rines
 Sanford Avenue & Ninth Street
 Sanford, Fla.
 COMPLIMENTS
 Legion Supporter
 Seminole Chapter
 Future Farmers of
 America
 Joel S. Field
 ROY HOLLER
 Agent
 New York Life Ins.
 McReynolds Drug
 Laney's Drug Store
 Homer Little
 United Lumber Co.
 Your Friendly Dealer
 Howard C. Long
 Plumbing
 COMPLIMENTS
 OF
 K. G. Soderblom
 and Family
 COMPLIMENTS
 STOKES' FISH
 MARKET
 417 Sanford Ave.

George Weinstein
 Scott-Carraway, Inc.
 H. H. Coleman
 Sam Fleischer
 P. A. Mero
 Compliments Of
 Legion Supporter
 Compliments Of
 C. I. & M.
 Dingfelder
 H. B. POPE CO., INC.
 Welch Tire Shop
 Scott Service Station
 HILL LUMBER &
 Supply Yard Inc.
 SANFORD, FLORIDA
 English Service
 Station
 Howdy Folks—Glad to be
 back.
 JIMMY ADAMS.
 Sanford

 Bottling Works
 NEHI
 ROYAL CROWN
 COLA
 Wagoner Furn. Co.

Roumillat &
 Anderson
 The Prescription Shop
 Sanford, Florida
 B. L. PERKINS
 Correct Men's Wear
 117 E. First St.
 COMPLIMENTS
 OF
 COLEMAN'S
 Office Equipment
 Company
 Everything For The Office
 Phone 104
 COMPLIMENTS
 WERT
 THE JEWELER
 202 E. First St.
 COMPLIMENTS
 McCRORY'S
 5c and 10c Store
 SEMINOLE
 TIRE
 SHOP
 "Firestone Tires"

WIGHT BROS. CO.
 CHRYSLER
 PLYMOUTH
 WE SOLICIT
 YOUR PATRONAGE
 High Grade Shoes
 For The Family
 IVEY'S
 COMPLIMENTS
 STANLEY
 - ROGERS
 HARDWARE CO.
 COMPLIMENTS
 OF
 W. W. Auto Parts
 Forrest Gatchel's
 Cash Grocery
 400 Sanford Ave.
 Home Owned
 Home Operated
 SEMINOLE
 COUNTY
 LAUNDRY
 Phone 475
 REEL and SONS
 DODGE
 PLYMOUTH
 COMPLIMENTS
 The Yowell Co.

Farley Says U. S. Will Continue To Vote Democratic

NEW YORK, Nov. 10.—James A. Farley, Democratic national chairman, yesterday declared the country would "continue to vote Democratic for many years to come."

Losses in a number of states, Farley said, were due to local—not national—consideration.

"Senator Vandenberg is the Republican to defeat for the presidency in 1940," Farley said in answer to a question as to whether he believed the Republican party had elected presidential timber in several states. At the same time he refused to even hint whom the Democrats might name.

"The election, as anticipated," said Farley, "showed a falling off from the unprecedented pluralities of 1936. Our party, however, won substantial majorities in the senate and house, and I think the outcome justifies the statement that the country as a whole is still strongly behind the humanitarian policies of President Roosevelt."

"We lost several Democratic governors—to be frank, a few more than we anticipated. On the other hand, we elected Democratic governors in Maryland and California, unseating a Republican governor in each instance."

"There is no doubt that local considerations, rather than national, were the deciding factors in a number of states."

"The splendid victory of the entire Democratic ticket in the key state of New York was particularly gratifying. The country will continue to vote Democratic for many years to come."

PALO ALTO, Calif., Nov. 10.—Herbert Hoover yesterday said the Republican party now is in a position to "restore faith in America."

The former president issued the following statement on yesterday's election:

"The returns indicate that a majority of the American people voted for governors, senators or congressmen, either Republican or Democrat, who are opposed to the new deal."

"This protest should enable the beginning of the end of this waste of public money, their policies of coercion, political corruption and undermining of representative government."

"The reinvigorated Republican party is now in position to join effectively with the anti-new deal democracy to check these policies in the congress and thereby contribute to restore employment and agriculture, to re-establish confidence in business and above all, to restore faith in America."

North Carolina's 1938 turkey crop was estimated to be 10 percent less than 1937 while that of Virginia, a sister state, was calculated to be 12 percent greater.



THE DIONNE QUINTUPLETS one by one mistook an anesthetic mask for a play thing yesterday and without a murmur dozed off to sleep and had their tonsils and adenoids snipped out. The operations were performed by Dr. D. E. S. Wilbert, Dr. Allan DeFoe, physician to the quintuplets since their birth said they came through in fine condition. He remained in the background during the 1 1/2 hours required lest the quintuplets associate him with the occasion and come to fear him.

Seminole County Court Records

Warranty Deeds Overstreet Land Co. to W. O. Moon, et ux Home Owners Loan Corp. to F. Long

Tax Deeds issued to the following: Chulonta Co. NE1 of SW1 & NW1 of SE1 section 11-21-32 80 acres. NE4 of NE4 & SW1 of NW4 section 13-21-31, 200 acres. 4 acres square in SW corner of NE4 section 9-21-32 4 acres. NE1, less 4 acres sit in NW cor., section 9-21-32 150 acres.

Moremen, A. W. 33 ft. of E 1/2 of W 1/2 of NW1 section 14-21-30—2 acres.

Martin, J. Wm. & Pearl G. Lots 4 & 6 & W 10 ft. lot 5, Alexandria, Oviedo.

Redding, Roy A. Lot 6, block C, Markham Park Heights.

Tax Service Bureau, Inc. Lots 1, 2, 3 & 4 Robert L. Bell's add., to Altamonte.

Long, S. F. S 25 ft. of SE1 of SE4 section 11-21-32—20 acres. NE4 of SE1 section 14-21-32—10 acres. NE4 of SE1 section 15-21-32—10 acres. N 1/2 of NW1 section 11-21-32 80 acres. W 1/2 of SE1 of SW1 section 11-21-32—20 acres. NW1 of NW4 section 23-21-32—10 acres.

Real Estate Mortgages Moon, W. O., et ux to Overstreet Land Co. Eckerson Fruit Cannery, Inc. to Reconstruction Finance Corp.

Election Proclaimed FDR Blow By Germans To Make Florida Tour

WASHINGTON, Nov. 10.—(AP) Capito, such as "against new deal" and "overseer for Roosevelt" headlined reports of United States sections in German morning papers today.

There was only moderate interest in the elections. The Berliner Tageblatt, only paper commenting on the election said "A cold was swayed the Ashie, Lonnie U. et ux to United States of America."

Assignment of Mortgages Sanford Grocers Credit Corp. to Sanford All Natl. Bank. McNear, Rev. First Natl. Bank To F. M. Ford & James V. Doyle. Doyle, James V. et ux To F. M. Ford.

SANFORD FISH & Gro. Co.

217-19 Sanford Ave. Phone 802

- SHRIMP lb. 20c
STEAK lb. 32c
Baltimore Oysters qt. 19c
STANDARD SELECT COUNTS qt. 70c

We will be open Fri. Nov. 11 7-11 A. M. 4-7 P. M.

Amazing! A PORTABLE TYPEWRITER THAT WEIGHS 8 LBS. 15 OZ.

THE BRAND NEW CORONA Lephyr

\$26.75—seasonal low price for a full-fledged CORONA portable. Has standard keyboard, 44 characters—"Swinging Shift"—packs away in a brief case.

HAYNES OFFICE MACHINE CO. 100 W. First St. Phone 11

President Is Invited To Make Florida Tour

WASHINGTON, Nov. 10.—(AP) President Roosevelt will be invited to make a tour of Florida during his next trip to the South.

The invitation was made by a group of official business men of the Florida and South Florida sections of the Florida Chamber of Commerce.

The invitation was made by a group of official business men of the Florida and South Florida sections of the Florida Chamber of Commerce.

RUPPERT'S IS RIGHT!



Growers To Discuss Tentative Agreement

BARTON, Nov. 10.—(AP) H. Kramer, chairman of the Growers' Marketing Board, said today that a tentative agreement had been reached between the growers and the packers.

The agreement, which would be in effect in Palm County, he said, would be in effect in Palm County, he said.

The agreement, which would be in effect in Palm County, he said, would be in effect in Palm County, he said.

The agreement, which would be in effect in Palm County, he said, would be in effect in Palm County, he said.

The agreement, which would be in effect in Palm County, he said, would be in effect in Palm County, he said.

The agreement, which would be in effect in Palm County, he said, would be in effect in Palm County, he said.

The agreement, which would be in effect in Palm County, he said, would be in effect in Palm County, he said.

The agreement, which would be in effect in Palm County, he said, would be in effect in Palm County, he said.

The agreement, which would be in effect in Palm County, he said, would be in effect in Palm County, he said.

The agreement, which would be in effect in Palm County, he said, would be in effect in Palm County, he said.

The agreement, which would be in effect in Palm County, he said, would be in effect in Palm County, he said.

The agreement, which would be in effect in Palm County, he said, would be in effect in Palm County, he said.

The agreement, which would be in effect in Palm County, he said, would be in effect in Palm County, he said.

The agreement, which would be in effect in Palm County, he said, would be in effect in Palm County, he said.

The agreement, which would be in effect in Palm County, he said, would be in effect in Palm County, he said.

The agreement, which would be in effect in Palm County, he said, would be in effect in Palm County, he said.

The agreement, which would be in effect in Palm County, he said, would be in effect in Palm County, he said.

The agreement, which would be in effect in Palm County, he said, would be in effect in Palm County, he said.

The agreement, which would be in effect in Palm County, he said, would be in effect in Palm County, he said.

The agreement, which would be in effect in Palm County, he said, would be in effect in Palm County, he said.

9 Famous NAMES!

97% Caffeine Removed Kaffee Hag 39c Now You Can Sleep Sanka lb 39c

The Brand You Prefer Is On Sale!

New Day lb 19c Maxwell House lb 25c Chase-Sanborn 23 1/2c Del Monte lb 25c Beechnut lb 32c

Mellowed for your table—Ground to your order VELVO Coffee lb 13 1/2c

Sauce 303 can 5 1/2c Flour 20 lbs 49c Peaches no 2 1/2 can 10 1/2c Flour 5 lbs 23c

SUGAR 5 Lbs. 21c TOMATOES 5c TALL DANDY LINE MILK 5c

Tons of 'Taters—Hundreds of Piggies! PIG PORK & GA. YAMS

Mighty Good Eating! Red Pork Bacon Yams and Corned Pig Pork reach the peak of perfection in the deen South.

HAMS 21c Chops 21c Sides 15c Backbone 25c Sausage 19c

Shoulder 17c BACON lb. 39c Picnic HAMS lb. 21c

ARMOUR STAR BEEF Pot Roast lb 19c Round Steak lb 33c Chuck Roast lb 23c

STEAKS Chuck Roast 15c Plate Stew 11c Pot Roast 12 1/2c Hamburger 12 1/2c

ROAST OIL SAUSAGE lb. 19c HENS lb. 24c Pure Lard lb 12 1/2c Pork Brains

Potatoes 10 lbs 17c Apples 15c GRAPES 15c LETTUCE 7 1/2c CELERY 7 1/2c CAULIFLOWER 7 1/2c ONIONS 10c

NEW GREEN Cabbage lb. 2 1/2c PEPPERS, each 1c

ORANGES 15c BEANS 3 lbs. 10c

CANAMAY 18c

OXYDOL 23c

FREE

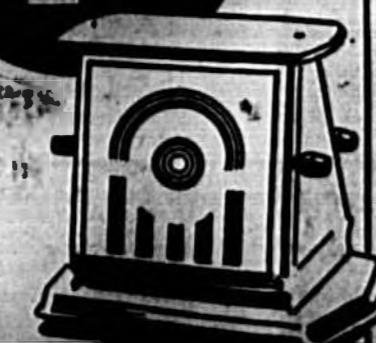
FREE

The Toast OF THE NATION

Toasts should be just that right shade of brown which means it has roasted evenly and is now ready for the crowning touch of golden butter, melting lusciously into the bronzed goodness of the toast.

It takes the right kind of toaster to make the kind of toast you want. The toaster shown is excellent for your needs. Inexpensive though it is, it lends a definite note of charm to the breakfast table. It is finished in brilliant chromium with walnut woodwork and is designed for eye appeal as well as for utility.

REGULAR PRICE \$3.70 NOW \$2.95



TAKE ADVANTAGE OF THESE SAVINGS!

While you are buying your new toaster Regularly \$3.70 Now \$2.95

Take a look at the waffle iron Regularly \$8.95 Now \$4.85

And The 7 cup percolator Regularly \$8.95 Now \$4.85

If you buy all three at one time, you make an additional SAVING of 60c for the matched set which adds for \$12.25. Easy terms.

SEND TO YOUR CHRISTMAS LIST

New England's Doughnuts Get Up In The World

By MRS. ALEXANDER GEORGE
Boston, Mass. (Special Herald Staff Writer)

But the doughnut has been too good a thing to remain in New England. It has gone to the world. It has been taken to the ends of the earth. It has been eaten in every part of the world. It is now a world-wide favorite. It is eaten in every part of the world. It is eaten in every part of the world.

FOR SEALS PREDICTION

HIDE PARK, N. Y. (Special Herald Staff Writer) - A prediction of the weather for Tuesday, Nov. 11, is as follows: Partly cloudy with a chance of rain. High 45, low 35.

JAPANESE THREAT SEEN

LONDON, Nov. 10. (Special Herald Staff Writer) - A Japanese official here today said that the Japanese government was studying the possibility of sending a large expedition to the Philippines.

The doughnut is a very popular food. It is eaten in every part of the world. It is eaten in every part of the world. It is eaten in every part of the world. It is eaten in every part of the world.

It is a very popular food. It is eaten in every part of the world. It is eaten in every part of the world. It is eaten in every part of the world. It is eaten in every part of the world.

A & P FOOD STORES

SPECIAL LOW PRICE!
EIGHT O'CLOCK COFFEE
FRESHLY ROASTED! FRESHLY GROUND!
2 1 Lb. Pkgs. **27c**

ANN PAGE SALAD DRESSING
8 Oz. Pint Quart
10c 17c 27c

ANN PAGE SANDWICH SPREAD
8 Oz. Pint
10c 17c

A & P BAKERS SOFT-TWIST BREAD
Fresh Plain or Sliced
15 Oz. 8" Pullman **10c**

Fresh Pure Creamery BUTTER
Pound **30c**

A & P GOLDEN-BANTAM CREAM STYLE CORN
No. 2 CAN **10c**

IONA BRAND BEANS
With Pork and Tomato Sauce
6 1-lb. cans **25c**

WHITE HOUSE EVAPORATED MILK
3 tall cans **17c**

WINNER PEARL GRITS
5 Pounds **10c**

Will Be Closed All Day Friday, Nov. 11

CORN MEAL Unbolted 5 lbs. **10c**
RICE Fancy Blue Rose 5 lbs. **17c**
BLACK-EYE PEAS Dried lb. **5c**
BABY-LIMA BEANS Dried lb. **6c**
SAUERKRAUT 3 No. 2 1/2 cans **25c**
COCO Iona Brand 1 lb. **10c**; 2 lbs. **17c**
PEACHES Iona No. 2 1/2 cans **2 for 25c**

BANANAS FIRM RIPE 4 lbs. **15c**
YORK APPLES 7 lbs. **15c**
CABBAGE N. Y. GREEN lb. **2c**
YELLOW SQUASH lb. **5c**
RUTABAGAS CANADIAN lb. **2c**
YELLOW ONIONS 3 lbs. **10c**

HEAD CRISTAL PINE GRANULATED SUGAR Factory Packed Bags **23c**

GOOD SHIPMENT, BEER COMPOUND lb **10c**

COLD STREAM BROWN SALMON Tall Can **10c**

PILLBURY'S BEST FLOUR 5 lbs **22c** 12 lbs **47c**

WILLIAMS BROTHERS SLICED PINEAPPLE No. 2 1/2 Cans **19c**

POT ROAST BEEF lb. **19c**
ALL MEAT STEW lb. **22c**
Round & Sirloin STEAKS lb. **25c**
PORK SHOULDERS lb. **19c**
PORK HAMS lb. **25c**
STANDARD BALTIMORE OYSTERS qt. **50c**
BACON SQUARES Sliced lb. **21c**

A & P PEARS No. 2 1/2 cans **17c**
OATMEAL Sunnyfield 20 oz. pkg. **8c**
CORN FLAKES Sunnyfield 8 oz. pkg. **5c**

IONA BRAND MACARONI & SPAGHETTI 3-7 oz. pkgs. **12c**
TOMATOES Iona Brand 3 No. 2 cans **18c**
FRENCH'S MUSTARD **10c**
FRENCH'S WORCESTERSHIRE SAUCE **15c**
FRENCH BIRD SEED **15c**

ABUNDANT PRODUCTION DRIED FRUIT SALE
Prunes 70-80 size lb. **5c**
Peaches 2 lbs. **25c**
Apples 2 lbs. **25c**

A & P FOOD STORES
Owned and Operated by The Great Atlantic & Pacific Tea Co. Sanford, Florida

Place Your Order Now For A Nice Fat Plump Peanut Fed Fresh Killed or Live Florida Turkey. Quality Guaranteed. Price Right.

RILEY'S

U. S. NO. 1 LONG ISLAND POTATOES 10 lbs. **15c**
GOLDEN RIPE BANANAS 10 lbs. **25c**

SATURDAY HIGHEST TO LIMIT QUANTITY NOV. 12

FANCY YORK OR STAMMAN WINESAP Apples 5 lbs. **17c**

HOME GROWN 4 LBS. NEW CROP LOCAL 10 LBS.
Stringless Beans **10c** Sweet Potatoes **15c**

TENDER YELLOW 4 LBS. LARGE JUICY RIPE
Squash 3 lbs. **14c** Oranges 2 doz. **15c**

HOME GROWN 4 LBS. LARGE PAPER SHELL 2 LBS.
Green Cabbage **10c** Georgia Pecans **29c**

Fresh Local Carrots bunch **7c**
Fancy Snowball Cauliflower lb.
Large Iceberg Lettuce each

FRESH CUT OFF 4 LBS. FRESH CLIPPED LOCAL
Carrots 3 lbs. **14c** SPINACH 3 lbs **14c**
Turnips

YELLOW COOKING 5 FOR
ONIONS 3 lbs. **10c** CUCUMBERS **10c**

"FALL ROUND UP OF GROCERY PRICES"

AMAY SOAP 5c SUGAR 5 lbs. WITH 10c TEA **16c** REG. 5 lbs. 21c OXYDOL Sm. 7 1/2c Lg. 19c

NO. 2 PHILLIPS NO. 1 LIBBY'S NO. 2 DIAMOND SLICED
PORK and BEANS 2 for **15c** CORNED BEEF **15c** PINEAPPLE **10c**

DREPT Sm. 10c Lg. 25c W. G. MEAL 4 lbs. **6c** NO. 2 CAN TRIPE **19c**

NO. 2 DEL MONTE NAVY, NORTHERN OR B. E.
SPRY 3 lbs. **49c** 1 lb. **21c** PEACHES 2 for **25c** PEAS or BEANS 3 lbs. **14c**

LARGE 2 FOR 25c RILEY'S SPECIAL COFFEE 2 lbs. **29c** PILLBURY FARINA **10c**

Large Box Matches 2 for 5c Shamrock 5 Lbs. **15c** CHURNGOLD OLEO lb. Or 10 Lbs. **27c** DIXIE OLEO **15c**

White Crosse Toilet Tissue 1 1/2 Lb. Container Salt FLOUR 21 Lbs. **53c**

BRAND OR SANIFLUSH LARGE 21c DANDY-LINE-MILK SM. 3 FOR 10c TALL CAN..... **5c** POST 2 FOR Toasties **13c**

4 lb. Ctn. JEWELL **42c** NO. 2 PHILLIPS TOMATOES **5c** NO. 2 1/2 CAN HOMINY 2 for **15c**

LARGE SALLY ANNE 303 Libby Jumbo PEAS **10c** Stokley PUMPKIN **10c** Miracle Whip Dressing qt **39c**

BREAD 2 for **13c** KING Mix Candy lb. **10c** Chocolate Drops **10c** Bon Bon Candy lb **15c** NOVELTY Mix Candy lb. **12c**

20 OZ. STOKLEY'S TOMATO JUICE 2 for **15c** KEROSENE 5 gal. **39c** 2 1/2 SILVER FLOSS KRAUT 3 for **25c**

NO. 1 TALL Minot CRANBERRY SAUCE 2 for **23c** BALLARD'S FLOUR **23c** 69c

NO. 2 CAN OLYMPIA CORN 2 for **13c** KITCHENETTE GUAVA JELLY **10c**

HEINZ ASSORTED SOUP 2 for **25c** Except Clam Chowder, Consomme, Gumbo FANCY CAKE INGREDIENTS
Fancy Whole Glass CHERRIES lb. **43c**
Fancy Whole Glass PINEAPPLE SLICES lb. **39c**
Fancy Glass CITRUS lb. **29c**
Fancy Glass ORANGE PEEL lb. **20c**
Fancy Glass LEMON PEEL lb. **20c**
2 Lb. Pkg. Market Day RAISINS **15c**
SUN MAID CURRANTS **10c**

21 OZ. SWEET MIX OR DILL PICKLES 2 for **25c** Full Line Spices, Extracts & Molasses

OCTAGON CHIPS
Large **21c** Regular **9c**

NO. 1 CAN MACKEREL 3 for **25c**

Winter Park Eleven And Feds To Tangle Tomorrow

Reserves Expected To See Action In Seminole Team's Second Game This Week

By ILLIAN JOHNSON
Herald Staff Editor

The Seminole football team will play its second game of the season tomorrow at Winter Park. The team is expected to see action in the game, which is scheduled for 2 o'clock.

The team is expected to see action in the game, which is scheduled for 2 o'clock.

start with a line-up of...
The team is expected to see action in the game, which is scheduled for 2 o'clock.

SELECT SELECTIONS

By RALPH WARNER

There is a lot of...
The team is expected to see action in the game, which is scheduled for 2 o'clock.

Miami Hallback Seen As One Of South's Greatest

Eddie Dunn Has Averaged 7 Yards On Every Trip With Ball

By ILLIAN JOHNSON
Herald Staff Editor

The Miami Hallback...
The team is expected to see action in the game, which is scheduled for 2 o'clock.

Officials Predict 'Banner Year' For Sandlot Baseball

Will Have More Fans Than Any Year Since 1929

By ILLIAN JOHNSON
Herald Staff Editor

The officials predict...
The team is expected to see action in the game, which is scheduled for 2 o'clock.

Classified Advertisements

RATES: 1 insertion 10c a line, 2 insertions 20c a line, 3 insertions 30c a line, 4 insertions 40c a line, 5 insertions 50c a line, 6 insertions 60c a line, 7 insertions 70c a line, 8 insertions 80c a line, 9 insertions 90c a line, 10 insertions 1.00 a line.

THEY WOULD READ YOUR AD TOO, IF IT APPEARED HERE

BUSINESS SERVICE
MAKING...
FOR SALE
RENTS...
FOR RENT
MISCELLANEOUS
ROOMS AND BOARD

FREE ESTIMATES

Phone 5158 Orlando

Read Mail on back in one of 8,000 copies

THIS COULD BE YOURS WITH US TOO

WEARY? Not now!
Thanks to Black-Draught often that droopy, tired feeling occasioned by constipation is relieved by a simple vegetable medicine that simply makes the laxative get back to work and bring prompt relief. Just ask for BLACK-DRAUGHT... "An old friend of the family."

SEARS, ROEBUCK AND CO.

FOOTBALL

Amateur Day Nov. 11

College Academy vs. Jones High

Municipal Park 7:30 P. M.

FIREWORKS
FREE! LOOK!
FREE! CATALOG

THIS CURIOUS WORLD



THE PLANET JUPITER NOW HAS THE LARGEST FAMILY OF MOONS

WHAT IS A MARTINGALE?

ANSWER: A martingale is a strap on the harness of a horse...

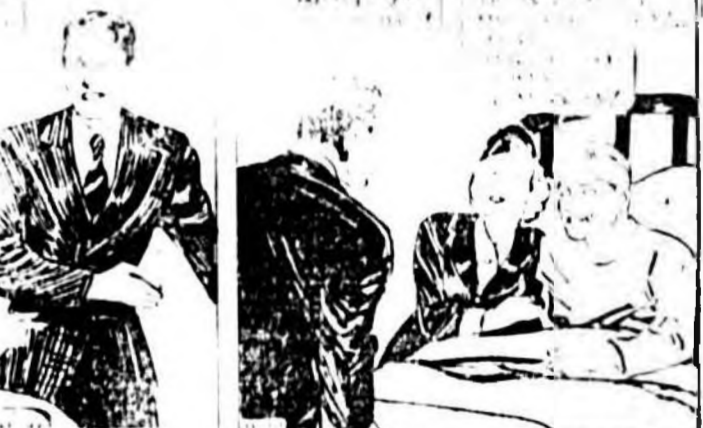
MYRA NORTH, SPECIAL NURSE



ALLEY OOP



DAN DUNN - SECRET OPERATIVE 48



THE PIPES OF PAN
CURIOUS MUD NESTS MADE BY MUD WAFERS.

THE PLANET JUPITER

NOW HAS THE LARGEST FAMILY OF MOONS

WHAT IS A MARTINGALE?

ANSWER: A martingale is a strap on the harness of a horse...

THE PLANET JUPITER

NOW HAS THE LARGEST FAMILY OF MOONS

WHAT IS A MARTINGALE?

ANSWER: A martingale is a strap on the harness of a horse...

THE PLANET JUPITER

NOW HAS THE LARGEST FAMILY OF MOONS

WHAT IS A MARTINGALE?

ANSWER: A martingale is a strap on the harness of a horse...

Law-making Has Become A Year Around Industry

Employs 4,000 And Cost Exceeds 20 Millions Annually

WASHINGTON, Nov. 10.—Law-making is now a year-around industry. The product it produces is not a bill or act, but a law. It is made in the legislative hall, but for such miscellaneous activities as the direction of the post office, in each branch of congress and custody of extensive and varied property in the buildings. The senate sergeant-at-arms, also doorkeeper and supervisor of door-keepers, elevator operators, carpenters, bookkeepers, locksmiths and messengers. The house has a separate post office, responsible for the attendants at the house door, and also for its own handling publication, and some of the employees who work in the legislative chamber itself, including the page boys. The house sergeant-at-arms, also handles and handles much of its money.

The headquarters of this major production unit is the capitol, but the legislative establishment is more than a building where congress meets several hours a day during part of the year. It consists also of heating and power plants and post offices and police headquarters, and greenhouses and carpenter shops and even a railroad.

Two men, the vice-president of the United States and the speaker of the house are charged with its administration. But like other business executives, they have a staff of lesser executives to help them. The wheels turning whether laws are being made or not. Their work goes on, in session and out, and most of them have served in the capitol in one capacity or another for many years. A change of administration brings some switching of offices but the routine work of the capitol continues unshaken by elections.

Five hundred and thirty-one of those who draw salaries from the legislative branch of the government are the senators and representatives themselves. Of the remainder, about 1525 are on the payroll of the house, 1200 on the senate list and 870 work for the architect of the capitol.

Not included in that does not include the employees of the library of congress and the government printing office, nor the temporary workers in the capitol. Yet the library and printing office are part of the plant, as well as two office buildings for congressmen and one for senators and the botanic garden.

Some 1300 employees serve as secretaries and clerks to senators and representatives. The majority of the others are under the jurisdiction of the clerk and the sergeant-at-arms of the house, the secretary and sergeant-at-arms of the senate and the architect. The first four each draw salaries of \$8,000 yearly and have broad executive authority.

The architect, along with the librarian of congress, is appointed by the president for an indefinite term. It has never been customary to change incumbents when administrations change.

The senate officials are named to serve "at the pleasure of the senate," which means until political control of that body changes. The house officials are elected for two-year terms but their re-election is a routine formality until control of the house changes. Although the house dies and is born again by election every two years, the technical break in the officials' tenure does not apply universally.

A rule provides that the clerk of the previous session shall call to order the newly elected house and preside until a speaker is chosen.

Plant Maintenance
A large part of the year-around work of the capitol consists in maintaining the huge plant. The architect handles new building and repair and is charged also with care of the extensive parks on the grounds, operation of heating, air-conditioning and power plants, and upkeep of the streets and pavements on capitol hill. In addition to his regular force, he is empowered to hire laborers by the day and at the moment he has nearly 150 of these.

The sergeants-at-arms are re-

A Three Days' Cough Is Your Danger Signal

No matter how many medicines you have tried for your common cough, chest cold, or bronchial irritation, you may get relief now with **Cromolium**. Serious trouble may be averted and you cannot afford to take a chance with any remedy less potent than **Cromolium**, which goes right to the seat of the trouble and aids nature to soothe and heal the inflamed mucous membranes and to loosen and expel germy mucus.

Unemployment From Wage Law Too High

HYDE PARK, N. Y., Nov. 10.—President Roosevelt made public last night a report from Administrator Andrews, placing the difficulties experienced by industrial workers and out of the actual pay-off constituted when the federal wage-hour law went into effect.

Andrews said many earlier reports "considerably exaggerated" the difficulties experienced by workers. His address to the actual pay-off constituted when the federal wage-hour law went into effect. He said that when all readjustments are completed, total employment will have been increased rather than decreased as a result of the law and about one-tenth of one percent of all gainful workers.

Record-Keeping

Other work of the capitol which knows no season is the gigantic task of record-keeping. The last congress had before it 17,110 bills and resolutions. Many of these were simply introduced, printed, and the copies filed in the document rooms. Others had long and involved legislative histories, whether or not they finally became law.

Most of the offices, through which bills pass on the intricate pathway toward becoming laws are under the jurisdiction of either the clerk of the house or the secretary of the senate. A congressional day at the end of two years, but it is a job which never ends. After adjournment, petitions and messages and papers are returned from the various committees to crowded files in the capitol.

The clerk and the secretary have other duties as custodians of public reports. Candidates for the senate must file statements of expenditures with the secretary; those for the house file such statements with the clerk. He also receives reports from political parties.

Not all of the off-season business of the capitol is remote from the congressional task of legislation. There is seldom a time when committees are not investigating and such groups have done much to keep things humming in the capitol during recent recesses.

Add to Total

The investigating committees add to the total of congressional workers. In recent years, employees of such senate committees have numbered around 200 nearly all the time.

The largest items of legislative expense are the salaries of the legislators. For the current fiscal year, congress provided \$260,000 for senators' pay, \$1,385,000 for representatives' and \$114,000 for the mileage allowances of the members.

The library of congress was allotted \$1,051,200 and an additional \$225,100 went to the copyright office of the library.

The government printing office was given \$6,610,000 in appropriations and working capital. The office charges other government agencies for the printing it does and is repaid out of their appropriations.

The botanic garden received \$114,350.

The capitol's railroad—a monorail trolley running underground between the capitol and the senate office building—will cost \$6,000 for repairs and operation.

The second congress, meeting in Philadelphia in 1791, appropriated \$129,730 for "compensation to members, officers and attendants" for a six-month period.

Law-makers as well as employees then draw pay on a pro-diem basis. There were no annual appropriations. Congress must have considered itself strictly a seasonal institution.

Administrators Andrews, placing the difficulties experienced by industrial workers and out of the actual pay-off constituted when the federal wage-hour law went into effect. He said that when all readjustments are completed, total employment will have been increased rather than decreased as a result of the law and about one-tenth of one percent of all gainful workers.

Table Supply Anniversary ARE IN THE AIR

LUCKY BARGAINS Today!

Table Supply Anniversary Your Lucky Day for Food Bargains!

CLOSED ALL DAY FRIDAY, ARMISTICE DAY

- PRINCESS YELLOW CORN No. 2 Can Or Scallops Not Dips, Med. Can 5 1/2c
- ECONOMY CRACKERS OR SOUP GRAHAMS 1-LB. BOX 10c
- NO. 2 ARGU CORN OR ARGU SWEET PEAS MEDIUM CAN 10c
- TOILET TISSUE 60-SHEET ROLLS 6 FOR 15c
- P AND G SOAP WHITE MAPINA 3 GIANT BARS 10c
- PAPPY'S GUAVA JELLY 3 LBS. 47c
- KELLOGG'S CORN FLAKES 3 PKGS. 19c
- SPICY ZIPPY SPONGE 8 OZ. 14c
- SALAD DRESSING QUART 22c
- SUNSET COFFEE POUND 15c

Special Quality Beef Event

- U. S. GOOD STEAKS POUND 35c
- U. S. GOOD CHUCK ROAST POUND 21c
- FLORIDA HAMBURGER 1 lb. 15c
- FLORIDA HAMBURGER 2 lbs 28c
- ANGLO CORNED BEEF 2 CANS 29c
- PERFECT BISCUIT PLAIN OR SELF-RISING 17c
- PRIDE OF JERSEY CRANBERRY SAUCE 17-OZ. CAN 10c
- MIX 'EM UP MIX 'EM UP 3 for 10c 2 for 15c

Del Monte WORLD'S FOOD FAIR

- DEL MONTE PEACHES 1 1/2 Can 11c
- DEL MONTE APRICOTS 19c
- DEL MONTE FRUIT COCKTAIL 2 TALL CANS 14c
- DEL MONTE ASPARAGUS 19c
- TOMATO OR PINEAPPLE JUICE 2 Tall Cans 15c
- DEL MONTE PINEAPPLE JUICE 1 1/2 Can 25c
- DEL MONTE TOMATOES Pack 15c
- Del Monte Sliced Peaches, Fresh Peaches, Pineapple Tid Bits, Apricots, Peas, 2 Cans.

Del Monte COFFEE lb. 23c

- MUSSELMAN'S STRAWBERRY PRESERVES 12-OZ. JAR 15c
- TEA DAINTE MAID, ORANGE PEKOE TEA GLASS FREE WITH 1/2-LB. PKG. 29c
- DISPOSABLE TISSUES KLEENEX 2 PACKAGES 25c
- KEROSENE 5 Gal 39c
- Pillsbury's Best FLOUR 4 Lbs. 6c 4 Lbs. 11c
- PUMPKIN NO. 2 CAN 10c
- CERTIFIED WAFFLE OR PANCAKE FLOUR 28-OZ. PKG. 5c
- DINTY MOORE BEEF STEW 15c

SUGAR

Regular 5 Lbs. 21c
or With \$2.00 Food Order or Over
5 lbs. 16c

DEL MONTE C. G. OR G. B. CORN OR TALL FRESH PRUNES CAN . 8c

THOSE FAMOUS IDAHO! BAKING POTATOES! LOW PRICED TOO!

USDA RUSSET BAKERS 5 lb. 19c
YORK APPLES 5 LBS. 17c
NEW GREEN CABBAGE lb. 3c
DOZEN 19c

Del Monte COFFEE lb. 23c

Persian Limes 5c doz.

FOR SALE

7 ROOM TWO STORY STUCCO DWELLING located No. 2101 Sanford Avenue (Rose Court). 15 yrs. \$35.58 per month. \$500.00 CASH

5 ROOM FRAME BUNGALOW with TWO STORY GARAGE APARTMENT in connection. No. 801 E. 2nd Street. 15 Yrs. \$30.25 per month. \$425.00 CASH

6 ROOM TWO STORY FRAME DWELLING No. 610 Laurel Avenue. 15 Yrs. \$27.77. \$275.00 CASH

COLCLOUGH REAL ESTATE INSURANCE REALTY COMPANY TEL. 733 "WE SELL HOLC HOMES"

OUZI ZE FINE FRUIT AND NUT CAKE

2-lb. Cello Wrap 25c

Fruit Cake Makins'

- Sliced Citron, Lemon or Orange, 3-oz. Pkg. 10c
- SULE Citron, Lemon or Orange, lb. 29c
- Glace Cherries, lb. 39c
- Assorted Dried Fruits, lb. 39c

Old Fashioned Candy Chocolate Drops, Sea Air Mix, Orange Slice, lb. 10c

14-oz. Seal-Cello, pkg. 10c

Nuts
WALNUTS lb. 25c
BRAZILS lb. 25c
PECANS 2 lbs. 48c
MIXED NUTS lb. 25c

HOW DO YOU MAKE THIS NEW HOT SPAMWICH?

WITH VELVETA 15c and HORMEL SPAM 29c

THE TABLE SUPPLY STORES

NEXT TO PRINCESS THEATRE WE RESERVE THE RIGHT TO LIMIT QUANTITIES

HOW DO YOU MAKE THIS NEW HOT SPAMWICH?

WITH VELVETA 15c and HORMEL SPAM 29c

