

Sanford Herald

Serving Sanford, Lake Mary and Seminole County since 1908

88th Year, No. 142 - Sanford, Florida



Today: Partly cloudy. High in the mid to upper 70s. Wind northeast 10 mph.

For more weather see page 2A

TODAY

Don't panic

SANFORD — If you looked toward the west of downtown Sanford this morning and saw billowing clouds of thick, black smoke, it was really nothing to worry about. Though the smoke looked horrid and the rush of emergency vehicles to the scene looked very real, there was hardly cause for alarm. The area's readiness to respond to hazardous materials emergencies was merely being tested through a mock railroad disaster. The exercise is intended to foster stronger cooperation and coordination among the area's public and private agencies comprising the first response network to hazardous materials emergencies in east central Florida. The scenario will continue the next two days in and around the Amtrak train station on Perimeter Avenue in Sanford. Follow the details of the exercise in the Sanford Herald this week.

Meeting postponed

SANFORD — The next meeting of the Seminole County Expressway Authority, originally scheduled for March 28, has been postponed until Wednesday, April 2. The meeting will be held in the County Services Building, 1101 E. First Street in Sanford. The general subject scheduled for discussion is the proposed "Missing Link" of the GreeneWay from U.S. Highway 17-92 and Interstate-4.

Scheduled meeting

SANFORD — The Sanford Citizen's Advisory Board has scheduled an organizational meeting for Wednesday, March 12, beginning at 7 p.m., in the commission chambers of Sanford City Hall. Items on the agenda include appointment of committees to oversee by-laws and creating hearing processes. Also scheduled are other committee appointments and an assessment to determine needs and resources as outlined in the ordinance creating the Citizen's Advisory Board. The meeting is open to the general public.

P&Z meeting

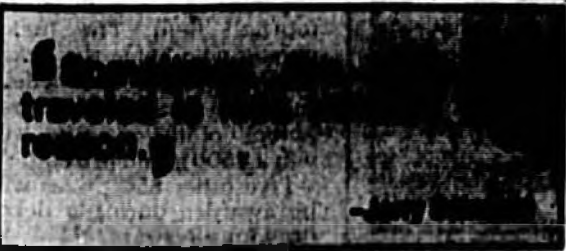
LAKE MARY — The Lake Mary Planning and Zoning Board will meet tonight in the commission chambers of Lake Mary City Hall. Items on the agenda include a site plan review for "Kids Together Day Care Center," a one-story commercial building in Technology Park, and a three story hotel at the west side of Currency Circle, in Primavera (Hilton Garden Inn applicant). The meeting will begin at 7 p.m. and is open to the public.

Democrats meet

SANFORD — The Democratic Executive Committee of Seminole County will hold the monthly business meeting this Thursday, March 13, at 7:30 p.m. at Shoney's Restaurant, 3180 S. Orlando Drive in Sanford. The main agenda includes the election of a new chairman, discussion of plans for a picnic/fundraiser at Katie's Landing in May, and discussion of plans for a boat ride/fundraiser in late summer. All interested Democrats are encouraged to attend and become involved.

See Briefs, Page 5A

| | | | |
|-----------------|----|-----------------|--------|
| Classified..... | 2B | Horoscope..... | 4B |
| Comics..... | 4B | Movies..... | 6A |
| Crossword..... | 4B | People..... | 6A |
| Dear Abby..... | 6A | Puzzles..... | 6A |
| Deaths..... | 4A | Sports..... | 1B, 2B |
| Dr. Cost..... | 4B | Television..... | 6A |
| Editorial..... | 4A | Weather..... | 2A |



Luring industry to north county

Incentive money for Brite

By RABBIT WHITE
Herald Staff Writer

SANFORD — The Seminole County Board of Commissioners is expected to cut a \$300,000 incen-

live deal today with Brite Voice Systems Inc., a \$110-million telecommunications company eager to set up business at the Heathrow International Business Center. Commissioner Win Adams called the arrangement "a real coup," and BCC Chairman Randy Morris said Brite's arrival would lead to a "continuing immigration of high-tech companies to the I-4 corridor." Brite Executive Vice President David Hemmings said the deal is a "win/win for Seminole County, the

See Brite, Page 4A

Electronics corp. eyes Sanford

By NICK PFERPAMP
Herald Staff Writer

SANFORD — The Sanford City Commission discussed the eco-

nomics development incentive request from MTI, Inc. during a work session Monday afternoon. The proposal was in conjunction with expected approval today by the Seminole County Commission. MTI, Inc. provides for design and manufacture of sophisticated electronic products in support of a number of U.S. Department of Defense projects. Currently based in Fort Walton Beach, MTI wants to build an 8,000 square foot facility on 1.5 acres in

See Electronics, Page 4A

Handicap doesn't keep motorcyclist from Bike Week

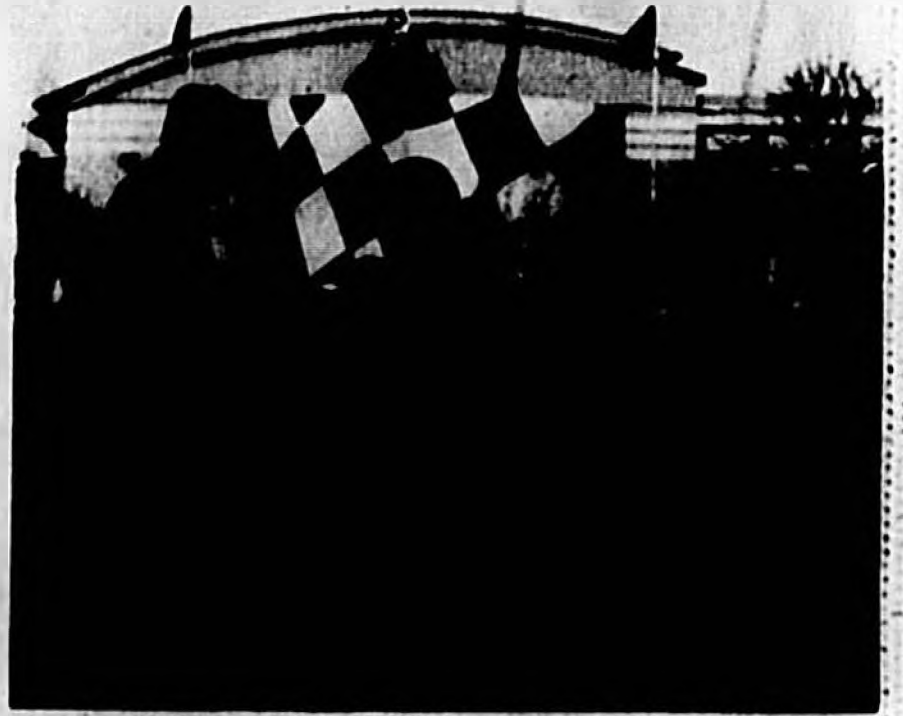
By VICKI BOGGS
Herald Senior Staff Writer

DAYTONA — Ed Beyer speeds around Daytona on a red and yellow Honda that is splashed with blue and purple highlights. The sidcar bolted to the right side of the bike is equally colorful. What makes the vehicle unique is not the side car — lots of the motorcycles have those. It's that Beyer rides in the sidcar even when there's no one on the motorcycle.

The young man, injured seven years ago in an automobile acci-

dent, is paralyzed below the waist. He gets around, when not on his bike, in a wheelchair. The specially designed sidcar, created by Tom Turning, holds him securely in place as he steers with the bright pink neoprene coated steering wheel. Turning has since sold his conversion company to Richard Oliver of Tomco Conversions, Inc. of Wilcox, Penn. "We do quite a few conversions for people who are physically challenged who are interested in pursuing a particular hobby or area

See Bike, Page 4A



A tourist in Daytona Beach admires Ed Beyer's special motorcycle.

Late utility bill payments causing problems

By NICK PFERPAMP
Herald Staff Writer

SANFORD — It looks like a dilemma. Sanford officials are complaining that people are not paying their utility bills on time. The people say the city is not sending out the bills on time. The city says more and more people are not paying their bills on time, causing a shortfall in operational funds. Citizens however, have complained that the bills are not being mailed on

time, bills are being lost in the mail, or they were on vacation when the bill arrived and came home to find their utilities had been shut off. The situation was discussed during Monday afternoon's Sanford City Commission work session. When asked if he had a suggestion, Utility Director Paul Moore proposed a more flexible payment, with the city allowing the waiver of one late fee per year, where late fees are not charged. "I certainly don't want to go in that direction," said Commissioner Whitey Eckstein. "I don't

want to give people one freebie a year. It's a bill and just like any other bill, it should be paid." Commissioner Kerry Lyons agreed saying he was also against allowing any waiver. "We've had a rash of delinquent payments in the past few months," Lyons explained. "I think we should consider making it a little steeper for people. I've looked into it and some cities allow one waiver per year." According to figures supplied to the commission by Moore, the cities of Altamonte Springs.

See Utility, Page 5A

Play ball!



Opening day ceremonies were held Saturday at Fort Mellon Park in Sanford, for this year's Babe Ruth Baseball League. The Sanford Parks and Recreation Department says there are approximately 550 youngsters enrolled in this year's league. Following dedication ceremonies league play began for some teams, with others to have their first days during this week. Additional photos Page 2A, 1B.

Alert deputy nabs gypsies

By NICK PFERPAMP
Herald Staff Writer

SANFORD — Two people, described by sheriff's investigators as gypsies, were arrested Monday. There is no immediate indication whether they may have been two of three persons believed to have been involved with the series of burglaries done by gypsies in the area during recent months. The two were first spotted at 11:15 Monday morning by sheriff's investigator Jan Kloth. Kloth was patrolling on Markham Woods Road, checking into possible gypsy burglaries in the Wingfield Reserve subdivision near Longwood. Kloth located a white Buick Regal with a man and woman, who apparently fit the descriptions of gypsies suspected of burglarizing homes in the county during the past two months. The vehicle however, sped away

See Gypsies, Page 5A

Help rescue the river during cleanup celebration

By VICKI BOGGS
Herald Senior Staff Writer

SANFORD — Last March, thousands of people across the state braved steady rain and unseasonably cold temperatures to clean up the St. Johns River from the marshy headwaters in Brevard County in the south of the state to the mouth as it pours into the Atlantic Ocean in Jacksonville. This year organizers are hoping for better weather for the St. Johns River Celebration and for an even better turnout. The March 22 celebration, which is actually a cleanup effort of record-breaking proportions, will take place at hundreds of locations along the 310 mile St. Johns River, including 11 sites in Seminole County. Last year, the volunteer workers pulled more than 300,000 pounds of trash from the river and



its lakes and tributaries. Seminole County brought out several hundred volunteers at its various sites during the first event last March. They found everything one could imagine in the waterways of the St. Johns through this county from tires to clothing to cans to the proverbial kitchen sink. As in the first cleanup celebration, this year's event will take place from 8 a.m. until noon. County organizers are planning a post-cleanup

party which includes a barbecue and musical entertainment provided by WMMO radio at Wekiva State Park from 12:30 until 4 p.m. The state park will offer free admission to those who look part in the cleanup. Volunteers are being asked to bring a rake or a stick for shoreline cleanup, dip nets for boats and canoes and bug spray. Those who have boats or canoes are also asked to bring those. Those who come out to help this year should be sure to wear their wading boots or their old comfortable shoes, comfortable clothes, a hat, sunglasses and sunscreen. The organizers will provide trash bags and disposable gloves to volunteers who want them. The focus in Seminole County will be Lake Monroe and Lake Jesup, which are the two largest bodies of water in the county. The Seminole County locations for the cleanup

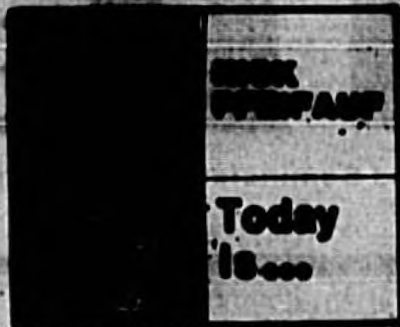
See Cleanup, Page 5A

IN BRIEF

Top student is tops again

LAKE MARY — The number one ranked student in the junior class at Lake Mary High School has one more honor to add to his achievements. Alan Jamison scored a perfect 1000 on the PSAT. That, in addition to having already completed six Advanced Placement courses and 12 dual enrollment college courses. He was the only eleventh grader on Lake Mary's Junior Engineering Technical Society (JETS), which recently placed first in the region. Outside the classroom, Jamison is equally busy and accomplished, especially in the arena of debate and marshal arts. He recently won the North Florida Debate Tournament in policy team debate. He is a serious student of Tae Kwib Do where his exceptional skills have garnered him the Third Degree Black Belt status.

Spanish Flu killed nearly 500,000



Talk about spreading a disease: It was on March 11, 1918 when the first case of what was first called Spanish Flu was reported in the United States. It started in Fort Riley, Kansas

when 107 soldiers became sick. By the end of 1918, nearly 25 percent of the entire population of our nation had some form of Spanish Flu.

In all, nearly 500,000 civilians died from the virus, exceeding the number of U.S. troops killed during World War I. World wide, nearly 22 million people died from it by the end of 1920.

The origin of the virus was reportedly never determined, although some believe it started somewhere in Asia. The name "Spanish" was attached because of a relatively high percentage of people in that nation to perish because of it.

Here at home, it was a panic.

Across the nation, most outdoor activities were cancelled, and many public service workers were unable to work.

It was 130 years ago today that John Chapman died. He was better known as Johnny Appleseed.

In historic birthdays, a one, and-a-two, Lawrence Walk was born on March 11, 1905 in Strasburg, North Dakota. His TV show featuring "Champagne Music" is said to have been the longest running program in TV history, live from 1955 until 1971 when his network sponsors dropped him. "he was simply too old and played music that

was too old," they said. Walk kept going however, and took his program to over 280 independent stations for another 11 years. In fact, right here in Central Florida, you can still see Walk re-run on TV. And you know who is watching him now? The same people who didn't watch before because they thought he was "too square." It's also the anniversary of Malcolm Campbell's birth in 1895. He was the first man to travel his motor (average 100 mph) in an hour.

Take me out to the ball game



Kevin Williams was among the many young fans who got their mitts on the first day of baseball in Sanford this past weekend. The 4-year-old was not so sure that the cap he



was, indeed, was quite the size. The Network Electrical Systems Seminoles were issued hats that were designated as one-size-fits-all. Young Washington made the cap as light as he



possibly could, without it doing his head any good. He will all do sooner or later, that one size does not fit all.



The Kiwanis Club of Sanford has sponsored this cherry softball team in the Sanford league for this season. The young ladies, coached by Greg Hardy and Lucy Sellers, are ready for action.



The sponsors of the various teams participating in the Sanford baseball program wanted to take an active part in the progress of their teams beginning with the season, so, to start things off, the sponsors began the season by throwing out a first pitch to the catchers of their teams. Throughout the season, the sponsors will provide moral as well as financial support to their teams.

WEATHER

Today: Partly cloudy. High in the mid to upper 70s. Wind northeast 10 mph. **Tonight:** Partly cloudy. Low in the upper 50s to mid 60s. Wind northeast 5 to 10 mph. **Wednesday:** Partly cloudy. High in the mid to upper 70s. Wind east 10 mph. **Thursday:** Partly cloudy. Lows in the upper 60s. Highs in the mid to upper 80s.

Daytona Beach: Waves are 2 to 3 feet and glassy. Current is running to the south with a water temperature of 66 degrees. **New Smyrna Beach:** Waves are 2 feet and glassy. Current is running to the south with a water temperature of 65 degrees.

WEDNESDAY

SOLAR TABLE: min., 8:15 a.m., 8:55 p.m., maj., 1:50 a.m., 2:15 p.m. **TIDES:** Daytona Beach: high, 10:35 a.m., 10:50 p.m.; low, 4:17 a.m., 4:34 p.m.; New Smyrna Beach: high, 10:40 a.m., 11:04 p.m.; low, 4:23 a.m., 4:39 p.m.; Cocoa Beach: high, 10:55 a.m., 11:19 p.m.; low, 4:37 a.m., 4:54 p.m.

MIAMI — Florida 24-hour temperatures and rainfall at 8 a.m. EDT today:

| City | Hi | Lo | Rain |
|-----------------|----|----|------|
| Apalachicola | 72 | 60 | 0.0 |
| Caymans Beach | 68 | 58 | 0.0 |
| Fort Lauderdale | 68 | 73 | 0.0 |
| Fort Myers | 66 | 47 | 0.0 |
| Gainesville | 75 | 56 | 0.0 |
| Jacksonville | 75 | 66 | 0.0 |
| Key West | 64 | 77 | 0.0 |
| Miami | 68 | 73 | 0.0 |
| Pensacola | 70 | 55 | 0.0 |
| Tallahassee | 71 | 55 | 0.0 |

Sanford Herald

Tuesday, March 11, 1987
Vol. 68, No. 142

Published Tuesday through Friday and Sunday by The Sanford Herald, Inc. 308 N. French Ave., Sanford, Fla. 32771

Periodical Postage Paid at Sanford, Florida and additional mailing offices.

Postmaster: Send address changes to THE SANFORD HERALD, P.O. Box 1667, Sanford, FL 32772-1667.

Subscription Rates (Daily & Sunday) Mail Home Delivery

| | | |
|----------|---------|---------|
| 3 Months | \$19.00 | \$24.00 |
| 6 Months | \$36.00 | \$48.00 |
| 1 Year | \$70.00 | \$95.00 |

Florida Residents must pay 7% sales tax in addition to rates above.

Phone (407) 322-3311



Mike Moynihan, a member of the Network Electrical Systems Seminoles, checks out the goodies available for purchase in the concession stand. Before, during and after games, youngsters and fans can purchase everything from hot dogs and sodas to candy and chips.

Cow plop and fun day are set at Lyman High

LONGWOOD — The Lyman High School Athletic Boosters will host the fourth annual Family Fun Day and Cow Plop from 4 to 8 p.m. on Saturday, March 15 in and around the school's football stadium. It will feature food, fun, games, prizes and, of course, the cow. The event, which generates funds to support school teams and activities, will include radio personality Nikki Knight from XLIOS.7 Lyman's cow will make an appearance at 6 p.m. on the football field. The lucky person who holds the ticket assigned to the spot where the cow makes the first "plop" of the evening will win a \$500 grand prize. Five other \$50 prizes will be awarded during a ticket drawing afterward. Tickets for the cow plop are \$5 each and are available through school sports teams and booster club.

POLICE BRIEFS

Disputes

• Diego Martin Centurion, 19, of 616 Brigham Place, Lake Mary, was arrested by Casselberry police Thursday. Officers said they were called regarding a dispute between two persons in front of a store in the 1400 block of Seminole Blvd. He was charged with possession of under 30 grams of cannabis and possession of drug paraphernalia.

• Robert Warren Smith, 33, of Winter Springs, was arrested by Sanford police Thursday in the 2800 block of Empire Place in Sanford where he reportedly had a dispute with a female. He was charged with domestic violence, criminal mischief and resisting an officer without violence.

Sanford police reports

• Someone reportedly broke into a business Thursday in the 200 block of S. French Avenue in Sanford. The only item said to have been taken is \$10 in cash.

• Two TV sets with a combined value of \$486 were reported stolen Thursday from a residence in the 2800 block of S. French Avenue in Sanford.

• A residential burglary was reported Sunday in the 100 block of Garrison Drive in Sanford. Items valued at \$1,010 were said to be missing.

• A man told police he was struck unconscious in a parking lot in the 1800 block of Landings Drive Saturday. When he woke up he reportedly discovered his wallet containing an assortment of personal papers, were missing.

• A local doctor told police he was shoved from behind Sunday as he was exiting a store in the 2800 block of Orlando Drive. He said the person took his leather carrying case containing \$250 in items.

• Two speakers with a total estimated value of \$600 were reported stolen Saturday from a residence in the 1300 block of Elliott Street in Sanford.

• An estimated \$3,100 in jewelry and other items were reported stolen Friday from a residence in the 200 block of W. 24th Street in Sanford.

• A \$150 lawn mower was reported stolen Saturday from a residence in the 1400 block of Mara Court.

• A camcorder and various electronic equipment with a total estimated value of \$260 were reported stolen Saturday from a residence in the 2500 block of S. Sanford Avenue in Sanford.

Traffic stops

• Erica L. Taylor, 25, of 2481 Crawford Drive, Sanford, was stopped by sheriff's deputies Sunday at 30th Street and Strickland. She was charged with operating a motor vehicle with a cancelled/suspended/revoked license and obstruction by a disguised person.

• James T. Johnson Jr., 39, of Casselberry, was stopped by Lake Mary police Saturday on SR-46. He was charged with driving under the influence, and driving with a suspended license.

• Jerry F. Kistner, 45, of 656 Brightview Drive, Lake Mary, was stopped by Lake Mary police Saturday in the 3000 block of W. Lake Mary Boulevard. He was charged with driving under the influence and disorderly intoxication.

Burglary

• Billy Medley, 41, with no local address, was arrested by Sanford police Saturday. According to the arrest report, he attempted to break into a 1994 Chevrolet van Saturday in the 700 block of Palmetto Avenue in Sanford. When he did however, he reportedly awoke a man and woman who were sleeping in the van, who confronted him. He fled on foot, and was located by Sanford police at Eighth Street and Sanford Avenue. A search reportedly revealed he was in possession of burglary tools, a crack pipe, and a Sanford Fire Department badge which had reported stolen in a previous burglary. There was also approximately \$600 damage said to have been done to the van.

• Medley was arrested on charges of attempted burglary, possession of burglary tools, and possession of stolen property.

Domestic cases

• Clarence Lee Porter, 51, of 1803 W. Fourth Street, was arrested by Sanford police Saturday as the result of a reported altercation with a female in the 1900 block of W. Fourth Street. The arrest report said Porter came to the police station to give his side of the story. He was arrested on a charge of aggravated battery domestic violence.

• Thomas J. Brennan, 44, of 148 Wildwood Drive, Sanford, was arrested by Sanford police at his residence Friday following a reported altercation with his wife. He was charged with battery, domestic violence.

Stolen and recovered vehicles

• A gold 1985 Maeda, license number VCR-43Q was reported stolen Sunday from a parking lot in the 2900 block of Orlando Drive in Sanford.

• A 1984 Buick was reported stolen Friday in Castle Brewer Court. The vehicle was recovered behind the 900 block of Holly Avenue, but Sanford police said the wheels and rims, valued at \$1,000 had been removed.

• A blue 1986 Buick, license number UZT-19F was reported stolen Friday in the 100 block of Laurel Drive in Sanford.

• A blue 1983 Oldsmobile, license number UZX-17A was reported stolen Friday in the 3300 block of Orlando Drive in Sanford.

• A \$4,000 golf cart containing tools and other equipment, was reported stolen early Monday in the 1800 block of West First Street in Sanford.

Chambers team up for scholarships

By WENDY FRENCH
Herald Staff Writer

SANFORD — "For years, we have been asking for other chambers to join us in this scholarship fund drive," said Wanda Kelly, executive director of the Greater Sanford Chamber of Commerce. "Now, for the first time, we have assistance and it came from the Greater Oviedo Chamber."

A check in the amount of \$1,000 was presented to the foundation Friday morning at the Seminole County School Board office on Lake Mary Boulevard, during the foundation's regular meeting.

The foundation was founded by the Sanford chamber in 1984. In that first year, 13 students were given scholarship awards to attend college.

According to Kelly, "Through the years, the fund has

distributed over \$300,000 to over 400 Seminole County students to prepare them for the work force through college education, or vocational and work programs through sports/academic endeavors."

During 1996, the United Chambers Scholarship program became a county wide program, including the three chambers, Greater Lake Mary, Heathrow Chamber, Greater Oviedo Chamber and Greater Seminole County Chamber.

During this past year, the board of directors has grown from six individuals in Sanford and North Seminole County, to over 18 persons representing all parts of the county.

Kelly said she was thrilled that the drive is beginning to spread, and hoped that other chambers will now join in the assistance program to help students in furthering their education.



Albert Speleberg, right, of the Greater Oviedo Chamber of Commerce, presented a check in the amount of \$1,000 to David Wright, president of the United Chamber Scholarship Foundation.

County, three cities join DUI crackdown

From Staff Reports

It was a city/county/state crackdown on drunk drivers this past Friday night and early Saturday morning. A checkpoint was set up on U.S. Highway 17-92 south of Sanford, by officers of the Florida Highway

Patrol, Seminole County, and the Lake Mary and Longwood police departments.

The following arrests were listed in reports available as of Monday morning:

• Victor A. Delgado, 38 of Orlando was arrested Friday

night on a charge of driving with a suspended/revoked license.

• Joseph R. Scheuering, 37, of 5010 Hester Avenue, Sanford, was arrested on a charge of driving with a suspended/revoked license.

• Steven J. Bunker Jr., 33, of Altamonte Springs, was arrested early Saturday morning on a charge of driving under the influence.

• Joseph J. Zadrozni, 45 of Orlando, was arrested on a charge of driving with a suspended license.

• James Alan Dunne, 34, of Winter Springs reportedly pulled into a nearby parking lot and attempted to turn around to avoid the checkpoint. He was arrested on a charge of careless driving and driving with a suspended license.

Gypsies

Continued from Page 1A

and Kloth gave chase. The pursuit continued into Altamonte Springs, where the Buick crashed into another vehicle at the intersection of Palm Springs Road and Central Florida Parkway. Deputies eventually stopped the vehicle in the Altamonte Mall parking lot.

Sheriff's spokesman Ed McDonough said the two first identified themselves as Krystyna Ciborowaka of Richmond, Va., and Siana Kunda of Ridgewood, N.Y. The identities both proved to be fictitious, and they were booked in the John E. Polk Correctional Facility as John and Jane Doe.

Florida law requires they be held without bond, until their identities are confirmed. A fingerprint check with the FBI is presently under way.

At present, the man is to be charged with fleeing and attempting to elude. The female will be charged with possession of an altered driver's license.

The two persons considered as gypsies from earlier burglaries in Seminole County were Barbara and Tamara Dolinska. They reportedly had many aliases. Deputies said they would operate under the guise of looking for a lost dog, and walk through neighborhoods until they found a house which could be entered.

One of their burglaries reportedly took place Saturday, Feb. 1 at a home on Bear Lake Road in Forest City. Another was on Sunday, Feb. 2 in the

Rolling Hills subdivision near Longwood. Still another similar case was reported Tuesday, Feb. 4 at a home on Estates Place near Longwood.

In some of the cases however, there was an indication that the two women also had a man involved, who witnesses said may have been driving a getaway vehicle. Deputies had identified him as Jan Jablonaki. He was not specifically wanted in connection with previous burglaries, but was being sought for questioning.

Today, sheriff's investigators were to check with homeowners in the Markham Woods area where the two were first seen Monday, to determine if any burglaries had been reported.

Harrell & Beverly Transmissions
322-84
Call - Same Location

Age Has Its Privileges:

FREE Checking for Those Over 50.

If you're over 50 years old, congratulations! SunTrust is now offering personal checking with unlimited check writing completely free when you have direct deposit. There are no monthly maintenance fees and no minimum balances required. Think of it as a perk that comes with age.

To open your account, simply visit a SunTrust office today, or call us at 1-800-2-SWITCH (279-4824). Free checking for those over 50. It's just one more way we help you be ready for life.



Visit our web site at www.SunTrust.com

Member FDIC. © 1997 SunTrust is a registered service mark belonging exclusively to SunTrust Banks, Inc. ORL 117-7 Offer good with direct deposit only. Available at SunTrust Bank in Orange, Seminole, Citrus, Lake and Brevard counties.

LEE'S Famous Recipe Chicken

WAS IT HOT CHICKEN BY THE PRICE

1905 S. French Ave., Sanford • (407) 323-3650

| | |
|---|--|
| 15-Piece Family Feast \$15.99 • 12 pieces of chicken, mixed • 3 sides • 1 1/2 pint gravy • 8 biscuits *Not valid with any other offer or discount. Good for a limited time. | 25-Piece Family Bucket \$18.99 • 20 pieces of chicken, mixed • 5 sides • 1 1/2 pint gravy • 8 biscuits *Not valid with any other offer or discount. Good for a limited time. |
| 2-Piece Super Snack \$2.99 • 2 pieces of chicken, mixed • 1 side of your choice • 1 homestyle buttermilk biscuit *Not valid with any other offer or discount. Good for a limited time. | 2-Piece Combo Meal \$2.99 • 2 side things • 1 homestyle buttermilk biscuit • 30 oz. drink *Not valid with any other offer or discount. Good for a limited time. |

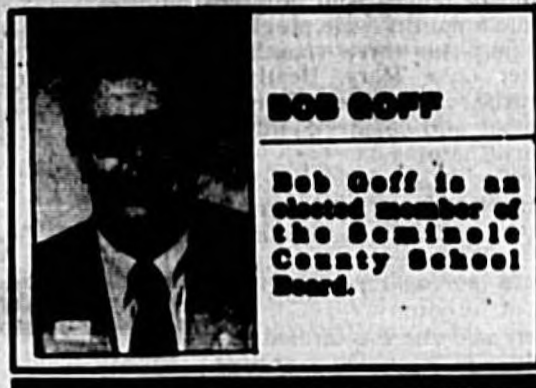
Editorial/Opinion

A few random thoughts on school board issues

Recently, you have heard State Commissioner of Education Frank Brogan and others, talk about "raising the bar" in regards to standards students must meet in learning. Did it ever occur to anyone that until everyone can pass over the bar, it's not time to raise it? That resources need to be allocated to assure complete success--that we should not accept 50% of the students being below-average as we do now.

Last year, Superintendent Paul Hagerty changed the way textbooks are purchased. Textbooks purchases are big business. Each year, almost \$4,000,000 is spent on textbooks. The process we have now has declared that teachers are open targets for large textbook publishers. Are you comfortable knowing that one high school English textbook publisher treated 50-60 teachers to dinner and drinks at Maison et Jardin. Other publishers provided dinners for upwards of 200 teachers at the Marriot where lots of expensive door prizes were awarded. Textbook reps are frequent callers to your child's teacher--during the school day. And cookies and snacks are frequently left in teacher workrooms by hardworking salespersons trying to leave the voters for the next textbook with just that "right" feeling towards their company.

Would you accept this behavior from large construction companies bidding on school construction contracts? Or vendors trying for maintenance supply contracts? Remember the scandal of a few years ago when Maintenance purchased a 10 year supply of a chemical that had a shelf life of only a year? Hopefully this will soon change as new methods of awarding textbooks orders are being explored.



BOB GOFF

Bob Goff is an elected member of the Seminole County School Board.

...
Fiscally Irresponsible: Recently Jeanne Morris, a School Board member, leveled charges of "fiscal irresponsibility" because there was a motion to reduce the Staffing Formula from 27.7 to 25 to 1 in grades K-2-3 (grade 1 is already state mandated and funded at 10-2). How can a Board member state that class size is of utmost importance and then find excuse after excuse to keep class sizes unusually large?
 ...

Is it not the responsibility of the Board to set the standards by which the Superintendent runs the system? Is it not the responsibility of the Superintendent to run the system according to what the Board feels is in the best interests of the children? Is smaller class size worth asking the Superintendent to trim his previously protected budget areas?
 ...

Former School Board member Larry Strickler has shown up in several places lately. As the vice chairman of the Sanford Downtown Redevelopment Agency (who is the Chairman, by the way????) he has proclaimed that if you citizens spend a few million--or a hundred million--dollars on a new courthouse that business will come to downtown Sanford. An employee of BellSouth, he has taken another paid part time job with Excel, the School System's contracted alternative school. He's working on the State Task Force in the School-to-Work initiative. Recently he declared that Excel Director Tim Giovannini, who has a part time consulting contract with the School System would soon have direct access to Superintendent Paul Hagerty--by passing several layers of Giovannini's superiors.

I understand that Strickler is trying to re-route a \$500,000 School To Work Grant from the Seminole County School System to Orange County's new Excel Program, which Strickler is trying to set up. If you have a problem trying to keep all the player's straight, don't feel bad...a lot of people are...and they are wondering what Strickler's ulterior political motive is. Isn't there a state law concerning former elected officials being paid lobbyists? Does Strickler know, or care, about the law and has he forgotten that he quit the job as School Board member, choosing not to run in 1986 when he had no opposition?
 ...

Sometimes it is not what you present but how you present it. Last week the School System Staff presented a study of 9th graders and their graduation and dropout rates. In response to recent criticism about what appears to be an unusually large number of high school students who leave school, the staff tracked 9th graders from enrollment to graduation. The Orlando Sentinel wrote a glowing article about the 6% dropout rate found by staff. Board Member Larry Furlong demanded an apology from anyone who disagreed with staff and called them irresponsible.

The truth is that any basic statistics student could drive a truck through the holes in the Staff study. First of all, anyone who transferred to another school was not counted. Nor was anyone who transferred in from either in or out of the county. Those students who were most likely to drop out (those who failed enough classes to be retained) were likewise dropped out of the study.

What was presented was the results of those students in the most stable home environments who remained on grade level throughout their high school career. It was not a statistical study of high school dropouts of any accuracy...but it will be the one which you will see quoted from now on.

Sometimes people can't see the forest for the trees.....luckily High School Director Tom Marcy intends to keep on digging to find out what did happen to the students who this study did not track.

Here's some food for thought:

| | High School Enrollment | difference |
|--------------|------------------------------|------------|
| Aug 1, 1986 | 16,348 | |
| Sept 6, 1986 | 15,870 | -475 |
| Oct 4, 1986 | 15,803 | -643 |
| Nov 1, 1986 | 15,673 | -678 |
| Dec 6, 1986 | 15,503 | -843 |
| Jan 10, 1987 | 15,440 | -905 |
| Feb 7, 1987 | 15,341 | -1004 |
| | Middle School Enrollment | difference |
| Aug 1, 1986 | 13,400 | |
| Feb 7, 1987 | 13,099 | -301 |
| | Elementary School Enrollment | difference |
| Aug 1, 1986 | 25,227 | |
| Feb 7, 1987 | 25,978 | +751 |

Bike

Continued from Page 1A
 of interest," said Oliver.

He said that there are many physically challenged people across the country who have motorcycles designed to meet their specific needs.

The motorcycle that he rides handles "as smooth as a Cadillac" and is capable of doing anything a regular motorcycle can do. Beyer said he has pushed the vehicle to speeds over 80 on the open road and said it is a strong machine.

Beyer said he has been riding a motorcycle since he was 4-years-old. When he was 18, he started driving a car. And it was there, not on the motorcycle that he was involved in the accident that nearly took his life.

"All those years on a motorcycle and I never got hurt," Beyer said. "I get in a car and am left in a wheelchair."

As family members wheel him into the special sidecar and assist him in strapping himself in, he notes that many people ask him how he was able to get back on a motorcycle.

"I wasn't hurt on a motorcycle," he said with an ironic laugh. "Getting back on the motorcycle was no problem."

The Beyer family loves motorcycles, Ed said.

"We all ride our motorcycles everywhere," he said. "My dad and brother got me my first motorcycle when I was four. I could ride a motorcycle almost



Herald Photo by Steve Barnes

Ed Beyer behind the wheel of his motorcycle.

before I could ride my bicycle." Beyer and his family have been coming to Bike Week for more than a decade.

"We love it here," he said. "The people are so friendly and there's so much to do."

His father and brother waited impatiently at a stop sign, revving their engines, as a handful of Bike Week visitors looked over the motorcycle, took pictures and asked questions.

"They're gonna leave me," he said, turning the steering wheel

in the general direction of his family. "Gotta go."

The motorcycle whined into the next gear as the three sped around the corner and into the spreading darkness of evening near the Daytona International Speedway where they had spent the day watching races.

"That is so cool," said one woman who had been admiring the vehicle. "Wouldn't want to have to have one, but that is so cool."

Brite

Continued from Page 1A

state and Brite. We would like to give Central Florida strong support if an appropriate cost-offsetting package can be agreed on."

Seminole County's dollars represent 30-percent of a \$1.5 million State Qualified Target Industry (QTI) Tax Refund package. Brite, currently based in Wichita, Kan., will receive 80-percent (\$1,200,000) from the state of Florida.

The company supplies voice processing systems and other services to telephone companies such as AT&T, BellSouth, Sprint and MCI.

Brite officials want to relocate corporate headquarters, finance, administration, engineering and training organization, some international activities and sales departments here.

There would be 300 employees at Heathrow, making an average salary of \$55,000 a year. Plans call for 40 percent of these to come from out of state and the balance to be local hires.

Economic Development Manager Bob Turk said that funds need to be designated from the current EDP or a new funding source be identified. Staff urged the BCC to approve the Brite deal, contingent upon state approval. The latter is a given, since the whole plan was begun with a plea to the Qualified Target Industry Tax Refund

Kaiser delivers county shakeup plan

By ROSS WATTS
 Herald Staff Writer

SANFORD - Acting Seminole County Manager Gary Kaiser had everyone's attention this morning when he presented his comprehensive Reorganization of County Government proposal to the Board of County Commissioners.

Kaiser's plan calls for a "fundamental rethinking and radical redesign" of the way the county does business.

Although he praised the "many, many employees who were giving their best efforts"

to the county, Kaiser said to expect changes. The Public Works Department, he said, is being examined from top to bottom and the commissioners would hear the result of the study in three to four weeks.

Part of Kaiser's proposal was to eliminate the County Department of Health and Human Services and that associated divisions and their affected positions be reassigned.

He also recommended that the function of land acquisition being performed by the Engineering Division be reassigned to the County Attorney's Office.

Program in Tallahassee.

The concept of giving tax breaks or incentives to big companies such as Brite is that the county will get back \$18 for each \$1 it spends. The key is to attract "clean industry" - reputable businesses with high-paying jobs (at an average of \$30,000 or more) that will stay in the area.

In the long run, the commissioners say that residents will realize they'll be paying lower taxes. It's vital that

guarantees are written into each pact.

Companies such as Brite regard Central Florida as a choice partner for their relocation strategies. Phoenix, Charlotte and Atlanta have felt an enormous impact from relocating in their cities. Seminole County officials expect similar success now and at the start of the next century.

Convincing the citizens of the value of the deals it cuts - such as the one with Brite - is another issue. Stay tuned.

Electronics

Continued from Page 1A

Sanford's Central Park. Officials anticipate construction costs to be \$300,000 with machinery, equipment and personal property valued at an additional \$200,000. Including the \$120,000 cost for the land, the total investment is \$620,000.

MTI requested the county provide \$27,500 in the incentive offer, with the city to match the amount.

Director of Community Development Charles Rowe however, explained that Sanford's portion of the plan would involve waivers of fees rather than a large amount of cash. "In ac-

tuality," he said, "the city would only pay out-of-pocket, approximately \$2,000."

The rest of Sanford's portion of the \$27,500 would come in the form of waivers for building permit, fire department plans review costs, license inspection and occupational license fees. Then, after the company begins hiring approximately 50 percent of the planned personnel, the city would give a loan in the amount of impact fees, which would amount to approximately \$17,615. The amount would be paid back to the city over a three year period at 7.5 percent interest.

MTI, Inc. indicates it plans to create 50 new jobs over the next five years. Rowe said the median pay for an estimated 20 of the employees would be \$35,000 to \$2,000, with the remaining 30 employees earning from \$20,000 to \$25,000 per year.

Rowe also said he understood the company, after beginning full operation in Sanford, would be considering expanding the facility another 8,000 to 12,000 square feet.

Based on the outcome of the county's decision on the request, City Manager Bill Simmons said he would bring the matter back at the next commission meeting for final approval.

FENELON BALAZAR AUDAIN

Fenelon Balazar Audain, 79, Michigan Avenue, Winter Park, died Friday, March 7, 1987 at Island Lake Center, Longwood. Born Jan. 6, 1918 in Port-de-Paix, Haiti, he moved to Central Florida three months ago. He was an educator and a member of Bethel Seventh Day Adventist Church, Miami.

Survivors include sons, Wilney, Nashville, N.C., Fed. Winter Park, Lins, Bethesda, Md., Aris, Miami; daughter, Gettie, Miami; mother, Rose Theophil, Haiti; brothers, Odney Romain, Boston, Abner Gordon, Chicago; sister, Genee Follard, New York City.

Golden's Funeral Home, Inc., Winter Park, in charge of arrangements.

DOROTHY J. POLK

Dorothy J. Polk, 65, Forrest Drive, Sanford, died Saturday, March 8, 1987 at Columbia Medical Center-Sanford. Born Feb. 20, 1922 in Tampa, she

moved to Central Florida in 1959. She was a homemaker and a member of Central Baptist Church. She belonged to D.A.V., Sanford, Eastern Star, American Legion and VFW of Sanford, and Sanford Woman's Club.

Survivors include son, John K. Polk, Sanford; daughter, Cheryl L. Polk, Sanford; brothers, Tommy C. Smith, Franklin, N.C., Lavery Ellis Smith, Tampa, Earl L. Smith, Dover, Fla., Dennis L. Smith, Sanford; sister, Louise Melba Pope, Lutz; four grandchildren.

Baldwin-Fairchild-Oaklan Park Cemetery and Funeral Home, Lake Mary, in charge of arrangements.

WILLIAMS, PATRICIA ANN
 Memorial service for Mrs. Williams, who died Sunday, Feb. 23, will be Thursday, Mar. 13, at 7 p.m. in the Central Baptist Church of Sanford.
 Arrangements by Briston Funeral Home, Sanford 389-1717.

EDITORIAL

Support county efforts to improve

One statement which is often made during political campaigning is, "This (county or city) government needs to be run like a business. I'm a business person, and as such, I'm the right person to be elected." Most people have heard such a statement or something similar.

There are some who dispute this statement, but let's face it: government is a business, and we believe it should be operated as such. Regardless of what paperwork, may say, it should also be considered a profit-making business.

Money received by a government through taxes is not immediately spent or put into an account. Some of it is invested at relatively good interest rates, and the money makes more money until the spending-time has arrived.

The more profit a government can make through such investments, the more money it will have to finance other projects and needs. Any government which "breaks even" or operates in the red for any length of time, will certainly go under, as evidenced by Orange County, California.

According to Acting County Manager Gary Kaiser, a possible reorganization of Seminole County is in the offing. Depending on what is proposed and what is actually adopted, it could be a move which will prove extremely beneficial to the population of the entire county.

There are many problems in city, county and state governments these days. One of the major ones is duplication of effort. Two departments assigned to similar roles, would have separate budgets for their operations. A reorganization into one department may be best. It may have a higher budget, but not as much as the two separate entities combined.

Another problem is the confusion when people try to contact a particular official. People trying to reach someone, for example, in a utility department, would be asked, water or sewer. Next you will find it's a matter of talking to someone who is in management. You may end up talking to the assistant, the assistant-assistant, or the secretary for the assistant to the assistant. You may also hear, "You have reached my voice mail. Please leave a message."

Citizens need to have someone with whom to discuss problems on a one-on-one basis, and not play telephone tag every time they call.

Then of course, there is always the problem of people employed by or elected to a government position. They may believe they are too important, have too much power, or too much control over other people or money. They get the feeling that no one can touch them, that only they know what is right and wrong. This type of person of course, doesn't do any of us any good.

Kaiser said his proposal would require several steps. It will also require approval by the commissioners, and if it is a major change, may even require some type of referendum vote.

But we believe this is the first step in what could be a long road toward progress. Maybe, along the way, the road will have to be widened to cover more territory, or narrowed to avoid having to destroy right-of-way. (public, not government).

But whatever happens, let's support any and all efforts to bring our local governments, all of them, into the year 2000 with as much business-savvy as possible.

Sanford Herald
 (USPS 481-350)
 300 N. FRENCH AVE., SANFORD, FLA. 32771
 Area Code 407-322-2811 or 831-9993

Lacy K. Lear - Editor
 Odessa H. Pugh - Business Manager

SUBSCRIPTION RATE:
 3 Months\$19.50
 6 Months\$39.00
 1 Year\$78.00

Florida Residents must pay 7% sales tax in addition to rates above.

Reaching Out in All Directions

Balanced, fair reporting of the news - local, sports, society, business, health and finance. Progressive editorials with a discerning eye on the issues. Advertising that gets you the best value for your money. We're proud of the way we reach our community from north to south, east to west, cover to cover.

Subscribe Today!
 322-2611

Sanford Herald

Briefs

Continued from Page 1A

Open house

SANFORD - The Seminole County sheriff's department will hold its annual open house this Saturday, March 15, from 9 a.m. until 3 p.m. at the sheriff's office, 1345 28th Street, at the Sanford airport.

Sheriff Don Salinger and his command staff will be on hand to greet visitors and answer questions. There will be exhibits illustrating the functions of the various divisions including Technical Air Operations, Range and Water, Seminoles Neighborhood Policing, DARE, School Resource Programs and Youth Services.

There will also be demonstrations from the SWAT Team, the K-9 unit and the Critical Response Team.

There is the John E. Polk Correctional Facility can also be arranged.

There is no charge for the open house. Refreshments will be served.

For additional information, contact public information officer Ed McDonough at 330-6884.

Disaster helpers

The American Red Cross of Florida, in consideration of the various tornadoes and floods which have devastated several parts of the nation, have established a special center to receive cash donations. Persons interested in sending a check or obtaining additional information are urged to contact Disaster Relief Fund, American Red Cross of Central Florida, 5 N. Bumby Ave., Orlando, FL 32803, or phone 1-800-HELP-NOW (435-7686) or in Spanish, 1-800-357-7575.

Curtain going up

SANFORD - Driving Miss Daisy by the Ritz Players, opens this Friday evening at the First Street Gallery in Sanford. The one-act play which won a Pulitzer Prize for its author, will feature Sanford's Alton Lathrop as "Hoke."

Utility

Continued from Page 1A

Apopka, Casselberry, Chuluota, Lake Mary, Longwood and Winter Park waive a late fee based on certain circumstances, some, such as Lake Mary, waive it only one time as a courtesy move.

Deltona, Orlando, Orange City, Seminole County and Winter Springs do not charge late fees.

A late fee in Sanford is five percent of the bill with a minimum of \$4, charged 21 days after the bill is overdue. Moore said if it is not paid in 40 more days, the water is turned off and people are charged a \$30 reconnecting fee. "Most of the time," he explained, "people don't know their water has been turned off until they get home from work, then they call us. That means it's usually after hours, and we charge an additional fee of \$10 for a late-hour fee."

"If we try the water of one fee per year, this could turn into a record keeping nightmare," commented Commissioner Brady Leonard.

Moore said there are approximately 200 people listed on the utility cut-off list each week. "We usually end up turning off between 50 and 75 services a week," he said.

Commissioner Lyons suggested seeking some way to reward people who pay on time, possibly by returning their deposit after a period of time.

"We already have inadequate deposits on hand," responded City Manager Bill Simmons. "Right now we only collect deposits for water and sewer, but not for stormwater or waste disposal."

"Alan," continued Moore, "the deposit is now \$50, but the average bill is \$65, so the deposits

Legal Notices

IN THE CIRCUIT COURT OF THE SEVENTH JUDICIAL CIRCUIT IN AND FOR SEMINOLE COUNTY, FLORIDA. PROBATE DIVISION. Case No. 87-100-CP. IN RE: THE ESTATE OF MARION LOUISE BART, Deceased.

NOTICE OF ADMINISTRATION. The administration of the estate of EARLETON LOWELL BART, deceased, File Number 87-100-CP is pending in the Circuit Court for Seminole County, Florida, Probate Division, at the address of which is Post Office Box 2771, Sanford, Florida 32771.

NOTICE OF ADMINISTRATION. The administration of the estate of RUTH E. BALL, deceased, File Number 87-100-CP is pending in the Circuit Court for Seminole County, Florida, Probate Division, at the address of which is R. O. Brewer C, Sanford, FL 32771.

NOTICE OF ADMINISTRATION. The administration of the estate of EARLTON LOWELL BART, deceased, File Number 87-100-CP is pending in the Circuit Court for Seminole County, Florida, Probate Division, at the address of which is Post Office Box 2771, Sanford, Florida 32771.

NOTICE OF ADMINISTRATION. The administration of the estate of EARLTON LOWELL BART, deceased, File Number 87-100-CP is pending in the Circuit Court for Seminole County, Florida, Probate Division, at the address of which is Post Office Box 2771, Sanford, Florida 32771.

NOTICE OF ADMINISTRATION. The administration of the estate of EARLTON LOWELL BART, deceased, File Number 87-100-CP is pending in the Circuit Court for Seminole County, Florida, Probate Division, at the address of which is Post Office Box 2771, Sanford, Florida 32771.

NOTICE OF ADMINISTRATION. The administration of the estate of EARLTON LOWELL BART, deceased, File Number 87-100-CP is pending in the Circuit Court for Seminole County, Florida, Probate Division, at the address of which is Post Office Box 2771, Sanford, Florida 32771.

Legal Notice

IN THE CIRCUIT COURT OF THE SEVENTH JUDICIAL CIRCUIT IN AND FOR SEMINOLE COUNTY, FLORIDA. PROBATE DIVISION. Case No. 87-100-CP. IN RE: THE ESTATE OF MARION LOUISE BART, Deceased.

NOTICE OF ADMINISTRATION. The administration of the estate of EARLETON LOWELL BART, deceased, File Number 87-100-CP is pending in the Circuit Court for Seminole County, Florida, Probate Division, at the address of which is Post Office Box 2771, Sanford, Florida 32771.

NOTICE OF ADMINISTRATION. The administration of the estate of EARLTON LOWELL BART, deceased, File Number 87-100-CP is pending in the Circuit Court for Seminole County, Florida, Probate Division, at the address of which is Post Office Box 2771, Sanford, Florida 32771.

NOTICE OF ADMINISTRATION. The administration of the estate of EARLTON LOWELL BART, deceased, File Number 87-100-CP is pending in the Circuit Court for Seminole County, Florida, Probate Division, at the address of which is Post Office Box 2771, Sanford, Florida 32771.

NOTICE OF ADMINISTRATION. The administration of the estate of EARLTON LOWELL BART, deceased, File Number 87-100-CP is pending in the Circuit Court for Seminole County, Florida, Probate Division, at the address of which is Post Office Box 2771, Sanford, Florida 32771.

NOTICE OF ADMINISTRATION. The administration of the estate of EARLTON LOWELL BART, deceased, File Number 87-100-CP is pending in the Circuit Court for Seminole County, Florida, Probate Division, at the address of which is Post Office Box 2771, Sanford, Florida 32771.

NOTICE OF ADMINISTRATION. The administration of the estate of EARLTON LOWELL BART, deceased, File Number 87-100-CP is pending in the Circuit Court for Seminole County, Florida, Probate Division, at the address of which is Post Office Box 2771, Sanford, Florida 32771.

along with Correy White and Darren Vierday. Following the opening night, refreshments will be served in the outside of the Gallery. The play will run for three weekends, with showtimes at 8 p.m. March 15, 16, 21, 22 and 28. There will also be matinee at 2:30 p.m. on March 16. The gallery is located at 307 Magnolia in downtown Sanford. For information and reservations phone 321-8111 or 322-0482.

Chamber luncheon

SANFORD - The Greater Sanford Chamber of Commerce is now accepting reservations for a luncheon from 11:30 a.m. to 1 p.m. Friday, March 14, in the Lakeside Landings room of the Marina Hotel, sponsored by Bill and Donna Miller of SUDA, Inc. Special guests will be Sanford Mayor Larry Dale and Seminole County Commission Chairman Randy Morris, who will present State of the City and State of the County addresses. Reservations are required, as seating is limited. Cost is \$10 for chamber members and \$12 for non-members. For additional information or reservations, call the chamber office at 323-2212.

Cleanup

Continued from Page 1A. Cleanup activities are: Hidden Harbor Marina, Lake Monroe Wildlife Park, the seawall west of Monroe Harbor, Monroe Harbor, the seawall east of Monroe Harbor, Sanford Boatworks, Cameron Wright Park, Marina Isle, Mullet Lake Park, the Old Hickey Fish Camp, and the Black Hammock Fish Camp. The St. Johns River is a unique body of water which is one of the few rivers in North America which flow north. Its tributaries, which include the Wekiva and the Econlockhatchee rivers, also flow north.

It was determined that the last time the city increased the deposit requirement was approximately 10 years ago. Following an extensive discussion, it was determined that any changes would have to be covered in the city's codes which may require an ordinance. The general consensus during the work session was not to support Moore's suggestion for a waiver. Simmons said he would have the city staff undertake a further study on the matter and bring it back for additional discussion.

Legal Notices

IN THE CIRCUIT COURT OF THE SEVENTH JUDICIAL CIRCUIT IN AND FOR SEMINOLE COUNTY, FLORIDA. PROBATE DIVISION. Case No. 87-100-CP. IN RE: THE ESTATE OF MARION LOUISE BART, Deceased.

NOTICE OF ADMINISTRATION. The administration of the estate of EARLETON LOWELL BART, deceased, File Number 87-100-CP is pending in the Circuit Court for Seminole County, Florida, Probate Division, at the address of which is Post Office Box 2771, Sanford, Florida 32771.

NOTICE OF ADMINISTRATION. The administration of the estate of EARLTON LOWELL BART, deceased, File Number 87-100-CP is pending in the Circuit Court for Seminole County, Florida, Probate Division, at the address of which is Post Office Box 2771, Sanford, Florida 32771.

NOTICE OF ADMINISTRATION. The administration of the estate of EARLTON LOWELL BART, deceased, File Number 87-100-CP is pending in the Circuit Court for Seminole County, Florida, Probate Division, at the address of which is Post Office Box 2771, Sanford, Florida 32771.

NOTICE OF ADMINISTRATION. The administration of the estate of EARLTON LOWELL BART, deceased, File Number 87-100-CP is pending in the Circuit Court for Seminole County, Florida, Probate Division, at the address of which is Post Office Box 2771, Sanford, Florida 32771.

NOTICE OF ADMINISTRATION. The administration of the estate of EARLTON LOWELL BART, deceased, File Number 87-100-CP is pending in the Circuit Court for Seminole County, Florida, Probate Division, at the address of which is Post Office Box 2771, Sanford, Florida 32771.

NOTICE OF ADMINISTRATION. The administration of the estate of EARLTON LOWELL BART, deceased, File Number 87-100-CP is pending in the Circuit Court for Seminole County, Florida, Probate Division, at the address of which is Post Office Box 2771, Sanford, Florida 32771.

NOTICE OF ADMINISTRATION. The administration of the estate of EARLTON LOWELL BART, deceased, File Number 87-100-CP is pending in the Circuit Court for Seminole County, Florida, Probate Division, at the address of which is Post Office Box 2771, Sanford, Florida 32771.

NOTICE OF ADMINISTRATION. The administration of the estate of EARLTON LOWELL BART, deceased, File Number 87-100-CP is pending in the Circuit Court for Seminole County, Florida, Probate Division, at the address of which is Post Office Box 2771, Sanford, Florida 32771.

NOTICE OF ADMINISTRATION. The administration of the estate of EARLTON LOWELL BART, deceased, File Number 87-100-CP is pending in the Circuit Court for Seminole County, Florida, Probate Division, at the address of which is Post Office Box 2771, Sanford, Florida 32771.

Legal Notices

IN THE CIRCUIT COURT OF THE SEVENTH JUDICIAL CIRCUIT IN AND FOR SEMINOLE COUNTY, FLORIDA. PROBATE DIVISION. Case No. 87-100-CP. IN RE: THE ESTATE OF MARION LOUISE BART, Deceased.

NOTICE OF ADMINISTRATION. The administration of the estate of EARLETON LOWELL BART, deceased, File Number 87-100-CP is pending in the Circuit Court for Seminole County, Florida, Probate Division, at the address of which is Post Office Box 2771, Sanford, Florida 32771.

NOTICE OF ADMINISTRATION. The administration of the estate of EARLTON LOWELL BART, deceased, File Number 87-100-CP is pending in the Circuit Court for Seminole County, Florida, Probate Division, at the address of which is Post Office Box 2771, Sanford, Florida 32771.

NOTICE OF ADMINISTRATION. The administration of the estate of EARLTON LOWELL BART, deceased, File Number 87-100-CP is pending in the Circuit Court for Seminole County, Florida, Probate Division, at the address of which is Post Office Box 2771, Sanford, Florida 32771.

NOTICE OF ADMINISTRATION. The administration of the estate of EARLTON LOWELL BART, deceased, File Number 87-100-CP is pending in the Circuit Court for Seminole County, Florida, Probate Division, at the address of which is Post Office Box 2771, Sanford, Florida 32771.

NOTICE OF ADMINISTRATION. The administration of the estate of EARLTON LOWELL BART, deceased, File Number 87-100-CP is pending in the Circuit Court for Seminole County, Florida, Probate Division, at the address of which is Post Office Box 2771, Sanford, Florida 32771.

NOTICE OF ADMINISTRATION. The administration of the estate of EARLTON LOWELL BART, deceased, File Number 87-100-CP is pending in the Circuit Court for Seminole County, Florida, Probate Division, at the address of which is Post Office Box 2771, Sanford, Florida 32771.

NOTICE OF ADMINISTRATION. The administration of the estate of EARLTON LOWELL BART, deceased, File Number 87-100-CP is pending in the Circuit Court for Seminole County, Florida, Probate Division, at the address of which is Post Office Box 2771, Sanford, Florida 32771.

NOTICE OF ADMINISTRATION. The administration of the estate of EARLTON LOWELL BART, deceased, File Number 87-100-CP is pending in the Circuit Court for Seminole County, Florida, Probate Division, at the address of which is Post Office Box 2771, Sanford, Florida 32771.

NOTICE OF ADMINISTRATION. The administration of the estate of EARLTON LOWELL BART, deceased, File Number 87-100-CP is pending in the Circuit Court for Seminole County, Florida, Probate Division, at the address of which is Post Office Box 2771, Sanford, Florida 32771.

Legal Notices

NOTICE OF SALE. PUBLIC AUCTION. IN PURSUANT TO FLORIDA STATUTES 713.15 THE FOLLOWING VEHICLES WILL BE SOLD AT PUBLIC AUCTION ON TUESDAY MARCH 20TH 1987 AT 10:30 A.M. AT COURTESY TOWING SERVICE, 200 ORANGE AVE., LONGWOOD, FLORIDA. THESE VEHICLES ARE SOLD AS IS WITH NO TITLE GUARANTEE. SELLER RESERVES THE RIGHT TO RE-REVOKE THIS RIGHT OF AUCTION SALES FOR TOWING AND STORAGE. VIEWING ONE HOUR PRIOR TO SALE. FORM OF PAYMENT IS CASH OR CASHIER'S CHECK.

- 1) 1986 FORD MUSTANG VIN# 1F8P41A1JF210001
2) 1984 FORD TEMPO VIN# 1F8P41A1JF210002
3) 1974 MERCURY CARO VIN# 8A8C8300000
4) 1978 CHRYSLER LEBARON VIN# FF2300007713
5) 1982 CHEVROLET CAPRICE VIN# 1A8080C100000
6) 1988 CHEVROLET BERETTA VIN# 1G11U1WJ2E29739
7) 1984 FORD MUSTANG VIN# 1F8P41A1JF210010
8) 1982 OLDSMOBILE VIN# 3A8V57C2C304000
9) 1987 FORD TEMPO VIN# 2F8P41A1JF210000
PUBLISHED: March 11, 1987 DEC-68

NOTICE OF APPLICATION FOR TAX DEED. NOTICE IS HEREBY GIVEN, that the Tax Lien Commission Fund, Inc., the holder of the following certificate, has filed said certificate for a tax deed to be issued thereon. The certificate number(s) and year(s) of issuance, the description of the property, and the name(s) in which it was assessed are as follows:

- Certificate No. 2307 Year of Issuance 1981 Description of Property: LEG UNIT 88AB LAKE HOWELL ARMS CONDO ONE 1377 PG 1145. Names in which assessed: Peter J. Hema. All of said property being in the County of Seminole State of Florida. Unless such certificate shall be redeemed according to law, the property described in such certificate will be sold to the highest bidder at the next best door. Seminole County Courthouse, Sanford, Florida, on the 16th day of April, 1987, at 11 A.M. A copy of Sale fee, application, documentary stamp fees and recording fees are required to be paid by the successful bidder at the sale. Full payment of an amount equal to the highest bid is due within 24 hours after the advertised time of the sale. All payments shall be cash or cashier's check, payable to the Clerk of the Circuit Court. Dated this 26th day of February, 1987. (Seal) MARIANNE MORSE CLERK OF THE CIRCUIT COURT SEMINOLE COUNTY, FLORIDA by: Michelle L. Silve Deputy Clerk PUBLISHED: March 4, 11, 16, and 23, 1987 DEC-13

NOTICE OF ADMINISTRATION. The administration of the estate of EARLTON LOWELL BART, deceased, File Number 87-100-CP is pending in the Circuit Court for Seminole County, Florida, Probate Division, at the address of which is Post Office Box 2771, Sanford, Florida 32771.

NOTICE OF ADMINISTRATION. The administration of the estate of EARLTON LOWELL BART, deceased, File Number 87-100-CP is pending in the Circuit Court for Seminole County, Florida, Probate Division, at the address of which is Post Office Box 2771, Sanford, Florida 32771.

NOTICE OF ADMINISTRATION. The administration of the estate of EARLTON LOWELL BART, deceased, File Number 87-100-CP is pending in the Circuit Court for Seminole County, Florida, Probate Division, at the address of which is Post Office Box 2771, Sanford, Florida 32771.

NOTICE OF ADMINISTRATION. The administration of the estate of EARLTON LOWELL BART, deceased, File Number 87-100-CP is pending in the Circuit Court for Seminole County, Florida, Probate Division, at the address of which is Post Office Box 2771, Sanford, Florida 32771.

NOTICE OF ADMINISTRATION. The administration of the estate of EARLTON LOWELL BART, deceased, File Number 87-100-CP is pending in the Circuit Court for Seminole County, Florida, Probate Division, at the address of which is Post Office Box 2771, Sanford, Florida 32771.

NOTICE OF ADMINISTRATION. The administration of the estate of EARLTON LOWELL BART, deceased, File Number 87-100-CP is pending in the Circuit Court for Seminole County, Florida, Probate Division, at the address of which is Post Office Box 2771, Sanford, Florida 32771.

NOTICE OF ADMINISTRATION. The administration of the estate of EARLTON LOWELL BART, deceased, File Number 87-100-CP is pending in the Circuit Court for Seminole County, Florida, Probate Division, at the address of which is Post Office Box 2771, Sanford, Florida 32771.

NOTICE OF ADMINISTRATION. The administration of the estate of EARLTON LOWELL BART, deceased, File Number 87-100-CP is pending in the Circuit Court for Seminole County, Florida, Probate Division, at the address of which is Post Office Box 2771, Sanford, Florida 32771.

NOTICE OF ADMINISTRATION. The administration of the estate of EARLTON LOWELL BART, deceased, File Number 87-100-CP is pending in the Circuit Court for Seminole County, Florida, Probate Division, at the address of which is Post Office Box 2771, Sanford, Florida 32771.

NOTICE OF ADMINISTRATION. The administration of the estate of EARLTON LOWELL BART, deceased, File Number 87-100-CP is pending in the Circuit Court for Seminole County, Florida, Probate Division, at the address of which is Post Office Box 2771, Sanford, Florida 32771.

NOTICE OF ADMINISTRATION. The administration of the estate of EARLTON LOWELL BART, deceased, File Number 87-100-CP is pending in the Circuit Court for Seminole County, Florida, Probate Division, at the address of which is Post Office Box 2771, Sanford, Florida 32771.

Legal Notices

CITY OF LAKE MARY, FLORIDA. NOTICE TO THE PUBLIC. NOTICE IS HEREBY GIVEN by the City Commission of the City of Lake Mary, Florida, that our Commission adopted Ordinance No. 88 at the regular meeting held on March 10, 1987, adopting the following portion of an order:

The south one half of the twenty (20) acre parcel of the property located at the intersection of Lake Mary Road and the East 1/2 of Lot 1, and the East 1/2 of Lot 2, of the West 1/2 of Lot 1, of the West 1/2 of Lot 2, of the West 1/2 of Lot 3, of the West 1/2 of Lot 4, of the West 1/2 of Lot 5, of the West 1/2 of Lot 6, of the West 1/2 of Lot 7, of the West 1/2 of Lot 8, of the West 1/2 of Lot 9, of the West 1/2 of Lot 10, of the West 1/2 of Lot 11, of the West 1/2 of Lot 12, of the West 1/2 of Lot 13, of the West 1/2 of Lot 14, of the West 1/2 of Lot 15, of the West 1/2 of Lot 16, of the West 1/2 of Lot 17, of the West 1/2 of Lot 18, of the West 1/2 of Lot 19, of the West 1/2 of Lot 20, of the West 1/2 of Lot 21, of the West 1/2 of Lot 22, of the West 1/2 of Lot 23, of the West 1/2 of Lot 24, of the West 1/2 of Lot 25, of the West 1/2 of Lot 26, of the West 1/2 of Lot 27, of the West 1/2 of Lot 28, of the West 1/2 of Lot 29, of the West 1/2 of Lot 30, of the West 1/2 of Lot 31, of the West 1/2 of Lot 32, of the West 1/2 of Lot 33, of the West 1/2 of Lot 34, of the West 1/2 of Lot 35, of the West 1/2 of Lot 36, of the West 1/2 of Lot 37, of the West 1/2 of Lot 38, of the West 1/2 of Lot 39, of the West 1/2 of Lot 40, of the West 1/2 of Lot 41, of the West 1/2 of Lot 42, of the West 1/2 of Lot 43, of the West 1/2 of Lot 44, of the West 1/2 of Lot 45, of the West 1/2 of Lot 46, of the West 1/2 of Lot 47, of the West 1/2 of Lot 48, of the West 1/2 of Lot 49, of the West 1/2 of Lot 50, of the West 1/2 of Lot 51, of the West 1/2 of Lot 52, of the West 1/2 of Lot 53, of the West 1/2 of Lot 54, of the West 1/2 of Lot 55, of the West 1/2 of Lot 56, of the West 1/2 of Lot 57, of the West 1/2 of Lot 58, of the West 1/2 of Lot 59, of the West 1/2 of Lot 60, of the West 1/2 of Lot 61, of the West 1/2 of Lot 62, of the West 1/2 of Lot 63, of the West 1/2 of Lot 64, of the West 1/2 of Lot 65, of the West 1/2 of Lot 66, of the West 1/2 of Lot 67, of the West 1/2 of Lot 68, of the West 1/2 of Lot 69, of the West 1/2 of Lot 70, of the West 1/2 of Lot 71, of the West 1/2 of Lot 72, of the West 1/2 of Lot 73, of the West 1/2 of Lot 74, of the West 1/2 of Lot 75, of the West 1/2 of Lot 76, of the West 1/2 of Lot 77, of the West 1/2 of Lot 78, of the West 1/2 of Lot 79, of the West 1/2 of Lot 80, of the West 1/2 of Lot 81, of the West 1/2 of Lot 82, of the West 1/2 of Lot 83, of the West 1/2 of Lot 84, of the West 1/2 of Lot 85, of the West 1/2 of Lot 86, of the West 1/2 of Lot 87, of the West 1/2 of Lot 88, of the West 1/2 of Lot 89, of the West 1/2 of Lot 90, of the West 1/2 of Lot 91, of the West 1/2 of Lot 92, of the West 1/2 of Lot 93, of the West 1/2 of Lot 94, of the West 1/2 of Lot 95, of the West 1/2 of Lot 96, of the West 1/2 of Lot 97, of the West 1/2 of Lot 98, of the West 1/2 of Lot 99, of the West 1/2 of Lot 100, of the West 1/2 of Lot 101, of the West 1/2 of Lot 102, of the West 1/2 of Lot 103, of the West 1/2 of Lot 104, of the West 1/2 of Lot 105, of the West 1/2 of Lot 106, of the West 1/2 of Lot 107, of the West 1/2 of Lot 108, of the West 1/2 of Lot 109, of the West 1/2 of Lot 110, of the West 1/2 of Lot 111, of the West 1/2 of Lot 112, of the West 1/2 of Lot 113, of the West 1/2 of Lot 114, of the West 1/2 of Lot 115, of the West 1/2 of Lot 116, of the West 1/2 of Lot 117, of the West 1/2 of Lot 118, of the West 1/2 of Lot 119, of the West 1/2 of Lot 120, of the West 1/2 of Lot 121, of the West 1/2 of Lot 122, of the West 1/2 of Lot 123, of the West 1/2 of Lot 124, of the West 1/2 of Lot 125, of the West 1/2 of Lot 126, of the West 1/2 of Lot 127, of the West 1/2 of Lot 128, of the West 1/2 of Lot 129, of the West 1/2 of Lot 130, of the West 1/2 of Lot 131, of the West 1/2 of Lot 132, of the West 1/2 of Lot 133, of the West 1/2 of Lot 134, of the West 1/2 of Lot 135, of the West 1/2 of Lot 136, of the West 1/2 of Lot 137, of the West 1/2 of Lot 138, of the West 1/2 of Lot 139, of the West 1/2 of Lot 140, of the West 1/2 of Lot 141, of the West 1/2 of Lot 142, of the West 1/2 of Lot 143, of the West 1/2 of Lot 144, of the West 1/2 of Lot 145, of the West 1/2 of Lot 146, of the West 1/2 of Lot 147, of the West 1/2 of Lot 148, of the West 1/2 of Lot 149, of the West 1/2 of Lot 150, of the West 1/2 of Lot 151, of the West 1/2 of Lot 152, of the West 1/2 of Lot 153, of the West 1/2 of Lot 154, of the West 1/2 of Lot 155, of the West 1/2 of Lot 156, of the West 1/2 of Lot 157, of the West 1/2 of Lot 158, of the West 1/2 of Lot 159, of the West 1/2 of Lot 160, of the West 1/2 of Lot 161, of the West 1/2 of Lot 162, of the West 1/2 of Lot 163, of the West 1/2 of Lot 164, of the West 1/2 of Lot 165, of the West 1/2 of Lot 166, of the West 1/2 of Lot 167, of the West 1/2 of Lot 168, of the West 1/2 of Lot 169, of the West 1/2 of Lot 170, of the West 1/2 of Lot 171, of the West 1/2 of Lot 172, of the West 1/2 of Lot 173, of the West 1/2 of Lot 174, of the West 1/2 of Lot 175, of the West 1/2 of Lot 176, of the West 1/2 of Lot 177, of the West 1/2 of Lot 178, of the West 1/2 of Lot 179, of the West 1/2 of Lot 180, of the West 1/2 of Lot 181, of the West 1/2 of Lot 182, of the West 1/2 of Lot 183, of the West 1/2 of Lot 184, of the West 1/2 of Lot 185, of the West 1/2 of Lot 186, of the West 1/2 of Lot 187, of the West 1/2 of Lot 188, of the West 1/2 of Lot 189, of the West 1/2 of Lot 190, of the West 1/2 of Lot 191, of the West 1/2 of Lot 192, of the West 1/2 of Lot 193, of the West 1/2 of Lot 194, of the West 1/2 of Lot 195, of the West 1/2 of Lot 196, of the West 1/2 of Lot 197, of the West 1/2 of Lot 198, of the West 1/2 of Lot 199, of the West 1/2 of Lot 200, of the West 1/2 of Lot 201, of the West 1/2 of Lot 202, of the West 1/2 of Lot 203, of the West 1/2 of Lot 204, of the West 1/2 of Lot 205, of the West 1/2 of Lot 206, of the West 1/2 of Lot 207, of the West 1/2 of Lot 208, of the West 1/2 of Lot 209, of the West 1/2 of Lot 210, of the West 1/2 of Lot 211, of the West 1/2 of Lot 212, of the West 1/2 of Lot 213, of the West 1/2 of Lot 214, of the West 1/2 of Lot 215, of the West 1/2 of Lot 216, of the West 1/2 of Lot 217, of the West 1/2 of Lot 218, of the West 1/2 of Lot 219, of the West 1/2 of Lot 220, of the West 1/2 of Lot 221, of the West 1/2 of Lot 222, of the West 1/2 of Lot 223, of the West 1/2 of Lot 224, of the West 1/2 of Lot 225, of the West 1/2 of Lot 226, of the West 1/2 of Lot 227, of the West 1/2 of Lot 228, of the West 1/2 of Lot 229, of the West 1/2 of Lot 230, of the West 1/2 of Lot 231, of the West 1/2 of Lot 232, of the West 1/2 of Lot 233, of the West 1/2 of Lot 234, of the West 1/2 of Lot 235, of the West 1/2 of Lot 236, of the West 1/2 of Lot 237, of the West 1/2 of Lot 238, of the West 1/2 of Lot 239, of the West 1/2 of Lot 240, of the West 1/2 of Lot 241, of the West 1/2 of Lot 242, of the West 1/2 of Lot 243, of the West 1/2 of Lot 244, of the West 1/2 of Lot 245, of the West 1/2 of Lot 246, of the West 1/2 of Lot 247, of the West 1/2 of Lot 248, of the West 1/2 of Lot 249, of the West 1/2 of Lot 250, of the West 1/2 of Lot 251, of the West 1/2 of Lot 252, of the West 1/2 of Lot 253, of the West 1/2 of Lot 254, of the West 1/2 of Lot 255, of the West 1/2 of Lot 256, of the West 1/2 of Lot 257, of the West 1/2 of Lot 258, of the West 1/2 of Lot 259, of the West 1/2 of Lot 260, of the West 1/2 of Lot 261, of the West 1/2 of Lot 262, of the West 1/2 of Lot 263, of the West 1/2 of Lot 264, of the West 1/2 of Lot 265, of the West 1/2 of Lot 266, of the West 1/2 of Lot 267, of the West 1/2 of Lot 268, of the West 1/2 of Lot 269, of the West 1/2 of Lot 270, of the West 1/2 of Lot 271, of the West 1/2 of Lot 272, of the West 1/2 of Lot 273, of the West 1/2 of Lot 274, of the West 1/2 of Lot 275, of the West 1/2 of Lot 276, of the West 1/2 of Lot 277, of the West 1/2 of Lot 278, of the West 1/2 of Lot 279, of the West 1/2 of Lot 280, of the West 1/2 of Lot 281, of the West 1/2 of Lot 282, of the West 1/2 of Lot 283, of the West 1/2 of Lot 284, of the West 1/2 of Lot 285, of the West 1/2 of Lot 286, of the West 1/2 of Lot 287, of the West 1/2 of Lot 288, of the West 1/2 of Lot 289, of the West 1/2 of Lot 290, of the West 1/2 of Lot 291, of the West 1/2 of Lot 292, of the West 1/2 of Lot 293, of the West 1

People

IN BRIEF

Fishry open to public

SANFORD — On Saturday, Feb. 15, the United Methodist Men of the First United Methodist Church, Sanford, will hold a fish dinner and fund-raiser for men, women and youth to attend spiritual retreats.

The menu includes fried catfish filets (or baked ham), hush puppies, grits, coleslaw and fruit cobbler. Also planned are a bake sale, produce sale and "maybe games," according to Ashby Jones.

The public is invited to the event to be held from 4 to 7 p.m. in the church fellowship hall. Tickets are \$5 each and may be purchased at the door or from church members.

CALENDAR

Optimist Club meets weekly

The Sanford Optimist Club meets every Wednesday at noon at the Colonial Room in downtown Sanford. Visitors are welcome. Call 323-2194 or 322-0298.

Kiwanis Club meets Wednesday

The Kiwanis Club of Sanford holds its noon luncheon meetings every Wednesday at the Sanford Civic Center, North Sanford Avenue at the lakefront. Visiting Kiwanians are welcome. For information call Walt Smith, 323-5068.

Dancing for seniors

The Over 50 Dance Club dance is held every Wednesday, from 2:30 - 4:30 p.m. at the Sanford Civic Center. Live music by the Deltonians 11-piece band. Donation \$2.00.

Recovery Inc. meets in Sanford

Recovery Inc., a self-help mental health organization for people who suffer from panic attacks, depression, fears and general nervous symptoms, meets every Wednesday, at 7:30 p.m., at Sanford Meadows Seventh-Day Adventist Church, 5615 N. County Road 427, Sanford. Those interested are invited to attend. For information, call 660-2003.

TOPS meets in Longwood, Apopka

A local chapter of TOPS (Take off Pounds Sensibly) meets every Wednesday at 6:30 p.m., in the auditorium of West Lake Hospital, 565 W. S.R. 434, Longwood. Weighing begins at 5:30 p.m. The first meeting is free. For information, call 889-8485 or 1-800-932-8677.

A morning meeting is held every Wednesday, at 9:30, at Lakeview Christian Church, 1400 Bear Lake Road, Apopka. For information, call 293-5048.

Volunteer of the Week

He makes volunteering a fun thing

By JUDAN WENNER
Herald Staff Writer

LAKE MARY — Lake Mary resident, Colin Green, has found a way to socialize, be productive and enjoy some fun times, all for a good cause. For the last six months, Green and his wife have volunteered with Habitat for Humanity of Seminole County at the thrift shop operating in the Old Zayre Plaza.

According to a recent flyer, "through volunteer labor and tax-deductible donations of money and materials, Habitat builds and rehabilitates simple, decent houses with the help of the homeowner (partner) families. Habitat houses are sold to partner families at no profit, financed with affordable, no-interest loans. The homeowners' monthly mortgage payments go into a revolving fund for Humanity that is used to build more houses. Habitat is not a give-away program. In addition to a down payment and the monthly mortgage payments, each homeowner family invests hundreds of hours of their own labor - sweat equity - into the building of their house and the houses of others."

This concept was cited as important to Green because as he put it, "It's not a give-away. People have to help themselves. I want to help people provided that they want to help themselves."

Green began his work at Habitat after "retiring last January. I did a lot of fishing and gardening but come fall I was looking for something else to do. I thought I'd like to pound nails but the two projects in Sanford were winding down."

He continued by saying, "Mary in the Thrift Shop told me they desperately needed help in the store so I decided to help there."



Colin Green volunteers in the Thrift Shop of Habitat for Humanity.

Now, Green works Wednesday through Saturday, some four days a week for five to six hours a day. He whistles and jokes with other volunteers as they work to help others get a much desired home.

"It's a good cause," said Green. "There are good people that work here. We try to make it a fun thing. I work anywhere from loading to unloading, sweeping or mopping floors, taking things home and fixing them, stocking and cleaning shelves to everything."

To encourage others to volunteer, Green told a story about a man who was encouraged to enlist in the Army but felt he couldn't help and that a big

mistake was being made. The man had no hands but was told there was a job he could do. He had a physical and he was again told there would be no problem with him participating in the Army. He was given a summons to report to boot camp. He still insisted that the Army had made a terrible mistake. They proceeded to take him to a blind man that was peeling potatoes and told him that he could direct the man where to throw the peels.

Green said he used this illustration to show that "everybody can do something to help, even with disabilities. He added that a handicapped gentleman recently assisted Habitat by pricing items while he was

confined to a wheelchair. "The secret is that we need more volunteers," he said. "You can get burned out on volunteering. You are frightened to take any time off because you aren't sure what condition things will be in when you return. If we had more volunteers people could work less hours and have a little free time and not feel guilty about not helping. Anybody volunteering to do anything would help."

Those interested in volunteering should call Habitat for Humanity at 328-9717.

Green and his wife, Jill, have been married for 37 years. They have two children, Michael and Susan and four grandchildren.

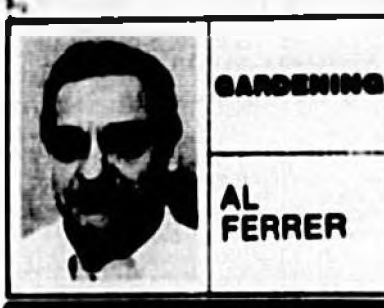
All you ever wanted to know about turf weed control

A weed is simply a plant growing out of place. When most people think about weed control, they usually think about chemical weed control, but the best method to control weeds is by proper management practices that result in a dense, healthy turf. A dense turf will complete successfully with weed seedlings for sunlight and will leave very little space for weed invasion. One of the most critical decisions that a homeowner has to make is the selection of the proper turf to plant. Tolerance to shade, is an important factor in the selection of the turfgrass since many grasses under shade conditions tend to grow weakly and therefore become susceptible to weed invasion. To produce a healthy turf, a timely and adequate fertilization, irrigation, mowing and pest control programs must be maintained.

Wood groups: Weeds that complete their life cycles in

one season are called annuals, those completing their cycles in two seasons are called biennials, and those completing their cycles in more than two seasons are called perennials. Annuals that have a life cycle from spring to fall are called summer annuals and those that have a cycle from fall to spring are called winter annuals. The most difficult weeds to control belong to the summer annual group.

Types of weeds: There are three basic types of weeds, broadleaves, grasses, and sedges. Broadleaves are dicotyledonous plants, like white clover or Florida pusley, with net-like veins in their leaves, that usually produce flowers. Grasses are monocotyledonous plants, like sandspur or goosegrass, with hollow, rounded stems with nodes, and parallel veins in their leaves. Sedges are monocotyledonous plants, like yellow nutsedge or globe sedge, with solid, triangular stems,



GARDENING

AL FERRER

and parallel veins in their leaves.

Herbicide types: A herbicide is any chemical which kills a plant. There are many kinds of herbicides and it is important to know how to use them in order to successfully control weeds. A herbicide may be selective if it controls certain species without affecting other plants. Most herbicides used to control weeds in turfgrasses belong to this group of chemicals. A nonselective herbicide will kill any green plant. A contact herbicide will affect only the

plant tissues that become in contact with the chemical. A systemic herbicide will be translocated in the plant's vascular system. Systemic herbicides kill plants over a period of days.

Preemergence herbicides: These chemicals are applied after the germination of the weed seeds. As a general rule, the younger the seedling, the better the control that can be obtained with the herbicide. The effectiveness of the

herbicide decreases as weeks grow, or the soil moisture is low. Do not mow the lawn until the chemical has time to work. The use of a particular herbicide will depend on the type of weed present. In St. Augustinegrass, crabgrasses are controlled with Aulam, while sedges are controlled with Bentazon.

For broadleaves control Atrazine is also recommended. In Bahiagrass, 2,4 D and similar herbicides are used to control

broadleaves. This herbicide although labeled for use in St. Augustinegrass, has caused serious damages to this grass, especially during hot weather. Read the labels carefully. It is the law and can save your lawn.

(Al Ferrer is Seminole County Urban Horticulturist. Inquiries may be directed to him at the Cooperative Extension Service, 280 W. County Home Road, Sanford, FL 32773 or phone 323-2500, Ext. 5888.

A card is always in good taste

DEAR ABBY: After my father died unexpectedly, I didn't know what to do when my parents' next wedding anniversary came along. I was young — under 30 — and was not aware of the proper procedure.

Should I buy my mother a gift, as I had always done for them in the past? Would it be better not to even mention the date to my mother? As I recall, I invited my mother for dinner, no gift, and only a mention of what day it was when we finished dinner. Now I feel I did the right thing. She knew I remembered, and she was not alone for dinner.

kinds of men's domestic and foreign. You're in good company!

(Problems? Write to Dear Abby. For a personal, unpublished reply, send a self-addressed, stamped envelope to Dear Abby, P.O. Box 69440, Los Angeles, Calif. 90069. All correspondence is confidential.)

ADVICE

ABIGAIL VAN BUREN

| News | Local | National | International | Special | Opinion | Editorial | Cartoon | Classified | Real Estate | Automotive | Business | Health | Education | Arts | Sports | Entertainment | Travel | Weather | Calendar |
|---------|----------|-------------|------------------|------------|------------|--------------|------------|---------------|----------------|---------------|-------------|-----------|--------------|---------|-----------|------------------|-----------|------------|-------------|
| News 11 | Local 11 | National 11 | International 11 | Special 11 | Opinion 11 | Editorial 11 | Cartoon 11 | Classified 11 | Real Estate 11 | Automotive 11 | Business 11 | Health 11 | Education 11 | Arts 11 | Sports 11 | Entertainment 11 | Travel 11 | Weather 11 | Calendar 11 |
| News 12 | Local 12 | National 12 | International 12 | Special 12 | Opinion 12 | Editorial 12 | Cartoon 12 | Classified 12 | Real Estate 12 | Automotive 12 | Business 12 | Health 12 | Education 12 | Arts 12 | Sports 12 | Entertainment 12 | Travel 12 | Weather 12 | Calendar 12 |
| News 13 | Local 13 | National 13 | International 13 | Special 13 | Opinion 13 | Editorial 13 | Cartoon 13 | Classified 13 | Real Estate 13 | Automotive 13 | Business 13 | Health 13 | Education 13 | Arts 13 | Sports 13 | Entertainment 13 | Travel 13 | Weather 13 | Calendar 13 |
| News 14 | Local 14 | National 14 | International 14 | Special 14 | Opinion 14 | Editorial 14 | Cartoon 14 | Classified 14 | Real Estate 14 | Automotive 14 | Business 14 | Health 14 | Education 14 | Arts 14 | Sports 14 | Entertainment 14 | Travel 14 | Weather 14 | Calendar 14 |
| News 15 | Local 15 | National 15 | International 15 | Special 15 | Opinion 15 | Editorial 15 | Cartoon 15 | Classified 15 | Real Estate 15 | Automotive 15 | Business 15 | Health 15 | Education 15 | Arts 15 | Sports 15 | Entertainment 15 | Travel 15 | Weather 15 | Calendar 15 |
| News 16 | Local 16 | National 16 | International 16 | Special 16 | Opinion 16 | Editorial 16 | Cartoon 16 | Classified 16 | Real Estate 16 | Automotive 16 | Business 16 | Health 16 | Education 16 | Arts 16 | Sports 16 | Entertainment 16 | Travel 16 | Weather 16 | Calendar 16 |
| News 17 | Local 17 | National 17 | International 17 | Special 17 | Opinion 17 | Editorial 17 | Cartoon 17 | Classified 17 | Real Estate 17 | Automotive 17 | Business 17 | Health 17 | Education 17 | Arts 17 | Sports 17 | Entertainment 17 | Travel 17 | Weather 17 | Calendar 17 |
| News 18 | Local 18 | National 18 | International 18 | Special 18 | Opinion 18 | Editorial 18 | Cartoon 18 | Classified 18 | Real Estate 18 | Automotive 18 | Business 18 | Health 18 | Education 18 | Arts 18 | Sports 18 | Entertainment 18 | Travel 18 | Weather 18 | Calendar 18 |
| News 19 | Local 19 | National 19 | International 19 | Special 19 | Opinion 19 | Editorial 19 | Cartoon 19 | Classified 19 | Real Estate 19 | Automotive 19 | Business 19 | Health 19 | Education 19 | Arts 19 | Sports 19 | Entertainment 19 | Travel 19 | Weather 19 | Calendar 19 |
| News 20 | Local 20 | National 20 | International 20 | Special 20 | Opinion 20 | Editorial 20 | Cartoon 20 | Classified 20 | Real Estate 20 | Automotive 20 | Business 20 | Health 20 | Education 20 | Arts 20 | Sports 20 | Entertainment 20 | Travel 20 | Weather 20 | Calendar 20 |

BUSINESS DIRECTOR

CHANG'S CAR CARE

COMPLETE AUTO REPAIRS
Since 1961

- Electrical Repairs
- Air Conditioning
- Starters/Alternators
- Tires & Batteries
- Carburetor
- Brakes Service
- Fuel Injection
- Computer Diagnostics
- Tune-Ups
- CV Joints & Axles
- Engine Repair
- Cooling System

Look For This Sign!

Oil Filter Change

Every 3,000 miles, have us change your oil and filter with quality NAPA products.

\$17.95

Includes up to five quarts of NAPA oil and NAPA Silver oil filter.

2714 S. Orlando Dr.
(Wey. 17-82) Sanford
CALL FOR APPT: (407) 322-0884

DEAR SAD WIDOW: Please accept my sympathy on the loss of your beloved husband. There is much to be learned from your letter about the value of reaching out to others.

CONFIDENTIAL TO "LOVES PEOPLE" IN LOUISVILLE: Miss West once said, "I only like two

Extra Points...

Russ White

Herald Staff Writer



County kids prove they are straight shooters

For the moment forget believing in the Magic - forget the NBA hype, gripe and tripe. Let's hear it for the Kids in the Neighborhood. The girls who play basketball for Lake Mary High and the boys who play for Oviedo High.

Chairman Randy Morris of the Board of Seminole County Commissioners told us he is working on a resolution to recognize the coaches and players from the two schools who did the county so proud. There was insufficient time to invite everyone to today's meeting but expect a BCC salute in a couple of weeks.

We should be well aware that youngsters play basketball for keeps in Florida - from the Panhandle to Keys, the Treasure Coast to the Gold Coast. Girls and boys from the Sunshine State who know how to shoot straight.

Defying stiff odds, Seminole County scored a sweet double having a girls and a boys team in the 76th annual Florida High School Activities Association Basketball Finals in Lakeland last weekend. The Kids in the Neighborhood got there by playing good basketball game after game from November through March.

That the Lake Mary girls lost their championship game to Pensacola, 52-49, and that the Oviedo boys lost theirs to Miami High, 83-50, made for a tough Saturday night at Lakeland Center but should in no way diminish our respect and gratitude for what these youngsters accomplished on the whole.

Lake Mary's girls won 29 of 31 games. Oviedo's boys won 28 of 32 but numbers - even as impressive as these - don't tell the whole story. Never have, never will. There's a lot more to basketball than scores and records. Instead of dwelling on cold numbers, let's try to appreciate the dedication of all these scholastic players. We're not talking about pampered millionaires here - these are the Kids in the Neighborhood.

There was huge drama - big time emotion Friday and Saturday night at Lakeland. Remember the movie, "Hoosiers." Well, the weekend would make for just as stirring a motion picture show.

A close up please for Lake Mary's Stephanie Dale. Seconds left to play in the Saturday night championship game. Lake Mary, down by three points to Pensacola, can't get the ball into play and calls time out.

Coach Carl Brown draws up a play for a last shot.

Play resumes, the ball is tossed in and Dale fires a three-point attempt that almost everyone senses is going in the hoop.

Her dad, Sanford Mayor Larry Dale, is among those who are up and pleading that the ball drop through. Larry Dale, who lovingly used to encourage and help his daughter hone her basketball skills on their outdoor hoop. "Learn to shoot with your left hand and your right," he told her. "Practice. Left and right."

Good try, Stephanie Dale. Good try. "It was the shot we wanted," said Coach Carl Brown. "Stephanie got the ball and had a good look. I thought it was going in."

Need more drama?

Consider the Oviedo players, who went out to face the formidable Miami Senior Stingarees without Coach Ed Kerahner, who lay in a bed at Lakeland Regional Medical Center.

Kerahner, 58, was injured Friday night when a Miami Killian player accidentally ran into him during Oviedo's semi-final victory. Kerahner made it through that game but began to get dizzy afterward when the team went to eat at a restaurant. Turned out that Kerahner (Hoosier born and bred) broke his hip in a couple of places and lost considerable blood.

This put assistant coach John Howell in charge in the finals. "That was a big jolt to those kids," Larry Dale said. "They were hurting for sure. I tell you, I was proud of them - just as I was for the Lake Mary girls team. We're talking about some neat kids who made us very proud."

The Kids from the Neighborhood. Bless them all.

SAC comes up silver

Last-second "three" won't fall for Lake Mary

By JEFF BERLINCKE Herald Staff Writer

LAKELAND — As Stephanie Dale's last second attempt to tie the state finals for Lake Mary arched through the Lakeland Center Saturday night, it was easy to remember how far the Lady Rams have come this season.

Lake Mary trailed by three points and had one second to get a shot off to send the game against Pensacola into overtime.

As the ball was on its way, it would be easy to remember the 27 wins and state number two ranking. The brilliant play of Lauren Bradley and Ashlee Ballance and the coming-of-age of Mary Leah Sutton.

Dale got the shot off and it missed. Barely.

As a result, Lake Mary went home for the second time in five years with a loss in the state championship, 52-49.

"I'm so proud of what they have done all season long," said coach Carl Brown. "They gave me everything they had and they always enjoyed being around each other. Stephanie got a good look at the shot but we'll wake up and life will go on."

What may hurt the most is that Lake Mary blew a seven-point halftime lead. They came out

Table with 2 columns: Team Name and Score. Includes Lake Mary (50), Pensacola (52), and other teams.

strong early as Bradley and her soft jump shot made all the difference and Ballance consistently was beating the Pensacola press.

Things were working against Lake Mary, however. Both Bradley and Sutton got into foul trouble and Brown had them seated as halftime approached.

Sixteen minutes from a state title, everything started to fall apart. First, Pensacola's Donette Snow singlehandedly took control of the game, scoring seven straight points to tie it. Then, after Bradley hit from the outside, Snow scored four more and Lake Mary never led again.

"We came out and played a good first half," Brown said. "We worked hard, we just couldn't do anything in the third quarter."

By the fourth quarter, it got worse. Both

Bradley and Sutton picked up their fourth foul and Pensacola ran off 11 straight to open up the final period.

Then Sutton brought Lake Mary back. She scored seven quick points despite her foul troubles and the Lady Rams whittled at the lead.

Down by five with under a minute to play, Maggie Reedy hit from the outside. Pensacola got the two points back but Dale scored on a layup to cut the lead to three with time winding down.

Pensacola made one of its few second half mistakes and Lake Mary forced a turnover with a second left on the clock.

Down by three, Brown need one of his sharpshooters and called a timeout. Brown said he called for Dale, Ballance or Becky Pedro to take the last shot but it fell just short, on the but grazing the rim.

The loss was especially hard on Reedy who was certainly not the only Lake Mary player, parent or fan in tears after the game. Reedy is the only senior starter on the Rams and she played with a severely injured wrist.

"I'll never forget the memories we shared," Reedy said after it was over.

Next season, the rest of the lineup is back including Pedro off the bench. It wouldn't be surprising to see Lake Mary start off next season in the top spot with so much firepower returning.

Third period dooms Oviedo

By JEFF BERLINCKE Herald Staff Writer

LAKELAND — Someday, the members of the 1997 Oviedo basketball team will look back and smile on the season just completed.

They will remember their unbeaten march through the Seminole Athletic Conference, their romp through the districts and regionals and their win in Friday night's Class 6A state semi-finals in the George Jenkins Arena at Lakeland Center.

On Saturday, however, those memories were forgotten. A devastated Lions team trudged off the court after losing the state finals, 83-50 to Miami High which won the title for an unheard of 17th time.

The Lions didn't even have their coach to console them. Ed Kerahner, in his first year with Oviedo, suffered an injury Friday when he was run over during the semi-finals and landed on his hip late in the fourth quarter.

Kerahner said he had hip replacement surgery eight years ago and landed on his incision.

He remained on the bench Friday but suffered dizzy spells on his team's return after the game and was hospitalized. It turned out that his hip was broken in two places.

Oviedo assistant John Howell

See State, Page 2B

Table with 2 columns: Team Name and Score. Includes Oviedo (50), Miami (83), and other teams.

SANFORD REC. HOLDS OPENING CEREMONIES



A very large crowd was on hand Saturday morning (top) as the Sanford Recreation Department held its Opening Day ceremonies for its Babe Ruth Baseball and Softball League for players ages 4-12 at Ft. Mellon Park's Roy Hoiler Youth Field. In

the bottom of photo, Sanford City Commissioner White Eklstein throws out a first ball, while fellow commissioner's Brady Leppard (left) and Kerry Lyons (right) wait their turn while the previously introduced players and their coaches look on.

Quartet posts baseball wins; Trio of softball teams fall

By TONY BOGGS Herald Correspondent

OVIEDO — How a team responds to a difficult loss is one of the defining events in the season-long process of developing a collective identity.

For the Oviedo High School baseball team, there may not be a more difficult loss to have to accept than Friday night's 4-3 setback at the hands of the Lake Brantley Patriots. Even though it was just the Lions' 10th game of the season, the reasons it was a heartbreaker were many.

It wasn't bad enough that it was a loss in a Class 6A-District 4 and Seminole Athletic Conference game. The Lions also were victims of a no-hitter and it came on their home field. Not only that, but Oviedo led 2-1 going into the

seventh inning and saw the win slip away. Afterwards, the Oviedo side was emotionally and physically spent.

Twenty-four hours later, the Lions were back on Mikler Field to face the visiting Sebring High School Blue Streaks. And even though it was a non-conference and non-district game, it was Oviedo's official home opener for the 1997 season (complete with barbecue), the Blue Streak are coached by Rick Hitt, brother of Lion assistant coach Harold Hitt, and the OHS boys' basketball team was playing in the Class 6A state championship in Lakeland.

The Lions (8-3) responded with a 12-4 win over the Blue Streaks (3-5).

"I'm proud of the way they responded," said Oviedo coach Kenne Brown. "We were flat during

pregame, but that was to be expected following Friday night's game. When they (the Blue Streaks) went up 2-0 (on Jay Belflower's two-run home run), I was concerned. But we answered right back."

Led by Troy Boutwell (4-for-4 with two runs scored) and Scott Ferrell (3-for-5 with a double, two runs, and four RBI), the Lions came back with five runs in the bottom of the second inning and six more in the third.

"The guys played a great game against Lake Brantley and lost," said Brown. "I wasn't sure how they'd come out today (against Sebring). They showed some heart. They came back from a tough loss and did what they had to do. Most of them would have rather been in Lakeland at the state basketball finals - I would have rather been

in Lakeland - but we had a game to play. And we played well."

Also contributing to the Lions' attack were Andy Neufeld (3-for-3, with a triple, three runs, and two RBI), Jay McFarlane (2-for-4 with a bases-loaded double), Jeremy Frost (1-for-3 with a double), Justin Holmes (1-for-2, two runs, RBI), and Jorge Hernandez (two runs scored).

Kenny Birch pitched six innings for his second win of the season, allowing four runs (all earned) on six hits, striking out six and walking three.

Belflower was two-for-three with a two-run home run for Sebring.

Oviedo hosts the Lake Mary Rams in a conference and district game this Wednesday night See Progs, Page 2B

STATS & STANDINGS

College Baseball

□ University of Maine vs. State University at Conrad Park, Boland, 7 p.m.

JUCO Baseball

□ Seminole Community College vs. Valencia Community College at Orlando, 3 p.m.

Prep Baseball

□ Lake Brantley at Blaine, 7 p.m.
□ Lake Howell at Winter Park, 7 p.m.
□ Lyman at Dr. Phillips, 3:30 p.m.

National Basketball Association

□ Orlando Magic vs. Denver Nuggets at MetLife Arena, 9 p.m.

College Golf

□ Women, University of Central Florida at Peggy Kirk Ball Invitational, Winter Park, TBA

Prep Boys' Golf

□ Lake Mary vs. Oviedo at Blaine, 3:30 p.m.
□ Seminole vs. Lake Brantley at Sabal Point, 3:30 p.m.

Prep Girls' Golf

□ Oviedo vs. Lake Mary at Sabal Point, 3:30 p.m.

International Hockey League

□ Grand Rapids Griffins vs. Orlando Solar Bears at Orlando Arena, 7 p.m.

Prep Lacrosse

□ Oviedo at Lake Mary, 7 p.m.

College Softball

□ Rebel Games at West Orange Girls Club, Winter Garden and Walt Disney World Softball Complex, TBA

JUCO Softball

□ Seminole Community College vs. Polk Community College at Winter Haven, doubleheader, 5 p.m.

Prep Softball

□ Lake Mary vs. Oviedo at Oviedo Sports Complex, 6 p.m.
□ Lyman vs. Lake Howell at Winter Springs High School, 4 p.m.
□ Seminole at Lake Brantley, 6 p.m.

College Tennis

□ Women, University of Valencola College (Florida) at University of Central Florida, 10 a.m.
□ Men, East Carolina University at University of

Central Florida, 1 p.m.

Prep Tennis

□ Girls, Oviedo at Lake Mary, 3:30 p.m.

Offense not enough as SCC nine drops three

From Staff Reports

SANFORD — The Seminole Community College baseball team did a good job with its offense, but the same could not be said for its pitching and defense as the Raiders dropped three games this past weekend.

Seminole Community College (4-15) came up with 32 hits, but it was not enough to overcome its pitchers (which gave up 44 hits) and its defense (which committed 10 errors).

On Friday afternoon, the Raiders led 1-0 until Polk Community College from Winter Haven came up with six runs in the third inning and led 8-1 after four innings. SCC tried to mount a comeback, cutting the lead to 8-5 after six innings. But the local squad would get no closer as the Vikings (15-9) won 11-5 at Raider Field.

On Saturday, the Raiders led 1-0 in the first game, but it was short-lived as Santa Fe Community College came back with two runs in the bottom of the second inning. SCC answered again with a run in the top of the third inning to tie the game at 2-2, but the Raiders could not hang on as SFCC came up with two more runs in the bottom of the fourth inning and went on to win 13-5 in a Mid-Florida Conference battle at Gainesville.

The second game was not even close as the Saints (11-6-2, 3-0 in the M-FC) built a 6-0 lead on the way to an 11-1, eight-inning victory.

SCC will play another conference game in Orlando today against backyard rival Valencia Community College, coached by former Croome High School and Oviedo High School coach Howard Mabry, starting at 3 p.m.

The Raiders will then return home for a doubleheader against Hibbing Community College from Maine starting at 1 p.m. on Wednesday afternoon at Raider Field, and a single game with Western New England College from Massachusetts on Thursday at 3 p.m., before traveling to Winter Haven on Friday for a rematch with Polk Community College at 3 p.m.

Leading the SCC attack on Friday were Scott Taylor (two-for-three) and Mainland's Ryan Wilkey and Lake Mary's Mike Baky (both two-for-four). Former Seminole High School star Alexis Acosta had a double and a single for the Polk Community College Vikings.

Providing the offense for the Raiders in the first game on Saturday were Jesse DeBrewer (three-for-five, one run scored), Marcel Torres (two-for-four with a home run and a double, two runs scored, two RBI), Spruce Creek's Mike Schmidt (two-for-five with a double, one RBI), Eric Kindel (two-for-four, one run scored, one RBI) and Baky (two-for-four, one run scored).

Also hitting were Casey Merritt (one-for-four) and Jay Grevers (one-for-five).

IN BRIEF

Recreation Volleyball results

SANFORD — Kathy's Baby Shop wrapped up the regular season championship in the A League as it ran its record to a perfect 44-0 in the Sanford Recreation Department Polar Bear Recreational Volleyball League at Sanford Middle School's Dan Pelham Gymnasium.

The results for Monday night were:
A League — Kathy's Baby Shop (5-0), Longwood Teen Center and Sanford Church of God (both 3-2), Hopkins House (3-3) and Beer:30 (both 2-3) and Westview Baptist Church (1-5).
B League — YKnots, C.E.S. and Unknowns (all 5-1) and Westview Baptist Church (5-3).

Toucan Willie pulls one out

OVIEDO — Toucan Willie came up with

seven runs in the seventh inning to pull out a 16-11 victory over Cross Club in the Oviedo Recreation Department Men's Slowpitch Softball League at the Oviedo Sports Complex.

Toucan Willie (2-1) will play Froggers II at 9 p.m. this Thursday.

Doing the hitting for the winner's were Billy Stripp (3-for-4, home run, two runs, four RBI), Joe Brandon and Toby Kessell (both 3-for-4, two runs, two RBI), Ronnie Gardner (2-for-4, run, two RBI), Chris Kenzinger (2-for-3, two runs, RBI), Kenny Tuttle (2-for-4, eight put outs), Lance Alney (hit, two runs), Rick Tribit (hit, run, RBI), Chris Tulip (hit, run) and Rob Dinkedecker (hit, run, two RBI).

SYFA meeting

SANFORD — The Sanford Youth Football Association will hold a board and coaches meeting on Sunday, March 16th at 4 p.m. at the Seminole Community College Health and Physical Education Center.

All interested people who want to coach football or cheerleading should attend.

Raider softball team roughed up by Tallahassee C.C. squad

From Staff Reports

LAKE MARY — The Seminole Community College softball team found it was playing a road game instead of playing at its home-away-from-home Friday night as visiting Tallahassee Community College throttled the Raiders 11-4 at Lake Mary High School.

The Eagles (14-9) took a 9-0 lead before SCC could plate a run in the bottom of the fourth inning. TCC also counted six extra base hits among the 15 safeties it collected in the contest.

Providing the offense for the Raiders (10-12) were Oviedo's Michelle Field (three-for-four, three RBI), DeLoon's Erin Mat-

lab (two-for-two, one RBI), Seth Dugny (two-for-three), JoDee Wessner (two-for-four, one run scored), Oviedo's Carrie McAuliffe (two runs scored) and Sanford's Dawn Chett (one run scored).

SCC will travel to Winter Haven today for a non-conference doubleheader against Polk Community College starting at 5 p.m.

State

Continued from Page 1B

took the team for its final game but the loss of Kershner was evident as the Lions came out without the same look they had prior to the semi-finals.

"The most difficult thing was that we had to block it out and come here to play," said center Ben Knapp.

Beating Miami would have been an awesome task even without the hardship suffered by Oviedo.

With it, Oviedo never had a chance. Miami came out strong early and ran up a 35-14 first quarter lead. Oviedo cut the deficit to seven at the half but that's about when things started

to get ugly. Scored early and often in the third quarter and dominated the period 38-6 and it was never close again as the Stingeros slammed and jammed their way to a trophy.

Knapp led the Lions with 13 points and was the only player in double figures. Jason Dangerfield, the Arkansas transfer who was Friday night's hero, scored nine points and fellow senior Darren Rogers, Oviedo's leading scorer all season, had seven.

Rogers, Dangerfield and Aaron Thomas, the core of the starting lineup, all graduate this season leaving only Knapp and Ben Fowler as returning starters.

VIRGIL H. SANDERS

| | |
|-------------------------------|--------------------|
| Polk Community College | 00 00 00 - 11 10 0 |
| Seminole Community College | 00 00 00 - 5 10 1 |
| Sanford Community College | 00 00 00 - 10 10 1 |
| St. Johns River State College | 00 00 00 - 10 10 1 |
| St. Petersburg College | 00 00 00 - 10 10 1 |
| St. Petersburg College | 00 00 00 - 10 10 1 |
| St. Petersburg College | 00 00 00 - 10 10 1 |
| St. Petersburg College | 00 00 00 - 10 10 1 |
| St. Petersburg College | 00 00 00 - 10 10 1 |
| St. Petersburg College | 00 00 00 - 10 10 1 |

SATURDAY

SANITIS 10-11, SANDERS 1-1

GAME ONE

| | |
|---------------------------------|--------------------|
| Seminole Community College | 00 00 00 - 10 10 1 |
| South Florida Community College | 00 00 00 - 10 10 1 |
| St. Johns River State College | 00 00 00 - 10 10 1 |
| St. Petersburg College | 00 00 00 - 10 10 1 |
| St. Petersburg College | 00 00 00 - 10 10 1 |
| St. Petersburg College | 00 00 00 - 10 10 1 |
| St. Petersburg College | 00 00 00 - 10 10 1 |
| St. Petersburg College | 00 00 00 - 10 10 1 |
| St. Petersburg College | 00 00 00 - 10 10 1 |
| St. Petersburg College | 00 00 00 - 10 10 1 |

GAME TWO

| | |
|---------------------------------|--------------------|
| Seminole Community College | 00 00 00 - 10 10 1 |
| South Florida Community College | 00 00 00 - 10 10 1 |
| St. Johns River State College | 00 00 00 - 10 10 1 |
| St. Petersburg College | 00 00 00 - 10 10 1 |
| St. Petersburg College | 00 00 00 - 10 10 1 |
| St. Petersburg College | 00 00 00 - 10 10 1 |
| St. Petersburg College | 00 00 00 - 10 10 1 |
| St. Petersburg College | 00 00 00 - 10 10 1 |
| St. Petersburg College | 00 00 00 - 10 10 1 |
| St. Petersburg College | 00 00 00 - 10 10 1 |

Preps

Continued from Page 1B

at Mikler Field at 7 p.m.

BOONVILLE BLANK WOLVES
LONGWOOD — Juniors Lance Odum and Todd Radcliff led the way as the Lyman Greyhounds whitewashed the visiting DeLoon Wolves 8-0 at Lyman High School on Saturday.

Odum had a four-batter and Radcliff hit a home run and drove in three runs.

Also hitting for the Greyhounds were Dustin Owen and Jose Torres (both 2-for-4) Trevor Dixon and Tyler Carr (one double and one RBI each) and Kevin Nease (two RBI).

PATRIOTS WIN NINTH GAME

ALAMONTE SPRINGS — Tanner Brock ran his record to 3-0 with help from Greg Lee and Chad Hall west three-for-four as Lake Brantley bested Boca Raton-Olympic Heights 5-2 at Lake Brantley High School Saturday night.

Olympic Heights (3-4) took a 1-0 lead in the top of the second inning, but the Patriots (9-1) answered with a run in the bottom of the second inning and two runs in each of the third and fourth innings.

In addition to Hall, Danny Hunt and Boeshko had one RBI each for Lake Brantley.

RAIS WIP SILVER HAWES

WINTER SPRINGS — Aaron Black hurled a four-batter and Lake Mary turned a close game into a rout with six runs in the seventh inning as the Rams topped Lake Howell 9-3 in a Class 6A-District 4 and Seminole Athletic Conference game at Winter Springs High School Friday afternoon.

Lake Mary (6-3) scored three runs in the top of the third inning and the Silver Hawks (4-5) got a run back in the bottom of the third.

The score remained 3-1 until the seventh when

the Rams tacked on their final six runs and Lake Howell got its final run.

Leading the Lake Mary offense were Jimmy Smith (3-for-4, triple), Brad Kinger (3-for-5, double) and Drew Young (2-for-4).

Lemieux had a triple for the Silver Hawks, while Taylor was two-for-three.

The Rams will be at Oviedo at 7 p.m. on Wednesday.

SOFTBALL

TRIBES WHITWASHED

SANFORD — Satellite still outlast Seminole 6-5, but the Scorpions took advantage of six Fighting Seminoles errors to blank the Tribes 7-0 in Class 5A-District 6 game at the Seminole High School Softball Complex on Friday.

Satellite (5-1) broke the game open with four runs in the fourth inning.

Jennifer Wilson, who saw her pitching record fall to 2-2, was two-for-four at the plate, while Lindsey Keeler had a double.

The Tribes (5-3) will return to Seminole Athletic Conference action this evening, taking on Lake Brantley at 6 p.m. in Altamonte Springs.

HAWES EDGE SANITS

GOLDENROD — Rogers tossed a three-batter and Maglore was two-for-two as Lake Howell (5-4) handed Trinity Prep (5-1) its first loss of the season 1-0.

The Silver Hawks capped the game's lone run in the fourth inning.

LYMAN NO-HIT

ORLANDO — Wood (2-1) hurled a no-hitter as Colonial (2-2) whipped Lyman (2-6) 9-0 in Orlando on Friday.

LEANS IS BLUE STRIKES

Sanford, Oviedo, Blaine, Winter Park, and Winter Springs.

CLASSIFIED ADS

Seminole 407/322-2611 Orlando - Winter Park 407/631-9093

| CLASSIFIED DEPT. HOURS | PRIVATE PARTY RATES |
|--------------------------|--|
| 8:00 A.M. - 5:00 P.M. | 14 consecutive days.....\$50 a line |
| Monday thru | 7 consecutive days.....\$40 a line |
| Friday | 3 consecutive days.....\$25 a line |
| Closed Saturday & Sunday | 1 day.....\$12 a line |
| | Rates are per line, based on 3 lines & 3 lines minimum |

NOW ACCEPTING  

Scheduling may include certain hours of the week or an additional day. Classified ads are not accepted for less than 14 days. Copy must be complete. Payment in full is required. *Commercial frequency rates are available.

DEADLINES Tuesday thru Friday 12 Noon The Day Before Publication Saturday 12 Noon Friday

ADJUSTMENTS AND CREDITS: In the event of an error in an ad, the Sanford Herald will be responsible for the first insertion only and only to the extent of the cost of that insertion. Please check your ad for accuracy the first day it runs.

11—Home Health Care

Home Health Care Services, Inc. 1100 N. Orange Ave., Suite 100, Orlando, FL 32801. (407) 251-1111

12—Nursing Care

Home Health Care Services, Inc. 1100 N. Orange Ave., Suite 100, Orlando, FL 32801. (407) 251-1111

21—Paralegal

Paralegal Services, Inc. 1100 N. Orange Ave., Suite 100, Orlando, FL 32801. (407) 251-1111

LIFE SAVINGS

Life Savings Plan, Inc. 1100 N. Orange Ave., Suite 100, Orlando, FL 32801. (407) 251-1111

27—Nursery & Child Care

Nursery & Child Care Services, Inc. 1100 N. Orange Ave., Suite 100, Orlando, FL 32801. (407) 251-1111

35—Business Opportunities

Business Opportunities, Inc. 1100 N. Orange Ave., Suite 100, Orlando, FL 32801. (407) 251-1111

LEGAL SERVICES

Legal Services, Inc. 1100 N. Orange Ave., Suite 100, Orlando, FL 32801. (407) 251-1111

LOCAL VENDORS

Local Vendors, Inc. 1100 N. Orange Ave., Suite 100, Orlando, FL 32801. (407) 251-1111

WEEKLY NEWS

Weekly News, Inc. 1100 N. Orange Ave., Suite 100, Orlando, FL 32801. (407) 251-1111

CELEBRITY CIPHER

Celebrity Cipher, Inc. 1100 N. Orange Ave., Suite 100, Orlando, FL 32801. (407) 251-1111

ADVERTISING

Advertising, Inc. 1100 N. Orange Ave., Suite 100, Orlando, FL 32801. (407) 251-1111

ASSISTANT'S MACHINE OPERATORS

Assistant's Machine Operators, Inc. 1100 N. Orange Ave., Suite 100, Orlando, FL 32801. (407) 251-1111

PREVIOUS SOLUTION

Previous Solution, Inc. 1100 N. Orange Ave., Suite 100, Orlando, FL 32801. (407) 251-1111

TEV XJNNLE

TEV XJNNLE, Inc. 1100 N. Orange Ave., Suite 100, Orlando, FL 32801. (407) 251-1111

PREVIOUS SOLUTION

Previous Solution, Inc. 1100 N. Orange Ave., Suite 100, Orlando, FL 32801. (407) 251-1111

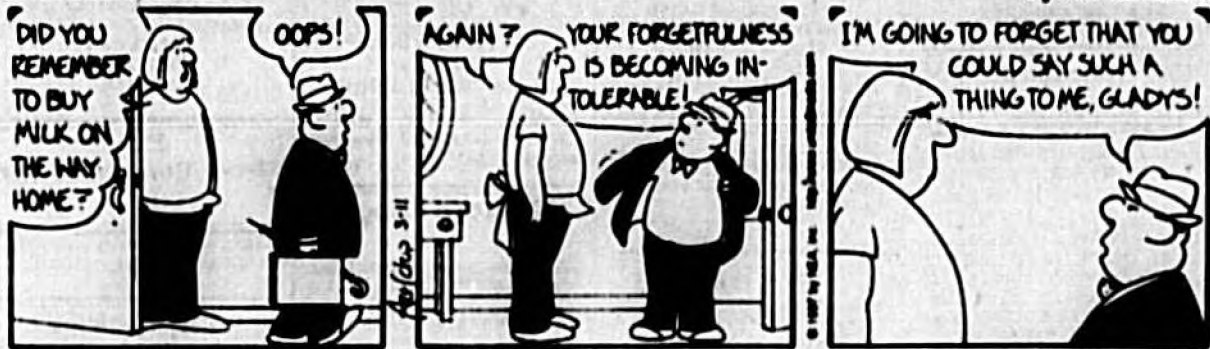
BLONDIE



BEETLE BAILEY



THE BORN LOSER



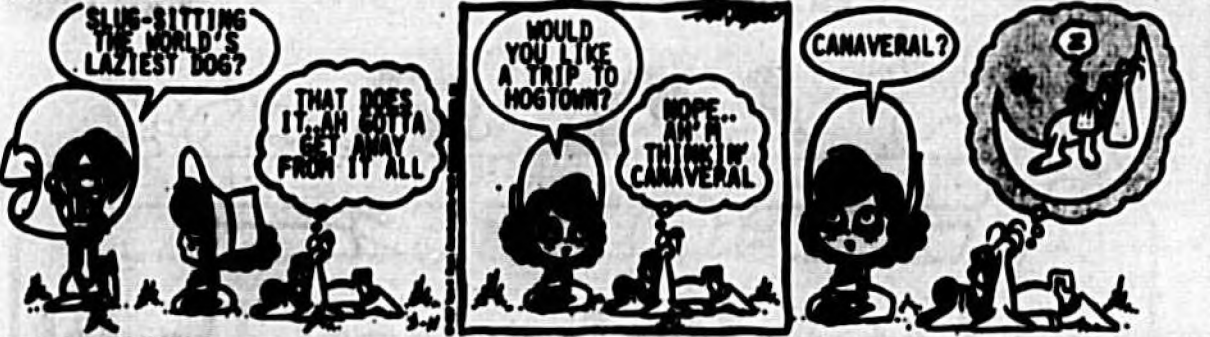
PEANUTS



EEK & MEK



TUMBLEWEEDS



ARLO AND JANE



FRANK AND ERNEST



GARFIELD



ROBOTMAN



Second thoughts on medical testing

DEAR DR. GOTT: How can a person politely refuse tests that are ordered by her physician? Earlier this year, my doctor ordered several routine tests that I did not think I need. Medicare agreed and refused to pay for them. Do I have to?

DEAR READER: Any competent adult has the right to refuse medical tests. I don't know of any "polite" way to inform a physician of this preference. I believe that a straightforward approach is the best answer, something to the effect that "I trust your judgment, doctor, but I would like to put off testing for the time being."

In my experience, it's the physician's obligation to explain to patients what tests are necessary and why. When my patients refuse testing — which they occasionally do — I feel that I have not done my job, and I attempt to negotiate a compromise with them.

As a general rule, we can ordinarily work things out. But I never "blame" them or try to frighten them into undergoing tests. In my view, this is all just part of the normal give and take that is inherent in any doctor-patient relationship.

However, don't be seduced into thinking that you are necessarily correct because Medicare refuses to pay for the tests. In most cases, this is merely an arbitrary decision governed by some minor bureaucrat's attempt to save money. In such instances, the hospital or lab may or may not demand that you pay out of pocket; this is usually considered on a case-by-case basis.

For example, Medicare will not reimburse most patients for a bone-density exam, a test used to diagnose osteoporosis, unless the patient has osteoporosis. But how can a practitioner make the diagnosis reliably without the test? It's a Catch-22. The same is true of the PSA blood test for prostate cancer.

Despite the Medicare rulings, I still encourage women at risk of osteoporosis, and men with possible prostate cancer, to have the necessary testing performed. Medicare doesn't always "practice good medicine," so it's up to each doctor and his patient to decide what testing is appropriate.

DEAR DR. GOTT: I am 79 years old and have emphysema requiring supplemental oxygen day and night. I stopped smoking five years ago after my doctor warned me that my lungs are getting progressively stiffer with age. Are there any medicines or herbal remedies that might unsoften my poor old lungs?

DEAR READER: Emphysema refers to a consolidation of changes that occur in the lungs as we age. Everyone gets this, to one degree or another. These alterations, which are worsened by smoking, include loss of pulmonary tissue, the trapping of stale air in the lungs (with resulting over-inflation), and less-efficient



PETER GOTT, M.D.

Under these circumstances, doctors can only hope that treatment will retard the progression of the pulmonary affliction.

Such therapy includes avoidance of air pollution (and smoking), the use of antibiotics to quell recurrent infections, occasional prescriptions of corticosteroid drugs (which relieve bronchial spasms), and supplemental oxygen.

In addition, patients can be instructed in ways to cope with diminishing lung function, through special breathing exercises and modification of physical activity. There is no medicine or herbal remedy that will arrest the development of emphysema.

In my opinion, you should be under the care of a pulmonologist, who can coordinate therapy and supervise your various treatments.

breathing — all leading to increased shortness of breath and laboredness to exercise. Your doctor is correct: Patients with emphysema do have stiffer lungs, a far cry from normal, flexible, younger lungs.

Unfortunately, such changes are permanent. The damage doesn't heal, and the lungs remain more or less

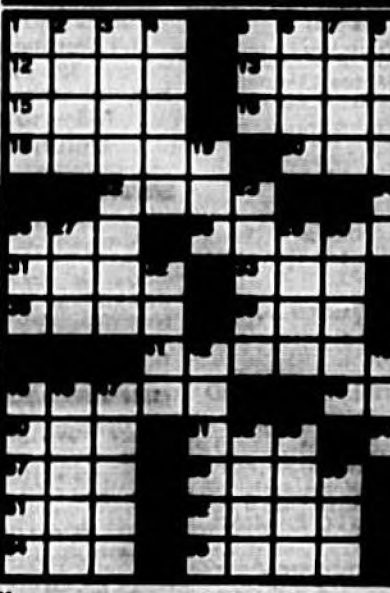
- ACROSS**
- 1 Chess
 - 3 Atlantic fish
 - 5 Govt. housing
 - 12 Org.
 - 13 Phoenix eagles
 - 14 Long time
 - 15 — Major
 - 16 Football
 - 17 Used to be
 - 18 Extrajudicial
 - 19 Pigeon hole
 - 21 Poetic proposition
 - 22 Night's opposite
 - 24 Address — Hawaii
 - 26 Investigative agency
 - 28 Dish
 - 31 Discretion
 - 32 Salt coin
 - 33 Tail
 - 34 Chopin's river
 - 39 Ball of yarn
 - 39 WWI area
- DOWN**
- 1 Run before the wind
 - 2 Soft sandwich
 - 3 Order of nuns
 - 4 Horse

Answer to Previous Puzzle

| | | |
|---------|---------|------|
| LOVE | LOAN | NON |
| SHIP | NAME | ADD |
| ARIG | DECK | HON |
| TIRED | ALAYED | |
| BAR | IT'S | |
| AMBER | LIBRY | |
| GRV | OTO | NAIR |
| LONG | TURN | TNO |
| UNDE | ORRANTY | |
| LOB | OWE | |
| ANALOGY | TROPH | |
| CVR | LOAD | AMAR |
| MEI | IRRE | RIRO |
| REO | ORR | VORE |

- ACROSS**
- 43 Protection
 - 41 — rating (of music)
 - 44 Woods-court player
 - 45 Party method
 - 46 Tuna
 - 47 Tree root
 - 48 Sweet goddess
 - 51 Old man
 - 54 Football guy
 - 57 Airline lingo
 - 58 Litter
 - 59 Motion picture
 - 61 Pull
 - 62 Type of desk or measure
 - 63 Aware of (2 wds.)
 - 64 Grovel ridge
 - 65 Dines
 - 66 Aster — O'Neal

STUMPED? Call for Answers @ 1-800-4-A-NEWS



- DOWN**
- 5 Foot street (abbr.)
 - 6 Inad.
 - 7 E. suburbs — (abbr.)
 - 8 Palm
 - 9 Not so many (2 wds.)
 - 10 Gray with age
 - 11 Photographer
 - 12 Asteroid
 - 13 Subtotal
 - 14 (No. of) (abbr.)
 - 15 First-class (2 wds.)
 - 16 Commemorative agency
 - 17 Barbara — (abbr.)
 - 18 Eye-eye
 - 19 Mink
 - 20 choice
 - 21 Pair
 - 22 Diagnose
 - 23 PB
 - 24 Superlative suffix
 - 25 Treasure
 - 26 Anglo-Saxon
 - 27 This case of (2 wds.)
 - 28 State of security
 - 29 Courtesy
 - 30 Penmanship
 - 31 Personal contact
 - 32 Actor
 - 33 Johnny — (abbr.)
 - 34 Beer
 - 35 common noun
 - 36 See for
 - 37 thing in law

From Sydney to London

By Phillip Alder

The second of my Christmas competition problems was based on one given by Robert Sheehan in The Times newspaper. He started the article by saying, "I made a rather poor job of coloring for bad breaks." I think that is because he was at the rubber-bridge table, where players protest prolonged pauses. In a world championship, I'm sure Sheehan, who is usually an excellent, thoughtful declarer, would have played correctly.

It is best to establish dummy's spade suit. However, after winning the trump lead, if you start, as Sheehan did, with a spade to dummy's king and a spade ruff in hand, you are in a quandary. If the spades are 3-3, you can draw trumps, getting home even if they are 4-1. Yet if spades are 4-2, you

need to find trumps 2-2. You must enter dummy with a trump, ruff a spade with your remaining trump, cash the club ace, ruff a club in the dummy, draw the last trump, and claim.

It is true that the initial trump lead strongly suggests a 3-2 break. And, a priori, a 4-2 spade split is more likely than a 4-1 diamond division. However, the way to avoid all the guesswork is to start by cashing both of dummy's top spades. Even if the second is ruffed, you might still survive via luck in the heart suit. Here, though, when you ruff a spade in hand at trick four, you know the story.

The most common reader error was to take the heart finesse at trick two. As you can see, West wins and gives East a heart ruff.

Finally, if you disagree with that analysis, please contact Sheehan, not me!

P.S.: Sheehan made his slam at the table.

North 60-11-07

AKJ762
Q73
KJ87
A3

West East

A83 AQ1095
K10983 96
82 643
AJ76 KQ1085

South

64
AQJ34
AQ109
A43

Vulnerable: Neither
Dealer: North

| South | West | North | East |
|-------|------|-------|------|
| 20 | Pass | 20 | Pass |
| 30 | Pass | 40 | Pass |
| 60 | Pass | Pass | Pass |

Opening lead: ♠2

Your Birthday

Wednesday, March 12, 1997

In the year ahead you might surprise yourself and others with your resourcefulness in managing commercial matters. When you get a bright idea, discuss it with expert counsel and move on it as rapidly as possible.

PISCES (Feb. 20-March 20) Someone you like might need your help today and your feelings may urge you to go overboard a bit. This could be unwise and hurt you both. PISCES, treat yourself to a birthday gift. Send for your Astro-Graph predictors for the year ahead by mailing \$2 and B&S to Astro-Graph, c/o this newspaper, P.O. Box 1768, Murray Hill Station, New York, NY 10186. Be sure to state your zodiac sign.

ARIES (March 21-April 19) Confidential information you receive from an acquaint-

ance today shouldn't be taken too seriously, especially if it could cost you money.

Taurus (April 20-May 20) You will offer sound advice to a friend today. Unfortunately, however, you might not take to heart the very wisdom you impart to others.

GEMINI (May 21-June 20) Important judgments you make today must be based upon reality and not upon wishful expectations. Rose-colored glasses won't help.

CANCER (June 21-July 20) If you're not in a position to call the shots today, do not take risks on others whose judgment you're not thoroughly familiar with.

LEO (July 23-Aug. 22) Guard against the inclination today to do things contrary to your better judgment. When your common sense urges you to disengage from something, don't ignore it.

VIRGO (Aug. 23-Sept. 22) You might have rather grand expectations today and you could become disenchanted with small things. Forget about size and focus

on quality.

LIBRA (Sept. 23-Oct. 22) Even though your judgment will be relatively keen today, it might not be up to par where finances are concerned. Handle resources prudently.

SCORPIO (Oct. 23-Nov. 22) Do not rely too heavily upon Lady Luck or your charm and wit today. All of these are valuable assets, but it will take dedicated effort to achieve success.

SAGITTARIUS (Nov. 23-Dec. 21) If you build castles on sand today, they will probably be swept away by the tides. Distinguish between real optimism and false hope.

CAPRICORN (Dec. 22-Jan. 19) Do not let others dictate the way you handle your resources today; their good intentions might put you in a bind you won't fully understand.

AQUARIUS (Jan. 20-Feb. 18) Your success today will be predicated on how well you personally direct events. Do not leave matters up chance.

©1997 by NEA, Inc.

