

Income Tax - 5

If Marriage Is On Rocks?

By Charis W. Schoeneman
Written for
Newspaper Enterprise Assn.
(Fifth of 10 Articles)

Along with the husband's wreckage, a marriage broken by divorce or separation leaves a host of tax problems and confusion. This article will tell how to handle alimony and support payments on 1963 tax returns.

A man who itemizes deductions may deduct alimony or separate maintenance payments as they are defined in the tax law.

He may not deduct payments which have been specifically designated as support for minor children.

Whatever money is deducted by the man as alimony or separate maintenance is, however, taxable income for the woman who receives it.

Child support payments, since they are not deductible for the man, are not considered taxable income for the woman.

To be deductible, alimony and separate maintenance payments must satisfy each of the following tests:

—They must be required under or incident to a court decree of either divorce or separate maintenance or under a written separation agreement or a support decree.

—They must have been either paid in discharge of a legal obligation based upon the marriage or family relationship, or required by the support decree, or made under the separation agreement and because of the marriage or family relationship.

—They must have been paid after the decree of divorce or separation, or after the separation agreement.

—They must generally have been what the law calls "periodic payments."

(It is true that certain installment payments of a total fixed amount of alimony may be deductible, even though they do not technically qualify as "periodic payments." But you must check carefully to see whether such installment payments of a specific total sum are in this category.)

What is meant by "periodic payments?" They may be either payment of fixed amounts for an indefinite period of time or payments of an indefinite amount (like a percentage of salary) for a fixed or indefinite period. They need not be made at regular intervals.

Generally, fixed payments for a fixed period of less than 10 years are not periodic payments and are not deductible.

Carolyn King Melon Queen

CYPRESS GARDENS (UPI)
—Carolyn King, a slender blonde from Bartow, will be Florida's entry in the National Watermelon Queen contest at Jacksonville next month.

Miss King won the Florida watermelon queen title at Cypress Gardens Sunday, Judy Lynn Prince 21, Land O'Lakes was runner up. Both girls are students at the University of Florida.

Scientists tell us that the camel family had its start in North America and not in Asia as we might suppose.

There's a lot to do in SANFORD

If you're newly arrived, looking for the newest shops, the best places to eat, a wash-and-repair, your church or synagogue, places to shop or perhaps a house or apartment... find the

The Sanford Herald

Welcome to the Vagon

Virginia Petrash
P. O. Box 1214
Sanford

Phyllis Hugenstein
FA 2-5254
Lake Mary

Nora Norris
TE 8-1816
S. Seminole

The only exception to this is where a contingency, such as death or remarriage, can terminate the less-than-10-year obligation. Then the payments will qualify as deductible "periodic payments."

Are a divorce lawyer's fee deductible? No. Ordinarily not, unless the fee can qualify

Banking, Oil Firms To Merge

JACKSONVILLE (UPI) — The Florida mortgage-banking house of Stockton, Whitley, Davin and Co., (SWD) and the General American Oil Co., Dallas, Tex. have announced plans to consolidate resources.

SWD President J. J. Daniel, Jacksonville and American Oil Co. President W. L. Perryman, said the oil company would acquire all the assets of SWD in exchange for 315,000 shares of General American Oil common stock. The officers said the transaction is still subject to the approval of the board of directors of each company.

Deltona Club Invited To Join Glee Club

Invitation to the Deltona Pioneers Club to join the Deltona Glee Club was extended at the February meeting of the Glee Club during which a program of patriotic and love songs was presented to commemorate the month.

Mrs. Charles Cressy was presented as chairman of the hospitality committee. Assisting her will be Mrs. Boleford, Mrs. W. Cole and Dot Deming.

Named to the refreshment committee were Mrs. Hawthorn, Marion Roberts and Sophia Stutterheim.

In 1857, Elizabeth Barrett Browning addressed a petition to Napoleon asking him to remit the exile sentence passed upon Victor Hugo.

as payments in connection with tax advice.

Sometimes a divorced husband is required by a court to pay the insurance, mortgage, interest, taxes and utilities for a house he and his ex-wife still own jointly (with rights of survivorship). Are these expenses deductible as alimony? No. The IRS says he cannot deduct as alimony any of these expenses, except the utilities. However, he can deduct the interest and taxes to the extent these items ordinarily are deductible by any homeowner.

(NEXT: Deductions for education.)

Club Members Get Reminder

By Julia Bartow
A reminder has been issued for members of the Altamonte Civic Club that there will be a meeting of the Federation of Women's Club this Thursday at 10:30 a. m. at the Women's Club in Sanford. A covered dish luncheon will follow the meeting.

Members of the Altamonte Club who did not attend the Feb. 5 meeting and who wish to enter the hat and dress contest planned for the March 4 meeting are asked to contact Mrs. W. Morrell.

The club will sponsor an old-fashioned food sale on March 14 from 10 a. m. until 1 p. m. at the Community House on Maitland Avenue.

Lake Mary Girl In Contest

Miss Dolores Kirach, 20, daughter of Mr. and Mrs. R. H. Goble of Lake Mary, has been selected as a contestant for the 1964 "Florida Citrus Queen" title.

The contest will be held in Monday night, March 9, in Winter Haven as a feature of the Florida Citrus Exposition.

Miss Kirach is being sponsored by the Winter Park Chamber of Commerce.

Beta Club Inducts Two New Members

By Jane Casselberry
The Beta Club, Lyman High School's honor society, held an induction ceremony and reception for new members and parents last Monday night in the school auditorium.

County School Superintendent R. T. Milwee was guest speaker.

The Beta Club creed was explained by officers Glenda Payne, Marcia Easterling, Lorraine Wagner and Sylvia Chambers.

New members inducted by Principal Carlton Henley were Ruth Klein, a junior and David Ryan, a sophomore.

Members inducted in December also were honored. Included in this group were Peter Carlson, David King, Mary Mack, Paula Riddle, Andrew Hibel, Harry Marshall, Mary Midgette, Susan Lakatos, Kerry Parker, Gwyn Rutenkroger, Steven Brady, Robert Goplen, Tom McLaughlin, Kelly Trawick, Demetrius and Dorian Therianos, Candice Bamford, Nancy George, Kathleen Kent.

Exchange Up
SAN FRANCISCO (UPI)—The Pacific Coast Stock Exchange did a \$1,542,412,811 volume business in 1963, 40 per cent above the 1962 total, a market bulletin says.

Cynthia Legg, Eurnice Murray, Nancy Payne, Mary Peterson and Carolyn Thomas.

Several musical numbers were presented by Beta members. Piano solos were played by Gwyn Rutenkroger and Glenda Payne. A trumpet solo was presented by Pat McLaughlin who was accompanied by his brother, Tom, on the piano.

Mrs. Aldia Milwee, Beta Club sponsor, was in charge of the program.

Refreshments were served following the program.

Burial Insurance Sold by Mail

You may be qualified for \$1,000 life insurance... an you will not burden your loved ones with funeral and other expenses. This NEW policy is especially helpful to those between 40 and 90. No medical examination necessary. OLD LINE LEGAL RESERVE LIFE INSURANCE. No agent will call on you. Free information, no obligation. Tear out this ad right now.

Send your name, address and year of birth to: Central Security Life Insurance Co., Dept. C-118, 1418 West Rose-dale, Fort Worth 4, Texas.

ROOFING

Re-Roofing or Building?

Master-Bilt **BIRD** Wind Seal SHINGLES

Get All Materials and Installation On Our Easy Terms Plan. Only One Bill To Pay The Gregory Way.

Maple Ave.
at
6th St.
Sanford
Fla.

GREGORY LUMBER

322-0500

Thriftway's

SALE

Mon. • Tues. • Wed.

25th & PARK, SANFORD

"CHEF" FROZEN

WAFFLES

PKG. OF 6

"SHURFINE" EVAPORATED MILK

TALL CAN

Limit: 5 With Your \$3 Or More Food Order Please

"QUICK 'N THRIFTY"

JIFFY STEAKS

2-OZ. EACH

"FOOD KING" QUARTERS

OLEO

LB. PKG.

Limit: 2 With Your \$3 Or More Food Order Please

"CENTER CUT"

PORK CHOPS

EACH

"SEALD-SWEET" FROZEN

• LEMONADE (or) • LIMEADE

6 OZ. CAN

Limit: 3 Of Your Choice

JUICY "FLORIDA" GRAPE-FRUIT

5 LB. BAG

39¢

FRESH "100% PURE" Ground BEEF

LB.

39¢

"MR. G" FROZEN FRENCH FRIES

9 OZ. PKG.

"LIQUID DETERGENT"

VEL

12 Oz. Btl. 35¢

"RELIABLE CLEANSER"

AJAX

2 Reg. Cans 33¢

"KRAFT" SALAD MUSTARD

6 OZ. JAR

50 EXTRA With This Coupon & The Purchase Of "Allweat" OLEO 2 One Lb. Pkgs. 5¢
Coupon good at your "Thriftway" Only, Thru Wed., February 26

GOLD BOND STAMPS

"FUN BATH" SOAKY

15 Oz. Btl. 39¢

"NORTHERN" COLORED OR WHITE TOILET TISSUE

REG. ROLL

50 EXTRA With This Coupon & The Purchase Of "Sara Lee" Choc. SWIRL CAKE 14 oz. Cake 7¢
Coupon good at your "Thriftway" Only, Thru Wed., February 26

GOLD BOND STAMPS

"AIR DEODORIZER" FLORIENT

10 Oz. Each 69¢

50 EXTRA With This Coupon & The Purchase Of Each Pkg. Of FRYER PARTS
Coupon good at your "Thriftway" Only, Thru Wed., February 26

GOLD BOND STAMPS

"BLEACH PACKETS" ACTION

7 Oz. Can 59¢

Reg. Pkg. 41¢

ROEBUCK AND CO

We're Movin'...

To **PINECREST SHOPPING CENTER** SANFORD (2 Doors From A&P)

THURS. FEB. 27th **GRAND OPENING** THURS. FEB. 27th

IN NEW PINECREST SHOPPING CENTER LOCATION (2 DOORS FROM A&P FOOD STORE)

SEARS

CATALOG SALES OFFICE
SANFORD, FLA. PHONE 322-1771



Sanford To Add Fluoride To Water Supply

The Sanford Herald

Zip Code 32771
WEATHER: Partly cloudy through Wednesday with showers likely late today; high today in 70s; low tonight in 50s.
VOL. 56 United Press Leased Wire Established 1908 TUES., FEBRUARY 25, 1964 SANFORD, FLORIDA NO. 133

New School Dedication Tonight



JOHN BURTON IV . . . architect
R. T. MILWEE . . . superintendent
MORRIS RUBY . . . principal
JACK JENNINGS . . . builder
DOUGLAS STENSTROM . . . speaker

Although no date has been officially set for the actual opening of Seminole's new English Estates Elementary School, the modern air-conditioned plant will be dedicated to open house activities tonight starting at 8.

Douglas Stenstrom, former state senator and currently the attorney for the Seminole County Board of Public Instruction, will address a large group of dignitaries and guests expected to be on hand for the dedicatory ceremonies. The public is invited to attend, it was announced today by County Schools Superintendent R. T. Milwee.

Among special guests will be Jack Jennings, a member of the Orange County School Board and the general contractor for the construction of the plant; John Burton IV, the architect; and Morris Ruby, principal of the school.

Chairman James P. Avery will lead a delegation of County Commissioners, State Sen. Mack Cleveland, Reps. Jan Fortune and Joe Davis Jr., also will be on hand with members of the county school board which includes Chairman Dan Wright, Mason Wharton, Dr. A.W. Epps Jr., John Evans and Jim Birkenmeier.

Major Owen Anstey of Casselberry and Mayor G. C. Jackson of Maitland will represent their respective communities.

"This new plant," said Supt. Milwee, "evolves in its basic concept from planning begun by the school board and administrative staff as early as 1961. It was apparent at that time that a new approach to constructing school facilities was necessary if the county was to be kept current with the newest trends in the field of education."

Early Action Due

Sanford's water supply will contain fluoride as a result of action taken Monday night by the City Commission.

The fluoridation ordinance was passed on first reading and then commissioners waived the second reading to make the move official.

There were no dissenting votes and the regulation called through the commission chamber without opposition from visitors.

Instead, two members of the gallery complimented commissioners for the smooth, orderly manner in which the ordinance was adopted.

Fluoride is expected to be added as soon as the necessary arrangements can be made.

Annexation Of New Shopping Center Started

Annexation of the Sanford Shopping Center site was started Monday night as the City Commission authorized the moving in of necessary equipment to accomplish it.

The matter was up for first reading of the annexation ordinance. Following it, commissioners waived the second reading of the ordinance.

They also authorized the expenditure of \$22,533.06 for the purchase of materials for utilities needed to complete the program.

In other action, the commission:

- Approved a change in a local ordinance which currently limits the 2 a.m. closing for liquor outlets to hotels with a 100-room capacity. The change will allow the Vukob Hotel's Caribe Lounge to stay open weekdays and Saturday nights till 2 a.m.
- Tabled a proposed action on sale of the old library site. A request to purchase it was made by First Presbyterian Church in order to exchange it with the Women's Club so they can obtain that building. The city was offered \$10,000 and the reviewed valuation was set at \$13,500.
- Referred for further commission study an action by Bradley Graham to sell the water system in Seminole Estates to the city.
- Approved a request for a beer and wine license at the Bass Grocery Market at 2700 Sanford Avenue.
- Referred to the city attorney's request for the city to take over the operation of the sewer lift station at Seminole High School.

Downtown Area To Get Added Parking Space

An attempt to increase business for downtown merchants will be undertaken as a result of Monday night action by the City Commission.

It involves changes in the parking pattern on First Street and Magnolia and Palmetto Avenues in the immediate downtown area.

Angle parking will be permitted on both sides of First and Magnolia and on the west side of Palmetto.

This, it was explained, will give added parking spaces and, with the elimination of so-called "loading zones" wherever possible, a large space would be made available.

Commissioners also decided to remove the white line on First Street which limits westward travel to a single lane.

Also discussed but with no formal action being taken was a project to get additional off-street parking facilities in three areas. Commissioners said this would allow downtown employes to park away from their stores and offices and would permit more meter space for customers.

More meters would be added for street parking as the spaces become available.

B. L. Perkins, a downtown merchant, urged the commission "to make it (downtown) as attractive as possible. Keep the traffic flow slow. We have other through arteries for those wishing to use them."

In other action pertaining to traffic, the commission agreed to close Brand Avenue behind the Vukob Hotel, install a mail and generally beautify the area with the cooperation of the hotel owner, John A. Burton IV.

Appraiser Enters Tax Assessor Race

"As an announced candidate who has proven his capabilities as county tax assessor, I believe fair and equal tax assessment is the very foundation of good government," said Richard E. McCanna today in tossing his hat into the ring for that office.

It is in "tax" that school boards and county commissioners levy the taxes for the operation of our county."

McCanna continued: "To insure fair and equal assessments, modern, sound and nationally accepted appraisal principles must be used to set up a system of property valuations. Property owners should be welcome to examine the records and to talk over their problems directly with the assessor.

"If elected, I will eliminate filing of personal property tax returns by householders, simplify homestead exemption procedures and provide more convenient services for taxpayers throughout the county."

McCanna has been a real estate broker and property appraiser for 15 years, vice president and member of the executive committee of the Seminole County Chamber of Commerce, former member of the Seminole County zoning board, mayor of Maitland for two terms and resides with his wife and three children in South Seminole County.



R. E. McCANNA

Hearing Set On Tax To Build Hospital Wing

A public hearing on a possible tax for a new wing at Seminole Memorial Hospital today was called by the County Commission.

The Commission set the special hearing for 9 a. m., March 30.

In the works is a 60-bed addition to the local hospital which, officials told commissioners, is continuously over-taxed.

County officials had planned to hold the hearing at the April meeting. However, after A. B. Peterson Sr., hospital board chairman, explained the urgency of the project, they moved the date ahead to March 30.

The resolution to be acted upon at the hearing would provide for a .57 mill levy as the county's part of matching funds for the \$650,000 project.

The county would, should the hearing be successful, provide \$350,000 over a three-year period.

The commissioners reported today they had previously inspected the hospital and determined the urgent need for expansion.

The balance of the \$650,000 would come from the Hill Hospital Fund.

Other action this morning concerned primarily the need for additional roads and improvement of existing traffic arteries.

Daving of Winter Park Road in Casselberry, as requested by a contingent of citizens from there, was delayed pending the commission's conference with its technical advisers.

Chairman James P. Avery Jr. told the group it would mean the revamping of the county's road program and the proposal would require further study.

Petree Enters Race For Florida House

Robert G. Petree announced his candidacy for Florida House of Representatives for Seminole County today.

The South Seminole resident is a partner in the Orlando law firm of Bishop & Bornstein.

Petree attended the American University in Washington, D. C., did graduate work at the University of Virginia, attended George Washington University College of Law and was graduated from Duke University College of Law. He is a member of the Florida Bar, the Federal Bar and the Supreme Court of the United States.

Following his graduation from law school, Petree was commissioned as captain in the United States Army, Judge Advocate General's Corps. He served as acting chief of special claims at Fort Holabird, Md., and as special assistant to the Judge Advocate General, Washington, D. C. Both before and after his military service, Petree served in Washington with the Board of Immigration Appeals and the Department of Justice.

Petree, a life-long Democrat, was recently named one of the 10 outstanding Young Democrats in the nation. He is presently one of the vice presidents of the Young Democratic Clubs of Florida, adviser to the Teen Dem Club of Florida, and President of the Orange County Young Democrats.

On announcing his candidacy for the Seminole House seat, Petree issued the following statement:

"I feel the time has come for Seminole County to commence a program of long range planning designed to anticipate and cope with the problems presented by the mushrooming suburban communities in both the North and South ends of the County. Seminole County can no longer afford to ignore the fact that it is about to be deeply involved in the commercial and population explosion of the greater Central Florida area. If elected as a representative of Seminole County, I would encourage an increased participation by this county in the activities of such study and survey organizations as the East Central Florida Planning Council.

"Certain areas of Seminole County, and Sanford, in particular, have enormous potentials for the attraction of light industry, such as electronic components and plastics. We need to fully measure the assets of our County and make the attractive business climate which prevails here known to more firms seeking relocation in Florida."



R. G. PETREE

56 Die As Jet Crashes At N. O.

NEW ORLEANS (UPI) — An Eastern Air Lines DC8 jetliner with 56 persons aboard crashed into 10 feet of water in Lake Pontchartrain in early morning darkness today, minutes after takeoff from New Orleans. Officials reported no survivors.

There was no advance indication of trouble as the plane, with 49 passengers and a crew of 7, left New Orleans on the second leg of a flight from Mexico City to New York. Pilot William Z. Zeng "nonchalantly" acknowledged orders to veer northeastward, and the plane vanished from radar screens a few moments later.

C. Of C. To Be Guest At Farm

Members of the Seminole County Chamber of Commerce Coffee Club will be the guests of the Central Florida Experiment Station at the Experimental Farm on East Celery Avenue Thursday morning at 10 o'clock.

Dr. John W. Wilson, station entomologist, will welcome the "kaffeeklatchers" and introduce the station personnel. A motorcade will form at the Chamber building at 9:45 to provide transportation for members planning to attend.

Gainesville Gets Plant

GAINESVILLE (UPI) — A new \$4.5 million battery manufacturing plant has been opened here, the General Electric Co. announced today.

The plant located on a 165-acre site seven miles north-west of here, will produce rechargeable nickel-cadmium batteries used in a variety of cordless equipment.

Mrs. Grinstead In Council Race

Mrs. J. D. (Mona) Grinstead of North Orlando, this morning filed her qualifying petition as a candidate in the March 17 elections for the group 4 council post now held by W. W. Anderson who has publicly stated that he will not seek return to the office.

Mrs. Grinstead has been active in many civic and social organizations of the village and for a number of years has served as Herald reporter for the area.

Voters League Sets Meeting

GAINESVILLE (UPI) — President L. V. Davis announced today the Florida Voters League will meet in Orlando March 14-15, with some 300 delegates from local affiliated voters leagues expected to attend.

Davis said the candidates for governor have been invited.

Lawson Rites Wednesday

Funeral services for Johnny E. (Bud) Lawson, 18-year-old Ashbake High School star athlete, will be conducted by Rev. John T. Adams Jr. at 2 p.m. Wednesday at First Methodist Church. Burial will be in Oakdale Cemetery, DeLand.

Lawson was killed in an automobile accident Sunday night at Orlando.

Brisson Funeral Home is in charge of arrangements.



BOB CARROLL, now rounding out his first four-year term as constable of District 4, today announced his candidacy for re-election, adding that "I've served the public to the best of my ability these last three years and would like to continue to do so."

(Herald Photo)

Seminole Cars Increase 1,000

One thousand more automobiles are in Seminole County this year as compared to last year, according to Mrs. Marjorie Shepard, assistant tax collector.

Through last Thursday's deadline, Mrs. Shepard said 21,914 license plates were sold as compared to 20,815 in 1963, an increase of 1,099.

Increased cost of tags and extension to 13 months was reflected in revenue, a total of \$662,218.09 collected this year as against \$617,722.44 last year.

Mailing service this year also proved popular, Mrs. Shepard said, with 2,000 tags mailed between Jan. 1 and Feb. 20.

Ruby Appeal Plan Dropped

DALLAS (UPI) — Jack Ruby's lawyers abandoned plans to ask the U. S. Supreme Court to bar "television witnesses" as jurors.

The Texas Supreme Court turned them down Monday.

Questioning of prospective jurors for the murder trial of Lee Harvey Oswald's slayer, resumed with three jurors sworn in and the defense rapidly running out of challenges.

While the azaleas still are a few days from the height of their glory, enough of them are bursting into bloom to warrant the drive around the neighborhoods of this St. Johns river garden spot. The whole city will be a veritable riot of colorful azaleas, and Sunday's sunshine set them off in all their gorgeous splendor.

At the zoo the monkeys on "the Island" haven't had a chance in a long time to meet so many new and interesting people! Each bird or animal seemed determined to do its best to make sure the visitors came back again - soon.

Backed by the verdure of the trees across Lake Monroe a small craft under sail lately made its way into the "snug harbor" of the yacht basin. Serenity!

Picnic baskets and the huge appetites that gather 'round them on such outings took their places on the tables along the lake front, the scenic surroundings and tasty tidbits making a combination that makes for children's laughter and the happiness of loving parents.

At the corner of Celery Avenue and Cameron Avenue the eye-catching, breath-taking beauty of the Andrea's front yard stopped many a car. Some riders became pedestrians in order to get a closer look at the stately tulips in the splash of colors, their bordering petunias set under waving palm fronds on a carpet of gorgeous green grass. A sight well worth the trip!

Across the lake the towering oaks festooned with moss cast flickering shadows across the road as the afternoon sun slowly dipped toward the St. Johns. Beautiful contrasts in grays, gold and greens!

The lane to Stone Island beckoned. Here the "Big Mansion" of the Sam Lawson's stands out as a landmark of yesterday. But on the lake front to the west, delightfully screened by the leafy liveliness of the trees, but in full view of the panoramic view of the vast expanse of Lake Monroe, are the modern retreats of "the three colonels." Far removed from the bustle of traffic and traumas, these homes echo to the trill of songbirds.

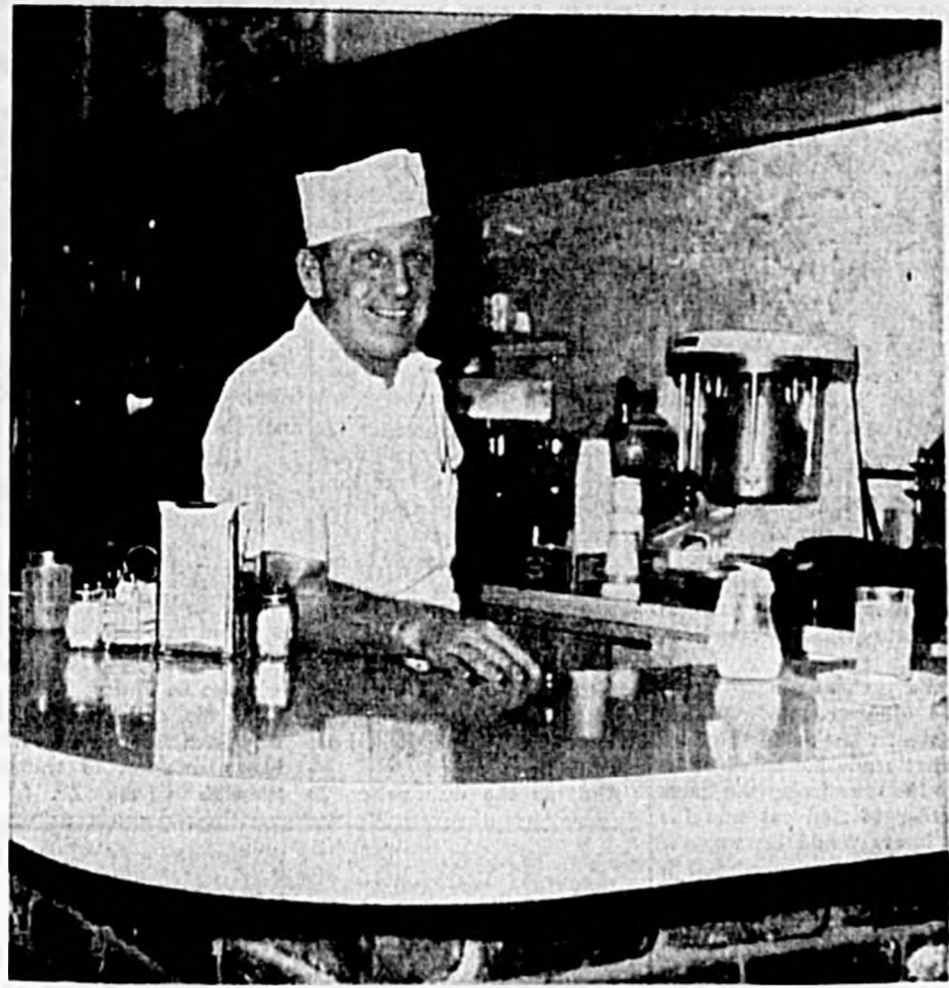
What better day could the sales force of Deltona have than this one? And here at the Deltona club house on the wave-carressed shore there were two bus-loads of prospects from "up the country" who are getting the selling of their lives just from the scenic wonder and the brilliant sun. And there, sure enough, was one of the visitors, sans shirt, torso glistening in Old Sol's smile, having his picture taken to "prove it all" to the friends at home.

The Sanford Woman's Club is now making plans for its annual Animated Magazine to be presented March 18, at the organization's club house on Oak Avenue. Mrs. George Walls of Sanford is the program chairman.

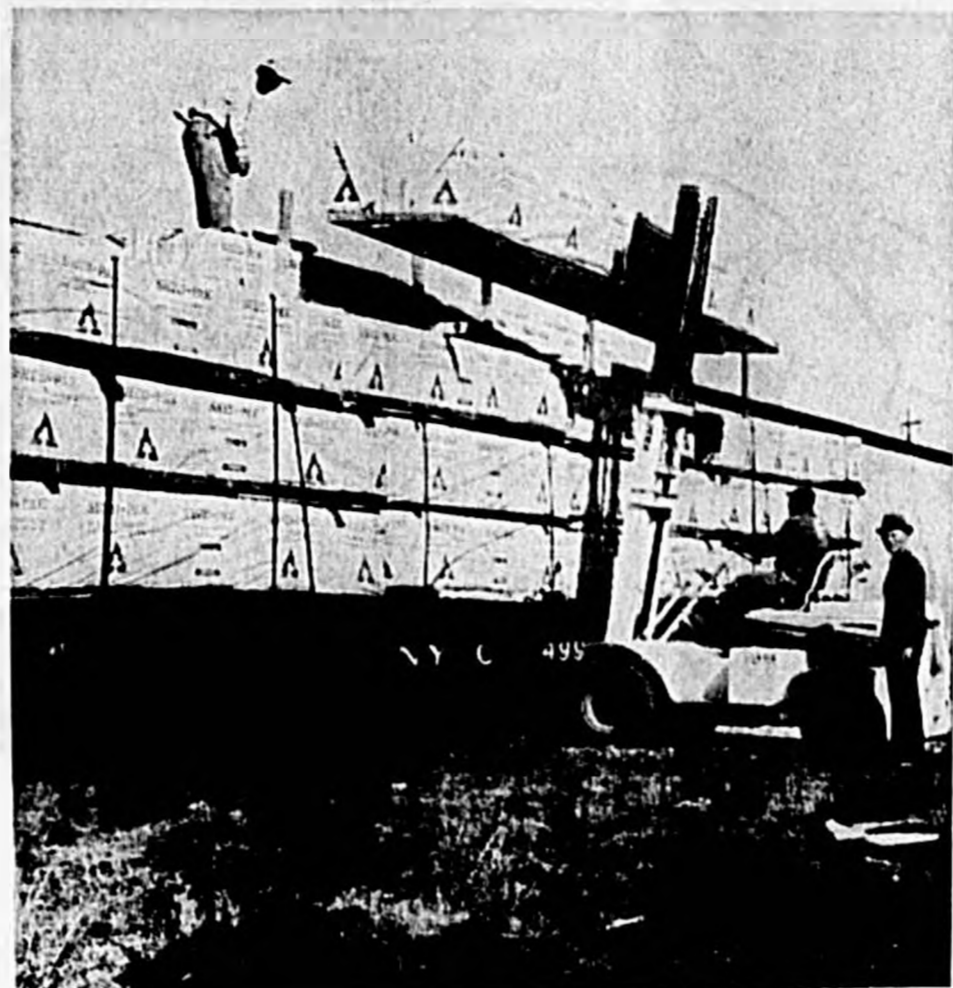
Item in the Sanford Kiwanis Club Bulletin — "A nickel goes a long way nowadays. You can carry one for days before finding anything it'll buy."

Someone called to say that the Beatles have given a new meaning to long-hair music.

See, Shop, Save... in Seminole County!



"COTTON" BROWN, new owner, invites one and all to visit him at the Village Inn Restaurant on First St. in downtown Sanford. Hours are from 5 A.M. to 9 P.M. daily. You'll find breakfasts, lunches, sandwiches, good coffee and fast, friendly service at the Village Inn. (Adv.)



Pictured above is J. J. West of Gator Lumber supervising the unloading of a carload of lumber by Bill Van Zant and Willis Mathis. The Shed-Pak Lumber was shipped from Snoqualmie Falls, Wash. For finest quality call Gator. (Adv.)



Miss Marilyn Epps, daughter of Dr. and Mrs. A. W. Epps, Jr. is a Sophomore at Seminole High. She loves her Therm-O-Jac one-piece Bermuda dress in dull blue and plaid. Can be seen exclusively at Mary-Esther's. (Adv.)



LOUISE PYLE is the new manager of the Lake Monroe Inn. Louise and her husband, Hank, recently purchased the business from Frank Durzo. They will feature charcoal broiled steaks, regular dinners, lunches, cocktails, and package goods. "Good Food, Good Drinks, Friendly Service." (Adv.)

Awards Supper Set By Oviedo Science Club

By Bernice Kelsey
The Oviedo Science Club has announced that all club members, teachers, parents and exhibitors in the Science Fair, grades seven through 12, are invited to participate in an Awards Supper to be held at 7 p.m. next Monday in the school cafeteria.

Purpose of the supper will be to honor first, second and third place ribbon and cup winners of the fair, which is scheduled at the Oviedo Women's Club this Thursday and Friday.

Special guest speaker for the supper will be Dr. Joe B. McCawley Jr., hypnotist, from Orlando.

Reservations for the event should be made with Mrs. Jim Palmer, science teacher, no later than Friday.

Mysterious Origin
Origin of the historic Stonehenge monument in England remains a mystery. This circle of neolithic stones is thought to have been erected more than 4,000 years ago by a migratory Bronze Age tribe.

FORD TOTAL PERFORMANCE WAS BORN HERE!



Forest City Baptist Church Gives Schedule For Week

By Maryann Miles
Services and meetings scheduled for the week at the Forest City Baptist Church begin with Wednesday's 7:30 p.m. prayer service and study course on the Book of Ephesians. Choir practice will follow.

Sunbeams also meet at 7:30 p.m. on Wednesdays at the church with Mrs. Elderred Whilden, Mrs. Ralph Greer and Mrs. Tom Bowser. A first meeting of the Intermediate Girls Auxiliary

was held last Friday at the home of Mrs. Yvonne Westmoreland on Wekiwa Drive. Mrs. Westmoreland is serving as counselor for the group and invites all girls between the ages 13 and 15 years to participate.

Junior GAs meet with their counselor, Mrs. George Marcus, every other Friday night at the church.

Training Union members of the Young Peoples and Intermediate departments are reminded that a special meet-

ing will be held at the Lockhart Baptist Church next Monday at 7:30 p.m.

During the week of March 1-8, members of the church have been invited to the home of Mrs. Ralph Greer, 1135 Suncrest Drive, Apopka,

each day from 10 until 11 a.m. for a Week of Prayer for Home Missions. Mrs. Greer, president of the WMU, will conduct the study hour. The group has set a goal of \$45 to contribute for mission work.

RCA VICTOR

New Vista[®]

COLOR TV

with **Space Age Sealed Circuitry**

SEE IT AT
Sanford Electric Co.
118 Magnolia 322-1562

JAYCEE'S
Fertilizer Sale

SAT., FEB. 29th

WHEELER
JC 6-6-6
25% Organic
100 Lb. Sack \$3.00

FREE Delivery To Your Door

CALL NOW

322-5481

9:00 A. M. to 5 P. M.

PROCEEDS TO —
Jaycee's Community Projects

THE SOUTH'S TOTAL PERFORMANCE CHAMP WAS BORN AND BRED IN RACES, RALLIES, ECONOMY RUNS! MANY HELD RIGHT HERE IN THE SOUTHLAND! READ HOW RACING HELPS GIVE BIRTH TO BETTER FORDS.

TEST-DRIVE A TOTAL PERFORMANCE WINNER... AT YOUR FORD DEALER'S

Strickland - Morrison, Inc., Sanford, Fla.

If You're Interested In An A-1 Used Car Be Sure To See Your Ford Dealer

Most automotive engineers will tell you that the track is one of their most valued laboratories.

For example, track competition has led directly to the following Ford engine changes: better block, improved pistons, improved valve train, stronger connecting rods and bolts.

Such improvements contribute not only to Ford's winning track record, but also to the **total performance** so important in your everyday driving.

Come see how it feels to test-drive a **total performance** winner! **SEE YOUR FORD DEALER TODAY!**

Plays Presented By Longwood 5th Grade

By Donna Estes
Playlets based on the lives of Washington and Lincoln were presented last Friday by Mrs. Adrienne Gregory's fifth grade class of Longwood Elementary School for the enjoyment of their parents and students of the fourth, fifth and sixth grades.

Participating in the George Washington skit, which was written by Renca Rowe of Mrs. Gregory's class, were Jay Davis, welcome and introduction; David McIntosh, Washington as a boy; Jimmy Weaver, Washington's father; Mike Bennett, slave; James Denmark, Lord Fairfax; Lee Lyons, Washington as a man,

Country Fair PTA Committees Hold Meeting

By Maryann Miles
PTA Committees for the April 18 Country Fair to be held at Bear Lake Elementary School met Monday morning at the home of Mrs. Mary Gore on West Lake Brantley Drive.

Plans for booth assignments were made and it was reported that boxes have been placed in the school office for white elephant donations, clothing or other items which will sell.

Members also were reminded that the next general meeting of the Bear Lake PTA is scheduled for 8 p.m. next Tuesday at the school. Those meeting Monday were Mrs. Gore, room representative chairman and members, Mrs. Nancy Bowers, Mrs. Mary Williamson, Mrs. Geri Rigby, Mrs. Peggy Mayes and Mrs. Laura Buel; Mrs. Kay Vella, chairman and means committee chairman and members, Mrs. Mary Krenger, Mrs. Beverly Lashley, Mrs. Frieda Herota, Mrs. Joanne Hugar, Mrs. Rena Bybicki and Mrs. Doris Doss.

and Marilyn Smith, Martha Curtis Washington.

Performing in a minute were Linda Shivers, Marilyn Smith, Laurie Miller, Sandra White, Gail Payne, Barbara Welborn, Lee Lyons, James Denmark, Greg Nichols, Bobby Ansley, Keith Thompson and Jimmy Weaver.

Reciting a Washington poem were Keith Thompson, Catherine Lane and James Denmark.

The play about Lincoln, based on the poem entitled "Nancy Hanks," by Rose Benet, was written by Susan Shaw. The poem was recited in its entirety by Richard DeSimone and the play was narrated by Daryl Townsend.

Others taking part were Greg Nichols, Lincoln's Farewell Address; Ronnie O'Neil, Gettysburg Address; Harold Lee as Lincoln, Walter Stevens as Lincoln's father, Jay Davis and Curtis Dorn, other Lincoln speeches and Laurie Miller, a vocal solo entitled "Young Abe Lincoln."

In charge of lights was Susan Shaw and stage hands were Bruce Willis, Mike Bennett and Vernon Wagner. Costumes were designed by Mrs. Elda Nichols.

Hospital Notes

FEBRUARY 21 Admissions

Timothy Lane Brumley, James P. Cullen, Geraldine Lott, Annie Mae Wilson, Maxine Marr, Vera C. Wight, Deanna Dietrich, Emella Carr, Myrtle Gradick, Lorene Taylor, James Daniels, Yvonne Sechrest, Gerald M. Davis, Bernice Hall, all of Sanford; Mildred Gier, Lake Mary; Rose Phillips, Osteen

Discharges
Robert E. Peurifoy, Judy Hoffman, Shannon Suggs, Susan Hodges, Paul Mansfield, Pearl Partin, Ethel Brewer, all of Sanford; John M. Byrn, DeBarry; J. C. McCarty, Longwood; Carl Bruloo, Jacksonville



AN EXTERIOR VIEW of the new English Estates Elementary School located in South Seminole County. This photo was taken with the camera looking in a southeasterly direction. (Herald Photo)

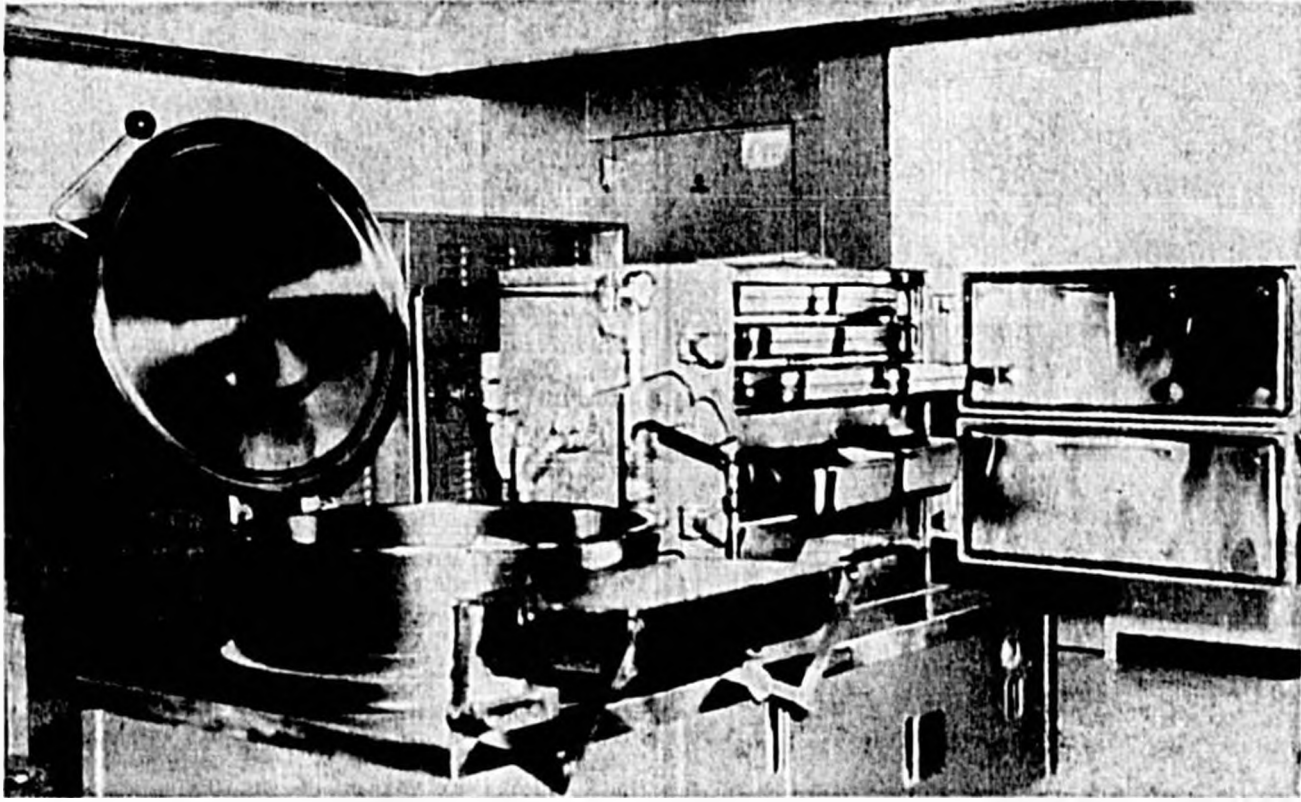
Teachers Ready For Opening Of School Building

For several weeks English Estates elementary school teachers have been engaged in preparing their various classrooms for the opening of the new facility. They have been accomplishing these tasks during morning hours and conducting their respective classes during the afternoon at the South Seminole Elementary School building where English Estates school classes have been held since the beginning of the current school term.

The school has three rooms for each of the first, second and third grades. The fourth, fifth and sixth grades will each have two rooms.

First grade teachers are Mrs. Beverly Deck, Mrs. Lou Westmoreland and Mrs. Alice Parry. Second grade teachers are Mrs. Sara Swosowski, Mrs. Edna McCarty and Mrs. Jean Thomas. Third grade teachers include Mrs. Lois F. Fallet, Mrs. B. J. Smith and Miss Linda Parrott.

Miss Anna Bandy and Mrs. Lucille Snyder teach the fourth graders, Mrs. Lorely Deame and Mr. Claude Boram the fifth grades, and Mrs. Nancy Hathaway and Virgil Duffell the sixth grades.



THIS GLEAMING STAINLESS STEEL, all electric kitchen at the new English Estates Elementary School building will be operated under the direction of Mrs. Marjorie Howe, manager of the school's lunchroom facility. The kitchen is completely equipped with the very latest appliances. (Herald Photo)

Income Tax Primer - 6

Education Can Be A Business Expense

By Charles W. Schueneman
Written for
Newspaper-Enterprise Assn.
(Sixth of 10 Articles)

In addition to the expenses for which you are not reimbursed by your employer, you can claim certain other business expense deductions simply because you are in the trade or business of being an employer.

These are entered under "other deductions" on Page 2 of your return.

An employer may also carry on his own separate business and qualify for business expense deductions in his own right. In one recent case, the Tax Court ruled that a full-time supervisory employee of an aircraft company was engaged in conducting a separate business in his basement

as a free lance inventor of electrical fuses. In fact, the court allowed the employee a business loss deduction.

But suppose a taxpayer is only an employee and conducts no separate business. What is he entitled to deduct other than certain travel, meals, lodging and transportation for which he is not reimbursed? One item is certain expenses of education.

Education expenses are deductible by an employer if the education is undertaken primarily for the purpose of either (a) maintaining or improving skills required in his employment, or (b) meeting the express requirements of his employer, or other legal conditions to the retention by the employee of his salary, status or employment. (However, the education cannot be required as a minimum requirement for the employee's being employed.)

The key factor in application of these tests for many persons is that under the "maintaining or improving"

test, the employee presumably must show only that the education was required by him in his employment. The education need not be required by his employer.

A recent case recognized this factor in allowing an employee (engineering aide) to deduct his night school tuition in view of the fact he did not go to school with the intention of obtaining a new or better position.

Most such education be customary for a person in the employee's position or among his associates to be deductible? A recent Tax Court case said "no" even though the IRS argued that such a factor was important. However, there must be some connection between the education and the employee's job to be deductible.

Furthermore, the IRS rules that you must be currently employed (or engaged in a business or profession) to deduct education expenses. If not, you may not deduct the cost of schooling to prepare to resume employment, etc.

A LAWN SPRINKLER SYSTEM IS A GOOD INVESTMENT IF IT IS PROPERLY DESIGNED.

LET US HELP YOU PLAN THE MOST EFFICIENT AND ECONOMICAL SYSTEM TO MEET YOUR NEEDS —

NOW AT NO ADDITIONAL COST TO YOU!

WALL SUPPLY
111 N. FRENCH AVE.
SANFORD, FLA. 322-5412
"Headquarters For Sprinkler Systems"

Driving more and enjoying it less?

Ted up with those tight squeezers?
A Rambler gives you plenty of hip room, plenty of headroom, and plenty of legroom for six big adults.

Swamped by car repair bills?
Wondering what's going wrong next? Rugged Ramblers are famed for trouble-free operation and they are the most rustproofed cars built!

Shaken by rattles?
Stuck with a rattletrap? Get a new Rambler with Advanced Unit Construction—solidest, most squeak- and rattle-free yet devised.

Get real driving pleasure—get a Rambler Classic

Only car with the Best of Both: big-car room and performance, compact-car economy and handling

No. 1 in compact-car sales **RAMBLER 6-cyl V8** No. 1 in usefulness to the user

BILL HEMPHILL MOTORS, INC. 301 West First Street, Sanford, Fla.

In Florida... after bowling, beer is a natural

After you've bowled a game or two, or when you're winding up the evening at the neighborhood bowling center, it's good to relax with friends and compare scores. What better way to add to the sport and the sociableness than with a refreshing glass of beer? However you take your fun—beer always makes a welcome addition to the party.

Your familiar glass of beer is also a pleasurable reminder that we live in a land of personal freedom—and that our right to enjoy beer and ale, if we so desire, is just one, but an important one, of those personal freedoms.

In Florida... beer goes with fun, with relaxation

UNITED STATES BREWERS ASSOCIATION, INC.
P. O. BOX 323 WINTER PARK, FLORIDA

The Sanford Herald
Feb. 25, 1964 — Page 5

VEGETABLE REPORT

Federal State Market News Service Sanford

Shipping point information for Feb. 24. All sales F.O.B. Precooling charges extra unless otherwise stated.

SANFORD-OVIEDO-ZELLWOOD DISTRICT
Clear, unofficial low, 30 degrees.

Cabbage: offerings light, market about steady. Domestic round type, 1 1/2 bu. crates, \$1.35 to \$1.50, best mostly \$1.50; 50 lb. sacks, best mostly \$1.25, poorer and small size, lower.

Carrots: demand good, market about steady. Sacks, 48-1 lb., film packed, \$2.05 to \$2.40; 50 lbs. loose, very few, \$1.85.

Celery: demand fair to good, market slightly weaker. 16 in. crates, Pascal type, 2 doz., \$4; 2 1/2-3 doz., \$4.25; 4 doz. and smaller, \$3.75; hearts, 24 count, film wrapped, \$4.75.

Chinese Cabbage: demand fair, market about steady. 16 in. crates, \$2.75 to \$2.90.

Endive: demand fair to good. 1 1/8 bu. crates, \$2.90 to \$3.

Escarole: demand fair to good. 1 1/8 bu. crates, \$2.50 to \$2.75.

Lettuce: offerings very limited. Leaf type, 12 qt. baskets, few, \$1.25; Romaine, 1 1/8 bu. crates, few, \$3.

Onions, green: demand light, market steady. Crates, 3 doz. bunches, \$3.

Parsley: demand light, market steady. Crates, 5 doz. bunches, \$2 to \$2.25.

Parsnips: offerings limited. Baskets, 12-1 lb., film packed, \$1.25.

Radishes: offerings light, market about steady. Baskets, film packed, red variety, 30-6 oz., \$3 cents in \$1; white variety, 24-8 oz., \$2.

Spinach: offerings light. Bushel baskets, Navy type, \$1.30 to \$1.75.

HARTINGS, FLORIDA DISTRICT
Clear, unofficial low, 28 degrees.

Cabbage: demand good for limited offerings, market about steady. Domestic round type, 50 lb. sacks, \$1 to \$1.25, best mostly \$1.25.

Farm Brief
U. S. overseas food programs have revolutionized Japanese eating habits. They now eat twice as much wheat, oil and fats, drink three times as much milk and eat four times as much meat as they did before the war.

TOUGH TIRE

for **SMALL TRUCKS**

\$15.95

6.00 x 14 plus tax and your responsibility

Other sizes equally low priced

THE HI-MILER R-C

FOR RANCH AND COMMERCIAL USE

- ✓ Anti the pins
- ✓ Tread the performance
- ✓ 5-PT Nylon cord
- ✓ Tug as you had

We've got it in your size!

GOOD YEAR

555 W. First St.
PH. 322-2821

NEW CONVENIENCE..NEW SECURITY

DAY AND NIGHT DEPOSITORY WITH LIGHT

LARGER CAPACITY

COMPARTMENT FOR STORAGE OF SUPPLIES

SHELF FOR WRITING

Our Bank IS NEVER CLOSED To Its Depositors!

The Safe is the safest dual depository ever made and has been awarded the Underwriters Laboratories Inc. Seal of Approval for providing Maximum Security in both bag and envelope sections of the receiving entrance.

The SANFORD-ATLANTIC-

NATIONAL BANK

"It's a Pleasure to Bank at the Atlantic"

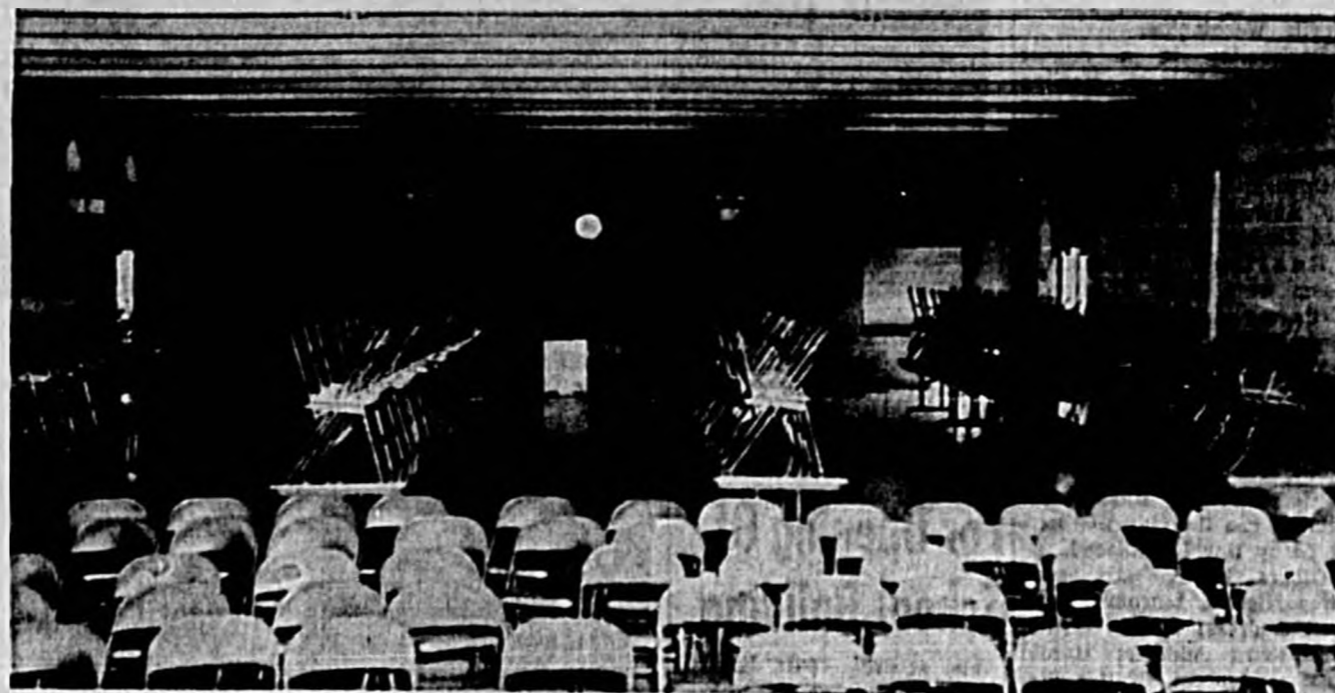
MEMBER F. D. I. C.

• Commercial • Industrial • Institutional

HARRY F. BECKHAM Jr.
 Painting Contractor
 P. O. Box 6108 Orlando, Fla.
 Ph. 644-2877

English Estates School One Of 'Most Modern'

By Julius Stenstrom
 From the main office to custodial rooms the new English Estates Elementary School building is all it has been billed to be—the most modern structure of its kind in Seminole County, perhaps even in Central Florida. And as far as we are concerned the 418 children who will occupy the new plant are the luckiest students in the history of Seminole County. As one observer said, "some of these sixth graders probably will find ways and means of remaining over for at least a full year in the modern, air-conditioned, climate controlled building." The main entrance to the building is situated in the southwest corner of the struc-



THE CAFETERIUM at English Estates Elementary School can be used as a lunchroom, an auditorium, and for large group class instruction. The above photo was taken from the cafeteria stage looking toward the kitchen area.

Note the fly fans over the door at the right rear of the lunchroom area. The light fixtures on the rear wall are emergency lamps which will be turned on in the event of a power failure. (Herald Photo)

there are speakers located at various points outside the building. All rooms are equipped with clocks which operate from the master clock in the main office. The architect was John Burton IV and the general contractor was Jack Jennings, Orlando.

Safety Feature Is Outlined

Arrivals and departures of the new English Estates Elementary School will be accomplished in a most orderly manner, according to the school's principal, Morris Ruby. Ruby said today that county school buses would load and unload students on the east side of the building and that this area is being reserved for use as bus ramps only. Parents driving students to the school will be required to drive their children to the west side of the building and also pick up their children there. Ruby said this is another safety feature of the new school.

Buckwheat is a grain plant important in production of honey, according to the Encyclopedia Britannica.

Recipe for a GOOD SCHOOL

- 1 Part
PROGRESSIVE SCHOOL BOARD
- 1 Part
HOLLOWAY Ready Mix Concrete
- 1 Part
HOLLOWAY Concrete Blocks
- 2 Parts
HOLLOWAY Precast
(Beams and Roof Slabs)

THESE INGREDIENTS

used in the construction of

ENGLISH ESTATES SCHOOL

Holloway CONCRETE PRODUCTS

"Build the Better Way with Holloway"

WINTER PARK
644-4100

SANFORD
322-3362

ture. Doorways open into a large main office equipped with modern counters and storage compartments for school supplies and records and a public address and communications system. Off the main office is Principal Morris Ruby's private office and another office to be utilized as a private conference room.

Next door to the school's clinic which even has private recovery rooms. Adjacent to this is the beautiful teachers' lounge plus a teachers' work room. Separate exits lead from the lounge and the clinic to the stage of the cafeteria which permits the lounge and clinic to be used as separate dressing rooms when need for various types of school functions.

The cafeteria is well lighted and beautifully equipped. Above doors leading into the cafeteria are fly fans which will make the large room virtually fly proof. At the west end of the room is a stage. At the opposite end is the stainless steel, all electric kitchen.

What happens if the power supply goes off? The school is equipped with auxiliary or emergency lights in the cafeteria and in the corridors. There are no windows in the building since it is completely air-conditioned.

The kitchen is divided into three main areas—a food preparation center, manager's office and dishwashing room. The school has a large room designed to be the library which has what all school librarians would like to have, a work room with the necessary plumbing. The library also has a private office for the librarian.

The upper grades—third, fourth, fifth and sixth, will occupy the large group rooms. These rooms can be closed off into three separate classrooms by folding doors, which, by the way, weigh 1,400 pounds each. However, they can be manipulated with ease. When opened, the rooms can be used for large group instruction. The large group rooms are equipped with closets, cabinets and counters which are on casters and can be rolled with ease when a rearrangement is desired.

There are rest rooms in all of the wings of the building for the boys and girls and also for teachers. In the primary classrooms, each room has its own rest room facilities. Lights in all of the rest rooms are controlled from a central panel. This will eliminate some youngsters from turning off the lights, intentionally or otherwise, and throwing the restroom into

pitch-black darkness. The plant is geared to accommodate 450 students. Ruby says that the number could climb to 525—or 114 more than are now enrolled—before added facilities would be required. However, he pointed out that the building has been constructed in such

a way that five new classrooms could be added and connected to present supply facilities such as the heating and air conditioning system, etc. All rooms are connected with the main office and with the principal's office by public address systems. Also

We're Proud

to have been part of the team of builders and suppliers responsible for the splendid new

English Estates School

in Seminole County

JENNINGS & JENNINGS INC.

ARCHITECTURAL MILLWORK
 1032 Wilfred Dr. Orlando
 425-9961

P. DELBERT
Dalrymple
 PAVING, Inc.

"A Name You Can Trust"

ALL TYPES PAVING

Residential • Commercial • Industrial

1340 Palmetto Ave. Ph. 647-1871 Winter Park, Fla.

DUNN BROS.

HARDWARE

"The Store with a Million Items"

furnished the
 SCHLAGE Locks and
 other Hardware items

for the new

English Estates School

— Call, Write or Visit Us —

154 S. BEACH ST.

DAYTONA BEACH

CL 2-5551

In the new

English Estates School

We installed sound-insulated folding partitions, which allow the classrooms to be made larger or smaller in minutes. Modern teaching methods require "Inner Space Control."

P. J. Oxford

BUILDING SPECIALTIES

1719 CANTON AVE.

ORLANDO

424-8003

INSTALLING DISTRIBUTORS — COMMERCIAL & INDUSTRIAL
 Latest Vinyl Wall Coverings for Interiors

'Climate Controlled' School Offers Challenge

By Julian Stenstrom
School teaching and school administration are nothing new to Morris Ruby, a native of Mississippi who is principal of English Estates Elementary School. But it's the first time in his school experience



MORRIS RUBY, principal of the new English Estates Elementary School, is pictured greeting The Herald's staff photographer, Bill Vincent Jr., in the main office of the school's new air conditioned plant.

District PTA Meet Scheduled Next Monday

By Julia Bartos
The Parent-Teacher Association of the Altamonte Springs Elementary School was host to the regular meeting of the Seminole County of PTAs.

Themes for the program was Founders Day and representatives from each of the five schools forming the council, introduced by Mrs. Joe Pavelchak, chairman, gave a brief history of their school in order of its age with Lyman coming first followed by Pinecrest, Altamonte, South Seminole Junior High and Bear Lake Elementary.

Special guests for the morning, who also gave short talks, were Mrs. G. Bruner, eight district president, and R. T. Milwee, superintendent of schools.

During the business session, with P. W. Simpson presiding, plans were completed for the district 8 conference to be held at Pinecrest School next Monday beginning at 9 a.m. Luncheon will be available at the school.

All PTA members are welcomed and urged to attend as a tour of Sanford Naval Air Station is scheduled for the afternoon.

Judge Bowden Hunt will be principal speaker for the morning session and Mrs. Nathan S. Rubin, president-elect of the Florida State PTA, will also speak.

The next meeting of the Seminole Council will be held on April 16 with the location to be announced.

as a principal that he will be responsible for the occupation and operation of a brand new school facility.

Although it doesn't appear on the surface, Ruby is really elated that the time is rapidly approaching when the English Estates facility will throw open its doors for the

Shrine Club To See TV Stars

"The Great Volta" and his television stars will appear Thursday night at a meeting of the Sanford Shrine Club.

An Old-Timers Frontier Dinner" is being planned by Al Skinner for the event which is scheduled to start at 6:30 p. m. Shrine Club members have been asked to bring their ladies.

Ernest Southward is in charge of the program arrangements.

President Roy G. Williams has asked members to contact any officer of the club for reservations.

In addition to Williams, the officers include:

First vice president, LaRoy C. Robb; second vice president, Ralph Wight; secretary, R. C. Whitmire, and treasurer, A. L. Skinner

Elementary School in Caselberry, awaiting the completion of the new facility being dedicated tonight.

Ruby's original ambition was to enter the ministry. In fact, he served the ministry four years before deciding to enter the field of education. He is still serving as a part time minister—as pastor now of the Church of Christ on SR 46 at Paola.

Of all his teaching and administrative experience, Ruby is convinced that the new "climate controlled school"—as he refers to it—pre-

sents his greatest challenge. "It's also a challenge to everyone connected with it," Ruby declares.

"We feel that a great deal more can be accomplished by our students due to the fact that heat, noise and outside distractions will be virtually eliminated in this type of air-conditioned school. With continued cooperation from the parents

of our children nothing should prevent English Estates being second to none."

Custodians Named

Principal Morris Ruby of the new English Estates Elementary School has announced that Walter Drusus and James Davidson had been selected to serve as custodians of the new plant.

Full Sessions Are Scheduled

The new English Estates Elementary School, which has been on afternoon sessions only since it began operating last fall using the South Seminole Elementary School plant in Caselberry, will go of full time sessions when it moves into its own new, air-conditioned facility.

Morris Ruby, principal of the English Estates school, said today that school hours will be from 8:30 a. m. until 3 p. m., Monday through Friday.

Seminole County school buses will serve the Tanglewood, Lake of the Woods and Prairie Lake areas. Children residing in the English Estates subdivision will be permitted to walk, come by auto, or ride bicycles if they so desire, Ruby said.

School buses will pick up children in the Prairie Lake and Lakeview Shores sections around 7:30 a. m. Children in the Tanglewood area will be picked up around 8 a. m.

Douglass Talks Here Tonight

Dr. Paul Douglass, professor of practical politics at Rollins College, is making his annual visit to Sanford tonight to tell of "Political Conditions in the World Today." He will speak at the Congregational Church at 7:30 tonight.

The meeting is held under the auspices of the Men's Club. Light refreshments will be served and the general public is invited to be present.

Dr. Douglass will bring some of his students with him. A group is expected from the political science department of Seminole High School.

In Seminole County's

newest, most complete school building, the

English Estates Elementary School,

We furnished and installed the
AIR CONDITIONING and HEATING
by Trane

also the quality
Fixtures and Plumbing
by Crane

LEE BROTHERS

Plumbing, Heating
Air Conditioning

210 Elm Ave.

323-0858

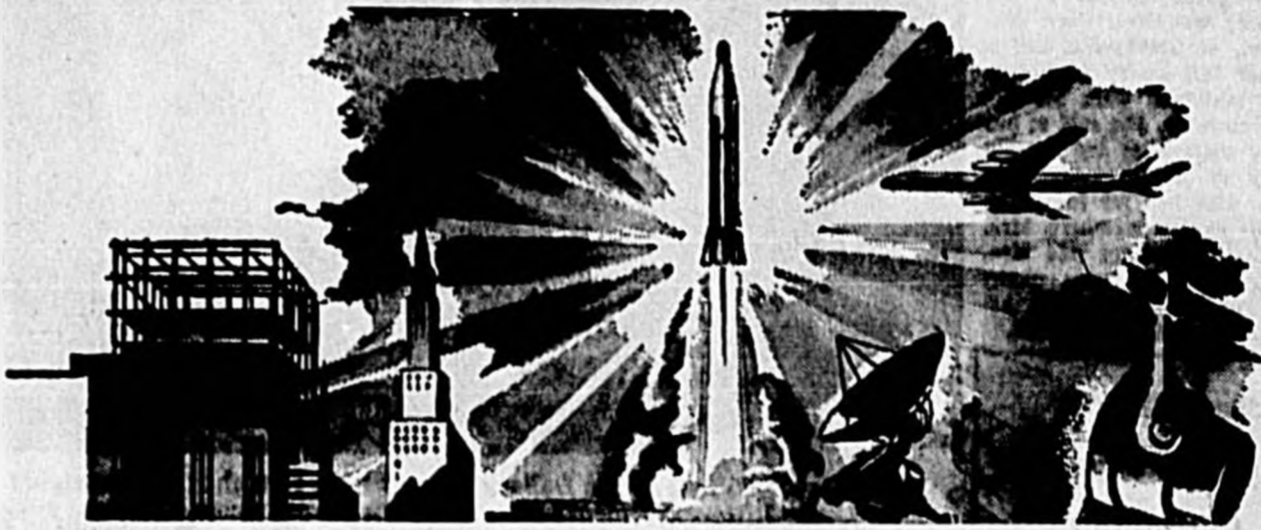
Sanford, Fla.

ZONOLITE Roof Deck

Poured In Place
by

H. C. Buchanan Concrete, Inc.

1410 Atlanta Ave.
Orlando, Fla.



In this Modern Age...

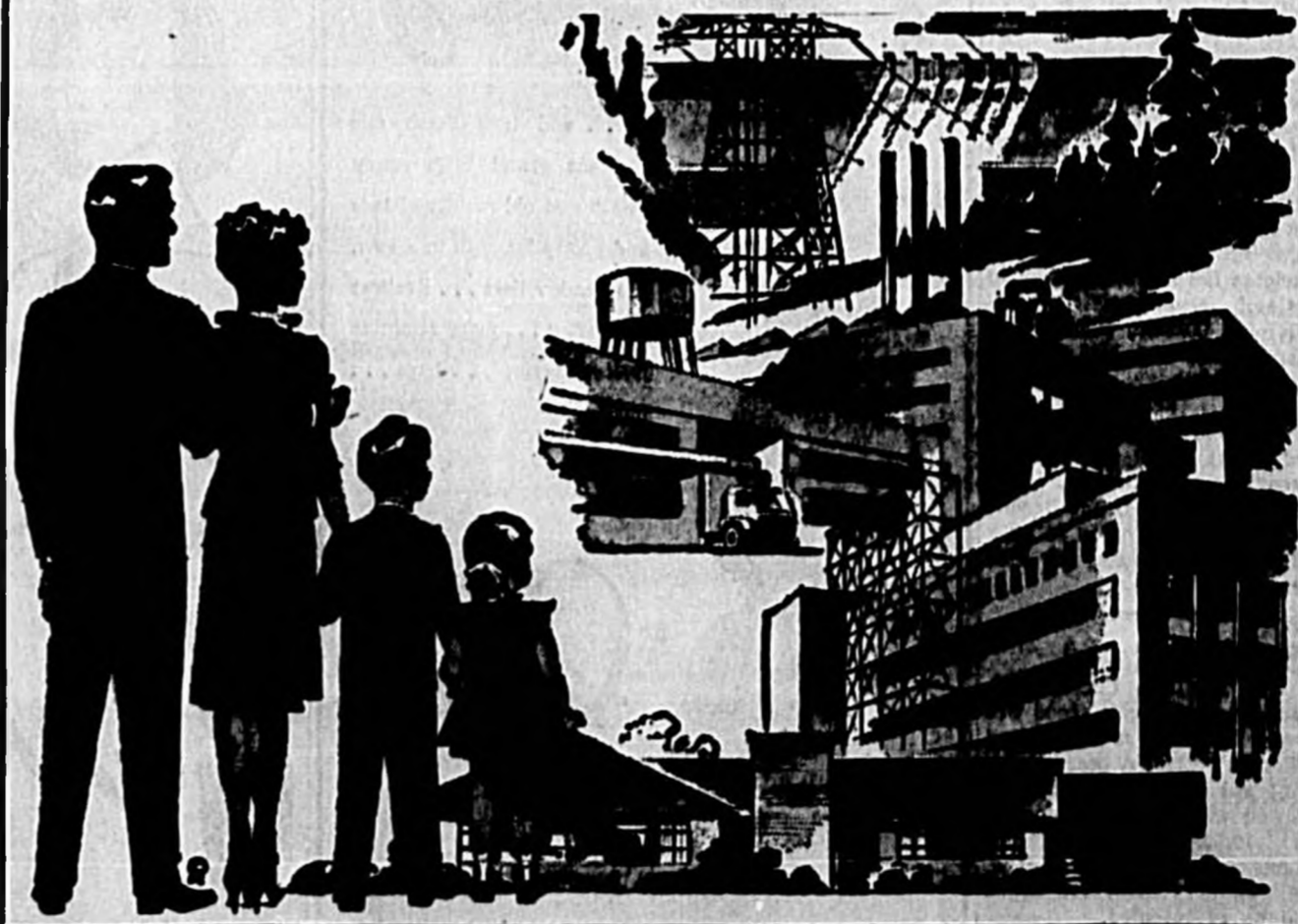
WE'RE EXCEPTIONALLY PROUD TO
HAVE BEEN IN CHARGE OF THE
CONSTRUCTION OF SEMINOLE
COUNTY'S NEWEST, MOST UP-TO-DATE
EDUCATIONAL FACILITY

English Estates Elementary School

Jack Jennings

GENERAL CONTRACTOR

ORLANDO, FLORIDA



Clark Electric INC.

INSTALLED THE
Wiring and Fixtures,
TV
Fire Alarm
Program System

Commercial — Industrial — Residential
Wiring

Ph. GA 4-4538

ORLANDO

We are proud of our part
in the construction of the new
English Estates Elementary School

Reliable Glass Co.

GLASS AND GLAZING
ENTRANCE DOORS
INSULATED METAL PANELS IN TRANSOMS
MIRRORS

• • •

Ph. 423-4401

2112 W. Central Blvd., Orlando, Fla.

Former Korean Missionary Speaks At Church Supper

By Mrs. Adam Muller
The Women of the DeBary Presbyterian Church sponsored a covered dish supper at the church Social Hall. Rev. A. C. Summers gave the blessing. A meeting was held later in the Sanctuary.

The guest speaker at the meeting was Mrs. Chris Matheson, of Gainesville, and a former missionary to Korea. Mrs. Matheson wore her Korean costume. She told of her living while there and brought many of her treasured objects with her for inspection by the church members. Mrs. Gustave Denninger and Mrs. Bertrum Gould were chairmen of the supper and assisted by their committees.



DINNER MEETING in the DeBary Presbyterian Church. (Left to right) Mrs. Louis Ritter, president; Mrs. Chris Matheson, former Korean missionary; Rev. Augustus Summers, pastor; Mrs. Gustave Denninger and Mrs. Bertrum Gould, chairmen for the dinner.

Miss Johnston Captures Scene At Gathering

Miss Elma Johnston captured the scene as she presented an interesting book review of Sybil Hathaway's "The Dame of Sark" at the monthly meeting of the DeBary Women's Club at the Community Center. Miss Johnston, with her concern for books, always seems to pick the authors who have something to hold their readers' interest. Mrs. Charles Ulrich presided over the meeting and welcomed the members and guests. Mrs. Herbert Vitt was accepted as a new member. Serving at the tea table, following the business session, were Mrs. A. E. Spokes and Mrs. Gaston Crosby. They were assisted by Mrs. Theodore Culley, Mrs. John Diehl and Mrs. Ivan Walker. The buffet table was overlaid with an antique lace cloth, centered with a white swan, filled with white roses. Trays of cherry cake, crystal and silver appointments completed the table. The speaker's table was centered with a floral arrangement of pale pink camellias in a white vase.

Susan Skinner Initiated Into Sorority

Miss Susan Lynn Skinner, daughter of Mr. and Mrs. A. L. Skinner, was initiated into Eta Omega Chapter of Alpha Iota Sorority, Jones College, at Jacksonville, recently.

Miss Skinner was one of 37 girls honored by election to Alpha Iota, International Business Sorority, and was a guest at a banquet at the S & S Cafeteria, Jacksonville. Requirements for election to this honorary organization are superior scholarship, leadership, personality, and character. Chapters of Alpha Iota are affiliated with outstanding business training colleges in the U. S., Canada and Hawaii.

Miss Skinner is a graduate of Seminole High School and is now furthering her education at Jones College. She is to be congratulated on the excellent record she is making.

Susan L. Oyler Given Shower

Miss Susan Oyler was recently feted with a kitchen shower. Mrs. O. P. Wade and Mrs. R. D. Hackett were hostesses for this affair and presented the honoree with a gift.

The guests were served pink heart shaped cakes and punch. The refreshment table was decorated with pink and white candles and flowers.

Those gathering for the shower were Mrs. W. C. Oyler, Mrs. Nancy Chancey, Mrs. R. L. Johnson, Miss Betty Carpenter, Mrs. D. C. Carpenter, Mrs. John Buhl, Mrs. K. G. Soderblom, Mrs.



SUSAN OYLER

Reginald Soderblom, Miss Linda Soderblom, Miss Diane Bolton, Miss Rose Mary Jet, Mrs. C. W. Erull, Mrs. C. C. Hannar, and Mrs. Milton Hannar, Mrs. Sally Johnson, Mrs. Bill Albertson and Miss Maria Albertson.

DeBary Choristers Present Music Program

By Mrs. Adam Muller
The DeBary Choristers presented a program of music at the DeLand Lutheran Retirement Home. Laura Platt Brown directed and Theresa Kupecz was the accompanist. The music presented was a varied program interspersed with mirth, dances by Carolyn Little and Mabel Green, a poem by Mrs. H. Dentler, "The Two Seas," and a contralto solo by Beatrice Muller. Refreshments were served in the lounge following a brief social. Mrs. Ed Iovanna was the flag bearer during one of the patriotic numbers.

Penny Pinchers Gather For Dinner, Social Hour

Penny Pinchers Club met for a covered dish dinner and social hour at the Policeman's Benevolent Hall recently. Mr. and Mrs. R. T. Humphrey and Mr. and Mrs. J. B. Fields were the hosts.

The dining tables were decorated in a Valentine theme, with small Valentines marking each place.

F. B. Langley gave the invocation. The door prize of a handcrafted jewelry box, made by J. B. Fields, was presented to Mrs. J. N. Gillon. A guessing contest was held and a prize awarded to Mrs. H. L. Moore.

Thirty-three members were present and seven guests.

DeBary

Personals

Mr. and Mrs. William Ogden, of Estrella Road, returned this past week from Hollywood where they attended the 22nd wedding anniversary of their daughter and son-in-law, Mr. and Mrs. Mitchell Cholley. A dinner party was held at the Deauville Hotel in Miami, also honoring Miss Dorothy Cholley, granddaughter of Mr. and Mrs. Ogden, on her birthday.

Mr. and Mrs. Jene Braun of Wayne, N. J., were the recent guests of Mrs. L. Beck, of Colomha Road. The Brauns were en route home to New Jersey from a stay at Fort Myers.

Session Slated

The Seminole County Federation of Women's Clubs will meet Thursday at the Sanford Woman's Club. A board meeting will begin at 10 a.m., followed with a general meeting at 10:30. A covered dish luncheon will be held at noon. All member clubs are urged to be represented.

Everything's Coming Up . . .

Spring



... and how fresh our fashions grow! With sunny prints and old fashioned lace and pretty hues all in a row. It's the loveliest . . . liveliest . . . softer . . . more feminine look of Spring . . . here . . . now!

Lo Jay

Accredited Charge Accounts Welcomed

Free - Shocking by Schiaparelli \$3.00 Size

PERFUMES

with the purchase of any

Playtex®

Living

Bra

at

Garrett's

200 E. First St. Downtown Sanford

Jointly Sponsored In Social Hall

The Women's Society of Christian Service and the Methodist Men's Club of the DeBary Community Methodist Church jointly sponsored a Smorgasbord held in the social hall of the church recently. During the three serving hours more than 500 people were served.

Mrs. Ruth Creay was overall chairman. She was assisted by members of the WSCS, the Methodist men, and the youth of the church. Mrs. Everett Swift and Mrs. Harold Coffin were in charge of the tickets. They were assisted by Harry Bell and Mrs. O. Potter in the dining room.

Miss Adelaide Conte was at the organ console playing background music as the guests waited their turn to enter the dining room.

The buffet tables were laden with shrimp and turkey salad, sliced jello salads, cheese dips, crackers, coffee and rolls, different breads and rolls, coffee and a dessert.

Learn Market Facts About Meat And Quality

Myrtle Wilson, Home Demonstration Agent, says while you are marketing learn all you can about meat since it claims one-fifth to one-fourth of the food budget. Look for the round purple stamps used for marketing meat that shows it has passed federal inspection.

Watch seasonal buys on meat. High quality meat is indicated by fine grain, firmness and moisture, with firm fat in outer edge and marbling throughout flesh.

On March 10 the public is invited to a free meat Cooking School at the Civic Center. Martha Logan, of Swift and Company, will demonstrate the latest in meat cookery. Recipe books will be given to all.

Something NEW

is coming to WES - KAY Washeteria 2010 French Ave. See Thurs. Herald



ENTERTAINERS at the American Legion Post 250 Auxiliary musicale and tea recently in the DeBary Community Methodist Church social hall. (Left to right) John Cornwall, baritone soloist of DeLand; Elmer Thompson, accordionist; Mrs. Louis St. Amand, soprano soloist and chairman of the event, and Miss Adelaide Conte, organist and piano accompanist, who played several well known McDowell selections on the organ console.

Impromptu Poems Hold Attention Of Sorority

"Poetry in Motion" filled the air when Carol McCabe and Claudia Blythe presented a program on the components of poetry, reason for poetry and several works of great poets.

Each member of Beta Sigma Phi was asked to write an impromptu poem and present it to the group.

This meeting was held at the home of Barbara Jones, who served her guests coffee

and strawberry shortcake. The group discussed its plans for the coming rush parties to welcome new members. A brunch will be held at the home of Claudia Blythe on Feb. 29.

AFTERMATH

By Janet Henry
The countdown reaches zero; The school bus roars away, And Mother, pale and shaken, Starts sorting out the day.

Bobbie Morton, James Orphield Plan Wedding

Mr. and Mrs. R. L. Morton, Sanford, announce the wedding plans of their daughter, Bobbie Morton, and her fiancé, James Reed Orphield, of Jacksonville.

The ceremony will be held at the Island View Baptist Church in Jacksonville. All friends are invited to attend the wedding on March 7 at 3:30 p.m.

Nothing Else Fits — Nothing Else Wears Like Genuine

LEVI'S

AMERICA'S FINEST JEANS - Since 1850
Denims & Casuals
Open Fri. Nights
Jim Robson
MEN'S WEAR
115 Magnolia Sanford
Phone FA 2-1335

SPECIAL THIS WEEK ONLY!

NEW 2 PIECE LIVING ROOM SUITES \$69.95

JENKINS FURNITURE STORE NEW AND USED FURNITURE 400 S. SANFORD AVE. PHONE 322-7450

FEB. 25th THROUGH 29th ONLY!

Penney's

ALWAYS FIRST QUALITY

20% off Penney's new spring sportswear fabrics

FIRST TIME EVER . . . Penney's reduces prices on our best selling sportswear by-the-yard and the values are terrific! Buy and sew ahead of the season . . . save more than you thought possible on Penney's Own quality denims 'n sailcloth, Dan River's popular Danstar! Here are top Spring patterns, textures 'n colors . . . and now, for a limited time only, they're ticketed 20% OFF Penney's already low, low prices . . . SHOP EARLY!

COTTON DENIM SOLIDS, MANY COLORS! Lots of colors in a perennial favorite with new quality features . . . machine washable, Sanforized®, quick drying, easy ironing! Fabulous buy! reg. 59c yd. NOW **47c yd.**

COTTON DENIM STRIPES, CHECKS, PLAIDS! Patterns 'n colors to inspire many a fashion outfit or decorating approach! Machine washable, Sanforized® 'n colored to coordinate with our solids! reg. 69c yd. NOW **55c yd.**

PENNEY'S QUALITY FULL SAIL PRINTS, SOLIDS! Penney's famous cotton sailcloth . . . crease resistant, machine washable, little or no ironing! A host of solids plus new prints for Spring! reg. 79c yd. NOW **63c yd.**

DAN RIVER'S DANSTAR PRINTS, SOLIDS! Popular color-coordinated prints 'n solids in a combed cotton with lots of class . . . machine wash 'n wear, little or no ironing, crease resistant! Stock up today! reg. 98c yd. NOW **78c yd.**



Legal Notice

In the Court of the County Judge, Seminole County, Florida...

In the Court of the County Judge, Seminole County, Florida...

In the Court of the County Judge, Seminole County, Florida...

In the Court of the County Judge, Seminole County, Florida...

In the Court of the County Judge, Seminole County, Florida...

Legal Notice

In the Court of the County Judge, Seminole County, Florida...

In the Court of the County Judge, Seminole County, Florida...

In the Court of the County Judge, Seminole County, Florida...

In the Court of the County Judge, Seminole County, Florida...

In the Court of the County Judge, Seminole County, Florida...

Legal Notice

In the Court of the County Judge, Seminole County, Florida...

In the Court of the County Judge, Seminole County, Florida...

In the Court of the County Judge, Seminole County, Florida...

In the Court of the County Judge, Seminole County, Florida...

In the Court of the County Judge, Seminole County, Florida...

Legal Notice

In the Court of the County Judge, Seminole County, Florida...

In the Court of the County Judge, Seminole County, Florida...

In the Court of the County Judge, Seminole County, Florida...

In the Court of the County Judge, Seminole County, Florida...

In the Court of the County Judge, Seminole County, Florida...

Legal Notice

In the Court of the County Judge, Seminole County, Florida...

In the Court of the County Judge, Seminole County, Florida...

In the Court of the County Judge, Seminole County, Florida...

In the Court of the County Judge, Seminole County, Florida...

In the Court of the County Judge, Seminole County, Florida...

CHRYSLER AIRTEMP HEATERS advertisement

Advertising Phone Numbers and News section

Work Of Art Association Is Explained

By Helen P. DeWitt
 Many people who attended the annual exhibit of the Sanford-Seminole Art Association have inquired about the people who comprise the membership. They also ask, "Do all of them paint?"

The pictures on display in the adult section of the recent show were painted by approximately 50 per cent of the members. Some of these devote most of their time to painting pictures either for sale or for teaching purposes. They exhibit their work in many places. In some instances, their work is also a source of income.

The balance of those who paint do it primarily as a hobby. Of these, some are employed and can devote only a limited amount of time to their painting. Others paint because they need a personal means of expression aside from their routine activities. Many are retired persons who for the first time in their lives are able to enjoy doing something they have not previously had the

time to accomplish. All of these people are striving to improve their work and find fellowship with others and a sharing of knowledge and inspiration as members of the art association. This is the purpose for which the association was founded.

Another purpose of the organization is to promote

among the people of this area an interest in the appreciation of art and to develop an understanding of its importance to a balanced climate of interests which is necessary to the cultural and economic growth of the nation.

The non-painting members share an interest in this particular purpose.

Some attend the association's meetings at which speakers tell of various styles of painting and the different media employed. Seminars on art appreciation and art history provide an opportunity for participation in question and answer sessions. Demonstrations showing how a picture is created are fascinating to all members — both paint-

ers and non-painters. Also among the non-painters are those members who have joined to show their interest and to lend their support to the efforts being made to establish in their area a solid cultural atmosphere.

Members of the art association need an organization because they need one another. The association is now

in a position to welcome new members, painters and non-painters, who are interested in the organization's program. Some of those among the non-painting group have been inspired to try their hand at painting and have uncovered their own hidden talent. Some of their work is displayed at exhibits sponsored by the association.

Village Clerk Sets Special Office Hours

Announcement that the village office in North Orlando will be open from 7 until 9 p.m. Thursday for voter registration and from 9 a.m. until noon on Saturday for candidates to file last minute qualifying petitions was made today by Mrs. Barbara Peters, village clerk and supervisor of registration.

All residents of the village, even though they have previously registered, must register this year in order to be eligible to cast a ballot in the March 17 elections for two council posts and a five-member Citizens Charter Board.

Books will close at 4 p.m. Friday and no voter registration will be made after this time. Candidates for both the council and the charter board must qualify before noon on Saturday.

To date, petitions have been picked up by Harold Wilkes, Mrs. Mona Grinstead and Robert Stephenson who presently serve on the council.

Paul P. Pezold Rites Wednesday

Services for Paul Peter Pezold, who died Sunday, were announced today by Grambow Funeral Home.

The Rosary will be chanted at 8 p.m. today at Grambow's Requiem Mass will be at 11 a.m. Wednesday at All Souls Catholic Church followed by burial in All Souls Cemetery.

Pallbearers will be Edward Simon, Carl Von Herbulis, Ted J. Michels, Robert H. LeFils, Ed Callan and George DeMatteo.

Honorary pallbearers will be F. E. Roumillat Jr., William Livingston, Elmo Grady, Henry Richter, A. O. Von Herbulis, Joe Asarallo, Hamilton Biebes, Dr. Vincent Roberts, Dr. C. F. Brooks Smith, John Piarro, Emmett Kinlaw, Harry Zimmerman, Eugene Stillings, J. G. Haderer, Jack Ludwig, Anton Michels, T. S. Rumbley, Paul Brufka, A. E. Sikos, Theo Sidles and T. J. Demora.

Cradick Infant Son Dies

Eugene Anthony Gradick, infant son of Gunnery Sgt. John E. Gradick Jr., USMC, and Mrs. Gradick died Feb. 21 in Jacksonville, N. C.


Survivors are the parents, five sisters, and one brother and grandparents, Mr. and Mrs. John E. Gradick Sr., of Sanford, and Mr. and Mrs. M. E. Thompson, of Aberdeen, Miss.

Church Supper Scheduled


By Maryann Miles
 A family night covered dish supper will be held Wednesday at 8 p.m. at St. Andrews Presbyterian Church, Cecelia Drive, Bear Lake.

All members and friends of the church are invited to attend. A study course will follow.

Trailways treats you like "company" (maybe better!)



It's so nice to go Trailways! Our highly-trained travel experts bend over backwards to answer your questions courteously, completely. Help you select the most scenic routes. Smooth out every detail so you enjoy a happy trip on America's most modern buses.



From Sanford to	One-way
NEW YORK	\$21.54
5 thru Express trips daily	
MIAMI	\$ 6.88
Over 1 hour faster	
ORLANDO	\$ 6.88
5 convenient trips daily	
DENVER	\$48.30
Thru service via Birmingham-Memphis	

TRAILWAYS BUS TERMINAL
 Cor. Park & 2nd St. 222-4880
 DEBARY TERMINAL
 1226 W. Church Street, DeBary


TRAILWAYS

WEATHERS HAVE FOUND THIS TRAVEL PLAN FOR MEMBERS AND ORGANIZATIONS!

Carlton

FLAVOR-FILTER

ANALYSES OF THE SMOKE OF SAMPLES OF CARLTON CIGARETTES ARE MADE PERIODICALLY BY AN INDEPENDENT RESEARCH LABORATORY. ANALYSES DURING THE MOST RECENT TEST PERIOD PRIOR TO THE MANUFACTURE OF THE CIGARETTES IN THIS PACKAGE AVERAGED:



"TAR" 2.5 MG PER CIGARETTE

NICOTINE 0.4 MG PER CIGARETTE

*SMOKE COMPONENTS COMMONLY BUT INACCURATELY CALLED "TAR"

Look again.

This is Carlton, the unusual new cigarette from The American Tobacco Company. Everything about Carlton is selected and crafted to produce this one result: (Low "tar" and nicotine, with real smoking pleasure.) It is so low in "tar" and nicotine we print test results on all packs and cartons. ■ Carlton has a distinctive blend, high porosity paper, special air vents, and a new "flavor filter" with activated charcoal which actually enriches the taste. ■ We believe you'll want to try Carlton. We also believe you will find it a new and pleasurable smoking experience. Give Carlton the time it takes you to smoke a carton.

See for yourself.

LOOK !!

\$14⁵⁰

Innerspring Mattress Renovation Special

Includes:
 • Cleaning & Preparing Felt
 • Brand New Cover for Mattress
 • Brand New Insulation where needed

SANFORD
 119 Magnolia Avenue
 Phone FA 2-4321

Echols

FREE PICKUP and DELIVERY

