

Literary Bit

ACROSS

1 English essayist
5 One of Parry's "Lute"
8 English poet
12 Persian poet
14 Agon
15 Manuscript
16 Nothing
18 Painful
19 Actress
20 Barbo
22 Ontario (ab.)
24 The
25 Produced a book
29 Heron
32 Chest bone
34 Among
36 Rock widge
37 American inventor
38 Ache
41 Charged atom
42 Squander
44 Spider (cookery)
45 Hesperian pepper
46 Bombast
49 Weather
53 Feminine opposition
57 Speech
60 Girl's name
61 Shield bearing
62 Peer Gynt's mother
63 Short jacket
64 Leg
65 Pigeon
66 Floccets

DOWN

1 Protracted
2 Roman god of one
3 Spouse
4 Nave of a Britney
5 Biped
6 Masculine bacchanals
7 Windstorms
8 Impromptu
9 Woodwind
10 Unsuited
11 Summers (Fr.)
12 Pleasure
13 Baphoric
14 Italian coin (ab.)
15 Small island
16 "Land of Eden"
17 Wading bird
18 Mexican
19 Andersen painter
20 King (Sp.)

WIN AT BRIDGE

By OSWALD and JAMES JACOBY

NORTH (D) 14
A A 4
K 10 7
A K J 10 6 3 2
A 9 4

WEST EAST
K Q 10 6 A 7 5 4 3 2
K 3 4 W 2
Q 4 1 8 5
K 7 3 2 A 6 5

SOUTH
A Q J 8 6 5 4
K 10 7
A Q J 10
Both vulnerable

West North East South
Pass 1 4 Pass 2 W
Pass 3 4 Pass 4 W
Pass 5 4 Pass 6 W
Pass 7 4 Pass 8 W
Pass 9 4 Pass 10 W
Pass 11 4 Pass 12 W
Opening lead - K 4

Diet May Aid Hearing Loss

DEAR DR. LAMB - I have had Meniere's disease for 26 years. The hearing in my right ear deteriorated first. After about 15 years my left ear started to go.

I no longer have the serious vertigo I had the first 15 years, only occasional slight dizziness, particularly when I roll over in bed, rarely when I am upright. I was wearing aids on both ears. The sound distortion, however, is becoming more serious and I am concerned about being able to continue working which requires talking to others and on the phone.

Last year I heard about a doctor who had some success in restoring hearing in Meniere's patients using a low cholesterol diet.

My other health is fine. I am 54 and weigh 130 pounds and am 5 feet 2. I would certainly try a diet if it would help my hearing. Thank you for any advice you can give.

DEAR READER - Your case is unusual because it involves both ears and began at such an early age. Meniere's disease more often begins in middle life.

The benefit of other readers the disease is characterized by dizziness (vertigo) that makes a person have a sensation of motion, loss of hearing and ringing or buzzing in the ears. Unless there is an associated hearing loss it is not true Meniere's disease.

A person with this disease may feel fine except during attacks. The attacks may be associated with nausea and rarely vomiting, somewhat like motion sickness. During the attack the eyes may be seen to move back and forth in jerky movements called nystagmus.

As the hearing is lost dizziness disappears as it has in your case. Hearing loss is progressive so the dizziness sensation seems to burn itself out in time. The attacks are treated with medicines used to treat motion sickness.

The cause of the disease is unknown. Some authorities think it is caused by an accumulation of excess fluid in the delicate balance apparatus inside the ear. These canals are

Dr. Lamb

...somewhat like a carpenter's level send signals to the brain about the position of the head. When they are inflamed or accumulate fluid or are otherwise damaged they send false signals to the brain, just as a faulty carpenter's level could give misinformation. The brain then is confused, causing sensations of motion.

You can have the sensation of dizziness or vertigo from other medical problems, including inflammation resulting from a recent viral respiratory infection and, of course, some people get it from motion sickness.

A diet that restricts salt is used in some patients with Meniere's disease to try to prevent any accumulation of fluid in the balance canals. And circulation can be a factor. I am doubtful that you will get much benefit from a low-fat, low-cholesterol diet but it is worth trying. I am sending you The Health Letter number 1-3, Diet, Preventing Atherosclerosis. Others who want this information can send 50 cents with a long, stamped, self-addressed envelope for it. Send your letter to me in care of this newspaper, P.O. Box 1551, Radio City Station, New York, NY 10101.

Fatty cholesterol deposits can affect any arteries and impair circulation. Some people do get improvement in hearing and ear function if they are able to reverse these circulation problems so you might as well try it.

DEAR DR. LAMB - I have had Meniere's disease for 26 years. The hearing in my right ear deteriorated first. After about 15 years my left ear started to go.

DEAR READER - Your case is unusual because it involves both ears and began at such an early age. Meniere's disease more often begins in middle life.

DEAR DR. LAMB - I have had Meniere's disease for 26 years. The hearing in my right ear deteriorated first. After about 15 years my left ear started to go.

DEAR READER - Your case is unusual because it involves both ears and began at such an early age. Meniere's disease more often begins in middle life.

DEAR DR. LAMB - I have had Meniere's disease for 26 years. The hearing in my right ear deteriorated first. After about 15 years my left ear started to go.

DOONESBURY

By Garry Trudeau

"AND WHEN I HEARD ABOUT LUCY GETTING 20% COLLEGE BELIEVES IT! WE'VE WAITED SO LONG!"

"YOU BOTH TRUST THE RESULTS OF THE POLL THEN?"

"OF COURSE WE TRUST THE POLL! IF YOU CAN'T TRUST GEORGE GALLUP? CHAMP TO BE WINNING YOU GUYS TRUST?"

"THEY WERE GIBBERING MATES! EVEN THEN HE WAS NOSEY."

HOROSCOPE

By BERNICE BEDE OBL

For Friday, October 15, 1976

ARIES (March 21-April 19) An old issue that caused friction in the family may surface today. Try to treat it more tactfully this time.

TAURUS (April 20-May 20) Your chances of getting others to do things for you today will be very slim if your approach is too demanding. Say "please" and "thank you."

GEMINI (May 21-June 20) Be more on guard than usual with possessions today. Don't leave valuables in your car without locking it.

CANCER (June 21-July 21) You're bent upon doing things your way today. This could result in problems. Conditions inhibiting your independence should be handled tolerantly.

LEO (July 22-Aug. 22) Think your moves through carefully today or you'll be yourself into a corner. Above all, don't do anything out of spite.

VIRGO (Aug. 23-Sept. 22) Think twice today before committing yourself to anything that could tie up future resources or earnings. You could bite off more than you can chew!

LIBRA (Sept. 23-Oct. 23) Goals you set will be thwarted if you fail to use logical pro-

WIN AT BRIDGE

worked he would draw trumps, discard one club on a high diamond and repeat the club finesse.

The second line was to cash the ace of diamonds, ruff a diamond, enter dummy with the seven of trumps and assuming trumps broke 2-2, hope to be able to run the diamonds.

South decided on a third line of play that didn't offer quite as good a chance mathematically, but gave him an opportunity for lots of thought at the end of the play.

Neither of the first two lines would work. His line did. He simply ran off all his trumps while discarding down to four diamonds and a club in dummy. Then he went after diamonds and since the queen was kind enough to drop he was home with the slam.

ASK THE JACOBS

An Illinois reader wants to know if Ely Culbertson was an American citizen by birth. He was actually born in Ploesti, Rumania, but was registered with the U.S. Consul as an American citizen, so the answer to the question is "Yes."

(For a copy of JACOBY MODERN, send \$1 to "Win at Bridge," c/o this newspaper, P.O. Box 489, Radio City Station, New York, N.Y. 10101)

Make Room For Daddy

By GILL FOX

When Charles Harp came back to his Longwood home the other day, his 21-month-old son, David, didn't recognize him. He was afraid of him. And he cried.

Something new had been added since he last had seen his daddy: a beard. David was surprised. As was his 5-year-old sister, Christy, and their mother, Deedee. But one swing in his arms and, according to Deedee, David "knew it was daddy" - beard and all.

The change was easy to explain. Daddy had been away - far away - in Minnesota. He was there helping people.

Charles Harp is a Seminole County Forest Ranger. He got a call several days ago from officials in Minnesota asking for help. The firefighters there needed volunteers to end the blight of an out-of-control blaze that had threatened 23,000 acres from Sept. 12-25.

"Before it was under control," recalls Harp, "it burned a dozen homes and farms, including all farming equipment and silos. Many animals died from the super-heated air."

Harp spent two weeks in Minnesota. They were two weeks that had been planned for something else: a vacation with his family to the nation's capital.

But his responsibility and compassion came first - he took off for the fiery forests of Minnesota.

A fire-fighting workday lasted 14 to 15 hours, reports Harp. Complete exhaustion, is how he puts it. "There were about 15,000

Evening Herald

69th Year, No. 48 - Friday, October 15, 1976 Sanford, Florida 32711 - Price 10 Cents

Herring: Can't Talk Of Probe

By BOB LLOYD
Herald Staff Writer

Seminole-Brevard State Atty. Abbott Herring today refused to confirm or deny reports that he has recommended that Gov. Reubin Askew suspend a Casseberry city official that Herring says "was compromised" before a prostitution ring was smashed.

"I've made recommendations to the governor," Herring said today, "but I won't say what they are."

Herring said the recommendations accompanied an inch-thick investigative report compiled by his office. The report is believed to include sworn testimony by admitted prostitutes, results of polygraph examinations and other documents.

The report to Askew reveals three prostitution rings that had been operating in south Seminole County.

A spokesman at the governor's office in Tallahassee said this morning that Askew hasn't yet received the report Herring sent by registered mail.

Also this morning police were continuing their three-week search for Donald Schreiner, a former employer of Club Juana, a Casseberry nightspot featuring nude dancers. Herring told reporters Wednesday that a misdemeanor prostitution warrant is out for Schreiner, who also is a former Longwood city councilman and a former Seminole sheriff's deputy and narcotics investigator.

When asked why he had revealed the name of the unarrested suspect, Herring said, "Because we want to find him and need public help in doing it." He said state law permits him to publicize the name of a suspect wanted for arrest.

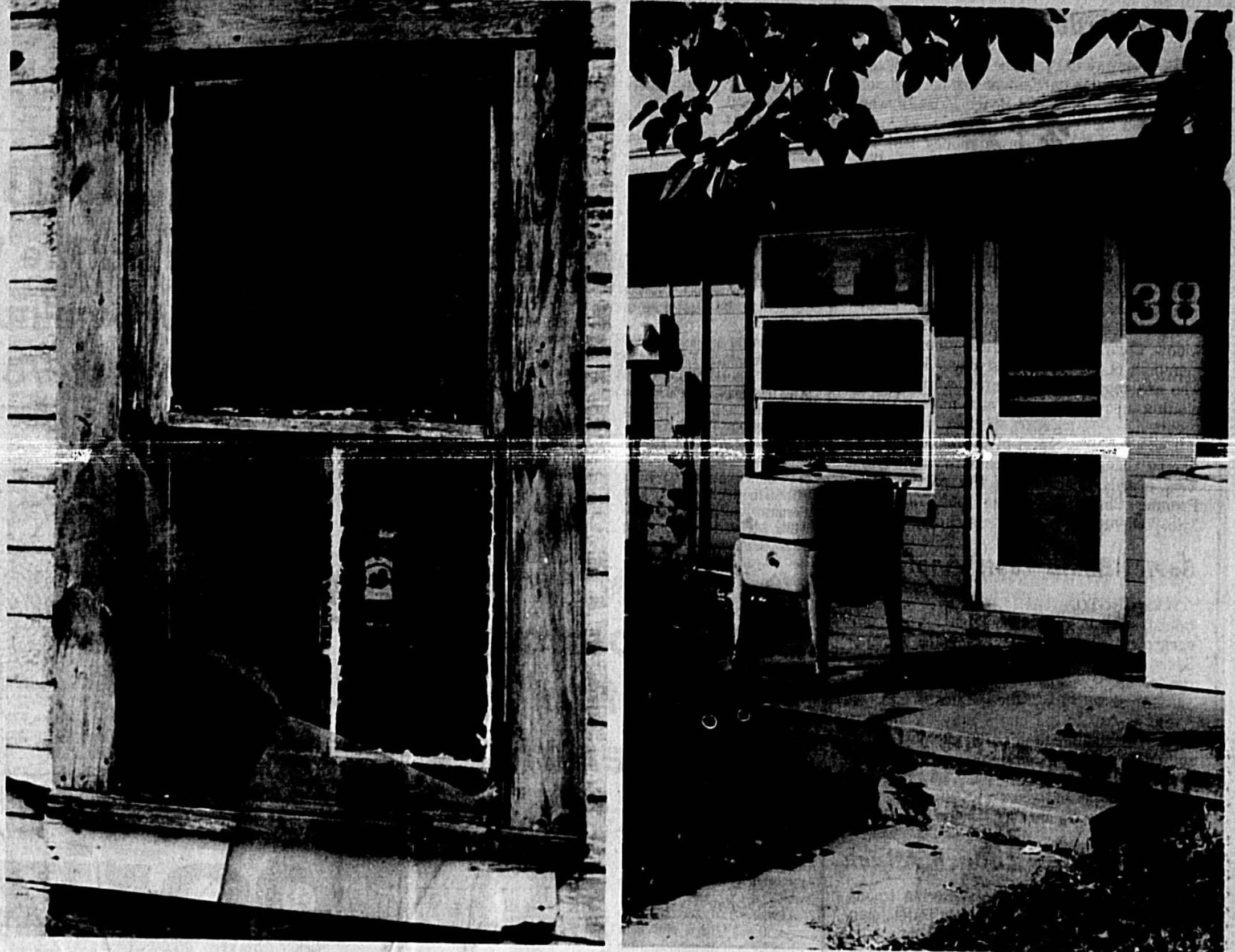
Herring on Wednesday said one of the three prostitution rings is still under investigation. He said the other two were apparently separate operations, one "involving Club Juana" and the other operating from a private rental residence in the exclusive community "The Springs" west of Longwood off SR-44 near I-4.

Herring named Schreiner as the head of the prostitution ring that he says testimony links to the nightclubs.

Herring said a "master plan" revealed by prostitutes given immunity from prosecution alleges a "contact man," who Herring refused to name, "would get in touch with the head of the ring."

"It has to do with a call-girl operation which appears to be a service that would be available to high-ranking public officials."

See CALL-GIRL, Page 5A



BAY AVE. KITCHEN WINDOW: THE WAY IT WAS

A FAMILY WITH A HOME

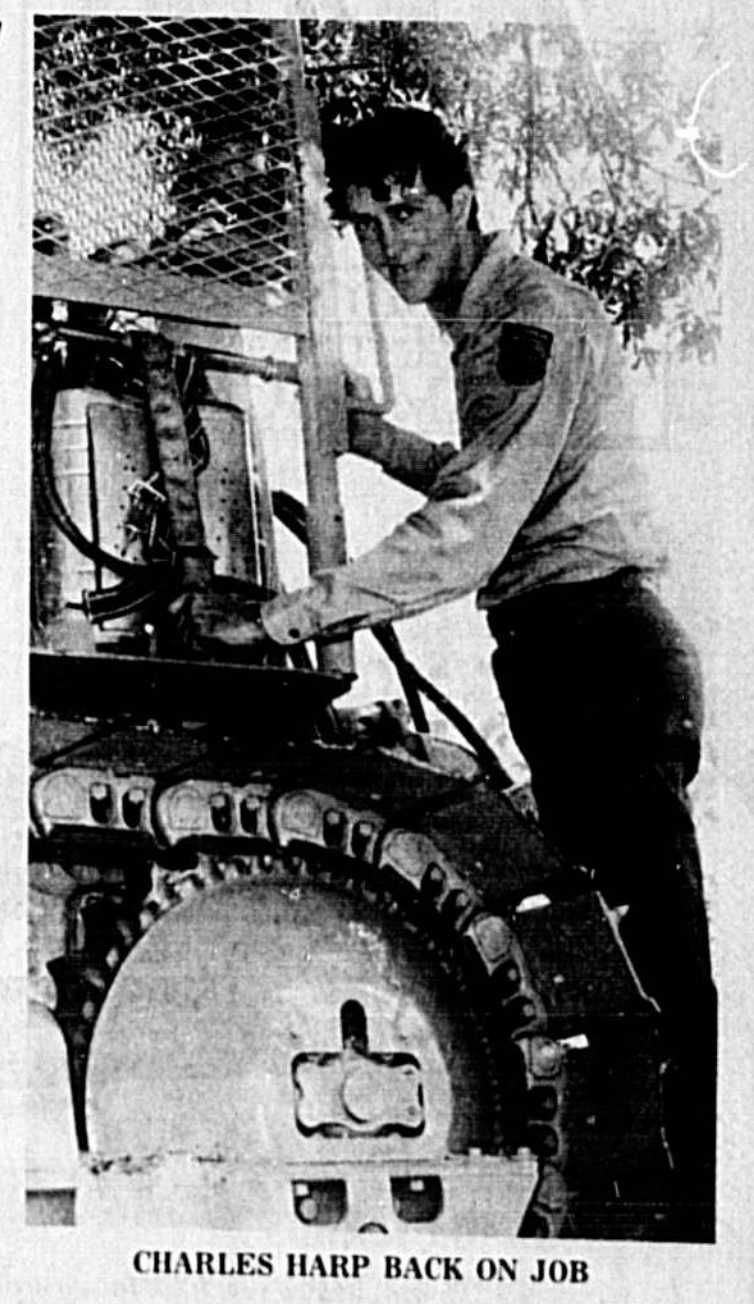
The pronoun 'his' contained in the second paragraph in early copies of the Evening Herald's Thursday story on the call-girl rings was a typographical error. The correct word, inserted in later editions, was "these."

BACK DOOR, EDWARD HIGGINS TERRACE: THE WAY IT IS

Sanford's housing crisis doesn't seem quite so severe to one family today. Mildred DeFreese hopes to have her family settled in a federally-subsidized apartment at Edward Higgins Terrace. A week ago their home at 809 Bay Avenue was posted by the county health department as a health hazard, and the DeFreeses - the family without a home the past several days - had to leave. It took a struggle, Mrs. DeFreese says, but now she has a decent home to raise her son. Details, page 3A.

'Ode To Charlie'

Here is a hearty thanks To the Florida crew, They say that Minnesota Has done wonders for you. We've enjoyed feeding you You're a pretty swell bunch You never grumble, no matter What's left for lunch! We hear you are leaving That you're Florida bound; Have a safe journey home When you leave this burned-over ground. Our summer has slowly Turned into Fall So good-bye and good luck And God bless you all!



CHARLES HARP BACK ON JOB

LAKE HOWELL'S VARSITY Today

The Lake Howell High School football team will travel to Apopka tonight for a game, (from left, front row) - Matt Simonelli, Randy Pruitt, Don Andriano (no longer with team), Bob Luby, Frank Fabrizio, Mark Schrenk, Bert Barclay, Les Schmitt, Don Schrenk, Duane Warrano, Bob Milano, Mike Perry, Richard Arnold, John Brandoff, Pat Eby, Ray Hykoski, Paul Hines and Joffray Narcantel; (Third row) - Jim Pritchard (no longer with team), Larry Connariato, Mike Fletcher, Steve Perry, Bob Solomon, Mike Couillard, Richard Cordeiro, Duane Veltman, Mike Lacore, Doug Greider, Greg Abbott and Chuck Woodworth.

Around The Clock	4-A
Bridge	4-B
Calendar	5-A
Church	2-3-B
Comics	6-B
Crossword	4-B
Editorial	4-A
Dear Abby	1-B
Dr. Lamb	6-B
Horoscope	6-B
Hospital	5-A
Obituaries	5-A
Sports	6-B
Television	4-B
Weather	5-A
Women	1-B

WORLD IN BRIEF

Nobel Peace Prize Not Awarded This Year

OSLO, Norway (AP) — The Nobel committee of the Norwegian parliament has decided not to award the 1976 Nobel Peace Prize, it was announced today.

Mao's Widow Denounced

TOKYO (AP) — Wall posters appeared in Shanghai today denouncing Mao Tse-tung's widow, Chiang Ching, and three other radical members of the Communist party Politburo who are reported under arrest with her for plotting a coup, Japan's Kyodo news service reported.

Soviet Bomb Tests Analyzed

WASHINGTON (AP) — The Ford administration has concluded that all four underground nuclear tests conducted by the Soviet Union since July were in the general range of strength permitted under an agreement with the United States.

Syrian Troops Launch Attack

BEIRUT, Lebanon (AP) — Syrian troops and tanks today attacked the last Palestinian stronghold blocking their advance down the Beirut-Damascus highway to the Lebanese capital.

Exile Held In Airliner Crash

CARACAS, Venezuela (AP) — Orlando Bosch, a militant Cuban exile, and several other persons have been arrested for questioning about the crash off Barbados of a Cubana Airlines jet in which 73 persons died, officials say.



AD MEDIA

- TV
- RADIO
- NEWSPAPERS
- MAGAZINES
- OUTDOOR
- YELLOW PAGES

Yellow Pages

There's where you look for customers. J.B. but here's where they look for you!

3 out of 4 adults look to the Yellow Pages for help.

They'll do it more than forty times, and almost 90% of the time they'll follow up with a visit, a phone call, or a letter. Your Yellow Pages Sales Rep knows how to make sure you're seen by all the right people by designing a successful advertising program for you.

He'll have them looking your way.

GET YOUR SHARE OF THE ACTION

USE IT!

HELP! STOP CRIME!

Victim's Choice

Atlanta General's Office Tallahassee, Florida

Both Seeking County Franchise Ambulance Firms Fail Guidelines

By ED PRICKETT Herald Staff Writer

Neither ambulance firm vying for an exclusive franchise in Seminole County meets guidelines outlined in a county ordinance, according to Gary Kaiser, the public safety director.

Kaiser said today he has written both Herndon Ambulance Services and the present franchise holder — and Aids Ambulance Services — informing them specifications set out in the ordinance have not been met.

Kaiser said he has informed the 18-member Emergency Medical Services (EMS) panel of his findings, and the next step unless guidelines are met is to inform county commission.

Dole-Mondale: Will Football Win Over Debate?

HOUSTON (AP) — Two men who have argued many times in the U.S. Senate are staging an argument in a Texas theater tonight in a one-night campaign performance for national television.

Discovered 1776 Bicentennial America 1976

After one candidate answers the question posed by a member of the panel of reporters the other candidate will be allowed to comment on that response. Then the first candidate can respond to the opponent's response.

Dole warmed up for the debate with a Republican rally on Thursday, where he was joined by former Gov. Ronald Reagan of California and John Connally of Texas.

Kaiser said firms still have not supplied Seminole County with proof of insurance coverages, performance bonds, liability bonds and financial statements — both future and past.

In addition, Kaiser has written hospitals and law enforcement personnel asking for comments on the quality of service provided by Herndon.

"I can run a service for the people," declared Pido, Willis responds by saying, "We've been here for five years; we've cut every corner we can, but he (Pido) says he can do it for nothing — that's impossible."

"We definitely find there is no need for a subsidy," answered Pido. "I can have five ambulances right off the bat; we're ready to go."

Though Pido claims he can operate with a "zero subsidy," he said he doesn't want the franchise unless it's exclusive.

Herndon's Willis said plans are to remain in Seminole County — with or without the exclusive franchise.

"That's no good; you'd have ambulance chasing," Pido said.

Willis says the present franchise applies itself only to emergency calls — police and

fire, but a check of the county ordinance shows the county commission has the option of outlining the terms of each franchise as it is granted.

Pierce said it's his understanding that the commission can set the terms of the franchise at the time of the award.

Kaiser said he will rely heavily on advice of the EMS council when he makes his recommendation to the county.

Join Us In Celebrating The Wonderful Progress Of Beautiful Seminole And South West Volusia Counties...

horizons

third century america

1976 PROGRESS EDITION

Send PROGRESS 1976 to your family and friends outside Florida and let them see for themselves what Central Florida life is all about.

Help us share our pride in the communities in which you live. Simply fill in the coupons with names & addresses of your relatives & friends. We'll mail them a copy of our fabulous Progress Edition.

ONLY 75¢ Per Copy Postage Prepaid

RESERVE YOUR EXTRA COPIES TODAY! (No orders can be accepted after Oct. 23)

RESERVE YOUR EXTRA COPIES TODAY!

PROGRESS MAIL-A-WAY ORDER

Name _____ Mailing Address _____ City _____ State _____ Zip _____

Additional list enclosed

Name _____ Mailing Address _____ City _____ State _____ Zip _____

Additional list enclosed

Name _____ Mailing Address _____ City _____ State _____ Zip _____

Additional list enclosed

Name _____ Mailing Address _____ City _____ State _____ Zip _____

Additional list enclosed

NO TELEPHONE ORDERS, PLEASE

Evening Herald

POST OFFICE BOX 1657, SANFORD, FLORIDA 32771

FLORIDA IN BRIEF

Florida Officials Get 'Shot' To Ease Flu Vaccine Quilms

By The Associated Press In an effort to shore up a sagging public confidence, high-ranking Florida officials have publicly bared their arms to try to show that there's no reason to fear swine-flu vaccinations.

"I had no reservations about taking mine," Florida Gov. Reubin Askew said Thursday after he and Lt. Gov. Jim Williams took their shots at the Leon County Health Department in Tallahassee.

President Ford received his earlier in the day in Washington.

ERA Vote Request Denied

TALLAHASSEE (AP) — Senate President-designate Lew Brantley has rejected Gov. Reubin Askew's request for a Senate vote next month on ratification of the proposed Equal Rights Amendment.

Inmates Work As Movers

TALLAHASSEE (AP) — Prison inmates, working under armed guards and a mandate from lawmakers who want to save money, will end their first state moving job today.

Disney Talks Resume Today

ORLANDO (AP) — Contract talks aimed at averting a strike by 1,400 maintenance, utility and operations employees at Disney World will resume today after a 12-hour session Thursday.

NATION IN BRIEF

Most Swine Flu Programs Resuming After Deaths Scare

By The Associated Press A federal official says most areas that halted swine flu inoculations are resuming them because studies show the deaths of elderly persons were coincidental to their receiving shots.

Blustery Weather Continues

By The Associated Press Blustery weather continued in the upper Midwest early today, as very windy conditions were reported from the northern Plains to the Great Lakes.

Circus Furnishes Fertilizer

CHICAGO (AP) — They came to the circus with wheelbarrows, buckets and plastic bags, eager to shovel up what the performing tigers, llamas and elephants had left.



OUTSTANDING POLICEMAN Sanford Police Chief Ben E. Butler presents "Officer of the Month" award to Sgt. William P. Foster. The September award winner was selected by panel of fellow officers for outstanding efforts in the line of duty.

Altamonte Raid Nets \$5,000 Heroin, Pair

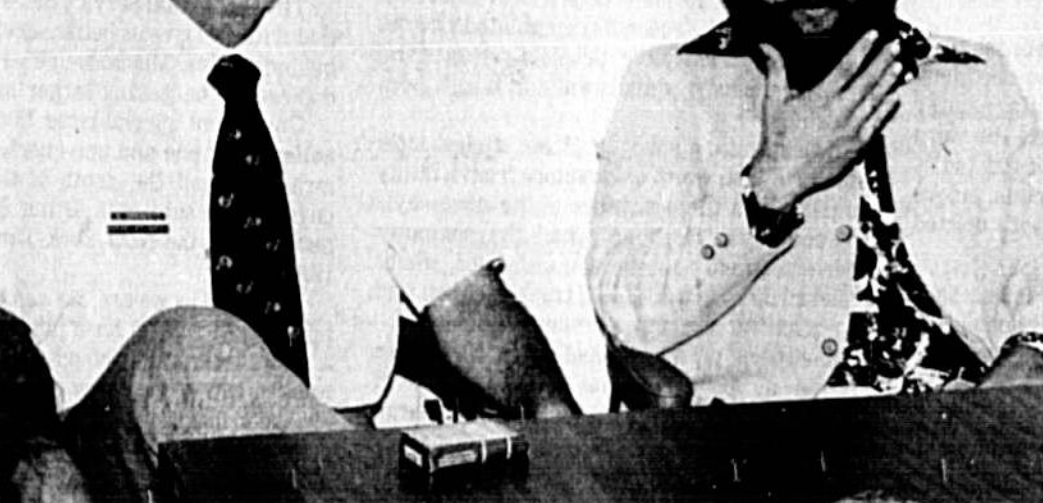
Seminole sheriff's agents raided a residence at Altamonte Springs Thursday night, seizing heroin with an estimated street value of \$5,000 and arresting two men on felony drug possession charges.

Action Reports

* Fires * Courts * Police Beat Investigation in the case is continuing. In a separate case, deputy R. D. Strobbridge jailed Joseph Louis Marchetti, 20, Orlando, in lieu of \$5,000 bond on a charge of felony possession of marijuana.

Burglar Suspect Freed

Circuit Court Judge A. J. Hosemann Jr. Thursday directed a verdict of acquittal for a Fern Park man accused of armed burglary, grand larceny and receiving stolen property.



STEVE SWEAT (LEFT) AND SUPT. RICK HUGHTLETT

Cramped Center Irks New Aide

Steve Sweat, newly appointed assistant to Rick Hughtlett, superintendent of the Seminole County Juvenile Detention Center, vowed Thursday to "increase the effectiveness" of the center's operations.

WESTERN AUTO

YOU CAN OWN A WESTERN AUTO STORE IN:

LAKE MARY, FL. COCOA BEACH, FL. KEY LARGO, FL.

There is an opportunity available in the above towns for a Western Auto Associate Store selling hardware, sporting goods, automotive supplies, furniture, refrigerators, freezers, washers, televisions, C.B.s, radios, other electronics, etc.

We will train you, help install your store and provide counselling after 100% open financing is available to qualified prospects. If you're interested call or write Western Auto Associate Store call toll free number today.

800-521-7700 Ext. 518

Or write: R. J. Renfro, VP, Western Auto, 2107 Grand Ave., Kansas City, Mo. 64108. We will send you a prospectus, phone number and complete address.

WESTERN AUTO

Family Fights For And Wins Home

By JACQUELINE DOWD Herald Staff Writer

The troubled DeFreese family has found a new home. Forced out of their 809 Bay Ave. home by the county health department, the DeFreeses were at first turned down by the Sanford Housing Authority. But today they'll be moving into a federally subsidized apartment at Edward Higgins Terrace.

Mildred DeFreese has had to fight for her family's new home. And Thursday night she had to fight for permission from the housing authority board to pay weekly installments on the board's behalf.

But this morning it looks as though her fight is over. By tonight she hopes to have her family in a new home.

Mrs. DeFreese's request for help from the board was not refused warmly. "If in your corner all the way," Commissioner George Brown told her, "but I don't like you coming in here to impose on us. You should appreciate what we can't run it."

Housing authority staffers who reviewed the DeFreese's application recommended a monthly payment of the standard \$50 security deposit — a total of \$136 before the family could move in. Victor DeFreese expects to receive his \$106 weekly paycheck today.

Thursday night, after a lengthy discussion, the board agreed to let them move in after paying \$42.40 — half a month's rent since today is Oct. 15.

Mrs. DeFreese came to the board for help even though Linda Williams, social services director for the housing authority, said she could apply for special arrangements as a hardship case until she signed a lease.

"The average tenant would consider her rich," Mrs. Williams told the board. She also suggested that the Tenants' Council raise money to get Mrs. DeFreese into public housing by holding a bake sale.

"She's over the income level for regular admission," tenant selector Rosemary Redding told the board. "We had to admit her under special admission because she was displaced from her home."

Mrs. DeFreese says the staff figured her family's income level based on the assumption that her husband Victor, who works for

fruit company, will continue to earn \$106 a week all year. But his job is seasonal, she said, and he will probably lose it in February.

"When the time comes that he is without a job," Commission Chairman Edward Blackshear told her, "you can go back for a re-evaluation. If your income is zero rent, you'll pay zero rent."

The housing authority commissioners did not vote on the final arrangement, which was proposed by attorney Ned Julian Jr. It was agreed upon after the commission meeting was formally adjourned.

Commissioners D.C. McCoy and Samuel Wright left before the discussion of the DeFreese case, which had started during the regular meeting, was resumed. Commissioner John Colbert did not attend Thursday night's meeting.

This morning, Mrs. DeFreese was hit with an unexpected problem: furnishing the new apartment. "The landlady said she was giving me the furniture at our old house," Mrs. DeFreese said. "Then this morning she called and said she was taking it back."

"I don't know where to turn for help this time," she said.

Wanted: Someone For Day Care Center

The Sanford Housing Authority is searching for a way to re-open the day care center which serves children who live in the city's public housing.

Letters have been sent out to area day care center operators who may be interested in presenting a proposal to running the center at Castle Brewster Court. Anyone else who is interested should contact Thomas Wilson III, executive Director of the housing authority.

"I don't know if anybody is really going to be interested," Wilson said. "The day care center has never made a profit."

Wilson said the search for interested operators does not eliminate Francis Coleman Jackson, who managed the day care center for a year before his lease expired in August. "If she is interested in doing it again," he said, "we will certainly consider her proposal."

The housing authority owns very little equipment for the day care center, and most of what is needed would have to be supplied by the operator, Wilson said.

Casselberry Firm Tops School Architect List

A Casselberry architectural firm tops a list of building designers approved by the Seminole County School Board for consideration in the scheduled conversion of the old Sanford Naval Academy Junior School into an administrative office complex.

The Dunwoody-Derryberry-Pavelchak Partnership was designated by board members as the first architect with which they will hold negotiations on the planned project.

Along with the Casselberry concern, the panel has approved five other architects which were recommended for consideration by School Supt. William P. (Bud) Layer.

Charvat - Peacock Architects, Winter Park; Fuleberg Koch Associates, Orlando; Architectural Design Inc. of Gainesville.

The school board recently completed the \$300,000 purchase of the former naval academy building and property located at Mellonville and Celery Aves., Sanford.

Previously owned by the Bernard MacFadden Foundation, the property became available when the school closed in June and the foundation launched federal bankruptcy proceedings.

THE GYPSY TENT Restaurant

You are cordially invited to visit our newly remodeled GYPSY TENT Restaurant for your complete dining enjoyment.

Featuring RICK KEELER at the Jolly Whaler Lounge Mon-Sat 9-2 a.m.

INTRODUCTORY SPECIAL ROAST PRIME RIB OF BEEF 1" cut with its own natural juice. Plus full salad bar & rolls 4.95

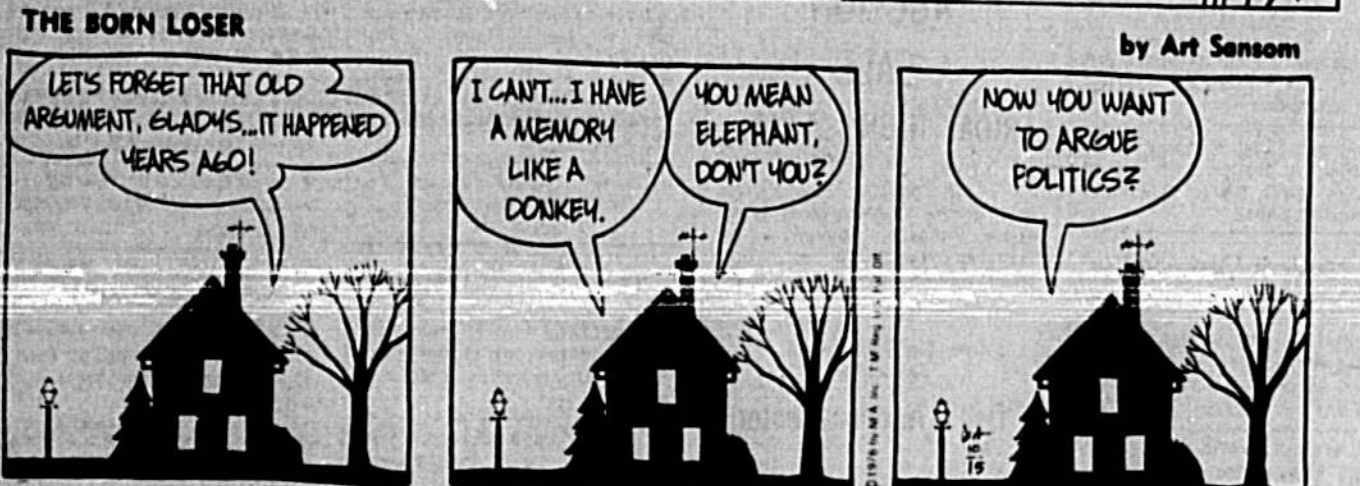
SPECIAL FOR OCTOBER ONLY CHILD'S PORTION \$2.50

Quality Inn / North I-4 & SR 434 LONGWOOD, FL 862-4000

Save Gas. Live. 55 MPH

FLORIDA GOVERNOR'S HIGHWAY SAFETY COMMISSION Florida Department of Administration

ARRIVE ALIVE



All Aboard!

Crossword puzzle grid with clues. 1. Place for locomotive. 2. Railroad tracks. 3. Crossed. 4. Last train of the day. 5. Railroad. 6. Railroad. 7. Railroad. 8. Railroad. 9. Railroad. 10. Railroad. 11. Railroad. 12. Railroad. 13. Railroad. 14. Railroad. 15. Railroad. 16. Railroad. 17. Railroad. 18. Railroad. 19. Railroad. 20. Railroad. 21. Railroad. 22. Railroad. 23. Railroad. 24. Railroad. 25. Railroad. 26. Railroad. 27. Railroad. 28. Railroad. 29. Railroad. 30. Railroad. 31. Railroad. 32. Railroad. 33. Railroad. 34. Railroad. 35. Railroad. 36. Railroad. 37. Railroad. 38. Railroad. 39. Railroad. 40. Railroad. 41. Railroad. 42. Railroad. 43. Railroad. 44. Railroad. 45. Railroad. 46. Railroad. 47. Railroad. 48. Railroad. 49. Railroad. 50. Railroad. 51. Railroad. 52. Railroad. 53. Railroad. 54. Railroad. 55. Railroad. 56. Railroad. 57. Railroad. 58. Railroad. 59. Railroad. 60. Railroad.

How Antabuse Helps Alcoholics. DEAR DR. LAMB - I am an alcoholic and have been taking Antabuse for a year. Whenever someone finds out I am on the drug they want to know how it works. Could you explain this? DEAR READER - Antabuse (disulfiram) is one of those interesting accidents in medicine. Two Danish physicians were using it to see if it could be used in treating other medical problems. They got violently ill at a cocktail party and realized that it could be used to treat alcoholics. Antabuse has very little effect on the body by itself. However, it combines with alcohol to form another chemical called acetaldehyde. It is this substance that makes a person violently ill. As you probably know if you have taken Antabuse it will cause this reaction for six to 12 days after the medicine is taken. The reaction can cause flushing, severe nausea and vomiting and even shock. The reaction can be dangerous and that reason Antabuse should be taken only according to a doctor's recommendations. A person who takes Antabuse early in the morning, who resolves to not drink again is strongest, will then have the reaction later in the day if he drinks. It does not cure alcoholism by its own action, but acts only to cause a person to avoid drinking because of the violent reaction that will occur if he does. I am sending you The Health Letter number 14, Alcohol, Whiskey, Gin, Vodka, Rum, Wine, Beer. Perhaps the information will be useful to you helping other people to avoid alcoholism. Others who want this information can send 50 cents with a long, stamped self-addressed envelope for it. Just send your letter to me in care of this newspaper, P.O. Box 1551, Radio City Station, New York, NY 10101. DEAR DR. LAMB - I hear a lot about protein and that we should eat meat. The cattle eat grass, so to my mind what we get is just secondhand grass. I do not see why fruit, vegetables and cereals should not serve the same purpose. It seems more natural to me.

WIN AT BRIDGE. NORTH: A Q 7 5, 8 4, K 8 6 4, A 8 3. EAST (D): K 10 8, A 7 5 2, A 9, 7 6. SOUTH (D): K 3, A 10, A K Q 10. Both vulnerable. West North East South. Pass Pass Pass Pass. Opening lead - 5.

How Antabuse Helps Alcoholics. DEAR DR. LAMB - I am an alcoholic and have been taking Antabuse for a year. Whenever someone finds out I am on the drug they want to know how it works. Could you explain this? DEAR READER - Antabuse (disulfiram) is one of those interesting accidents in medicine. Two Danish physicians were using it to see if it could be used in treating other medical problems. They got violently ill at a cocktail party and realized that it could be used to treat alcoholics. Antabuse has very little effect on the body by itself. However, it combines with alcohol to form another chemical called acetaldehyde. It is this substance that makes a person violently ill. As you probably know if you have taken Antabuse it will cause this reaction for six to 12 days after the medicine is taken. The reaction can cause flushing, severe nausea and vomiting and even shock. The reaction can be dangerous and that reason Antabuse should be taken only according to a doctor's recommendations. A person who takes Antabuse early in the morning, who resolves to not drink again is strongest, will then have the reaction later in the day if he drinks. It does not cure alcoholism by its own action, but acts only to cause a person to avoid drinking because of the violent reaction that will occur if he does. I am sending you The Health Letter number 14, Alcohol, Whiskey, Gin, Vodka, Rum, Wine, Beer. Perhaps the information will be useful to you helping other people to avoid alcoholism. Others who want this information can send 50 cents with a long, stamped self-addressed envelope for it. Just send your letter to me in care of this newspaper, P.O. Box 1551, Radio City Station, New York, NY 10101. DEAR DR. LAMB - I hear a lot about protein and that we should eat meat. The cattle eat grass, so to my mind what we get is just secondhand grass. I do not see why fruit, vegetables and cereals should not serve the same purpose. It seems more natural to me.

How Antabuse Helps Alcoholics. DEAR DR. LAMB - I am an alcoholic and have been taking Antabuse for a year. Whenever someone finds out I am on the drug they want to know how it works. Could you explain this? DEAR READER - Antabuse (disulfiram) is one of those interesting accidents in medicine. Two Danish physicians were using it to see if it could be used in treating other medical problems. They got violently ill at a cocktail party and realized that it could be used to treat alcoholics. Antabuse has very little effect on the body by itself. However, it combines with alcohol to form another chemical called acetaldehyde. It is this substance that makes a person violently ill. As you probably know if you have taken Antabuse it will cause this reaction for six to 12 days after the medicine is taken. The reaction can cause flushing, severe nausea and vomiting and even shock. The reaction can be dangerous and that reason Antabuse should be taken only according to a doctor's recommendations. A person who takes Antabuse early in the morning, who resolves to not drink again is strongest, will then have the reaction later in the day if he drinks. It does not cure alcoholism by its own action, but acts only to cause a person to avoid drinking because of the violent reaction that will occur if he does. I am sending you The Health Letter number 14, Alcohol, Whiskey, Gin, Vodka, Rum, Wine, Beer. Perhaps the information will be useful to you helping other people to avoid alcoholism. Others who want this information can send 50 cents with a long, stamped self-addressed envelope for it. Just send your letter to me in care of this newspaper, P.O. Box 1551, Radio City Station, New York, NY 10101. DEAR DR. LAMB - I hear a lot about protein and that we should eat meat. The cattle eat grass, so to my mind what we get is just secondhand grass. I do not see why fruit, vegetables and cereals should not serve the same purpose. It seems more natural to me.

How Antabuse Helps Alcoholics. DEAR DR. LAMB - I am an alcoholic and have been taking Antabuse for a year. Whenever someone finds out I am on the drug they want to know how it works. Could you explain this? DEAR READER - Antabuse (disulfiram) is one of those interesting accidents in medicine. Two Danish physicians were using it to see if it could be used in treating other medical problems. They got violently ill at a cocktail party and realized that it could be used to treat alcoholics. Antabuse has very little effect on the body by itself. However, it combines with alcohol to form another chemical called acetaldehyde. It is this substance that makes a person violently ill. As you probably know if you have taken Antabuse it will cause this reaction for six to 12 days after the medicine is taken. The reaction can cause flushing, severe nausea and vomiting and even shock. The reaction can be dangerous and that reason Antabuse should be taken only according to a doctor's recommendations. A person who takes Antabuse early in the morning, who resolves to not drink again is strongest, will then have the reaction later in the day if he drinks. It does not cure alcoholism by its own action, but acts only to cause a person to avoid drinking because of the violent reaction that will occur if he does. I am sending you The Health Letter number 14, Alcohol, Whiskey, Gin, Vodka, Rum, Wine, Beer. Perhaps the information will be useful to you helping other people to avoid alcoholism. Others who want this information can send 50 cents with a long, stamped self-addressed envelope for it. Just send your letter to me in care of this newspaper, P.O. Box 1551, Radio City Station, New York, NY 10101. DEAR DR. LAMB - I hear a lot about protein and that we should eat meat. The cattle eat grass, so to my mind what we get is just secondhand grass. I do not see why fruit, vegetables and cereals should not serve the same purpose. It seems more natural to me.

How Antabuse Helps Alcoholics. DEAR DR. LAMB - I am an alcoholic and have been taking Antabuse for a year. Whenever someone finds out I am on the drug they want to know how it works. Could you explain this? DEAR READER - Antabuse (disulfiram) is one of those interesting accidents in medicine. Two Danish physicians were using it to see if it could be used in treating other medical problems. They got violently ill at a cocktail party and realized that it could be used to treat alcoholics. Antabuse has very little effect on the body by itself. However, it combines with alcohol to form another chemical called acetaldehyde. It is this substance that makes a person violently ill. As you probably know if you have taken Antabuse it will cause this reaction for six to 12 days after the medicine is taken. The reaction can cause flushing, severe nausea and vomiting and even shock. The reaction can be dangerous and that reason Antabuse should be taken only according to a doctor's recommendations. A person who takes Antabuse early in the morning, who resolves to not drink again is strongest, will then have the reaction later in the day if he drinks. It does not cure alcoholism by its own action, but acts only to cause a person to avoid drinking because of the violent reaction that will occur if he does. I am sending you The Health Letter number 14, Alcohol, Whiskey, Gin, Vodka, Rum, Wine, Beer. Perhaps the information will be useful to you helping other people to avoid alcoholism. Others who want this information can send 50 cents with a long, stamped self-addressed envelope for it. Just send your letter to me in care of this newspaper, P.O. Box 1551, Radio City Station, New York, NY 10101. DEAR DR. LAMB - I hear a lot about protein and that we should eat meat. The cattle eat grass, so to my mind what we get is just secondhand grass. I do not see why fruit, vegetables and cereals should not serve the same purpose. It seems more natural to me.

How Antabuse Helps Alcoholics. DEAR DR. LAMB - I am an alcoholic and have been taking Antabuse for a year. Whenever someone finds out I am on the drug they want to know how it works. Could you explain this? DEAR READER - Antabuse (disulfiram) is one of those interesting accidents in medicine. Two Danish physicians were using it to see if it could be used in treating other medical problems. They got violently ill at a cocktail party and realized that it could be used to treat alcoholics. Antabuse has very little effect on the body by itself. However, it combines with alcohol to form another chemical called acetaldehyde. It is this substance that makes a person violently ill. As you probably know if you have taken Antabuse it will cause this reaction for six to 12 days after the medicine is taken. The reaction can cause flushing, severe nausea and vomiting and even shock. The reaction can be dangerous and that reason Antabuse should be taken only according to a doctor's recommendations. A person who takes Antabuse early in the morning, who resolves to not drink again is strongest, will then have the reaction later in the day if he drinks. It does not cure alcoholism by its own action, but acts only to cause a person to avoid drinking because of the violent reaction that will occur if he does. I am sending you The Health Letter number 14, Alcohol, Whiskey, Gin, Vodka, Rum, Wine, Beer. Perhaps the information will be useful to you helping other people to avoid alcoholism. Others who want this information can send 50 cents with a long, stamped self-addressed envelope for it. Just send your letter to me in care of this newspaper, P.O. Box 1551, Radio City Station, New York, NY 10101. DEAR DR. LAMB - I hear a lot about protein and that we should eat meat. The cattle eat grass, so to my mind what we get is just secondhand grass. I do not see why fruit, vegetables and cereals should not serve the same purpose. It seems more natural to me.

How Antabuse Helps Alcoholics. DEAR DR. LAMB - I am an alcoholic and have been taking Antabuse for a year. Whenever someone finds out I am on the drug they want to know how it works. Could you explain this? DEAR READER - Antabuse (disulfiram) is one of those interesting accidents in medicine. Two Danish physicians were using it to see if it could be used in treating other medical problems. They got violently ill at a cocktail party and realized that it could be used to treat alcoholics. Antabuse has very little effect on the body by itself. However, it combines with alcohol to form another chemical called acetaldehyde. It is this substance that makes a person violently ill. As you probably know if you have taken Antabuse it will cause this reaction for six to 12 days after the medicine is taken. The reaction can cause flushing, severe nausea and vomiting and even shock. The reaction can be dangerous and that reason Antabuse should be taken only according to a doctor's recommendations. A person who takes Antabuse early in the morning, who resolves to not drink again is strongest, will then have the reaction later in the day if he drinks. It does not cure alcoholism by its own action, but acts only to cause a person to avoid drinking because of the violent reaction that will occur if he does. I am sending you The Health Letter number 14, Alcohol, Whiskey, Gin, Vodka, Rum, Wine, Beer. Perhaps the information will be useful to you helping other people to avoid alcoholism. Others who want this information can send 50 cents with a long, stamped self-addressed envelope for it. Just send your letter to me in care of this newspaper, P.O. Box 1551, Radio City Station, New York, NY 10101. DEAR DR. LAMB - I hear a lot about protein and that we should eat meat. The cattle eat grass, so to my mind what we get is just secondhand grass. I do not see why fruit, vegetables and cereals should not serve the same purpose. It seems more natural to me.

SUNDAY EDITION Evening Herald. 69th Year, No. 4 - Sunday, October 17, 1976. Sanford, Florida 32711 - Price 20 Cents



WIN AT BRIDGE. NORTH: A Q 7 5, 8 4, K 8 6 4, A 8 3. EAST (D): K 10 8, A 7 5 2, A 9, 7 6. SOUTH (D): K 3, A 10, A K Q 10. Both vulnerable. West North East South. Pass Pass Pass Pass. Opening lead - 5.

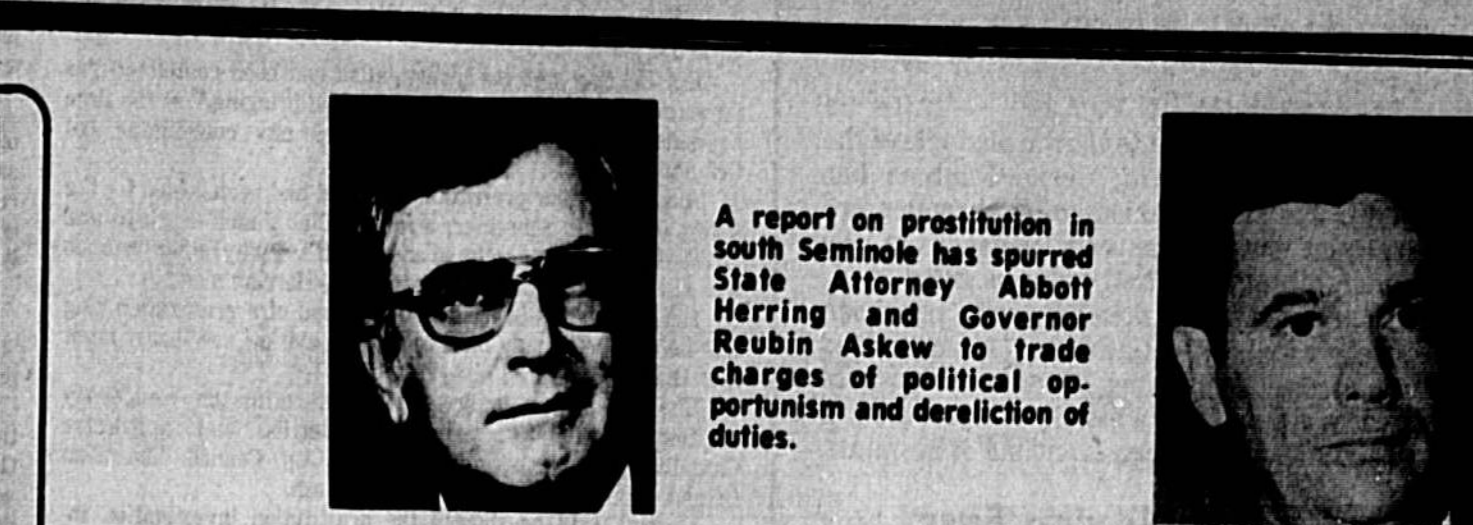
How Antabuse Helps Alcoholics. DEAR DR. LAMB - I am an alcoholic and have been taking Antabuse for a year. Whenever someone finds out I am on the drug they want to know how it works. Could you explain this? DEAR READER - Antabuse (disulfiram) is one of those interesting accidents in medicine. Two Danish physicians were using it to see if it could be used in treating other medical problems. They got violently ill at a cocktail party and realized that it could be used to treat alcoholics. Antabuse has very little effect on the body by itself. However, it combines with alcohol to form another chemical called acetaldehyde. It is this substance that makes a person violently ill. As you probably know if you have taken Antabuse it will cause this reaction for six to 12 days after the medicine is taken. The reaction can cause flushing, severe nausea and vomiting and even shock. The reaction can be dangerous and that reason Antabuse should be taken only according to a doctor's recommendations. A person who takes Antabuse early in the morning, who resolves to not drink again is strongest, will then have the reaction later in the day if he drinks. It does not cure alcoholism by its own action, but acts only to cause a person to avoid drinking because of the violent reaction that will occur if he does. I am sending you The Health Letter number 14, Alcohol, Whiskey, Gin, Vodka, Rum, Wine, Beer. Perhaps the information will be useful to you helping other people to avoid alcoholism. Others who want this information can send 50 cents with a long, stamped self-addressed envelope for it. Just send your letter to me in care of this newspaper, P.O. Box 1551, Radio City Station, New York, NY 10101. DEAR DR. LAMB - I hear a lot about protein and that we should eat meat. The cattle eat grass, so to my mind what we get is just secondhand grass. I do not see why fruit, vegetables and cereals should not serve the same purpose. It seems more natural to me.

How Antabuse Helps Alcoholics. DEAR DR. LAMB - I am an alcoholic and have been taking Antabuse for a year. Whenever someone finds out I am on the drug they want to know how it works. Could you explain this? DEAR READER - Antabuse (disulfiram) is one of those interesting accidents in medicine. Two Danish physicians were using it to see if it could be used in treating other medical problems. They got violently ill at a cocktail party and realized that it could be used to treat alcoholics. Antabuse has very little effect on the body by itself. However, it combines with alcohol to form another chemical called acetaldehyde. It is this substance that makes a person violently ill. As you probably know if you have taken Antabuse it will cause this reaction for six to 12 days after the medicine is taken. The reaction can cause flushing, severe nausea and vomiting and even shock. The reaction can be dangerous and that reason Antabuse should be taken only according to a doctor's recommendations. A person who takes Antabuse early in the morning, who resolves to not drink again is strongest, will then have the reaction later in the day if he drinks. It does not cure alcoholism by its own action, but acts only to cause a person to avoid drinking because of the violent reaction that will occur if he does. I am sending you The Health Letter number 14, Alcohol, Whiskey, Gin, Vodka, Rum, Wine, Beer. Perhaps the information will be useful to you helping other people to avoid alcoholism. Others who want this information can send 50 cents with a long, stamped self-addressed envelope for it. Just send your letter to me in care of this newspaper, P.O. Box 1551, Radio City Station, New York, NY 10101. DEAR DR. LAMB - I hear a lot about protein and that we should eat meat. The cattle eat grass, so to my mind what we get is just secondhand grass. I do not see why fruit, vegetables and cereals should not serve the same purpose. It seems more natural to me.

How Antabuse Helps Alcoholics. DEAR DR. LAMB - I am an alcoholic and have been taking Antabuse for a year. Whenever someone finds out I am on the drug they want to know how it works. Could you explain this? DEAR READER - Antabuse (disulfiram) is one of those interesting accidents in medicine. Two Danish physicians were using it to see if it could be used in treating other medical problems. They got violently ill at a cocktail party and realized that it could be used to treat alcoholics. Antabuse has very little effect on the body by itself. However, it combines with alcohol to form another chemical called acetaldehyde. It is this substance that makes a person violently ill. As you probably know if you have taken Antabuse it will cause this reaction for six to 12 days after the medicine is taken. The reaction can cause flushing, severe nausea and vomiting and even shock. The reaction can be dangerous and that reason Antabuse should be taken only according to a doctor's recommendations. A person who takes Antabuse early in the morning, who resolves to not drink again is strongest, will then have the reaction later in the day if he drinks. It does not cure alcoholism by its own action, but acts only to cause a person to avoid drinking because of the violent reaction that will occur if he does. I am sending you The Health Letter number 14, Alcohol, Whiskey, Gin, Vodka, Rum, Wine, Beer. Perhaps the information will be useful to you helping other people to avoid alcoholism. Others who want this information can send 50 cents with a long, stamped self-addressed envelope for it. Just send your letter to me in care of this newspaper, P.O. Box 1551, Radio City Station, New York, NY 10101. DEAR DR. LAMB - I hear a lot about protein and that we should eat meat. The cattle eat grass, so to my mind what we get is just secondhand grass. I do not see why fruit, vegetables and cereals should not serve the same purpose. It seems more natural to me.

How Antabuse Helps Alcoholics. DEAR DR. LAMB - I am an alcoholic and have been taking Antabuse for a year. Whenever someone finds out I am on the drug they want to know how it works. Could you explain this? DEAR READER - Antabuse (disulfiram) is one of those interesting accidents in medicine. Two Danish physicians were using it to see if it could be used in treating other medical problems. They got violently ill at a cocktail party and realized that it could be used to treat alcoholics. Antabuse has very little effect on the body by itself. However, it combines with alcohol to form another chemical called acetaldehyde. It is this substance that makes a person violently ill. As you probably know if you have taken Antabuse it will cause this reaction for six to 12 days after the medicine is taken. The reaction can cause flushing, severe nausea and vomiting and even shock. The reaction can be dangerous and that reason Antabuse should be taken only according to a doctor's recommendations. A person who takes Antabuse early in the morning, who resolves to not drink again is strongest, will then have the reaction later in the day if he drinks. It does not cure alcoholism by its own action, but acts only to cause a person to avoid drinking because of the violent reaction that will occur if he does. I am sending you The Health Letter number 14, Alcohol, Whiskey, Gin, Vodka, Rum, Wine, Beer. Perhaps the information will be useful to you helping other people to avoid alcoholism. Others who want this information can send 50 cents with a long, stamped self-addressed envelope for it. Just send your letter to me in care of this newspaper, P.O. Box 1551, Radio City Station, New York, NY 10101. DEAR DR. LAMB - I hear a lot about protein and that we should eat meat. The cattle eat grass, so to my mind what we get is just secondhand grass. I do not see why fruit, vegetables and cereals should not serve the same purpose. It seems more natural to me.

How Antabuse Helps Alcoholics. DEAR DR. LAMB - I am an alcoholic and have been taking Antabuse for a year. Whenever someone finds out I am on the drug they want to know how it works. Could you explain this? DEAR READER - Antabuse (disulfiram) is one of those interesting accidents in medicine. Two Danish physicians were using it to see if it could be used in treating other medical problems. They got violently ill at a cocktail party and realized that it could be used to treat alcoholics. Antabuse has very little effect on the body by itself. However, it combines with alcohol to form another chemical called acetaldehyde. It is this substance that makes a person violently ill. As you probably know if you have taken Antabuse it will cause this reaction for six to 12 days after the medicine is taken. The reaction can cause flushing, severe nausea and vomiting and even shock. The reaction can be dangerous and that reason Antabuse should be taken only according to a doctor's recommendations. A person who takes Antabuse early in the morning, who resolves to not drink again is strongest, will then have the reaction later in the day if he drinks. It does not cure alcoholism by its own action, but acts only to cause a person to avoid drinking because of the violent reaction that will occur if he does. I am sending you The Health Letter number 14, Alcohol, Whiskey, Gin, Vodka, Rum, Wine, Beer. Perhaps the information will be useful to you helping other people to avoid alcoholism. Others who want this information can send 50 cents with a long, stamped self-addressed envelope for it. Just send your letter to me in care of this newspaper, P.O. Box 1551, Radio City Station, New York, NY 10101. DEAR DR. LAMB - I hear a lot about protein and that we should eat meat. The cattle eat grass, so to my mind what we get is just secondhand grass. I do not see why fruit, vegetables and cereals should not serve the same purpose. It seems more natural to me.



Herring Snaps Back At Askew's Criticism

By BOB LLOYD and ED PRICKETT Herald Staff Writers. Seminole-Brevard State Atty. About Herring said Saturday that Gov. Reubin Askew is derelict in his duties if Askew doesn't give a report on south Seminole prostitution "the appropriate amount of time and review." Herring says he thinks Askew "would have been livid with rage" had he read the entire report "including four sworn statements and investigative reports by both the city of Casselberry and the state attorney's office." Askew appeared angry at what he called "apparent leaks" by Herring about what the investigation entailed. "I am completely unimpressed with the way Mr. Herring has handled the investigation," Askew said. Herring denied that he'd "leaked" information on the report. He said he had shown the information to a Casselberry city councilman because he (Herring) thought there was a need for information in a decision-making process. Askew said it "appears at first blush" that Herring disclosed parts of the investigation to aid in his campaign for another term as state attorney. Askew is a Democrat and Herring is a Republican. "It appears to me," the governor said, that "the (Herring) is See TEMPER, page 2A

Today

Table of contents for 'Today' section, including: Clergy Wives, INDEX, Around The Clock, Bridge, Calendar, CB News, Comics, Crossword, Editorial, Dear Abby, Dr. Lamb, Horoscope, J Sports, Obstetrics, Opinion, Puzzles, Television, Weather, Women.



FIRE DESTROYS GENEVA HOME. Units from four Seminole County fire departments battled a blaze that destroyed a Geneva home Friday. Mr. and Mrs. Vince Swearingen, owners of the home on Lake Harney Drive, said the \$90,000 structure was a total loss. During the blaze, fireman Michael Weise was overcome by smoke and was transported to Seminole Memorial Hospital. No other injuries were reported. Seminole County fire investigators are probing the incident, which occurred shortly after noon.

VP Debate: A Verbal Street Fight. HOUSTON (AP) - "Tonight may be sort of a fun evening," said Bob Dole. Some fun. If it had not been called a rumble. Slash. Bite. Kick. With words of course. "I think Sen. Dole has richly earned his reputation as a hater of the vice president and all federal officials and after the bloodletting, these two Senate buddies with worlds-apart philosophies shook hands. Of the three election '76 debates so far, the clash of the would-be vice presidents Friday night clearly was the liveliest. And it was Dole's sharp tongue that made it so. "I've known my counterpart for some time," he said. "We've been friends and will be friends when this debate is over and we'll be friends when this election is over - he'll still be in the Senate." The audience in the Alley Theater, cautioned not to laugh inappropriately, laughed. Carter. I've tried to find out," said Dole, the Republican senator from Kansas. "I know he's very ambitious. I know he wants to be President." But, he said he did know about Mondale. "My opponent has a record of voting for every spending program except for defense," he said. Mondale responded that Republicans have had eight years to solve the problems of the economy but "all of that has gotten worse." That's about as friendly as it got. Dole said he jokes that he is running for vice president because "it's a door work and no heavy lifting." Mondale responded that a very strong role is required of the vice president and all federal officials and he talked of the need to reorganize government.