

ALL EXPRESS EMPLOYEES GET RAISE

Chicago, Aug. 12.—Thirty million dollars was added today to the nation's express bill. The railway labor board awarded the 80,000 employees of the American Railway Express company an increase of 16 cents an hour. The decision is retroactive to May 1, 1920. Under the terms of the Esch-Cummings transportation act the express company will be allowed to meet the increased labor cost. Arguments in the rate case already have been presented before the Interstate Commerce Commission at Washington.

Today's award does not go into the question of rules and working conditions, as was the case last month, when the board granted a \$600,000,000 increase to railway workers. It was announced that a decision covering new working rules would be handed down later.

The express decision applies to all express employees save 2,500 who were given an increase of 13 cents an hour in the railway last month. The award to expressmen is slightly better than the average increase to railroad men, the board finding that express employees as a class, were not so well paid as men in other lines of railroad work.

The increases in wages of employees of the American Railway Express Co amount to \$15,000,000 a year. The increase, amounting to 16 cents an hour, will give messengers and other train service employees an increase of \$8.16 a month. All other employees will receive an increase of \$2.44. Train service employees work on a 24 hour a month basis while all other employees work on a 204 hour basis.

PUNCTURES A CLAIM.

In another column will be found an interview given out by M. M. Smith, chairman of the state road department, with reference to the federal aid to be extended those states that will make special appropriations for the construction of roads.

Supporters of the proposed amendment to the constitution authorizing the legislature to bond the state for the purpose of constructing a state system of roads are usually loud in their claims that the federal government will "match dollar for dollar," the money raised by bonds, if this amendment is passed. They ask us if we do not want to procure a system of roads of which we will have to pay only one-half of the cost.

Mr. Smith pictures that claim very effectively. He states that the federal aid will not be extended beyond the last day of next June, unless congress shall pass another bill now before it. He states, also, that the state two-ninth tax was only intended to provide for road construction during the years 1919 and 1920, and that further action by the legislature will be necessary if that tax is to be continued.

HE WANTED GOLF LINKS.

Robert Ingersoll, head of the famous Ingersoll Watch Co., was for many years a winter resident of this county. Mr. Ingersoll came to Florida to enjoy the climate, and he, like all other tourists, wanted to take full advantage of the opportunity. He wanted golf. We didn't have golf and he went where he could get it. Down in Lake county there are a number of golf courses. Mr. Ingersoll went there, and today's dispatches state that he purchased 15,000 acres of land, which he will develop to high intensity. A country club here might have kept this valuable winter resident for Putnam county.—Palatka News.

Mr. and Mrs. Telford moved into their home at the corner of Park avenue and Fifth street this week, having recently purchased this house from the A. P. Connelly Real Estate Co.

SOME TIPS FOR THE THRIFTY HOUSEWIFE.

Man, as a rule, gladly gives over to woman the "running of the house." He thus saves himself that big worry. And he knows that the average housewife can beat him cards and spades when it comes to the day in and day out current financing of the home. The thrifty thrive, they say. And it is true. The pennies saved on shopping for sugar make the dollar available for something else.

It is a woman who asks American housewives these questions, in an endeavor to further assist them in "making every penny count," and to aid them in doing their housekeeping work. She asks:

- Do you make a budget of your income, and stick to the budget?
Pay your bills by bank checks?
Save something every week?
Read carefully the advertisements of special sales in your daily papers, and anticipate your real needs?
Pay cash and carry?
Have an extra cent's worth of gasoline to save five cents?
Check over every bill carefully?
Watch the market on your household staples and buy accordingly?
Know by who measure cotton in linen and wool?
Have you a table in your house of the legal weights and measures in your state?
This questioning woman has figured out a reason for doing or not doing each of these things she proposed. She is keenly alive to the savings and economies that will result by "taking her tips." Obviously, she is to spend high price gasoline in quantity to save a few cents by outgassing a distant store. But it is something thoughtlessly done, isn't it? The store that pays to advertise special sales is bound to present bargains elsewhere there would be no return on the advertisements. The only question is if it advertises your needs. The housewife that handles the home bookshop will keep money in her purse if she notes these things carefully.—Tampa Times.

MIAMI TALKING CITY MANAGER.

Miami is discussing the proposition of a city manager, and it is quite probable that shortly steps will be taken to submit the question to a referendum vote of the people.

Speaking at a recent meeting of the city council, Mayor W. P. Smith said that he believed at least \$100,000 annually could be saved by a business manager, calling attention to an item alone in which eighty-three gallons of gasoline was used last month by a city employee whom he did not believe had any need of a car and suspected of using the gasoline on "joy rides."

The city manager form of government has been discussed by Fort Pierce people from time to time, but no definite action has ever been taken. By many it is believed that concentration of all the responsibilities of city administration under one head would result in much more efficient results, as contrasted with the present uncoordinated form in which the naturally the game of "passing the buck" is more or less prevalent. Cities which have tried the city manager form are as a rule high in its praise and could not be induced to go back to the councilmanic arrangement.

ANOTHER BIG SEMINOLE COUNTY GROVE SALE.

Lyman Twins' Grove at Forest City to Be Closed Up Next Week.

Seminole county groves are becoming as popular as Seminole county celery farms and the men who have stuck by the groves through the good and bad years have at last realized the fruits of their labors. Among the men who have worked early and late and had their ups and downs with the rest of them are the Lyman Twins, of Forest City and Altamonte who came here eight years ago fresh from the road with their big show and settled down to the life of a farmer and fruit grower. They had but they have the right kind of material in their "make-up" and they stayed right on the job, knowing that fortune smiles at some time in the career of an orange man.

Lately Howard has accepted a position with the Armour Fertilizer Co. and Herbert with the Virginia-Carolina Co., as salesmen and they made good at once and decided to sell their big grove and farm at Forest City one of the prettiest places in the county. We have not heard the figure, but understand it is close to \$29,000, which will net the twins a nice profit on their investment, and they many friends here and elsewhere will be glad to know the boys showed good sense when they quit the road and took up Florida farming and fruit growing. They have other grove property and will continue to grow oranges and sell fertilizer just as though they were "poor folks."

The Sanford Herald has installed a latest quick change, Model 5 linotype and its readers may prepare for getting a real paper, better than usual in the near future. Editor Holly is not to give them a real daily next thing.—Tampa Tribune. All we lack is paper. Jawn. We are simply waiting on Gilbert Leach of Leesburg for that paper mill and when he gets it started we will have paper to burn.

SANFORD CORN FIELDS ONE OF OUR GREATEST ASSETS



In the early days, when oranges were king in this part of Florida, before the big "freeze," growers did not mind much about corn and hay and other crops, preferring the raising of the golden globes, selling them on the trees and buying hay and corn for their stock. In those days the Sanford section was famous for its fine orange groves. And then in the night came the thief in the shape of the freeze and the growers awoke to find they had nothing. And with the corn and hay and other crops, the Sanford section was famous for its fine orange groves. And then in the night came the thief in the shape of the freeze and the growers awoke to find they had nothing.

County Agent Berry says that the Sanford section is famous again, this time in the corn line, as we have taken the Hastings' Prohibitive and crossed it with the Cuban Flint, and this makes what is now known all over Florida as the Sanford Hybrid, a happy combination of good prolific corn and the hard flint corn that is said to be proof against the weevils and diseases that formerly attacked our soft corn.

Just now this corn is ripening in the many fields around Sanford and the traveler coming through this country for the first time is struck with the similarity of the lands around here with the rich corn lands of other states, and he is greatly surprised to find so much corn and hay being grown here in Florida where he had been led to believe there was nothing but fruits and a few winter vegetables.

And the photo above gives but a poor idea of the vast corn fields in this section of Florida, where nature has done so much for the farmer and the grower and where with a little capital and much work and intensive cultivation a crop of some kind can be raised every month in the year and where the farmer no longer buys his hay and grain by the car load but raises his own, thus being independent of all other sources of supply and making this the greatest growing section of the state.

SERVICE

THE SERVICE PROVIDED BY THE SOUTHERN UTILITIES COMPANY IS A NECESSARY FACTOR IN THE LIVES, INDUSTRY, COMFORTS, HEALTH AND HAPPINESS OF THE PEOPLE. IN AN ESSENTIAL INDUSTRY OF THIS KIND YOU FIND AN UNQUESTIONABLE, PROVEN STABILITY OF UTMOST IMPORTANCE TO YOU AS AN INVESTOR. IN THE FIRST PLACE, THE SERVICE RENDERED ABSOLUTELY REQUIRES THE CREATION AND MAINTENANCE OF LARGE PHYSICAL PROPERTIES STAKED DOWN AND IMBEDDED IN THE SOIL. THESE PROPERTIES ARE A PERMANENT FIXTURE IN THE COMMUNITY, AND CANNOT BE PICKED UP AND MOVED AWAY. THEY MUST GROW AS THE CITY AND TOWN GROWS AND ARE AS PERMANENT AND SAFE AS THE CITY ITSELF. NEW CAPITAL IS REQUIRED TO ENLARGE OUR PLANTS AND FACILITIES TO MEET THIS GROWTH. AN OPPORTUNITY IS GIVEN YOU WITH THOUSANDS OF OTHERS TO PROVIDE THIS CAPITAL AT A FIXED DIVIDEND OF 8 PER CENT, HAVING PRIOR PARTICIPATION IN THE COMPANY'S NET EARNINGS. CAN YOU BEAT IT? THIS OPPORTUNITY IS NO GOOD TO YOU UNLESS YOU TAKE ADVANTAGE OF IT. THIS STOCK CAN BE PURCHASED IN CASH OR INSTALLMENTS. WRITE OR CALL FOR INVESTMENT BROCHURE.

Southern Utilities Co. Sanford, Florida, or General Office, Palatka, Florida

ANY THING RIGHT WILL STAND PUBLICITY.

The chief of police of Cleveland, Ohio, has been sentenced to 30 days in jail or \$100 in fine for refusing to open the records of his office to newspapers.

This may appear surprising at first, but the court acted upon a sound principle—a principle sound not only in law but in public policy and good morals. Records of public officials must be open to public inspection. Whatever effects the public should be a matter of public information. No branch of our government should be secret.

There are abuses of newspaper privileges, of course, but no such public official who locks the records of his office and refuses to permit newspaper men to ascertain the fact as to what he is doing. Newspaper men know that whenever a public official refuses to make public facts in his possession as to the public business his purpose is for one or two reasons: To hide either corruption or inefficiency.

Anything that is all right will stand the test of publicity. Newspaper men know this and citizens generally are beginning to realize it, too. The Cleveland court which fined the police chief for contempt evidently realized it, and acted upon it.—Tampa Tribune.

FREE SPEECH MAYBE.

We note from some of the State papers that the Supreme Court has decided that municipalities cannot stop speaking on the streets if they so wish. The controversy grew out of the fact that a man preaching on the streets of a Florida town was asked to desist and was made to desist, it seems, by the city authorities. Now merely preaching on the streets is all right, providing the man is not preaching sedition. We would never listen to the forerunners from the streets any man who wanted to talk about something good but, on the other hand, if a man wished to stir up strife, if he had Bolshevick tendencies, if he was attempting to tear down the structures of homes and families and government, we should certainly say that the city authorities had the right to stop him, and if they could not—well, he would be stopped. We have had a few isolated cases of such stuff in this city, but the offending ones were warned not to start anything, and we fully believe that, despite the decision of the Supreme Court, our own city officials are the judges of whether certain people have the right to speak or not, and certainly our city authorities are always asked for permission before anyone speaks on the streets, no matter whether it is preaching, political speaking or any sort of forum talk. We believe the cities are competent to run their own business in this respect and the bars should not be let down to allow every itinerant with foolish ideas to speak when and where he chooses in open defiance of all local and state and national laws.

Free speech we should always have, providing free speech does not conflict with law and order, and the same applies to a free press, and as everyone knows, the present laws of Florida on libel curtail a free press to a large extent in the newspapers and whether we like it or not, we are forced to abide by it.

FIVE WIRE SERVICES BRING WORLD NEWS TO THE METROPOLIS

Jacksonville Paper Increases Facilities for Getting News—Opens Bureau at Tallahassee.

The Florida Metropolis has added three telegraphic news services to their present facilities for gathering the news and is making great strides towards their goal "the best paper in the South." The Jacksonville paper now has five news gathering services at its command. They are, The Associated Press, United Press, International News, Universal News and Newspaper Enterprise Association.

With this lineup The Metropolis is protected on news items in every corner of the world. The paper is under new management and showing great improvements. The editorial page has been cleaned up of advertisements and many good features have been added to this page. The Metropolis also carries a full page sports, a complete page of markets and news reports from every sector of the state.

Recently the management established a news bureau at the state capital. This is in charge of an experienced staff man. The state capital has long been neglected as a news source but The Metropolis now gets the news while it's still news.

Under the reorganization of the Metropolis, Quimby Melton is general manager, Oscar Johnson is managing editor, and Frank P. Hedlow is business manager.

CARD OF THANKS.

Carl C. Bruton, Irene Bruton, Annie Mae Bruton and James Hugh Bruton, Jr., wish to express their thank to their many friends, especially the Old Fellows and Blacksmiths, for their kindness during the sickness and death of their father, J. H. Bruton.

Blanton Luther, who was driving the machine, declared the accident was unavoidable. McClung is survived by a widow and six children.

POTATO MARKET FALLS

The 14-pound sack of Irish potatoes made its appearance today, with advertisements of two local stores of 14 pounds for 59 cents. During the past few weeks the wholesale price of Irish potatoes has tumbled, with the result that housewives have been delighted at being able to get them at "bargain prices"—bargain prices, that is, considering the heights to which potatoes have soared in the not far distant past.

"We do not know how long it will last," one retailer said today. "There have been plenty of fancy Irish potatoes on the local market, and with the jobbers and wholesalers anxious to sell, we simply have bought as cheaply as possible and in that way have been able to give our customers a big saving."

The advertised price of potatoes today is said to be the lowest price at which they have been offered since the United States' entry into the world war, or shortly thereafter, when the cost of living began to soar in earnest. A few weeks ago the first drop in the local price of potatoes was noted, at 10 pounds for 60 cents, which was quickly followed by drops to 63 cents for the same quantity, then 59 cents, then 49 cents, and finally 10 pounds for 45 cents, Saturday and Monday.

The new price advertised today in advertisements, of 14 pounds for 59 cents, is just a fraction over 4 cents a pound.—Tampa Times.

DEATH OF SENATOR CRAWFORD AT ORLANDO

Orlando, August 14. Hon. Geo. W. Crawford died at his residence in Conway, five miles southeast of Orlando, yesterday afternoon. He was one of the pioneers of Orange county, coming here from Tennessee 47 years ago.

He secured land and began raising and fruit raising, and has lived continuously in the neighborhood during the entire time. Mr. Crawford, besides being a useful private citizen, has served several terms in the state legislature, and at its last session he represented this district in the state senate.

Besides his wife, he is survived by two sons, James E. Crawford, a well known young real estate man of this city; George C. Crawford, a dental surgeon, and three daughters, Misses Ethel and Belle Crawford and Mrs. Frank Cullen. Mr. Crawford served in the Confederate army, having enlisted in Tennessee, and was a member of the Fifth Tennessee Infantry.

KILLED BY AUTO.

The following item from Clearwater will be read with sorrow by the Sanford friends of the deceased, who visited here many times with his daughter, Mrs. C. H. Dingee:

Clearwater, August 14.—Telegrams were received yesterday containing the news that J. Mollitt McClung, a pioneer of this section, had been injured in an automobile accident at Asheville, N. C., and this morning a message came stating that Mr. McClung had died in a hospital at 2 a. m. today.

Mollitt McClung, as he was known by everybody, was one of the most successful grove men in Pinellas county, as well as a financier and large stockholder in the Bank of Clearwater, and director also in the Bank of Dunedin. He was noted throughout the county and South Florida as a man of industry and integrity. Mr. McClung was prominent in the workings of the Presbyterian church and an elder in the Andrews Memorial Presbyterian church of Dunedin.

The deceased came to what is now Pinellas county when a young man, from Virginia. He lived in the Dunedin neighborhood over thirty years, having a large grove and packing house about a mile from that town. Mr. McClung is survived by a widow, now at the old home place near here, three sons, J. N. McClung of Clearwater, Percy McClung of Andalusia, Ala., and another son in Jacksonville and three daughters, Mrs. C. H. Dingee and Misses Gertrude and Mary McClung of Dunedin and Mrs. Bertha Bull of Jacksonville, besides a number of grandchildren.

Mr. McClung's age was 72 years. His death has cast a gloom over the entire community, where he was much beloved and respected. The body will be brought from North Carolina to the Dunedin home, arriving on Sunday. Announcement of the funeral arrangements has not yet been made.

GET YOUR COPY IN EARLY.

On account of the rush of job work and advertising, The Herald office is very, very busy, day and night, and we would like to ask those who have either advertising copy or news matter to get this stuff in as early as possible, and not wait until Friday mornings, as we are in the midst of a rush then and your copy is not to be left out. Bring it in, phone it, or we will come after it. We want it in the paper and we want it as soon as we can get it.

Rhode Island Red Fryers 50c per pound

KLIM AGENCY FOR THE KLIM POWDERED MILK

1 lb. Cans . . . \$.90
2 1-2 lb. Cans . . . 1.80

KLIM POWDERED SKIM MILK

1 lb. Cans . . . \$.65
2 1-2 lb. Cans . . . 1.30

24 lb. Obelisk Flour . . \$2.00
96 " Gold Medal Flour 8.25
Compound Lard, pound . .25
Pt. Cans Wesson Oil . .40
Large Size P. U. Butter .40
All Good Oleo, pound . .45
Churn Gold Oleo . . .50
Granulated Sugar . . .25
2 lb. Can Van Camps
Pork and Beans . . .20
Good Corn, Doz. . .1.65
2 lb. cans Tomatoes, doz 1.55
Best Rice, pound . . .15
3 1 lb. cans Roast Beef 1.00
3 1 lb. cans Corned " 1.00
3 2 lb. cans Tripe . .1.00
Potted Ham, doz. . . .60
Best Brooms, each 75c, \$1.00,
\$1.25, \$1.50, \$1.75

8 lb. cans Snow Drift
Lard 2.25
3 lbs. Best Cream Cheese 1.00
6 lb. cans Crisco . . .1.90
3 " " " . . .1.10
5 lbs. Baby Lima Beans .85
6 " B. E. Peas, Fresh .75
6 " Navy Beans . . .75
Green Split Peas, pound .15
Fruit Jars, Pints and Quarts
Seedless Raisins 3 pkgs 1.00
Seeded " 3 " 1.00
Gal. Cans Peacock Syrup 1.50
1 lb. Boxes Boneless
Herring . . .50c Box
Virginia Cobbles Irish
Potatoes85 pk.
3 lbs. California Onions 25c

L. P. McCULLER

Sanford, :: Florida



The following were up before Judge Maines in municipal court since our last issue:

- Alhman, drunk; bond estreated.
- H. H. King, exceeding speed limit; \$10 bond estreated.
- H. C. Washburn, exceeding speed limit; \$5 and costs.
- R. McPherson, disorderly conduct; \$10 and costs.
- Emmett Hardy, violating section 131; case continued.
- John Schellfeld, disorderly; suspended on costs.
- James Agnew, violation section 132 case continued.
- J. Jabson, exceeding speed limit; \$10 bond estreated.
- J. Jabson, reckless driving; \$5 and costs.
- Lizzie Blair, assault; \$20 and costs.
- L. J. Chisholm, running car without tail light; \$1 and costs.
- T. Chisholm, exceeding speed limit; \$5 and costs.
- Pollie Martin, disorderly; sentence suspended on payment of costs.
- T. W. Warren, disorderly, fighting etc.; \$15 and costs.
- Sylvester Miller, disorderly and fighting; \$10 and costs.

Mr. and Mrs. T. C. Vincent of Vero are in the city, the guests of R. J.

Optician



Eyes Tested

Lenses Ground
GLASSES ADJUSTED
and REPAIRED
L. A. BRAND
Optometrist-Optician
221 E. First Street
Opposite Postoffice

Holly for a few days. They are visiting friends and relatives in Tampa and Jacksonville during the summer months and expect to leave for the East Coast about the first of September. Mr. Vincent will dispose of his fine orange grove and truck farm there and move to Sanford where he intends to purchase a grove and truck farm and live in a real country.

LEGAL ADVERTISEMENTS

NOTICE OF APPLICATION FOR TAX DEED.

Under Section 272 of the General Statutes. Notice is hereby given that

M. D. BUKETT
Purchaser of Tax Certificate No. 562 dated the 23rd day of July, A. D. 1915, has filed said certificate in my office and has made application for tax deed to issue in accordance with law. Said certificate embraces the following described property situated in Seminole County, Florida, to-wit:

East 150 ft. of Lot 18 in an D. A. E. Grantee Sub. Div. recorded in Plat Book 2, Page 41.

The said land being assessed at the date of issuance of such certificate in the name of Pearl E. Stevens.

Also Tax Certificate No. 585, dated the 23rd day of July, A. D. 1915, has filed said certificate in my office and has made application for tax deed to issue in accordance with law. Said certificate embraces the following described property situated in Seminole County, Florida, to-wit:

Lot 21 in E. A. Grantee's Sub. Div. plat No. 2, recorded in Plat Book 2, Page 41.

The said land being assessed at the date of issuance of such certificate in the name of A. E. Griffin.

On the 23rd day of October, A. D. 1920, according to law, tax deed will issue thereon unless said certificates shall be redeemed as provided by law.

Witness my official signature and seal this 18th day of August, A. D. 1920.

E. A. DOUGLASS, Clerk
of the County of Seminole, Florida.

IN THE CIRCUIT COURT, SEVENTH JUDICIAL CIRCUIT IN AND FOR SEMINOLE COUNTY, FLORIDA

IN CHANCERY

SLAVIA COLONY COMPANY, Complainant.

vs.

ORDER OF PUBLICATION

Defendants.

That J. C. McBride, et al., Defendants, the heirs of Joseph Alexander, deceased, Savannah, Florida, a corporation under the laws of the State of Florida, Robert H. Ramsey and Pansy his wife, William L. A. Ellis, Trustee for Martha J. Ellis and her two daughters, Martha V. Ellis and Mary W. Ellis, A. P. Farnell, Trustee for Georgia Farnell, his wife and her children, Georgia Farnell and the children of A. P. Farnell and Georgia Farnell, H. W. Butler and his wife, H. D. Stevens and his wife, Stevens his wife, R. W. Taylor and his wife, Taylor his wife, W. G. Collier and his wife, Collier his wife, Daniel Hick and his wife, Hick his wife, Simon W. Taylor and his wife, Taylor his wife, Lewis Home and his wife, Home his wife, Gustavus A. Pottaway and his wife, Pottaway his wife, John L. Branch and his wife, Branch his wife, John W. Currie and his wife, Currie his wife, J. W. Huss and his wife, Huss his wife, Warren F. Laramore and his wife, Laramore his wife, Kate Board, Harry A. Board and his wife, Board his wife, L. Fernald Day and his wife, Day his wife, W. W. Bell and his wife, Bell his wife, and E. M. McNatt and his wife, McNatt.

A. Purdee and his wife, Purdee his wife, W. F. Laramore and his wife, Laramore his wife, Kate Board, Harry A. Board and his wife, Board his wife, L. Fernald Day and his wife, Day his wife, W. W. Bell and his wife, Bell his wife, and E. M. McNatt and his wife, McNatt.

It appearing from the affidavit of Geo. J. Schell, the agent of the Complainant in the above suit, that it is the belief of the said agent that the places of residence of the above named defendants are unknown, that there is no person in the State of Florida the address of a subpoena upon whom would bind said defendants, and that it is his belief that the said defendants are not the age of majority, he has, therefore, ordered to appear to the bill of complaint filed in said cause on Monday, the 1st day of November, A. D. 1920, the same being a full day of this Court. That this notice be published for eight consecutive weeks in The Sanford Herald, a newspaper of general circulation published in Sanford, Seminole County, Florida.

WITNESS E. A. DOUGLASS, Clerk of the said Circuit Court, and the seal of said Court this 18th day of August, A. D. 1920.

E. A. DOUGLASS, Clerk
of the County of Seminole, Florida.

TO PROPERTY OWNERS

NOTICE HEREBY NOTIFIED: That the City Commission of the City of Sanford, Florida, did on the 14th day of June, A. D. 1920, pass a resolution providing for and requiring grading, paving and drainage of that portion of Palmetto Avenue beginning at Second Street and extending south to Tenth Street, in accordance with plans and specifications on file in the office of the City Manager, that the Assessment has tentatively determined upon and returned the assessment of each lot, piece or parcel of land abutting upon the aforesaid Avenue between the points there designated; that the total estimated cost of the improvement is \$31,371.00; that the estimated advantage to your property is:

Lot 1, E. R. Roberts, Lot 6, Block 9, Tier 1, E. R. Traford's Map of Sanford, is \$244.00.
Lot 2, E. R. Roberts, Lot 7, Block 9, Tier 1, E. R. Traford's Map of Sanford, is \$244.00.
Lot 3, E. R. Roberts, Lot 8, Block 9, Tier 1, E. R. Traford's Map of Sanford, is \$244.00.
Lot 4, E. R. Roberts, Lot 9, Block 9, Tier 1, E. R. Traford's Map of Sanford, is \$244.00.
Lot 5, E. R. Roberts, Lot 10, Block 9, Tier 1, E. R. Traford's Map of Sanford, is \$244.00.
Lot 6, E. R. Roberts, Lot 11, Block 9, Tier 1, E. R. Traford's Map of Sanford, is \$244.00.
Lot 7, E. R. Roberts, Lot 12, Block 9, Tier 1, E. R. Traford's Map of Sanford, is \$244.00.
Lot 8, E. R. Roberts, Lot 13, Block 9, Tier 1, E. R. Traford's Map of Sanford, is \$244.00.
Lot 9, E. R. Roberts, Lot 14, Block 9, Tier 1, E. R. Traford's Map of Sanford, is \$244.00.
Lot 10, E. R. Roberts, Lot 15, Block 9, Tier 1, E. R. Traford's Map of Sanford, is \$244.00.
Lot 11, E. R. Roberts, Lot 16, Block 9, Tier 1, E. R. Traford's Map of Sanford, is \$244.00.
Lot 12, E. R. Roberts, Lot 17, Block 9, Tier 1, E. R. Traford's Map of Sanford, is \$244.00.
Lot 13, E. R. Roberts, Lot 18, Block 9, Tier 1, E. R. Traford's Map of Sanford, is \$244.00.
Lot 14, E. R. Roberts, Lot 19, Block 9, Tier 1, E. R. Traford's Map of Sanford, is \$244.00.
Lot 15, E. R. Roberts, Lot 20, Block 9, Tier 1, E. R. Traford's Map of Sanford, is \$244.00.

And that the Engineering Board will meet at their office, at 10 o'clock, A. M., on the 23rd day of August, 1920, in the office of the City Manager to hear and consider the report of the City Manager to that effect, and you may have to make a deposit of cash for the same.

I. B. PHILLIPS
City Engineer

IN CIRCUIT COURT, SEVENTH JUDICIAL CIRCUIT IN AND FOR SEMINOLE COUNTY, FLORIDA

IN CHANCERY

SLAVIA COLONY COMPANY, Complainant.

vs.

ORDER OF PUBLICATION

Defendants.

That the unknown heirs, executors, administrators, legatees, grantees or other persons claiming an interest in the following described property situated in Seminole County, Florida, to-wit: The Southwest quarter of the Southwest quarter and the Northwest quarter of the Southwest quarter of Section 29, and the Southwest quarter of Section 30, of Township 21, South Range 31 East 10, and the Southwest quarter of Section 31, of Township 21, South Range 31 East 10, and the Southwest quarter of Section 32, of Township 21, South Range 31 East 10, and the Southwest quarter of Section 33, of Township 21, South Range 31 East 10, and the Southwest quarter of Section 34, of Township 21, South Range 31 East 10, and the Southwest quarter of Section 35, of Township 21, South Range 31 East 10, and the Southwest quarter of Section 36, of Township 21, South Range 31 East 10, and the Southwest quarter of Section 37, of Township 21, South Range 31 East 10, and the Southwest quarter of Section 38, of Township 21, South Range 31 East 10, and the Southwest quarter of Section 39, of Township 21, South Range 31 East 10, and the Southwest quarter of Section 40, of Township 21, South Range 31 East 10, and the Southwest quarter of Section 41, of Township 21, South Range 31 East 10, and the Southwest quarter of Section 42, of Township 21, South Range 31 East 10, and the Southwest quarter of Section 43, of Township 21, South Range 31 East 10, and the Southwest quarter of Section 44, of Township 21, South Range 31 East 10, and the Southwest quarter of Section 45, of Township 21, South Range 31 East 10, and the Southwest quarter of Section 46, of Township 21, South Range 31 East 10, and the Southwest quarter of Section 47, of Township 21, South Range 31 East 10, and the Southwest quarter of Section 48, of Township 21, South Range 31 East 10, and the Southwest quarter of Section 49, of Township 21, South Range 31 East 10, and the Southwest quarter of Section 50, of Township 21, South Range 31 East 10, and the Southwest quarter of Section 51, of Township 21, South Range 31 East 10, and the Southwest quarter of Section 52, of Township 21, South Range 31 East 10, and the Southwest quarter of Section 53, of Township 21, South Range 31 East 10, and the Southwest quarter of Section 54, of Township 21, South Range 31 East 10, and the Southwest quarter of Section 55, of Township 21, South Range 31 East 10, and the Southwest quarter of Section 56, of Township 21, South Range 31 East 10, and the Southwest quarter of Section 57, of Township 21, South Range 31 East 10, and the Southwest quarter of Section 58, of Township 21, South Range 31 East 10, and the Southwest quarter of Section 59, of Township 21, South Range 31 East 10, and the Southwest quarter of Section 60, of Township 21, South Range 31 East 10, and the Southwest quarter of Section 61, of Township 21, South Range 31 East 10, and the Southwest quarter of Section 62, of Township 21, South Range 31 East 10, and the Southwest quarter of Section 63, of Township 21, South Range 31 East 10, and the Southwest quarter of Section 64, of Township 21, South Range 31 East 10, and the Southwest quarter of Section 65, of Township 21, South Range 31 East 10, and the Southwest quarter of Section 66, of Township 21, South Range 31 East 10, and the Southwest quarter of Section 67, of Township 21, South Range 31 East 10, and the Southwest quarter of Section 68, of Township 21, South Range 31 East 10, and the Southwest quarter of Section 69, of Township 21, South Range 31 East 10, and the Southwest quarter of Section 70, of Township 21, South Range 31 East 10, and the Southwest quarter of Section 71, of Township 21, South Range 31 East 10, and the Southwest quarter of Section 72, of Township 21, South Range 31 East 10, and the Southwest quarter of Section 73, of Township 21, South Range 31 East 10, and the Southwest quarter of Section 74, of Township 21, South Range 31 East 10, and the Southwest quarter of Section 75, of Township 21, South Range 31 East 10, and the Southwest quarter of Section 76, of Township 21, South Range 31 East 10, and the Southwest quarter of Section 77, of Township 21, South Range 31 East 10, and the Southwest quarter of Section 78, of Township 21, South Range 31 East 10, and the Southwest quarter of Section 79, of Township 21, South Range 31 East 10, and the Southwest quarter of Section 80, of Township 21, South Range 31 East 10, and the Southwest quarter of Section 81, of Township 21, South Range 31 East 10, and the Southwest quarter of Section 82, of Township 21, South Range 31 East 10, and the Southwest quarter of Section 83, of Township 21, South Range 31 East 10, and the Southwest quarter of Section 84, of Township 21, South Range 31 East 10, and the Southwest quarter of Section 85, of Township 21, South Range 31 East 10, and the Southwest quarter of Section 86, of Township 21, South Range 31 East 10, and the Southwest quarter of Section 87, of Township 21, South Range 31 East 10, and the Southwest quarter of Section 88, of Township 21, South Range 31 East 10, and the Southwest quarter of Section 89, of Township 21, South Range 31 East 10, and the Southwest quarter of Section 90, of Township 21, South Range 31 East 10, and the Southwest quarter of Section 91, of Township 21, South Range 31 East 10, and the Southwest quarter of Section 92, of Township 21, South Range 31 East 10, and the Southwest quarter of Section 93, of Township 21, South Range 31 East 10, and the Southwest quarter of Section 94, of Township 21, South Range 31 East 10, and the Southwest quarter of Section 95, of Township 21, South Range 31 East 10, and the Southwest quarter of Section 96, of Township 21, South Range 31 East 10, and the Southwest quarter of Section 97, of Township 21, South Range 31 East 10, and the Southwest quarter of Section 98, of Township 21, South Range 31 East 10, and the Southwest quarter of Section 99, of Township 21, South Range 31 East 10, and the Southwest quarter of Section 100, of Township 21, South Range 31 East 10, and the Southwest quarter of Section 101, of Township 21, South Range 31 East 10, and the Southwest quarter of Section 102, of Township 21, South Range 31 East 10, and the Southwest quarter of Section 103, of Township 21, South Range 31 East 10, and the Southwest quarter of Section 104, of Township 21, South Range 31 East 10, and the Southwest quarter of Section 105, of Township 21, South Range 31 East 10, and the Southwest quarter of Section 106, of Township 21, South Range 31 East 10, and the Southwest quarter of Section 107, of Township 21, South Range 31 East 10, and the Southwest quarter of Section 108, of Township 21, South Range 31 East 10, and the Southwest quarter of Section 109, of Township 21, South Range 31 East 10, and the Southwest quarter of Section 110, of Township 21, South Range 31 East 10, and the Southwest quarter of Section 111, of Township 21, South Range 31 East 10, and the Southwest quarter of Section 112, of Township 21, South Range 31 East 10, and the Southwest quarter of Section 113, of Township 21, South Range 31 East 10, and the Southwest quarter of Section 114, of Township 21, South Range 31 East 10, and the Southwest quarter of Section 115, of Township 21, South Range 31 East 10, and the Southwest quarter of Section 116, of Township 21, South Range 31 East 10, and the Southwest quarter of Section 117, of Township 21, South Range 31 East 10, and the Southwest quarter of Section 118, of Township 21, South Range 31 East 10, and the Southwest quarter of Section 119, of Township 21, South Range 31 East 10, and the Southwest quarter of Section 120, of Township 21, South Range 31 East 10, and the Southwest quarter of Section 121, of Township 21, South Range 31 East 10, and the Southwest quarter of Section 122, of Township 21, South Range 31 East 10, and the Southwest quarter of Section 123, of Township 21, South Range 31 East 10, and the Southwest quarter of Section 124, of Township 21, South Range 31 East 10, and the Southwest quarter of Section 125, of Township 21, South Range 31 East 10, and the Southwest quarter of Section 126, of Township 21, South Range 31 East 10, and the Southwest quarter of Section 127, of Township 21, South Range 31 East 10, and the Southwest quarter of Section 128, of Township 21, South Range 31 East 10, and the Southwest quarter of Section 129, of Township 21, South Range 31 East 10, and the Southwest quarter of Section 130, of Township 21, South Range 31 East 10, and the Southwest quarter of Section 131, of Township 21, South Range 31 East 10, and the Southwest quarter of Section 132, of Township 21, South Range 31 East 10, and the Southwest quarter of Section 133, of Township 21, South Range 31 East 10, and the Southwest quarter of Section 134, of Township 21, South Range 31 East 10, and the Southwest quarter of Section 135, of Township 21, South Range 31 East 10, and the Southwest quarter of Section 136, of Township 21, South Range 31 East 10, and the Southwest quarter of Section 137, of Township 21, South Range 31 East 10, and the Southwest quarter of Section 138, of Township 21, South Range 31 East 10, and the Southwest quarter of Section 139, of Township 21, South Range 31 East 10, and the Southwest quarter of Section 140, of Township 21, South Range 31 East 10, and the Southwest quarter of Section 141, of Township 21, South Range 31 East 10, and the Southwest quarter of Section 142, of Township 21, South Range 31 East 10, and the Southwest quarter of Section 143, of Township 21, South Range 31 East 10, and the Southwest quarter of Section 144, of Township 21, South Range 31 East 10, and the Southwest quarter of Section 145, of Township 21, South Range 31 East 10, and the Southwest quarter of Section 146, of Township 21, South Range 31 East 10, and the Southwest quarter of Section 147, of Township 21, South Range 31 East 10, and the Southwest quarter of Section 148, of Township 21, South Range 31 East 10, and the Southwest quarter of Section 149, of Township 21, South Range 31 East 10, and the Southwest quarter of Section 150, of Township 21, South Range 31 East 10, and the Southwest quarter of Section 151, of Township 21, South Range 31 East 10, and the Southwest quarter of Section 152, of Township 21, South Range 31 East 10, and the Southwest quarter of Section 153, of Township 21, South Range 31 East 10, and the Southwest quarter of Section 154, of Township 21, South Range 31 East 10, and the Southwest quarter of Section 155, of Township 21, South Range 31 East 10, and the Southwest quarter of Section 156, of Township 21, South Range 31 East 10, and the Southwest quarter of Section 157, of Township 21, South Range 31 East 10, and the Southwest quarter of Section 158, of Township 21, South Range 31 East 10, and the Southwest quarter of Section 159, of Township 21, South Range 31 East 10, and the Southwest quarter of Section 160, of Township 21, South Range 31 East 10, and the Southwest quarter of Section 161, of Township 21, South Range 31 East 10, and the Southwest quarter of Section 162, of Township 21, South Range 31 East 10, and the Southwest quarter of Section 163, of Township 21, South Range 31 East 10, and the Southwest quarter of Section 164, of Township 21, South Range 31 East 10, and the Southwest quarter of Section 165, of Township 21, South Range 31 East 10, and the Southwest quarter of Section 166, of Township 21, South Range 31 East 10, and the Southwest quarter of Section 167, of Township 21, South Range 31 East 10, and the Southwest quarter of Section 168, of Township 21, South Range 31 East 10, and the Southwest quarter of Section 169, of Township 21, South Range 31 East 10, and the Southwest quarter of Section 170, of Township 21, South Range 31 East 10, and the Southwest quarter of Section 171, of Township 21, South Range 31 East 10, and the Southwest quarter of Section 172, of Township 21, South Range 31 East 10, and the Southwest quarter of Section 173, of Township 21, South Range 31 East 10, and the Southwest quarter of Section 174, of Township 21, South Range 31 East 10, and the Southwest quarter of Section 175, of Township 21, South Range 31 East 10, and the Southwest quarter of Section 176, of Township 21, South Range 31 East 10, and the Southwest quarter of Section 177, of Township 21, South Range 31 East 10, and the Southwest quarter of Section 178, of Township 21, South Range 31 East 10, and the Southwest quarter of Section 179, of Township 21, South Range 31 East 10, and the Southwest quarter of Section 180, of Township 21, South Range 31 East 10, and the Southwest quarter of Section 181, of Township 21, South Range 31 East 10, and the Southwest quarter of Section 182, of Township 21, South Range 31 East 10, and the Southwest quarter of Section 183, of Township 21, South Range 31 East 10, and the Southwest quarter of Section 184, of Township 21, South Range 31 East 10, and the Southwest quarter of Section 185, of Township 21, South Range 31 East 10, and the Southwest quarter of Section 186, of Township 21, South Range 31 East 10, and the Southwest quarter of Section 187, of Township 21, South Range 31 East 10, and the Southwest quarter of Section 188, of Township 21, South Range 31 East 10, and the Southwest quarter of Section 189, of Township 21, South Range 31 East 10, and the Southwest quarter of Section 190, of Township 21, South Range 31 East 10, and the Southwest quarter of Section 191, of Township 21, South Range 31 East 10, and the Southwest quarter of Section 192, of Township 21, South Range 31 East 10, and the Southwest quarter of Section 193, of Township 21, South Range 31 East 10, and the Southwest quarter of Section 194, of Township 21, South Range 31 East 10, and the Southwest quarter of Section 195, of Township 21, South Range 31 East 10, and the Southwest quarter of Section 196, of Township 21, South Range 31 East 10, and the Southwest quarter of Section 197, of Township 21, South Range 31 East 10, and the Southwest quarter of Section 198, of Township 21, South Range 31 East 10, and the Southwest quarter of Section 199, of Township 21, South Range 31 East 10, and the Southwest quarter of Section 200, of Township 21, South Range 31 East 10, and the Southwest quarter of Section 201, of Township 21, South Range 31 East 10, and the Southwest quarter of Section 202, of Township 21, South Range 31 East 10, and the Southwest quarter of Section 203, of Township 21, South Range 31 East 10, and the Southwest quarter of Section 204, of Township 21, South Range 31 East 10, and the Southwest quarter of Section 205, of Township 21, South Range 31 East 10, and the Southwest quarter of Section 206, of Township 21, South Range 31 East 10, and the Southwest quarter of Section 207, of Township 21, South Range 31 East 10, and the Southwest quarter of Section 208, of Township 21, South Range 31 East 10, and the Southwest quarter of Section 209, of Township 21, South Range 31 East 10, and the Southwest quarter of Section 210, of Township 21, South Range 31 East 10, and the Southwest quarter of Section 211, of Township 21, South Range 31 East 10, and the Southwest quarter of Section 212, of Township 21, South Range 31 East 10, and the Southwest quarter of Section 213, of Township 21, South Range 31 East 10, and the Southwest quarter of Section 214, of Township 21, South Range 31 East 10, and the Southwest quarter of Section 215, of Township 21, South Range 31 East 10, and the Southwest quarter of Section 216, of Township 21, South Range 31 East 10, and the Southwest quarter of Section 217, of Township 21, South Range 31 East 10, and the Southwest quarter of Section 218, of Township 21, South Range 31 East 10, and the Southwest quarter of Section 219, of Township 21, South Range 31 East 10, and the Southwest quarter of Section 220, of Township 21, South Range 31 East 10, and the Southwest quarter of Section 221, of Township 21, South Range 31 East 10, and the Southwest quarter of Section 222, of Township 21, South Range 31 East 10, and the Southwest quarter of Section 223, of Township 21, South Range 31 East 10, and the Southwest quarter of Section 224, of Township 21, South Range 31 East 10, and the Southwest quarter of Section 225, of Township 21, South Range 31 East 10, and the Southwest quarter of Section 226, of Township 21, South Range 31 East 10, and the Southwest quarter of Section 227, of Township 21, South Range 31 East 10, and the Southwest quarter of Section 228, of Township 21, South Range 31 East 10, and the Southwest quarter of Section 229, of Township 21, South Range 31 East 10, and the Southwest quarter of Section 230, of Township 21, South Range 31 East 10, and the Southwest quarter of Section 231, of Township 21, South Range 31 East 10, and the Southwest quarter of Section 232, of Township 21, South Range 31 East 10, and the Southwest quarter of Section 233, of Township 21, South Range 31 East 10, and the Southwest quarter of Section 234, of Township 21, South Range 31 East 10, and the Southwest quarter of Section 235, of Township 21, South Range 31 East 10, and the Southwest quarter of Section 236, of Township 21, South Range 31 East 10, and the Southwest quarter of Section 237, of Township 21, South Range 31 East 10, and the Southwest quarter of Section 238, of Township 21, South Range 31 East 10, and the Southwest quarter of Section 239, of Township 21, South Range 31 East 10, and the Southwest quarter of Section 240, of Township 21, South Range 31 East 10, and the Southwest quarter of Section 241, of Township 21, South Range 31 East 10, and the Southwest quarter of Section 242, of Township 21, South Range 31 East 10, and the Southwest quarter of Section 243, of Township 21, South Range 31 East 10, and the Southwest quarter of Section 244, of Township 21, South Range 31 East 10, and the Southwest quarter of Section 245, of Township 21, South Range 31 East 10, and the Southwest quarter of Section 246, of Township 21, South Range 31 East 10, and the Southwest quarter of Section 247, of Township 21, South Range 31 East 10, and the Southwest quarter of Section 248, of Township 21, South Range 31 East 10, and the Southwest quarter of Section 249, of Township 21, South Range 31 East 10, and the Southwest quarter of Section 250, of Township 21, South Range 31 East 10, and the Southwest quarter of Section 251, of Township 21, South Range 31 East 10, and the Southwest quarter of Section 252, of Township 21, South Range 31 East 10, and the Southwest quarter of Section 253, of Township 21, South Range 31 East 10, and the Southwest quarter of Section 254, of Township 21, South Range 31 East 10, and the Southwest quarter of Section 255, of Township 21, South Range 31 East 10, and the Southwest quarter of Section 256, of Township 21, South Range 31 East 10, and the Southwest quarter of Section 257, of Township 21, South Range 31 East 10, and the Southwest quarter of Section 258, of Township 21, South Range 31 East 10, and the Southwest quarter of Section 259, of Township 21, South Range 31 East 10, and the Southwest quarter of Section 260, of Township 21, South Range 31 East 10, and the Southwest quarter of Section 261, of Township 21, South Range 31 East 10, and the Southwest quarter of Section 262, of Township 21, South Range 31 East 10, and the Southwest quarter of Section 263, of Township 21, South Range 31 East 10, and the Southwest quarter of Section 264, of Township 21, South Range 31 East 10, and the Southwest quarter of Section 265, of Township 21, South Range 31 East 10, and the Southwest quarter of Section 266, of Township 21, South Range 31 East 10, and the Southwest quarter of Section 267, of Township 21, South Range 31 East 10, and the Southwest quarter of Section 268, of Township 21, South Range 31 East 10, and the Southwest quarter of Section 269, of Township 21, South Range 31 East 10, and the Southwest quarter of Section 270, of Township 21, South Range 31 East 10, and the Southwest quarter of Section 271, of Township 21, South Range 31 East 10, and the Southwest quarter of Section 272, of Township 21, South Range 31 East 10, and the Southwest quarter of Section 273, of Township 21, South Range 31 East 10, and the Southwest quarter of Section 274, of Township 21, South Range 31 East 10, and the Southwest quarter of Section 275, of Township 21, South Range 31 East 10, and the Southwest quarter of Section 276, of Township 21, South Range 31 East 10, and the Southwest quarter of Section 277, of Township 21, South Range 31 East 10, and the Southwest quarter of Section 278, of Township 21, South Range 31 East 10, and the Southwest quarter of Section 279, of Township 21, South Range 31 East 10, and the Southwest quarter of Section 280, of Township 21, South Range 31 East 10, and the Southwest quarter of Section 281, of Township 21, South Range 31 East 10, and the Southwest quarter of Section 282, of Township 21, South Range 31 East 10, and the Southwest quarter of Section 283, of Township 21, South Range 31 East 10, and the Southwest quarter of Section 284, of Township 21, South Range 31 East 10, and the Southwest quarter of Section 285, of Township 21, South Range 31 East 10, and the Southwest quarter of Section 286, of Township 21, South Range 31 East 10, and the Southwest quarter of Section 287, of Township 21, South Range 31 East 10, and the Southwest quarter of Section 288, of Township 21, South Range 31 East 10, and the Southwest quarter of Section 289, of Township 21, South Range 31 East 10, and the Southwest quarter of Section 290, of Township 21, South Range 31 East 10, and the Southwest quarter of Section 291, of Township 21, South Range 31 East 10, and the Southwest quarter of Section 292, of Township 21, South Range 31 East 10, and the Southwest quarter of Section 293, of Township 21, South Range 31 East 10, and the Southwest quarter of Section 294, of Township 21, South Range 31 East 10, and the Southwest quarter of Section 295, of Township 21, South Range 31 East 10, and the

ELDER SPRINGS WATER

THOMAS D. BAKER, Ph. D.
 Analytical and Consulting Chemist Professional of Natural Science
 Emeritus, Rollins College, Florida
 Private Laboratory of Rollins College
 Winter Park, Fla., Nov. 31st, 1918

Mr. T. O. Charles
 Sanford, Fla.

Dear Sir:
 I have completed careful chemical analysis of the sample of water that you brought me early last week, and have obtained the following results:

Color	Clear	Chlorine	1.75 parts per million
Reaction	Neutral	Total solids	4.00 parts per million
Free Ammonia	0.00 parts per million	Hardness	23.00 parts per million
Albuminoid ammonia	Trace	Nitrate	Trace

The absence practically of free and albuminoid ammonia in this water and its very small amount of chlorine indicates its excellent quality for household purposes. In addition to the good quality characteristics of superior household water, it possesses special features of much value, especially those of excellent taste, aeration and 100% degree of hardness.

The bacteriological analysis, resulting in an average total count, in four samples of the water, of 3 bacteria per cent; and in finding no coliform or other harmful bacteria, fully confirm its good quality indicated by the CHEMICAL analysis.

Of the many waters of this and other regions that I have analyzed, I have found none superior in all good qualities to that of the "Elder Water."

Yours very respectfully,
 (Signed) THOMAS D. BAKER

T. O. CHARLES, Distributor
 TELEPHONE 311-W 111 PARK AVE. SANFORD, FLORIDA

Rann-dom Reels

By HOWARD L. RANN
 THE NAVY BEAN

THE navy bean is a lowly form of vegetation carrying a retreating forehead and a threatening price tag. The strains to which the aristocracy of this country are reduced is shown by the fact that a few years ago the navy bean was about as popular a form of diet as the half-sided round steak, whereas now it is more sought after than a red-haired girl who has been left four farms and an armful of bank stock. It is a pitiful sight to see a once proud family whose members have always lived on pork tenderloin and pineapple tea now struggling feverishly to digest the tenacious navy bean, after it has been run through a laxy cooker over night.

The navy bean never found its way

to the dining table of the rich until the European war broke out in several spots. Practically all of the navy beans raised in this country were fed to the regular army and to people of the middle class with small incomes and cork-lined stomachs. When a man enlists in the army or navy he is supposed to entrust his belongings, including his stomach, to the fatherly care of the government, and it has been found by long observation that the egg-shaped



"The price is now prohibitive to all except the idle rich."

navy bean will sustain life longer and at less expense than any other article of food except pure Timothy hay.

A year or two ago a quart of navy beans could be bought for a few cents and when properly prepared would cause the stoutest appetite to languish along about the fifth round. But so many of these beans have been shipped abroad that the price is now prohibitive to all except the idle rich. It is stated that when the Russians ran out of ammunition they loaded their rifles with the American navy bean and discharged them at the foe with gratifying results. But this is an unwarranted reflection upon one of the grandest articles of food which ever tickled the human palate.



EXPERT VULCANIZING

THE INSIDE IS IMPORTANT.

Don't forget that it is just as necessary to have your inner tubes strong, flexible and durable the same as your outer shoes, and our vulcanizing process will do this for you. It's the best tire insurance you could put your tire money into, for it doubles, often triples, the life of both tires and tubes. We are vulcanizing specialists.

KENT VULCANIZING WORKS
 PHONE 17
 Oak and 3rd St. Sanford, Florida

Justice

By GEORGE MATTHEW ADAMS

MUCH of the serenity of this world is wrapped within the ordinary principles of Justice. And the simplest

thing of it all is that Justice for each one of us lies within each one of us. Just as soon as we become convinced of the Justice of a Man or a Cause or a Fact, we become immediately reconciled to the personal relationship which that Man or Cause or Fact has toward us. And if our Viewpoint is correct, without hesitation, we trust the Just Man, we become a part of the Just Cause—we take ownership of the Just Fact.

Justice is the twin-brother of Truth. And if our attitude toward the Truth—which is a composite of the highest things in life—is correct, to have Justice within us and to distribute it to those about us, is the highest Happiness.

There is nothing that so arouses the indignation and red-blood of a man as to feel that Justice is being done to anyone anywhere. For Justice is an instinct as deeply rooted in our consciousness as our sense of Right and Wrong, of which indeed it is part and parcel. So that—

For you to fully feel Justice in the outer world, you must first be Just toward yourself, when it will be reflected in your opinion and judgment of Justice as a working principle toward other people.

If things about you appear to be all out of kink, the most foolish thing you can possibly do is to begin to criticize outside forces and outside conditions. Begin right where you are and take account of yourself. Muster your many abilities and powers together. Take account of their activities. Is each doing its share? Rearrange. Get started on a new plane and you will be surprised at what a great amount of Justice there is everywhere and at all times.

ITS "CULTURE" A TRADITION

"Highbrow" City of Bogota, in Colombia, Does Not Really Live Up to Its Reputation.

Bogota, the capital of the Republic of Colombia, is a sort of South American Boston. Ever since the days when it was a colony of Spain it has been accounted a "highbrow" town and its name has been associated with literature, art, science and education. It is filled with sculpture, which ranges in subject from local heroes to great figures in Spanish history. There are many schools and colleges, a museum and an astronomical observatory.

Despite all this, the intellectual atmosphere of Bogota is more of a tradition than a reality. No great works of art have been produced there. The city is full of poets, but that is true of every city in Latin America, where young men and women compose and recite poetry as a social diversion. Just as they play the piano and sing songs in this country. The scientists of Bogota have made some real progress, especially in archeology and natural history.

Many of the people of Bogota are Spaniards of the purest descent. When the country was colonized by the Spaniards centuries ago the colonists retired to the high Andean region and have lived there ever since in an isolation which has kept them true to type. These Spaniards form the ruling class, the rest of the people being "mestizo" of mixed Spanish and Indian blood.

Bogota is situated at an elevation of almost 9000 feet and enjoys a splendid climate.

Seeds!

Celery, Lettuce, Cauliflower

Our stocks are fresh and are of the best strains that can be secured. Sanford Farmers have been using our "Paris Golden Yellow Self-Blanching Celery Seed" for the past twenty years.

Our "Big Boston Lettuce" and "Early Snowball Cauliflower" have always produced dependable crops. Why experiment? Place your orders early.

Chase & Co.
 Sanford, Florida

Just Folks

By EDGAR A. GUEST

LOST ARGUMENTS.

When in my wisdom I have said
 That it is time to go to bed
 Or crossed their wills with rules and laws
 There comes a pout, and then a pause,
 And then an argument ensues
 In which it seems I always lose.

When I announce that too much pie is had for them, they ask me: "Why?"
 And when I start to prove my case
 They taunt me to my very face.
 And in debate, in which they're strong,
 They soon convince me—I am wrong.
 Time was my judgment they'd accept
 All my commands they bravely kept,
 But now they've reached the reasoning age,
 The answering back and questioning stage;
 Their little minds are keen and swift
 While helplessly I seem to drift.

No more command with them will go
 The reason why they want to know,
 They wear me out. They argue back
 And puncture with their sure attack
 The case I've made, 'til with a grin
 I end their talk by giving in.

'Twould drive a great logician wild
 To argue with a healthy child.
 A thinking boy of four or five
 Could floor the wisest man alive,
 And any bright-eyed little girl
 Can set the calmest brain awirl.

And yet I'm glad those madcap elves
 Are daily thinking for themselves.
 I'm glad they have opinions strong
 On what is right and what is wrong,
 And oh I hope, when older grown,
 In life's debates they'll hold their own.
 (Copyright by Edgar A. Guest)

LIQUID AND CAKE
 THE BIG VALUE PACKAGES

2 IN 1 WHITE SHOE DRESSING
 KEEP YOUR SHOES NEAT

for Women's Children's and Men's Shoes.

THE F. DALLEY CORPORATION, LTD., BUFFALO, N. Y.

Tides in the Bay of Fundy.

The Bay of Fundy is noted for its high tides. At the head of the bay a rise of 62 feet is known, and in Passamaquoddy bay, which indents New Brunswick near the border of the state of Maine, a rise of 55 feet is not uncommon. At St. John the rise varies from 20 to 27 feet. At Moncton the tide rushes up the estuary a crest or wave of water from 3 to 6 feet high. At most places the tide rises gradually but not slowly, each wave rolling up on the shore a little higher than the preceding one. There are two high tides in every 24 hours. For instance, say at 10 o'clock in the forenoon and 10 at night, and on the following day the two high tides will be one hour later, and so on.



"The Telephone, Again, Mr. Brown"

How many times a day are Brown and Smith and Jones of your office called away from their desks to answer the telephone or to make an urgent call?

Loss of time and efficiency results from these interruptions. You can provide the remedy.

Extension telephones on the desks of those who have occasion to use the telephone will work wondrous savings for you.

The cost is only a few cents a week. Call the Manager's office today.

SOUTHERN BELL TELEPHONE AND TELEGRAPH COMPANY

MILITANT MARY

If I could find Time's ruthless clock, I'd turn it back a BIT To one proposal I recall AND RECONSIDER IT!

B. FitzHugh

HUGH S. CUMMINGS



Specialty posed photograph of Hugh S. Cummings, newly appointed surgeon general of the public health service at Washington, D. C.

But they all Come Back to

Pabst
 The Drink of Quality

Armstrong Grocer Co.
 Distributor
 Jacksonville, Fla.

Pabst Kulmbacher, the new Pabst drink, is most satisfying. Its delightful flavor and its heavy dark body will please you. Pabst Kulmbacher can be had at first class places. Don't ask for just Kulmbacher—say "Pabst Kulmbacher."

NOTICE

Now is the time to build that House, Bungalow or Garage that you have talked about so long, as Lumber prices have dropped, but how long it will stay down no one knows. All the Mills advise us to buy as they expect higher prices when the embargoes are lifted. We carry a complete line of

Lumber and Building Material

at all times and will be pleased to receive your orders Large or Small they will be appreciated.

Hill Lumber Co.

The House of Service and Price
Corner 3rd and Myrtle Phone 135

hang back, until memory has brought his subject into the field of vision where he will hold this subject until his remembering eye has seen what he was looking for concretely, and the words he was after come of them selves. They will not be the words that would have come if he had not made this effort to remember.

To the good memory, the memory that can command things seen, heard felt or understood, comes the phrase that nobody ever thought of before, in its fresh exactness.—Phillip Littell.

Furze.

Can you conceive any covering better for the hills of the sun itself than this magnificent furze, as it appears in England, robbing the heaths and commons all over the country? It is a golden undulation, a foreground and from some points of view a mid-air distance, fit to make the richest painter despair, a veritable field of cloth of gold. Morning, when the dawn is of a fineness to match, must look beauty for beauty on it. Sun set is glory. The gold goes marching away in the distance toward the dark trees; like the rich evening of a poetic life. No wonder Linnaeus, when he came to England and first beheld this shrub in bloom, fell on his knees and thanked God.—Leigh Hunt.

Birds Clever Nutcrackers.

There are certain kinds of birds that can crack nuts. The nutcrackers have a clever manner of cracking nuts. They first wedge the nuts in the crevices of the bark of a tree and then pick at them with their bills until the nuts are opened. Woodpeckers use their tails for support as they climb the trunk of a tree, but the nutcrackers usually climb with their tail pointed to the zenith.

When the nutcrackers call it sounds as if they were saying, "Yank, yank, yank," and this strange noise is heard from both the white-breasted and the red-breasted birds, says the American Forestry association of Washington.

Blind Man Knew It.

Knoxville, Tenn.—Government census takers were so surprised when Knoxville reported a population of 77,818, a gain of 11.1 per cent, that they sent investigators here, but W. F. Sandland, totally blind, knew the figures were correct. Following a school census, he announced that the city's population was 77,689. Sandland has perfected a census taking system which has been adopted by the public schools.

COME TO DAYTONA BEACH FOR YOUR HEALTH and place yourself under the care of
DR. E. J. MEINHARDT, CHIROPRACTIC PHYSICIAN
AT THE SEASIDE HOTEL

With the salt air, surf bathing, excellent food and Chiropractic Spinal Adjustments by Dr. Meinhardt you should be sure to improve your health.

Dr. Meinhardt is one of the most competent Chiropractic Physicians of the South and of wide reputation. If you are not in perfect health or suffering from any nervous or chronic disease, you should avail yourself of the opportunity to be under his treatment.

D D'ABERNON



Lord D'Abernon, who has resigned the chairmanship of the central control board (liquor traffic), an office which he has held since the formation of the board in 1915.

Remarkable!

Little Robert was visiting his aunt, who lived in the country. One afternoon, having nothing to do, he walked to the barn to watch the milking process. One of the maids was milking a black cow. Seeing this, little Robert exclaimed: "A black cow and white milk!"

Described.

"Pa, what is an 'oldest expert?'" "A man who claims to be able to teach another man to mind his own business."

Much Credit Due Byron.

Byron is the most romantic of literary cripples. The malformation of his feet was congenital and was a source of lifelong misery, yet he was beloved of many women, had a countenance of singular nobility and even beauty and was the most popular poet in his lifetime in the whole history of English literature. Doubtless his mother's reference to her "lame brat," made in his hearing when a child, had much to do with the smoldering anger with which Byron regarded his lameness and to his defect must be attributed that of his work. Yet Byron is admirable for the way he fought his infirmity. He became a fine boxer, a splendid dancer, and, as everybody knows, he swam the Hellespont in imitation of Ulysses.

Last Night's Dreams

—What They Mean

DID YOU DREAM OF BEAUTY?

A CURIOUS fact brought to light by the study of dream psychology is that, as a rule, the really great and profound sorrows of the day do not follow us into the realm of sleep. In our dream of the night there is always some experience or thought of the day preceding which sets the dream machinery going. It is true, it may be something which has only incidentally been taken cognizance of by our waking consciousness and can only be traced back by a minute and careful analysis of the dream. But, as a rule, the great sorrow and anxiety of the day does not mingle with the dream emotions, say the scientists. This is explained on the theory that our emotions with regard to our great and real affliction have been so exhausted in our waking moments that they have not strength enough left to make themselves manifest amid the throng of other and less "used up" emotions which come trooping from their psychic lairs.

"How often," says Goethe, "have I fallen asleep in tears and beautiful forms and faces have come to give me

peace and comfort in my dreams."

The mystics seem to have realized something of this long before the scientists discovered it; for they say that no matter what our waking fortune may be, to dream of beauty is a most favorable omen. It means for the dreamer peace and plenty; success in his enterprises and the love of those dear to him. In this connection may be mentioned the theory of the scientists that dreams are necessary mental relief; a sort of safety-valve to avoid the too high pressure of those unnumbered thoughts and emotions which have accumulated in the psychic "unconscious" and are always seeking expression.

(Copyright.)

Mother's Cook Book

If you've anything good to say of a man, Don't wait till he's laid to rest; For the eulogy spoken when hearts are broken Is an empty thing at best.

—Donnelly.

Every Day Foods.

If some kidneys are highly prized and in protein value rank next to liver. To prepare kidneys, cut them in half and soak in cold water for three quarters of an hour. Trim and remove all skin and inedible portions, wipe dry on a cloth and serve with scrambled eggs as follows:

Pork Kidneys and Scrambled Eggs.

Cut two pork kidneys in slices and dust with flour. Cook in two tablespoonfuls of any sweet fat over a slow fire for one-half hour, stirring frequently. Season with paprika and salt. Beat four eggs, add four tablespoonfuls of milk, one teaspoonful of salt, and one-quarter of a teaspoonful of pepper. Cook in a frying pan with two tablespoonfuls of fat until the eggs are done. Place the kidneys in the center of a hot dish, serve the kidneys as a border around them, and garnish with squares of toast.

Beef Kidney Stew.

Prepare the kidneys as above. Cut in inch blocks. Place in a saucepan, cover with water, bring to a boil. Drain off the water and blanch in cold. Roll the kidneys in flour and brown quickly in four tablespoonfuls of fat. Add a bunch of soup herbs and four onions cut fine. Cook slowly until the kidneys are tender, then add one dozen small potatoes. When the potatoes are done, thicken the gravy with flour, season with salt, pepper and lemon juice or vinegar.

Tripe Milanaise.

Chop fine one carrot, an onion and a stalk of celery; fry these in a saucepan with two tablespoonfuls of fat; when nicely browned, add a bunch of herbs or a seasoning of mixed herbs and one and one-half pounds of tripe cut in pieces two inches long by an inch wide; season with salt and pepper. Cover with water and let it simmer for half an hour, stir occasionally and when boiling serve on a hot dish.

Tripe Italienn.

Proceed in the same manner as for Milanaise. Add two cupfuls of tomato puree and let simmer for half an hour then pour in half a pint of green peas, season with salt and pepper, simmer again for twenty minutes. Serve hot.

Queen of Puddings.

Cut bread into one-half pint of half-inch cubes; beat the yolks of three eggs, and add one white; add one-fourth of a cupful of sugar, one teaspoonful of vanilla; beat until well mixed; add one pint of milk; stir until the sugar is dissolved. Pour this custard over the bread and bake in a moderate oven until set. Remove from the oven and spread with a cupful of stewed apples. Make a meringue of

the remaining two egg whites; add two tablespoonfuls of sugar and bake until brown. Serve hot with or without cream. Any kind of preserves or jelly may be used in place of the apples.

Nellie Maxwell

(Copyright, 1920, Western Newspaper Union)

Memory in Writing.

Most of the too few painters I know talk easily enough, but when one of them is talking to another I notice how often he hesitates, not for a word, but for a memory. His eye is waiting until it sees with the needed degree of distinctness the color or form of the thing he is talking about. So a writer will often stop, hesitate,

CARDUI HELPED REGAIN STRENGTH

Alabama Lady Was Sick For Three Years, Suffering Pain, Nervous and Depressed—Read Her Own Story of Recovery.

Paint Rock, Ala.—Mrs. C. M. Stegall, of near here, recently related the following interesting account of her recovery: "I was in a weakened condition. I was sick three years in bed, suffering a great deal of pain, weak, nervous, depressed. I was so weak I couldn't walk across the floor; just had to lay and my little ones do the work. I was almost dead. I tried every thing I heard of, and a number of doctors. Still I didn't get any relief. I couldn't eat, and slept poorly. I believe if I hadn't heard of and taken Cardui I would have died. I bought six bottles, after a neighbor told me what it did for her.

"I began to eat and sleep, began to gain my strength and am now well and strong. I haven't had any trouble since. . . I can testify to the good that Cardui did me. I don't think there is a better tonic made and I believe it saved my life."

For over 40 years, thousands of women have used Cardui successfully, in the treatment of many womanly ailments.

If you suffer as these women did take Cardui. It may help you, too. At all druggists. E 85

100% PURE
GOOD TO THE LAST DROP
SEALED TINS ONLY AT YOUR GROCERS
MAXWELL HOUSE COFFEE

Firestone

Buy a set of Firestone 3½-inch tires and discover the big feature behind their uniform service—perfect *balance*.

Firestone has devoted eighteen years to developing the *balanced* tire, giving light car owners more mileage at low cost—most miles per dollar.

The answer to getting more service and more *uniform* service out of all four tires is the Firestone 3½. It is more than thickness of tread or amount of rubber and fabric, greater cushioning or greater air capacity. It is proper *balance*—the way each of these component parts of a Firestone 3½ tire is made to co-ordinate.

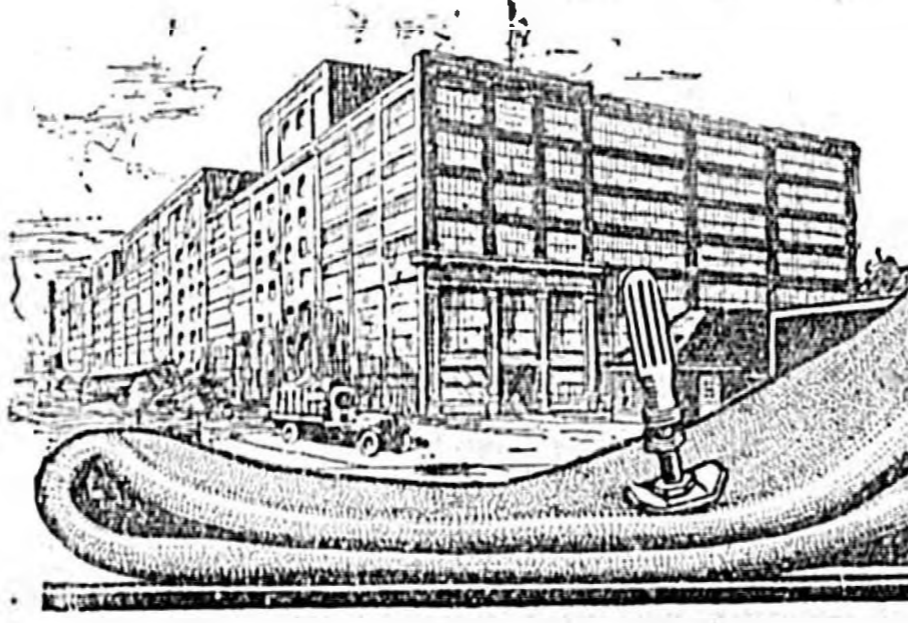
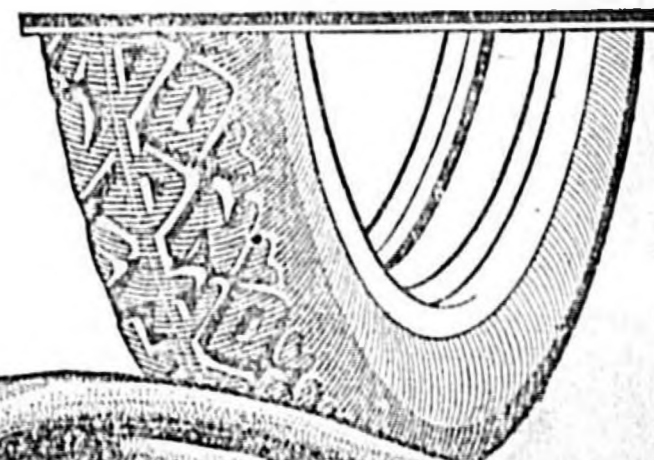
Sales of this tire increased 96% for the first six months of this year. The result justifies the effort because the stamp of approval has been set by the public on the Firestone 3½—the *balanced* tire.



30x3½
(non skid)

\$22.50

Gray Tube \$3.75
Red Tube \$4.50



Firestone
30 X 3½
TUBES

..BENJAMIN'S GREAT.. ALTERATION SALE

SALE STARTS
FRIDAY MORNING,
AUGUST 27

SALE ENDS
SATURDAY EVENING,
SEPTEMBER 4

Beginning in a few days we are going to make extensive alterations and improvements in our Store. In order to do this we must make room for the workmen by removing almost one-half of our stock. A new floor will be built in the store-room and a balcony will be placed in the rear in order to accomodate our increasing business.

ONLY A FEW OF THE MANY BARGAINS CAN BE MENTIONED IN THIS ADVERTISEMENT. COME IN EARLY AND GET YOUR CHOICE

Piece Goods By The	All-Wool Black or Blue SERGE, 22.50 to \$27.50 Value, SALE PRICE..... FRENCH SERGE, A \$1.98 VALUE, SALE PRICE.....	Ladies's Shoes	Boys Wear	BOYS' UNION SUITS, 98c VALUE, SALE PRICE ONLY..... BOYS' CAPS, A REAL \$1.00 VALUE, SALE PRICE ONLY.....	SPENDERS, A REAL 75c VALUE, SALE PRICE ONLY..... MENS' HATS, WILL WORTH \$2.00, SALE PRICE ONLY.....
MENS' TROUSERS, REGULAR PRICE 29c, SALE PRICE..... ENGLISH NAUNSOOK, REGULAR PRICE 25c, SALE PRICE..... INDIAN HEAD, REGULAR PRICE 49c, SALE PRICE..... DIMITY CHECKS, A 29c VALUE, SALE PRICE..... DIMITY CHECKS, A 45c VALUE, SALE PRICE..... DIMITY CHECKS, A 45c VALUE, SALE PRICE..... DIMITY CHECKS, A 45c VALUE, SALE PRICE..... AMOSKEAG APRON GINGHAM, 32 to 35c VALUE, SALE PRICE..... DRESS GINGHAMS, Fancy Plaids and STRIPES, WORTH to 45c, NOW..... BLUE BELLE CHAMBRAY SHIRTING in Stripes and Checks, Worth 39c to 45c, SALE PRICE..... 64IN. Pure White TABLE DAMASK in Fancy Flowered Patterns, Regular Price \$1.49, SALE PRICE..... KHAIRI CLOTH, REGULAR PRICE 65c, SALE PRICE..... MATTRESS TICKING, Good Quality, REGULAR PRICE 39c, SALE PRICE..... FEATHER TICKING, Best Grade, REGULAR PRICE 55c, SALE PRICE..... CURTAIN SCRIM, A 29c VALUE, SALE PRICE..... 28 IN. GOOD SHIRTING PERCAL, REGULAR PRICE 29c, SALE PRICE.....	RED SPREADS, Extra Large, Regular Price \$1.98, SALE PRICE..... LACE CURTAINS, White and Ecru, Regular Price \$2.49, SALE PRICE..... WINDOW SHADES, A 98c VALUE, SALE PRICE..... LADIES' SILK TAFFETA DRESSES, \$18.50 to \$35.00 Value, up from Value, SALE PRICE..... GEORGETTE AND CREPE DE CHENE SHIRT WAISTS, \$1 to \$5 Value, SALE PRICE..... LADIES' SHIRT WAISTS, in Cotton, Voile, Organdie, Linen and Chiffon, Regular Price, up to \$2.50, now 85c to Value, SALE PRICE..... LADIES' ALL-WOOL SERGE or POP-LIN DRESS SHIRTS, all New Styles, Good Values at 1-2 Price..... LADIES' AND MISSES' MIDDY BLOUSES, Regular Price \$1.98, Sale \$1.25 Value, SALE PRICE..... CHILDREN'S MIDDY BLOUSES, a \$1.75 Value, SALE PRICE..... LADIES' AND MISSES' MIDDY SUITS, \$5.98 VALUE, SALE PRICE..... CHILDREN'S MIDDY SUITS, Regular Price \$4.50, SALE PRICE..... CHILDREN'S GINGHAM DRESSES, SALE PRICE, UP FROM..... CHILDREN'S WHITE EMBROIDERED DRESSES, UP FROM..... CHILDREN'S UNDERSHIRTS AND NIGHT GOWNS SPECIALLY LOW PRICED IN THIS SALE.....	MISSES' and LADIES' MARY JANE PUMPS, \$1.00 Value, SALE PRICE..... LADIES' OXFORDS and PUMPS, French or Military Heels, \$6.75 to \$8.00 Value, SALE PRICE..... WHITE CANVAS PUMPS or OXFORDS, \$3.00 to \$3.98 Value, now.....	28 THIS SALE AT..... BOYS' BLUE CHAMBRAY SHIRTS, SALE PRICE ONLY..... BOYS' White POLKA DOT SHIRTS, SALE PRICE ONLY..... BOYS' WASH SUITS, up to \$3.50 Value, Sizes 3 to 8, SALE PRICE.....	65c 65c	50c \$2.49
				Men's Work Clothes	Shoes! Shoes!!
				MENS' WORK PANTS, Heavy Cottonade, \$2.25 Value, SALE PRICE..... MENS' PIN CHECKS, \$2.49 VALUE, SALE PRICE ONLY..... MENS' KHAIRI PANTS, \$2.65 Value, SALE PRICE ONLY..... MENS' MOLE SKIN-PANTS, a \$3.98 Value, SALE PRICE ONLY..... MENS' ALL-WOOL SERGE SUITS, IN BLUE AND BROWN, AT FAR BELOW MARKET PRICE..... MENS' Indigo Blue, Union Made, OVERALLS, Worth \$2.49, now..... Best Grade, Extra Well Made and Extra Good Material OVERALLS, worth \$3.00 to \$3.50, SALE PRICE ONLY..... Medium Grade OVERALLS, Regular \$2.69 Value, SALE PRICE..... BLUE CHAMBRAY WORK SHIRTS \$1.39 VALUE, SALE PRICE..... MENS' ATHLETIC UNDERSUITS, \$1.29 VALUE, SALE PRICE..... BALBRIGAN UNDERSHIRTS, Extra Good Value, SALE PRICE..... MENS' WORK SOX Go in this Sale at only..... MENS' SILK SOX, \$1.00 VALUE, SALE PRICE ONLY.....	MENS' WORK SHOES, \$3.98 Value, SALE PRICE ONLY..... MENS' DRESS SHOES, black or Tan \$6.50 VALUE, SALE PRICE..... MENS' DARK TAN SHOES, English or Round Toe, \$7.50 to \$10.75 value..... MENS' OXFORDS, Light or Dark Tan \$7.00 to \$9.00 Value, SALE PRICE..... MENS' HUNTING BOOTS, \$9.00 to \$12.50 Value, on Sale now at..... MENS' SUN HATS, 50c VALUE, SALE PRICE ONLY..... MENS' CANVAS LEGGINGS, \$1.49 VALUE, SALE PRICE..... MENS' HANDKERCHIEFS, SALE PRICE..... MENS' SUPPORTERS, SALE PRICE..... ARM BANDS, SALE PRICE..... MENS' AND BOYS' RUBBER OR LIGEN COLLARS, SALE PRICE..... SOFT COLLARS, SALE PRICE..... MENS' BELTS, 75c VALUE, SALE PRICE ONLY..... BIG BARGAINS IN BAGS, SUIT CASES AND TRUNKS.

OUR SUCCESS

is built Upon the Fact that Our Sales are Bona Fide Sales--All Goods being just as Advertised--and Satisfaction Guaranteed or Your Money returned. Benjamin Sales mean Real Sales and Real Values.

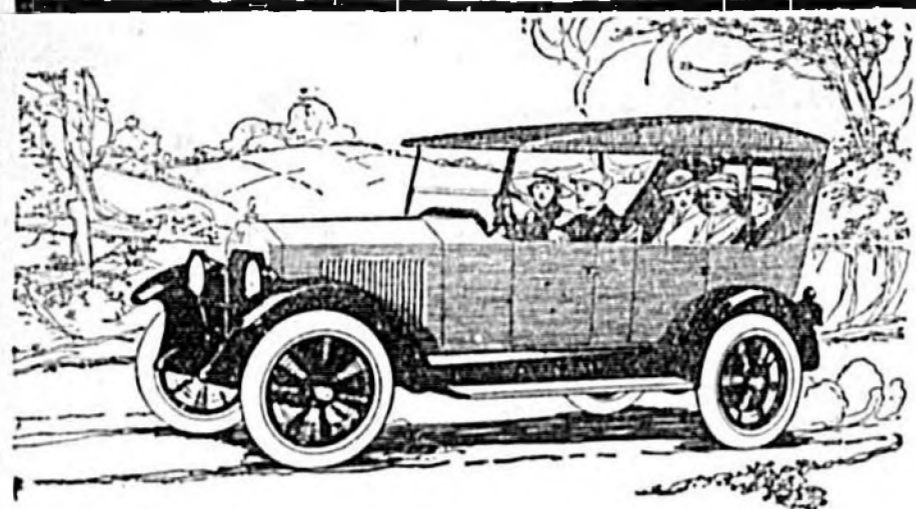
Our store is full to overflowing with stock. A large part of this stock must absolutely be sold within ten days in order to make these repairs. For this reason we are putting on this **BIG SALE**. Prices have been cut to cost and in many cases below cost to clear our shelves quickly.

S. BENJAMIN

Corner Palmetto Avenue and First Street
SANFORD, - - - FLORIDA

PAGE TWENTY THE SANFORD HERALD AUGUST 26, 1913 PAGE THIRTEEN

Vette Six



Model 6-48 \$2075.00 6-34 \$1750.00
DELIVERED

Practically the same Specifications as other cars selling at \$300.00 more money. Sold by a local dealer who has won the reputation of giving SERVICE to the entire satisfaction of every customer.

These prices are sure to go higher soon. Buy now while the Price is assured.

H. L. HAIGHT

Overland Sales & Service Company

Cor. Commercial and Park

Opposite Hotel Valdez

DIRTY BOWERY HEALTHY SPOT

Officials Unable to Explain it, but It's True.

PASSED UP BY FLU EPIDEMIC

When Other Sections of New York City Are Afflicted by Contagious Diseases the Bowery Always Seems to Escape—Cleanliness a Possessor Which is Held in No Great Respect by Denizens of Bowery.

The amazing statement is made by an inspector of the sanitary division of the New York health department that the Bowery, with all its

SEEDS

Plant Martin's Hy-Test Seed for good results. Garden and Field Seed for Fall Planting.

Seed Oats, Rye, Barley, Millet, New Crop Turnips, Cabbage, Egg-Plant, Pepper, Beans, Peas, Potatoes and Onion Sets.

Largest and Oldest established Seed house in the state.

Send For Fall Catalogue and Seed Special

E. A. MARTIN SEED CO.

Jacksonville Florida

and stew or beans—so that sometimes soap is sidetracked. Perhaps all their necks are not clean and their faces not polished up, or their bodies scrubbed as thoroughly as one might wish, still the dirtiest ones I have come across are the healthiest."

In spite of this discovery, the health department refuses to argue, as might be expected, that filth is conducive to health. Instead, it is putting forth laborious efforts to make the Bowery clean up. Inspector Davis, when not inspecting lodging houses for signs of dirt, spends his time addressing large audiences of the men who patronize them, explaining the necessity of sanitary precautions and asking for their co-operation. The men are usually willing enough to help, but the lodging house keepers are not quite so gracious.

"It was a Chinese joint that gave the first heed to our campaign for sanitation," says Inspector Davis. "Gee, what a dump it was! But the proprietor took my advice, and in a week's time all the old beds, sheets and dirty blankets were thrown out, and in their stead new bunks, new bedding and clean everything put in. The floors that were dirty now look white, and the spiderwebs (the Chinese proprietor called them 'whiskers') are gone.

Corner on Insect Market.

"At one lodging house the proprietor appears to have cornered the insect market. He has been given orders to get rid of his surplus stock. His point was, 'If the men don't kick, why should the health department?' But, says I, 'these men go to all parts of the city, and we do not want them to take with them excess baggage.'

Not all of the citizens of the Bowery are very poor, according to Inspector Davis. Many are employed in factories, warehouses, shipyards, and a large number of the younger men in offices, where they make fairly good salaries. They stick to the Bowery because living there is cheap, and then, they say, they are afraid to move to other parts of the city which "seem so unhealthy." Inspector Davis knows of hundreds of such men who are making at least \$10 a week, living on \$10, and putting \$30 a week away in the bank.

But to the casual explorer, walking down the Bowery in search of its peculiar healthful charm, there is certainly little to recommend it. At present, weeks after the great blizzard of the winter, the street, under the arch of the Third avenue elevated, is still covered with a thick, irregular carpet of grimy ice, broken in places by large ponds of black water, so that crossing the Bowery on foot is almost as impossible as crossing the Hudson or any other great river.

Stores Shabby, Dirty.

The numerous small stores which huddle against one another on each side of the street, are all in need of paint, to say nothing of soap and water. Above them are the dusty, silent windows of the lodgings of the poor, with fire escapes at frequent intervals, apparently not so much for use in case of fire as for supporting lines of wildly flapping, drying clothes.

Much of the business on the Bowery is transacted out of doors, hardware, second-hand furniture, second-hand clothing, nondescript wares and occasionally books in the last stages of dilapidation being exhibited on stalls outside the stores as a lure to the constant stream of poorly clothed humanity surging past their doors. Most of the women customers are be-shawled, sometimes the shawl being the bright vermilion worn by gypsy women, but the men's garb, such as it is, is second-hand American.

"The other day a middle-aged mar-

"Aunt Sally—she knew how all right"



WHEN I was small

I USED to watch.

AUNT SALLY.

PUT UP fruit.

AND VEGETABLES.

FOR THE winter.

I REMEMBER how.

SHE PACKED it all

IN CLEAN glass jars.

AND SEALED the tops.

WITH PARAFFIN.

TO KEEP out.

ALL THE air and keep.

THE JUICY flavor in.

AND ALL the winter.

THANKS TO her.

WE HAD the fruits.

OF SUMMER on our table.

SO WHEN I happened.

ON SOME cigarettes.

WRAPPED NEATLY up,

IN A glassine jacket.

I DIDN'T think.

IT WAS just for looks.

BUT RATHER that.

THE EXTRA wrapper.

KEPT AIR and dampness.

ALL OUTSIDE.

AND GOODNESS in.

SO THAT'S another.

BLAME GOOD reason why.

"THEY SATISFY."

QUITE right, that neat glassine jacket isn't just for looks. It protects your Chesterfields from the weather—seals in the flavor of those wonderful Turkish and Domestic tobaccos—keeps them in prime shape for smoking! Rain or shine, winter or summer, Chesterfields always "satisfy!"

Chesterfield

CIGARETTES

Liggett & Myers Tobacco Co.

NAUTILUS CASINO

SEABREEZE, FLORIDA

Finest Amusement Resort on the East Coast

DANCING

Thursday and Saturday Evenings

Music by Prof. Bushnell's Orchestra

SWIMMING POOLS

Open Daily

A Beautiful Place For Picnic Parties

FOR SALE CHEAP

15 Acre Farm, good location, 5 acres Tiled with flowing well, 3 acres with Tile in need of relaying, all fenced, no buildings.

PRICE AND TERMS ATTRACTIVE

J. E. SPURLING, Agt.

KEEP YOUR EYE ON THE HERALD WANT COLUMN

You Win!

In all games of endurance when your partner is an icy-cold bottle of

Chero-Cola

REFRESHING With no bad after effect

DRINK Chero-Cola THERE'S NONE SO GOOD

Community Co-operation
is essential to community prosperity. There must be **FRIENDSHIP** in our dealings.

All must work together in the spirit of **BROTHERHOOD**. Let us carry out this spirit and watch prosperity grow.

Modern banking is service in behalf of the community. Open a check account in this bank and give us the opportunity to serve you.

STRENGTH SERVICE
SEMINOLE COUNTY BANK
"HOME INSTITUTION"
WE PAY 4% ON SAVINGS

year to retire the preferred stock issued each year, and such sums shall be set aside for that purpose. The entire preferred stock shall have been retired.

That the said Two Thousand shares of common stock of said corporation, and the voting power of said corporation, and the holding of the preferred stock shall not be exercised by the same and the same shall be non-participating, except as hereinbefore stated, and the entire stock hereunder shall be non-assessable.

ARTICLE IV.
This corporation shall acquire and have full power to exercise its corporate rights and franchise perpetually, from and after the commencement of its corporate existence.

ARTICLE V.
The business of this corporation shall be conducted by a President, a Vice-President, a Secretary and Treasurer, who may be one and the same person, and a Board of Directors, the number of whom shall not be less than three nor more than five persons, all of whom must be stockholders of said corporation and entitled to vote on any matter. Any officer may hold one or more offices of said corporation at the same time, except those officers named in this article.

The Directors shall meet annually on the first Tuesday after the first Monday of each year, at its principal place of business at Sanford, Florida, and the officers of the corporation shall meet immediately thereafter after by the Board of Directors, and the Directors upon election shall immediately elect their successors. The first meeting of the stockholders shall be held on the first Tuesday after the first Monday of each year, at its principal place of business at Sanford, Florida, and the officers of the corporation shall meet immediately thereafter after by the Board of Directors, and the Directors upon election shall immediately elect their successors.

ARTICLE VI.
The highest amount of indebtedness of this corporation shall not at any time exceed Five Hundred Thousand Dollars (\$500,000).

ARTICLE VII.
The names and residences of the signatories, and the amount of the capital stock subscribed by each are as follows:

ARTICLE VIII.
The amount of the capital stock of this corporation shall be Two Hundred and Fifty Thousand Dollars (\$250,000), divided into Two Thousand and Five Hundred Shares (2,500) of the par value of One Hundred (\$100.00) each; of said capital stock of Two Hundred and Fifty Thousand Dollars (\$250,000.00) Two Hundred Thousand Dollars of said capital stock shall be common stock divided into Two Thousand shares of the par value of One Hundred Dollars each; and Fifty Thousand Dollars of said capital stock shall be preferred stock divided into Five Hundred shares of the par value of One Hundred Dollars each, which stock shall be issued only when paid for in full with lawful money of the United States of America, or all or any portion of the capital stock of this corporation may be payable in, issued or used for the purchase of property, either real or personal, or for the payment of labor or services, at a just and fair valuation thereof, to be determined by the Board of Directors.

ARTICLE IX.
That the said preferred stock shall entitle the holders to receive each and every year a fixed yearly dividend of Eight per cent until the same shall have been retired, such dividends to always be paid before the dividend on common stock shall be paid or made. The Board of Directors may sell and issue the preferred stock provided for in these articles of incorporation, and when so issued the Board of Directors shall determine that said preferred stock shall be redeemable and subject to call at any time after the corporation is duly organized and ready for business, at its par value of said stock with accrued interest of dividends on said stock. That said preferred stock may be liquidated at the option of the board of directors and the consent of the holders of said preferred stock, by converting the same into common stock of equal value. That in case of dissolution or liquidation the holders of said preferred stock shall be paid in full the value of said stock with accrued interest before the holders of any common stock shall be entitled to receive payments. That out of the net earnings of said corporation a certain sum to be fixed by the board of directors shall be set aside each and every

may concern, that on the 2nd day of October A. D. 1920, I shall apply to the Honorable E. F. Housholder, Judge of said Court, as Administrator of the estate of the Martha Herlierson, deceased, and that at the same time I will present my final accounts as Administrator of said estate, and ask for their approval.

Dated July 19th, A. D. 1920.
E. MAGNUSON,
Administrator.

NOTICE OF SPECIAL BOND ELECTION FOR SPECIAL TAX SCHOOL DISTRICT, NO. 5, (GENEVA), SEMINOLE COUNTY, FLORIDA.

Whereas a petition has been presented to the County Board of Public Instruction for Seminole County, Florida, signed by more than twenty-five per cent of the duly qualified electors residing within Special Tax School District No. 5, (Geneva), Seminole County, Florida, asking and petitioning the County Board of Public Instruction for Seminole County, Florida, to call and order an election to be held within said Special Tax School District No. 5, (Geneva), Seminole County, Florida, to determine whether or not there shall be issued by the said Special Tax School District No. 5, (Geneva), bonds in the sum of \$15,000.00, to be used for the purpose of acquiring, building, enlarging, furnishing or otherwise improving school buildings and school grounds, and for the exclusive use of the public free schools within said Special Tax School District No. 5, (Geneva), Seminole County, Florida, and that an election is hereby ordered to be held to determine whether or not there shall be issued by the said Special Tax School District No. 5, (Geneva), bonds in the sum of \$15,000.00, to be used for the purpose of acquiring, building, enlarging, furnishing or otherwise improving school buildings and school grounds, and for the exclusive use of the public free schools within said Special Tax School District No. 5, (Geneva), Seminole County, Florida, to be held on the 2nd day of August, A. D. 1920.

Whereas the County Board of Public Instruction for Seminole County, Florida, has examined said petition and has ascertained that more than twenty-five per cent of the duly qualified electors residing within said Special Tax School District No. 5, (Geneva), Seminole County, Florida, have signed said petition, and

Whereas the County Board of Public Instruction for Seminole County, Florida, has determined by resolution this day adopted that bonds in the sum of \$15,000.00 will be required for the purposes set forth in said petition and which are enumerated hereinafter, said bonds to bear interest at the rate of six (6) per cent per annum, interest payable semi-annually, bonds to be dated January 1st, 1921, and the principal of said bonds to become due and payable thirty years after the date thereof.

Now, therefore, in pursuance of Chapter 6322, Laws of Florida, Acts of 1919, and in pursuance of a resolution of the Board this day adopted, notice is hereby given on the 6th day of September, A. D. 1920, an election will be held in said Special Tax School District No. 5, Seminole County, Florida, to determine whether or not there shall be issued by the said Special Tax School District No. 5, Seminole County, Florida, bonds in the sum of \$15,000.00, to bear interest at the rate of six (6) per cent per annum, interest payable semi-annually, bonds to be dated January 1st, 1921, the principal of said bonds to become due and payable thirty years after the date thereof, as is provided for in that certain resolution this day adopted by the County Board of Public Instruction, for Seminole County, Florida, in which election only those duly qualified electors who are freeholders, residing within the said Special Tax School District, shall be entitled to vote.

The said election so ordered to be held shall be at the several polling places within said Special Tax School District No. 5, Seminole County, Florida, where the last general election was held, throughout said district, to-wit: At Precinct No. 6 and the said election shall be held in compliance with Chapter 6342, Laws of Florida, Acts of 1919, and the inspectors and clerks of the several polling places shall make prompt returns to the County Board of Public Instruction for Seminole County, Florida, immediately after said election and the tabulation of the vote polled, and the County Board of Public Instruction for Seminole County, Florida, will be in session at 10 o'clock a. m. the 7th day of September, 1920, to receive the returns of said election and to determine and certify the result thereof.

The following named are hereby appointed and designated as clerks and inspectors to hold and conduct said election at the several polls or precincts named:

Precinct No. 6—G. W. F. Kille, E. Curlett, A. A. Moran, Inspectors; L. N. Rehbinder, Clerk.

All to which is done and ordered by the County Board of Public Instruction for Seminole County, Florida, in regular session assembled, the 2nd day of August, A. D. 1920.

(Seal of Board.)
C. F. Harrison, Chairman,
F. F. Patton, Member,
C. A. Dallas, Member,
County Board of Public Instruction for Seminole County, Florida.
Attest: T. W. Lawton, Superintendent of Public Instruction and Ex-Officio Secretary for Board.
Scheille Maines, Attorney for Board. 51-51c

NOTICE OF ELECTION.
WHEREAS, The Legislature of 1919, under the constitution of 1885, of the State of Florida, did pass one Joint Resolution proposing an amendment to the Constitution of the State of Florida, and the same was agreed to by a vote of three-fifths of all the members elected to each house; that the vote on said Joint Resolution were entered upon their respective Journals, with the yeas and nays thereon, and they did determine and direct that the said Joint Resolution be submitted to the electors of the State at the General Election in November, 1920.

Now, therefore, I, H. Clay Crawford, Secretary of State of the State of Florida, do hereby give notice that a

GENERAL ELECTION
will be held in each county in Florida on Tuesday next succeeding the first Monday in November, A. D. 1920, the said Tuesday being the

SECOND DAY OF NOVEMBER,

for the ratification or rejection of the said Joint Resolution proposing an amendment to the Constitution of the State of Florida, viz: A Joint Resolution proposing an Amendment to Section 6 of Article IX of the Constitution of the State of Florida Relating to Taxation and Finance.

Be It Resolved by the Legislature of the State of Florida: That the following amendment to Section 6 of Article 9 of the Constitution of the State of Florida relating to taxation and finance is hereby agreed to and shall be submitted to the electors of the state for adoption or rejection at the next general election held hereafter, that is to say that Section 6 of Article 9 of the Constitution of the State of Florida be amended so as to read as follows:

Section 6. The Legislature shall have power to provide for issuing State bonds only for the purpose of repelling invasion or suppressing insurrection, or for the purpose of redeeming or refunding bonds already issued at a lower rate of interest, or for the purpose of acquiring, building or maintaining a system of good roads and bridges throughout this State under such regulations as may be prescribed by An Act of

the Legislature; provided, that any bond issues authorized in pursuance thereof for a system of good roads shall not exceed in amount five (5) per cent of the total tax assessment of the State at the time of issue.

The voters cast in compliance with said proposed amendment and the canvass, declaration and returns thereof, shall be subjected to the same regulations and restrictions as are provided by law for general elections in the State of Florida.

In testimony whereof, I have hereunto set my hand and affixed the Great Seal of the State of Florida, at Tallahassee, the Capital, this the twenty-eighth day of July, A. D. 1920.

(SEAL)
H. CLAY CRAWFORD,
Secretary of State.

Resolution County Board of Public Instruction, Seminole County, Florida, Determining What Amount of Bonds Necessary for Special Tax School District No. 5, Geneva, Seminole County, Florida, the Rate of Interest to be Paid Thereon and the Time when Principal and Interest Shall be Due and Payable.

Whereas, On the 6th day of July, A. D. 1920, a petition was presented to the County Board of Public Instruction for Seminole County, Florida, signed by more than twenty-five per cent of the duly qualified electors residing within Special Tax School District No. 5, Geneva, Seminole County, Florida, asking that an election be called and held to determine the question as to whether or not bonds in the sum of \$15,000.00 should be issued by Special Tax School District No. 5, Seminole County, Florida, for the purpose of acquiring, building, enlarging, furnishing or otherwise improving school buildings and school grounds and for the exclusive use of the public free schools within Special Tax School District No. 5.

Whereas, It is the sense of this Board that it would be in the best interest of Special Tax School District No. 5, Geneva, Seminole County, Florida, to issue bonds in the sum of \$15,000.00, the proceeds thereof to be used and expended in the manner and for the purposes and objects as are hereinafter set forth and as stated in said petition.

Therefore, Be It Resolved: That it is the determination of this County Board of Public Instruction for Seminole County, Florida, that the amount of the bonds required for the purposes and objects set forth in said petition be the sum of \$15,000.00; that the said bonds shall bear interest at the rate of 6 per cent, (six per cent) per annum; the interest of said bonds to be paid semi-annually; said bonds to be dated January 1st, 1921, and to mature thirty years after date thereof, and

Therefore, Be It Resolved: That a special election be held in said Special Tax School District No. 5, Seminole County, Florida, in accordance with Chapter 6342, Laws of Florida, Acts of 1919, as amended, to determine whether or not there shall be issued by said Special Tax School District No. 5, Seminole County, Florida, bonds, as are provided for in this resolution and

Be It Further Resolved: That this resolution be published in The Sanford Herald, a newspaper published in Seminole County, Florida, (there being no newspaper published in said Special Tax School District No. 5) once a week for four successive weeks.

This resolution adopted in regular session of the County Board of Public Instruction for Seminole County, Florida, the 2nd day of August, A. D. 1920.

C. F. Harrison, Chairman,
F. F. Patton, Member,
C. A. Dallas, Member,
County Board of Public Instruction for Seminole County, Florida.
Attest: T. W. Lawton, Superintendent of Public Instruction and Ex-Officio Secretary for Board.
Scheille Maines, Attorney for Board. 51-51c

Automobile Protection
FIRE and THEFT and COLLISION Insurance issued by the FLORIDA STATE AUTOMOBILE ASSOCIATION is the safest and cheapest in the world. Write for information to headquarters Orlando Agents wanted in every town in Florida

HENRY McLAULIN
JEWELER
MY SPECIALTIES:
PICKARD'S HAND-PAINTED CHINA
GORHAM'S STERLING SILVER
ROGERS' PLATED WARE
ELGIN AND WALTHAM WATCHES

GEO. G. HERRING
Attorney-at-Law
No. 14 Garner-Woodruff Building
SANFORD, FLA.

LANDIS, FISH & HULL
ATTORNEYS AND COUNSELLORS AT LAW
DE LAND, FLA.
Will practice in the State and Federal Courts Special facilities for Examining and Perfecting Land Titles

IDEAL FERTILIZERS
Wide range of materials and analyses. All formulas properly proportioned.
For **SEED BEDS and YOUNG PLANTS:**
Florideal Special (5-8-2)
For **GENERAL GARDEN VEGETABLES:**
Manatee Trucker (4-6-3)
Seminole Vegetable Grower (4-7-5)
Seminole Trucker (5-6-3)

Our Catalogue describes many other brands. Send for our Free Books and Price List.
Full stock Fall Fruit, Insecticides, etc., on hand at our Branch Warehouse
Mr. R. C. MAXWELL, Mgr.

WILSON & TOOMER
FERTILIZER COMPANY
Agricultural Building Jacksonville, Fla.

lished at Sanford, (there being no newspaper published within said Special Tax School District No. 5) Seminole County, once each week for four successive weeks.

None and ordered in regular session of the County Board of Public Instruction for Seminole County, Florida, this 2nd day of August, A. D. 1920.

(Seal of Board.)
C. F. Harrison, Chairman,
F. F. Patton, Member,
C. A. Dallas, Member,
County Board of Public Instruction for Seminole County, Florida.
Attest: T. W. Lawton, Superintendent of Public Instruction and Ex-Officio Secretary for Board.
Scheille Maines, Attorney for Board. 51-51c

IN CIRCUIT COURT, SEVENTH JUDICIAL CIRCUIT, SEMINOLE COUNTY, FLORIDA, IN CHANCERY
E. Mable Sator, Complainant,
vs.
G. W. Steiff, and Emma A. Steiff, J. D. Walverton, L. O. Porter, and Arthur F. Ollin, Defendants.

It is hereby ordered that you, G. W. Steiff, Emma A. Steiff, J. D. Walverton, L. O. Porter and Arthur F. Ollin, do be and appear to the bill of complaint filed herein against you on the 4th day of October, 1920, and it is further ordered that The Sanford Herald, the newspaper in which this notice shall appear for eight consecutive weeks.

Witness my hand and official seal of the Court this 26th day of August, 1920.

(SEAL)
E. A. DOUGLASS,
Clerk Circuit Court, Seventh Judicial Circuit, Seminole County, Florida.
Scheille Maines, Solicitor for Complainant. 51-51c

In The Court of the County Judge
Seminole County, State of Florida.
In re Estate of
J. Hamilton Rep.
To all Creditors, Legatees, Distributors and all Persons having Claims or Demand against said Estate:

You, and each of you, are hereby notified and required to present any claims and demands which you, or either of you, may have against the estate of J. Hamilton Rep deceased, late of Seminole County, Florida, to the undersigned administrator of said estate, within two years from the date hereof.

Dated July 22nd, 1920, A. D.
AARON R. ANDERS
Administrator Estate of J. Hamilton Rep.

BUSINESS CARDS
One Inch Cards Will Be Published Under This Heading At The Rate Of \$7.25 Per Year.

SCHELLE MAINES
LAWYER
OFFICE IN THE COURT HOUSE
SANFORD - FLORIDA

Automobile Protection
FIRE and THEFT and COLLISION Insurance issued by the FLORIDA STATE AUTOMOBILE ASSOCIATION is the safest and cheapest in the world. Write for information to headquarters Orlando Agents wanted in every town in Florida

HENRY McLAULIN
JEWELER
MY SPECIALTIES:
PICKARD'S HAND-PAINTED CHINA
GORHAM'S STERLING SILVER
ROGERS' PLATED WARE
ELGIN AND WALTHAM WATCHES

GEO. G. HERRING
Attorney-at-Law
No. 14 Garner-Woodruff Building
SANFORD, FLA.

LANDIS, FISH & HULL
ATTORNEYS AND COUNSELLORS AT LAW
DE LAND, FLA.
Will practice in the State and Federal Courts Special facilities for Examining and Perfecting Land Titles

IDEAL FERTILIZERS
Wide range of materials and analyses. All formulas properly proportioned.
For **SEED BEDS and YOUNG PLANTS:**
Florideal Special (5-8-2)
For **GENERAL GARDEN VEGETABLES:**
Manatee Trucker (4-6-3)
Seminole Vegetable Grower (4-7-5)
Seminole Trucker (5-6-3)

Our Catalogue describes many other brands. Send for our Free Books and Price List.
Full stock Fall Fruit, Insecticides, etc., on hand at our Branch Warehouse
Mr. R. C. MAXWELL, Mgr.

WILSON & TOOMER
FERTILIZER COMPANY
Agricultural Building Jacksonville, Fla.

LEGAL ADVERTISING

County Judge Seminole
County State of Florida.
In re Estate of
Alexander K. Powers
vs. All Creditors, Legatees, Distributors and all Persons having Claims or Demands against said Estate.
You, and each of you, are hereby notified and required to present any claims and demands which you, or either of you, may have against the estate of Alexander K. Powers deceased, late of Seminole County, Florida, to the undersigned Administrator of said estate, within two years from the date hereof.

Dated July 19th, A. D. 1920.
A. D. ZACHARY,
Administrator.

Notice of incorporation
Notice is hereby given that the undersigned will on the 1st day of August, A. D. 1920, or as soon thereafter as convenient, apply to the Honorable Sidney J. Catts, Governor of the State of Florida, for Letters Patent Incorporating, "JOHN RUSSELL COMPANY", under the following proposed charter, the original of which is on file in the office of the Secretary of the State of Florida, at Tallahassee, Florida.

JOHN RUSSELL,
H. T. RUSSELL,
F. W. TALBOTT.

Articles of Incorporation of John Russell Company
We the undersigned have agreed to associate ourselves and do hereby become associated, for the purpose of forming a body politic and corporate under and by virtue of the Laws of the State of Florida, and do hereby adopt the following Articles of Incorporation.

ARTICLE I.
The name of the corporation shall be "JOHN RUSSELL COMPANY" and its principal office and place of business shall be at Sanford, Seminole County, Florida, but it may have and establish such other offices and places of business at such places as the Board of Directors may from time to time determine.

ARTICLE II.
The general nature of the business to be transacted and conducted by said corporation shall be as follows, to-wit:
To carry on the business of a commission merchant, broker, factor, and agent; to purchase, buy, sell, and dispose of any and all kinds of fruits and vegetables, and any and all kinds of produce of whatsoever nature and kind, on a commission basis or otherwise; to make advances and loans to farmers on their crops or contemplated crops; to sell, acquire and dispose of real estate and personal property; to borrow money; to issue bonds and secure the same by deeds of trust or mortgages; to buy, lease, acquire real estate and clear, develop, lay out the same into farms and to cultivate the same to produce, fruits, or other products of the soil; to manufacture, buy, sell or otherwise deal in fertilizers, fertilizer materials, in-

secticides or spraying materials, and all kinds of farm machinery, tools and supplies to manufacture, purchase, sell, and otherwise deal in all kinds of lumber, saw material, crates, barrel materials and building materials, bleaching papers, and any and every thing used in connection with or pertaining to the operation of farms, the harvesting of crops and the shipment and sale of the same; to hold, by purchase or otherwise stock in other corporations, and the power of the disposal thereof; to deal in stocks and bonds; to invest and to borrow money and to secure the same by a pledge of its stock, or by the execution of its notes, bonds, or mortgages, or other obligations upon the property of the corporation; and generally to have and exercise all such powers as may be incident to the purpose and business of the corporation, or other business of a like nature, and to have, enjoy, and exercise all the rights, powers, and privileges incident to corporations organized and existing under and by virtue of the laws of the State of Florida.

ARTICLE III.
The amount of the capital stock of this corporation shall be Two Hundred and Fifty Thousand Dollars (\$250,000), divided into Two Thousand and Five Hundred Shares (2,500) of the par value of One Hundred (\$100.00) each; of said capital stock of Two Hundred and Fifty Thousand Dollars (\$250,000.00) Two Hundred Thousand Dollars of said capital stock shall be common stock divided into Two Thousand shares of the par value of One Hundred Dollars each; and Fifty Thousand Dollars of said capital stock shall be preferred stock divided into Five Hundred shares of the par value of One Hundred Dollars each, which stock shall be issued only when paid for in full with lawful money of the United States of America, or all or any portion of the capital stock of this corporation may be payable in, issued or used for the purchase of property, either real or personal, or for the payment of labor or services, at a just and fair valuation thereof, to be determined by the Board of Directors.

That the said preferred stock shall entitle the holders to receive each and every year a fixed yearly dividend of Eight per cent until the same shall have been retired, such dividends to always be paid before the dividend on common stock shall be paid or made. The Board of Directors may sell and issue the preferred stock provided for in these articles of incorporation, and when so issued the Board of Directors shall determine that said preferred stock shall be redeemable and subject to call at any time after the corporation is duly organized and ready for business, at its par value of said stock with accrued interest of dividends on said stock. That said preferred stock may be liquidated at the option of the board of directors and the consent of the holders of said preferred stock, by converting the same into common stock of equal value. That in case of dissolution or liquidation the holders of said preferred stock shall be paid in full the value of said stock with accrued interest before the holders of any common stock shall be entitled to receive payments. That out of the net earnings of said corporation a certain sum to be fixed by the board of directors shall be set aside each and every

More than just materials
When you let us supply your building needs you get a great deal more than just so many feet of lumber—bundles of shingles—pounds of nails—or panels of Beaver Board.

You get the benefit of our building material knowledge and experience in Service that helps you get the results you want at the right price. Service first in planning the work—more service in selecting proper materials—speedy service in delivering the goods.

Notice of Publication
United States Land Office,
Gainesville, Florida, July 12, 1920
Notice is hereby given that R. F. Hampton State Selecting Agent for School Lands for the State of Florida, at Sanford, Florida, has filed in this office his application to select, under the provisions of the Act of Congress approved February 25, 1919, the following:

North-east quarter of south-east quarter (NE 1/4 of SE 1/4) of Section Thirty-one (31) Township Nineteen (19) North, Range Thirty-one (31) East, Tall Merd.

Any and all persons claiming adversely the lands described, or desiring to object because of the mineral character of the land, or for any other reason, to the disposal of applicant, should file their affidavits of protest in this office, on or before the 11th day of September, 1920.

ROBT. W. DAVIS,
Register.
48-51c
In Court of County Judge Seminole County State of Florida.
In re Estate of
William C. Stenstrom

Notice is hereby given to all whom it may concern, that on the 18th day of September A. D. 1920, I shall apply to the Honorable E. F. Housholder, Judge of said Court, as Judge of Probate, for my final discharge as Administrator of the estate of the late W. C. Stenstrom, deceased, and that at that time I will present my final accounts as Administrator of said estate, and ask for their approval.

Dated July 8th, A. D. 1920.
LEOLA NIXON,
Administratrix.
47-91c
In Court of County Judge Seminole County State of Florida.
In re Estate of
Iver V. Stenstrom

Notice is hereby given, to all whom it may concern, that on the 2nd day of October A. D. 1920, I shall apply to the Honorable E. F. Housholder, Judge of said Court, as Judge of Probate, for my final discharge as Administrator of the estate of the late Iver V. Stenstrom, deceased, and that at that time I will present to said Court my final accounts as Administrator of said estate, and ask for their approval.

Dated July 29th, A. D. 1920.
ROSA L. STENSTROM HUMPHREY,
Administratrix.
50-101c
In Court of County Judge Seminole County State of Florida.
In re Estate of
Martha Herlierson

Notice is hereby given, to all whom it

may concern, that on the 2nd day of October A. D. 1920, I shall apply to the Honorable E. F. Housholder, Judge of said Court, as Administrator of the estate of the Martha Herlierson, deceased, and that at the same time I will present my final accounts as Administrator of said estate, and ask for their approval.

Dated July 19th, A. D. 1920.
E. MAGNUSON,
Administrator.

Sanford Novelty Works
517 Commercial Street