

# PHILLIPS FIRSTS

Since September, 1949

we have built homes for 1600 people

## FIRST

- to sell moderately-priced and well-financed homes with **LOW DOWN PAYMENTS**
- to mass-produce homes with real individuality of design
- to provide more than minimum equipment, such as water heater, space heater, range, refrigerator, venetian blinds
- to equip a home with Disposall, Washing machine, Dish washer
- to put into moderately-priced homes extras usually associated with much higher priced homes, such as Colored bathroom fixtures, Colored kitchen equipment

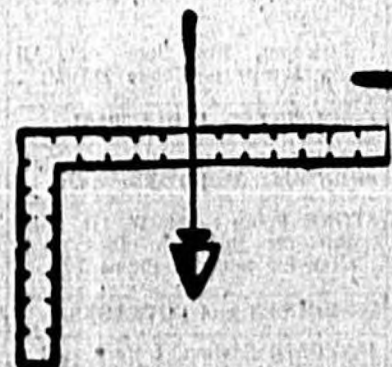
## NOW Phillips Announces Another FIRST:

Phillips' Developments  
in the Sanford area:

Little Venice  
Loch Arbor (Crystal Lake Section)  
Dreamwold  
Pinehurst  
Buena Vista  
Wynnewood  
San Lanta  
Sanfo Park  
Phillips Terrace  
Franklin Terrace  
Highland Park  
Frank L. Woodruff  
Subdivision  
Magnolia Heights

In addition to the homes we are now building in Sanford

1. **Your own home plan on your own lot**
2. **Our home plan on your lot**
3. **Your home plan on one of our lots**



Wellborn C. Phillips Jr.

Since 1949 Sanford's Leading Builder

Little Venice

PHONE 1504



Shop and Save In Sanford

The Sanford Herald

Weather: Cloudy with showers today, cooler with high of 70-75, clearing and cooler tonight, low 65-70, Saturday fair and mild.

VOLUME XLVIII Established 1904 SANFORD, FLORIDA FRIDAY, MARCH 26, 1954 Associated Press Licensed Wire No. 68

Answers Varied On Annexation

Little opposition was shown yesterday between candidates for the House of Representatives as they spoke at the noon luncheon meeting of the Seminole County Junior Chamber of Commerce.

And to direct questions for "yes" or "no" answers, long explanations were made by the candidates on the question of annexation in the City of Sanford's expansion program.

Political Rallies Kickoff Tuesday At Court House

The Seminole County Democratic Executive Committee's slate of political rallies to be held throughout the county will get off in a start Tuesday night, April 3, at the Seminole County Court House with the entire slate of candidates, with opposition, expected to voice their platforms.

The speaking will get underway at 8 o'clock, according to Robert Billheimer, secretary of the Seminole County Democratic Executive Committee, with each speaker allotted five minutes to speak.

One of the largest crowds ever to attend a Democratic Rally is expected to attend the kickoff affair of the series which will take the speakers throughout the county into every district and to practically every precinct.

There are 26 local candidates who will be in the House of Representatives, and 14 candidates for the Senate. However, said Billheimer, the local candidates will be given preference and will speak first.

Following the Sanford Rally, which is the first of the 1954 Democratic Rallies to be held in Seminole County, the speakers will voice their platforms at Lake Mary, Lake Monroe, Longwood, Bear Lake, Altamonte Springs, Paola, Fern Park, Oviedo, Geneva, and again in Sanford.

For Progress Dial Sanford Is Subject Of Rotary Speaker

"For Progress, Dial Sanford" is the intriguing title of a talk to be given before the Rotary Club of Sanford at its regular weekly meeting next Monday noon at the Yacht Club, by Gordon Rothemel, group manager for the Southern Bell Telephone and Telegraph Company, supervising the exchanges at Pearson, DeLand, Sanford, Oviedo and Geneva.

Rothemel is well qualified to discuss his subject for he has been with Southern Bell since 1919, with the exception of the time spent in the U.S. Field Artillery in the European Theatre during World War II. He is expected to show the growth of telephone service in Sanford, plans for expansion here and just what will happen when dial service is cut in.



CANDIDATES FOR THE HOUSE of Representatives ready to speak at yesterday's Jaycee luncheon meeting. They are, (left to right) Gordon Frederick, Thomas Stringer, Wilson Alexander, and Don Bates. (Staff Photo)

Concert Association Offers Music Lovers Treat Next Year

Music lovers are in for a real treat next year when the Seminole Mutual Concert Association presents its 1954-57 offerings, said Francis Roumillat, president of the local organization.

Present members have an opportunity to renew their memberships until Monday, Roumillat said, when memberships will be thrown open to the general public.

"We are going to begin our annual membership drive beginning next Monday," said Roumillat.

According to the Seminole Mutual Concert Association president, the 1954-57 season will include either "Charley's Aunt" or "Henry the Fourth" by Players Incorporated. This organization, with a cast of 14, has fired the vast theatrical circuit of this country with vitality and excitement.

The Festival Symphonette, directed by Robert Rudie, is another of the selections slated to be heard in Sanford next season. The unique musical organization is composed of some of the finest instrumentalists from the NBC Symphony, the New York Philharmonic Symphony and the Metropolitan Opera and features Elizabeth Winslow, lyric soprano, Howard Shaw, baritone, and Cynthia Oils, harpist.

The Chanticleers, a male quartet, is also included on the 1954-57 Sanford concert series. The distinction of this famous quartet lies in the sterling vocal and musical quality of the four singers, their remarkable variety of mood and material and the skillfully wrought arrangements.

The Seminole Mutual Concert Association's 1954-57 series will boast of four presentations. However, one of them is yet to be selected.

Present members of the association are urged to renew their memberships immediately before the annual membership drive gets underway Monday.

City, County Picture Of Continual Growth

Sanford and Seminole County weren't conceded much of a chance several years ago to become one of the leading areas in Florida's phenomenal growth.

But young, aggressive businessmen and political leaders, filled with the virus of expansion and better government, sunk their roots of leadership into the City and County to start the remarkable development which has outstretched Sanford as well as its nearby neighbors in every direction.

This does not mean one man did it all, by himself or even mostly by himself. Many people, literally hundreds, played a vital part in the planning, the ideas, the legislative battles, the follow-through and public support.

It was the cooperative spirit which enveloped the City and County to the surprise of many who thought and felt that such a growth, such cooperation, the aggressive spirit, would never be accomplished.

In less than a decade Sanford has done an about face. Spurred into action by the return to Sanford of the Naval Auxiliary Air Station and coupled with the attractiveness of Sanford and Seminole County's ideal location, everything began to move forward.

City streets, usually bare in the summer months when agriculture was at a standstill, began to fill with shoppers. The parking problem began to be a problem. Store owners began a program of redecoration with First Street taking on a carnival atmosphere. Neon signs, once few and far between, added color and pageantry to a once slow-moving, quiet community.

And yet, Sanford and Seminole County's growth is in its infancy.

A mere few years ago prospective home owners sought building lots in wooded areas within the city limits. Today, these areas have become grown up parts of the city. Wherever vacant property existed, soon appeared a housing development until Sanford began to burst at its seams.

Today, shopping centers exist in several outlying sections. Home developments have continued to expand and hundreds of homes have been added to the immediate perimeter with hundreds more already planned and in the process of construction.

Industry has moved in with three factories manufacturing clothing of various types employing one of the largest single groups of trained workers in the area. Boat builders came in and established themselves. A steel fabrication plant watched the unusual growth and settled here to grow with the community and with Florida.

Other small industries began to flourish with many more eyeing the community for future location. The City of Sanford, realizing the tremendous growth that had started "barrel-rolling tactics," began to look into the facilities which served its citizens.

Today, an expanded water system takes care of the increased load of furnishing pure water, a new and modern sewage system was developed which cleaned up the five-mile wide lake which borders the northern city and county limits. A new baseball stadium, municipal swimming pool, reurfaced streets, expanded recreational facilities to take care of young and old alike, a new land-fill project, all aided in the economic and phenomenal growth of the community. In addition, a million and a quarter dollar hospital has been opened to take care of the medical needs of the area.

Southern Bell Telephone and Telegraph Company is in the process of building a giant new location for its telephone facilities which will be turned to dial in the near future. A million dollars is being invested in this expansion alone. Agriculture began to modernize with field packing machines taking care of the bigger demands. In turn the Sanford State Farmers Market began to have historical years, from which greater and greater volumes of vegetables and produce as well as fruits began to move.

Highway Planning Group To Discuss Proposed Route

Divisions Asked To Turn In Funds, Lists By Monday

Present reports from the Seminole County American Red Cross Fund campaign show that only \$2,371 has been raised toward their goal of \$8,070. The only two divisions reporting, and reaching their assigned quotas are the Sanford Residential Division which reported \$1,323 and the Altamonte Springs Division which reported \$500.

The Reverend Milton H. Wyatt, chairman of the Board, has requested that all divisions participating in the campaign turn in whatever funds have been collected, along with their contributors lists by Monday, April 2.

It is planned, said the Rev. Wyatt that an analysis be made at that time to determine the exact status of their drive. All workers are urged to make their turn-ins before Monday night, Rev. Wyatt said.

If anyone having funds which they have collected is unable to deliver them to the Red Cross Office personally, the Board Chairman said yesterday, it is requested that they contact Mrs. Knox at phone No. 80, Sanford, so that arrangements can be made to have them picked up.

Funeral Services Tomorrow Morning For W. W. Warner

Wurt W. Warner, 66, died at Seminole Memorial Hospital at 12 noon yesterday following a lingering illness.

Mr. Warner was born July 2, 1889 in Painesville, Ohio. He was the son of Mr. and Mrs. P. G. I. Warner and nephew of the late A. D. Warner of Orlando. Mr. Warner moved to Orlando with his family in 1923 from Norwalk, O.

Later moving in Sanford he leased the Valdez Hotel for 10 years. He also operated the Marian and James hotel in Palatka and the Cherokee Hotel in Tallahassee. For the last 20 years Mr. Warner had operated a summer hotel and park on the banks of Lake Erie at Ashitaba, O. where he provided pleasure for thousands of children and was professionally known as "Pop Warner."

He was a member of St. Luke's Cathedral, Orlando but since living in Sanford, a member of the Holy Cross Episcopal Church. Mr. Warner had lived in Sanford for 33 years and his residence was 222 West 19th St.

He was a member of Tampa Consistory, Ancient and Accepted Scottish Rite of Tampa, a Noble of Bahia Temple, Orlando, a member of Mount Vernon Lodge No. 46, Norwalk, O., a member of BPOE No. 1241, Sanford and of Seminole Chapter No. 2, Order of Eastern Star.

Mr. Warner is survived by his widow, Mrs. Mamie J. Warner, Sanford; two sons, Ralph Wurt Warner, Tampa, and Franz W. Warner of Painesville, O.; three grandchildren, Mildred Sue and Franz Warner of Miami and Linda Ann Warner of Painesville, O.; a brother, C. M. Warner of St. Petersburg; and an aunt, Mrs. Lena Warner of Orlando.

Funeral services for Mr. Warner will be held tomorrow morning at 10 o'clock at Brian Funeral Home with the Rev. H. L. Zimmerman officiating.

Remains will be taken to Painesville, O. tomorrow afternoon for funeral and interment. The family requests that flowers be omitted.

Adjourned Meeting Of City Board Set

An adjourned meeting of the Board of Sanford City Commissioners and a public hearing on the rezoning of French Avenue from 18th to 25th Streets originally scheduled for 8 o'clock last night was adjourned until 1:30 this afternoon.

Meeting Scheduled April 4

A meeting of the Long Range Highway Planning committee has been called for Wednesday night at 7:30 at Today's Restaurant by its chairman, J. Bralley Odham.

The meeting has been called primarily to discuss the recent proposal made by City Commissioner John Krider to extend the route of 17-92 from the foot of the French Avenue Throughway on Lake Monroe directly across the lake to join a Volusia county road at Enterprise and Delary and then to join the present 17-92 two miles south of Orange City.

The proposal to span the four-mile width of Lake Monroe with a causeway and two bridge spans has met with continuing approval of businessmen and residences on both sides of the lake.

Bralley Odham, contacted yesterday in Jacksonville, said "I'm for giving the proposal a thorough study."

Harry Edwards, a realtor in Orange City said yesterday, "We haven't had too much time to get our thoughts together on the proposal. However, I'm sure we would be in favor of the new route in preference to a highway that would bypass all of us."

Officials in DeBary, by which the new route would pass, hesped approval on the new proposal by saying it is the "best news yet."

Everett L. Swift, Secretary of the DeBary Chamber of Commerce had this to say, "Think of the bottleneck in our midtown congestion it will relieve." To have trucks and through traffic routed away from the village's main street would tend to make DeBary a safer residence in every way, he said.

Dr. Abraham L. Lincoln, president of DeBary's Chamber of Commerce said, "It would be a great boon; we want DeBary as a residential district; this would enhance its value enormously."

Odham, in calling the meeting of the Long Range Highway Planning committee said that other matters of importance will also be discussed at the Wednesday night upper meeting. "We will discuss the City of Sanford's request to widen Park Avenue from 23rd Street to the intersection and the road from Sanford Avenue to 17-92 from the Naval Air Station, as well as other road matters of importance," said Odham.

Lutheran Sunday School Plans Egg Hunt For Children

Children of the Lutheran Church of the Redeemer will take part in their annual Easter Egg Hunt given by the Sunday school of the church, Saturday afternoon at 3 o'clock.

The annual Easter Egg Hunt, said Jerry Senkarik, Superintendent of the Sunday School, will be held in Fort Mellon Park with the children meeting to take part at the Civic Building located about midway of the park.

DeBary Furniture Center's Opening Delayed Until April

In Section 2 of today's bi-monthly edition of The Herald, the Furniture Center of Sanford announced the opening of its new branch store on Route 17-92 in DeBary. Because of unforeseen construction delays, however, the actual opening of the new store will not be until sometime during the first week of April, according to Bluford R. Carroll and Huston H. Grier, owners of the big establishments.

Yearly Membership Breakfast Slated Tomorrow Morning

The annual membership breakfast of the Seminole County Junior Chamber of Commerce will be held Saturday morning at 7:30 a.m. at Mrs. Appleby's Restaurant in the Valdes Hotel, said Tony Russel, Membership Chairman for the local Jaycees.

Following breakfast, Jaycees will be divided into groups which will make personal calls on prospective members and members who have not paid their 1954-57 dues, said Russel.

This campaign Saturday will conclude the annual membership drive of the local Jaycee organization and immediately precedes the Junior Chamber of Commerce convention which is to be held in Jacksonville.

Several members of the Seminole County Junior Chamber of Commerce are expected to represent the local organization at the State convention.

Russel said, "All members of the Seminole County Junior Chamber of Commerce are urged to attend Saturday morning's annual membership breakfast."

Jaycee Easter Egg Hunt Sunday At 7

Plans are complete for the annual Jaycee Easter Egg Hunt, said Jaycee Chairman Thrasher said yesterday.

Contributions of eggs to buy egg hunts were given to Thrasher and the Seminole County Junior Chamber of Commerce is planning in the children at this time.

Wonderful prizes, do generous Sanford March be awarded to children in specially marked eggs, Thrasher said.

The Jaycee Easter Egg Hunt in Fort Mellon Park, will get underway at 7 o'clock Sunday afternoon, the chairman said, and we're expecting a good turnout of children from all over Seminole County as well as from Sanford.

Methodist Choir To Give Cantata Sunday Evening

The regular worship service of the First Methodist Church will consist of an antiphonal program of music Easter Sunday evening at 7:30. The choir under the direction of Homer E. Harris will sing "Allegretto" as organist will play "The Crucifixion" by F. Finck.

The work is built around the seven last words of Christ just prior to the crucifixion. Soloists for the evening will be as follows: Mrs. James Bizard, Mrs. Robert Bizard, and Mrs. Bernard Harber. Pianist: Mrs. Roy Wall, and Mrs. A. G. Jones Altos: Gene Knowles; Tenor: Dr. H. W. Rucker and Herbert Bennett Basses.

The choir composed of 21 members annually presents some outstanding cantatas during the season. The public is cordially invited to attend. The vespers service will begin at 7:15 with the Cantata following at 7:30. The latter portion will be broadcast.

LOOKING OVER THE PROPOSED route of 17-92 across Lake Monroe with City Commissioner John Krider are: (left to right) W. D. "Boss" Ryan, General Manager of the Minneapolis Millers; Capt. Robert W. Jackson, Commanding Officer BNAAA; Krider, and Seminole County Chamber of Commerce President George Tooby. (Staff Photo)

STATE FAIR JAN. 23-FEB. 5 TAMPA - The Florida State Fair Assn. has set Jan. 23 through Feb. 5 for the 1957 state fair to be held annually.



All Church Notices must be presented at The Herald office by 5 p.m. on the day before publication.

# Church Notices

**PAOLA CHURCH OF CHRIST**  
 George Mackin, Minister  
 Lord's Day Bible Study at 10 a.m.  
 Worship Service 11:00 a.m.  
 Preaching service 6:00 a.m.  
 Everybody Welcome

**LASS MARY BAPTIST CHAPEL**  
 Lake Mary, Fla.  
 Pastor - Rev. E. A. Frith Jr.  
 Sunday School 9:45 a.m.  
 Morning Worship 11:00  
 Training Union 6:30 p.m.  
 Evening Worship 7:30  
 Prayer Meeting Wed. 7:30 p.m.

**ELDER SPRINGS BAPTIST CHAPEL**  
 Elder Springs  
 Sponsored by First Baptist Church Sanford, Fla.  
 Sunday School 10:00 a.m.  
 W. O. Stansell, Superintendent  
 Preaching 11:00 a.m.  
 Dr. H. H. Martin, Preacher

**FINE BAPTIST CHURCH**  
 GENEVA  
 W. A. Ellwood, Pastor  
 Sunday School 10 A. M.  
 Morning Worship 11 A. M.  
 Evening Worship 7 P. M.  
 Evening Worship 8 P. M.

**THE CHRISTIAN AND MISSIONARY ALLIANCE CHURCH**  
 Park Ave. and 14th St.  
 Pastor: Rev. David S. Corbett  
 Telephone 444-E  
 Sunday, Combined Morning Service 9:45 to 11:30 a.m. Call to Worship 10:40 a.m. Evening Service 7:45 p.m.  
 Wednesday Prayer Service and Bible Discussion 7:45 p.m. Chapel Choir Rehearsal after service.  
 Thursday Youth Night Program 8:30 to 9:30 p.m. Devotional Time. Club Activities.  
 Ladies Missionary Society (8 meetings monthly). Fellowship Luncheon - 2nd Tuesday afternoon. Prayer and Business - 4th Tuesday afternoon. Sewing Circle - 4th Thursday morning.  
 "A friendly church for the whole family."

**LUTHERAN CHURCH OF THE REDBERRY**  
 Rev. W. W. Hester, Pastor  
 Services at the York Club  
 Sunday School 9:15 a.m.  
 Church Service 10:30 a.m.

**CHURCH OF GOD**  
 Rev. H. W. Hester, Pastor  
 French Ave. and 2nd St.  
 Sunday School 9:45 a.m.  
 Evangelistic Service 7:30 p.m.  
 Mid-Week Service Tuesday 7:30 p.m.  
 Young People Service Thursday 7:30 p.m.

**BERNEZER METHODIST CHURCH**  
 Citrus Heights  
 Rev. Edward Martin, Pastor  
 Sunday School 10 a.m. - Children  
 Rev. E. Johnson, Superintendent  
 Preaching Service 11 a.m.  
 W. P. M.  
 Prayer Meeting, Thursday, 7:30 p.m.

**FOSTER CHAPEL METHODIST CHURCH**  
 Ovid  
 Rev. George R. Carlton, Minister  
 10 a.m. Sunday School  
 11 a.m. Worship Service  
 7:30 p.m. Worship Service

**PAOLA WESLEYAN METHODIST CHURCH**  
 6 Miles West on Rt. 46  
 Sunday School 9:45  
 Morning Worship 10:45  
 Wesleyan Youth 6:45  
 Evening Worship 7:30  
 Wednesday Prayer Meeting 7:30  
 Everyone Welcome  
 Rev. Cecil W. Shaffer

**UPRALA COMMUNITY PRESBYTERIAN CHURCH**  
 Rev. C. C. White, Minister  
 Mrs. Clover Morris, Pianist  
 Miss Patricia Roseman, Asst. Pianist  
 Mrs. Nancy Gies, Children's Choir Director  
 Mr. George Paolci, Asst. Supt. of Church School  
 Church School, 10:00 a.m.  
 Classes for all ages.  
 Worship 11:00 a.m.  
 Children's Service 11:00 a.m.  
 Young People 6:30 p.m.  
 Children 6:30 p.m.  
 Worship 7:30 p.m.  
 Everybody invited to attend all our services.

**CELUOTA BAPTIST CHURCH**  
 Walker A. Smith Jr., Pastor  
 Sunday School 10 a.m.  
 Morning Worship Service 11 a.m.  
 Sermon by the pastor.  
 Evening Worship Service 7:30 p.m.  
 Sermon by the pastor.  
 Prayer Meeting Wednesday 7:30 p.m.

**FIRST BAPTIST CHURCH, OVIDO**  
 Louis L. Day, Pastor  
 Sunday School - 9:45 a.m.  
 Morning Worship - 11:00 a.m.  
 Training Union - 6:15 p.m.  
 Evening Services - 7:30 p.m.  
 Wednesday Prayer Service 7:30 p.m.

**FIRST BAPTIST CHURCH, OVIDO**  
 Sunday School 9:45 a.m.  
 Morning Worship 11:00 a.m.  
 Training Union 6:15 p.m.  
 Evening Services 7:30 p.m.

**ST. LUKE'S LUTHERAN**  
 In Slavia (Near Ovido)  
 Rev. Stephen M. Tuby, Pastor  
 Morning Worship 8:25 a.m.  
 Radio Mission Broadcast at 9:30 a.m. over WORZ (740 kc)  
 Sunday School 9:30 a.m. - for all age groups  
 Christian Day School - Monday through Friday 9:00 a.m. - (All elementary grades and kindergarten).

**PINECREST BAPTIST MISSION**  
 Sponsored by  
**CENTRAL BAPTIST CHURCH**  
 Located at  
 The Britt Tractor Co. - Orlando Hwy.  
 Rev. C. W. Plank Mission Pastor  
 9:45 a.m. Sunday School  
 11:00 a.m. Morning Worship  
 6:15 p.m. Training Union  
 7:30 p.m. Evening Worship

**THE LITTLE BROWN CHURCH ON THE HILL**  
 Corner Park Ave. and 24th St.  
 J. Bernard Root, Minister  
 Fred Esaminger, Associate  
 Sunday School 9:45 a.m.  
 Morning Worship 11:00 a.m.  
 Sermon: "Easter, The Turning Point in Civilization"  
 Pilgrim Fellowship at 7:30 p.m.  
**THE RISEN CHRIST**  
 God's power loosed the bonds of death.  
 And through the open door  
**THE RISEN CHRIST** came from the tomb  
 To live forevermore!

**FIRST METHODIST CHURCH**  
 Pastor - Milton H. Wyatt  
 9:45 A. M. Church School  
 Classes for all ages.  
 8:30 and 11:00 A. M. Morning Worship - Identical services.  
 Sermon Topic - "Easter Lights The Road"  
 8:30 P. M. M. Y. P.  
 7:15 P. M. Organ Vespers  
 7:30 P. M. A Cantata by Chancel choir, "The Cross"  
 Broadcast over W. T. & R.

**FIRST METHODIST CHURCH**  
 Pastor - Milton H. Wyatt  
 9:45 A. M. Church School  
 Classes for all ages.  
 8:30 and 11:00 A. M. Morning Worship - Identical services.  
 Sermon Topic - "Easter Lights The Road"  
 8:30 P. M. M. Y. P.  
 7:15 P. M. Organ Vespers  
 7:30 P. M. A Cantata by Chancel choir, "The Cross"  
 Broadcast over W. T. & R.

**FREE METHODIST CHURCH**  
 Laurel Ave. at 6th St.  
 Sunday School 9:45 a.m.  
 Morning Worship 10:45 a.m.  
 F. M. Y. 7:00 p.m.  
 Evening Evangelistic 7:45 p.m.  
 Wednesday night prayer and praise service 7:30 p.m.

**THE SALVATION ARMY**  
 214 E. 2nd St.  
 2/Lieutenant Raymond E. Laca, Commanding Officer  
 Sunday Company Meeting 10 a.m.  
 Hallness Meeting 11 a.m.  
 Young Peoples Legion 7 p.m.  
 Salvation Meeting 8 p.m.  
 Tuesday Y.P. Band Practice 4 p.m.  
 Salvation Meeting 7:30 p.m.  
 Wednesday Ladies Home League 7:30 p.m.

**ASSEMBLY OF GOD CHURCH**  
 12th St. and Laurel Ave.  
 Rev. George S. Ross  
 Sunday School 9:45 a.m.  
 Morning Worship 11 a.m.  
 Youth Service 6:45 p.m.  
 Evangelistic Rally 7:45 p.m.  
 Prayer and Bible Study Wednesday at 7:45 p.m.  
 "Remember a glad hand invites you to worship with us."

**ROUTE SIDE BAPTIST CHURCH**  
 East 27 St. At Park Ave.  
 The end of your search  
 For a friendly Church.  
 R. B. Lunsford, Pastor  
 W. L. Stephens, Associate Pastor  
 Milton Higginbotham, Sunday School Superintendent.  
 Sunday School 10 A. M.  
 Morning Worship 11 A. M.  
 Bible Study 7:20 P. M.  
 Evening Worship 8 P. M.  
 Prayer Meeting (Wed.) 8 P. M.  
 Missionary Premillennial Welcome

**CENTRAL BAPTIST CHURCH**  
 Rev. J. W. Farham, Pastor  
 Cor. Fourteenth St. Oak Ave.  
 Sunday School 9:45 a.m.  
 Morning Worship Service 11:00 a.m.  
 Training Union 8:15 p.m. It's a family affair.  
 Evening Worship 7:30 p.m.  
 "Come thou with us and we will do thee good."

**FIRST CHURCH OF CHRIST, SCIENTIST**  
 200 E. Second St.  
 Sunday Services 11:00 a.m.  
 Sunday School 9:30 a.m.  
 Wednesday Evening 8:00 p.m.  
 Meeting 8:00 p.m.  
 Lesson-Sermon: "Unreality"  
 Reading Room located in Foyer of Church Building open to public 2:30 to 4:30 p.m. Monday thru Friday.  
 A cordial invitation is extended to all to attend our services and use the Reading Room.

**THE CHURCH OF GOD OF PROPHECY**  
 283 Elm Ave.  
 Rev. D. D. Cressy, Pastor  
 Sunday School 9:45 A.M.  
 Morning Worship 11:00 A.M.  
 Sunday Night Service 7:30 P.M.  
 WMB Tuesday Night 7:30 P.M.  
 WLB Thursday night 7:30 P.M.  
 Old Fashioned Revival beginning Feb. 5. Services nightly at 7:30.  
 Evangelist R. W. Stockdale in charge. "You are invited to come worship with us."

**HOLY CROSS CHURCH**  
 (Episcopal)  
 Rev. H. Lyttleton Zimmerman, B. D., Rector  
 Easter Day  
 7:30 a.m. Holy Eucharist  
 9:00 a.m. Choral Family Eucharist and presentation of Mite Boxes  
 11:00 a.m. Festival Choral Eucharist and sermon  
 Services through the week: Monday, Tuesday, Friday and Saturday - Holy Communion - 7:30 a.m.  
 Wednesday - Holy Communion 10:00 a.m.

**FIRST BAPTIST CHURCH**  
 Park Ave. at 6th St.  
 W. P. Brooks Jr., Pastor  
 Fred R. Fisher, Associate Pastor  
 Kirby Rogers, Music Director  
 Mrs. Marvin Milam Organist  
 Early Morning Worship 8:45 a.m.  
 Sunday School 9:45 a.m.  
 Morning Worship 11:00 a.m.  
 Training Union 6:15 p.m.  
 Evening Worship (Song Service) 7:30 p.m.  
 Nursery at all services.  
**WELCOME**

**FIRST PRESBYTERIAN CHURCH**  
 Corner Oak and 3rd  
 Rev. A. G. McInnis, Minister  
 Mrs. George Teahy, Minister of Music  
 9:45 a.m. Sunday School  
 10:30 a.m. Session meets for prayer in the Session Room  
 7:30 a.m. Pioneer and Senior High Fellowships joint meeting - Philathea Class Room.  
 Sermon 8:45 and 11:00 a.m. "I Believe in the Life Everlasting" - Rev. McInnis  
 8:45 Service  
 Anthem - "Were You There" - Spiritual Youth Choir  
 Anthem - "In Joseph's Lovely Garden" - Dickinson, Youth Choir  
 11:00 Service  
 Anthem - "Easter Morning" - Male, Chancel Choir  
 Anthem - "Let All the World in Every Corner Sing" - Thiman, Chancel Choir  
 7:30 Service  
 Anthem - "Blessed Assurance" - Knapp Pioneer Choir

**CHURCH OF CHRIST**  
 2nd St. & Elm Ave.  
 Evangelist  
 Ralph Bryner Jr. Services

**SUNDAY**  
 Bible Study 10:00 A. M.  
 Morning Worship 11:00 A. M.  
 Evening Worship 8:00 P. M.  
**WEDNESDAY**  
 Bible Study 8:00 P. M.

**FIRST CHRISTIAN CHURCH**  
 1607 Sanford Avenue  
 Perry L. Stone, Minister  
 Sunday School, 9:45 a.m. Adult lessons: "The Meaning of the Resurrection." The Annual Easter offering for six missionary, educational and benevolent causes will be taken.  
 Easter Service, 11 a.m. Mrs. N. V. Farmer will be at the organ. Under the direction of Jay M. Walker the choir will sing "The Holy City" (Adam). During the service the special "30 pieces of silver" offering for the Building Fund will be brought forward and dedicated with prayer. The pastor plans to preach on "A Desirable Immortality." Coloredmen will be taken by Donald Tucker at the close of worship; also of church school classes before worship begins.  
 Youth meetings, 8:30 p.m. Evening Worship, 7:30. Mr. and Mrs. Geo. W. Moran are to act as attendance sponsors for the service. The minister will preach "The Disciples and the Bible," the second in a series on "The Disciples of Christ."  
 The public is extended a welcome to all services of worship. Especially invited are Navy families, newcomers, tourists, weekend guests and anyone without a local church home. Ample, safe, off-street parking is provided. The nursery is open during morning worship.

**GO TO CHURCH SUNDAY**

**TV SERIES for Everyone**  
 This Week:  
 Disease Is Not Incurable  
**WDBO-TV**  
 Channel 6 Saturday 1:15 p.m.



## ARTIST AT WORK

It's the day before Easter, and Johnnie is dyeing eggs. Like most little boys he finds the task pretty fascinating, and he revels in small seas of yellow and red and blue and green.

Easter morning, the eggs will have been hidden by his parents and he and his sister will excitedly hunt for them. Probably they'll stumble across some chocolate bunnies and candy chickens, also. But that will not be all of Easter, for them.

Johnnie and his sister will be going to Church, too. They may not understand the complete significance of everything they hear and see... but they are old enough to know something of what Easter means. And with each passing year they will learn a little more.

Johnnie's parents have started early to train their children in spiritual as well as physical values. Easter eggs, yes. But Church, by all means, too. Not just on Easter, either... but on every Sunday in the year.

**THE CHURCH FOR ALL... ALL FOR THE CHURCH**

The Church is the greatest factor on earth for the building of character and good citizenship. It is a storehouse of spiritual values. Without a strong Church, neither democracy nor civilization can survive. There are four sound reasons why every person should attend services regularly and support the Church. They are: (1) For his own sake. (2) For his children's sake. (3) For the sake of his community and nation. (4) For the sake of the Church itself, which needs his moral and material support. Plan to go to church regularly and read your Bible daily.

Day	Book	Chapter	Verses
Sunday	John	1	1-18
Monday	John	19	1-27
Tuesday	John	20	1-17
Wednesday	John	21	1-14
Thursday	John	22	1-17
Friday	John	23	1-14
Saturday	John	24	1-14

Copyright 1938, Kistler Adv. Service, Strasburg, Va.

This "Support The Church" Series, Published Each Week in the Sanford Herald with the Approval of the Seminole County Ministerial Association, is Made Possible by the Co-operation of these Well-known Business Establishments:

MRS. APPLEBY'S RESTAURANTS	FLORIDA STATE BANK of Sanford	BERRY'S WAREHOUSE FURNITURE CO.	SANFORD ATLANTIC NATIONAL BANK
J. C. HUTCHISON & CO.	HAROLD H. KASTNER & CO.	BOTELER WHOLESALE CONFECTIONERY	BOYD-WALLACE MUTUAL INSURANCE
BROWN'S AMOCO SERVICE C. D. Brown	GLENN GOEMBEL SUNOCO SERVICE	WILSON-MAIER FURNITURE CO.	THE KILGORE SEED CO.
WESTERN AUTO ASSOCIATE STORE	AMERICAN OIL CO. M. R. Strickland, Contractor	THE TEXAS COMPANY J. C. Davis, Consignor	SMITTY'S SNAPPIN' TURTLE
W. W. HORNE TRUCK BROKERAGE CO.	HILL HARDWARE CO.	NICHOLSON BUICK CO.	SENKARIK GLASS & PAINT CO.
BRITT TRACTOR CO.	R. L. HARVEY PLUMBING	NEHI BOTTLING COMPANY	THE MAYFAIR INN
CELERY CITY PRINTING CO.	HERRON GROVES	PROGRESSIVE PRINTING CO.	ST. JOHN'S REALTY CO.
SEMINOLE DRY CLEANERS	HOLLER MOTOR SALES	ROY WALL PLUMBING	WADE'S SUPREX MARKET
WHEELER FERTILIZER CO.	SANFORD BOAT WORKS	SANFORD AUTO PARTS	WARNER'S GULF SERVICE
STEIN MACHINE & SUPPLY CO	SANFORD LINOLEUM & TILE CO.	SHERMAN CONCRETE PIPE CO.	LANEY DRY CLEANERS



## Prime Minister To Tour Stalin's Georgia, Armenia

MOSCOW (AP)—The Soviet government announced Wednesday that Prime Minister Tage Erlander of neutral Sweden, will tour Stalin's native Georgia and neighboring Armenia, where rioting has been reported as a result of the current Kremlin denunciation of the late Soviet dictator.

The announcement of the Swedish leader's tour was taken as an indication that all is quiet in the two southern republics and that the Soviet government feels it has nothing to hide there.

Erlander's trip was announced less than 12 hours after the Communist party organ Pravda published the first broad-scale Soviet newspaper denunciation of Stalin.

He will be accompanied by Rolf Soiman, Sweden's ambassador to Moscow; other members of the Swedish staff, and a group of Swedish reporters.

Reports of disorders in Georgia have chiefly involved Tiflis University. The Tiflis newspaper Dawn of the East said in its March 24 edition the university Communist party secretary has been fired for failure to indoctrinate the students with communism. It said students had been getting classes wholesale for more than a year and some have been guilty of "hooliganism"—anti-social activity.

Reports said a student parade March 9 featured banners and pictures of Stalin and Lenin. The director of the university said in a telephone interview, however, that classes were continuing normally at the school.

Dawn of the East indicated students in Georgia already were showing renewed signs of their intense pride in their separate nationality long before the current Kremlin campaign against Stalin.

Today's 7,000-word article in Pravda was spread over 12 columns and brought home to the general Russian public for the first time the new Soviet leader's drive to chop down Stalin's "official stature."

Pravda said "Stalin's work in the first years after Lenin's death."

"But then certain features and qualities began gradually to appear in Stalin's practice of leadership which later developed into the cult of the individual," Pravda charged.

"The gigantic successes in building a new society, achieved by the Soviet people under the leadership of the Communist party, on the basis of laws of history discovered by Marxism-Leninism, were strongly attributed to one man—Stalin—and were explained by his special merits as a leader."

"He, lacking personal modesty, did not cut short the glorifications and praises addressed to him but supported and encouraged them in every way."

"As time went on, this cult of the individual assumed even more monstrous forms and did serious harm to the cause."

(The Pravda article appeared only the opening gun in a newspaper campaign against Stalin. It made no mention of the most sensational charges which reports reaching the West have said the new Soviet high command has leveled against their former chief—that he maintained a continuous reign of terror, murdered thousands of his party associates and the flower of the Red army officer corps and placed the nation in danger of Hitler conquest.)

Pravda assured the Russian people that the Soviet Union now is on the right track.

It said the Communist party is the leader and organizer of the Soviet people "and the collective leader of the party, guarding and interpreting its principles, is the Central Committee."

## Polk County Road Patrol To Clamp Down On Hot Rods

WINTER HAVEN (AP)—The Polk County Road Patrol has been ordered to clamp down on hot rod speeders following the death of policeman Gordon Stots while chasing a young speeder.

The patrol car occupied by Stots, 35, and another Winter Haven police officer, Wayne Rogers, 32, hit a tree and turned over early Wednesday. Rogers suffered internal injuries and a broken leg.

They were chasing a car driven by Jerry Alton Yon, 19, and occupied by two other youths. That car, too, overturned just before the patrol car, but the youngsters were unhurt.

County Commissioner J. B. Thornhill said the county patrol was given the job of breaking up speeding by juveniles.

## Broker, Spokesman Deny Any Intrigue Or Illegal Activity

NEW ORLEANS (AP)—A New Orleans cotton broker and a spokesman for a firm indicted by the federal government on violations of anti-trust laws Thursday denied any "conspiracy or illegal activity" and expressed confidence of vindication.

A U.S. grand jury returned the indictments against four individuals and eight cotton corporations yesterday, contending they engaged in an unlawful combination and conspiracy to restrain competition on government-owned cotton valued at 20 million dollars.

The individuals named included Morris Wolf, owner of Wolf and Co., New Orleans spot cotton firm, John P. Godchaux, Wolf's assistant; R. O. Beach Sr., Houston, Tex.; and Robert D. McCollum, Memphis, Tenn.

The eight corporations indicted included E. F. Creekmore and Co., Inc., New Orleans; Wolf Brothers Cotton Inc., Montgomery Ala.; A. Campdera and Co. Inc., Dallas, Tex.; J. A. Baker and Co., Charlotte, N.C.; Sternberg Martin and Co. Inc., Dallas; R. L. Dixon and Brothers Inc., Dallas; Creapi and Co., Dallas; and Pell Co., Charlotte.

The indictments said those named affected the conspiracy by engaging Wolf and Co., as a common purchasing agent through whom they purchased cotton.

The defendants permitted the Wolf firm, the indictments said,

to allocate bids among them on cotton offered for sale by the Commodity Credit Corporation in 1954 and 1955, and permitting Wolf and Co. to fix prices to be submitted to the merchants and the CCC.

Morris Wolf released a statement through his attorneys contending his firm believed it was "facilitating rather than restraining the disposal of unwieldy surpluses held by the government" but the "gentlemen of the Justice Department now seem to think otherwise."

Edward F. Creekmore, president of the firm named in the indictments, said he was "surprised and shocked by the action of the United States grand jury" and claimed there was "no justification for the indictment and we are confident that the company will be completely vindicated."

Asst. U.S. Atty. Gen. Stanley M. Barnes, chief of the Justice Department's anti-trust division, said the indictments charged the defendants conspired to allocate bids on cotton purchased by the CCC "so as to eliminate price competition among themselves."

Henry C. (Shag) Crawford, new umpire in the National League, was aboard the destroyer Walker when it was hit by a Japanese suicide plane during the invasion of Luzon.

and to cause damages to the United States in the operation of its cotton disposal program."



READY for a fever, a performer at a Paris nightclub appears in the odd "thermometer" costume she wears in the show. She might be said to have glomored to the 20th degree. (International)

INCREASE SOLD TALLAHASSEE (AP)—Florida had 997,200 nonfarm workers employed during February, an increase of 50,000 over those holding jobs dur-

ing the corresponding month last year.

The State Industrial Commission also reported the February employment total exceeding the January figure by 6,100.

THE SANFORD HERALD-Fri., March 30, 1956, Page 3

Rookie infielder Frank Malzone of the Red Sox once planned to become an electrician.

# JEWELRY GIFTS

## Of Taste And Distinction!

You'll Like Sanford... And We Know You'll Want To Make This Your Home...

# FRANK NOELL, JEWELER

110 So. Park Ave. Phone 1254

HERE COMES THE... **Easter Parade**

### HALF-SLIPS

Nylon & cotton, these lovely half-slips are destined to be a big success underneath your Easter outfit... trimmed with embroidered lace or plain

3.95 - 10.95

### DRESSES

In the new long, slim look... or the very full, very feminine look. We have an array of Spring's pots... wide selection of exciting all-housettes! Let us solve your Easter Dressing problem.

### HATS

Feel your prettiest and look your best in a new hat for Easter... Choose from straws, falls and fabrics in head-hugging and "brimming" styles. By Clema, Wesco.

3.95 - 15.00

### PANTIES

Rayon & nylon, brief or flare styles.

.79 - 3.00

### SLIPS

By Artemis, San Souci Van Raalte... moderately priced, easy-to-care-for. Tailored or fancy.

3.95 - 16.95

### HANDBAGS

By Garay's, these handbags are gay companions for Spring and Easter. Especially Garay's Convette, beaded in cleanable plastic. Also black patent.

5.00

### HOSE

By Clausner & Phoenix... lovely sheers in sizes 8½ - 11.

1.35 - 1.95

### CAN-CAN PETTICOATS

See our new selection of can-can petticoats, to send skirts a whirling...

5.95 - 14.95

### GLOVES

Nylon doe & cotton. Shorties by Van Raalte.

2.00 & 3.00

### JEWELRY

The finishing touches to your ensemble... chalk white and jewelry tones to pick from.

1.00 - 15.00



# Support Cancer Society, Help Make Drive A Complete Success

It seems as if by a miracle, interest in one of the most amazing organizations serving to alleviate a terrifying fear in the minds of persons afflicted with cancer, grew by leaps and bounds.

The Seminole County Chapter of the American Cancer Society is one of the newer organizations of our community, but through its program has become one of the most well known.

Regularly, at meetings of various civic, fraternal, and service organizations, for both men and women, a program of public education has been conducted by the local organization through talks, film presentations, and literature.

Whenever the word "cancer" could be inserted as a preventative educational program, a doctor's examination program there has been someone to guide the thinking and direct interest toward the organization working hardest—the Seminole County Chapter of the American Cancer Society.

Already established here is a Loan and Gift Closet to serve indigent patients, to furnish bandage and dressing service, to render aid in any way in which they could alleviate the suffering and his fear created by a disease that is taking more lives than many of the other disastrous diseases.

The Seminole County Chapter of the American Cancer Society stands ready to furnish transportation or the cost of transportation to and from Tumor Clinics for indigent cancer cases authorized by local public health officials—and to pay for room and board for ambulatory indigent out-patients receiving treatment at approved Tumor Clinics.

Behind the efforts of the Seminole County Chapter of the American Cancer Society is the National Research Program of the American Cancer Society, a gigantic program delving into the cause, cure, prevention, and alleviation of the disease that has struck American people the hardest.

The Seminole County Chapter of the American Cancer Society does not pay for hospitalization of indigent cancer patients, a service which is available through the Division of Cancer Control of the Florida State Board of Health.

## The Sanford Herald

Published Daily Except Saturday and Sunday  
 Entered as second class matter October 27, 1919  
 under Post Office No. 1074, under the Act of Congress of March 3, 1879.  
 POST OFFICE: Sanford, Florida  
 KARIS HARRIS, Editor and Publisher  
 KARIS HARRIS, Inc., Executive Office

Subscription Rates: \$1.00 per month in advance.  
 Single Copies: 10 Cents

Page 4 Friday, March 30, 1956

### TODAY'S BIBLE VERSE

Blessed are the meek, for they shall inherit the earth.—Matthew 5:5.—Warlike nations have perished as nations from Sum-er and Babylon and Assyria and their slaves have risen to importance. Sheep have out-lived the tigers.

## Moysey's Raid Has Lot Of Angles

By JAMES MARLOW  
 Associated Press News Analyst  
**WASHINGTON** — Donald R. Moysey's raid on the Communists for back taxes has a lot of angles.

The Democrats and Republicans are a little embarrassed; the Justice Department is speechless; Moysey's bosses didn't seem to know what he was up to; calling the Communists a "political party" is like using a naughty word.

If there's general confusion about Moysey's operations it is because the Internal Revenue Service—his director for Lower Manhattan—has not yet issued a clear or full explanation of what he did and why.

He raided the Communist par-

ty's headquarters in New York and its newspaper, the Daily Worker, and seized its property for back taxes. He had directors in other cities make similar raids at the same time.

It's almost unbelievable all this could have been planned and carried out without the knowledge and approval of Moysey's boss, Revenue Commissioner Russell Harrington, and other government officials. But he did give the appearance of being completely surprised.

Moysey contends that the Communist party owes taxes and has never filed a return. The Communists argue they don't have to file a return, saying they make no profit and live off contributions.

A revenue service tax expert here says political parties, even though making no profit, must file a return. He did not say the Communists are a political party.

He explained that corporations, with or without profits, must file returns. Political parties have "all the attributes" of a corporation in that they are run by a chosen group of individuals for the benefit of the members, this man said.

Now it is learned the Democrat-ic and Republican parties evidently have never filed returns. They argued yesterday that because they are political, living off contributions, they don't have to file.

There is a penalty for not filing: up to a year in jail and a fine of \$10,000. Will the government prosecute the Republicans and Democrats? Hardly. Revenue agents have never asked to see their books.

As far as this writer knows no one in the government—in connection with the Moysey raids—has called the Communists a "political party." It may be an accident. But there would be a good reason for not doing so.

Under the corrupt practices law political parties which try to influence elections in more than one state must file with the House of Representatives a report on their

income, where they get, how they spend it.

The Democrats and Republicans file these reports. House employ-

say they cannot recall ever having seen such a report from the Communists. It's hard to see how they could call themselves a political party and argue that they don't try to influence elections.

# EASTER

Julie Clark Jr.  
 Suits  
 WITH MATCHING  
 HATS.

- Box Jackets
- Duster Coats



Mary-Esther's

"Featuring Fashions Just For You"  
 200 No. Park Ave.

## Holy Week



**THE CRUCIFIXION**—With the thieves on either side of Him, Jesus was crucified on Calvary. "Then said Jesus, Father, forgive them; for they know not what they do. And they parted His raiment, and cast lots." As Jesus hung dying on the cross, darkness descended upon the land from the sixth hour to the ninth hour, when He cried, "My God, my God, why hast thou forsaken me?" An on-looker extended to Him a vinegar-soaked sponge, but "Jesus, when He had cried again with a loud voice, yielded up the ghost." As He died, the veil of the temple was torn in two, the earth shook and rocks were split. "Now when the centurion, and they that were with him, watching Jesus, saw the earthquake, and those things that were done, they feared greatly, saying, Truly this was the Son of God."



## LETTERS TO THE EDITOR

March 30, 1956

**Editor:**  
 Seminole County Tuberculosis and Health Association wishes to thank publicly the men and women who have so unselfishly aided in the 1956 Christmas Seal Sale officially ending this month. Through the devotion and efforts of these individuals we have raised \$5,948.25, for next year's program of TB control in Seminole County.

We owe a debt of gratitude to The Sanford Herald, the Orlando Morning Sentinel, WTRR Radio Station, the local theatres, postal employees, the organizations and churches whose members assisted in preparing Seal Sale letters and tabulating returns, the youth groups who distributed posters and conducted the Street Sales; and last but not least the families who contributed to the traditional Christmas Seal Sale.

Robert E. Karns  
 Seal Sale Chairman

The United States uses about 500 million tons of coal a year.

say they cannot recall ever having seen such a report from the Communists. It's hard to see how they could call themselves a political party and argue that they don't try to influence elections.

## Try and Stop Me

By BENNETT CERR

**OLD "FIVE-ACE"** Slatery, slickest card sharp on Mississippi waters, aimed to persuade the travelling reverend to turn his interest elsewhere. "You shouldn't ought to look at me thata-way," wheedled Five-Ace.

"Fact is, I'd like mighty well to hear you preach."

"You could have heard me last Sunday," frowned the reverend, "if you'd been where you rightfully belong."

"Where was that, sir?" asked Five-Ace.

"In the state penitentiary," said the reverend.

Confronted by that time-honored query: "If you were marooned on a desert island, what would you like to have for reading matter?" A Broadway chorus babe gave the answer to end all others: "A tattooed sailor."



TO THE DOCTOR ON DOCTOR'S DAY	months delayed!
How long has it been since you thanked him?	And the night his own love was in labor,
For ministering to your ills in the night?	Could he stay, and be a comfort to his mate?
For time he has spent with your loved ones?	And to share in a first welcome of his baby?
And eating a mind filled with fright?	No, your heart attack was one that could not wait!
When last did you express appreciation for a sympathetic ear to your woes?	Did you think to thank him when his cigarette daughter made her debut as Cinderella on the stage?
For a visit "beyond the call of duty"?	He could hardly wait to see her first performance—
For a bandage on little bare/oot toes?	That's the time YOUR daughter's fever had to rage!
What of the time he planned a much needed vacation—	If you see that you've been lax in paying tribute
Bags all packed, and his reservations made	To every person who's a friend in every way.
When he was summoned for your emergency operation?	Why not show some little act of kindness to him?
One vacation — only six more	On this, his own DOCTOR'S DAY!

# The Easter LOOK



**IT STARTS WITH THE DRESS** be it trim and smartly tailored or frilly and bouffant. Ro Jay has the individual model made for you! Your best color, your most becoming style, in junior, misses, & half size.

### IT CONTINUES WITH ACCESSORIES

Jewelry, flowers, scarves . . . to add a spot of interest . . . to highlight a color. Ranging in price from \$1.00 up.



**IT IS COMPLETED WITH FINE LINGERIE** By Henson, Vanity Fair, luscious thin nylon to compliment your new dress . . . tailored or very lacy.



Gloves by Dawnell, to match or complement your color scheme. Shorties, & lengths or long gauntlets in Elvete, nylon or sheers . . . white of course as well as pastels and dark colors.



TOES by Berkshire . . . in seamless, sandal sole or mesh. In the newest Spring shades.



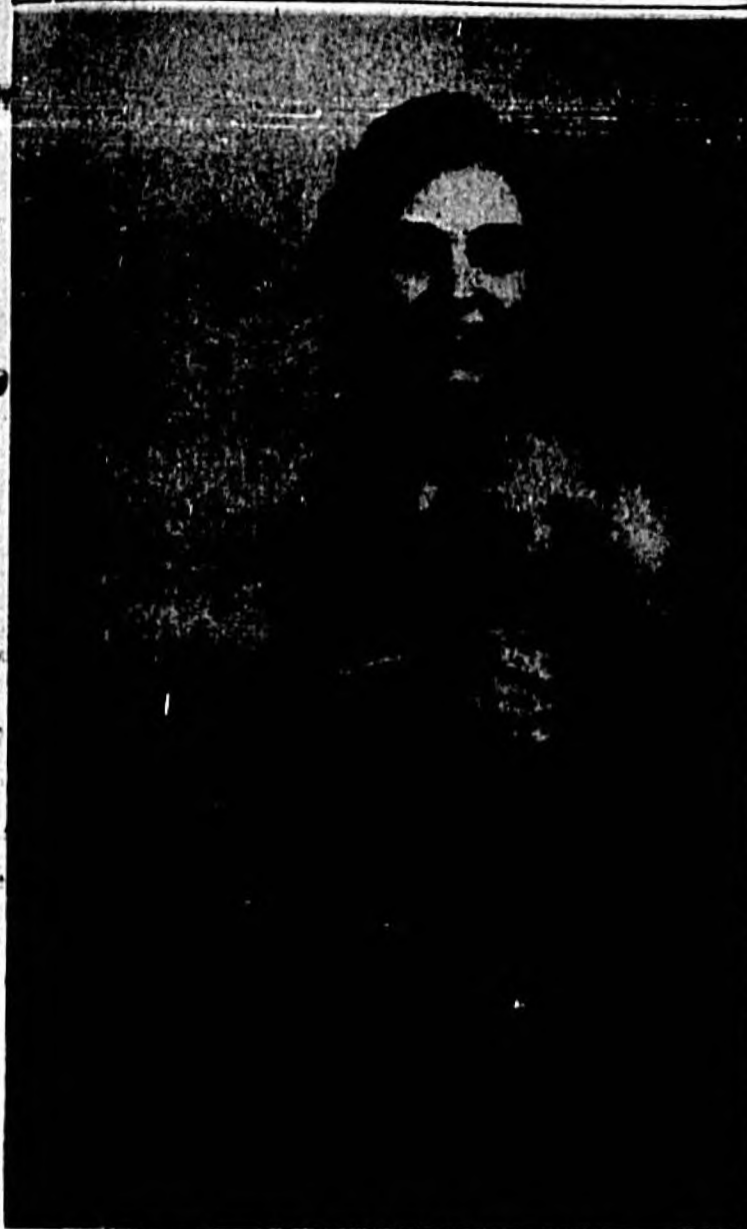
Ro Jay

Accredited Charge Accounts Welcomed!

Dear Governor  
**LeRoy COLLINS**  
 Discuss  
**Florida's Growth**  
**WDBO-TV**  
 Today.  
 6:30 p. m.  
 Keep Florida Climbing . . .  
 Keep COLLINS  
 (Sponsor for Governor  
 LeRoy Collins, and for his  
 Economic Team.)



# Social Events



Miss Mildred Miller

## Engagement Of Miss M. Miller, George Harden Revealed Today

Mr. and Mrs. Robert C. Miller Sr., of Sanford announce the engagement of their daughter Mildred Eugenia to George Cyrus Harden Jr., son of Mr. and Mrs. George Cyrus Harden, also of this city.

Miss Miller, a graduate of Seminole High School, attended Boston University and in June will receive her Bachelor of Arts degree in History from the Woman's College of the University of North Carolina in Greensboro.

Mr. Harden, also a graduate of Seminole High School, attends Duke University in Durham, N. C., and is a member of Lambda Chi Alpha Fraternity.

The wedding will take place Saturday, June 23, in the First Presbyterian Church in Sanford.

## Mrs. Ed Cox Is New Circle Leader For Anna Millers

Tuesday evening Mrs. James Blankenship presided over her last meeting of the year as president of the Anna Miller Circle when the ladies met at the Elks Club.

Officers elected, as presented by the nominating committee, were as follows: Mrs. Ed Cox, president; Mrs. Harry Adair, first vice president; Mrs. A. P. Bowersox, second vice president; Mrs. Roy Chorpensing, secretary; Mrs. James Rosenow, recording secretary; Mrs. Richard Mann, treasurer, and Mrs. L. G. Skates, chaplain.

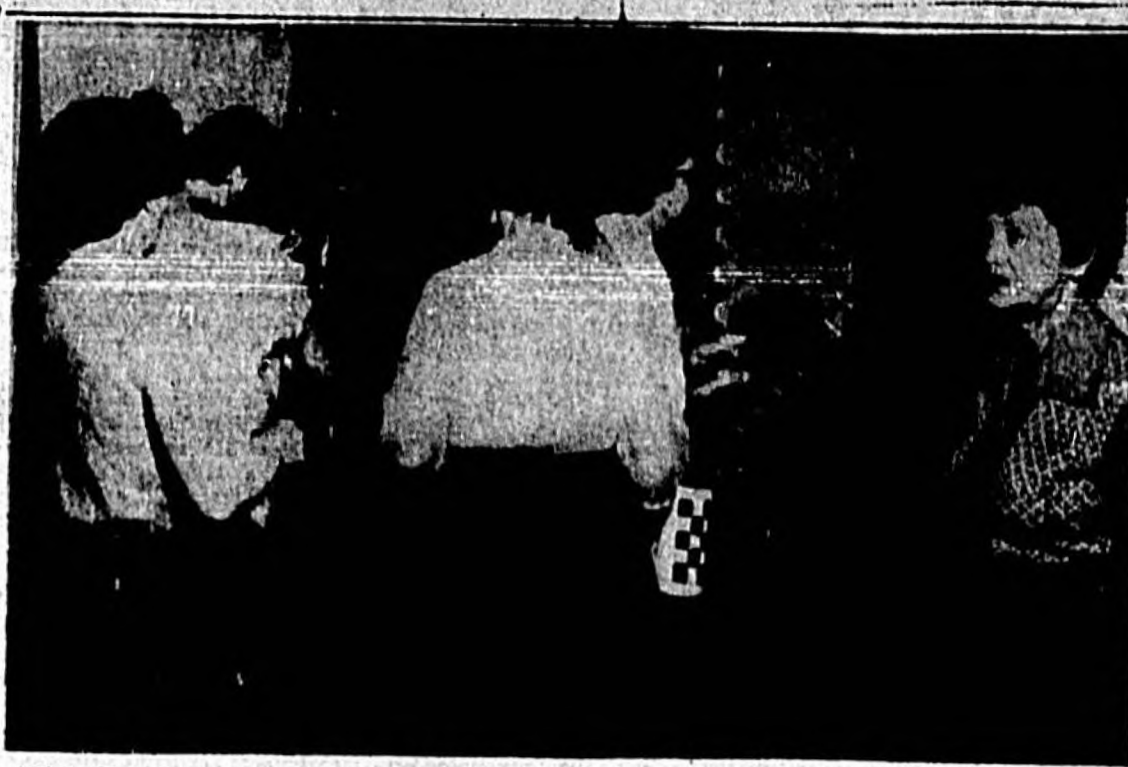
The outgoing president expressed her sincere appreciation to the members who extended their cooperation to her during her term of office. Following this brief "thank you" reports were submitted by various committee chairmen and officers.

Mrs. Dorothy Via served tasty refreshments after the business meeting came to a close. Co-hostesses were Mrs. A. P. Bowersox and Mrs. Clay Smith.

Present were Mrs. Evelyn DeMatteo, Mrs. Martha J. Lange, Mrs. Gene Walter, Mrs. Morris Moses, Mrs. B. E. Rogers, Mrs. H. C. Disbrow, Mrs. Marie Stafford, Mrs. J. M. Cameron, Mrs. Gregory Kinlaw, Mrs. H. F. Kent, Mrs. Harold H. Kastner, Mrs. James Blankenship.

Mrs. Dorothy Via, Mrs. Peter Bukur, Mrs. Lowell Ozier, Mrs. Jimmie Hoolehan, Mrs. A. Menninger, Mrs. E. J. Moughton Jr., Mrs. W. J. Clark, Mrs. Eddie Stout, Mrs. James Rosenow, Mrs. Edward Cox, Mrs. Wesley Fillmon, Mrs. Clayton Smith, Mrs. Pete Bowersox, Mrs. Harry Adair.

Mrs. R. H. Gohbell, Mrs. Robert J. Thomas, Mrs. Mary Roettger, Mrs. Clara C. Williams, Mrs. H. F. Hale, Mrs. J. W. Childre, and Mrs. L. G. Skates.



APPROXIMATELY 185 women attended the showing of the film on cancer, "Breast Self-Examination" sponsored by the Seminole County Unit of the American Cancer Society. (Photo by Jameson)

## Judy Lavender Is Honored By Mother On 10th Birthday

Judy Lavender was honored Monday afternoon by her mother on her 10th birthday. Decorations carried out the Easter theme. The dining table was covered with a linen cloth and centered with decorated birthday cake.

After the guests arrived refreshments of ice cream, cake, "little" candy eggs and cold drinks were served.

After the honoree opened her many gifts, games were played and prizes were won by Joy Duggar, Joy Trippie, Bobby Slaughter and Diane Smith. Flash pictures were taken during the party.

Invited guests were Donna Peters, Janet Johnson, Diane Smith, Pat Rabun, Joy Duggar, Susan Haynes, Jonelle Lee, Connie Constantine, Marilyn Rowland, Joy Trippie, Wayne Kelly, Tommy Raggery, Bobby, Billy and Barbara Slaughter, Jill Pennington and Joy Shepherd.

Assisting Mrs. Lavender were Dottie Metts and Randal Lavender, Mrs. Naomi Taylor, Mrs. R. A. Slaughter and Mrs. W. W. Tyre.

Put thick strawberry or raspberry jam on top of muffin batter — about a teaspoon for each muffin. Swirl it into the batter lightly with a teaspoon, then bake as usual.

## Personals

John Fite is in Sanford to spend the spring holidays with his parents, Mr. and Mrs. K. W. Fite, at their home on Celery Ave., enroute home from Duke University where he is a graduate student. He visited friends in Lookout Mountain, Tenn. on the way down.

Mrs. Sara F. Davis and daughter, Dr. Sara F. Davis of Bessemer and Birmingham, Ala. will arrive Thursday to spend a few days with Major and Mrs. Joe T. Davis and son, Joe, 101 Mellonville Ave.

Margie Dufosse Weekly, daughter of Mrs. G. L. Weekly of Orlando was admitted to the Orange Memorial Hospital Thursday for surgery.

Evie Marie and Rose Kratzert left yesterday to spend Easter in Tallahassee as the guests of Mr. and Mrs. W. D. Hopkins. Evie will attend a House Party with a group of her former classmates at Cockran's Beach while there.

C. R. Flowers will arrive home from Clemson, S. C., to spend the Easter holidays with his parents, Mr. and Mrs. C. M. Flowers. C. R. is a freshman at Clemson College.

Cook dried celery just until another cooked vegetable — carrot, celery and drain; mix with vinaigrette.

## Seminole County Unit Deems Film On Cancer Success

One of the most successful educational programs was held yesterday morning at the Ritz Theatre on "Breast Self-Examination", sponsored by the Seminole County Unit, American Cancer Society.

Over 185 women viewed this all-important, life saving film. Immediately after the film, Dr. John M. Morgan, medical director conducted a lively open forum.

For the first time in the Florida Division a baby sitter service was organized to enable mothers and baby sitters to attend. This was deemed very helpful, since 17 mothers availed themselves to this accommodation.

Mrs. Julius Dingfelder, president, addressed the group briefly. Contributing to the success of the show were E. Kinbrell, manager of the theatre, Berner Winn, projectionist, R. T. Milwee, who had nearly 5000 notices mimeographed and distributed through the schools; Mrs. Kitty Welsh of the East Side Nursery who donated her services; The Sanford Herald, Orlando Sentinel, Radio Station WTRR, Andrew J. Bracken and Mrs. Roy F. Mann of the educational committee.

## 4th Grade Students Present 1 Act Play At Primary School

"An Early American School" a dramatization in one act was presented Wednesday morning at the Southside School at 11 a. m. by the Fourth Grade of Mrs. Hilda Davis and directed by Miss Caroline McInnis and Mrs. Joe Davis.

The play took place in the school auditorium and included: Dick Emerson, school master; Randy Rogers, Tom; Don Evans, Jim; Brenda Brown, Sally; Nancy Perkins, Betsy; Doyle Carlton, Si; Marilyn Shears, Molly; Linda Baty, Mary; Steve Lemos, Sam; Bobby King, Pierre; Tommy Griffin, Joseph; Bill; Sandy Herbish, Kate; Margaret Pitts, Katy; Karen Wallsteadt, Susan.

Randall Chase, Jake; Judy Carroll, Ma; Barry Barks, Pa; Rickey Sires, Dan; Ronnie Davis, Mr. Harding; Billy Slaughter, Mr. Lane; Janet Johnson, Mrs. Lane; Sue Cellegich, Grandma Carter; LeRoy Griggs, Grandpa Carter; Butch Mills, Mr. Gray and Carol Anne Samuel, Mrs. Gray.

Bananas and chubarb make a delicious pie filling.

## THE SANFORD HERALD

Fri., March 30, 1956, Page 2



Try This One

### SUNDAY NIGHT SUPPER

Here's one of the best ways to know to use chicken giblets.

Tomato Soup  
Chicken Giblet Sandwiches  
Fresh Blue Potatoes

### Beverage

CHICKEN GIBLET SANDWICHES

Ingredients: 4 slices bacon; 8 chicken livers; cooked pizzards hearts and necks from 3 chickens after having been used for stock; 1/4 cup finely diced celery; 1/4 teaspoon onion powder; 1-2 cup mayonnaise.

Method: Fry bacon until crisp; drain. Pour off all but about 1 tablespoon of bacon fat; cook chicken livers in it. (OR livers may be cooked in 1-tablespoon of butter or margarine.) Cut pizzards away from giblets and strip neck meat from bones. Put livers, pizzards, hearts and necks in processor. Add fine knife or food chopper. Add crumbed bacon, celery, salt, pepper to taste, onion powder and mayonnaise. Makes 1 1/4 to 1 1/2 cups. Use as a spread with salad greens for sandwiches.

### PINEAPPLE COOLER

Ingredients: 2 cans (1 pint and 8 fluid ounces each) pineapple juice, 1 bottle (12 ounces) carbonated water, maraschino cherries, mint sprigs.

Method: Chill pineapple juice and carbonated water. Dilute pineapple juice among tall glasses; add ice cubes. Fill with carbonated water. Stir gently. Garnish with cherries and mint. Makes 6 servings.

All Calendar Listings And Society News Are Requested By 5 p. m. The Day Preceding Publication

# Calendar

### FRIDAY

The congregation of First Baptist Church will unite with other churches in the Good Friday service at First Presbyterian Church from 12 noon to 2 p. m.

### SATURDAY

Vance Duke will lead the Jr. R. A. at First Baptist Church at 9:30 a. m.

The Annual Easter Egg Sale will be held in front of Sears Office by the Pilot Club of Sanford.

### SUNDAY

The annual Easter Sunrise Service, sponsored by the Seminole County Ministerial Association, will be held at 8:10 a. m., Sunday Apr. 1, at Memorial Stadium.

The Catholic Women's Club sponsors an Easter Egg Hunt after 8 o'clock Mass for the preschool and school children from the 1-4 grades. Those coming are asked to gather on the front lawn.

### MONDAY

The Sunbeams and G. A.'s will meet at First Baptist Church at 8:30 p. m.

The Catholic Women's Club will meet at the Yacht Club at 8 p. m. Mrs. Dykens, superintendent of the Hospital Nurses will be speaker.

The Friendship Class of the First Christian Church (on Sanford Ave.) will meet at the church at 8:30 for a covered dish supper. Bring your own silver.

The Women of the First Presbyterian Church of Sanford will have an Executive Board meeting at 10:00 a. m. in the session room at the church.

The Philathea Class of the First Presbyterian Church will meet at 7:45 p. m. at the home of Mrs. P. T. Plety in Ocoee. Mrs. Graham Hunter is co-hostess for the meeting.

The Ethel Root Circle will meet at the Congregational Church at 8 p. m. Mrs. James Eastman and Mrs. Oscar Zittrower will be hostesses.

### TUESDAY

The regular business social meeting of the Daughters of Wesley will be held at 7:30 p. m. at McKinley Hall with Mrs. A. B. Stevens group as hostesses.

CWF Circle of the First Christian Church will meet Tuesday, 8:30 p. m., at the parsonage, 1601 Ready-to-use sheets of strudel dough now come frozen.

Sanford Ave., with Mrs. Perry L. Stone as hostess.

The monthly meeting of the board of elders, deacons and deaconesses of the First Christian Church will meet Tuesday, 7:30 p. m. at the church. O. D. Landress is chairman.

At 10:30 a. m. the Women of the First Presbyterian Church, Sanford will conduct an "Intensive Bible Study on Book of Deuteronomy" to be held in the Educational Building of the church. A covered dish luncheon will be served at noon. Mrs. H. H. McCaslin, Spiritual Growth Chairman, will be in charge of the meeting.

The Sanford Tourist and Shuttleboard Club will meet at the center at 8 p. m.

There will be a business and program meeting at the Methodist Church at 9 a. m. with board meeting also planned. Program at 9:45 a. m.

The Adult Ensigner Bible Class will hold its monthly social in the Congregational Church Fellowship Room at 7:30 p. m.

### WEDNESDAY

The worship committee of the First Christian Church, B. H. Williams, chairman, will meet Wednesday, 7:30 p. m. at the home of Mrs. J. L. Horton Sr., 705 Palmetto.

Circle No. 9 of the First Presbyterian Church will meet at 10 a. m. in the home of Mrs. John Burton, 2639 So. Laurel Avenue. Mrs. Hugh Whitehead Jr. is chairman of Circle No. 9.

The First Presbyterian Church will have its mid-week Bible hour of the First Presbyterian Church at 7 p. m. and at 7:30 p. m. Chancel Choir rehearsal.

Circle No. 9 of the Presbyterian Church will meet at 10 a. m. at the home of Mrs. J. Burton, 2639 Laurel Ave.

A general business and social meeting of the Sanford Woman's Club will be held in the club house with Mrs. Alyce D. McPherson, Superintendent Florida State Industrial School for Girls as guest speaker. Luncheon at 12:30. Reservations should be in to Mrs. Oscar Harriman, 2084 telephone.

### THURSDAY

At 7:30 p. m. the Youth Choir will have their rehearsal. At 8 p. m. Junior Fellowship will have their meeting.

The Southside P-TA will have a regular meeting to be held at the school. Teachers will talk to the parents at 7:30 p. m. with session to begin at 8 p. m.

## Your Girl Scouts

The Girl Scouts and Brownies of Sanford have spent a busy month. Girl Scout week began March 12, the day on which the first troop was started by Juliette Lewis in Savannah, Ga.

The girls took this opportunity to acquaint folks with their activities.

Mrs. William Norris, Brownie Troop No. 8, had a fine home making display in the window of the Florida Power and Light Co. Brownies displayed Brownie paper dolls depicting "International Friendship" by Mrs. Jim Grant's Troop 3 and Robbs Bakery carried a display of merit badge posters done by the girls of Mrs. Fred Robbs Scout Troop No. 9.

Girl Scout Week was climaxed by Play Day, held March 17, at the Elks Playground. The girls participated in contests of speed and skill and honors were taken by Brownie Troop 3 and Girl Scout Troop 9.

The cookie sale was more successful than ever. There were 3,728 boxes of cookies sold which indicated a lot of work.

We would like to thank everyone who helped to make our sale so satisfying. This is the Girl's only opportunity to earn money for the Girl Scout organization as well as for their troops.

Brownie Troop 2 led by Mrs. J. J. Butler and sponsored by Beta Sigma Phi Sorority have been busily making puppets. They have completed a theatre and are planning a puppet show.

Troop No. 3, which meets at the Presbyterian Church, under the leadership of Mrs. Jim Grant and Miss Nancy Robbs, spent last Wednesday afternoon at the playground. This week they had an Easter Egg Hunt with Pat Bassett and Nancy Perkins finding the greater number of eggs.

Troop No. 5 sponsored by the Christian Missionary Alliance Church under the leadership of Mrs. William Norris held a birthday party on Margaret, Tuesday, last birthday. The girls enjoyed the refreshments which Margaret's mother provided. The troop elected new officers and those for the coming year will be chairman, Theresa K. Sparr; treasurer, Virginia Norris; reporter, Doris Barton; sergeant-at-arms, Phillis Johnson. Mrs. Norris and her girls welcome Mrs. E. E. Johnson as assistant leader.

Girl Scout Troop 9 with Mrs. Fred Robbs as leader and Mrs. R. E. McKnight as assistant, held a cook-out at Silver Lake Wednesday. Two of her girls are suffering broken arms. Sally Robb had a fall Thursday and Saturday, Linda Echols was thrown from her horse.

Troop 11 with Mrs. R. E. Spencer assisted by Miss Jane Williams are planning a talent show. We will hear more of this later.

Mrs. C. R. Jones with Mrs. Robert Berg as assistant leader is working with her new girl scout troop in forming patrols complete with flags and symbols. The girls are making the flags by hand and are quite proud of them. Recently the troop built "one-match" fires in Ft. Mellon Park and are said to be experts.

The troop, started this year, is sponsored by the CPO Wives Club of the BNAAS and has done many activities. Mrs. O. E. Clause has been a great help with the starting of the group and much thanks must go to her for her help and patience.

little girls in a fashion whirl in nannette\* Toddler Fashions

Flowered no-iron nylon with bouffant skirt and its own attached nylon net crinoline. Lace edged collar and charming accents of satin ribbon at bodice and skirt. In pink or blue. Size 1 to 3. Other Dresses for Toddlers 1.98 to 7.98



sweet ensemble...

Dress 'n sweater!

CINDERELLA'S new outdoor-able ensemble for spring through summer! Lovely sleeveless cotton dress... scalloping at the yoke... dazle-white collar edged with braid. Plus its own braid-decorated orlon sweater to match! Waashe party-new. Sizes 8 to 14. Other styles 2.98 - 5.98

GAY PRINTS Capture the Easter Mood



DRESSES

Tissue faille sheath dress with a flattering neckline and two pockets. Rayon linen duster lined with same material as dress. 17.95

Other dresses in the Easter mood. Cottons, rayons, and acetates. Priced from 5.88 to 19.95

SLIPS

Slips and half-slips, nylon and multi filament crepe. By Luxite Rogers & Seamproof. Tailored and lacy, in sizes 32-48 also half sizes. 2.98 - 8.98

HANDBAGS

In plastic & straws, white, natural & pastel colors. 2.98 Plus Tax

JEWELRY

Beautiful Summer jewelry to complement the Easter Mood. 1.00 - 2.98

Hollywood SHOPS

By HANES SEAMLESS HOLEPROOF ENIRO 1.00 to 1.65









THE BOARD OF DIRECTORS of the Sanford Kiwanis Club, one of the many civic groups meeting regularly in Sanford. Shown in front row (left to right) are: B. B. Crumley, Roy Mann, A. L. Wilson, president; Ed Shinkels, M. R. Strickland, and El Lane. Back Row: David Gatchel, Oscar Harrison, Willis Peacock, J. C. Davis, Douglas Stenstrom, Ralph Smith, and Dr. L. T. Doss. (Photo by Jameson)

## New York Is Ready For Easter

NEW YORK (U. S. News) — New York is ready for Easter. The city is blooming and blossoming, dressed to the teeth in a new spring outfit, a perky little bonnet and a corsage of lilies. What if you can still see your breath in the frosty air? It's spring, the Easter parade is at hand and our town likes to celebrate.

The avenues have been turned into galleries of color. They make you think of gold and alabaster, like the corridors of a palace. As usual, the window decorators are having a field day. They have dressed the stores with great banks of flowers, azaleas and hyacinths in a fury of color, and streamers of yellow and blue and purple paper, and golden chickens and wonderful white rabbits as big as "Harvey." If you remember him.

I don't know which was more fun—watching the wonderment and delight in the eyes of a little girl when she saw the cascade of jelly beans, millions of jelly beans, all colors of the rainbow, in a candy-store window.

Or listening to two teen-agers in front of a foreign airplane window which features a bride in a glistening, diaphanous veil, and photographs of Grace Kelly and her prince. "Well, I don't care what anybody says, I think he's cute."

Then the sound of birds, twittering, pulled me up short. Birds on Fifth Avenue. It was too chilly for anything less than a penguin. Well, the song came from a loud speaker above a store front, and as you looked up, a gay, happy sign was saying, "Hello Spring."

At another corner, there was the smell of a fresh, bracing perfume. It created whole images, violets, or open fields, or perhaps bluebells glistening with dew in a forest glen. That was coming from a store too, and making people stop and sniff and smile.

Even a book store was all brightened up with "Easter eggs," made of the same crinkly colored paper you use at Christmas. And somebody had put a bright yellow daffodil in the binding of a book that, somehow, you seldom associate with daffodils—"The Decline of the West." It gave old Doc Spengler a real rakish look.

I turned down a cross street and found the sidewalk completely blocked with boxes of azaleas. It looked like a purple bonfire. They were in front of a flower store, and an attendant was taking them inside. I asked him if he expected to sell all of them before Sunday. "Brother," he said, panting a little, "I just wish I had double this many."

I was interested but puzzled as to whether there is a vogue in hats this year. Some are large, white and look like upside-down flower bowls. The girls say they make you look thin. Then there are some jaunty little confections, neat and close-fitting, with a pony or two. Still others made me think of flying saucers. It's a little confusing.

The best surprise of all was—guess—a bank!

This bank is in a new building which is beautiful even without

## President Accepts Resignation Today Of Douglas McKay

WASHINGTON (U. S. News) — President Eisenhower today accepted "with profound personal regret" the resignation of Douglas McKay as secretary of the interior. He wished McKay well in his campaign for re-election.

McKay's resignation is effective April 15. He has entered the May 18 Oregon Republican primary in a bid for the Senate seat now held by Sen. Wayne Morse who turned Democrat after election as a Republican.

The White House made public McKay's letter of resignation and a reply by Eisenhower accepting it.

Asked about a possible successor to McKay, press secretary James C. Hagerty said he doubted there would be any announcement on that until about the time McKay's resignation is effective.

There has been considerable speculation that the post may go to Clarence Davis, now undersecretary of the department.



SANFORD'S POLICE DEPARTMENT AND LAW ENFORCEMENT officers are thoroughly instructed. Here is one class being instructed by FBI Special Agent John Lupton. (U. S. Navy Photo)

THE SANFORD HERALD  
Fri., March 30, 1956, Page 1

## Judge Undergoes Popping Experience

OKLAHOMA CITY (U. S. News) — Municipal Court Judge James Dempski was subjected to an eye-popping experience.

"The defendant and his eyes blood shot," a patrolman said in citing evidence against a defendant charged with drunk driving.

The defendant then insisted on a private conference with the judge in the judge's chamber, the defendant disengaged a glass eye.

"I just want you to know that this glass eye is made with blood shot streaks in it and that it wasn't my real eye," he said.

The judge, a bit unnerved, postponed a decision in the case.

King Hairan is one of the best 2-year-olds to run in Florida during the winter. He won the Hialeah Juvenile and Florida Breeders' Stakes.

Glenn Williams, president of the Ohio Bowling Proprietors' Assn., rolled scores of 240, 248, 237 in one series on his own.

## Sadler, Pep Will Meet Next Month

TAMPA (U. S. News) — Jimmy Sadler, world featherweight boxing champ, has agreed to meet Willie Pep, the former title holder, here next month in their fifth bout, a Tampa promoter said.

Promoter Jimmy Donofrio said the 15-round bout would be at Al Lopez Field. A contract has not been signed.

Pep, a veteran of more than 200 fights, last lost his featherweight title to Sadler by a ninth round knockout in New York Sept. 29, 1951. The two haven't fought since.

## Businessmen Looking For Pickup

NEW YORK (U. S. News) — March bows out of the business scene more like a lamb than a lion. And businessmen look to April for the first sign of a spring pickup that would take them out of the current leveling-off condition.

A revival of confidence was the outstanding mark of March. Seeds were planted for future expansion. Some hope that April will see them germinate.

Secretary of Commerce Weeks, however, thinks the pickup may be two or three months away. By then contracts will be let and business will start spending the money for the record amount of new plant and equipment it plans to buy this year.

Retail trade as a whole continues to run a little behind the re-

**AUTO LOANS**  
Lowest Cost

**SANFORD**  
ATLANTIC NATIONAL BANK

INSTALLMENT LOAN DEPT.  
Member FDIC

Give Someone an Easter Treat  
With Flowers From  
**A. K. ROSSETTER, FLORIST**  
Celery Ave. Phone 212

See Us For The Finest In

- Courages
- Arrangements
- Potted Plants
- Memorial Designs
- Dish Gardens

Easter Lilies, Hydrangeas, Gloriosa, Rose Bushes, Hyacinths, Daffodils, Azaleas, Conerarias are just a few of our beautiful potted plants.

Flowers telegraphed anywhere

**Easter Greetings**

May the coming of this Holy Day lift your heart and may you find peace and comfort in the beauty and magnificence of your church this Easter Sunday.

**FIRST FEDERAL Savings & Loan**

If Missing The FLORIDA TIMES-UNION Daily Delivery Phone 1737 for Prompt Service

**MOSES IN BULRUSHES**  
ASHLAND, Va. (AP) — If you want to see the Moses, come to the Bulrushes. Mr. and Mrs. El-Holt Moses said people were always getting their names wrong—Moser, Moser, Moss or just about anything but Moses. They started saying "Moses of the Bulrushes." They named their home "Bulrushes," and a large sign at the entrance proclaims it.

**SOKC**

LAST NIGHT'S RESULTS

First Race — 2:10 Mile, Time: 2:15	Blue Bolt	11:20	2:40
Second Race — 1:16 Mile, Time: 1:14	Stomach Bum	11:20	2:00
Third Race — 1:16 Mile, Time: 1:14	Quintella (2-3)	11:20	2:00
Fourth Race — 1:16 Mile, Time: 1:14	Quintella (2-3)	11:20	2:00
Fifth Race — 1:16 Mile, Time: 1:14	Quintella (2-3)	11:20	2:00
Sixth Race — 1:16 Mile, Time: 1:14	Quintella (2-3)	11:20	2:00
Seventh Race — 1:16 Mile, Time: 1:14	Quintella (2-3)	11:20	2:00
Eighth Race — 1:16 Mile, Time: 1:14	Quintella (2-3)	11:20	2:00
Ninth Race — 1:16 Mile, Time: 1:14	Quintella (2-3)	11:20	2:00
Tenth Race — 1:16 Mile, Time: 1:14	Quintella (2-3)	11:20	2:00
Eleventh Race — 1:16 Mile, Time: 1:14	Quintella (2-3)	11:20	2:00
Twelfth Race — 1:16 Mile, Time: 1:14	Quintella (2-3)	11:20	2:00
Thirteenth Race — 1:16 Mile, Time: 1:14	Quintella (2-3)	11:20	2:00
Fourteenth Race — 1:16 Mile, Time: 1:14	Quintella (2-3)	11:20	2:00
Fifteenth Race — 1:16 Mile, Time: 1:14	Quintella (2-3)	11:20	2:00

**400 CALORIES**

Nutritionists have found through research that a good breakfast is the key to any successful weight reduction plan. If you skip breakfast you are more apt to resort to between-meal snacks which add calories or you are apt to over-eat at the other two meals of the day.

A series of experiments at a prominent medical school of a large university have demonstrated that just skipping or skipping breakfast will not cause a loss in weight if the total daily calorie intake remains constant.

Scientific research on the effects of starting each day with a breakfast that provides one-fourth to one-third of the day's food needs highlights these benefits. You'll feel better, you'll work better, you'll be quicker in the late morning hours if you start the day with a basic breakfast. Doctors and dietitians recommend a basic breakfast pattern of fruit, cereal, milk, bread and butter.

A basic breakfast pattern not only is easy to follow but is thrifty, efficient, appetizing, and adaptable. It is ideal for a reducing diet. For example, a 400-calorie basic breakfast provides 15 of a 1200-calorie diet. The pattern remains constant but variety is easy—simply use a different fruit, cereal, and bread. There are more than two dozen varieties of breakfast cereals available at your grocer, including both hot and ready-to-eat varieties.

**400-Calorie Basic Breakfast**

- Orange Juice (4 ounces)
- Ready-to-eat Oat Cereal (1 ounce) with Skim Milk (4 ounces)
- Whole Wheat Toast (1 slice)
- Butter (1 teaspoon)
- Soft Cooked Egg
- Skim Milk to Drink (4 ounces)
- Coffee

YOU CAN WATCH THAT PILE OF BILLS GO DOWN IN *Nothing Flat*

**A CONSOLIDATION LOAN DOES THE TRICK**

Loans up to \$500

**G.A.C. FINANCE CORPORATION**

111 West First Street  
Sanford, Florida  
Telephone 1150

**LOCH ARBOR**

Parade of Plans No. 3

5 OR MORE CITRUS TREES ON EACH LOT!

- Diversified plans; varied exteriors; large lots
- GI Financing
- Conventional Financing
- Carrying costs less than rent
- No City taxes... all city conveniences, including:
  - Mall delivery
  - Community water system
  - Streets paved and curbed
- Colored kitchen appliances
- Moulded Formica sink tops
- Colored Plumbing fixtures
- Wife-saver rainbow kitchen by

**GENERAL ELECTRIC**

- GE 10 cu. ft. refrigerator
- GE large size range
- GE 66-gal water heater
- GE garbage disposal
- GE Automatic dishwasher in deluxe 2-bath homes
- GE automatic washing machine in deluxe 2-bath homes
- Also: Kitchen ventilator

**Not A Project!**

Wellborn C. Phillips Jr. SALES OFFICE: Little Venice

Since 1949 Sanford's Leading Builder  
**TELEPHONE 1504**



**Bowling News**

Boys	6	1033	178
Harwick	27	14894	171.17
	27	4537	108.1
	27	14377	107.25
Boys	15	2155	325.7
Peasid	24	13854	164.9
Boydort	27	4437	104.4
Boydort	25	4104	104.4
Heckenbach	81	12306	163.3
Cook	87	14127	162.33
Baker	78	12615	162.15
Gilstrap	85	13359	159.38
Herber	84	12288	158.16
Herber	79	12433	157.28
Burnett	78	12121	155.41
Biel	78	12127	155.37
Kretzer	83	12907	154.35
Prive	87	13422	154.24
C. Richards	87	13390	154.1
Rugenstein	59	9048	153.22
May	76	11648	153.22
Fuhn	45	6840	152.45
Oversstreet	82	12895	151.13
Kirshoff	83	12533	151.1
Ray	74	11145	150.46
Hubbard	72	10787	149.29
Tra	78	11063	148.40
Walton	28	5037	148.33
Warro	83	12287	147.06
Burnett	78	11396	147.33
Daly	87	12820	147.31
Marro	23	3325	144.13
Lelis	13	2158	143.13
Perry	84	13023	143.11
Warwick	60	9555	138.33
Stutsky	82	11287	137.33

**City Bowling Loop**

STANDING	W L T P.
Tommy's Rad. Shop	51 36 67559
N. Y. Life Ins. Co.	50 37 67377
Burnett Painters	45 42 66483
City Print Co.	41 46 61442
City Music Shop	37 50 63950
Tommy's Rad. Shop	37 50 64418
N. Y. Life Ins. Co.	0 Tommy's
Radiator Shop, 3	
Mathers Furniture Co.	3 Celery
City Print Co.	0
Burnett Painters, 1	Bukurs Music
Shop 3	
<b>TEAM HIGH THREE GAMES</b>	
Tommy's Radiator Shop	2523
Mathers Furniture Co.	2432
Bukurs Music Shop	2402
New York Life Ins. Co.	2381
Celery City Print Co.	2252
Burnett Painters	2219
<b>TEAM HIGH SINGLE GAMES</b>	
Bukurs Music Shop	850
Tommy's Radiator Shop	849
Mathers Furniture Co.	847
New York Life Ins. Co.	841
Burnett Painters	778
Celery City Print Co.	752
<b>INDIV. HIGH THREE GAMES</b>	
Tom Brown	566
Ed. Kirshoff	54
Bill Tyre	540
Hal Gilstrap	535
Pete Bukur	528
Pick Richards	526
Paul Pezold	519
Frank Huhn	518
Carl Vonherbulla	405
<b>INDIV. HIGH SINGLE GAMES</b>	
Bill Tyre	212
Tommy Brown	200
Ed. Kirshoff	194
Pick Richards	194
Harold Gilstrap	192
Joek Hay	191
Carl Vonherbulla	187
Paul Pezold	185
George Kenis	185
Burnett Painters vs. New York	
Life Insurance Co.	
Bukurs Music Shop vs. Mathers	
Furniture Co.	
Tommy's Radiator Shop vs. Celery	
City Print Co.	

**Audit Is Critical Of Fiscal Records**

TALLAHASSEE (AP)—A state audit was highly critical Thursday of the fiscal records of the Board of Commissioners of the West Coast Inland Navigation District. The board's headquarters is at Bradenton.

The audit report, prepared by Doyle Pitts of the state auditor's staff, said financial statements of the board were not published as required by law, records were not currently posted, expenditures were not classified on the books for the last three months of the audit period, and the books did not reflect interest earned and credited by banks on time deposits.

The report also said the board had made no remittances to the state and county officers and employees retirement system since August 1954, and had not remitted withholding taxes since December 1954.

The report said the navigation district had a \$504,017 cash balance at the close of the fiscal year, ended Sept. 30, 1955.

Jose Aguiro of Tulane is ranked in the 1951 national collegiate tennis rankings.

**Sanford Accordion School**



**OPENS Friday — March 23**

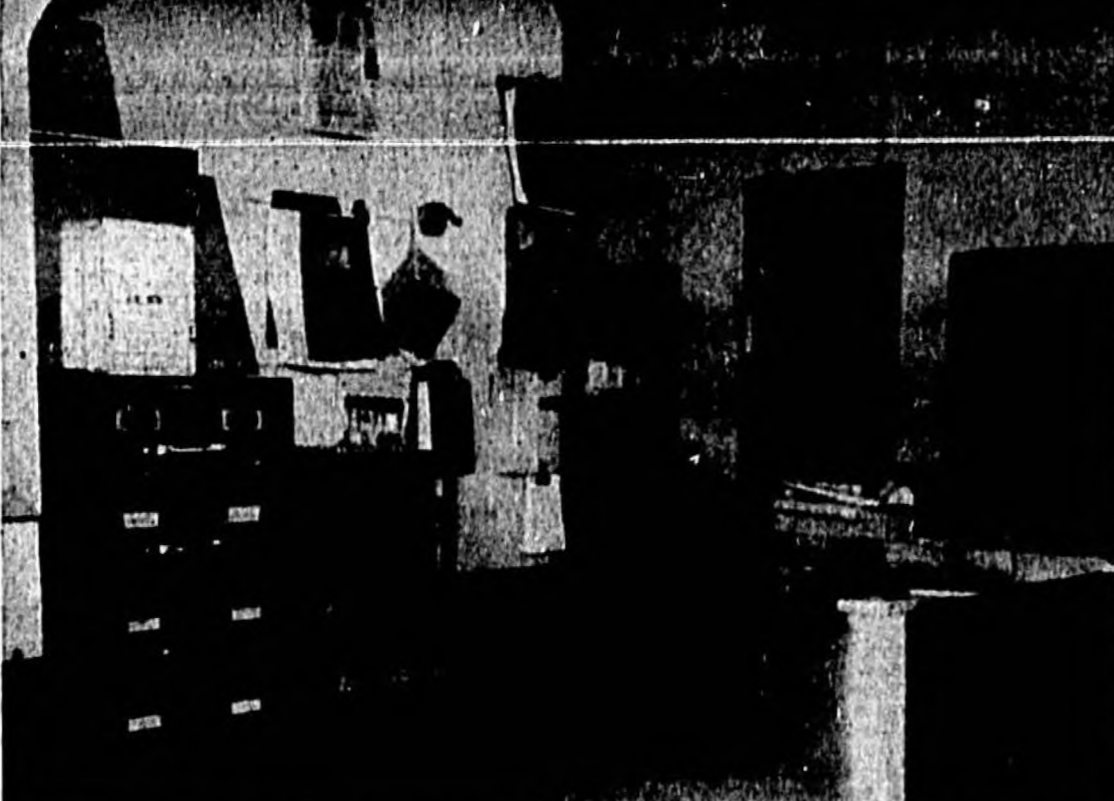
Wm. Smaral  
 Orlando 2-3758



**BUSINESS EXECUTIVES AND CIVIC** leaders meet regularly as the Board of Directors of the Seminole Chamber of Commerce strives diligently to keep progress on the move. Those shown are: (left to right front) James A. Wright, B. B. Crumley, B. L. Perkins Jr., Andrew Carraway, Frank Evans, John Ivey, and George Touhy, president. (back row) A. L. Wilson, T. E. Tucker, Willis Peacock, Fort Breckenridge, manager, Wally Dietrich, Clifford McKibbin, W. H. "Bill" Stemmer, and John Melsch. (Photo By Jameson)



Sanford Yacht Basin under construction. (Staff Photo)



New switchboard located at the Sanford Police Department. (Staff Photo)

**TOMORROW**  
**SATURDAY MARCH 31, IS THE LAST DAY**  
**To FILE YOUR 1956 APPLICATION**  
**FOR HOMESTEAD EXEMPTION**  
**AND PERSONAL PROPERTY RETURNS!**  
**MARCH 31st IS THE LAST DAY!**

TAX LAWS PROVIDE SEVERE PENALTIES FOR FAILURE TO FILE RETURNS ON TANGIBLE AND INTANGIBLE PERSONAL PROPERTY.

HOMESTEAD EXEMPTION CANNOT BE GRANTED UNLESS APPLICATION IS FILED WITHIN THE PRESCRIBED TIME.

Blanks have been mailed to all who filed application or made returns last year. If you failed to receive yours please call for them at the Tax Assessor's Office.

When applying for Homestead Exemption for the first time, please bring your deed with you. Also your 1956 automobile tag number. If you need help with your returns, I shall be glad to assist you.

IT IS NOT NECESSARY TO FILE APPLICATION FOR HOMESTEAD EXEMPTION AT THE CITY HALL, BUT IF YOU ARE ENTITLED TO WIDOWS EXEMPTION OR DISABILITY EXEMPTION, APPLICATION FOR THESE SHOULD BE FILED WITH THE CITY.

**SANFORD F. DOUDNEY**  
 TAX ASSESSOR

**Cellulose Corp. Plans To Double Mill Production**

FERRY (AP)—Buckeye Cellulose Corp. plans to double production at its mill in nearby Foley by building a 20 million dollar addition.

The plans were announced Wednesday by Paul K. Honey, vice president, at a dinner meeting of the Ferry-Taylor County Chamber of Commerce.

Construction will start in November and completion is expected in 1958, he said.

The expanded plant will employ 285 new workers in addition to the present force of 370.

The existing mill, which cost 25 million dollars, has an annual payroll of three million dollars and spends about five millions each year in this area for pulpwood, other supplies, fire protection and taxes. Honey said the expansion will increase annual expenditures to nearly 15 million.

The expansion will enable the mill to increase its annual production to 240,000 tons of high grade cellulose pulp, used for making a wide variety of products including plastics and photographic film.

**Guard Baby's Eyes Now To Avoid Trouble Later**

By NERMAN H. DUNNEN, M.D.

YOU can and should protect your youngster's vision right from the start.

A baby's eyes begin functioning immediately after birth, although for the first six weeks or so he can only distinguish between light and dark.

**Will See Objects**  
 At about the age of six weeks, he'll be able to see objects and when he reaches two months he'll be able to fix his eyes on them. Usually it takes another month before he can follow moving objects with his eyes.

Even then, his eyes don't work well together and he may appear cross-eyed when he looks at an object until he reaches the age of nine months.

**Crossed Eyes**  
 During infancy, be careful not to move objects close to his eyes. It may make him smile, but it will also cause him discomfort by forcing him to turn his eyes inward to see. Doing this too often could contribute to crossed eyes.

**Direct Sunlight**  
 When sunning the baby, or wheeling him about in his buggy, be sure you don't let the direct sunlight shine in his eyes. Don't

let him look directly at the sun, either.

You should shield his eyes from glaring lights indoors, too.

As the youngster grows older, there are a few other rules you should follow to protect his vision.

**Large Print**  
 Make sure all his books and games have large print, and see that he has good light for all indoor activities. Outdoor play helps distant vision. Encourage him.

Don't let him develop poor posture habits such as tilting his head when he reads or plays a game, turning one eye closer to an object he is viewing, holding books or games too close to his eyes, and reading while lying with his chin in his hands supported by his elbows.

Following these few suggestions may prevent eye trouble later on.

Before he enters school, see that he has a complete eye examination. If he gives any hint of special problems, he should have one much earlier.

**QUESTION AND ANSWER**  
 Q. F. Is it possible to cure hemorrhoids without surgery?  
 Answer: In certain cases of hemorrhoids, it is possible to get good results by the injection method of treatment.

**SEMINOLE COUNTY CHECKERBOARD NEWS SIMPSON FARM SUPPLY**

**THEY'LL GO FOR REAL LIVE RABBITS ON EASTER**  
 Many have asked if we are planning to sell Easter bunnies this year. We are! They make wonderful pets for small children. Order yours before the supply is exhausted. We'll hold until Easter. Be sure to get plenty of Purina Rabbit Chow, it's America's favorite.

**EASTER CHICKS**  
 They'll also love the little colored Easter Chicks. Come by and see—you can't resist them.

**DON'T CHEAT YOUR PULLETS BECAUSE THEY'LL CHEAT YOU**  
 To make long profits from the laying flock most of us agree that a good quality chick is a must. Many also agree that the best start possible is none too good, but many put the birds on so-called cheaper feeds after four or five weeks.

We said "so-called" because lost production often makes the "cheap" feed cost more in the long run. That's why we've urged you to start and grow birds all the way on the Purina plan that's right for you. We have a complete feed plan, one that takes a little grain and another that uses a lot of home-grown grain.

Our goal is to help you grow your flock out right at the lowest possible cost. For the man with no grain we suggest old reliable Purina Growena be fed from 4 or 5 weeks to 10 weeks. Growena gives fast growth and helps build a big frame fast. At 10 weeks switch to Purina Pullet Developer, a lower cost feed, which will adequately nourish and build birds until they start to lay. Did you know that 3/4 of all a bird eats is consumed between 10 weeks and the time she begins to lay. Ask about the plan that's right for you

**Pamper Baby Calves**  
 a Little For Best Results Says Purina

Dairy book suggest that calves be kept in individual pens for the first 10 days, then moved into larger pens with calves their own size. Individual pens should be at least 4 feet square. Calves in group pens each need 25 square feet. Don't tie calves. Let calf suck for 3 days to get first colostrum milk which will help regulate digestive system. On the fourth day take away all milk and feed Purina Nursing Chow gruel. For best results be sure calf stretches her neck to drink. Place bucket about a foot above the floor and tilt toward calf. Place dry Calf Startena before calf, too. Feed Nursing Chow for four weeks, then quit. Self-feed Calf Startena from 4 days to 4 months. Keep block salt and water before calves. Start feeding bright leafy hay when calves are two months old.

**Directions for Orphan Pigs**  
 Feed Purina Nursing Chow dry for one week, then supplement it with Baby Pig Chow. Feed both Nursing Chow and Baby Pig Chow for 2 more weeks, then Baby Pig Chow alone until switching to Pig Startena at 6 weeks. Then feed Pig Startena until orphans are 9 weeks old. After that they can be handled like sow-raised pigs.

**Lice Can Eat Profits**  
 Better check your birds to see if lice are hiding close to the skin. Lice can eat holes in your profits. Knock 'em dead with Purina Poultry Insecticide. Paint on roosts, fumes rise and kill lice. Cost is small, too.

**TONIGHT — 7:30 P. M.**  
 Don't forget the extra special film we're showing tonight—F. F. A. Building behind the high school—We'll be looking for you.  
**SIMPSON FARM SUPPLY**  
 Sanford, Fla.  
 116 W. 2nd St.

**RITZ Theatre**  
 AIR CONDITIONED

Hurry! Last Day  
 Hurry!

THE MAN WHO NEVER WAS  
 WEBB GRAHAME

**SATURDAY ONLY**

ON THE STAGE!  
 THE STARS OF YESTERYEAR

**GAY NINETIES REVUE**

8 BIG ACTS

ALSO ON THE SCREEN

IT'S A DOG'S LIFE

JEFF RICHARDS - JARMA LEWIS - EDMUND GWEEN  
 DEAN JAGGER - WOLDFINE

ADM. MATINEE NIGHT  
 ADULTS .85c .60c  
 STUDENTS .50c .60c  
 CHILD .25c .25c

**STARTS SUNDAY FOR YOUR EASTER PLEASURE**

**THE MAN**  
 with the might to conquer the world!

**THE WOMAN**  
 with the lips to conquer the man!

HOWARD HUGHES  
**THE CONQUEROR**

FEATURES: 1:00 — 3:10 — 5:20 — 7:30 — 9:40



# Sanford Faced With Blessings, Problems Of Rapid Expansion

Sanford, similar to many Florida communities, is being confronted with the blessings and problems of rapid expansion. This is being met with a program of expansion which is being met with a program of expansion which is being met with a program of expansion...

Construction on a \$1,450,000 water and sewer program was begun in February, 1954, and completed in November of 1955. The engineering firm of Robert M. Angus & Associates of Jacksonville, was retained for the design of the overall project. The work was actually divided into three sections.

The first section was 22.3 miles of vitrified clay sanitary sewers ranging in size from eight inch laterals to 36 inch trunk lines. This provides the city with nearly 10 miles of sanitary sewers and approximately 80 per cent coverage of the total city area. The cost of this section of new installation was \$7,175,000. Included was a pneumatic ejector lift station, with one 1,000 gpm and one 300 gpm pumps, and a final lift station with two 1,000 gpm pumps.

Outstanding in this section was the design of a straight flow comminution pit with a Wrothington half street comminutor to shred large solid objects prior to the final lift stage. From this point, disposal is made through 1,320 feet of 18-inch asphalt coated asbestos bonded metal outfall line under the bottom of Lake Monroe to a discharge point into the channel and eight feet of water. This method eliminates twelve outfalls that were used to discharge sewerage at the lake front.

The second section of the program was a storm water sewer to encase Pump Branch Creek in 2,500 feet of Armo corrugated metal pipe. This system utilized pipe from 60-inch to 96-inch and some 72-inch by 44-inch pipe arch with corrugated pipe manholes. This section of the project eliminated a very unhealthy and noxious condition that existed in a colored residential area of Sanford. The cost was \$120,000.

The final section of the water and sewer program dealt with water improvements to correct the inadequate service due to rapid expansion. The work included laying four miles of six to 10-inch cast iron mains, installation of 23 new hydrants, erection of a new 200,000-gallon elevated storage tank, a new eight-inch well, new pumps for all eight wells in the supply system, and the construction of a new aerator at the water plant. The total cost of the water improvements was \$155,000.

February 1 of this year saw the opening of a new 75 bed hospital. Occupying a two city block area, the three story, concrete and brick structure is diagonally across the street from the New York Giants' Mayfair Inn and overlooking Lake Monroe. The \$1,250,000 hospital is one of the most modern in the south in facilities to care for an expanded patient load when additional beds of increasing number are needed.

Municipal expansion always brings traffic problems with it. Sanford's through traffic will be handled by a new six-lane highway constructed by the state and dedicated March 9. Fifteen months in construction, the 2.56 miles were constructed at a cost of \$700,000.

The intra city traffic flow has also been improved through a Street Rehabilitation plan. 1953 saw 3.3 miles of asphaltic concrete resurfacing and another 3.1 miles is scheduled for completion in March of this year. This is set up on a continuing program from annual appropriations.

Lack of parking facilities is not uncommon to many communities, and Sanford is no exception. Passage of an off-street parking ordinance and the construction of a free municipal parking area are two of the steps the City is taking to relieve this problem. April of this year will see the completion of a 250 space parking lot within one block of First St. and the center of the shopping area. The entire project is being undertaken by city funds.

Sanford's Police Department headed by Chief Roy Williams, with 35 years service is presently handling our many traffic situations. The department, employing 16 men, has been modernized with patrol cars, motorcycle, photographic and fingerprinting equipment, plus a new 30 station capacity telephone call box system recently leased from the Southern Bell Telephone and Telegraph Company.

Reclaiming land as well as furnishing modern disposal methods, a sanitary landfill was started in June, 1953. Located near the commercial zone, the area type landfill is operated by one international TD-14 tractor with a Drott Bulldozer attachment. The site has been used in national advertisements and as an example for other municipalities in Florida and Georgia, as well as by the State Health Department. Use of the landfill method has reduced disposal cost from \$1.23 per ton by the old incinerator method to 60.3c per ton, plus the increase of more frequent pickup services to the public. As a result of this program, a new business has been constructed on what was originally waste land.

Fire services are also being stretched to meet the increased demand under Chief Cleveland, also with 35 years service, is presently doing a magnificent job under trying circumstances. Plans are now being discussed for the location of a sub-station in a more central area and outside of the congested business district.

Recreation facilities are items that must not be overlooked in municipal growth. 1952 saw major projects completed. The Sanford Municipal Stadium designed by the late Elton Moughton, architect, was constructed at a cost of \$185,000. The stadium seats 2,000 with an additional 1,000 in bleachers. Considered one of the finest and best lighted Class D baseball fields in Florida, the stadium is also converted to a football field in the fall and winter. It is here that the Minneapolis Millers and the Rich-

## Lake Mary

BY VIRGINIA P. ANDERSON

Recently, Mr. and Mrs. H. M. Gleason and their guests, Mr. and Mrs. E. M. Church, of Liberty, Fla., were the guests of honor at a luncheon held in Winter Haven.

Sunday afternoon, March 18, the Church of the Nazarene was host to a union service. Taking part were the host church, the Nazarene Church of Sanford, Free Methodist of Sanford and the Wesleyan Methodist of Paola. The meeting was marked by special music, the Wesleyan contributing two duets, the Lake Mary quartet and the Rev. Robert Spear of Sanford closed with the solo, "The Ninety and Nine."

Mrs. Lucinda Brown of Inlay City, Mich., has arrived to visit her son and daughter-in-law, Major and Mrs. Roy Brown.

Friends of William Struthers of Cornwall, N. Y. will be sorry to learn of his death on March 18 following an attack of pneumonia. While living in Lake Mary both he and Mrs. Struthers were very active in the Community Church, where he was an elder and treasurer. Mr. Struthers was owner and operator of the Lake Mary Water Works for several years.

Mr. and Mrs. R. E. Wells and children left for her parents home in Mt. Blanchard, O. where she will remain while he is overseas.

Friends of Commander and Mrs. Fred A. Ballard, of Alexandria, Va., will be interested to learn that recently he was made Captain in the Naval Reserve. The ceremony of awarding the new collar eges took place at a dance at the Anacostia, D. C. Air Station. It will be remembered that Captain Ballard was the first Operations Officer when the Sanford Naval Air Station was commissioned in 1942 and was later second Executive Officer of the Station. The Ballards and their two daughters, Sally and Molly lived in what is now the A. N. Scott house.

Mr. and Mrs. C. W. Sjolom spent Sunday with their son-in-law and daughter, Mr. and Mrs. Otis Gasser and son in Green Cove Springs where he is attached to the Naval installation.

Mrs. John Salisbury is visiting her parents, Mr. and Mrs. R. H. Eubank, Sgt. Salisbury has been transferred to MacDill Field, Tampa and she will join him there shortly.

Phillip Toney has returned to Atlanta, Ga. where he is a student at Georgia Tech. He is studying under the work-study plan whereby he divides his time

between class room work and practical field application.

Mrs. Ruth Buckstaff of Cleveland, O. is visiting her brother-in-law and sister, Mr. and Mrs. Earl Toney. This is her first trip to Florida and she is much interested in the state and its beauty.

Mr. and Mrs. Roy L. Howell spent the weekend visiting their son, Mr. and Mrs. Jack Howell and two children in Jacksonville and Mr. and Mrs. Roy L. Howell Jr. and some Milton and Stanley in Waycross, Ga.

Miss Mary Ann Bohleyer of Jacksonville was called home by the serious illness of her father, the late Walter Bohleyer. She will remain here with her mother, until after Easter.

Mrs. Harmon Dufur of Houston, Tex., is visiting her father, R. E. Franklin.

Mr. and Mrs. A. F. Kemp were in Jacksonville, Sunday afternoon, visiting relatives.

Mr. and Mrs. H. V. Chance have purchased the Siebert house. He is currently attached to the Sanford NAAS.

Mr. and Mrs. George R. Patterson of Winter Park were in town, Monday, calling on their friends.

Bobby Taylor, US Air Force spent the weekend with his grandmother, Mrs. W. A. Lowe, returning to his duty station in Albany, Ga. He was just back from special schooling which had taken him to California and Nevada.

Mr. and Mrs. E. M. Church, houseguests of Mr. and Mrs. H. M. Gleason were honored with a dinner, last Sunday given by Mr. and Mrs. J. L. Hobby of Sanford. It was in the nature of a farewell to their home in Liberty, N. Y. shortly. Enjoying the dinner with the honor guests were Mr. and Mrs. H. M. Gleason, Mr. and Mrs. Richard Keogh and sons, Craig, Keith and Colin, Miss Lucille Nera and Miss Mary Grace Hobby.

The Friendship Class of the Community Church held its regular monthly meeting, March 20, at the home of Mr. and Mrs. Joe Smathers on Lake Emma. They enjoyed a fire in the big fireplace in the split level house of the Smathers which is nearing completion. Mr. Smathers, president of the organization presided. It was agreed that a hamburger fry will be held in the church yard, April 6. If this is a success, the class will sponsor a get together, monthly. It was reported that the TV set the group purchased for the use of community shut-ins was idle at present. A committee consisting of Mrs. L. W. Scott, Mrs. Ellen Willard, Mrs. Smathers and R. W. Keogh was appointed to get

## Longwood News

BY MRS. RUTH LATO

Mr. and Mrs. Arthur Thompson and Mr. and Mrs. John Palmer and daughter, Carol, have returned from a visit to Sebring, spent with relatives, Mr. and Mrs. Carl Johnson, the former is a brother of Mrs. Thompson.

Miss Mary Glasgow, wife of J. D. Burgess and family, who have been spending the last two months at their home here have returned to Connecticut.

John H. Seary flew to New York City the past week to attend the Radar Annual Convention of the Institute Radar Engineers. Seary is connected with radiation in Melbourne.

Mr. and Mrs. R. Cole of Exeter, Ontario, Can., who have been recent guests of Mr. and Mrs. C. L. Robertson at their home on Maine Street have returned to their home.

Mr. and Mrs. John Dolan of Orlando were Sunday guests of the latter's brother, James McGraw and family.

Mrs. G. Case of Fort Colburn, Mrs. D. Hawkins, Welland, and

## THE SANFORD HERALD

Fri., March 30, 1956, Page 9

Mrs. E. Gordon of Hamilton, Ont., who was spending a vacation in Florida, was recent guest of Mr. and Mrs. C. L. Robertson.

Carl Craig of Cleveland, O., is visiting his sister, Miss Williams, of Lake St.

Mr. and Mrs. Fred Blumhardt of Wilton, Me., are visiting their son, Pete Blumhardt and family on Wildmore Ave.

Mrs. Clarence Snow, who was a patient in the Sumbulo Memorial Hospital, returned home Tuesday and is greatly improved. Miss Virginia Ellis, who has been the guest of Mr. and Mrs. Howard Warren of Molnar Street for the past several months, will return to her home in Rockport, Me., by plane today.

Mr. and Mrs. Smith Davis of White Plains, Ky., are spending a few days in Longwood.

Mr. and Mrs. Ernie Bahro and children, who have been spending two weeks with Mrs. Bill Almy and Mr. and Mrs. William Kalam, have left to return to their home in Syracuse, N. Y.

Mrs. Verne Wellman and sister, Mrs. D. Tutts, of Farmington, Me., and Hollywood, were recent visitors at the home of Mrs. Selma Larcom and other old neighbors on Maine St.

Mr. and Mrs. M. B. Brocard enjoyed a trip to Daytona Beach with Mr. and Mrs. Guy Campbell of Maitland on Friday.

Mrs. Cassie Malters, her daughter and family who have been spending the winter in town, enjoyed a trip recently to Longwood.

Longwood residents extend their sympathy to Mr. and Mrs. Ray Fraser, who have recently suffered the loss of Mr. Fraser's mother.

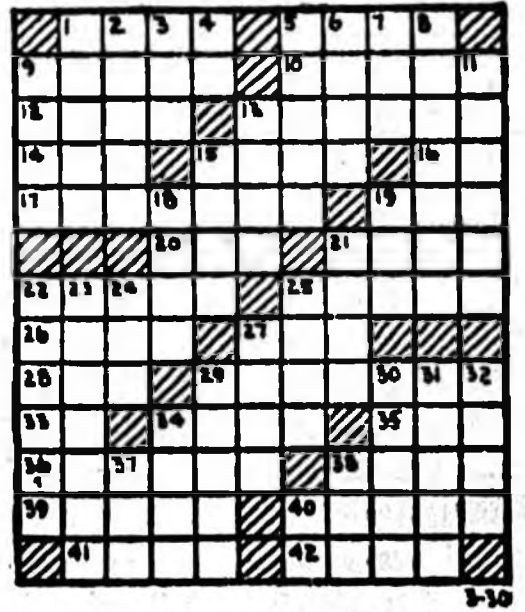
### DAILY CROSSWORD

ACROSS

1. Mature
2. Fire for roasting meat
3. An ineffective agent
4. East by south (abbr.)
5. Tip
6. Football kick
7. India (post.)
8. A tea shop
9. Franchise
10. Half-moons
11. Elliptical
12. Little child
13. Hun
14. Depression in early school
15. Sun god
16. Constituent
17. Light bed
18. Perform
19. Foot covering
20. Edge
21. Injure
22. Important food of Cune
23. Variant of "A" (Bib.)
24. Frozen water
25. City (Calif.)
26. Exclamation
27. Extinct bird (N. E.)
28. Inherent character
29. Old coin (Gr.)
30. Male duck
31. Fat
32. Lashed
33. Employ for wages

DOWN

1. A competitor
2. Sultan's decree
3. Parasol
4. Copper coin
5. A minuter
6. Heart
7. Franced
8. Lion
9. Heart
10. Frozen water
11. Manufacture
12. Distant
13. Chiefling
14. A shade of brown
15. Galloway rope
16. A valley
17. Author of "The 3rd Gospel" (Bib.)
18. Chiefling
19. Indo-China
20. Sash (Jap.)
21. Cry of pain



### THE BLACK HILLS PASSION PLAY

8:00 P.M. - 10:00 P.M.

LAKE WALES

### DON'T

Throw Away Your Tire Dollars Because Your Tires Are Smooth. Let WELSH TIRE SHOP 105 W. 2nd Put On New Truck Rubber Treads That Will Give Guaranteed NEW TIRE Wear And Save Your Money.

WELSH TIRE SHOP 105 W. 2nd  
30 YEARS IN SANFORD



MRS. ANNE WILKINS, 64, who calls herself "the hat of the saddle tramp," is shown in North Hollywood, Calif., after completing a 5,900-mile horseback trip from Maine. It took Mrs. Wilkins 520 days. Her dog, Patsche Tol, accompanied her on the trip. (International)



The "Christ Figure", first of a series of religious features depicting the life of Christ.

## OAKLAWN MEMORIAL PARK

Perpetual Care Room 224 Metch Building Phone 1600

Cliff Ables, Sales Manager

Solon Teston, Superintendent  
T. L. Johnson, Superintendent

## Reverence

The crowning feature of the mall is the beautifully carved figure of Christ. Upon entering the park, one senses the feeling of reverence . . . like entering a great cathedral. It is this religious theme that pervades every inch of the lovely park . . . that makes it so attractive to those who hold that Christ and His teachings are the hope of the living . . . the reward of the dead.

You are cordially invited to visit the Park and inspect our first feature . . . a delightful ride out State Road 46A to Twin Lakes, 2 to 6 p.m. Sunday.

## Something to Crow About

IT'S TERRIFIC At a New LOW PRICE

### Gigantic Clearance on Firestone OUTBOARD MOTORS

10A71 3.6 HP	10A102 5 HP	10A104 10 HP
\$73.97	\$112.18	\$155.63
\$7.50 down \$1.50 week	\$11.50 down \$2.00 week	\$16.00 down \$3.00 week

EXCHANGE PRICES — WITHOUT EXCHANGE ADD \$15.00

TABLE RADIO	AUTO RADIOS	Boys Or Girls BICYCLES \$36.66
\$11.88	\$44.88	\$4.00 DOWN \$1.50 WEEK

DO YOU WANT A NEW GORGEOUS ELECTRIC RANGE? WE HAVE 2 WE ARE OFFERING AT GREATLY REDUCED PRICES THAT DEFY COMPETITION. COME IN—SEE THEM—EASY TERMS—DON'T WAIT

# Firestone

### LAST TIME TONIGHT STARTS 7:10

FEATURE: 7:10 — 10:10 PLUS SECOND FEATURE

### THE VIEW FROM POMPEY'S HEAD

CINEMASCOPE

RICHARD IDAN  
DANA WINNER  
CAMERON MITCHELL

ALSO

### CINEMASCOPE

3 Coins in the Fountain

PETER JONAS



TELEVISION

Utility Groups Endorse Plan

WASHINGTON (AP)—Alabama and Georgia utility commissions have endorsed the plan of the Frisco Railroad Co. to control the Central of Georgia Railway through majority ownership of its capital stock.

At the same time, the Chicago & Eastern Illinois Railroad advised the Interstate Commerce Commission (ICC) that it had long maintained connections with the southeast via Frisco and Georgia Central trackage. It expressed the view that Frisco's proposal would improve service to and from that area.

The Alabama Public Service Commission said in a statement filed with ICC that the plan would promote Alabama's industrial growth, improve transportation service in the southeast and "stabilize" management of Central. The Georgia Public Service Commission asserted the Frisco-Central association would be in

Helicopter Plunks Family Off Boulder

FT. BENNING, Ga. (AP)—An Army helicopter Wednesday plucked a Phenix City, Ala., couple, their baby and puppy from a boulder in the Chattahoochee River where they had been marooned by a three-foot rise in the river.

Rescued were Mr. and Mrs. Doyl Lucas Jr., 19-month-old Linda Jane Lucas and the family pup. They had ventured out 200 yards from the Alabama shore at a point opposite the Bibb Manufacturing Co. when the rising water trapped them on the boulder.

The rescue was made by an Air rescue team of the 506th Helicopter Company at Ft. Benning 21 minutes after aid was requested by the Phenix City Police Dept.

WARD'S LONGWOOD HOTEL Halfway Between Sanford & Orlando One Mile From Dog Track Make Reservations Now For Easter Dinner—Apr. 1 Service from 12 noon 'til 8 PHONE W. P. 26-3251 PRIME RIBS OF BEEF—TURKEY—LAMB—HAM. Complete Dinners Closed on Mondays Catering to Parties & Banquets



Table of television programs including: 7:00 Spotlight on Sports, 7:30 Celebrity Playhouse, 8:00 Mama, 8:30 Life of Riley, 9:00 Crusaders, 9:30 Playhouse of the Stars, 10:00 Person to Person, 10:30 Newsmagazine, 11:00 Highway Patrol, 11:30 Sign-Off.

Table of radio programs including: 6:00 World at Six, 6:30 Market Report, 7:00 Sports Book, 7:30 Music at Random, 8:00 Drifting On Cloud, 8:30 Hosses For a Lady, 9:00 Dial M for Music, 9:30 Night Edition, 10:00 United Nations, 10:30 It's Dancetime, 11:00 Starlighters, 11:30 At Home With, 12:00 Laymen's Call to Prayer, 12:30 Sign Off.

Radio WWSB-TV 1460 S.W. 10th St. Sanford, Fla. 32701. Programs include: 6:00 World at Six, 6:30 Market Report, 7:00 Sports Book, 7:30 Music at Random, 8:00 Drifting On Cloud, 8:30 Hosses For a Lady, 9:00 Dial M for Music, 9:30 Night Edition, 10:00 United Nations, 10:30 It's Dancetime, 11:00 Starlighters, 11:30 At Home With, 12:00 Laymen's Call to Prayer, 12:30 Sign Off.

TOPS IN GREYHOUND RACING THRU APRIL 11 RAIN OR SHINE Dog Racing Nightly (except Sunday) 8:10 Matinees Wed. & Sat., 2 P. M. ONLY 10 MORE RACING DAYS SEASON CLOSSES APRIL 11 SORRY, NO MINORS SANFORD-ORLANDO Kennel Club HWY 17-92 - 8 Miles South Of Sanford Turn West At Red Arrow

State Wants School Killing Case Tried Soon As Possible BARTOW—The state wants to get the college killing case tried before witnesses from Florida Southern College go home for the summer. State Atty. Gunter Stephenson said he will seek an early trial for Clarke Gavin, 24, indicted for first degree murder in the shoot-

ing of Anthony (Eddie) McBride, 23. McBride, a student at Florida Southern, was shot in his apartment at Lakeland March 21. Police said Gavin, his chum, admitted the shooting but gave no reason. Gavin had been expelled a few days earlier because he shot still another student, Dick Blackwell, in the foot. Ever mix grapefruit juice (unsweetened) with apricot nectar?

Roll apple wedges in sugar and perch on top of muffin batter before baking. Orange rind and date strips added to a loaf of quick bread give it fine flavor.



Experienced -In- County Government Real Estate Values Real Estate Appraisals Needs of the Schools Needs of County Hospital Needs of County Roads YOUR VOTE AND SUPPORT APPRECIATED Pd. Political Adv.

General Insurance H. JAMES GUT AGENCY 112 EAST FIRST STREET PHONE 78 H. JAMES GUT JAMES B. GUT Assoc.

It's Spring TIME TO—PAINT UP FIX UP Finance those needed Home Repairs with a low-cost-FHA repair loan—No Down Payment— up to 36 months to repay. Your loan can cover both material and labor. You need not be a depositor to take advantage of this economical way to repair your home. An FHA Loan will pay for the following repairs and many others. Florida State Bank of Sanford MEMBER F. D. I. C.







WE'VE EVERYTHING FOR YOUR...

Two Weeks with Play!

YOWELL'S  
"Where To Go For The Names  
You Know"

- PALM BEACH
- ARROW
- HICKOK
- PHOENIX
- TOM SAWYER



- CARLYE
- NARDIS
- LEVINE

- GAY GIBSON
- MUNSINGWEAR
- STYLECRAFT BAGS

- L'AIGLON
- SURE SIZE SUITS
- JACK SQUIRE

- SHIRLEY LEE
- LIFE BRAS
- HANDMAKER SUITS

- HELEN WHITING
- WHITING AND DAVIS BAGS
- MARJAE OF MIAMI
- ALK OF MIAMI

- SUN SEEKER
- CANNON
- WESCO AND CLEMAH HATS

- BLOOMFIELD
- FOURELL
- LYNBROOK

- MAJESTIC
- VAN RAALTE
- SANS SOUCI

- MARTHA MANNING
- CIRILO
- GOSSARD

- PIECE GOODS
- BED LINENS
- TOWELS
- TABLE LINENS
- DRAPERY FABRICS

- BOTANY 500
- MCGREGOR
- STETSON
- JANTZEN
- MARK TWAIN

Toddler's Toys



Swim Suits  
By Jantzen  
And Brilliant  
Sportswear



Yowell's  
SANFORD

# The Sanford Herald

Section B

AN INDEPENDENT DAILY NEWSPAPER

VOLUME XLVIII

Established 1908

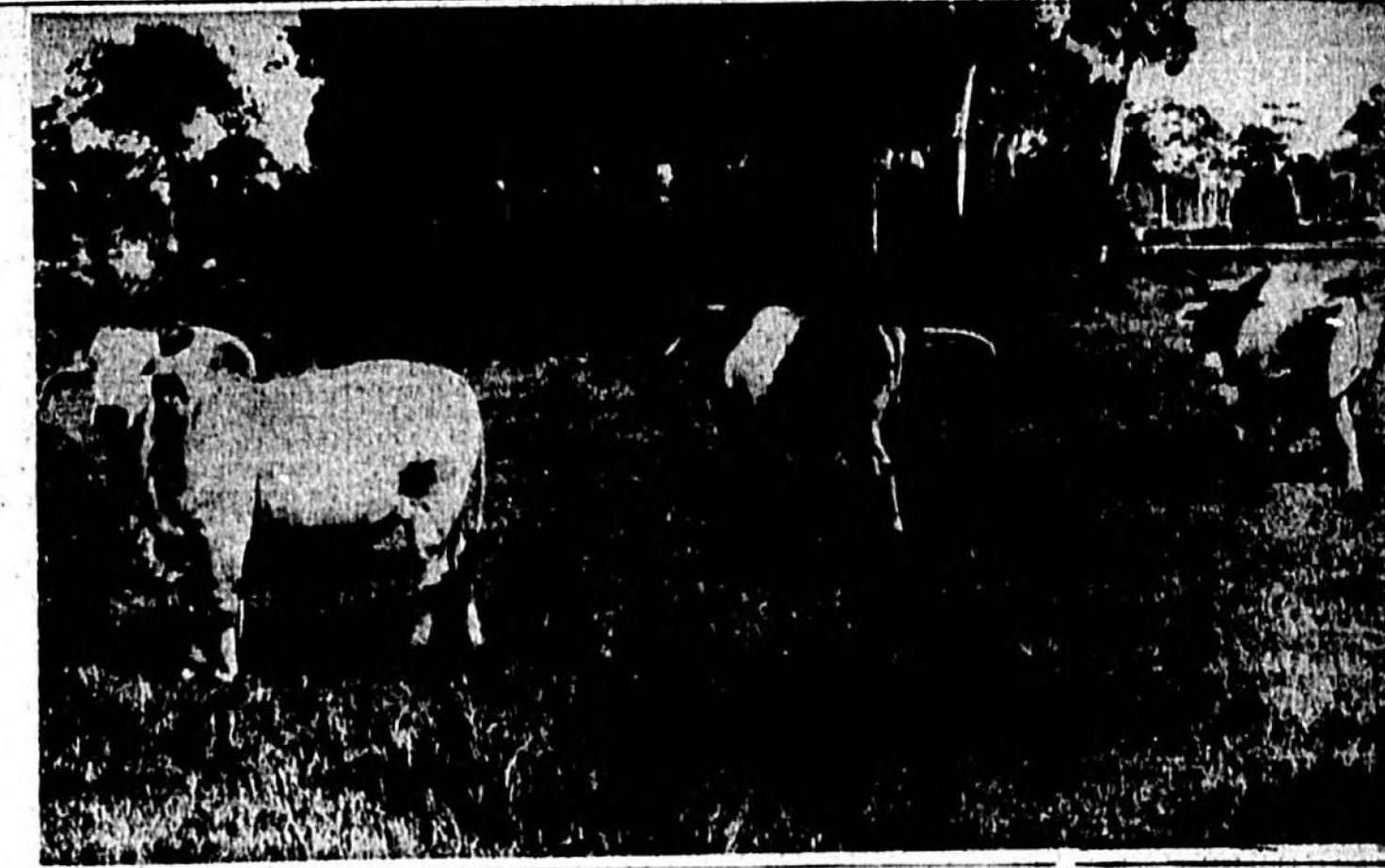
SANFORD, FLORIDA, MARCH, 1936

ANNUAL TOURS EDITION

## Without Doubt City Of Sanford, Seminole County, Growth Can Be Seen Through New Ideas, Many Improvements



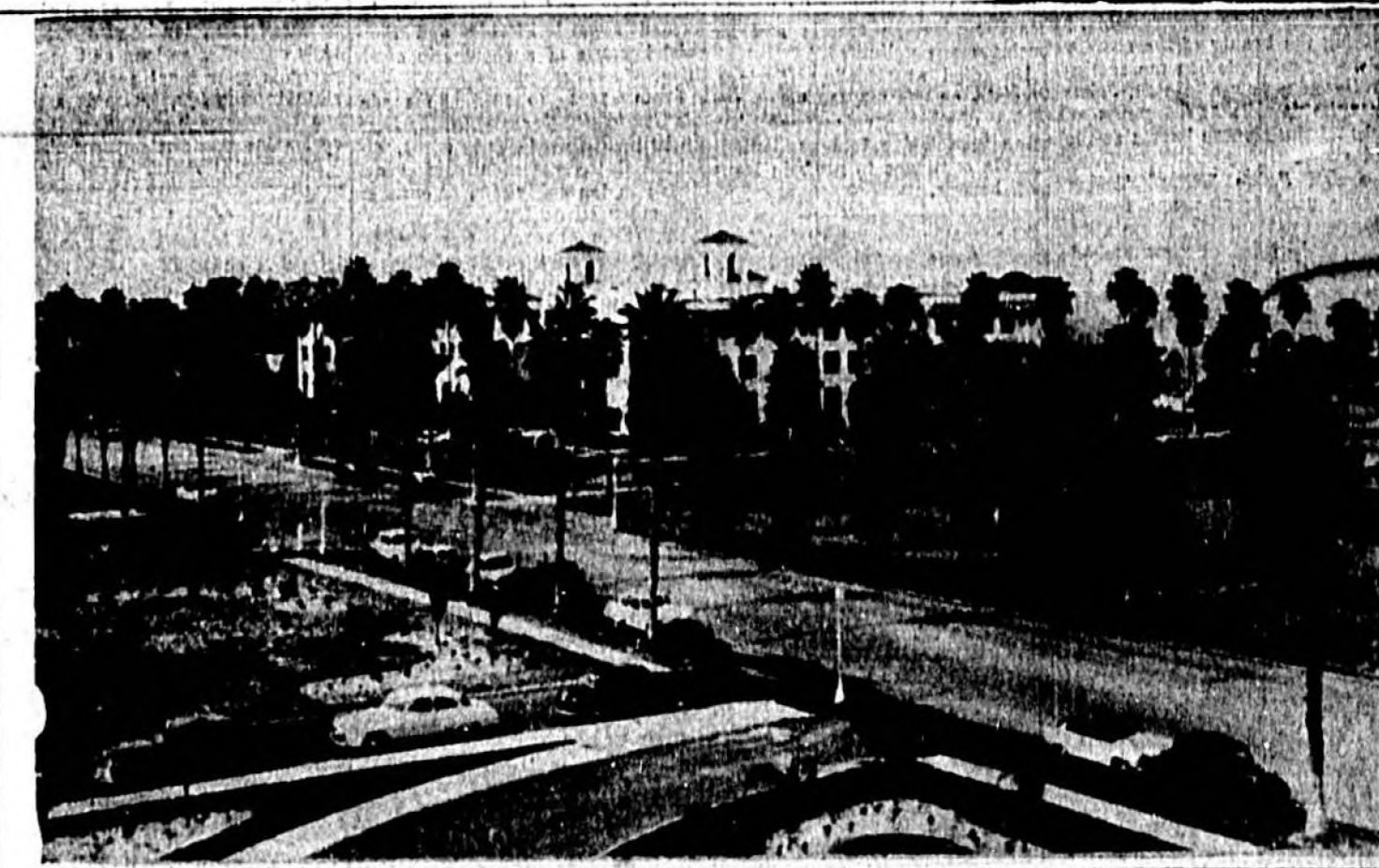
Palms frame Sanford's City Hall



Cattle roam Seminole County pasture lands



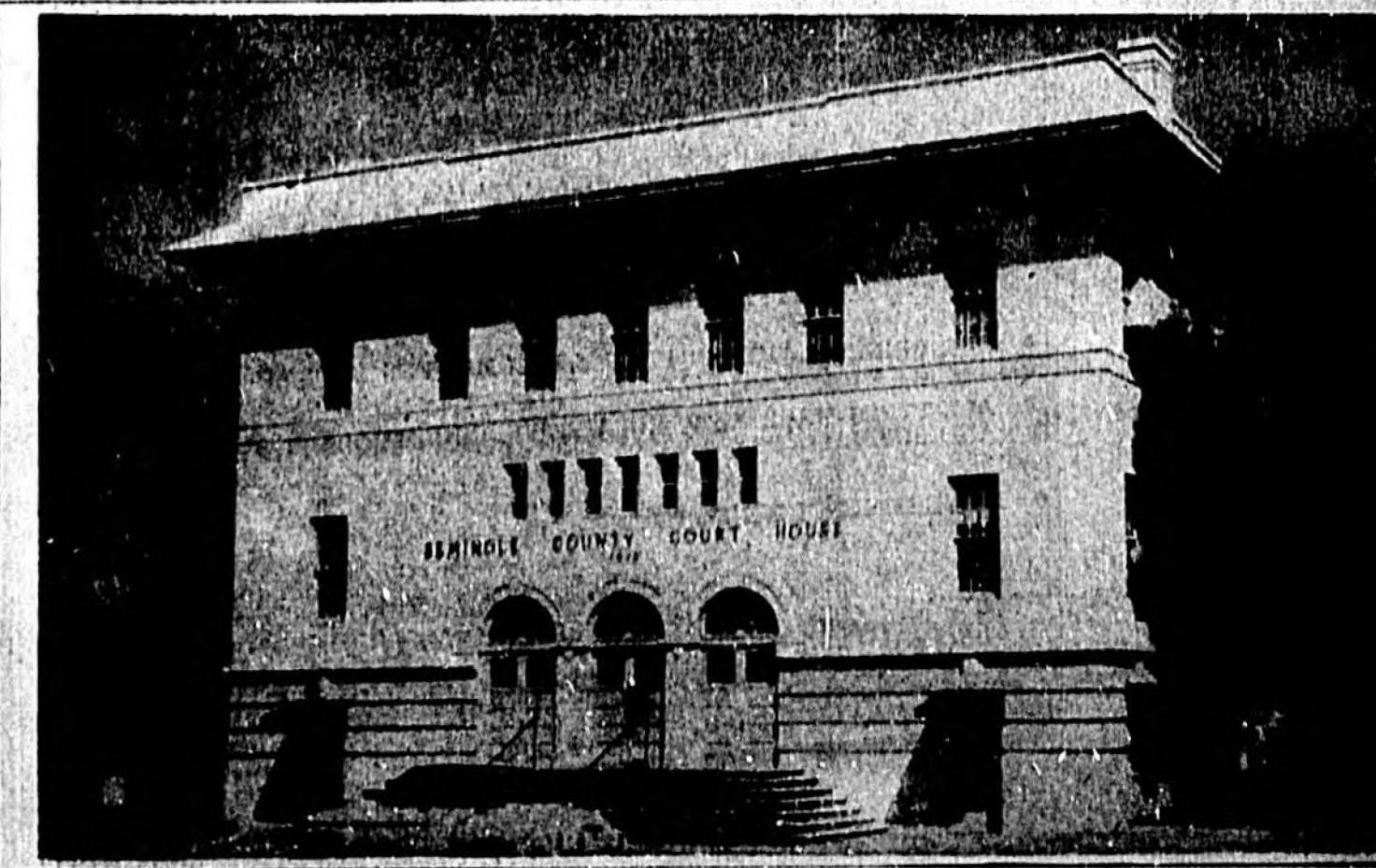
Brand New Seminole Memorial Hospital



A MILLION DOLLAR view looking over the St. Johns River and Lake Monroe.



Aerial View of Ft. Mellon Park and City of Sanford.



Seminole County Court House