



WANT AD SALE

GOOD April 14 thru 18 Only

3 lines 5 days
ONLY \$2.25

Save \$1.05
ADDITIONAL LINES 15c PER LINE PER DAY

SELL RENT BUY HIRE • REAL ESTATE MERCHANDISE AUTOS APPLIANCES

The Sanford Herald Want Ad Department joins thousands of newspapers throughout the world in celebrating International Want Ad Week by offering you this special opportunity to save money while getting acquainted with the power and economy of Want Ads. Any ad placed by a private individual which starts April 14 thru April 18 is eligible for this special rate. (No commercial advertising will be accepted at this low rate). Ads will run a maximum of 5 days at this rate.

DIAL 322-2611
OR
425-5938



N. Koreans Down U. S. Plane; 31 Aboard Navy Recon Jet Lost In Japan Sea

Bulletin
Seminole County **** on the St. Johns River **** "The Nile of America"
The Sanford Herald
Phone 322-2611 or 425-5938 Zip Code 32771
WEATHER: Monday 70-81; cloudy and warm thru Wednesday.
VOL. 61, NO. 175 — AP Leased Wire — Established 1908 — TUESDAY, APRIL 15, 1969 — SANFORD, FLORIDA — Price 10 Cents

Private School Elects Directors Will Locate At Airport

By BILL SCOTT
Establishment of a private school for Sanford moved closer to becoming a reality last night when a temporary board of directors, composed of six men and a woman, were elected during a meeting at the United States Bank of Seminole. John Mercer, Roger Berry, Phillip Logan, Joe S. Kurimal, George Harden, Don Reynolds and Sally Rosen were picked to become the nucleus of a permanent 11-member board to be chosen later, possibly at a Monday night meeting at Seminole Memorial Hospital auditorium.

The hospital facility was sought since the bank facilities were not large enough to accommodate the overflow crowd that thronged the first session. At least 60 people were present for the first convocation and heard Reynolds, biology teacher and principal in the creation of Melville School to be housed at a rented Sanford Airport facility. Reynolds said the building is 15,000 square feet and would house 300 students from grades 1-9 on the first floor alone.

Reynolds stated other building advantages include tennis, volleyball and handball courts to give students good physical education opportunities. A swimming pool and still other activities also are available, the teacher added, to give the pupils a first rate education.

Reynolds said he expected no trouble in accreditation standards as only accredited teachers would be used, with latest state approved textbooks. Over 25 persons put up \$100 each to get the school organized, and were informed the facility would be a non-profit venture, since private gifts and money can be accepted and properly owned by the school will not be subject to taxes.

Berry, Sanford attorney and an organizer of the school, reported a conversation between himself and Congressman William Chappell over the chartering of the facility. Berry informed Chappell had drafted the charter and by-laws to be used and the document was now in process of being mailed to him.

Reynolds stated the first year payroll would be between \$82,000 and \$100,000 and explained it was necessary to



LeGALS installed Dorothy Waller as president this morning, after which Circuit Judge Volie A. Williams Jr. spoke. Newly installed officers of the Seminole County Legal Secretaries Association (from the left) are: Dorothy Firestone, treasurer; Donna Henderson, governor and outgoing president; Dorothy Waller and Kay Gallagher, vice president. Newly installed secretary is Phyllis Verahel.

In Girl's Murder Case Kirk Orders Starr Probe

COOKE, Fla. (AP) — Gov. Claude Kirk ordered a probe into the handling of the Camella Jo Hand case at funeral directors of over \$1,500 poured in for the 8-year-old victim of a sex killer.

Kirk's probe was ordered Monday after William Reed, director of the Florida Law Enforcement Bureau, disclosed that Orange County Sheriff Dave Starr turned down his offer to put crack state investigators on the job.

"He said he didn't need the help because the investigation was proceeding satisfactorily," said Reed.

Kirk asked Reed to make the report and also check allegations that Sheriff Starr made a recording for a television station commenting on the interrogation of a neighborhood after he had been cleared and released.

Meanwhile, the parents of the first grader said \$1,500 in contributions had been received by an Ocoee bank to defray costs of the girl's funeral and burial. Most of it came from residents of Central Florida.

Camella Jo's parents, Clyde and Sonja Hand, said they would bury their child near Dothan, Ala., on Wednesday.

Camella Jo was walking to Spring Lake Elementary School last Thursday when she disappeared. Searchers found her abused and mutilated body Saturday in a shallow grave in a lovers' lane.

Authorities said they believed the girl's killer lured her into his car as she walked to school, then drove her to the secluded area where her body was discovered.

"We don't have a single concrete lead at this time," said Sheriff Starr.

The principal of Spring Lake, Robert L. Patton, said school bus service had been extended so the 50 or 60 youngsters from Camella Jo's neighborhood will not have to walk to school any longer.



GREG DRUMMOND (left), Republican, is congratulated on his appointment to the Seminole County Commission by Chairman John Alexander.

Private School Elects Directors Will Locate At Airport

By BILL SCOTT
Establishment of a private school for Sanford moved closer to becoming a reality last night when a temporary board of directors, composed of six men and a woman, were elected during a meeting at the United States Bank of Seminole. John Mercer, Roger Berry, Phillip Logan, Joe S. Kurimal, George Harden, Don Reynolds and Sally Rosen were picked to become the nucleus of a permanent 11-member board to be chosen later, possibly at a Monday night meeting at Seminole Memorial Hospital auditorium.

By Casselberry Council County Commission Roasted

By DONNA ESTES
County Commissioners Robert Parker and John Alexander were not only orally roasted by the Casselberry City Council last night, they were near barbecued.

The two commissioners were verbally attacked by first and then members of the city governing body for the inconvenience being suffered by the citizens of Casselberry because of the motor vehicle inspection station which is located within the municipality.

Councilman Bill Grizer started the ball rolling with a motion that "for the health, safety and welfare" of the citizens of Casselberry that Triplet Drive be made a one-way street east to west. The street is used as an access road to the inspection station. Due to the large volume of traffic at the station, the city has found it necessary to post a patrolman at Triplet and Hwy. 17-92.

Grizer's suggestion met with immediate objection from the audience.

The mayor's remarks were followed closely by bitter denunciation of the County Commission by Mayor Curtis Blaw. He reported on the recent luncheon set up by the Council with the county board to discuss the problem. He pointed out the luncheon was for noon and the Commission did not show up until 1:28 p.m.

What's Inside

| | |
|------------------|-------|
| Area deaths | 2A |
| Bridge | 2B |
| Calendar | 2A |
| Carnet Corner | 2B |
| Classified ads | 4B-5B |
| Comics | 2B-3B |
| Crossword puzzle | 2B |
| Dear Abby | 2B |
| Editorial page | 4A |
| Entertainment | 2B |
| Horoscope | 2B |
| Hospital notes | 2A |
| Society | 1B |
| 6A-7A | 2B |
| Sports | 2B |
| TV | 2B |
| The Sun | 4B |

Private School Elects Directors Will Locate At Airport

By BILL SCOTT
Establishment of a private school for Sanford moved closer to becoming a reality last night when a temporary board of directors, composed of six men and a woman, were elected during a meeting at the United States Bank of Seminole. John Mercer, Roger Berry, Phillip Logan, Joe S. Kurimal, George Harden, Don Reynolds and Sally Rosen were picked to become the nucleus of a permanent 11-member board to be chosen later, possibly at a Monday night meeting at Seminole Memorial Hospital auditorium.

Private School Elects Directors Will Locate At Airport

By BILL SCOTT
Establishment of a private school for Sanford moved closer to becoming a reality last night when a temporary board of directors, composed of six men and a woman, were elected during a meeting at the United States Bank of Seminole. John Mercer, Roger Berry, Phillip Logan, Joe S. Kurimal, George Harden, Don Reynolds and Sally Rosen were picked to become the nucleus of a permanent 11-member board to be chosen later, possibly at a Monday night meeting at Seminole Memorial Hospital auditorium.

Private School Elects Directors Will Locate At Airport

By BILL SCOTT
Establishment of a private school for Sanford moved closer to becoming a reality last night when a temporary board of directors, composed of six men and a woman, were elected during a meeting at the United States Bank of Seminole. John Mercer, Roger Berry, Phillip Logan, Joe S. Kurimal, George Harden, Don Reynolds and Sally Rosen were picked to become the nucleus of a permanent 11-member board to be chosen later, possibly at a Monday night meeting at Seminole Memorial Hospital auditorium.

Private School Elects Directors Will Locate At Airport

By BILL SCOTT
Establishment of a private school for Sanford moved closer to becoming a reality last night when a temporary board of directors, composed of six men and a woman, were elected during a meeting at the United States Bank of Seminole. John Mercer, Roger Berry, Phillip Logan, Joe S. Kurimal, George Harden, Don Reynolds and Sally Rosen were picked to become the nucleus of a permanent 11-member board to be chosen later, possibly at a Monday night meeting at Seminole Memorial Hospital auditorium.

Private School Elects Directors Will Locate At Airport

By BILL SCOTT
Establishment of a private school for Sanford moved closer to becoming a reality last night when a temporary board of directors, composed of six men and a woman, were elected during a meeting at the United States Bank of Seminole. John Mercer, Roger Berry, Phillip Logan, Joe S. Kurimal, George Harden, Don Reynolds and Sally Rosen were picked to become the nucleus of a permanent 11-member board to be chosen later, possibly at a Monday night meeting at Seminole Memorial Hospital auditorium.

Private School Elects Directors Will Locate At Airport

By BILL SCOTT
Establishment of a private school for Sanford moved closer to becoming a reality last night when a temporary board of directors, composed of six men and a woman, were elected during a meeting at the United States Bank of Seminole. John Mercer, Roger Berry, Phillip Logan, Joe S. Kurimal, George Harden, Don Reynolds and Sally Rosen were picked to become the nucleus of a permanent 11-member board to be chosen later, possibly at a Monday night meeting at Seminole Memorial Hospital auditorium.

Private School Elects Directors Will Locate At Airport

By BILL SCOTT
Establishment of a private school for Sanford moved closer to becoming a reality last night when a temporary board of directors, composed of six men and a woman, were elected during a meeting at the United States Bank of Seminole. John Mercer, Roger Berry, Phillip Logan, Joe S. Kurimal, George Harden, Don Reynolds and Sally Rosen were picked to become the nucleus of a permanent 11-member board to be chosen later, possibly at a Monday night meeting at Seminole Memorial Hospital auditorium.

Now There's More Than One!

FIBREGLAS BELTED TIRE BY DUNLOP

Super Sports Wide Track AVAILABLE AT

408 W. First John Dickey-Cowner 322-6451 Sanford

Private School Elects Directors Will Locate At Airport

By BILL SCOTT
Establishment of a private school for Sanford moved closer to becoming a reality last night when a temporary board of directors, composed of six men and a woman, were elected during a meeting at the United States Bank of Seminole. John Mercer, Roger Berry, Phillip Logan, Joe S. Kurimal, George Harden, Don Reynolds and Sally Rosen were picked to become the nucleus of a permanent 11-member board to be chosen later, possibly at a Monday night meeting at Seminole Memorial Hospital auditorium.

Private School Elects Directors Will Locate At Airport

By BILL SCOTT
Establishment of a private school for Sanford moved closer to becoming a reality last night when a temporary board of directors, composed of six men and a woman, were elected during a meeting at the United States Bank of Seminole. John Mercer, Roger Berry, Phillip Logan, Joe S. Kurimal, George Harden, Don Reynolds and Sally Rosen were picked to become the nucleus of a permanent 11-member board to be chosen later, possibly at a Monday night meeting at Seminole Memorial Hospital auditorium.

Private School Elects Directors Will Locate At Airport

By BILL SCOTT
Establishment of a private school for Sanford moved closer to becoming a reality last night when a temporary board of directors, composed of six men and a woman, were elected during a meeting at the United States Bank of Seminole. John Mercer, Roger Berry, Phillip Logan, Joe S. Kurimal, George Harden, Don Reynolds and Sally Rosen were picked to become the nucleus of a permanent 11-member board to be chosen later, possibly at a Monday night meeting at Seminole Memorial Hospital auditorium.

Private School Elects Directors Will Locate At Airport

By BILL SCOTT
Establishment of a private school for Sanford moved closer to becoming a reality last night when a temporary board of directors, composed of six men and a woman, were elected during a meeting at the United States Bank of Seminole. John Mercer, Roger Berry, Phillip Logan, Joe S. Kurimal, George Harden, Don Reynolds and Sally Rosen were picked to become the nucleus of a permanent 11-member board to be chosen later, possibly at a Monday night meeting at Seminole Memorial Hospital auditorium.

Private School Elects Directors Will Locate At Airport

By BILL SCOTT
Establishment of a private school for Sanford moved closer to becoming a reality last night when a temporary board of directors, composed of six men and a woman, were elected during a meeting at the United States Bank of Seminole. John Mercer, Roger Berry, Phillip Logan, Joe S. Kurimal, George Harden, Don Reynolds and Sally Rosen were picked to become the nucleus of a permanent 11-member board to be chosen later, possibly at a Monday night meeting at Seminole Memorial Hospital auditorium.

Private School Elects Directors Will Locate At Airport

By BILL SCOTT
Establishment of a private school for Sanford moved closer to becoming a reality last night when a temporary board of directors, composed of six men and a woman, were elected during a meeting at the United States Bank of Seminole. John Mercer, Roger Berry, Phillip Logan, Joe S. Kurimal, George Harden, Don Reynolds and Sally Rosen were picked to become the nucleus of a permanent 11-member board to be chosen later, possibly at a Monday night meeting at Seminole Memorial Hospital auditorium.

Private School Elects Directors Will Locate At Airport

By BILL SCOTT
Establishment of a private school for Sanford moved closer to becoming a reality last night when a temporary board of directors, composed of six men and a woman, were elected during a meeting at the United States Bank of Seminole. John Mercer, Roger Berry, Phillip Logan, Joe S. Kurimal, George Harden, Don Reynolds and Sally Rosen were picked to become the nucleus of a permanent 11-member board to be chosen later, possibly at a Monday night meeting at Seminole Memorial Hospital auditorium.

Private School Elects Directors Will Locate At Airport

By BILL SCOTT
Establishment of a private school for Sanford moved closer to becoming a reality last night when a temporary board of directors, composed of six men and a woman, were elected during a meeting at the United States Bank of Seminole. John Mercer, Roger Berry, Phillip Logan, Joe S. Kurimal, George Harden, Don Reynolds and Sally Rosen were picked to become the nucleus of a permanent 11-member board to be chosen later, possibly at a Monday night meeting at Seminole Memorial Hospital auditorium.

Private School Elects Directors Will Locate At Airport

By BILL SCOTT
Establishment of a private school for Sanford moved closer to becoming a reality last night when a temporary board of directors, composed of six men and a woman, were elected during a meeting at the United States Bank of Seminole. John Mercer, Roger Berry, Phillip Logan, Joe S. Kurimal, George Harden, Don Reynolds and Sally Rosen were picked to become the nucleus of a permanent 11-member board to be chosen later, possibly at a Monday night meeting at Seminole Memorial Hospital auditorium.

Private School Elects Directors Will Locate At Airport

By BILL SCOTT
Establishment of a private school for Sanford moved closer to becoming a reality last night when a temporary board of directors, composed of six men and a woman, were elected during a meeting at the United States Bank of Seminole. John Mercer, Roger Berry, Phillip Logan, Joe S. Kurimal, George Harden, Don Reynolds and Sally Rosen were picked to become the nucleus of a permanent 11-member board to be chosen later, possibly at a Monday night meeting at Seminole Memorial Hospital auditorium.

Private School Elects Directors Will Locate At Airport

By BILL SCOTT
Establishment of a private school for Sanford moved closer to becoming a reality last night when a temporary board of directors, composed of six men and a woman, were elected during a meeting at the United States Bank of Seminole. John Mercer, Roger Berry, Phillip Logan, Joe S. Kurimal, George Harden, Don Reynolds and Sally Rosen were picked to become the nucleus of a permanent 11-member board to be chosen later, possibly at a Monday night meeting at Seminole Memorial Hospital auditorium.

Private School Elects Directors Will Locate At Airport

By BILL SCOTT
Establishment of a private school for Sanford moved closer to becoming a reality last night when a temporary board of directors, composed of six men and a woman, were elected during a meeting at the United States Bank of Seminole. John Mercer, Roger Berry, Phillip Logan, Joe S. Kurimal, George Harden, Don Reynolds and Sally Rosen were picked to become the nucleus of a permanent 11-member board to be chosen later, possibly at a Monday night meeting at Seminole Memorial Hospital auditorium.

Private School Elects Directors Will Locate At Airport

By BILL SCOTT
Establishment of a private school for Sanford moved closer to becoming a reality last night when a temporary board of directors, composed of six men and a woman, were elected during a meeting at the United States Bank of Seminole. John Mercer, Roger Berry, Phillip Logan, Joe S. Kurimal, George Harden, Don Reynolds and Sally Rosen were picked to become the nucleus of a permanent 11-member board to be chosen later, possibly at a Monday night meeting at Seminole Memorial Hospital auditorium.

Private School Elects Directors Will Locate At Airport

By BILL SCOTT
Establishment of a private school for Sanford moved closer to becoming a reality last night when a temporary board of directors, composed of six men and a woman, were elected during a meeting at the United States Bank of Seminole. John Mercer, Roger Berry, Phillip Logan, Joe S. Kurimal, George Harden, Don Reynolds and Sally Rosen were picked to become the nucleus of a permanent 11-member board to be chosen later, possibly at a Monday night meeting at Seminole Memorial Hospital auditorium.

Private School Elects Directors Will Locate At Airport

By BILL SCOTT
Establishment of a private school for Sanford moved closer to becoming a reality last night when a temporary board of directors, composed of six men and a woman, were elected during a meeting at the United States Bank of Seminole. John Mercer, Roger Berry, Phillip Logan, Joe S. Kurimal, George Harden, Don Reynolds and Sally Rosen were picked to become the nucleus of a permanent 11-member board to be chosen later, possibly at a Monday night meeting at Seminole Memorial Hospital auditorium.

Private School Elects Directors Will Locate At Airport

By BILL SCOTT
Establishment of a private school for Sanford moved closer to becoming a reality last night when a temporary board of directors, composed of six men and a woman, were elected during a meeting at the United States Bank of Seminole. John Mercer, Roger Berry, Phillip Logan, Joe S. Kurimal, George Harden, Don Reynolds and Sally Rosen were picked to become the nucleus of a permanent 11-member board to be chosen later, possibly at a Monday night meeting at Seminole Memorial Hospital auditorium.

Private School Elects Directors Will Locate At Airport

By BILL SCOTT
Establishment of a private school for Sanford moved closer to becoming a reality last night when a temporary board of directors, composed of six men and a woman, were elected during a meeting at the United States Bank of Seminole. John Mercer, Roger Berry, Phillip Logan, Joe S. Kurimal, George Harden, Don Reynolds and Sally Rosen were picked to become the nucleus of a permanent 11-member board to be chosen later, possibly at a Monday night meeting at Seminole Memorial Hospital auditorium.

Private School Elects Directors Will Locate At Airport

By BILL SCOTT
Establishment of a private school for Sanford moved closer to becoming a reality last night when a temporary board of directors, composed of six men and a woman, were elected during a meeting at the United States Bank of Seminole. John Mercer, Roger Berry, Phillip Logan, Joe S. Kurimal, George Harden, Don Reynolds and Sally Rosen were picked to become the nucleus of a permanent 11-member board to be chosen later, possibly at a Monday night meeting at Seminole Memorial Hospital auditorium.

Private School Elects Directors Will Locate At Airport

By BILL SCOTT
Establishment of a private school for Sanford moved closer to becoming a reality last night when a temporary board of directors, composed of six men and a woman, were elected during a meeting at the United States Bank of Seminole. John Mercer, Roger Berry, Phillip Logan, Joe S. Kurimal, George Harden, Don Reynolds and Sally Rosen were picked to become the nucleus of a permanent 11-member board to be chosen later, possibly at a Monday night meeting at Seminole Memorial Hospital auditorium.

Private School Elects Directors Will Locate At Airport

By BILL SCOTT
Establishment of a private school for Sanford moved closer to becoming a reality last night when a temporary board of directors, composed of six men and a woman, were elected during a meeting at the United States Bank of Seminole. John Mercer, Roger Berry, Phillip Logan, Joe S. Kurimal, George Harden, Don Reynolds and Sally Rosen were picked to become the nucleus of a permanent 11-member board to be chosen later, possibly at a Monday night meeting at Seminole Memorial Hospital auditorium.

Private School Elects Directors Will Locate At Airport

By BILL SCOTT
Establishment of a private school for Sanford moved closer to becoming a reality last night when a temporary board of directors, composed of six men and a woman, were elected during a meeting at the United States Bank of Seminole. John Mercer, Roger Berry, Phillip Logan, Joe S. Kurimal, George Harden, Don Reynolds and Sally Rosen were picked to become the nucleus of a permanent 11-member board to be chosen later, possibly at a Monday night meeting at Seminole Memorial Hospital auditorium.

Private School Elects Directors Will Locate At Airport

By BILL SCOTT
Establishment of a private school for Sanford moved closer to becoming a reality last night when a temporary board of directors, composed of six men and a woman, were elected during a meeting at the United States Bank of Seminole. John Mercer, Roger Berry, Phillip Logan, Joe S. Kurimal, George Harden, Don Reynolds and Sally Rosen were picked to become the nucleus of a permanent 11-member board to be chosen later, possibly at a Monday night meeting at Seminole Memorial Hospital auditorium.

Private School Elects Directors Will Locate At Airport

By BILL SCOTT
Establishment of a private school for Sanford moved closer to becoming a reality last night when a temporary board of directors, composed of six men and a woman, were elected during a meeting at the United States Bank of Seminole. John Mercer, Roger Berry, Phillip Logan, Joe S. Kurimal, George Harden, Don Reynolds and Sally Rosen were picked to become the nucleus of a permanent 11-member board to be chosen later, possibly at a Monday night meeting at Seminole Memorial Hospital auditorium.

Private School Elects Directors Will Locate At Airport

By BILL SCOTT
Establishment of a private school for Sanford moved closer to becoming a reality last night when a temporary board of directors, composed of six men and a woman, were elected during a meeting at the United States Bank of Seminole. John Mercer, Roger Berry, Phillip Logan, Joe S. Kurimal, George Harden, Don Reynolds and Sally Rosen were picked to become the nucleus of a permanent 11-member board to be chosen later, possibly at a Monday night meeting at Seminole Memorial Hospital auditorium.

Private School Elects Directors Will Locate At Airport

By BILL SCOTT
Establishment of a private school for Sanford moved closer to becoming a reality last night when a temporary board of directors, composed of six men and a woman, were elected during a meeting at the United States Bank of Seminole. John Mercer, Roger Berry, Phillip Logan, Joe S. Kurimal, George Harden, Don Reynolds and Sally Rosen were picked to become the nucleus of a permanent 11-member board to be chosen later, possibly at a Monday night meeting at Seminole Memorial Hospital auditorium.

Private School Elects Directors Will Locate At Airport

By BILL SCOTT
Establishment of a private school for Sanford moved closer to becoming a reality last night when a temporary board of directors, composed of six men and a woman, were elected during a meeting at the United States Bank of Seminole. John Mercer, Roger Berry, Phillip Logan, Joe S. Kurimal, George Harden, Don Reynolds and Sally Rosen were picked to become the nucleus of a permanent 11-member board to be chosen later, possibly at a Monday night meeting at Seminole Memorial Hospital auditorium.

Private School Elects Directors Will Locate At Airport

By BILL SCOTT
Establishment of a private school for Sanford moved closer to becoming a reality last night when a temporary board of directors, composed of six men and a woman, were elected during a meeting at the United States Bank of Seminole. John Mercer, Roger Berry, Phillip Logan, Joe S. Kurimal, George Harden, Don Reynolds and Sally Rosen were picked to become the nucleus of a permanent 11-member board to be chosen later, possibly at a Monday night meeting at Seminole Memorial Hospital auditorium.

Private School Elects Directors Will Locate At Airport

By BILL SCOTT
Establishment of a private school for Sanford moved closer to becoming a reality last night when a temporary board of directors, composed of six men and a woman, were elected during a meeting at the United States Bank of Seminole. John Mercer, Roger Berry, Phillip Logan, Joe S. Kurimal, George Harden, Don Reynolds and Sally Rosen were picked to become the nucleus of a permanent 11-member board to be chosen later, possibly at a Monday night meeting at Seminole Memorial Hospital auditorium.

Private School Elects Directors Will Locate At Airport

By BILL SCOTT
Establishment of a private school for Sanford moved closer to becoming a reality last night when a temporary board of directors, composed of six men and a woman, were elected during a meeting at the United States Bank of Seminole. John Mercer, Roger Berry, Phillip Logan, Joe S. Kurimal, George Harden, Don Reynolds and Sally Rosen were picked to become the nucleus of a permanent 11-member board to be chosen later, possibly at a Monday night meeting at Seminole Memorial Hospital auditorium.

Private School Elects Directors Will Locate At Airport

By BILL SCOTT
Establishment of a private school for Sanford moved closer to becoming a reality last night when a temporary board of directors, composed of six men and a woman, were elected during a meeting at the United States Bank of Seminole. John Mercer, Roger Berry, Phillip Logan, Joe S. Kurimal, George Harden, Don Reynolds and Sally Rosen were picked to become the nucleus of a permanent 11-member board to be chosen later, possibly at a Monday night meeting at Seminole Memorial Hospital auditorium.

Private School Elects Directors Will Locate At Airport

By BILL SCOTT
Establishment of a private school for Sanford moved closer to becoming a reality last night when a temporary board of directors, composed of six men and a woman, were elected during a meeting at the United States Bank of Seminole. John Mercer, Roger Berry, Phillip Logan, Joe S. Kurimal, George Harden, Don Reynolds and Sally Rosen were picked to become the nucleus of a permanent 11-member board to be chosen later, possibly at a Monday night meeting at Seminole Memorial Hospital auditorium.

Private School Elects Directors Will Locate At Airport

By BILL SCOTT
Establishment of a private school for Sanford moved closer to becoming a reality last night when a temporary board of directors, composed of six men and a woman, were elected during a meeting at the United States Bank of Seminole. John Mercer, Roger Berry, Phillip Logan, Joe S. Kurimal, George Harden, Don Reynolds and Sally Rosen were picked to become the nucleus of a permanent 11-member board to be chosen later, possibly at a Monday night meeting at Seminole Memorial Hospital auditorium.

Private School Elects Directors Will Locate At Airport

By BILL SCOTT
Establishment of a private school for Sanford moved closer to becoming a reality last night when a temporary board of directors, composed of six men and a woman, were elected during a meeting at the United States Bank of Seminole. John Mercer, Roger Berry, Phillip Logan, Joe S. Kurimal, George Harden, Don Reynolds and Sally Rosen were picked to become the nucleus of a permanent 11-member board to be chosen later, possibly at a Monday night meeting at Seminole Memorial Hospital auditorium.

Private School Elects Directors Will Locate At Airport

By BILL SCOTT
Establishment of a private school for Sanford moved closer to becoming a reality last night when a temporary board of directors, composed of six men and a woman, were elected during a meeting at the United States Bank of Seminole. John Mercer, Roger Berry, Phillip Logan, Joe S. Kurimal, George Harden, Don Reynolds and Sally Rosen were picked to become the nucleus of a permanent 11-member board to be chosen later, possibly at a Monday night meeting at Seminole Memorial Hospital auditorium.

Private School Elects Directors Will Locate At Airport

By BILL SCOTT
Establishment of a private school for Sanford moved closer to becoming a reality last night when a temporary board of directors, composed of six men and a woman, were elected during a meeting at the United States Bank of Seminole. John Mercer, Roger Berry, Phillip Logan, Joe S. Kurimal, George Harden, Don Reynolds and Sally Rosen were picked to become the nucleus of a permanent 11-member board to be chosen later, possibly at a Monday night meeting at Seminole Memorial Hospital auditorium.

Private School Elects Directors Will Locate At Airport

By BILL SCOTT
Establishment of a private school for Sanford moved closer to becoming a reality last night when a temporary board of directors, composed of six men and a woman, were elected during a meeting at the United States Bank of Seminole. John Mercer, Roger Berry, Phillip Logan, Joe S. Kurimal, George Harden, Don Reynolds and Sally Rosen were picked to become the nucleus of a permanent 11-member board to be chosen later, possibly at a Monday night meeting at Seminole Memorial Hospital auditorium.

Private School Elects Directors Will Locate At Airport

By BILL SCOTT
Establishment of a private school for Sanford moved closer to becoming a reality last night when a temporary board of directors, composed of six men and a woman, were elected during a meeting at the United States Bank of Seminole. John Mercer, Roger Berry, Phillip Logan, Joe S. Kurimal, George Harden, Don Reynolds and Sally Rosen were picked to become the nucleus of a permanent 11-member board to be chosen later, possibly at a Monday night meeting at Seminole Memorial Hospital auditorium.

Private School Elects Directors Will Locate At Airport

By BILL SCOTT
Establishment of a private school for Sanford moved closer to becoming a reality last night when a temporary board of directors, composed of six men and a woman, were elected during a meeting at the United States Bank of Seminole. John Mercer, Roger Berry, Phillip Logan, Joe S. Kurimal, George Harden, Don Reynolds and Sally Rosen were picked to become the nucleus of a permanent 11-member board to be chosen later, possibly at a Monday night meeting at Seminole Memorial Hospital auditorium.

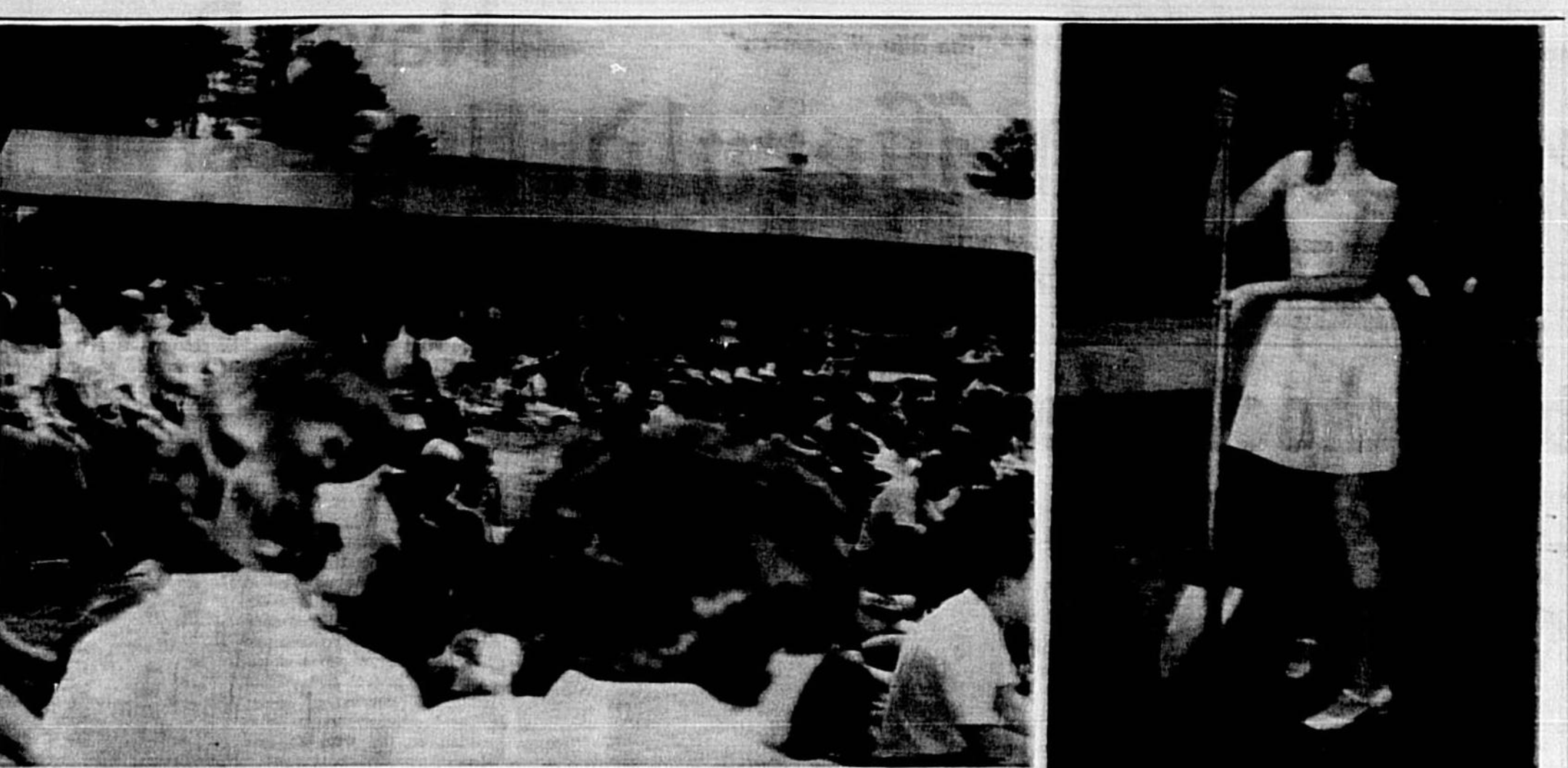
Private School Elects Directors Will Locate At Airport

By BILL SCOTT
Establishment of a private school for Sanford moved closer to becoming a reality last night when a temporary board of directors, composed of six men and a woman, were elected during a meeting at the United States Bank of Seminole. John Mercer, Roger Berry, Phillip Logan, Joe S. Kurimal, George Harden, Don Reynolds and Sally Rosen were picked to become the nucleus of a permanent 11-member board to be chosen later, possibly at a Monday night meeting at Seminole Memorial Hospital auditorium.

Private School Elects Directors Will Locate At Airport

By BILL SCOTT
Establishment of a private school for Sanford moved closer to becoming a reality last night when a temporary board of directors, composed of six men and a woman, were elected during a meeting at the United States Bank of Seminole. John Mercer, Roger Berry, Phillip Logan, Joe S. Kurimal, George Harden, Don Reynolds and Sally Rosen were picked to become the nucleus of a permanent 11-member board to be chosen later, possibly at a Monday night meeting at Seminole Memorial Hospital auditorium.

Legislative Leaders Endorse Huge Pay Hike



OVIEDO High student body and faculty turned out on mass Monday afternoon to witness the groundbreaking for the construction of the second phase of the multi-million-dollar new school complex. Janet Fowler (right), a student, joined in the groundbreaking ceremony, pausing here long enough to get a better grip on the golden shovel. (Bill Scott Photos)

Solons Look To \$13,500

TALLAHASSEE, Fla. (AP) — Republican and Democratic House leaders today endorsed a bill to raise legislators' pay from \$12,000 to \$13,500 annually, even though they said it had provoked a backlash from citizens.

Nixon Unveils New Budget Cut Details

WASHINGTON (AP) — President Nixon unveiled today more details about budget cuts said to represent "hard choices and potentially unpopular decisions."

File Now, Pay Later

WASHINGTON (AP) — The Internal Revenue Service has a "file now, pay later" plan for citizens who are too broke to pay their income taxes now.

Red Attack Proves Fatal

SAIGON (AP) — U.S. ground troops, planes and artillery killed at least 190 North Vietnamese soldiers early today when two enemy battalions tried to overrun a day camp near the Cambodian border.

12 Bid For Port Contract

At least 12 bidders have submitted proposals to construct the Port of Sanford, low bidder to be announced at April 30 bid opening set for 2 p.m. in court house.

N. Koreans Down U.S. Airplane

WASHINGTON (AP) — The U.S. imperialist aggressors must bear in mind that the stern warning of the Korean People's Army has not empty talk and the Korean People's Army stands any provocation of the U.S. imperialist aggressors.

Hospital Notes

APRIL 14, 1969
ADMISSIONS: Vernon Helton, Sanford; Homer W. Little, Sanford; Marjorie Brown, Sanford; Sally Ann Saward, Sanford; Julian Benton, Sanford; Norris Bishop, Sanford; Myriam Beuhler, Sanford; Donald E. Grigori, Sanford; Lucille Newton, Sanford; Lucille Pennington, Sanford; Jack H. Bowman, Sanford; James T. Williams, Sanford; Lora Mae Wilson, Sanford; Beulah M. Bartholomew, Sanford; Caroline Cressid, Sanford; Arthur DeYoung, Sanford; Nasser E. Kassen, Sanford; Laura Hess, Lela Mary; Kathryn Dreggers, Osteen; Betty Morrison, Deltona; Dale C. Wentworth, Lake Mary.

Seminole Calendar

April 15
Civil Air Patrol, 7 p.m., Duffing 17, Sanford Airport, general meeting.

Miniskirt Protest

TALLAHASSEE, Fla. (AP) — A short skirt march on the Florida capitol is one legislative secretary's answer to ban the miniskirt.

Sanford Vegetable Mart

FEDERAL-STATE MARKET NEWS SERVICE
SANFORD, FLORIDA
VEGETABLE REPORT

Sanford Vegetable Mart

Shipping point information for Monday, April 14th. All sales F.O.B. for stock of generally good quality, unless otherwise stated. Prevalent changes extra.

Sanford-Oviedo

—KELLYWOOD DISTRICT: Demand Fairly Good, Market Steady. Demand Round type, medium to large size, 1 1/2 bushel crates \$1.25, occasional higher and lower, 50 lb. sacks \$1.00, occasional higher, large size, few low as \$90. 1 1/2 bushel crates, Red & Savoy cress \$1.50-2.00, mostly \$1.50-1.75.

Sanford-Oviedo

—Market Steady, Topped and washed, mesh bags, mesh containers, 48-1 lb. film bags, medium to large size, \$2.15-50 lbs. sacks, large size, loose pack, \$2.50.

Sanford-Oviedo

—Market Steady, Bunched and washed, topped and washed, film bags, 100 type, 30-40 lbs. White ice type, 34-18 or \$2.50.

Sanford-Oviedo

—Market Steady, Bunched and washed, topped and washed, film bags, 100 type, 30-40 lbs. White ice type, 34-18 or \$2.50.

Moon Walk Set July 20

SPACE CENTER, Houston, Tex. (AP) — A civilian space man may make his mark in history by taking a well-timed stroll while the satellite's lesser gravity.

Not Banned In Botswana

TALLAHASSEE, Fla. (AP) — A short skirt march on the Florida capitol is one legislative secretary's answer to ban the miniskirt.

Do FALSE TEETH Rock, Slide or Slip?

LOBATSI, Botswana (AP) — A Botswana secretary has been showing films banned in adjoining South Africa.

Beach Boys Sue

LOS ANGELES (AP) — The Beach Boys rock group has filed a \$2 million lawsuit in Superior Court here against Capitol Records.

Fortune Claimed

SALISBURY, Rhodesia (AP) — Four Rhodesians are claiming a share in the 66 million Rhodesian pound (£18 million) fortune of a South African adventurer who struck oil in Venezuela and died more than 40 years ago.

Funeral Notice

ELIZABETH - Passed services for Eugene McLeod, 60, of 1107 W. Second Street, Sanford, died at 2:15 p.m. Monday at Sanford.

Funeral Notice

GERTRUDE I. MARCHO Mrs. Gertrude I. Marcho, 74, of Corning, N.Y., died Monday afternoon at Seminole Memorial Hospital.

Funeral Notice

—Market Steady, Bunched and washed, topped and washed, film bags, 100 type, 30-40 lbs. White ice type, 34-18 or \$2.50.

Hold Your Horses Import Car Buyers MAVERICK is Coming April 17th Jack Prosser Ford

We have and are offering a limited supply of INSURED BANK SAVINGS CERTIFICATES OF DEPOSIT DISCOUNTED TO YIELD 6 1/2%

These certificates of deposit, used by commercial bank members as a means of deposit insurance, are insured by the Federal Deposit Insurance Corporation, a U.S. Government agency. Maturity dates up to one year. Offered on a "first come, first served" basis. No phone or write today for full details.

THE B.C. MORTON ORGANIZATION, INC. Harry Schelberger, Box, Mgr. 115 E. Woodfield Dr., Sanford, Fla. 32771. Tel: 322-7557.

FREE HEARING TEST

SONOTONE 501 North Main St. Orlando, Fla. 32801

Southern Bell

General Electric Dependability Permanent Press Cool-Down King Size 14 lb. Capacity

ALL FOR ONLY \$195

NO MONEY DOWN - EASY TERMS

SANFORD ELECTRIC CO. 2522 S. PARK AVE. DIAL 322-1562

Sometimes it's the folks back home who are homesick. That's one of the reasons long distance calls feel so good.

FACTS YOU SHOULD KNOW ABOUT FUNERALS.... A Respected Name

means a great deal in the selection of a funeral home. Years of service to a community in a dignified and conscientious manner demonstrate the quality that can be expected from an establishment. We are proud of our record.

BRISSON FUNERAL HOME 322-2131

24 HOUR PRESCRIPTION SERVICE

NORELO HEARING AIDS AND ACCESSORIES

Hospital Equipment FOR SALE or RENT

Wheel Chair Crutches Hospital Beds Bedside Commodes Walkers Oxygen Equipment

Editorial Comment

How About Truly Representative Government

How representative is our representative government? This is asked not for the purpose of debate on any theoretical issue, but to emphasize that what is going on in our legislative bodies from Washington to Tallahassee in the matter of pay hikes, evidently is ignoring and ignoring public sentiment.

The respondents called this action "inflationary" and noted that "private industry and labor cannot hold wage-price guidelines with such examples." These "voters and taxpayers" asked the national legislators to "work toward rescinding this increase and work toward economy in government."

It should be understood also that what is reported as the salary for our senators and representatives is not the realistic measure of what comes to them, quite properly, because of the fact of the office they have been elected to fill.

Even if not listed, these emoluments are not unknown to the voters. Nor are they subject to general criticism. Under usual conditions they would not even be worthy of mention.

But these are not usual times and this is not, from any point of view, a time when the voters, the citizens whose taxes must provide the dollars for pay hikes can view what is being done as enactment in Tallahassee with composure.

Pushing salaries for the legislators to \$13,500 with larger amounts for those filling public positions of leadership, as proposed, would add about \$2.5 million to the annual cost of legislation.

True we have new conditions for legislators to cope with in this 1968 session. But every candidate knew this when he ran for office in 1968. Did any ask for votes on the basis that, if elected, they would need higher salaries?

That is one reason why we ask about the quality of representation in Tallahassee when judged by reflection of the wishes, the expressed wishes, of the voters — the ones who sent them there and can either keep them there or return them to the lucrative practice of their private profession.

Intriguing Items!

Newspaper reading is very much a matter of habit. There are those who are headline addicts. They read the black type, and skip, unhappily, from story to story and very often miss the real information which the report was printed to convey.

Sport enthusiasts — and almost everybody is such a fan when the sport is his particular dish — jump over into our capable Spolski's intriguing and reliable pages.

Fashion is the magnet for many. And when our Doris puts an event into print with art of the professionally handled camera of Bill Vincent, there is a page or two which merge and receives attention.

Comics, "Dear Abby" and the special columns printed on this and other sections of our Herald attract their own kind of readers.

Today, however, we would guide you into a realm of special interest for everyone of every persuasion. These are the "classified advertisements" of the "Want Ads."

This week is "International Want Ad Week" and has received the official gubernatorial endorsement of Gov. Claude R. Kirk Jr. We welcome his support and in this join hands with our outspanning governor.

But to us this is not so much "international" as local and intimate and interesting enough to call it to our county readers attention. Let us explain at once that this is not a "sales pitch" unless awakening a community to something of basic value which may have been overlooked can be so defined.

Newspaper Want Ad advertising has had a steady growth. It has emerged, since WW II as a powerful economic and social force. It finds new objectives. Names it! Classified has found it!

"Believe It or Not" as Ripley used to say, statistics show that "an ad medium." Want Ads "have longer than total radio and total outdoor advertising combined in 1968."

Spice up your daily newspaper reading. Look over our classified. It could become a most rewarding habit from the point of view of interest and it is sure to become a practical help when you want anything of any sort at any time!

Spice up your daily newspaper reading. Look over our classified. It could become a most rewarding habit from the point of view of interest and it is sure to become a practical help when you want anything of any sort at any time!

Spice up your daily newspaper reading. Look over our classified. It could become a most rewarding habit from the point of view of interest and it is sure to become a practical help when you want anything of any sort at any time!

Spice up your daily newspaper reading. Look over our classified. It could become a most rewarding habit from the point of view of interest and it is sure to become a practical help when you want anything of any sort at any time!

Spice up your daily newspaper reading. Look over our classified. It could become a most rewarding habit from the point of view of interest and it is sure to become a practical help when you want anything of any sort at any time!

Spice up your daily newspaper reading. Look over our classified. It could become a most rewarding habit from the point of view of interest and it is sure to become a practical help when you want anything of any sort at any time!

Spice up your daily newspaper reading. Look over our classified. It could become a most rewarding habit from the point of view of interest and it is sure to become a practical help when you want anything of any sort at any time!

Spice up your daily newspaper reading. Look over our classified. It could become a most rewarding habit from the point of view of interest and it is sure to become a practical help when you want anything of any sort at any time!

Spice up your daily newspaper reading. Look over our classified. It could become a most rewarding habit from the point of view of interest and it is sure to become a practical help when you want anything of any sort at any time!

Still Roaming the World!



San Francisco, Calif. - Aerial view of the city and the Golden Gate Bridge.

Helen Fuller Says:

Malnutrition And Hunger Here

WASHINGTON — Senator William Phipps has just completed a survey of malnutrition in his native Virginia. His report in several counties shows that the Department of Agriculture has been conducting studies of food needs in seven foreign countries for three years, but only began studying malnutrition in this country on the same scale in the past year.

Medical experts studying one bottom-rung group of children revealed more than 60 per cent in one county 5 years and more than 80 per cent in another.

The Sheriff of Madison County greeted the Senator with a hostile protest that he was not needed there. No one is "starving to death" in his county! Gov. Mills Godwin defended Virginia on the score that there may be cases of malnutrition, but he has seen no evidence of actual hunger.

Of course, Senator Phipps, a very cautious man, has not charged there is starvation. Both he and Sen. Ernest Hollings, who made an earlier such investigation in his native South Carolina, are convinced that they believe contain the seeds of potential starvation.

A growing number of Senators and Administration leaders are becoming more concerned about the damage malnutrition is doing to children of our least income families.

The Senate has established by Senator George McGovern's Committee on Nutrition and Human Needs are sponsoring a bill which our government expects to push soon to amend changes in our present system for food.

Committee findings will shock many citizens when they receive publicity. Even Congressmen are expected to be shocked.

Expensive cadets do not represent station in the eyes of God and are a staid state of affairs.

The Rev. Crawford F. Combes of Mills, Mass.

Interpretive Report: American World Dominance?

By RICHARD WILSON, WASHINGTON, D. C. — The world's leading group of global strategists and geopolitical analysts has reached a startling conclusion that the United States has lost its desire and its ability to be the "universal and dominant power."

This has come to an end, this group concludes, of the annual survey of the United States has become the full equal of the United States in strategic power and its ability to control or influence the policy of other nations.

This judgment was made in the annual survey of the International Institute of Strategic Studies, centered in London and with a membership drawn from 26 countries.

It is especially interesting that this international group should conclude that America has lost its desire as well as its ability to run the world in its own way. This is the heart of the matter in the continuing great debate involving the Vietnam War, the anti-ballistic missile defense system, the Pentagon budget, and the general military posture of this country.

The development of American policy in this century there have been several important landmarks. Rejection of the League and the Treaty of Versailles, the Truman Doctrine, to name several. We apparently again are in another period of debate and great decision on the extent of American world responsibility and our ability to fulfill them.

This is what the McCarthyism in the Democratic Party was all about. It was the present revolt of the Foreign Relations Committee. It underlines much of the trend and others have warned that our withdrawal could lead to the creation of a "garrison state" in Vietnam.

The Nixon approach apparently is to reduce our responsibilities to the point where they may be realistically fulfilled at a lower cost. This is the winding down of the war in Vietnam, the pursuit of an arms agreement with Russia, the exploration of new relationships with Red China, the definition of less aggressive attitudes in the North Atlantic Treaty Organization.

This could all be considered part of the detected desire in the United States to be of the "universal and dominant power." The larger question is whether or not this winding down of global responsibilities will prove to be the long-range desire as merely a temporary reaction growing out of frustration in Vietnam and doubts about the "military-industrial complex."

In other periods of relaxation or withdrawal aggressive nations have been nudged toward the massive nuclear responsibility has become greater whether we desire it or not.

Crane's Worry Clinic:

By GEORGE W. CRANE, PH.D. — CARE 1-986: Laura L., aged 29, has two youngsters who are in kindergarten and first grade.

"I'm not hungry," she generally reports. "The same reaction usually occurs when you are mentally pre-occupied with some acute problem in business or school."

"You feel sure that it is due to the same emotional adjustment Daddy crosses at the dinner table."

"For when Daddy is happy and jolly at mealtime, the boys then eat the little pigs and never complain of any stomach-aches or indigestion."

Laura is certainly correct, both from the medical as well as the psychological angles.

"Try to eat happy and gay, even if you don't feel that way! Happiness and love are the best things you can give your children."

So good parents need to include some advocacy would be wholly inadequate. It could protect against only a few few minutes, and would provide an defense at all against more sophisticated weapons. Our country's security should not be compromised in this manner.

The Rev. Crawford F. Combes of Mills, Mass.

Letters To Editor

'One Donation Club' Donates

Editor, Herald: The following open letter is self-explanatory.

I. E. Estridge III, Mr. Gene Estridge, Jimmie Campaign Chairman, United Fund of Seminole County.

Reference: Your letter dated October 8, 1968.

Sorry for the delay in answering your letter, however, I am sure you are aware of the chaos your letters to the different companies, in Brevard County, caused.

Mr. American does not have an in-plant United Fund Campaign every year. Your letter was referred to the "One Donation Club" for consideration.

The "One Donation Club" is made up of members who volunteer for payroll deductions. The money, then, is handled by a Board of Directors, making the determination of who the recipients are and for how much.

As of December 31, 1968 there were 94 Pan American employees living in Seminole County which is less than two per cent of the total employees.

Of this number, less than 25 per cent are members of the "One Donation Club." In fact we have had several members living in Seminole County who have cancelled their deductions.

They thought they were deriving no benefit by giving where they work. May I hasten to add that we have contributed \$2,900.20 for equipment at the Seminole Hospital in Sanford, which is the largest contribution to date.

The Cauleys, who have trained at New Tribes Mission near Oviedo, will be living in a jungle area never before served by missionaries. Our members are to take complete supplies for the four-year period.

Church members will give them a shower to help provide these supplies and the adult department will present a "this is your life" program for the couple.

All members and friends of the church are invited to be present.

Homemakers Have Program On Fashions

By DORIS GORNILY — Newest clothing fashions and materials were shown in the program "Focus on Fashion," presented by the Homemakers Club.

Home Economics Agent Miss Louise Long and Mrs. Tinsina Sikes, at the monthly meeting of the Ladies' Mission Extension Homemakers Club.

Miss Long invited agents to attend a drapery workshop, April 22-24, at the Inter-Center.

The meeting was conducted by Mrs. Alice Clemens, president, and Mrs. Gladys Condy read the club prayer.

Table for the social period was decorated with the theme of spring flowers. Refreshments, on the Easter theme, were served by Mrs. Libby Seneff.

Those present were Mrs. Peggy Akens, Mrs. Mildred Donaldson, Mrs. Mildred Gasky, Mrs. Kay Swanson, Mrs. Helen Powell, Mrs. Hazel Moss, Miss Long, Mrs. Sikes, Mrs. Carvelin, Mrs. Sikes and Mrs. Clemens.

Indiana Club Sees Film

By MILDRED HANBY — Premier showing of "Deltona in the Making," with Donnell of radio's "Dess-Fee Club" as narrator, was shown at a recent meeting of the Indiana State Club of Deltona, with 86 members in attendance.

The film presents a "first-hand" look at the tremendous growth of the Deltona community since its origin six years ago.

Prior to the film showing, a special discussion concerning the development of the community was conducted by Charles Schoenbaum of Deltona Corporation.

The public is allowed to enter the inner precincts of the Imperial Palace in Tokyo only twice a year—Jan. 2 and the Emperor's birthday, April 29.

Library Opens In Chuluota

By LIZA HAKER — The Chuluota Library has opened and has new books available and paper back books for exchange.

Hours will be from 10 a.m. until noon each Tuesday and Wednesday. A small fee will be charged and any donations will be appreciated and gratefully accepted.

Any change in schedule of hours will be posted in the library at the Community Club House.

Women of the area volunteering their services are Mrs. Pearl Atterbury, Mrs. Cecily M. Jones, Mrs. J. J. Jones, Mrs. A. H. Hadden, Mrs. Jeanie Knight and Mrs. Gail Johns.

Always write to Dr. Crane in care of this newspaper, enclosing a long stamped, addressed envelope and 20 cents to cover typing and printing costs when you send for one of his booklets.

London Symphony Returning

DAYTONA BEACH (Sp.)—Twelve major concerts by the great London Symphony Orchestra and three major automobile races... one of which will be attended by 160 or more Congressional Medal of Honor recipients.

The world-famous Daytona International Speedway will be the scene of three top-flight auto races. Midnight July 3, will be the start of the Ford Fiero 250, and 10 a.m. July 4 marks the beginning of the 11th annual Independence Day race.

There is another big season of baseball scheduled this summer by the Daytona Dodgers, Florida State League team sponsored by the Los Angeles Dodgers. Their home ball park is the baseball diamond on City Island in downtown Daytona Beach.

Also during the 1967 football season the program also provides for three evening chamber recitals.

ROSES JOHN APPELEY POTTED PLANTS 408 W. PALM AVE. 322-1148

Evangelistic Services Underway At Pinecrest

The Musical Belts, gospel musicians, are featured at evangelistic services this week at Pinecrest Baptist Church, 110 W. Orono Road, with Rev. O. Charles Horton, pastor of Flagami Baptist Church, Miami, as special speaker.

Services will be at 7:30 p.m. each week and will continue through Sunday morning and evening.

The Musical Belts are nationally known, having traveled in all parts of the United States, and much of Canada, Jamaica, Cuba and the Bahamas. They have been in the Gospel ministry for 25 years with their unique, musical program, and a spirit-filled testimony.

Among the musical instruments they will be utilizing are the six octave marimba, concert vibraphone, hawaiian guitar, 500 string bells, 32 cow bells and the singing saw. They also will present vocal solos.

Rev. Horton, born in Palatka, and reared in Perry, is the son of a Baptist minister. He is a 1939 graduate of Stetson University, and received his Bachelor of Divinity degree from the Southwestern Seminary. He completed work on his Masters Degree at New Orleans Baptist Seminary.

He taught junior high school for two years, and also had two years teaching experience in several southern states, as well as speaking to numerous youth groups.

Flagami Baptist Church which he pastored a number of churches in Texas, Louisiana, and Florida, and is an experienced speaker, having preached revival in several southern states, as well as speaking to numerous youth groups.

Flazami Baptist Church which he pastored in 1953. It has experienced a rapid growth in the southwest section of Miami and now has nearly 1,300 members.

Flazami Baptist Church which he pastored in 1953. It has experienced a rapid growth in the southwest section of Miami and now has nearly 1,300 members.

Flazami Baptist Church which he pastored in 1953. It has experienced a rapid growth in the southwest section of Miami and now has nearly 1,300 members.

Flazami Baptist Church which he pastored in 1953. It has experienced a rapid growth in the southwest section of Miami and now has nearly 1,300 members.

Flazami Baptist Church which he pastored in 1953. It has experienced a rapid growth in the southwest section of Miami and now has nearly 1,300 members.

Flazami Baptist Church which he pastored in 1953. It has experienced a rapid growth in the southwest section of Miami and now has nearly 1,300 members.

Flazami Baptist Church which he pastored in 1953. It has experienced a rapid growth in the southwest section of Miami and now has nearly 1,300 members.

Flazami Baptist Church which he pastored in 1953. It has experienced a rapid growth in the southwest section of Miami and now has nearly 1,300 members.

Flazami Baptist Church which he pastored in 1953. It has experienced a rapid growth in the southwest section of Miami and now has nearly 1,300 members.

Flazami Baptist Church which he pastored in 1953. It has experienced a rapid growth in the southwest section of Miami and now has nearly 1,300 members.

Flazami Baptist Church which he pastored in 1953. It has experienced a rapid growth in the southwest section of Miami and now has nearly 1,300 members.

Flazami Baptist Church which he pastored in 1953. It has experienced a rapid growth in the southwest section of Miami and now has nearly 1,300 members.

Flazami Baptist Church which he pastored in 1953. It has experienced a rapid growth in the southwest section of Miami and now has nearly 1,300 members.

Flazami Baptist Church which he pastored in 1953. It has experienced a rapid growth in the southwest section of Miami and now has nearly 1,300 members.

Flazami Baptist Church which he pastored in 1953. It has experienced a rapid growth in the southwest section of Miami and now has nearly 1,300 members.

Flazami Baptist Church which he pastored in 1953. It has experienced a rapid growth in the southwest section of Miami and now has nearly 1,300 members.

Flazami Baptist Church which he pastored in 1953. It has experienced a rapid growth in the southwest section of Miami and now has nearly 1,300 members.

Flazami Baptist Church which he pastored in 1953. It has experienced a rapid growth in the southwest section of Miami and now has nearly 1,300 members.

Flazami Baptist Church which he pastored in 1953. It has experienced a rapid growth in the southwest section of Miami and now has nearly 1,300 members.

Flazami Baptist Church which he pastored in 1953. It has experienced a rapid growth in the southwest section of Miami and now has nearly 1,300 members.

Flazami Baptist Church which he pastored in 1953. It has experienced a rapid growth in the southwest section of Miami and now has nearly 1,300 members.

Flazami Baptist Church which he pastored in 1953. It has experienced a rapid growth in the southwest section of Miami and now has nearly 1,300 members.

Flazami Baptist Church which he pastored in 1953. It has experienced a rapid growth in the southwest section of Miami and now has nearly 1,300 members.

Flazami Baptist Church which he pastored in 1953. It has experienced a rapid growth in the southwest section of Miami and now has nearly 1,300 members.

Flazami Baptist Church which he pastored in 1953. It has experienced a rapid growth in the southwest section of Miami and now has nearly 1,300 members.

Flazami Baptist Church which he pastored in 1953. It has experienced a rapid growth in the southwest section of Miami and now has nearly 1,300 members.

Flazami Baptist Church which he pastored in 1953. It has experienced a rapid growth in the southwest section of Miami and now has nearly 1,300 members.

Flazami Baptist Church which he pastored in 1953. It has experienced a rapid growth in the southwest section of Miami and now has nearly 1,300 members.

Flazami Baptist Church which he pastored in 1953. It has experienced a rapid growth in the southwest section of Miami and now has nearly 1,300 members.

Now at George Stuart's

The Most Advanced Electronic Calculating Machines in the World!

The largest selection of desktop computers, priced from \$775 to \$1275. Integrated circuits. Operate silently and instantly — operate so fast the speed is calculated in millions of a second!

See them in our store — or, for a demonstration in your own office phone 241-3431, or write today.

MINI At a mini price. For everything but the most sophisticated calculations. Adds and subtracts, multiplies and divides in mill seconds. Automatic constant multiplication and division. Full capability for exponent and mixed calculation. Fully automatic decimal system. With 2 working registers. 8 1/2 lbs. \$775.00. Sharp CS-17C.

MIDI Equipped with a full-capacity memory bank as well as 2 working registers. Adds, subtracts, multiplies, divides instantly. Exponent and mixed calculations. Automatic constant multiplication and division. Fully automatic decimal system. Priced only slightly higher than the "Mini" — at \$895.00. 8 1/2 lbs. Sharp CS-18C.

MULTI Fills the gap between our biggest calculator and the smaller ones. Fully automatic, decimal half-cent round off, and credit balance systems. Automatic constant multiplication and division. Two registers plus a full-function memory bank. Memory indicator, over-capacity and error light. 8 1/2 lbs. \$1075.00. Sharp CS-25C.

MAXI For every use from general business to scientific. Rates to add power, squares, extracts successive multi-division. Automatic constant multiplication and division. Fully automatic decimal, round off and credit balance systems. 2 memory banks, 2 registers. Many other features. 14.5 lbs. \$1275.00. Sharp CS-33C.

FASTFOLD MINOR Will make up to 12,000 bills in an hour with sheets up to 8 1/2 x 11 1/2 inches in length. It is simpler to operate, it features automatic feeding and automatic ejection for different paper thickness and non-standard sizes. It is compact, ready to use. \$395.

FASTFOLD MAJOR Will make up to 12,000 bills in an hour with sheets up to 8 1/2 x 11 1/2 inches in length. It is simpler to operate, it features automatic feeding and automatic ejection for different paper thickness and non-standard sizes. It is compact, ready to use. \$495.

FASTFOLD MAJOR Will make up to 12,000 bills in an hour with sheets up to 8 1/2 x 11 1/2 inches in length. It is simpler to operate, it features automatic feeding and automatic ejection for different paper thickness and non-standard sizes. It is compact, ready to use. \$495.

FASTFOLD MAJOR Will make up to 12,000 bills in an hour with sheets up to 8 1/2 x 11 1/2 inches in length. It is simpler to operate, it features automatic feeding and automatic ejection for different paper thickness and non-standard sizes. It is compact, ready to use. \$495.

FASTFOLD MAJOR Will make up to 12,000 bills in an hour with sheets up to 8 1/2 x 11 1/2 inches in length. It is simpler to operate, it features automatic feeding and automatic ejection for different paper thickness and non-standard sizes. It is compact, ready to use. \$495.

FASTFOLD MAJOR Will make up to 12,000 bills in an hour with sheets up to 8 1/2 x 11 1/2 inches in length. It is simpler to operate, it features automatic feeding and automatic ejection for different paper thickness and non-standard sizes. It is compact, ready to use. \$495.

FASTFOLD MAJOR Will make up to 12,000 bills in an hour with sheets up to 8 1/2 x 11 1/2 inches in length. It is simpler to operate, it features automatic feeding and automatic ejection for different paper thickness and non-standard sizes. It is compact, ready to use. \$495.

FASTFOLD MAJOR Will make up to 12,000 bills in an hour with sheets up to 8 1/2 x 11 1/2 inches in length. It is simpler to operate, it features automatic feeding and automatic ejection for different paper thickness and non-standard sizes. It is compact, ready to use. \$495.

FASTFOLD MAJOR Will make up to 12,000 bills in an hour with sheets up to 8 1/2 x 11 1/2 inches in length. It is simpler to operate, it features automatic feeding and automatic ejection for different paper thickness and non-standard sizes. It is compact, ready to use. \$495.

FASTFOLD MAJOR Will make up to 12,000 bills in an hour with sheets up to 8 1/2 x 11 1/2 inches in length. It is simpler to operate, it features automatic feeding and automatic ejection for different paper thickness and non-standard sizes. It is compact, ready to use. \$495.

FASTFOLD MAJOR Will make up to 12,000 bills in an hour with sheets up to 8 1/2 x 11 1/2 inches in length. It is simpler to operate, it features automatic feeding and automatic ejection for different paper thickness and non-standard sizes. It is compact, ready to use. \$495.

FASTFOLD MAJOR Will make up to 12,000 bills in an hour with sheets up to 8 1/2 x 11 1/2 inches in length. It is simpler to operate, it features automatic feeding and automatic ejection for different paper thickness and non-standard sizes. It is compact, ready to use. \$495.

FASTFOLD MAJOR Will make up to 12,000 bills in an hour with sheets up to 8 1/2 x 11 1/2 inches in length. It is simpler to operate, it features automatic feeding and automatic ejection for different paper thickness and non-standard sizes. It is compact, ready to use. \$495.

FASTFOLD MAJOR Will make up to 12,000 bills in an hour with sheets up to 8 1/2 x 11 1/2 inches in length. It is simpler to operate, it features automatic feeding and automatic ejection for different paper thickness and non-standard sizes. It is compact, ready to use. \$495.

FASTFOLD MAJOR Will make up to 12,000 bills in an hour with sheets up to 8 1/2 x 11 1/2 inches in length. It is simpler to operate, it features automatic feeding and automatic ejection for different paper thickness and non-standard sizes. It is compact, ready to use. \$495.

FASTFOLD MAJOR Will make up to 12,000 bills in an hour with sheets up to 8 1/2 x 11 1/2 inches in length. It is simpler to operate, it features automatic feeding and automatic ejection for different paper thickness and non-standard sizes. It is compact, ready to use. \$495.

FASTFOLD MAJOR Will make up to 12,000 bills in an hour with sheets up to 8 1/2 x 11 1/2 inches in length. It is simpler to operate, it features automatic feeding and automatic ejection for different paper thickness and non-standard sizes. It is compact, ready to use. \$495.

FASTFOLD MAJOR Will make up to 12,000 bills in an hour with sheets up to 8 1/2 x 11 1/2 inches in length. It is simpler to operate, it features automatic feeding and automatic ejection for different paper thickness and non-standard sizes. It is compact, ready to use. \$495.

FASTFOLD MAJOR Will make up to 12,000 bills in an hour with sheets up to 8 1/2 x 11 1/2 inches in length. It is simpler to operate, it features automatic feeding and automatic ejection for different paper thickness and non-standard sizes. It is compact, ready to use. \$495.

FASTFOLD MAJOR Will make up to 12,000 bills in an hour with sheets up to 8 1/2 x 11 1/2 inches in length. It is simpler to operate, it features automatic feeding and automatic ejection for different paper thickness and non-standard sizes. It is compact, ready to use. \$

Students Salute Savant

In recent years several students at Sanford Junior High School have won statewide recognition for their efforts while others have brought honor to their school and themselves in local shows and displays.



ART STUDENTS Fred Gibbs, Charles Knight, Stephanie Tredway and Mary Collins are pictured with teacher Robert Iseli at Sanford Junior High School.

Nixon Outlines His Aims

WASHINGTON (AP) — Resolutions in Congress hailed President Nixon's domestic program today as "significant," "fundamental," "well-directed." But Democratic leaders said they would await specifics before taking a stand.

Mystery Chieftainess

SALISBURY, Rhodesia (AP) — Officials struggling to promote a government community development program have made a breakthrough to a mystery chieftainess who rules 20,000 tribesmen from a remote hilltop kraal.

Teen Votes Favored

TRENTON (AP) — The New Jersey Senate Monday decisively approved a proposal to lower New Jersey's voting age from 21 to 18.

Labor Leaders Parley With Nixon's Aides

WHITE SULPHUR SPRINGS, W. Va. (AP) — The administration sent its top economic policymakers before the AFL-CIO's leaders today to give assurances that President Nixon's three-way squeeze on inflation won't put millions out of work.

Too Soon

PRETORIA, South Africa (AP) — T.H. Frame, manager of a clothing firm, received a letter addressed to the executor of his estate which expressed sympathy over his death.

Public Invited To Card Party

Spire Circle of Cathedral Court Order of the Amaranth is sponsoring a card and game party, April 22, at 7:30 p.m. at Odd Fellows Hall, Magnolia Ave.

College News

Miss Linda Ley, daughter of Mr. and Mrs. E. L. Ley, has received her Bachelor of Arts Degree from University of South Florida. She will participate in commencement exercises which will be held June 15.

Wesleyan Guild Views Film On Holy Land

Mrs. L. M. Swain was hostess recently at her home, 914 West 20th St., to the regular monthly meeting of the Wesleyan Guild of United First Methodist Church.

Women Learn New Sewing Techniques

A six weeks intermediate sewing class, which was sponsored by the American Home Department of Sanford Woman's Club held the 1st session April 10.

Jury Holds Sirhan's Fate

LOS ANGELES (AP) — The fate of Sirhan Bishara Sirhan rests with a jury that must weigh this question: how ill was he mentally when he killed Robert F. Kennedy?

The banishment, 23-year-old Jordanian Arab who put a gun to the head of the New York senator last June 5 watched stolidly as the jury of seven men and five women filed from the courtroom Monday to fix the degree of his crime.

Instructed by Judge Herbert V. Walker to be "uninfluenced by pity for the defendant or passion or by prejudice against him," the jury can return any of four possible verdicts:

—First degree murder — asked by the state—with the penalty of life in prison or death. The penalty would be determined by the jury in a separate session.

—Second degree murder — asked by the defense—with the term of five years to life in prison.

—Manslaughter, one to 10 years.

The defense contended that Sirhan's mind was so blurred that the crime didn't meet the legal definition of first degree murder. But it did not ask for the other possible verdicts of manslaughter or outright acquittal.

Prosecutor Lynn D. Compton, in his final argument, had this to say about the testimony of mental experts in the case.

"The psychiatrists say if you hate a man a little bit and kill him, you are responsible and mature; but if you hate him a lot and kill him, you are not responsible and not mature."

Compton wound up with a plea to the jury to "put a premium on hate" by returning a verdict of less than first degree.

Sirhan turned once to his brother Adel—who is in the spectator section 15 feet away—and

mouthed the words: "Where's mother?"

Adel explained later that Mary Sirhan, who had given her son quiet support from her second-row seat throughout the 14 weeks of trial, "felt she just couldn't go through this day."

Defense attorney Grant B. Cooper told the jury, in his closing argument last week, that Sirhan's motive for the killing "from his sick mind was a good motive. It was a good motive in his mind. He thought it was right."

Compton, sitting on a table, told the jury that Cooper had raised the question, "Is Sirhan a bad guy so we won't hold him responsible?"

The prosecutor leaned forward and said: "They like him, they like I don't like him. I think he is a cunning, vicious man."

A fleeting smile crossed Sirhan's face.

"We are not here to decide whether Sirhan was a clever assassin or even a smart one," Compton said. "That is not the issue. It is simply, was his premeditation of the sufficient quality that you, the jurors, feel that he should be held responsible."

The judge said the jury would sit daily until 4 p.m. The deliberations begin about 8:30 each morning.

Seminole Lodge

Thinking and Cheering Builders Approved Modern Dining Room 200 Sq. Ft. Banquet

PANASONIC Television



The Greatest Television Value in Town

It's a hit with the severest critics. 30 Mighty big square inches of great portable TV. Low profile modern cabinet, built-in antenna. Walnut finish.

JUST \$69.88

OPEN AN ACCOUNT

ZALES NEWIERS

322-1000

Festive Luau To Spark Woman's Club Mental Health Dinner Parties

Luau Hostesses

FUN, FOOD 'N festivity will begin May 24 at Golden Lake, Sanford Airport, when an authentic, tropical luau will end a series of parties being staged by Civic Improvement Committee of Sanford Woman's Club towards a Mental Health facility for Seminole County. Everybody's invited so make your reservations early.



Garden Circles

ROSE CIRCLE Mrs. A. F. Hunt was hostess at her Palmetto Avenue home to the April meeting of Rose Circle of Sanford Garden Club.

Women Learn New Sewing Techniques

A six weeks intermediate sewing class, which was sponsored by the American Home Department of Sanford Woman's Club held the 1st session April 10.

Wesleyan Guild Views Film On Holy Land

Mrs. L. M. Swain was hostess recently at her home, 914 West 20th St., to the regular monthly meeting of the Wesleyan Guild of United First Methodist Church.

Women Gather For Cards, Luncheon

The Social Department of the Sanford Woman's Club met Wednesday for the monthly luncheon and card games.

Public Invited To Card Party

Spire Circle of Cathedral Court Order of the Amaranth is sponsoring a card and game party, April 22, at 7:30 p.m. at Odd Fellows Hall, Magnolia Ave.

College News

Miss Linda Ley, daughter of Mr. and Mrs. E. L. Ley, has received her Bachelor of Arts Degree from University of South Florida. She will participate in commencement exercises which will be held June 15.

Chuluota Personals

By LIZA BAKER special event for that day was the presentation of a cake and gifts honoring Susan on her birthday.

Flowers Say It So Nicely!

PLANTS CORSIAGES CUT FLOWERS You'll need a folding hinged broiler to hold the halved or quartered lobsters. Put the seasoned clams, buttered in a square of foil, over the fire first, so you can serve them for an appetizer. Next, place the fish and vegetables, fully wrapped, with the bread tucked on near the outer edge of the grill.



Near to where you are. No matter where you are. STANDARD OIL

extension of the surtax, cuts in federal spending and a tight rein on credit—was endorsed at Monday's opening session by the top economist of the Johnson administration, Dr. Arthur Okun.

"The No. 1 economic problem remains that of restraining inflation without endangering our economic prosperity in the process," said Okun, who headed the President's Economic Council until the White House changed hands.

With the present package of anti-inflation tools, Okun added, "I'm optimistic that it can be done."

Okun's endorsement was not surprising, because the Nixon program is essentially the same one he helped to prepare for former President Lyndon B. Johnson. It has been adopted by Nixon, but reinforced with an additional \$2.4 billion reduction in the federal budget for fiscal 1970.

Okun's endorsement was not surprising, because the Nixon program is essentially the same one he helped to prepare for former President Lyndon B. Johnson. It has been adopted by Nixon, but reinforced with an additional \$2.4 billion reduction in the federal budget for fiscal 1970.

Okun's endorsement was not surprising, because the Nixon program is essentially the same one he helped to prepare for former President Lyndon B. Johnson. It has been adopted by Nixon, but reinforced with an additional \$2.4 billion reduction in the federal budget for fiscal 1970.

Okun's endorsement was not surprising, because the Nixon program is essentially the same one he helped to prepare for former President Lyndon B. Johnson. It has been adopted by Nixon, but reinforced with an additional \$2.4 billion reduction in the federal budget for fiscal 1970.

Okun's endorsement was not surprising, because the Nixon program is essentially the same one he helped to prepare for former President Lyndon B. Johnson. It has been adopted by Nixon, but reinforced with an additional \$2.4 billion reduction in the federal budget for fiscal 1970.

Okun's endorsement was not surprising, because the Nixon program is essentially the same one he helped to prepare for former President Lyndon B. Johnson. It has been adopted by Nixon, but reinforced with an additional \$2.4 billion reduction in the federal budget for fiscal 1970.

Okun's endorsement was not surprising, because the Nixon program is essentially the same one he helped to prepare for former President Lyndon B. Johnson. It has been adopted by Nixon, but reinforced with an additional \$2.4 billion reduction in the federal budget for fiscal 1970.

Okun's endorsement was not surprising, because the Nixon program is essentially the same one he helped to prepare for former President Lyndon B. Johnson. It has been adopted by Nixon, but reinforced with an additional \$2.4 billion reduction in the federal budget for fiscal 1970.

Okun's endorsement was not surprising, because the Nixon program is essentially the same one he helped to prepare for former President Lyndon B. Johnson. It has been adopted by Nixon, but reinforced with an additional \$2.4 billion reduction in the federal budget for fiscal 1970.



A RUSTIC boatyard takes on some glamour with the arrival of Sue Woodford and her outboard-powered runabout.

WHITE PRINTS FROM YOUR TRACINGS Same Day Service!

FREE ESTIMATES

L.A.W. PAVING & EXCAVATING CO.

Sanford, Fla.

Residential—Commercial—Industrial

10 Years Experience Serving the growing Needs of the area.

- ASPHALT PAVING
CONCRETE CURBS
GUTTER CONSTRUCTION
ASPHALT SEALER

FREE ESTIMATES

322-1081 FOR INFORMATION

Nobody takes your pleasure as seriously as we do.

(A lot of hard work goes into making Chevrolet driving a soft job.)

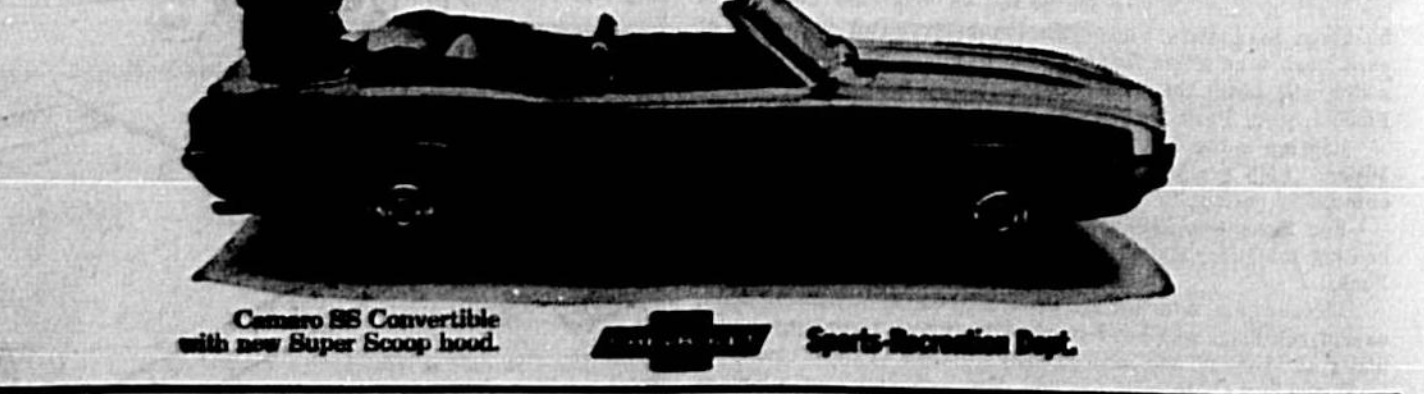
Super Scoop for the Camaro As engine temperatures escalate, so does the need for air. Hence, Super Scoop, a good-looking addition to the Camaro SS coupe, draws in cool outside air and shoots it to the carburetor to boost performance.

Side Guard Door Beam Well, now a new Side Guard Door Beam is in every full-size Chevrolet—Caprice, Impala, Bel Air, Biscayne, Kingswood Estate, Kingswood, Townsman and Brookwood.

Bigger and better bus engines To keep you out of trouble you need an engine that's as quick as your reflexes. That's why Chevrolet installs the biggest 300-cu. in. V-8 in its field on its full-size models.

Now that you know about a few of the ways Chevrolet assists you, why not stop in at your Chevrolet dealer's and learn about a good many more. Nobody is going to spoil your good time, if Chevrolet has anything to say about it.

Putting you first, keeps us first.



Camaro SS Convertible with new Super Scoop hood. Sports-Recreation Dept.

Fish Dinner Cooked On Grill Is Real Treat

It's fun to be up at the deck and cook dinner at the end of a day spent on the water. If your luck has been good and lots of fish have been caught, they will be the feature of the feast!

If you haven't had so much as a nibble, take the easy way. Buy fish, clams, and lobster from one of those picturesque shacks usually found near marinas or wherever boats pull in.

Bring from home some good sized potatoes, foil-wrapped and ready for roasting; a crusty loaf of bread; corn, kept cool in an insulated bag or cooler; and a bag of barbecue briquets with your portable grill.

Build the fire while the fish are being scaled and made ready for cooking. Spread a cloth on a portable picnic table, get out the paper plates and be ready to enjoy this food.

You'll need a folding hinged broiler to hold the halved or quartered lobsters. Put the seasoned clams, buttered in a square of foil, over the fire first, so you can serve them for an appetizer. Next, place the fish and vegetables, fully wrapped, with the bread tucked on near the outer edge of the grill.

You can cook and eat this meal in three courses in less than 30 minutes after the briquets have turned an ashen gray.

Guests for Easter Sunday dinner at the Second Street home of Mr. and Mrs. W. M. Jepson were John and Susan Aris of Sixth Street and Allen and Andrew Jepson of Orlando, Fla.

Flowers Say It So Nicely!

PLANTS CORSIAGES CUT FLOWERS You'll need a folding hinged broiler to hold the halved or quartered lobsters. Put the seasoned clams, buttered in a square of foil, over the fire first, so you can serve them for an appetizer. Next, place the fish and vegetables, fully wrapped, with the bread tucked on near the outer edge of the grill.

NO APPOINTMENT NECESSARY Jack & Jean's BEAUTY SALON SANFORD PLAZA 322-2041

Nutrine Superb CREME COLD WAVE

Contains Penetrating Moisturizer 906 for deeper, long lasting curls and oil-conditioning instant tube neutralizer. Lamecia enriched!

ONE WEEK SPECIAL REG. \$25.00 \$9.95

WIGS CLEANED \$6 AND SET

NO APPOINTMENT NECESSARY

Jack & Jean's BEAUTY SALON

SANFORD PLAZA 322-2041

Wesleyan Guild Views Film On Holy Land

Mrs. L. M. Swain was hostess recently at her home, 914 West 20th St., to the regular monthly meeting of the Wesleyan Guild of United First Methodist Church.

Wesleyan Guild views film on Holy Land.

Home Hints

Store leftover bread in the freezer and use it whenever a sprinkling of bread crumbs is needed. Grate the crumbs on the coarse side of the grater while the bread is still frozen.

If you put the openings of chocolate syrup cans and evaporated milk containers with a ball of aluminum foil, the contents will stay fresh for a longer period of time.

You can use steel wool pads to the bitter end—without having them become rusty—if you put them on top of some baking soda in a little dish used just for that purpose.

Don't waste that hardened cheese. Instead, grate it and refrigerate it in a tightly covered container. It's great in omelets and sauces.

A handful of oatmeal will thicken a long cooking soup when added at the very beginning. The oatmeal adds texture and body without adding many calories.

A social hour was enjoyed at the close of the meeting with Mrs. Swain, Mrs. Esther Lansing and Mrs. J. H. Hoodless as co-hostesses, serving refreshments.

Other attending were Mrs. Walter Carter, Mrs. Janie Shoemaker, Mrs. Burke Steele, Mrs. Louise Callahan, Mrs. Nancy Brock, Mrs. M. A. de Coleman, Mrs. Edith Myers, Mrs. Dorothy Thomas, Mrs. Albert Jarrill, Mrs. Louise Lee, Miss Ethel Riser and Miss Mabel Chapman.

Alden Marcel, son of Mr. and Mrs. E. W. Marcel of 1213 S. Park Ave., spent 30 days leave at home following a two-year tour of duty with the Navy at Guam and Pearl Harbor. He is currently stationed at Newport News, Va.

AMERICA'S BEST!

14" Life Stride

AAAA to B Sizes 5 to 10 PATENTS

White Black Red Navy LUSTRE CALP White Bone Blue Yellow Navy LARGE ASSORTMENT OF SHOE ORNAMENTS

B.V.D. UNDERWEAR ATHLETIC UNDERWEAR T-SHIRTS, SHORTS, BRIEFS \$1.15 3 for \$3.39

Jim Robson MEN'S WEAR 115 Magnolia Sanford Phone 322-1333

Sanford Personal

Alden Marcel, son of Mr. and Mrs. E. W. Marcel of 1213 S. Park Ave., spent 30 days leave at home following a two-year tour of duty with the Navy at Guam and Pearl Harbor. He is currently stationed at Newport News, Va.

SELF-CLEAN OVEN OFFERED FIRST AT REDUCED PRICE

Model E-3000

Timed cook & keep-warm oven system, 18-cup top burner, oven light, stainless steel enamel interior. All burners guaranteed for life. America's easiest range to keep clean.

Just \$1322 Per Month

BIG SPECIALS ON MAYTAG GAS DRYERS FLAT \$5.00 DISCOUNT ON EVERY WATER HEATER

201 W. 1st St. Phone: 322-5723

FLORIDA PUBLIC UTILITIES COMPANY

Offer limited to participating PG&E customers.

Dear Abby: By Abigail Van Buren

DEAR ABBY: I'm an Irish-Catholic, and my fiancée doesn't allow me to date fellows who aren't of my faith. Well, I'm going with a very good-looking Jewish guy. He has blue eyes and dark curly hair and he could pass for Irish. His name is "FINNBERG" but I introduced him to my father as "FINNEGAN."

They only got to say hello and goodbye, but pretty soon I'm afraid they'll get into a conversation and my father will find out the boy's not Irish, and then what will I do? I don't want to be the first teen-ager to land on the moon.

DEAR EYES: Tell your father that before he finds out himself. You may be the first teen-ager to land on the moon, but you'll get there with a clear conscience.

DEAR ABBY: I am a divorcee with an extremely bright 6-year-old girl, I'll call Debbie. Debbie's father lives near us with a woman who is not his wife. This woman is expecting a baby any day. Debbie's mother visits us often, and we go to visit him. (Whatever differences he and I may have had, I must say she was a good father.)

The problem: Debbie assumes her father and this woman are married, but they don't even bother to

put up a respectable front, and I'm scared to death one of these could have been early in life to shake loose from their Pollyanna ways, their lives would be so much richer.

People who have never learned how to give love or accept it, miss the best part of life.

I assure you there isn't a normal man living who doesn't want a warm, responsive, uninhibited wife. God bless you, Abby.

NOT DEAD YET— DEAR ABBY: Never before have I written to a newspaper column, or sent an unsigned letter, or sent a letter from the 41-year-old virgin who was still waiting, came so close to home, I had to tell my story.

In 50 years of marriage I back I bought her a lovely, new dress, and she never wore it. She is a close dresser and wears long, heavy nightgowns. Some years back I bought her a lovely, fairly sheer nightgown, and she took it back to the store and exchanged it for one exactly like those she's always worn.

She's been a wonderful mother to our children, and has many fine qualities, but she is a "to c-h-m-not." Hands are not for patting or caressing, and should be kept to one's self.

I know my wife will never change, so I have learned to live with things as they are, and have kept my busy with outside activities.

DEAR ABBY: I am a divorcee with an extremely bright 6-year-old girl, I'll call Debbie. Debbie's father lives near us with a woman who is not his wife. This woman is expecting a baby any day. Debbie's mother visits us often, and we go to visit him. (Whatever differences he and I may have had, I must say she was a good father.)

The problem: Debbie assumes her father and this woman are married, but they don't even bother to

Horoscope Forecast

WED., APRIL 15, 1969

GENERAL TENDENCIES: You now find it advisable to begin work on the details of the plan of action that you decided upon during the past two days. Be sure to show that you are aware of what is going on around you, and that you have the good common sense to handle the situation. Pay your bills and collect what is owed you.

ARIES (Mar. 21 to Apr. 19): Study your property; see where necessary improvements can be made. Set up a more flexible budget for yourself. Tune up your car so that you get more mileage.

Taurus (Apr. 20 to May 20): Today you are energetic and alert. You can express yourself accurately and to the point. One who admires you extends a fine invitation — accept it and be happy in the evening.

GEMINI (May 21 to June 21): To promote success in the near future, discuss full details with an associate who understands a different area of your own ambitions. You can also enjoy some hobby with a group of friends you particularly like. Be more independent and you will be happy.

LEO (July 22 to Aug. 21): Take this opportunity to improve your position within your own area today. Be more precise at whatever your vocation may be. Build up your energy so that you can accomplish more in the future.

VIROGO (Aug. 22 to Sept. 22): Express your fine ideas and others will realize you are a person of real character. Your plan, through the auspices of a good friend, can now be put in operation so that you get ahead.

LIBRA (Sept. 23 to Oct. 22): Put everything on a practical basis when you confer with experts today. Get busy handling responsibilities, making collections, etc. Show your loved one how much you really care.

SCORPIO (Oct. 23 to Nov. 21): You had better have a little conference with your associates and improve your image with them. Encourage all to work more efficiently for the future. Plan some amusement that can be mutually enjoyed this evening.

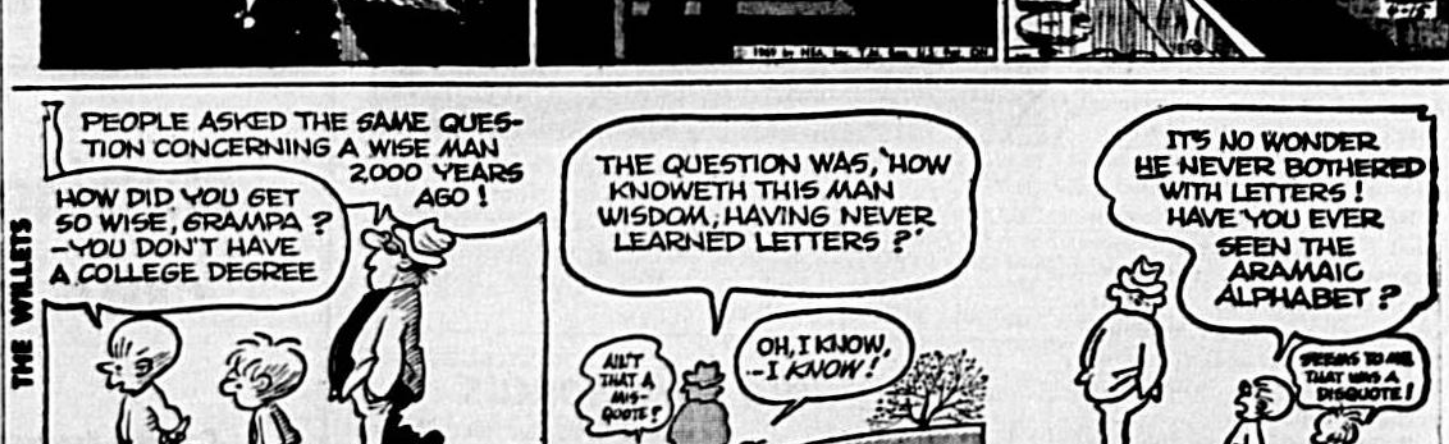
SAGITTARIUS (Nov. 22 to Dec. 21): You know that you have many duties ahead of you, so accomplish them and make the right impression on your supervisors. After work, be smart and relax at home. You will find much there to amuse you.

CAPRICORN (Dec. 22 to Jan. 20): It's all right to go out and have fun as soon as your important tasks are done. Don't permit others to dissuade you from your work. Be efficient if you wish to make the right impression on important people. Avoid crowds.

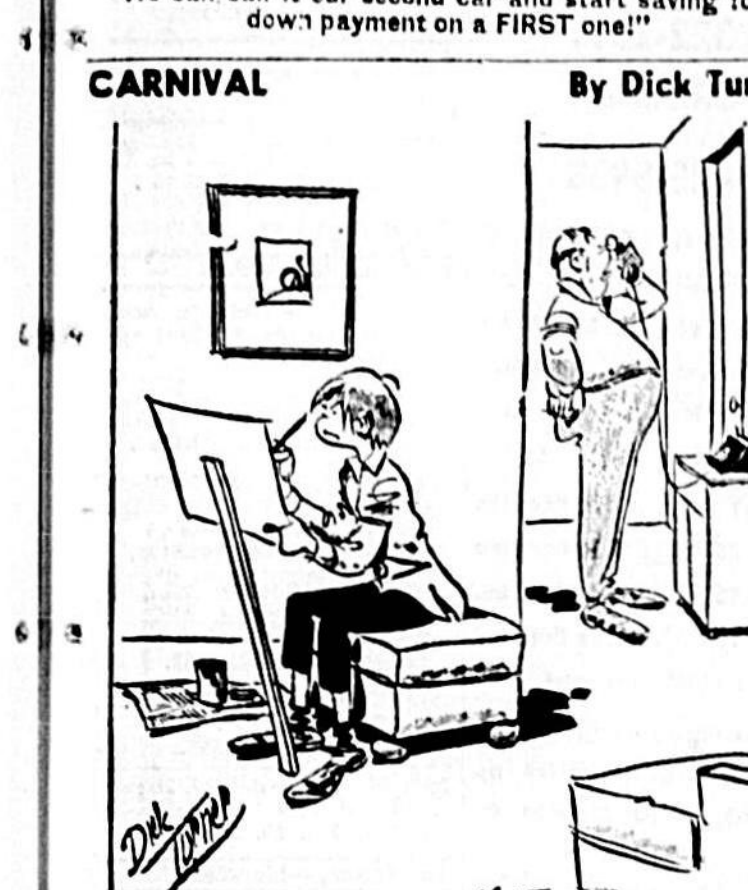
AQUARIUS (Jan. 21 to Feb. 19): If you show friends what your real purposes are, they will soon agree with your ideas. Spend some time with your friends so that it is more efficient, charming and comfortable.

PISCES (Feb. 20 to Mar. 20): Show co-workers that you appreciate their good help although there has been a small misunderstanding. Be sure to take care of the correspondence on your desk. Did you make out those reports properly?

FINCHES (Feb. 20 to Mar. 20): Show co-workers that you appreciate their good help although there has been a small misunderstanding. Be sure to take care of the correspondence on your desk. Did you make out those reports properly?



SIDE GLANCES By Galbraith



THE HERALD BUSINESS REVIEW

FOR ADVERTISING INFORMATION ABOUT THIS PAGE CALL THE SANFORD HERALD 425-5938

322-2611

All-Round Car Service Offered At Dekle's

Everyone has heard the old saying, "Service with a smile." At Dekle's Gulf Service and King Car-Truck Rental this is the top slogan which many Sanford and Seminole County residents have learned to appreciate.

Around-the-clock service with top trained attendants to service and maintain your automobile is a familiar sight in Sanford at Dekle's.

Two new members have been added to the Dekle staff, Pappy Hicken, mechanic, and Don Whittaker, manager, both retired Navy men. All of Hicken's and Whittaker's old services are invited to come to Dekle's for a visit.

Owner Melvin Dekle is now serving local customers for 11 years from the same location on South French Avenue. Each year some new services are added and old renderings remain the same. Finding a place to get your car washed always has been difficult to do, but Dekle's offers custom wax jobs at a reasonable rate to make your car look as new as the day it was bought.

A new service, just added this year, is pre-inspection service, due to the new Florida auto inspection law. Dekle's has the top head light measuring equipment and checks all features on the auto to make sure they are in working order before taking your car to the inspection station.

Another convenience that is difficult to find at other stations is getting your car vacuumed when you pull up for top quality Gulf gasoline and lubricants.

Looking for a car to take a trip? It is cheaper to rent a car these days than to drive your own, or to lease a car instead of buying a new one. Dekle's offers the latest models and makes of cars for rental service through his King Rental franchise. Another community service is the large and small trucks that can be rented from Dekle's for short or long haul moving. Many people have found this service to be superior, instead of paying a huge amount to have someone else move furniture or other items.

If you work and never have that extra amount of time to keep your car in proper running order, call Dekle's when your car breaks down give them a call and one of their four service trucks will be dispatched to your aid within moments. Top mechanics are always on hand to make sure your car is in running order and to repair or replace any auto part.

For top auto and rental service always call the Best — Dekle's.



MEL DEKLE'S Gulf Service Station at 2518 French Avenue.

Central Heating
Air Conditioning
Sales • Service • Contracting

LOU TEMPLE
REFRIGERATION

2606 IRROQUOIS AVE. PH. 322-8812

BUY — SELL — TRADE — LOANS

LONGWOOD PAWN SHOP
GUNS

Beverly Roberts
Licensed Pawn Broker
201 E. Highway 17-92
Longwood, Florida

CUSTOM DESIGNED HANDBAGS & SWEATERS
Mothers Day is Coming — Don't Be Late

Inquire About Our Knitting Classes

YARNS — FELTS — RIBBONS — FLOWERS

WE HAVE LEUENE SWIFLOW

ELAINE'S DESIGNER TRIMS

Longwood Plaza Hwy. 17-92 831-2883

Give Your Old, Ugly Furniture
A New Look And A New Life.

We Completely Re-Do All Work

ALL WORK IS FULLY GUARANTEED

BATTEN UPHOLSTERY
and REFINISHING

322-4850
1 MILE EAST OF NORTH ORLANDO ON SR 17

Furniture Stripping

We remove the old finish and keep the mess... You apply the new.

Bix Service Company

541 HIGHWAY 17-92 PH. 821-2205 PEMBARK, FLA.

FREIGHT DAMAGED FURNITURE

1/2 OFF OR BETTER

FREIGHT DAMAGED FURNITURE SALES

NOLL'S

HWY. 17-92 CASSELLERY

KOAN SEPTIC TANK

MFG.—INSTALLATION

PH. 322-9462

Approved by Seminole County Health Department

Central Heating
Air Conditioning
Sales • Service • Contracting

LOU TEMPLE
REFRIGERATION

2606 IRROQUOIS AVE. PH. 322-8812

BUY — SELL — TRADE — LOANS

LONGWOOD PAWN SHOP
GUNS

Beverly Roberts
Licensed Pawn Broker
201 E. Highway 17-92
Longwood, Florida

CUSTOM DESIGNED HANDBAGS & SWEATERS
Mothers Day is Coming — Don't Be Late

Inquire About Our Knitting Classes

YARNS — FELTS — RIBBONS — FLOWERS

WE HAVE LEUENE SWIFLOW

ELAINE'S DESIGNER TRIMS

Longwood Plaza Hwy. 17-92 831-2883

Give Your Old, Ugly Furniture
A New Look And A New Life.

We Completely Re-Do All Work

ALL WORK IS FULLY GUARANTEED

BATTEN UPHOLSTERY
and REFINISHING

322-4850
1 MILE EAST OF NORTH ORLANDO ON SR 17

Furniture Stripping

We remove the old finish and keep the mess... You apply the new.

Bix Service Company

541 HIGHWAY 17-92 PH. 821-2205 PEMBARK, FLA.

FREIGHT DAMAGED FURNITURE

1/2 OFF OR BETTER

FREIGHT DAMAGED FURNITURE SALES

NOLL'S

HWY. 17-92 CASSELLERY

KOAN SEPTIC TANK

MFG.—INSTALLATION

PH. 322-9462

Approved by Seminole County Health Department

Brass Polishing
"We make it look new"

Kerosene lamp replacements, shades, etc.

REPAIRS
Conversion To Electricity
METAL FINISHING

322-1415 Across From 187 Lake St. Longwood Hotel

SPRING IS HERE

WE HAVE ALL YOUR GARDENING NEEDS

We specialize in SCOTTS, GRO-TONE, and SUNN-LAND Fertilizers.

LAWN MOWERS—FREE DELIVERY

Our Sales and Service Dept. Will Serve You

WHITE'S AUTO STORE

322-8451 SANFORD PINECREST PLAZA

"I've got news for you"

"The Allstate group can provide for just about all your insurance needs. That means I can help you reduce and high costs out of Life, Health, Homeowners, Business and Auto Insurance. Why not get me a call."

JOHN HAMILTON
PHONE: 322-7061

Allstate
Auto Insurance Companies
Northbrook, Illinois

WATCH CLEANING SPECIAL
cleaned—oiled—adjusted

Timex - - - \$3.50

JEWEL MOVEMENT - - - \$6.50

Rings Cleaned — No Charge

BEN A. SMITLEY — CASH & SAVE JEWELERS
798 LONGWOOD PLAZA (17-92) PH. 821-2281

SUMMER'S COMING

Let us have everything ready for you

Our new IMPROVED SERVICE is the BEST around. TRY US.

SANFORD BOAT WORKS

Hwy. 415 or Ocean Bridge 322-4412

Service Special

REGULAR \$2

GREASE JOB

\$1.00

oil and filter extra

HENPHILL

PORTLAND
OLYMPIA
OLYMPIA

1501 W. First—Sanford
Phone 322-4231 or 425-2342

HUNTING FOR BUSINESS?

You Can't Miss — It's Open Season — Advertise in the SANFORD HERALD

For Ad and Feature Story on this page... CALL 322-2611 or 425-9720

MAY WE BE OF SERVICE!

GOLF PRODUCTS • TRAVEL • ACCOMMODATIONS • RESERVATIONS • RENTALS

WES-KAY WASHETERIAS

2918 FRENCH AVE. & 111 WEST 27th ST.

SANFORD'S ONLY COIN LAUNDRIES WITH

SINGLE LOAD WASHERS 15c (YOU PAY 25c ANYWHERE ELSE)

DOUBLE LOAD WASHERS 25c (YOU PAY 35c OR 50c ANYWHERE ELSE)

WHY PAY MORE

Brass Polishing
"We make it look new"

Kerosene lamp replacements, shades, etc.

REPAIRS
Conversion To Electricity
METAL FINISHING

322-1415 Across From 187 Lake St. Longwood Hotel

SPRING IS HERE

WE HAVE ALL YOUR GARDENING NEEDS

We specialize in SCOTTS, GRO-TONE, and SUNN-LAND Fertilizers.

LAWN MOWERS—FREE DELIVERY

Our Sales and Service Dept. Will Serve You

WHITE'S AUTO STORE

322-8451 SANFORD PINECREST PLAZA

"I've got news for you"

"The Allstate group can provide for just about all your insurance needs. That means I can help you reduce and high costs out of Life, Health, Homeowners, Business and Auto Insurance. Why not get me a call."

JOHN HAMILTON
PHONE: 322-7061

Allstate
Auto Insurance Companies
Northbrook, Illinois

WATCH CLEANING SPECIAL
cleaned—oiled—adjusted

Timex - - - \$3.50

JEWEL MOVEMENT - - - \$6.50

Rings Cleaned — No Charge

BEN A. SMITLEY — CASH & SAVE JEWELERS
798 LONGWOOD PLAZA (17-92) PH. 821-2281

SUMMER'S COMING

Let us have everything ready for you

Our new IMPROVED SERVICE is the BEST around. TRY US.

SANFORD BOAT WORKS

Hwy. 415 or Ocean Bridge 322-4412

Service Special

REGULAR \$2

GREASE JOB

\$1.00

oil and filter extra

HENPHILL

PORTLAND
OLYMPIA
OLYMPIA

1501 W. First—Sanford
Phone 322-4231 or 425-2342

HUNTING FOR BUSINESS?

You Can't Miss — It's Open Season — Advertise in the SANFORD HERALD

For Ad and Feature Story on this page... CALL 322-2611 or 425-9720

MAY WE BE OF SERVICE!

GOLF PRODUCTS • TRAVEL • ACCOMMODATIONS • RESERVATIONS • RENTALS

WES-KAY WASHETERIAS

2918 FRENCH AVE. & 111 WEST 27th ST.

SANFORD'S ONLY COIN LAUNDRIES WITH

SINGLE LOAD WASHERS 15c (YOU PAY 25c ANYWHERE ELSE)

DOUBLE LOAD WASHERS 25c (YOU PAY 35c OR 50c ANYWHERE ELSE)

WHY PAY MORE

I Was A Hophead.. Four Puffs.. For A News Story

(Editor's note: The writer of the following article, of course, wishes to remain anonymous, and his newspaper people always... are willing to try anything for a news story. This article endeavors to show that college kids or anyone else who think they are simply plain stupid.)

By ANNE DEMEUS
Can an under-20 housewife infiltrate the student drug world and emerge unscathed by the encounter?

Definitely YES — especially when she feels so ally that she gives up the habit after the fourth puff of pot.

I recently had the rare opportunity — rare for a person whose life career centers around changing diapers, peeling potatoes, and scrubbing toilets — to descend into the depth of today's most popular

inquiry — marijuana.

Like so many, I had heard all about Lucy in the Sky with Diamonds, speed, and grass. The only diamonds I had ever encountered were in engagement rings, my speed is about 45 mph before the motor starts knocking, and grass is what grows between the sandspurs in my front yard.

But good of Anne will try anything once, especially if it doesn't involve work or much money. So when a young friend offered to share some pot — FOR FREE — I decided to give it a whirl.

After all, as all the militant feminists point out, the average American housewife has all her brains and talents degenerate after marriage. During the day, the conversation level around my house is "Da-da" and "Cookie."

So to bring myself up to the standards of today's youthful

"in" group, I decided to share a little less. As all the student militants — almost as militant as the feminist — point out, marijuana is non-habit-forming, non-toxic, and non-fattening. Now, I admit, I figured that if we got busted I would claim that I just came in to sell Avon products.

The instructions were these (as I already knew from all the anti-drug articles that also tell you just how to obtain them

and get them into your system): Inhale all the way down to the bottom of your lungs, dragging it straight in with no stops along the way, hold your breath until you can't stand it anymore, then exhale.

They were right — you can't get hooked on marijuana; Long comes will get you before you get that fact.

I've been smoking — and inhaling the smoke — for 10 years now, and in my expert opinion NOTHING burns and chokes as much as that hot drag straight down the throat. It would be interesting to see the statistics on the admissions to the college infirmary of bronchitis and chronic cough cases now that pot is on the campus.

All sorts of other diseases must be on the increase, too, since Asaphus gold etiquette demands that the host pass (Continued on Page 2A, Col. 1)

Industry Begins To Hum At Sanford Airport

WASHINGTON (AP) — The Pentagon announced today all available evidence indicates North Korea shot down the early EC21 aircraft with its crew of 31.

The Pentagon said there apparently are no survivors.

Official confirmation of the shooting, heralded by North Korea, came in a straight-laced 2½-page statement that avoided any discussion of political or diplomatic ramifications.

"All evidence now available to us, including North Korean leads us to believe that the aircraft was shot down by North Korean aircraft," the statement said.

The statement, read by Pentagon spokesman Daniel Z. Henkin, offered no other details on how the plane was destroyed, whether by aircraft cannon fire or plane launched missile.

North Korean radio broadcasts monitored by Tokyo said the intelligence gathering EC21 intruded North Korean airspace. The Pentagon flatly denied the statement.

The Pentagon reported earlier a Soviet ship had recovered what it described as an airplane parts but no survivors in the Sea of Japan 120 miles off the North Korean coast.

In its later statement, it amplified its contention the plane never entered North Korean airspace saying: "From a variety of sources, some of them aerial, we are able to confirm that at all times during its mission the aircraft was in international territorial air space of North Korea."

The Japanese Defense Agency said earlier today an American military radar in South Korea spotted a falling U.S. plane after it made contact with intercepting North Korean fighters.

The report said the North Korean plane over the Sea of Japan about 150 miles southeast of Chongjin, a North Korean port. The report said the plane was monitoring North Korean radio messages and studying radar stations in its air defenses. Henkin called it a routine reconnaissance mission.

Approved reasoning from residential to agriculture on lots one through six, Block B, Johnson's Poultry Farm, south of SH 434.

Adopted a resolution on the comprehensive plan for the county, both phases one and two.

On a three-to-two vote with Commissioners Greg Drummond, Robert Parker, and Edward Yarborough voting "yes" and John Alexander and Dan Pollam voting "no," rezoned the tract adjacent to Trinity Preparatory School RIA to permit construction of some 214 townhouses on the site.

In other hearings, the Board adopted a resolution on the rezoning of SH 436 and SH 434 from agriculture and commercial to RIAA residential. Rezoned the parcel including the westerly portion of Shale's Airport from agriculture to residential and a small portion on the west side of the old airport neighborhood commercial to allow service businesses. On the major tract is to be built a new subdivision of homes.

Continued until April 29 hearing on the request for rezoning of SH 436 and SH 434.

Adopted a resolution on the rezoning of the parcel for the county, both phases one and two.

On a three-to-two vote with Commissioners Greg Drummond, Robert Parker, and Edward Yarborough voting "yes" and John Alexander and Dan Pollam voting "no," rezoned the tract adjacent to Trinity Preparatory School RIA to permit construction of some 214 townhouses on the site.

In other hearings, the Board adopted a resolution on the rezoning of SH 436 and SH 434 from agriculture and commercial to RIAA residential. Rezoned the parcel including the westerly portion of Shale's Airport from agriculture to residential and a small portion on the west side of the old airport neighborhood commercial to allow service businesses. On the major tract is to be built a new subdivision of homes.

Continued until April 29 hearing on the request for rezoning of SH 436 and SH 434.

Adopted a resolution on the rezoning of the parcel for the county, both phases one and two.

On a three-to-two vote with Commissioners Greg Drummond, Robert Parker, and Edward Yarborough voting "yes" and John Alexander and Dan Pollam voting "no," rezoned the tract adjacent to Trinity Preparatory School RIA to permit construction of some 214 townhouses on the site.

In other hearings, the Board adopted a resolution on the rezoning of SH 436 and SH 434 from agriculture and commercial to RIAA residential. Rezoned the parcel including the westerly portion of Shale's Airport from agriculture to residential and a small portion on the west side of the old airport neighborhood commercial to allow service businesses. On the major tract is to be built a new subdivision of homes.

Continued until April 29 hearing on the request for rezoning of SH 436 and SH 434.

Adopted a resolution on the rezoning of the parcel for the county, both phases one and two.

On a three-to-two vote with Commissioners Greg Drummond, Robert Parker, and Edward Yarborough voting "yes" and John Alexander and Dan Pollam voting "no," rezoned the tract adjacent to Trinity Preparatory School RIA to permit construction of some 214 townhouses on the site.

In other hearings, the Board adopted a resolution on the rezoning of SH 436 and SH 434 from agriculture and commercial to RIAA residential. Rezoned the parcel including the westerly portion of Shale's Airport from agriculture to residential and a small portion on the west side of the old airport neighborhood commercial to allow service businesses. On the major tract is to be built a new subdivision of homes.

Continued until April 29 hearing on the request for rezoning of SH 436 and SH 434.

Adopted a resolution on the rezoning of the parcel for the county, both phases one and two.

On a three-to-two vote with Commissioners Greg Drummond, Robert Parker, and Edward Yarborough voting "yes" and John Alexander and Dan Pollam voting "no," rezoned the tract adjacent to Trinity Preparatory School RIA to permit construction of some 214 townhouses on the site.

In other hearings, the Board adopted a resolution on the rezoning of SH 436 and SH 434 from agriculture and commercial to RIAA residential. Rezoned the parcel including the westerly portion of Shale's Airport from agriculture to residential and a small portion on the west side of the old airport neighborhood commercial to allow service businesses. On the major tract is to be built a new subdivision of homes.

Continued until April 29 hearing on the request for rezoning of SH 436 and SH 434.

Adopted a resolution on the rezoning of the parcel for the county, both phases one and two.

On a three-to-two vote with Commissioners Greg Drummond, Robert Parker, and Edward Yarborough voting "yes" and John Alexander and Dan Pollam voting "no," rezoned the tract adjacent to Trinity Preparatory School RIA to permit construction of some 214 townhouses on the site.

In other hearings, the Board adopted a resolution on the rezoning of SH 436 and SH 434 from agriculture and commercial to RIAA residential. Rezoned the parcel including the westerly portion of Shale's Airport from agriculture to residential and a small portion on the west side of the old airport neighborhood commercial to allow service businesses. On the major tract is to be built a new subdivision of homes.

Continued until April 29 hearing on the request for rezoning of SH 436 and SH 434.

Adopted a resolution on the rezoning of the parcel for the county, both phases one and two.

On a three-to-two vote with Commissioners Greg Drummond, Robert Parker, and Edward Yarborough voting "yes" and John Alexander and Dan Pollam voting "no," rezoned the tract adjacent to Trinity Preparatory School RIA to permit construction of some 214 townhouses on the site.

In other hearings, the Board adopted a resolution on the rezoning of SH 436 and SH 434 from agriculture and commercial to RIAA residential. Rezoned the parcel including the westerly portion of Shale's Airport from agriculture to residential and a small portion on the west side of the old airport neighborhood commercial to allow service businesses. On the major tract is to be built a new subdivision of homes.

Continued until April 29 hearing on the request for rezoning of SH 436 and SH 434.

Adopted a resolution on the rezoning of the parcel for the county, both phases one and two.

On a three-to-two vote with Commissioners Greg Drummond, Robert Parker, and Edward Yarborough voting "yes" and John Alexander and Dan Pollam voting "no," rezoned the tract adjacent to Trinity Preparatory School RIA to permit construction of some 214 townhouses on the site.

In other hearings, the Board adopted a resolution on the rezoning of SH 436 and SH 434 from agriculture and commercial to RIAA residential. Rezoned the parcel including the westerly portion of Shale's Airport from agriculture to residential and a small portion on the west side of the old airport neighborhood commercial to allow service businesses. On the major tract is to be built a new subdivision of homes.

Continued until April 29 hearing on the request for rezoning of SH 436 and SH 434.

Adopted a resolution on the rezoning of the parcel for the county, both phases one and two.

On a three-to-two vote with Commissioners Greg Drummond, Robert Parker, and Edward Yarborough voting "yes" and John Alexander and Dan Pollam voting "no," rezoned the tract adjacent to Trinity Preparatory School RIA to permit construction of some 214 townhouses on the site.

In other hearings, the Board adopted a resolution on the rezoning of SH 436 and SH 434 from agriculture and commercial to RIAA residential. Rezoned the parcel including the westerly portion of Shale's Airport from agriculture to residential and a small portion on the west side of the old airport neighborhood commercial to allow service businesses. On the major tract is to be built a new subdivision of homes.

Continued until April 29 hearing on the request for rezoning of SH 436 and SH 434.

Adopted a resolution on the rezoning of the parcel for the county, both phases one and two.

On a three-to-two vote with Commissioners Greg Drummond, Robert Parker, and Edward Yarborough voting "yes" and John Alexander and Dan Pollam voting "no," rezoned the tract adjacent to Trinity Preparatory School RIA to permit construction of some 214 townhouses on the site.

In other hearings, the Board adopted a resolution on the rezoning of SH 436 and SH 434 from agriculture and commercial to RIAA residential. Rezoned the parcel including the westerly portion of Shale's Airport from agriculture to residential and a small portion on the west side of the old airport neighborhood commercial to allow service businesses. On the major tract is to be built a new subdivision of homes.

Continued until April 29 hearing on the request for rezoning of SH 436 and SH 434.

Adopted a resolution on the rezoning of the parcel for the county, both phases one and two.

On a three-to-two vote with Commissioners Greg Drummond, Robert Parker, and Edward Yarborough voting "yes" and John Alexander and Dan Pollam voting "no," rezoned the tract adjacent to Trinity Preparatory School RIA to permit construction of some 214 townhouses on the site.

In other hearings, the Board adopted a resolution on the rezoning of SH 436 and SH 434 from agriculture and commercial to RIAA residential. Rezoned the parcel including the westerly portion of Shale's Airport from agriculture to residential and a small portion on the west side of the old airport neighborhood commercial to allow service businesses. On the major tract is to be built a new subdivision of homes.

Continued until April 29 hearing on the request for rezoning of SH 436 and SH 434.

Adopted a resolution on the rezoning of the parcel for the county, both phases one and two.

On a three-to-two vote with Commissioners Greg Drummond, Robert Parker, and Edward Yarborough voting "yes" and John Alexander and Dan Pollam voting "no," rezoned the tract adjacent to Trinity Preparatory School RIA to permit construction of some 214 townhouses on the site.

In other hearings, the Board adopted a resolution on the rezoning of SH 436 and SH 434 from agriculture and commercial to RIAA residential. Rezoned the parcel including the westerly portion of Shale's Airport from agriculture to residential and a small portion on the west side of the old airport neighborhood commercial to allow service businesses. On the major tract is to be built a new subdivision of homes.

Continued until April 29 hearing on the request for rezoning of SH 436 and SH 434.

Adopted a resolution on the rezoning of the parcel for the county, both phases one and two.

On a three-to-two vote with Commissioners Greg Drummond, Robert Parker, and Edward Yarborough voting "yes" and John Alexander and Dan Pollam voting "no," rezoned the tract adjacent to Trinity Preparatory School RIA to permit construction of some 214 townhouses on the site.

In other hearings, the Board adopted a resolution on the rezoning of SH 436 and SH 434 from agriculture and commercial to RIAA residential. Rezoned the parcel including the westerly portion of Shale's Airport from agriculture to residential and a small portion on the west side of the old airport neighborhood commercial to allow service businesses. On the major tract is to be built a new subdivision of homes.

Continued until April 29 hearing on the request for rezoning of SH 436 and SH 434.

Adopted a resolution on the rezoning of the parcel for the county, both phases one and two.

On a three-to-two vote with Commissioners Greg Drummond, Robert Parker, and Edward Yarborough voting "yes" and John Alexander and Dan Pollam voting "no," rezoned the tract adjacent to Trinity Preparatory School RIA to permit construction of some 214 townhouses on the site.

In other hearings, the Board adopted a resolution on the rezoning of SH 436 and SH 434 from agriculture and commercial to RIAA residential. Rezoned the parcel including the westerly portion of Shale's Airport from agriculture to residential and a small portion on the west side of the old airport neighborhood commercial to allow service businesses. On the major tract is to be built a new subdivision of homes.

Continued until April 29 hearing on the request for rezoning of SH 436 and SH 434.

Adopted a resolution on the rezoning of the parcel for the county, both phases one and two.

On a three-to-two vote with Commissioners Greg Drummond, Robert Parker, and Edward Yarborough voting "yes" and John Alexander and Dan Pollam voting "no," rezoned the tract adjacent to Trinity Preparatory School RIA to permit construction of some 214 townhouses on the site.

In other hearings, the Board adopted a resolution on the rezoning of SH 436 and SH 434 from agriculture and commercial to RIAA residential. Rezoned the parcel including the westerly portion of Shale's Airport from agriculture to residential and a small portion on the west side of the old airport neighborhood commercial to allow service businesses. On the major tract is to be built a new subdivision of homes.

Continued until April 29 hearing on the request for rezoning of SH 436 and SH 434.

Adopted a resolution on the rezoning of the parcel for the county, both phases one and two.

On a three-to-two vote with Commissioners Greg Drummond, Robert Parker, and Edward Yarborough voting "yes" and John Alexander and Dan Pollam voting "no," rezoned the tract adjacent to Trinity Preparatory School RIA to permit construction of some 214 townhouses on the site.

In other hearings, the Board adopted a resolution on the rezoning of SH 436 and SH 434 from agriculture and commercial to RIAA residential. Rezoned the parcel including the westerly portion of Shale's Airport from agriculture to residential and a small portion on the west side of the old airport neighborhood commercial to allow service businesses. On the major tract is to be built a new subdivision of homes.

Continued until April 29 hearing on the request for rezoning of SH 436 and SH 434.

Adopted a resolution on the rezoning of the parcel for the county, both phases one and two.

On a three-to-two vote with Commissioners Greg Drummond, Robert Parker, and Edward Yarborough voting "yes" and John Alexander and Dan Pollam voting "no," rezoned the tract adjacent to Trinity Preparatory School RIA to permit construction of some 214 townhouses on the site.

In other hearings, the Board adopted a resolution on the rezoning of SH 436 and SH 434 from agriculture and commercial to RIAA residential. Rezoned the parcel including the westerly portion of Shale's Airport from agriculture to residential and a small portion on the west side of the old airport neighborhood commercial to allow service businesses. On the major tract is to be built a new subdivision of homes.

Continued until April 29 hearing on the request for rezoning of SH 436 and SH 434.

Adopted a resolution on the rezoning of the parcel for the county, both phases one and two.

On a three-to-two vote with Commissioners Greg Drummond, Robert Parker, and Edward Yarborough voting "yes" and John Alexander and Dan Pollam voting "no," rezoned the tract adjacent to Trinity Preparatory School RIA to permit construction of some 214 townhouses on the site.

In other hearings, the Board adopted a resolution on the rezoning of SH 436 and SH 434 from agriculture and commercial to RIAA residential. Rezoned the parcel including the westerly portion of Shale's Airport from agriculture to residential and a small portion on the west side of the old airport neighborhood commercial to allow service businesses. On the major tract is to be built a new subdivision of homes.

Continued until April 29 hearing on the request for rezoning of SH 436 and SH 434.

Adopted a resolution on the rezoning of the parcel for the county, both phases one and two.

On a three-to-two vote with Commissioners Greg Drummond, Robert Parker, and Edward Yarborough voting "yes" and John Alexander and Dan Pollam voting "no," rezoned the tract adjacent to Trinity Preparatory School RIA to permit construction of some 214 townhouses on the site.

In other hearings, the Board adopted a resolution on the rezoning of SH 436 and SH 434 from agriculture and commercial to RIAA residential. Rezoned the parcel including the westerly portion of Shale's Airport from agriculture to residential and a small portion on the west side of the old airport neighborhood commercial to allow service businesses. On the major tract is to be built a new subdivision of homes.

Continued until April 29 hearing on the request for rezoning of SH 436 and SH 434.

Adopted a resolution on the rezoning of the parcel for the county, both phases one and two.

On a three-to-two vote with Commissioners Greg Drummond, Robert Parker, and Edward Yarborough voting "yes" and John Alexander and Dan Pollam voting "no," rezoned the tract adjacent to Trinity Preparatory School RIA to permit construction of some 214 townhouses on the site.

In other hearings, the Board adopted a resolution on the rezoning of SH 436 and SH 434 from agriculture and commercial to RIAA residential. Rezoned the parcel including the westerly portion of Shale's Airport from agriculture to residential and a small portion on the west side of the old airport neighborhood commercial to allow service businesses. On the major tract is to be built a new subdivision of homes.

Continued until April 29 hearing on the request for rezoning of SH 436 and SH 434.

Adopted a resolution on the rezoning of the parcel for the county, both phases one and two.

On a three-to-two vote with Commissioners Greg Drummond, Robert Parker, and Edward Yarborough voting "yes" and John Alexander and Dan Pollam voting "no," rezoned the tract adjacent to Trinity Preparatory School RIA to permit construction of some 214 townhouses on the site.

In other hearings, the Board adopted a resolution on the rezoning of SH 436 and SH 434 from agriculture and commercial to RIAA residential. Rezoned the parcel including the westerly portion of Shale's Airport from agriculture to residential and a small portion on the west side of the old airport neighborhood commercial to allow service businesses. On the major tract is to be built a new subdivision of homes.

Continued until April 29 hearing on the request for rezoning of SH 436 and SH 434.

Adopted a resolution on the rezoning of the parcel for the county, both phases one and two.

On a three-to-two vote with Commissioners Greg Drummond, Robert Parker, and Edward Yarborough voting "yes" and John Alexander and Dan Pollam voting "no," rezoned the tract adjacent to Trinity Preparatory School RIA to permit construction of some 214 townhouses on the site.

In other hearings, the Board adopted a resolution on the rezoning of SH 436 and SH 434 from agriculture and commercial to RIAA residential. Rezoned the parcel including the westerly portion of Shale's Airport from agriculture to residential and a small portion on the west side of the old airport neighborhood commercial to allow service businesses. On the major tract is to be built a new subdivision of homes.

Continued until April 29 hearing on the request for rezoning of SH 436 and SH 434.

Adopted a resolution on the rezoning of the parcel for the county, both phases one and two.

On a three-to-two vote with Commissioners Greg Drummond, Robert Parker, and Edward Yarborough voting "yes" and John Alexander and Dan Pollam voting "no," rezoned the tract adjacent to Trinity Preparatory School RIA to permit construction of some 214 townhouses on the site.

In other hearings, the Board adopted a resolution on the rezoning of SH 436 and SH 434 from agriculture and commercial to RIAA residential. Rezoned the parcel including the westerly portion of Shale's Airport from agriculture to residential and a small portion on the west side of the old airport neighborhood commercial to allow service businesses. On the major tract is to be built a new subdivision of homes.

Continued until April 29 hearing on the request for rezoning of SH 436 and SH 434.

Adopted a resolution on the rezoning of the parcel for the county, both phases one and two.

On a three-to-two vote with Commissioners Greg Drummond, Robert Parker, and Edward Yarborough voting "yes" and John Alexander and Dan Pollam voting "no," rezoned the tract adjacent to Trinity Preparatory School RIA to permit construction of some 214 townhouses on the site.

In other hearings, the Board adopted a resolution on the rezoning of SH 436 and SH 434 from agriculture and commercial to RIAA residential. Rezoned the parcel including the westerly portion of Shale's Airport from agriculture to residential and a small portion on the west side of the old airport neighborhood commercial to allow service businesses. On the major tract is to be built a new subdivision of homes.

Continued until April 29 hearing on the request for rezoning of SH 436 and SH 434.

Adopted a resolution on the rezoning of the parcel for the county, both phases one and two.

On a three-to-two vote with Commissioners Greg Drummond, Robert Parker, and Edward Yarborough voting "yes" and John Alexander and Dan Pollam voting "no," rezoned the tract adjacent to Trinity Preparatory School RIA to permit construction of some 214 townhouses on the site.

In other hearings, the Board adopted a resolution on the rezoning of SH 436 and SH 434 from agriculture and commercial to RIAA residential. Rezoned the parcel including the westerly portion of Shale's Airport from agriculture to residential and a small portion on the west side of the old airport neighborhood commercial to allow service businesses. On the major tract is to be built a new subdivision of homes.

Continued until April 29 hearing on the request for rezoning of SH 436 and SH 434.

Adopted a resolution on the rezoning of the parcel for the county, both phases one and two.

On a three-to-two vote with Commissioners Greg Drummond, Robert Parker, and Edward Yarborough voting "yes" and John Alexander and Dan Pollam voting "no," rezoned the tract adjacent to Trinity Preparatory School RIA to permit construction of some 214 townhouses on the site.

In other hearings, the Board adopted a resolution on the rezoning of SH 436 and SH 434 from agriculture and commercial to RIAA residential. Rezoned the parcel including the westerly portion of Shale's Airport from agriculture to residential and a small portion on the west side of the old airport neighborhood commercial to allow service businesses. On the major tract is to be built a new subdivision of homes.

Continued until April 29 hearing on the request for rezoning of SH 436 and SH 434.

Adopted a resolution on the rezoning of the parcel for the county, both phases one and two.

On a three-to-two vote with Commissioners Greg Drummond, Robert Parker, and Edward Yarborough voting "yes" and John Alexander and Dan Pollam voting "no," rezoned the tract adjacent to Trinity Preparatory School RIA to permit construction of some 214 townhouses on the site.

In other hearings, the Board adopted a resolution on the rezoning of SH 436 and SH 434 from agriculture and commercial to RIAA residential. Rezoned the parcel including the westerly portion of Shale's Airport from agriculture to residential and a small portion on the west side of the old airport neighborhood commercial to allow service businesses. On the major tract is to be built a new subdivision of homes.

Continued until April 29 hearing on the request for rezoning of SH 436 and SH 434.

Adopted a resolution on the rezoning of the parcel for the county, both phases one and two.

On a three-to-two vote with Commissioners Greg Drummond, Robert Parker, and Edward Yarborough voting "yes" and John Alexander and Dan Pollam voting "no," rezoned the tract adjacent to Trinity Preparatory School RIA to permit construction of some 214 townhouses on the site.

In other hearings, the Board adopted a resolution on the rezoning of SH 436 and SH 434 from agriculture and commercial to RIAA residential. Rezoned the parcel including the westerly portion of Shale's Airport from agriculture to residential and a small portion on the west side of the old airport neighborhood commercial to allow service businesses. On the major tract is to be built a new subdivision of homes.

Continued until April 29 hearing on the request for rezoning of SH 436 and SH 434.

Adopted a resolution on the rezoning of the parcel for the county, both phases one and two.

On a three-to-two vote with Commissioners Greg Drummond, Robert Parker, and Edward Yarborough voting "yes" and John Alexander and Dan Pollam voting "no," rezoned the tract adjacent to Trinity Preparatory School RIA to permit construction of some 214 townhouses on the site.

In other hearings, the Board adopted a resolution on the rezoning of SH 436 and SH 434 from agriculture and commercial to RIAA residential. Rezoned the parcel including the westerly portion of Shale's Airport from agriculture to residential and a small portion on the west side of the old airport neighborhood commercial to allow service businesses. On the major tract is to be built a new subdivision of homes.

Continued until April 29 hearing on the request for rezoning of SH 436 and SH 434.

Adopted a resolution on the rezoning of the parcel for the county, both phases one and two.

On a three-to-two vote