

New Tourist Hotel Is To Be Monument To Civic Co-Operation

Realty Company Officials Are All Prominent Men In Business Circles

Ord Business Moves Eastward

Being Sold Just Pay For Tract Not For Profit

part inasmuch as it provided for the opening of First Street from Sanford Avenue east. This extension of First Street opened up a new residential and business section in which the site selected by Mr. Hulick is in the center.

Two of Sanford's prominent bankers, Forrest Lake, president of the Seminole County Bank and F. P. Foster, president of the First National bank were selected as president and vice president of the company respectively. B. F. Whitner, cashier of the First National bank is secretary of the company and A. R. Key, cashier of the Seminole County bank, is treasurer. The company's directors, besides the officers mentioned, comprise Edward Higgins, president of the Sanford Chamber of Commerce; R. H. Berg, business manager of The Sanford Herald; George A. DeCottes, city attorney and H. T. Bodwell, president and treasurer of the Bodwell Realty Company, Mr. Bodwell is general manager of the Sanford Hotel-Realty Company.

The company immediately replatted the property and set aside a site 480 by 350 feet for a tourist hotel. The hotel is to be on the lake front and will cost \$500,000 when completed. The site for the new hotel was presented to the builders and the cost proportioned among the remaining lots of the hotel section. The lots were placed at a low figure as the original program was intended to just pay for the entire property and not to operate the project for a gain to any of the organizers in the movement.

Then followed an advertising campaign in the newspapers of Florida that focused attention on Sanford. This brought numbers of out of town purchasers and local men, realizing the importance of the project and the value of the business and residential lots surrounding the hotel site, invested heavily.

Mayor Forrest Lake, for whom the hotel is to be named, sums up the situation as follows:

"The expansion of Sanford's business section easterly to the new tourist hotel site, marks an important step in our city's progress. First street is already congested and the addition of a limited new business area fills a long-felt want."

(Continued on Page 3)

PROSPERITY ERA OF CITY BROUGHT BY FREEZE OF '95

Orange Trees Of 1895 Are Replaced In Section by Four Crops Yearly; Recovery Is Made With Great Rapidly

Virtually driven in truck raising which caused heavy damage to citrus groves throughout central Florida, Sanford had never experienced a crop failure since that time. The change from citrus to vegetable was almost as rapid and quite as thorough as was the freeze by which it was caused.

It had been discovered in the early eighties that under the Sanford section, there was an abundance of artesian water. The use of this water for kitchen purposes and for irrigating groves became general.

The next year after the freeze Rev. Moore of this city laid some wooden pipes under part of his yard and drained the water off when he needed it. He soon discovered that these pipes not only carried off the surplus water that fell on his garden during heavy or prolonged rains but water seeped through in dry weather and his ground was in condition for cultivation much sooner than his neighbor's lands. He had discovered the principle of sub-irrigation through pipes, crude as his work. Others saw, were convinced and bought wooden pipes for their lands.

Letuce First Tried

Letuce was tried first and it grew with startling rapidity. The first shipper of head letuce, J. C. Pace, received an exceptionally large price for it and the industry was established.

The first celery was shipped by B. F. Whitner, E. S. Harrold, and J. N. Whitner. In 1892 L. J. Phillips brought to Sanford from Kalamazoo, Mich., long famous for celery, plants for use in the Sanford section. The imported stock thrived under Florida conditions and in 1899 the first car load of celery was shipped. Since that time farm after farm has been tilled and prepared for sub-irrigation, sub-drainage, and sub-aeration, artesian wells are as common now as flowers in the city gardens and lawns, and three thousand acres of this intensively farmed trucking land is annually being made to produce two, three and even four money crops of wanted winter and early spring grown vegetables.

(Continued on page 2)

CITY OFFICIALS OF SANFORD

- Mayor—Forrest Lake.
- Commissioners—Forrest Lake, S. O. Chase, C. J. Marshall.
- City Manager—W. B. Williams.
- Clerk, Auditor and Assessor—L. R. Phillips.
- Tax Collector—Alfred Foster, Ellen Hoy, Deputy.
- City Attorney—G. A. DeCottes.
- Chief of Police—R. G. Williams.
- Chief of Fire Department—G. P. Paxton.
- City Engineer—F. T. Williams.
- City Physician—Dr. W. T. Langley.
- Sanitary Inspector—James Moughton.
- Municipal Judge—W. E. White.

SKETCHES OF GROWING TOWNS OF SEMINOLE COUNTY ARE GIVEN

There are nine important and growing community centers in Seminole county besides Sanford. In order of their size they are: Oviedo, Altamonte Springs, Longwood, Geneva, Chuluota, Lake Monroe, Forest City and Paola.

Oviedo, Altamonte Springs, Longwood, Geneva and Chuluota are treated specially in this issue and for this season merely counted in this account of the interests of nine places.

Here are short sketches of the other four towns:

Lake Monroe.

Monroe is a coming little town about five miles from Sanford on a good hard road, the main line of the Atlantic Coast Line Railroad, and on the southeast shore of Lake Monroe. It is in the midst of the flowing water region of the district and is beginning to raise and ship winter vegetables; in fact for some years the industry of trucking has been steadily increasing in this community.

It is fast becoming an important shipping point, for in addition to the trucking tonnage, there are thousands of boxes of citrus fruit raised in the vicinity. It has its own store and postoffice, a church or two and a good rural school which things are appreciated by the fine class of people living in the neighborhood.

Forest City.

Forest City is the center of a cause of the beautiful oaks that are in and around it, is near the famous Wekiva Springs, and also not far distant from Palm Spring, both of which are great assets to the county because of their ability

CLIMATE MAKES SANFORD SOUGHT AS HEALTH AID

Average Monthly Rainfall Is 4.7 Inches While Temperature Hovers Around the 71 Mark; Death Rate Is Low

(By C. J. MOTES)

With an average monthly temperature of 71 degrees, sunshine just as luring, breezes just as steady as ever before, Sanford again finds its climatic attractions being sought. And rightly so, as there is something truly wonderful in the combination which opposes the equable climate in this interior water served city.

Average rainfall of 4.7 inches per month, the weather is never stifling hot and sun stroke is unknown in Sanford. Few resort cities can equal the year round comfort enjoyed by all who make this city their home.

Well drained farms occupy the lands in the Sanford section and there are no marshes to create unsanitary conditions. The odors brought in by the breezes are scented with orange or possibly pines or of that "smell of Florida" which is so sought and so hard to describe.

The contented and healthy people of Seminole county, of which Sanford is the county seat, the very low death rate and the almost entire freedom of this section from all fevers, are well known and the section is recognized as a most desirable place in which to live.

Many have regained health which had been lost elsewhere, in fact, Sanford's first reputation was as a health resort. Many suffering with asthma, throat or pulmonary trouble have been benefited or cured by time passed in Sanford.

Located on the shore of Lake Monroe and at the head of navigation of the St. Johns River, surrounded by pine and oak groves, orange groves and celery and other truck farms, Sanford has more reason to be considered as a health resort city today than ever before. With a fine half-million dollar tourist hotel now under construction, the call to the visitor to spend at least a part of his time in Florida will be heeded as never before.

Seven scientific expeditions are combing the wilds in search of a vanished civilization, and not one of them thought of starting in with Herrin, Illinois. — Arkansas Gazette.

Lake Mary.

Lake Mary is one of the "summer resort" places of Sanford. Situated on the shore of a beautiful sandy bottom clear lake, only five miles from the city, it has been chosen as the place for pleasure gatherings. A fine pavilion and bathing place is there, a skating rink, and other amusement provisions with the usual refreshment and luncheon requirements. Good music is provided and several nights in the week dancing and other pleasure parties are committal there.

The place is also on the Atlantic Coast Line Railroad, and is in the midst of a beautiful and productive citrus region. There is a good store and postoffice at Lake Mary, and the place is rapidly growing both in population and popularity.

Paola.

Another fine healthful and industrious agricultural and growing center in the county is Paola, six

(Continued on page 2)

Production of Celery In Seminole County Is Matter Of Science

Distance Between Sanford and Other Points In Florida

Tampa	125
Orlando	23
DeLand	15
Jacksonville	150
Winter Park	18
Ocala	63
Miami	284
Altamonte Springs	13
Oviedo	19
Mt. Dora	20
Easton	30
Palatka	90
Enterprise	12
St. Augustine	118
West Palm Beach	217
Lakeland	72
Leesburg	47
St. Petersburg	165
Gainesville	128
Lake City	177

Sanford Ships Most Of World's Celery

Records kept by the United States Department of Agriculture prove Sanford to be the largest shipping point of celery in the world. The huge shipments have made necessary an icing plant which, also, is the largest of its kind in the country.

Large though the shipments are, the trucking district in Sanford has never approached its capacity. There are only about 3,000 acres that are under the intensive cultivation that lettuce and celery require while there are 7,000 acres more of land equally as fine that is undeveloped.

Under all of this land there is a supply of artesian water sufficient for irrigation purposes.

Three hundred additional acres will be brought under cultivation in the Sanford area before 1926.

Though essentially of agricultural nature, the cultivation of celery in Seminole county partakes of the methods of industry, science and engineering. Growers are able to determine almost to a day, the day on which their crop will be ready for cutting while entering into the production thereof are such factors as sub-irrigation, sub-aeration and sub-drainage.

Celery is the money crop of this section. Growers plant both winter and early spring crops. The plants are set in by hand, 60,000 plants to the acre. The date for the shipment of celery each year is advanced. Formerly the Sanford growers did not ship celery until after the first of February, whereas as the past three seasons the first car of celery has left Sanford as early as Jan. 1.

The average yield per acre for the section is 700 crates which is equivalent to two car loads there being 325 crates to the car. The growers pay freight bills on a maximum of 350 crates. The average price which celery brought during the 1923-24 season was \$2.00. This year the price is much higher and recently reached \$2.75 a crate. The cost of raising and shipping celery is \$600 an acre and even with this great initial expense the growers in many cases average a net profit of \$1,000 an acre from their celery crop.

The Sanford section pays the Atlantic Coast Line Railway in freight each year approximately \$2,000,000 and according to high officials of the road the revenue from the Sanford area before 1926.

(Continued on Page 3)

Sanford Farmers Exchange

Originators of Packing House Packed, Washed, Pre-cooled Celery at the Shipping End.

Our Well Known Brands Are—

BLUE RIBBON BRAND

STAG BRAND

BULLDOG BRAND

(Washed, Precooled and Bunched)

(Washed and Precooled)

(Precooled)

Sanford, Florida

Phone 11 Precooler Phone 2900

A Saving Account Here Is Like The Sunshine

It promotes your growth and happiness. It never fails you. It helps your plans grow to success. It Brings brightness. It helps the whole world as well as yourself.

Regular deposits here will grow to thousands as the years go by. Happy independence will be yours and at a small price.

DON'T SPEND IT ALL

Sanford Loan & Sav. Co.

FLORIDA CONSTITUTIONAL AMENDMENT NO INHERITANCE TAX NO INCOME TAX FLORIDA—36 HOURS FROM 60,000,000 PEOPLE

SANFORD GROVE

IN THE SUBURBS OF THE CITY OF

**Sanford, Seminole County,
Florida**

SECTION ONE NOW OPEN FOR INSPECTION

**GENEVA STREET IS NOW BEING GRADED RIGHT
THROUGH OUR PROPERTY**

Buy Here For Health, Profit and Pleasure

“Live In A Park”

SANFORD GROVE

A PLACE FOR HOMES

Average Prices
of All Our Lots
are About

\$250

EACH

Some Lots are
Priced as Low
as \$200 each

It is the intention of the owners and selling agents to begin construction within a very short period of a number of handsome homes at Sanford Grove. Those seeking ideal homes within easy reach of the center of the City of Sanford will do well to examine this property at once. We will prepare plans subject to your own approval, without expense to the purchaser for supervision and will erect these houses for those who can make a reasonably small initial payment, and the balance of the purchase price may be paid for monthly, almost the same as rent, giving the home seeker a number of years to pay for his home and thus become entirely independent.

- Large Lots
- Low Prices
- Easy Terms
- Property Restricted
- High Elevation
- Beautiful Views
- All Year Climate
- All Improvements

How to Get There

Drive straight out Sanford Avenue to Geneva Street, turn left (east) to Mellonville Avenue and follow our large signs to Sanford Grove.

The new Forrest Lake Hotel will be erected within a short distance of Sanford Grove and of course will cause a great increase in values all through this section. We reserve the right to raise prices on all of the balance of the property, as soon as our program of improvement has been completely carried out.

An ideal homesite adjacent to the city of Sanford, the Celery Center. Within easy reach of the center of the city.

Ask for a copy of the restrictions on Sanford Grove, and thus assure yourself of the high grade of improvements at this property.

Twenty minutes walk or six minutes auto ride from the center of the city of Sanford, Lake Monroe and St. Johns River. Beautiful Golf Course, boating, bathing, yachting, hunting and fishing in season—Rod and Gun Club—Fine Roads—all amusements and sports.

Cut This Out

Mail This Coupon To
 Florida Realty Associates, Inc.
 Hotel Valdez Lobby, Sanford, Florida

Please send me full details and prices of lots at Sanford Grove.

Name

Address

Watch Sanford Grove Grow

FOR MAPS, PRICE LISTS, PHOTOS, COUPLETS, HOUSE PLANS, AND OTHER INFORMATION APPLY TO

FLORIDA REALTY ASSOCIATES, INC.

EXECUTIVE OFFICES

1132-1134 Land Title Building, Philadelphia, Pa., and 122 S. Palmetta Avenue, Daytona, Florida. Miami Office, 146 146 N. E. 2nd Avenue

Developers and Selling Agents

JOSEPH L. BAUM, General Sales Director

FIELD OFFICE

Hotel Valdez Lobby, Sanford, Florida

ORANGE FRUIT IS THE PRODUCT AROUND GENEVA

Geneva Grows More Oranges In Proportion To Population Than Any Other Community In State Of Florida

Geneva, not in Italy, but in Orange County, "Geneva" not a city but a village 13 miles from Sanford where more citrus fruit is grown, boxed and shipped in proportion to the population than from any other spot in the state.

One hundred thousand boxes a year is the yield, two large packing houses being required to prepare this harvest for the trip to market. The crop equals about 200 orange carloads, which would impose two monster freight trains complete.

All this comes from a section in the very center of the "orange belt," because Geneva was a settlement long before there was any thing but trails through the heavy pine forest of that region, and it is still a well once a week from Ocala and its supplies from Sanford, Ocala, through Lake Jessup and the St. Johns river and Lake Moniac, some 18 miles by water. The distance is 12 miles from Sanford, Ocala to Chuluota, 9 miles to Geneva, all of which are reached by fine hard surfaced roads and is counted as nothing for a resident of Geneva to be in Sanford in an hour and at home the next day. In 1925 in this land of good soil and real opportunities.

Just think of "what was" as against "what is." J. J. Weeks, postmaster and merchant, who has been here since the start of the place years ago, describes the original Geneva as a "real hunter's paradise." Game of all sorts abounded in the forest and the lake and river teeming with the finest of fish. He speaks of the old times when clearing the primeval forest for cultivation was done at a cost of about \$30 an acre average, the orange groves being cut and rolled and fenced to make fences. In this time, he says, a good beet could be raised and divided among the neighbors, and forest land was at a cost of \$1.25 per acre from stump to sunset, the yield being in potatoes, syrup, or pieces of meat, either bacon or ham. School was taught in a log schoolhouse, he says, and the boat was a good one all the time. However, all that is now changed. But in the transformation several fortunes have been made since the time timber, the resin and turpentine taken from the old forest, which have now mysteriously disappeared to make way for the more modern growth of citrus trees.

Scarcity Of City Fruit Bought By Freeze During Year 1898

(Continued from Page One) In every city and town in the state it is now able to have Sanborn fresh vegetables on the table year around, once in a while during winter and spring. But celery is not the only crop returned into big money in the spot where a few years ago the gods thought they could not raise anything but oranges. Tomatoes, the thousand crates, beans, cabbage, egg plant, lettuce, squash, and radishes, all these, and others go out from Sanford every season; making this section's big bill for car the largest of any initial icing station in the state.

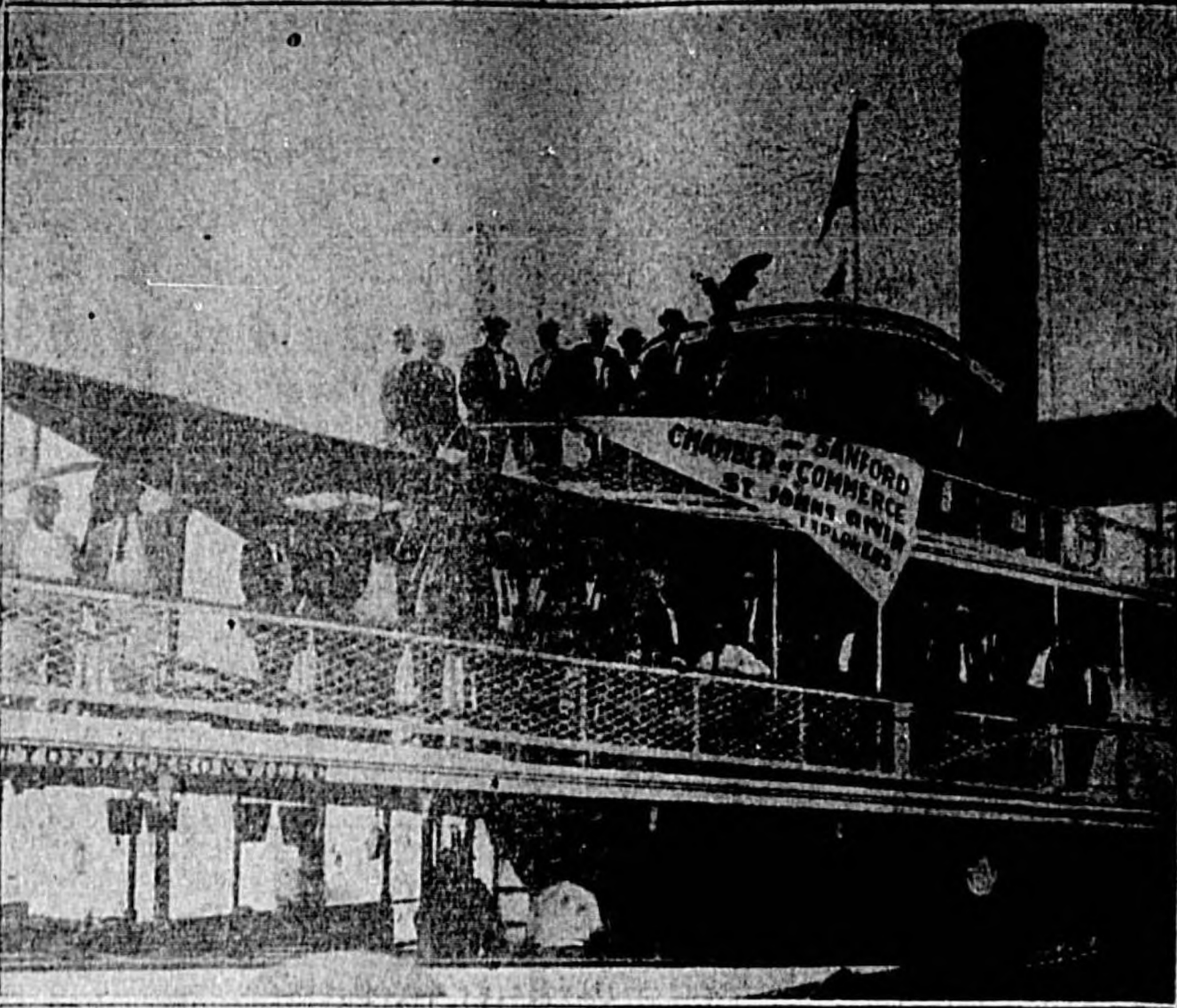
Two years after the shipment of the first carload which came from the area tract, the cry was raised for the first time that "Sanborn was overdoing this thing." When 9 years had been shipped in a single season, those were those who held the opinion that the industry had received a deathblow through the overplanting of a few. The five acre crop and the 500 or more were sold and the demand continued to grow until in the seasons of 1916 and 1917 Sanford was shipping 3,000 cars of all kinds of vegetables, of which almost 900 were celery. Standby, from an acre of new land was cleared and drained and irrigated, and today something like 3,500 acres are under intensive cultivation in the inland area along producing 6,000 cars of truck this season while in other places in the county, notably, Ocala, other large regions are in cultivation.

Seminole Has Many Small Progressive Community Centers

(Continued from page 1) Here you on the Atlantic Coast near Ft. Pierce. The place surrounded by beautiful lakes, full of fine fish and when it begins better known will attract many tourists every year. Paola is a town and a postoffice, and several more of good people who are enthusiastically engaged in bringing their section up to the high development status of the state.

Some Smaller Places. In addition to these places enumerated and described are several smaller communities sprung up in the past year or so, all of which bid fair to develop into agricultural grove or lumber centers. One is near the St. Johns river, another is Sanford, one is near the shore of Lake Jessup. Still another is Ocala, a new settlement on the shore of the St. Johns river, and one is near the New Smyrna-Okechobee City branch of the Florida East Coast Railroad.

Chamber of Commerce Boosters on Boat Trip



Members of the Sanford Chamber of Commerce, 125 strong, formed a party which charter a Cyde Line steamer last September, and went to Jacksonville to promote interest in the proposed St. Johns-Inland River canal and to secure the co-operation of Jacksonville citizens in securing this important water route.

Chuluota Combines Fine Commercial Possibilities With Beauty Of Nature

Having retained all that nature endowed the location with and having many of its beauties enhanced by the touch of civilized man, the thriving town of Chuluota is recognized as one of the most beautiful and at the same time most promising commercially in this section of Florida.

Chuluota is located on the Okechobee branch of the Florida East Coast Railway, which runs from New Smyrna on the main line, to Okechobee City, on the northern rim of Lake Okechobee. Its maximum elevation is 63 feet, which gives as the St. Johns River is but six miles to the east of it, excellent drainage naturally. The region about the town site is a rolling country with many clear streams, most of the lakes being head-water tributaries of streams that are deep and swift moving.

This new-old town of natural and man made beauty is located in the southern part of Seminole county 22 miles from Sanford, 22 miles from Orlando, with fine paved roads to Orlando, Sanford, Ocala, Bithlo and soon to the East Coast. Those who selected the site for the town of Chuluota had a rare appreciation of the value and importance of a combination of beauty and healthfulness of a town location. On the crest of a rolling pine forest area dotted with and surrounded by limpid lakes and with a clear drainage fall to the St. Johns River no finer combination of beauty and health guaranteeing could be wished or found, than is enjoyed by this place.

The lowlands along the streams and the great bottom lands of the St. Johns River are of rich muck soil, easily drained and producing immense quantities of farm and garden products when intelligently farmed. The wood lands are high rolling, timbered with the finest of Florida pine and other valuable wood growths. From about 1883 when the first white men settled in Chuluota until the railroad reached there in 1910, the history of the settlement was in many ways similar to that of other isolated localities. However from that time onward it is quite another matter, because as soon as the line reached there the local Land Department of the railroad

formed the Chuluota Company, owning and controlling 10,000 acres of land, surrounding the present town site of Chuluota, which it laid out, beautified, and to some extent, improved by laying the lakes and streets bordered with trees and flowers. A commodious passenger and freight station was built, a large store and other necessary buildings went up at once, and the company built one of the handsomest and most modernly comfortable brick, fire proof hotels that any town in Florida boasts today. This hotel, the Chuluota Inn, has 20 bedrooms, a spacious and well lighted dining room, a restful and home like lobby, wide verandas, plenty of windows and baths, single and en suite, and the entire building is

personally managed and directed by Mrs. Charles D. Brumley, wife of the Florida East Coast Land Company's resident agent. The Inn is maintained as a year round hotel and many a week-end party from Orlando, Sanford, Winter Park, Daytona and other places in the state finds pleasure and entertainment over Sunday at the Chuluota Inn.

A block of general business houses with post office, drug stores and other lines necessary to a town are already established and a number of handsome bungalows, cottages and other homes have been built. Lakes, Fish And Game. One corner of the town rests on Lake Mills and touches Horseshoe Lake also. There is Lake Catherine, nearly in the center of the town, a 12 acre body of water, 27 feet in depth and surrounded by a hard surfaced boulevard set to trees, shrubs and flowers. Around this lake lie the choicest lots for residence buildings and lawns. Spring Lake, about half the size of Lake Catherine, is just over the railroad, set amidst big pines, and one of the most attractive locations for home building. In addition to these larger lakes, there are a number of smaller ones here and there about the town, and scattered over the 10,000 acres of the company are many others both large and small.

Game and Fishing Here. Hundreds of turkeys are all about Chuluota; quail in almost

countless coveys, and all the smaller game such as rabbits, squirrels, ducks and doves abound. The nearby St. Johns River, and every lake, is filled with big mouth black bass, brim, perch and an occasional pike or pickerel. Some stock raising is still done, and there are many orange groves with truly wonderful individual trees that produce fruit unexcelled in quality or quantity.

Some of the old settlers are still there, having persevered in their work, believing that sooner or later there would be roads, and development. Those who remained are now prosperous men, their groves planted soon after they settled, being fine producing properties, now easily accessible by paved highways and railroad to the markets of the world.

Big Things In Store. But in rather another direction probably lies the coming fame of Chuluota, as it is celery growing and winter trucking that is destined to make Chuluota one of the best known centers in Seminole county, already famous for its immense production of these things. It has been proposed by comprehensive "actual experiments" tests that the prairie lands of Chuluota section produce more and fine shipping tomatoes to the acre than can be raised elsewhere in the state.

L. A. Brumley, one of the oldest and largest truck farmers, and celery growers of the Sanford Celery Delta last year bought 10,800 acres of combined prairie and river hammock lands east of Chuluota and began experimenting in a big way. Without any other drainage than the natural fall of the land would afford through surface ditches, Mr. Brumley plowed and planted 200 acres of prairie land, that had never before been plowed, in tomatoes. He raised a \$50,000 crop.

Mr. Brumley also grew without other than surface draining a great acreage in celery on the river hammock lands of which he owns about 7,000 acres. His success, both as to yield per acre, quality and flavor so pleased him that he is preparing this year, by clearing and sub-tile draining and artesian wells for irrigation, 1,000 acres of land in those hammocks for next year's crops and celery and truck vegetables.

Such operations as these are no small ones, nor made by movie es, but they are the foresight and faith of the most "hard boiled" experienced growers of celery and winter vegetables in this state. What L. A. Brumley is doing, is being done on a smaller scale by dozens of others in the section; and in the next five years celery and

(Continued On Page 6)

One Of Sanford's Business Blocks



This is the former home of the First National Bank, which was purchased by the Seminole Securities Company last year. At present the structure is occupied by the Western Union Telegraph office and H. B. Lewis Realty Co., on the first floor with the second floor being devoted to offices.

INSURANCE

BONDS

Established 1908

A. P. Connelly & Sons REALTORS

Our Listings on—

Business Property Apartment House Sites Warehouse Locations

Merit Your Investigation

104-108 Magnolia Avenue

Sanford, Florida

LOANS

INVESTMENTS

1874

1925

Hill Lumber Company

Everything in the Building Line

Yards 3rd and Myrtle and 13th and Holly

FANFORD, FLORIDA.

Phone 135

The House Of



Agents for the following materials, which are leaders in their line.

"GENASCO ROOFINGS"

ACME PLASTER & ACME FINISH

LEHIGH PORTLAND CEMENT

NATIONAL FABRIC FOR STUCCO

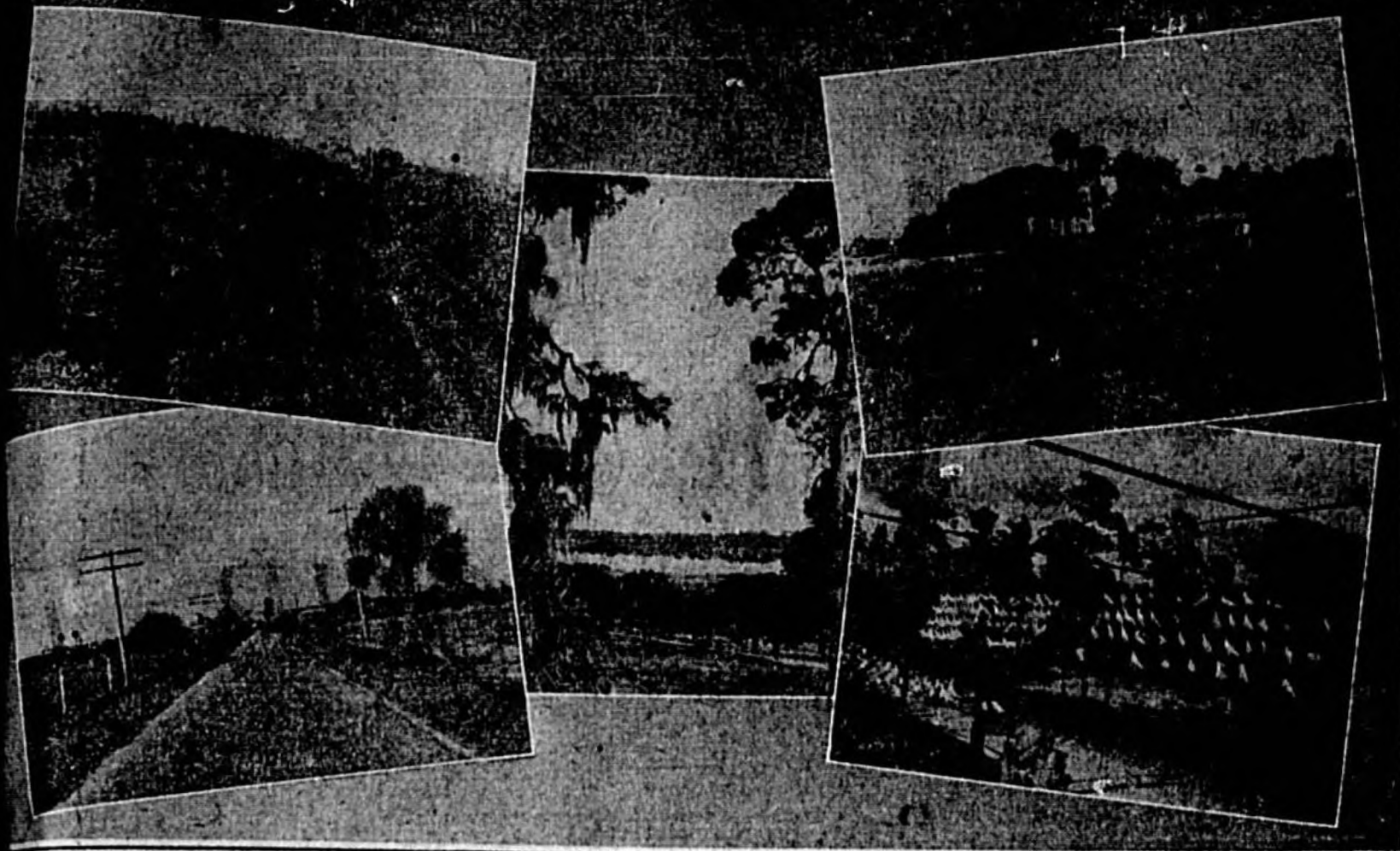
DIXIE "UNCOMMON" BRICK

MERRY BROS. COMMON

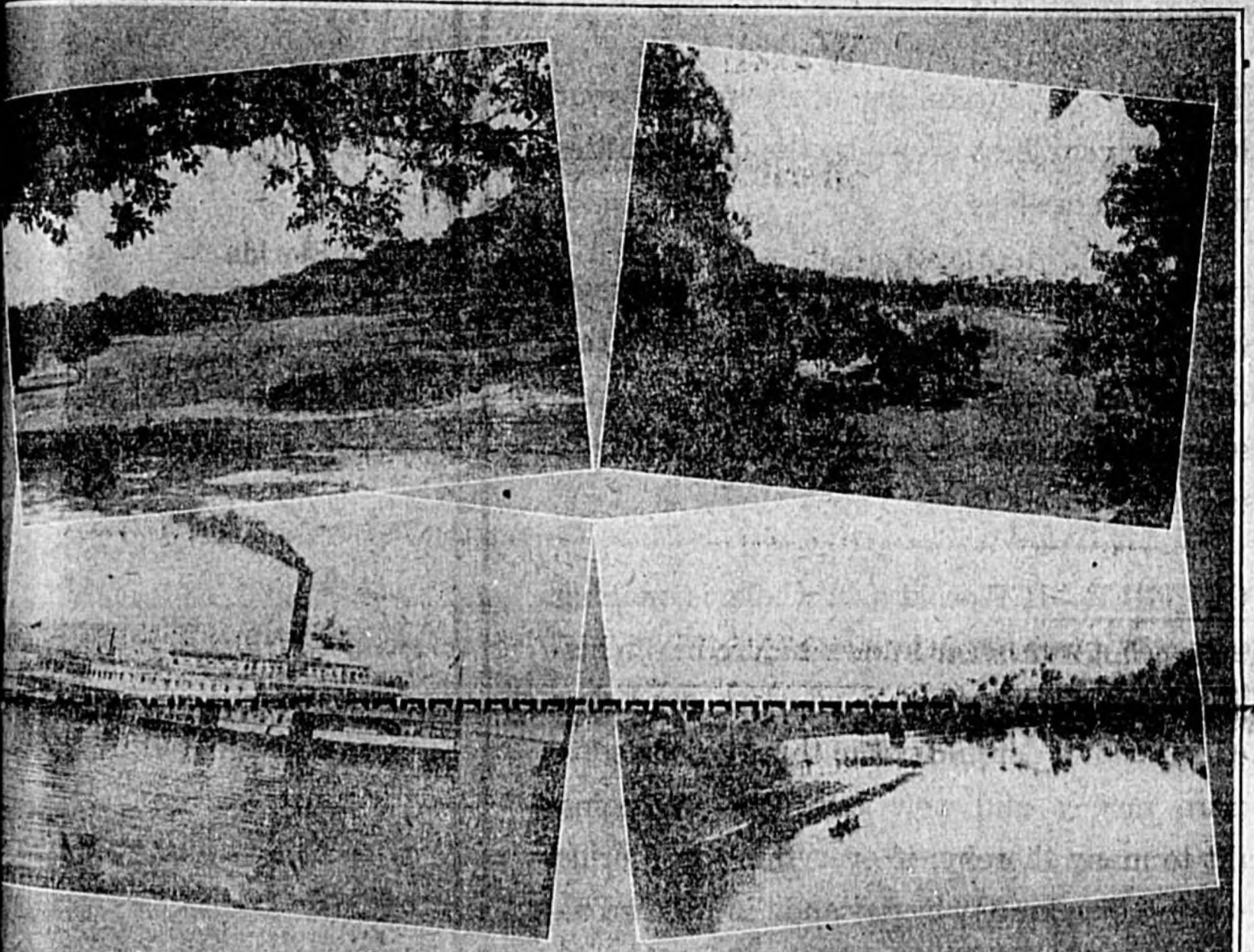
TIGER FINISH LIME.

KEYSTONE ROCK LIME

Prosperous Farms and Groves in Every Section of Seminole County



Reading from left to right: 1—Preparing celery for the market; 2—View of an orange grove; 3—strawberry culture; 4—example of hard surfaced roads; 5—Pigeon farm of F. J. Normyers.



Reading from left to right: 1 and 2—late views showing Sanford's municipal golf course, considered by experts to be one of the best courses in all Florida; 3—Clyde Line Steamer Osceola arriving from Jacksonville with tourists and visitors; 4—View on the St. John's River.

Vegetable Production in Seminole County

per capita is greater than any community served by the... of celery is a science... reports of big profits... to raise celery... disastrous results... with the industry... is no easier way in which... money than to invest in... and annually growing... trucking industry in Seminole County is the result of three... the section's fine rich soil; its water-tempered... winter climate; and its drainage, irrigation and... system.

at once. Farms can be cultivated within four hours after the hardest rains. The controlling bar is made of cement and is 22 inches high, 12 inches wide and six inches thick, with a cement partition in the center. Cement bottoms are made in the intake pipes. And the direct connection with the intake pipe, controlling boxes and feed mains are made water tight. Iron nipples of various sizes are used in making these connections. The holes in controlling boxes are also fitted with iron pipe linings.

Air is also necessary to plant life and this system of irrigation assists in applying air to the very roots of the plants. This subaeration also is of considerable importance as a means of protection in cold weather.

To prepare an acre of land for growing vegetables by installing an irrigation system which costs approximately \$250 may seem a foolish waste of money, but the productivity of an irrigated acre, when properly farmed, is so much greater than it would be otherwise that the owner is fully justified in going to this expense. As an instance an acre has produced 70 tons of vegetables a single growing season of nine months which sold for \$4,064 excluding freight rates of approximately \$1,000 which is admitted an excellent revenue from one acre. In the history of this section, there have been instances of where \$32,000 worth of lettuce and cucumbers were marketed from 22 acres. This particular instance, of course, is the exception rather than the rule. From one to three thousand dollars is not an unusual revenue for a single acre. Small quantities of unimproved irrigable land left in the celery delta sell from \$150 to \$200 and an acre, while the improved land is valued from one to two thousand dollars per acre. It is also not unusual for land that has been in cultivation one season to sell for these prices. Three years cultivation brings it up to its maximum production and such an account of its high rate of cultivation.

Sub-Soil of Clay

There must be a sub-soil of clay or hard-pan at from two to four feet beneath the surface before the system is possible of application. If this subsoil is, for example, three feet below the surface and the system is installed and the water thereon, no matter how high it is to come to the surface until the 13 inches of the earth between the lowest side of the tile and the subsoil has become completely saturated with water. When this is done the moisture is then drawn to the surface by capillary attraction.

An artesian well will cost from \$75 to \$150 and so far as we know, will flow forever. Wells are now in use that have been flowing for the past 40 years, in all there are over 3,000 wells in the Sanford Celery Delta, not all of which are used for irrigation purposes, however. No perceptible decrease in the output of these wells has so far manifested itself.

This gives some idea of the scientific manner in which the growers of Sanford undertake in raising their crops.

From a recent report of the Atlantic Coast Line offices which handled the celery shipments from the section there has been 2523 cars of vegetables handled up to February 1. Of this crop 1,434 was celery, 528 cars of lettuce and 204 cars of escarole, a species of lettuce.

The celery crop this year is much better than in former years and is also bringing a higher price in the northern markets. It is now selling from \$2.50 to \$2.75 a crate.

During the past week in Sanford the shipments of celery have been averaging 100 cars a day. The shipments last year amounted to over 7,000 carloads. Some idea of the magnitude of such a yearly shipment may be gained by placing this number of cars in one long train. The train would be 100 miles long with its entire cargo confined to celery.

The first crop is lettuce which is a gamble crop, due to the fact that favorable prices are dependent upon climatic conditions in the North. If a mild winter prevails in the northern sections, lettuce is still shipped into the consuming markets at the same time the Sanford product is ready for shipment. Lettuce is timed to hit the Thanksgiving market and the season continues until the middle of January. The production per acre for lettuce averages 600 hamper per acre for this section. The variety raised here is what is known as the Big Boston.

A 73 year old bachelor has just got married in an Essex village. After 70, one's power of resistance almost invariably weakens.—Humorist.

As a hotelier's catalogue went to press, "The Wives of Henry the Eighth, Told Thousands," sure to be a some exaggeration here.—Boston Transcript.

Tourist Hotel Will Be Monument To Civic Co-operation

(Continued from Page One)

The permanent preservation of the new lake front boulevard property for fine residence construction provides a residence second to none in the state.

Paving Ordered

The city commission has ordered the immediate asphalt paving of all streets involved in this project, including the Seminole boulevard and First street.

"This company's sale of the property involved, both business and residential, is being handled as a civic project—it is priced at figures representing only its nominal value for the purpose of interesting through ownership, the investors of the entire state. The real profits to be derived from the project, we gladly pass on to those who join us in the building of the city."

Harry T. Bodwell of the Hotel-Realty company, added the following:

"But for the fact of this company's operations constituting a civic movement, several of the properties involved in our present holdings could not have been purchased at even twice the figures at which the company obtained them.

Resale Policy.

"In the resale of this property nothing like the immediately apparent value is reflected in the prices at which it is offered. The policy of the company again is to handle this property with an eye first to the interest of the city. On this account it is offered broadly to the entire state, the purpose being to interest in Sanford through the opportunity offered in this First street property, investors and developers in St. Petersburg, Tampa, Miami, Orlando, Daytona, Jacksonville, and other cities of our state.

"The four blocks comprising the best of Sanford's present business are firmly held at \$1,000 and upward per front foot, and all sales made during the past twelve months have been made at this figure or even higher values. This six blocks of business property comprising the company's holdings are carrying the city's business area to and including the hotel site are priced at from \$150 to \$250 per front foot."

Sanford-Oviedo Truck Growers, Inc.

The oldest co-operative Association in this section handling vegetables; shippers of the famous "Seminole Brand" Celery and Peppers

Sanford, - Florida

SANFORD

BUSINESS PROPERTY

LAKE FRONT PROPERTY

Acreage

BUILDING LOTS

CELERY FARMS

ORANGE GROVES

E. F. Lane, Realtor

"The Man Who Knows Why Sanford Grows"

Sales force:—Miss Ruba Williams, Miss Helen Hooge, Mr. R. L. Shipp

SET ASIDE ONE

DEVOTE THAT HOUR TO

ARE YOU PLAYING FAIR with your future; are you doing your full duty—or your best even—by the opportunities that present themselves.

What will you say to yourself and to others one year, five years, ten years from now in regard to this question? You expect to be alive then don't you? You expect to answer to someone do you not; to yourself if to no other one?

LET US REASON TOGETHER—If Florida as a whole is making progress such a was never known before in the history of this great America; if wonders are being worked in ten or a dozen cities in this glorious state and more money and new comforts are being brought to many thereby; if everything in Florida is increasing in value day by day and the state growing better and better—if these things are true, and we know there is no denying them, how could Sanford with her many wonderful advantages stand still even if she so desired?

PROGRESS IN SANFORD has not yet been capitalized nor further advancement shackled by high prices. Although great strides have been made here that will soon be noted by the world at large, Sanford is today one of the most talked of, carefully watched and least exploited cities in the state, and those facts mean much.

FORT MELLON DEVELOPMENT

“Promoters of Sanford”

A. P. Connelly & Sons

HOUR THIS DAY

TALK WITH YOURSELF

THERE ARE NONE SO BLIND as those who will not see, but to those open to conviction we have much to say that is well worth listening to. The facts are here ready for you and you owe it to yourself to know them. The destiny of this city is now and always will be in the hands of the property owners. Profits from real estate, good homes in pleasant surroundings and all the other worthwhile things in life do not come from hesitation, indecision and waiting, but from meeting opportunities and embracing them.

IT IS NO ORDINARY PROPOSITION that we offer you, not a thing to be treated lightly or put off from day to day. Soon it will come to pass that you will read our announcement that the last lot in Fort Mellon has been sold and if you have not bought one or more lots in that finest of subdivisions you will surely regret it.

DEVOTE ONE HOUR OF SERIOUS THOUGHT of this matter today. Bring the question home to yourself and prepare to face the future. If you owe it to no one else you at least owe it to your own interests. Will you be among the proud owners of property in BEAUTIFUL FORT MELLON or will you have only regrets?

DEVELOPMENT COMPANY

"Best Subdivision"

104 Magnolia Avenue

OVEDO SECOND LARGEST TOWN IN THE COUNTY

Owned By Three Railroads, Ovedo Has Marked Advantage in Marketing Many Kinds of Produce Grown

own Was Founded Sixty Years Ago

100 Acres of Land, Watered By Artesian Supplies, Are Available in the Section

Ovedo, the second largest town in Seminole county and lying 18 miles southeast of Sanford, is one of the most progressive communities in the county. It has a population of more than 1,000, has well paved streets and several brick business blocks.

Conditions in Ovedo today are believed to be better than ever before and its citizens are making it an attractive place in which to reside. Three railroads either in or near the vicinity of all the transportation facilities which are needed for the marketing of its many products.

Started in 1865, Ovedo was first settled in 1865 as far as statements can be made.

Some years before that time, a Swede, had homesteaded all that part of the region where the town lies. He put up a general merchandise store for the convenience of the settlers who were scattered in the region south of Lake Jessup. He also planted some small orange groves later on.

Ovedo became one of the most prosperous men in the section, and a good comfortable estate to his family, of which, two sons, Andrew and Andrew are living in Ovedo.

The town today is one of the most attractive in rural regions of Florida, to the passer through or new comer. The townsite is a group of very noticeable hills of red clay cropping out everywhere giving the appearance of a town in higher altitude than Florida. A well kept business street with modern brick business houses on both sides, with a good looking brick bank building and impressive churches, what good looking and cozy hotel, well kept, modern of good size packing houses and the usual quota of garages, filling stations, the town real-estate man with his appearance of thrift and wealth.

Ovedo has some of the richest soil in this section of the state. In the past, one sees hundreds of acres of intensively cultivated rich muck land on which are raised, potatoes, celery, beans, other vegetables are grown abundantly. Already approximately 2,000 acres are under cultivation, and hundreds of other acres are under process of clearing for future cultivation. Ovedo fields, long after the cessation in the rest of the state supposedly been closed. This season during the entire winter season brought in "top quality" and a little more in many places because of its superior carmine and quality. Ovedo has Ovedo trucking men themselves to be in the past year, that some old Sanford growers of vegetables have bought a large acreage and are now clearing their lands for readiness coming fall and winter. Careful surveys show that some 100 acres of rich hammock land with the rich soil from three to five feet deep located in and near Ovedo. These lands are over an artesian water strata, making it possible to secure flowing water depths ranging from 47 to 200 feet. The hammock lands present the appearance of a tropical jungle.

THE CIRCUIT COURT SEVENTH JUDICIAL CIRCUIT IN AND FOR SEMINOLE COUNTY STATE OF FLORIDA.
J. P. DUNN, Clerk.

DEL LUCILLE SMITH, Complainant
vs.
CURTIS EDWARD SMITH, Defendant.

CITATION.
Curtis Edward Smith, Marco, Florida:
You are hereby ordered to be and appear before our said Court in the above entitled cause, on the 6th day of April, A. D. 1925, at the day of this court, to answer the bill of complaint herein filed in that you, else the same will be taken as confessed and followed by appropriate decree.

It is further ordered that this citation be published in The Sanford Herald, a newspaper published in Sanford, Seminole County, Florida, once each week for four consecutive weeks.

Given under my hand and seal of said Court on this 6th day of March, A. D. 1925.
V. E. DOUGLASS,
Clerk of the Circuit Court,
Seminole County, Florida.
By: A. M. WEEKS, D. C.
n G. LEONARDY,
Deputy Clerk Complainant,
v. 5, 14, 21, 28, Apr. 4.

NOTICE OF APPLICATION FOR A DEED UNDER SECTION 375 OF THE GENERAL STATUTES OF THE STATE OF FLORIDA.
Notice is hereby given that W. Haynes purchaser of Tax Certificate No. 202, dated the 2nd day of July, A. D. 1912, has filed said certificate in my office, and has filed application for tax deed to be in accordance with the law. Said certificate embraces the following described property situated in the county of Florida, to-wit: of 11 Block 2, Cameron, as Recited in Plat Book No. 1, page 59, Seminole County Records. Said land being assessed at size of the issuance of such certificate in the name of Unknown, said certificate shall be returned according to law tax deed thereon on the 21st day of March, A. D. 1925. Witness my official signature and seal this 19th day of February, A. D. 1925.

V. E. DOUGLASS,
Clerk Circuit Court Seminole County Florida.
By: A. M. WEEKS, D. C.
21, 28, Mar. 7, 14, 21, and 28.

Chuluota Combines Beauties Of Nature And Soil Fertility

(Continued From Page 3)

truck grown in Chuluota district will be as plentiful elsewhere and as famous as that grown elsewhere in the noted celery and truck growing county.

It is obvious that additional trains will be required to haul perishables from this section in the near future, and it is not surprising to learn of the plans of the Florida East Coast Railway for taking care of this business. A definite program is under way and when this program is completed, Chuluota will be one of the most important shipping points on the road, and as an important industrial center always becomes a populous center by automatic growth of this beautiful little Seminole county city.

The Florida East Coast Railroad has seen what is coming in this and other sections along its Oklawaha division, and has begun to prepare for the immense traffic.

English Admit America Is Right

LONDON, Mar. 20.—Clubs for women are not a success in London, at least those merely for social intercourse, and several have gone into bankruptcy while others saved themselves by the process of amalgamation.

Something more than social amenities are required to keep a club together, and this is exemplified by the Ladies' Carlton Club, which has an important political atmosphere and is in close touch with the Unionist central office. Another, the Gardens Club, is thriving because of its specially interesting lectures by prominent people in the gardening world, its regular garden dinners and well equipped garden library.

with their interwoven and overlapped branches tied together by innumerable vines and creepers. It costs about \$350 per acre to prepare this land for tilling and getting ready for the plow. The land itself may be bought, now for around \$100 to \$200 per acre.

One of the most prominent residents of Ovedo and one who has been prominently identified with its history for the past few years is B. G. Smith, president of the Ovedo bank. Mr. Smith's bank is one of the strongest banking institutions in the county and has deposits approximately \$200,000. The capital stock is but \$10,000.

Mr. Smith not only is president of the bank but is a large celery grower. He is the owner of several business blocks and residential property. In addition to Mr. Smith Ovedo has many other progressive, live, wide-awake business and professional men, who have aided materially in making the town one of the best in the county. Among some of the business men are J. Lawton, citrus and truck grower, who has long been a resident, H. B. McCall, merchant and grower and A. J. McCulley and sons who operate an up-to-date garage and filling station.

GREAT VALUES IN GROCERIES

Everybody knows this store for its quality merchandise; knows it, too for its moderate prices. Each week we offer our customers our quality goods at our same low prices.

Fresh Vegetables and Fruits
A Competent Delivery Service.

CALL
ROBERTS' GROCERY
Phone 39

116 Magnolia Ave. Phone 442

SANFORD ELECTRIC COMPANY INCORPORATED

A. R. PLATT, Mgr.
Everything Electrical
We Specialize in
Fixtures

VISIT OUR SHOW ROOM



"HIS UNCLE'S NIECE"

By Junior Class
High School Auditorium
TUESDAY, MARCH 24.

A Comedy With a Surprising Climax
DONATED BY
THE FIRST NATIONAL BANK
SANFORD, FLA.



POTTER'S

"ORLANDO Maid" CANDIES

Have a reputation—and by using the best of ingredients, OUR candies have a flavor and taste that appeal to you and make you want MORE.

Especially attention given to party orders. You furnish the color scheme and we will furnish the candy and nuts.

"ALWAYS AT YOUR SERVICE"

TWO STORES
San Jaun Hotel Bldg. and 28 East Pine Street
ORLANDO, FLORIDA

160 Acres at \$60 per Acre

Half mile of water front with excellent fishing and hunting. 60 acres fenced, about 35 under plow. Good soil for celery or fruit. Flowing wells can be had anywhere on it at light cost. Railroad siding for shipping right at corner of place. Subdivided practically up to line. Five years time on part of purchase money if you want it.

If you want to SPECULATE with the ELEMENT OF RISK left out and the ELEMENT OF PROFIT biggest ever, here's the opportunity.

Packard Realty Company

205 Meisch Building, Over Piggly Wiggly.



THE DESSERT OF SANFORD

Princess Ice Cream

Ask for it at the leading fountains.
Special attention given to party orders.
Brick Ice Cream made in all colors.

If you haven't tasted our cream, surprise your family by taking home a quart tonight.

PRINCESS

Ice cream is made from a pasteurized mix of pure milk and cream in our sanitary plant by an experienced ice cream maker.



Seminole Creamery Company

PHONE 634

NEW LUMBER YARD

Now Open For Business

LUMBER—LATH—MOULDINGS
COMMON and FACE BRICK
DOORS and WINDOWS
PLASTER

Window and Door Frames and Screens
Made to Order

BUILDERS HARWARE

Lowest Prices for Cash Only

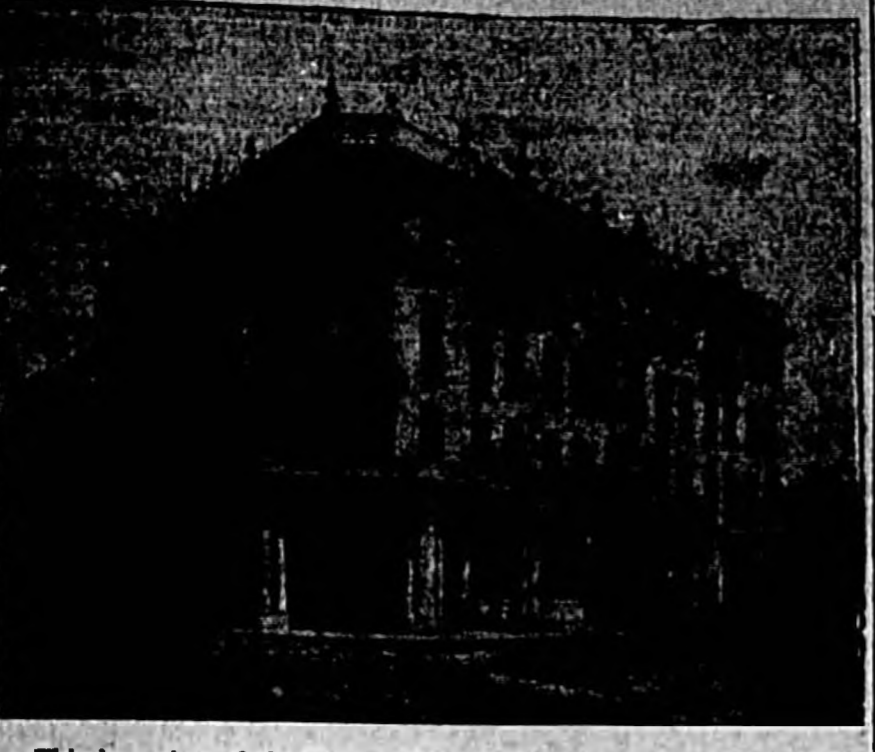
Sanford Cash Lumber Co.

310 FIRST STREET

W. S. PRICE, Mgr.

We can furnish the material or Build your House Complete

One of Sanford's Hotels



This is a view of the Valdez Hotel, a four-story structure which is one of the leading hostleries of the city. It is located at Commercial Street and Park Avenue overlooking Lake Monroe.

IN THE COUNTY JUDGE'S COURT, SEMINOLE COUNTY, FLORIDA.

IN THE ESTATE OF Adolphus F. Bell, deceased.

CITATION To: Mrs. Willie DeWeese, care of James J. DeWeese, Griffith Avenue, Sumner, Kentucky. Mrs. Beale Brown, care of Raymond Brown, Decatur, Alabama. Mrs. Ruth E. McBrice, care of Earl E. Brice, Griffin Avenue, Sumner, Kentucky, and Susan D. Bell, guardian of Joel H. Bell, Sanford, Seminole County, Florida.

Notice is hereby given that I, Susan D. Bell, administratrix of the estate of Adolphus F. Bell have this day, March 31st, 1925, filed in the above Court a petition to take possession of the real property of said estate to pay the debts and charges against said estate, due to the insufficiency of the personal property of said estate, further described as follows, to-wit:

The East half (E 1/2) of the North West Quarter (NW 1/4) of East half (E 1/2) of the North West Quarter (NW 1/4) of Township Three (3) Township Twenty (20) South, Range Thirty-one (31) East, Section 23, Township 19, South of Range 29 East, also; Government Lot One (1) and Two (2) of the East Half (E 1/2) of the Southeast Quarter (SE 1/4) of Section 22, Township 19, South of Range 29 East; also; Government Lot One (1) of Section 22, Township 19, South of Range 29 East; also; Government Lot Two (2) of Section 22, Township 19, South of Range 29 East; also; Government Lot Three (3) of Section 22, Township 19, South of Range 29 East; also; The West Half (W 1/2) of the Southeast Quarter (SE 1/4) of Section 22, Township 19, South of Range 29 East; also; The Northeast Quarter (NE 1/4) of the Southeast Quarter (SE 1/4) of Section 22, Township 19, South of Range 29 East; also; The Southeast Quarter (SE 1/4) of the Southeast Quarter (SE 1/4) of Section 22, Township 19, South of Range 29 East; also; The North Half (N 1/2) of the Southwest Quarter (SW 1/4) of Section 22, Township 19, South of Range 29 East; also; The Southwest Quarter (SW 1/4) of the Southwest Quarter (SW 1/4) of Section 22, Township 19, South of Range 29 East; also; Government Lot Two (2) of Section 24, Township 19, South of Range 29 East; also; and to any and all other persons, whose names are unknown, claiming any right, title or interest in and to the property hereinabove described, or any part or parcel thereof.

It is further ordered that the Order of Publication be published in The Sanford Herald, a newspaper published in Sanford, Seminole County, Florida, once each week for eight consecutive weeks, for eight consecutive weeks.

WITNESS my hand and seal of the County Judge's Court on this the 31st day of March, 1925. JAB. O. SHARON, County Judge.

IN CIRCUIT COURT OF THE SEVENTH JUDICIAL CIRCUIT OF FLORIDA, SEMINOLE COUNTY.

IN CHANCERY. G. F. BELLAMY, Complainant.

Suit to Quiet Title. MARTHA ACRES, et al. Defendants. Notice to Defendants Known and Unknown.

To: Martha Acres, or Martha Acres, Samuel Acres, Martha A. Schroder and her husband, her husband, Colin M. Boone and his wife, Mary V. Russell and her husband, Thomas H. Spinney and Spinney, his wife, Rebecca F. Evans, R. Evans, Robert E. Evans, R. Evans, Trustee, Sarah Ann Roberson, Sarah Ann Roberson, Sarah Ann Roberson, wife of R. H. Roberson, Sarah Ann Roberson, Sarah Ann Roberson, Sarah Ann Roberson, wife of R. H. Evans, and to each and every of them, if living, and if dead, all parties claiming interest in the property involved in this suit, as heirs, devisees, grantees and other claimants under the aforesaid named parties, and each of them, deceased or otherwise, and to any and all persons or parties whose names are unknown, claiming any right, title or interest in and to the property involved in this suit and described as follows, to-wit: Lots 25, 26, 27, 28, 29, 30, 31 and 32 of various subdivisions, according to plat thereof duly recorded in Plat Book 1, page 17, Seminole County, Florida records, said property being situated in Seminole County, Florida.

It is hereby Ordered and Required that you, and each of you, do appear to the bill of complaint filed herein at the Court House in Sanford, Seminole County, State of Florida, on the 4th day of May, A. D. 1925, the same being a rule day of this Court, or else the said cause will be taken as confessed and the matter proceed upon decree pro confesso to be entered.

It is further Ordered that this Order of Publication be published in The Sanford Herald, a newspaper published in Sanford, Florida, in said County, once a week for eight consecutive weeks.

WITNESS my hand and official seal of said Circuit Court at Sanford, Seminole County, Florida, this the 31st day of March, 1925. V. E. DOUGLASS, Clerk of Circuit Court Seventh Judicial Circuit of Florida, Seminole County.

By: A. M. WEEKS, D. C. WILSON & HOUSEHOLDER, Solicitors for Complainant.

Mar. 7, 14, 21, 28, Apr. 4, 11, 18, 25; May 2.

IN THE CIRCUIT COURT OF SEMINOLE COUNTY, FLORIDA.

IN CHANCERY. MATTIE O. PACE, Complainant.

vs. JAMES B. DUNN, if living, and if dead, the heirs, devisees, grantees and other claimants under the said JAMES B. DUNN, deceased, or otherwise, interested in the lands and premises involved in this suit; ALLAN GREELEY, if living, and if dead, the heirs, devisees, grantees and other claimants under the said ALLAN GREELEY, deceased, or otherwise, interested in the lands and premises involved in this suit; and MARGARET W. RAMSEY, an unmarried woman, Defendants.

ORDER FOR PUBLICATION. To: JAMES B. DUNN, if living, and if dead, the heirs, devisees, grantees and other claimants under the said James B. Dunn, deceased, or otherwise, interested in the lands and premises hereinafter described; Allan Greeley, if living, and if dead, the heirs, devisees, grantees and other claimants under the said Allan Greeley, deceased, or otherwise, interested in the lands and premises hereinafter described; and Margaret W. Ramsey, an unmarried woman, Pennsylvania.

You and each of you are hereby required to appear to the bill of complaint in the above entitled cause on Monday, the 4th day in May, 1925, at the court house in the city of Sanford, Seminole County, Florida. Said cause being a suit to quiet title in the certain lot, piece or parcel of land situated in Seminole County, Florida and described as follows: Lot Four (4) Section 22, Township 19 South, Range 29 East.

It is further ordered that this order be published once a week for eight consecutive weeks in the Sanford Herald, a newspaper published in Sanford, Florida, in said County, once a week for eight consecutive weeks.

WITNESS my hand and official seal of said Circuit Court at Sanford, Seminole County, Florida, this the 31st day of March, 1925. V. E. DOUGLASS, Clerk of Circuit Court Seventh Judicial Circuit of Florida, Seminole County.

By: A. M. WEEKS, D. C. ROUSHOLEB, Solicitor for Complainant.

Mar. 7, 14, 21, 28; Apr. 4, 11, 18, 25.

Lane and husband, Lane, Caris A. Lane and husband, Lane, Frank S. Lewis, as Trustee, and his Successors in Trust, and L. Farrell and wife, Farrell, and each and every of the above defendants, if living, and if either, any or all of the above defendants be dead, to all parties claiming interests under each and every of the following deceased defendants, to-wit: J. Cohen and wife, Cohen, Charles C. Warwick, as Trustee and his Successors in Trust, Abbie B. Baldwin, Sturges B. Baldwin and wife, Abbie F. Baldwin, Jesse D. Cole and wife, Cole, William H. Springer, J. B. Magruder and wife, Magruder, Moses J. Taylor Jr. and wife, Annie R. Taylor, David Montgomery and wife, Montgomery, Robert H. Ramsey, as Trustee and his Successors in Trust, Margaret S. Ramsey, individually and as Successor in Trust to Robert H. Ramsey, Margaret W. Ramsey and husband, Ramsey, James W. Johnson and wife, Johnson, Clark W. McDonald and wife, McDonald, Mary A. McDonald and husband, John A. McDonald, C. C. Fuller and wife, Fuller, R. S. Fuller and wife, Fuller, W. H. Stodden and wife, Stodden, R. M. Stodden and wife, Stodden, George E. Brown and wife, Brown, Sigmund Gumpert and wife, Ida Gumpert, S. Gumpert and wife, Gumpert, Lola M. Lane, as Trustee and her Successors in Trust, Sarah Halpin and husband, Halpin, Cora Halpin and husband, Halpin, James Herbert Lane and wife, Lane, Ella May Lane and husband, Lane, Caris A. Lane and husband, Lane, Frank S. Lewis as Trustee and his Successors in Trust, and L. Farrell and wife, Farrell, or otherwise, in and to the lands hereinafter described; to all parties claiming interests under Thomas E. Wilson, deceased, Thomas Emmett Wilson, deceased, James Lane, deceased, and John Early, deceased, or otherwise, in and to the following described lands situated, lying and being in the County of Seminole and State of Florida, more particularly described as follows, to-wit:

Government Lots One (1) and Two (2) of the East Half (E 1/2) of the Southeast Quarter (SE 1/4) of Section 22, Township 19, South of Range 29 East; also; Government Lot One (1) of Section 22, Township 19, South of Range 29 East; also; Government Lot Two (2) of Section 22, Township 19, South of Range 29 East; also; Government Lot Three (3) of Section 22, Township 19, South of Range 29 East; also; The West Half (W 1/2) of the Southeast Quarter (SE 1/4) of Section 22, Township 19, South of Range 29 East; also; The Northeast Quarter (NE 1/4) of the Southeast Quarter (SE 1/4) of Section 22, Township 19, South of Range 29 East; also; The Southeast Quarter (SE 1/4) of the Southeast Quarter (SE 1/4) of Section 22, Township 19, South of Range 29 East; also; The North Half (N 1/2) of the Southwest Quarter (SW 1/4) of Section 22, Township 19, South of Range 29 East; also; The Southwest Quarter (SW 1/4) of the Southwest Quarter (SW 1/4) of Section 22, Township 19, South of Range 29 East; also; Government Lot Two (2) of Section 24, Township 19, South of Range 29 East; also; and to any and all other persons, whose names are unknown, claiming any right, title or interest in and to the property hereinabove described, or any part or parcel thereof.

It is hereby ordered that you and each of you be and appear before our said Circuit Court at the Court House at Sanford, Florida, on the 4th day of April, A. D. 1925, and then and there make answer to the bill of complaint exhibited against you and each of you in this cause.

It is further ordered that this Order of Publication be published in The Sanford Herald, a newspaper published in Sanford, Seminole County, Florida, once each week for eight consecutive weeks, for eight consecutive weeks.

WITNESS my hand and the seal of the Circuit Court of the Seventh Judicial Circuit of the State of Florida, in and for Seminole County, on this the 30th day of January, A. D. 1925. V. E. DOUGLASS, Clerk of the Circuit Court of the Seventh Judicial Circuit of the State of Florida, in and for Seminole County.

By: A. M. WEEKS, D. C. GEORGE A. DECOTTES, and G. W. SPENCER, JR., Solicitor and of Counsel for Plaintiff.

Jan. 31, Feb. 7, 14, 21, 28, March 7, 14, 21, 28.

NOTICE OF APPLICATION FOR TAX DEED UNDER SECTION 23 OF THE GENERAL STATUTES OF THE STATE OF FLORIDA.

CLERK, CIRCUIT COURT OF SEMINOLE COUNTY, FLORIDA. By: A. M. WEEKS, Deputy Clerk.

Solicitor for Complainant, Mar. 7, 14, 21, 28, Apr. 4, 11, 18, 25; May 2.

Notice is hereby given that James L. Dean purchaser of Tax Certificate No. 420, filed and certified in my office, and has made application for tax deed in accordance with law. Said certificate embraces the following described property situated in Seminole County, Florida, to-wit:

SW 1/4 of SW 1/4 of Creek Sec. 22, Twp. 21 S. Range 31 E. - 35

The said land being assessed at the date of the issuance of such certificate in the name of J. J. COHEN, unless said certificate shall be redeemed according to law tax deed issue thereon on the 31st day of March, A. D. 1925.

Witness my official signature and seal this 19th day of February, A. D. 1925. V. E. DOUGLASS, Clerk Circuit Court Seminole County Florida.

By: A. M. WEEKS, D. C. Feb. 21, 28, Mar. 7, 14, 21, and 28.

IN THE CIRCUIT COURT OF THE SEVENTH JUDICIAL CIRCUIT OF FLORIDA, IN AND FOR SEMINOLE COUNTY.

IN CHANCERY. SETH WOODRUFF, Complainant.

vs. J. J. COHEN, et al. Defendants. CITATION.

To: J. J. Cohen and wife, Cohen, Charles C. Warwick, as Trustee and his Successors in Trust, Abbie B. Baldwin, Sturges B. Baldwin and wife, Abbie F. Baldwin, Jesse D. Cole and wife, Cole, William H. Springer and wife, Sarah Springer, J. B. Magruder and wife, Magruder, Moses J. Taylor Jr. and wife, Annie R. Taylor, David Montgomery and wife, Montgomery, Robert H. Ramsey, as Trustee and his Successors in Trust, Margaret S. Ramsey, individually and as Successor in Trust to Robert H. Ramsey, Margaret W. Ramsey and husband, Ramsey, James W. Johnson and wife, Johnson, Clark W. McDonald and wife, McDonald, Mary A. McDonald and husband, John A. McDonald, C. C. Fuller and wife, Fuller, R. S. Fuller and wife, Fuller, W. H. Stodden and wife, Stodden, George E. Brown and wife, Brown, Sigmund Gumpert and wife, Ida Gumpert, S. Gumpert and wife, Gumpert, Lola M. Lane, as Trustee and her Successors in Trust, Sarah Halpin and husband, Halpin, Cora Halpin and husband, Halpin, James Herbert Lane and wife, Lane, Ella May

and wife Lane, Ella May and each and every of the above defendants, if living, and if either, any or all of the above defendants be dead, to all parties claiming interests under each and every of the following deceased defendants, to-wit: J. Cohen and wife, Cohen, Charles C. Warwick, as Trustee and his Successors in Trust, Abbie B. Baldwin, Sturges B. Baldwin and wife, Abbie F. Baldwin, Jesse D. Cole and wife, Cole, William H. Springer, J. B. Magruder and wife, Magruder, Moses J. Taylor Jr. and wife, Annie R. Taylor, David Montgomery and wife, Montgomery, Robert H. Ramsey, as Trustee and his Successors in Trust, Margaret S. Ramsey, individually and as Successor in Trust to Robert H. Ramsey, Margaret W. Ramsey and husband, Ramsey, James W. Johnson and wife, Johnson, Clark W. McDonald and wife, McDonald, Mary A. McDonald and husband, John A. McDonald, C. C. Fuller and wife, Fuller, R. S. Fuller and wife, Fuller, W. H. Stodden and wife, Stodden, George E. Brown and wife, Brown, Sigmund Gumpert and wife, Ida Gumpert, S. Gumpert and wife, Gumpert, Lola M. Lane, as Trustee and her Successors in Trust, Sarah Halpin and husband, Halpin, Cora Halpin and husband, Halpin, James Herbert Lane and wife, Lane, Ella May

It is hereby ordered that you and each of you be and appear before our said Circuit Court at the Court House at Sanford, Florida, on the 4th day of April, A. D. 1925, and then and there make answer to the bill of complaint exhibited against you and each of you in this cause.

It is further ordered that this Order of Publication be published in The Sanford Herald, a newspaper published in Sanford, Seminole County, Florida, once each week for eight consecutive weeks, for eight consecutive weeks.

WITNESS my hand and the seal of the Circuit Court of the Seventh Judicial Circuit of the State of Florida, in and for Seminole County, on this the 30th day of January, A. D. 1925. V. E. DOUGLASS, Clerk of the Circuit Court of the Seventh Judicial Circuit of the State of Florida, in and for Seminole County.

By: A. M. WEEKS, D. C. GEORGE A. DECOTTES, and G. W. SPENCER, JR., Solicitor and of Counsel for Plaintiff.

Jan. 31, Feb. 7, 14, 21, 28, March 7, 14, 21, 28.

Our constantly growing list of well-pleased clients is a source of gratification and pride with us. Below is a carefully selected list of investments, any and all of which we can recommend as good buys at this time.

CENTRAL FLORIDA ACREAGE

- No. 23—22,000 acres in a solid body in Polk county; railroad, highways. \$13.50. No. 37—1,700 acres, 12 miles of Sanford 2 1-2 miles river frontage, \$17.50. No. 49—320 acres Seminole County \$19.00.

SANFORD CITY PROPERTY

- No. 26-S—Corner business lot, 128-117 one-half block from Post Office; two-story brick building, excellent state of repair. \$425 per foot, (this property is in the same block with property that recently sold for \$1,000 per foot.) No. 31-S—114 feet Sanford Avenue \$3,000. No. 32-S—One of the best warehouse sites in the city. Price upon application.

Sanford Realty Company

Room 7, Ball Bldg. Phone 657. SANFORD CITY PROPERTY H. S. LONG, Manager REFERENCES: SEMINOLE COUNTY BANK

Greetings---

TO SANFORD VEGETABLE GROWERS FROM

The Florida Vegetable Corporation

—the Largest Shipper of Sanford Celery

The good quality and pick of our celery is well known to the most critical celery buyers.

Golden Egg Brand, Precooled F. & C. Brand, not Precooled

We will move about April 1st into our new offices in the Masonic Temple.

Office Phone 533 Precooler Phone 408-W

Sanford - Florida



BELL TELEPHONE PROGRESS

THE telephone workers of the Southern Group of Bell Telephone Companies, operating in the States of Alabama, Florida, Georgia, the Carolinas, Kentucky, Louisiana, Mississippi and Tennessee, did a bigger and better job last year than ever before.

Your service is now more extensive, more efficient and more valuable as a result of these efforts. Last year 147,473 telephones were installed and 81,580 removed, making a net gain of 55,893 new stations. This involved gross additions to plant of \$16,854,370. The companies' investment in service as of December 31, 1924, was \$122,749,824.

To manage, operate, maintain and build this extensive plant requires the services of 17,100 men and women, 7,725 in the Southern Bell Company and 9,375 in the Cumberland Company. There is one worker for every 40 telephones.

The total payroll for the year 1924 amounted to \$17,652,884, an average of about \$1,082 per year per employe. Another big item of expense was the tax expense, which amounted to \$8,528,279, or at the rate of \$5.55 per telephone.

The telephone workers appreciate your cordial co-operation and patience, which has encouraged them to work day and night that you might be served.

DAVID LAIRD, Florida Manager. "BELL SYSTEM" SOUTHERN BELL TELEPHONE AND TELEGRAPH COMPANY One Policy, One System, Universal Service