

Howington, Nixon Shut Out Gainesville Twice, 7-0, And 3-0

Seminoles Stretch Lead To Game And One Half Although Islanders Win

Deland Red Hats Play Here Tonight As Daytona Clashes With St. Augustine; Hudson Is Probable Starter

The Seminoles went on the war path with a vengeance last night at Municipal Ball Park when they shut out twirling Jodie Howington and Al Nixon of Gainesville in a doubleheader, 7-0, and 3-0, to gain a half game over Daytona Beach. The Islanders won a single game from Leesburg to fall one and a half games behind.

Nearly 600 fans turned out to support the Seminoles and the "Red Hats" over Daytona Beach. The Islanders won a single game from Leesburg to fall one and a half games behind.

With three more games to be played before the August 15 deadline for the All-Star game, Sanford will play Deland tonight and Daytona tomorrow. Jodie Howington, one of the newly signed players, getting the starting call as Manager Whitey Campbell.

The team leading the league for Thursday's games have completed will be the team representative in the All-Star game. Sanford by taking two of three games from Deland and clinch the title even should they lose their three games with St. Augustine.

It is reported that many fans, besides backing the Seminoles in the past few nights, are planning to flock to Deland for the doubleheader Thursday night which is expected to be "crucial."

Whitey Campbell's charges were inspired, heads-up ball game as they were all down holding every snapped out of the stadium and contributed to the loss of keeping Sanford on top of the heap.

Deland was better than a Seminole. Somewhere on the line he slipped enough to hit second baseman Jackson to hit second in the second inning and in the fourth Petriño got a hit over third on a fly ball which Jackson attempted to catch but the ball skidded from his glove, and Hyder

Conn-Pastor Bout Is Delayed Until 5th Of September

Rate and prospects of a small rate caused postponement of last night's Billy Conn-Bob Pastor fight to Sept. 5 and a shift of the bout from the Polo Grounds indoors to Madison Square Garden.

NEW YORK, Aug. 14 (AP)—Rate and prospects of a small rate caused postponement of last night's Billy Conn-Bob Pastor fight to Sept. 5 and a shift of the bout from the Polo Grounds indoors to Madison Square Garden.

Since last night's winner was slated for a title shot at Heavyweight Champion Joe Louis in September, this change forced promoter Mike Jacobs to begin immediate negotiations for another possible Louis opponent.

The postponement and indoor trek is expected to improve the fight and enhance the rate. It should boost the rate from last night's probable \$40,000 to \$70,000.

Player	Ab	R	H	RBI
Hyder	4	1	3	1
Gillespie	3	1	2	1
Johnson	3	1	2	1
Robertson	3	1	2	1
Kimball	3	1	2	1
Justice	3	1	2	1
Howington	3	1	2	1
Nixon	3	1	2	1
Totals	24	7	17	7

Player	Ab	R	H	RBI
Hyder	4	1	3	1
Gillespie	3	1	2	1
Johnson	3	1	2	1
Robertson	3	1	2	1
Kimball	3	1	2	1
Justice	3	1	2	1
Howington	3	1	2	1
Nixon	3	1	2	1
Totals	24	7	17	7

Anglers Lose To Daytona Beach By Score Of 5-1

"Wild Bill" Colon, Leesburg pitcher, was sailing along in great style against the Daytona Beach Islanders until the eighth inning last night in a State League game.

Up to that time he had allowed but three hits and was heading toward a shutout.

Then the rook caved in and the Islanders smashed his offering for seven hits and five runs in the final two innings, to win, 5 to 1.

Score by innings: R H E
 Beach 000 000 022—5 10 2
 Colon 000 001 000—1 4 1
 Hillbert and Givens Colon and Pierce.

The St. Augustine Islanders played heads-up ball behind Hyder's two-hit pitching to win a 5-0 shutout over Orlando.

The invaders smashed out 13 hits off Kennedy's delivery.

Score by innings: R H E
 St. Aug. 001 100 010—5 13 1
 Orlando 000 000 000—0 3 1
 Hyder and Goff; Kennedy and Onis.

Deland defeated Ocala in the first game of a doubleheader, 5 to 1 with Pugh holding the losers to five hits.

Score by innings: R H E
 Deland 000 000 041—5 13 2
 Ocala 000 000 001—1 5 1
 Pugh and Toode; Eckenroth and Ventura.

McLucas States Grid Practice To Begin August 26

The first football practice of the 1940 season for Seminole High grid candidates will be held Monday, Aug. 26 at 3:00 o'clock at the high school field.

Coach Whitley McLucas announced today. The first game will be with Eastis, Sept. 27, here.

"I won't know what kind of a team I'll have until I work with the boys for awhile," McLucas said, "but I can't expect too much as my entire first string graduated last year. We'll just have to wait and see."

Among the linemen who saw some action last year and who are expected to return are Raymond Kader, a center, Harold Madden, a tackle, and Donald Jones and Tommy Smith, guards.

Dub Epp, quarterback, who did a considerable bit of the ball, better last year, and Joe Davis and John Ansel, halfbacks, are returning backfield men with experience. Fred Dray, who was expected to get the first string call at left halfback, will not be eligible because he played professional baseball with the Seminoles this summer.

McLucas said that he would lose several men he had counted upon if the National Guard is summoned to a year's training.

2nd Half Of Di-Ball Schedule Postponed

Postponement of the second half diamond ball schedule until Sept. 2 was voted by the executive committee of the City Softball Association at their regular meeting Monday night.

The move was made, Miss Eleanor Morrison, chairman of the group, announced, in order that single games can be played three nights a week and also to lend undivided support to the Sanford Seminoles who are in the midst of a tight struggle for first place in the Florida State League.

Not wishing to interfere with

Sanford Juniors Beat Enterprise, 25 To 4

Unscoring a terrific batting attack which was good for 19 hits in a seven inning game, the Sanford playground juniors defeated the Enterprise Juniors, 25-4, on the latter's grounds yesterday afternoon.

The Sanford team scored 14 runs in the sixth and seventh innings to make the game a rout.

F. Griffin with five hits in six times at bat and Drummond with five for seven paced the winning club at bat. No member of Enterprise collected more than one hit as Manning turned in a four hit pitching job.

The line-up: Sanford Juniors: F. Griffin, m.; Raburn and Pennington, c.; Drummond, lf.; Daniels, rf.; Singletary, lb.; Nader, 3b.; Cleveland, cf.; G. Griffin and McMillan, ss.; and Manning, p.

Enterprise: Britt, lf.; Rivers, cf.; Braddock, 3b.; Bruce, c.; Burns, p.

Cleo Jeter Is Placed On Suspended List

Cleo Jeter, right handed pitcher, was placed temporarily on the suspended list, it was announced by the Sanford management.

Jeter was hit in the elbow by a ball in the first inning of the game at Gainesville and a lump the size of an egg immediately formed which handicapped him and prevented him from pitching effectively.

Commercial ice cream production in the U. S. last year was estimated at 290,000,000 gallons.

Ninety per cent of the urban population in the U. S. is connected with public water supply.

Daugherty, Johnson, Belue Join Seminoles

Pitchers Bill Daugherty and John Belue and infielder Woodie Johnson have been added to the roster of the Sanford Seminoles, Frank S. Lamson, club secretary, announced today.

Daugherty, a right hander from Wildwood, was the ace moundman of the Rollins College pitching staff for four years. He spent the early part of this summer with the St. Albans, Vt. semi-pro club.

Belue and Johnson hall from Cedartown, Ga., home of Red Roberts, and have been playing all with the Goodyear team of Cedartown in the Northwest Textile amateur league.

Belue won 6 games and lost 4 for a fourth place team and Johnson was hitting .325.

Additional rookies may be added to the various clubs from now to the end of the season as long as the total number of players on the team does not exceed 12. A rookie is classified as a player who has never signed a professional contract.

THE STANDINGS

Team	W	L	Pct.	G.
Sanford	10	11	.476	21
Daytona	9	12	.429	21
St. Augustine	8	13	.381	21
Deland	7	14	.333	21
Leesburg	6	15	.286	21
Gainesville	5	16	.238	21
Ocala	4	17	.200	21

Team	W	L	Pct.	G.
Cleveland	46	46	.500	92
Chicago	45	47	.489	92
Boston	43	49	.467	92
Philadelphia	42	50	.457	92
St. Louis	41	51	.447	92
Washington	40	52	.435	92
Philadelphia	39	53	.421	92
St. Louis	38	54	.413	92
Washington	37	55	.400	92
Philadelphia	36	56	.391	92
St. Louis	35	57	.383	92
Washington	34	58	.372	92
Philadelphia	33	59	.361	92
St. Louis	32	60	.350	92
Washington	31	61	.339	92
Philadelphia	30	62	.328	92
St. Louis	29	63	.317	92
Washington	28	64	.306	92
Philadelphia	27	65	.295	92
St. Louis	26	66	.284	92
Washington	25	67	.273	92
Philadelphia	24	68	.262	92
St. Louis	23	69	.251	92
Washington	22	70	.240	92
Philadelphia	21	71	.229	92
St. Louis	20	72	.218	92
Washington	19	73	.207	92
Philadelphia	18	74	.196	92
St. Louis	17	75	.185	92
Washington	16	76	.174	92
Philadelphia	15	77	.163	92
St. Louis	14	78	.152	92
Washington	13	79	.141	92
Philadelphia	12	80	.130	92
St. Louis	11	81	.119	92
Washington	10	82	.108	92
Philadelphia	9	83	.097	92
St. Louis	8	84	.086	92
Washington	7	85	.075	92
Philadelphia	6	86	.064	92
St. Louis	5	87	.053	92
Washington	4	88	.042	92
Philadelphia	3	89	.031	92
St. Louis	2	90	.020	92
Washington	1	91	.009	92
Philadelphia	0	92	.000	92

Team	W	L	Pct.	G.
Cincinnati	47	45	.511	92
Brooklyn	46	46	.500	92
Pittsburgh	45	47	.489	92
Chicago	44	48	.478	92
St. Louis	43	49	.467	92
Boston	42	50	.457	92
Philadelphia	41	51	.447	92
St. Louis	40	52	.435	92
Washington	39	53	.421	92
Philadelphia	38	54	.400	92
St. Louis	37	55	.383	92
Washington	36	56	.361	92
Philadelphia	35	57	.340	92
St. Louis	34	58	.319	92
Washington	33	59	.298	92
Philadelphia	32	60	.277	92
St. Louis	31	61	.256	92
Washington	30	62	.235	92
Philadelphia	29	63	.214	92
St. Louis	28	64	.193	92
Washington	27	65	.172	92
Philadelphia	26	66	.151	92
St. Louis	25	67	.130	92
Washington	24	68	.109	92
Philadelphia	23	69	.088	92
St. Louis	22	70	.067	92
Washington	21	71	.046	92
Philadelphia	20	72	.025	92
St. Louis	19	73	.004	92
Washington	18	74	.000	92

"This is the way to feel refreshed"

THE PAUSE THAT REFRESHES

Ice-cold Coca-Cola has a fresh, clean tingling taste that speaks of purity and quality. It leaves you with a delightfully refreshed feeling that is always so welcome... so satisfying. It's a happy ending to thirst.

BOTTLED AND BOTTLED BY THE COCA-COLA CO. BY SANFORD COCA-COLA BOTTLING COMPANY

BAGGETT'S Liquor Store

THE VERY BEST In Liquors, Wines, Gins

Phone 758-1—Avenue Bldg.

BASEBALL 8:15 P. M. TONIGHT

DELAND

—VS—

WHITEY CAMPBELL'S SANFORD SEMINOLES

MUNICIPAL BALL PARK

Classified Advertisements

MISCELLANEOUS

LOANS—Repair, repaint, or rebuild; then pay by the month. No red tape, no down payment. See any mortgage. For information Phone 712, United Lumber Co., 712 French Ave.

BULL SERVICE at your place. Call Sheriff, County 2602.

FARMERS—City Shoe Shop is equipped to repair your boots and saddles. 112 Sanford Ave.

SITUATION WANTED

REFINED WHITE woman with general office or stenographic skill. References. Box 15, Main.

DOROTHY GRAMAM wants to be with or phone 314, Main.

HELENE HAWKINS wants to be with or phone 314, Main.

DANCING ORCHESTRA

At the stroke of 8 every afternoon—play a free concert. Schedule the one you absolutely love.

JACK HOLLOWAY'S MARINE ROOM

Orange at Wall, Orange. No Covers. No Admission.

RED BYDER

... (text partially obscured) ...

RED BYDER

... (text partially obscured) ...

RED BYDER

... (text partially obscured) ...

Sanfordites Register At Florida's Exhibit

Mayor Will With Sign Airport Lease

Repair Your Home

Security Lumber & Supply Yard

Sanfordites Register At Florida's Exhibit

Mayor Will With Sign Airport Lease

Repair Your Home

Security Lumber & Supply Yard

Sanfordites Register At Florida's Exhibit

Mayor Will With Sign Airport Lease

Repair Your Home

Security Lumber & Supply Yard

Sanfordites Register At Florida's Exhibit

Mayor Will With Sign Airport Lease

Repair Your Home

Security Lumber & Supply Yard

Sanfordites Register At Florida's Exhibit

Mayor Will With Sign Airport Lease

Repair Your Home

Security Lumber & Supply Yard

Seminole County Court Records

ALL KINDS OF Machines Repaired Expert Welding

STINE MACHINE & SUPPLY CO.

HILL HARDWARE CO.

MR. COLEMAN SAYS

Social And Personal Activities

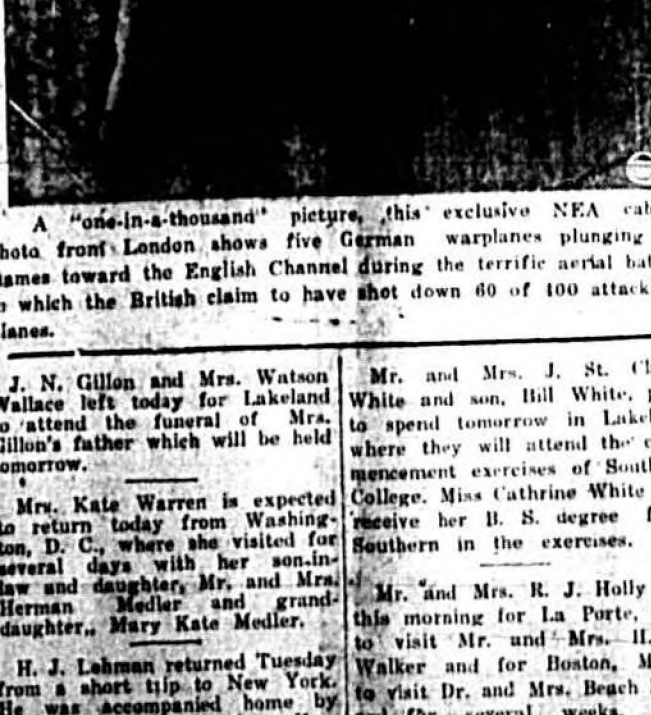
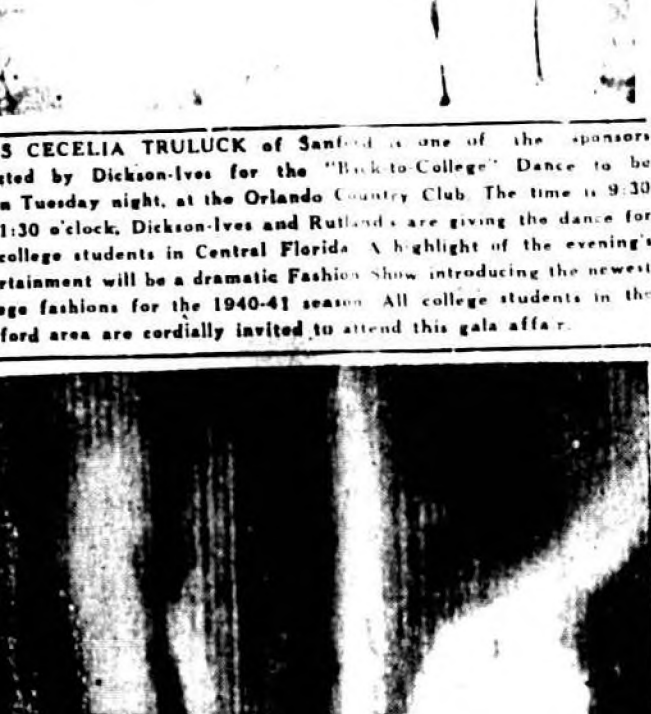
Social Calendar

Methodist Circle 3 Holds Business Meet

Baptist Church Class Holds Monthly Meet

For That Empty Bowl - We Suggest...

ADDED - MARCH OF TIME



Sanfordites Register At Florida's Exhibit

Mayor Will With Sign Airport Lease

Repair Your Home

Security Lumber & Supply Yard

MR. COLEMAN SAYS

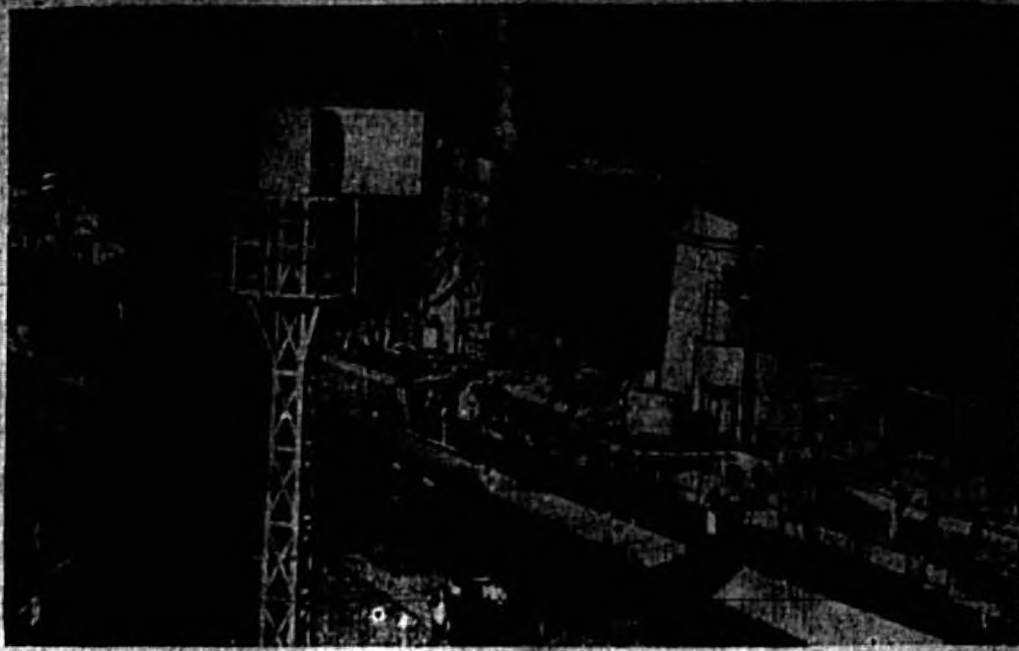
PURCELL'S Great Summer Clearance Brings You AUGUST SAVINGS

EASY F.H.A. TERMS PAINTS & VARNISHES

PURCELL CO. WE CLOTHES THE FAMILY - WE FURNISH THE HOME

Account Of Trip To World's Fair Told By Visitor

...A gulf's said that if person spent 15 seconds on subject in the Smithsonian Institution, it would take 107 years to see them all. New York's World Fair presents a magnificent sight. It seems that first one should visit the huge Tivoli and Perisphere... the entire fair and... the architecture of the fair build... inside the gigantic perisphere a city of tomorrow is... a city minus stone and... ideas in... with civilization. The fair exhibits progress of... in every field. Foreign... are exhibited there for... It is interesting to see the... works of nation's men... literature... of industry are pre... in exhibitions. The For... General Motors exhibits cov... of ground showing pro...



Exclusive Photo
Lacking heavy battleships, the German navy relies largely on swift, streamlined destroyers which Nazi censor terms "poison teeth of German navy." This exclusive photo shows part of fleet at Wilhelmshaven, great German base, seldom photographed in wartime. Heavy cruiser is in background.

Perfect for days popular Tossed salads

KRAFT FRENCH DRESSING

gress of machinery. "The prettiest sight at the Fair was the magic fountain which combined water, fire and starlight symphony presented at the Lagoon of Nations nightly. Pillars of water rise high in the air, flames dart from hidden sources, fire works burst high in coolness goes with the wind as 25 fountains become alive. "In traveling through the northern states the weather and scenery are perfect making such a trip 'Idealistic.'"

BERNE GETS WARNING
BERNE, Switzerland, Aug. 15.—(AP)—Air raid alarm in Berne sounded shortly before last midnight when a squadron of unidentified planes flew over Swiss territory. The Swiss army described the squadron simply as "foreign planes."

Production of hydroelectric power is to be increased in North China.

Republicans To Name Successor To Draper
JACKSONVILLE, Aug. 15.—(AP)—Francis McFale of Jacksonville, Republican candidate for Congress from the second Florida district, said yesterday he had been informed that plans would be drafted within a few days to seek a statewide Republican primary to nominate a successor to Miles H. Draper, Tampa, who announced Monday he had withdrawn as G. O. P. candidate for United States senator. When Draper expressed his intention of retiring from the race to make possible a more vigorous campaign in behalf of Wendell Willkie, National Republican Committeeman J. Leonard Replege said the vacancy would not be filled. This would leave Senator Andrews unopposed for re-election. However, McFale said in a statement here that he felt confident a special primary would be held to name a successor to Draper and "that party leaders could not determine such a question."

At least one Republican, McFale said, had definitely expressed his intention of seeking the place relinquished by Draper and that others contemplated becoming candidates if a primary were held. Should only one candidate qualify, McFale pointed out he would automatically be nominated without the necessity of a formal primary election. McFale said he had appealed to Draper to reconsider his decision, and to allow himself to be drafted as a candidate, thus avoiding the possible expense to the state of Florida of a special primary. Draper in announcing his withdrawal said he expected other nominees of the party in Florida to follow suit. However, no others have withdrawn and four have definitely announced they would not do so.

American machines for making mokers' pipes may be introduced into Australia.

could not determine such a question."

At least one Republican, McFale said, had definitely expressed his intention of seeking the place relinquished by Draper and that others contemplated becoming candidates if a primary were held. Should only one candidate qualify, McFale pointed out he would automatically be nominated without the necessity of a formal primary election. McFale said he had appealed to Draper to reconsider his decision, and to allow himself to be drafted as a candidate, thus avoiding the possible expense to the state of Florida of a special primary. Draper in announcing his withdrawal said he expected other nominees of the party in Florida to follow suit. However, no others have withdrawn and four have definitely announced they would not do so.

American machines for making mokers' pipes may be introduced into Australia.

U. S. NO. 1 Groceries

117 E. FIRST. PHONE 236
FREE DELIVERY

SUGAR 5 lbs. 13c G. F. JUICE 3 cans 12c	POTATOES 10 lbs. 15c	MILK 3 TALL 13c G. F. JUICE 3 cans 12c
5-STRING BROOM Regular 25c Value	FLOUR YOUR CHOICE OF SWANSON'S PILLSBURY SWANSDOWN 5 lbs. 21c	SWIFT'S JEWEL LARD 4 lb. Carton 31c

Cloverbloom Butter Roll or Print 33c
Large Avocados each 7 1/2 c

BEST LINE OF Fruits and Vegetables
TO BE HAD—BE SURE TO SEE OURS FIRST!

NO BOXES OF

5c Stove Matches 4 for 10c	LARGE SOAP OR POWDER 3 for 10c
Corned Beef LIBBY'S OR PREMIUM 17c	Corned Beef Hash 10c
Desert Peaches 12 1/2 c	Desert Peaches 10c

YOUNG & BERRY

Let Us Check Your Car Before You Go On Your Vacation

S. H. ENGLISH GULF SERVICE
CORNER BRENNE & FIRST

IF YOUR TASTE DEMANDS THE BEST IN LIQUORS SCOTCHES and WINES

BE SURE TO VISIT SANFORD'S NEWEST PACKAGE STORE

NICK'S Package Store
410 SANFORD AVENUE
APPROX. CORNER OF SANFORD & A
Department Store

"It's the one unforgivable social sin"

...the one unforgivable social sin... to be seen without a certain amount of... the one unforgivable social sin... to be seen without a certain amount of... the one unforgivable social sin... to be seen without a certain amount of...

FRIDAY ONLY OCEAN SHRIMP lb 10c

Friday Feature
Carrots 5c
Eggs doz. 32c

Hens lb. 15c **Cheese lb 17 1/2 c**

COTTAGE CHEESE
PEANUT BUTTER
FRANKS BOLOGNA 2 lb. 25c

MULLET lb. 5c
BACON lb. 9c
STEAK lb. 35c

Hams lb. 13 1/2 c

POTATOES 10 LB. 16c
AVOCADOS 4 FOR 15c
ONIONS 5 LBS. 14c
PEACHES 3 LBS. 13c
GRAPES LB. 5c

PEAS lb. 5c
LIMES doz. 10c
Rutabagas 2 1/2 c
APPLES 21c
OKRA lb. 5c
CELERY 10c

SERVE "CALICO QUILT" CAKE
GOLD MEDAL FLOUR 5-lb. 19c 10-lb. 37c 20-lb. 73c

Carolene JUICE 5 1/2 c
Tomatoes 4 1/2 c
SUGAR 5 lbs. 22c
JELLO 3 for 10c
LARD 4 lbs. 30c
PEACHES 12 1/2 c
BEANS 7c

SALAD DRESSING Miracle Whip
SOAP, lge. 3 1-3c
Powder, lge 3 1-3c
SOAP 3 bars 10c
KLEX BEADS
FLOUR
MILK 12 oz. 10c
PEAS 2 for 25c
SPINACH 10c
MEAT BALLS 10c
MILK 3 for 10c

Europe Expected To Have Enough Food For Winter

WASHINGTON, Aug. 15 (AP)—If Europe's food supplies are "adequately distributed" during the coming fall and winter, the Agriculture Department forecasts that there will be no abnormal shortages and "certainly no widespread starvation" among the war-torn peoples.

"It raises the question, however, as to whether available supplies could be distributed so as to prevent hunger," the department says.

Communications have been disrupted, distribution disorganized, and people in great numbers have left their homes," said a report issued by the department's foreign service.

"In the larger cities of the recently invaded countries and in other areas where refugees are gathered, food supplies soon may be inadequate. Even where food supplies are for sale, economic dislocation leaves many without the money to buy. The situation is further aggravated by the fact that the armies of occupation will subsidize largely if not wholly on the supplies of the invaded countries."

The report said that continental European supplies of wheat and rye are

Savannah Business Returns To Normal

"Business in Savannah has assumed a normal aspect and is continuing as usual, following the storm," Mayor Thomas G. Bland said yesterday.

The Savannah County Chamber of Commerce. The hurricane was the most intense since 1927, according to the mayor.

"Although considerable damage had been done to trees, glass windows, and roofs, relatively little harm came to the centers of business or homes," the Mayor pointed out.

Leading to Savannah, the city, he added, and hotels are operating without interruption.

Endeavor Leaders Plan Conference At St. Augustine

ST. AUGUSTINE, Fla., Aug. 15.—Christian Endeavor leaders from at least 15 Southern states made plans today to converge on St. Augustine for four days of regional conferences Aug. 19-24.

Christian Endeavor represents 87 different denominations. International and world leaders of Christian Endeavor unions will meet with the southern representatives at the nation's oldest city in a concentrated program of study and organization.

Among states expected to be represented are Georgia, Alabama, Florida, Tennessee, South Carolina, Louisiana, North Carolina, Virginia and Texas.

Conference leaders on the program include H. O. Bowman, of Birmingham, World C. E. vice-president; Carroll M. Wright, executive secretary of the International Society of Christian Endeavor; Boston; Charrie A. Johnston, of Atlanta, regional vice-president of the I. S. C. E.; Dr. C. R. Stauffer, pastor of First Christian Church, Atlanta; Karl Lehman, of Tavares, Fla., former field secretary for Alabama.

SEA GULL FAR INLAND

MACON, Ga., (AP)—A sea gull, blown 120 miles inland by last Sunday's hurricane on the Georgia and South Carolina coasts, fell exhausted near a firehouse here after a 12-hour rest, the sea gull flew away last night.

Peru has decreed that no chinilla furs can leave the country.

CPICKS LOSE MOTHER LOVE

ST. LOUIS, Aug. 15 (AP)—Mother Love, the deepest of emotions, is a fast disappearing factor in the life of an American chicken. According to statistics gathered by the International Poultry Association, more than 65 percent of the American chicken population were incubated.

What's more, the chick association has found, modern incubators do the work of hatching as efficiently and with as good results as the best chick that ever clucked a brood into the world.

Farmer's wives in Malaya are demanding electric refrigerators.

Classified Advertisements

- BUSINESS SERVICE**
- SIGN PAINTING**—H. L. Worthen at W. H. Bate Ser. Sta. Ph. 9130.
- W. J. KING, Plumbing**, Phone 50.
- WASH YOUR WATCH** repaired by one who really knows how. Bricks, Jeweler Magnolia Ave.
- FOR SALE**
- MUST SELL** complete furnishings of 5-room house, including rugs and shades, this week. Apply 404 French Ave., Phone 899, Ralph W. Loring.
- DIAMOND RING**, bargain. Urgent need for cash. Box XX c-o Herald.
- FOR RENT**
- FURNISHED APARTMENT** with electric refrigerator. Phone 330-W.
- BEDROOMS**, connecting bath, close in, convenient. Box C, Herald.
- NICELY FURNISHED** garage apt. 1003 Elm Ave. Apply 814 Elm Ave.
- HELP WANTED**
- MALE BOOKKEEPER** with at least 7 year recent automobile experience. No others need apply. Calvary City Motors.
- SITUATION WANTED**
- WILLIE MAE JACKSON** wants job cleaning house or as nurse. 816 E. 9th St.
- REFINED WHITE** woman wants general office or clerical work. References. Box 15, Herald.
- EILLA BELLE HAWKINS** wants job cleaning house or as nurse. 900 Willow Ave.
- MISCELLANEOUS**
- LOANS**—Repair, repaint, or rebuild; then pay by the month. No red tape, no down payment, nor any mortgage. For information, Phone 713, United Lumber Co., 719 French Ave.
- KEROSENE ELECTROLUX** sales and service. Pyrofax Gas, "Magic Chef," gas Electrolux beyond gas mains. Telephone 2-1411, A. L. Yates, Church & Main, Orlando.
- BULL SERVICE** at your place. Call Shriner, County 2802.
- FARMERS**—City Shoe Shop is equipped to repair your harness and saddles. 210 Sanford Ave.

REDS WEAK ON FRIDAY

National league club's outing the Cincinnati Reds to forget out thinks in the game of the peace-making. McKechnie's report that a good way to beat the Reds is to play them on Friday. Sailing along into August at a .875 clip, the Reds stood only .375 in the Friday game.

Appear to be between 5 and 10 percent below peacetime requirements. This year's crop apparently will be 15 percent below normal. However, fairly large reserves in Germany and Italy, the Department said, would tend to offset the smaller production.

The Department said that in central and northern Europe a crop of 10 to 15 percent of potatoes would supplement local grain supplies. In southeast Europe a better-than-normal crop was indicated. Normal or better crops of vegetables were forecast, but fruit production was described as not bright.

An acute shortage in animal feed supplies was forecast. The Department said such shortages may be 15 percent below requirements. Denmark, the Netherlands and parts of Germany areas which depend heavily on imports, will feel the effects of a shortage in feed concentrates, the report said.

The report estimated that the percentage of fat available for human consumption will be 25 percent short of needs.

BEST GRAIN FURN
LARD 3 lbs. 25¢
BACON lb. 17¢
WHITE BACON lb. 10¢
JEWEL lb. 10¢

GIANT FOOD CENTERS

PIGGY WIGGLY LOVETTS

201 E. First St. QUANTITY RIGHTS RESERVED 327-329 Sanford Ave.
 COURTEOUS YOUNG MEN TO TAKE PURCHASES TO YOUR CAR

BAGGETT'S Liquor Store

THE VERY BEST In Liquors, Wines, Gins

Phone 788-J—Arcade Bldg.

BEEF SALE

ROAST lb. 23¢
ROAST lb. 17¢
STEAKS lb. 35¢
ROAST lb. 29¢
TONGUES 15¢
LIVER lb. 25¢
BREAST lb. 15¢

LIVE WEIGHT - DRESSED FREE
CHICKENS lb. 21¢
HENS lb. 19¢
FRYERS lb. 25¢

1 Day-Friday Only

CHEESE

Regular Size pkg. 4 1/2¢

CHOPS lb. 29¢
CHOPS lb. 19¢
LEGS 6 for 25¢
Hamburger 15¢
MEATS lb. 19¢
BACON lb. 15¢
CHEESE lb. 15¢

MOUNT VERNON PICNICS

At Last They're Here, Folks!

Hurry For Yours!

15 1/2¢

OUR OWN BLEND TEA

JANE PARKER CAKES

1-2 lb. pkg. 19¢
 1-lb. pkg. 37¢

PINEAPPLE 1-lb. 19¢
Angel Food 29¢

PRESERVES 1-lb. jar 15¢
2-lb. jar 27¢

DRESSING pint jar 15¢
quarts 25¢

SPAGHETTI 25¢
MARMALADE 27¢

FRENCH DRESSING 10¢
SPARKLE 3 pkgs. 10¢

CHUCK ROAST lb. 23¢
T-Bone STEAK lb. 40¢
Sunnyfield HAMS lb. 25¢
PORK CHOPS lb. 20¢
SPARERIBS 2 lb. 25¢
BOSTON BUTTS lb. 35¢
Bacon SQUARES lb. 17¢

POTATOES 10 lbs. 15¢
BANANAS 4 lbs. 15¢
CARROTS 2 bunches 15¢
GRAPES 3 lb. bskt. 20¢
ICEBERG LETTUCE 8¢
Ripe TOMATOES lb. 5¢
ONIONS 3 lbs. 10¢

HONEY pt. jar 17¢
BEANS 2 1-lb 6 oz cans 13¢

FLOUR 5 lbs. 15¢ 12 lbs. 33¢ 24 lbs. 63¢ 48 lb. \$1.23

Wafers 2 1/2 lb. pkgs. 15¢
Dried Apples Bulk lb. 10¢
PRUNES 70-80's lb. 5¢
Window Cleaner 6 oz. btl. 10¢
Soap Powder 3 lge. pkgs. 12¢
Soap Flakes 1ge. pkg. 19¢
Klex 3 small 23¢ lge. pkg. 15¢

POTATOES 10 lbs. 15¢

Avocados 9¢
CELERY 10¢
CARROTS 6 1/2¢
ONIONS 10¢
Tomatoes lb. 5¢
LEMONS 10¢

GIVEAWAY SALE

10 ITEMS FREE!

We're giving away merchandise folks, the most remarkable sale ever conceived.

1 can Am. Oil Sardines with 4 cans for 15¢
1 pkg Jell-O with 4 boxes for 10¢
1 Box 5c Matches with 4 boxes for 10¢
1 Roll Tissue with 3 rolls for 10¢
1 Can Dog Food with 3 cans for 15¢
1 Box 5c-Black Pepper with 3 cans for 10¢
1 pkg. Full Wrapped Prunes with 2 pkgs. for 15¢
1 Can Cool Aid with 3 cans for 15¢
1 Dozen Clothes Pins with 3 dozen for 14¢

Libby's FAMOUS CORNED BEEF

no. 1 can 17¢

Dried BEEF 10¢
Beef HASH 29¢
Sausage 15¢
MEAT 10¢
HAM 10¢

FLOUR
20 lbs. 49¢
20 lbs. 59¢

BUTTER

IN CARTONS - IN QUARTERS

31¢

Daisy CHEESE lb. 23¢

BREAD 8¢
Tea ROLLS 5¢
PARKAY lb. 15¢
JELLIES 12 1/2¢
SYRUP 17¢

SHAMPOO 19¢
KIRK'S 15¢
CLOROX 19¢

PG P-G SOAP 15¢
LIFEBUOY 4 1/2¢

Stokely's PANTRY SALE

PEACHES no 2 1/2 can 15¢
Stokely's Fruit Cocktail no 1 11¢
Stokely's Cut Beets 3 no 2 25¢
Stokely's Cut Green Beans no 2 10¢
Stokely's Tiny Green Lima's 2 no 3 27¢

Stokely's Whole Green Beans no 2 15¢
Stokely's Tomato Catsup 14oz 12¢
Stokely's Pickles 12 oz 15¢
Stokely's Unpeeled Apricots 2 no 1 25¢

Crackers 2 pkgs. 19¢
No. 33 Bleach qt. 10¢
1-LB. CAN 15¢ SNOWDRIFT 45¢
Yellow Coffee lb. 12 1/2¢
Tiprary Tea 27¢
Mayonnaise jar 23¢

BREAD 8¢
Tea ROLLS 5¢
PARKAY lb. 15¢
JELLIES 12 1/2¢
SYRUP 17¢

SHAMPOO 19¢
KIRK'S 15¢
CLOROX 19¢

PG P-G SOAP 15¢
LIFEBUOY 4 1/2¢

Stokely's PANTRY SALE

PEACHES no 2 1/2 can 15¢

Stokely's Whole Green Beans no 2 15¢
Stokely's Tomato Catsup 14oz 12¢
Stokely's Pickles 12 oz 15¢
Stokely's Unpeeled Apricots 2 no 1 25¢

TABLE SUPPLY EVERY DAY PRICES

MASSIVE FRUIT AND VEGETABLE DISPLAYS! 5¢ QUALITY MEATS! 8¢

9¢ FOOD SAVINGS! 6¢

ARE THE TALK OF THE TOWN!

AND YOU GET THESE SENSATIONAL WEEK-END BARGAINS, TOO!

Meat Bargains In Table Supply Markets!

ASSORTED CUT PORK CHOPS . . lb. 23¢

WESTERN BRANDED STEAKS Loin Club 22¢

WESTERN BRANDED ROAST Chuck lb. 18¢

AST. OLD OUTS . . } lb. 19¢

SKINLESS FRANKS . . . }

SPARE RIBS . . . } lb. 10¢

SALT BACON . . . }

PORK LIVER . . . }

OLEO O'Malley Lb. 10¢ High Parky Lb. 15¢

LAMB Leg lb. 25¢

Shoulder lb. 17¢

Loin Chops, B. 39¢ Rib Chops, B. 29¢

STEW MEAT 2 LBS. 25¢

GROUND STEAK LB. 18¢

FULL CREAM LONGHORN CHEESE LB. 23¢

RED SAUSAGE LB. 10¢

AMSBELL'S PICNIC

HAMS 8 to 10-lb. Average Lb. 15½¢

PRICE ONLY SLAB BACON LB. 15¢

KRAFT CHEESE 2 Lb. 45¢

AMSBELL'S SLICED Bacon lb. 19¢

Del Monte's Tiny Gem No. 1 LIMA BEANS 10¢

Montebean's PIE CHERRIES 10¢

PUYAN BEAN POT BEANS 25¢

DO DO . . . (Q. 23¢)

MORTON SALT BOX 8¢

ARGO STARCH 3 10¢

BAKER'S or HERSEY'S COCOA 1 LB. 15¢

SHREDDED WHEAT PKG. 9¢

FROM THE COUNTRY HILL GOLDEN GRAIN

BUTTER lb. 27

CLAPP'S CHOPPED CAN 15¢

DEL MONTE BABY FOOD STRAINED 2 15¢

FRUIT COCKTAIL 2 25¢

ARGO FRESH PURPLE PRUNES 2 No. 2 1/2 Can 25¢

ARGO LUSCIOUS HALVES PEACHES 2 No. 2 1/2 Can 29¢

POST'S BRAN FLAKES PKG. 8½¢

QUAKER MOTHER'S OATS PKG. 8½¢

ARGO JUMBO SLICED PINEAPPLE 1 1/2 CAN 15¢

KRAFT MAYONNAISE . . . QT. 39¢

DEL MONTE PINEAPPLE JUICE 3 12-oz. Can 25¢

HYPRO PT. 10¢ QT. 17¢

QUAKER CORN MEAL PKG. 7½¢

QUAKER OATS PKG. 7½¢

STRINGLESS BABY FRESH WHITE

BEANS or LIMA BEANS No. 2 5¢ Can 5¢

ARGO COUNTRY BUTTERMAN OR GOLDEN BANTAN

CORN 2 MED. CANS 19¢

FLOUR 5 LBS. 21¢ 10 LBS. 38¢ 20 LBS. 70¢

ECONOMY SODA OR GRAHAM CRACKERS LB. PKG. 10¢

DEL MONTE FRESH PRUNES No. 2 1/2 Can 17¢

MEAL 4 LBS. 10¢

RICE 4 LBS. 18¢

JELLO ALL FLAVORS PKG. 8¢

FLY RIDER Lightest Diet of Mosquitoes PT. 10¢ RT 32¢

HITS THE SPOT HOT OR COLD SPAN CAN 23¢

"35" BLEACH QT. 10¢

PIMENTOS 4-OZ. CAN 8¢

DEWHEAT ASSORTED PICKLES 22-OZ. JAR 12½¢

AMMONIA QT. BOTTLE 15¢

LIGHTHOUSE CLEANSER 2 10¢

DOG FOOD 10 1-LB. CANS 39¢

MILK Borden's Silver Cow Tall 5 1/2¢

JEWEL Swift's Finest Compound Carton 4 lb. 30¢

CAMAY BAR 5½¢

OXYDOL SM. 8¢ GIANT 33¢ LB. PKG. 15½¢

P&G SOAP 3 10¢

IVORY SOAP MEDIUM 5½¢ LB. 25¢

IVORY FLAKES SM. 8¢ LB. PKG. 20¢

CRISCO 1 LB. 18¢ 3 LBS. 47¢

IDEAL DOG FOOD 3 15¢

WALDORF TISSUE 2 25¢

SCOT TISSUE 2 FOR 15¢

MIL'NUT TALL CAN 5½¢

KAFFEE HAG OR SANKA LB. 29¢

OUTRITE WAX PAPER SM. 5¢

CHASE & SANBORN COFFEE LB. 21¢

HONEY Florida Fine Flavored 5 LB. CAN 39¢

PEAS Regular 12½¢ Value ARGO TENDER SUGAR PEAS MED. CAN 10¢

LAND O' SUNSHINE EXTRA STANDARD TOMATOES 2 NO. 2 CANS 15¢

SALT KLEER 4 1 1/2-LB. BOXES 10¢

VAN CAMP'S PORK AND BEANS 11¢ 14¢ 2 1/2 Can 15¢

VAN CAMP'S SPAGHETTI 2 15¢ TALL 9½¢

DREFT Large 21¢ Small 10¢

COOKING OIL 1-GAL. CAN 75¢

MACARONI or SPAGHETTI 2 1-LB. PKGS. 15¢

FELLSMITH PARCHMENT FLAKES PKG. 10¢



Table Supply Bread

WHITE LOAF 8¢

FULLMAN 10¢

Buy from Table Supply's massive displays of fresh fruits and vegetables

GRAPE 15¢

By Mark's Choice 2 Lb. 20¢

HALABAS 2 Lb. 20¢

POTATOES 10 LB. 15¢

BARTLETT PEARS 3 FOR 25¢

ONIONS U.S. No. 1 Yellow 3 10¢

CHERRY 10¢

EGG PLANT 3 10¢

YOUR FAVORITE EXTRA LARGE PANTS

Economy Salad Dressing QT. 19¢

COFFEE 2 1-LB. CANS 21¢

COFFEE 2 1-LB. CANS 21¢

House Passes Guard Bill By Big Majority

Vote 342-33 To Mobilize Guardsmen For Year Of Active Army Service Gives Roosevelt Greater Power

WASHINGTON, Aug. 16 (AP)—The House yesterday, by a vote of 312 to 33, passed legislation empowering President Roosevelt to mobilize 360,000 National Guardsmen and army reservists for a year of active military service anywhere in this hemisphere.

The bill—an initial step toward quickly increasing the size of the nation's standing army to 500,000—went back to the Senate for conference on House amendments.

War Department officials planned to call up 220,000 guardsmen before Jan. 1, adding these to the present army establishment of 250,000. Brig. Gen. William B. Shedd, assistant Army Chief of Staff, said Tuesday the Army intended to start mobilizing guardsmen Sept. 15, calling up 55,000 others would be summoned Oct. 15, Nov. 15 and Dec. 1.

War Department officials planned to call up 220,000 guardsmen before Jan. 1, adding these to the present army establishment of 250,000. Brig. Gen. William B. Shedd, assistant Army Chief of Staff, said Tuesday the Army intended to start mobilizing guardsmen Sept. 15, calling up 55,000 others would be summoned Oct. 15, Nov. 15 and Dec. 1.

War Department officials planned to call up 220,000 guardsmen before Jan. 1, adding these to the present army establishment of 250,000. Brig. Gen. William B. Shedd, assistant Army Chief of Staff, said Tuesday the Army intended to start mobilizing guardsmen Sept. 15, calling up 55,000 others would be summoned Oct. 15, Nov. 15 and Dec. 1.

War Department officials planned to call up 220,000 guardsmen before Jan. 1, adding these to the present army establishment of 250,000. Brig. Gen. William B. Shedd, assistant Army Chief of Staff, said Tuesday the Army intended to start mobilizing guardsmen Sept. 15, calling up 55,000 others would be summoned Oct. 15, Nov. 15 and Dec. 1.

War Department officials planned to call up 220,000 guardsmen before Jan. 1, adding these to the present army establishment of 250,000. Brig. Gen. William B. Shedd, assistant Army Chief of Staff, said Tuesday the Army intended to start mobilizing guardsmen Sept. 15, calling up 55,000 others would be summoned Oct. 15, Nov. 15 and Dec. 1.

War Department officials planned to call up 220,000 guardsmen before Jan. 1, adding these to the present army establishment of 250,000. Brig. Gen. William B. Shedd, assistant Army Chief of Staff, said Tuesday the Army intended to start mobilizing guardsmen Sept. 15, calling up 55,000 others would be summoned Oct. 15, Nov. 15 and Dec. 1.

War Department officials planned to call up 220,000 guardsmen before Jan. 1, adding these to the present army establishment of 250,000. Brig. Gen. William B. Shedd, assistant Army Chief of Staff, said Tuesday the Army intended to start mobilizing guardsmen Sept. 15, calling up 55,000 others would be summoned Oct. 15, Nov. 15 and Dec. 1.

Seeks Shelter



Accepting the invitation of President Roosevelt, Crown Princess Martha of Norway and her three children are en route to the United States. They are traveling on a U. S. ship, presumably the troop transport the American Legion, which recently left Stockholm to pick up American refugees at Petsamo, Finland.

Two Injured As Plank Falls Off Paint Scaffold

Two workmen, G. K. Houghton, about 35, and Lawton Sessions, about 60, were injured today at noon when a heavy plank fell off a two-story scaffold as they were trying to move it. The plank crashed down as the men were standing under the scaffolding on the sidewalk and struck Mr. Houghton on the head and Mr. Sessions on the back.

A doctor called to the scene of the accident later made X-ray pictures of the men, but declined to say how seriously their injuries were until the pictures were developed.

The men were painting the building at Magnolia Avenue and Second Street, which is soon to be occupied by the Thorpe Furniture Company, according to E. M. Smith, local manager.

No Primary Expected For G. O. P. Ticket

JACKSONVILLE, Aug. 16 (AP)—Republicans said here today there would be no special party primary because GOP candidates who may withdraw from various races weren't likely to resign until after 45 days before the November general election.

Draper said in an announcement earlier this week he was withdrawing from the United States Senate race to facilitate a united campaign for the presidential candidacy of Wendell Willkie. He said he expected to be a member of the Republican National Convention, and that he would not be a candidate for any office in the November election.

Draper said in an announcement earlier this week he was withdrawing from the United States Senate race to facilitate a united campaign for the presidential candidacy of Wendell Willkie. He said he expected to be a member of the Republican National Convention, and that he would not be a candidate for any office in the November election.

Bradshaw Says All-Star Game Will Be Here

Coleman And Higgins Represent Fans In Request To Have Sanford Get Tilt

"If the people of Sanford want the All-Star game, they ought to get it," Charles S. Bradshaw, president of the Sanford Seminoles, said today in answer to a letter by Mayor Walter S. Coleman and Edward Higgins, secretary of the Seminole County Chamber of Commerce, requesting and insisting that the game be played here.

"The Sanford fans have been very loyal, especially during the past two weeks when the team has been playing under pressure and needed all the moral support they could get," said Mr. Bradshaw.

"I hate to disappoint Orlando, but as long as Sanford fans express a desire for the game, they will get it," the Seminoles' president said. "I was delighted to see such a large following over at Deland. When the boys have the enthusiastic support of the fans, they play better ball."

Orlando, hearing rumors that Sanford did not want the game this year, said it desired to have the game played there. Because of the larger seating space at Tinker Field, officials of the Florida State League were said to have approved the change.

Mr. Coleman and Mr. Higgins praised Bradshaw in their letter saying, "We appreciate what you have done for the City of Sanford, both from a recreational standpoint as well as from the standpoint of the invaluable publicity obtained for the City by your teams, and want to publicly extend to you our thanks for the splendid work you have done."

The letter follows: Dear Mr. Bradshaw: During the past few days rumors have been brought to our attention that to ease the Sanford team were leading the Seminoles to buy over-age American destroyers.

To every question Mr. Roosevelt said newsmen should refrain from any speculation and stick to news facts.

Postal receipts for the quarter ending Sept. 30 are already \$200 ahead of the same quarter in 1939. O. M. Harrison, assistant postmaster, announced today that the total for the months of July, August and September was \$1,847,722, while the total from July 1 to Aug. 15 is \$5,105,622.

Encouraged by the jump in receipts, Mr. Harrison remarked that the Post Office is "generally in the red during this time of the year."

2500 Nazi Planes Strike At London's Powder Factories; U. S. Considers British Bases

President Announces Talk With England About Strategic Spots Near Panama

WASHINGTON, Aug. 16 (AP)—President Roosevelt announced today that the United States is "holding conversations" with Great Britain on the acquisition of naval and air bases by the United States "with special reference to the Panama Canal."

The Chief Executive made the announcement at his press conference but cautioned reporters repeatedly not to tie it up with any speculation about the release of American destroyers to Great Britain.

Voluntarily, Mr. Roosevelt authorized the following direct-quotations on negotiations for bases: "The United States government is holding conversations with the government of the British empire with regard to the acquisition of naval and air bases by the United States with special reference to the Panama Canal."

The President then said that he had another item of news on which he also would make a direct, quotable statement, which was: "The United States government is carrying on conversations with the Canadian government looking toward the defense of the American Hemisphere."

Reporters asked question after question designed to bring out whether there was any connection between naval and air base negotiations and Great Britain's offer to buy over-age American destroyers.

To every question Mr. Roosevelt said newsmen should refrain from any speculation and stick to news facts.

Postal receipts for the quarter ending Sept. 30 are already \$200 ahead of the same quarter in 1939. O. M. Harrison, assistant postmaster, announced today that the total for the months of July, August and September was \$1,847,722, while the total from July 1 to Aug. 15 is \$5,105,622.

Encouraged by the jump in receipts, Mr. Harrison remarked that the Post Office is "generally in the red during this time of the year."

Postal receipts for the quarter ending Sept. 30 are already \$200 ahead of the same quarter in 1939. O. M. Harrison, assistant postmaster, announced today that the total for the months of July, August and September was \$1,847,722, while the total from July 1 to Aug. 15 is \$5,105,622.



At least 1,000 German airplanes stormed England yesterday and bombed the great London airport at Croydon. Battles were also fought over the Tilbury docks, according to Berlin reports. Shown above is Croydon, target of Nazi bombs.

Postal Receipts Reveal Increase Over '39 Period

Postal receipts for the quarter ending Sept. 30 are already \$200 ahead of the same quarter in 1939. O. M. Harrison, assistant postmaster, announced today that the total for the months of July, August and September was \$1,847,722, while the total from July 1 to Aug. 15 is \$5,105,622.

Encouraged by the jump in receipts, Mr. Harrison remarked that the Post Office is "generally in the red during this time of the year."

Postal receipts for the quarter ending Sept. 30 are already \$200 ahead of the same quarter in 1939. O. M. Harrison, assistant postmaster, announced today that the total for the months of July, August and September was \$1,847,722, while the total from July 1 to Aug. 15 is \$5,105,622.

Encouraged by the jump in receipts, Mr. Harrison remarked that the Post Office is "generally in the red during this time of the year."

Postal receipts for the quarter ending Sept. 30 are already \$200 ahead of the same quarter in 1939. O. M. Harrison, assistant postmaster, announced today that the total for the months of July, August and September was \$1,847,722, while the total from July 1 to Aug. 15 is \$5,105,622.

Postal receipts for the quarter ending Sept. 30 are already \$200 ahead of the same quarter in 1939. O. M. Harrison, assistant postmaster, announced today that the total for the months of July, August and September was \$1,847,722, while the total from July 1 to Aug. 15 is \$5,105,622.

Townsendites And Progressives Hear John Weir Speak

John R. Weir, chairman of the recent Townsend National Convention in St. Louis, told a joint meeting of local Townsendites and the Progressive Club last night the economic benefits which will come from the plan to increase the minimum wage.

Encouraged by the jump in receipts, Mr. Harrison remarked that the Post Office is "generally in the red during this time of the year."

Postal receipts for the quarter ending Sept. 30 are already \$200 ahead of the same quarter in 1939. O. M. Harrison, assistant postmaster, announced today that the total for the months of July, August and September was \$1,847,722, while the total from July 1 to Aug. 15 is \$5,105,622.

Encouraged by the jump in receipts, Mr. Harrison remarked that the Post Office is "generally in the red during this time of the year."

Postal receipts for the quarter ending Sept. 30 are already \$200 ahead of the same quarter in 1939. O. M. Harrison, assistant postmaster, announced today that the total for the months of July, August and September was \$1,847,722, while the total from July 1 to Aug. 15 is \$5,105,622.

Postal receipts for the quarter ending Sept. 30 are already \$200 ahead of the same quarter in 1939. O. M. Harrison, assistant postmaster, announced today that the total for the months of July, August and September was \$1,847,722, while the total from July 1 to Aug. 15 is \$5,105,622.

Shaffer Is High With 92 Score In Gun Club Shoot

Posting a score of 92, Charles Shaffer led a field of approximately 100 postal marksmen in the weekly shoot of the Seminole Gun Club yesterday afternoon at the rifle range on Lakewood Boulevard. The high scores were turned in by H. B. McCall, 91; A. J. DeWitt, 90; R. L. Dean, 89; Maurice Henshaw, 88; Jack Floyd and O. H. Platt, 87; A. H. Haines, 86; and J. S. Webb, 85.

Encouraged by the jump in receipts, Mr. Harrison remarked that the Post Office is "generally in the red during this time of the year."

Postal receipts for the quarter ending Sept. 30 are already \$200 ahead of the same quarter in 1939. O. M. Harrison, assistant postmaster, announced today that the total for the months of July, August and September was \$1,847,722, while the total from July 1 to Aug. 15 is \$5,105,622.

Encouraged by the jump in receipts, Mr. Harrison remarked that the Post Office is "generally in the red during this time of the year."

Postal receipts for the quarter ending Sept. 30 are already \$200 ahead of the same quarter in 1939. O. M. Harrison, assistant postmaster, announced today that the total for the months of July, August and September was \$1,847,722, while the total from July 1 to Aug. 15 is \$5,105,622.

Postal receipts for the quarter ending Sept. 30 are already \$200 ahead of the same quarter in 1939. O. M. Harrison, assistant postmaster, announced today that the total for the months of July, August and September was \$1,847,722, while the total from July 1 to Aug. 15 is \$5,105,622.

Berlin Says Big Explosions Seen In Outlying Suburbs Of British Capital

A terrific battle over London was being fought this afternoon, authorized Nazis in Berlin said, with German planes raining bombs on London's outlying suburbs and clashing with British pursuit ships.

While cable communication with London remained unimpaired, reports from Berlin said huge explosions from Nazi bombs were observed at Purfleet andarking in the British capital's densely-populated East End.

The gunpowder factories are located at Purfleet. The Barking-Purfleet section is just a short distance north of the Royal Woolwich arsenal in the vicinity is clustered London's most important docks and nearby is the huge Imperial gas works.

Encouraged by the jump in receipts, Mr. Harrison remarked that the Post Office is "generally in the red during this time of the year."

Postal receipts for the quarter ending Sept. 30 are already \$200 ahead of the same quarter in 1939. O. M. Harrison, assistant postmaster, announced today that the total for the months of July, August and September was \$1,847,722, while the total from July 1 to Aug. 15 is \$5,105,622.

Encouraged by the jump in receipts, Mr. Harrison remarked that the Post Office is "generally in the red during this time of the year."

Postal receipts for the quarter ending Sept. 30 are already \$200 ahead of the same quarter in 1939. O. M. Harrison, assistant postmaster, announced today that the total for the months of July, August and September was \$1,847,722, while the total from July 1 to Aug. 15 is \$5,105,622.

Encouraged by the jump in receipts, Mr. Harrison remarked that the Post Office is "generally in the red during this time of the year."

Postal receipts for the quarter ending Sept. 30 are already \$200 ahead of the same quarter in 1939. O. M. Harrison, assistant postmaster, announced today that the total for the months of July, August and September was \$1,847,722, while the total from July 1 to Aug. 15 is \$5,105,622.

Postal Receipts Reveal Increase Over '39 Period

Postal receipts for the quarter ending Sept. 30 are already \$200 ahead of the same quarter in 1939. O. M. Harrison, assistant postmaster, announced today that the total for the months of July, August and September was \$1,847,722, while the total from July 1 to Aug. 15 is \$5,105,622.

Encouraged by the jump in receipts, Mr. Harrison remarked that the Post Office is "generally in the red during this time of the year."

Postal receipts for the quarter ending Sept. 30 are already \$200 ahead of the same quarter in 1939. O. M. Harrison, assistant postmaster, announced today that the total for the months of July, August and September was \$1,847,722, while the total from July 1 to Aug. 15 is \$5,105,622.

Encouraged by the jump in receipts, Mr. Harrison remarked that the Post Office is "generally in the red during this time of the year."

Postal receipts for the quarter ending Sept. 30 are already \$200 ahead of the same quarter in 1939. O. M. Harrison, assistant postmaster, announced today that the total for the months of July, August and September was \$1,847,722, while the total from July 1 to Aug. 15 is \$5,105,622.

Postal receipts for the quarter ending Sept. 30 are already \$200 ahead of the same quarter in 1939. O. M. Harrison, assistant postmaster, announced today that the total for the months of July, August and September was \$1,847,722, while the total from July 1 to Aug. 15 is \$5,105,622.

Townsendites And Progressives Hear John Weir Speak

John R. Weir, chairman of the recent Townsend National Convention in St. Louis, told a joint meeting of local Townsendites and the Progressive Club last night the economic benefits which will come from the plan to increase the minimum wage.

Encouraged by the jump in receipts, Mr. Harrison remarked that the Post Office is "generally in the red during this time of the year."

Postal receipts for the quarter ending Sept. 30 are already \$200 ahead of the same quarter in 1939. O. M. Harrison, assistant postmaster, announced today that the total for the months of July, August and September was \$1,847,722, while the total from July 1 to Aug. 15 is \$5,105,622.

Encouraged by the jump in receipts, Mr. Harrison remarked that the Post Office is "generally in the red during this time of the year."

Postal receipts for the quarter ending Sept. 30 are already \$200 ahead of the same quarter in 1939. O. M. Harrison, assistant postmaster, announced today that the total for the months of July, August and September was \$1,847,722, while the total from July 1 to Aug. 15 is \$5,105,622.

Postal receipts for the quarter ending Sept. 30 are already \$200 ahead of the same quarter in 1939. O. M. Harrison, assistant postmaster, announced today that the total for the months of July, August and September was \$1,847,722, while the total from July 1 to Aug. 15 is \$5,105,622.

Shaffer Is High With 92 Score In Gun Club Shoot

Posting a score of 92, Charles Shaffer led a field of approximately 100 postal marksmen in the weekly shoot of the Seminole Gun Club yesterday afternoon at the rifle range on Lakewood Boulevard. The high scores were turned in by H. B. McCall, 91; A. J. DeWitt, 90; R. L. Dean, 89; Maurice Henshaw, 88; Jack Floyd and O. H. Platt, 87; A. H. Haines, 86; and J. S. Webb, 85.

Encouraged by the jump in receipts, Mr. Harrison remarked that the Post Office is "generally in the red during this time of the year."

Postal receipts for the quarter ending Sept. 30 are already \$200 ahead of the same quarter in 1939. O. M. Harrison, assistant postmaster, announced today that the total for the months of July, August and September was \$1,847,722, while the total from July 1 to Aug. 15 is \$5,105,622.

Encouraged by the jump in receipts, Mr. Harrison remarked that the Post Office is "generally in the red during this time of the year."

Postal receipts for the quarter ending Sept. 30 are already \$200 ahead of the same quarter in 1939. O. M. Harrison, assistant postmaster, announced today that the total for the months of July, August and September was \$1,847,722, while the total from July 1 to Aug. 15 is \$5,105,622.

Postal receipts for the quarter ending Sept. 30 are already \$200 ahead of the same quarter in 1939. O. M. Harrison, assistant postmaster, announced today that the total for the months of July, August and September was \$1,847,722, while the total from July 1 to Aug. 15 is \$5,105,622.

Berlin Says Big Explosions Seen In Outlying Suburbs Of British Capital

A terrific battle over London was being fought this afternoon, authorized Nazis in Berlin said, with German planes raining bombs on London's outlying suburbs and clashing with British pursuit ships.

While cable communication with London remained unimpaired, reports from Berlin said huge explosions from Nazi bombs were observed at Purfleet andarking in the British capital's densely-populated East End.

The gunpowder factories are located at Purfleet. The Barking-Purfleet section is just a short distance north of the Royal Woolwich arsenal in the vicinity is clustered London's most important docks and nearby is the huge Imperial gas works.

Encouraged by the jump in receipts, Mr. Harrison remarked that the Post Office is "generally in the red during this time of the year."

Postal receipts for the quarter ending Sept. 30 are already \$200 ahead of the same quarter in 1939. O. M. Harrison, assistant postmaster, announced today that the total for the months of July, August and September was \$1,847,722, while the total from July 1 to Aug. 15 is \$5,105,622.

Encouraged by the jump in receipts, Mr. Harrison remarked that the Post Office is "generally in the red during this time of the year."

Postal receipts for the quarter ending Sept. 30 are already \$200 ahead of the same quarter in 1939. O. M. Harrison, assistant postmaster, announced today that the total for the months of July, August and September was \$1,847,722, while the total from July 1 to Aug. 15 is \$5,105,622.

Encouraged by the jump in receipts, Mr. Harrison remarked that the Post Office is "generally in the red during this time of the year."

Postal receipts for the quarter ending Sept. 30 are already \$200 ahead of the same quarter in 1939. O. M. Harrison, assistant postmaster, announced today that the total for the months of July, August and September was \$1,847,722, while the total from July 1 to Aug. 15 is \$5,105,622.

Postal Receipts Reveal Increase Over '39 Period

Postal receipts for the quarter ending Sept. 30 are already \$200 ahead of the same quarter in 1939. O. M. Harrison, assistant postmaster, announced today that the total for the months of July, August and September was \$1,847,722, while the total from July 1 to Aug. 15 is \$5,105,622.

Encouraged by the jump in receipts, Mr. Harrison remarked that the Post Office is "generally in the red during this time of the year."

Postal receipts for the quarter ending Sept. 30 are already \$200 ahead of the same quarter in 1939. O. M. Harrison, assistant postmaster, announced today that the total for the months of July, August and September was \$1,847,722, while the total from July 1 to Aug. 15 is \$5,105,622.

Encouraged by the jump in receipts, Mr. Harrison remarked that the Post Office is "generally in the red during this time of the year."

Postal receipts for the quarter ending Sept. 30 are already \$200 ahead of the same quarter in 1939. O. M. Harrison, assistant postmaster, announced today that the total for the months of July, August and September was \$1,847,722, while the total from July 1 to Aug. 15 is \$5,105,622.

Postal receipts for the quarter ending Sept. 30 are already \$200 ahead of the same quarter in 1939. O. M. Harrison, assistant postmaster, announced today that the total for the months of July, August and September was \$1,847,722, while the total from July 1 to Aug. 15 is \$5,105,622.

Townsendites And Progressives Hear John Weir Speak

John R. Weir, chairman of the recent Townsend National Convention in St. Louis, told a joint meeting of local Townsendites and the Progressive Club last night the economic benefits which will come from the plan to increase the minimum wage.

Encouraged by the jump in receipts, Mr. Harrison remarked that the Post Office is "generally in the red during this time of the year."

Postal receipts for the quarter ending Sept. 30 are already \$200 ahead of the same quarter in 1939. O. M. Harrison, assistant postmaster, announced today that the total for the months of July, August and September was \$1,847,722, while the total from July 1 to Aug. 15 is \$5,105,622.

Encouraged by the jump in receipts, Mr. Harrison remarked that the Post Office is "generally in the red during this time of the year."

Postal receipts for the quarter ending Sept. 30 are already \$200 ahead of the same quarter in 1939. O. M. Harrison, assistant postmaster, announced today that the total for the months of July, August and September was \$1,847,722, while the total from July 1 to Aug. 15 is \$5,105,622.

Postal receipts for the quarter ending Sept. 30 are already \$200 ahead of the same quarter in 1939. O. M. Harrison, assistant postmaster, announced today that the total for the months of July, August and September was \$1,847,722, while the total from July 1 to Aug. 15 is \$5,105,622.

Shaffer Is High With 92 Score In Gun Club Shoot

Posting a score of 92, Charles Shaffer led a field of approximately 100 postal marksmen in the weekly shoot of the Seminole Gun Club yesterday afternoon at the rifle range on Lakewood Boulevard. The high scores were turned in by H. B. McCall, 91; A. J. DeWitt, 90; R. L. Dean, 89; Maurice Henshaw, 88; Jack Floyd and O. H. Platt, 87; A. H. Haines, 86; and J. S. Webb, 85.

Encouraged by the jump in receipts, Mr. Harrison remarked that the Post Office is "generally in the red during this time of the year."

Postal receipts for the quarter ending Sept. 30 are already \$200 ahead of the same quarter in 1939. O. M. Harrison, assistant postmaster, announced today that the total for the months of July, August and September was \$1,847,722, while the total from July 1 to Aug. 15 is \$5,105,622.

Encouraged by the jump in receipts, Mr. Harrison remarked that the Post Office is "generally in the red during this time of the year."

Postal receipts for the quarter ending Sept. 30 are already \$200 ahead of the same quarter in 1939. O. M. Harrison, assistant postmaster, announced today that the total for the months of July, August and September was \$1,847,722, while the total from July 1 to Aug. 15 is \$5,105,622.

Postal receipts for the quarter ending Sept. 30 are already \$200 ahead of the same quarter in 1939. O. M. Harrison, assistant postmaster, announced today that the total for the months of July, August and September was \$1,847,722, while the total from July 1 to Aug. 15 is \$5,105,622.

Berlin Says Big Explosions Seen In Outlying Suburbs Of British Capital

A terrific battle over London was being fought this afternoon, authorized Nazis in Berlin said, with German planes raining bombs on London's outlying suburbs and clashing with British pursuit ships.

While cable communication with London remained unimpaired, reports from Berlin said huge explosions from Nazi bombs were observed at Purfleet andarking in the British capital's densely-populated East End.

The gunpowder factories are located at Purfleet. The Barking-Purfleet section is just a short distance north of the Royal Woolwich arsenal in the vicinity is clustered London's most important docks and nearby is the huge Imperial gas works.

Encouraged by the jump in receipts, Mr. Harrison remarked that the Post Office is "generally in the red during this time of the year."

Postal receipts for the quarter ending Sept. 30 are already \$200 ahead of the same quarter in 1939. O. M. Harrison, assistant postmaster, announced today that the total for the months of July