



LOVELY JEANNE Dequine has all the natural attributes to make her the logical choice for "Sweater Queen of 1968"...

\$7 Million In New FSU Buildings

TALLAHASSEE (Sp1) — Students returning to Florida State University this fall will find the landscape changed with the completion of \$7 million in new buildings during the year.

CTP To Study Eye Problems

By Jane Cassberry Eye problems in children will be discussed at the regular meeting of the South Seminole Elementary School Council of Teachers and Parents at 7:30 p.m. Tuesday in the school auditorium.

KEYSTONE HOME MOVIE OUTFIT with ELECTRIC EYE TURRET CAMERA. Complete kit only \$99.95. ZALE'S SANFORD PLAZA 323-1000

65-PIECE MELMAC TEXASWARE. Choose from two enchanting patterns of wonderful Melmac dinnerware. \$19.88. OPEN STOCK \$44.65. NO MONEY DOWN - CONVENIENT TERMS

62-PC. STAINLESS Oneida and International. Choose from two fine patterns. This lovely famous name stainless steel will last for years. \$29.88. NO MONEY DOWN \$2.80 monthly

104-PC. HOSTESS ENSEMBLE service for 8! 45-Pc. Melmac Dinnerware • 50-Pc. Stainless Flatware • Teflon Cookware. \$39.88. NO MONEY DOWN CONVENIENT TERMS

Highlights

TV Time Previews

9-9:30 p.m. ABC. Bewitched. "We're In For A Bad Spell" Lovell Aunt Clara is back this time on an errand of mercy. She's determined to lift a curse on a descendant of one of the Salem witchcraft trials.

Legal Notice

STATEMENT OF OWNERSHIP. PUBLICATION OF THIS NOTICE IS REQUIRED BY SECTION 1103 OF THE FLORIDA STATUTES.

McKinnon Quits Deacon Post

WINSTON-SALEM, N. C. (UPI) — Flamboyant Horace A. McKinnon, whose colorful personality and wit were a major asset of an ornate Deacon Post, resigned Thursday as head of the local group at Wake Forest College.

Sign Bolvin

BOSTON (UPI) — The Boston Bruins of the National Hockey League Thursday announced the signing of defenseman Leo Bolvin to a 1968-69 contract.

ECKERD Drug Stores. SAVE 25% ON ALL PRESCRIPTIONS. SANFORD PLAZA HWY. 17-92 AND ONORA RD. There's an ECKERD DRUG STORE LOCATED CONVENIENTLY NEAR YOU! Includes sections for Camera Department Sale, Cosmetic Dept. Specials, Drug & Toiletries Sale, Power Tool Sale, and various household items.

Horoscope Forecast

FRIDAY, OCT. 1, 1965
GENERAL TENDENCIES
Being too outgoing and expressing your point of view with too much emphasis can get you into trouble with those who are especially sensitive today and tonight.

ARIES (March 21 to April 19)
Fin ideas are excellent provided they are practical and can be handled along with present duties.

TAURUS (April 20 to May 20)
Financial and property matters are of vital importance now, but it requires great care in the handling of such.

GEMINI (May 21 to June 21)
Although you do not agree with what associates are doing, mind, better go along with them to a certain degree since they have gained up on you more or less.

LEO (July 23 to Aug. 23)
In going out with others for fun, be sure you do not try to be the cleverest in the group.

LIBRA (Sept. 23 to Oct. 23)
Think of the wife of Atlas as well as if you were to be striding forward in any ventures.

HERALD Want-Ads Bring Fast Results

Classified Phones
From Sanford Exchange 322-5612
From Seminole County 425-5938

30. Home Appliances
SANFORD ELECTRIC
31. Musical Instruments
32. Swap or Exchange

50. Misc. For Sale
55. Furniture For Sale
56. Business Opport.

57. Houses For Sale
58. Houses For Sale
59. Houses For Sale

60. Mobile Homes - Rent
61. Apartments For Rent
62. Apartments For Rent

63. Autos For Sale
64. Autos For Sale
65. Autos For Sale

Classified

22. Plumbing
23. Painting
24. Wall Drilling

25. Upholstery
26. Misc. For Sale
27. Swap or Exchange

28. Furniture For Sale
29. Business Opport.
30. Home Appliances

31. Musical Instruments
32. Swap or Exchange
33. Misc. For Sale

34. Upholstery
35. Misc. For Sale
36. Business Opport.

37. Houses For Sale
38. Houses For Sale
39. Houses For Sale

Classified Index

1-Last & Found
2-Persepolis
3-Do-It-Yourself

4-Do-It-Yourself
5-Do-It-Yourself
6-Do-It-Yourself

7-Do-It-Yourself
8-Do-It-Yourself
9-Do-It-Yourself

10-Do-It-Yourself
11-Do-It-Yourself
12-Do-It-Yourself

13-Do-It-Yourself
14-Do-It-Yourself
15-Do-It-Yourself

16-Do-It-Yourself
17-Do-It-Yourself
18-Do-It-Yourself

Classified Index

19-Do-It-Yourself
20-Do-It-Yourself
21-Do-It-Yourself

22-Do-It-Yourself
23-Do-It-Yourself
24-Do-It-Yourself

25-Do-It-Yourself
26-Do-It-Yourself
27-Do-It-Yourself

28-Do-It-Yourself
29-Do-It-Yourself
30-Do-It-Yourself

31-Do-It-Yourself
32-Do-It-Yourself
33-Do-It-Yourself

34-Do-It-Yourself
35-Do-It-Yourself
36-Do-It-Yourself

USED CAR Specials

1963 Ford
1964 Oldsmobile
1964 Plymouth

1964 Chevrolet
1965 Chevrolet
1966 Chevrolet

1967 Rambler
1968 Chevrolet
1969 Chevrolet

1970 Chevrolet
1971 Chevrolet
1972 Chevrolet

1973 Chevrolet
1974 Chevrolet
1975 Chevrolet

1976 Chevrolet
1977 Chevrolet
1978 Chevrolet

Champ Reading

Monticello, N.Y. (UPI)
Middle-aged woman of Kingston, Jamaica, Monday in preparation for his Oct. 21 state defense against former

Legal Notice

IN THE CIRCUIT COURT OF THE 11TH JUDICIAL CIRCUIT IN AND FOR SEMINOLE COUNTY, FLORIDA

Legal Notice

IN THE CIRCUIT COURT OF THE 11TH JUDICIAL CIRCUIT IN AND FOR SEMINOLE COUNTY, FLORIDA

Legal Notice

IN THE CIRCUIT COURT OF THE 11TH JUDICIAL CIRCUIT IN AND FOR SEMINOLE COUNTY, FLORIDA

Legal Notice

IN THE CIRCUIT COURT OF THE 11TH JUDICIAL CIRCUIT IN AND FOR SEMINOLE COUNTY, FLORIDA



LT. (jg) WALLY Sudol, flight officer, is the newly assigned line officer of RVAH-5 at SNAAS. He resides at Casselberry. (Navy Photo)

Hospital Notes

September 28, 1965

Admissions
Louise Potopinski, Hiram Sobby, Michael Richardson, May Smith, Jesse Lennon, Hale, L. C. Williams, Hazel Teneh, Gladys Morris, Elizabeth Ayres, Charlie Davis, Mary E. Eplin, Sanford, Mary Waggoner, Anna C. Shafer, Lake Mary, Nora Meles, Winter Garden.

Discharges
Mr. and Mrs. Clayton Hall, Sanford, a girl; Mr. and Mrs. Michael Potopinski, Sanford, a girl; Mr. and Mrs. John W. Shafer, Lake Mary, a girl; Mr. and Mrs. Tommy Harrell, Longwood, a boy.

Christina McCloud, Lulu Belle Wheeler, Judith Sawyer, Elaine Carter, Victoria Harrington, Ines A. Jackson, Tammie Boyton, Maria C. Waggoner, Twila E. James, Linda Willis, Helen Padgett and baby boy, Douglas Usery, Reginald Curtis Altschuler, Sanford; Rudolph Tidemann, DeBarry; Margaret M. Howell, Deltona; Patricia C. McCoy and baby boy, Longwood; Ed Smith, Orlando.

Salesman-Thief
VISALIA, Calif. (UPI) — A gunman who stole \$101 from a clothing store took time to wait on a customer. With the store owner and clerk bound and gagged in the rear, the handily pulled a woman customer and sold her a necktie. The money from the sale was included in the loot.

Western Auto SAVINGS CARNIVAL
Greatest entertainment values on earth!



FREE Home demonstration on Color TV! No obligation!

Truetone 21" Color Theatre
Plus AM-FM radio—FM multiplex Stereo phono—Walnut elegance

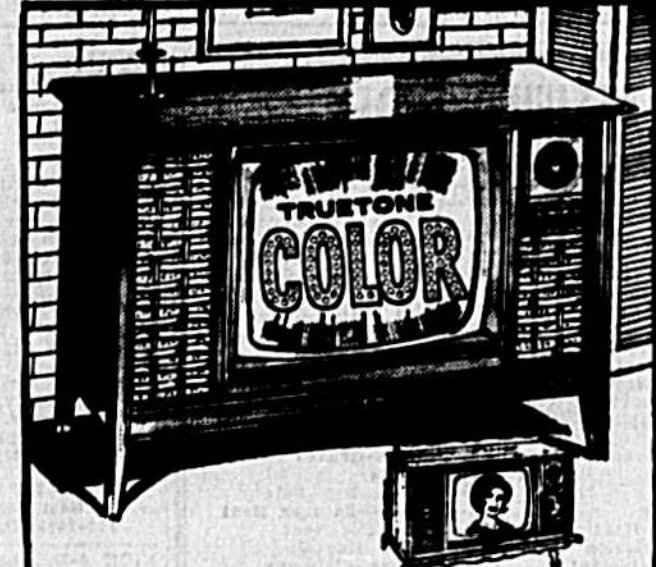
Enjoy 82-channel UHF-VHF Color TV... plus 4-speed stereo phono and sensitive AM-FM radio with exciting FM multiplex stereo reception!

35,000 volt treated picture tube... Automatic Degaussing Color Purifier assures vivid color! 3-stage IP for superb picture. 4-speaker system gives pure stereo depth. Automatic changer, diamond stylus. Drift-free radio, FM stereo indicator. Lighted controls. Magnificent 58" walnut veneer Danish-inspired cabinetry! Free Delivery within trade area. 2DC1675

Nationwide Service! No Trade-In Required!

NO MONEY DOWN! **\$644.00** **GREAT VALUE!** Reg. \$79.95

Truetone... 1st choice over 7,000,000 times!



Truetone 25" Color TV
Massive, hand-crafted cabinetry in rich Walnut or Maple veneer!

• 25,000-volt coated picture tube assures maximum brightness. Rectangular 25" shaped screen glare-free.

• "Quick and Clear" Color... picture comes on in seconds... no color distortion even if not in normal or localized near other appliances!

Tweeter! 82-channel Color TV at savings! TV favorites are vivid, lifelike! Excellent stability and reception, with keyed AGC, 3-stage IP, Twin 6" speakers. Tri-Centric 30-humulated controls for easy, positive tuning. Screen measurement is diagonal. Your whole family will love this wonderful Truetone 25" Color TV... see it today! 2DC1685

Free Delivery in trade area! Nationwide Service!

NO MONEY DOWN! **\$598.00** **Reg. \$79.95** Trade-In \$49.00 Required!

Truetone... preferred over 8,000,000 times!

10 BIG DAYS

TO INTRODUCE OUR 1966 TV'S STEREO'S AND RADIOS
SEPT. 30 THRU OCT. 9 - 1965



21" Truetone Color TV... in 3 custom cabinet styles!

• "Quick & Clear" color... comes on in seconds... no color distortion even if not in normal or near appliances!

• 25,000-volt coated picture tube... assures maximum picture brightness!

• Tri-Centric tuning... 82-channel selection plus sensitive fine tuning, all in one convenient, front-mounted spot!

• Tinted screen face reduces unwanted reflections that hamper your viewing!

Share the family with an exciting new Truetone Color TV... amazingly low-priced! Choice of 3 hand-crafted cabinetry in rich wood-grain finishes... all same price! Diagonal screen measurement. 2DC1675.

Truetone... chosen for fine quality entertainment over 8,000,000 times!

NO MONEY DOWN **\$444.00** **Reg. \$49.00** Trade-In \$49.00 Required!



New and Nifty!
Portable 12" TV

\$88.88 **Reg. \$99.95**

NO MONEY DOWN!

Perfect second set... weighs less than 20 lbs! 82-channel UHF, VHF reception. 14,000-volts at picture power. Diagonal screen measurement. 2DC1613

No Trade-In Required! Nationwide Service!



Great New Stereo Value with FM/AM Radio & FM Multiplex!

• Thrill to dynamic stereo depth from stereo amplifier boasting full 15-15,000 cycle response!

• Sensitive, drift-free AM-FM radio plus FM Multiplex has stereo broadcast indicator light!

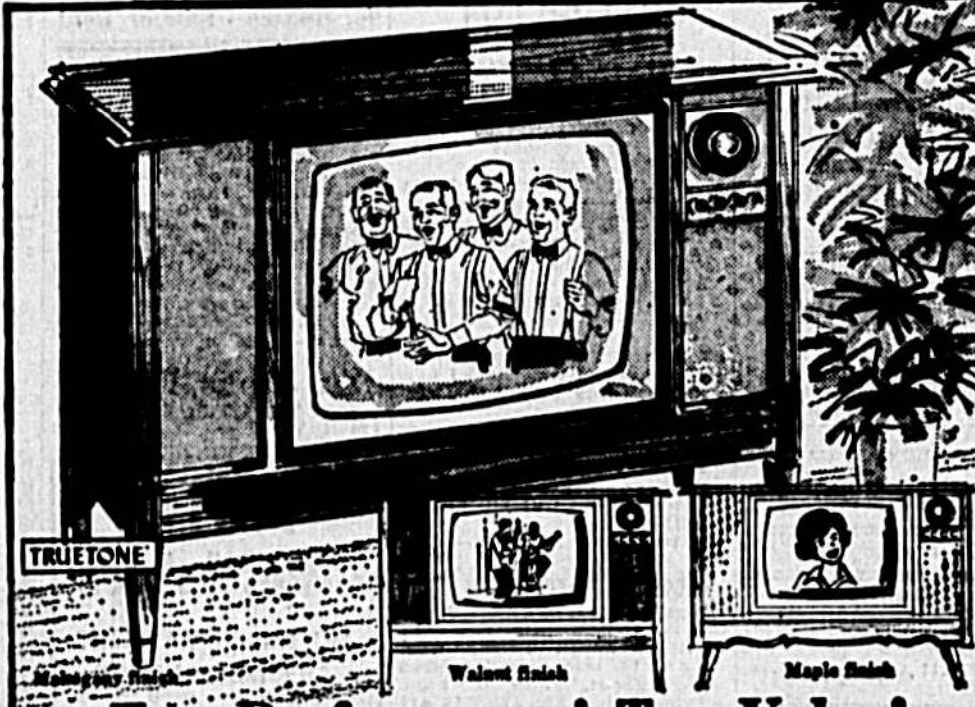
• 4-speed automatic variable with amplifier system, acoustically matched 4 speaker sound system for brilliant stereo reproduction! Full-range controls!

Enjoy the added dimension of stereo! Even add automatic speaker! Complete shut-off when not needed. Lighted slide rule dial for FM-AM.

above picture cabinet. Custom-crafted of woods in mahogany or walnut veneer. Generous record storage, unique sliding top. 2DC2645

NO MONEY DOWN! **\$188.88** **Reg. \$199.95** Trade-In \$49.00 Required!

Truetone... 1st choice over 8,000,000 times!



Top Performance! Top Value!
82-Channel 23" Lo-Boy with Tri-Centric Memory Tuner

Our finest assembled 30,000 volts of hi-power power! Tube-orienting leads! 70-ohm impedance matching warmup. Keyed AGC plus 3-stage IP for sharp, long-distance reception. Matched 6" and 8" speakers. Built-in antenna.

Tinted aluminum picture tube, 25" diagonal measurement. Illuminated controls. Choice rich mahogany-finish. Contemporary or walnut-finish Danish Modern cabinetry. 2DC1613

Sales maple finish. **\$199.95** WITH TRADE

NO MONEY DOWN **\$188.88** **Reg. \$229.95** Trade-In \$49.00 Required!

Nationwide Service! Free Delivery within trade area

Truetone... chosen over 7,000,000 times for family entertainment!

BOTTLED GAS \$6.00
Per Cylinder 100 Pounds
NO INSTALLATION CHARGE



Delivery Most Anywhere in Seminole County
CALL 322-5733

We will loan you a 2 cylinder portable propane gas cylinder for a service charge of \$12.00. All cylinders are insured for the same low \$2.00 per cylinder rate.

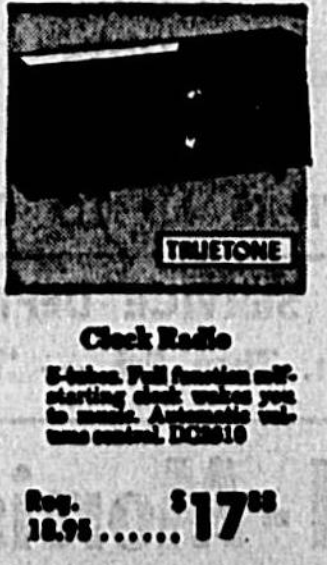
Florida propane gas service...
100 W. 1st STREET SANFORD



Truetone Golden Thrush
Transistorized Stereo

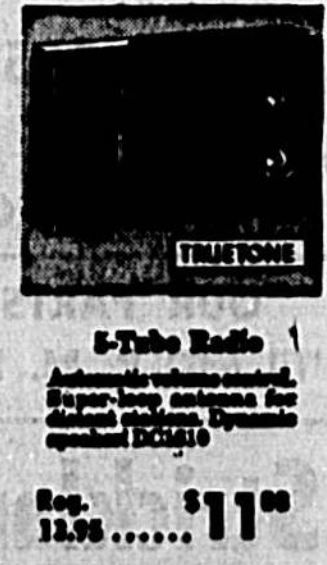
New solid state chassis! Finer sound instantly! No tubes to replace! 4 speeds, 4 speakers! Drop-down automatic changer. Brown and gold. 4DC861

\$59.77 **Reg. \$44.95**



Clock Radio
5-tubes. Full function self-starting clock radio with picture control. 2DC810

\$17.00 **Reg. \$16.95**



5-Tube Radio
Automatic volume control. Super-bay antenna for maximum reception. 2DC1010

\$11.00 **Reg. \$10.95**



Solid State Radio
5-transistor solid state chassis. No tubes! Super-bay antenna for maximum reception. 2DC1010

\$17.00 **Reg. \$16.95**

Western Auto ASSOCIATE STORE
212 E. 1st. STREET
SANFORD, FLORIDA
Phone 322-4403

END OF ROLL
SEPTEMBER 30, 1965