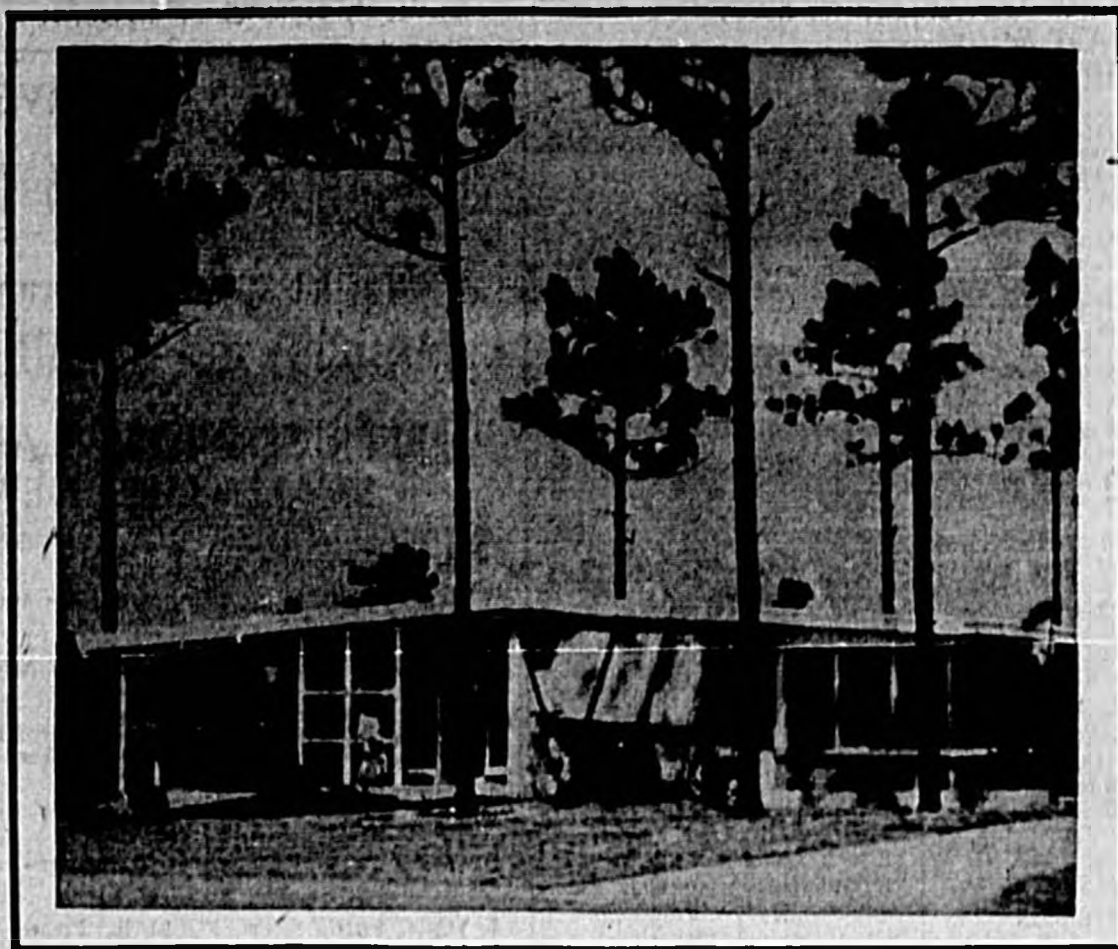


South Pinecrest

A home is your most important purchase!
Choose wisely its location and construction!



Everyday pleasant living in an atmosphere of friendly neighborliness is yours in South Pinecrest. So conveniently located to stores, downtown, churches & schools. South Pinecrest homes are built for comfort and low upkeep. All carefully constructed with select materials... good workmanship. Large living room, tile baths, 3 and 4 bedrooms with the very latest in kitchens. **BUY WITH CONFIDENCE, OWN WITH PRIDE... A HOME IN SOUTH PINECREST.**

Double check the values of Odham & Tudor homes... City sewerage & water, General electric refrigerator... stove... hot water heater, Jalousied windows, Terrazo tile floors, Duo-Therm space heater, paved streets with curbs, sprigged lots, 5 ply built up roofs with marble chips.

Finance Plans

F.H.A. IN SERVICE

\$1,150. Down Payment
(Includes closing costs)

\$74. Per Month
(Includes taxes and Ins.)

F.H.A.

\$2,075. Down Payment
(Includes closing costs)

\$71 Per Month
(Includes taxes and Ins.)

South Pinecrest Homes Are Priced From
\$12,325. (1Bath) to \$16,300. (2Bath)



P. S. In addition to the above Finance Plans we always have several new fine homes 6 months to 1 year old. You can purchase on very reasonable terms.

Odham & Tudor, Inc.

BUILDERS OF FINER HOMES

Call 2100 or 2980 For An Appointment At Your Convenience
Brailey Odham President
Corner Hi-way 17-02 & 27th St.

**Drive
Out
Today!**

Shop and Save
in Sanford

The Sanford Herald

AN INDEPENDENT DAILY NEWSPAPER

SANFORD, FLORIDA, FRIDAY, JANUARY 14, 1957

United Press Owned Wire

NO. 264

If Your Herald is Not
Delivered By 8 P. M.
Call 1821 Before 7 P. M.
For Delivery

Mercury Dips To 34 Here This Morning

Housing For Mentally Ill Juvenile Detention Home Sought By Senator

A detention home for delinquent juveniles and facilities for the housing of mentally ill has been proposed for Seminole County by Senator Douglas Stenstrom.

In a letter to the Board of County Commissioners Senator Stenstrom said: "For a long time, I have been interested in the provision by our county of some facility for housing persons who have been declared mentally incompetent and who must be confined while awaiting admission to our state hospitals, which, as you know, have long waiting lists."

"I have also been interested in the provision of some facility for the housing of juveniles who, in the judgment of the Court, must be confined while awaiting their acceptance at our State Industrial School for Boys at Marianna and our Industrial School for Girls at Ocala," said Senator Stenstrom.

"At the present time, as you know, persons in the above categories are having to be confined in our county jail," he said. "I am advised that at the present time there are three persons who are mentally ill in the county jail waiting to get into the state hospital," the Senator said in his letter to the Board of County Commissioners.

"From time to time, said Senator Stenstrom, it has been necessary to confine juveniles on the ground floor of our jail. This of course, is done only in the most serious cases and generally cases in which there is absolutely no alternative."

Expressing the opinions of many at the present time, Senator Stenstrom stated "I think we all agree that the county jail is not the place for our mentally ill," and he added, "Most agree that the county jail is not the place for our juveniles, particularly those in the 10, 11 and 12 age group and

No Crop Losses Reported

The thermometer dipped to a freezing 34 this morning in Sanford with one housewife complaining that "the clothes I am hanging out freeze as fast as I hang them."

However, there was no frost in the Sanford and Seminole County areas. Weathermen said the cold brought frost to the north and part of the central section, but that it probably was not extended enough to seriously damage crops. There had been no reports of crop losses at The Sanford Herald office up until noon today.

The cold wave gripped much of the rest of the nation had a solid hold on Florida today, however.

Plant City, the center of the state's strawberry growing district in Hillsborough County, reported sleet early this morning. Temperature in the area was down to around 35 in some sections. Tallahassee and Panama City caught the first icy blast Thursday afternoon as the cold front blew into the state and produced sleet in both places.

Tallahassee had a low of 24 this morning. It was 28 at Cross City, around 29 in Tampa and in the low 50's in downtown Miami.

Other early morning readings included 29 at Lake City, 30 at Gainesville, 33 at DeLand, Leesburg and the Ocala airport, 42 at Sebring, 38 at Lake Wales and Haines City.

Fog winds brought fresh snow to scattered sections of the country and gusts up to 35 miles per hour sent dust clouds swirling in the plains.

Buffalo, N. Y., was buried by a 7-inch snowfall during a two and one-half hour period Thursday night, boosting the total accumulation there to 14 inches.

Records continue to fall as below zero readings gripped most of Pennsylvania, New York state, New England, sections of the Great Lakes and upper Mississippi Valley the Northern Rockies and the Northern Plateau.

A three below zero reading in (Continued on Page Four)

Stockholders Meet Reveals Increase

By MARIAN JONES
The Annual Stockholders meeting to the Citicorp Bank of Orlando was held Tuesday, Jan. 4 p.m. in the Oriedo Memorial Building.

The meeting was called to order by C. R. Clonts, president, and the roll call revealed an attendance of approximately 40 people, representing the 400 shares of stock.

During the meeting, it was pointed out by Charles G. Shaffer, Executive vice president, that the stockholders had received \$30,000 in dividends since the bank opened in 1948. He also cited the increase in surplus from the original \$15,000 to the present \$75,000 and the increase and undivided profits from \$10,000 to \$19,500.

Shaffer also advised that interest on savings accounts over \$100 had been increased to three per cent effective Jan. 1, 1957.

Clonts expressed profound regrets in the loss of one of the most valuable board members and citizens of the community, in the recent death of R. W. Enos.

The following slate of directors was selected for the ensuing year: C. R. Clonts, Charles G. Shaffer, H. A. Ward, Jr., C. S. Ward, Jr., ETAOI HRDL AOIO C. B. Lee, R. F. Wheeler Jr., R. F. Ward, and W. G. Kilbee.

The officers, directors, and employees were highly complimentary by the stockholders on the splendid operation of the bank in the past. The meeting adjourned at 5 p.m. and refreshments were served to those present.



TAKING PART in the 21st annual opening of the George Barr Umpire School at Longwood yesterday were, left to right: RH Agron, the Rev. Robert Spear, Barr, Mrs. John J. McGraw, Gene Bethell, John Krider and Dick McLaulin. (Photo by Jameson.)

Salvation Army Aids 113 Families At Christmastime

The Salvation Army released its report of Christmas contributions and the assistance which it rendered to underprivileged families of the area.

L. Marcella Reynolds, Officer-in-Charge of the Sanford Salvation Army Branch made the report public this morning.

L. Reynolds and the Assistant Officer, L. Virginia A. Kellner stated this morning that 113 families were supplied with food making a total of 585 separate individuals assisted directly.

Ten families were taken care of indirectly, the report stated with 130 toys given indirectly to needy children and 73 toys given directly. 100 bags of candy, fruit and nuts were given directly to needy children and 300 sunshine bags given directly to hospitals, rest homes, county home and jail. These bags, said the officers, contained candy, fruit, nuts and a small calendar.

Reporting on the income and disbursement, the two Salvation Army Officers said that \$1,116.73 were received in the kettles and \$377.41 was received in contributions.

Of this money, \$1,118.33 was spent for relief, \$135 for salaries, \$90 for publications, \$169.42 went to divisional expenses and \$181.40 was spent for sundries. The total income and disbursement was \$1,694.17.

"Our boys are not behind bars at the state industrial school and they should not be behind bars in Seminole County except in the most serious types of offenses," he said.

"I would be glad to meet with the board at any time in order to discuss further this proposal," he concluded.

Feasibility Of Local United Drive To Be Discussed Jan. 24

The possibilities of forming a United Drive in Sanford and Seminole County will be discussed at a meeting set for Thursday, Jan. 24 at 8 a.m. in the commissioners room in the Sanford City Hall.

John Krider, manager of the Seminole County Chamber of Commerce has notified all organizations of the forthcoming meeting and has asked that a representative attend.

Several efforts have been made in the past to create a United Drive for funds to support charitable organizations and eliminate the frequency of money appeals in the Seminole County area. However, none of them have been successful.

In recent panel discussions, the advantages of one united drive has been brought out by civic leaders.

Miss Bally Eastwood, executive secretary of the United Services Organization in Orange County will attend next week's meeting to explain the operation and advantages of the United Community Services and to answer questions from representatives attending the meeting.

Krider asked that "every effort be made to attend this important meeting." He also requested that all interested parties part in the discussions.

16 Servicemen Die In Air Disasters

By UNITED PRESS
At least 16 servicemen have been killed in military air disasters, 12 of them in a fiery crash of an Air Force weather plane in Alaska.

There were no survivors in the wreck of the storm charting weather plane. It was carrying about 10,000 gallons of gasoline when it crashed and exploded Thursday shortly after taking off from Fairbanks, Alaska.

Hours later, a \$1.2 million Air Force B57 bomber crashed into a Biggs Air Force base motor pool, killing its two crewmen and igniting thousands of gallons of gasoline and jet fuel.

Two Marines were killed Thursday near Camp Pendleton, Calif., when they parachuted from "Flying Boxcars" into 35-mile-per-hour winds as part of the Navy-Marine "Operation Ski Jump" training exercises.

The Alaska wreck occurred as the plane, starting on a storm tracking mission over the Aleutian Islands and the Bering Sea. The craft went down about 3 1/2 miles north of Eielson Air Force Base and exploded in flames.

Rescuers, who cut a trail to the wreckage with snow wassels, found no sign of life at the crash scene. They said debris was littered over a 200-yard area.

The Air Force in Washington as missing. Among them were the 11 crewmen of the W-39, which officially listed the 12-man crew as missing. Bobbie H. Spencer, Memphis, Tenn.; M. Sgt. Woodrow B. Russell, Birmingham, Ala.; and Airman Roger D. Sigmon, Tarpon Springs, Fla.

3 Minor Accidents Told In County

Three minor accidents which have occurred in the past 36 hours were reported by Florida Highway Patrolman Gene Coffman.

Wednesday night, shortly before midnight, at the 17-92 intersection with the Dog Track Road, a 1954 Buick Sedan, driven by Curfield F. Hutches, 51, of St. Petersburg collided with a 1950 Ford Coach driven by Mrs. Margaret R. Straight of Orlando.

Minor damage was reported to fenders and headlights of both cars.

Shortly after midnight yesterday a 1950 Plymouth Sedan driven by William T. Phelps, 17, Orlando ran through the barricade on 17-92 in Death Valley, smashing into the windshield of a car. Phelps suffered minor lacerations from the broken glass.

In Oriedo, at 2:40 p.m. yesterday, a 1950 Chevrolet Coach driven by Charlie G. Gaine, 51-year-old Negro collided with a 1953 Chevrolet panel truck driven by George C. Scott, 43, of Sanford.

Gaine, according to the FHP patrolman, sideswiped Scott with minor damage to both cars. Charges were placed against Gaine.

Patrolman Coffman said motorists must "slow down. They are going too fast on the road now under construction. Watch passing zones."

And adding to his comments the patrolman warned "Turn ear lights on when it is dark."

Nearly 100 On Hand At School Opening

Crowding into the classroom of the George Barr Umpire School at its 21st annual opening yesterday afternoon at the Longwood Hotel were nearly 100 friends of the popular former National League Umpire, gathered to wish him and his instructors and students the best of luck.

The Rev. Robert Spear, pastor of the Church of the Nazarene in Sanford, offered the invocation, following which L. V. (Dick) McLaulin, for many years Barr's nearly 40 students from every corner of the nation, stand and introduce themselves to the visitors from Sanford, Orlando, Winter Park and Longwood. McLaulin did the honors in presenting these visitors to the students and then turned the meeting over to "The Boss."

Barr, in his rapid-fire, straight-shoulder manner after introducing Mrs. Blanche McGraw, widow of the late, famed manager of the N. Y. Giants, John J. McGraw, told of the aims and ob-

Over 200 Attend Adult Classes

There are presently over 200 which is taught on Monday and Tuesday from 8 p. m. to 9 p. m. The General Education classes include instruction for the beginner who cannot read or write through the 12th grade in high school.

In addition, subjects are offered individually in areas that will help an adult in their work or everyday living. Subjects are usually given on an individual basis and an adult can work for a high school equivalency diploma. Credit is given for previous high school credit.

Ceramics and Exploratory Art courses are also given at Seminole High School at night. Ceramics is offered every Tuesday and Wednesday nights and the Art Course is offered on Thursday night. These classes are available from 7 p. m. to 10 p. m.

The Seminole County Vocational school offers business subjects either in the day or night program. Subjects offered are typing, book-

American Legion Calls Important Session Monday

An important meeting of the Campbell-Lesson Post No. 53, American Legion will be held Monday night beginning at 7 o'clock at the Legion Hut on Seminole Blvd.

An old fashioned slum gullion (beef stew) supper will be served, according to Lynn N. Lyon, Post Commander.

No reservations are necessary, said Lyon.

"Matters of great importance will be brought up at Monday night's meeting," Lyon said, "and we are expecting a good turnout."

FBI Is Searching For \$50,000 Pot

BOSTON — The intricate machinery of the FBI clicked into high-gear today in the search for a missing solid gold, \$50,000 coffee pot.

The diamond-knocked perculator disappeared from an air freight counter at Logan Airport Wednesday and FBI agents joined the search when the package failed to show up at any of 34 possible destinations across the country.

Authorities first believed the fiber suitcase containing the electric perculator had been shipped to the wrong address. Clerk frantically checked every air freight terminal they could find before admitting that thieves may be making their morning java in the jeweled-studded pot.

4-H Boys Plant Pine Seedlings At Pinecrest

Slash pine seedlings were planted yesterday at Pinecrest School under the supervision of C. F. Lind of the Soil Conservation Service.

The seedlings, 50 of them, were donated to the school by the Florida State Forest Service and were planted by boys of the 4-H Club in line with the conservation program that is to be carried out in the schools by the Sanford Garden Club.

The beautification program was started about 10 months ago at (Continued on Page Four)



CONSERVATIONIST C. F. LIND SUPERVISES planting of slash pine seedlings at Pinecrest School. Shown planting the pines are 4-H members Danie Kaudses, Bobby Anthros, John Taylor, and Nathan DeWitt. Lind is fourth from left. (Staff Photo.)

Dr. Park Sr. Is Re-Elected Head Of Medical Staff

The medical staff of Seminole Memorial Hospital held its annual election of officers.

Dr. C. L. Park Sr. was re-elected Chief of Staff with Dr. Vincent Roberts selected to fill the position of Chief of Staff.

Other officers named were Dr. Vann Parker as Secretary-Treasurer and the heads of the three departments.

Dr. Leonard Munson was re-elected as Chief of Medicine; Dr. Wade Garner, Chief of Obstetrics; and Dr. John Morgan, Chief of Surgery.

Dr. Park, following the election of officers, named members of two standing committees.

To head the Credentials Committee, Dr. Park named Dr. T. F. McDaniel as chairman with Dr. Orville Barks and Dr. C. L. Park, Jr. members.

On the Medical Audit Committee, Gordon Stanley was appointed chairman with Dr. Vincent Roberts, Dr. George Starke, and Dr. John Morgan as members.

Officials To Discuss Museum's Operating Plans At Joint Meet

A joint meeting of the Board of Seminole County Commissioners, the Board of Seminole County Commissioners, and the members of the General Henry Shelton Sanford Memorial Library and Museum Committee has been called for Monday night in the Commissioners Room of the Sanford City Hall.

City Manager Warren E. Knowles yesterday advised the three bodies that the meeting has been scheduled.

A general discussion of the plans for operating the Memorial Library and Museum will be held which involves the expense of providing a librarian.

The meeting grew out of discussions at last Monday night's meeting of the Board of Sanford City Commissioners when Mayor David Gatchel reported on a meeting which he attended at the General Henry Shelton Sanford Memorial

Congress Is Urged To Validate State Antisubversion Law

WASHINGTON — Sen. Styles (R-Tenn.) and several other senators have urged Congress to validate state anti-subversion laws.

The senators introduced a bill Thursday aimed at overriding a Supreme Court decision last year which threw out the conviction of Steven Nelson, an accused Communist leader, under a Pennsylvania law.

Bridges and others introduced the measure in the last Congress shortly after the court decision. It died in the Senate Judiciary Committee.

Additional
Local News
On Page 4

All Church Notices must be presented at The Herald office by 10 a. m. on the day before publication.

Church Notices



FIRST BAPTIST CHURCH OVIDO

Lois L. Day Pastor
Sunday School 9:45 a.m.
Morning Worship 11:00 a.m.
Training Union 6:15 p.m.
Evening Service 7:15 p.m.
Wednesday Prayer Service 7:30 p.m.

WELLSBERRY BAPTIST CHURCH

Geneva
Pastor Charles W. Hamel Jr.
Sunday morning services: 10 a.m. Sunday School, 11 a.m. Morning Worship
Sunday evening services: 7:30 p.m. Training Union, 8:00 p.m. Evening Worship
Wednesday 7:30 a.m. Prayer meeting

MEMBERLY OF GOD CHURCH

12th St. and Laurel Ave.
Rev. H. M. Snow
Sunday School 9:45 a.m.
Morning Worship 11 a.m.
Fellowship Service 6:00 p.m.
Evangelistic "All Day" 7:45 p.m.
Prayer and Bible Study Wednesday at 7:45 p.m.
"Remember a glad hand invites you to worship with us."

FOSTER CHAPEL METHODIST CHURCH OVIDO

Rev. George E. Carlson, Minister
9:45 a.m. Sunday School
11:00 a.m. Worship Service
8:00 p.m. Worship Service

SOUTH SIDE BAPTIST CHURCH

East 5th St. At Park Ave.
The end of your search For a friendly Church.
Gerald H. Price Pastor
Milton Higginbotham S.S. Superintendent
Sunday Bible School 10 a.m.
Fellowship 11 a.m.
Bible Study 7 p.m.
Evangelistic Preaching 7:45 p.m.
Prayer Meeting (Wed.) 7:45 p.m.
Missionary Prerential You Are Welcome

CENTRAL BAPTIST CHURCH

Rev. J. W. Farnham, Pastor
Cov. Westwood St. Oak Ave.
Sunday School 9:45 a.m.
Morning Worship Service 11:00 a.m.
Training Union 6:15 p.m. R's a family affair.
Evening Worship 7:30 p.m.
"Come thou with us and we will be thy food."

SANFORD REVIVAL CENTER

Rev. L. P. Tucker, Pastor
Sunday School 10 a.m.
Morning Worship 11 a.m.
Evening Evangelistic Service 7:45 p.m.
Weekly Services: Tuesday and Thursday 7:45 p.m.
Regula. Saturday Morning Broadcast over WTRR 10:35 a.m.

LUTHERAN CHURCH OF THE REDEEMER

233 W. 25th Place Phone 1753
The Rev. Phillip Schlemmann Pastor
Sunday School 9:15 a.m.
Bible Class 9:15 a.m.
Service 10:30 a.m.
"Prayer For The Day" phone 1928

FIRST CHURCH OF CHRIST, SCIENTIST.

800 E. Second St.
Sunday Services 11:00 a.m.
Sunday School 11:00 a.m.
Wednesday Evening Meetings 8:00 p.m.
Lesson Sermon "Life"
Reading Room located in foyer of Church Building open to public 8:30 to 4:30 p.m. Tuesdays and Thursdays.
A cordial invitation is extended to all to attend our services and use the Reading Room.

ST. LUKE'S LUTHERAN

In Slavia (Near Oviedo)
Rev. Stephen M. Tuby Pastor
Morning Worship 8:25 a.m.
Radio Mission Broadcast at 8:30 a.m. over WORT (749 kc)
Sunday School 9:00 a.m.—for all age groups.
Christian Day School — Monday through Friday 9:00 a.m.—(All elementary grades and kindergarten.)

CHURCH OF JESUS CHRIST OF LATTER DAY SAINTS

A. G. White Branch President
City Hall
Sunday School 10 a.m.
Sacrament Meeting 8 p.m.

ELDER SPRINGS BAPTIST CHAPEL

Elder Springs
Sponsored by First Baptist Church Sanford, Fla.
Sunday School 10:00 a.m.
W. O. Stansell, Superintendent
Preaching 11:00 a.m.
Dr. H. H. Martin, Preacher
Evening Service 7:30 p.m.

PAOLA CHURCH OF CHRIST

Lord's Day Bible Study at 10 a.m.
Worship Service 11:00 a.m.
Preaching Service 6:30 p.m.
Everyone Welcome

CHULLOYA BAPTIST CHURCH

C. G. Swaggerty Pastor
Sunday School 10 a.m.
Morning Worship Service 11 a.m.

FREE METHODIST CHURCH

Laurel Ave. at Oak St.
Sunday School 9:45 a.m.
Morning Worship 10:45 a.m.
M. Y. 7:00 p.m.
Evening Evangelistic 7:45 p.m.
Wednesday night prayer and praise service 7:30 p.m.
Sermons by the pastor.
Evening Worship Service 7:30 p.m. Sermons by the pastor.
Prayer Meeting Wednesday 7:30 p.m.

THE SALVATION ARMY

214 East Second Street Meetings
Sunday School 10:00 a.m.
Mission Meeting 11:00 a.m.
Open Air (Street Meeting) 8:30 p.m.
Y.P.L. 7:00 p.m.
Evangelistic Meeting Tuesday
Corp. Cadets 3:30 p.m.
Band Practice 4:00 p.m.
Ladies Home League 7:30 p.m.
Thursday Prayer Meeting 7:30 p.m.
Saturday Open-Air (Street Meeting) 8:30 p.m.

UPSALA COMMUNITY PRESBYTERIAN CHURCH

Rev. C. C. White Minister
Mrs. Clever Morris Pianist
Mrs. Patricia Summerlin Asst. Pianist
George Parnell, Asst. Supt. of Church School
Church School 10 a.m.
Worship 11 a.m.
Evening Worship 8:00 p.m.
"Everybody invited to attend our services."

FIRST METHODIST CHURCH

Rev. Milton H. Wyatt Pastor
Educational Director Rachel Beasley
9:45 a.m. Church School
Classes for all ages.
11 a.m. "The Ideas"
8 p.m. M.Y.F.
7:30 Evening Service "Meet Barnabas"
7:15 Organ Vespers
Broadcast over W.T.R.R.
8:30 p.m. Fellowship for young people.

LARK MARY BAPTIST CHAPEL

Lark Mary, Fla.
Pastor — Rev. W. A. Ellenwood
Sunday School 9:45 a.m.
Morning Worship 11 a.m.
Training Union 6:30 p.m.
Evening Worship 7:30 p.m.
Prayer Meeting Wed. 7:30 p.m.

PAOLA WESLEYAN METHODIST CHURCH

6 Miles West on Rt. 44
Sunday School 9:45 a.m.
Morning Worship 10:45 a.m.
Wesleyan Youth 6:45 p.m.
Evening Worship 7:30 p.m.
Wednesday Prayer Meeting 7:30 p.m.
Everyone Welcome
Rev. Cecil W. Shaffer

CHURCH OF GOD

Rev. M. W. Henderson, Pastor
French Ave. and 22nd St.
Sunday School 9:45 a.m.
Evangelistic Service 7:30 p.m.
Mid-Week Service Tuesday 7:30 p.m.
Young People Service Thursday 7:30 p.m.

WELLSBERRY METHODIST CHURCH

Citrus Heights
Rev. Albert S. Farrier, Pastor
Sunday School 10 a.m. Clifford E. Johnson, superintendent.
Preaching Service 11 a.m.
M.Y.F. 3 p.m.
Prayer meeting, Wednesday, 7:45 p.m.

THE CHRISTIAN & MISSIONARY ALLIANCE CHURCH

Park Ave. & 14th St.
Sunday School 9:45 a.m.
Worship 10:45 a.m.
Evening 7:45 p.m.
Youth Fellowship 8:30 p.m.
Wednesday Chapel Choir Rehearsal 7 p.m.
Bible Study and Prayer 8 p.m.
Thursday Cherub Choir Rehearsal 6:30 p.m.
Carol Choir Rehearsal 7:00 p.m.
The Ladies' Missionary Society meets for lunch and prayer on the 2nd Tuesday of each month at 2:30 p.m.
"A friendly church for the whole family."

SANFORD SEVENTH-DAY ADVENTIST CHURCH

Noventh St. and Elm Ave.
Pastor A. C. McClure
Sabbath School Saturday 9:30 a.m.
Worship Service 11 a.m.
Prayer Meeting Wednesday 7:30 p.m.

LAKE MONROE BAPTIST CHURCH

Pastor, B. C. Brown
A Church With A Friendly Welcome
Three miles west of Sanford on

WEST SIDE MISSIONARY BAPTIST CHURCH

Corner of West Fifth and Holly
"WELCOMES YOU"
Pastor Wm. L. Stephens
Associate B. D. Creighton
Sunday School 10 a.m.
Morning Worship 11 a.m.
Bible Study 7 p.m.
Evening Service 7:45 p.m.
Mid-week Service Wednesday 7:45 p.m.

"A GOING CHURCH FOR A COMING LORD" COME AND SEE THERE IS A REASON!

CHURCH OF THE NAZARENE
"Sanford's Singing Church"
Second St. and Maple Ave., West
Sunday School 9:45 a.m.
Morning Worship 10:45 a.m.
Training Department 6 p.m.
Evening Evangelistic 7 p.m.
Mid-week Prayer meeting each Wednesday 7:45 p.m.
The Church of the Nazarene is Wesleyan in doctrine evangelistic in appeal, and world-wide in mission.
"Whosoever will may come".

FIRST BAPTIST CHURCH OF GENEVA

Jack L. Stewart Pastor
Sunday School 10 a.m.
Morning Service 11 a.m.
Evening Service 7:30 p.m.
Training Union 6:30 p.m.
Preaching 7:30 p.m.
Wed. Prayer Service 7:30 p.m.

FIRST BAPTIST CHURCH

819 Park Ave.
(A Southern Baptist Church)
W. P. Brooks Jr. Pastor
F. E. Fisher, Associate Pastor
Kirby Rogers, Director of Music
Mrs. Marvin Millam, Organist
Morning Worship 9:45 a.m.
Morning Worship 11 a.m.
Training Union 6:15 p.m.
Evening Worship 7:30 p.m.
Wednesday Service 7:30 p.m.
(Nursery for all services)
(Earphones for hard of hearing)

WELCOME THE LITTLE BROWN CHURCH ON THE HILL

(Congregational)
Corner Park Ave. and 24th St.
J. Bernard Root, Minister
Fred Ensminger, Associate
Sunday School 9:45
Classes for all ages. A nursery for the little ones.
Morning Worship 11
Sermon: "Get Rid Of Your Anxieties"
Pilgrim Fellowship 7:30

HOLY CROSS EPISCOPAL CHURCH

Cor. Park & 14th St.
The Rev. John W. Thomas, Rector
8:15 a.m. Holy Eucharist
11 a.m. Family Service and Church School
11 a.m. Morning Prayer and Sermon
Services through the Week: Tuesday and Thursday — Holy Communion — 7:30 a.m. Wednesday — Holy Communion — 10 a.m. Wednesday — 7:30 p.m. — Senior Choir Practice Thursday — 3:45 p.m. — Junior Choir Practice Saturday — 3:45 p.m. — Sacrament of Penance

FIRST CHRISTIAN CHURCH

Where You Are Never a Stranger
But Once!
1607 Sanford Ave.
Sunday School, 9:45 a.m. M. J. East Evans, Supt.
Morning Worship, 11 a.m., with praise, Scripture reading, prayer, Communion, and preaching. Nursery facilities and off-street parking are available.
Christian Youth Fellowship, 6:30 p.m.
Evening Worship, 7:30, emphasizing congregational singing. Pastor Perry L. Stone will preach at both morning and evening services.
The presence of visitors is appreciated. New, Navy, and winter residents are extended a special invitation.

Additional Church News On Page 7

GRAMKOW FUNERAL HOME

110 S. W. 17th St. Sanford, Fla.
PHONE 141

COUNTERPANE CATHEDRAL



There was a man who had stopped going to church because, he said, "Church doesn't make me feel any nearer to God." One night he stepped into the children's room to kiss them good night. And suddenly he felt as though he were in church. There was a pillowed altar and a devout congregation in prayer. Yet he didn't feel any nearer to God. And in that moment he learned the truth that every soul must learn; religion is not some outer force that brings God close to a man. Religion is man's inner yearning which reaches up and discovers how near God is. And so, from the example of his children, he learned how to find the faith which had eluded him. And, finding it, he returned to church to share with other Christians the rich experience of worship . . . to receive the spiritual gifts of Word and Sacrament . . . to serve Christ in the vital, challenging work of the Church. He knows that in church—or in a moonlit nursery—God is near those who want Him near!

THE CHURCH FOR ALL . . . ALL FOR THE CHURCH

The Church is the greatest factor on earth for the building of character and good citizenship. It is a storehouse of spiritual values. Without a strong Church, neither democracy nor civilization can survive. There are four sound reasons why every person should attend services regularly and support the Church. They are: (1) For his own sake. (2) For his children's sake. (3) For the sake of his community and nation. (4) For the sake of the Church itself, which needs his moral and material support. Plan to go to church regularly and read your Bible, daily.

Day	Book	Chapter	Verses
Sunday	Genesis	1	1-28
Monday	Genesis	12	1-13
Tuesday	Genesis	22	1-18
Wednesday	Genesis	27	1-13
Thursday	Genesis	37	1-36
Friday	Genesis	41	1-54
Saturday	Genesis	46	1-7

This "Support The Church" Series, Published Each Week in the Sanford Herald with the Approval of the Seminole County Ministerial Association, is Made Possible by the Co-operation of these Well-known Business Establishments:

- | | | | |
|-----------------------------------|---|--|-----------------------------------|
| MRS. APPLEBY'S RESTAURANTS | FLORIDA STATE BANK of Sanford | BERRY'S WAREHOUSE FURNITURE CO. | SANFORD ATLANTIC NATIONAL BANK |
| SANFORD LINOLEUM & TILE COMPANY | HAROLD H. KASTNER CO. | ROTELER WHOLESALE CONFECTIONERY | BOYD - WALLACE MUTUAL INSURANCE |
| MERANEY - SMITH PAINT & GLASS CO. | W. W. HORNE TRUCK BROKERAGE CO. INC | WILSON - MAIER FURNITURE CO. | BROWN'S AMOCO SERVICE C. D. Brown |
| SENKARIK GLASS & PAINT CO. | AMERICAN OIL CO. M. R. Strickland, Contractor | THE TEXAS COMPANY J. C. Davis, Consignee | REIMANN CHRYSLER - PLYMOUTH |
| GENE'S SEMINOLE DRY CLEANERS | NICHOLSON BUICK CO. | RITZ THEATRE | H. M. GLEASON Lake Mary |
| SHERWOOD TRACTOR CO. | R. L. HARVEY PLUMBING | NEHI BOTTLING COMPANY | BRISSON FUNERAL HOME |
| CELERY CITY PRINTING CO. | THE MAYFAIR INN | PROGRESSIVE PRINTING CO. | ST. JOHN'S REALTY CO. |
| SMITTY'S SNAPPIN' TURTLE | HOLLER MOTOR SALES | ROY WALL PLUMBING | WADES SUPREX MARKET |
| SANFORD ELECTRIC CO. | THE KILGORE SEED CO. | SANFORD AUTO PARTS | WARNER'S GULF SERVICE |
| STINE MACHINE & SUPPLY CO. | SANFORD BOAT WORKS | SHERMAN CONCRETE PIPE CO | WHEELER FERTILIZER CO. |

ETTA BETT



THE PHANTOM



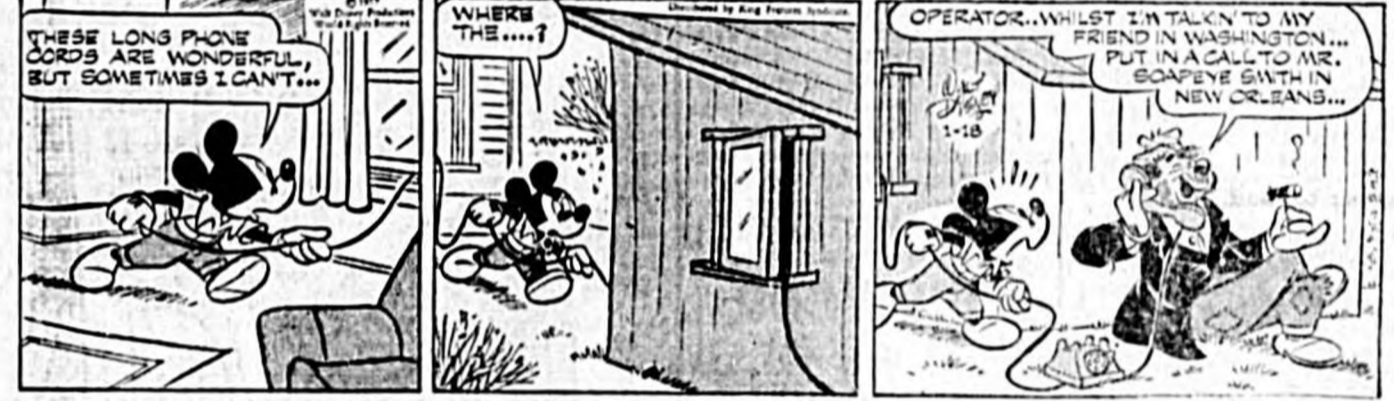
BETTY BAILEY



FLASH GORDON



MICKEY MOUSE



BLONDIE



THE LONG RANGER



GRANDMA



OZARK LIKE



Legal Notice

In the Court of the County Judge, SEMINOLE County, Florida...

To All Creditors and Persons Having Claims or Demands Against Said Estate...

NOTICE TO DEFEND TO: A. E. YOWELL, Valdez...

The West 1/4 of the NW 1/4 of the NE 1/4 of Section 11, Township 21 South...

YOU ARE HEREBY NOTICED that the plaintiff herein has instituted a suit against you...

Skelton Funniest On Tuesday's Show Despite Sadness

HOLLYWOOD — Red Skelton mugged his funniest on his television show Tuesday night...

After Red walked off the set, the producer, Cecil Barker, went into the comedian's dressing room...

Only once did Red let the TV audience know of his heartbreak. At the end of the half hour program...

Red has hold of himself now," said Rooney. "He's resolved to pack as much love into these next few months as he can for the boy."

Rooney was her Skelton going through a routine on the stage while the audience howled...

WITNESS the hand of the Clerk of the Clerk of the Circuit Court, Seminole County, Florida...

NOTICE I will not be responsible for debts made by anyone other than myself.

DAILY CROSSWORD

- ACROSS 1. Artificial waterway 2. Work hard (mus.) 3. Betel palm 4. Not generally 5. Very slow (mus.) 6. Not generally 7. Living (Jap.) 8. Morset of food 9. Across 10. Anarchists 11. Regret (Baby) 12. Undivided 13. Door joint 14. Current of air 15. Location of Taj Mahal 16. Twilled fabric 17. Super-natural object (Am. Ind.) 18. Festival (Jap.) 19. Writing fluid 20. Co-quetted 21. Eskimo tool 22. Untruffed 23. Current of air 24. Location of Taj Mahal 25. Twilled fabric



Yesterday's Answer 25. American educator 26. Untruffed 27. Sloping 28. Man's name (poes.) 29. Snake

- DOWN 1. Caution 2. Inland sea (Asia) 3. Head support 4. One-spot 5. Very slow (mus.) 6. Not generally 7. Living (Jap.) 8. Morset of food 9. Across 10. Anarchists 11. Regret (Baby) 12. Undivided 13. Door joint 14. Current of air 15. Location of Taj Mahal 16. Twilled fabric 17. Super-natural object (Am. Ind.) 18. Festival (Jap.) 19. Writing fluid 20. Co-quetted 21. Eskimo tool 22. Untruffed 23. Current of air 24. Location of Taj Mahal 25. Twilled fabric

writing and shall state the place of residence and post office address of the claimant...

As administrator of the Estate of Margaret E. Haines...

FAUST'S DRUG STORE Near P. O. Phone 103. Our experienced pharmacists will accurately fill your prescriptions... FAUST'S SUNDRY STORE "To Better Serve You" 20th & French Ave.

Studebaker-Packard CORPORATION Where pride of Workmanship comes first! Command performance for safety—the Studebaker Golden Hawk puts you in command with a built-in supercharger for extra power the instant you need it... SANFORD MOTOR CO. Inc. 1001 S. SANFORD AVE. PHONE 1570

Additional Society Calendar

FRIDAY
At 7 p. m. the Associational Music Festival will be held at the First Baptist Church in DeLand.

SUNDAY
The Junior choir of the First Baptist Church will rehearse at 8:30 p. m.
At 8:30 p. m. there will be an Intermediate Fellowship in the recreational room at the First Baptist Church. This concludes at 8:30.

MONDAY
The Dependable Class of the First Methodist Church will gather at the home of Mrs. J. H. Nicholson, Briarcliffe Ave. at 8 p. m. for its regular monthly business and social meeting.
The Junior Choir will have their rehearsal and fellowship at the First Presbyterian Church at 3:45 p. m.
The Youth Choir of the First Presbyterian Church will practice at the Church at 7:30 p. m.
The Intermediate Choir of the First Baptist Church will rehearse at 7 p. m. and the Adult choir at 8.
The Ladies Aid of the Lutheran Church of the Redeemer will meet at 7:30 p. m. at the church. Installation of officers will be held.
At 8 p. m. the Assn. Sunday School meeting will be held at the First Baptist Church in DeLand.
The Boy Scouts of the First Presbyterian Church will meet in the Scout Room at 7 p. m.
The Women of the First Presbyterian Church will have their Prayer Band at 2:45 p. m. in the Philaena Class Room, followed by the Business and Inspirational Meeting at 3 p. m. Nursery will be provided for this business meeting.
The Brownies Bible Class of the First Presbyterian Church will have a spaghetti dinner in the Educational Building at 6:41 p. m. Adults only.
The Past Matrons Club of Seminole Chapter No. 2 Order of the Eastern Star, will hold its regular January meeting in the Masonic Hall at 6:30 p. m. A covered dish supper will be held to which all patrons are invited.

TUESDAY
The Brotherhood of the First Baptist Church will have its monthly supper and program at 7 p. m.
The Frances Horton Circle of the First Baptist Church will meet at the home of Mrs. June Berwechin, 1020 Palmto Ave. at 7:30 p. m.
The UDC meeting will be held at Seminole High School at 8:45 p. m. Guest speaker is Guy Strickland, who will talk on Robert E. Lee.
The Brownie Scouts of the First Presbyterian Church will meet in the Youth Building at 3 p. m.
The Pioneer Fellowship and Recreation of the First Presbyterian Church will meet in the Youth Building from 8 p. m. through 8 p. m.
The men of the First Presbyterian Church will have their monthly meeting at 7 p. m. in the Educational Building Comdr. L. B. Libbey will be the speaker.
The Gleaners Class of the First Presbyterian Church will have a party at the home of Mrs. Jay Beck, 410 Magnolia Ave., at 3:30 p. m. Co-hostess will be Mrs. Mabel Brown. All members are invited.
The Gleaners Class of the First Presbyterian Church Sunday School will meet at 3:30 at the home of Mrs. Jay Beck, at 410 Magnolia Ave., for tea and a social meeting.
The Ware Bible Class of the First Methodist Church will hold a covered dish supper at 7 p. m. at McKinley Hall. Hosts for the event are Mrs. C. E. Williams, J. L. Crawford, Mrs. W. A. Hunter, Mrs. and Mrs. Sebeuman and Mrs. R. T. Warren.
The Past Noble Grands Club

of Seminola Rebekah Lodge will meet with Mrs. Mary Jameson, 609 Palmto Ave., at 8 p. m. Mrs. Athow will be co-hostess.
The Band Parents Assn. will meet at 8 p. m. in the SHS band hall.
The Anna Miller Circle will meet at 8 p. m. at the Elks Club. Installation will be held and all members are urged to be present.
WEDNESDAY
Prayer Meeting will be held at the First Baptist Church at 7:30 p. m. At 8:15 the Sunday School Cabinet will meet.
The Girl Scouts of the First Presbyterian Church will meet at 3:30 p. m. at the Church.
The Senior High Fellowship Recreation of the First Presbyterian Church will meet at the Church at 7 p. m.
The Mid-Week Bible Hour will be conducted by the Rev. A. G. McInnis, Pastor of the First Presbyterian Church at 7:30 p. m.
The Chancel Choir will rehearse at First Presbyterian Church at 7:30 p. m.
The Fine Arts Department of the Sanford Woman's Club will hold its meeting at the club at 3 p. m. The annual Animated Magazine will be given and a "good" program is planned. The public is invited.
THURSDAY
The Junior Choir will have its rehearsal and fellowship at the First Presbyterian Church at 3:45 p. m.

SCTFU Elects Officers For '37

The Seminole County Teachers Federal Credit Union, composed of 135 members, convened at Seminole High School Wednesday at 4 p. m. for its annual meeting.

Routine business was conducted by Mrs. Jack Burney, president. Committee reports were given by Mrs. Burney for the board of directors; treasurer's report, Miss Rebecca Stevens; credit committee, Mrs. Samuel; supervisor's report, Mrs. Mae Fort; education report, Mrs. Ruth Carlton.

The following were elected as officers to serve for 1937; board of directors composed of Mrs. Burney, president; Miss Rebecca Stevens, secretary-treasurer; Mrs. Ruth Carlton, Miss Catherine Ball and Mrs. Betty Brown; credit committee, Mrs. Joyce Bateman, Mrs. Cherry Hyman and A. J. Bracken; supervisory committee, Mrs. Mae Fort and Miss Ethel Riser.

It was reported that the earnings for the year permitted a four per cent dividend. "We are happy to have had such a prosperous year," a spokesman said.

Additional Church News

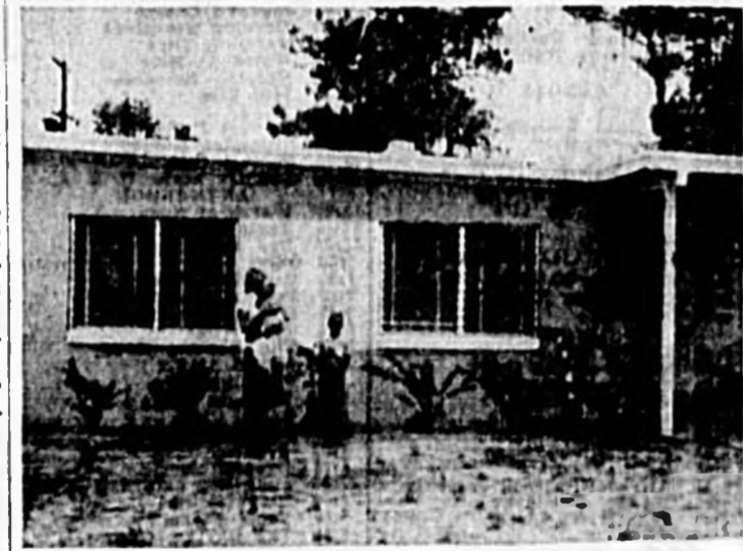
FIRST PRESBYTERIAN CHURCH
Oak Ave. and Third St.
The Rev. A. G. McInnis, Minister
Mrs. George Touhy, Organist and Choir Director
Miss Katherine Brown, D. C. E.
8:45 a. m. MORNING WORSHIP
Solo — "Thanks Be to God"
Dickson—Patty Johnson
Sermon "The Light of Life"—Mr. McInnis
9:45 a. m. Sunday School
10:50 a. m. Session meal for prayer in the Session Room.
11 a. m. MORNING WORSHIP
Anthem "O Lord of Life, to Thee We Lift Our Hearts", Forest Green.
Anthem "Hark! Hark, My Soul", Shelley — Chancel Choir, with solos by Mrs. Charles Wilke, Mrs. Rudy Sloan.
Sermon "The Light of Life"—Mr. McInnis
Nurses for children under six during the Worship Hours—8:45 a. m. and 11 a. m.
7:30 a. m. EVENING WORSHIP
Sermon Mr. McInnis.



PHOTOGRAPHERS MATE SECOND CLASS, and Mrs. Clifford Williams, and daughter Cathy, enjoy television in their home at 303 East 26th St., in Sanford. (Official U. S. Navy Photo)



HOMER OGLES, Photographers Mate First Class, USN, and family, enjoying a ride on Lake Monroe, in their 16-foot runabout. (Official U. S. Navy Photo)



MRS. GLADYS CARTER, wife of Photographers Mate Second Class Lindel Carter, and children, Alan, and Linda, are seen in front of their home at 821 Rosalia Drive, in Sanford. (Official US Navy Photo)

JOIN THE MARCH OF DIMES

Navy Photographers, Families Call Sanford 'Home'

During a 20 year cruise, the average navyman expects a change in duty assignments from seven to 12 times and on each occasion the assignment to come appears better than the assignment past — that is almost each time for there are many navymen, four in particular, who consider Sanford the best assignment yet.

Chief Photographers Mate, William O. Shepard, Photographers Mate, 1st Class, Homer C. Ogles, Jr., and Photographers Mates, 2nd Class, Clifford W. Williams, and Lindel L. Carter, like all servicemen, have many things in common some of which are: All are married, all have children, all have purchased homes in Sanford, and all would like to spend the remainder of their twenty years here.

Chief and Mrs. Shepard and their three children, Paula eight, William ix, and James J, reside in South Pinecrest where Paula and William attend the South Pinecrest school, and Mr. Shepard is active in the P. T. A. Chief Shepard is an ardent fisherman and thoroughly enjoys the wonderful fishing in the Sanford and central Florida areas.

Homer and Lillian Ogles, like the Shepards, also purchased a home in South Pinecrest. They and their two children, Donna

Lake Mary

By VIRGINIA ANDERSON

Saturday afternoon, the boys of the Lake Mary Cub Scout Troop were given a treat by their Den Mother, Mrs. W. Hopkins, as a reward for winning the honor flag and for the hard work they had put into their achievement activities. This consisted of a train ride from Sanford to Winter Park, where Mrs. Hopkins and Mrs. John Leach picked them up and returned them, by automobile to their homes. Accompanying the boys on the train trip was Mrs. Eugene Seaman and her son, David, who is mascot of the troop. Cubs enjoying this outing were Dannie Nettles, David Scott, Robert Hopkins, Ronny Herring, John Ed Leach, Larry Chester and Steve Willis.

Mr. and Mrs. Allen Graham, relatives of the Frisbys, arrived last week to spend the winter in their home on Eighth St. During the summer, Mr. Graham was quite ill and the Florida sunshine has been prescribed in place of Michigan's chill.

Mr. and Mrs. E. C. Thompson, former Lake Mary winter visitors, spent the weekend with their friends, Mr. and Mrs. T. E. Spira. They are now living in Eau Gallie.

Attending the Seminole Neighborhood Association of Girl Scouts, held in the Episcopal Parish House, Monday evening were Mrs. Leon Taylor, Mrs. F. H. Dunlap, Mrs. Morris Steiner, Mrs. P. D. Anderson and Mr. and Mrs. Karl Toney.

Wednesday, Jan. 9, the Business Women's Circle of the Community Presbyterian Church held its monthly meeting at the home of Mrs. Joe Smathers on Lake Emma, with the president, Mrs. Walter I. Piper presiding. Devotion consisted of the Lord's Prayer said in unison. Following the reading and approval of the minutes of the previous meeting, the treasurer's report was accepted, showing an overall balance of \$162.72. Mrs. S. P. Fowler, chairman of the Christmas project reported purchase of a dress and shoes and their presentation to a worthy young woman. The group is hoping that they may help this

AUTO LOANS
Lowest Cost

SANFORD
ATLANTIC NATIONAL BANK

INITIALMENT LOAN DEPT.
Member FDIC

— DONT —

Throw Away Your Tire Dollars Because Your Tires Are Smooth. Let WELSH TIRE SHOP 105 W. 2nd Put On New Truck Rubber Treads That Will Give Guaranteed NEW TIRE Wear And Save You Money.

WELSH TIRE SHOP 105 W. 2nd

36 Years in Sanford

Pre-Opening Offer!

CHOICE LOCATIONS AT
AVON PARK LAKES
CREATED BY THE
AVON PARK CHAMBER OF COMMERCE

For the Full Price of
ONLY

NO LESS THAN 2
NO MORE THAN 5
TO A PURCHASER

\$ 300 PER LOT

**\$25 DOWN
\$5 PER MONTH**

ALL LOTS THE SAME PRICE

The Avon Park Chamber of Commerce is making this offer to acquaint more people with the lake regions and to bring more families into this area. Avon Park Lakes is only 3 miles from Avon Park and should become one of Avon Park's fine residential suburbs.

Lake Privileges for Bathing, Boating and Fishing
FREE to all Property Owners of Avon Park Lakes

Avon Park Lakes will be advertised in out-of-state newspapers but NOW before such advertising starts, this fine property is offered to the people of our state . . . to give them the chance to select the BEST locations while they are available. Select lots close to the lake at this low price, but don't wait or you may miss this great opportunity.

Free Deed . . . Free Title Insurance . . . Exchange Privilege

MAIL COUPON TODAY!

Avon Park CHAMBER OF COMMERCE
Avon Park, Florida

Please send me the descriptive folder explaining this offer. It is understood that this is only an inquiry and does not obligate me in any way.

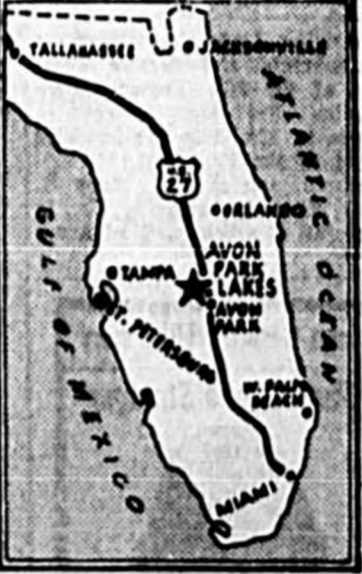
Name _____
Address _____
City _____ Zone _____ State _____

Print Name and Address Clearly

DRIVE OVER Today!

Avon Park Lakes is located 3 miles north of the junction of Avon Park's Main Street, and U. S. Route 27

Avon Park CHAMBER OF COMMERCE
Organized 1925
AVON PARK, FLORIDA
"ON THE ORANGE BLOSSOM TRAIL"



For '37...
the accent's on
OLDS!

See how little it costs to own a Golden Rocket 88!

— COME IN! YOU'RE ALWAYS WELCOME AT —
HOLLER MOTOR SALES
C. 2nd & Palmto Phone 1234

SAVE Dollars at HOLLERS

C-A-D-I-L-L-A-C-S-
ALL ONE OWNER NEW
CAR TRADE INS—THIS WEEKEND
ONLY AT TERRIFIC SAVINGS

56	62—4-Dr. Sedan, One Owner Fully Equipped — 11,000 Actual Miles	\$4395
55	62—4-Dr. Sedan — One Owner— Another Fully Equipped Low Mileage Car.	\$3595
54	62—4-Dr. Sedan—19,000 Actual Miles — One Owner— Really Nice	\$2795
53	60—Special Fleetwood 4 Dr. Sedan—Fully Equipped—Beautiful Cobalt Blue	\$2195
53	62—4-Dr. Sedan— Another One Owner—Low Mileage Car	\$1895
46	4 Door Sedan—It's 11-Years-Old	\$195

USE OUR LOW COST GMAC PLAN

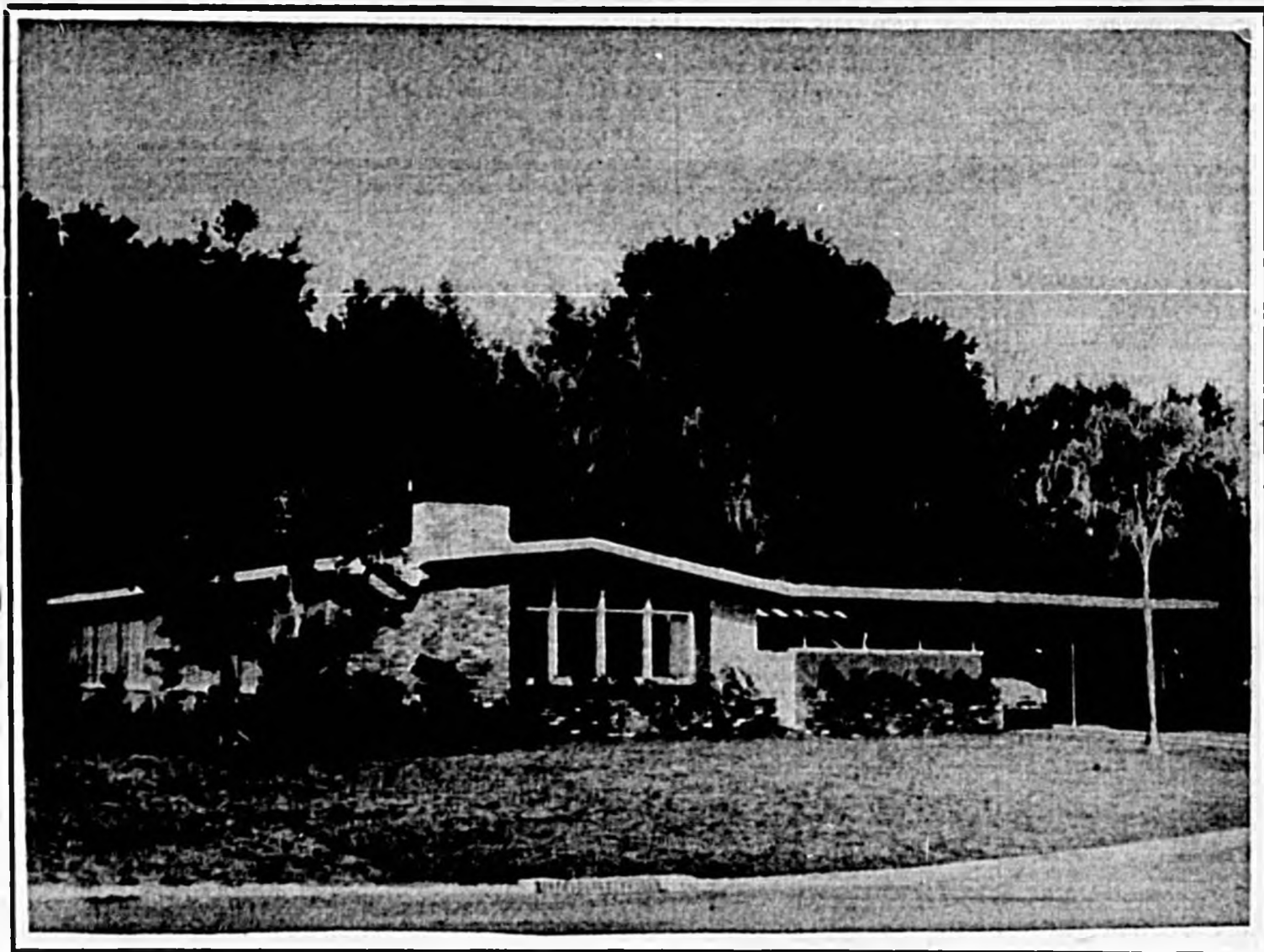
Holler Motor Sales
2nd & Palmto Phone 1234



have you seen

Grove Manor?

This you must see now....
Grove Manor homes are really
Something special!



This is the beautiful home of Mr. and Mrs. E. R. Horrell in Grove Manor.

Select one
of these
easy finance
plans: F.H.A.
or In Service
Loan F.H.A.

Located in one of Sanford's nicer sections Of town . . . Close to Schools, Movies, Churches and down town Sanford. Situated in a park-like custom subdivision . . . The homes are planned to fulfill your every wish for convenience and luxury,

Grove Manor is truly a haven for discerning people who appreciate the best . . . people who want to live in a restricted suburban district of fine homes . . . surrounded with congenial atmosphere!

Drive out today and select your colorschemes inside & out. Convenient easy finance plans make it possible for you to own a Grove Manor home . . . we can qualify you for one of our finance plans within 30 minutes.

*Grove Manor Homes Are Priced
From \$16,500. to \$25,000.*



Odham & Tudor, Inc.

"Builders of finer homes"

Brailey Odham Pres.

Corner Hi-Way 17-92 & 27th Street

Phones 2100 - 2198

