

# Eddie's Bakery Finishes Unbeaten

**BIDDY LEAGUE**  
Eddie's Bakery 27  
Sanford Atlantic Bank 26  
Eddie's Bakery won both halves of the season schedule going undefeated. Tom Hingworth had 24 points, Mary Foster 20, Terry Smith and Doug Peckard four each. For Sanford Atlantic Bank, Donnie Williams had 16, Nicky Merz six, Rocky Jernigan four.

**Sanford Electric 53**  
George's 34  
It was Andrew Bonington again for Sanford Electric with 34 points, Bobby Rape had eight, Mike Mullen six. For George's, Jimmy Rosemond had 17, Robert Andrews seven, Curtis

# Goulet Pinned By Cradle In Wrestling Main Event

In other wrestling action last night at the Milo Steinborn sponsored event, Terry Tyler used a body press to pin Ceylan Negro while the Great Staleno defeated Dewey Robinson with a submission backbreaker.

The two masked teams of the Medics and the Inferno also met last night in a tag team event. One of the Medics used a miter followed by a body press to win the match.

Also in tag team action Danny Miller used a body press to pin the Super Inferno. Miller was teamed up with El Gran Loharie for the clash with Mike Herold paired with the Super Inferno for the meeting.

In the opening wrestling match Les Thatcher forced Cisco Grimaldo into submission with a body press while Thatcher's teammate Ronnie Fuller looked helpless on Grimaldo was teamed with Ronnie Garvin for the clash.

ORLANDO — Jack Brisco used a rolling back cradle to pin Rene Goulet in the main tag team event last night at the Orlando Sports Stadium. Goulet teamed up with Dory Funk Jr. with Brisco paired with Louie Tillet.

During the match Brisco kept after Funk to such an extent that Funk left the ring to avoid his bruising forearm smashes. Although Funk and Goulet were paired for the event they refused to tag with each other several times during the match. Funk backed away from Goulet's attempted tag several times with Goulet giving Funk the same treatment.

Their apparent animosity may make for a match between the two some time in the near future. A matchup between Brisco and Funk is also a definite possibility. Last summer the two met at the Sports Stadium and drew 6,748 fans, the largest wrestling crowd ever.

In other wrestling action last night at the Milo Steinborn sponsored event, Terry Tyler used a body press to pin Ceylan Negro while the Great Staleno defeated Dewey Robinson with a submission backbreaker.

**ABC LIQUOR SALE**

SAVE 40% OFF ALL LIQUOR

OLD CROW 4 YR. 3.99  
WOLFSCHEIDT VODKA 3.99  
SCOTCH WHISKY 5.99  
HAIG PINCH 12 YR. 3.21  
ROYAL SCOTCH 3.99  
KILTY CASTLE 4.75  
WINDSOR CANADIAN 4.75  
CANADIAN BLEND 4.75  
SCHEIDT'S BLEND 4.75  
SHERIDAN BLEND 4.75  
LONDON TOWER 4.75  
MAGNUM 4.98  
CLICQUOT 4.98  
ROYAL SCOTCH 4.98  
KILTY CASTLE 4.98  
WINDSOR CANADIAN 4.98  
CANADIAN BLEND 4.98  
SCHEIDT'S BLEND 4.98  
SHERIDAN BLEND 4.98  
LONDON TOWER 4.98  
MAGNUM 4.98  
CLICQUOT 4.98

**WEDNESDAY HEADLINES**

Inside THE HERALD

World News

Around The Nation

Sports World Thrillers

Statewide Developments

**ABC LIQUOR SALE**

SAVE 40% OFF ALL LIQUOR

OLD CROW 4 YR. 3.99  
WOLFSCHEIDT VODKA 3.99  
SCOTCH WHISKY 5.99  
HAIG PINCH 12 YR. 3.21  
ROYAL SCOTCH 3.99  
KILTY CASTLE 4.75  
WINDSOR CANADIAN 4.75  
CANADIAN BLEND 4.75  
SCHEIDT'S BLEND 4.75  
SHERIDAN BLEND 4.75  
LONDON TOWER 4.75  
MAGNUM 4.98  
CLICQUOT 4.98  
ROYAL SCOTCH 4.98  
KILTY CASTLE 4.98  
WINDSOR CANADIAN 4.98  
CANADIAN BLEND 4.98  
SCHEIDT'S BLEND 4.98  
SHERIDAN BLEND 4.98  
LONDON TOWER 4.98  
MAGNUM 4.98  
CLICQUOT 4.98

**The Sanford Herald**

Wednesday, February 10, 1971 - Sanford, Florida 32711  
63rd Year, No. 117 Price 10 Cents

# Future Of SR 46 Now Is Uncertain

The uncertain future of planned renovations to SR 46 west by the State Department of Transportation (DOT) due to reported remarks by two of the five Seminole County commissioners has caused the Greater Sanford Chamber of Commerce long range planning committee to become involved.

This was disclosed Tuesday to The Herald by Douglas Stenstrom, planning committee chairman, who stated he would call his group into session to ascertain the situation.

Stenstrom reacted to word that County Commission Chairman Greg Drummond and Commission novice John Kimbrough had indicated having some reservations over county purchasing four-lane rights-of-way to permit the renovation of two traffic lanes by the DOT at state expense.

"It is determined that the commission is serious in backing down on resolutions endorsed through the years by preceding county commissions, then I will ask to be heard by that body," Stenstrom added.

Kimbrough has been quoted as saying he would not be bound by the mistakes of previous commissions when reviewing the resolution to be brought before the Commission later for approval of the paving project.

Drummond is reportedly against the acquiring of four-lane rights-of-way, stating "we have more important projects."

E. J. Benedict, Deland district DOT engineer, said he decided not to purchase the four lanes property would delay and seriously hamper the entire project.

Sanford City Commission discussed the situation at Monday's regular session and appointed Mayor Lee P. Moore to discuss the matter with Chairman Drummond.

**AROUND THE CLOCK**

By JOHN A. SPOLSKI

Add this one to "I hate to see my leave" department... Lynn Lyon — Police Chief of North Orlando. He'll be going to an area about 800 miles from here, effective Feb. 18, at an increase in salary of \$350 monthly. A very dedicated individual who'll be hard to replace.

One of his men Ed Smart, Jr. submitted his resignation from the force, effective also on Feb. 18.

Quite honestly... for one man to put in 572 hours a month on the job is just a little "much," eh?

**WEDNESDAY HEADLINES**

Inside THE HERALD

World News

Around The Nation

Sports World Thrillers

Statewide Developments

**WEDNESDAY HEADLINES**

Inside THE HERALD

World News

Around The Nation

Sports World Thrillers

Statewide Developments

# More Instructors Are Needed Teachers' Pay Hike Delayed

Seminole County School Board Tuesday delayed for two weeks a request from the Seminole Education Association (SEA) teacher salary committee to grant a four-per-cent wage hike to 475 teachers on continuing contracts effective with the March pay period and letting for four remaining school months.

William (Bud) Layer, Milwee Middle School principal, represented the teachers and outlined the salary proposal to the board.

He explained that after looking over the school budget for this year money was found to grant the raise since it would require \$55,000 from local sources to add to the \$85,000 expected to come from the state.

Supt. John Angel said the local funds sought by Layer was allotted for hiring additional teachers and A. F. Keith, board chairman, asked Layer if benefits would occur by using the money to hire more teachers now.

Layer said "at this time of the year I would say 'no,'" and he further questioned the quality of a teacher that would be available this late in the school year.

Angel said there is a possibility that the county would not receive the \$85,000 from the state; further implied there would not be enough money available for the increase to stay in effect for the 1971-72 school year, and suggested the proposal be delayed.

Layer replied, "If the teachers see that the money is not forthcoming from the state, then the teachers will not press for it next year."

Dr. Stuart Colpepper, board member, told Layer the quality of a teacher that would be available this late in the school year is a possibility that the county would not receive the \$85,000 from the state; further implied there would not be enough money available for the increase to stay in effect for the 1971-72 school year, and suggested the proposal be delayed.

Layer replied, "If the teachers see that the money is not forthcoming from the state, then the teachers will not press for it next year."

Dr. Stuart Colpepper, board member, told Layer the quality of a teacher that would be available this late in the school year is a possibility that the county would not receive the \$85,000 from the state; further implied there would not be enough money available for the increase to stay in effect for the 1971-72 school year, and suggested the proposal be delayed.



CLARENCE ZUELCH captures the "save-the-200" theme in paint on the protective fence along the courthouse site. Mr. and Mrs. Zuelch, retiring from Bainbridge, Ohio, are residing with their son, Fred Good, 106 Orange Drive, Lech Arbor, until they establish their own home here.

# Schools Approve Mill Tax Hike

Seminole County School Board at Tuesday's meeting approved the selling of \$5,000,000 in anticipation notes to Florida State Bank along with the rest of the \$12 million left in the \$10.3 million bond issue approved by referendum in 1968.

The latest sale will provide additional money to purchase property and fund the new Lake Branley High School to be constructed in South Seminole.

SAIGON — Two thousand more South Vietnamese troops cross into Laos aboard American and South Vietnamese helicopters. (Page 2A)

From Aboard USS New Orleans — Apollo 14's moon heaver, healthy and snug in a quarantine trailer, steam towed Samoa after the third U.S. lunar exploratory mission. (Pg. 2A)

And then on Saturday, Feb. 20, the Florida State Music Department will be conducting the "Back-Back And All That Jazz." It's for free...

# Swofford Lashes At County

By LARRY NEELY  
ALTAMONTE SPRINGS — Mayor Lawrence Swofford lashed out at the Seminole County Commission and Commission Chairman Greg Drummond in particular yesterday afternoon at a special session of the City Council. Swofford said, "If they are going to pay him (Drummond) \$14,000 a year, they better send him to school."

Swofford's comments were made in reference to a letter from the County Commission to the city informing it of a meeting concerning annexation at Lyman High School. City Supt. Dan Bundy started to read the letter into the minutes but stopped when he reached portion of the letter that stated the City of Altamonte Springs (Continued on Page 2A, Col. 8)

# Sewage Disposal Question Debated

By GLENDA BRADFORD  
MAITLAND — How does a city furnish sewage service to all the people in its committed area when its treatment plant has a capacity of 600,000 gallons a day and it is presently pumping 1 million gallons a day with a projection of rapidly increasing loads?

The answer for Maitland, the City of question, may be to connect with the new Altamonte Springs treatment plant. This was the topic of discussion between the officials of both cities in a meeting held at Maitland Civic Center.

The problem as outlined by Mayor Homer Hough, of Maitland, is that when the Maitland plant was constructed in 1962 it was adequate. But as the area the plant encompassed grew at an astounding rate, the plant became unable to provide adequate service.

In addition to the City of Maitland, the plant services portions of South Seminole County, including English Estates, Indian Hills, parts of Dunwoody, and the K-Mart area. It was pointed out by Maitland officials that this portion of Seminole County makes up 40 per cent of the total size of the plant or 60,000 gallons a day. This is almost precisely the amount of overload of the Maitland facility. Speculation was made as to the feasibility of this area being turned over to the Altamonte plant.

If this was a possible immediate solution, it could only be maintained temporarily. The Altamonte Springs plant will have a surplus capacity of approximately 500,000 gallons for about the first two years of operation. However, at that time the City of Maitland would either have to build a plant capable of handling all its committed areas or it must enlarge the Altamonte Springs facility.

The reason, according to Harold Radcliff, Altamonte Springs consulting engineer, for termination of service to Maitland at that time is that Altamonte is a "filler" plant. (Continued on Page 2A, Col. 8)

**ONE STOP SHOP FOR PRE-FINISHED PANELING**

Choice of 15 Finishes \$2.99 up

Matching Pre-Finished Mouldings

**GREGORY LUMBER**

Telephone 322-0500

MASTER CHARGE 520 S. Maple Ave. Sanford



Editorial Comment

Laos Invasion: A 'No End' Implication!

If, as is authoritatively reported from Washington, the invasion of Laos has been accepted with an air of "I told you so" familiarity among the doves and muted shrieks by the hawks, this does not lessen the gravity of the implications of this gamble.

South Vietnamese ground forces could well find themselves "bogged down" in Laos with a lengthy campaign forced by the stubborn resistance of the enemy.

This, of course, is what the Nixon move to extend the Cambodian theory of cutting Communist strength in bordering nations to speed U.S. withdrawal must avoid.

But it is not the military viewpoint which is paramount. It is the civilian, the public, the mothers and fathers of sons still being drafted, the young men themselves which needs attention.

Space Program

Vice President Spiro T. Agnew has pledged that the United States space program will not stop at the moon, with Apollo 14 but "press forward into the reaches of interplanetary space."

But what Agnew calls "discouraging occurrences," sharp cutbacks in the space budget, pose a seemingly insurmountable contradiction.

Opposition to space exploration has been most noticeable on college campuses, where there is frequent references to "misplaced priorities" and the need to put more money into the problems of poverty, race relations and the environment.

Congress has reflected the campus disenchantment by withholding money for financing since the U.S. landed a man on the moon less than two years ago.

A veteran astronaut, James A. Lovell, reconciles the contradictory views.

Lovell, who now heads an advanced planning group in the space program, sees the big challenge today as learning how to operate in space economically.

He believes that space projects, such as a space station and shuttle system, can be completed without a big drain on government expenditures.

"... We can do it, just as we've made other breakthroughs," he said.

We believe Lovell is right. The technology that put men on the moon is a refinement of the technology that put a car — or two — in every garage.

And, as Lovell points out, it's a technology that creates new jobs and eases the economic pain. In brief, it put more into the economic cycle than it takes out.

The Vice President, as chairman of the President's Space Council, insisted that "our dedication to the space program remain undiminished."

That undiminished dedication must be harnessed within the limitations of a restricted budget "to press forward," in Agnew's words, "for what needs to be done..."

The Sanford Herald
Telephone 322-2611
300 N. French Ave.
WALTER A. GIBLOW, EDITOR AND PUBLISHER
FRANK VOLTOLINE, Circulation General Manager
JOHN A. SPOLSKI, Assistant Editor
FRED VAN PELL, Managing Editor
JANE CASSELLBERY, County Editor
GARY TAYLOR, Sports Editor
DORIS WILLIAMS, Society Editor
BILL VINCENT, Jr., Staff Photographer
CHARLES HAYS, Mechanical Suppl.

THE BIG GAMBLE



Hal Boyle Says:

Looking Back Has Its Points
By HAL BOYLE
NEW YORK (AP) — One should not live in the past, we are told.

Don Graff Says:

More Than Tuna
By DON GRAFF, NEA Editorialist
The American "tuna war" with Ecuador might be of interest to all our yesterdays as those moments which in revery now still make us smile or inspire a tear no longer bitter.

Political Notebook:

Russia Lagging On MIRV

By BRUCE RUSSAT, NEA Washington Correspondent
WASHINGTON (NEA) — Arms experts say flatly the Soviet Union does not yet have any nuclear missiles with multiple warheads capable of being fired in a variety of targets to confuse and flood the defenses.

But Scoville adds that the Soviets have done no testing in the field. Other MIRVs or MIRV's for their Polaris-type submarines bearing nuclear missiles fired from beneath the ocean surface.

Washington Window

So The U.S. - Soviets Go On

By STEWART HENSLEY, WASHINGTON (UPI) — Despite lengthy negotiations, the United States and Russia are far apart as ever on two critical issues — access to Berlin and limitation of strategic nuclear arms.

BERRY'S WORLD

BERRY'S WORLD
I wouldn't take off my clothes. I'm too old-fashioned and I'm easily shocked.
— Leggie Bergman, on nude invariant.
I've got to feed my kids. Let me keep my job and to hell with the environment.
— Workman at a Florida pulp paper mill, which claims it will have to close down if forced to stop discharging wastes into a nearby river.

Letters To The Editor

State Atty. Speaks Out

Editor, Herald:
I read your editorial comment in the Feb. 1, 1971, edition of The Sanford Herald entitled 'More Sunshine: High School Principals'.

Appreciation

Editor, Herald:
On behalf of the entire student body and staff of Lakeview Middle School, I wish to express my appreciation for the Student Council of Idylwild Elementary School.

Enjoy It

Editor, Herald:
Thank you for letting us come to visit the Sanford Herald. We enjoyed it. There were many interesting things to see.

Cruise Stated

The South Seminole Senior Citizen Club is having a sight-seeing cruise aboard the "Shipper Kr" from Port Canaveral on Sunday, Feb. 21, at 1 p.m.

ABRAHAM LINCOLN OVERPAID HIS INCOME TAX
COMPLETE RETURNS \$5 UP
NOR BLOCK CO.
AMERICA'S LARGEST TAX SERVICE WITH OVER 5000 OFFICES
309 E. FIRST ST.
WEEKDAYS 9 TO 5 - SAT. & SUN. 9 TO 5 - PHONE 322-4771

Court Litigation Threatened

Nixon Asked: Reverse Canal Nod

JACKSONVILLE, Fla. (AP) — The Canal Authority of Florida says it will give President Nixon a chance to withdraw his halt order on the Florida Barge Canal before taking the White House to court.

The President ordered a halt to construction of the nearly 30-year-old project on Jan. 27 after conservationists claimed the canal would cause permanent damage to the ecology of the state and provide little economic benefit.

Voters' Registration Office Removal Urged

QUINCY, Fla. (AP) — Gadsden County Elections Supervisor J. L. Hutchinson says he is demanding that the state remove the voters' registration office from the county courthouse Monday and Tuesday.

Eliminate Ghettos Plea Issued By State Aide

TALLAHASSEE, Fla. (AP) — The State of Florida should build housing in middle class neighborhoods for low income families, says Community Affairs Secretary Athle Range.

High School Principal Escapes Time Bomb

WEST PALM BEACH, Fla. (AP) — A Naval career spanning three wars was good training for his retirement years. Thomas Abbott is now a high school principal and someone rigged a time bomb under his car Tuesday.

Gruise Stated

The South Seminole Senior Citizen Club is having a sight-seeing cruise aboard the "Shipper Kr" from Port Canaveral on Sunday, Feb. 21, at 1 p.m.

Enjoy It

Editor, Herald:
Thank you for letting us come to visit the Sanford Herald. We enjoyed it. There were many interesting things to see.

State News
JACKSONVILLE, Fla. (AP) — For viewers accustomed to former Gov. Claude Kirk's flamboyant television performances, Gov. Reubin Askew's first statewide TV appearance since his inauguration was a distinct change of pace.

'Relaxed' Governor On TV

In a low-key session broadcast from station WXTN in Jacksonville Tuesday night, Askew stayed with his theme of the need for a corporate income tax and told the audience education might suffer unless new state revenues are found.

High School Principal Escapes Time Bomb

WEST PALM BEACH, Fla. (AP) — A Naval career spanning three wars was good training for his retirement years. Thomas Abbott is now a high school principal and someone rigged a time bomb under his car Tuesday.

Gruise Stated

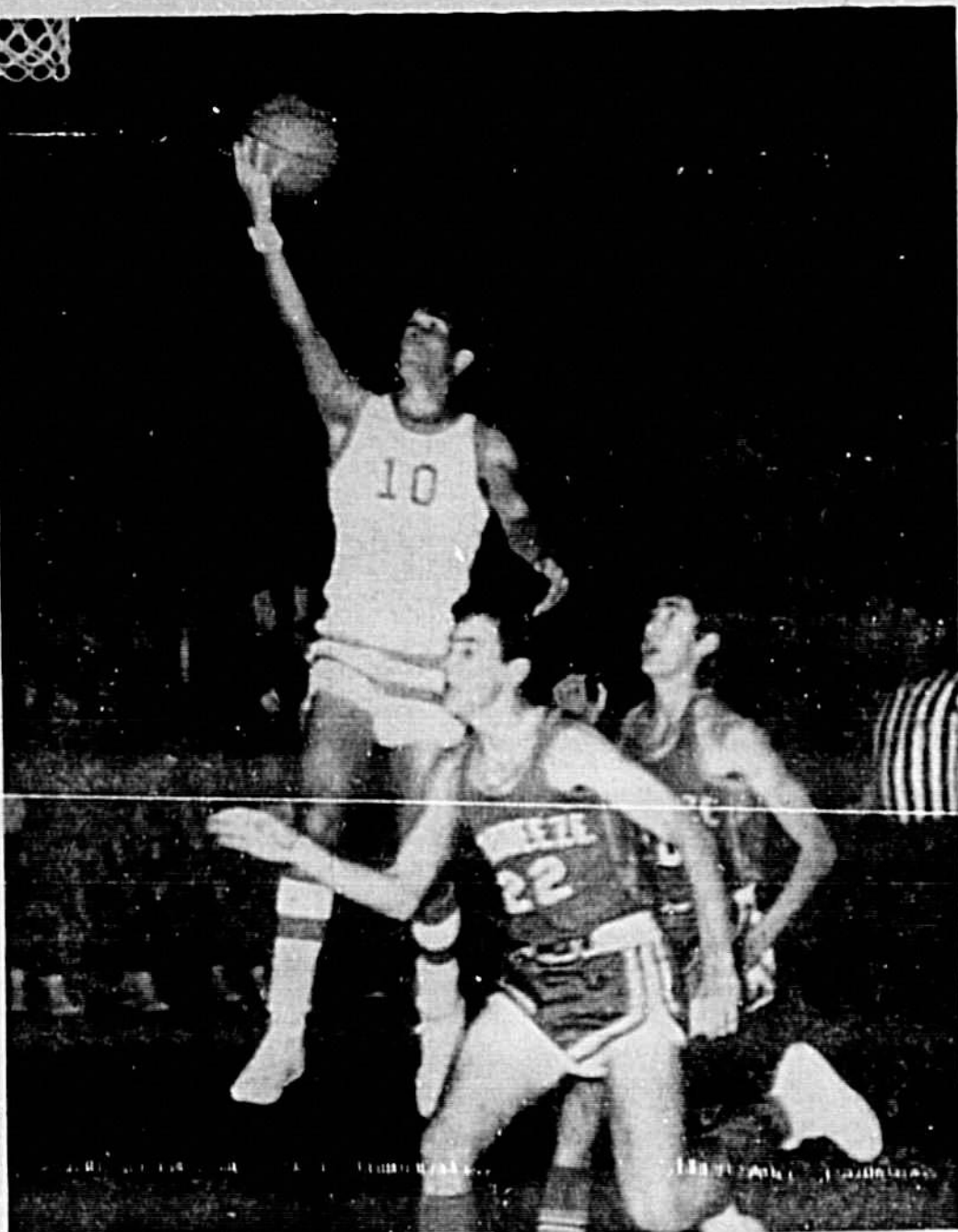
The South Seminole Senior Citizen Club is having a sight-seeing cruise aboard the "Shipper Kr" from Port Canaveral on Sunday, Feb. 21, at 1 p.m.

Enjoy It

Editor, Herald:
Thank you for letting us come to visit the Sanford Herald. We enjoyed it. There were many interesting things to see.

FLORIDA STATE FAIR
Porter Waggoner and the Waggoners PLUS Dolly Parton
All in person in two great shows...
Saturday, Feb. 13th
AT 6:45 AND 10:45 P.M.
YBOR CITY NIGHT PARADE
RIDE TO THE FAIR FREE!
119 MAGNOLIA AVE. STORE ONLY SANFORD PHONE 323-1480





TOMMY BARKS does most of his shooting from the outside, but here he is shown going in under the basket for a lay-up against Seabreeze as he is closely guarded by Wade James. Barks scored 18 points in the game. The Seminoles close out the regular season this Saturday night in Smyrna.

# Seminoles Smash Seabreeze 'Five'

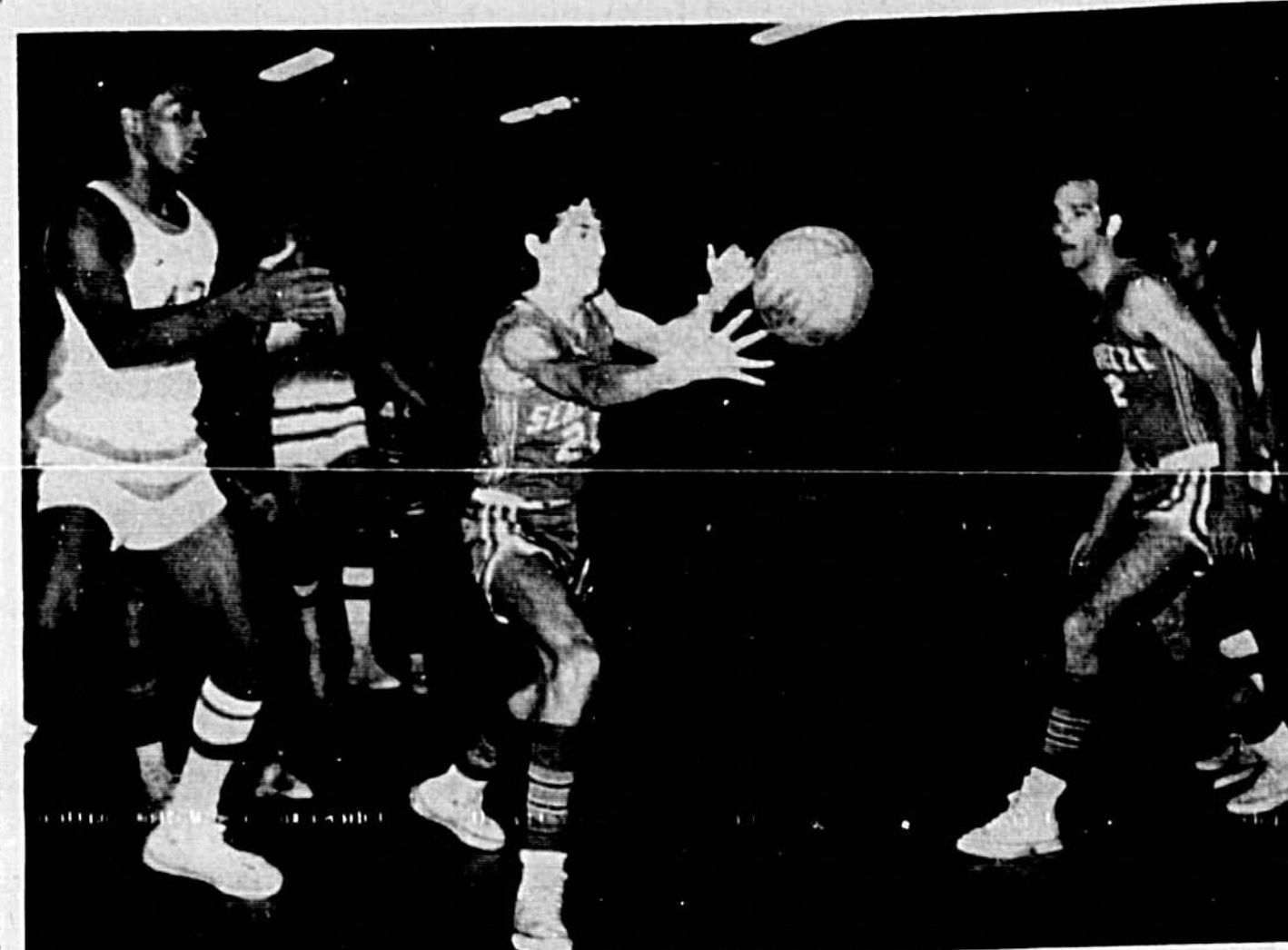
By GARY TAYLOR  
Herald Sports Editor  
The Fighting Seminoles put on the greatest offensive performance of the season last night when they smashed the Seabreeze Sanders 84-62. This was in direct contrast to the first meeting between the teams when the Seminoles lost in overtime.

The Seminoles were paced by the shooting of Clifford Martin. Martin scored 21 points in the first half, and although he sat out much of the final period while substitutes saw action, he ended up with 34 points on the night. 12 rebounds and blocked some eight shots.

Tommy Barks also had a good night as he scored 18 points, including eight in the last period. Ricky Grant was also in double figures with 14, hauling down some 15 rebounds. The Seminoles jumped to an early lead, and held a 15-36 margin going into the final two minutes of play in the initial period. Martin hit for a pair of field goals in the last minute and 15 seconds to put the Seminoles ahead by 19 as they went to the dressing room.

When Ricky Grant hit on a jumper with four seconds left in the second period, it put the Seminoles ahead by 29 as they went to the dressing room. In the third period and entered the final quarter on the heavy side of a 64-38 score.

For the first three and one half minutes of play in the fourth period, there was only one field goal. But the two teams combined to hit on 18-21 at the line during that time. Several players came off the bench to play in the opening minutes of the final period.



PETE AUSTREW of Seabreeze grabs a pass while Clifford Martin (left) guards him. It was Martin's night to shine as he scored 34 points, grabbed 15 rebounds and blocked some eight shots. The Seminoles stopped Seabreeze 84-62. The Seminoles are now 12-10 on the season. (Don Vincent Photo)

# Satchel Paige Named To The Hall Of Fame

NEW YORK (AP) — Satchel Paige took the long, hard way into Baseball's Hall of Fame, but with his rubber arm and unharmed gait, he finally made it.



TOM ELBERSON, of the Seminole Motorcycle Competition Club, is shown with the first place trophy in the 250 cc division he brought back from Deland. Elberson was riding an Ossa in the motocross event over one half mile course. (Gary Taylor Photo)

# In Everglades National Park Drought Threatens Bass

THE EVERGLADES, Fla. (AP) — The airboat roared through narrow channels in the swamps, occasionally skimming over patches of open water where vee-shaped wakes marked the progress of dozens of startled largemouth bass.

"These fish are going to die when the water dries up, but the fishing should be great until then," said Walter Dineen, fisheries biologist for the Central and South Florida Flood Control District.

South Florida is faced with a water shortage that district officials say could produce the worst drought in 20 years, and the bass have fled falling water levels in the interior of the marsh for the deeper waters of sloughs and lakes.

Dineen grounded the airboat against a 10-foot-high wall of sawgrass at the edge of a small slough. The Florida's name for an open pond in the swamps. He cut the engine and stepped into weed-choked water that reached the knees of his rubber waders.

"The drought will slow fish grass dotted with innumerable lakes and sloughs. On a windy day, the yellow-green sawgrass whispers from horizon to horizon, demonstrating vividly why the area also is called the Sea of Grass.

Elberson Takes A 1st Place  
Tom Elberson brought home some first place honors for the newly formed Seminole Motorcycle Competition Club over the weekend as he competed in the races at the Deland Speedway. The event was run over the one half mile motocross course, but the day's activities were shortened to two heats due to the adverse weather.

Elberson was riding an Ossa in the 250 cc category. Johnny Lewis also a member of the Seminole Motorcycle Competition Club, was riding in first place during much of the event, but was forced out due to engine trouble. Lewis was riding a Bultaco.

Butch Russell, riding a Yamaha was fifth in the 125 cc division. Mike Whitley was the only other member of the club entered in competition, but couldn't start due to engine failure.

The club has a meeting room next door to the Seminole Motorcycle Shop, located at the corner of Sanford Avenue and 27th Street. Anyone interested in joining the club may do so by stopping by Seminole Motorcycle Shop.

Members of the club compete at Deland and Orlando, and from time to time will plan home races, to be held in Seminole County.

WHERE'S THE BALL? Where's the ball? This action was captured at Lakeview Middle School during the sixth grade girls volleyball competition. Third period defeated fourth period four straight games to take the title. (Gary Taylor Photo)



NEW HEAD FOOTBALL coach of Florida State University, Larry B. Jones (right) met with members of the press and alumni last night at a Winter Park restaurant. Sportswriters quizzed Jones as to his policies and methods as a grid coach. The new FSU head mentor expressed hope that he would be able to fill the shoes of Bill Peterson who left Florida to take the positions of athletic director and head football coach at Rice University in Texas. After a formal press conference Jones talked informally with sportswriters and alumni. (Larry Neely Photo)

# Ocoee Victimized Lions; Final Thrust Not Enough

By LARRY NEELY  
Herald Sports Writer  
OCOEE — Struggling to turn the season into a successful one, the Ocoee Lions suffered another setback last night as they fell to the Ocala Cardinals 66-58 in an Orange Belt Conference tilt. The loss sets Dave Miller and Charlie Webb's crew back to 10-10 for the season with two remaining home games on tap in the regular season play.

The Lions were unable to stop 6-foot 8 Jackie Ball as he melted the nets for 22 points with teammate Donald Rogers adding an additional 20 points to the Cardinal total. Leading Ocoee's effort was Len Burch who grabbed six field goals and four out of eight from the charity stripe. George Parker, David Tossie and Curtis Car were each added 11 points to the Lion effort.

Ocoee fell behind by five at the end of the initial frame and found themselves down by 10 points at the end of the first half. Ocoee added three more points to their lead by the end of the third period.



JACKIE BALL (right) shoots a shot. Last night Ocoee beat the Lions with 10 points to take the Orange Belt Conference tilt. The Cardinals successfully squashed a fourth quarter comeback effort of Ocoee to top the Lions 66-58 in an Orange Belt Conference clash. (Larry Neely Photo)

# Lyman Remains Winless In Metro

By CHUCK GRILE  
Herald Sports Staff  
A late surge by the Lyman Greyhounds in cage action last night in Winter Park came too late as the host Wildcats tripped the scrappy Hounds 62-55 and sent the Greyhounds to their 14th straight Metro Conference loss without a single victory.

Winter Park began the action with control of the tip off and a quick break. They could establish no margin, however, as the defensive minded Hounds held their ground. Midway through the initial period, Lyman established a four-point margin, and in the latter end of the quarter built up a six-point lead, all being lost before the quarter expired, due to a tremendous effort on the part of the Wildcats.

Winter Park came back quick in the second period to lead 21-19 with 6:30 left, but the Hounds took the edge again, building a slim four point lead, 25-21. Before the half, just as they had done in stonewall games, the Wildcats led 28-27 with 35 seconds left. Then, on a marvelous play by Mike Steward, the Parkers went to the dressing room leading 29-27.

The third period proved to be the most devastating for Lyman, as Winter Park outscored the Lyman 18-10 in the third quarter, though, one Lyman player began to stand out, just as one Winter Park player also did. For Lyman, the double edged scoring of Gary Argo and Eddie Broadway, Argo scored 18 points, while Broadway added another eight. Larry Crews paced the Bullets with six points.

Although Stafford hit his shot in the final half, he shared high scoring honors for Lyman with Paul Crouse, both striking 16. Also providing Lyman with a potent offense were Ray Smith and Steve Nelson, each contributing nine. Winter Park had one lone man, Steward, in double figures at 20, but it proved to be enough to put Lyman from handling the biggest job, a win in the Metro Conference.

# In Oviedo Junior League Lakers Slip By Bullets

The Lakers handed the Bullets their second loss of season downing them 36-22 behind the double edged scoring of Gary Argo and Eddie Broadway, Argo scored 18 points, while Broadway added another eight. Larry Crews paced the Bullets with six points.

SUNS 31 — BUCKS 34  
LAKERS 26 — BULLETS 22  
adding another eight. Larry Crews paced the Bullets with six points.

Behind the torrid scoring of Glennie Patterson, the Hawks remained undefeated in the Oviedo Junior League by swamping the Knicks 42-39. Jim Reeves led the Knicks scoring effort with ten points.

### IT'S IN THE BAG

FOR THE PAST FIVE WEEKS the Lyman High School swimming team has been hard at work. Under the coaching supervision of Skip Foster, the Lyman swimmers are preparing for their first meet to be held Feb. 23, against Ocala Forest in Ocala.

Foster describes this year's general outlook as "much improved from last year." The previous 1970 season marked the initial formation of a Lyman High swim team. Although the team was young and inexperienced last year, the Greyhounds demonstrated fine potential as they notched their first win late in the season. Losing only one senior honor, the swimmers return this year numbering 20 boys and 15 girls. Combining efforts the Hounds will splash in their 1971 campaign with every hope of producing a fine season.

Awaiting the spring opening of Land O' Lakes Country Club, Lyman is presently holding practice sessions at the Crystal Detention Training Center in Orlando. However, the first home meet for the Blue and Gold is not until March 5, when the Hounds take a transfer from New York State. Top performers for the girls' segment of the team will consist of Nancy Culpepper and Nancy Bowler as freestylers; Judy Bowler at the breaststroke and Lori Knight at the butterfly.

All swimmers are anxiously awaiting Feb. 23 when the Lyman Greyhounds will dive into their second year of competitive swimming action.

Those writers must have another, "I'm in good condition... those are the things that count."

All's assistant trainer, Drew "Hundin" Brown, refused to answer questions about his man's poundage. "Heavyweights don't need no special weight," he said. "They just have to be in shape."

Trainer Angelo Dundee, the Fifth Street Gym's proprietor, has prepared Ali throughout his career. He predicts, "He just may be heavier than for any previous fight."

It was a chilly day in Miami Beach. The Drafty Fifth Street Gym was warmed only by heat being pumped from boxing booth being pumped from boxing booth in training.

"Outlet way Joe Frazier gonna beat me," said the defrocked heavyweight champion, "is to knock me out. And he ain't gonna hit the fastest and the heaviest heavyweight in the world."

A black woman, reeved to a pitch, raised her chubby arm and said, "Right on, brother, right on. Posing \$1 a head, are getting larger at the second

# Lyman Tankers Practice

By JIM BRISSE  
Herald Sports Staff  
For the past five weeks the Lyman High School swimming team has been hard at work. Under the coaching supervision of Skip Foster, the Lyman swimmers are preparing for their first meet to be held Feb. 23, against Ocala Forest in Ocala.

# Advance Tickets Available

By ELLA MAY FRAZIER  
DELTONA — Those who plan to attend the Deltona Open this Saturday and Sunday should buy tickets in advance, so they will not be held up at the entrance. Tee-offs will start as early as 7:50 a.m., and nobody wants to miss anything!

# Tournament Schedule Announced

The Intermediate League Tournament starts this Monday, February 15, 1971 at 7 p.m., Seminole High Gym. Schedule for tournament is as follows:

- February 15  
7 p.m. Lions vs. Jets
- 8 p.m. Eagles vs. Rams
- February 16  
7 p.m. Colts vs. winner of Lions vs. Jets game
- 8 p.m. Eagles vs. winner of Jets vs. Rams game
- February 18  
7 p.m. The two winners of Fifth Street Gym's tournament meet at the Championship.

## FENCE SALE

FREE ESTIMATE  
PHONE 831-1525

Orlando 295-0531    Daytona 767-3156

AMERICAN STEEL FENCE COMPANY

PUT IT IN WRITING!



Authorities Keep Wary Eye On Cracked Dam

Ruins Searched For Trapped Victims Of 'Quake

By THE ASSOCIATED PRESS LOS ANGELES (AP) — Authorities kept a wary eye on a cracked reservoir dam and probed wreckage of a ruined hospital for trapped survivors today in the wake of an earthquake that dealt death and destruction to Southern California. Thirty-five deaths were reported, nine of them heart attack victims. More than 850 persons were hurt, some hospitalized.

As water experts began draining it, police ordered a forced evacuation Tuesday night of some 86,000 persons in a 26-square-mile area of the San Fernando Valley which would be reached. Cries of "Help me! Help me!" could be heard.

The initial shock and lesser aftershocks caused damage likely to be reckoned ultimately in the hundreds of millions. Hundreds of commercial buildings and factories were damaged, along with uncounted homes, highways, bridges and public buildings. Los Angeles County estimated loss to its buildings alone of \$125 million, with 47 damaged structurally and 42 evacuated.

Quake At A Glance

By THE ASSOCIATED PRESS Here in brief are facts on the earthquake which hit areas of Southern California on Tuesday: Casualties: 35 deaths reported, more than 850 injured. Damage: Expected to mount into the hundreds of millions of dollars to homes, commercial and public buildings, highways, bridges. Cause: Scientists attribute it to the Soledad Canyon fault in the San Gabriel Mountains, where a vertical slippage was reported. Magnitude: 6.6 on the Richter scale, comparable to the 1933 Long Beach quake which killed 315 persons.

First Hand Report

Robert E. Noel, a custodian at the threatened reservoir dam, was at his home near the base of the structure when the quake hit. "It was thumpin' and jumpin' and knocked everything out of our kitchen," he said. "It didn't matter where I put my feet, the floor wasn't there."

Several major freeways remained closed because of crumpled paving or fallen overpasses. Scientists attributed the tremor to a little known fault that rates as a pipsquack. It is the Soledad Canyon fault in the rugged San Gabriel Mountains. A scientist who visited the scene found signs of vertical slippage — one side of the earth fracture higher than the other — but said he could easily step across the crack in the earth.

Advertisement for Penneys tires featuring a woman and a tire. Text: Penneys has fiber glass belted tires at closeout prices. 36 MONTHS GUARANTEE WITH 14 MONTHS 100% ALLOWANCE.

Advertisement for Echols mattresses. Text: BUY DIRECT FROM FACTORY AND SAVE MATTRESSES—BOX SPRINGS—ANY SIZE WE RENOVATE ALL TYPES BEDDING.

Advertisement for Penneys tires with a large image of a tire. Text: Now 29.00. 36 MONTHS GUARANTEE WITH 14 MONTHS 100% ALLOWANCE.

Advertisement for Penneys vegetable report. Text: FEDERAL-STATE MARKET NEWS SERVICE. SANFORD-DIVISION ZELLWOOD DISTRICT. Cabbage - Offerings moderate.

Advertisement for a stereo system. Text: 39.88. 8 track stereo tape player. Volume, balance and tone controls.

Advertisement for a Golden Pinto car. Text: Sale 13900. Reg. \$159. Golden Pinto CB radio. Solid state circuitry.

Advertisement for Penneys Auto Center. Text: Penneys AUTO CENTER. 8 A.M. to 9 P.M. Monday - Saturday.

Miss Melanie Hurt Bride Of Michael Jeno Paulucci



AN OPEN HOUSE reception Sunday afternoon at the luxurious new Studio of Dance... Miriam Rye, instructor, Debbie Graham, Mrs. Charles Wilke, Robert Graham, Tari Jurs and Valerie Rye Weld, instructor. (Staff Photo)



MRS. MICHAEL JENO PAULUCCI. The bride is the daughter of Mr. and Mrs. Jennings Lavigne Hurt Jr. of Sanford and the bridegroom's parents are Mr. and Mrs. Jeno P. Paulucci of Sanford and Duluth, Minn.

Glittering Formal Gala In Deltona Designed For Charity Benefits

Women's Club Presents First Annual Ball. By ELLA MAY FRAZER DELTONA — Thousands of snowflakes danced in the candlelit ballroom of Deltona's Women's Club recently where approximately 100 dancers attended the first annual Charity Ball.

Jewels Of Liberated Woman Sparked With Pure Color

Advertisement for jewelry featuring images of women wearing various necklaces, earrings, and bracelets. Text: Liberated Jewelry - For a liberated woman, Stanley Hagler, jewelry designer, says purity of color and subtlety in pattern is important.

In Altamonte Springs: New Woman's Club Formed

By GLENDA BRADFORD The Altamonte Springs Civic Club held the monthly meeting Wednesday and had as their guest speaker Rev. Jack Lindsay, Rev. Lindsay is pastor of the First Baptist Church of Longwood and chairman of the Board of the Seminole All Youth Shelter.

Susan Nuckols Elected Club's First President

The youth shelter. The Seminole All Youth Shelter program, according to Rev. Lindsay, has three goals. The first goal was the hiring of a full-time director. Having accomplished this goal the Board is now moving toward the second priority which is the construction of the rehabilitation facility.

Advertisement for Bill Albert, newly appointed director of the proposed Seminole All Youth Shelter. Text: BILL ALBERT, newly appointed director of the proposed Seminole All Youth Shelter, (right) is shown with Mrs. Susan Nuckols, president of the "Woman's Club of Altamonte Springs, and Rev. Jack Lindsay, chairman of the SAYS Board. (Glenda Bradford Photo)

Advertisement for Betty Anne's hair salon. Text: The Staff at Betty Anne's put their Hearts in their Coiffures... Betty Anne's Hair Styling Salon. Open Thurs. Evening by Appointment.

Advertisement for Miss Universe and Stay Warm and Cozy. Text: Miss Universe Is Coming To Sanford Feb. 20. Stay Warm and Cozy with Central Heating.

<b>Jonathan Apples</b> 4 <b>49¢</b>	<b>Apple Sauce</b> 19¢	<b>Yellow-Cling Peaches</b> 3 <b>89¢</b>	<b>Sweet Peas</b> 5 <b>\$1</b>	<b>Cookin' Day Dinners</b> 4 <b>\$1</b>	<b>Homogenized Milk</b> 59¢
--	---------------------------	---	-----------------------------------	--	--------------------------------

**It's PUBLIX for Your Heart's Delight**

WIDE AISLES  
THE FRESHEST PRODUCE  
DELICIOUS DAIRY FOODS  
ELEGANT DELICATESSEN  
S&H GREEN STAMPS  
GOVERNMENT-INSPECTED MEAT

PLentiful Foods  
USDA

- From Our Dairy Dept.**
- Soft Margarine ..... 1 lb. 45¢
  - Regular Margarine ..... 1 lb. 35¢
  - Dinner Rolls ..... 2 doz. 39¢
  - Big-Eye Swiss ..... 6 oz. 59¢
  - Muenster Cheese ..... 1/2 lb. 99¢
  - Cottage Cheese ..... 1 lb. 69¢
  - Cottage Cheese ..... 1/2 lb. 29¢
  - Medium Cheddar ..... 10 oz. 77¢
  - Blue Cheese ..... 4 oz. 39¢

- From Our Frozen Food Dept.**
- Grape Juice ..... 1/2 gal. 39¢
  - Shrimp Cocktail ..... 3 doz. 89¢
  - Meat Pies ..... 10 oz. 49¢
  - Coffee Rich ..... 4 doz. \$1
  - Shoestring Potatoes ..... 1/2 lb. 39¢
  - Baby Limas ..... 1/2 lb. 57¢
  - Frozen Spinach ..... 10 oz. 35¢
  - Fish Sticks ..... 1 lb. 79¢

- Down Produce Lane**
- Grapefruit ..... 8 lb. 69¢
  - Pineapples ..... each 29¢
  - Sweet Potatoes ..... 1 lb. 12¢
  - Western Carrots ..... 2 1-lb. pks. 25¢
  - Cucumbers ..... 3 for 29¢

- Assorted Flavors of Fruit Drinks**
- Hi-C Drinks ..... 3 46-oz. cans \$1
  - Floor Polish ..... 27 oz. size \$1.29
  - Potatoes ..... 2 #303 cans 29¢
  - Sliced Beets ..... 2 #303 cans 29¢
  - Tomatoes ..... 4 #303 cans \$1
  - Red Salmon ..... 1 1/2 lb. can 99¢
  - Bath Tissue ..... 2 roll pkg. 29¢
  - Prune Juice ..... 2 40 oz. bot. 89¢
  - Pear Halves ..... 3 #303 cans 89¢
  - Fruit Cocktail ..... 4 #303 cans \$1
  - Golden Corn ..... 6 #303 cans \$1
  - Green Beans ..... 6 #303 cans \$1
  - Tomatoes ..... 4 #303 cans \$1
  - Bounty Towels ... 3 large rolls \$1
  - Liquid Palmolive ..... giant bottle 49¢

**Golden Bananas**  
10¢

**Ice Cream**  
\$1.29

- Enjoy a Cantonese Dinner Tonight!**
- Beef Chow Mein ..... large can \$1.19
  - Chicken Chow Mein ..... large can \$1.19
  - Mixed Vegetables ..... #303 can 37¢
  - Noodles ..... #303 can 33¢
  - Soy Sauce ..... 2 oz. bot. 23¢

- Health & Beauty Aids Specials**
- Jergens' Lotion .. 14 1/2 oz. \$1.19
  - Razor Blades ..... 2-ct. pkg. 49¢

**Cream Cheese**  
10¢

large ivory soap 2 large size 41c	medium ivory soap 2 med. size 27c	personal ivory soap 4 pers. size 35c	safeguard deodorant soap 2 reg. size 35c	zest beauty bar 2 reg. size 35c
--------------------------------------	--------------------------------------	---	---	------------------------------------

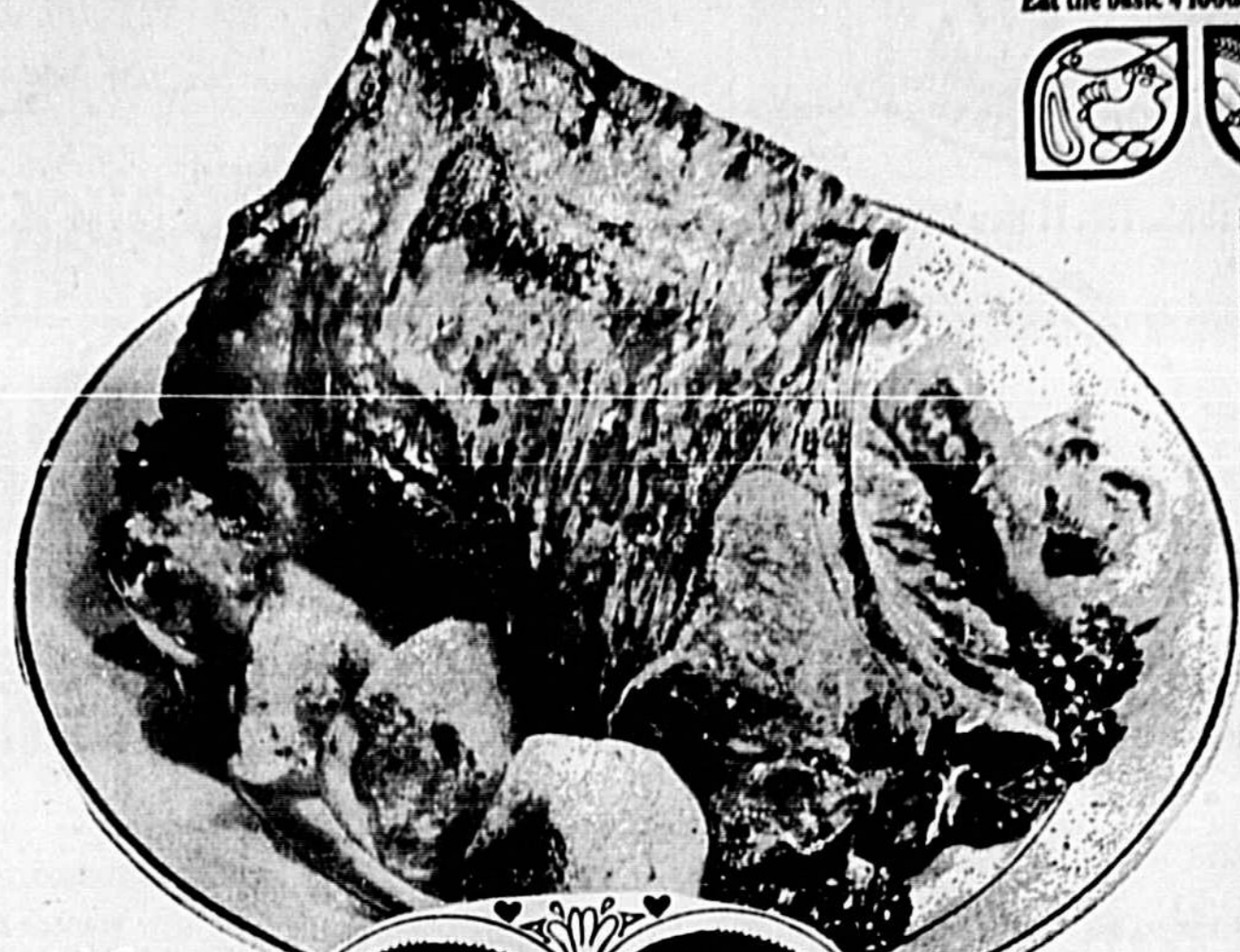
<b>Tomato Catsup</b> 3 <b>\$1</b>	<b>Facial Tissue</b> 4 <b>\$1</b>	<b>Miracle Whip</b> 49¢	<b>Elger's Coffee</b> 69¢	<b>Giant Punch</b> 59¢	<b>Soft Drinks</b> 10 <b>\$1</b>
--------------------------------------	--------------------------------------	----------------------------	------------------------------	---------------------------	-------------------------------------

this week's SUPERSEAL special

**LETTUCE SAVER**

39¢

REGULAR 98¢ VALUE



**Pork Loin Roast**  
59¢

FRESH EITHER HALF OR WHOLE

- SWIFT'S PREMIUM PROTEIN GOV'T. INSPECTED HEAVY WESTERN BEEF SALE**
- the BEEF that NEEDS LESS COOKING TIME!**
- Chuck Steaks ..... lb. 79¢
  - Pot Roast ..... lb. 79¢
  - Imperial Roast ..... lb. 99¢
  - English-Cut Roast ..... lb. \$1.09
  - Short Ribs ..... lb. 59¢

- From Our Delicatessen Dept.**
- Genoa or German Salami ..... 1/4 lb. 49¢
  - German Style Bologna ..... 1/2 lb. 59¢
  - Ham Salad ..... 1/2 lb. 69¢
  - Potato Salad ..... 1/2 lb. 39¢
  - Bar-B-Que Spare Ribs ..... 1/2 lb. \$1.39
  - Roast Beef Sandwiches ..... each 59¢
  - Submarine Sandwiches ..... each 49¢

**Steak Sale**  
\$1.19

SWIFT'S PREMIUM PROTEIN GOVERNMENT INSPECTED HEAVY WESTERN BEEF SALE! Sirloin, Key Club or Boneless Top Round

**Crisco Shortening**  
69¢

SAVE 30¢! FINEST VEGETABLE SHORTENING

- Pork Chops ..... lb. 89¢
- Pork Ribs ..... lb. 59¢
- Sliced Bacon ..... 1 lb. pkg. 62¢
- Turkey Roast ..... 2 1/2 lb. \$2.89
- Leg O' Lamb ..... lb. 89¢
- Swift's Franks ..... 1 lb. 69¢
- Smoked Daisies ..... lb. 99¢
- Brown 'N Serve ..... 8 oz. pkg. 65¢
- Beef, Ham or Turkey ..... 3 oz. 43¢
- Beef Liver ..... lb. 69¢
- Chicken Liverwurst .. 7 oz. pkg. 59¢
- Sliced Bologna .. 29¢ 49¢ 69¢
- Shrimp Cocktail ..... lb. 89¢
- Halibut Steaks ..... lb. 99¢

**PUBLIX MARKETS**

SAHFORD PLAZA Hwy. 17-92 and Onora Rd., Sanford  
HOURS: MON., TUES., WED., SAT. 9:30-7:00 THURS., FRI. 9:30-7:00 CLOSED SUNDAY

SEMINOLE PLAZA Casselberry  
HOURS: MON., THUR., SAT. 9 A.M.-9 P.M. CLOSED SUNDAY

Where Shopping is a Pleasure

heavy-duty lava soap 2 reg. size 31c	spic & span cleanser giant pkg. 99c	mr. clean liquid cleaner gt. size bot. 69c	top job liquid cleanser gt. size bot. 69c	comet cleanser 2 reg. size 39c	downy fabric softener gt. size bot. 85c	camay toilet soap 2 reg. size 27c	biz pre-soak gt. pkg. 79c
---	--	---	--	-----------------------------------	--	--------------------------------------	------------------------------

**100 Green Stamps**

- Listerine Antiseptic 14 oz. bot., 20 oz. bot. (Expires Wed., Feb. 17, 1971)
- Pristine Feminine Deodorant Spray 2 1/2 oz. size \$1.29 (Expires Wed., Feb. 17, 1971)
- Any Valentine's Day Candies (Expires Wed., Feb. 17, 1971)
- Lysol Cleaner 15 oz. bot. 59c (Expires Wed., Feb. 17, 1971)
- Johnson's Lemon Pledge 14 oz. can \$1.43 (Expires Wed., Feb. 17, 1971)
- Texize Fluff Rinse gallon 99c (Expires Wed., Feb. 17, 1971)
- Assorted Renuzit Air Fresheners 7 oz. can 49c (Expires Wed., Feb. 17, 1971)
- Dairy-Fresh Sour Cream 10 oz. cup 49c (Expires Wed., Feb. 17, 1971)
- Howard Johnson's Party Angel Cake 9 oz. pkg. 79c (Expires Wed., Feb. 17, 1971)
- Singleton's Frozen Cooked Shrimp 10 oz. pkg. 79c (Expires Wed., Feb. 17, 1971)





# Pheasant Flambe Is Tasty

By TOM HOGE  
Associated Press Writer

One of the tastiest game birds I know is the pheasant, that plump, succulent bird that abounds in the fields of North America and has a far more delicate flavor than most of its wild brethren.

As one who grew up in pheasant country I well remember being invited to holiday season dinners with a pheasant as the main course.

Two of the best-known birds are the English pheasant and the Chinese ring-neck. The English cousin first came from Asia Minor and the ring-neck, of course, from China.

Introduced to North America in the 1880s, the birds have been inter-bred over the years. They have turned the Dakotas into a hunter's paradise and are found in production in many other American states.

One of the great recipes for pheasant, however, comes not from England or America, but from Spain of the 16th century. That was known as the golden age of Spanish cookery, and rivaled the best days of France.

This ancient formula, known as Pheasant Flambe, was the centerpiece at a recent banquet of The Moveable Feast, an imaginative new food and wine society that gives 12 dinners and 12 wine tastings a year in both New York and Washington.

Four centuries ago, the Benedictine monks of the Alcantara monastery conceived a method of roasting, parading and flaming the Spanish pheasant that has lived in the annals of fine cooking. The fire burns into the flesh of the bird and balances the flavor of foie gras, chopped pheasant livers and truffles.

**PHEASANT FLAMBE**  
One 2 1/2 pound pheasant  
1/2 cup Spanish olive oil  
2 tablespoons butter  
1 tablespoon chopped parsley  
1 tablespoon chopped shallot  
1 slice foie gras 1/2 inch thick 2 inches square  
1/2 tablespoon Spanish brandy  
1 tablespoon Grand Marnier  
1 cup beef gravy  
Salt to taste  
Preheat oven at 375 degrees, salt pheasant and place in roasting pan. Pour olive oil over pheasant and roast for 45 minutes, basting every 15 minutes. To test if bird is done, prick breast. If juice runs out, cook about 15 minutes longer. Remove pheasant from roasting pan and carve removing breast bone. Without removing meat from bone of upper leg, make slit in meat and stuff with truffles. Do same for breast meat.

In a large, shallow skillet melt three tablespoons butter, add chopped parsley and shallots. Sauté until shallots are transparent. Add pheasant livers, foie gras and stir several minutes dissolving foie gras. Pour in beef gravy and mix until it thickens.

Add pieces of pheasant and cook until sauce is reduced, about 10 minutes. Tilt slightly and pour brandy and Grand Marnier on high side and ignite. Once lit, pour over meat with spoon and mix with gravy. When flame dies, transfer bird to platter. Serve with a Chateau Sourd 1964 from the Bordeaux town of Libourne on the St. Emilion slopes. Serves two.

**HOUSEHOLD HINTS**  
Wash those chicken livers in cold water and dry them thoroughly before frying.  
For a luscious salad team sliced cooked white-meat chicken with lettuce, sliced oranges and sliced (paper-thin) red onion rings. Pass French dressing or mayonnaise.  
Toss cubes of sliced bread with garlic-flavored olive oil; spread in a single layer in a shallow pan and bake in a preheated hot oven until brown and crisp. Toss mixed salad greens with French dressing and top with the croutons.



# HERE'S WHERE YOU GET THE SAVINGS

PRICES GOOD THURS., FEB. 11 thru WED., FEB. 17

## Bakery Specials

- DATE DARLING BUTTERFLIE Bread ..... 2 1/2-oz. 59¢
- DATE DARLING BROWN 'N' SERVE TWIN Rolls ..... 2 12-oz. 59¢
- DATE DARLING COCONUT & PECAN Twirls ..... 2 4-oz. 59¢
- DATE DARLING BROWN 'N' SERVE FLAT Rolls ..... 2 12-oz. 59¢



DETERGENT  
**ARROW 29¢**  
Link One With \$7.50 or More Purchase Excluding Cigarettes  
● BLUE ● WHITE OR ● COLD WATER  
49-oz. BOX  
SAVE 40¢

CHICAGO LOUIS COLD DUCK 49-oz. \$1.99

<b>ASTOR Shortening</b> 3 39¢ 1-LB. CAN	<b>ASTOR COFFEE</b> 3 59¢ 7-LB. CAN	<b>PILLSBURY FLOUR</b> 5 48¢ 5-LB. BAG	<b>THRIFTY MAID SWEET OR UNSWEETENED GRAPEFRUIT JUICE</b> 3 31¢ 46-oz. CANS
---	---	--	---

<b>ANCHOVINA Sausage</b> 4 1/2-oz. 1.00	<b>THRIFTY MAID LINER</b> 3 1.00	<b>SUDON BEAUTY HAIR Spray</b> 4 49¢	<b>SAVE 50¢ MISTLES Quik</b> 2 78¢
<b>PLUMOSE DEVL Ham</b> 3 1.00	<b>DEL MONTE PINEAPPLE Juice</b> 3 1.00	<b>CHOCOLATE ASSORTED COOKIES</b> 3 1.00	<b>BRACH COMIC VALENTINE Candy</b> 5 79¢
<b>MONSIEUR FANCY LONG GRAIN Rice</b> 3 39¢	<b>LANCE COCOA! Peanuts</b> 4 1.00	<b>FRIGIDAIRE FOOD</b> 7 1.00	<b>BRACH IMPERIALS CHOCOLATE Candy</b> 12 39¢
<b>THRIFTY MAID CUT Asparagus</b> 3 1.00	<b>SAVE 20¢ LISTERINE</b> 3 1.19	<b>DEBARI ASSORTED CHOCOLATE Candy</b> 3 1.00	<b>BRACH CONVERSATION Hearts</b> 12 39¢

<b>THRIFTY MAID TOMATO CATSUP</b> 3 1.17	<b>DEEP SOUTH Strawberry PRESERVES</b> 3 59¢	<b>THRIFTY MAID SMALL WHOLE OR SLL. WHITE POTATOES OR SLICED CARROTS</b> 8 1.33	<b>GUSTAFSON'S FRESH HOMOGENIZED MILK</b> HALF GAL 59¢
---	---	--	---

<b>THRIFTY MAID DELICIOUS PINEAPPLE</b> 4 1.25	<b>THRIFTY MAID SAUERKRAUT</b> 6 1.19	<b>THRIFTY MAID MIXED VEGETABLES</b> 6 1.25
--	---------------------------------------	---

<b>ROYAL FILLINGS Pie Fillings</b> 3 39¢	<b>EL PASO MACARONI</b> 2 35¢	<b>SLICED CUKES</b> 4 47¢	<b>SWAN Instant Coffee</b> 4 1.00
<b>SWELL CREAMY FUDGE Frosting</b> 3 39¢	<b>WITCHAMPEL Grape Jam</b> 4 47¢	<b>STAYWELL MINI-PADS</b> 30 99¢	<b>DOLE SLICED OR CRUSHED OR CHUNK Pineapple</b> 4 43¢

# Plus TOP VALUE STAMPS WINN-DIXIE

PRICES GOOD THURS., FEB. 11 thru WED., FEB. 17



Everybody's Favorite Breakfast...  
**BACON 48¢**  
SUPERBRAND GRADE "A" FRESH FLORIDA ALL WHITE LGE. EGGS 2 DOZ. ONLY 89¢

## Dairy Specials

- ROBERT'S SINGLE WRAPPED SLICED CHEESE 16-oz. 99¢
- SUPERBRAND CREAMED COTTAGE Cheese ... 2 1/2 69¢
- SUPERBRAND SLICED NATURAL SWISS Cheese ..... 4-oz. 45¢
- ROBERT'S ALL FLAVORS Yogurt ... 4 1/2 1.00

<b>USDA CHOICE W-D BRAND BONELESS BOTTOM ROUND ROAST</b> SAVE 31¢ 98¢ 1-LB. CAN	<b>W-D BRAND PURE GROUND BEEF</b> SAVE 70¢ 10 4.99 1-LB.	<b>USDA CHOICE W-D BRAND BONELESS SHOULDER ROAST</b> SAVE 21¢ 98¢ 1-LB.	<b>FRESH BOSTON BUTT PORK ROAST</b> 1/2 OR WHOLE FRESH PORK HAMS 1.59
--	---	--	---

<b>FRESH ONE HALF PORK LOIN Roast</b> 1/2 59¢	<b>U.S. CHOICE GRADE "A" STEAKS N.Y. STRIPS</b> 1.39	<b>SUNNYLAND PORK BREAKFAST LINK Sausage</b> 2 1/2 1.99	<b>W-D BRAND CURED BEEF Steakettes</b> 2 1.58
<b>FRESH FULL QUARTER LOIN SLICED INTO PORK Chops</b> 1/2 69¢	<b>FRESH STANDARD Oysters</b> 8-oz. 79¢	<b>USDA JENNIE O BASTED TURKEY Breast</b> 1/2 89¢	<b>100% ANY Tarrow Pizza</b> 1.69
<b>FRESH CENTER CUT PORK Chops</b> 1/2 89¢	<b>OSCAR MAYER SMOKE LINK Sausage</b> 12-oz. 79¢	<b>FRENCH FRIED HAT AND SERVE FISH Sticks</b> 2 89¢	<b>COPELAND SLICED ALL MEAT Bologna</b> 1.69
<b>FRESH PORK SHOULDER Steak</b> 1/2 59¢	<b>SINGLETON'S COCKTAIL Shrimp</b> 3 79¢	<b>COMPANY BRUNCH Melon Balls (from frozen) Shrimp Omelet, Crisp Bacon Saffron Coffee Cake, Beverage Saffron Corned Beef Cake</b> 2 23¢	

<b>HI-ACRES ORANGE JUICE</b> SAVE 10¢ 6 79¢ 6-oz. CANS	<b>TEMPLE ORANGES</b> 10 59¢ FOR	<b>OCOMA CHICKEN, BEEF OR TURKEY MEAT PIES</b> SAVE 20¢ 6 1.20	<b>ICBERG FRESH LETTUCE</b> 2 39¢
---	--	--	--------------------------------------

<b>HARVEST FRESH LARGE Celery</b> 2 29¢	<b>CANADIAN Rutabagas</b> 10 1.00	<b>SAVE AT TASTE OF SEA FRESH Dinners</b> 3 1.00	<b>W-D BEEF Steakettes</b> 2 89¢
<b>ALL PURPOSE Apples</b> 5 59¢	<b>FILBERTS CORN OIL (Gm.) Margarine</b> 12 45¢	<b>AUNT JEMIMA Waffles</b> 2 89¢	<b>ASTON MIXED VEGETABLES</b> 4 1.00
<b>FRESH YELLOW Onions</b> 3 29¢	<b>SAVE 10¢ WELCH'S Grape Juice</b> 12 39¢	<b>NICH'S Coffee Rich</b> 4 1.00	<b>ASTON ENOUGH Peas</b> 5 1.00
<b>FRESH CRISP Carrots</b> 2 25¢	<b>AUNT MINNIE'S DEVILED Crab</b> 3 99¢	<b>BIBBY'S COOL &amp; Creamy</b> 2 89¢	<b>JACK'S COCONUT Delights</b> 11 39¢
<b>CHEF BOY AR DEE Beefaroni</b> 10 39¢	<b>FIELD TRIAL CHUNK Dog Food</b> 10 99¢	<b>PALMOLIVE Gold Soap</b> 2 47¢	<b>AXAT LIQUID (13-oz. 24) Cleaner</b> 2 69¢
<b>JIM SANDY (1-LB. 50) Dog Ration</b> 10 1.23	<b>PALMOLIVE Soap</b> 3 39¢	<b>GALAXY Cleaner</b> 2 69¢	<b>TERIZ Aqua Lotion</b> 2 39¢

## Pretty Idea To Go With Beverages

By CECILY BROWNSTONE  
Associated Press Food Editor  
To serve with holiday drinks here's a pretty idea. Using various spreads, form them into ball shapes. Arrange the balls interspersed with cherry tomatoes and pinpoints-stuffed olives in wreath fashion on a round tray.  
Because the balls are rolled in chopped walnuts, minced parsley and coconut, you'll have an attractive array.  
Here are the recipes for the spreads.

**DEVILED HAM BALLS**  
1 package (3 ounces) cream cheese, softened  
1 can (4 1/2 ounces) deviled ham  
1 teaspoon paprika  
1 cup finely chopped walnuts  
Mix cheese, ham and paprika with cup of the walnuts; roll. Form into 24 balls and roll in remaining walnuts; chill.

**LIVERWURST BALLS**  
1 package (3 ounces) cream cheese, softened  
1 can (4 1/2 ounces) liverwurst spread  
1/2 teaspoon instant minced onion  
1/4 teaspoon Worcestershire sauce  
Tabasco sauce to taste  
1/2 cup minced fresh parsley  
Mix cheese, liverwurst, onion, Worcestershire and Tabasco; chill. Form into 25 balls and roll in parsley; chill.

**CORNERED BEEF BALLS**  
1 package (3 ounces) cream cheese, softened  
1 can (4 1/2 ounces) corned beef spread  
3 tablespoons drained crushed pineapple  
1/2 cup minced fresh parsley  
1/2 cup finely chopped walnuts  
Mix cheese, corned beef and pineapple; chill. Form into 12 to 13 balls and roll in a mixture of the parsley and walnuts; chill.

**CHICKEN BALLS**  
1 package (3 ounces) cream cheese, softened  
1 can (4 1/2 ounces) chicken spread  
1 1/2 cup finely chopped sliced almonds  
1 tablespoon mayonnaise  
2 teaspoons finely chopped chutney  
1 to 1 1/2 teaspoons curry powder  
1 cup flaked coconut  
Mix cheese, chicken spread, almonds, mayonnaise, chutney and curry; chill. Form into 18 to 20 balls and roll in coconut; chill.

**COMPANY BRUNCH**  
Melon Balls (from frozen)  
Shrimp Omelet, Crisp Bacon Saffron Coffee Cake, Beverage Saffron Corned Beef Cake  
Saffron imparts color and flavor.  
1/2 teaspoon saffron pieces  
1/2 cup lukewarm milk  
1/2 cup shortening  
1/2 cup white cornmeal 1-2nd cup sugar  
3 teaspoons baking powder  
1/2 teaspoon salt  
1/2 teaspoon nutmeg  
1/2 cup shortening  
1/2 cup currants, plumped  
1 tablespoon grated orange rind  
2 eggs, slightly beaten  
Orange Glaze, see below  
Grease bottom of 8-inch square cake pan; line bottom with wax paper; grease paper. Add saffron to milk; let stand 20 minutes; strain through a fine-mesh strainer or cheese cloth. Into a medium mixing bowl sift together the flour, cornmeal, sugar, baking powder, salt and nutmeg. Cut in shortening until particles are fine. Add currants, orange rind, eggs and saffron-flavored milk.  
Stir only until dry ingredients are dampened. Turn into prepared pan. Bake in a preheated oven until golden brown, 30 to 35 minutes. Loosen edges and turn out; remove wax paper; invert and frost with Orange Glaze. Cut and serve warm.

**ORANGE GLAZE:** Beat together until smooth 1 cup sifted confectioner's sugar, 1 tablespoon melted butter, 2 tablespoons orange juice and 1/2 teaspoon orange extract.

Two or three drained canned pineapple chunks with orange sections. Sprinkle with flaked coconut before serving.  
Cook fresh plums in a sugar syrup and cool. Add a little brandy to the plum syrup before serving.



**Turnovers**  
A la Prune  
Is Tasty

By CECILY BROWNSTONE  
Associated Press Food Editor  
Prunes have a lot going for them. They contribute Vitamin A, riboflavin and niacin. In the mineral line they are an excellent source of iron and also provide copper, calcium and phosphorus.

Youngsters enjoy prunes "as is" to eat out of hand. Oldersters enjoy them cooked briefly with slices of orange and lemon. And most everyone likes prunes in a salad—especially when they are stuffed with cream cheese and served with crisp greens, slices of orange and rings of sweet onion. This salad tastes particularly good when it is dressed with an oil and vinegar dressing.

Prunes make a great filling, teamed with apple, for turnovers. The following recipe for this dessert is based on a delicious pastry—one made with cream cheese, butter and flour. When we baked these turnovers in our kitchen, we stored some of them in the freezer. They froze beautifully and were delicious reheated.

**PRUNE-APPLE TURNOVERS**  
1 cup (two 1/4 pound sticks) butter  
1 package (8 ounces) cream cheese  
2 cups unflavored flour  
3/4 cup quartered pitted prunes  
3/4 cups pared diced apple  
1/4 cup sugar  
1/4 teaspoon allspice  
Extra butter  
Have butter and cheese at room temperature. In a medium mixing bowl blend with a wooden spoon, gradually blend in flour. Divide in half.  
Turn out each half on a sheet of transparent plastic wrap and shape each into a flat round; wrap and chill.  
In a small mixing bowl mix together the prunes, apple, sugar, cinnamon and allspice.  
On a floured pastry cloth, with a floured sheet-covered rolling pin, roll out one-half of dough to between 1/4 and 1/2 inch thickness. Cut into 4 inch rounds.  
Place a tablespoon of the prune mixture off center on each round of dough; dot with extra butter. Fold rounds over to make semi-circles. Seal edges with a fork and cut vents in top.  
Treat remaining half of dough the same way.  
Place turnover, a few inches apart, on ungreased cookie sheets. Bake in a preheated 425-degree oven until apples are soft and pastry is lightly browned—about 15 minutes.  
Serve warm or reheat. Dust with confectioners' sugar before serving.  
Makes about 2 dozen turnovers.

**GOOD DINNER**  
Vial Chop  
Pinales  
Broccoli with Brown Butter  
Solid Bowl  
Bread Tray  
Apple Cabbler  
Beverage  
BROCCOLI WITH BROWN BUTTER  
Broccoli cuts are given new flavor.  
1 large bunch broccoli, leaves and tough ends removed  
1 cup boiling water  
1/2 cup butter  
4 tablespoons salt  
1/2 cup unflavored flour  
With swivel-blade vegetable peeler, pare outer covering from broccoli stalks up to florets. Wash in cold water. Cut up florets and separate to make small and even. Slice stalks crosswise on the bias to make thin slanted ovals; place in a 19-inch skillet with florets on top. Add water and salt. Bring to a boil and boil until tender-crisp—about 5 minutes; lift cover a few times to help keep broccoli green. Drain. Meanwhile in a small saucepan slowly heat butter until melted; keep heating, stirring often, just until butter turns a light brown color. Pour butter over broccoli and fry gently. Serve at once. Makes 6 servings.

When you are preparing stewed dried figs, do not soak the fruit before cooking.  
Top chicken salad with braised crisply cooked bacon.  
Use either a sharp knife or a pair of kitchen scissors when you are cutting up a chicken.



CHECK & COMPARE

Milani 1890  
**DRESSINGS**  
3 8-OZ. BTL. 89c

SAVE REAL CASH

Dixie Crystals  
**SUGAR**  
5 LB. BAG 49c

WHY PAY MORE

Blue Plate  
**MAYONNAISE**  
48c

SAVE REAL CASH

Green Giant  
**GREEN GIANT**  
4/98c

CHECK & COMPARE

Armour  
**ARMOUR BEER**  
4/98c

Shop Your Connoisseur  
A&P A-MART, Located At  
PINECREST SHOPPING CENTER  
Hwy. 17-92 at 27th St., Sanford

**JOIN THE SWING TO A-MART DISCOUNT FOODS**

**COMPARE DISCOUNT PRICES**

Blue Plate  
**COOKING OIL** QT. JAR 39c

Save 11c on this A-MART SPECIAL  
PILLSBURY Plain or Self Rising  
**FLOUR** 5 lb. bag 48c

FROZEN  
**Bake-A-Tata** 4 10-OZ. PKGS. \$1

CASCADE ELEC. DISHWASHING  
**Detergent** 59c

RENUZIT (5 SCENTS)  
**Air Freshener** 3 7-OZ. CANS \$1

ARMOUR  
**Chili with Beans** 15-OZ. CAN 41c

CANNED  
**Armour Treat** 12-OZ. CAN 67c

PROTEIN  
**21 Shampoo** 4-OZ. SIZE 79c

SUNSHINE 10-oz. LEMON COOLERS or  
**Hy'x Cookies** 14 1/2-OZ. PKG. 45c

COMPLETE PANCAKE MIX (Bonus Gifts Coupon Value)  
**Aunt Jemima** 2-LB. BOX 49c

Syrup  
**Aunt Jemima** 12-OZ. SIZE 35c

National Bohemian  
**BEER** 6 12-OZ. N.R. BOTTLES 88c

SAVE 12c AT A-MART  
**CLOROX** 3% OFF LABEL  
Gal. Jug 48c

SAVE REAL CASH  
**Wishbone ITALIAN DRESSING**  
16 oz. Bottle 59c

SAVE 15c AT A-MART  
**MAXIM FREEZE DRIED COFFEE**  
8 oz. Jar \$1.78

YOU'LL PAY MORE ELSEWHERE!

Am Page Peach, Pineapple or Apricot  
**Preserves** 18-oz. 39c

Per Man For  
**Dry Milk** 20-oz. \$1.99

Morton's Frozen  
**Blueberry Pies** 20-oz. pkg. 48c

Morton's Frozen  
**Fruit Pies** 3 20-oz. pkg. 89c

**YOU SAVE MORE**

**A-MART HAS THE LOWEST FOOD PRICES**



"Super-Right" 1/4 Pork Loins Sliced  
**PORK CHOPS** LB. 58c

Save More at A-MART Discount Foods  
Grade A Fresh Fla. or Ga. Whole Bagged  
**FRYERS** LB. 28c

"SUPER-RIGHT" BLADE CUT  
**Chuck Roast** LB. 58c

"SUPER-RIGHT" SHOULDER OR  
**CALIF. ROAST** Lb. 78c

"SUPER-RIGHT" FRESHLY  
**Ground CHUCK** lb. 78c

"SUPER-RIGHT" WESTERN PORK  
**BOSTON BUTTS** lb. 48c

SULTANA FROZEN (EXCEPT HAM)  
**Mt. Dinners** 11-OZ. PKG. 38c

**COPELAND TRUCK LOAD SALE**

Copeland Fresh Or Smoked HAMS	lb. 58c
FRESH PICNICS	lb. 48c
FRANKS	48c
Copeland Bag Sausage or BOLOGNA	1-lb. pkg. 67c
HAM	12-oz. pkg. \$1.27
Fresh SC or Smoked LINK SAUSAGE	lb. 78c
LIVER SAUSAGE	lb. 48c
SMOKED HOCKS	lb. 33c
SLICED PICNIC	12-oz. \$1.07

SAVE 10c THIS WEEK  
**Jane Parker PUMPKIN PIE** 22 oz. 49c

SAVE 16c THIS WEEK  
**Jane Parker Peach Pie** 22 oz. 43c

SAVE REAL CASH  
**Jane Parker GLAZED DONUTS** 17 oz. Pkg. 53c

DISCOUNT PRODUCE

WASHINGTON STATE RED DELICIOUS  
**APPLES** 10 for 78c

FRESH YELLOW  
**ONIONS** 3 LB. BAG 25c

CRISP ICEBERG  
**LETTUCE** HD. 25c

1000 EXTRA BONUS GIFTS POINTS from A&P  
WORTH \$1.00 CASH OR 1,000 EXTRA TRADING STAMPS  
This coupon is good for a 1000 point extra bonus value included in a Bonus Gift certificate.  
A \$1.00 cash or 1000 points value from A&P.  
This coupon is good for a 1000 point extra bonus value included in a Bonus Gift certificate.  
WORTH 1000 EXTRA BONUS POINTS  
OFFER EXPIRES MAY 1, 1971. See store for details. NOT A STORE COUPON. RESUME BY MAIL. FOLLOWING RESTRICTIONS APPLY.

Money Saving Coupon  
**Pillsbury CAKE MIXES** with this coupon 3 18-oz. pkg. 98c without coupon

Money Saving Coupon  
**SAVE 10c on Total Cereal** with this coupon 8-oz. box 34c 12-oz. box 48c

SAVE REAL CASH  
"SUPER-RIGHT" BAG  
**SAUSAGE** 3 1-LB. BAGS \$1.00

"MARKET STYLE" SLICED  
**BACON** LB. 48c

WHY PAY MORE  
"SUPER-RIGHT" SWISS  
**STEAKS** LB. 88c

CHECK & COMPARE  
White  
**POTATOES** 10 LB. BAG 48c

SAVE REAL CASH  
**R-C COLA** 4 28-OZ. BTL. 97c

Prices in This Ad are effective through Feb. 17. (Bakery specials good through Feb. 14, 1971. Quantity Rights Reserved.)

**Cherry Cheese Kuchen**  
By CECILY BROWNSTONE  
AP Food Editor  
PARTY BRUNCH  
Baked Ham Homemade Mustard  
Deviled Eggs Spoon Bread  
Cherry Cheese Kuchen Beverage  
CHERRY CHEESE KUCHEN  
Makes a fine dessert for brunch.  
1 1/2 to 2 cups unflavored flour  
1/2 tablespoons sugar  
1/2 teaspoon salt  
1 package active dry yeast  
1/2 cup milk  
1/2 cup water  
4 tablespoons (1/2 of a 1/2 pound stick) butter or margarine  
1 large egg at room temperature  
1 can (1 pound) sweet pitted cherries, drained  
Cheese Topping, see below  
In a small bowl or electric mixer thoroughly stir together 1/2 cup of the flour, the sugar, salt and undissolved yeast. Into a small saucepan turn the milk and water; heat gently until very warm (120 to 130 degrees); butter does not have to melt; gradually stir into yeast mixture. Beat 2 minutes at medium speed, scraping bowl several times. Add egg and 1/2 cup of the flour or enough flour to make a thick batter. Beat at high speed for 3 minutes, scraping bowl several times. Stir in enough additional flour to make a stiff batter. Spread in a well-greased 9-inch square cake pan. Place cherries on top; sprinkle with Cheese Topping. Cover; let rise in a warm draft-free place until doubled in bulk—about 1 hour. Bake in a preheated 350-degree oven about 40 minutes. Remove from pan and cool on wire rack.  
CHEESE TOPPING: In a small bowl thoroughly mix together 1/2 cup firmly packed light brown sugar, 1/2 cup grated sharp cheddar cheese, 1/2 cup unflavored flour and 2 tablespoons room-temperature butter or margarine.

By CECILY BROWNSTONE  
AP Food Editor  
TEEN-AGE PARTY  
Open Sandwiches, Pizza Style  
Salad Bowl  
Freshly Popped Popcorn  
with Red Apples  
Beverage  
COOKIES  
OPEN SANDWICHES, PIZZA STYLE  
Youngsters can make these themselves.  
1 can (8 ounces) tomato sauce  
1 tablespoon grated Parmesan cheese  
1/2 teaspoon oregano  
1/4 teaspoon garlic salt  
1 hamburger meat  
1/4 cup creamy peanut butter  
8 slices process American cheese  
In a small mixing bowl, with a fork, beat together the tomato sauce, Parmesan, oregano and garlic salt. Split rolls and toast lightly; spread with peanut butter; spoon tomato mixture over peanut butter; top with cheese.

THE BRIDE COOKS DINNER  
Pot Roast Frances  
Carrons  
Baked Minced-meat-stuffed Peaches  
POT ROAST FRANCES  
The meat bakes tender in the oven.  
2 pounds (about) bonless lean chuck beef pot roast  
1 teaspoon salt  
1/4 teaspoon pepper  
1/2 teaspoon ginger  
1/2 teaspoon onion powder  
1 cup coarsely chopped onion  
1 can (8 ounces) wax beans  
1 beef bouillon cube  
Mix salt, pepper, onion and garlic powder and rub over meat; place in a baking dish; surround with onion. Drain liquid from wax beans into a measure and add enough water to make 1 cup; pour into a small saucepan and add bouillon cube; heat to dissolve cube; pour over onion. Cover tightly. Bake in a 350-degree oven until tender—2 to 2 1/2 hours; about 15 minutes before ready skin off excess fat and add wax beans. Makes 4 servings.

Buy fresh lines that are a healthy green color; when times turn yellow they lose some of their flavor.  
Dip sliced fresh peas in citrus or pineapple juice to prevent discoloration.

Dear Abby: By Abigail Van Buren

Dear Abby: I know I had a stroke in the lobby of his place of business. He lay on the floor in that lobby for about an hour and a half. It was nearly rush hour. I suppose people thought he was drunk so they poured it over him. He died the following day.

Dear Abby: I am a young woman with a good husband, three nice sons and a full busy life. But "Wrong Way Corrigan" has nothing on me. I do a lot of things, but let me tell you, and from the shows,

Horoscope Forecast

THURSDAY, FEB. 11, 1971
GENERAL TENDENCIES: Only by being charming and considerate in your actions with others do you find it possible to overcome a tendency to be too introspective and a feeling that you are being imposed upon and taken advantage of by others. Think things through now instead of yielding to the temptation to be entirely too emotional.



OUR BOARDING HOUSE



OUT OUR WAY



PRICILLA'S POP



SHORT RIBS

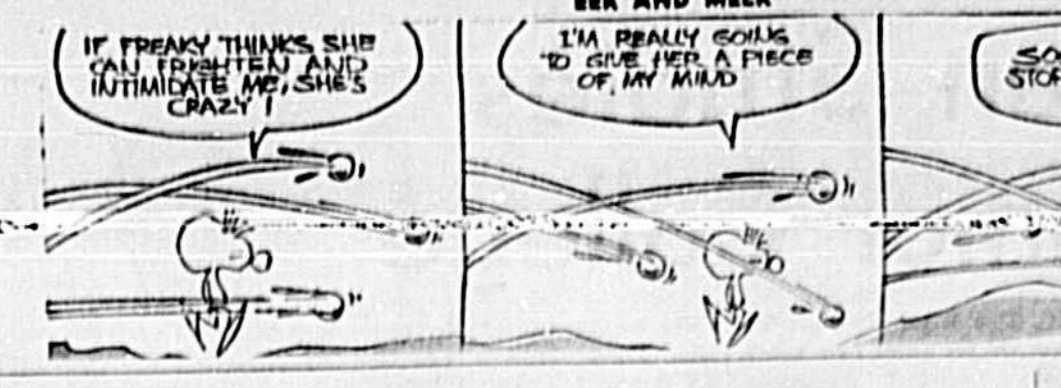


BUGS BUNNY



Polly's Pointers By Polly Cramer

Polly's Problem: Nail polish remover does work quickly and easily on a slick, glossy surface. However, it will also remove the finish on many plastics, including the surface of your car.



We The Women: By Betty Canary

Nobody is more boring than a name dropper, especially if you don't recognize the names she's dropping. She grates on the nerves almost as much as the man who sits next to you at a concert and hums along with every note of the orchestra.

Jacoby On Bridge

North's two no-trump calls were the Jacoby Two-No-Trump. The bid has nothing at all to do with no-trump but is a strong raise of partner's major suit opening. Those players who use this artificial convention must give up the standard 1313 point two-no-trump response but there are compensating advantages.

Jacoby and Son

When winning the second club he plays two rounds of diamonds. Trumps: ruffs dummy's last club and leads a low diamond. West must play low, whereupon South plays dummy's eight diamonds. East wins with the ace and is now thoroughly frustrated. He doesn't have a club but that doesn't matter since a club lead would allow a ruff in one hand and a spade discard from the other.

Worry Clinic

Many editors are familiar with the advice that if the show fits wear it. And if a person sees his faults mirrored in this daily educational "print clinic," he can either correct them. Or, (which is the lazy solution), he can damn this column and try to stampede an editor to cancel it.

By Dr. Crane

her husband throughout the first pregnancy. After it was over, she twisted the obstetrician's remarks till she made it seem that her husband was a brute and a monster if he thus jeopardized her life with a second pregnancy. This is a common trick of self-centered wives.

THE WILKETS



THE PHANTOM



Highlights

7:30 p.m. ABC: The Courtship of Eddie's Father. Former astronaut Gordon Cooper brings a touch of outer space to the show tonight. When Eddie (Brandon Cruz) asks the former astronaut to lunch, Cooper, accepts, surprising everyone but Eddie. Also featured are regulars Bill Bisy and Miyoshi Umeki and guests Kristin Holland and Bill Foy.

TV Time Previews

WEDNESDAY EVENING: 6:00 Hawaii Five-O; 6:30 Around the World; 7:00 Dark Valley Days; 7:30 Man From Shiloh; 8:00 Room 222; 8:30 To Live with Love; 9:00 Smith Hall.

CARNIVAL By Dick Turner



Travelogue

Table with columns for ACROSS, DOWN, and various travel destinations like Canada, Hawaii, Alaska, etc.

Television Tonight

WEDNESDAY EVENING: 6:00 Hawaii Five-O; 6:30 Around the World; 7:00 Dark Valley Days; 7:30 Man From Shiloh; 8:00 Room 222; 8:30 To Live with Love; 9:00 Smith Hall.

DeBary Firemen Aid CP

DeBary — Sometimes DeBary reminds us of Chicago — "It WILL be a city!" This time they have paid for their Fire Truck bought in May, 1970. The Firemen's Association borrowed \$9,000 to make a cash payment of \$25,000 for the truck and equipment.

Teaching Aid

TORONTO (AP) — Teachers working with mentally retarded children will be able to observe their teaching successes and failures on videotape at the National Institute on Mental Retardation's new Albany, N.Y. research division which opened recently at York University.

Advertisement for Caesar's restaurant.

Advertisement for Plaza restaurant.

Advertisement for Hotel.

Advertisement for The Hawaiians.

Advertisement for Cocktail Hour.

Advertisement for Michael's restaurant.

Advertisement for Greyhounds Racing.

Advertisement for Freddie's restaurant.

