



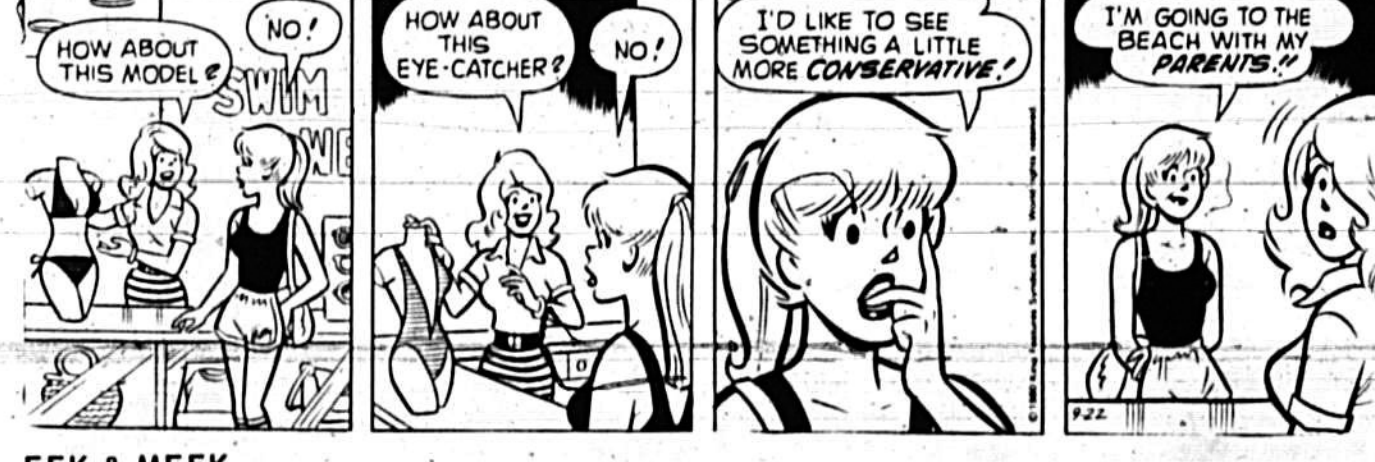
BLONDIE by Chic Young



BEETLE BAILEY by Mort Walker



THE BORN LOSER by Art Sansom



ARCHIE by Bob Montana



Eek & MeeK by Howie Schneider



PRISCILLA'S POP by Ed Sullivan



BUGS BUNNY by Stoffel & Heimdahl



FRANK AND ERNEST by Bob Thaves



TUMBLEWEEDS by T. K. Ryan

Exercise Sensibly To Lower Weight. Dr. Lamb. DEAR DR. LAMB - I'm curious as to how many calories are used during exercises...

ACROSS 42 Inevitable out-come. 44 Farward sound. 46 Boot camp...

DOWN 1 Charges handler. 2 Invitation response (abbr.)...

HOROSCOPE. By BERNICE BEDE OSOL. YOUR BIRTHDAY Sept. 23, 1980. A larger-than-usual income can be gleaned this year...

WIN AT BRIDGE. NORTH 3-2-4-0. WEST 4-1-0-6. EAST 2-2-2-2. SOUTH 4-3-3-2. DEALER: North.

ANNE. I - I DON'T KNOW WHAT TO SAY, JED - THERE'S POPPY TO CONSIDER - AND ANNIE AND SANDY - I CAN HANDLE IT, MY PLEASE THINK ABOUT IT!

FLETCHER'S LANDING. IS WOMAN USING HER HEAD METRIC CONVERSION CHART? YES, IN FACT SHE RELIES ON IT TOO HEAVILY.

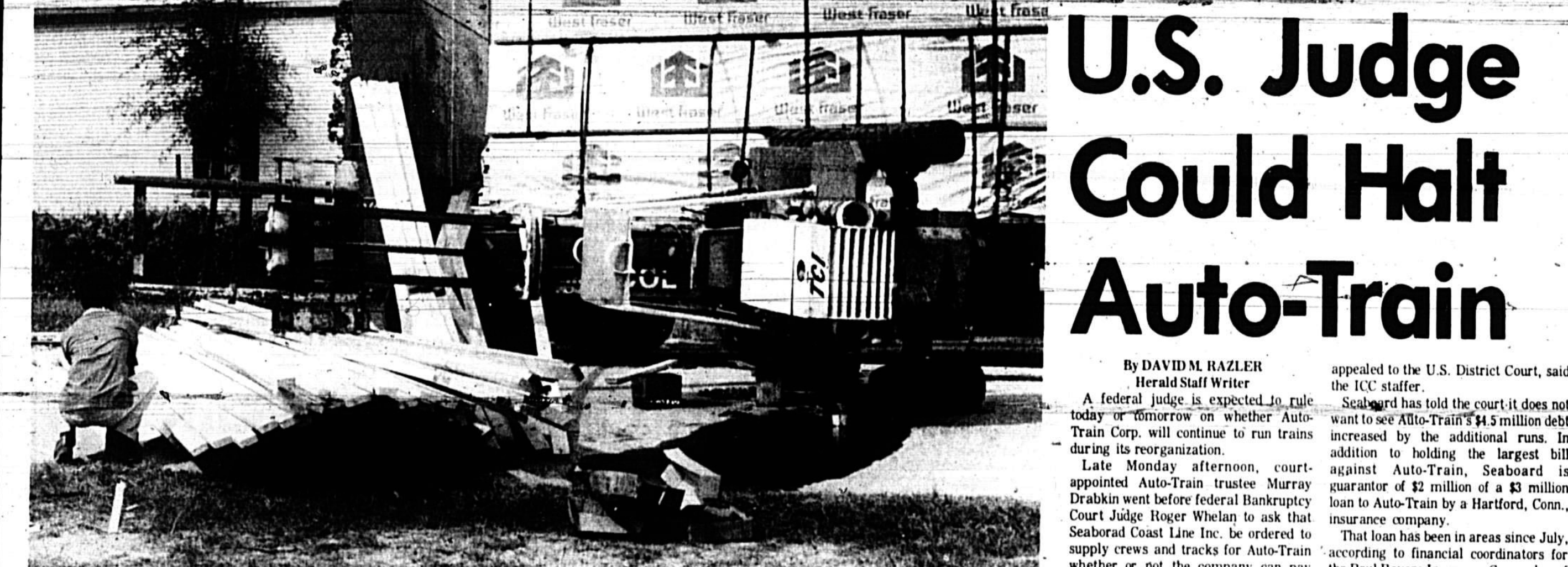
PHARMACY. THESE DIET PILLS DON'T WORK!... THEY CAN'T RESIST DESSERTS!

Report To Longwood Opposes Sewer Tie-In. By JANE CASSELLBERRY. A Longwood sewage treatment facility study, which has taken 15 months to complete...

Evening Herald. 73rd Year, No. 26—Tuesday, September 23, 1980—Sanford, Florida 32771. Evening Herald—(USPS 481-280)—Price 20 Cents

Some County Grocers Upset Over 'Dual Inspections'

By DIANE PETRYK. A county crackdown on health code violations at several area grocery stores is stirring up muddy waters in state and county inspection systems...



LAYING DOWN ON THE JOB. A Gregory Lumber Company employee was unloading lumber from a flat car parked on a siding on Commercial Street just west of Park Avenue Monday about 3 p.m. when the fork lift which he was operating became too heavy and flipped over on its side.

Sanford Tables 11 p.m. Park Curfew

By DONNA ESTES. The Sanford City Commission, on recommendation of City Manager Warren Knowles, took no action Monday night on a request from Parks and Recreation Director Jim Jernigan that an 11 p.m. curfew be set in city parks.

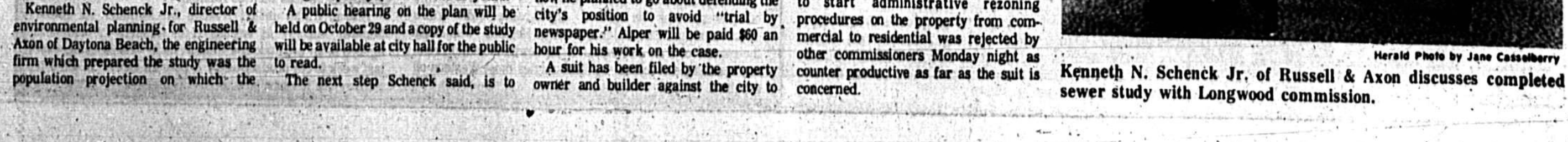
Food Prices Push Up Cost Of Living

WASHINGTON (UPI) - The cost of living increased at an annual rate of 8.6 percent in August as spiraling retail food prices overshadowed declining mortgage interest rates, the government said today.

TODAY. Action: 2A Editorial, 4A. Avoid The Clerk: 2A Florida, 3A. Bridge: 4B Horoscope, 2B. Calendar: 8A Hospital, 4B. Classified Ads: 2B-2B, 3A. Comics: 4B Overseas, 1B. Crossword: 4B Sports, 5A-7A. Dear Abby: 1B Television, 1B. Deaths: 2A Weather, 2A. Dr. Lamb: 4B World, 2A.

Iraq Surrounds Iran Refinery?

BEIRUT, Lebanon (UPI) - The official Iraqi news agency reported today that tanks and troops have "circled and completely" cut off the strategic Iranian refinery of Abadan, the world's largest, and the port of Kharramshahr.



Kenneth N. Schenck Jr. of Russell & Axon discusses completed sewer study with Longwood commission.

U.S. Judge Could Halt Auto-Train

By DAVID M. RAZLER. A federal judge is expected to rule today on a motion to halt the Auto-Train Corp. from continuing to run trains during its reorganization.

Report To Longwood Opposes Sewer Tie-In

By JANE CASSELLBERRY. A Longwood sewage treatment facility study, which has taken 15 months to complete, recommends use of existing plants rather than tying into the Altamonte Regional Sewage Treatment facility.

Win At Bridge

WEST 4-1-0-6. EAST 2-2-2-2. SOUTH 4-3-3-2. DEALER: North. Opening lead: 10.

U.S. Judge Could Halt Auto-Train

By DAVID M. RAZLER. A federal judge is expected to rule today on a motion to halt the Auto-Train Corp. from continuing to run trains during its reorganization.

Report To Longwood Opposes Sewer Tie-In

By JANE CASSELLBERRY. A Longwood sewage treatment facility study, which has taken 15 months to complete, recommends use of existing plants rather than tying into the Altamonte Regional Sewage Treatment facility.



Kenneth N. Schenck Jr. of Russell & Axon discusses completed sewer study with Longwood commission.

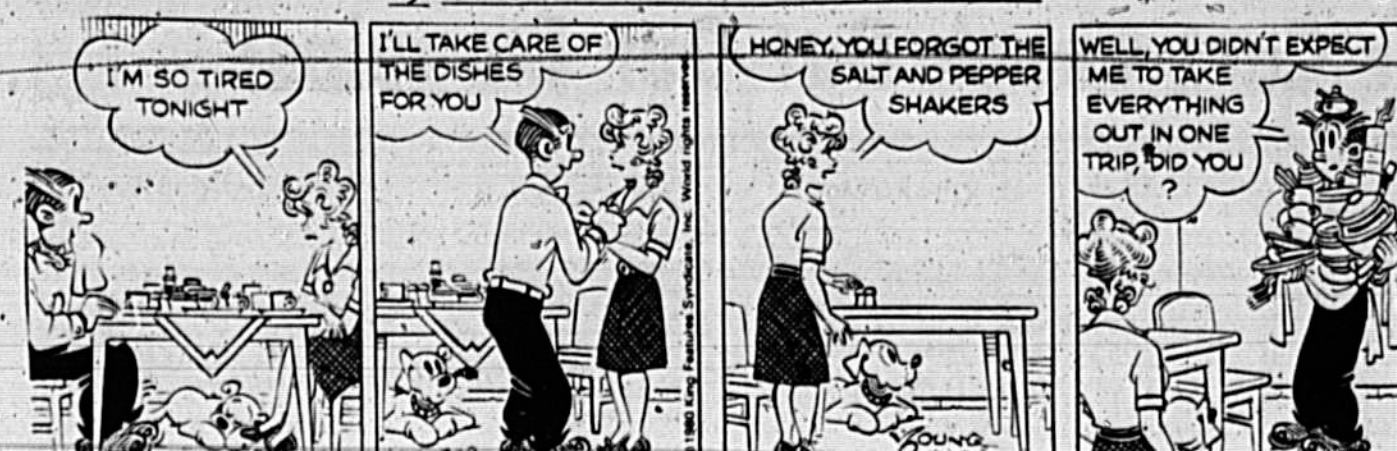






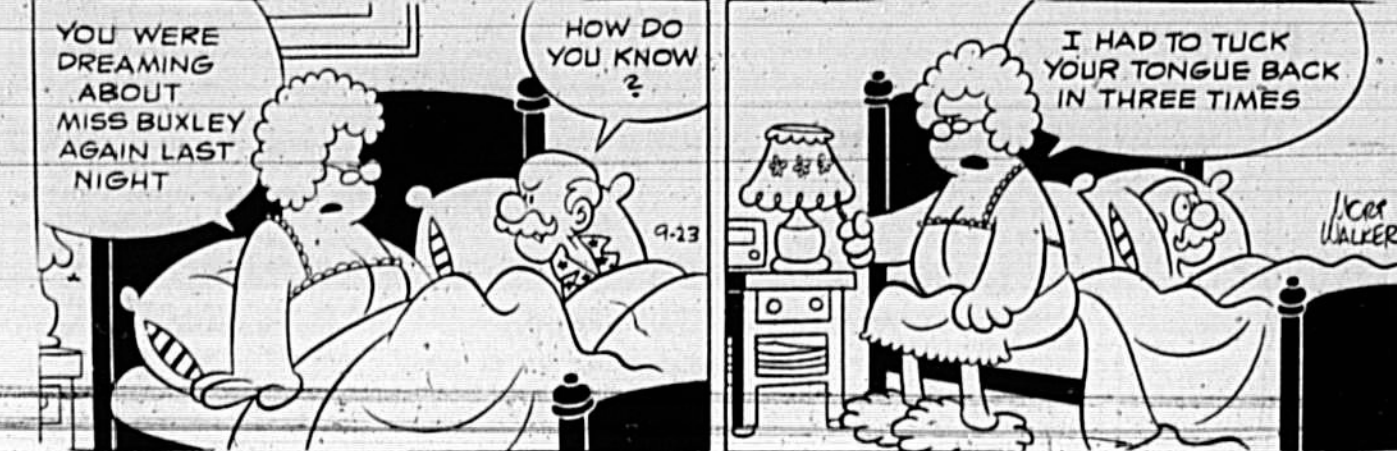






BEETLE BAILEY

by Mort Walker



THE BORN LOSER

by Art Sansom



ARCHIE

by Bob Montana



ECK & MEEK

by Howie Schneider



PRISCILLA'S POP

by Ed Sullivan



BUGS BUNNY

by Stoffel & Heimdahl



FRANK AND ERNEST

by Bob Thaves



TUMBLEWEEDS

by T. K. Ryan



Cancer Patient Can't Taste Food

DEAR DR. LAMB - I am finally convinced that for the rest of my life I'll be a lymphoma victim. After a year of chemotherapy injections...

Dr. Lamb advertisement featuring a portrait and text about cancer treatment.

DEAR DR. LAMB - I had a heart attack four years ago and my heart specialist put me on Coumadin. I've been told that after you've taken this for a period of time that it is no longer effective...

WIN AT BRIDGE advertisement with a table of numbers and bridge tips.

Crossword puzzle grid and clues.

HOROSCOPE

By BEARNICE BEDE OSOL For Wednesday, September 24, 1980 YOUR BIRTHDAY Sept. 24, 1980 Partnership matters and other associations could play a prominent role in your affairs...

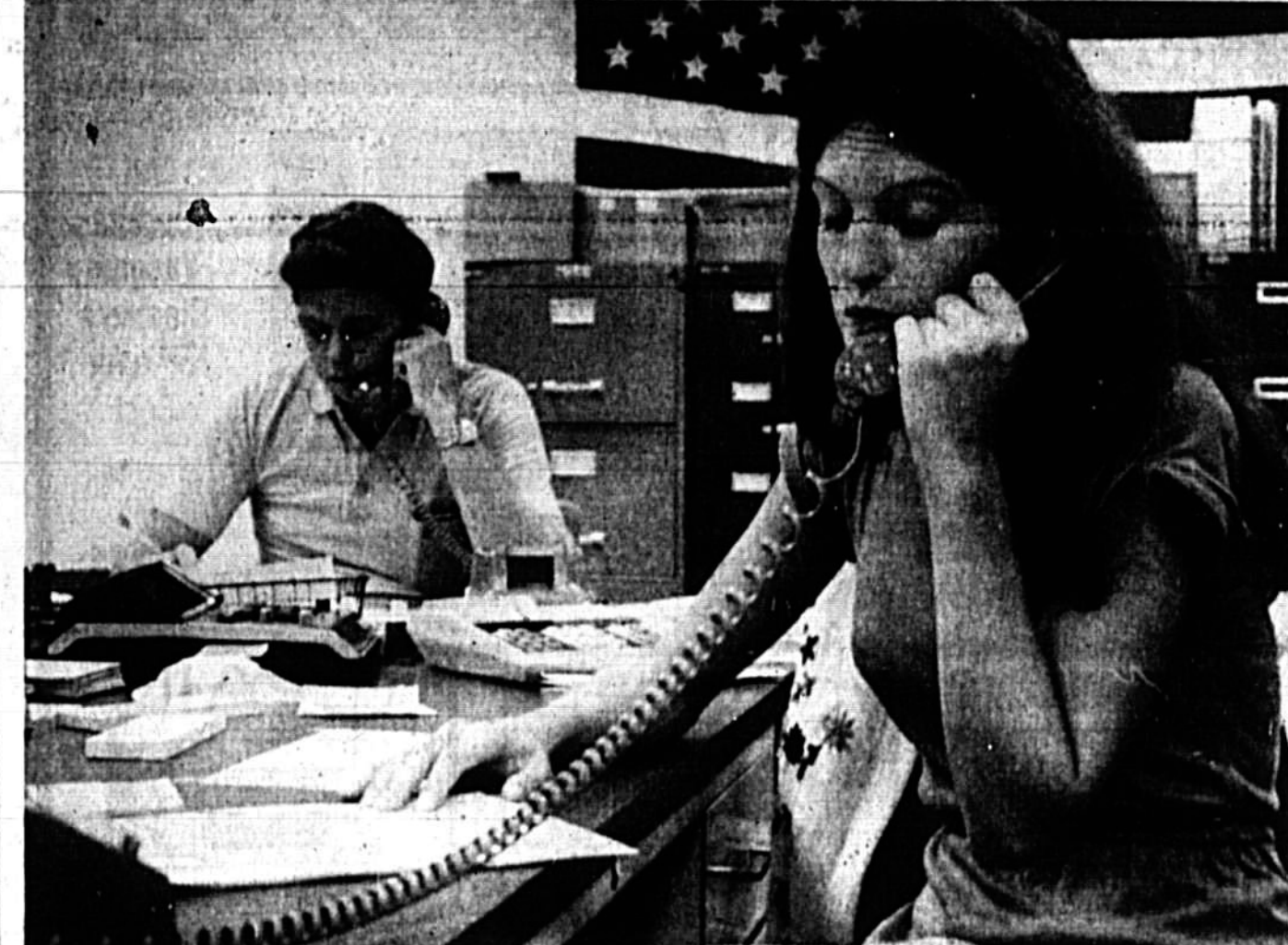
IRAQI FORCES THROUST TOWARD TEHRAN - Baghdad (UPI) - Iraqi forces lunged toward Tehran today and claimed the capture of the first town on the highway to the Iranian capital.

Iraq Thrusts Toward Tehran

Oil Production Sites Crippled In Fighting - BAGHDAD (UPI) - Iraqi forces targeted oil production facilities in the north.

Map of the Persian Gulf region showing Iraq, Iran, and surrounding countries. Includes text about U.N. Security Council calls for a cease-fire.

U.N. Security Council Calls For Cease-Fire - UNITED NATIONS (UPI) - Meeting in a crisis atmosphere late into the night, the U.N. Security Council...



Eddie Colbert and Cindl Chinell are among those employees in Seminole Property Appraiser Terry Goebel's courthouse office answering continual phone calls about increased property appraisals.

Assessment Notices Anger, Confuse Property Owners

By DONNA ESTES Herd Staff Writer The telephones in Seminole Property Appraiser Terry Goebel's courthouse office have been ringing off the hook for the past two days as property owners...

Auto-Train

Bankruptcy Judge Holds Key To Weekend Runs - Auto-Train Corp. has cleared the way to run its trains this weekend, but the future of the company remains in doubt today, a company spokesman said.

County To Fund Epilepsy Program

A school board proposal that seemed like a "real boondoggle" to Seminole County Commissioner Richard Williams, lost out Thursday to a program that will provide job training to 20 persons with epilepsy.

TODAY table of contents listing various news items like 'Cat Lady of Miami Beach Survives Attack', 'Action Reports', 'Bridge', etc.