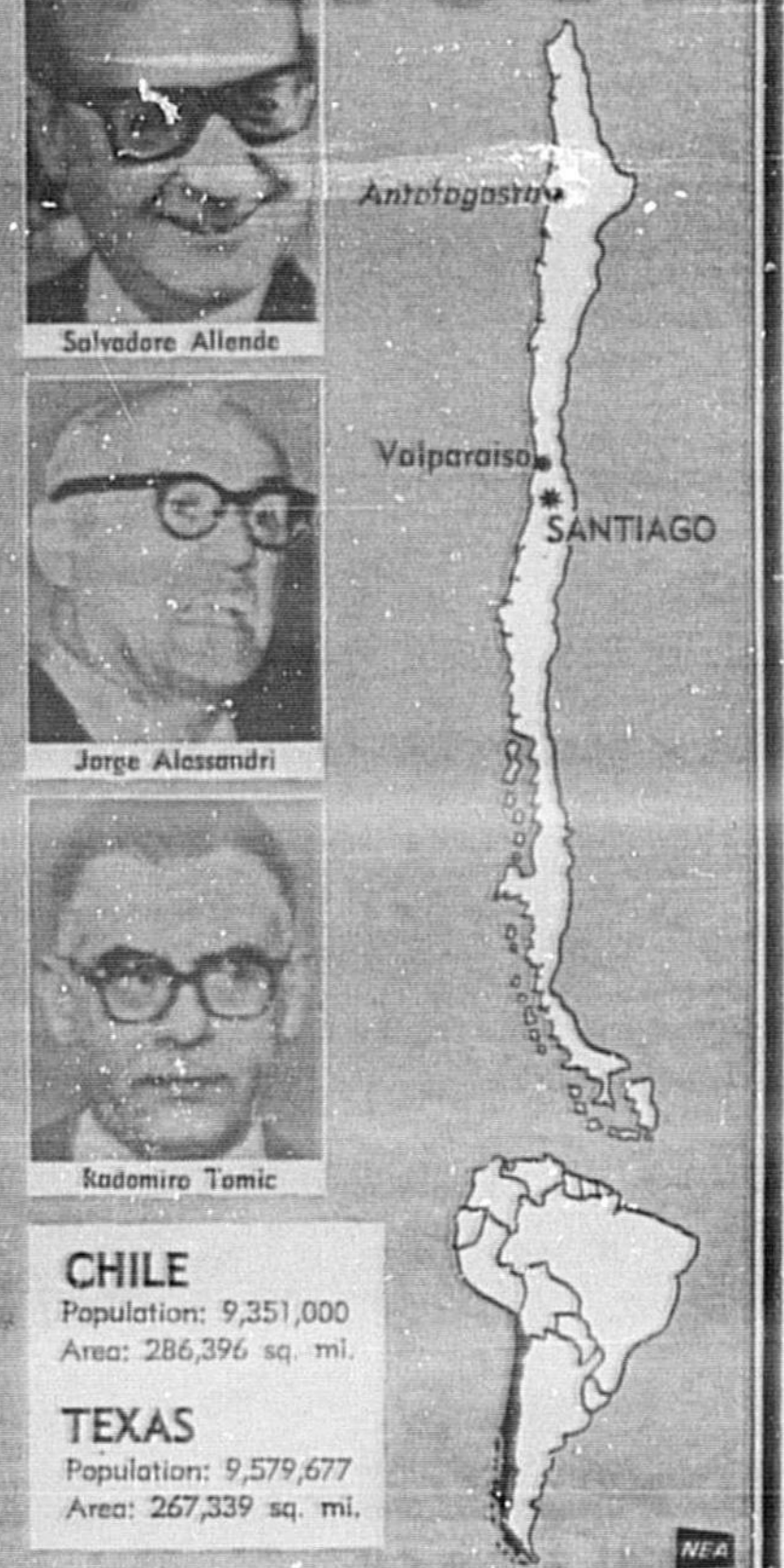




# CHILE at the crossroads



CHILE Population: 9,251,000 Area: 286,396 sq. mi. TEXAS Population: 9,579,677 Area: 267,239 sq. mi.

## Sheriff Optimistic Over Budget Appeal

Seminole County Sheriff John Polk is optimistic over his chances of getting \$40,394.56 restored to his departmental budget after an appeal hearing yesterday before a special state board at Tallahassee.

## TUESDAY BARBS

You won't catch the Old Man frittering his time away on the golf course. No sir—you'll have to catch the handball court to find him.

## FUNNY BUSINESS

SHOOT! WHAT'S WRONG? THE BRUSH IS HOT! YOU'VE GOT TO PICK UP ANOTHER ONE!

# Fighting Flares Again VCs Blast Crowded Market Place

SALGON (UPI)—The Viet Cong bombarded a crowded market place in the Mekong Delta with mortars today, killing 11 Vietnamese and wounding 42 others.

## Prejudice Growing in North

By PEGGY SIMPSON Associated Press Writer WASHINGTON (AP)—Government endorsement of housing discrimination during the first half of the century is to blame for segregation in northern schools, a congressional committee was told today.

## Strike For Equality Planned By Women

Both anniversary of final ratification of the 19th Amendment, which gave women the right to vote.

## Area Deaths

Mrs. Elizabeth P. Morris, 66, of 1406 S. Locust Ave., Sanford, died Sunday at Seminole Memorial Hospital, Boro, in Washington, D.C.

## Area Deaths

Mrs. Elizabeth P. Morris, 66, of 1406 S. Locust Ave., Sanford, died Sunday at Seminole Memorial Hospital, Boro, in Washington, D.C.

## Bomb Explosion Kills Researcher

MADISON, Wis. (UPI)—The police dispatcher received the call at 2:48 a.m. Monday, "Here, pic," the voice said, "There's a bomb in the Math Research Building on the university campus. Clear the building."

## Epidemics Loom

WASHINGTON (AP)—Government disease detectives say limited outbreaks of diphtheria, the ancient chills-killer, could spread across the United States, with ghettos especially vulnerable.

## People In The News

HONG KONG (AP)—Roman Catholic Bishop James Walsh, who was freed by the Red Chinese July 16 after 12 years in a Communist prison, was in New York Sunday for an audience with Pope Paul VI in Rome.

## Area Deaths

Mrs. Elizabeth P. Morris, 66, of 1406 S. Locust Ave., Sanford, died Sunday at Seminole Memorial Hospital, Boro, in Washington, D.C.

## Bomb Explosion Kills Researcher

MADISON, Wis. (UPI)—The police dispatcher received the call at 2:48 a.m. Monday, "Here, pic," the voice said, "There's a bomb in the Math Research Building on the university campus. Clear the building."

## Epidemics Loom

WASHINGTON (AP)—Government disease detectives say limited outbreaks of diphtheria, the ancient chills-killer, could spread across the United States, with ghettos especially vulnerable.

## Area Deaths

Mrs. Elizabeth P. Morris, 66, of 1406 S. Locust Ave., Sanford, died Sunday at Seminole Memorial Hospital, Boro, in Washington, D.C.

## Area Deaths

Mrs. Elizabeth P. Morris, 66, of 1406 S. Locust Ave., Sanford, died Sunday at Seminole Memorial Hospital, Boro, in Washington, D.C.

## Commission Pops Question Zoo Talk Rolls On . . . And On . . .

The relocation of the Sanford Municipal Zoo has a habit of cropping up at nearly every city commission meeting and last night was no exception.

## Advance Leases Discussed

Continued From Page 1 of the authority. Others do not agree. The estimated cost of the building and the improvements to be built for PESCO is \$175,000.

## Commission Considers Reduction

By MARION BETHEA Reduction of one-third of a mill in the county's '70-71 budget was considered at a meeting of the County Commission this morning.

## Area Deaths

Mrs. Elizabeth P. Morris, 66, of 1406 S. Locust Ave., Sanford, died Sunday at Seminole Memorial Hospital, Boro, in Washington, D.C.

## Area Deaths

Mrs. Elizabeth P. Morris, 66, of 1406 S. Locust Ave., Sanford, died Sunday at Seminole Memorial Hospital, Boro, in Washington, D.C.



BRIDGED-IN is this vehicle which smashed through the Osteen Bridge railing on SR 415 early Sunday morning.

## Commission Considers Reduction

By MARION BETHEA Reduction of one-third of a mill in the county's '70-71 budget was considered at a meeting of the County Commission this morning.

## Area Deaths

Mrs. Elizabeth P. Morris, 66, of 1406 S. Locust Ave., Sanford, died Sunday at Seminole Memorial Hospital, Boro, in Washington, D.C.

## Area Deaths

Mrs. Elizabeth P. Morris, 66, of 1406 S. Locust Ave., Sanford, died Sunday at Seminole Memorial Hospital, Boro, in Washington, D.C.

## Area Deaths

Mrs. Elizabeth P. Morris, 66, of 1406 S. Locust Ave., Sanford, died Sunday at Seminole Memorial Hospital, Boro, in Washington, D.C.

## Commission Pops Question Zoo Talk Rolls On . . . And On . . .

The relocation of the Sanford Municipal Zoo has a habit of cropping up at nearly every city commission meeting and last night was no exception.

## Advance Leases Discussed

Continued From Page 1 of the authority. Others do not agree. The estimated cost of the building and the improvements to be built for PESCO is \$175,000.

## Commission Considers Reduction

By MARION BETHEA Reduction of one-third of a mill in the county's '70-71 budget was considered at a meeting of the County Commission this morning.

## Area Deaths

Mrs. Elizabeth P. Morris, 66, of 1406 S. Locust Ave., Sanford, died Sunday at Seminole Memorial Hospital, Boro, in Washington, D.C.

## Area Deaths

Mrs. Elizabeth P. Morris, 66, of 1406 S. Locust Ave., Sanford, died Sunday at Seminole Memorial Hospital, Boro, in Washington, D.C.

ALWAYS PRESCRIPTIONS AT DISCOUNT PRICES FAUST'S DRUG STORE

KARNS INSURANCE AGENCY Where Quality Sells & Service Tells 104 E. Commercial Dial 322-5762

IMPORTANT TRAVEL NEWS! MORE SERVICE TO FLORIDA CITIES 4 Trips Daily to Boca Raton, Ft. Lauderdale, Miami, Lakeland, Tampa, St. Petersburg, Sarasota, Ft. Myers.

Trailways Bus System. Easiest travel on earth. FROM SANFORD TO: LAKELAND \$3.30, TAMPA \$4.45, ST. PETERSBURG \$5.20, FT. MYERS \$7.50, DAYTONA BEACH \$1.50, WEST PALM BEACH \$4.70.

Coolerator. MAKES HOME THE BEST PLACE TO ESCAPE THE HEAT. CUSTOM Room Air Conditioners for Living Rooms, Family Rooms, Master Bedrooms.

Trailways Bus System. Easiest travel on earth. FROM SANFORD TO: LAKELAND \$3.30, TAMPA \$4.45, ST. PETERSBURG \$5.20, FT. MYERS \$7.50, DAYTONA BEACH \$1.50, WEST PALM BEACH \$4.70.

Has a salesperson been nice to you lately? WE HOPE SO BECAUSE WE WOULD LIKE TO ENCOURAGE COURTESY AND HELPFULNESS IN OUR STORES. TO DO THIS WE'RE SETTING UP A MONTHLY COURTESY AWARD.

For the August Courtesy Award. Nominate \_\_\_\_\_ of \_\_\_\_\_ Reasons or Comments \_\_\_\_\_ Signed \_\_\_\_\_ Address \_\_\_\_\_







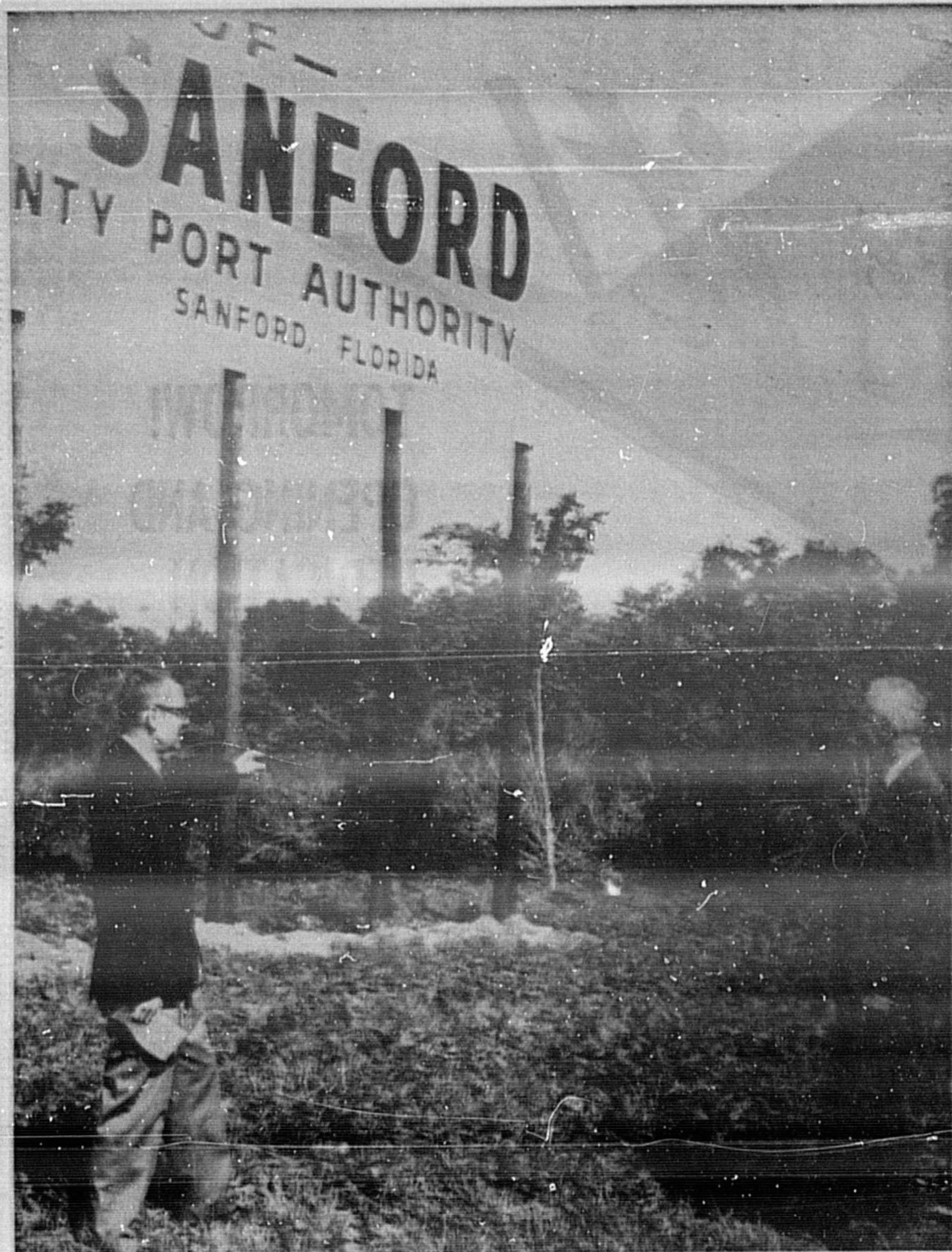












THE SIGN WAS UP, and now it looked like the Port of Sanford might really become a reality. It was four summers ago that Francis Roumillat, the chairman of the Seminole County Port Authority, and Andrew Carraway, the vice chairman who later became chairman, admired that sign. Work was actually begun in June of 1969. Roumillat was a member of the Chamber of Commerce committee which considered the feasibility of the Port.

## Port Is Important Link

By CHARNER LEONE  
 What is the Port of Sanford?  
 The Port, located on the St. Johns River at Lake Monroe in Sanford, will be a terminal for barges. It will serve as an important link in the transportation of petroleum, steel, scrap, fertilizer, grain, or any such product with the important markets inland.  
 It is a part of the Intracoastal Waterway system for the state of Florida, and someday will become a feeder for the Cross Florida Barge Canal.  
 The Port will be a means of servicing the ever increasing demands of a tremendous industrial growth and population explosion.  
 The Seminole County Port Authority (SCOPA) is the agency which represents the Port of Sanford. They have just realized the necessity of a barge port in Central Florida.  
 It is an authority that will play a large part in the economic and industrial growth of this area.



THIS EARLY VIEW of the Port of Sanford shows the burning away of trees that made room for the barge facility which opens Wednesday. Located at the mouth of Lake Monroe, where the St. Johns River flows in, the scene would now show large barge terminals and storage spaces.

VISITORS to the Port of Sanford are greeted by this sign which stands at the entrance. Dedication of the Port of Sanford is slated to be held this Wednesday at 11:30 a.m. with Lt. Governor Ray Osborne slated to be on hand. The Port of Sanford is the only inland barge port in the state of Florida.



### From Port Of Sanford

## Central Florida To Reap Benefits

"All of Central Florida will benefit from the Port of Sanford," stated Harold Kastner, newly appointed chairman of the Seminole County Port Authority (SCOPA).  
 The opening of the Port tomorrow is the culmination of five years of efforts on his part, as it is for the others on SCOPA.  
 Other prospects include Merry Brick Company and Gulf Processors, said Kastner.  
 "We'll bring in paper, and send out citrus," he said. "And we'll expand upon this area."  
 "We'll bring in all kinds of building materials," the chairman said. He mentioned the expanding market for these products by Disneyworld, and other large industries in the area.  
 Kastner spoke with pride as he outlined briefly the scope of the Port of Sanford.  
 "Port Everglades Steel Company of Miami, Tampa, and Jacksonville want to locate here," he said. They are now actively seeking a five year lease with SCOPA, and want an option for five more years.  
 The import of hay is another prospect, he said. The cattle market in Seminole County is an important industry. The county ranks among the top ten in the state in the industry.  
 Brick and clay products, liquid fertilizer, paper products—it is very likely that all of these products will come through the Port of Sanford in the not-too-distant future, said Kastner.  
 The following firms have expressed a definite interest in the use of the Port of Sanford: Anco Shipping, Bethlehem Steel, Inc., Boise Cascade Newsprint, and the Florida Barge Lines.  
 Also, Gulf Steel Corporation, Gulf Stream Shipping Corporation, Merry Brick and Southern Petroleum.  
 Inquiries are still coming in. Negotiations are underway with these companies.



F. ROUMILLAT, JR. First Chairman



JAMES RYAN Administrator

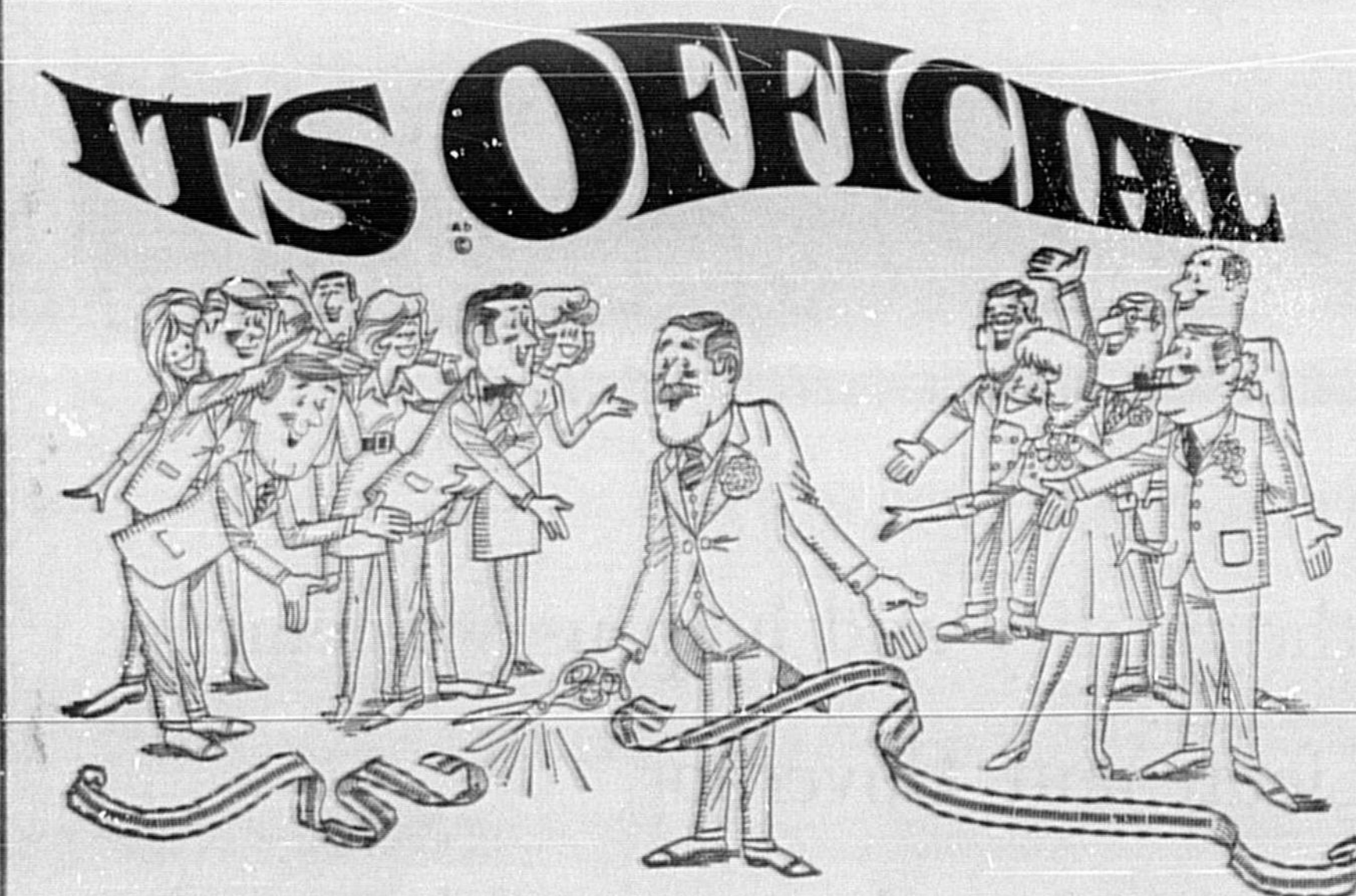
### According To President, 'Peacefully-Orderly'

By TOM LAWRENCE  
 ATLANTA (UPI) — Sixteen years after the original U.S. Supreme Court mandate, the South's schools will yield to massive integration this fall, and it probably will be accomplished, in the President's words, "peacefully and orderly."  
 The original desegregation order came in 1954 and at the time, 23 Negroes across the South were attending white schools. Even by 1964, that percentage had risen to only 2.5.  
 Now, according to statistics compiled by the U.S. Department of Health, Education and Welfare, only "nine or ten" of the 2,697 school districts in the 11 old Confederate states have not complied with federal guidelines or been sued for noncompliance.  
 A survey of the South indicates little likelihood of systems will fall into the sole possession of blacks, and the most emotional issue will be busting to achieve racial balance.  
 Three Trouble Spots Cited  
 There are some potential trouble spots, including Watson Chapel, Ark., Darlington, Conn., S.C., and Longview, Tex.  
 In Watson Chapel, the school board has said it may go to jail rather than submit to HEW guidelines. Board attorney John Norman Warnock, an American Independent party candidate for attorney general, said last week, "They're ready to go."  
 In Darlington County, tension lingered from an incident last May in which parents of white students at Lamar School overturned school buses to defy court-ordered mid-term integration.  
 In Longview, 32 school buses are still being repaired after a bomb exploded among them on July 4.  
 Most school officials appear to agree with Louisiana state School superintendent William Dodd.  
 "We'll Always Have Trouble"  
 "We'll always have some problems as far as desegregation is concerned," he said, "but I don't think that there will be any physical violence of any kind."  
 Among those other problems are the rapid growth of private schools and the corresponding take over by blacks of whole public school systems that were all or predominantly white.

### Port Nears Reality

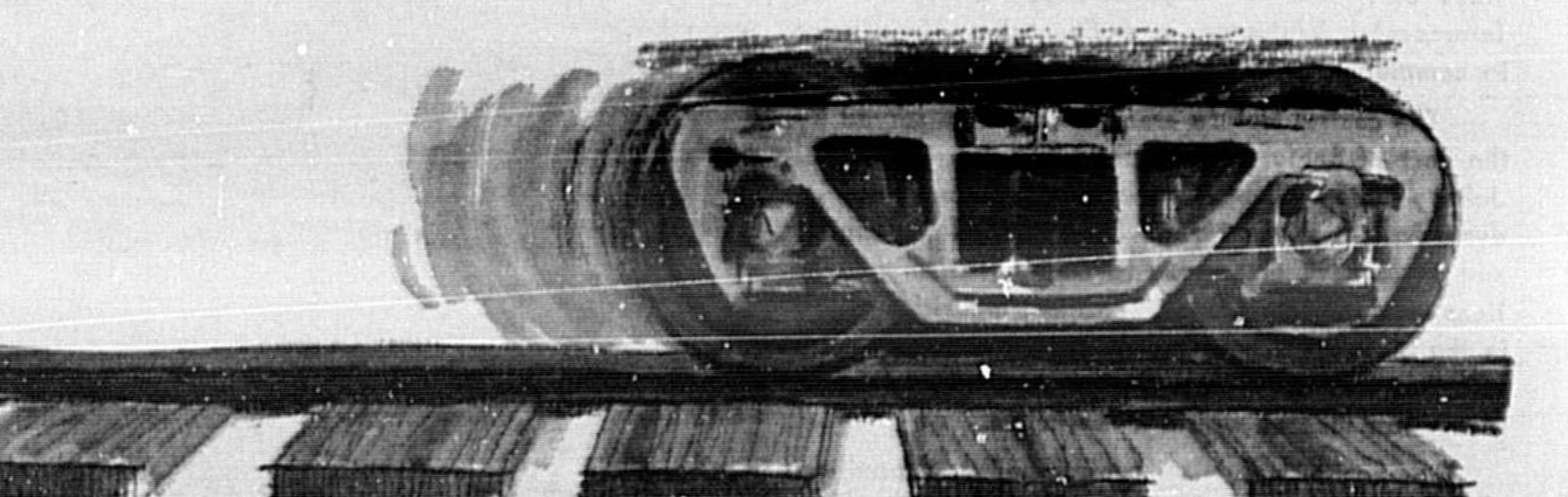
## 'You've Come A Long Way, Baby!!'

By GARY TAYLOR  
 The first step, and a giant one, that paved the way for the Port of Sanford, came in February, 1966 when the Seminole County Port Authority authorized the purchase of the land on which the port is located.  
 It was the first step toward a goal that will be reached this week when the port opens. It was 4 1/2 years ago that the Port of Sanford, came in February, 1966 when the Seminole County Port Authority authorized the purchase of the land on which the port is located.  
 The year 1969 saw construction begin at last. Tug boats pulled barges loaded with materials and supplies to the construction site where workers were busy as a swarm of bees.  
 By mid-March, 1970 the port was 45% complete and construction was barreling toward an June 22, 1970 finish. It was a long time that work was bogged, mainly due to financial problems.  
 It has been years of planning and long meetings for the members of the Seminole County Port Authority and for the administrator, James Ryan. It will all be rewarded! Wednesday.



**IT'S OFFICIAL**  
**THE PORT OF SANFORD**  
 is ready to go and we're really glad to have it. We welcome the PORT and the new business it will bring to the Seminole County area.

**The SANFORD ATLANTIC BANK**  
 First and Park  
 Sanford, Florida



THE WHEELS THAT MOVE THE SOUTHEAST.

## The Seaboard Coast Line Railroad Congratulates The Citizens of Sanford on The Opening and Dedication of the Port of Sanford

This significant step is an example of the continuing progress and forward thinking of the citizens of this area.

The Port has versatile facilities. Ryan added, for lumber and paper storage, and citrus and citrus by-products storage and handling.  
**Plastic Coffins**  
 GLENEALY, Ireland (AP) — An Irishman who feels that in today's "plastic society" even wooden coffins are out of date has applied for a world patent for the manufacture of rot-proof, hygienic, unbreakable plastic coffins. Des Kinsella says the coffins are ideal for transporting bodies by air and sea because they are so light. The coffin lid can be made of transparent material, if desired.



WE WERE A PART IN THE CONSTRUCTION OF THE FACILITIES AT THE

## Port of Sanford

WE INSTALLED THE PLUMBING AND FIXTURES

### Wall PLUMBING — HEATING AIR CONDITIONING

FREE ESTIMATES BY OUR ENGINEERS  
 1007 S. SANFORD AVE. SANFORD 322-6562

It Has Been A Pleasure To Be Part Of The Team Who Made Sanford A Gateway To The Ocean.

**WELCOME PORT OF SANFORD**

**RANDALL ELECTRIC**  
 112 S. MAGNOLIA 322-0915

**Seminole County Residents Earn Daily Interest on Passbook Savings Accounts**

Interest paid from date of deposit to date of withdrawal

**NO MINIMUMS— ADD ANY AMOUNT YOU WISH— ANY TIME YOU WISH— AND STILL EARN!**

Now you have the full convenience of saving any time you like!  
 No more deadlines to meet!  
 You earn interest on the actual time your money is on deposit.

ALL ACCOUNTS INSURED TO \$20,000 BY THE FSLIC

We transfer your account from across the street or nation FREE ...

**first federal savings & loan association of seminole county**

MAIN OFFICE: 312 W. FIRST ST. SANFORD, FLA. • BRANCH OFFICE: SANFORD PLAZA SANFORD, FLA.



AERIAL VIEW of Port of Sanford as captured by Lorran R. Meares, photographer of Photo-Flyers, shows a dredge pumping in front of the port docks, which are north-south in direction. Located at the rear of the facility, which is nearing completion, is a crane hoisted high above workmen's cars in the background. The barge ports' front is looking west and the railroad spur is shown at the extreme east. Built on what was a 120 acre swamp west of Sanford on the St. Johns River, shown at top of picture, the facility was let to Weiss Construction Company for \$1,787,000 or lowest bid, to be financed with grants from Economic Development Administration (EDA), funds from state's race track proceeds and taxes. An \$870,000 loan from U.S. Department of Housing and Urban Development (HUD) was also approved for the facility.

### Started As Committee

## Many Have Helped Make Sanford Port

By BILL SCOTT  
The guiding hands that eventually brought about the just completed Port of Sanford on the St. Johns River have been many in the past five years. What started out as just a committee from the Seminole Chamber of Commerce in 1964 soon became the first authority in 1965 when then Gov. Haydon Burns appointed Francis Rouni-Hat, Jr., Andrew Carraway, John Fitzpatrick, Byron Kimbrell, James Colbert, Karl Shuman and B. F. Wheeler Jr. to the first board.

Harold Kastner, vice chairman, was selected chairman this past week, after serving since June as temporary chairman until new authority appointments were made by Gov. Claude Kirk.



LT. GOV. OSBORNE... main speaker

Authority members terms were for four years, but the year to become the first port administrator. He was succeeded by Carraway for the remainder of the year, to be elected again to the post for another year in 1967. Lee P. Moore was selected as chairman in 1968 for one year and he remained until his term expired in 1969. Moore's replacement was Ellis-orth Bassett, who resigned in June, 1970.

Political Chaos  
FRANKFORT, Ky. (AP) — Kentucky's political situation was in turmoil at the turn of the century.

William S. Taylor was sworn in as the state's 34th governor on Dec. 17, 1899, but was unseated Jan. 21, 1901, in an election contest which declared William Goebel the winner.

However, Goebel died from an assassin's bullet four days later and J. C. W. Beckham succeeded to the office.

We erected the prefabricated steel structure for the terminal warehouse at the  
**PORT OF SANFORD**  
R. W. Jones Construction Co.  
P.O. Drawer J  
Fern Park, Florida 32730

## Another "Impossible Dream!"

# The Port of Sanford opens tomorrow!

Our sincere congratulations to all whose gifts of valuable time and undisciplined effort have made this step in the growth of Seminole County a reality.

**US BANK** UNITED STATE BANK of Seminole... SANFORD, FLORIDA  
MOST RAPIDLY GROWING BANK IN THIS AREA!

We salute the opening of the  
**PORT OF SANFORD**  
We're proud to have had a part in its construction...  
**STRUCTURAL CONCRETE FORMING**  
**Donro Industries, Inc.**  
1719 S. Division St.  
Orlando, Florida 32805

**The Sanford Herald**  
Wednesday, August 26, 1970 — Sanford, Florida 32771  
62nd Year, No. 261 Price 10 Cents

## Youth Arrested, Assault Charge

A 20-year-old Sanford youth has been arrested and charged with fondling a nine-year-old girl.  
Raymond Gaines, 622 East 8th Street, was arrested yesterday by Constable Fred Galloway on a warrant taken by the parents of the girl charging lewd and lascivious assault upon a child.  
Gaines was placed in the county jail in lieu of \$5,000 bond.



By JOHN A. SPOLSKI  
Tell it like it is, John... no more and no less. This one is about the purported pay raise of our legislative delegation.

## WEDNESDAY Headlines Inside THE HERALD

**World News**  
Vice President Spiro T. Agnew braves drizzle and fog to visit U.S. troops four miles from North Korea. He tells them not to listen to reports from home about "a few opportunists who may wish to see us bug out." (Page 1B)

**Around The Nation**  
Women liberationists demand equal rights with today's nationwide "Strike for Equality," timed to coincide with the 50th anniversary of adoption of the 19th amendment giving women the right to vote. (Page 1B)

**Sports World Thrillers**  
Rick Sires shows DeLand Sun Caps he still remembers Conry Park. (Page 6A)  
Ray Daniel slated to speak to Kiwanis Club next week. (Page 6A)

**Statewide Developments**  
Dade County school officials work feverishly to implement a desegregation order but Broward County gets a deadline postponement after both school districts are denied an immediate hearing by the U.S. Supreme Court. (Page 5A)

**Tag Rush Subsidies**  
As the tag rush subsides the Seminole County Tax Collector, Troy Ray Jr., girls himself for the next onslaught — the renewal of occupational and retail store licenses.

**Daily Features**  
Area deaths... 2A Entertainment... 12B  
Bridge... 12B Horoscope... 12B  
Calendar... 2A Hospital notes... 2A  
Classified ads... 3A-31A Pass It On... 2A  
Comics... 12B-13B Public notices... 10A  
Crossword puzzle... 13B Society... 8A-9A  
Dr. Crane... 12B Sports... 6A-7A  
Dear Abby... 12B TV... 12B  
Editorial comment... 4A Wall St. Chart... 6A

### Field For Oviedo

## Board Discusses Leasing Problems

By BILL SCOTT  
Seminole County School Board at last night's meeting involved themselves with problems encountered in setting-up a lease agreement with Oviedo Athletic Association over the leasing of a field for football games and approving a food service policy for schools.  
Regarding the lunch program, it was agreed by the board that new federal regulations governing the free and reduced price lunches at school would have to be adopted to conform with Public Law 91-248.

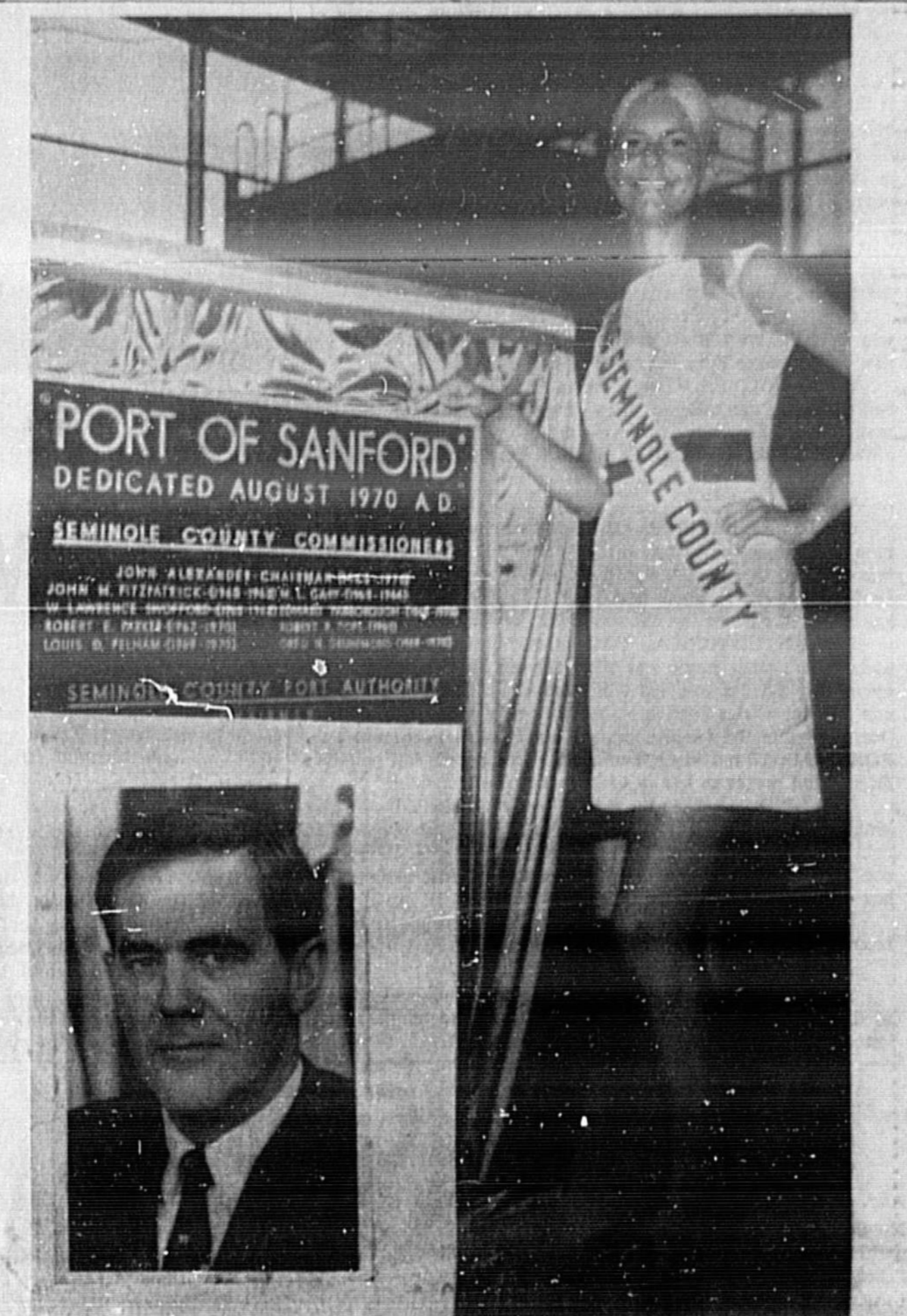
Charlotte Whitmore, school food service administrator, said the major change is the graduated scale of income in comparison with the number of persons living in the household.  
This new policy utilizes the National Income Poverty Guidelines and places the maximum charge county can make for reduced price lunches at 20 cents for all students in any school.

Price for this sandwich and orange juice will be 25 cents; extra milk can be bought for additional 10 cents.  
Jack Bratton, Oviedo Athletic Association president, appeared at the meeting in an effort to resolve contractual problems in getting a field owned by the Oviedo Masonic Lodge but used by the school for football games.

Price for this sandwich and orange juice will be 25 cents; extra milk can be bought for additional 10 cents.  
Jack Bratton, Oviedo Athletic Association president, appeared at the meeting in an effort to resolve contractual problems in getting a field owned by the Oviedo Masonic Lodge but used by the school for football games.

## County Faces Court; Named In Complaint

By MARION BETHA  
A complaint for a temporary restraining order and injunction against Seminole County is being heard this morning at Orlando. The complaint is also lodged against Orange County by Katherine Gillespie, a resident of Orange County.  
The hearing stems from the allegation by the complainant that Fred B. Hagan, a candidate for the Florida House of Representatives, was a member of the East Central Regional Planning Council at the time of his qualifying for office, and therefore was a public office holder. Recent changes in the election laws state that "any individual who holds an elective or appointive office may not qualify for another public office unless first tendering his resignation, and that the resignation be made not less than 10 days prior to the first day of qualifying."



MISS SEMINOLE COUNTY Becky Thornell unveils the Port of Sanford plaque which was dedicated today. Featured speaker for the event was (inset) Lt. Gov. Ray Osborne. (Related story on Page 2A).

## County Commission Gets Low Bid On Courthouse

County Commissioners yesterday accepted the low bid of Greenhut Construction Company of Pensacola for the Courthouse and jail at a figure of \$4,134,000.

It had been stated that the contractor would delete \$200,000 from the figure if the jail addition were omitted as had been discussed. Also deleting \$248,000 for the prison equipment, it was estimated that the figure would represent \$3,686,000.

Commissioners accepted the bid with the proviso that the deletion of the proposed jail addition, at a reduced cost figure to be acceptable to the architect and County Commission through a change order, and a further proviso that the contract include a starting date set by the commission at no later than Dec. 1, 1970.

**PANELING** Stock-up Now!  
**SPECIAL 3.99 UP** 4x8 SHEETS  
**GREGORY LUMBER**  
WELCOME  
322-4000  
121 S. MAPLE AVE.

**today's FUNNY**  
TOO MUCH HENPECKING MAKES HUSBANDS CHICKEN  
Today's FUNNY will pay \$1.00 for each copy sold. Thursday only. \$1.00 per copy. 1,000 West 17th St., Sanford, Fla. 32771.