



Seminole Herald

FRIDAY
April 28, 2000
92nd Year, No. 177
(407) 322-2611
Sanford, FL
Price 35¢

Serving
Sanford, Casselberry,
Lake Mary, Longwood,
Oviedo, Winter Springs
and Seminole County
Since 1908



Weather
SUNNY
High: 83
Low: 68
2A



Seminole wins
4th straight
District Title
Page 1B



Church builds
new family
life center
Page 4A

Briefly

Altamonte Springs Commission meets

The Altamonte Springs City Commission will meet Tuesday, May 2 beginning at 7 p.m. Items on the agenda include a change in the cable television franchise, abandonment of four utility easements in CenterPointe, and an increase in ambulance transport service rates for non-Altamonte Springs City residents.

The meeting will be held in the commission chambers, 255 Newburyport Avenue, Altamonte Springs.

Expressway board meets May 9

The Seminole County Expressway Authority will meet Tuesday, May 9, beginning at 4 p.m., at Seminole County Services Building, 1101 E. First Street, Sanford. The general subject matter is the proposed GreeneWay in Seminole County.

For additional information phone the Authority at 407-663-5740.

Today is ...

Friday, April 28, 2000
Today is the 119th day of 2000
and the 40th day of spring

TODAY'S HISTORY: On this day in 1789, sailors aboard H.M.S. Bounty mutinied. On this day in 1914, a mining accident claimed 181 lives at Eccles, W.Va. On this day in 1947, Thor Heyerdahl and six companions set sail from Peru aboard the Kon-Tiki, a raft made of balsa wood. They reached their destination, Polynesia, 101 days later.

TODAY'S BIRTHDAYS: James Monroe (1758-1831), U.S. president; Lionel Barrymore (1878-1954), actor; Harper Lee (1926-), writer, is 74; James A. Baker III (1930-), U.S. secretary of state, is 70; Jack Nicholson (1937-), actor, is 63; Ann-Margret (1941-), actress, is 59; Jay Leno (1950-), talk-show host, is 50; Kim Gordon (1953-), musician, is 47.

TODAY'S SPORTS: On this day in 1961, Milwaukee's Warren Spahn pitched a no-hitter against the Giants. Milwaukee won 1-0.

TODAY'S QUOTE: "The American continents... are henceforth not to be considered as subjects for future colonization by any European powers."
James Monroe

TODAY'S MOON: Between last quarter (April 26) and new moon (May 4).

© 2000 NEWSPAPER ENTERPRISE ASSN.

Index

Classified ... 4B-5B
Comics ... 6B
Crossword ... 5B
Horoscope ... 6B
Obituaries ... 3A
Police Log ... 3A
Sports ... 1B-2B

Schools may begin later in day

By Bill Kerna
Staff Writer

SANFORD — Students in Seminole County may receive extra time to sleep next school year.

The school day may begin 15 minutes later in Seminole County next school year, because of concerns about students walking to school in the dark. However, concerns about students walking home later in the day may make the proposal controversial.

School Board member Larry Furlong proposed during Tuesday's regular Board meeting that the school day should start

Furlong, Bauer suggest classes start 15 minutes later for safety

15 minutes later for elementary, middle and high schools. Diane Bauer also said she supports the proposal.

"We have students coming to school in the dark," Furlong said. "This is a problem waiting to happen. In other counties, this is a serious issue. We need to look at it."

The school day for high school students begins at 7:20 a.m., meaning that some students wait for the school bus or walk to school before the sun rises.

Middle and elementary schools start classes later in the morning. In fact, middle schools end the school day at 3:50 p.m., four days a week, and one hour ear-

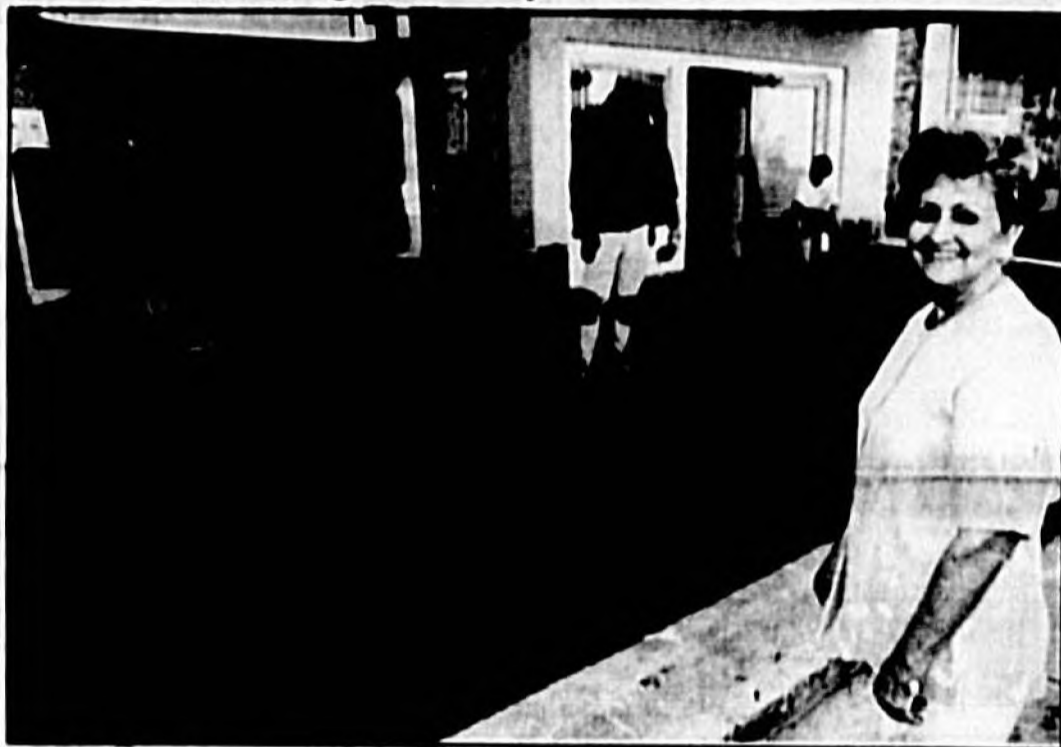
lier on Wednesday. Pushing the end of the school day back 15 minutes would mean middle school students would be dismissed closer to evening rush hours.

"There would be a concern about rush hour traffic after school," said Jean Johnson, director of transportation for the school district.

The change would be necessary across the board to accommodate bus schedules. It would not be more expensive for the school district to provide busing if school starts 15 minutes later for elementary, middle and high schools, Johnson said.

See Schools, Page 6A

Rolling out the green carpet



Helen Stairs, right, watches as workers measure and cut carpet to install at the Helen Stairs Theatre. The facility, formerly known as The Ritz Theatre, is in the final stages of a \$1.9 million renovation project. A grand opening and dedication for the theater is Saturday, May 6, featuring Tony Award-winning singer/actress Melba Moore. For more information, call 407-321-8111.

Local students selected for Youth leadership program

From staff reports

Two of the 30 students selected statewide as delegates for the Florida Youth Leadership Forum (YLF) in Tallahassee in July, were listed as Seminole County residents.

They are Ashley Allen, a sophomore at Lake Brantley High School, and Lisa King, a junior at Winter Springs High School.

The selections were made by The Able Trust, also known as the Florida Governor's Alliance for the Employment of Citizens

with Disabilities. The YLF is a statewide leadership conference for high school juniors and seniors with disabilities. Students were selected for demonstrating leadership potential. They will represent the state in terms of geography, gender, ethnicity and types of disabilities.

Ashley Allen was selected for her role as Lake Brantley's Student Council Vice President. She also enjoys working with her high school yearbook staff and scorekeeping for the volleyball and basketball teams. Outside of

school, she participates in different community programs including March of Dimes and Special Olympics. After appearing in an Arnold Palmer commercial at a younger age, her life long dream has been to become an actress. She hopes to attend Florida State University and is considering a major in either social work or healthcare.

In Winter Springs, through membership in her high school's Interact Club, Lisa King is involved in community activities

See Students, Page 6A

State investigates race-based insurance rate irregularities

From staff reports

TALLAHASSEE — State insurance regulators report uncovering evidence that thousands of African-American policyholders in Florida are paying more than whites for the same insurance coverage.

Thursday, the department filed an order accusing American General Life and Accident Insurance Company with racially discriminatory practices.

State Treasurer and Insurance Commissioner Bill Nelson filed a cease-and-desist order directing American General to stop

collecting higher premiums from African Americans based solely on their race. The complaint also orders the Nashville, Tennessee-based insurer to take "corrective action" that could include refunds of the racially discriminatory portion of premiums paid by affected policyholders. Details of a corrective action plan must be submitted to regulators by the company within 20 days.

The complaint came to light following an ongoing investigation launched last year by the insurance commissioner's office into the sale of industrial life, or so-called burial insurance, a

small-value policy sold largely to minority and low-income consumers. While most insurance companies say they don't sell such policies anymore, in the past, some charged different rates based on race. Such pricing was generally abandoned on new sales in the 1960s but some companies never eliminated or reduced the higher premiums charged to African Americans who purchased policies prior to the change according to Nelson.

With American General alone, he said, there may be as many

See Insurance, Page 6A

Longwood mayor proposes new city sports park

By Bill Kerna
Staff Writer

LONGWOOD — A new community park may be built in Longwood.

Mayor Paul Lovstrand is proposing that the Longwood City Commission consider purchasing a 7.5 acre parcel of land to be used as a community park. Lovstrand is requesting that the City Commission consider a budget amendment of \$150,000 to purchase a 7.5 acre property located at the corner of 12th Street and Lommler Street for use as a community park.

Lovstrand said that the park could contain soccer fields and possibly a senior center. The land has been for sale by Janice Davis of Casselberry since April 20.

"In the short term, we have a shortage of park space and a need for soccer fields,"

Lovstrand said. "In the long term, we may also need a senior center. The land is there, and it's available at a good price."

Lovstrand proposes that purchasing the land and constructing a park can be funded in stages as part of the city's five-year capital plan.

Because some neighbors may be concerned about lights being installed on a soccer field, Lovstrand said that it is possible a new youth soccer field may not need lights.

In addition to purchasing the land, the city may need to buy rights of way or create a road for entrance into the proposed park. The current main entrance into the land, located along Lommler Street, only has a right of way of 25-feet.

However, the city's Master Plan for Parks is not done. The

See Park, Page 6A

A surprise pet

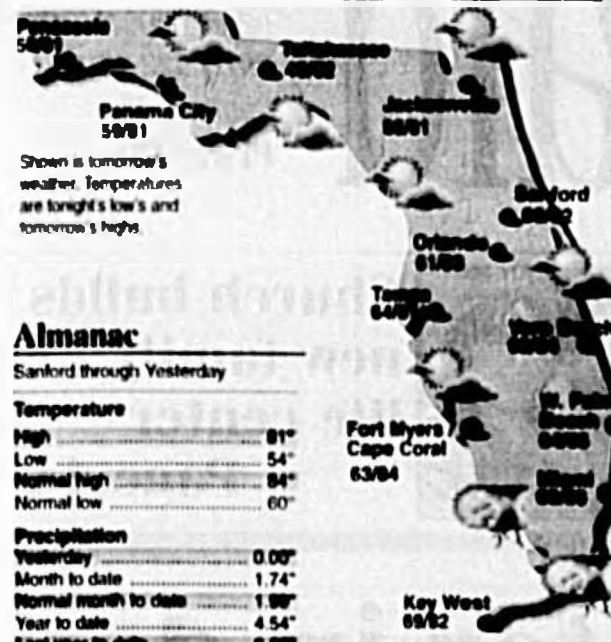


Dori Mills, a Sanford Recreation Department employee at the Senior Center, watches as a duck makes itself comfortable behind the center. The duck, which has made a nest and is hatching its eggs, has become the adopted pet of the seniors at the center.

ACCU WEATHER® FORECAST FOR SEMINOLE COUNTY

AccuWeather.com

Florida Weather



Five-Day Forecast for Sanford



UV Index Tomorrow



Regional Cities

City	Temp	High	Low
Abilene, TX	60	70	50
Albuquerque, NM	60	70	50
Albany, GA	78	83	77
Albany, NY	62	68	56
Albany, OR	62	68	56
Albany, WA	62	68	56
Albany, WI	62	68	56
Albany, WY	62	68	56
Albany, VT	62	68	56
Albany, ND	62	68	56
Albany, SD	62	68	56
Albany, IA	62	68	56
Albany, MO	62	68	56
Albany, KY	62	68	56
Albany, TN	62	68	56
Albany, MS	62	68	56
Albany, AL	62	68	56
Albany, GA	62	68	56
Albany, SC	62	68	56
Albany, NC	62	68	56
Albany, VA	62	68	56
Albany, WV	62	68	56
Albany, OH	62	68	56
Albany, PA	62	68	56
Albany, NY	62	68	56
Albany, VT	62	68	56
Albany, NH	62	68	56
Albany, ME	62	68	56
Albany, CT	62	68	56
Albany, RI	62	68	56
Albany, MA	62	68	56
Albany, VT	62	68	56
Albany, NH	62	68	56
Albany, ME	62	68	56
Albany, CT	62	68	56
Albany, RI	62	68	56
Albany, MA	62	68	56

Almanac

Sanford through Yesterday

Temperature
 High 81°
 Low 54°
 Normal high 84°
 Normal low 60°

Precipitation
 Yesterday 0.00"
 Month to date 1.74"
 Normal month to date 1.99"
 Year to date 4.54"
 Last year to date 6.39"
 Normal year to date 11.55"

Regional Weather

Florida: A cold front will bring a few showers and thunderstorms tonight. Tomorrow will turn out partly sunny and breezy behind the front.

Georgia: Breezy tonight with clearing skies. Tomorrow will turn out partly to mostly sunny and breezy.

Mississippi: Skies will remain clear tonight under an area of high pressure. Tomorrow will feature plenty of sunshine.

Alabama: High pressure will bring clear skies and cool temperatures tonight. Tomorrow will be mostly sunny and nice.

South Carolina: Clear and breezy tonight. Plenty of sunshine tomorrow with a warmer afternoon.

Louisiana: Breezy tonight with mainly clear skies. Plenty of sunshine tomorrow with a warm afternoon.

Sun and Moon

Sunrise Saturday 7:39 a.m.
Sunset Saturday 6:46 a.m.
Midnight today 3:38 a.m.
Moonset today 2:42 p.m.

New May 4
First May 10
Full May 18
Last May 26

Tides

Table for Daytona Beach Shores, Dunedin Pier

Tomorrow
 First Low 11:03 a.m. 0.7 R
 First High 4:42 a.m. 3.9 R
 Second Low 11:23 p.m. 0.8 R
 Second High 5:08 p.m. 4.8 R

Sunday
 First Low 11:52 a.m. 0.4 R
 First High 5:38 a.m. 4.0 R
 Second Low 6:02 p.m. 4.8 R

Tomorrow's National Weather



Shown are noon positions of weather systems and precipitation. Temperature bands are highs for the day. Forecast high/low temperatures are given for selected cities. Yesterday's National High/Low (for the 48 contiguous states): High 109° in Death Valley, CA Low 23° in West Yellowstone, MT

National Cities

City	Temp	High	Low
Albany, NY	62	68	56
Albany, OR	62	68	56
Albany, WA	62	68	56
Albany, WI	62	68	56
Albany, WY	62	68	56
Albany, VT	62	68	56
Albany, ND	62	68	56
Albany, SD	62	68	56
Albany, IA	62	68	56
Albany, MO	62	68	56
Albany, KY	62	68	56
Albany, TN	62	68	56
Albany, MS	62	68	56
Albany, AL	62	68	56
Albany, GA	62	68	56
Albany, SC	62	68	56
Albany, NC	62	68	56
Albany, VA	62	68	56
Albany, WV	62	68	56
Albany, OH	62	68	56
Albany, PA	62	68	56
Albany, NY	62	68	56
Albany, VT	62	68	56
Albany, NH	62	68	56
Albany, ME	62	68	56
Albany, CT	62	68	56
Albany, RI	62	68	56
Albany, MA	62	68	56

World Cities

City	Temp	High	Low
Albany, NY	62	68	56
Albany, OR	62	68	56
Albany, WA	62	68	56
Albany, WI	62	68	56
Albany, WY	62	68	56
Albany, VT	62	68	56
Albany, ND	62	68	56
Albany, SD	62	68	56
Albany, IA	62	68	56
Albany, MO	62	68	56
Albany, KY	62	68	56
Albany, TN	62	68	56
Albany, MS	62	68	56
Albany, AL	62	68	56
Albany, GA	62	68	56
Albany, SC	62	68	56
Albany, NC	62	68	56
Albany, VA	62	68	56
Albany, WV	62	68	56
Albany, OH	62	68	56
Albany, PA	62	68	56
Albany, NY	62	68	56
Albany, VT	62	68	56
Albany, NH	62	68	56
Albany, ME	62	68	56
Albany, CT	62	68	56
Albany, RI	62	68	56
Albany, MA	62	68	56

"Get It All."

Your newspaper gives you everything you could ever want, in terms of valuable information.

Money • Health • Interviews
 Reviews • Editorials • Advice
 Recipes • Coupons • Politics
 • Sports

Subscribe Today!
 Seminole Herald
 407/322-2611

Call (407) 322-2611 to subscribe

SEMIMOLE COMMUNITY COLLEGE
 Be yourself. Only better.™

Same great Program. **Less time.**
 Want to build or repair **computers?**

Learn everything you need to know to take the A+ or the Cisco CCNA certifications.

Day and night courses available. Seats are limited.
Register now.
 Classes begin May 8th.

Networking Academy

jazzercise®
 The #1 Dance Fitness Program in America

For Fitness, Friendship and Fun

* We've added more classes in Sanford to serve you better *

STEP JAZZERISE **simply JAZZERISE**

Sanford I **Sanford II**

Covenant Community Church
 1610 Airport Blvd
 Corner of Airport & 16th Street
Leri Campbell @ 330-3897

Sanford Recreation Department
 300 N. Park Ave.
 Corner of Park Ave & Palm St.
Susan Annett @ 330-9490

Puzzled?

SUMMER 2000 Call 407-328-2265 or 407-328-2050
 or visit www.seminole.cc.fl.us

Wish somebody could help you put your car insurance puzzle together? As a local professional independent insurance agency representing Auto-Owners Insurance Company, we're up to the challenge. For peace-of-mind protection and all your insurance needs, contact us today!

RICHARD RUSSI

Auto-Owners Insurance
 Life Home Car Business
 The "No Problem" People™

TONY RUSSI INSURANCE
 2575 S. French Ave.
 Sanford
322-0285

Southern Home Decor

ALWAYS Bloom

CARPET • TILE • WOOD
 AMINATE • BLINDS • SHUTTERS
 • WALLPAPER • FABRIC

Furniture Available for Special Order
 Leather, Upholstery & More

BLINDS & SHUTTERS UP TO 75% OFF

WALLPAPER UP TO 40% OFF

MONARK CARPET WEAR DATED II NYLON \$16.99 YD.
 Pad & Installation included

25 Years Interior Decorating Experience

Your One Stop Shop For Home Decor
 Complimentary Decorating Services

407-834-5566 **207 & 209 W. State Road 434 Longwood, Florida** **407-834-2288**

Handpainted Tables & Benches, Tapestries, Throws & Table Runners
 Wedgewood • Arthur Court
 Carol Wilson / Lady Jane Stationery

NEW MERCHANDISE ARRIVING DAILY!

We need your input and opinions. Letters to the editor and guest columns are both encouraged and appreciated.

Mail to us: 300 N. French Ave., Sanford, FL 32771

Call us: (407) 322-2611

Fax us: (407) 322-2611

Write us: letters@seminoleherald.com

Seminole Herald

"Serving Seminole County Since 1908"

Friday, April 28, 2000 • Vol. 92, No. 177

Published: Daily Except Monday, Saturday, Thanksgiving, Christmas and New Years by Republic Newspapers, Inc. • 300 N. French Ave., Sanford, FL 32771

Phone: (407) 322-2611 Fax: (407) 323-9408

Periodical Postage Paid at Sanford, Florida and additional mailing offices.

USPS 481280
 Postmaster: Send address changes to The SEMINOLE HERALD
 P.O. Box 1667
 Sanford, FL 32772-1667

Subscription Rates (Daily & Sunday)

	Home Delivery	Mail
3 Months	\$19.50	\$24.00
6 Months	\$39.00	\$48.00
1 Year	\$78.00	\$96.00

Florida Residents add 7% sales tax to above rates.

ADMINISTRATION
 Doug Fetzer - Publisher
 Betty Bennett
 Janice Maffei
 Linda Spiegel

ADVERTISING
 Ken Holtzinger - Manager
 John Colman
 Rozina Lavender
 Laura Hawley

CLASSIFIED
 Melinda Morris
 Ted Walker

CIRCULATION
 Edward A. Kramarcik - Circulation Manager
 Wanda Kourpanda

EDITORIAL
 Dan Ping - Editor
 Michelle Jerls - Managing Editor
 Dana Dietrich
 Bill Karne
 Nick Pfister
 Dean Smith
 Tommy Vincent
 Russ White

PRESS & STRIPPING
 Robert Skip Cowan
 Bill Egan
 Jack E. Ritchie
 Mark Sevoce
 Ewan Tyrrell, Jr. - Printing & Production Manager

LEGALS
 Trudis Langford

PRODUCTION
 Frank Volzine - Consultant
 Peggy Boehner
 Freda Helmers
 Cheryl Smith

Republic Newspapers, Inc.

C'mon people now, let's get together and pray

Let's hope no one is offended by National Prayer Day, which will be observed on Thursday, May 4.

Summer or later, the pained whimpers about prayer must come to a screeching halt — Thursday could be the start.

From the White House to city halls across the country, elected officials and community leaders are prepared to say their prayers on National Prayer Day. Governors of the fifty states are urging residents to pray together on Thursday.

The Continental Congress asked the Colonies to pray for wisdom in forming a nation in 1775. Abe Lincoln called for a day of fasting and prayer in 1863. President Ronald Reagan declared a National Day of Prayer the first Thursday of every May.

The Rev. Jeff Krall, pastor at the Sanford Family Worship

Center, is helping to put together an 11 a.m. prayer hour at Sanford City Hall. Krall heads up the Sanford Ministers group.

He's trying to get as many as he can to participate on Prayer Day.

There's a similar event — "Pray 2K" — that begins at 9 a.m. at Lake Mary City Hall. Pastor John Montgomery of River Oaks Presbyterian Church is helping to organize the Lake Mary observance of National Prayer Day.

Whatever critic him one may have for Sanford Mayor Larry Dale or Lake Mary Mayor David Meaker it would not be fair to say either of these leaders is without a prayer — neither sanctimonious nor overbearing, each mayor acknowledges his trust in God.

On this particular day of prayer, Dale and Meaker will express this trust. Most of us have learned

many ways to pray. Some say a prayer the second they are awake. Some pray themselves to sleep. Catholic children used to be taught that if they fell asleep praying the Rosary, the Blessed Virgin would finish it for them.

Sheriff Don Ealinger said that most police officers and deputies have a special prayer they say before beginning their daily shift. Firemen have their prayer, as do men and women in the armed forces. Chaplains serve on Naval vessels, usually on the carriers or larger ships. There are two or more chaplains at most jails and prisons.

Many are praying that the Supreme Court's decision to eliminate prayer in public schools will be reversed one day. On Thursday — National Prayer Day — tell the children it's all right. That's what Prayer Day is for — Praying.

Look at it this way — here's an opportunity to do just as the president and not feel the least bit ashamed about it.

Russ White's column appears daily in the Seminole Herald.



Russ White

Briefs

Art Association
The Sanford Seminoles Art Association will meet Saturday, April 29, at 1 p.m., at Grace Congregational Church, corner of Park Avenue and 24th Street. All interested persons are invited to attend.

Humanitarian award
Monday, May 1, the Sanford Lakeside Lion's Club will present the Deputy Gene Gregory Humanitarian Award to a member of the Seminole County Sheriff's Office. The name of the

recipient is being kept a secret until the ceremony at 6:30 p.m. at Logan's Roadhouse Grill, 4649 W. First Street in Sanford.

The award is given to the sheriff's employee who goes beyond the call of duty and takes a special interest in people, in caring, and in involved.


IOF Foresters
The Independent Order of Foresters Court Cedar 463 in Orlando will hold its member service luncheon on the first Friday of the month (May 5) at

11:30 a.m. The event is covered dish and attendees are asked to bring two cans of nonperishable food. The event will be held at 5718 Old Cherry Highway, Orlando, just north of highway 50 and off SR-436.

For additional information contact Kathy Smith in Casselberry, at 407-331-7597.

Lake Mary High School National Champion Lake Marionettes Dance Team Presents 2000 Lake Marionette Review Dance Recital Friday, April 28th - 7:30 pm

Lake Mary High School Auditorium
\$5.00 Advanced Tickets,
\$6.00 At Door
Call 407-320-9723 for Ticket Information



Be a part of Lake Mary High School Try-Outs for the Lake Marionette Dance Team - May 1st - 4th. Try-Outs open to incoming 9-12th graders. Financial assistance available. No dance experience required. Call Stacy Goldstein for more information - 407-320-9723.

Banfield Funeral Home
Family Owned & Serving Central Florida For 10 Years
GUARANTEED LOWEST PRICES

Burial	Cremation	Transport Out Of State
\$1,495	\$450	\$795

We Accept Most Prearranged Funeral Plans
327-1500

THE LIQUOR STORE

Win with losing lotto ticket!
\$25 or \$100

WE CASH CHECKS

1709 SANFORD AVE. SANFORD, FL 32771 (407) 327-7857

Obituaries

HELEN S. BEAN
Helen S. Bean, 65, Red Bay Drive, Longwood, died Tuesday, April 25, 2000. Born in Winston Salem, N.C., he moved to Central Florida in 1957. She was a bookkeeper for Palm Springs Pharmacy. She belonged to Moravian Church, Longwood.

Survivors include husband, David L.; son, Brendan, Casselberry; brothers, John L. Smith, Galax, Va., William D. Smith, State Road, N.C., Albert C. Smith, Winston-Salem; sisters, Mary Becker, Ocala, Nancy Timmons, Old Town, N.C. Woodlawn Carey Hand Funeral Home, Longwood, in charge of arrangements.

DOUGLAS CRAWFORD
Douglas Crawford, 96, Pear Avenue, Sanford, died Wednesday, April 26, 2000 at Central Florida Regional Hospital. He was born Nov. 7, 1903. He was retired, and a member of New Bethel Missionary Baptist Church. Survivors include wife, Odessa; son, James, Milburn, Ga. Wilson-Eichelberger Mortuary, Inc., Sanford, in charge of arrangements.

HERMEN CRUZ
Hermen Cruz, 75, Weatherwood Circle, Winter Springs, died Wednesday, April 26, 2000 at South Seminole Hospital, Longwood. Born April 13, 1926 in Culebra, Puerto Rico, he moved to Central Florida 12 years ago. He was a retired mill worker and a Catholic. Survivors include wife, Ricarda; son, Hermen A., Winter Springs; two grandchildren. Banfield Funeral Home, Winter Springs, in charge of

arrangements.

MARIANNE HOPKINS HAMMOCK
Marianne Hopkins Hammock, 51, Rochester, Mn., formerly of Longwood, died Monday, April 24, 2000. Born in Hoboken, N.J., she moved to Central Florida in 1952. She was a retired master cosmetologist and a Catholic.

Survivors include husband, Lee, Rochester, Md.; son, Brian, Jacksonville; daughter, Rebecca Hammock Jones, Lake Mary; brothers, James Hopkins, Martin Hopkins, Daniel and Edward, all of Longwood. Woodlawn Carey Hand Funeral Home, Longwood, in charge of arrangements.

JOSEPH INFANTINO
Joseph Infantino, 94, Nedra Avenue, Deltona, died Thursday, April 27, 2000 at DeBary Manor. Born in Italy, he moved to Deltona from Hollywood, Fl., in 1980. He was retired owner and operator of Philadelphia Pittsburgh Carriers in Pittsburgh, Pa. He was a 4th Degree member of Knights of Columbus and a member of Our Lady of the Lakes Catholic Community.

Survivors include wife, Grace M.; sons, Charles, Davie, Joseph A. Jr., Gainesville; daughters, Carmela McCloy, Peoria, Ariz., Joan Corisek, Deltona; sisters, Virginia Fugliano, Bethel Park, Pa., Jeanne Pio, Plymouth Meeting, Pa.; seven grandchildren; 12 great-grandchildren.

Fourtowns Cremation, Inc., Orange City, in charge of arrangements.

MARY W. LEEBRICK
Mary W. Leebrick, 86, Ambleswood Court, Deltona, died Monday, April 24, 2000. She was born in Coleman Falls, Va. She was in the sales department for Lerner's and a member of First Baptist Church, Orange City.

Survivors include son, Richard W. Jr., Deltona; two grandchildren; five great-grandchildren; two great-great-grandchildren. Woodlawn Carey Hand Funeral Home, Longwood, in charge of arrangements.

LOTTO


Here are the winning numbers selected in the Florida Lottery

February 8 (April 27)
2-0-11-14-18

Lotto (April 26)
4-21-24-27-32-82

Mega Money (April 25)
3-10-23-32 — Megaball 1

April 27
Play 4
6-3-5-7
Cash 3
7-1-2



The Florida Comfort System by Trane.

Is that your final answer?
IT'S A GOOD ONE!

- ◆ A Florida Comfort System by Trane is the best answer for your home's comfort and savings. With efficiency ratings to 18.0, you'll save up to 6% on your utility bills.
- ◆ It can remove up to 25 gallons of water a day from the average home. That's up to 100 lbs. from more than a conventional system.
- ◆ Act now and get a great Savings Check up to \$450 when you install a new Trane.
- ◆ But hurry, this is a limited time offer.

Visit our website at www.trane.com

PLUS GET THE MEMBER GAINS AS CASH

FACEMYER AIR CONDITIONING & HEATING
2400 Old Lake Mary Rd., Ste 1120
Sanford, FL Lic#CAC060428
(407) 322-7466

ACE HARDWARE ACE HARDWARE ACE HARDWARE

ACE HARDWARE STORES

SPRING SPECTACULAR!

ACE BRAND TOP SOIL 95¢ 40 LBS.
PINE BARK \$1.77 2 cubic feet
RIVER ROCK \$2.27 1/2 cubic feet
Smooth Stepping Stone Round of Square \$1.00

Carpet Steam Cleaner \$12.00 Per Day | Grape Myrtle 4-5 ft. \$3.00

25Lb. ALL PURPOSE 10-10-10 \$9.97
10-4-10 FERTILIZER 10-10-10 \$5.97
10-4-10 FERTILIZER 10-10-10 \$5.97
10-4-10 FERTILIZER 10-10-10 \$9.97
10-4-10 FERTILIZER 10-10-10 \$9.97

PROPANE TANKS FILLED EVERY DAY While You Wait 20 lb. Tank **\$8.95**

ACE - LONGWOOD 494 & 427 320-0999
ACE - SANFORD 287 E. 29th St. 321-9999
ACE - CASSELBERRY Winter Park Dr. 320-7295

BROWN'S GYMNASTICS

ALL SPORTS SUMMER DAY CAMP

*** BRAND NEW FACILITY ***
LAKE MARY SANFORD GYM
(407) 302-2044

FULL DAY PRICES

5 Day Rate	\$130 Pd Weekly
3 Day Rate	\$80 Pd Weekly

* Pick up by 5:30 p.m.

1/2 DAY PRICES

1 Day Wk Rate	\$30 Pd Weekly
2 Day Wk Rate	\$50 Pd Weekly
3 Day Wk Rate	\$80 Pd Weekly
4 Day Wk Rate	\$70 Pd Weekly
5 Day Wk Rate	\$80 Pd Weekly

* Pick up by 12:00 Noon
★ 10% OFF 2nd Child ★

NEW GYM ADDRESS
901 Central Park Drive
(Corner of Coastline Rd. & Central Park Drive)
Sanford, FL 32771
(407) 302-2044

FUN FUN FUN

Religion

Palmetto Avenue Baptist opens Family Life Center

By Russ White



Member photo by Tammy ...

Briefs

First Study M.B.

... ..

At St. Mary's Baptist

... ..

South Lakes AMI

... ..

Assemblies Disparates

... ..

First Baptist Church

... ..

Community Church

... ..

Calvary Assembly

... ..

Calvary Assembly

... ..

Calvary Assembly

... ..

People check in at spirit central



Plagenz

.....

You're invited to a Celebration
THE ROCK
 A Family Church
 407-322-2811

CLASSIFIEDS
 CALL 407-322-2811

NEAT-N-TIDY ALL CLEAN
 WE DO WINDOWS!
407-324-1177
 WE'RE NOT YOUR AVERAGE CLEANING COMPANY

SPRING CLEANING
DEEP CLEANING SPECIAL
 3 BEDROOM • 2 BATH HOME
 2 HOUR CLEANING
 1 WEEK ONLY
\$75

NO JOB TOO BIG OR SMALL WE DO IT ALL!!

INCLUDING:
 • DUSTING
 • VACUUMING
 • MOPPING, WAXING FLOORS
 • WINDOWS MIRRORS
 • CEILING FANS
 • ALL APPLIANCES
 • CLEANED INSIDE & OUT
 • CHANGE DIRTY LINENS

AND MUCH MUCH MORE!
 Licensed • Bonded • Insured!

Residential • Offices
 Apartments • Commercial

OFFICE PACKAGES STARTING AT \$30*

• PREMIUM CLEANING
 • EXCELLENT SERVICE
 • AFFORDABLE RATES

GIVE US A CALL TODAY!
 YOU WON'T BE DISAPPOINTED!
 321-7699 • 324-1177

Since 1975

We Serve Sanford, Lake Mary, Volusia County & surrounding areas.

Your neighborhood air conditioning company.

AIR MASTERS

Air Conditioning • Heating
 STATE CERTIFIED CAC046916
(407) 323-2990

You may have seen us in your neighborhood.

We have been serving your neighborhood for over 13 years and we also live in your neighborhood. The quality of workmanship we provide is not only for our customer but for our neighbors. We take pride in service and through quality Rheem products at the best price.

Rheem

... ..

NEWSWATER ENTERPRISES ASSN.

Prom set for June 3

House of Refuge will hold its annual prom - The Royal Affair - on June 3 at the Embassy Suites in Altamonte Springs. Music ministry will be provided by God Sent and others beginning at 6 p.m. Affire will be formal and semi-formal. Cost for the event is \$40. For additional information phone 407-328-9826 or 407-324-1711.

DIRECTORY OF CHURCH SERVICES



First United Methodist Church, 413 Park Avenue, Sanford, FL

Anglican
 THE ANGLICAN CHURCH OF THE SOUTH
 1000 W. 22nd St. Sanford, FL 32773
 (321) 322-1111

Baptist
 FIRST BAPTIST CHURCH
 1000 W. 22nd St. Sanford, FL 32773
 (321) 322-1111

Assembly Of God
 ASSEMBLY OF GOD CHURCH
 1000 W. 22nd St. Sanford, FL 32773
 (321) 322-1111

Catholic
 ST. MARY'S CATHOLIC CHURCH
 1000 W. 22nd St. Sanford, FL 32773
 (321) 322-1111

Church Of God
 CHURCH OF GOD
 1000 W. 22nd St. Sanford, FL 32773
 (321) 322-1111

Christian
 CHRISTIAN CHURCH
 1000 W. 22nd St. Sanford, FL 32773
 (321) 322-1111

Baptist
 BAPTIST CHURCH
 1000 W. 22nd St. Sanford, FL 32773
 (321) 322-1111

Christian Science
 CHRISTIAN SCIENCE
 1000 W. 22nd St. Sanford, FL 32773
 (321) 322-1111

Church Of Christ
 CHURCH OF CHRIST
 1000 W. 22nd St. Sanford, FL 32773
 (321) 322-1111

Methodist
 METHODIST CHURCH
 1000 W. 22nd St. Sanford, FL 32773
 (321) 322-1111

Presbyterian
 PRESBYTERIAN CHURCH
 1000 W. 22nd St. Sanford, FL 32773
 (321) 322-1111

Seventh Day Adventist
 SEVENTH DAY ADVENTIST CHURCH
 1000 W. 22nd St. Sanford, FL 32773
 (321) 322-1111

Nazarene
 NAZARENE CHURCH
 1000 W. 22nd St. Sanford, FL 32773
 (321) 322-1111

Spiritualist
 SPIRITUALIST CHURCH
 1000 W. 22nd St. Sanford, FL 32773
 (321) 322-1111

United Church Of Christ
 UNITED CHURCH OF CHRIST
 1000 W. 22nd St. Sanford, FL 32773
 (321) 322-1111

Wesleyan
 WESLEYAN CHURCH
 1000 W. 22nd St. Sanford, FL 32773
 (321) 322-1111

Catholic
 ST. MARY'S CATHOLIC CHURCH
 1000 W. 22nd St. Sanford, FL 32773
 (321) 322-1111

Church Of God
 CHURCH OF GOD
 1000 W. 22nd St. Sanford, FL 32773
 (321) 322-1111

Evangelical
 EVANGELICAL CHURCH
 1000 W. 22nd St. Sanford, FL 32773
 (321) 322-1111

Non-Denominational
 NON-DENOMINATIONAL CHURCH
 1000 W. 22nd St. Sanford, FL 32773
 (321) 322-1111

Christian
 CHRISTIAN CHURCH
 1000 W. 22nd St. Sanford, FL 32773
 (321) 322-1111

Baptist
 BAPTIST CHURCH
 1000 W. 22nd St. Sanford, FL 32773
 (321) 322-1111

Christian Science
 CHRISTIAN SCIENCE
 1000 W. 22nd St. Sanford, FL 32773
 (321) 322-1111

Church Of Christ
 CHURCH OF CHRIST
 1000 W. 22nd St. Sanford, FL 32773
 (321) 322-1111

Methodist
 METHODIST CHURCH
 1000 W. 22nd St. Sanford, FL 32773
 (321) 322-1111

Presbyterian
 PRESBYTERIAN CHURCH
 1000 W. 22nd St. Sanford, FL 32773
 (321) 322-1111

Seventh Day Adventist
 SEVENTH DAY ADVENTIST CHURCH
 1000 W. 22nd St. Sanford, FL 32773
 (321) 322-1111

Nazarene
 NAZARENE CHURCH
 1000 W. 22nd St. Sanford, FL 32773
 (321) 322-1111

Spiritualist
 SPIRITUALIST CHURCH
 1000 W. 22nd St. Sanford, FL 32773
 (321) 322-1111

United Church Of Christ
 UNITED CHURCH OF CHRIST
 1000 W. 22nd St. Sanford, FL 32773
 (321) 322-1111

Wesleyan
 WESLEYAN CHURCH
 1000 W. 22nd St. Sanford, FL 32773
 (321) 322-1111

Methodist
 METHODIST CHURCH
 1000 W. 22nd St. Sanford, FL 32773
 (321) 322-1111

Presbyterian
 PRESBYTERIAN CHURCH
 1000 W. 22nd St. Sanford, FL 32773
 (321) 322-1111

Seventh Day Adventist
 SEVENTH DAY ADVENTIST CHURCH
 1000 W. 22nd St. Sanford, FL 32773
 (321) 322-1111

Nazarene
 NAZARENE CHURCH
 1000 W. 22nd St. Sanford, FL 32773
 (321) 322-1111

Spiritualist
 SPIRITUALIST CHURCH
 1000 W. 22nd St. Sanford, FL 32773
 (321) 322-1111

United Church Of Christ
 UNITED CHURCH OF CHRIST
 1000 W. 22nd St. Sanford, FL 32773
 (321) 322-1111

Wesleyan
 WESLEYAN CHURCH
 1000 W. 22nd St. Sanford, FL 32773
 (321) 322-1111

THIS PAGE IS MADE POSSIBLE BY THESE CIVIC-MINDED SPONSORS THEY DESERVE YOUR SUPPORT

BARNES HEATING & AIR CONDITIONING 915 W. 2nd St. 323-3517	An African American finest Presents Creative Inspirational GOSPEL SONGS by Mr. Horace 323-1386	HIDE WITH THE BEST UNITED CAB (407) 321-7741	ACE Hardware Stores Your Satisfaction My Minimum Standard 321-2720	Baldwin Fairchild Oaklawn Park THE SIMPLICITY PLAN 322-4263
SEMINOLE TRINITY CHRISTIAN SCHOOL and DAYCARE 801 W. 22nd St. Sanford • 321-2723	ACE Hardware Jim Dunn 321-2720	Village On The Green (407) 682-0240	Labours NURSING CENTER CHECK OUT OUR LOW RATES 307-322-6707	Chapter 'A Verse Christian Books Tapes & Things (407) 349-5033
A.J.G. LOCKSMITH 2013 French Ave. Hwy. 17-92 Sanford, FL 32771 323-3836	THIS SPACE AVAILABLE! Call 322-2611 For more information	Yates Roofing SPECIAL DISCOUNTS TO CHURCHES & SENIORS 407-322-1449	BRISSON FUNERAL HOME 9th St. and Laurel Ave. Sanford 322-2111	MARINER'S VILLAGE 323-8670
UNIVERSAL SECURITY & INVESTIGATIONS, INC. JOHN BRIDGES III President 321-322-1111	CENTRAL SYSTEMS S.E., INC. COMMERCIAL INDUSTRIAL REFRIGERATION 321-322-1111	COLONIAL ROOM RESTAURANT 115 E. FIRST ST. SANFORD 323-2999	STENSTROM MONTOSH COLBERT WHIGHAM & SIMMONS P.A. Attorneys at Law 322-2111	THE MCKIBBIN AGENCY 111 N. Park Ave. Sanford 322-0331
Winn-Dixie Marketplace	4M Professional Business Consultant International Liaison Author & Blogger 321-322-1111	THIS SPACE AVAILABLE! Call 322-2611 For more information	HARREL & BEVERLY TRANSMISSIONS David Beverly and Staff 209 W. 25th St.	Gramkow Funeral Home 300 E. Argyle Blvd. Sanford 32773 322-3213

Schools

Continued from Page 1A

School district staff will research the impacts of the proposed change, speak with principals, and come back with a recommendation during the next School Board meeting on May 9. If approved, the change would be implemented in August.

"It would give students another 15 minutes to sleep," said Bobby Lundquist, principal of Oviedo High School. "High School kids are resilient, 15 minutes will not make much of a difference one way or another."

Lake Mary High School principal Boyd Karna said he favors the proposal, although he is concerned about middle school students being dismissed closer to rush hour traffic.

"I think the School Board is concerned about students being out in the dark," Karna said. "It will help with that, some."

Changing school starting times affects bus transportation, student jobs, child care, and after-school activities. The change would also impact parents who drop off schoolchildren on the way to work.

"It's hard when you have different schedules for elementary, middle and high schools," said Gloria Flanagan, principal of Lake Mary Elementary School. "I would prefer to start when we do now, at 8:35 a.m. But, we could make the change without much of a fuss."

Unlike neighboring counties, including Orange and Osceola, there have been no serious incidents in Seminole County prompting the proposal to change starting times.

Orange County moved the start of the school day back 15 minutes this school year because of concerns regarding safety and whether students get sufficient sleep. Administrators are discussing making further changes.

High schools in Volusia County start at around 7:20 a.m. Elementary schools start at about 8 a.m. and middle schools start about 8:40 a.m. In Orange County, high schools start from 7:25 a.m. to 7:45 a.m.

The debate over when to start school stems from a series of accidents last fall, in which a dozen schoolchildren on their way to and from schools in Central Florida were struck by automobiles.

Several were hospitalized with serious injuries. A 14-year-old girl attending Dr. Phillips High School was struck by a car and killed in October while

crossing a busy five-lane road. Most of the accidents occurred in Orange County.

Meanwhile, the Brevard County School Board on Tuesday rejected a proposal to push back the starting time for middle and high schools from 7:10 a.m. to 8:50 a.m. In addition, under the proposal, elementary schools would have started class at 9 a.m., one hour later than they do now.

The School Board rejected the plan because implementing new bus schedules, purchasing more buses, and hiring additional staff would have cost up to \$6 million. The Brevard County School Board is still discussing the possibility of starting classes 30 minutes to 60 minutes later next school year.

However, parents have not been inundating the Seminole County School Board with requests to start the school day later.

There have been no serious problems with students getting struck by cars and killed as there have been in Orange and Osceola counties, according to the Juvenile Crime Enforcement Division of the Seminole County Sheriff's Office.

Middle schools start class at 9:15 a.m. The proposal would move the starting time to 9:30 a.m. Some elementary schools currently start at 7:50 a.m., and others begin class at 8:35 a.m.

School Board member Jeanne Morris said she is concerned about how the proposal would

impact middle schools, which start and dismiss classes later than elementary or high schools.

"You're going to really be impacting Middle School kids if you're starting at 9:30 a.m.," Morris said. "That's an awfully long time for them to be home alone."

In addition, the end of the school day may also be pushed back 15 minutes. High Schools currently get out at 2:20 p.m. four days a week, and 1:20 p.m. on Wednesdays.

The School Board could delay the end of the school day for Middle Schools from its current time of 3:50 p.m. on Monday, Tuesday, Thursday and Friday to 4:15 p.m. on those days. On Wednesday, school would be dismissed at 3:15 p.m. instead of 2:50 p.m.

Some elementary schools end the day at 3:05 p.m., and others end at 2:20 p.m.

"If you move a particular time, you run into a domino effect," said Raymond Gaines, director of secondary education for the school district. "The situation of getting into evening rush hour traffic does pose problems."

Jim Shupe, principal of Chiles Middle School in Oviedo, said there have been no reported problems related to the start of the school day.

"I assume that the reason we would change is to give high schools more daylight," Shupe said. "We would have absolutely no problem with that at all."

Insurance

Continued from Page 1A

an 97,500 existing policies in Florida that were sold on a discriminatory basis. Many of these were sold by three companies which have since been acquired by American General. Some of the African Americans involved have now paid up policies, but thousands of others are still paying premiums that range from seven to 33 percent above what whites are charged.

"By continuing to collect the higher premiums a company is

perpetrating racial discrimination," Nelson said Thursday. "That's why I'm serving American General with legal notice that there must be swift and full corrective action."

In addition to American General, the insurance department is also investigating four other companies. The five, collectively, hold much of the \$900 million worth of \$1.2 million burial insurance policies currently in force in Florida. The other four which have been

issued a subpoena seeking records dating back to 1959 include United Insurance Company of America, Capital Security Life Insurance Company, Liberty National Life Insurance Company and Life Insurance Company of Georgia.

The probe follows efforts to get the Florida Legislature to protect consumers from insurance policies sold to cover burial expenses.

Spring Festival & Garden Tour

Sponsored By:
The Sanford Historic Trust

Events:

- Tour Gardens of the Historic District
- Craft Demonstrations
- Tour the Award Winning Seminole County Demonstration Gardens
- Plant Clinic (Seminole County Master Gardeners)
- Visit Touhy Park

Gardening Classes Throughout The Day

Featuring: Tom MacCubbin - Speaking on Raised Bed Gardens

When: Sat. April 29th - 10 a.m. - 5 p.m.
Where: Student Museum/Touhy Park (301 W. 7th St., Sanford, FL.)
Admission \$6 (00) (children under 12 free)
Ticket Info call: (407) 324-9238

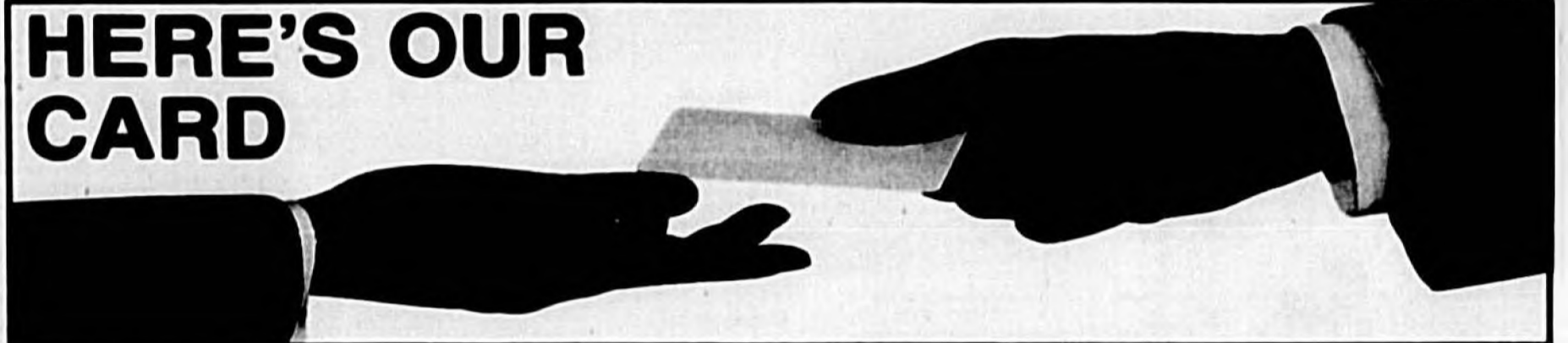
For Vendor Information
Contact Walt Padgett (407) 324-9238

Vendors

Live Entertainment

Good Booth

HERE'S OUR CARD



LOW COST CONTRACTORS LIABILITY INS.

ONE MAN SUBS OR LARGER
CALL FOR A FREE PHONE QUOTE!!!

ALSO
LICENSE BONDS & WORKERS COMP

ROGER DOUGHTY INSURANCE
407-321-2129

MUSIC CENTER

- Lessons
- Music
- Sales
- Rentals
- Repairs
- Karaoke
- Accessories

851 E. Hwy. 434 407-767-2881 Phone
Time Square Plaza 407-767-1888 Fax Red & White
Longwood, FL 32758 www.cruisemusic.com Shuttleworth

CHINA STAR SUPER BUFFET

SATURDAY & SUNDAY
DINNER BUFFET ALL DAY

Hot Food, Sealed Bar, Dessert, Ice Cream
Monday - Friday Power Lunch
Seafood Dinner Every Day
Snow Crab Legs Add \$2.00 Dinner Only
ALL DAY BUFFET, ALL YOU CAN EAT

SENIOR DISCOUNT 328-6788
2508 S. French Ave., Hwy. 17-92 & 25th St., Sanford

Since 1968 **Lawns Alive Inc.**

Lawn & Landscape Maintenance Sod

Management Landscaping Clean-ups

Irrigation
Repairs & Installation
"If it's Not Alive - You're Not Using Us"
407-831-8436
Commercial & Residential
Apartments-Shopping Centers-Condos

The APPLIANCE STORE, Inc.

153 W SR. 434 • Winter Springs
407-327-3344

12 Mo. Warranty on refrigerators
2 yr. Warranty on built-in W/D
New Parts & Delivery Available

\$299

All Major Credit Cards Accepted

PAMELA J HELTON P.A.

ATTORNEY AT LAW
BANKRUPTCY • DIVORCE

Payment Plans • Also Practicing In:
Family Law, Modification, Child Support,
Landlord / Tenant, Evictions, Domestic
Injunctions, Guardianship, Probate and Wills.

801 N. Magnolia Ave., Ste. 407, Orlando, FL 32803
Phone: 481-9564

The hiring of a Attorney is an important decision that should not be based solely upon advertising. Before you decide, ask me to send you free information about my qualifications and experience.

ICE COLD AMERICA

OF SEMNOLE, INC.

FACTORY AIR SPECIALISTS
SALES • SERVICE • PARTS • ALL MAKES
RADIATORS • SPEEDOMETERS • BRAKES
AUTO ELECTRIC • TUNE UPS

1580 E. STATE ROAD 436 407-834-1065
FERN PARK, FL 32730 Fax 407-834-4388
E-MAIL: icecold@maginet.net

HAIR TRENDS II BOYS 2 MEN

- SHAGS
- MEN CUTS
- WEAVES/PURGES
- PERMS/STYLES
- SHAVES
- FACIALS
- CUTS
- MASSAGES
- COLOR
- PERMURE
- STRIPE NET
- BARBER PRIC

Spring Specials
• 328-2900 • AT FIVE POINTS • 324-8636 •

Madame Katherine & Daughter

PSYCHIC READING, PALM
CRYSTAL BALL & CARD READING

Read Out What The Year 2000 Will Bring!

Do you have questions that need answering? Have you and your loved ones repeated or do you have the right solution? Do you need help or guidance or do you need questions answered?

\$10 OFF 1891 S. Hwy. 17-92 Longwood
(right side coming from Orlando)
407-885-7885

Action Now!

Personal Fitness Training

- Loose Weight
- Get Stronger
- Feel Better

Guy Robertson
Certified Trainer

407-324-1216
E-mail: Muscle Mentor@aol.com

2 Miles West of Oviedo on HWY 434

WALTER HENDRIX

ANTIQUES & REFINISHING
ANTIQUES BOUGHT & SOLD
OPEN 8 DAYS A WEEK - FREE ESTIMATE &
PICK-UP AND DELIVERY
SAME LOCATION FOR 33 YEARS

Phone (407) 365-3740

1030 W STATE
RD. 434 OVIEDO,
FL 32785

ALL-YOU-NEED DOMESTIC SERVICE

Licensed • Bonded • Insured • Residential
• Commercial • Home Health Care • Baby Sitting
• Run Errands • Prepare Meals

April Special
\$9.99 3 HRS OR Home Cleaning
9:00-5:00 PM

(407) 320-0786

Where Would \$3,000 Every Week Take You?

A real world opportunity to travel the world and *Make Big Money!* If you did not earn \$3,000 last week, call:

1-407-843-3999

CAFE 136

Breakfast/ Lunch/Delicatessen

2921 Orlando Dr.
Suite 136
Sanford Plaza
(407) 321-4007
7 a.m. - 7:00 p.m.
Mon. thru Sat.

NOW OPEN

JOIN A BILLION DOLLAR TELECOMMUNICATION CO.

Home Based Business, Now Expanding to the United Kingdom and Europe.

BE YOUR OWN BOSS.

For more information call
1-888-442-3099. Ask for Robert.

PHOTO COURTESY OF THE SEMINOLE COUNTY SHERIFF'S OFFICE

This publication is a benefit for members of the Sanford/Seminole County Chamber of Commerce

ChamberNews

May 2000

Seminole Herald's numbers up 42 percent in 2000



Long a landmark in downtown Sanford, the Seminole Herald has experienced a 42 percent increase in circulation during the first quarter of 2000. Between 75-100 specialty publications also roll off The Herald's presses each month, including ChamberNews 2000.

The *Seminole Herald*, Sanford's hometown newspaper which covers all of Seminole County, has experienced a 42 percent increase in circulation during the first quarter of 2000, said Publisher Doug Fetzer.

Fetzer attributes the increase in part to a new sampling and telemarketing program being used to increase awareness of the *Herald*. The program includes carriers delivering free newspapers to non-subscribers followed up by calls to see if those people want to subscribe.

"The response has been tremendous," Fetzer said. In addition, advertising revenues is up as well with the inception of frequency programs for regular advertisers.

The *Herald's* circulation numbers, which had been decreasing since the mid-1980s, are once again in the 6,500+ range and increasing daily.

"We've had as many as 110 new subscription orders in a single day," Fetzer said.

The *Herald*, which is published Tuesday-Saturday, uses no wire services. Their coverage is strictly local, gathered entirely by their staff. Increased city and county government coverage, as well as local editorial pages in the Wednesday and weekend editions, give readers a depth of information unavailable elsewhere as well as a forum to express their opinions. They invite letters to the editor and guest columns, but Fetzer stressed that the *Herald* is interested in your opinions on issues, not individuals. "We cover local issues that the larger metros [newspapers] don't. At the same time, we offer our advertisers an interested and growing audience at reasonable rates."

The *Herald* also has increased their coverage of the local business community. "We want to let folks know about new businesses in the area as well as expansions, promotions and other issues of interest to local residents and businesses alike," Fetzer said.

Please see *Seminole Herald*, page 4

Helen Stairs Theatre opens May 6

Following nearly six-year's of polishing, a gem is in our midst once again, the *Helen Stairs Theatre for the Performing Arts* is a treasure of rare quality. Magnificent and richly renovated to its' original restrained commercial vernacular style, the historic Theatre has been transformed into a masterpiece for the performing arts. A dream is realized.

On Saturday, May 6, at exactly 8 p.m. the curtain will open once again with lively applause for one of the most important performances in the Theatre's history -- the Gala Opening and Dedication of the newly named *Helen Stairs Theatre*. Originally called the *Milam Theatre*, and then later the *Ritz Theatre*, this distinguished opening night is sure to be reminiscent of the Theatre's first grand opening held in 1923. One distinctive difference however, will be the live performance by a Broadway star instead of a Vaudeville star.

Tony Award winner and two-time Grammy Award nominee Melba Moore will headline the gala event.

New-member orientation scheduled May 17 at the Chamber office

All new members of the Sanford/Seminole County Chamber of Commerce who have not attended a new-member orientation are invited to the Chamber May 17 at 8 a.m. Board members and ambassadors will be on hand to provide information about the benefits membership in the Chamber can provide and to assist you in taking advantage of them. A continental breakfast will be served. Please call the Chamber at 407 322-2212 to

There will also be performances by the Central Florida Lyric Opera, Orlando City Ballet, the Ballet Guild of Sanford-Seminole, Patricia Whaley Tajiri School of Performing Arts & Academics, and the world-renowned S.O.D.A. Pops of Miriam and Valerie's School of Dance Arts. After decades of silence, the orchestra pit will emanate with sound of music provided by Valerie Pernice and Stardust Productions.

The Theatre will be dedicated by U.S. Representative John L. Mica as a gift to the people of the community and will take its' place once again as the focal fixture in historic downtown Sanford. Congressman Mica will thank the more than 300 individuals, businesses and government agencies, who joined together to preserve the elegant beauty of a historic jewel and to create a unique cultural facility, a vital centerpiece for community events.

Those attending the opening night festivities will step back from a timeless setting when local vaudeville theatre and performers took their turns on the stage and movies flickered across the big screen during the Ritz Theatre era. Since its grand opening in 1923, hundreds of thousands of people experienced the magic of this historic Theatre and now, with the \$1.5 million restoration project complete, thousands more will experience its' grandeur.

Ronald Rose, Sanford/Seminole County Chamber Executive Director, Ritz Community Theatre Projects Board Member, and President of the Seminole County Cultural Arts Council said, "Creating centers of culture and revitalizing downtowns are two essential ingredients in building and sustaining a strong local economy. We are committed to marketing this wonderful regional Theatre throughout Central Florida and beyond." The gala-opening event is open to

the public. Tickets are \$75 per person and are available at the Sanford/Seminole County Chamber of Commerce and at the door the night of the gala. A 6:30 pm reception in a large tent will precede the dedication and performance.

Some see Sanford as a quaint lakefront community, but theatrically it will become a bee-hive of activity and entertainment for all of Central Florida. Touring shows, live theatre, and concerts make up the new Theatre's season show schedule.

The *Helen Stairs Theatre* will present a mini season this summer consisting of one play "Social Security" and a concert by Tom Chapin. The Theatre's first official season will begin in September 2000 and will last through May 2001. The highlight of the seven-show season will be the Holiday concert by the Moscow Boys Choir in December. Other season shows include John Amos' Halley's Comet, The Dukes of Dixieland, Cherish the Ladies. Community theatre productions of *Having Our Say*, *Forever Plaid*, and *Mother Hicks* will complete the inaugural season.

The *Helen Stairs Theatre* pledges to work hard to maintain a standard of theatrical passion and excellence that satisfies audiences of all ages and leaves them with lasting memories. This unwavering commitment will result in exciting and magical moments - funny moments, sad moments, moments of passion, moments that stay with theatre-goers and sometimes change their lives. The Theatre will offer children's performing arts workshop and after school programs. Season subscriptions are available. Call the Theatre box office for details 407-321-8111. The *Helen Stairs Theatre* is located on the corner of Second Street and Magnolia Avenue in Historic Downtown Sanford and is available to lease

Adelphia Business Solutions hosted the Adelphia Invitational Golf Classic at Bay Hill Golf & Country Club May 1 benefiting the Make-A-Wish Foundation of Central Florida. All proceeds from the event will go directly to the Make-A-Wish Foundation, which grants wishes for children living with life-threatening illnesses. Kudos to Adelphia and everyone else involved in such a worthy fundraiser.



Holiday Inn Express of Sanford's General Manager Sam Beutlege announced that construction will begin soon on a swimming pool at the hotel. Although they received a Beautification Award from the city in January, additional landscaping is still underway and the grounds are looking great. The hotel, located at 3401 S. Orlando Ave. in Sanford, will be adding French toast, pancakes and ham & cheese to their Continental breakfast fare. Holiday Inn Express recently hosted recuperating Orlando Police Officer Diaz while his home was being adapted to accommodate his needs following lengthy medical treatment. Officer Diaz was wounded earlier this year while on a routine traffic stop in Orlando. Get well soon, Officer Diaz — and hats off to Holiday Inn Express for exceptional corporate citizenry!



Parts.com, downtown Sanford's own business-to-business auto parts exchange on the Internet, has applied for a listing on the Nasdaq Stock Exchange. The company, which employs 50 people, went online in January. Shown Lucas is chairman and co-chief executive officer. Parts.com acts as a conduit for the sale of auto parts from manufacturers to car dealers and garage owners nationwide.

h m b e w s

Mailed news releases to: Sanford/Seminole County Chamber of Commerce, 400 East First Street, Sanford, Florida 32771-1408, or by email: info@sanfordchamber.com, or by Fax: 407-322-8160. Deadline is the 15th of each month. Publication is on the first of the month. This newsletter is inserted in the Seminole Herald and mailed to chamber members. Questions? Tel: 407-322-2212.

2000 BOARD OF DIRECTORS

President: Bob Parsell, ACE Hardware
 Vice Pres: Jeff Triplatt, Century National Banks
 Treasurer: Bryan Volk, Monroe Harbor Marina
 Past Pres: Helen Stairs, K & H Investments, Inc.

Directors:

Matt Altomase, Powell's Office Supply
 Dan Berger, Lawmasters of Central Florida
 Tom Feenay, State Representative
 Doug Felzer, Seminole Herald
 Bernia Fitzgerald, Granny's, Magnolia Square
 John Harlam, Skystorm Production
 Carol Hawkins, Seminole Community College
 Linda Johnson, William Howard's Jewelers
 Bob Kuhn, Diamond Glass Company
 Michael Rodriguez, Puerto Rican Chamber
 Charles Rowe, City of Sanford
 Rev. Bruce Scott, First Presbyterian Church
 Richard Swann, Federal Trust Bank
 Barbara Vaughn, SunTrust Bank
 Alice Weintertig, Central Florida Zoo
 Victor White, Orlando Sanford Airport
 Diane Wilcox, Seminole Office Products
 John Wilbur, Wayne Densch, Inc.
 Velma Williams, Sanford City Commissioner

Chamber Staff:

Ronald Rose - Executive Director
 Bonnie Rossman - Administrative Assistant
 Erin Doyan - Information Specialist
 Deb DeSantis - ChamberNews Editor



David A. Gierach, P.E., has been elected president of CPH Engineers, Inc., a Sanford-based consulting engineering firm with six offices in Florida and more than 100 employees serving an international clientele. Gierach succeeds Paul E. Porter, P.E., who remains active in the firm as chairman of the board of directors and executive vice president. Gierach joined the firm in 1987 following service in the U.S. Navy Civil Engineer Corps. His principal areas of expertise include planning, design and construction of water, wastewater and reclaimed-water projects and design and construction of road, commercial, office and land development projects. CPH Engineers has clients throughout the U.S., Guam and Puerto Rico. Headquartered in Sanford, CPH maintains branch offices in Orlando, DeLand, Jacksonville, Palm City and Cape Coral.



Sunbelt Rentals at 1501 West First Street has a new general manager, Eric Gooden Sr. Eric is from Kissimmee and wants to remind you that Sunbelt is open seven days a week: Monday-Friday from 6-6; Saturdays from 7-5 and Sundays 8-5. Call them at (407) 323-7774 for all your equipment needs.



The folks at Powell Office Supply at 117 Magnolia Ave. in downtown Sanford invite you to compare their prices before heading to one of the superstores. Give them a call at (407) 322-5842 to see how much you can save by shopping downtown.



Orlando Sanford International Airport is renovating and enlarging the existing information desk at the airport to combine it with the currency exchange booth. A second information booth is being added upstairs in the international departure lounge as well. Pan American Airways added service between Pittsburgh, Pa. and Sanford last month. One-way flights are \$138 and reservations can be made online at www.flypanam.com or by phone at 1-800-FLY PANAM. The airport announced recently that their expansion plans are right on schedule, with completion due early next year.

Sanford Flower Shop's Tim Donahoe invited to show work at AIFD convention

Kit Thompson of Sanford Flower Shop invites you to stop by and take a look at brother Tim Donahoe's design work. He's been honored by the American Institute of Floral Designers by an invitation to do a design program for their international convention to be held this year at the Marriott in Orlando July 2-5. Donahoe incorporates artwork into his floral designs, including stained glass. Kit says that she's proud of the fact that two of her designers, Tim and Jayne Myers, have both been inducted into the AIFD. So stop by the shop at 209 E. Commercial St. (next to the library) in Sanford, and take a look at Tim's work.



The Sanford Airport Authority sponsored the April 18 Community Development Committee meeting featuring a Mayor's Roundtable. Sanford Mayor Larry Dale spoke to more than 90 attendees, calling Sanford "the happening place in the next five to 10 years," as a result of the city's explosive growth. The mayor noted that OSI is the fastest-growing airport in the world and discussed other transportation and infrastructure improvements either underway or soon to begin, including the bridge over Lake Monroe, the Greenway's missing link, a five-year \$40 million plan for utility improvements and a partnership with Volusia County to control mounds on the waterfront. Beech's Catering supplied a delicious breakfast buffet and beverages were provided by Beech Plan of Florida and Cup-A-Coffee.



SANFORD EXPRESS LUBE, INC.
 A NICE PLACE ... FOR A CHANGE!
 AUTO SERVICE & REPAIR CENTER
 TIRE SERVICE LUBES
 407-323-FAST (3278)
 RUDY ARNOLD, Owner 2413 S. French Ave. (17-82) Sanford, FL 32771
 Fax 407-323-1783

Cup-A-Coffee
 P.O. Box 91600
 Lake Mary, FL 32795-0600
 Phone (407) 330-7515
CAC
 KENNETH L. GOGUE

Candlelight Catering, Inc.
 Sennet Williams, President
 (407) 324-4343 (904) 789-8666

William Howard's Jewelers
 Seminole Centre 407/321-3140
 3675 Orlando Drive Fax 407/330-2211
 Sanford, Florida 32773

The American Red Cross of Central Florida will hold an antique appraisal fair Saturday, May 6 from 10-4 at the Bessie D. Smith Cultural Arts Building at 119 W. Fifth St., Sanford. You can have up to three of your valuables evaluated by one of six professional appraisers for a donation of \$10 or more. All proceeds from this event benefit the American Red Cross of Central Florida. Verbal appraisals will be provided by professional appraisers Harriette Cordell, Curtis Cordell, Charles Billings, Ann Pullin, Betty Rutherford, Tereza Ivy Beck and Jennifer Williams, all of whom are donating their time and talent. No furniture items will be appraised. Refreshments will be provided by the American Red Cross and volunteers will be on hand to distribute disaster preparedness, water safety and volunteer information. For more information, contact Dawn Horan at (407) 894-4141, ext. 623.

WW

Alvarez and Associates, P.A., has recently opened for business in Sanford at 3828 Orlando Drive. Located in the Winn Dixie Marketplace at Lake Mary Boulevard and Hwy. 17-92 next to Walgreen's, Alvarez and Associates offer their clients assistance with bookkeeping, form filing to all tax authorities, unlimited consolidation, tax planning, tax preparation and audit assistance.

Owner Harry A. Alvarez and his staff of experts including Carolyn French and Michelle Fisher have a combined total of 25 years' experience in tax and accounting services. They keep abreast of all

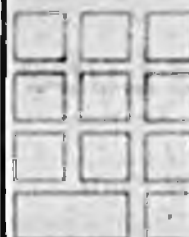
the latest IRS laws and are dedicated to helping new and small businesses succeed.

"We believe very strongly in the entrepreneurial spirit," Alvarez said. "Today's business owners are faced with all kinds of government regulations, recordkeeping, tax filings and personnel and management problems. You can count on us to solve your business problems — or direct you to the people who can — and to help make running your business easier and more profitable."

Alvarez and Associates, P.A., offers a complete line of services at competitive rates.

WW

Niptos Frame Shoppe and Gallery at 1313 Park Ave., Sanford, was the site of the Chamber's Business After Hours April 13. Owners Bobbi Glenn and Steven C. Umholtz hosted the event, which included refreshments served in their beautiful courtyard. Guests were entertained by Jerusha Elizabea, a vocal artist who also provides private instruction in voice, piano and percussion. Niptos Frame Shoppe and Gallery offers a wide variety of fine quality frames, original art, prints, and gifts, including antique recreations of 18th century toys, porcelain portrait dolls, marble and bronze vases, stained glass lamps and chandeliers, and marble and iron furniture and accessories. Bobbi extends the invitation to high school and middle school students to show their work in Niptos Art Court at no charge as a way to encourage young artists in the area. The shop is located just south of 13th Street on Park Avenue — just look for the Blues Brothers out front.



HARRY A. ALVAREZ

ALVAREZ & ASSOCIATES, P.A.
Accountants & Tax Consultants

3828 Orlando Drive
Sanford, Florida 32773
(407) 322-2417
Fax (407) 322-8454
E-mail taxwise@bellsouth.net

www.richplan.com

RICH PLAN

Healthy Food - Personal Service

Rich-United Corporation
401 West 13th Street
Sanford, Florida 32771
(407) 322-3663 or 800-664-3663
Fax (407) 321-9298

Seminole Carpet Service

"Use Us Once And You'll Always Use Us"

MICHAEL S. DROLET - Owner
(407) 321-4086
www.seminolecarpetservice.com

P.O. Box 951288
Lake Mary, FL 32796

Drolet named ambassador of the quarter

Michael Drolet, owner of Seminole Carpet Service, has been named Sanford/Seminole County Chamber of Commerce Ambassador of the Quarter, said Vicki Niemiec, Ambassador Chair.

"Michael has worked hard during the entire first quarter of 2000 by attending grand openings, ribbon-cuttings, Chamber luncheons and Business After Hours events. He's a great representative for the Chamber and his level of involvement as an ambassador serves as a fine example," Niemiec said.

An Orlando native, Drolet graduated from Edgewater High School and the University of Central Florida. He moved to Sanford in 1984 and started Seminole Carpet Service ten years ago.

"I believe the Chamber offers small businesses one of the most economical opportunities to gain exposure. I enjoy the interaction with other business people and the friendships that have developed," Drolet said.

His advice to other small-business owners? "If you get active, you'll get noticed."



Michael Drolet

The fact is that The Real Yellow Pages® from BellSouth® is read by more customers, is delivered to more households, and is the most proven business generator out there.

For more information on advertising in The Real Yellow Pages from BellSouth, please call (407) 322-REAL.

Now isn't that where you want your selling story to be?

© BELL SOUTH

The Real Yellow Pages

Find it at
www.yip.bellsouth.com



CEKIE CARTER

WHY SHOULD YOU ADVERTISE IN THE OTHER BOOKS WHEN YOUR CUSTOMERS READ THIS ONE?

EXPECT TO BE

IMPRESSED!

FREE ESTIMATES
LICENSED & INSURED

LAWN MASTERS
OF CENTRAL FL. INC.
COMMERCIAL ONLY™

Professional Lawn & Grounds Maintenance

MOWING, SOONING, TRIMMING, PRUNING, WEEDING

LANDSCAPING, IRRIGATION, FERTILIZING

Professional Uniformed Staff, Made of The Best Equipment

State Dispatch, Monthly Billing

Insurance Quality, Competitive Rates



(407) 328-5296

EST. 1980

Approved
Auto Repair

Full Service Oil Change
Computer Diagnostics
Tune Up
Transmission Service
AC Repair / Service
Brakes / CV Axles
Fuel System Cleaning

Castrol Xpress Lube
Quality Auto Repair

Theodore W. Kurtz

(407) 323-1380
(407) 323-2610 Fax

Sanford Auto Mall
2710 Hwy 17 SE
Sanford, FL 32773

We can now turn
VOICE MAIL
into
e-mail

call ...
Edie Iles
407-708-6144

Advanced Communications
Technology, Inc.

2884 Hawthorn Ave.
Sanford, FL 32773

323-7700
Fax 323-0842

The Student

- Residential & Commercial Signs • Computer Vinyl Signs
- Banners • Back Lettering • Truck Lettering • Window Lettering
- Plastic Signs • Magnetics Signs • Vinyl & Silo Signs
- Logos & Graphics & More

Adolphia
BUSINESS SOLUTIONS

Sharon Lawson
Account Executive

1800 Pembroke Drive
Suite 200
Orlando, FL 32816

Phone: 407-686-8847
Fax: 407-686-3882
Toll Free: 877-279-3888
Repair: 407-686-3881

Perfection in Print
writing, editing and graphic design

► Newsletters ► Directories ► Brochures

Deb DeSantis
714 S. Main Street
Sanford, FL 32771-2834

407.302.3092
desantis@bitstorm.net

Don't forget!

ChamberNews 2000
reaches an audience of 6,000+ every month...

Your ad could be here for as little as \$35!

Call Deb at 407 302-3092

Hispanic Internet usage soaring

A Forrester Research study of 80,000 U.S. households recently announced some surprising statistics about Internet use: it was learned that 47 percent of Hispanic households are online, compared with 43 percent for non-Hispanic whites. Hispanics at all income levels are more likely to be online than any other group except Asian-Americans. The study attributed this to the popularity of e-mail, the main reason across all groups for purchasing computers and going online. Puerto Rico, with a population of four million people, now has 500,000 Internet users, the highest per capita use among all Latin American countries, according to San Juan's El Nuevo Dia newspaper.

Seminole Herald, from page 1

The Herald, which boasts one of only two web presses in the county, also prints 75-100 other publications each month, including the Chamber News 2000. Three Volusia County newspapers, as well as dozens of high school, college and other specialty publications, roll off their presses each month.

Ken Holtzinger, the Herald's advertising and operations director, is particularly proud of the Seminole Super Shopper and the newspaper's new frequency program for regular advertisers.

"The Herald and the Shopper provide local businesses with an opportunity for cost-effective advertising with phenomenal exposure," Holtzinger said.

The Seminole Super Shopper is published each Wednesday and delivered to all Herald subscribers as well as non-subscribers, with a circulation of 20,000.

Local trade mission visits Puerto Rico

Thirty delegates in Central Florida's first extended trade mission to Puerto Rico visited San Juan in April to discuss ways Central Florida and other U.S. businesses can tap into or expand their reach into Puerto Rico's multibillion-dollar economy. "It's a great way for Central Florida businesses to see the opportunities for growth," said Mel Martinez, chairman of Orange County and head of the trade mission. The three days of talks with local business leaders, politicians and top commerce experts had the participants excited at the potential for doing business on the island.

"No one else can offer that kind of exposure for the money. We support Sanford and the Seminole County business community by keeping them up to date on what's happening businesswise locally and by providing them a venue for affordable advertising."

The Herald gladly hosts tours of their facility for local youth and civic groups. For more information on tours, or to subscribe to the paper, call the Herald at (407) 322-2611. Call Holtzinger or any of the advertising staff at the same number for rates and information.

Direct your letters to the editor to Editor Dan Ping via E-mail to shditor@aol.com or by regular mail to The Seminole Herald, Letters to the Editor, P.O. Box 1667, Sanford, Florida 32771-1667. You can also drop them off at their offices at 300 N. French Avenue in Sanford.

Take advantage of benefits of Chamber membership

Is your brochure or flyer on display at the Orlando Sanford Airport? At the Amtrak station? At the Chamber's Welcome Center downtown? They should be. And that's just one of the benefits of being a member of the Sanford/Seminole County Chamber of Commerce.

In addition, the Chamber staff gives hundreds of referrals every month and only Chamber members are eligible to be referred. That means when someone calls or stops by the Chamber asking a question "Where can I get my oil changed?" "Do you have any information about apartments in Sanford?" "Whom can I call to get help with my taxes?", Chamber staff provides them with your business card, brochure or other literature from their rack.

Each month, there's a Member Networking Luncheon as well. Your business can sponsor or host the luncheon and dozens of members will get to learn about you firsthand. The same is true of Business After Hours, a monthly networking opportunity usually held from 5:30 to 7 p.m. where members can get to know each other "after hours." Other sponsorship opportunities include the monthly Board of Directors and Community Development Committee meetings.

As a Chamber member, your business is automatically listed in the annual Buyers, Relocation and Visitors Guide. You're encouraged to place an advertisement in the guide as well. Over 30,000 of these guides are distributed annually to newcomers, visitors and other businesses. The 2000 edition is enclosed.

Did you know your chamber has a website? Take a look at www.sanfordchamber.com. Your business can be listed there and you can even have a link. Articles from ChamberNews 2000 are available for viewing there and advertising opportunities exist on our website as well. Our web site is currently under construction.

Do you plan to participate in the BusinessEspresso this July at the Seminole Towne Center Mall? It's a great opportunity to increase your exposure to potential customers. You'll soon be receiving information about booth registration.

Do you advertise in ChamberNews 2000? Your newsletter is a cost-effective way of getting your business name in front of 6,500 people. Because it's inserted into the Seminole Herald as well as mailed to all Chamber members, total circulation is approaching 7,000 or more. You can also have a flyer inserted in our monthly Chamber mailings for 50.

In addition, the Chamber participates in numerous community involvement activities like the Adopt-a-Street program and the St. Johns River Celebration clean-up. The Chamber's Education Committee is involved with the School Board in their Job Shadow Day, pairing students with local business people for a day, plus there's Teach-In, Career Day, Business Partners, the Mentor program and Realtors Tour.

Your Chamber gives you a voice in government as well with political candidate forums, Tallahassee Central Florida Day, the Washington, D.C. Fly-In, a lobbyist network, the Mayor's Roundtable and Town Meetings as well as State of the City and County Luncheons.

Want more? The annual Sanford Heritage Festival held in November provides some great sponsorship opportunities as well. This year's entertainers at the downtown Sanford street party will include the Charlie Daniels Band and Percy Sledge. Your booth at the festival will give your business exposure to an estimated 30,000 attendees.

And did you know that your membership in the Sanford/Seminole County Chamber automatically makes you a member of the Puerto Rican Chamber of Commerce-Central Florida and vice versa. By partnering with the PR Chamber, exposure and networking opportunities are increased for everyone involved.

Did you attend the annual Chamber Membership Awards Dinner and Installation of Officers in January? It was a night to remember and one that no chamber member should miss.

The Chamber offers myriad opportunities for involvement in government, education and business activities. All you have to do is take advantage of them — and watch your business grow!

Inside

Legals 3B
 Classifieds 3B-5B
 Cross Word 5B
 Comics 6B
 TV Listings 2B & 6B

Herald Sports

B

In Brief

LEE SCORES FOR LAKE BRANTLEY

ALTAMONTE SPRINGS - Senior Matt Lee scored the first goal of his two-year career on the boys varsity lacrosse team at Lake Brantley during the Patriots' 10-6 district winning game against Flagler-Palm Coast High School last Saturday. The young player was identified as scoring the goal in the game story.

RIGBY HEADED NORTH OF THE BORDER

MONTREAL - Former Lake Brantley High School star pitcher Brad Rigby was traded by the Kansas City Royals to the Montreal Expos on Tuesday. Rigby, who was an All-America at Georgia Tech, will be playing in the National League for the first time after stints with the Oakland Athletics and the Royals.

SOCCER KRAZE KICKS OFF SECOND SEASON

ORLANDO - The Central Florida Kraze opens its second season this Saturday night, April 29, at Edgewater High School in Orlando. Kick off is at 8:00 p.m. The team plays in the PDL of United Soccer Leagues. The roster is comprised of predominantly Central Florida players who play as amateurs. The Kraze coach is Joe Avallone who also coaches at Oviedo High School. In his first year (1999), Joe's team went 13-6 and finished 3rd in the PDL Southern division. Key players for 2000 include mid-fielder Donald McIntosh (Duke/Lake Mary HS), forward Tim Geitz (US National Team/Bishop Moore HS) and goalkeeper Didier Menard (Haitian National team/UCF/head girls soccer coach at Lake Howell HS). Tickets for Saturday's opener against the Broward County Wolfpack are \$4 adult, \$2 youth and \$15 for a season ticket and T-shirt. The game is the first of four play-in qualifying matches for the U.S. Open Cup.

CENTRAL FLORIDA KRAZE

2000 schedule

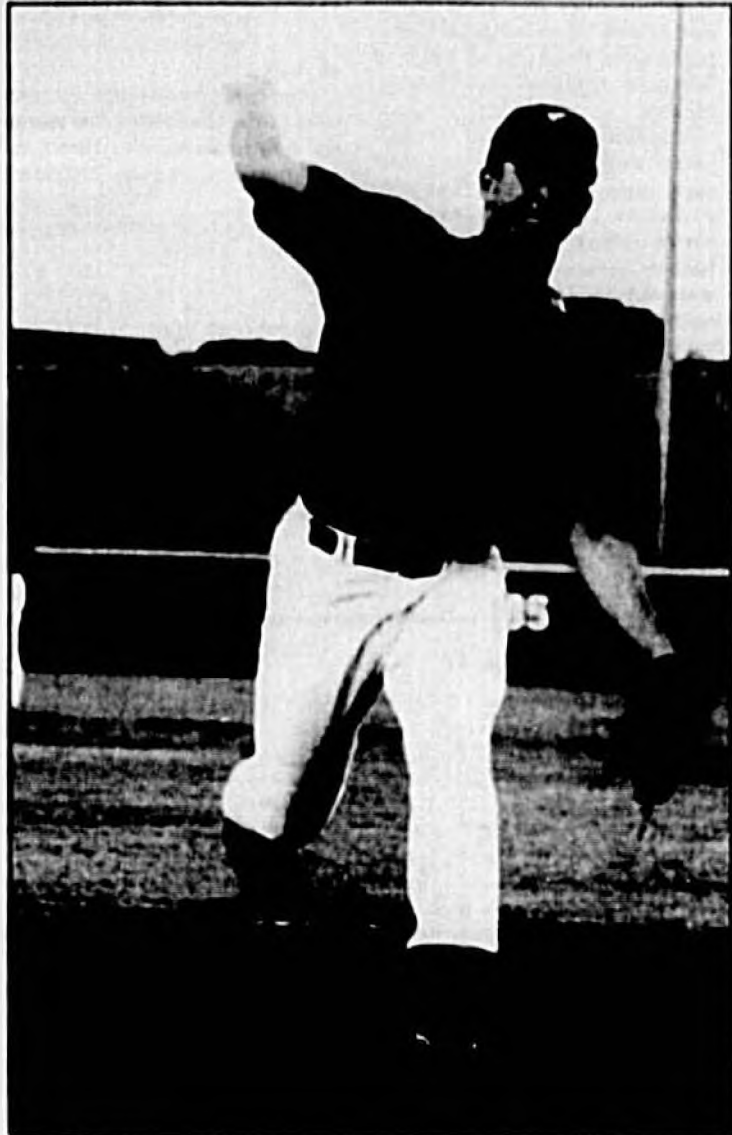
- APRIL**
 29 - BROWARD COUNTY*, 8 p.m.
- MAY**
 6 - at Tampa Bay*, 7:30 p.m.
 13 - at Bradenton*, 5 p.m.
 20 - SOUTH FLORIDA*, 8 p.m.
 27 - at Palm Beach, 7:30 p.m.
 28 - at Broward County, 2 p.m.
- JUNE**
 3 - SOUTH FLORIDA, 8 p.m.
 9 - BRADENTON, 8 p.m.
 10 - TAMPA BAY, 8 p.m.
 17 - MIAMI, 8 p.m.
 18 - at Tampa Bay, 2 p.m.
 24 - PALM BEACH, 8 p.m.
 30 - at Cocoa, 8 p.m.
- JULY**
 1 - BROWARD COUNTY, 7:30 p.m.
 8 - at Palm Beach, 7:30 p.m.
 15 - MIAMI, 8 p.m.
 16 - at Bradenton, 2 p.m.
 22 - at Miami, 7:30 p.m.
 23 - at South Florida, 2 p.m.
 28 - COCOA, 8 p.m.
- * U.S. Open Cup qualifying match
 Home games at Edgewater H.S., Orlando

JEFF BLAKE FOOTBALL CAMP

SANFORD - The Sanford Youth Football and Cheerleading Association (SYFA) will hold registrations for the Second Annual Jeff Blake Football Camp and the 2000 Pop Warner Football and Cheerleading Season. The final registration day will be on Saturday, April 29th and held at The Sports Authority, 100 North Entrance at the Seminole Towne Center Mall from 11 a.m. to 3 p.m. The football camp will be held on Saturday, May 6th and Sunday, May 7th at Seminole High School. Professional football players (both past and present), Seminole High School coaches, and the SYFA coaching staff will provide instruction. The five football and cheerleading teams will fill up early this season. You can pre-register with a \$40, non-refundable deposit. The balance will be due by June 1, 2000. Payment options are:
 Jeff Blake Football Camp only - \$90 for both days or \$50 for one day.
 2000 Pop Warner Football and Cheerleading Season - \$80 by May 31st, \$95 after June 1st.
 Camp and Pop Warner Season - \$160.
 See Briefs, Page 3B

DiFonso's double does it

Junior's blast gives Seminole its fourth straight 5A-5 title



Juniors Angelo Petracca (left) and Anthony DiFonso (right) ripped back-to-back, two-out doubles in the top of the sixth inning to account for four runs as Seminole High School broke a 1-1 tie and won

its fourth straight district championship, 6-1, over top-seeded Lake Howell Thursday night in the Class 5A-District 5 finale on Rinker-Stenstrom Field at Historic Sanford Memorial Stadium.

By Dean Smith
 SPORTS EDITOR

SANFORD - The cream has risen to the top again. For whatever reason the Seminole High School baseball team struggled for most of the regular season despite having the majority of its team back from last year. But when the carrot (in this case the district championship) was dangled in front of them, the Fighting Seminoles stood up and got the job done. Anthony DiFonso's two-out, two-run double in the top of the sixth inning broke a 1-1 tie and Angelo Petracca and Jeremy Meyers combined on a six-hitter as No. seeded Seminole knocked off No. 1 Lake Howell, 6-1, in the Championship Game of the Class 5A-District 5 Baseball Tournament on Rinker-Stenstrom Field at Historic Sanford Memorial Stadium Thursday night. The Championship was the fourth straight for the Tribe and seventh in eight years and evened the season record at 15-15. Seminole will host the runner-up from 5A-District 6, either Merrill Island or Satellite, next Tuesday evening in the Regional Quarterfinals at 7:30 p.m. on Alouin Field in the Seminole High School Baseball Complex. Despite the loss, the Silver Hawks (15-13) will also advance to the regional quarterfinals, traveling to the home of the 5A-6 champion (Merrill Island) or See Tribe, Page 2B

An upsetting evening in Industrial softball

By Dean Smith
 SPORTS EDITOR

SANFORD - Last Friday was not a good night to be an unbeaten team in the City of Sanford Recreation and Parks Department Spring Industrial Slow Pitch Softball League.

Russ Greaver's two-out single in the bottom of the seventh inning scored Ken Sauer Jr. with the winning run as Featherlite Metabale its first loss of the season, 10-9, in the opening game of the evening at Pinhurst Park. The TI Group then followed suit, scoring eight runs in the top of the seventh inning

to turn a 14-13 nail biter into a comfortable 22-13 lead and held on to win its first game of the year and hand the Wayne Densch Budmen their initial loss of the spring campaign, 22-14. The late game was the only one to go as expected as Invacare won by the run rule, 24-12 in five innings, but had to score 16

runs in the final two innings to erase a 10-9 BHM/Briar Corporation lead in the top of the fourth inning. With the upsets, Featherlite, Invacare, Metabale and the Wayne Densch Budmen are all tied for first place with 2-1 records. TI Group is right behind at 1-2, while See Industrial, Page 2B

Lake Mary men's slow pitch picks up where it left off

By Dean Smith
 SPORTS EDITOR

LAKE MARY - There is an old saying that goes, "a rolling stone gathers no moss." Well it also looks like an active softball player gathers no rust. After taking off just two weeks since the Polar Bear Tournament, the City of Lake Mary Department of Parks and Recreation Men's Spring Friday Night Slow Pitch Softball League opened last week at the Lake Mary Sports Complex with three high-scoring games. All 12 batters in the Blue Haven Pools line-up contributed at least one hit and one run scored to a 27-hit attack as it crushed new entry Polo's, 24-3. In a game stopped in the top of the fourth inning by the 20-run rule. Fairway Jeep did even better in the middle game as all 10 batters its line-up had at least two hits and eight had at least four hits in an amazing 39-hit outburst to double the score on Nice & Easy, which had 19 hits, 30-15. In the late game, Hill's Gang, which had 17 hits, scored five runs in the top of the sixth

DEDELOW TWINS HEADED WEST



The Dedelow twins, Beverly (seated, left) and Kristine (seated, right), who helped the Winter Springs girls basketball team win back-to-back state championships, have decided on Snow College in Ephraim, Utah to begin their college careers.

On hand for the recent scholarship signing ceremony were (standing, left to right) Winter Springs Athletic Director Rick Tribit, parents Ed and Carol Dedelow and Winter Springs head girls basketball coach Betsy Hughes.

Herald photo by Nick Shihadeh

See Lake Mary, Page 3B

CLASSIFIED 322-2611

Seminole Herald

You can fax your ad to 407-323-9408
300 N. French Ave., Sanford 32771 • P. O. Box 1667, Sanford 32772
Our office is open to serve you Monday through Friday, 8 am - 5 pm

DEADLINES:
For Tuesday's edition, the deadline is Monday at noon
For Wednesday's edition, the deadline is Tuesday at noon
For Thursday's edition, the deadline is Wednesday at noon
For Friday's edition, the deadline is Thursday at noon
For the weekend edition, the deadline is Friday at noon

Paying for your classified ad:
We gladly accept Mastercard or Visa. We also will take cash or a personal check. Advertisers who wish to be billed can make arrangements at the time their ad is placed. Please keep in mind that ads in the Personnel (class. 21), Business Opportunities (class. 55) & Garage Sales (217) require payment in advance.
In the event you need to change your ad:
If you need to change your ad while it is running, please give us a call and we will make the change for the next available edition. Please check your ad on the first day of publication. If you find an error, please call us immediately and we will correct the error for the next publication. We are responsible for the first insertion only and only for the cost of the first insertion.

- 11 Home Health Care
- 12 Elderly Care
- 13 Health & Beauty
- 14 For Sale
- 15 Cemetery Lots
- 16 Reminder Services
- 18 Luxury Items
- 19 Computer/TV
- 21 Personal
- 22 Health Care
- 23 Lost & Found
- 25 Special Notices
- 27 Nursery & Child Care
- 33 Weight Management
- 35 Hypnosis
- 39 Health Insurance
- 43 Legal Services

FINANCIAL

- 45 Debt Consolidation
- 55 Business Opportunities
- 57 Opportunities
- 59 Financial Services
- 61 Money to Lend
- 63 Mortgages

EMPLOYMENT

- 67 Career Consultants
- 69 Resumes
- 70 Education & Training
- 71 Help Wanted
- 73 Employment Wanted

RENTALS

- 91 Apartments/Homes To Share
- 93 Rooms For Rent
- 95 Roommate Wanted
- 96 Retirement Homes
- 97 Apartments - Furnished
- 99 Apartments - Unfurnished
- 100 Condominium Rentals
- 101 Houses Furnished
- 103 Houses Unfurnished
- 105 Digs/Triples
- 107 Mobile Homes For Rent
- 111 Rental Vacations
- 114 Warehouse/Rental Space
- 115 Industrial Rentals

- 117 Commercial Rentals
- 118 Office Space For Rent
- 119 Pasture For Rent
- 123 Wanted To Rent
- 125 Lease To Own
- 127 Storage/Office For Rent

REAL ESTATE

- 141 Homes For Sale
- 143 Out of State Property For Sale
- 145 Resort Property For Sale
- 147 Industrial Property For Sale
- 148 Mobile Home Lots For Sale
- 149 Commercial Property For Sale
- 151 Investment Property For Sale
- 153 Acreage Lot For Sale
- 154 Open House
- 155 Condominiums For Sale
- 157 Mobile Homes For Sale
- 159 Real Estate Wanted
- 160 Business For Sale
- 163 Waterfront Property For Sale
- 165 Duplex For Sale

MERCHANDISE

- 181 Appliances & Furniture For Sale
- 183 Television & Stereo/Video
- 185 Computers For Sale
- 187 Sporting Goods
- 189 Office Supplies
- 191 Building Materials
- 193 Lawn & Garden
- 195 Machine Work
- 197 Restaurant Equipment

MISCELLANEOUS

- 199 Pets & Supplies
- 200 Livestock/Farm Supplies
- 201 Horses
- 205 Heavy Machinery
- 207 Jewelry
- 209 Wearing Apparel
- 211 Antiques/Collectibles
- 213 Books & Accessories
- 217 Garage Sales
- 219 Wanted to Buy

- 221 Good Things to Eat
- 222 Musical Instruments
- 223 Miscellaneous
- 229 Auctions

AUTOMOTIVE

- 231 Cars For Sale
- 234 Automotive Accessories
- 236 Truck/Buses/Vans For Sale
- 238 Car Rentals
- 239 Vehicles Wanted
- 238 Motorcycles/ATVs For Sale
- 240 Boat Rentals
- 241 Rac. Vehicles/Campers For Sale
- 243 Trailers For Sale
- 245 Farm Equipment

SERVICES

- 252 Accounting
- 253 Additions & Remodeling
- 254 Air Conditioning

- 256 Alterations
- 256 Appliance Repair
- 257 Auto Elect. Repair
- 258 Automotive
- 260 Bush Hogging
- 261 Computer Consulting
- 262 Cabinets
- 263 Carpentry
- 264 Carpet & Installations
- 265 Carpet Cleaning
- 266 Ceiling Repair
- 267 Ceramic Tile
- 268 Child Care Centers
- 269 Clearing Services
- 270 Concrete
- 271 Construction
- 272 Delivery Services
- 275 Drywall
- 276 Electrical
- 277 Fence
- 278 Handy Man
- 279 Heating
- 280 Home Improvements
- 281 Irrigation & Repair
- 282 Janitorial Services
- 283 Jewelry & Repair
- 284 Landscape Clearing
- 285 Landscaping
- 288 Laundry Services
- 287 Lawn Services
- 288 Legal Services
- 289 Locksmith
- 290 Masonry
- 291 Moving/Storage
- 292 Moving & Storage
- 293 Oil Lube & Filter
- 294 Painting
- 295 Paper Hanging
- 297 Pest Control
- 298 Piano/Organ Tuning
- 299 Plumbing
- 300 Pressure Cleaning
- 301 Roofing
- 302 Screen & Glass Work
- 303 Secretarial & Typing
- 304 Siding
- 305 Small Business
- 306 Stained Glass
- 307 Swimming Pool Services
- 308 Tumble Repair
- 309 Transportation
- 311 Travel
- 312 Tree Service
- 313 TV/Radio
- 314 Upholstery
- 316 Welding & Sheet Metal
- 318 Wood Drilling
- 319 Window Washing & Trimming

71-HELP WANTED

Legal Billing/Payroll Clerk: Healthcare law firm. Must have QuickBooks/MS Word exp. 20 hrs/week. Flexible schedule. Great pay, no benefits. Fax resume: 407-805-9030 or Email: jpc@magnet.net

71-HELP WANTED

READY STAFFING:
A progressive staffing company is looking for employees in construction, warehousing, manufacturing, hospitality & much more. Apply in person at 1180 French Ave., Sanford. For details call 407-324-5864

71-HELP WANTED

Randall Mechanical, Inc.
115 Casselton Road Sanford
Foreman for multi-family air conditioning projects. Long term, excellent pay and benefits. Fax resume to 407-321-1918 or call Marty Davis 407-321-6299

71-HELP WANTED

WELDERS SIGNING BONUS \$250
MIG exp. necessary. Good pay & benefits. 407-299-1162
Work at Home (Determine your own income). Home based and teachable. Step by step training. 1-888-957-2650
Work from Home using your computer. \$600 per mo. 1-888-834-2176. www.wagfromhome.com
Work from Home using your computer. \$500 per mo. www.startgog.com 1-888-784-8401

103-HOUSES-UNFURNISHED

123 1/2 High Bl., 1.580 sq. ft. 3/4 garage, hardwood floor, 1232 sq. ft. \$810,000. Call 407-321-5288
3/4 acre in city area, near new police sub station, great area. Pkts. near \$375. 407-321-4757

103-HOUSES-UNFURNISHED

Sanford 2 1/2 BDRM, 5500 sq. ft. \$275,000. No pets. Call 407-321-5288
Sanford 2 1/2 BDRM, 5500 sq. ft. \$275,000. No pets. Call 407-321-5288

Stairs Property Management

32 Home, Reg. Dated Restricted Community. Amenities Available at local \$100/week.
1/2 Cottage, No Smoking, VEH. \$100/week.
37 Home, \$100/week.
407-323-7322

DOYLE'S RENTALS

Sanford 1 1/2 BDRM, 5500 sq. ft. \$275,000. No pets. Call 407-321-5288
Deltona 3 1/2 BDRM, 5500 sq. ft. \$275,000. No pets. Call 407-321-5288
DOYLE REALTY, INC. (407) 323-9496 WE RENT HOMES

117-COMMERCIAL-RENTALS

2800 Park Drive, Sanford office or Retail, 1100 sq. ft. New Carpet \$700/week, Jan Dwyer (407) Realty Inc. 407-323-2668

118-CHURCH SPACE FOR RENT

Lake Mary Daytime Center, New 700, 1070, 1175 sq. ft. or combo lot #9. 407-233-2385

141-HOMES FOR SALE

3 HOME LOANS
90 Day Payment Available
3 to 4 BDRM, Homes Awd
Easy Quality Construction OR
CALL TODAY!
The Home you're looking for is here. Call today for a free recorded message. 407-622-1237, 8 a.m. - 8 p.m.

141-HOMES FOR SALE

4 BR 1 1/2 BA, L.P., L.P. AC, tile, new \$1750 down, \$600/month. 407-788-7022
Home for Sale: 814 Cypress Ave., San. 279. Call to rent to own. Call 407-324-8867

THE CLASSIFIEDS-REVIEW
Standard in My opinion, 3 1/2 car garage, newer home needs TLC. Approx. \$80k. Cash sale for \$60k. 800-800-8000
Sanford 3 1/2 BDRM, new CPB, newly renovated \$1,000 down \$500/month
Altamonte-4 1/2 central air, new carpet. Totally renovated \$1500 down and \$500 mo. 407-444-8838

APARTMENT RENTALS

BRAM TOWERS APARTMENTS
Now accepting applications for qualified people over 62 years old. All utilities included in rent. Twenty four hour desk clerk service provided.
Address: 319 East First Street Sanford, FL 32771
Phone: (407) 323-4430

Country Style City Living
Convenient Spacious Affordable
1/2 MONTH FREE RENT WITH 1 YR. LEASE OR ASK ABOUT OUR MOVE-IN SPECIAL PLEASE PRESENT THIS AD
* Spacious Apartments with large Closets * Lake Front * Volleyball * Sparkling Pool * Tennis Courts
AIRPORT BLVD. Country Lake Apts. AIRPORT BLVD.
S.H.S. LIVE OAK BLVD.
Country Lake Apartments
2714 Ridgewood Ave., Sanford • 330-5264

93-ROOMS FOR RENT

Weekly Rentals Starting @ \$82/week, Masters Downtown 407-338-6423

EFFICIENCY W/ MAINT SERVICE

Convenient Location 407-321-4800

97-APARTMENTS-FURNISHED

1 BDRM Cottage-7 mi out of town \$100/week all bills free. Good for top person. Call 407-330-1888

99-APARTMENTS-UNFURNISHED

MARRIERS VILLAGE
LAKE AREA 1 BDRM (SINGLE) 2 BDRM (SINGLE) AND UP. Call 407-323-8870

101-HOUSES-FURNISHED

2 1/2 BDRM, security gates & lights. Also efficiency for single adult. No pets \$600 & \$400. Utilities included. 407-829-0127

103-HOUSES-UNFURNISHED

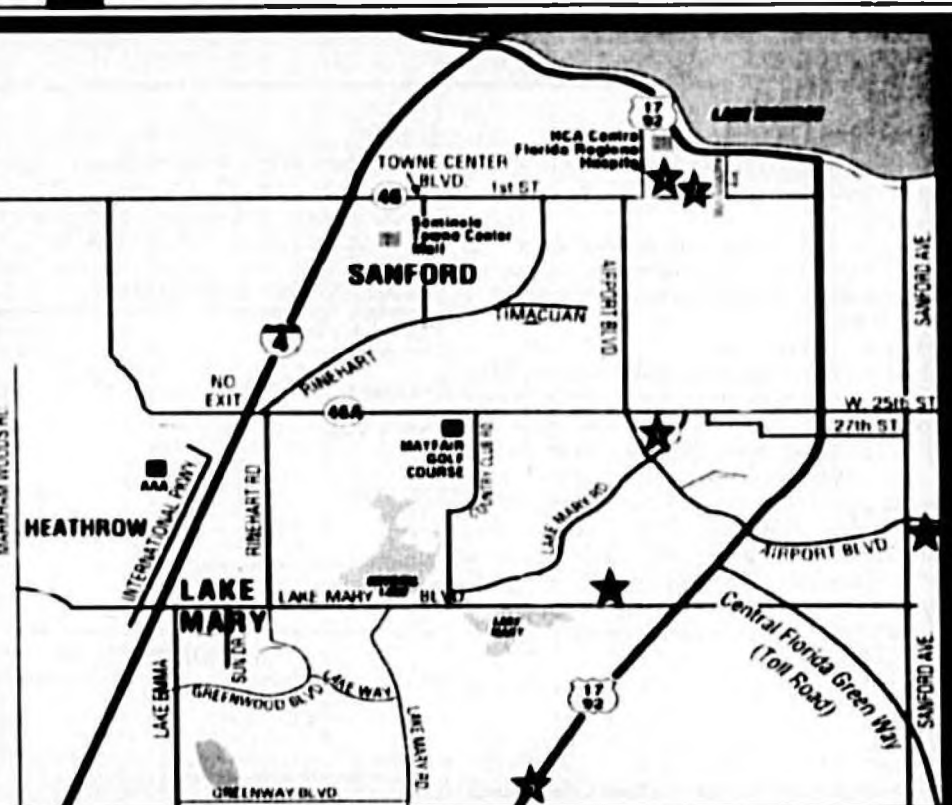
NOTICE
All rental and real estate advertisements are subject to the Federal Fair Housing Act, which makes it illegal to advertise any preference, limitation, or discrimination based on race, color, religion, sex, handicap, familial status or national origin.

407-321-0759

Servello & Son
COME GROW WITH US
BUSINESS IS BOOMING!
Irrigation Service Technicians
Clean Lines / Low Overhead
Servello & Son Inc. is an established commercial landscape maintenance company with full-time opportunities now available for dependable, team oriented members in a drug-free environment. A valid Florida driver's license is required.
Benefits include:
• Paid Sick Days, Holidays, Vacations, Health, Dental & Vision Insurance
Apply 10am - 5pm - Mon. - Fri.
954 Shadick Drive, Orange City
904-774-5880

EXTRA... EXTRA... READ ALL ABOUT IT!
Inserters Needed!
Part-time 10 - 20 Hours Per Week
This is a part-time position with flexible hours. Individuals should be able to lift a minimum of 40 pounds.
Apply In Person:
The Seminole Herald
300 N. French Ave. Sanford, Florida

RENTAL CENTRAL The APARTMENT GUIDE



CARRIERS WANTED
EARN SOME EXTRA MONEY!
Newspaper delivery for established routes in the Sanford area. Earn money while taking a drive in the country or city. Must have dependable transportation, organizational skills and be available for afternoon delivery.
Routes Available:
Sanford • Altamonte Springs
Longwood • Winter Springs • Oviedo
Apply in person at:
Seminole Herald
300 N. French Ave. P.O. Box 1667 • Sanford, FL 32771

DALTON PLACE 12411 Groveview Way Sanford, FL 32773 (407) 321-0584	HIDDEN PINES APARTMENTS 321 Hidden Pines Circle Casselberry, Florida 32707 Telephone: (407) 699-8245
SANFORD LANDING APARTMENTS 1800 W. First St., Sanford, FL 32771 407-321-8220	To advertise in the Apartment Guide call Melinda Morris at (407) 322-2611
SANFORD COURT APARTMENTS 3291 S. Sanford Ave., Sanford, FL 32773 323-3301	
TOWN CENTRE APARTMENTS 100 Wilmer Circle Sanford, FL 32771 407-322-8696	
WINDCHASE APARTMENTS 100 Windchase Blvd., Sanford, FL 32773 407-328-8818	



FRANK AND ERNEST



ROBOT MAN



by Jim Meddick



CRANKSHAFT



by Bob Thaves



BLOWDRE



by Chet Young



PEANUTS



by Charles M. Schultz



FOXTROT



By Bill Amend



THE BORN LOSER



by Art Searson



BEEBLE BAILEY



by Mort Walker



ARLO & JANS



by Jimmy Johnson



GARFIELD



by Jim Davis



by Bob Thaves



by Bob Thaves



by Bob Thaves



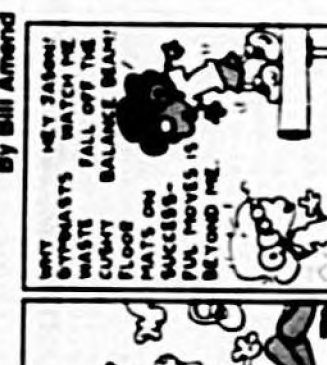
by Bob Thaves



by Bob Thaves



by Bob Thaves



by Bob Thaves



by Bob Thaves



by Bob Thaves



by Bob Thaves



by Bob Thaves



by Bob Thaves



by Bob Thaves



by Bob Thaves

