

Country Getting Money's Worth? U.S. Faces National Health Crisis

WASHINGTON, Oct. 27.—The House Committee on Education and Labor today reported a bill to create a national health crisis commission. The bill, H.R. 10000, is the first step in a program to study the health care system and to recommend ways to improve it.

\$600 Per Pupil Needed

TALLAHASSEE (AP)—The House Committee on Education and Labor today reported a bill to create a national health crisis commission. The bill, H.R. 10000, is the first step in a program to study the health care system and to recommend ways to improve it.

Local Money Market Unchanged

By STEPHEN BERRY
The money market in Tallahassee today was unchanged from the previous day. The Federal Reserve Bank of Atlanta reported that the national average for the week ending Oct. 26 was 3.5 percent, about 200 million.

Largen Appointment Due; Local MDs Up In Arms

By STEPHEN BERRY
The appointment of a new medical director for the local health department is expected to be a controversial one. Local medical doctors are up in arms over the possibility of a change in the position.

200 Million Persons

WASHINGTON (AP)—The United States celebrates today a milestone as experts contend that the nation's population has reached 200 million persons.

Milestone Is Observed Two Years Behind Time

WASHINGTON (AP)—The United States celebrates today a milestone as experts contend that the nation's population has reached 200 million persons. The milestone is observed two years behind time.

Firemen Halt Four Blazes

Sanford firemen today halted four blazes in the city. The blazes were caused by faulty wiring and carelessness. The fire department is investigating the causes.

Hospital Notes

NOVEMBER 17, 1967
Deaths: Mrs. Mary C. Williams, 82, died at St. Peter's Hospital. Mrs. Mary C. Williams was a resident of Sanford for many years.

NOVEMBER 18, 1967
Deaths: Mrs. Mary C. Williams, 82, died at St. Peter's Hospital. Mrs. Mary C. Williams was a resident of Sanford for many years.

Romney Plunges; Rocky Praised

WASHINGTON, Oct. 27.—Sen. George Romney today plunged into the battle for the Republican nomination for the White House. Romney's campaign is being supported by many Republicans, including Sen. J. Lee Rankin.

Population Clock in the Commerce Dept

WASHINGTON (AP)—The Commerce Department today announced that it has installed a population clock in its Washington office. The clock is believed to be the first of its kind in the United States.

200 Million Persons

WASHINGTON (AP)—The United States celebrates today a milestone as experts contend that the nation's population has reached 200 million persons.

Milestone Is Observed Two Years Behind Time

WASHINGTON (AP)—The United States celebrates today a milestone as experts contend that the nation's population has reached 200 million persons. The milestone is observed two years behind time.

Firemen Halt Four Blazes

Sanford firemen today halted four blazes in the city. The blazes were caused by faulty wiring and carelessness. The fire department is investigating the causes.

Hospital Notes

NOVEMBER 17, 1967
Deaths: Mrs. Mary C. Williams, 82, died at St. Peter's Hospital. Mrs. Mary C. Williams was a resident of Sanford for many years.

NOVEMBER 18, 1967
Deaths: Mrs. Mary C. Williams, 82, died at St. Peter's Hospital. Mrs. Mary C. Williams was a resident of Sanford for many years.

Fair Open With Politics A-Flot

WASHINGTON, Oct. 27.—The House Committee on Education and Labor today reported a bill to create a national health crisis commission. The bill, H.R. 10000, is the first step in a program to study the health care system and to recommend ways to improve it.

Fair Open With Politics A-Flot

WASHINGTON, Oct. 27.—The House Committee on Education and Labor today reported a bill to create a national health crisis commission. The bill, H.R. 10000, is the first step in a program to study the health care system and to recommend ways to improve it.

Fair Open With Politics A-Flot

WASHINGTON, Oct. 27.—The House Committee on Education and Labor today reported a bill to create a national health crisis commission. The bill, H.R. 10000, is the first step in a program to study the health care system and to recommend ways to improve it.

Fair Open With Politics A-Flot

WASHINGTON, Oct. 27.—The House Committee on Education and Labor today reported a bill to create a national health crisis commission. The bill, H.R. 10000, is the first step in a program to study the health care system and to recommend ways to improve it.

Fair Open With Politics A-Flot

WASHINGTON, Oct. 27.—The House Committee on Education and Labor today reported a bill to create a national health crisis commission. The bill, H.R. 10000, is the first step in a program to study the health care system and to recommend ways to improve it.

Fair Open With Politics A-Flot

WASHINGTON, Oct. 27.—The House Committee on Education and Labor today reported a bill to create a national health crisis commission. The bill, H.R. 10000, is the first step in a program to study the health care system and to recommend ways to improve it.

Fair Open With Politics A-Flot

WASHINGTON, Oct. 27.—The House Committee on Education and Labor today reported a bill to create a national health crisis commission. The bill, H.R. 10000, is the first step in a program to study the health care system and to recommend ways to improve it.

Fair Open With Politics A-Flot

WASHINGTON, Oct. 27.—The House Committee on Education and Labor today reported a bill to create a national health crisis commission. The bill, H.R. 10000, is the first step in a program to study the health care system and to recommend ways to improve it.

Fair Open With Politics A-Flot

WASHINGTON, Oct. 27.—The House Committee on Education and Labor today reported a bill to create a national health crisis commission. The bill, H.R. 10000, is the first step in a program to study the health care system and to recommend ways to improve it.

Fair Open With Politics A-Flot

WASHINGTON, Oct. 27.—The House Committee on Education and Labor today reported a bill to create a national health crisis commission. The bill, H.R. 10000, is the first step in a program to study the health care system and to recommend ways to improve it.

Fair Open With Politics A-Flot

WASHINGTON, Oct. 27.—The House Committee on Education and Labor today reported a bill to create a national health crisis commission. The bill, H.R. 10000, is the first step in a program to study the health care system and to recommend ways to improve it.

Fair Open With Politics A-Flot


WASHINGTON, Oct. 27.—The House Committee on Education and Labor today reported a bill to create a national health crisis commission. The bill, H.R. 10000, is the first step in a program to study the health care system and to recommend ways to improve it.

Fair Open With Politics A-Flot

WASHINGTON, Oct. 27.—The House Committee on Education and Labor today reported a bill to create a national health crisis commission. The bill, H.R. 10000, is the first step in a program to study the health care system and to recommend ways to improve it.

Fair Open With Politics A-Flot

WASHINGTON, Oct. 27.—The House Committee on Education and Labor today reported a bill to create a national health crisis commission. The bill, H.R. 10000, is the first step in a program to study the health care system and to recommend ways to improve it.



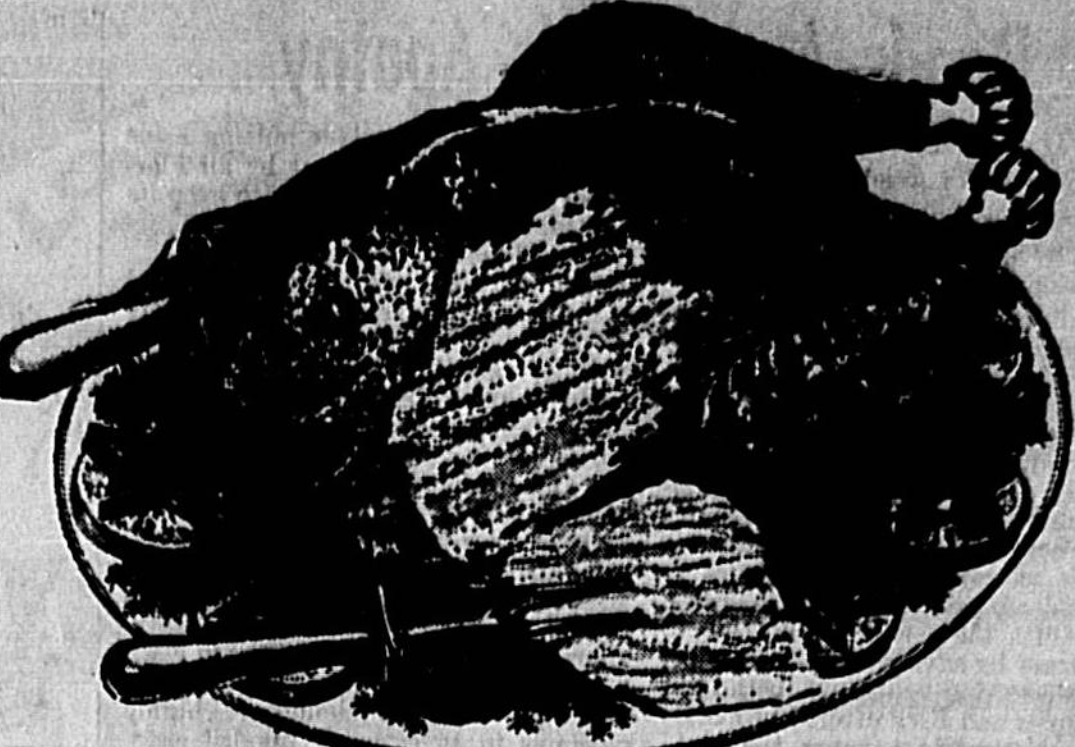
SAVE AT WINN-DIXIE FOOD STORES

USDA GRADE "A" QUICK FROZEN W-D BROAD BREASTED TURKEYS 17 LBS. AND UP

28

18-14 POUND AVERAGE WEIGHT **35¢**

QUANTITY RIGHTS RESERVED—PRICES GOOD THRU NOV. 22





USDA CHOICE W-D BRAND E-Z CARVE RIB ROAST

lb. **98¢**

PRE-HOLIDAY POULTRY SALE

USDA GRADE A D. & D. W-D BRAND LARGE 4-6 Lbs. Avg.

BAKING HENS 39¢

LEG QUARTERS 29¢

YOUNG TURKEYS 49¢

Gizzards 33¢ Wings 39¢

1-Lb. Box COPLAND FRESH Pork Sausage 49¢	FRESH BOSTON BUTT Pork Roast . . 49¢
8-oz. Can STANDARD APALACHOLA Oysters 69¢	QUARTER LOIN SLICED Pork Chops . . 69¢
8-oz. Pkg. KRAFT'S PHILADELPHIA Cream Cheese 3/1	10-COUNT BUTTER-MEADOW Can Biscuits 2/39¢
1-Lb. Pkg. COPLAND Sliced Bologna 59¢	14-oz. PALMETTO FARMS Pimento Cheese 69¢

W-D BRAND . . 100 Extra Stamps With Coupon

Ground Beef 5^{lb} \$1⁹⁹



Regular 2/49¢ . . 16-oz. Cone THRIFTY MAID CRANBERRY Sauce . . 2/29¢	2 1/2-lb. FOR THANKSGIVING Fruit Cakes 99¢
Regular 27¢ . . No. 303 Cone OCEAN SPRAY CRANBERRY Sauce . . 2/39¢	8-oz. DIXIE DARLING MIX FOR Stuffing . . 29¢
Regular 2/35¢ . . No. 303 Cone LIBBY Pumpkin 2/25¢	8-oz. PEPPERIDGE FARM MIX FOR Stuffing . . 33¢
No. 2 1/4 THRIFTY MAID SWEET Potatoes 3/69¢	1-Lb. DIXIE DARLING NOT SLICED STUFFING Bread . . 2/39¢

ALL STORES WILL BE CLOSED THANKSGIVING

100 EXTRA TOP VALUE STAMPS

MEAT PIES 5/1

MORTON FAMILY SIZE MARBLE HEAT OR **PUMPKIN PIE . . 3/1**

8-oz. Pkg. MORTON SPAGHETTI & MEAT OR **MACARONI . . . 5/1**

PREPARED FARM FRESH **3-LAYER CAKE 89¢**

2 1/2-lb. FRENCH FRY **POTATOES . . . 3/88¢**

2 1/2-lb. Pkg. PAN RUSH **BREADED SHRIMP "1"**

MONDAY NIGHT SPECIAL

6 TO 9 P.M. ONLY

All Ladies' **FLATS**

All new styles and colors

Just Arrived—\$3.99 and Up

\$100 OFF

LET "CRACKER" GIVE YOU A FIT!

GOODY'S

SHOES FOR ALL THE FAMILY

SANFORD FLA. ONLY

YOUR DOLLARS WORTH MORE AT YOUR TOP VALUE STORE



Highway 17-92, Longwood French Ave. & 25th Palmetto Ave. & 3rd St. 400 E. Pine St. DeLeon

SAVING
28¢
 18 to 24 lb size
 10 to 16 lb TURKEYS

SKINLESS FRANKS 38¢
SLICED BACON 43¢
FRYERS 29¢
CHUCK ROAST 48¢

CANNED HAM 5 lb can \$3.69
TURKEYS 48¢
ROASTERS 77¢

SEASON OF FULL CUT ROUND STEAKS 98¢
CHUCK ROAST 48¢
FRYERS 29¢
SLICED PINEAPPLE 4¢

COMPARE! TURKEYS
 18 to 24 lb size
 10 to 16 lb TURKEYS

COMPARE! TURKEYS
 18 to 24 lb size
 10 to 16 lb TURKEYS

COMPARE! TURKEYS
 18 to 24 lb size
 10 to 16 lb TURKEYS

COMPARE! TURKEYS
 18 to 24 lb size
 10 to 16 lb TURKEYS

COMPARE! TURKEYS
 18 to 24 lb size
 10 to 16 lb TURKEYS

COMPARE! TURKEYS
 18 to 24 lb size
 10 to 16 lb TURKEYS

COMPARE! TURKEYS
 18 to 24 lb size
 10 to 16 lb TURKEYS

COMPARE! TURKEYS
 18 to 24 lb size
 10 to 16 lb TURKEYS

COMPARE! TURKEYS
 18 to 24 lb size
 10 to 16 lb TURKEYS

COMPARE! TURKEYS
 18 to 24 lb size
 10 to 16 lb TURKEYS

COMPARE! TURKEYS
 18 to 24 lb size
 10 to 16 lb TURKEYS

COMPARE! TURKEYS
 18 to 24 lb size
 10 to 16 lb TURKEYS

COMPARE! TURKEYS
 18 to 24 lb size
 10 to 16 lb TURKEYS

COMPARE! TURKEYS
 18 to 24 lb size
 10 to 16 lb TURKEYS

COMPARE! TURKEYS
 18 to 24 lb size
 10 to 16 lb TURKEYS

COMPARE! TURKEYS
 18 to 24 lb size
 10 to 16 lb TURKEYS

COMPARE! TURKEYS
 18 to 24 lb size
 10 to 16 lb TURKEYS

COMPARE! TURKEYS
 18 to 24 lb size
 10 to 16 lb TURKEYS

COMPARE! TURKEYS
 18 to 24 lb size
 10 to 16 lb TURKEYS

COMPARE! TURKEYS
 18 to 24 lb size
 10 to 16 lb TURKEYS

COMPARE! TURKEYS
 18 to 24 lb size
 10 to 16 lb TURKEYS

COMPARE! TURKEYS
 18 to 24 lb size
 10 to 16 lb TURKEYS

COMPARE! TURKEYS
 18 to 24 lb size
 10 to 16 lb TURKEYS

Reds Strike Gls Hard Blow; Jets Pound Hanoi, Haiphong

SAMPOA (AP) — North Vietnamese forces surrounded U.S. paratroopers in a battle near the Cambodian border in South Vietnam's central highlands today, and with more than 200 enemy soldiers and several heavy weapons inflicted heavy losses. An American soldier was reported to have been killed.

The battalion of the U.S. 17th Airborne Brigade was cut off by 200 enemy soldiers. The paratroopers arrived to break the Communist attack and bring out food and wounded. Heavy enemy ground forces were reported to have surrounded the paratroopers.

The fighting, perhaps the most vicious yet in the highlands campaign, came as U.S. planes bombed the Hanoi-Haiphong area for the fifth straight day on Sunday. The attacks hit the U.S. perimeter, possibly by causing heavy casualties. It could not be determined immediately what caused the blast.

The fighting, perhaps the most vicious yet in the highlands campaign, came as U.S. planes bombed the Hanoi-Haiphong area for the fifth straight day on Sunday. The attacks hit the U.S. perimeter, possibly by causing heavy casualties. It could not be determined immediately what caused the blast.

Repercussions Follow Pound Devaluation

Federal Reserve Acts To Protect Dollar Value

WASHINGTON (AP) — The Federal Reserve Board's discount rate moved up a notch today in what officials described as an effort to protect the dollar in the wake of the British pound devaluation.

The rate moved from 4 to 4 1/2 percent. The move was designed to prevent a heavy flow of dollars overseas in search of higher interest rates. It's expected to have little immediate effect on consumer interest rates in this country.

When it devalued the pound on Saturday from \$2.80 to \$2.40, Britain also raised its discount rate from 4 to 6 percent.

The U.S. discount rate is the interest commercial banks must pay the Federal Reserve for loans. Other rates are pegged upward from it.

In this case, however, the board is bringing its rate more in line with interest rates elsewhere in the world economy rather than tracking new ground.

Interest rates generally are at their highest level in almost half a century.

But some officials said the higher discount could tend to slow the long run toward an increase in rates consumers pay for loans. In this connection it could have an anti-inflationary effect.

The Federal Reserve acted at an emergency Saturday meeting and its decision was announced Sunday.

There was an immediate reaction from the White House.

A statement by Treasury Secretary Henry H. Fowler said nothing about the discount rate and mentioned worldwide cooperation to help the British. He expressed confidence the United Kingdom would achieve its objective of improved competition in world markets.

Chairman Wright Patman, D-Texas, in the House Banking Committee, a frequent critic of Federal Reserve Board policy, said of the discount rate rise: "I don't like it... the people are fed up with crushing interest rates."

Patman said the board used the devaluation of the pound as an excuse to raise the rate.

The board's action is effective today at 10 of the 12 Federal Reserve banks. Banks at Philadelphia and St. Louis are expected to follow suit soon.

Officials said the action is "intended as a demonstration that the United States is going to do what it can to maintain the dollar in international markets."

"This serves notice that the nation is not willing to let dollars flow out of here willy nilly," one source said in describing the move as a "modest precautionary step."

A rise in the discount rate from 4 to 4 1/2 percent on Dec. 6, 1965, coupled with other tight money policies, sent interest rates last year to a 40-year high. The discount rate was returned to 4 percent last April after interest rates and inflationary pressures had subsided.

Since then, however, some interest rates have drifted even higher than they did last year. There was no indication in Sunday's announcement whether the increase would trigger another round of tight money. This would depend on other actions

Reedy Road Plan Eyed By Kirk

TALLAHASSEE (AP) — Gov. Claude Kirk is going to study fully Rep. Bill Reedy's proposal to build what he calls four-lane "Poor Boy" highways in Florida's rural areas.

"I told him it looked favorable as he described them," gubernatorial aide Wade Hopping said, reviewing a telephone conversation with the U.S. Democrat.

It was Hopping who got details of Reedy's plan, his first of the weekend and agreed to

Bahamas 'Divorces'

NASSAU, Bahamas (AP) — The Bahamas virtually declared economic independence from Britain Sunday by announcing that the colony would not go along with devaluation of the pound sterling.

Premier Lynden O. Pindling said the Bahamas dollar would be divorced from the British pound and be threatened immediately with a result of devaluation.

He called public holidays for today and Tuesday to allow adjustments to the new monetary program.

"Our first duty is to the Bahamian people," Pindling said in a statement released after an emergency cabinet meeting.

"The government has decided that it will not, I repeat will not, devalue the Bahamian dollar."

Kindergarten PTL To Meet

The newly organized Parent-Teacher League of the Lutheran Church of the Redeemer Kindergarten will elect officers at a meeting at 7:30 p. m. Tuesday in the kindergarten classroom at the church.

The program will outline purposes of the PTL and Mrs. Jessie Andrews, teacher, will talk on the pre-kindergarten and school and health.

Members of the program committee are Mrs. Sherrie Wilson, Mrs. Bobbie Andrews, Mrs. Sandy Genson and Mrs. Allie Collins.

There is one phase in the gallop when a horse is entirely off the ground with the four legs flexed under the body.

Manned Lunar Craft Model On Launch Pad

CAPE KENNEDY (AP) — The surface of the moon, and the ascent engine, which is to lift them off. Leak problems with both engines have delayed the first test flight several months.

The first model craft has been moved to a launch pad, aiming for a mid-January launching date.

The space agency and Grumman Aircraft Engineering Co., the prime contractor, placed the first Lunar Module atop a Saturn I rocket on launch pad 37B Sunday.

The rocket is the same one that was on pad 34 Jan. 27 when three astronauts died as fire erupted in their Apollo 1 spacecraft.

The Saturn I is to place the module in an orbit more than 100 miles high for a flight scheduled to last 6.5 hours. During the test, the craft's two main engines each are to be ignited twice.

These are the descent engine, designed to drop the buglike craft and its two-man crew to earth.

Will Electric Irrigation Boost Your Money-Crop?

You bet it will!

A modern electrically-operated pump and siphon system will increase productivity and conserve water. You can regulate just the amount you need... when and where water is needed. Night operation can minimize evaporation loss.

Electric motors give dependable performance and peace of mind. Can be controlled by time-clock or thermostat to make irrigation automatic. And now the average price paid per kilowatt-hour is one-third less than it was just 10 years ago.

TRAFFIC TOLL
 MIAMI (AP) — Traffic accidents in Florida claimed a dozen lives during the week-end.

5th Anniversary Specials!
 MONDAY, TUESDAY, WEDNESDAY ONLY!
 ALL ELECTRIC SHAVERS SHOULD BE SHARPENED AT LEAST TWICE A YEAR.
ELECTRIC SHAVER SPECIAL 97¢
 SHARPEN CLEAN, OIL ADJUST SHAVING HEADS FOR CLOSER MORE COMFORTABLE SHAVES... Reg. 2.50
BARBER and Per Clippers SHARPENED, reg. \$3.50 \$1.97
 Clip and Present This Coupon—Expires Midnight Nov. 25

FREE MEN'S AND WOMEN'S ELECTRIC SHAVERS GIVEN AWAY DURING ANNIVERSARY.

FRIDAY, SATURDAY, MONDAY ONLY
 COMPLETE MOTOR PRESURE MAKE ELECTRIC SHAVERS
 • CLEAN OIL OIL SHARPEN
 • NEW COMMISSOR
 • NEW POINTS
 • NEW BRISTOR (except cordless shaver)
\$3.50 ALSO REGULAR (Shaving Heads & American Sabel)
 Clip and Present This Coupon, Expires Nov. 27

Electric Shaver Clinic
 211 N. BOULEVARD — BELAND — PHONE 724-7723
 OPEN MONDAY THRU SATURDAY, 9 A.M. TO 5 P.M.

SAVING
28¢
 18 to 24 lb size
 10 to 16 lb TURKEYS

SKINLESS FRANKS 38¢
SLICED BACON 43¢
FRYERS 29¢
CHUCK ROAST 48¢

CANNED HAM 5 lb can \$3.69
TURKEYS 48¢
ROASTERS 77¢

SEASON OF FULL CUT ROUND STEAKS 98¢
CHUCK ROAST 48¢
FRYERS 29¢
SLICED PINEAPPLE 4¢

COMPARE! TURKEYS
 18 to 24 lb size
 10 to 16 lb TURKEYS

COMPARE! TURKEYS
 18 to 24 lb size
 10 to 16 lb TURKEYS

COMPARE! TURKEYS
 18 to 24 lb size
 10 to 16 lb TURKEYS

COMPARE! TURKEYS
 18 to 24 lb size
 10 to 16 lb TURKEYS

COMPARE! TURKEYS
 18 to 24 lb size
 10 to 16 lb TURKEYS

COMPARE! TURKEYS
 18 to 24 lb size
 10 to 16 lb TURKEYS

COMPARE! TURKEYS
 18 to 24 lb size
 10 to 16 lb TURKEYS

COMPARE! TURKEYS
 18 to 24 lb size
 10 to 16 lb TURKEYS

COMPARE! TURKEYS
 18 to 24 lb size
 10 to 16 lb TURKEYS

COMPARE! TURKEYS
 18 to 24 lb size
 10 to 16 lb TURKEYS

COMPARE! TURKEYS
 18 to 24 lb size
 10 to 16 lb TURKEYS

COMPARE! TURKEYS
 18 to 24 lb size
 10 to 16 lb TURKEYS

COMPARE! TURKEYS
 18 to 24 lb size
 10 to 16 lb TURKEYS

COMPARE! TURKEYS
 18 to 24 lb size
 10 to 16 lb TURKEYS

COMPARE! TURKEYS
 18 to 24 lb size
 10 to 16 lb TURKEYS

COMPARE! TURKEYS
 18 to 24 lb size
 10 to 16 lb TURKEYS

COMPARE! TURKEYS
 18 to 24 lb size
 10 to 16 lb TURKEYS

COMPARE! TURKEYS
 18 to 24 lb size
 10 to 16 lb TURKEYS

COMPARE! TURKEYS
 18 to 24 lb size
 10 to 16 lb TURKEYS

COMPARE! TURKEYS
 18 to 24 lb size
 10 to 16 lb TURKEYS

COMPARE! TURKEYS
 18 to 24 lb size
 10 to 16 lb TURKEYS

COMPARE! TURKEYS
 18 to 24 lb size
 10 to 16 lb TURKEYS

COMPARE! TURKEYS
 18 to 24 lb size
 10 to 16 lb TURKEYS

COMPARE! TURKEYS
 18 to 24 lb size
 10 to 16 lb TURKEYS

COMPARE! TURKEYS
 18 to 24 lb size
 10 to 16 lb TURKEYS

COMPARE! TURKEYS
 18 to 24 lb size
 10 to 16 lb TURKEYS

COMPARE! TURKEYS
 18 to 24 lb size
 10 to 16 lb TURKEYS

COMPARE! TURKEYS
 18 to 24 lb size
 10 to 16 lb TURKEYS

COMPARE! TURKEYS
 18 to 24 lb size
 10 to 16 lb TURKEYS

COMPARE! TURKEYS
 18 to 24 lb size
 10 to 16 lb TURKEYS

COMPARE! TURKEYS
 18 to 24 lb size
 10 to 16 lb TURKEYS

COMPARE! TURKEYS
 18 to 24 lb size
 10 to 16 lb TURKEYS

COMPARE! TURKEYS
 18 to 24 lb size
 10 to 16 lb TURKEYS

COMPARE! TURKEYS
 18 to 24 lb size
 10 to 16 lb TURKEYS

COMPARE! TURKEYS
 18 to 24 lb size
 10 to 16 lb TURKEYS

COMPARE! TURKEYS
 18 to 24 lb size
 10 to 16 lb TURKEYS

COMPARE! TURKEYS
 18 to 24 lb size
 10 to 16 lb TURKEYS

COMPARE! TURKEYS
 18 to 24 lb size
 10 to 16 lb TURKEYS

COMPARE! TURKEYS
 18 to 24 lb size
 10 to 16 lb TURKEYS

COMPARE! TURKEYS
 18 to 24 lb size
 10 to 16 lb TURKEYS

COMPARE! TURKEYS
 18 to 24 lb size
 10 to 16 lb TURKEYS

COMPARE! TURKEYS
 18 to 24 lb size
 10 to 16 lb TURKEYS

COMPARE! TURKEYS
 18 to 24 lb size
 10 to 16 lb TURKEYS

COMPARE! TURKEYS
 18 to 24 lb size
 10 to 16 lb TURKEYS

COMPARE! TURKEYS
 18 to 24 lb size
 10 to 16 lb TURKEYS

COMPARE! TURKEYS
 18 to 24 lb size
 10 to 16 lb TURKEYS

COMPARE! TURKEYS
 18 to 24 lb size
 10 to 16 lb TURKEYS

COMPARE! TURKEYS
 18 to 24 lb size
 10 to 16 lb TURKEYS

COMPARE! TURKEYS
 18 to 24 lb size
 10 to 16 lb TURKEYS

COMPARE! TURKEYS
 18 to 24 lb size
 10 to 16 lb TURKEYS

COMPARE! TURKEYS
 18 to 24 lb size
 10 to 16 lb TURKEYS

COMPARE! TURKEYS
 18 to 24 lb size
 10 to 16 lb TURKEYS

COMPARE! TURKEYS
 18 to 24 lb size
 10 to 16 lb TURKEYS

COMPARE! TURKEYS
 18 to 24 lb size
 10 to 16 lb TURKEYS

COMPARE! TURKEYS
 18 to 24 lb size
 10 to 16 lb TURKEYS

COMPARE! TURKEYS
 18 to 24 lb size
 10 to 16 lb TURKEYS

COMPARE! TURKEYS
 18 to 24 lb size
 10 to 16 lb TURKEYS

COMPARE! TURKEYS
 18 to 24 lb size
 10 to 16 lb TURKEYS

COMPARE! TURKEYS
 18 to 24 lb size
 10 to 16 lb TURKEYS

COMPARE! TURKEYS
 18 to 24 lb size
 10 to 16 lb TURKEYS

COMPARE! TURKEYS
 18 to 24 lb size
 10 to 16 lb TURKEYS

COMPARE! TURKEYS
 18 to 24 lb size
 10 to 16 lb TURKEYS

COMPARE! TURKEYS
 18 to 24 lb size
 10 to 16 lb TURKEYS

COMPARE! TURKEYS
 18 to 24 lb size
 10 to 16 lb TURKEYS

COMPARE! TURKEYS
 18 to 24 lb size
 10 to 16 lb TURKEYS

COMPARE! TURKEYS
 18 to 24 lb size
 10 to 16 lb TURKEYS

COMPARE! TURKEYS
 18 to 24 lb size
 10 to 16 lb TURKEYS

COMPARE! TURKEYS
 18 to 24 lb size
 10 to 16 lb TURKEYS

COMPARE! TURKEYS
 18 to 24 lb size
 10 to 16 lb TURKEYS

COMPARE! TURKEYS
 18 to 24 lb size
 10 to 16 lb TURKEYS

COMPARE! TURKEYS
 18 to 24 lb size
 10 to 16 lb TURKEYS

COMPARE! TURKEYS
 18 to 24 lb size
 10 to 16 lb TURKEYS

COMPARE! TURKEYS
 18 to 24 lb size
 10 to 16 lb TURKEYS

COMPARE! TURKEYS
 18 to 24 lb size
 10 to 16 lb TURKEYS

COMPARE! TURKEYS
 18 to 24 lb size
 10 to 16 lb TURKEYS

COMPARE! TURKEYS
 18 to 24 lb size
 10 to 16 lb TURKEYS

COMPARE! TURKEYS
 18 to 24 lb size
 10 to 16 lb TURKEYS

COMPARE! TURKEYS
 18 to 24 lb size
 10 to 16 lb TURKEYS

COMPARE! TURKEYS
 18 to 24 lb size
 10 to 16 lb TURKEYS

COMPARE! TURKEYS
 18 to 24 lb size
 10 to 16 lb TURKEYS

COMPARE! TURKEYS
 18 to 24 lb size
 10 to 16 lb TURKEYS

COMPARE! TURKEYS
 18 to 24 lb size
 10 to 16 lb TURKEYS

COMPARE! TURKEYS
 18 to 24 lb size
 10 to 16 lb TURKEYS

COMPARE! TURKEYS
 18 to 24 lb size
 10 to 16 lb TURKEYS

COMPARE! TURKEYS
 18 to 24 lb size
 10 to 16 lb TURKEYS

COMPARE! TURKEYS
 18 to 24 lb size
 10 to 16 lb TURKEYS

COMPARE! TURKEYS
 18 to 24 lb size
 10 to 16 lb TURKEYS

COMPARE! TURKEYS
 18 to 24 lb size
 10 to 16 lb TURKEYS

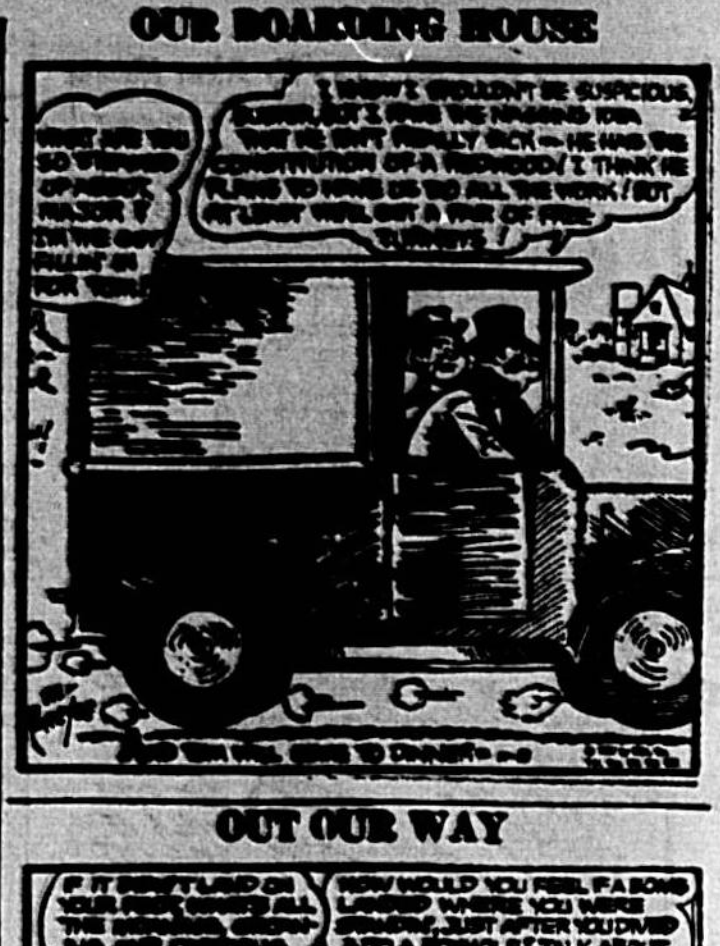
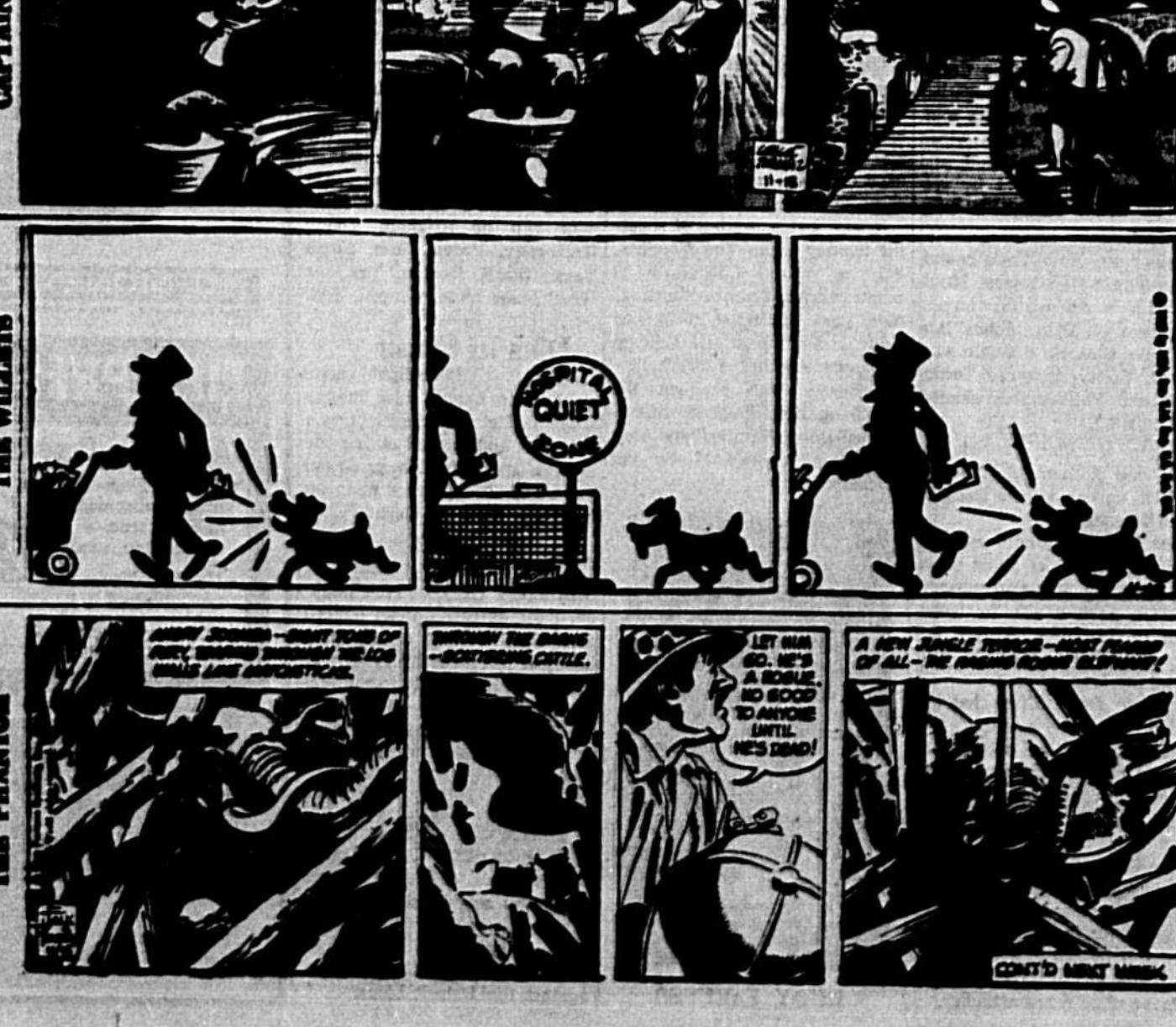
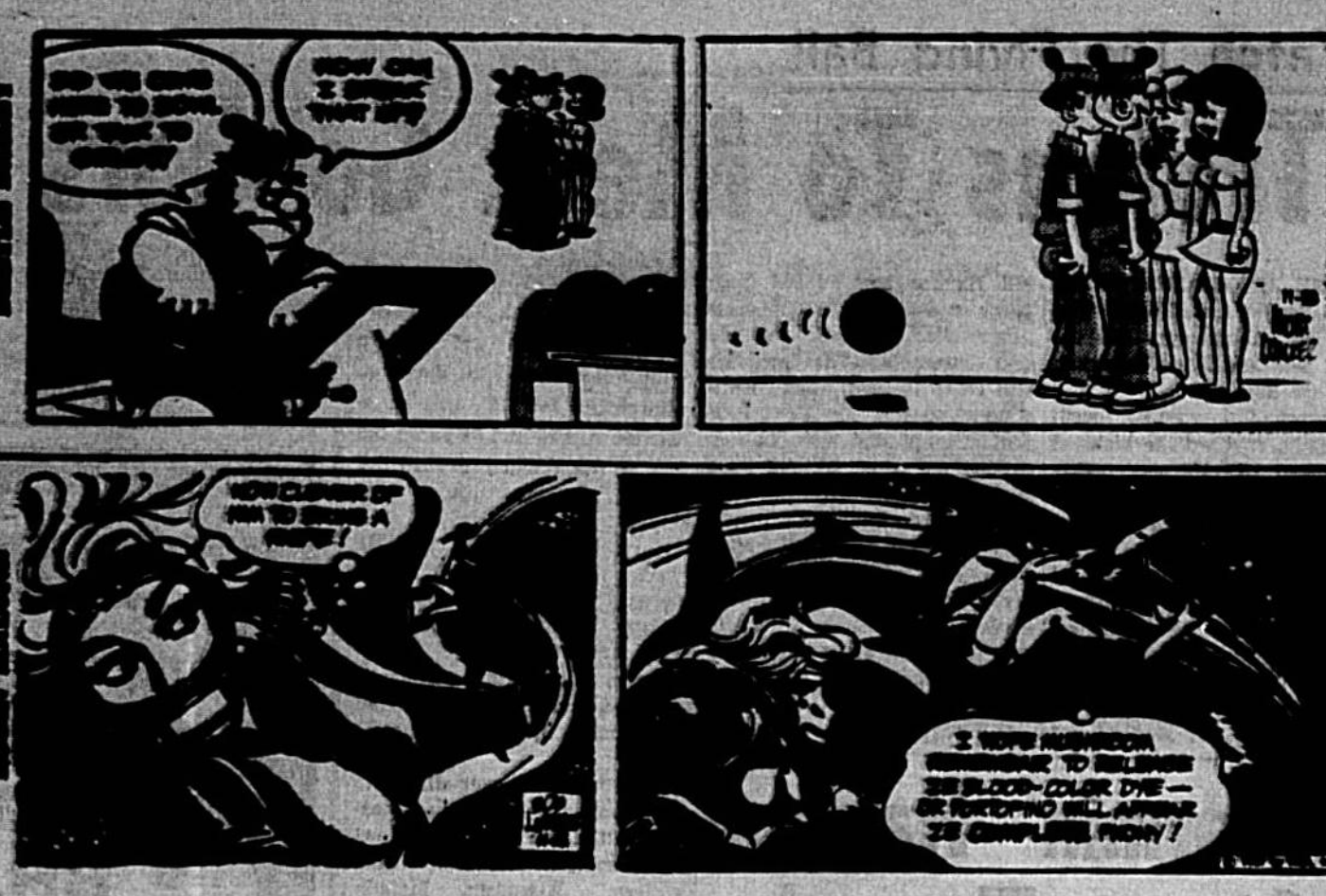
COMPARE! TURKEYS
 18 to 24 lb size
 10 to 16 lb TURKEYS

COMPARE! TURKEYS
 18 to 24 lb size
 10 to 16 lb TURKEYS

COMPARE! TURKEYS
 18 to 24 lb size
 10 to 16 lb TURKEYS



Great Schools section with a list of schools and a crossword puzzle grid.



Scrambler section with a list of words and a crossword puzzle grid.



SWIFT'S PREMIUM NEW TURKEYS

Butterball Turkeys

39¢ 45¢ 49¢

GOLD TURKEYS

29¢ 35¢ 39¢

A Deep Basted BUTTERBALL TURKEY

The Pilgrims Never Had It This Good

- Pumpkin Pies . . . 3 for 99¢
- Sweet Potatoes . . . 12 for 33¢
- Green Beans . . . 12 for 29¢
- Green Peas . . . 4 for 49¢

Maxwell House

99¢

Desert Topping 3¢
Cream Cheese 3¢
Margarine 1¢

- Ice Milk . . . 39¢
- Canned Pumpkin . . . 2 for 25¢
- Cranberry Sauce . . . 2 for 35¢
- Maryannaise . . . 49¢
- F & P Peaches . . . 3 for 89¢
- Colony . . . 10¢
- Apples . . . 3 for 49¢
- Potatoes . . . 10 for 79¢
- Grapes . . . 25¢

- Midgets or Gherkins 3 for 19¢
- Chocolate Morsels 4 for 25¢
- Chocolate Morsels 12 for 49¢
- Marshmallow Creme 7 for 19¢
- Dinner Napkins . . . 20 for 29¢
- Apple Rings . . . 3 for 99¢
- Kieffer Peas . . . 3 for 19¢

Cranberry Sauce

239¢

Enjoy the Happy Difference—While Shopping for Peaches

SANFORD PLAZA
Nov. 17-22 and Open Dr. Sanford

SEMINOLE PLAZA
Casselberry

MON. THUR. SAT. 9 A.M. - 9 P.M.

THURS. 9:30 - 9:00

CLUBS

- Canned Ham . . . 29¢
- Beefings . . . 49¢
- Flump Goose . . . 69¢
- Ham, or Turkey . . . 79¢
- Sliced Ham . . . 59¢
- Wieners . . . 39¢
- Oysters . . . 79¢

Unify Effort To Get NAS

A unified effort by the city of Sanford and the Seminole County Board of Public Instruction to secure the Naval Air Base for aviation and educational purposes was agreed upon today.

The city represented by the City Commissioners with Mayor Joe Baker doing the driving in those talks with federal officials in Washington, said that he had not received a feasibility report information which was expected on Nov. 15. This study is essential before any specific moves can be made.

On hand was Don Rathel, executive for the Sanford Industrial Commission, a city agency charged with the duty of securing industry for the base and other Sanford areas. Rathel said he had prospects for some of the buildings now used by the Navy.

Dr. John Darby, in charge of the University of Florida's Agricultural Experiment Station, told the group that chemists from the station had investigated the muck at the base and found some useful for the station's purposes. The station was, however, interested in acreage in the southwest section of the base for use in growing experiments—peaches and the like.

This unified attack is being joined as the vesting of the base by the Navy in 1968 has attracted national attention. Complications which are inherent in such governmental operations are increased as applications multiply.

W. E. Knowles, city manager, went over to City Manager Pete Knowles' office . . . and returned from a week's trek to Jamaica

Fete goes away for a week and they hear down the United Lumber Company

A CONVERSATION WITH CITY MANAGER W. E. KNOWLES.

REPORTER—The zoning board chairman sent a letter criticizing the City Commission over that gasoline station ordinance.

KNOWLES—They did?

REPORTER—Yeah, it seems Mr. McWhorter was upset over the commission turning down planner's proposal restricting new gasoline stations.

KNOWLES—He did?

REPORTER—(See, I had a funny feeling I wasn't getting anywhere.)

Sparrow—What did Mr. McWhorter say?

KNOWLES—Well, he lectured the board that if they allow another service station downtown it would kill any plans for rejuvenation

REPORTER—Perhaps they should stop selling drinks during the Mutual Concert shows

KNOWLES—Some midshipmen from the Naval Academy made such a racket with their canned drinks you couldn't hear the music.

Nobody asked me, but how come the sheriff's office is wasting its time going after all the "small fry" in these hotels and beverage raids? What about the "big guys"?

Wanted: A place to store a 1,200 square foot portable hospital. A conference (notice I didn't say meeting) was held Saturday morning and Dr. W. V. Roberts told the County Commission chairman the facility will have to be moved from the Coast Cola building.

Dr. Roberts is renovating the facility for the state welfare department.

Meanwhile, the hospital is building a storage facility that could house the unit.

Poor Constable Grady Hall! Since he switched to independent he can't seek re-election next year

The new high sheriff, Peter Millott, made it official yesterday. He admitted that he hired a Brevard investigator as his administrative aide.

"It isn't fixed yet," said the sheriff.

The power of politics—Last August Tom Largen switched from Democrat to Republican

—In September the doctor gave \$50 to Kirk's campaign and today—long, neck, whom—Dr. Largen got his appointment.

Fire Damages Rail Car Area Home Heavy Hit

Fire damaged a neighborhood rail car located with both parked at William Chapman's home in Orlando Monday afternoon when an explosion occurred at the same time, another fire at the home of Bill Howard, 809 Wynn's Road, near the railroad, resulted in an estimated \$2,500 damages to a bedroom and interior of the house.

Fire in the front car is thought to have started from a faulty mechanical fan in the car, Orlando Fire Chief T. L. King reports. The Orlando department was on standby from 11 p.m. until 11 p.m. for inspection to repair and examine the car.

Two months battle between the five judges and the governor has ensued following Robbin's appointment on Oct. 3. At that time the judges declared the appointment "null, void, and of no effect" since it did not comply with the law which declares the governor must appoint the person as court reporter recommended by the judges.



COUNTY FAIR was officially opened at 5 p.m. Monday when ribbon cutting ceremony was conducted by (left to right) County Agent Cecil Tucker, Legionnaire Joel Field, County Commissioner John Alexander, and Legion Commander Frank Luecker. The fair, located on American Legion grounds on Highway 17-92 south of Sanford city limits, will remain open through Saturday.

Largen Gets Official Word As Hospital Trustee

Formal appointment as a trustee of Seminole Memorial Hospital was needed today by Dr. Thomas L. Largen, Sanford surgeon, from Gov. Claude Kirk.

Dr. Largen, a Republican, will take his seat on the hospital board at its Dec. 12 meeting, succeeding A. B. Peterson Sr., a Democrat, who refused to switch party affiliation for reappointment.

Dr. Largen today issued the following statement: "It is with deep felt humility and responsibility that I accept the appointment as a member of the Board of Trustees of Seminole Memorial Hospital by Governor Kirk.

"We citizens of Seminole County have reason to be excited."

Continued on Page 2A, Col. 2

Four More Arrested In Raids

Four more persons were arrested in raids last night by eight warrants as the Sheriff's office continued to crack down on illegal beverage and bottle operations in the county.

All four were from the Orlando area.

Last Friday and Saturday some 14 warrants were issued on the same charges.

Again, Sheriff Peter Millott declined to disclose the names of those arrested.

Bonds for the four were set at from \$500 to \$2,500.

Millott did say that more arrests were expected this week. Altogether some 33 warrants for illegal beverage selling and bottle operations have been written. Thus far some 22 have been served.

Appeal Due By Robbin On Court Job

Norman Robbin of Lake Mary will file an appeal with either the 5th District Court of Appeals or the Florida Supreme Court to gain the office of court reporter of the 18th Judicial Circuit before Dec. 3.

The Herald learned today that Robbin will not end to his appointment of whether he will be court reporter for the 18th Judicial Circuit before Dec. 3.

A two month battle between the five judges and the governor has ensued following Robbin's appointment on Oct. 3. At that time the judges declared the appointment "null, void, and of no effect" since it did not comply with the law which declares the governor must appoint the person as court reporter recommended by the judges.

Board Favors Local Controls Okay For Auto Inspections

Seminole County will be going into the auto inspection business, a survey of the County Commissioners this afternoon by The Herald revealed.

It was agreed to provide emergency maintenance on Ponce de Leon Avenue, Woodland Avenue and five intersections in Maitland Springs.

No action was taken on the speed limit directive proposed by County Engineer William Delle stated his opinion that the county could do a better job of inspecting than most of the crooked in the business.

The Board in continued session later this afternoon is expected to approve the project to keep its control local. In the event the county had not taken over the inspection, they would be handled by the state.

It is expected the county will realize approximately \$65,000 the first year in profits through the inspections.

Hospital administrator Robert Roser is meeting with the County Commission this afternoon on plans for the storage building and making space for the portable hospital.

"Wild, uncontrolled franchising" of utility companies was hit by County Commissioner Lawrence Swafford at the meeting.

The remarks were made when the Commission on a matter of utility rights-of-way to the Seminole County Board.

Swafford said that in effect the county is "protecting developers and big shots with wild franchising without controls. It's time we did something to protect the people," he said while pointing out that he had nothing against this particular utility company.

It was agreed to place consideration of regulating utilities on the Dec. 5 agenda. The Board has discussed taking over regulating of utilities many times in the past and Florida Public Service Commission has determined it has no authority to regulate the utilities in Seminole County.

In other business, the Board authorized the chairman to telegraph the State Cabinet

San Sharpens His Ax—This Time In Casselberry

State Attorney Donnell Saff is sharpening his ax, this time in anticipation of cleaning up the Casselberry Police Department, report by Mayor Arthur Wheatley last night indicates.

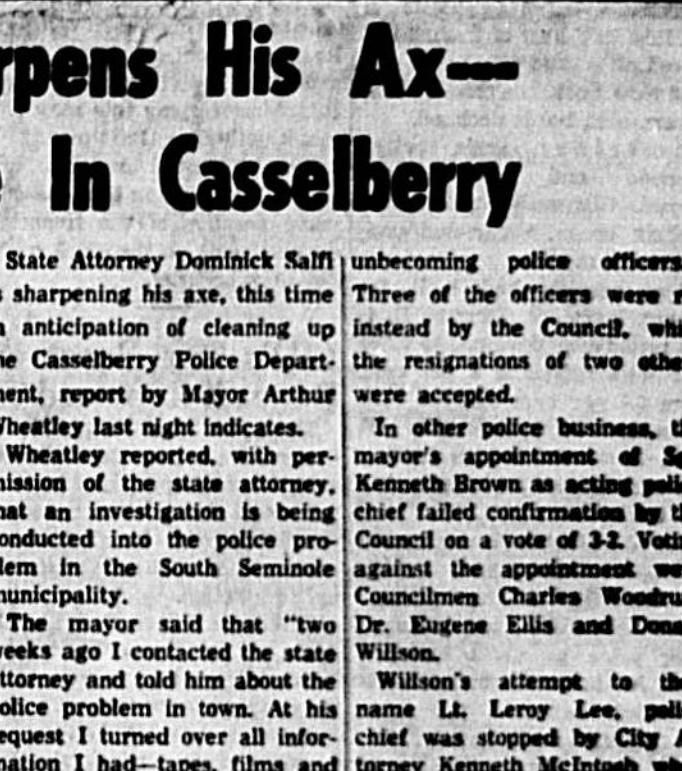
In other police business, the mayor's appointment of Sgt. Kenneth Brown as acting police chief failed confirmation by the Council on a vote of 3-2. Voting against the appointment were Councilmen Charles Woodruff, Dr. Eugene Ellis and Donald Wilton.

Wilton's attempt to name Lt. Leroy Lee, police chief was stopped by City Attorney Kenneth McIntosh when the attorney told the Board Wilton was trying "to usurp the executive authority of the mayor."

Wheatley's remark that he had heard Lee and Patrolman Rick Tolley are planning to resign was denied by Lee, who stated, "I didn't spend \$200 to resign."

Unsuccessful effort was made by Wheatley more than six weeks ago to purge the police department of four officers and the chief of police "for conduct."

Continued on Page 2A, Col. 2



DON WILLSON

Councilman Charged With Interest Conflict

Charges of "conflict of interest" were again hurled at Casselberry Councilman Donald Willson by Gerald Warren of the city's Planning Board at the meeting of the City Council Monday evening.

Following verbal opposition by Willson to a lengthy subdivision ordinance being considered, Warren said "the steered interest to refrain from voting on the matter."

"Willson works for a developer—Casselberry Land Company and wants to lobby the ordinance in the hopes of having another employee of Casselberry and Company on the Council to vote with him" after the election, Warren declared.

Willson, however, described the proposed ordinance as voluminous and old-fashioned and that "it tends to help subdividers out" and "places a discriminatory tax on builders."

The councilman denied any conflict of interest in the matter. "My employer has not even discussed the ordinance with me" he said while pointing out that he presently does not own any property suitable for subdividing.

The ordinance which places particular restrictions on development in unincorporated areas was recommended by the Planning Board and adopted by the Council on its second reading with Willson voting "no."

Continued on Page 2A, Col. 1

TIRE WEAR COSTS YOU MONEY

ALIGN AND BALANCE NOW AT . . .

JIM LASH

CHRYSLER-PLYMOUTH

2613 ORLANDO DR. (HWY. 17-92)

PH. 222-1885

Anstey Out Of Race

Casselberry has one less candidate for the office of mayor in the Dec. 5 municipal elections, with the withdrawal of Owen Anstey from the race today.

Anstey is announcing his withdrawal gave as the reason his job which requires traveling a great deal.

Candidates remaining in the race are Arthur G. Wheatley (Incumbent), Mrs. Marie Ellis, Roger Durrham and Curtis Blow.

Three Arrested In Break-In

Three Sanford juveniles were arrested last night charged with breaking into Croons Academy on two occasions according to Police Chief Ben Butler.

All three were 14 years of age. The trio broke into the cafeteria and teacher's lounge. Some \$1 was taken.



TOM LARGEN

Port Land Hearing On

Circuit Judge Tom Waddell this afternoon was hearing an application of the Seminole County Port Authority for approval of an "order of taking" to acquire use of needed land for the Port of Sanford prior to formal condemnation proceedings.

Port Attorney Gordon Frederick said earlier it was expected the court would approve the order, permitting the Authority to use the land for building purposes, pending acquisition of title through the condemnation suit.

Judge Waddell was expected to fix a date required of the Authority at 100 per cent of the appraisal of the needed land.