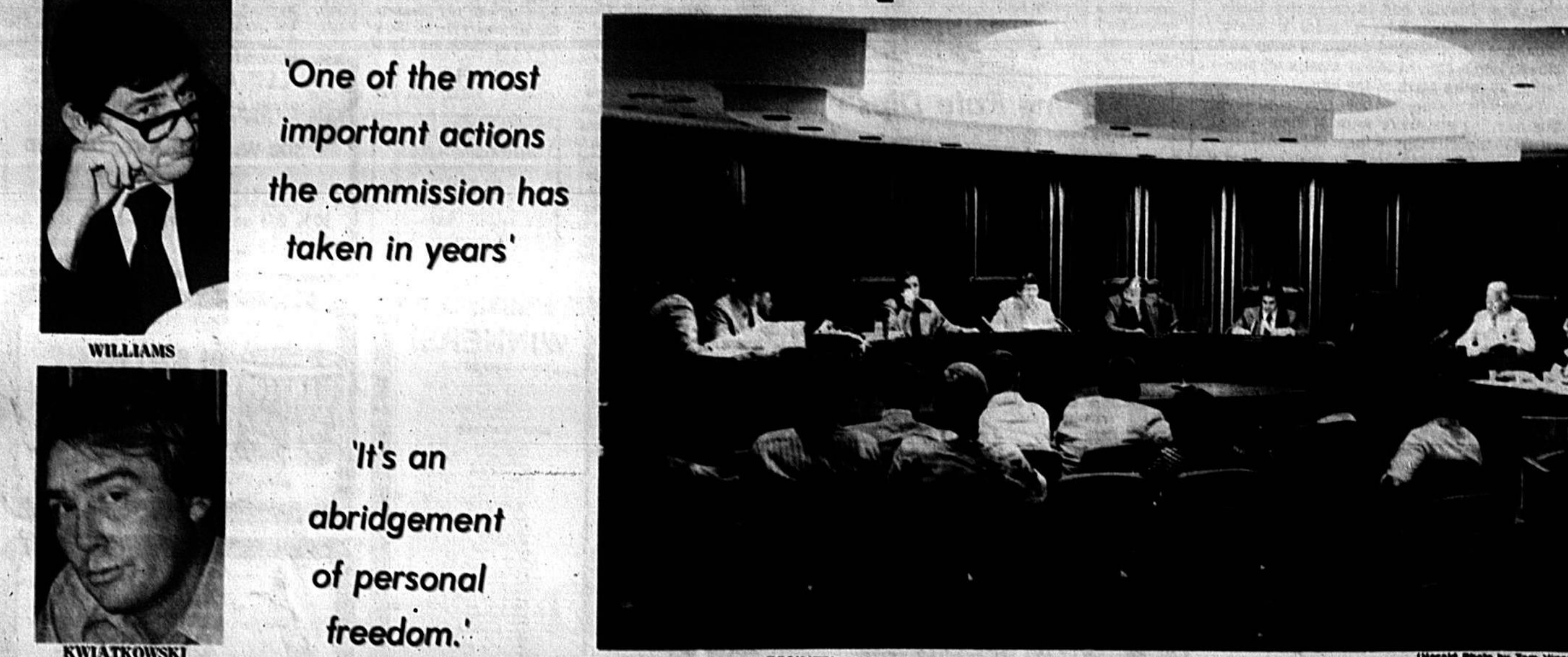


County Passes Comprehensive Plan



COUNTY COMMISSION CHAMBERS BEFORE FINAL PLAN VOTE WAS TAKEN (Herald Photo by Tom Vaccaro)

One of the most important actions the commission has taken in years'

It's an abridgement of personal freedom.'

Next: Detailed Look At Seminole's Future

Commission Chairman Dick Williams called it "one of the most important actions the commission has taken in years." County Commissioner Henry Kwiatkowski called it an "abridgement of personal freedom."

A third commissioner called it "the commission of a running battle between Realtors and homebuyers."

They were referring to Seminole County's comprehensive plan, which the county commissioners approved early this morning by a 4-1 vote. Though commissioners made several minor changes in the plan to meet objections raised by Commissioner Kwiatkowski, he voted against the plan.

Acceptance of the plan lays the groundwork for eventual county commission adoption of detailed plans governing drainage, transportation and delivery of services and facilities.

County officials will develop coordinated approaches to transportation and drainage made necessary by the county's explosive growth since 1960. They will work with officials of Seminole's seven cities to develop the plan.

Delivery of urban-level services in developed unincorporated areas will take place through creation of special taxing districts. Commissioners have called this a "user pays" philosophy. Such services include sewer and water service, urban fire protection, garbage collection and local drainage improvements.

Short-range development plans for the county's unincorporated areas are intended to let county residents know how their neighborhoods fit into long-range growth goals of the county. Certain areas are earmarked for intensive development; others are not intended for urbanization.

The plan's adoption also makes clear that Seminole is an urbanizing county that bears little resemblance to the sparsely populated Seminole County of 1880 when there were less than 50,000 county residents. Now there are 140,000, and the recent increase in building permit applications means the growth will continue.

Along with the growth has come a demand from county residents that county government insure Seminole County will be a desirable place to live in 10, 15 or 20 years.

AN EXTENSIVE EFFORT TO SOLICIT PUBLIC COMMENTS

BILL KERCHER

"The plan is one of the three most important actions by the Board of County Commissioners since I've served on the commission (beginning in 1974)," said Commissioner Williams.

Voting in favor of the plan were Commissioners Williams, Bob French, Bill Kirchhoff and John Kimbrough.

"I voted against the plan for the same reasons I voted against the development framework (policy portion of the plan) June 21. It's an abridgement of personal freedom," said Kwiatkowski.

At the June commission meeting, he gave three reasons for opposing the plan: "It infringes upon personal and private rights. It violates the basic rules of management. It is based on setting up special taxing districts, a concept which is untried. It may be a real horror story in the making."

The comprehensive plan consists of three elements: —A "development framework," which spells out the basic

policies of the county in regard to natural resources and conservation; economic, housing and general land use; and services and facilities, embodying a "user pays" philosophy for urban-level services provided to unincorporated county areas through establishing special taxing districts.

—A short-range development plan, which includes land-use plans for the county's unincorporated areas and a five-year capital improvements program.

—An intergovernmental coordination statement.

For the first time, homebuyers will have some assurance about the future development (or non-development) of their neighborhoods and surrounding areas, said Kimbrough, whose vote for the plan was one of his last acts as county commissioner. (He will leave the commission at the end of the week to move to Virginia.)

"This was really a running battle between Realtors and homeowners," said Kimbrough. "The homeowners wanted assurances about the future character of their neighborhoods."

Though adoption of the plan did not rezone any land, the land-use maps will be legally binding on the planning and zoning commission and county commission when they take up requests for rezoning.

The county's planning staff will initiate requests for rezoning in a "small number of cases" where the plan indicates a lower intensity use than current zoning, said Bill Kercher, county planner.

Five county residents Tuesday night requested the future land use designation of their property be changed before adoption of the plan.

The county commission voted down each request.

The commission also voted to handle all rezoning requests now under consideration or which were submitted by Tuesday night under procedures in effect before adoption of the plan.

"We've made an extensive effort to solicit public comments," Kercher said.



JIMMY CARTER LESTER MADDOX

'A Call From Jimmy Who?'

MARIETTA, Ga. (UPI) — President Carter phoned former Gov. Lester G. Maddox to wish his old political foe a speedy recovery from a heart attack early this week. But he couldn't get through.

A White House spokesman said both Carter and his wife, Rosalynn, did speak with Maddox's wife, Virginia, at Urban Medical Center where Maddox is in "guarded" condition.

But Maddox, in the hospital's intensive care unit, was not allowed phone calls or visits from persons outside his immediate family.

Including from the President of the United States.

PREPARING THE PARK

With equipment supplied by the city of Sanford, workers prepare Centennial Park, between 4th and 5th Streets and Park and Oak Avenues, for planned dedication ceremonies 10 a.m. Oct. 6. The park is the project of the Civic and Community Affairs committee of the Greater Sanford Chamber of Commerce and the CIP (Community Improvement Project). An azalea sale and May Day breakfast were held as fundraisers along the way. A gazebo is in the works, with designs donated by architect Carl Gutmann. Cement and labor have been pledged — but civic clubs and residents are being urged to rally behind the project. Goal: to complete the park by the end of the Centennial year.



LAYING PIPE FOR SPRINKLER SYSTEM IN CENTENNIAL PARK

Five Indicted In Land Fraud

WASHINGTON (UPI) — A federal grand jury today indicted five men, including a national real estate figure and a partner in a prestigious Pittsburgh law firm, on charges they bilked \$6.2 million from more than 600 investors in a Florida land deal.

David Addis, head of the Justice Department's land fraud unit, said the indicted officers and former officers of LTF Inc., sold mortgages on Florida land parcels located "on top of a sewage treatment plant, on a golf course and in a lake."

"Virtually all the investors had no access to their property," he said.

Most of the investors were elderly or disabled persons, many of whom "lost their life savings," Addis said.

Among those indicted on charges of mail fraud and conspiracy are wealthy Florida land developer Frank Carcino, the first chairman of the Washington-based American Land Development Association, and Stephen Stronach, a partner in Pittsburgh's largest law firm, Reed, Smith, Shaw and McKay.

Addis described the alleged scheme as "the biggest Florida land fraud in years."

He said most of the investors received worthless land in the 600-acre rural Orlando, Fla., development known as "The Swallows," and about \$1 million of their money was illegally diverted to another venture owned by the five men in Fortburg, Pa.

Today

Around The Clock	6-A	Horoscope	5-8
Calendar	7-8	Horoscope	5-8
Comics	8-9	OURSELVES	5-8
Crossword	8-9	Sports	6-8
Editorial	6-A	Television	6-8
Dear Abby	1-B	Weather	2-A

ABC HAS THE LOWER EVERYDAY PRICES AMERICA'S LARGEST WINE & SPIRITS DEALER

LIQUOR SALE

ALL WEEK & DAILY SPECIALS UP TO 40% OFF AS MUCH AS \$2 PER BOTTLE. SAVE GAS! THERE'S AN ABC NEAR YOU. 5 DAY SALE TUES., SEPT. 27 THRU SAT., OCT. 1

ABC COCKTAIL LOUNGES

ALL DRINKS 48¢

ANY ONE CALL DRINKS

SANFORD HIGHWAY 17-92 SOUTH CITY LIMITS

LONGWOOD COCKTAIL LOUNGE PACKAGE STORE HIGHWAY 17-92 NEAR 434

NEW ABC "DISCO" LOUNGE HIGHWAY 17-92 AT 434 CASSELL BLVD. LIVE ENTERTAINMENT REVOLVING BAR WITH COLOR CHANGING FOUNTAIN OPEN SUNDAY

ABC "DISCO" LOUNGE HI-WAY 436-ONE BLOCK E. OF I-4 LIVE ENTERTAINMENT - OPEN SUNDAY -

DON'T BE FOOLED! SOME STORES PRICE THEIR WINES & SPIRITS 12 TO 15 PER BOTTLE ABOVE THEIR REAL PRICE AND TELL YOU THEY WILL SAVE 42 PER BOTTLE OR 40% AT A CASH OFF. ABC POLICY IS TO MAKE ALL BOTTLES AT THE LOWEST PRICE. ABC NEVER MISLEADS YOU!

MOULIN ROUGE PINK OR WHITE CHAMPAGNE-COLD DUCK 2.49 5TH 27.95 5TH

WISER'S 10 YR. DELUXE "It's 4 Yrs. Better" CANADIAN BOND 75.95 CASE 6.39 5TH

STANLEY SCOTCH IMPERIAL BLEND 8 YR. KY. BRB. 4.97 QT.

WILD TURKEY 101 8 YR. KY. BRB. 8.39 5TH

QUAIL CREEK 90 KY BRB 5.79 5TH

WHITE HORSE SCOTCH 65.88 CASE 5.79 5TH

TAAKA GIN HIRAM WALKER'S VODKA 52.95 CASE 4.47 QT.

STANLEY KY. BLENDED WHISKEY 57.95 CASE 4.88 QT.

M & M BOURBON 57.95 CASE 4.88 QT.

ROYAL VELVET CANADIAN MARTIN'S V.V.O. 71.58 CASE 5.99 QT.

ASTI-SPUMANTE ITALY 36.00 CASE 3.39 5TH

LAUREL'S SCOTCH IMPORTED SCOTLAND 63.95 CASE 5.47 QT.

3-RIVERS BLEND DON Q RUM 57.95 CASE 4.88 QT.

CERTIFIED GIN LAUDER'S SCOTCH 63.95 CASE 5.47 QT.

12 YR. OLD SCOTCH LORD BARRY J & B SCOTCH NON AGE 42.45 CASE 6.97 5TH

ABC 6 YR. OLD 86° KY. BRB. CANADIAN LORD CALVERT 45.75 CASE 5.49 QT.

PEMARTIN CREAM SHERRY 3.99 5TH

3-RIVERS BLEND DON Q RUM 57.95 CASE 4.88 QT.

CERTIFIED GIN LAUDER'S SCOTCH 63.95 CASE 5.47 QT.

LA BRUSCO LA BELLA IMP. ITALY 21.85 CASE 1.88 24 OZ.

STANLEY VODKA HARWOOD CANADIAN 55.95 CASE 4.69 QT.

OLD GRAND-DAD 86° KY. BRB. WISER'S 10 YR. DELUXE "It's 4 Yrs. Better" Canadian Bond 74.99 QT.

PLANTERS PEANUT BRITTLE .79 12 OZ. TIN

ABC 100° VODKA "WHY BUY WATER?" 5.39 QT.

TEN HIGH BOURBON 4.49 QT.

SCHEINLEY BLENDED RES. 4.79 QT.

CANADA HOUSE CANADIAN 4.29 QT.

GORDON'S VODKA 4.39 QT.

SEAGRAM'S GIN 4.79 QT.

BLUE DIAMOND 88c 6 OZ. TIN

MARTINI & ROSSI DRY OR SWEET VERMOUTH 2.49 5TH

DRY SACK SHERRY SPAIN 3.59 5TH

MADRIA, MADRIA SANGRIA 1.59 5TH

GALLO VIN ROSE 2.69 1/2 GAL.

ALMADEN CHARLIS 3.19 1/2 GAL.

FISH SHAPED BOTTLE 99¢

PEPSI-COLA 6 PK. 1.09 12 OZ. CANS

TORO DORO SANGRIA 1.99 24 OZ. 5

LIQUEUR

PETER HEERING CHERRY 5TH 8.99
COGNAC 3/4 QT. 8.39
VSOP COGNAC 3/4 QT. 8.39
SAMBUCA BARDONE 5TH 7.99
AMARETTO 3/4 QT. 5.39
NEAPOLITAN 5TH 7.39
CAMPARI APERITIF 5TH 5.39
LORD-A-MOON 5TH 5.39
AMARETTO MENTHE CACAO BANANA ANISETTE BLACKBERRY PEPP SCHNAPPS SLOE GIN TRIPLE SEC DOMAINE 3/4 QT. 3.99

CANADIAN FALLS CANADIAN V.S.O.P. BRANDY 67.95 CASE 5.79 QT.

CHAMPAGNE COLD DUCK GOLD SEAL 4.59 5TH

FLA. SOUVENIR GIFT BOX ASST. SEAGRAM V.O. JIM BEAN KY. BRB. BLACK & WHITE SCOTCH. VODKA-GIN-RUM 2.99 1/2 GAL.

CHAMPAGNE 6.49 5TH

ASTI-SPUMANTE 4.99 5TH

BRUT CHAMP 10.99 5TH

HI-BALL GLASSES 25 FOR 88¢

ROYAL DELUXE VODKA GIN RUM 4.29 QT.

QUAIL CREEK 90° 7 YR. KY. BRB. QUEEN ANNE SCOTCH 6.88 QT.

JACQUIN'S RUM LIGHT OR DARK OLD 7 YR. KY. BRB. REPEATER 5.39 QT.

ROYAL DELUXE VODKA GIN RUM 4.29 QT.

QUAIL CREEK 90° 7 YR. KY. BRB. QUEEN ANNE SCOTCH 6.88 QT.

HOLLAND HOUSE SWEET & SOUR MIX 1.19 QT.

ICE CUBES CRYSTAL CLEAR OVER 8 LB. BAG 69¢

ST. JOHANNIS GERMAN 25 OZ. 2.99

75 LIEBFRAUMILCH 2.99
75 MAY WINE 2.99
75 BENCKSTELER KURFURSTLICH 3.17
75 MERSTERER DOMSTAL 3.17
75 PIESPORTER MICHELSBERG 3.69
75 ZELLER SCHWARZE KATZ 3.17
75 SPATLESE ZELLER SCHWARZE KATZ 4.99
75 SPATLESE PIESPORTER TREPP 6.99

Bacchus FRENCH & GERMAN 24 OZ.

75 LIEBFRAUMILCH 2.89
75 GRAVES 3.19
75 BEAULOUAIS 3.69
75 ST. EMILION 3.99
75 SAUTERNES 4.69
75 MARSEILLAN 3.19
75 PIESPORTER MICHELSBERG 3.49
75 PIESPORTER MICHELSBERG 3.49
75 ZELLER SCHWARZE KATZ 3.69

THE GREAT '76 VINTAGE GERMAN WINES "READY NOW!" LONG LIFE - LAY SOME AWAY, WILL INCREASE EACH YEAR.

MADONNA LIEBFRAUMILCH 4.19 PIESPORTER TREPPCHER SPATLESE 4.99
"BACCUS" SPATLESE PIESP. MICH. 5.19 JOHANNISBERG, ERNT. SPATLESE 5.99
BACCUS SPATLESE KNOV. NACX. 5.19 AUSLESE LESENER SCHLOSS 6.99
ATYLER KUPP KABINET 4.69 AUSLESE OCKFENER BUCKSTEIN 7.19
OCKFENER BUCKSTEIN KABINET 5.19 AUSLESE WEHLERER SONNWIH 7.99
NAHETHALER STEIN MBR. KAB. 4.49 AUSLESE JOHANNISBERG VOGELANG 8.99
SPATLESE NAHETHALER STEIN MBR. 5.99 AUSLESE MADONNA 7.99
MADONNA SPATLESE 5.19 BEERMANSELE MADONNA 14.95

SAVE UP TO 16% IN CASE LOTS

1.99 IMPORTED WINE SALE 58,654 BOTS.

BEAULOUAIS-COTES DU RHONE-BORDEAUX LIEBFRAUMILCH-CLARET-BURGUNDY WICKER CHIANTI-MERLOT-SANGRIA JAPANESE PLUM 18 OZ. LAMBRUSCO

DE LUZE • TORRES • LUZZANO • JUAN ESTEBAN • ST. JOHANNIS • JAB.VERCHERRE • BACCHUS VALUES TO 3.99

1.99 5TH 12 22.95

CARL REH WINE '76 VIN GERMAN 2

SCHLOSS OCKFENER SPATLESE 5.49 ZELLER SCHWARZE KATZ 3.99
TUTTENHOF ALER SPATLESE 5.79 BENCKSTELER KURFURSTLICH SPATLESE 5.49
PIESPORTER OCKFENER AUSLESE 7.99 KUSSERATHER ST. MICHA. SPATLESE 5.49
WEHLERER SONNWIH AUSLESE 7.99 WUTINGER SCHWARZENB SPATLESE 5.49

MAGNUMS

LA-BELLA LAMBRUSCO 3.99 1/2 GAL.

OLD SHAL CATRINA 3.99 1/2 GAL.

GALLO PINK CHARLIS RED ROSE 2.99 1/2 GAL.

ALMADEN BURGUNDY CHARLIS 3.99 1/2 GAL.

TAYLOR PORT, SHERBY CREAM SHERRY PALE DRY 4.29 1/2 GAL.

POMBARO ROSE MAP. PORTUGAL 4.99 1/2 GAL.

BUY BEER BY THE CASE & SAVE 24 - 12 OZ. CANS

RED, WHITE & BLUE 5.15
SGA LIGHT 5.49
ABC BEER ON ALE 5.49
PEARL BEER 5.99

RED, WHITE & BLUE BEER 6.12 12 OZ. CANS

IMPORTED GERMAN BEER FURSTENBURG 6.12 12 OZ. CANS

SCHLITZ 3.19 12 OZ. CANS

SAVING WINE BY THE GALLON ALL WINE BOTTLED IN CALIF. AT WINEST SEBASTIANI

GRENADE ROSE BURGUNDY CHARLIS 6.99 24.95 CASE

PINK CHARLIS ROSE BURGUNDY CHANTI SAUTERNES - CLARET 18.95 CASE

QUASTI

WU ROSE - SAUTERNES BURGUNDY - CHANTI 5.29 24.95 CASE

SANGRIA - CLARET - WINE 24.95 CASE

PORT-SHERRY 5.99 12 OZ. CANS

W. PORT-SHERRY CREAM OR DRY SHERRY 22.95 CASE

PORT-SHERRY WHITE PORT 6.29 24.95 CASE

BUY WINE BY THE 1/2 GAL & SAVE

SAN MARTIN BURGUNDY ROSE-CHARLIS 3.99 1/2 GAL.

SEBASTIANI ROSE CHARLIS BURGUNDY 3.99 1/2 GAL.

GALLO PORT-SHERRY CREAM SHERRY DRY SHERRY 3.99 1/2 GAL.

ABC CHARLIS-ROSE BURGUNDY CHANTI 2.99 1/2 GAL.

YONK DOND SANGRIA 3.99 1/2 GAL.

ABC PORT-SHERRY 3.99 1/2 GAL.

ABC PORT-SHERRY 3.99 1/2 GAL.

WORLD IN BRIEF

Japan Airlines DC-8 Crashes; 25 Bodies Recovered So Far

KUALA LUMPUR, Malaysia (UPI) — A Japan Air Line DC-8 on a flight from Tokyo to Singapore Tuesday had twice circled Kuala Lumpur's Subang Airport under a heavy rainstorm when it crashed across 50 trees and plowed into a 300-foot hill at a palm oil plantation, 20 miles north of the city. Twenty-five bodies had been recovered as of this morning and there were 41 known survivors — though many of them were seriously injured and burned — but 10 were missing, Police Chief Haniff Omar said. The search for the missing was resumed at dawn today.

Terrorist Hijacks Airliner

DACCA, Bangladesh (AP) — At least one Japanese terrorist hijacked a Japan Air Lines DC8 jetliner with 158 persons over India today, and the plane landed in Dhacca despite the Bangladesh government's refusal of landing permission. Another JAL DC8 crashed the night before in Malaysia during a thunderstorm and 36 persons, including two Americans, were reported dead or missing. Three injured Americans were reported among 43 survivors.

Israel Expels 9 Over Sect

ROME (UPI) — Nine black American women and children, expelled by Israel to prevent them from joining a self-styled "Black Hebrew" sect in the Negev Desert, left Rome for the United States today aboard an Italian airliner. Italian authorities put the nine on an Alitalia airliner after they spent the night in Rome's Leonardo Da Vinci Airport.

Charges To Be Dropped Against SWAT Vandals?

The Seminole-Stevens state attorney's office will decide within two weeks on dropping charges against 29 "SWAT" students from Spruce Creek High School as recommended by the state Division of Youth Services.

Margaret Anderson, district supervisor for the department of Health and Rehabilitative Services, said the decision to recommend dropping charges in exchange for restitution came Tuesday.

"Normally with children who have no prior arrest record, whose attitude is good and who agree to make restitution we recommend dropping the charges," she said.

Damages during the protest ranged from \$100 to \$1,000. The incident occurred Sept. 18 and the 17-year-old students were charged with vandalism and trespassing.

Assistant State Attorney Randy Kramer, who handles prosecution in juvenile court, said his office is yet to receive the written recommendation from the state agency.

WEATHER

8 a.m. readings: temperature, 75; overnight low, 69; yesterday's high, 90; barometric pressure, 30.02; relative humidity, 94 per cent; wind, calm. Partly cloudy today and Thursday. Chance of mostly afternoon and early evening showers. High mostly upper 80s in ground. Wind mostly lower 10s. Winds variable 10 mph or less but stronger and gusty near thunderstorms. Rain probability 60 percent Wednesday, 50 percent Wednesday night and 30 percent Thursday.

save on energy with INSULATION. Home Available From ADCOCK INSULATION. Blows-in Insulation. Free Estimates. Insulate Now & Save!!! 600 French Ave. 322-9551

Evening Herald. Wednesday, September 26, 1977 - Vol. 76, No. 23. Published Daily and Sunday, except Saturdays and Christmas Day by The Sanford Herald, Inc., 200 N. French Ave., Sanford, Fla. 32771.

Holdup Man: 'Shoot Him!' Grocery Clerk Is Robbed At Gunpoint

Sanford police today were looking for two men who held up a grocery store clerk Tuesday night and escaped with \$125 and Seminole sheriff's deputies were investigating burglaries in which property valued at \$3,438 was taken. Police said two men, one wearing a cowboy-style hat and armed with a .22-caliber pistol, entered the D & G Grocery, at Celery and Locust avenues, about 10:30 p.m. while clerk Harold Meyers was outside. When Meyers went back into the store the gunman was behind the counter and announced, "This is a holdup. Open your cash register," police said.

Action Reports

Fires
Courts
Police Beat
Sanford police today today reported burglaries in which property valued at \$3,438 was taken. Police said two men, one wearing a cowboy-style hat and armed with a .22-caliber pistol, entered the D & G Grocery, at Celery and Locust avenues, about 10:30 p.m. while clerk Harold Meyers was outside. When Meyers went back into the store the gunman was behind the counter and announced, "This is a holdup. Open your cash register," police said.

Crime Rate Dips
WASHINGTON (UPI) — Serious crime, for the first time in four years, failed to increase substantially last year, the FBI says. The FBI said Tuesday 11.3 million serious crimes were reported in the FBI in 1976, a 6.4 per cent increase over 1975. Adjusted figures showed the gain was no more than the population increase, it said. The number of serious crimes per 100,000 population decreased by .3 per cent, the FBI said.

HOME BURGLARIZED
Deputies said burglars entered the residence of Ester Gebauer on Horseshoe Drive, Forest City, by a window and made off with two passports, \$350 in travelers checks, \$500 in camera equipment and a jar of silver coins. Sheriff's deputies have arrested Ralph Michael Coleman, 26, of 132 Pineda St., Longwood, on a Broward County warrant charging burglary and grand larceny. — BOBLOYD

LEDIARD'S UNIFORMS
GRAND OPENING THRU OCT. 1st NOON at our NEW PERMANENT ADDRESS
103 W. OHIO AVE., DeLand
(near Chamber of Commerce)
Come in to register for 2 FREE uniforms to be given away. Drawing Nov. 1st.
10% OFF any uniform in stock thru Sept. 30 of this year.

ECKERD DRUGS
NO PURCHASE NECESSARY!
IN ALL FLORIDA ECKERD DRUG STORES!
\$500,000 Sweepstakes
It's as easy as 1, 2, 3!
1. Buy one and only one Eckerd Drug Store product containing the Eckerd Drug Store logo.
2. Cut out the coupon and place it in the envelope provided.
3. Mail the envelope to: Eckerd Drug Store Sweepstakes, P.O. Box 1000, Sanford, FL 32771.

PLANTERS MIXED NUTS 1.39
IVORY LIQUID DETERGENT 99¢
WINNERS!
\$1,000,000 WINNERS
\$100,000 WINNERS
\$10,000 WINNERS

CLOSE-UP TOOTH PASTE 79¢
V05 HAIR SPRAY 69¢
GILLETTE RIGHT GUARD 97¢

HOMELCO DIAL-A-BREW COFFEEMAKER 32.88
SHARP PRINTER CALCULATOR 69.99
GRAN PRIX AM/FM STEREO SYSTEM 169.88

22" SELF PROPELLED POWER MOWER 109.88
2-HP POWER EDGER 99.88
OUTDOOR LAWN FURNITURE 6.88 11.88

AMACIN TABLETS 1.33
VASELINE INTENSIVE CARE LOTION 99¢
ESSENCED BUBBLING MILK BATH 69¢
SUAVE SHAMPOO 69¢

14" x 14" BRASS 8-8-0 GRILL 7.88
16-qt. FRAM ICE CHEST 93.88
NO POST STUMP REMOVAL 1.77

KEYSTONE CAMERA 29.99
TRIPLE PRINTS TODAY AND EVERYDAY
TRIPLE PRINTS TODAY AND EVERYDAY

16-qt. FRAM ICE CHEST 93.88
NO POST STUMP REMOVAL 1.77
DOUBLE END PRUNING RAZOR BLADES 1.29

TRIPLE PRINTS TODAY AND EVERYDAY
TRIPLE PRINTS TODAY AND EVERYDAY
ECKERD DRUGS

FLORIDA IN BRIEF

Askew Asks Support For War Refugees

TALLAHASSEE (AP) — Gov. Reubin Askew has urged Florida's congressional delegation to support an extension of federal aid to Indochina war refugees, who face a fund cut-off Friday. Some 1,300 refugees who settled in Florida face an immediate cutoff Friday in funds for the Indochina Refugee Assistance Program, which was set up in 1975 to expire Sept. 30 of this year. "I don't know of anything legally that we can do" to continue financial aid to the refugees if the funding stops, said aide Bonnie Armstrong, speaking for the governor who is on a European trip. She said many of the refugees settled near the military and air bases along North Florida's Gulf Coast. The program was set up to help the refugees assimilate into American society.

Disaster Relief Extended

TALLAHASSEE, (AP) — Florida farmers in the 35-county drought disaster area have been given an extension until Dec. 2 to apply for low-interest federal loans, says Sen. Lawton Chiles, D-Fla. Chiles said Tuesday the Farmers Home Administration approved his request to extend the deadline which had been set for Friday. He said farmers in the stricken area needed more time to complete applications for emergency relief.

Coverup Charges Investigated

TALLAHASSEE, (AP) — The appointment of State Attorney Quillian S. Yancy of Bartow to handle accusations of a coverup in the office of State Atty. Robert E. Stone of Fort Pierce has been announced. In a release Tuesday, Gov. Reubin Askew said he made the appointment at the request of Stone, who disqualified himself from the case to avoid any possible conflict of interest. The charge was lodged by Steven T. Myers. He accused Stone's office of failing to prosecute A.J. Brackins, a member of the Vero Beach Shipyard Board.

SPECIAL SALE

Have Your Own Woodburning Heatilator Fireplace
BUY NOW AND SAVE 10% ON ALL MODELS
heatilator AMERICA'S LEADING FIREPLACE SYSTEMS are easy to install
In just a few simple steps you can enjoy the warmth of a new Heatilator Fireplace. It makes a great project for the do-it-yourselfer and costs less to install than traditional fireplaces. We can show you the full line of fireplaces and how easy it is to install them when you visit our showroom. With this modern break through in fireplace design there is no reason why everyone shouldn't have a fireplace in their home.

heatilator AMERICA'S LEADING FIREPLACE SYSTEMS are easy to install
OPEN 'TIL 4 P.M. SATURDAY
GREGORY LUMBER
320 S. Maple Ave. Sanford

To Prevent '78-79 Tax Hike Sanford: Attrition Policy For Employees

By BOB LOYD Herald Staff Writer
Sanford city commissioners have adopted an ordinance raising property taxes 7.7 per cent to help fund the city's \$2.8 million general government budget for the 1977-78 fiscal year beginning Oct. 1. "Meanwhile, officials have already set in motion plans to try to prevent another tax increase for the following year by cutting down on the number of city employees, now 288." "We must start planning now," Mayor Lee Moore said Tuesday, "or we'll face the same thing (tax increase) next year." Moore said he hasn't proposed the firing of any city employees but he favors cutting the city payroll by attrition. "What I'm saying is when someone quits, the department head should look to possibly shifting responsibilities among city employees. We must function with fewer employees." This year's tax increase — from \$6.49 to \$6.99 per \$1,000 of assessed value — provides \$127,000 in additional city revenue and includes a 6.4 per cent across-the-board pay raise for city employees. City Manager Warren E. Knowles notified city department heads, in a memo dated Sept. 13, to start making plans "to cut some personnel" during preparation of the 1978-79 budget. Budget preparation will begin in six months. "What we're shooting at is trying to keep down further tax increases," Moore said. He noted that unexpected increases in costs of city government are making holding the line on taxes difficult. Monday night when commissioners adopted this year's tax increase ordinance they were also notified by Knowles that insurance on the fleet of city-owned vehicles has a \$13,471 increase in premium. "That amounts to a tenth of a mill in taxes," Moore said. In addition to the general government budget for the upcoming fiscal year, commissioners also adopted a utility department budget of \$1.4 million that will be funded by fees and revenues from the water and sewer services. In the Sept. 13 memo to department heads, Knowles said the personnel cuts have been requested by the mayor. "Now is not too early to start some planning..." the memo states. "I will expect you to each advance some plan to reduce personnel. This may be more effective use of what you now have. It may be by changing schedules; improving equipment; or changing services. This can be a decrease in services or restricting what we now do." Knowles said the city has reduced its payroll already over the past two years from 303 to 288 employees.

HAVE YOU EVER SAID I LOST IT!
I NEED HELP LOSING WEIGHT
Join All Those Saying... "I LOST IT!"
• STATE CERTIFIED COUNSELORS
• NO FAO DIETS
• NO DRUGS, NO EXERCISE
• BEHAVIOR MODIFICATION
• PROVEN, QUICK METHOD
• TRANSACTIONAL ANALYSIS
ANNOUNCING 2 NEW LOCATIONS
255 NORTH LAKEMONT AVE., SUITE 105 WINTER PARK (Across from Winter Park Hospital)
PROFESSIONAL OFFICE COMPLEX, SUITE 105 LONGWOOD VILLAGE SHOPPING CENTER, I-4 & 434
Grand Opening Gift Offer
Save \$15
831-1300 LONGWOOD
ON YOUR INDIVIDUALIZED HEALTH AND WEIGHT LOSS PROGRAM. LIMITED TIME ONLY! CALL NOW! WE CAN HELP!
422-4994 ORLANDO
TRIMCLINIC CONSULTATION
Mon Wed Fri 8:30 A.M. - 7:00 P.M.

What to cut down on if you want to cut down on your electric bill.

Today, everybody is trying to use less electricity. Partly to conserve energy. But mostly to have lower-cost electric bills. Yet many consumers don't know which appliances or products use the most electricity. So they go all out trying to save money without really cutting down on their bills. To help you choose the best ways to conserve energy, we've provided the chart below. Itemized are "typical" appliance usage figures based both on Florida Power & Light research and industry-wide statistics. These figures are intended strictly as examples in that they reflect the average operating costs of various appliances. However, they are a helpful guide to effective cost-cutting. (Also, keep in mind that power usage varies among different product brands; weather conditions; size, location and installation of a home; and each family's pattern of usage.) You'll notice that air-conditioners are the heaviest users. But you can still keep cool, dehumidify your home, and reduce substantial savings on your cooling costs by setting your thermostat at 78 degrees. If your thermostat isn't marked in degrees, place a good thermometer in a room out of the air-conditioning flow to be sure you're maintaining 78 degrees. In addition to the information below, our booklet "HOW TO SAVE MONEY ON YOUR ELECTRIC BILL" will give you many helpful tips on energy conservation. And it's free, at any FPL office. Because at FPL, we want to help you save.

Typical Energy Requirements of Electric Household Appliances

Electric Product	Est. kWh*** Used Monthly	Est. Monthly Cost	Electric Product	Est. kWh*** Used Monthly	Est. Monthly Cost
Food Preparation			Fan		
Baby Food Bottle Warmer	2	9¢	Attic	30	\$1.35
Broiler/Rotisserie	7	32¢	Circulating	4	16¢
Coffee Maker	9	41¢	Rollabout	12	54¢
Deep Fat Fryer	7	32¢	Water Heating and Supply		
Dishwasher	30	\$1.35	Domestic Supply Pump (1/2 HP)	27	\$1.22
Egg Cooker	1	3¢	Pool Pump (1/4 HP)	375	\$16.88
Frying Pan	1	3¢	Sprinkler System (1 1/2 HP)	28	\$1.26
Hot Plate	4	18¢	Water Heater (inclusive of all uses****)		
Microwave Oven	16	72¢	FPL Systemwide Average Use	212	\$9.54
With Oven	58	\$2.61	Average Use, 2 Persons	195	\$8.78
Without Oven	61	\$2.75	Average Use, 4 Persons	310	\$13.95
Roaster	5	23¢	Health and Beauty		
Sandwich Grill	3	14¢	Hair Dryer	2	9¢
Slow Cooker	12	54¢	Hair Roller	1	5¢
Toaster	3	14¢	Heating Pad	1	5¢
Trash Compactor	4	19¢	Infrared Heat Lamp	1	5¢
Waffle Iron	2	9¢	Sun Lamp	1	5¢
Blender, Can Opener, Carving Knife, Fondue Pot, Ice Crusher, Ice Cream Maker, Juicer, Knife Sharpener, Food Mixer, Warming Tray,	each less than 1	each less than 5¢	Curling Iron, Makeup Mirror, Shave Cream Dispenser, Shaver, Toothbrush, Vibrator	each less than 1/2	each less than 3¢
Waste Disposer			Home Entertainment		
Refrigerator, Manual, 12 cu. ft.	78	\$3.51	Radio/Record Player	7	32¢
Refrigerator-Freezer			Television	9	41¢
Manual, 12-14 cu. ft.	125	\$5.63	Black & White, Tube Type	18	81¢
Manual, 14-17 cu. ft.	170	\$7.65	Black & White, Solid State	8	36¢
Frostfree, 17-20 cu. ft.	205	\$9.23	Color, Tube Type	44	\$1.98
Freezer			Color, Solid State	27	\$1.22
Manual, 14 1/2-17 1/2 cu. ft.	135	\$6.08	Housewares		
Frostfree, 14 1/2-17 1/2 cu. ft.	188	\$8.46	Clock	1 1/2	7¢
Laundry Services			Floor Polisher	1	5¢
Dryer	75	\$3.38	Sewing Machine	1	5¢
Hand Iron	5	23¢	Vacuum Cleaner	4	16¢
Washing Machine (Automatic)	9	41¢	Lighting		
Comfort Conditioning Central System*			4-5 Rooms	50	\$2.25
2 Tons	1450	\$65.25	6-8 Rooms	60	\$2.70
3 Tons	2100	\$94.50	Outdoors, 1 Spotlight, All Night	45	\$2.03
4 Tons	2750	\$123.75			
Room Unit**					
1 Ton, EER 6	2 per hr.	9¢ per hr.			
1 Ton, EER 8	1 1/2 per hr.	7¢ per hr.			
3/4 Ton, EER 6	1 1/2 per hr.	7¢ per hr.			
3/4 Ton, EER 8	1 per hr.	5¢ per hr.			
Dehumidifier	31	\$1.40			
Electric Blanket	12	54¢			

* Assumes compressor is continuously thermostatically controlled and operates 50 percent of the time during hottest months. kWh uses substantially less in milder months. Consumption varies greatly with use, thermostat setting, insulation, fan, and other factors.
** Each dishwasher load uses about 2 1/2 kWh for hot water. Each washing machine load uses about 5 kWh for hot water for main cycle and about 1 kWh for warm wash/cool rinse cycle.
*** kWh usage shown is for constant operation of compressor for one hour. When unit is operated full-time on a daily basis, subject to thermostat control, the compressor may cycle off to 40 percent, and the hourly average cost would be lower.
**** Note: energy consumption is measured in kilowatt hours (kWh) — the units of energy which flow through your electric meter. These estimated monthly costs are computed at the rate of 10¢ per kWh, residential customer rate. Approximately 4.5 cents per kWh, including franchise charges, fuel adjustment costs, and local taxes.

Try Brown Bagging It

Apples 'Pear' Up For Spicy Treat

Riddle: What's even better than a fruit dessert? Answer: One made with two fruits. And right now, there are two fresh fruits at the peak of ripeness in your local market...

APPLE PEAR PIE 3 apples, pared, cored and sliced 3 pears, pared, cored, and sliced 1/2 cup sugar 4 tablespoons flour 1/4 tsp. ground nutmeg 1 dash ground cinnamon 1 unbleached 8-inch pastry shell 1 large brown paper bag

SPICY APPLE-PEAR COMPOTE 3 large apples 3 large pears 2 cups sugar 2 cups water 6 thin lemon slices 3 whole cloves 1 tablespoon grated orange rind 1 inch piece cinnamon stick

Remove apple and pear slices to serving dish. Garnish with lemon slices. Bring syrup to a rolling boil and cook until a thin syrup forms, about 5 minutes. Meanwhile, dissolve cornstarch in cold water. Add to sugar and lemon juice. Cook 2 minutes until slightly thickened. Cool; pour over fruit slices.



APPLES AND PEARS A DELICIOUS DUO

With Football Fans This Is Food Bound To Score

One of the best occasions for enjoying all out fun is a tailgate picnic before a roaring afternoon of football. The colorful game time atmosphere is the perfect background for preparing good food with good friends.

No elaborate plans are necessary. Handy cans of meat spreads, eggs, cheese and other kitchen staples can be turned into an impromptu picnic in a matter of minutes.

Beefy Barbecue Wrap-Ups are also warmed in the oven before packing - split onion rolls layered with roast beef spread, chopped green pepper, barbecue sauce and sliced American cheese melted on top.

DEVILED HAM PICNIC BUNDLES 6 rectangular French rolls 2 tablespoons butter or margarine 3 tablespoons minced onion 2 tablespoons dried chives 8 eggs, lightly beaten 1/4 teaspoon black pepper 1 can (4 1/2 ounces) deviled ham

BEFFY BARBECUE WRAP-UPS 1 can (4 1/2 ounces) roast beef spread 2 tablespoons chopped green peppers 2 tablespoons barbecue sauce 4 onion rolls, split and toasted 1/2 cup shredded Cheddar cheese

Preheat oven to 350 degree F. In a bowl, mix together roast beef spread, chopped peppers and barbecue sauce. Spread on bottom halves of onion rolls; top with shredded cheese. Close with tops of rolls. Wrap in foil and bake 10 to 15 minutes. Serve warm. Makes 6 sandwiches.



DEVILED HAM AND OMELET BUNDLES FOR FALL PICNICS



Peanut Butter Crescents Crescents Among 'Best-Ever' Recipes

By CECILY BROWNSTONE Associated Press Food Editor DEAR CECILY: I have a large family and often have to make double recipes to have enough to go around. I realize that most families are smaller and need the usual recipes serving four to six. Is there any reliable cookbook for a mother like me? - WISTFUL

DEAR WISTFUL: "Farm Journal's Best-Ever Recipes" (Doubleday), published in 1977, should help you. It contains 200 recipes yield more servings than the usual small-family ones. In preparing the book, I was amazed by the number of recipes that were published in 1977, should help you. It contains 200 recipes yield more servings than the usual small-family ones.

PEANUT BUTTER CRESCENTS 1/2 cup milk 1/2 cup butter or margarine 1/3 cup sugar 1/2 teaspoon salt 1 package active dry yeast 1 cup warm (110 to 115 degree) water 1 egg, beaten 4 cups sifted flour

Roll dough into lightly floured surface and knead gently. Put into a greased bowl; let rise to double top of dough. Cover and let rise in warm place until doubled, about 1 hour. Turn dough onto lightly floured surface. Divide in half; cover and let rest 15 minutes. Roll each half to 12-inch circle; spread with the Peanut Butter filling; cut each circle into 12 wedges. Roll to each wedge and seal ends and place pointed end down, on greased baking sheets. Curve ends slightly to

EAT OUT AT HOME with ONE DISH MEALS from PUBlix. One dish meals are the easy way to please a hungry family. You'll find our freezer case filled with 'em - from chicken and dumplings to lasagna.

Publix advertisement featuring various food items and prices. Includes: Fried Chicken \$1.89, Party Pizza \$2.79, Fully-Cooked Hams \$7.99, Tea Bags \$1.59, Pillsbury's Biscuits 3 for 45¢, and various meats and seafood.

Publix the place for produce. Assorted Flavors Seal-Tite Ice Milk Light 'N Lively 99¢, Crisco Oil 89¢, Tomato Ketchup 79¢, Fab Detergent 89¢, Seedless Grapes 69¢, and various other grocery items.

Publix advertisement featuring various food items and prices. Includes: White Potatoes 10 for 89¢, Pillsbury's Biscuits 3 for 45¢, Evercane or Colonial Sugar 49¢, and various other grocery items.

Norwegian Pizza: Best Of 2 Worlds. A blend of two worlds makes a good snack for a teen-age party or a late nibble for adult sports fans.

Publix advertisement featuring various food items and prices. Includes: White Potatoes 10 for 89¢, Pillsbury's Biscuits 3 for 45¢, Evercane or Colonial Sugar 49¢, and various other grocery items.

Cook Of The Week. BAKED FISH 4 fillets of fish (re: snapper, grouper, halibut or sole) 1 large green pepper, sliced in rings 2 medium tomatoes, sliced 2 tbs. cream style horseradish 1 lemon, sliced salt and pepper Heavy duty aluminum foil. Sprinkle fish with salt and pepper and place on foil. Layer the green pepper, tomato and onion slices on fish. Evenly spread horseradish over the layer of onion, and sprinkle with salt and pepper. Arrange lemon slices on top. Seal foil tightly and bake in preheated oven at 350 degrees for 35 to 40 min. Remove to serving platter, removing lemon slices, and garnish with fresh lemon slices and parsley. If desired, Very easy to prepare. Salad and dessert are all you need. Tastes a little like "Creole."

Winn-Dixie
THE BEEF PEOPLE
WE ACCEPT USDA
GOOD STAMP COUPONS

SAVE 30¢
W-D BRAND USDA CHOICE
CHUCK ROAST
LB. **79¢**
BEEF CHUCK, INCLUDING 7 BONE CENTER CUT
CHUCK ROAST LB. 99¢

SAVE 60¢
FARLAND
BONELESS CANNED
PICNICS
(SLICED \$4.79)
3 \$3.99
L.B. CAN
W-D PREMIUM BONELESS CANNED (SLICED \$5.29)
HAM 3 CAN \$4.99

SAVE 70¢
W-D BRAND USDA CHOICE
WHOLE BONELESS BOTTOM ROUND
18 TO 24 LB. AVG.
LB. **98¢**
BONELESS BEEF STEAKS
DELMONICO LB. \$2.99

W-D BRAND MILD, MEDIUM OR HOT WHOLE HOG (1 LB. BAG \$2.49) BAG **\$1.29**
KAY'S BEEF EATER **Variety Pack** 12-oz. PKG. \$1.49
KAY'S VARIETY **Snack Pack** 16-oz. PKG. \$1.09
COPELAND'S **Dinner Franks** 16-oz. PKG. \$1.19
SUNSHINE **Sandwich Pack** 8-oz. PKG. 89¢

16-oz. PKG. **99¢**
Superdogs
12-oz. PKG. **\$1.49**
Cooked Ham
SWIFT PREMIUM WHITE MEAT **Turkey Roast** .. 2 LB. BOX **\$3.99**
TASTE OF SA **Perch Fillet** LB. \$1.29
FRESH MARKET GROUND **Round** LB. \$1.29

16-oz. PKG. **\$1.29**
Stew Meat
W-D BRAND, HANTS PACK, ALL SIZES, 100% PURE **Ground Beef** LB. 79¢
WESTERN CORN FED PORK FULL 1/4 FRESH PORK LONGS SLICED **Pork Chops** LB. \$1.49
WESTERN CORN FED PORK FULL 1/4 HALF **Pork Loin** LB. \$1.29
FALMETTO FARMS PIMENTO (8-oz. CUP 99¢) **Cheese Spread** 1/2 CUP 99¢

W-D BRAND U.S. CHOICE
FEDERALLY INSPECTED
HEAVY WESTERN
AGED BEEF

W-D BRAND USDA CHOICE
BONELESS
ROUND ROAST
LB. **\$1.28**
Boneless Beef Round
Rump Roast .. LB. \$1.79
Roast LB. \$1.99

SAVE 20¢
SUPERBRAND SHERBET OR ICE CREAM
HALF GALLON **79¢**
COUNTRY FRESH ALL NATURAL ALL FLAVORS
PRESTIGE ICE CREAM HALF GAL. \$1.49

W-D BRAND USDA CHOICE
BONELESS BOTTOM
ROUND STEAK
LB. **\$1.38**
Boneless Beef Round, Bottom Round
Steak LB. \$1.48

W-D BRAND USDA CHOICE
BONELESS BOTTOM
ROUND STEAK
LB. **\$1.38**
Boneless Beef Round, Bottom Round
Steak LB. \$1.48

W-D BRAND USDA CHOICE
BONELESS BOTTOM
ROUND STEAK
LB. **\$1.38**
Boneless Beef Round, Bottom Round
Steak LB. \$1.48

W-D BRAND USDA CHOICE
BONELESS BOTTOM
ROUND STEAK
LB. **\$1.38**
Boneless Beef Round, Bottom Round
Steak LB. \$1.48

W-D BRAND USDA CHOICE
BONELESS BOTTOM
ROUND STEAK
LB. **\$1.38**
Boneless Beef Round, Bottom Round
Steak LB. \$1.48

W-D BRAND USDA CHOICE
BONELESS BOTTOM
ROUND STEAK
LB. **\$1.38**
Boneless Beef Round, Bottom Round
Steak LB. \$1.48

SAVE 10¢
TROPICAL
LONG GRAIN RICE
3 LB. BAG **59¢**

ALL FLAVORS
CHEK DRINKS
18-oz. CAN **\$1**

W-D BRAND USDA CHOICE
BONELESS BOTTOM
ROUND STEAK
LB. **\$1.38**
Boneless Beef Round, Bottom Round
Steak LB. \$1.48

W-D BRAND USDA CHOICE
BONELESS BOTTOM
ROUND STEAK
LB. **\$1.38**
Boneless Beef Round, Bottom Round
Steak LB. \$1.48

W-D BRAND USDA CHOICE
BONELESS BOTTOM
ROUND STEAK
LB. **\$1.38**
Boneless Beef Round, Bottom Round
Steak LB. \$1.48

W-D BRAND USDA CHOICE
BONELESS BOTTOM
ROUND STEAK
LB. **\$1.38**
Boneless Beef Round, Bottom Round
Steak LB. \$1.48

SAVE 30¢
ARROW DETERGENT
Limit 1 with \$2.00 or more purchase excl. cig. 49-oz. PKG. **79¢**

W-D BRAND USDA CHOICE
BONELESS BOTTOM
ROUND STEAK
LB. **\$1.38**
Boneless Beef Round, Bottom Round
Steak LB. \$1.48

W-D BRAND USDA CHOICE
BONELESS BOTTOM
ROUND STEAK
LB. **\$1.38**
Boneless Beef Round, Bottom Round
Steak LB. \$1.48

W-D BRAND USDA CHOICE
BONELESS BOTTOM
ROUND STEAK
LB. **\$1.38**
Boneless Beef Round, Bottom Round
Steak LB. \$1.48

W-D BRAND USDA CHOICE
BONELESS BOTTOM
ROUND STEAK
LB. **\$1.38**
Boneless Beef Round, Bottom Round
Steak LB. \$1.48

W-D BRAND USDA CHOICE
BONELESS BOTTOM
ROUND STEAK
LB. **\$1.38**
Boneless Beef Round, Bottom Round
Steak LB. \$1.48

W-D BRAND USDA CHOICE
BONELESS BOTTOM
ROUND STEAK
LB. **\$1.38**
Boneless Beef Round, Bottom Round
Steak LB. \$1.48

W-D BRAND USDA CHOICE
BONELESS BOTTOM
ROUND STEAK
LB. **\$1.38**
Boneless Beef Round, Bottom Round
Steak LB. \$1.48

W-D BRAND USDA CHOICE
BONELESS BOTTOM
ROUND STEAK
LB. **\$1.38**
Boneless Beef Round, Bottom Round
Steak LB. \$1.48

W-D BRAND USDA CHOICE
BONELESS BOTTOM
ROUND STEAK
LB. **\$1.38**
Boneless Beef Round, Bottom Round
Steak LB. \$1.48

W-D BRAND USDA CHOICE
BONELESS BOTTOM
ROUND STEAK
LB. **\$1.38**
Boneless Beef Round, Bottom Round
Steak LB. \$1.48

W-D BRAND USDA CHOICE
BONELESS BOTTOM
ROUND STEAK
LB. **\$1.38**
Boneless Beef Round, Bottom Round
Steak LB. \$1.48

W-D BRAND USDA CHOICE
BONELESS BOTTOM
ROUND STEAK
LB. **\$1.38**
Boneless Beef Round, Bottom Round
Steak LB. \$1.48

W-D BRAND USDA CHOICE
BONELESS BOTTOM
ROUND STEAK
LB. **\$1.38**
Boneless Beef Round, Bottom Round
Steak LB. \$1.48

SAVE 46¢
WESSON OIL
Limit 1 with \$3.00 or more purchase excl. cig. 48-oz. BTL. **\$1.59**

W-D BRAND USDA CHOICE
BONELESS BOTTOM
ROUND STEAK
LB. **\$1.38**
Boneless Beef Round, Bottom Round
Steak LB. \$1.48

SAVE 20¢
HUNT'S KETCHUP
32-oz. BTL. **69¢**

W-D BRAND USDA CHOICE
BONELESS BOTTOM
ROUND STEAK
LB. **\$1.38**
Boneless Beef Round, Bottom Round
Steak LB. \$1.48

SAVE WITH WINN-DIXIE
THE BEEF PEOPLE
NEW CROP HARVEST FRESH
EASTERN RED DELICIOUS
APPLES
4 LB. BAG **79¢**
HARVEST FRESH, YEXAR BAG, EASTERN RED DELICIOUS
APPLES 16 FOR \$1.99

SAVE 50¢
BLUE RIBBON BEER
12-oz. CANS **\$2.79**

W-D BRAND USDA CHOICE
BONELESS BOTTOM
ROUND STEAK
LB. **\$1.38**
Boneless Beef Round, Bottom Round
Steak LB. \$1.48

SAVE 33¢
FRUIT COCKTAIL
3 16-oz. CANS **\$1**

W-D BRAND USDA CHOICE
BONELESS BOTTOM
ROUND STEAK
LB. **\$1.38**
Boneless Beef Round, Bottom Round
Steak LB. \$1.48

SAVE 20¢
NEW CROP HARVEST FRESH
EASTERN RED DELICIOUS
APPLES
4 LB. BAG **79¢**
HARVEST FRESH, YEXAR BAG, EASTERN RED DELICIOUS
APPLES 16 FOR \$1.99

SAVE 18¢
PINEBREEZE OR SUPERBRAND LARGE EGGS
DOZ. **53¢**

W-D BRAND USDA CHOICE
BONELESS BOTTOM
ROUND STEAK
LB. **\$1.38**
Boneless Beef Round, Bottom Round
Steak LB. \$1.48

SAVE 18¢
PINEBREEZE OR SUPERBRAND LARGE EGGS
DOZ. **53¢**

W-D BRAND USDA CHOICE
BONELESS BOTTOM
ROUND STEAK
LB. **\$1.38**
Boneless Beef Round, Bottom Round
Steak LB. \$1.48

SAVE WITH WINN-DIXIE
THE BEEF PEOPLE
NEW CROP HARVEST FRESH
NEW CROP BARTLETT
PEARS
3 LBS. **99¢**

SAVE 50¢
BLUE RIBBON BEER
12-oz. CANS **\$2.79**

W-D BRAND USDA CHOICE
BONELESS BOTTOM
ROUND STEAK
LB. **\$1.38**
Boneless Beef Round, Bottom Round
Steak LB. \$1.48

SAVE 33¢
FRUIT COCKTAIL
3 16-oz. CANS **\$1**

W-D BRAND USDA CHOICE
BONELESS BOTTOM
ROUND STEAK
LB. **\$1.38**
Boneless Beef Round, Bottom Round
Steak LB. \$1.48

SAVE WITH WINN-DIXIE
THE BEEF PEOPLE
NEW CROP HARVEST FRESH
HARVEST FRESH U.S. NO. 1
POTATOES
10 LB. BAG **99¢**

SAVE 38¢
JUMBO SCOTT PAPER TOWELS
Limit 1 with \$3.00 or more purchase excl. cig. 2 ROLLS **\$1.00**

W-D BRAND USDA CHOICE
BONELESS BOTTOM
ROUND STEAK
LB. **\$1.38**
Boneless Beef Round, Bottom Round
Steak LB. \$1.48

SAVE 18¢
PINEBREEZE OR SUPERBRAND LARGE EGGS
DOZ. **53¢**

W-D BRAND USDA CHOICE
BONELESS BOTTOM
ROUND STEAK
LB. **\$1.38**
Boneless Beef Round, Bottom Round
Steak LB. \$1.48

SAVE WITH WINN-DIXIE
THE BEEF PEOPLE
NEW CROP HARVEST FRESH
HARVEST FRESH YELLOW COOKING
ONIONS
5 LB. BAG **79¢**

SAVE 50¢
STRAWBERRY PRESERVES
2 16-oz. CANS **88¢**

W-D BRAND USDA CHOICE
BONELESS BOTTOM
ROUND STEAK
LB. **\$1.38**
Boneless Beef Round, Bottom Round
Steak LB. \$1.48

SAVE 21¢
CREAM STYLE OR WHOLE KERNEL CORN
4 16-oz. CANS **88¢**

W-D BRAND USDA CHOICE
BONELESS BOTTOM
ROUND STEAK
LB. **\$1.38**
Boneless Beef Round, Bottom Round
Steak LB. \$1.48

SAVE WITH WINN-DIXIE
THE BEEF PEOPLE
NEW CROP HARVEST FRESH
HARVEST FRESH NEW CROP
RUTABAGAS
2 LBS. **29¢**

SAVE 50¢
STRAWBERRY PRESERVES
2 16-oz. CANS **88¢**

W-D BRAND USDA CHOICE
BONELESS BOTTOM
ROUND STEAK
LB. **\$1.38**
Boneless Beef Round, Bottom Round
Steak LB. \$1.48

SAVE 21¢
CREAM STYLE OR WHOLE KERNEL CORN
4 16-oz. CANS **88¢**

W-D BRAND USDA CHOICE
BONELESS BOTTOM
ROUND STEAK
LB. **\$1.38**
Boneless Beef Round, Bottom Round
Steak LB. \$1.48

SAVE WITH WINN-DIXIE
THE BEEF PEOPLE
NEW CROP HARVEST FRESH
HARVEST FRESH FLORIDA
LIMES
11 FOR **99¢**

FRENCH AVE. & 25th ST.
419 E. FIRST ST.
SANFORD

REALTY TRANSFERS

Johnston to Samuel Johnson & ... Jack M. Sipey & Wm. R. ... Thomas Jefferson & Wm. G. ...

Legal Notice

IN THE CIRCUIT COURT OF THE ... ROSELLE SAVINGS AND LOAN ...

Legal Notice

Notice is hereby given that ... William J. Krygier and ...

Legal Notice

Notice is hereby given that ... William D. Riske and ...

Legal Notice

Notice of Partition for ... William D. Riske and ...

Legal Notice

Notice of Partition for ... William D. Riske and ...

Legal Notice

Notice of Partition for ... William D. Riske and ...

Legal Notice

Notice of Partition for ... William D. Riske and ...

Legal Notice

Notice of Partition for ... William D. Riske and ...

Legal Notice

Notice of Partition for ... William D. Riske and ...

Legal Notice

Notice of Partition for ... William D. Riske and ...

Legal Notice

Notice of Partition for ... William D. Riske and ...

Legal Notice

Notice of Partition for ... William D. Riske and ...

Legal Notice

IN THE CIRCUIT COURT OF THE ... ROSELLE SAVINGS AND LOAN ...

Legal Notice

Notice is hereby given that ... William J. Krygier and ...

Legal Notice

Notice is hereby given that ... William D. Riske and ...

Legal Notice

Notice of Partition for ... William D. Riske and ...

Legal Notice

Notice of Partition for ... William D. Riske and ...

Legal Notice

Notice of Partition for ... William D. Riske and ...

Legal Notice

Notice of Partition for ... William D. Riske and ...

Legal Notice

Notice of Partition for ... William D. Riske and ...

Legal Notice

Notice of Partition for ... William D. Riske and ...

Legal Notice

Notice of Partition for ... William D. Riske and ...

Legal Notice

Notice of Partition for ... William D. Riske and ...

Legal Notice

Notice of Partition for ... William D. Riske and ...

Legal Notice

Notice of Partition for ... William D. Riske and ...

Legal Notice

IN THE CIRCUIT COURT OF THE ... ROSELLE SAVINGS AND LOAN ...

Legal Notice

Notice is hereby given that ... William J. Krygier and ...

Legal Notice

Notice is hereby given that ... William D. Riske and ...

Legal Notice

Notice of Partition for ... William D. Riske and ...

Legal Notice

Notice of Partition for ... William D. Riske and ...

Legal Notice

Notice of Partition for ... William D. Riske and ...

Legal Notice

Notice of Partition for ... William D. Riske and ...

Legal Notice

Notice of Partition for ... William D. Riske and ...

Legal Notice

Notice of Partition for ... William D. Riske and ...

Legal Notice

Notice of Partition for ... William D. Riske and ...

Legal Notice

Notice of Partition for ... William D. Riske and ...

Legal Notice

Notice of Partition for ... William D. Riske and ...

Legal Notice

Notice of Partition for ... William D. Riske and ...

Legal Notice

IN THE CIRCUIT COURT OF THE ... ROSELLE SAVINGS AND LOAN ...

Legal Notice

Notice is hereby given that ... William J. Krygier and ...

Legal Notice

Notice is hereby given that ... William D. Riske and ...

Legal Notice

Notice of Partition for ... William D. Riske and ...

Legal Notice

Notice of Partition for ... William D. Riske and ...

Legal Notice

Notice of Partition for ... William D. Riske and ...

Legal Notice

Notice of Partition for ... William D. Riske and ...

Legal Notice

Notice of Partition for ... William D. Riske and ...

Legal Notice

Notice of Partition for ... William D. Riske and ...

Legal Notice

Notice of Partition for ... William D. Riske and ...

Legal Notice

Notice of Partition for ... William D. Riske and ...

Legal Notice

Notice of Partition for ... William D. Riske and ...

Legal Notice

Notice of Partition for ... William D. Riske and ...

Legal Notice

IN THE CIRCUIT COURT OF THE ... ROSELLE SAVINGS AND LOAN ...

Legal Notice

Notice is hereby given that ... William J. Krygier and ...

Legal Notice

Notice is hereby given that ... William D. Riske and ...

Legal Notice

Notice of Partition for ... William D. Riske and ...

Legal Notice

Notice of Partition for ... William D. Riske and ...

Legal Notice

Notice of Partition for ... William D. Riske and ...

Legal Notice

Notice of Partition for ... William D. Riske and ...

Legal Notice

Notice of Partition for ... William D. Riske and ...

Legal Notice

Notice of Partition for ... William D. Riske and ...

Legal Notice

Notice of Partition for ... William D. Riske and ...

Legal Notice

Notice of Partition for ... William D. Riske and ...

Legal Notice

Notice of Partition for ... William D. Riske and ...

Legal Notice

Notice of Partition for ... William D. Riske and ...

Legal Notice

IN THE CIRCUIT COURT OF THE ... ROSELLE SAVINGS AND LOAN ...

Legal Notice

Notice is hereby given that ... William J. Krygier and ...

Legal Notice

Notice is hereby given that ... William D. Riske and ...

Legal Notice

Notice of Partition for ... William D. Riske and ...

Legal Notice

Notice of Partition for ... William D. Riske and ...

Legal Notice

Notice of Partition for ... William D. Riske and ...

Legal Notice

Notice of Partition for ... William D. Riske and ...

Legal Notice

Notice of Partition for ... William D. Riske and ...

Legal Notice

Notice of Partition for ... William D. Riske and ...

Legal Notice

Notice of Partition for ... William D. Riske and ...

Legal Notice

Notice of Partition for ... William D. Riske and ...

Legal Notice

Notice of Partition for ... William D. Riske and ...

Legal Notice

Notice of Partition for ... William D. Riske and ...

Legal Notice

IN THE CIRCUIT COURT OF THE ... ROSELLE SAVINGS AND LOAN ...

Legal Notice

Notice is hereby given that ... William J. Krygier and ...

Legal Notice

Notice is hereby given that ... William D. Riske and ...

Legal Notice

Notice of Partition for ... William D. Riske and ...

Legal Notice

Notice of Partition for ... William D. Riske and ...

Legal Notice

Notice of Partition for ... William D. Riske and ...

Legal Notice

Notice of Partition for ... William D. Riske and ...

Legal Notice

Notice of Partition for ... William D. Riske and ...

Legal Notice

Notice of Partition for ... William D. Riske and ...

Legal Notice

Notice of Partition for ... William D. Riske and ...

Legal Notice

Notice of Partition for ... William D. Riske and ...

Legal Notice

Notice of Partition for ... William D. Riske and ...

Legal Notice

Notice of Partition for ... William D. Riske and ...

Legal Notice

IN THE CIRCUIT COURT OF THE ... ROSELLE SAVINGS AND LOAN ...

Legal Notice

Notice is hereby given that ... William J. Krygier and ...

Legal Notice

Notice is hereby given that ... William D. Riske and ...

Legal Notice

Notice of Partition for ... William D. Riske and ...

Legal Notice

Notice of Partition for ... William D. Riske and ...

Legal Notice

Notice of Partition for ... William D. Riske and ...

Legal Notice

Notice of Partition for ... William D. Riske and ...

Legal Notice

Notice of Partition for ... William D. Riske and ...

Legal Notice

Notice of Partition for ... William D. Riske and ...

Legal Notice

Notice of Partition for ... William D. Riske and ...

Legal Notice

Notice of Partition for ... William D. Riske and ...

Legal Notice

Notice of Partition for ... William D. Riske and ...

Legal Notice

Notice of Partition for ... William D. Riske and ...

Don't be left out... join the thousands who read The Evening Herald... COMPLETE FOOD SECTION featuring Great Food Bargains... every Wednesday from a wide variety of grocery aids...

Mariner's Village LAKESIDE APARTMENTS... 1 Bedroom - \$145 mo. 2 Bedroom - \$175 mo. Beautiful Setting Pool & Clubhouse... Call 305-668-5144

AAA EMPLOYMENT... SERVICE WRITER AUTO PARTS MECHANICS... GREEN HOUSE WORKERS... Call 305-668-5144

Call Bart... 42-Mobile Homes... 43-Lots-Acreage... 44-Home Furnishings... 45-Plumbing & Accessories... 46-Home Furnishings... 47-A-Mortgages Bought & Sold... 48-Office Supplies... 49-Country Property... 50-Miscellaneous for Sale... 51-Household Goods... 52-Tools... 53-Tools... 54-Garage Sales... 55-Plumbing & Accessories... 56-Home Furnishings... 57-Home Furnishings... 58-Home Furnishings... 59-Home Furnishings... 60-Home Furnishings... 61-Building Materials... 62-Lawn-Garden... 63-Home Furnishings... 64-Equipment for Rent... 65-Pets-Supplies... 66-Home Furnishings... 67-Home Furnishings... 68-Home Furnishings... 69-Home Furnishings... 70-Home Furnishings... 71-Home Furnishings... 72-Home Furnishings... 73-Home Furnishings... 74-Home Furnishings... 75-Home Furnishings... 76-Home Furnishings... 77-Home Furnishings... 78-Home Furnishings... 79-Home Furnishings... 80-Home Furnishings... 81-Home Furnishings... 82-Home Furnishings... 83-Home Furnishings... 84-Home Furnishings... 85-Home Furnishings... 86-Home Furnishings... 87-Home Furnishings... 88-Home Furnishings... 89-Home Furnishings... 90-Home Furnishings... 91-Home Furnishings... 92-Home Furnishings... 93-Home Furnishings... 94-Home Furnishings... 95-Home Furnishings... 96-Home Furnishings... 97-Home Furnishings... 98-Home Furnishings... 99-Home Furnishings... 100-Home Furnishings...



ACROSS and DOWN crossword puzzle grid with clues

HOROSCOPE

By BERNICE BEDE OSOL. For Thursday, September 29, 1977. YOUR BIRTHDAY... SEPTEMBER 29... ARIES (March 21-April 19)...

Exercise Not Fat Solution

DEAR DR. LAMB - I would like your advice on how to lose fat in specific areas. I'm 15 years old, 5 feet 2, and weigh 114. The fat accumulates on the inside of my knees, thighs and hips. I exercise, but I'm losing everywhere but there.

DEAR DR. LAMB - I would like your advice on how to lose fat in specific areas. I'm 15 years old, 5 feet 2, and weigh 114. The fat accumulates on the inside of my knees, thighs and hips. I exercise, but I'm losing everywhere but there.

DEAR DR. LAMB - I would like your advice on how to lose fat in specific areas. I'm 15 years old, 5 feet 2, and weigh 114. The fat accumulates on the inside of my knees, thighs and hips. I exercise, but I'm losing everywhere but there.

DEAR DR. LAMB - I would like your advice on how to lose fat in specific areas. I'm 15 years old, 5 feet 2, and weigh 114. The fat accumulates on the inside of my knees, thighs and hips. I exercise, but I'm losing everywhere but there.

WIN AT BRIDGE

By OSWALD and JAMES JACOBY. East's jump to four spades put considerable pressure on South and each South solved his problem by bidding five notrump.

Happy 100th Birthday Today, Sanford Evening Herald

70th Year, No. 34—Thursday, September 29, 1977 Sanford, Florida 32771—Price 10 Cents

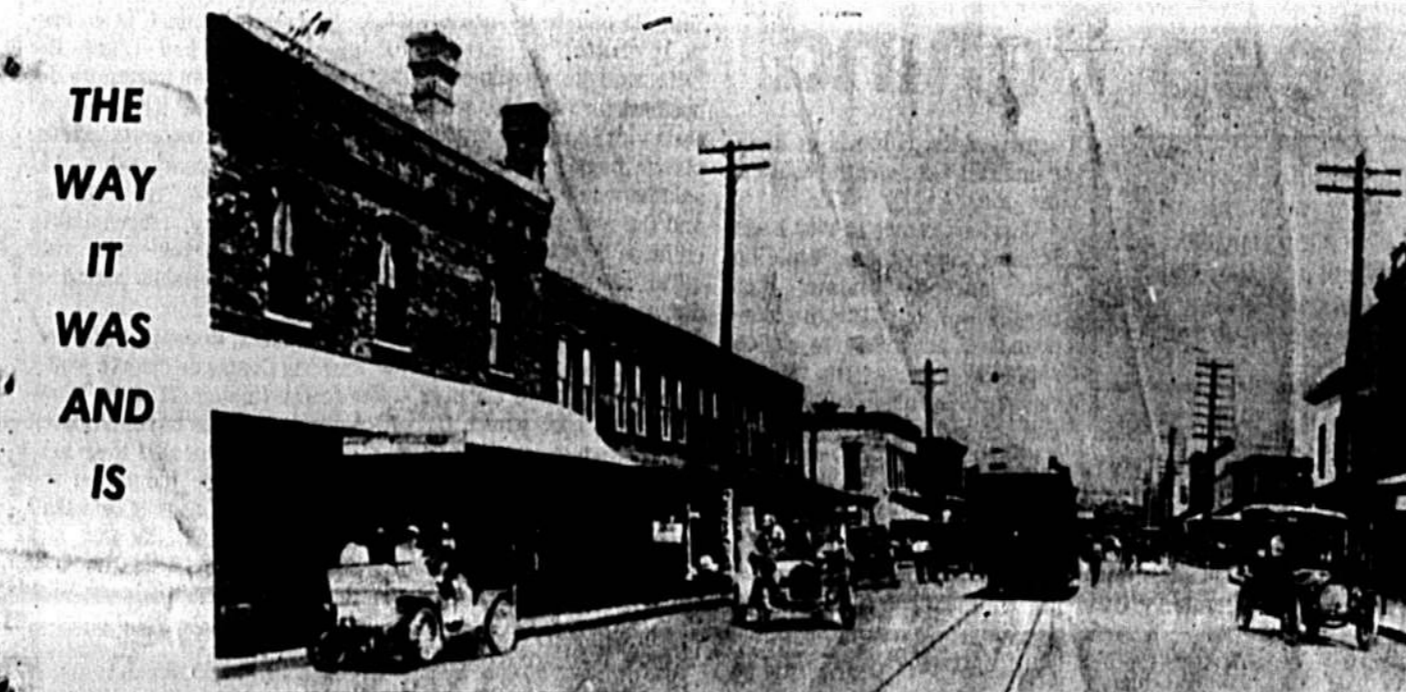
Dateless Widow, 77, Barred From Dance

'Should I Pick Up A Man?'

ST. PETERSBURG, Fla. (AP) - A 77-year-old widow wants to go to a neighborhood dance so much that she's enlisted the aid of the FBI. For \$1.25 on a Friday night, Marie Roche used to go to a nearby condominium and twirl around the dance floor or just sit and tap her toes to the music.



SKETCH BY RON BECK



A main drag in a main drag, right? Well, sort of. Check, for instance, the changes in Sanford's First Street (1916, above; 1977, below). Today would be a good day for the check, as the city marks its official 100th birthday. And more downtown changes are on the way as the Greater Sanford Development Corp., spurred by the city's allocation of \$36,000 for the downtown facelift, is gearing for the first phase of its project. (Editorial, Page 4A)

Did TV Influence Hostage Act By Seminole Man?

A Chuluota man who barricaded himself in his southeast Seminole home threatening to kill his three children was taken out of the act by a Seminole sheriff's deputy after nearly three hours of negotiating. John Spolski, communications supervisor with the sheriff's office, said a recent airing of the "Lou Grant" show favorably affected his performance during three hours of negotiations with the Chuluota man.

Courts No Longer Collect Surcharge...

By JANE CASSELLBERRY. Judge Dickey said Beckwith was ordered by him on Sept. 8 to no longer collect the \$30 a month civil penalty under the state law from persons not required by law to make a court appearance. Dickey also ordered Beckwith to retain all traffic fine surcharge funds being held in escrow here pending a Supreme Court decision on whether they should be refunded.

...A Break For Some

If you are a driver who needs to swap a valid, out-of-state driver's license for a Florida operator's license but have an aversion to playing 20-questions, now is the time to do it. Out-of-state drivers, who ordinarily are required to take a 20-question written examination on Florida road laws, under a temporary ruling by state officials, are getting a break in Seminole as well as other Florida counties, according to E. L. Swanson, local Driver License Examining Officer Supervisor. Because of a shortage of Florida Driver's Handbooks, they are only being required to take the road sign identification test, he said.

Table with 4 columns: Today, Around The Clock, Bridge, Calendar, Comics, Crossword, Editorial, Dear Abby, Dr. Lamb, Horoscope, Hospital, OURSELVES, Sports, Television, Weather.