

...THE HOPE OF OUR COMMUNITY, OUR NATION!

The Church...



Adventist THE SEVENTH DAY ADVENTIST CHURCH...

Baptist FIRST BAPTIST CHURCH...

Assembly Of God FIRST ASSEMBLY OF GOD CHURCH...

Baptist CENTRAL BAPTIST CHURCH...

Baptist LARK MARY CHURCH...

Independent Baptist Mission PINECREST BAPTIST CHURCH...

United Methodist Church PALMETTO AVENUE UNITED METHODIST CHURCH...

United Methodist Church PINETREE BAPTIST CHURCH...

United Methodist Church CHURCH OF CHRIST...

LOST PUPPY FOUND

The puppy had been gone for hours. A small boy stood, nose pressed against the screen, staring at the empty evening...



High moments can't be assessed by material standards. But each inspiring revelation of God's love brings us closer to understanding Him and the Truth of His whole creation...

Table with columns for days of the week and church names, listing services and times.

Church Of God CHURCH OF GOD 323 W. 27th Street...

Church Of God OF PROSPERITY 25th Street and Elm Ave...

Lutheran LUTHERAN CHURCH OF THE REDUCTION...

Methodist GRACE UNITED METHODIST CHURCH...

Methodist METHODIST CHURCH...

Methodist COMMUNITY UNITED METHODIST CHURCH...

Methodist FIRST UNITED METHODIST CHURCH...

Methodist PAOLA WESLEYAN CHURCH...

Methodist THE LAKE MONROE CHAPEL...

Moravian ROLLING HILLS MORAVIAN CHURCH...

Moravian GENEVA CHURCH OF THE NAZARENE...

Moravian FIRST CHURCH OF THE NAZARENE...

Moravian LAKELAND BIBLE TABERNACLE...

Moravian BIBLE TABERNACLE...

Moravian COVENANT PRESBYTERIAN CHURCH...

Moravian THE LAKE MARY UNITED PRESBYTERIAN CHURCH...

Moravian UPSALA PRESBYTERIAN CHURCH...

Moravian CHURCH OF CHRIST...

Sunday Edition - 20 Cents

Football

Table with football scores: Tallahassee Leon 62, Jax Raines 21, Merritt Island 24, Winter Park 7, St. Pete Seminole 20, Tampa King 13.

Table with football scores: Hollywood Hills 31, Miami Central 7, N. Smyrna Beach 44, Haines City 27, Cardinal Mooney 16, Moore Haven 0.

Basketball

Table with basketball scores: Lyman 61, Sanford 59, Evans 60, Martin Co. 60, Sanford Naval 29, Lake Brantley 25, Stranahan 64, Boone 57, H'wood McArthur 56, Colonial 49, Key West 75, Edgewater 62.

SPORTS REPORT

The Sanford Herald

Sunday, December 3, 1972—Sanford, Florida 32771 65th Year, No. 79 Price 20 Cents



By John A. Spolaki

Askew Upset; Wanted Equal Women's Bill

Wanna feel good... look around the house and see if you don't have some used and maybe even broken toys lying around and not being used by the kids...

When the Legislature adjourned at 2:15 p.m. Friday, Askew had 9 of 10 measures he had asked for...

One of the most rugged sports anywhere is called Rugby. And in the event you haven't even seen one of these contests, this would be an excellent time to watch it firsthand...

FROM THE MAILBAG: Invitation to the demonstration by Florida Gas Company and Shell Oil Company...

CLIPPED this one from The Reader's Digest - Next time you become discouraged over the slow progress of nations trying to reach agreement on large issues such as peace, disarmament, international borders, tariffs, remember the rocky road that had to be traveled just to get two fellows together to play a game of chess in Iceland.

The reason pollution control is so slow to catch on is that it's not until YOU're resuscitated, endangered that you wake up.

County, DOT Confer 4-Laning of 17-92 Deleted

By ANN SIECZKOWSKI

County Commissioners together with County Engineer Bill Bush trekked to Deland on Friday afternoon to discuss some solutions to Seminole County Road problems with DOT officials...

Designation of roads does not necessarily make funds available. Chairman Greg Drummond pointed out that to stay on the present schedule of spending \$50,000 for preliminary engineering of Mainland Boulevard from 436 to Red Bag Road...

Scarborough said hearings would be held in Pensacola, Jacksonville, Tampa and Miami, and a recommendation prepared for by the April-May regular session.

The Legislature even passed a bill Askew didn't call for. State Comptroller Fred Dickinson successfully sought authority to regulate out-of-state banking firms setting up investment advisory services in Florida.

Turner, 43 Others Charged By Canada (TORONTO AP) - Canadian charges have been filed against 44 Americans, including self-proclaimed American millionaire Glenn W. Turner...

Warrants were issued for 14 Americans, including Turner, and 30 Canadians, police said. The companies named in the charges were Dare to be Great of Canada Ltd., Dare to be Great of Canada 1971 Ltd., and Dare to be Great, a division of Koscot Ltd.

Area deaths: 2A Bridge 2C Calendar 3A Classified ads 6D-7D Crossword puzzle 8C-9C Editorial comment 10A Horoscope 11A-12A Hospital notes 13A-14A Real Estate 15A-16A Society 17A-18A TV

in many areas, according to Benefield. "The cities, in many cases, are using the funds in other areas of their own choice for such things as reducing the ad valorem taxes. Programs which would otherwise have been funded by ad valorem taxes are now being funded wholly or partially by the gasoline tax moneys which would have been spent on the road programs if the county still received the funds."

One outbreak which directly affects Seminole County is the deletion of the four laning of 17-92 along the lake from which had previously been on the five year road program. DOT says that the money previously assigned to this project could now be justifiably spent elsewhere.

Designation of roads does not necessarily make funds available. Chairman Greg Drummond pointed out that to stay on the present schedule of spending \$50,000 for preliminary engineering of Mainland Boulevard from 436 to Red Bag Road...

Officials said they were investigating the cause of the blaze. The blaze started at 2 a.m. and was under control by 4 a.m., Orlando Fire Chief Melvin Rivenbark said.

Paralyzed Glen Horton Better Plight Of Parents Now Is To Find Hospital To Accept Him. "Faith consists in believing when it is beyond the power of reason to believe" wrote Voltaire...

Sanford Atlantic Bank Considers Stock Exchange. According to Hodges the over-the-counter-traded Atlantic Bancorporation stock price on Nov. 29 was \$29.30 per share...

Sanford Atlantic Bank Considers Stock Exchange. According to Hodges the over-the-counter-traded Atlantic Bancorporation stock price on Nov. 29 was \$29.30 per share...

Sanford Atlantic Bank Considers Stock Exchange. According to Hodges the over-the-counter-traded Atlantic Bancorporation stock price on Nov. 29 was \$29.30 per share...

Sanford Atlantic Bank Considers Stock Exchange. According to Hodges the over-the-counter-traded Atlantic Bancorporation stock price on Nov. 29 was \$29.30 per share...

Editorial Comment

Controversial Comments On Education

It was once written "the hottest places in hell are reserved for those who, in times of moral crisis maintain their neutrality." And so, we again comment upon the controversial subject of local education.

We commend the League of Women Voters who recently endorsed a program offering a positive alternative to school expulsion which we have never felt to be an ultimate solution. Known as the Social Adjustment Education Program it was proposed by Seminole Community Action, Inc. and is being considered by the School Board. It is, to their credit, endorsed by secondary principals and county administrative personnel. Help will be offered to disruptive students who are now being "cast off" in society to roam the streets with all the ramifications of potential trouble.

Also, we applaud Seminole High School for the change from academic to a vocational program for those students not inclined toward college pursuit. Too, it's refreshing to note changes in outdated and outdated curriculum... it never made sense to require a youth interested in mechanics to peruse the plight of Macbeth.

We have received many calls and letters from parents concerning situations at various schools which warrant investigation, and we will report on these in weeks to come.

One esteemed local businessman wrote to the late Stafford Derby "in most vocations you have to earn the right to continued employment by improving performance, not just "hang in there year after year." He also commented that professional educational groups will resist change... "after all," he said, it is not easy to

Hats Off

The Duke of Wellington believed that the battle of Waterloo was won on the playing fields of Eton, that famous prep school and citadel of British tradition. One of Eton's more visible traditions has just met its Waterloo.

Eton boys have been kicking up their heels because they had to wear black coats, white wing collars and top hats everywhere they went. With the school magazine declaring that the costume is "conspicuously idiotic," the rule has now been relaxed.

That means Eton boys will look like any others when they stroll through the streets. We hope they are not disappointed if they discover they feel rather ordinary, too. A top hat may look idiotic, but we doubt if anyone ever put one on without feeling he had something special to offer to the world.

The Sanford Herald

TELEPHONE 327 2611 831 9993
300 N. FRENCH AVE., SANFORD, FLA. 32711

WALTER A. DIELOU, Editor and Publisher
FRANK VOLTOLINE, Circulation Manager
JOHN A. SPOLSKI, Associate Editor
FRED VAN PELT, Managing Editor
WILKIN P. GRIELW, Comptroller
GARY TAYLOR, Sports Editor
ROY GREEN, Advertising Manager
JANE CASSELLBERRY, County Editor
CHARLES HAYS, Mechanical Supt.
DORIS WILLIAMS, Society Editor
RALPH HAYS, Comp. Room Foreman
BILL VINCENT, JR., Staff Photographer
RAY STEVENS, Press Room Foreman

SUBSCRIPTION RATES

Home Delivery 55c Week \$2.40 Month \$14.20 6 Months \$76.40 1 Year \$132.40
By Mail In Florida Same As Home Delivery
All Other Mail \$2.70 Month 6 Months \$16.20 12 mos. \$32.40
U.S. Postal Regulations provide that all subscriptions are paid in advance.

No part of any material, news or advertising in this edition of The Sanford Herald may be reproduced in any manner without written permission of the publisher of The Herald. Any individual or firm responsible for such reproduction will be considered as infringing on The Herald's copyright and will be held liable for damage under the law. Published daily and Sundays, except Saturday.

Herald Area Correspondents

Altamonte Springs Marilyn Gordon 831-6975	Fern Park E. Estates Goldscrod Eastbrook Marilyn Gordon 831-6975
Bear Lake - Forest City Ann Riley 831-9959	Lake Mary Ann Siedzowski 327-8704
Casselberry - Applewood Kathy Niblick 838-7150 Marilyn Gordon 831-6975	Lake Monroe 327-2611 Longwood Ann Riley 831-9959
Chuluota Lisa Baker 550 S. 3rd St. Chuluota	Winter Springs Nancy Booth 322-4735
Colored Community Marva Hawkins 322-5418	Osteen Mrs. Clarence Snyder 322-4841
Deltona - DeBary Elanripise Fannie Edwards 468-8345	Geneva-Oviedo Blavier Liz Matheux 347-2255

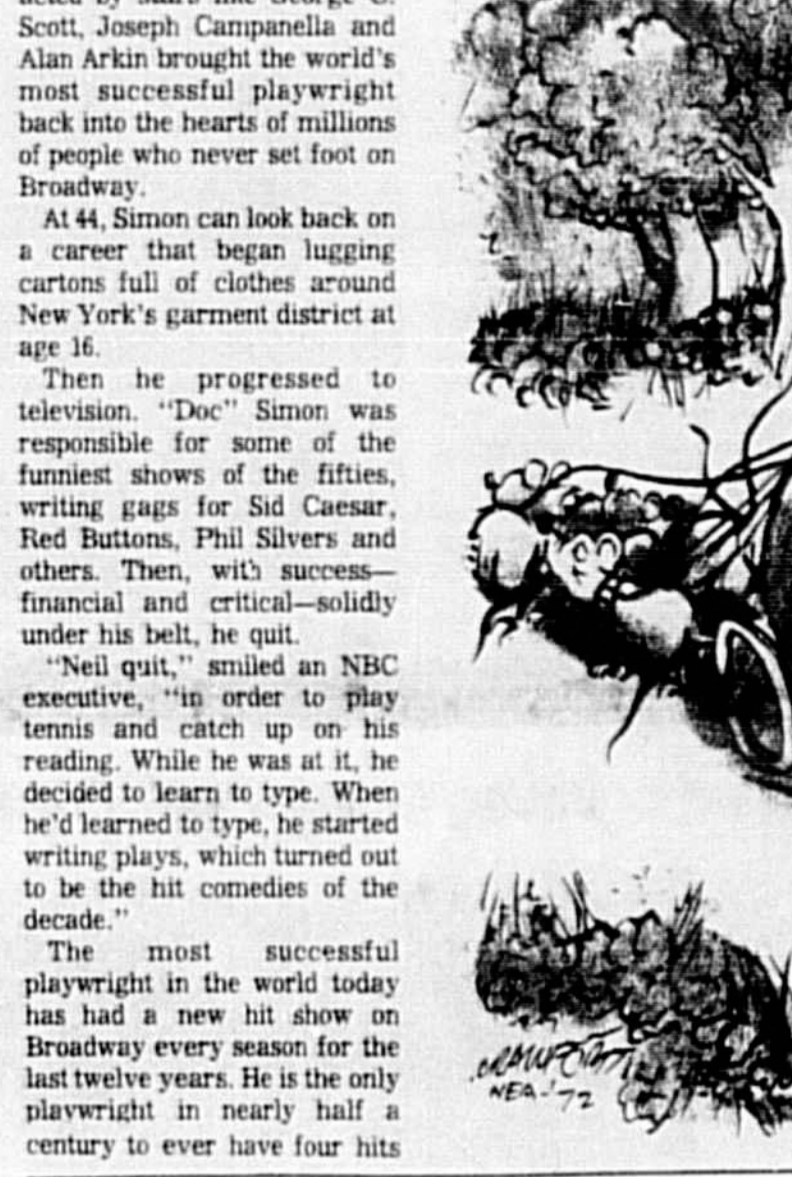
change one's thinking after a half century of standpointism." And yet with this in mind this reporter has received criticism for exposing the fact that no English books are in use in a class at Croombs High School although Florida state statute 233.43 states that it is the duty and responsibility of each superintendent for requisition of textbooks to transmit before June 20 of each school year to the Department of Education for additional books needed for the following school year. Also to see that all textbooks furnished by the state and needed in the district are properly requisitioned and distributed.

Neil Simon

The Man Who Saved Broadway

By CIMA STAR
Copley News Service
Neil Simon, surrounded by friends and admirers, well-wishers and just plain onlookers kept smiling his pleasant, lower Eastside ice cream vendor's smile. The party was in Simon's honor, to celebrate his return to television after nearly a decade and to give him an award from the City of New York for his "professionalism and contribution to the city."

And in November It Changed into a Pumpkin!



House Freshmen Learning Washington's Ways

By BENJAMIN SHORE
Copley News Service
The biennial scramble has begun among just-elected new congressmen to win committee assignments which they think will enhance their political careers or give them a chance to pursue special interests.

Lesson In Faith Injured Gridder Fights Paralysis

By LARRY HARNLY
Copley News Service
It was a second-half kickoff. Wheaton College kicked off here to Millikin University on that Saturday, Oct. 7.

shall be made for proper maintenance and upkeep of the school, so children may attend without sanitary or physical hazards. No screens in one window at Croombs High School sanitary???"

Political Notebook

1974 Set for New, Needy Aged Setup

WASHINGTON (NEA) - The developing welfare reforms which affects future aid to nearly 7 million needy aged, blind and disabled, there is more than just the hope of greater efficiency.

One Man's Opinion

Study Links Poor To Schooling Lack

By RAY CROMLEY
WASHINGTON (NEA) - If we are not to see third, fourth and fifth generations of the same families on welfare, this nation had better find out what is different about poor families and how to assist and encourage them to help themselves. The record to date is not good.

BERRY'S WORLD

Yes, We Are Close To You!

Wherever you are in Seminole County, South Volusia County or North Orange County... WE ARE CLOSE TO YOU with the highest interest rate allowed!

Washington (NEA) - The developing welfare reforms which affects future aid to nearly 7 million needy aged, blind and disabled, there is more than just the hope of greater efficiency.

Washington (NEA) - If we are not to see third, fourth and fifth generations of the same families on welfare, this nation had better find out what is different about poor families and how to assist and encourage them to help themselves.

Washington (NEA) - The developing welfare reforms which affects future aid to nearly 7 million needy aged, blind and disabled, there is more than just the hope of greater efficiency.

Waldorf-Astoria

To Refund \$113,203

A new Florida state court found the Waldorf-Astoria hotel had fraudulently surcharged guests a total of \$113,203 and ordered the money paid back to those who demanded a refund.

Casselberry

Mayor—3 Candidates. No Reply.

City Council—No Reply from John F. Yamnitz, Louis Kirby or John Leighty.

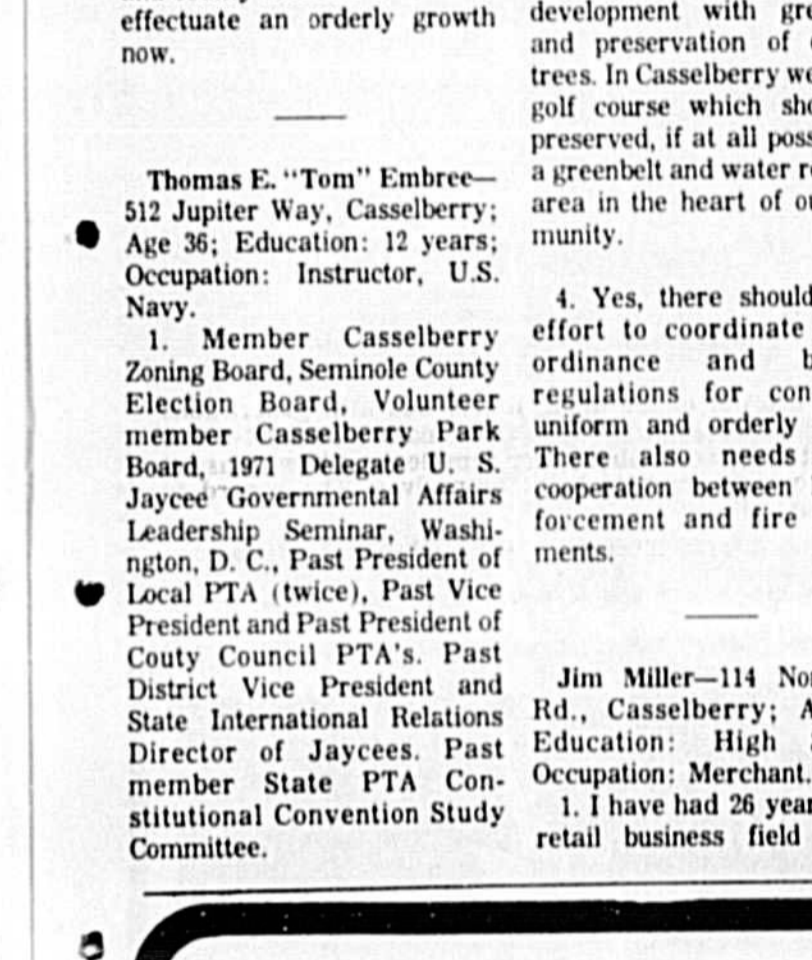
Altamonte Springs

Candidates Questions—City Council.

1. What additional training and experience have you had which would qualify you for this office?
2. What do you consider to be the most urgent need in your municipality, and how would you deal with it?

Sanford

Close To You!



'League' Questions Casselberry

Altamonte Candidates

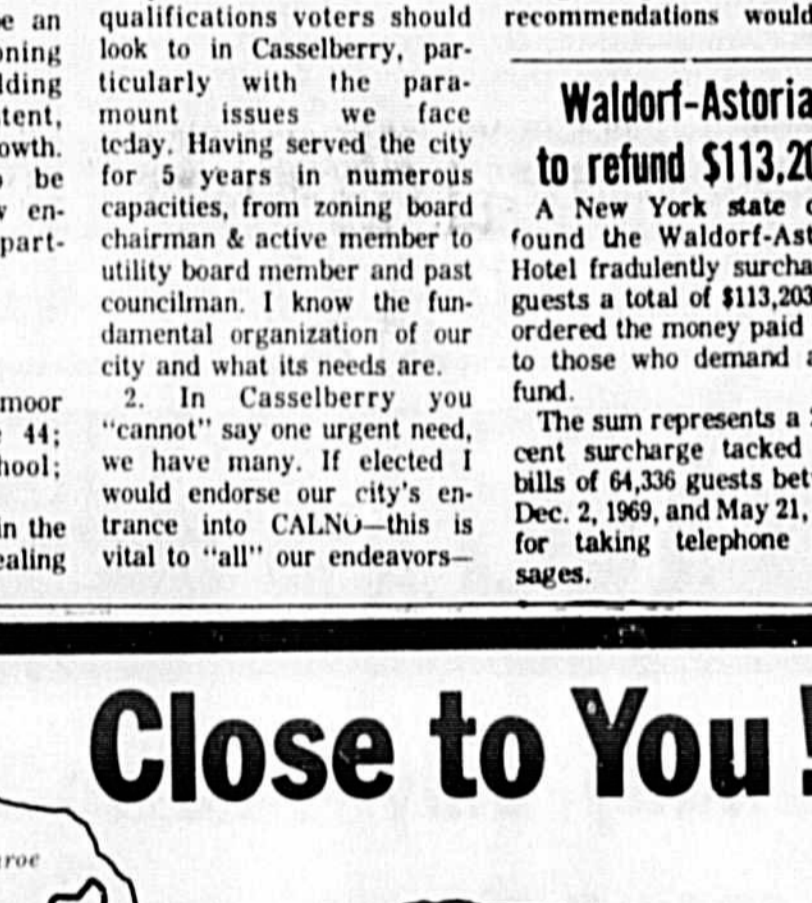
1. A social worker in both private (Alpha Boys Club) and public (State of Georgia) social service Federal funding and complying with government services was part of the program in both jobs. I have worked with regional planning councils serving as secretary for Economic Opportunity Association in northwest Georgia. Have worked on pilot project daycare centers and federal housing authority.

Do your part in shaping Sanford's future!

PLEASE VOTE ON DECEMBER 5
PD. POL. ADV. BY LEE MOORE
DEMOCRAT FOR MAYOR

George Stuart Introduces

REMINGTON ELECTRONIC CALCULATOR



Nationally Advertised at \$79.95
It's palm size. It's electronic. Comes complete with carrying case. More can use it at home by balancing the checkbook. High school and college students can use it for their homework. Do call us to figure prices or take with him in his briefcase.

For mail orders, add \$1.00 packing and shipping charges. Shipped prepaid. Florida orders, add 4% State Sales Tax.

George Stuart

REMINGTON 661

It weighs a mere 12 1/2 ounces. Carrying case with strap and batteries are included.

So, what are you waiting for? We now have the product at the price. Only 150 available. Nationally advertised is \$79.95, but George Stuart's price is only \$69.95. This is a cash and carry price, but you may use your MasterCard, BankAmericard or American Express... or buy on time (\$0 down and \$3 a month).

For mail orders, add \$1.00 packing and shipping charges. Shipped prepaid. Florida orders, add 4% State Sales Tax.

Check with **george stuart** FLORIDA'S LARGEST HOME DEPARTMENT STORE
133 East ROBINSON - ORLANDO, FLORIDA

1. A social worker in both private (Alpha Boys Club) and public (State of Georgia) social service Federal funding and complying with government services was part of the program in both jobs. I have worked with regional planning councils serving as secretary for Economic Opportunity Association in northwest Georgia. Have worked on pilot project daycare centers and federal housing authority.

CANNON MUSIC CO.
OPEN SUNDAY
1:00 to 6:00
MILTON STORE
1605 S. Hwy. 17-92
"At the Maitland Underpass"
PHONE 644-7600
CANNON MUSIC CO.

Do your part in shaping Sanford's future!
PLEASE VOTE ON DECEMBER 5
PD. POL. ADV. BY LEE MOORE
DEMOCRAT FOR MAYOR

George Stuart Introduces **REMINGTON ELECTRONIC CALCULATOR**
BRAND NEW NOW! \$69.95
Nationally Advertised at \$79.95
It's palm size. It's electronic. Comes complete with carrying case. More can use it at home by balancing the checkbook. High school and college students can use it for their homework. Do call us to figure prices or take with him in his briefcase.

What will it do? Practically anything you need it to do. Adds, subtracts, multiplies, divides. Does chain multiplication. Even adds and subtracts in the same problem!

It has a large, bright, 6-column display but with the flip of a button, gives you a 12-digit answer if needed.

It weighs a mere 12 1/2 ounces. Carrying case with strap and batteries are included.

So, what are you waiting for? We now have the product at the price. Only 150 available. Nationally advertised is \$79.95, but George Stuart's price is only \$69.95. This is a cash and carry price, but you may use your MasterCard, BankAmericard or American Express... or buy on time (\$0 down and \$3 a month).

For mail orders, add \$1.00 packing and shipping charges. Shipped prepaid. Florida orders, add 4% State Sales Tax.

Editorial Comment

Controversial Comments On Education

It was once written "the hottest places in hell are reserved for those who, in times of moral crisis maintain their neutrality." And so, we again comment upon the controversial subject of local education.

We commend the League of Women Voters who recently endorsed a program offering a positive alternative to school expulsion which we have never felt to be an ultimate solution.

Also, we applaud Seminole High School for the change from academic to a vocational program for those students not inclined toward college pursuit.

One esteemed local businessman wrote to the late Staff Derby "in most vocations you have to earn the right to continued employment by improving performance, not just 'hang in there' year after year."

It is interesting to note that this professional educational group will resist change "after all," he said, it is not easy to change.

Also, we applaud Seminole High School for the change from academic to a vocational program for those students not inclined toward college pursuit.

It is interesting to note that this professional educational group will resist change "after all," he said, it is not easy to change.

change one's thinking after a half century of standpointism. And yet with this in mind this reporter has received criticism for exposing the fact that no English books are in use in a class at Crooms High School although Florida state statute 238.43 states that it is the duty and responsibility of each superintendent for requisition of textbooks to transmit before June 20 of each school year to the Department of Education for additional books needed for the following school year.

Neil Simon The Man Who Saved Broadway

Neil Simon, surrounded by friends and admirers, well-wishers and just plain onlookers, kept smiling, his pleasant, Lower Eastside ice cream vendor's smile.

Neil Simon, surrounded by friends and admirers, well-wishers and just plain onlookers, kept smiling, his pleasant, Lower Eastside ice cream vendor's smile.

Neil Simon, surrounded by friends and admirers, well-wishers and just plain onlookers, kept smiling, his pleasant, Lower Eastside ice cream vendor's smile.

Neil Simon, surrounded by friends and admirers, well-wishers and just plain onlookers, kept smiling, his pleasant, Lower Eastside ice cream vendor's smile.

Neil Simon, surrounded by friends and admirers, well-wishers and just plain onlookers, kept smiling, his pleasant, Lower Eastside ice cream vendor's smile.

Neil Simon, surrounded by friends and admirers, well-wishers and just plain onlookers, kept smiling, his pleasant, Lower Eastside ice cream vendor's smile.

Political Notebook 1974 Set for New, Needy Aged Setup

The developing welfare reform which affects future aid to nearly five million needy aged, blind and disabled, is more than just the hope of greater efficiency.

The prospective administrators of the new program, the Social Security Administration, have furthermore, a reputation for trying diligently to ferret out people entitled to any new kind of level of benefit.

As President Nixon reminded in approving reform of welfare's adult categories, under present state-county administration many of the affected aid recipients are subjected to inequities and red tape (others would add indignities) which federal control is intended to eliminate.

As President Nixon reminded in approving reform of welfare's adult categories, under present state-county administration many of the affected aid recipients are subjected to inequities and red tape (others would add indignities) which federal control is intended to eliminate.

As President Nixon reminded in approving reform of welfare's adult categories, under present state-county administration many of the affected aid recipients are subjected to inequities and red tape (others would add indignities) which federal control is intended to eliminate.

'League' Questions Casselberry, Altamonte Candidates

CASSELBERRY Candidates Questionnaire - City Council

Questions: 1. What additional training and experience have you had which would qualify you for this office?

1. I would have to study the whole water basin to give you any kind of answer on this problem.

1. I would have to study the whole water basin to give you any kind of answer on this problem.

1. I would have to study the whole water basin to give you any kind of answer on this problem.

1. I would have to study the whole water basin to give you any kind of answer on this problem.

DISTRICT 3

Leo R. Ware - 502 East St., Altamonte Springs; High School Education.

Donald C. Myers - 110 Burke St., Altamonte Springs; Age 47; High School education; Accountant.

City Council - No reply from: John F. Yarnitz, Louis Kirby or John Leighty.

City Council - No reply from: John F. Yarnitz, Louis Kirby or John Leighty.

City Council - No reply from: John F. Yarnitz, Louis Kirby or John Leighty.

DISTRICT 4

Sandra A. Glenn - 206 Woodling Place, Altamonte Springs; Age 34; College; Major, Accounting, Business Administration, Middle Georgia College, Valdosta State, University of Chattanooga.

Sandra A. Glenn - 206 Woodling Place, Altamonte Springs; Age 34; College; Major, Accounting, Business Administration, Middle Georgia College, Valdosta State, University of Chattanooga.

Sandra A. Glenn - 206 Woodling Place, Altamonte Springs; Age 34; College; Major, Accounting, Business Administration, Middle Georgia College, Valdosta State, University of Chattanooga.

Sandra A. Glenn - 206 Woodling Place, Altamonte Springs; Age 34; College; Major, Accounting, Business Administration, Middle Georgia College, Valdosta State, University of Chattanooga.

Sandra A. Glenn - 206 Woodling Place, Altamonte Springs; Age 34; College; Major, Accounting, Business Administration, Middle Georgia College, Valdosta State, University of Chattanooga.

resolutions. 1. Absolutely. The need for coordination was established by Altamonte Springs, Longwood, Winter Springs and is called C.A.L.N.O. This council was chartered to enable local governments at all levels to participate county and municipal. C.A.L.N.O. receives state and federal funds for planning studies encompassing land use, zoning, police, fire, sewer, and recreation in these growth areas.

A comprehensive land use plan and zoning ordinance as Altamonte Springs is completing will guide municipal government in bringing order to the growth of the city.

Mean flood plains will be established for these areas below which no construction or dredging will be allowed.

Mean flood plains will be established for these areas below which no construction or dredging will be allowed.

Mean flood plains will be established for these areas below which no construction or dredging will be allowed.

The Sanford Herald

TELEPHONE 831-9932 300 N. FRENCH AVE., SANFORD, FLA. 32771

WALTER A. GIELOW Editor and Publisher. FRANK VOLTOLINE Circulation General Manager. JOHN A. SPOLSKI Associate Editor.

GARY TAYLOR Sports Editor. ROY GREEN Advertising Manager. JANE CASSELBERRY County Editor.

And in November It Changed into a Pumpkin!



York decided to give him an award. "Since I've written so many comedies that depict New York as about as pleasant a place to be as Guadalcanal," Simon said, "this award is really good sport."

York decided to give him an award. "Since I've written so many comedies that depict New York as about as pleasant a place to be as Guadalcanal," Simon said, "this award is really good sport."

One Man's Opinion Study Links Poor To Schooling Lack

WASHINGTON (NEA) - A study by the U.S. Labor Department and carried out by Ohio State University to determine the characteristics of potential recipients of family assistance payments.

WASHINGTON (NEA) - A study by the U.S. Labor Department and carried out by Ohio State University to determine the characteristics of potential recipients of family assistance payments.

WASHINGTON (NEA) - A study by the U.S. Labor Department and carried out by Ohio State University to determine the characteristics of potential recipients of family assistance payments.

Close to You!

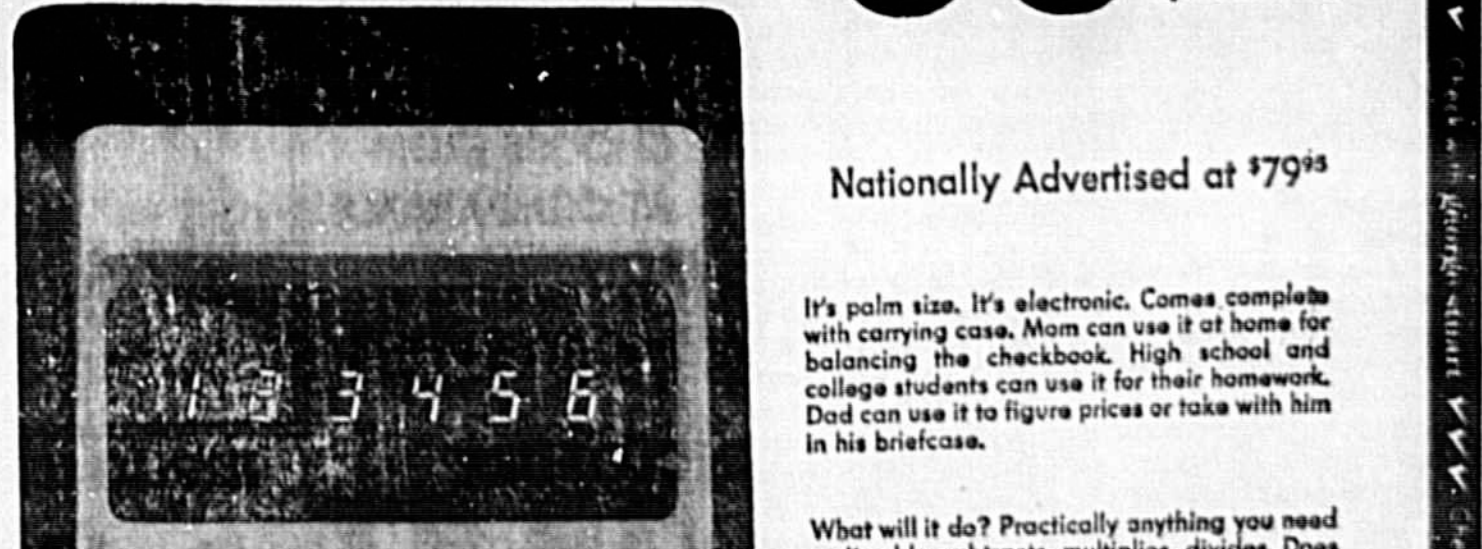


Yes, We Are Close To You! Wherever you are in Seminole County, South Volusia County or North Orange County... WE ARE CLOSE TO YOU with the highest interest rate allowed!

first federal savings & loan association of seminole county

George Stuart Introduces REMINGTON ELECTRONIC CALCULATOR

BRAND NEW NOW! \$69.95



It's palm size. It's electronic. Comes complete with carrying case. More can use it at home for balancing the checkbook.

It weighs a mere 12 1/2 ounces. Carrying case with strap and batteries are included.

Herald Area Correspondents: Altamonte Springs Marilyn Gordon 831-4975, Fern Park - E. Estates Goldenrod-Eastbrook Marilyn Gordon 831-4975.

Lesson In Faith Injured Gridder Fights Paralysis: I wasn't in pain. But it was real difficult to breathe. Way was speaking three weeks later as he traveled to the airport.

BERRY'S WORLD: Six days after the injury Way was removed from the critical list. "He made a tape at the time," Mrs. Way recalled, "and sent it to the team."

George Stuart Introduces REMINGTON ELECTRONIC CALCULATOR. BRAND NEW NOW! \$69.95. George Stuart's Special Price.

George Stuart Introduces REMINGTON ELECTRONIC CALCULATOR. BRAND NEW NOW! \$69.95. George Stuart's Special Price.

Hunter Loses Shirt Tail Sanford Policeman Gets His Buck

By BOB ORRELL
Herald Outdoor Editor

POT SHOTS

Some deer hunters are putting meat in the freezer but one unlucky one lost his shirt tail this week.

Bobby Johnson, hunting with friends at Johnson's Ranch, missed his shot at a nice four point buck and according to custom, his friends ("cut his shirt tail off") cut his shirt tail off. Another member of the party Sergeant Gene Pharris, Sanford Policeman, did not miss and bagged the elusive deer.

The Farrington section produced two deer for Danny Tillis and Don Gorman Saturday. Hunting out of the same camp, the men made their kills almost simultaneously, Tillis dropping a six pointer, Gorman a three point buck.

Duck hunters came in with a few good reports in spite of the drizzly skies, several limits being bagged over last week.

Among them were "Big" Shelley and son, who did their shooting in Lake Jessup.

A good question was posed to this writer concerning why the increased cost for a duck stamp. Last year, \$5 bought the required Federal Waterfowl Stamp; this year a 5 dollar bill is the fee.

Add the regular \$7.50 hunting license to that and a would be duck hunter has spent \$12.50 in fees before firing a shot. And a shot could possibly be all he gets, for with a new point system, he could fill his bag limit for the day. After talking with several hunters in the Plaza Sports Shop, the reason for this increased fee is still a mystery, but the arguments brought out by the questioner were long and loud.

Over on the west side of town, George Cheney, at Wekiva River Haven Camp told of another four point buck killed on Thanksgiving Day in the Blackwater area.

Cheney also had a good tale about four visitors from Fort Myers spotting a MONKEY

while hunting down river from his place. George asked what brand of snake bit medicine they were drinking but was assured that all were cold sober when they spotted the creature. Could it be possible that some of the monkey colony from Silver Springs has migrated this far south?

SALT WATER SCENE

Jim Shupe and his brother Bob fished the Jacksonville Beach area last week during the cool snap and were rewarded with a fabulous catch of snook.

For snook to be that far north is unusual, but Shupe mentioned that their angling was done in a backwater area where

the water is warmed by the discharge from a power plant. Not only did they get their two day limit of limesides, but Jim also landed a pair of tarpon of about 25 pounds each.

Trawl fishermen on the East coast are hitting the jackpot in the vicinity of Al-Jo's Camp. Plug casters using Mirrolures are finding fish in the deep holes in large quantities, the TT-23 model seemingly the most productive.

A trio composed of Jerry Kirkman, his father, who was visiting from Georgia, and this writer brought back 35 last week on a short afternoon trip all caught on the TT 23 mirrolure.

Live bait is also taking

and the catfish were still biting. Otis Faulk, Camp Owner, is planning a fishing contest in the near future and more will be told on this when plans are complete.

Seven small bass was the best report from Wekiva River Haven for the past few days, but as George Cheney, camp proprietor stated, "Very few people were willing to get wet trying to fool a fish."

On the East side of town, Paul Johnson of Osteen Bridge Fish Camp, had no bass fishermen out, but those after speckled perch were taking up to 25 per

Reports here were also on the brief side, what with rainy days and hunting season in full swing.

Camp Seminole on the Wekiva called to say that in spite of wet weather, John Hill managed to land one nice bass

Most of the catches came from Lake Monroe, drifting with live Missouri minnows in deep water, with a few bank fishermen trying their luck around the bridge pilings.

Lake Jessup bass showed signs of life—three of them being landed by one man near the mouth of Howell Creek close to Hiley's Camp.

Hiley also told of a nice catch of catfish by William Morgan and wife, Dorothy, while fishing off the pier in front of the camp. Speck anglers brought in strings of 8 to 20, the best spot being around Cabbage Point—LET'S GO FISHING!

FRESH WATER REPORTS

Orlando-Seminole Jai Alai

MONDAY MATINEE
FIRST GAME—Seven Points—1. Angel Tami, 4. Liza Batista, 5. Sela Yza, 6. Rene Bengoa, 7. Ferrin Jose, 8. Ibarra Pedrosa.
SECOND GAME—Double—Seven Points—1. Angel Tami, 4. Sela Yza, 5. Ibarra Bengoa, 6. Ferrin Jose, 7. Bayo Gando, 8. Liza Batista, 9. Pedrosa.
THIRD GAME—Double—Seven Points—1. Angel Tami, 4. Sela Yza, 5. Ibarra Bengoa, 6. Ferrin Jose, 7. Bayo Gando, 8. Liza Batista, 9. Pedrosa.
FOURTH GAME—Double—Seven Points—1. Angel Tami, 4. Sela Yza, 5. Ibarra Bengoa, 6. Ferrin Jose, 7. Bayo Gando, 8. Liza Batista, 9. Pedrosa.
FIFTH GAME—Double—Five Points—1. Angel Tami, 2. Arto Zarte, 3. Equia Mujuzeta, 4. Manolo Juan, 5. Manolo Garcia.
SIXTH GAME—Double—Five Points—1. Pena Jose, 2. Bayo Mancha, 3. Manolo Mujuzeta, 4. Quinto Gando, 5. Sela Agustin, 6. Azca Caballero, 7. Altuna Luis, 8. Julio Laca.
SEVENTH GAME—Double—Five Points—1. Aneli Yza, 2. Arto Jose, 3. Ibarra Zarte, 4. Erdoza Mancha, 5. Sela Pedrosa, 6. Liza Luis, 7. Manolo Bengoa, 8. Azca Toni.
EIGHTH GAME—Double—Five Points—1. Pena Jose, 2. Bayo Mancha, 3. Manolo Mujuzeta, 4. Arto Jose, 5. Sela Agustin, 6. Azca Caballero, 7. Altuna Luis, 8. Julio Laca.
NINTH GAME—Singles—Seven Points—1. Arto, 2. Julio, 3. Gasto, 4. Agustin, 5. Mujuzeta, 6. Manolo, 7. Juan, 8. Garba.
TENTH GAME—Double—Seven Points—1. Rene Batista, 2. Manolo Gando, 3. Azca Mancha, 4. Julio

FINLEY TO STAY OAKLAND (AP)—Charlie Finley says he's made money with his Oakland A's ever since he moved there from Kansas City for the 1968 season.

Before the World Series began he talked of getting out of sports, but after his underdog Athletics beat the Cincinnati Reds in the seven-game series, Finley changed his mind. He said he won't move the team from Oakland to New Orleans where a new stadium awaits a major league franchise.

SHOP NOW... SAVE TIME AND MONEY!
We Have A Large Stock of Guns, Camping Equipment, Fishing Tackle. Come In And Buy Trade Or Layaway Your Choice Of Gifts For CHRISTMAS!
We Do Gun & Tackle Repair
1120 STATE ST.
OPEN DAILY 9:00 FRIDAY 9:00
The Sports Shop

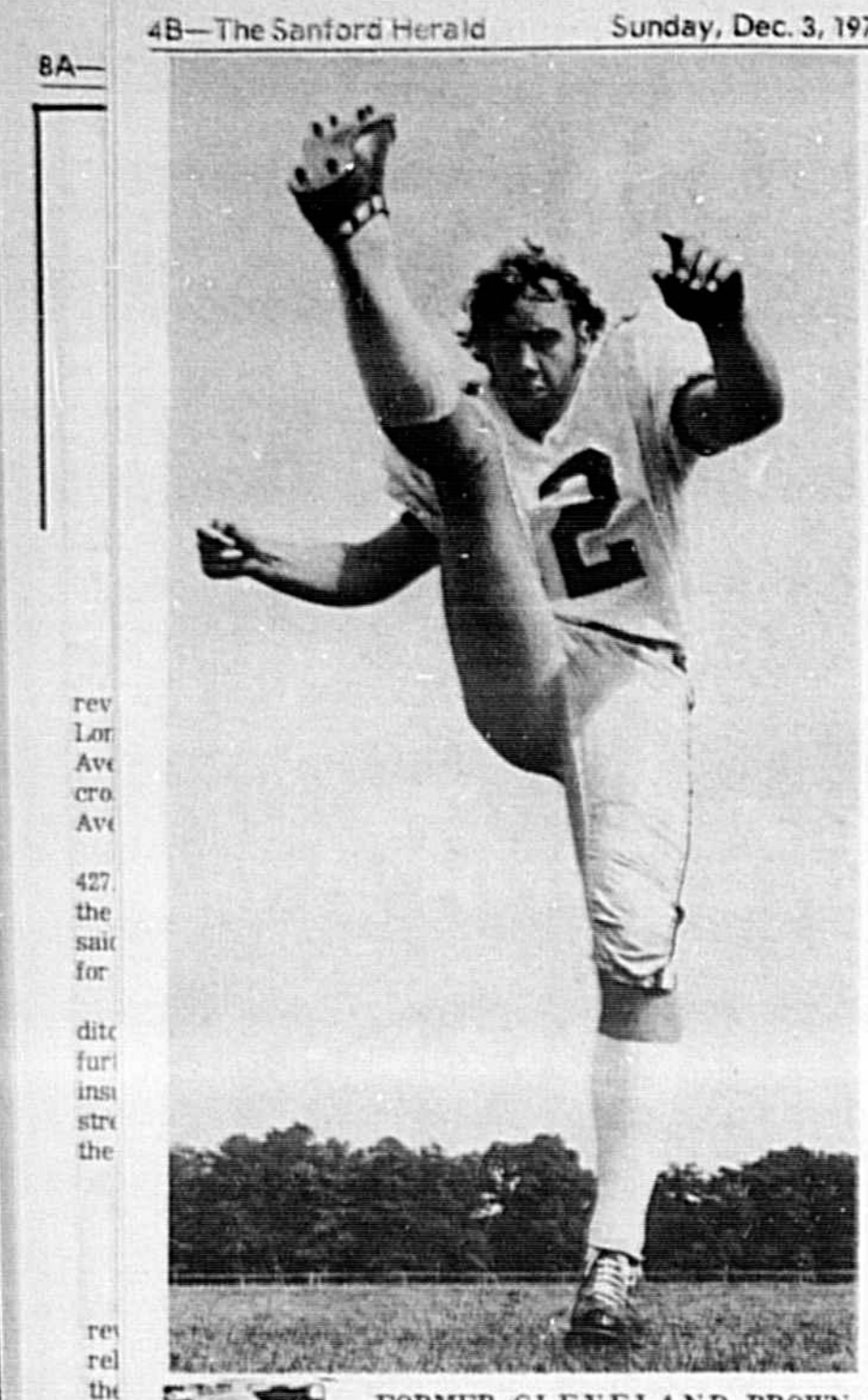
OPEN SUNDAY 12:30-5:30 Belted polyester. Special 21⁸⁸

plus 1.78 fed. tax and old tire
B-78-13 (ASO-13) whitewall tubeless
Ground Gainer Belted. A great 2-4 belted tire with polyester cord. Whitewall only.
Tire size Special Plus fed. tax
E78-14 (735-14) 25.88 2.34
F78-14 (775-14) 26.88 2.52
G78-14 (825-14) 27.88 2.69
H78-15 (825-15) 28.88 2.78
I78-15 (855-15) 29.88 3.01

Sale! 21⁵⁶ Reg. 26.95
with exchange
Survivor 48 - the 12 volt battery for the on-the-go motorist. Just look at our guarantee! Polypropylene plastic case in group sizes, 24, 27, 27F, 22F, and 24F to fit most American cars.

Sale! 25⁵⁶
Survivor 60, Reg. 31⁵⁶
Golden Pinto Mini-bike. 150⁵⁶
Golden Pinto Mini Bike" 4 cycle, 3 1/2 HP engine capable of speeds to 23 mph. Has hand brake plus scrub brake, recoil starter, handcontrolled throttle and centrifugal automatic clutch.
Mini bikes are not intended for racing or for use on highways, sidewalks or streets.

8 track tape deck. Special 79⁹⁹
8 track tape deck with FM stereo radio
Includes 4 hang-on speakers
Separate volume and tone controls
Lighted FM tuning dial and channel indicators
Automatic Frequency Control (A.F.C.) to prevent drift of FM station
JCPenney The Christmas Place.
Charge it at Sanford Plaza Penney's: Open 8a.m. til 10 p.m. Mon. thru Sat.



FORMER CLEVELAND BROWN mainstay Lou Groza, left, gets his kicks these days from watching his son Jeff, boot field goals for Ashland (Ohio) College. Groza also has a son who is a place-kicker on a high school team.

Groza Family Gets Its Kicks From Gridiron

By JOAN RYAN

WASHINGTON (NEA)—There is a powerful temptation for the son of a successful man to check it all, tuck a daisy behind one ear and let life roll right on by. It's the safe and simple way of avoiding the odious comparison between son and sire.

But Lou Groza's son Jeff is not one to take the simple way out. A sophomore at Ashland College in Ohio, Jeff Groza has stepped into the outsize cleated shoes vacated by his father, who retired after 17 productive seasons kicking field goals for the Cleveland Browns.

Early indications are that young Jeff might end up erasing some of the NFL records for place kicking that his dad now holds.

Lou Groza I must point out, is quite an act to follow. It is rumored that he invented the field goal. Certainly, he wasn't nicknamed "The Toe" for his interest in ballet. More likely, it was because he was the first kicker who guaranteed the offense at least three points if they could move the ball across their opponents' 40 yard line.

With Jeff Groza promising similar productivity, the Grozas, Lou and Jackie, attend all of Ashland College's games.

Jackie, blonde and pink-skinned as a Renour nude, yells and screams excitedly while her husband sits with dark Indian chief passivity.

"I'm more nervous now," Lou confessed, "than when I had to kick. I'm pulling so hard for him, Jackie gets all tensed up. She says she can't look when Jeff's got a big one. I never sit with her at a game before because I was always playing and I'll tell you she's a nervous wreck."

Jackie defended herself nicely. "It is so much harder to watch your son play than your husband. I don't know why I just know how much he wants to do well, and he's so young. I just sit and hold my breath on every play."

The family drama in the stands doesn't bother Jeff Groza. He has an impressive 75 per cent kicking record that has belted Ashland College into a top 10 ranking among small colleges.

The Grozas are justifiably proud of him. Jackie bubbles with motherly exuberance when someone asks how Jeff's doing. "I just can't wait to tell them he's gotten more points than any kicker in Ohio," she says. "I just brag about him but if somebody asks Lou, he won't say too about him. He just says, 'Jeff's going to do all right.'"

Beach Road Closure Meeting Is Scheduled

All persons interested in seeing AIA reopened to vehicular traffic are invited to attend a meeting at the Wildlife Refuge Office in Titusville, Dec. 8 at 8 p.m.

Here Is Your Chance To Attend The DAYTONA 500 FEB. 18, 1972
Round Trip From Deltona Via Motor Coach
PRIME GRAND STAND SEATS
BOX LUNCH
All for only \$1800 Per Person
★ A Great Christmas Gift ★
Deltona
TRAVEL AGENCY
Phone 668-4419
for information and reservations

Around Seminole..... Moods And Modes

WEDDING REFLECTIONS
The mood is marriage...
Modes are wedding gowns...
Lifestyle is happiness!

She's A Bride

Miss Dale Laspee, daughter of the late Mr. and Mrs. Frank Laspee, became the bride of Clyde L. Cline, son of Mr. and Mrs. Clyde E. Cline, of Sanford, Nov. 18, 1972 at 2 p. m. in First United Methodist Church, Sanford.

The Rev. T. C. Osteen was officiating clergyman at the ceremony. John Charles Aiken, organist, presented an appropriate musical program including the wedding marches.

Given in marriage by her brother, Frank Laspee Jr., of Mantua, N. J. the bride wore a formal length gown of silk organza and lace. The bodice featured re-embroidered lace sleeves trimmed with silk organza. The silk organza skirt was trimmed with daisies re-embroidered lace roses and daisy lace at the hem and on the train.

Her shoulder length veil of silk illusion fell from a headpiece of seven satin roses and she carried a cascade bouquet of pastel yellow roses and greenery.

Mrs. Carol Laspee, Mantua, N. J., was matron of honor. She wore a formal-length gown of velvet and chiffon. The bodice and long sleeves were of embroidered purple velvet featuring a high neck and the skirt was lavender chiffon. She carried a bouquet of white carnations tinted purple.

Frank D. Tatum, Lake Mary, was best man. Viola Laspee, Sanford, aunt of the bride, wore an aqua short sleeve knit jacket and sleeveless dress ensemble and a blue and white carnation corsage.

The groom's mother chose a pastel blue sleeveless dress with matching long sleeve lace coat and a blue tinted carnation corsage.

Following the ceremony a reception was held at the home of the groom's parents. Guests were served a buffet of ham, roast beef, potato salad, baked beans, cake and punch. Ellie Beth Thompson, Orlando, cousin of the bride cut and served the cake.

The couple left for a wedding trip to Sanibel Island and their new residence is on Brisson Ave., Sanford. The groom is employed by Chase and Co., of Sanford.

Out-of-town guests came from New Mexico, New Jersey and West Virginia.

MRS. CLYDE L. CLINE
...nee Dale Laspee
(Bob Orwig Photo)

She's Engaged

Mr. and Mrs. C. O. Todd, 337 French Ave., Sanford, are announcing the engagement and forthcoming marriage of the daughter, Miss Bonnie S. Todd, to Richard Porter Bryan, son of Mrs. Barbara Bryan, Orlando, and Oscar Bryan, Winter Garden.

Born in Henderson, Ky., the bride-elect is the granddaughter of Mr. and Mrs. W. W. White, West Palm Beach, and Mrs. G. West and the late John M. Todd, Henderson.

A 1966 graduate of Seminole High School, Miss Todd is also a 1969 graduate of Seminole Junior College.

She attended Auburn University and will continue studies at Florida Technological University in



Silver Wedding Anniversary

MR. AND MRS. CLYDE S. MUSE on their silver wedding anniversary (Related story inside)



60th Wedding Anniversary

MR. AND MRS. CHARLES McWILLIAMS celebrated their 60th wedding anniversary, Saturday, Dec. 2. Their home is in Canton, Ohio but they have been spending the winters in Sanford for the past 25 years. They are residing with their daughter, Mrs. Ray Walker, at her home, 234 Oak Ave. and also visit a niece, Mrs. Edna Brinson, 1422 Park Ave. They have 10 children, 12 grandchildren and due to their advanced ages (94 and 83 years) are not very active but still like to fish when the weather permits. No formal celebration is planned. (Staff Photo)



Happiness Is A Pre-Nuptial Party

REAL LIVE BRIDE DOLLS are making the December wedding scene. Carol Fugate, hostess, from left, petite Kimberly Fugate, Miss Patricia Mary Rice, bride-elect and her mother, Mrs. L. R. Rice, are in the limelight at a bridal shower honoring Pat. The pretty bride-elect and John Robert Ek will be altar-bound Dec. 16, at 6 p. m., at First Presbyterian Church, Sanford. (Staff Photo)

Off To Mexico . . . Marilyn's Merrily-Go-Round



By MARILYN GORDON

I went on a safari, SKY SAFARI TRIP IS Sky Safari is Central Florida's Air Travel Club. We left Wednesday for Mexico City returning Sunday night. Mexico is a country of contrasts. It is a tourist's paradise. I visited the Shrine of the Lady Guadalupe. Tradition links the origin of the shrine with an Indian peasant's vision of the Virgin Mary in the early days of Spanish rule. The poor people travel from all over Mexico to visit the shrine and the last mile they go on their knees. I was told that it is the wish of every Roman Catholic to visit it at least once. Within 16 years of the vision, so historians claim, nine million Indians embraced Christianity. A mere 30 miles from Mexico City is one of the largest archaeological sites. It is where the pyramids of the Sun and the Moon are. I did not climb them because of lack of time, but did want to. Taxco is a must. It is the largest city of Mexico. There are over 70 shops. The richest part of the trip though was the crowd we traveled with. When we were ready for company someone was always there. When you wanted to explore on your own that was fine, too. Someday maybe I will be able to return. Until then, see you around and about Seminole County.

Sanford Circles Garden Club Calendar

Sanford Garden Club Circles will meet for the month of December as follows:
CAMELLIA: Friday, Dec. 8, 9:30 a.m., at the home of Mrs. Robert Sym, 196 Toll Gate Trail, Longwood. Program, Christmas ideas and gift exchange.
CENTRAL: Thursday, Dec. 14, 10:30 a.m., at the Garden Center. Program, Christmas in Song by Mrs. G. B. Drake. Members will bring gifts suitable for patients in Melvilleville Nursing Home. Hostesses, Mrs. B. C. Moore and Mrs. R. D. Wesley.
HIBISCUS: Friday, Dec. 8, 1 p.m., at the home of Mrs. T. A. Burleigh, 1513 Palmetto Ave. Co-hostesses, Mrs. D. M. Paul and Mrs. J. B. Williams. Program, Christmas party.
JACARAMBA: Friday, Dec. 8, 7 p.m., Program: TBA Christmas dinner and gift exchange. Hostesses, Mrs. C. A. Anderson Jr. and Mrs. H.E. McSwain.
MAGNOLIA: Thursday, Dec. 7, 9:30 a.m., at the home of Mrs. V. M. Smith, Geneva. Co-hostess, Mrs. Edward C. Putnam. Program, covered-dish luncheon. Gift Exchange.
MEMOSA: Thursday, Dec. 14, 9:45 a.m., at the home of Mrs. W. B. Moye, 232 West 17th St. Program, Christmas party.
PALM: Thursday, Dec. 7, 1:30 p.m., at the home of Mrs. Escar Neider. Co-hostesses, Mrs. Gertrude Gilbert. Program TBA.
ROSE: Thursday, Dec. 9, 9:45 a.m., at the home of Mrs. Charles Wilke, 420 So. Sumnerln. Co-hostess, Mrs. F. T. Meriwether.

Geneva Gems

Lamar Deese and his children. Also visiting with the Deeses were friends, Mrs. C. A. Dickson and Mrs. Penicue Wester from Cypress. The Deese sons are from Tallahassee.



By LIZ MATHEUX

Recent guests at the home of Mr. and Mrs. T. Meade Baker at their lovely Buck Lake home were Mrs. Baker's aunt, Mrs. Henry Parramore, and her friend Mrs. Screven Bond of Jacksonville. While chatting with Mrs. Baker she told me that she and Meade were going to try to do better by their Geneva neighbors and spend more time here after the Christmas holidays. My Joe's brother, Orie, took us to the Gospel Sing the other night at the Civic Center and let me tell you that it was one of the most marvelous experiences I have ever had. Believe me, there was just about standing room only. Never have I ever seen more people congregated for a gospel singing anywhere. See I been telling you that Sanford was a great place to live. While there I saw Mrs. Katherine Ward and her friends, Mr. and Mrs. Frank Godwin and we renewed old times. I also saw Mrs. Bill Gailey who looked as if she had just stepped from the pages of a fashion magazine. Guess I just like going to such friendly gatherings because I get to see so many of the people I have known for so long. Before we leave this subject, let me tell you that the Florida Boys were more than grand but that Sanford's own "Lighthouse Quartet" surely does not have to ever take a back seat to anyone . . . they were more than grand. It was also good to see Elaine Drake and Shirley Ryan and to hear them blend their beautiful voices. Goah, they did a good job. Guests at the home of the Rev. and Mrs. Marvin Deese were their sons and daughters-in-law, Rodney and Sue Deese, Duke and Gail Deese and

Thanksgiving dinner with Volie and Connie Williams and their children and Volie's mother, Mrs. Elizabeth Williams. We ate too much and we had a grand time talking about lots of things. Then we came home to Thanksgiving supper with Oliver and his Elizabeth and we were joined by Oliver's sister and her husband, Robert and Mildred Geiger and their daughters, Margorie and Carolyn. Orie was there too or it would not have been a real family gathering. Had to chuckle when Liz told me about her recent trip to Seminole Memorial and on her behalf, she and I wish to thank all of my friends who sent her cards thinking it was I who was in the hospital. Yes, it is real good to be liked and I thank you one and all!

Week of December 4, 1972
An area east of Park Avenue, bounded on the north by 13th Street and Celery Avenue and on the south by 25th Street and extending to the east city limits line.

Week of December 11, 1972
An area west of Park Avenue, bounded on the north by West 13th Street and Mc Cracken Road and on the south by West 25th Street and extending to the west city limits line.

Week of December 18, 1972
An area west of Park Avenue, between West 13th Street and all the way to Lake Monroe and extending to the west city limits line of Persimmon Avenue.

Week of December 25, 1972
An area east of Park Avenue and north of East 13th Street and Celery Avenue and all the way to Lake Monroe and extending to the east city limits line.

RE-ELECT GORDON MEYER CITY COMMISSIONER GROUP 2



He supported:

1. Property tax reduction—7½ mills in three years.
2. Better Police and Fire Protection
A. New Police complex being built — and enlarged police force to protect citizens and property.
3. Stricter zoning requirements to protect property values.
4. Requiring developers to pay for water and sewer expansion costs rather than charging present residents.
5. Enlarging Sewer plant to reduce pollution.
6. Installation of traffic lights at several dangerous intersections.
7. Establishing Airport Authority Act providing for operation of Sanford Airport without cost to city taxpayers.
8. Zoo — as chairman of Zoo Committee — helped establish Seminole Zoological Society for the preservation of the Zoo for the benefit of children.

RE-ELECT Gordon Meyer The People's Commissioner

December 5 — Sanford Civic Center
Pd. Pol. Adv. by Wayne Albert, Camp. Treas.

CITY-WIDE CLEANUP Free City Pickup!

City of Sanford crews will provide a free pickup throughout the city of any large refuse items placed at the curbside or alley line. This includes old stoves, refrigerators, mattresses, limbs, and similar bulky items. Following is a description of the areas to be picked up with a week given to work in each area:

Week of December 4, 1972
An area east of Park Avenue, bounded on the north by 13th Street and Celery Avenue and on the south by 25th Street and extending to the east city limits line.

Week of December 11, 1972
An area west of Park Avenue, bounded on the north by West 13th Street and Mc Cracken Road and on the south by West 25th Street and extending to the west city limits line.

Week of December 18, 1972
An area west of Park Avenue, between West 13th Street and all the way to Lake Monroe and extending to the west city limits line of Persimmon Avenue.

Week of December 25, 1972
An area east of Park Avenue and north of East 13th Street and Celery Avenue and all the way to Lake Monroe and extending to the east city limits line.

The Herald Lifestyles

Real Estate • Gardening • Decorating
Sunday, December 3, 1972 Page 1D

House Buyer Should Check Or Beware

By JULIAN STENSTROM
This is a tale of two families who not long ago bought homes in the Sanford area. In both cases the names have been changed to protect everybody concerned. True, you won't find these two tales to be the most dramatic articles in this edition of The Herald. But there's a lesson in this pair of yarns that could save you a lot of headaches and quite a bit of money. A few evenings ago Mr. and Mrs. Paul Purchaser, who last summer bought a brand new three and two with central heat and air out in Suburbanville noticed that the temperature was falling. "Well," said Paul to his wife, "I guess it's about time for us to see if the heating system will operate as it's supposed to do." So Paul moved the switch on his thermostat control from cool to heat and adjusted the temperature setting to desired degree of warmth. A few minutes later Mr. Purchaser discovered that the system did not go on as it was supposed to do and no heat was being produced. So Paul told the Misses to call Mr. Builder the following morning and report it. Mrs. Purchaser made the call and Mr. Builder told her he would arrange for the heating and air conditioning contractor who installed the unit to check it out and get it running in accordance with the warranty. The contractor came out and accomplished the task and the Purchasers had all the heat they need. All it took was a phone call. Under the warranty there was no charge for the service. The same evening Mr. and Mrs. Bill Buyer also noticed the temperature around Sanford was falling. The Buyers had only recently purchased their 12-year old home in Camelia Court. It also was a three and two with central heat. "Well," said Bill to his wife, "I guess it's about time for us to see if the heating system will operate as it's supposed to do." So Bill moved the switch on his thermostat control from cool to heat and adjusted the temperature setting to the desired degree of warmth. A few minutes later Bill noticed that the system did not go on as it was supposed to do and no heat was being produced. Bill not only pushed all the buttons he can find, he also pushed the panic button. But there was nothing he can do. At breakfast the following morning he suddenly remembered that when he was being shown the house by Mr. and Mrs. Sam Seller he asked the sellers if all the appliances were in good working condition. And he recalled that the Sellers had told him, "Oh, yes, everything is in good working order." A few minutes later the maid arrived. When the Sellers moved from the house they moved to another city, the Buyers retained the same maid who worked several years for the Sellers. The maid overheard Mr. and Mrs. Buyer at the breakfast table discussing the heating system problem. "All I can say is that the heating system broke down last winter and since Mr. and Mrs. Seller had put the house up for sale, the maid announced, "they didn't have it fixed!" Mr. Buyer grabbed the telephone directory and called a local heating and air conditioning contractor. Compressor Is Shot
On the way to his shop the contractor stopped at the Buyer's residence. An inspection of the system revealed that the compressor was practically shot and that the reverse cycle system was completely gone. "How much," asked Bill, "will it cost to fix it?" "Offhand," the contractor replied, "I'd guess about \$825." With dollar signs blurring his vision Buyer was hardly able to look up the phone number of a friend of his he'd recently met and goggled with at the Country Club. After relating the story to the broker, Buyer asked, "What recourse do I have?" "You could go to court, Bill," the broker announced, "that's about all you can do if the Sellers won't have it repaired." He asked, "Bill, it stipulated in your contract to purchase the house that the appliances would be in good working condition." "No," answer Bill, "it wasn't." "Did you and your wife have the appliance checked out before closing," the broker inquired? "No," said Bill, "they said everything was in good working condition and we took their word for it. It was just this morning we found out that the compressor was almost shot and that the heating mechanism was gone, and that it went out last winter." "I'm afraid," the broker stated, "you'll have to have it repaired and you're going to have to pick up the tab."

Let's See If It Works

Take A Look For Yourself

Dozens of homes in Sanford and Seminole County change ownership every week. Just turn to the report on real estate transactions found elsewhere in this section of today's Herald and take a look for yourself. Some of these transactions were handled direct from seller to buyer but most of them were handled by builders, developers and real estate brokers. This is not to say that what happened to Mr. and Mrs. Buyer could not happen if you purchased an older home through a real estate broker. But we can tell you that the chances of it happening are very slim. Most any good real estate broker will include in the sales contract he prepares for a special transaction a provision that all appliances will be checked out and if they are not in good operating condition they will be put in good working order. There are a dozen other pitfalls that buyers of older homes can escape by buying through a reputable and experienced real estate brokerage firm. Or, if you must purchase a home directly from the seller, insist that an experienced attorney be retained to prepare the sales contract.

Without Noise Or Pollution Space-Age Fuel Cell Provides Power

WINTER PARK — Florida's first installation of a fuel cell powerplant producing on-site electricity from natural gas will go into operation within a few weeks. The space-age fuel cell is being installed by Florida Gas Company to provide power for an ultra-modern townhouse at Lake Buena Vista, Fla., host community to Walt Disney World. It will provide electricity without wires, noise or pollution, and without combustion. The experimental fuel cell will be tested for two months under a long-range, nationwide research program called TARGET. The \$50 million program is attempting to determine the practicality of natural gas fuel cell powerplants for on-site generation of electricity for industrial, commercial and residential use. TARGET (Team to Advance Research for Gas Energy Transformation) is a non-profit organization financed by a group of gas and combination gas and electric utilities, including Florida Gas. Prime contractor in the research program is Pratt & Whitney Aircraft, East Hartford, Conn., which has produced a number of experimental fuel cell units for testing in various installations throughout the nation. The powerplant has three elements — a reformer, the fuel cell itself and an inverter. The reformer processes natural gas for fuel cell use. This processed natural gas flows into the fuel cell, where it is combined with oxygen from the atmosphere to electrochemically produce direct current. The inverter converts the direct current to alternating current for household use. The process is highly efficient, quiet and virtually free of pollution. The only by-products are water vapor and harmless carbon dioxide. Pratt & Whitney Aircraft developed and manufactured fuel cells for the Apollo space flights which supplied the electrical power needs for the moon-bound astronauts.



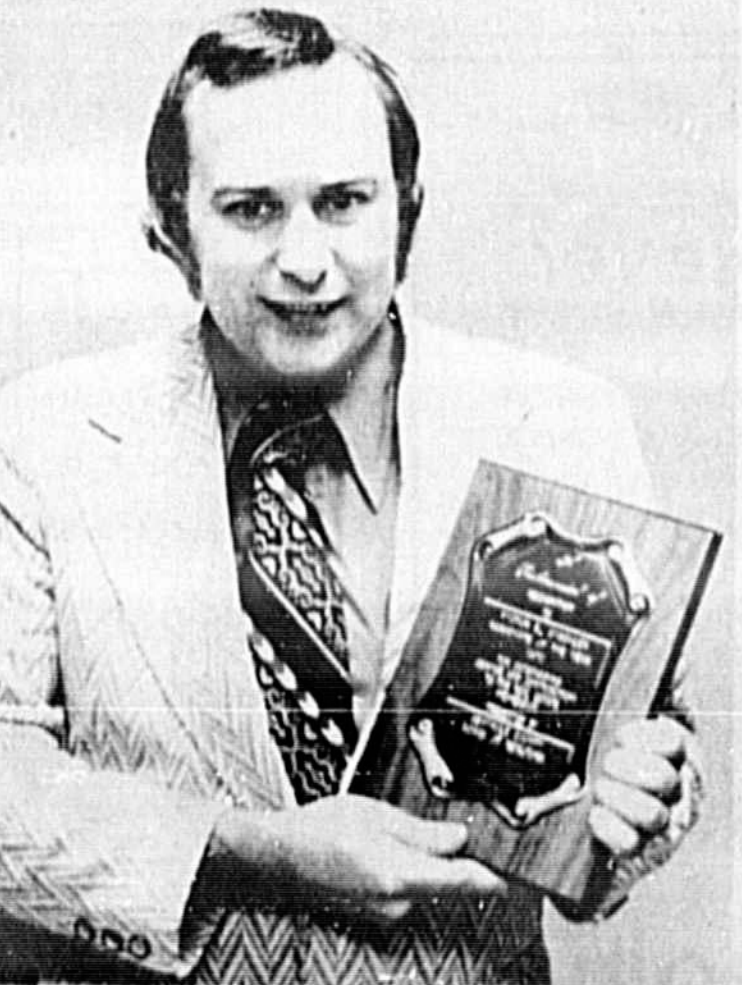
ELECTRICITY for one of the units in this townhouse complex at Lake Buena Vista, host community to Walt Disney World, will be produced by a natural gas fuel cell. The fuel cell powerplant, installed by Florida Gas Company, produces electricity on site and without combustion. The only by-products are water vapor and harmless carbon dioxide.

Use Palms For Small City Lots

By DAVID DeVOLL Extension Agent
Palms are noted for their tropical appearance and therefore, of much value for landscape uses. Most homeowners enjoy having one or more palms on their property. The tall slender trunks of many palms make them very satisfactory for small city lots, and street plantings as they require very little space. We are limited to the palms that will thrive in our area as most palms will not tolerate frosts. The palms listed here are hardy enough to survive and grow in our area. These species include Queen palm, Cocos australis or Butia capitata, European Australian and Chinese fan palms, Canary Island, Senegal and Indian date palms, Broadleaf lady palm, needle palm, Puerto Rican Hat palm, cabbage palm, Washington palm, Windmill palm and saw palmetto. Occasionally, some other species can be grown in a warm, protection location.

You'd never expect to see Lord & Taylor furnishings in a mobile home park. But you'll never see a mobile home park anything like The Forest.

It's a new mobile home community. Strictly for adults. Completely finished. With atmosphere and amenities that reach far beyond anything attempted in America to date. Start with a half-million dollar Nils Schweizer cedar clubhouse. Decorate it with furnishings from Lord & Taylor of New York and fine art from a private collection. Surround it with a Lloyd Clifton 18-hole mini-golf course, Har-Tru tennis courts, championship shuffleboard courts, swimming pools, an authentic grass lawn-bowling court, three bass-fishing lakes, sauna baths, a men's private billiard room and . . . well, that's just the beginning. Put it all deep in a Florida forest — just a 15 minute drive from downtown Orlando — and all of a sudden mobile home living takes on a whole new dimension. Come discover The Forest. Created exclusively for active adults. Simply the finest new mobile home community in America today.



ASSOCIATE OF THE YEAR Award was presented to Victor Gischler of Stemper Realty at Annual Meeting of Seminole County Board of Realtors held at Land O' Lakes Country Club, Casselberry. (Staff Photo)

THE FOREST

OPEN 12 NOON TO 6 PM
834-3413
524 W. LAKE MARY BLVD.

Land o' Fabrics

A World of Wonderful Fabrics
104 E. FIRST ST. phone 323-2810
MASTERCHARGE BANK AMERICARD
STORE HOURS: 9 TO 5:30 EACH DAY
POLYESTER
DOUBLE KNITS \$2.88 YD
• 1, 2 & 3 Color Knits
• 58 - 60 Inches Wide
• 1 - 5 Yard Lengths
• Values to \$6.00
POLYESTER
CREPE \$3.33 YD
• Regular \$3.99 Yard
• Machine Washable
• Solid Colors
MATTIE
JERSEY'S \$1.79 YD
• Solid Colors
• Prints
• Machine Washable
104 E. First St.
DOWNTOWN SANFORD
Phone 323-2810

Beautiful Gifts FOR THE HOME

Come From THE ORLANDO FORGE

POLISHED BRASS ACCENTS FOR YOUR HOLIDAY HEARTH

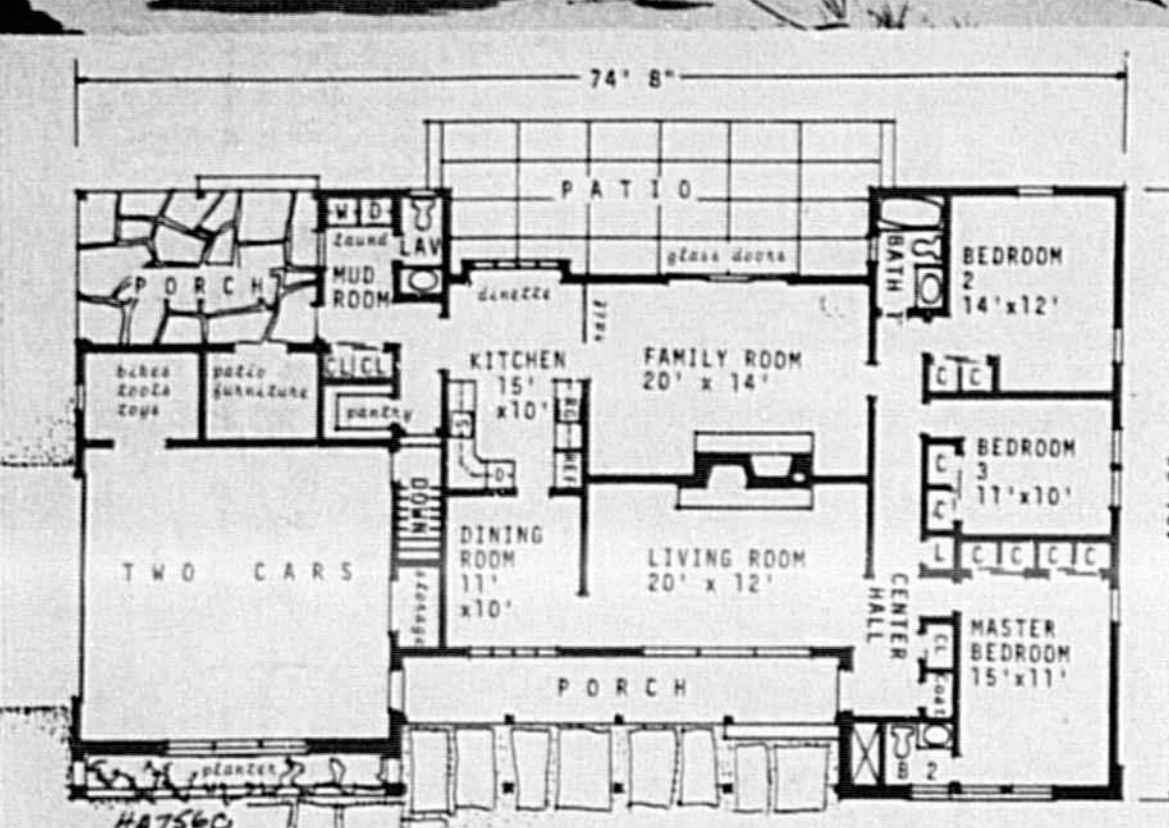
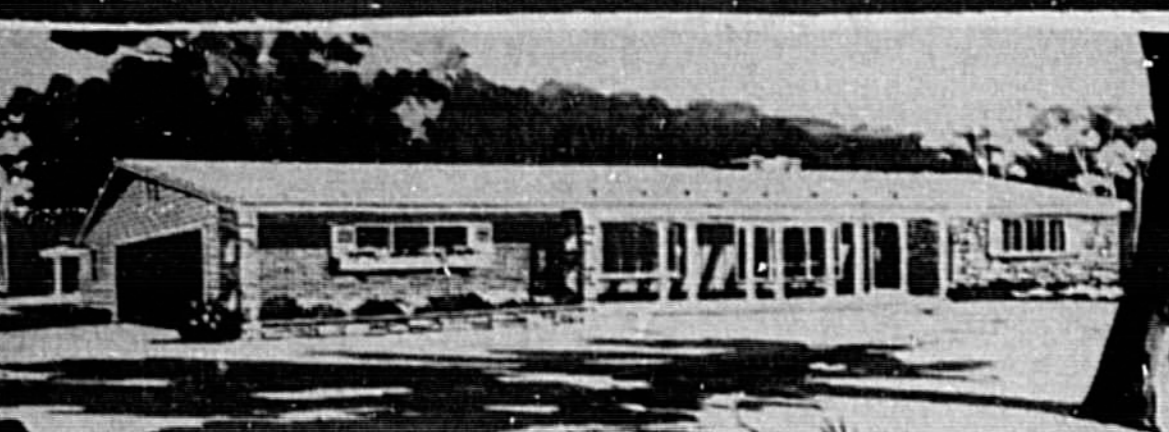
The Orlando Forge is headquarters for fireplace equipment and accessories of all kinds. Here you can choose from the largest selection of Flexscreen Fireplace ensembles in Central Florida. Modern, Early American, Traditional and Classic styles are available. . . also Fireplace Tools, Grates, Andirons, Brooms and other appointments to match your decor.

Serving Central Florida for 32 Years
THE ORLANDO FORGE, INC.
711 N. ORANGE AVENUE WINTER PARK, FLORIDA
PH. 647-2534

RE-ELECT Gordon Meyer The People's Commissioner

December 5 — Sanford Civic Center
Pd. Pol. Adv. by Wayne Albert, Camp. Treas.

HOMES FOR AMERICANS



ALL AREAS are separated in this ranch plan. The bedrooms have a wing of their own, with two baths. The central portion is given over to formal and informal living, kitchen and dining room. Service, storage and garage are a separate wing to the left. Plan HA756C has 1,545 square feet of living space. It was designed by Lester Cohen, Room 704, 46 W. 46th St., New York, N.Y. 10036. Anyone interested in knowing the price of the blueprint may write to the architect.

Real Estate Deals Can Get Sticky

By JOHN WATTS
Copy News Service

Dear John: I do not know whether or not this sort of thing comes within the scope of your column or indeed whether you are local or a syndicated columnist who makes up letters and answers.

In April 1970, I saw an advertisement for a 2-story house with separate guest quarters for \$20,000. The property turned out to be, not a two-story house, but a two-story building with an apartment upstairs tenanted by a bachelor and a studio-garage downstairs tenanted by a dentist. The broker who showed it to me pointed out that the alcove outside the downstairs bathroom had been piped and wired for a kitchenette and that the downstairs could be made into a self-contained unit by the addition of a stove, refrigerator-sink combination.

In June 1971, I moved downstairs into the new quarters to a young employed couple. About a week after I moved in downstairs a man from the Housing Department showed up, claimed the neighbors complained that the place was illegally occupied by two families, told me the downstairs kitchen facilities were illegal and to remove them within a month or be cited by the district attorney's office.

In July 1971, I called the Legal Aid office who referred me to an attorney who referred me to one of his partners who asked for and received \$500 relative to assist me in my predicament.

In December the Planning Commission, who had viewed the premises from the outside only on their "inspection" tour noted that the place was a one-family residence and that no part of it could be rented.

The lawyer sent me a bill for \$273 more for handling the matter.

After Hike, Index Is Settling

NEW YORK — After two record-setting months, the Dodge Index of construction contract value settled back to 171 in October, it was reported today by the F. W. Dodge Division of McGraw-Hill Information Systems Company. The firm, an authority on the construction market, produces Dodge Reports and Sweet's Catalogs.

The seasonally-adjusted Dodge index, which reflects the rate of contracting for future construction work of all kinds, broke into the 180's for the first time in August and then peaked at 187 in September. Despite October's setback, the value of the month's construction contracts, which totaled \$8,225,380,000, was 23 per cent higher than the comparable 1971 month.

According to George A. Christie, vice president and chief economist for Dodge, "A comedown from the extraordinary rate of contracting of the past two months was inevitable, and there's probably some additional decline in store as the construction industry adjusts to 1973's economic climate."

See the above answer regarding flashing you can use either roofing cement or the fiber-glass material patch. There are many other products that also will do the job including various kinds of cements, plastic steels and metal patches.

DO IT-YOURSELF Interior Painting Attack Plan

By MR. FIX

As paints are formulated to be easier and easier to apply and as the cost of labor gets higher and higher there is a natural tendency to put painting, especially interior painting, well into the do-it-yourself category of home chores.

But while no-drip, no-splash, dries-in-an-hour type paints may have changed the chore itself, there is no change in what you have to do ahead of time. Painting has always been the easy part of the job. Now it's even easier. But what makes painting both easy and successful is the kind of preparation you do in advance.

Clear the area before you do anything. Every small, movable item should be removed. This includes lamps, vases, chairs. Clear the table tops. If you can't move a large object completely out of the room, then move it to the center of the room.

Everything remaining in the room should be covered. So should the floor. Drop cloths and plenty of newspapers will provide protection. Plastic drop cloths are inexpensive and O.K. if you only paint occasionally.

A cotton drop cloth, while more expensive, is better in the long run. Paint does not dry quickly on the plastic since it is not absorbed. When it does dry it flakes off.

With the room protected, check the surface to be painted. It should be clean. No paint will adhere to a



dirty surface. Most of the time simply vacuuming or dusting will do. Kitchen walls tend to be greasy and should be washed with a detergent. Any glossy surface should be lightly sanded or wiped down with the so-called liquid sanders, chemicals which prepare the surface for painting.

Examine the walls for cracks. Use spackling compound to fill hairline cracks. Plaster patch should be used for bigger cracks. Open the crack, clean out the loose material and make the opening wider at the bottom than at the surface. Moisten and apply the patching compound. Sand the area smooth when it has dried. Prime

these spots with a thin coat of paint or shellac. Take down drapery, curtains, window shades, curtain rods. Remove switch plates and outlet covers. Don't try to paint around them.

Apply masking tape to protect woodwork, doors and window frames, adjoining surfaces of other colors.

Get yourself a supply of rags to clean up splatters and drips. Have a few brushes and rollers clean and ready to use. Check ladders or step stools, whatever you will stand on to reach high areas, to make certain they are safe and comfortable.

For either of Andy Lang's helpful booklets, "Wood Finishing in the Home" or "Paint Your House Inside and Out," send 50 cents and a long stamped, self-addressed envelope to Know-How, P.O. Box 477, Huntington, N.Y. 11743. Be sure to specify which booklet you want.

A — There are a number of ways to patch what appears to be a pinhole opening. One is to spread roofing cement over the area and generously to be certain that the opening, wherever it may be, is completely filled. Another method is to use a patching kit that consists of a fiber-glass material and a compound. The material is spread over the suspected area, then covered with the compound.

Q — There is a leak at one point along one of the gutters on my house. How can it be halted?

See the above answer regarding flashing you can use either roofing cement or the fiber-glass material patch. There are many other products that also will do the job including various kinds of cements, plastic steels and metal patches.

Q — I have always used spackling compound to make repairs in a plaster wall. A painter who did some work for me recently said to use one of the following: 1. A — There's a difference in composition, but from your own standpoint, the two accomplish the same thing. Plaster of paris dries much quicker, so that only enough should be mixed to cover a small surface. Some painters get good results by making a 50-50 mixture of plaster of paris and spackling compound.

Q — There is a small leak around the flashing at one of the vents in our roof. The flashing seems to be in good condition, but the leak nevertheless is there. How can it be repaired?

See the above answer regarding flashing you can use either roofing cement or the fiber-glass material patch. There are many other products that also will do the job including various kinds of cements, plastic steels and metal patches.

Q — There is a leak at one point along one of the gutters on my house. How can it be halted?

See the above answer regarding flashing you can use either roofing cement or the fiber-glass material patch. There are many other products that also will do the job including various kinds of cements, plastic steels and metal patches.

Seminole County Real Estate Transactions

Lamar Griffin III and wife Corinne C. to Gary Meade, Tom Zabel, Robert Zabel and Jon W. Zabel, \$75,000. L1 & B1 & B2 B1 & B3 Williams, LW, \$65,000. State Florida, Florida Department Trans. to Orlando Quadrant Dev. LTD., Borrow Pk No. 2 right (East) Sta. Sec. 28-21-20 etc. 2.76 ac. & 343 ac. acre, \$17,700.

Allen J. Waggoner and wife Eleanor L. to William J. Small and wife Doris J. L1 29 So. Pinescrest, 1st Addn., \$18,900. Greater Constr. Corp. to S. B. Brown III and wife Marian H., L14 B1K D The Meadows West, \$32,100.

Tompkins Land Co., Inc. to Robert J. Deneweth and wife Doris L., L1 52 Trailwood Est., \$19,100.

Casselberry Gdns. Inc. to William C. Campbell and wife Marilyn C., L1 24 Seminole Roway St. Addn. \$2,000.

Ray G. Williams and wife Ruby Lillian E. Dugan, 5 3/4' x 114' & addn. of 1/4 B1K D 2, Traffords Park, \$9,233.

Walter H. Kroepel and wife Ada to Elmer T. Schneider and wife Alma E. L1 18 Eastbrook s-d, \$24,100.

Douglas L. Gerton and wife Joyce M. to J. B. Steelman Jr., L1 6 B1K 2 Heltter Homes, \$14,000.

Arthur Cleveland and wife Ethel to Mildred Virginia Rhodes, single, L1 5 B1K A Roseland Park, beg. 190' N & 173' E of SE cor. L1 A, \$500.

Constance A. Fox and Angela Constantine, widow to Elizabeth B. Williams and Linda W. Tangeman, W15 Lots 9 & 10, B1K 5, Tier 5, Sanford, \$3,000.

Richard A. Pace, single to E. G. Banks and wife Patricia Monogram Investment Corp., L1 7 B1K A So. Fern Pk s-d mtg. \$75,000, \$50,000.

Thomas C. Harran and wife Betty to Ross E. Adams and wife Melba J., L1 3 B1K C Carriage Hill, \$33,000.

Ronald Hobart Achord to Hazel Sallie Hines, L1 22 B1K A Sunset Manor Addn. \$100.

David L. Huffman and wife Agnes J. to Richard McCaffrey and wife Isabelle, Sec 33-20-32, \$7,362.00, \$5,000.

David L. Huffman and wife Agnes J. to Richard McCaffrey and wife Isabelle, Sec 33-20-32, \$7,362.00, \$5,000.

Warren C. Tucker Jr. and wife Mildred to Leon J. Merck and wife Phyllis L1 2 B1K C Druid Hills, \$25,500.

International Land Planning Inc. to Carlo Mayer and wife Anne, L1 5 Sleepy Hollow 1st Addn., \$19,900.

Wilco Constr. Co. to Claude M. Roebuck and wife Ruth R., L1 9 B1K 1 Lynwood Rev., \$25,500.

Bel-Aire Homes, Inc. to Edward Eller and wife Patricia, L1 5 Spring Oaks, \$30,533.

The Huskey Co. to Irving Roth and wife Helen J., L1 5 B1K C Sweetwater Oaks, \$63,000.

JHM Hauling & Grading Co. to A. Joseph McCloskey and wife M. Joyce, L1 & B1K B San Sebastian Hts., \$36,300.

Samuel Wright and Annie Mae to Church of God, Pinescrest, 1st Addn., \$18,900. Greater Constr. Corp. to S. B. Brown III and wife Marian H., L14 B1K D The Meadows West, \$32,100.

Joseph F. Fawcett and wife Martha, L1 B1K F Woodmere Park 2nd Addn., \$11,500.

Dulma Marie D. Webb and husband Arlon to C. Carl Bell, L1s 22 & 23 B1K E, Tr. 30, Sanford Springs, \$4,500.

James W. Earley and wife Gretchen M. to Carl J. Helton and wife Beulah, L1 9 B1K 23 Heltter Homes Howell Park, \$17,200.

Robert W. Blouin and wife Mary R. to Donald L. Findell and wife Rita, L1s 179, 180 & 23 Loch Arbor Crystal Lakes Club, \$58,500.

Robert W. Bourbeau and wife Alice D. L1 64 Sleepy Hollow, \$10,000.

Jack Burney and wife Phyllis to Albert A. King and wife Vaudeen R., L1s 8, 9 & E 20' of L1 10, Addn. \$10,000.

William M. Norris, to Paul M. Norris, L1 14 B1K 8 Weatherfield 1st Addn., \$5,100.

Jack R. Stowe and wife Letitia A. to J. Elf Erickson, L1 18 B1K 6 Heltter Homes Orlando, \$17,000.

Larrence Cooper and wife Shirley A. to W. N. Norris and wife Ada J., L1s 14 & 15 & N1/2 of 16 B1K A, Tract 32, Sanford Springs, \$50,000.

Robert W. Fowler and wife Glenda F. to Donald K. Brooks and wife Dolores, L1 18 B1K 3, Orlando sec. Addn., \$20,400.

Alfred M. Le Batard and wife Mary E. to Daniel W. Gallo and wife Nancy L., L1 48 Woodcrest, \$28,000.

James L. Johnson and wife Elizabeth to William W. Hall and wife Carmela I., L1 49 B1K 9 Heltter Homes, Howell Pk., \$22,000.

Francis G. Hood and wife Bernice E. to Charles M. Booth Jr., J. Ken Higgins and Clarence A. Johnson II, sec. 2-23-30, 272 acre & Sem Co., 35-21-30, land part, \$290,300.

Emily Elizabeth Long to Fred Williams, L1s 2 & 3 B1K 6 Tier 5, Traffords Park, \$13,500.

Hobbs & Assoc., Inc. to C. A. Hibbs Jr., Inc., sec 21-30 mtg. \$1,090,000.

Tompkins Land Co. Inc. to Clarence H. Braeklein and wife Ora F., L1 138 Trailwood Est., \$22,700.

Horace E. Charles, Bose and wife Linda V., L1s 9, 10 & 11 B1K 3, Tier 7, Traffords Park of Sanford, \$19,000.

Mathew T. Dunn and wife Joyce to Alan C. Glueck and wife Gistaine — L1 341 Forest Brook, 3rd Sec., \$35,500.

Bel-Aire Homes, Inc. to James Norton, Dulick and wife Deborah D., L1s 8, Spring Oaks, \$30,300.

Woodmere Dev. Ctp to Charles I. Hackett and wife Rose M., L1 35 B1K E Woodmere Park 2nd Addn., \$18,600.

Wilco Constr. Co. to James R. Stark and Peggy H., L1 B1K 1 Wynwood Rev., \$26,900.

Thomas H. Everhart and wife Donna L., Sec 7-20-31, \$75,000.

Sale-Dale Bldrs. Inc. to Francis J. Sladyk and wife Charles, L1s 22 & 23 B1K 10 of 33 B1K 60, Sanford Sub Beant., Palm Springs, sec \$27,800.

Leonard K. Wright Sr. and wife Helen to Sidney L. Wintham and wife Helen, L1 33 Lakewood Shores 1st Addn., \$33,000.

Frank B. Ayers Jr. and wife Phyllis to Billy J. King and wife Norma D., L1 3 Edgewood Manor, 1st Addn. \$13,500.

(QCD) Marie Miller De Puy to Clarence Edward De Puy Jr., \$300 of L1 62, all of L1s 63 & 64 Walter's Lakeview Terr. s-d \$100.

Clarence E. De Puy Jr. to Jack J. Robinson and wife Helen, L1 30 of L1 16 & S 110' of W 1/2 of 17 B1K C, Lk Wayman Hts., \$18,400.

Jeanne Homes, Inc. to James C. Lenz and wife Susan J., L1 19 B1K G Sps Lk Hills, \$56,000.

(QCD) Epoch Prop., Inc. to Paul G. McCormick and wife Mona L., L1 17 of L1 B1K C The Springs s-d Oak village, \$300.

L. W. Hawley and wife Barbara Jo to Bob R. Pope, L1s 15 and 16 B1K H Tract 59, Sanford Springs, \$5,000.

Frank J. Cunningham and wife Nancy A. to Cliff Jordan, L1 17 B1K D Harmony Homes and L1 10 B1 B, \$14,300.

George Prop., Inc. to Bel-Aire Homes, Inc., L1s 222-358, Inc., and L1s 540-511, Inc. 1 Spruick Oaks Unit III, \$1,188,000 plus \$100.

Elah Fleece, widow to Georges C. Laurent, trustee, Commence at SW cor of Sec. 31-20-30 run thence N along W line of SW 1/4 dist. 590 ft. to pch. run E along line parallel line etc. \$100,900.

E. H. Thomas and wife Ann D. and Jesse M. Waller and wife Gay S. to Ballard Street Apts., Ltd. Partnership, 5 495' of SW 1/4 of SW 1/4 of Sec. 10 and NW 1/4 of SW 1/4 (less S 35 acres) of Sec. 19-21-30, \$2,000,000 mtg. and \$175,000.

James B. Walsh and wife A. Jeannine to Michael S. Davis and wife Carol, L1 10 East E. 15 40' and E 3/4 of L1 11 B1K 62 Sanford Sub Beant., Palm Springs, \$33,400.

Brandon and Son Bldrs Inc. to David S. Fanning and wife Lois M., L1s 13 and 14 B1K C Lk Wayman Hts., \$41,500.

Sharon McGraw, single to J. B. Steelman Jr., L1 Un. 3 Eastbrook s-d, \$11,900.

Dave Wallace and wife Bessie to Clifford D. Jordan, trustee — E 300' of L1 56, N of Wagner Rd., B1K D D. R. Mitchell Survey of Levy Grant, \$28,900.

Ronald C. Viareggio and wife Jeanne S. to Betty H. Sutter and wife Lettie H., L1 11 B1K B Draid Hills, \$24,000.

Sole-Dale Bldrs Inc. to Wayne S. Malm and wife Anne E., N 25' of L1 230 & S 90' of L1 392 Queens Mirror So., \$19,700.

Rene A. Rodriguez and wife Maria to Victor Mendez and wife Jeanne M. Bonelli, L1 11 B1K 23 Heltter Homes Howell Pk., \$18,800.

Robert E. Shaw and wife Kathy

Pollution Reduces Crops

By FRANK J. JASA
County Agricultural Agent

Scientists have recently demonstrated in field experiments that ozone, a major component of air pollution reduces yield in an agricultural crop.

Previously, the deleterious effect of air pollutants had been mainly demonstrated and measured by visible injury to plants or by physiological responses of plants in the laboratory. Now the proof is in ozone reduces yield in sweet corn. Field studies in other crops are underway.

Motor vehicle exhaust is the primary source of ozone. If it is formed as sunlight reacts with the products of motor fuel combustion.

Agricultural researchers exposed Golden Midget and White Midget, two well known sweet corn varieties to charcoal filtered air containing 0.5, and 10 parts per hundred million of ozone for 6 hours each day from the time the corn emerged until harvesting. These doses of ozone are lower than those commonly found in many urban areas.

Ozone caused more visible injury and greater reductions in growth and yield of Golden Midget than White Midget. These findings confirm many observations that some varieties of crop plants are more tolerant to pollutants than others. The higher the ozone concentration, the greater the reductions in the number of ears with kernels, the amount of ear fill, the amount of kernels per ear and dry weight.

in a class by itself



The GOLDEN ARMS

IMMEDIATE OCCUPANCY

New Smyrna Beach's Finest Oceanfront Condominium

86 Luxury Units On the Ocean With Covered Parking

\$50,000 and less with as little as **10% Down**

• OPEN DAILY •
601 N. Atlantic Ave.
VERN MYERS, INC., Realtor
2795 Lee Rd., Department OS
Winter Park, Florida 32789
(407)-461-4747 or (407)-461-2641

Here's the Answer

By ANDY LANG
AP Newsfeatures

Q — The present owner of our house used varnish on the plaster walls. I want to get it off before painting the linoleum. A neighbor says it can be done with trisodium phosphate. Is this true?

A — Yes. Mix about three pounds of trisodium phosphate in a gallon of lukewarm water. Spread the mixture on one section of the linoleum. As soon as the varnish appears to be softening, rub it with steel wool. Then thoroughly, then allow to dry. Repeat the procedure on a second section, and so on. Divide the kitchen into about six sections for a room about 10 feet by 12 feet — more sections for a larger room. When all the varnish has been removed, wait at least two days before applying paint.

Q — There is a small leak around the flashing at one of the vents in our roof. The flashing seems to be in good condition, but the leak nevertheless is there. How can it be repaired?

A — There are a number of ways to patch what appears to be a pinhole opening. One is to spread roofing cement over the area and generously to be certain that the opening, wherever it may be, is completely filled. Another method is to use a patching kit that consists of a fiber-glass material and a compound. The material is spread over the suspected area, then covered with the compound.

Q — There is a leak at one point along one of the gutters on my house. How can it be halted?

See the above answer regarding flashing you can use either roofing cement or the fiber-glass material patch. There are many other products that also will do the job including various kinds of cements, plastic steels and metal patches.

See the above answer regarding flashing you can use either roofing cement or the fiber-glass material patch. There are many other products that also will do the job including various kinds of cements, plastic steels and metal patches.

See the above answer regarding flashing you can use either roofing cement or the fiber-glass material patch. There are many other products that also will do the job including various kinds of cements, plastic steels and metal patches.

See the above answer regarding flashing you can use either roofing cement or the fiber-glass material patch. There are many other products that also will do the job including various kinds of cements, plastic steels and metal patches.

See the above answer regarding flashing you can use either roofing cement or the fiber-glass material patch. There are many other products that also will do the job including various kinds of cements, plastic steels and metal patches.

See the above answer regarding flashing you can use either roofing cement or the fiber-glass material patch. There are many other products that also will do the job including various kinds of cements, plastic steels and metal patches.

See the above answer regarding flashing you can use either roofing cement or the fiber-glass material patch. There are many other products that also will do the job including various kinds of cements, plastic steels and metal patches.

See the above answer regarding flashing you can use either roofing cement or the fiber-glass material patch. There are many other products that also will do the job including various kinds of cements, plastic steels and metal patches.

Gale Mini Gallery



LET IT RAIN! READY FOR YOU

Located in Casselberry, this three bedroom, two bath home is ready for you to move in before Christmas. Call coordinated \$10,900. Call: Edith Durr, associate, Oviedo office, 365-5666.

Like the idea of a home filled with sunshine? This four bedroom, two bath home is arranged to let the maximum amount of light into the living areas. Call coordinated \$10,900. Call: Edith Durr, associate, Oviedo office, 365-5666.

Like the idea of a home filled with sunshine? This four bedroom, two bath home is arranged to let the maximum amount of light into the living areas. Call coordinated \$10,900. Call: Edith Durr, associate, Oviedo office, 365-5666.

Like the idea of a home filled with sunshine? This four bedroom, two bath home is arranged to let the maximum amount of light into the living areas. Call coordinated \$10,900. Call: Edith Durr, associate, Oviedo office, 365-5666.

Like the idea of a home filled with sunshine? This four bedroom, two bath home is arranged to let the maximum amount of light into the living areas. Call coordinated \$10,900. Call: Edith Durr, associate, Oviedo office, 365-5666.

Like the idea of a home filled with sunshine? This four bedroom, two bath home is arranged to let the maximum amount of light into the living areas. Call coordinated \$10,900. Call: Edith Durr, associate, Oviedo office, 365-5666.

Like the idea of a home filled with sunshine? This four bedroom, two bath home is arranged to let the maximum amount of light into the living areas. Call coordinated \$10,900. Call: Edith Durr, associate, Oviedo office, 365-5666.

Like the idea of a home filled with sunshine? This four bedroom, two bath home is arranged to let the maximum amount of light into the living areas. Call coordinated \$10,900. Call: Edith Durr, associate, Oviedo office, 365-5666.

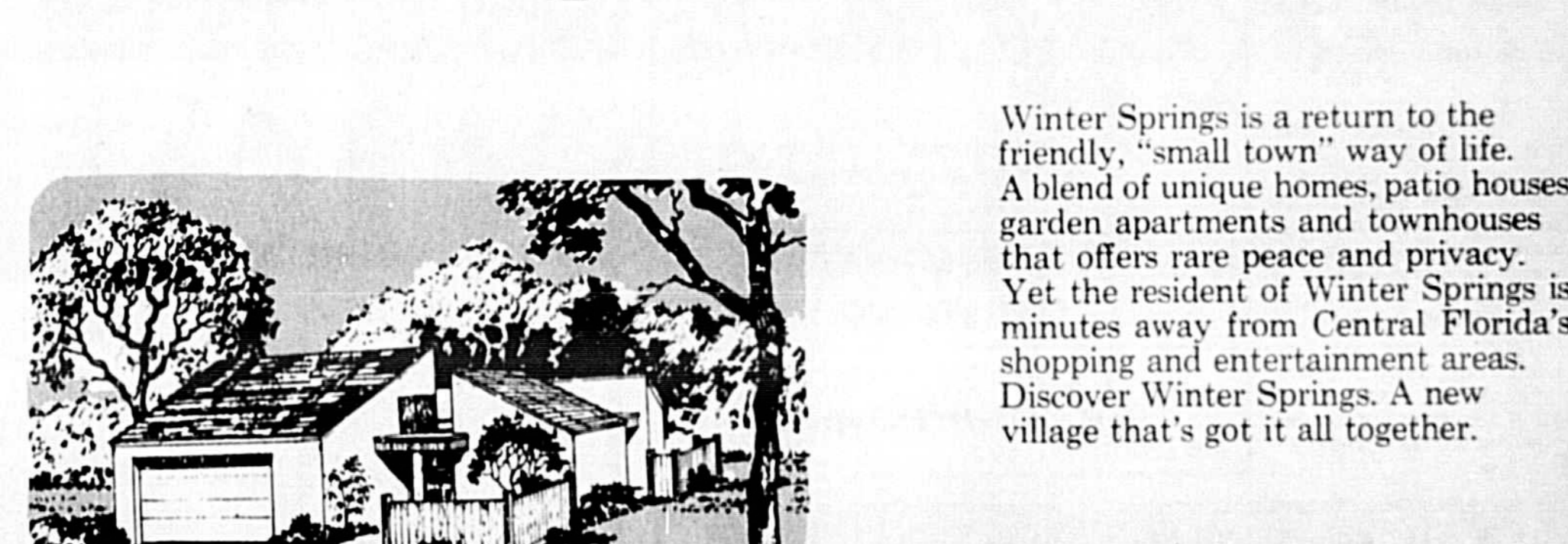
Like the idea of a home filled with sunshine? This four bedroom, two bath home is arranged to let the maximum amount of light into the living areas. Call coordinated \$10,900. Call: Edith Durr, associate, Oviedo office, 365-5666.

Like the idea of a home filled with sunshine? This four bedroom, two bath home is arranged to let the maximum amount of light into the living areas. Call coordinated \$10,900. Call: Edith Durr, associate, Oviedo office, 365-5666.

Like the idea of a home filled with sunshine? This four bedroom, two bath home is arranged to let the maximum amount of light into the living areas. Call coordinated \$10,900. Call: Edith Durr, associate, Oviedo office, 365-5666.

Like the idea of a home filled with sunshine? This four bedroom, two bath home is arranged to let the maximum amount of light into the living areas. Call coordinated \$10,900. Call: Edith Durr, associate, Oviedo office, 365-5666.

Exciting things are happening in the village of Winter Springs



Winter Springs is a return to the friendly, "small town" way of life. A blend of unique homes, patio houses, garden apartments and townhouses that offers rare peace and privacy. Yet the resident of Winter Springs is minutes away from Central Florida's shopping and entertainment areas. Discover Winter Springs. A new village that's got it all together.

WILCO CONSTRUCTION
From the drawing board of Miami architect David Perez come some of the most revolutionary single-family homes ever to be seen in Central Florida. Developed by Wilco Construction Company, the Perez-styled homes offer exciting California architecture at a price you can live with. Comfortably.

ROSS HOMES
You may choose from an outstanding collection of Colonial, Spanish and California Ranch designs. Each home offers an outstanding array of features including fully-equipped kitchen, air conditioning and carpeting.

MARK BUILDERS
Successful in Sarasota, St. Petersburg, Miami and Puerto Rico, Mark Builders brings the Mark VIII design to Winter Springs. This distinctive concept features a most enjoyable indoor-outdoor family recreation area complete with gas barbecue.

Discover the village of Winter Springs now. From Orlando-Winter Park, take I-4 or 17-92 North to 434, then East. One mile east from the junction of 17-92 and 434.

Florida Land Company
A subsidiary of Florida Gas Company

ON THE HOUSE

By ANDY LANG AP Newsfeatures

Use pliers to loosen the hex nut on a faucet stem and you're most certain to damage the chrome or polished surface of the fixture.

That mistake — using pliers for the loosening or tightening of nuts — is repeated again and again in households everywhere. Pliers are for holding, wrenches for turning.

The most versatile of the wrenches used around the home is the adjustable, so named because the jaws can be adjusted to fit any size nut within the capacity of the particular tool. Its one disadvantage is that its head is sometimes too large to manipulate properly in close quarters.

An open-end wrench has a nonadjustable opening to fit a nut of a definite size, which

The Home View

By LOUISE L. GILL Extension Home Economics Agent

SHOPPING COURTESY — Are you a "supermarket hazard"? Many consumers are! Farmers, processors and merchants spend thousands of dollars in research finding ways to get fresh produce to the consumer in peak quality condition, yet many homemakers pinch, press, or handle roughly fresh fruits and vegetables. Due to this mishandling, about 10 per cent of certain perishable produce must be discarded. Guess who has to absorb the loss! You, the consumer.

Other thoughtless practices also contribute dollars to your shopping cost each year. Items taken from the shelves and thoughtlessly placed at any convenient location along the shopping route when the consumer changes her mind about purchasing the item is a real headache to merchants. Employees must be paid to collect such strewn merchandise and return it to its proper location.

And those shopping carts! Consumers often forget that these conveniences cost about \$40 each. When they are carried to the parking lot by thoughtless shoppers and left, any number of things may happen to the carts. They may be damaged, stolen or they deteriorate due to exposure. Under the best conditions, an employee must be paid to retrieve and return the carts. Cart misuse adds to the shoppers' cost of merchandise.

Other things also cause an increase in merchandising cost, such as broken merchandise, opened packages, damaged or soiled items. Then there is always outright theft!

If consumers were more careful and courteous, they could receive more for the money they spend and also they would make a real friend of the merchant.

With Do-It-Yourself Kits Remodel A House Or Grow A Garden

By VIVIAN BROWN AP Newsfeatures Writer

Do-it-yourself, ecological and crafty kits under the Christmas tree.

Instructions and equipment are available for making anything from your own furniture or sprouting your own beans. There is a kit for making patchwork placemats. And there are books galore on house remodeling, crafts, decorating.

Needwork kits are top-of-the-tree favorites this year. And expensive if the design is unusual. One kit in a chessboard design is featured at \$100.

Many furniture kits come with parts that are ready to be assembled. One may make chairs, tables and even grandfather clocks on the home assembly line.

Ecologist types and health food enthusiasts are gung-ho for electric juicers, seed sprouters (complete with a good assortment of seeds), food mills and grain grinders. One new yogurt maker has five sealable jars that can go right from the electric unit to the refrigerator.

Pipe wrenches are just that: wrenches for gripping and turning pipes. Like pliers, they will cause damage to nuts, bolts and polished fixtures.

There literally are hundreds of other kinds of wrenches, each for a specific purpose. Probably the most important point in the use of a wrench is to be certain that it fits tightly on whatever it is to turn. If it is loose, it will round the corners of the nut. Even more important, it may slip and cause physical injury to the user.

A wrench should be pulled, not pushed. If necessary, turn the wrench over after each turn of the nut or bolt. It will "take longer," but it will prevent slippage and, in the case of adjustable and pipe wrenches, it will not put undue strain on the adjustable jaws.

Mini-greenhouses come with packets of seeds, pots, soil. And there are herb kits with pots and growing instructions.

For the do-it-yourselfer with gourmet tendencies, there are kits for making cheese and wine — even a cold duck wine-making kit. A home liquor kit is listed as making cordials as good as the popular brands. And a gourmet cookware set contains a soufflé dish, a crepe frying pan, a crepe turner, six brassy snifter glasses and a cookbook, all in the interest of a do-it-yourself soufflé or crepe suzette.

What one can't find in equipment and kits may be available in gifts of books for do-it-yourselfers and craft artists. These range from "187 Things To Make Out of Paper" to books on building furniture. Books for all interests include:

"The Craft of Handweaving" by Iona Faith has been revised almost 123 designs for upholstery, chair seats, slipcovers, draperies, casement cloth, draperies by long-time weaver Faith.

"Baik for Beginners" by Beryl Martin is a slim book that is a practical guide to the ancient method of patterning fabric. In addition to the basic wax-dye resist method, there is a paste resist (made from rice of flour) method for young children and many illustrations.

"Stained Glass Craft" is another slim book that will appeal to craft enthusiasts. It was written by J.A.F. Divine, lecturer in arts and crafts and craft master G. Blackford, English workmen and designers. The book offers facts the beginner needs to know about cutting glass and avoiding the accidental fracturing of it, fitting, soldering and cementing.

means that you need an assortment of them so that you can match the wrench to the job. Most open-end wrenches have openings at both ends, each of a different size. When one end of the wrench has an open end and the other has a so-called boxed end, a circular opening to grip the nut, the wrench is known as a combination. When the circular openings are on both ends, you have a box wrench. A box wrench holds a nut more securely, is not likely to slip no matter how much pressure is applied and sometimes can be used in cramped quarters where an open-end wrench cannot be fully turned.

Socket wrenches have ends like box wrenches and usually come in sets, with different sizes of detachable sockets and handles. They are especially handy for working around automobiles and other kinds of mechanized vehicles.

Socket wrenches are just that: wrenches for gripping and turning pipes. Like pliers, they will cause damage to nuts, bolts and polished fixtures.

There literally are hundreds of other kinds of wrenches, each for a specific purpose. Probably the most important point in the use of a wrench is to be certain that it fits tightly on whatever it is to turn. If it is loose, it will round the corners of the nut. Even more important, it may slip and cause physical injury to the user.

A wrench should be pulled, not pushed. If necessary, turn the wrench over after each turn of the nut or bolt. It will "take longer," but it will prevent slippage and, in the case of adjustable and pipe wrenches, it will not put undue strain on the adjustable jaws.

SANORA OFFERS MORE MORE!

HOUSE VALUE for your money than is available anywhere else in the Central Florida area today!

- CONVENTIONAL 3-BEDROOM**
2-Bath, Dining Room, Living Room, Family Room, Large Inside Utility Room, and 2-Car Garage. **From \$35,250 to \$36,250**
- CONVENTIONAL 4-BEDROOM**
2-Bath, Dining Room, Living Room, Family Room, Large Inside Utility Room, and 2-Car Garage. **From \$36,900 to \$38,500**
- PRIVACY PATIO HOMES**
3-Bedroom, 2-Bath, Dining Room, Living Room, Large Inside Utility Room, Fireplace, Paneling, Wrought Iron, Ceramic Tile Baths, 2-Car Garage with remote controls, Front Courtyard, Entire House and Privacy Garden Wall (4 sides) Stucco over Concrete Block. **From \$42,500 to \$44,900**
- TOWN HOUSES**
3-Bedroom, 2½ Baths, Living Room, Dining Room. Some Styles Include A Family Room. All Feature Patio and Courtyard. Also Double Garages. **From \$39,000 to \$42,000**

In Beautiful Sanora... a new community of homes... developed by Brailey Odham.

MORE!... and now Brailey Odham offers Sanora Homebuyers:

A \$1,000.00 allowance for you to personalize your home in SANORA. Your opportunity to have your say — Wallpaper? Paneling? Change of Paint Colors? Add Tile? Screen a Patio? It's your choice so long as the money is spent to add value to your home.

Don't let this opportunity pass you by

MORE!... A word from Brailey Odham:

I have such confidence in the homes that we build in SANORA and in the continued growth of our area that, if you purchase a home in SANORA and should it become necessary, for any reason, that you leave the Greater Orlando Area (a radius of 40 miles from the center of Orlando) during the first two years of its ownership, I will buy back your home for the 10 per cent down payment which you originally made.

Take advantage of it while offered!

MORE! SANORA OFFERS MORE... FOR HOMEOWNERS... 10 Acre Recreational Park with Jr. Olympic Swimming Pool, Tennis Courts & Basketball Courts. All City Conveniences. Excellent Location.

J. Brailey Odham
Builder • Developer

DIRECTIONS TO SANORA IN SANFORD:
Located on Sanford Ave., south of Airport Boulevard

SALES OFFICE & MODEL HOMES
OPEN DAILY & SUNDAY
Telephone Sanford: 324-4670
Orlando: 295-4370

Real Estate Question Box

Editor:
My husband and I have lived in south Seminole County for about six months. Often we hear Seminole County referred to as a bedroom county. What do people mean when they say that?

LMS, Fern Park

Dear LMS:
Some years ago about two-thirds of this county's population lived inside the city limits of Sanford, a thriving railroad center and an agricultural community. The remaining third of the population was well scattered throughout the county.

In recent years the growing population of Orlando spilled northward into Winter Park and Maitland, and it crossed the Orange County line into Seminole County to populate Fern Park, Casselberry, Altamonte Springs, Longwood and North Orlando. The establishment of FTU had created considerable growth in the Orlando area. Also, thousands of people now live in south Seminole outside the corporate limits of the communities mentioned.

Most of these people who live in south Seminole are employed by Orlando and Orange County business firms. The companies they work for pay taxes in Orlando and Orange County. But their employees live in Seminole and pay taxes only on their residences. Also, since they live in Seminole this county must provide the schools for their children. Consequently, Seminole is short on industrial and commercial property for tax purposes and this causes a higher millage rate on homes than there would be if Seminole had more industrial and commercial tax sources. This is one reason why Seminole County's commissioners recently established a board to bring in more industry.

Editor:
I bought a home several years ago through a local real estate broker and it was financed by a local mortgage firm. I called the broker the other day and asked if he knew where I could get a loan to add a Florida room to my home. He told me to contact the firm holding my mortgage. He said he was certain that I had an open end mortgage. What is an open end mortgage?

VRS, Sanford

Dear VRS:
This means that you can go back to your mortgage firm and, if you are qualified, you may add on to your present mortgage the amount you need to add that Florida room. The beautiful part of it is that you will not have to refinance the entire loan on your home because this would be extremely costly. You can get the funds you need to add the room and pay only the fees for the amount you need and the monthly payment on your mortgage will be increased only slightly. Do as your broker advised. Your open end mortgage, if you have one, is a real asset.

Editor:
My husband and I are both young. We've been renting, but we have found this nice little place in the county. The owner wants \$15,000. He also owns the place said he would sell us the property for \$1,000 down and the place said he would sell us a deed but not until the total of \$3,000 he said he would give us a deed but not until then. Does this sound like good business?

Mrs. MBS

Dear Mrs. MBS:
Oh, yes, provided everything is handled by a competent attorney. What the owner wants to do is sell you the property and give you what is known as a contract for deed. When you have paid him a total of \$3,000 he will convey the property to you by a general warranty deed. I'm sure what he wants to do is to be sure that you have sufficient equity in the property before he conveys title to you. But you be certain that you enter into this transaction with a contract for deed.



NEW HOME owners are Mr. and Mrs. Donovan Neuell of Orlando first and second from left who purchased this beautiful domicile at 1020 Montclair. Dan T. Gilman, right, presented the Neuell's with a certificate for two large oak trees to be planted in their yard by Sanderson's Nursery. Also participating in the sale was Eleanor Stimpson and Jan Neilsen, third and fourth from left, associates of Roberts and Gilman.

Sanford, Altamonte Annexation Procedures

By BILL SCOTT

Altamonte Springs and Sanford, two of the fast-growing county municipalities are apparently taking opposite steps as regards to extending city limits.

This was borne out in the past week by actions taken by the respective city councils, which ran counter to the other.

Altamonte Springs, literally "bursting at the seams," with more and more requests for annexation, tried to apply some sort of brakes to the ever expanding city boundaries.

Sanford, on the other hand, in its Monday night meeting gave a "green light" to extending its boundaries still further south along 17-92 on the west side to Seminole Junior College.

The east side city limits will be even with the Movieland Drive-In theater across the highway and is set to include several additional parcels fronting the thoroughfare on that side.

Meanwhile at Altamonte Springs, Bud Gemeinhardt, planning and zoning director, outlined to that city's council the following proposed boundaries as limitations for future annexation.

These include across the south side of Orange-Seminole County line, SR 434 on the north; Sanford Avenue and the Seaboard Coastline Railroad on the east and Pearl Lake Causeway north to Sand Lake Road on the west.

Councilman Daniel Dorfman opined that this should establish preliminary guidelines setting the boundary lines and that these are the limits beyond which the city council would consider annexation.

The Sanford Herald Sunday, Dec. 3, 1972—5D

838-1707

Lormann REALTORS ASSOCIATES

LONGWOOD
3 Bedroom, 1 1/2 Bath Home, Waxed Back Yard, Only \$17,800. Call Jim Lormann, Realtor.

SHOPPING PLAZA
Includes 3 Bedroom, 1 Bath Home, Grocery, Hardware, Business, and 2 Other Stores. Plus an Extra Lot for Expansion. Good Location on Hwy. 431, Orange County. Call Roy Phillips, Associate.

DUPLIX
Casselberry Area, 2 Bedroom, 1 Bath Each Side, \$23,000. Both Sides Paved. Call Jim Lormann, Realtor.

WINTER SPRINGS
3 Bedroom, 1 Bath Home, Hobby Room, Workshop, Family Room, Very Well Kept. Call Irene Williams, Realtor.

250 S. Hwy. 17-92 838-1707 Casselberry, Fla.

TREES & SHRUBS PLANT NOW

ITALIAN CYPRESS	\$279	DWARF REDWOOD AZALEAS	\$169
PODOCARPUS	\$695	BLUE YASE JUNIPER	\$195
GREEN PITTOSPORUM	\$495	DWARF HOLLY	\$195

VIBURNUM \$199
BOXWOOD 89¢
MUMS \$295

ANNUALS 65¢
Master Charge — BankAmericard

SEMINOLE GARDEN CENTER
HWY. 17-92 — NORTH OF SR 434
PH. 838-8221 LONGWOOD

"Stenstrom's Showcase"

Country Club Manor 1 1/2 ACRES This 3 bedroom, 1 1/2 bath with paneled Florida room, fence and considerable well water. See this one today.	Lake Mary LAKE FRONT Here it is! Three bedrooms, 1 1/2 baths, on large lot with well, pump and boat house. \$37,500. Financing available.	Lake Mary LAKEFRONT PRIVILEGES See this 3 bedroom, 1 1/2 bath, concrete and brick construction on corner lot 17' x 144' with lakefront privileges. \$37,700.	Sanford 3 BIG BEDROOMS It's vacant! Move right in! Two baths, double garage, central heat and air on large lot. Completely fenced, almost completely furnished. \$37,000.
Paola ON 1/4 ACRES Here's a beautiful 3 bedroom, 2 bath, brick only 3 weeks old with a large citrus grove producing 1,500-2,000 boxes of fruit per year. This home has all the extras to make Florida living enjoyable. \$45,000.	Country 1 1/2 ACRES Here's the One you've read and heard about! You've seen it. Either a 4 or 5 bedroom, 2 bath, brick with a large lot, swimming pool, and a lot of extras to make Florida living enjoyable. \$45,000.	Mayfair SPACE—SPACE This one has 4 bedrooms, 2 full baths, a brand new heating and air conditioning system, and kitchen just completely redecorated and equipped. \$43,500.	Dreamworld REDUCED \$3,000 That's right! Move right in! Just reduced price on this beautiful 3 bedroom, 2 1/2 bath, brick home. Only \$42,000. Call today for more information.
Pinecrest HEATED POOL Here's your chance to buy one of this section's finest homes. We proudly present this 3 bedroom, 2 bath, with double garage, central heat and air, custom drapes, double glass grill, food lighted exterior and sprinkler system, among other features. \$43,000. Excellent condition. Financing available.	Wilson Place BEAUTY NOT SKIN DEEP This is the beauty of the area! With its interior and exterior appearance with its 3 bedrooms, 2 bath, brick, central heat and air, custom drapes, double glass grill, food lighted exterior and sprinkler system, among other features. \$43,000. Excellent condition. Financing available.	San Lanta FIVE BEDROOMS The finest in the area! Living can be yours with this beautiful, completely furnished 5 bedroom, 2 1/2 bath, brick home. Central heat and air, custom drapes, double glass grill, food lighted exterior and sprinkler system, among other features. \$43,000. Exclusive.	Wilson Place EXECUTIVE HOME After you see this 3 bedroom, 2 bath, with double garage, central heat and air on a lot 17' x 111' and special price of \$42,000, you'll almost be willing to pay an admission price to see it. This is a must see! Call today for more information.
Lake Harney COUNTRY LIVING! This is the best of a big house on a big lake for a big family. Main attraction is 4 bedrooms, 3 baths, formal dining room, Florida room, central heat and air, etc. You name it, this one has it. Even a pool. On 3 acres.	Twenty West READY FOR YOU! This 3 bedroom, 1 1/2 bath is loaded with extras. Includes central heat and air, double garage, formal dining room, Florida room, central heat and air, etc. You name it, this one has it. Even a pool. On 3 acres.	Grave Manor FOR THE BIG FAMILY Need 5 bedrooms? We've got it! Has 3 baths, Florida room, equipped kitchen and many, many extras to make living a pleasure. For the large family. \$43,500.	Country 3 BEDROOM COTTAGE On lot 100 x 145, this beautiful place can be yours for only \$35,500. If you can't wait, call today. This might be the one you've waited for.
Lake Mary ONE ACRE LOT Here's a 3 bedroom, 2 bath with formal dining room, Florida room with tiled floor, equipped with new refrigerator and built in oven and range, central heat and air, fireplace, and underground sprinkling system. Recently redecorated. \$40,000.	Country Club Manor SOLD This is the best of a big house on a big lake for a big family. Main attraction is 4 bedrooms, 3 baths, formal dining room, Florida room, central heat and air, etc. You name it, this one has it. Even a pool. On 3 acres.	Sunland EXCELLENT CONDITION This is the best of a big house on a big lake for a big family. Main attraction is 4 bedrooms, 3 baths, formal dining room, Florida room, central heat and air, etc. You name it, this one has it. Even a pool. On 3 acres.	Idylwild THE BEST Owner has just finished this pretty 3 bedroom, 2 bath home with 1 1/2 baths, double garage, central heat and air on a lot 100 x 145. This might be the one you've waited for.

STENSTROM REALTY
"Sanford's Sales Leader" REALTORS
322-2420 2565 PARK DRIVE

HOME OF

FROM \$200 DOWN
FHA & VA & FHA 235 FINANCING

Why pay rent when you may own a beautiful 3 bedroom, 1 1/2 bath, sparkling new home? Includes finished garage and utility room, thick wall to wall carpeting, central heating and much more. Select from several models located close to shopping with sidewalks and all city conveniences. Call us today!

\$18,600

323-1920 OR 831-8222

FURNISHED MODEL AT WOODMERE HOMES
2821 Sanford Avenue, Sanford

CLIFF JORDAN REALTOR
HWY. 17-92 - 1 BLOCK NORTH OF DOG TRACK ROAD

CHRISTMAS DREAMS COME TRUE

Deltona Homes
built by H & S Construction

MAKE THIS THE MERRIEST CHRISTMAS EVER FOR YOUR FAMILY..... IN A NEW HOME!

3 MODELS TO CHOOSE FROM..... NOW AWAITING YOUR INSPECTION!

OPEN DAILY 9 to 5 Sat & Sun 1 to 6

AQUARIUS
3 Bedroom, 2 Bath, Screened Porch, 2 Car Garage

GEMINI
3 Bedroom, 2 Bath, Family Room, Patio, 2 Car Garage

3 Models Priced From \$29,900

EACH MODEL OFFERS YOU
Central Heat & Air, Carpeting, 2 Tile Baths, Range, Garbage Disposal, Dishwasher, Patio, Insulated Side Walls & Ceiling, Plastered wall & ceiling, Colorcrete Exterior, 15-year guarantee, Landscaping, VA/FHA Conventional Financing, and NO CLOSING COSTS.

PRICED FROM \$29,900 plus lot

Roberts & Gilman, Inc.
Realtors
(904) 789-2122
Deltona Branch, Providence Plaza, Deltona

Lt. Calley Back in Court; Will Argue His Conviction

By HARRY F. ROSENTHAL
Associated Press Writer
WASHINGTON (AP) — After 20 months in prison, Lt. William L. Calley Jr., a new day in court Monday — a court that will not only be the sole bearer of the cross of My Lai so long as he lives.

The 28-year-old Calley, convicted of murdering at least 22 unarmored South Vietnamese, was back in court Monday. He will argue his conviction and 20-year sentence before the Army Court of Military Review.

"He carries with him not only his own guilt, but the guilt of killing the civilians," said a military lawyer in his 46-page appeal.

"He has already been punished. The fingers will point forever. He will never escape the public eye. Retribution is not, and should not be, the aim of our military system of justice."

In going before the Court of Military Review — the Army equivalent of a federal appeals court — Calley's lawyers claim there were 32 errors committed in Calley's 4½-month trial at Ft. Benning, Ga. last year.

One claims that his actions in

going before the Court of Military Review — the Army equivalent of a federal appeals court — Calley's lawyers claim there were 32 errors committed in Calley's 4½-month trial at Ft. Benning, Ga. last year.

One claims that his actions in

- 1 Being Transferred Within 90 Days? We Pay CASH FOR EQUITY IN YOUR HOME, NOW. You Move When Ready
- 2 Having Financial Problems? We Pay CASH FOR EQUITY IN YOUR HOME We Pay All Back Payments All Late Charges All Closing Costs!
- 3 If You Are Thinking Of Moving For Any Reason

WE PAY QUICK CASH FOR EQUITY IN HOMES!

ANY TYPE HOME ANY AREA
Personalized Service 9:00-11:00 - 7 Days

CALL COLLECT — NO OBLIGATION
COMBINED MORTGAGE CO.
P.O. Box 303, Casselberry, Fla. 32707
ORANGE—SEMINOLE—VOLUSIA—BREVARD
Bob Maddox
Call Collect (305) 834-6411

GET LOST...

In a way of life that you've been searching for but have never found... Get lost in the beautiful countryside of a uniquely designed and planned community... Get lost in the beauty of Hidden Lake.

- LAKES □ PARKS
- SWIMMING POOLS
- TENNIS COURTS
- GREENBELTS
- BICYCLE PATHS
- AND
- GRACIOUS NEW HOMES

3 and 4 Bedroom Homes From \$25,700

VA • FHA • CONVENTIONAL
• NO CLOSING COSTS •

All homes include Central Heating and Air Conditioning, Wall-to-Wall Carpeting, Dishwasher, Disposal and a Double Car Garage.



Hidden Lake

OPEN DAILY
BROKER CO-OP
WELCOME

CALL UNTIL NOON TO START OR CANCEL YOUR AD NEXT DAY.
SATURDAY 9:00 A.M. TO 12 NOON
SUNDAY 10:00 A.M. TO 12 NOON

1950 LEE RD. WINTER PARK
DICK BOND ASSOCIATES REALTOR
PHONE (305) 644-0810 ANYTIME

Sell With Herald Want Ads

WANT AD INFORMATION
Direct Phone Lines To Want Ads

Seminole 322-2611

Orlando 831-9993

The Longer Your Ad Runs The Less It Costs Per Line Per Day.

Rated For Consecutive Insertions — No Change Of Copy.

1 thru 2 times 37c a line
3 thru 24 times 32c a line
25 times 27c a line
26 thru 52 times 22c a line
53 thru 104 times 17c a line
(15.75 MINIMUM CHARGE)
3 Lines Minimum

CLASSIFICATIONS

Announcements
1—Lost & Found
2—Personals
3—Announcements
4—Cards of Thanks
5—In Memoriam
6—Business Opportunities
7—Instruction
8—Financial

Employment
13—Male Help Wanted
14—Female Help Wanted
15—Male Female Help Wanted
16—Situation Wanted
17—Domestic Child Care

Rentals
21—Rooms For Rent
22—Apartments Rent Unfurnished
23—Apartments Rent Furnished
24—House Rent Unfurnished
25—House Rent Furnished
26—Mobile Homes Rent
27—Resort Property For Rent
28—Business Property For Rent
29—Wanted To Rent

Real Estate For Sale
31—Houses For Sale
32—Farms & Groves
33—Lots & Acreage
34—Mobile Homes
35—Income & Investment Property
36—Business Property
37—Real Estate Wanted

Recreational
41—Bicycles
42—Boats and Marine Equipment
43—Camping Equipment
44—Sports Equipment

Merchandise
50—Garage - Rummage Sales
51—Auctions
52—Wanted To Buy
53—Swap And Trade
54—Equipment For Rent
55—Miscellaneous

14—Household Goods
56—Antiques
57—Musical Merchandise
58—Store And Office Equipment
59—Machinery And Tools
60—Building Materials
61—Lawn And Garden Equipment
62—Livestock And Poultry
63—Pets And Supplies
64—Clothing

Transportation
70—Travel Trainers
71—Auto Repairs Parts Accessories
72—Import Autos
73—Motorcycles And Scooters
74—Trucks And Trailers
75—Autos For Sale

Being Transferred Within 90 Days? We Pay CASH FOR EQUITY IN YOUR HOME, NOW. You Move When Ready

Having Financial Problems? We Pay CASH FOR EQUITY IN YOUR HOME We Pay All Back Payments All Late Charges All Closing Costs!

If You Are Thinking Of Moving For Any Reason

WE PAY QUICK CASH FOR EQUITY IN HOMES!

ANY TYPE HOME ANY AREA
Personalized Service 9:00-11:00 - 7 Days

CALL COLLECT — NO OBLIGATION
COMBINED MORTGAGE CO.
P.O. Box 303, Casselberry, Fla. 32707
ORANGE—SEMINOLE—VOLUSIA—BREVARD
Bob Maddox
Call Collect (305) 834-6411

GET LOST...

In a way of life that you've been searching for but have never found... Get lost in the beautiful countryside of a uniquely designed and planned community... Get lost in the beauty of Hidden Lake.

Hidden Lake is...

- LAKES □ PARKS
- SWIMMING POOLS
- TENNIS COURTS
- GREENBELTS
- BICYCLE PATHS
- AND
- GRACIOUS NEW HOMES

3 and 4 Bedroom Homes From \$25,700

VA • FHA • CONVENTIONAL
• NO CLOSING COSTS •

All homes include Central Heating and Air Conditioning, Wall-to-Wall Carpeting, Dishwasher, Disposal and a Double Car Garage.

Hidden Lake

OPEN DAILY
BROKER CO-OP
WELCOME

CALL UNTIL NOON TO START OR CANCEL YOUR AD NEXT DAY.
SATURDAY 9:00 A.M. TO 12 NOON
SUNDAY 10:00 A.M. TO 12 NOON

1950 LEE RD. WINTER PARK
DICK BOND ASSOCIATES REALTOR
PHONE (305) 644-0810 ANYTIME

The Herald Sunday Want Ads — Great For Bargain Hunting

THE BORN LOSER

By Art Sansom

Waiting for it to show!

54 Houses Rent
Deltona: 1 bedroom unfurnished, corner lot, nice lawn, \$150 mo. Security, 775-2734.

1510 Elliott St. 2 bedrooms, kitchen equipped, refrigerator, \$190. 299-4379, 2 bedrooms, after 5 weekdays, \$190. 299-4379.

Lake Mary - 3 bedrooms, 2 baths, central air, heat, family and dining room, \$210. 322-5130, 130 Seminole, realty, inc. 831-1330, 322-5467.

25 Houses Rent Furnished
Two bedroom furnished house, Lake Mary, 322-2744.

26 Mobile Homes Rent
1 bedroom mobile home, no alcoholic beverages and no pets, 322-4470.

28 Business Property For Rent
Warehouse or shop in NEW 1/4 INDUSTRIAL PARK, 40 acres & Hickman Dr. 20,000 sq. ft. 5000 sq. ft. insulated, 20 ft. waves, sewer, water, paved parking, reasonable at \$8.50. H. Omer, 831-7375.

31 Houses For Sale
BROKERS
The Time Tested Firm
120 N. Park Ave.
Lakeland, FL 32802
Lakeland 322-2552, 322-5424

235 HOMES...
Pick your own color on new 235 homes - Airport rd. to ACADNEY MANOR. Equal Housing opportunity. Model Realtors, 444-3013.

30 Garage-Rummage Sales
Old car, wicker and so forth. Some like new 1999. Sale starts 10 a.m. Saturday, 410 Oak Avenue, 322-2939 evenings.

55 Miscellaneous For Sale
Zigler space heater with blower, like new, 100 gal. tank, brand new, xerox/mile. Call 322-4422 Day, 322-2939 evenings.

55A Household Goods
TELEVISION SETS 325 UP TO 2619 ORLANDO, 322-5332

53 Miscellaneous For Sale
Zigler space heater with blower, like new, 100 gal. tank, brand new, xerox/mile. Call 322-4422 Day, 322-2939 evenings.

55A Household Goods
TELEVISION SETS 325 UP TO 2619 ORLANDO, 322-5332

54 Equipment For Rent
RENT A BED ROOM, BATH, CARROLL'S FURNITURE 114W. 1st St. 322-5181

55 Miscellaneous For Sale
Tangels, Tangerines and Grapefruit, \$2.00 per container, 322-5181.

56 Miscellaneous For Sale
Tangels, Tangerines and Grapefruit, \$2.00 per container, 322-5181.

55A Household Goods
TELEVISION SETS 325 UP TO 2619 ORLANDO, 322-5332

The Herald Sunday Want Ads — Great For Bargain Hunting

71 Auto Repairs Parts Accessories
M & M AUTO PARTS, Hwy. 44, Sanford, 322-9063

75 Autos For Sale
1967 Chevrolet V-8, 389 engine, radio, heater, 3 speed, red, excellent condition, just \$750. SHELLY'S USED CARS, 322-7940.

73 Motorcycles And Scooters
1970 Honda 650, excellent condition, windshield, very nice. Call 648-6971.

75 Autos For Sale
1967 Chevrolet V-8, 389 engine, radio, heater, 3 speed, red, excellent condition, just \$750. SHELLY'S USED CARS, 322-7940.

59 Machinery And Tools
198 Tractor and farm equipment. Good running condition & rubber. Call 323-2626.

62 Livestock And Poultry
Palomino mare, good disposition, good coloration, \$200. 322-9113 after 1.

55A Household Goods
TELEVISION SETS 325 UP TO 2619 ORLANDO, 322-5332

55A Household Goods
TELEVISION SETS 325 UP TO 2619 ORLANDO, 322-5332

54 Equipment For Rent
RENT A BED ROOM, BATH, CARROLL'S FURNITURE 114W. 1st St. 322-5181

55 Miscellaneous For Sale
Tangels, Tangerines and Grapefruit, \$2.00 per container, 322-5181.

56 Miscellaneous For Sale
Tangels, Tangerines and Grapefruit, \$2.00 per container, 322-5181.

55A Household Goods
TELEVISION SETS 325 UP TO 2619 ORLANDO, 322-5332

54 Equipment For Rent
RENT A BED ROOM, BATH, CARROLL'S FURNITURE 114W. 1st St. 322-5181

55 Miscellaneous For Sale
Tangels, Tangerines and Grapefruit, \$2.00 per container, 322-5181.

56 Miscellaneous For Sale
Tangels, Tangerines and Grapefruit, \$2.00 per container, 322-5181.

55A Household Goods
TELEVISION SETS 325 UP TO 2619 ORLANDO, 322-5332

Get In On All The Action!

JOIN THE SHOPPER'S GUIDE... THE HERALD'S DAILY DIRECTORY OF BUSINESS SERVICES.

6 Days \$5.88 25 Days 13 Wks. Dial 322-2411 or 831-9993
3 line Ad—\$5.88 \$19.14 \$54.60
4 line Ad—7.84 25.52 72.80
5 line Ad—9.80 31.90 91.00

EXECUTIVE SECRETARY

We currently have an opening for an executive secretary to join us in our modern office. Qualifications include a minimum of two (2) years of secretarial experience with the ability to type at approximately 60 wpm and take dictation at 80 wpm. If you have these qualifications and would like to be a member of a growing organization, then please apply in person to:

Brunswick Corporation
2000 Brunswick Lane
DeLand
(Just west of the DeLand Airport)
An equal opportunity employer

THE SHOPPERS GUIDE

FOR EVERYONE!

The following businesses are listed for your convenience. Permanent residents and newcomers will find this directory the most convenient and up-to-date way to solve every problem.

Home Improvement

GILMARTIN & SMITH PAINTING & REPAIR WORK. Free Estimates. 322-3622

KITCHEN & BATH REMODELING. wallpaper, tile and cabinet work. 322-1660

SEMINOLE IRRIGATION CO. Custom Design and Installation. Free Estimates. 831-3195

Pet Care

ANNUAL HEALTH BOARDING. KENNELS. ALSO PET SUPPLIES. Free Estimates. 322-3252

SMART SANTA'S. Give your great gift ideas by checking Yuletide Gift Guide in today's Classified section.

Sewing

We repair all makes & models. KINGDON'S SEWING CENTER. 210 E. 1st St. Sanford, FL. 322-2725

Shoe Repair

SUPER SHOE REPAIR. Under New Management. Sanford Plaza. 322-8228

Back Ho Service

Ditching, Loading & Trucking. 834-3302

Air's Lawn Service. mowing, edging, weeding, trim, tree trimming. Free estimates. 834-3302

Trailer Trailers

Bill Burns, BP Service. 2500 S. French Ave. 322-3636

Well Drilling

WELLS DRILLED PUMPS. SPINKLER SYSTEMS. All types and sizes. We repair and service STING MACHINES & SUPPLY CO. 322-2411

DICK JOYCE WELL DRILLING. 3" and larger, pumps, water. water conditions. 322-6470

RENT TO BUY

We credit money to you when you purchase your new furniture. You will pay less than the store price. We will help you with the financing. Low weekly payments.

Dyer's

1801 S. HWY 179, Maitland 441-6411

Autos For Sale

1967 Chevrolet V-8, 389 engine, radio, heater, 3 speed, red, excellent condition, just \$750. SHELLY'S USED CARS, 322-7940.

1971 Plymouth Satellite, 318 cu. in. automatic, air. Call 323-4929 after 5.

1968 Vauxhall Viva, 1.1 liter, 1100 cc. 322-9113

1971 Volkswagen Super Beetle, air, A.M.F.M. local. A 1 condition. By owner. Call 322-1775 after 5.

1971 Mercury Capri, red, 4 speed, air conditioned, like new. 323-6599

1970 Chevrolet Station Wagon, Tuxedo, 8 passenger, automatic, air, power steering, power windows, 1100 cc. 322-8814

1971 Volkswagen Super Beetle, air, A.M.F.M. local. A 1 condition. By owner. Call 322-1775 after 5.

1971 Mercury Capri, red, 4 speed, air conditioned, like new. 323-6599

1970 Chevrolet Station Wagon, Tuxedo, 8 passenger, automatic, air, power steering, power windows, 1100 cc. 322-8814

1971 Volkswagen Super Beetle, air, A.M.F.M. local. A 1 condition. By owner. Call 322-1775 after 5.

1971 Mercury Capri, red, 4 speed, air conditioned, like new. 323-6599

Autos For Sale

1967 Chevrolet V-8, 389 engine, radio, heater, 3 speed, red, excellent condition, just \$750. SHELLY'S USED CARS, 322-7940.

1971 Plymouth Satellite, 318 cu. in. automatic, air. Call 323-4929 after 5.

1968 Vauxhall Viva, 1.1 liter, 1100 cc. 322-9113

1971 Volkswagen Super Beetle, air, A.M.F.M. local. A 1 condition. By owner. Call 322-1775 after 5.

1971 Mercury Capri, red, 4 speed, air conditioned, like new. 323-6599

1970 Chevrolet Station Wagon, Tuxedo, 8 passenger, automatic, air, power steering, power windows, 1100 cc. 322-8814

1971 Volkswagen Super Beetle, air, A.M.F.M. local. A 1 condition. By owner. Call 322-1775 after 5.

1971 Mercury Capri, red, 4 speed, air conditioned, like new. 323-6599

1970 Chevrolet Station Wagon, Tuxedo, 8 passenger, automatic, air, power steering, power windows, 1100 cc. 322-8814

1971 Volkswagen Super Beetle, air, A.M.F.M. local. A 1 condition. By owner. Call 322-1775 after 5.

1971 Mercury Capri, red, 4 speed, air conditioned, like new. 323-6599

Autos For Sale

1967 Chevrolet V-8, 389 engine, radio, heater, 3 speed, red, excellent condition, just \$750. SHELLY'S USED CARS, 322-7940.

1971 Plymouth Satellite, 318 cu. in. automatic, air. Call 323-4929 after 5.

1968 Vauxhall Viva, 1.1 liter, 1100 cc. 322-9113

1971 Volkswagen Super Beetle, air, A.M.F.M. local. A 1 condition. By owner. Call 322-1775 after 5.

1971 Mercury Capri, red, 4 speed, air conditioned, like new. 323-6599

1970 Chevrolet Station Wagon, Tuxedo, 8 passenger, automatic, air, power steering, power windows, 1100 cc. 322-8814

1971 Volkswagen Super Beetle, air, A.M.F.M. local. A 1 condition. By owner. Call 322-1775 after 5.

1971 Mercury Capri, red, 4 speed, air conditioned, like new. 323-6599

1970 Chevrolet Station Wagon, Tuxedo, 8 passenger, automatic, air, power steering, power windows, 1100 cc. 322-8814

1971 Volkswagen Super Beetle, air, A.M.F.M. local. A 1 condition. By owner. Call 322-1775 after 5.

1971 Mercury Capri, red, 4 speed, air conditioned, like new. 323-6599

Autos For Sale

1967 Chevrolet V-8, 389 engine, radio, heater, 3 speed, red, excellent condition, just \$750. SHELLY'S USED CARS, 322-7940.

1971 Plymouth Satellite, 318 cu. in. automatic, air. Call 323-4929 after 5.

1968 Vauxhall Viva, 1.1 liter, 1100 cc. 322-9113

1971 Volkswagen Super Beetle, air, A.M.F.M. local. A 1 condition. By owner. Call 322-1775 after 5.

1971 Mercury Capri, red, 4 speed, air conditioned, like new. 323-6599

1970 Chevrolet Station Wagon, Tuxedo, 8 passenger, automatic, air, power steering, power windows, 1100 cc. 322-8814

1971 Volkswagen Super Beetle, air, A.M.F.M. local. A 1 condition. By owner. Call 322-1775 after 5.

1971 Mercury Capri, red, 4 speed, air conditioned, like new. 323-6599

1970 Chevrolet Station Wagon, Tuxedo, 8 passenger, automatic, air, power steering, power windows, 1100 cc. 322-8814

1971 Volkswagen Super Beetle, air, A.M.F.M. local. A 1 condition. By owner. Call 322-1775 after 5.

1971 Mercury Capri, red, 4 speed, air conditioned, like new. 323-6599

Autos For Sale

1967 Chevrolet V-8, 389 engine, radio, heater, 3 speed, red, excellent condition, just \$750. SHELLY'S USED CARS, 322-7940.

1971 Plymouth Satellite, 318 cu. in. automatic, air. Call 323-4929 after 5.

1968 Vauxhall Viva, 1.1 liter, 1100 cc. 322-9113

1971 Volkswagen Super Beetle, air, A.M.F.M. local. A 1 condition. By owner. Call 322-1775 after 5.

1971 Mercury Capri, red, 4 speed, air conditioned, like new. 323-6599

1970 Chevrolet Station Wagon, Tuxedo, 8 passenger, automatic, air, power steering, power windows, 1100 cc. 322-8814

1971 Volkswagen Super Beetle, air, A.M.F.M. local. A 1 condition. By owner. Call 322-1775 after 5.

1971 Mercury Capri, red, 4 speed, air conditioned, like new. 323-6599

1970 Chevrolet Station Wagon, Tuxedo, 8 passenger, automatic, air, power steering, power windows, 1100 cc. 322-8814

1971 Volkswagen Super Beetle, air, A.M.F.M. local. A 1 condition. By owner. Call 322-1775 after 5.

1971 Mercury Capri, red, 4 speed, air conditioned, like new. 323-6599

Autos For Sale

1967 Chevrolet V-8, 389 engine, radio, heater, 3 speed, red, excellent condition, just \$750. SHELLY'S USED CARS, 322-7940.

1971 Plymouth Satellite, 318 cu. in. automatic, air. Call 323-4929 after 5.

1968 Vauxhall Viva, 1.1 liter, 1100 cc. 322-9113

1971 Volkswagen Super Beetle, air, A.M.F.M. local. A 1 condition. By owner. Call 322-1775 after 5.

1971 Mercury Capri, red, 4 speed, air conditioned, like new. 323-6599

1970 Chevrolet Station Wagon, Tuxedo, 8 passenger, automatic, air, power steering, power windows, 1100 cc. 322-8814

1971 Volkswagen Super Beetle, air, A.M.F.M. local. A 1 condition. By owner. Call 322-1775 after 5.

1971 Mercury Capri, red, 4 speed, air conditioned, like new. 323-6599

1970 Chevrolet Station Wagon, Tuxedo, 8 passenger, automatic, air, power steering, power windows, 1100 cc. 322-8814

1971 Volkswagen Super Beetle, air, A.M.F.M. local. A 1 condition. By owner. Call 322-1775 after 5.

1971 Mercury Capri, red, 4 speed, air conditioned, like new. 323-6599

Autos For Sale

1967 Chevrolet V-8, 389 engine, radio, heater, 3 speed, red, excellent condition, just \$750. SHELLY'S USED CARS, 322-7940.

1971 Plymouth Satellite, 318 cu. in. automatic, air. Call 323-4929 after 5.

1968 Vauxhall Viva, 1.1 liter, 1100 cc. 322-9113

1971 Volkswagen Super Beetle, air, A.M.F.M. local. A 1 condition. By owner. Call 322-1775 after 5.

1971 Mercury Capri, red, 4 speed, air conditioned, like new. 323-6599

1970 Chevrolet Station Wagon, Tuxedo, 8 passenger, automatic, air, power steering, power windows, 1100 cc. 322-8814

1971 Volkswagen Super Beetle, air, A.M.F.M. local. A 1 condition. By owner. Call 322-1775 after 5.

1971 Mercury Capri, red, 4 speed, air conditioned, like new. 323-6599

1970 Chevrolet Station Wagon, Tuxedo, 8 passenger, automatic, air, power steering, power windows, 1100 cc. 322-8814

1971 Volkswagen Super Beetle, air, A.M.F.M. local. A 1 condition. By owner. Call 322-1775 after 5.

1971 Mercury Capri, red, 4 speed, air conditioned, like new. 323-6599

Autos For Sale

1967 Chevrolet V-8, 389 engine, radio, heater, 3 speed, red, excellent condition, just \$750. SHELLY'S USED CARS, 322-7940.

1971 Plymouth Satellite, 318 cu. in. automatic, air. Call 323-4929 after 5.

1968 Vauxhall Viva, 1.1 liter, 1100 cc. 322-9113

1971 Volkswagen Super Beetle, air, A.M.F.M. local. A 1 condition. By owner. Call 322-1775 after 5.

1971 Mercury Capri, red, 4 speed, air conditioned, like new. 323-6599

1970 Chevrolet Station Wagon, Tuxedo, 8 passenger, automatic, air, power steering, power windows, 1100 cc. 322-8814

1971 Volkswagen Super Beetle, air, A.M.F.M. local. A 1 condition. By owner. Call 322-1775 after 5.

1971 Mercury Capri, red, 4 speed, air conditioned, like new. 323-6599

1970 Chevrolet Station Wagon, Tuxedo, 8 passenger, automatic, air, power steering, power windows, 1100 cc. 322-8814

1971 Volkswagen Super Beetle, air, A.M.F.M. local. A 1 condition. By owner. Call 322-1775 after 5.

1971 Mercury Capri, red, 4 speed, air conditioned, like new. 323-6599

Autos For Sale

1967 Chevrolet V-8, 389 engine, radio, heater, 3 speed, red, excellent condition, just \$750. SHELLY'S USED CARS, 322-7940.

1971 Plymouth Satellite, 318 cu. in. automatic, air. Call 323-4929 after 5.

1968 Vauxhall Viva, 1.1 liter, 1100 cc. 322-9113

1971 Volkswagen Super Beetle, air, A.M.F.M. local. A 1 condition. By owner. Call 322-1775 after 5.

1971 Mercury Capri, red, 4 speed, air conditioned, like new. 323-6599

1970 Chevrolet Station Wagon, Tuxedo, 8 passenger, automatic, air, power steering, power windows, 1100 cc. 322-8814

1971 Volkswagen Super Beetle, air, A.M.F.M. local. A 1 condition. By owner. Call 322-1775 after 5.

1971 Mercury Capri, red, 4 speed, air conditioned, like new. 323-6599

1970 Chevrolet Station Wagon, Tuxedo, 8 passenger, automatic, air, power steering, power windows, 1100 cc. 322-8814

1971 Volkswagen Super Beetle, air, A.M.F.M. local. A 1 condition. By owner. Call 322-1775 after 5.

1971 Mercury Capri, red, 4 speed, air conditioned, like new. 323-6599

Autos For Sale

1967 Chevrolet V-8, 389 engine, radio, heater, 3 speed, red, excellent condition, just \$750. SHELLY'S USED CARS, 322-7940.

1971 Plymouth Satellite, 318 cu. in. automatic, air. Call 323-4929 after 5.

1968 Vauxhall Viva, 1.1 liter, 1100 cc. 322-9113

1971 Volkswagen Super Beetle, air, A.M.F.M. local. A 1 condition. By owner. Call 322-1775 after 5.

1971 Mercury Capri, red, 4 speed, air conditioned, like new. 323-6599

1970 Chevrolet Station Wagon, Tuxedo, 8 passenger, automatic, air, power steering, power windows, 1100 cc. 322-8814

1971 Volkswagen Super Beetle, air, A.M.F.M. local. A 1 condition. By owner. Call 322-1775 after 5.

1971 Mercury Capri, red, 4 speed, air conditioned, like new. 323-6599

1970 Chevrolet Station Wagon, Tuxedo, 8 passenger, automatic, air, power steering, power windows, 1100 cc. 322-8814

1971 Volkswagen Super Beetle, air, A.M.F.M. local. A 1 condition. By owner. Call 322-1775 after 5.

1971 Mercury Capri, red, 4 speed, air conditioned, like new. 323-6599

Autos For Sale

1967 Chevrolet V-8, 389 engine, radio, heater, 3 speed, red, excellent condition, just \$750. SHELLY'S USED CARS, 322-7940.

1971 Plymouth Satellite, 318 cu. in. automatic, air. Call 323-4929 after 5.

1968 Vauxhall Viva, 1.1 liter, 1100 cc. 322-9113

1971 Volkswagen Super Beetle, air, A.M.F.M. local. A 1 condition. By owner. Call 322-1775 after 5.

1971 Mercury Capri, red, 4 speed, air conditioned, like new. 323-6599

1970 Chevrolet Station Wagon, Tuxedo, 8 passenger, automatic, air, power steering, power windows, 1100 cc. 322-8814

1971 Volkswagen Super Beetle, air, A.M.F.M. local. A 1 condition. By owner. Call 322-1775 after 5.

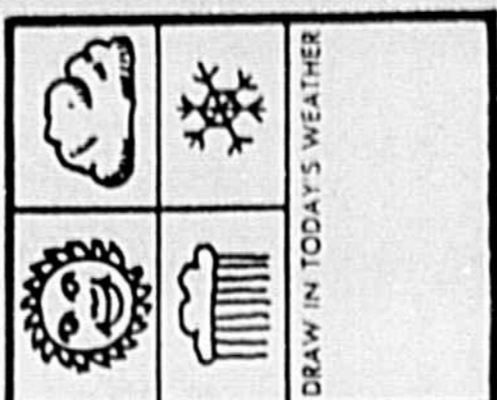
1971 Mercury Capri, red, 4 speed, air conditioned, like new. 323-6599

1970 Chevrolet Station Wagon, Tuxedo, 8 passenger, automatic, air, power steering, power windows, 1100 cc. 322-8814

1971 Volkswagen Super Beetle, air, A.M.F.M. local. A 1 condition. By owner. Call 322-1775 after 5.

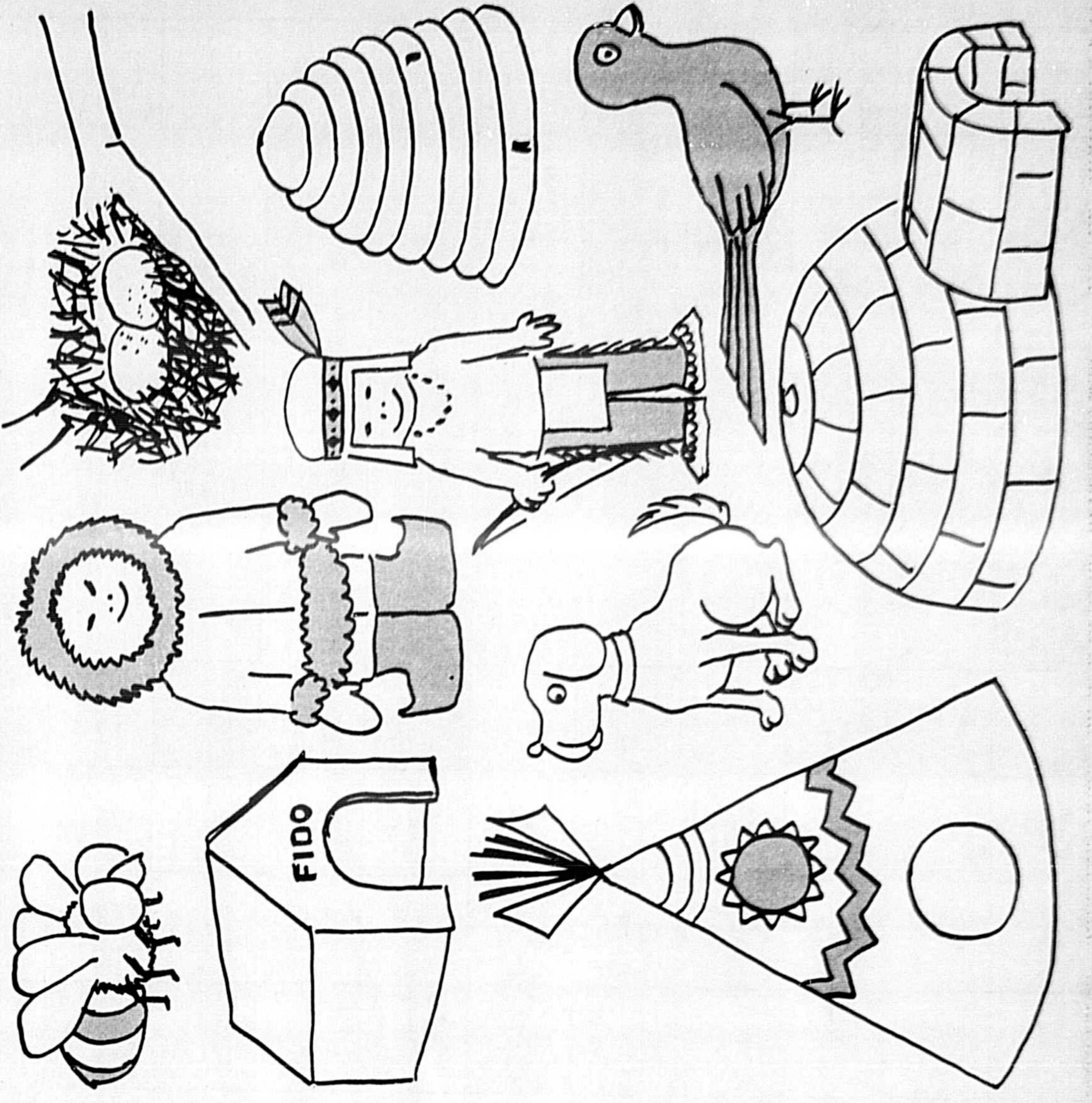
1971 Mercury Capri, red, 4 speed, air conditioned, like new. 323-6599

<



DRAW IN TODAY'S WEATHER... This paper belongs to...

Who Lives Where?



Santa Claus Known By Many Names

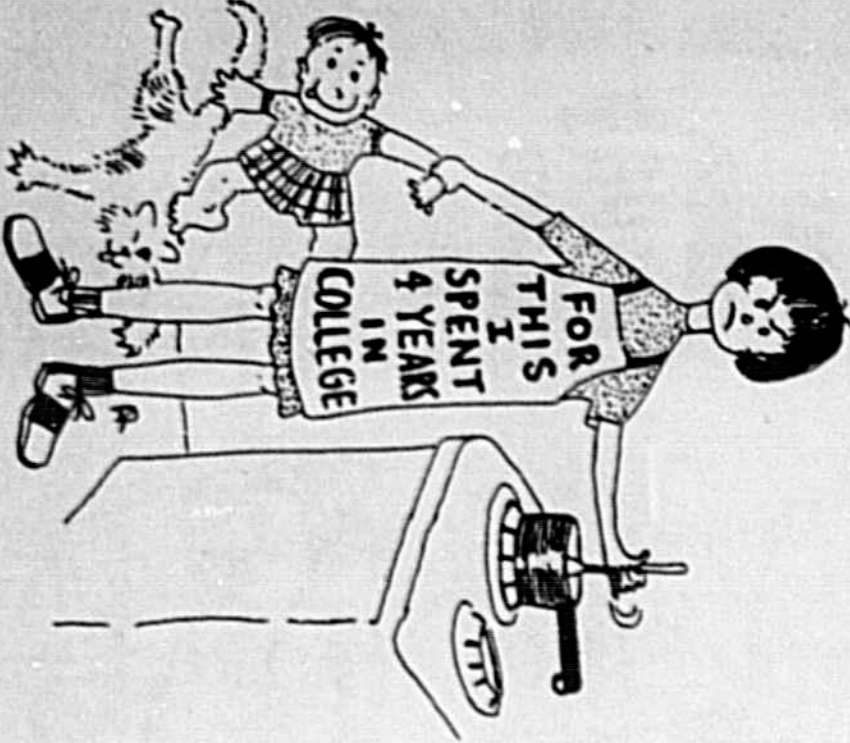
Throughout the world the jolly old elf means joy and happiness, whatever the name.



SANTA VISITING SEMINOLE... Christmas only three weeks away

Wives Have No Reason To Complain About Job

By ANN RUDY... I had hoped she might have been a housewife...



It's a challenge—her job.

Keep Criticism Constructive

Practically every citizen ever has suffered public criticism... Constructive criticism is the key...



The Great Seal (left), the Kennedy reverse (center) and the seal of the President.

MONEY CLIPS

By MORT REED... However, these laws do not specifically prohibit the use of money clips...

EVERYDAY NUMBERS... MINNESOTA — The Gopher State... The U.S.A. State by State... Includes illustrations of a rabbit, a dog, a hand, and a horse.

BOOK REVIEWS

Swedish Mystery Flavorful... The 'ADMONISHABLE MAN'... 'The Abominable Man'...

Television Movies On Tap

SINAVY... 'Battle of the Coral Sea'... 'The Old Chicago'... 'The Wild Heart'... 'The Burning Hills'...

Put Your Advertisement Where It Will Work For You... THE SWINOLE WINI... THE SANFORD HERALD... Call 322-2611

