

# THE HERALD BUSINESS REVIEW

FOR ADVERTISING INFORMATION ABOUT THIS PAGE CALL THE SANFORD HERALD 425-5938

### BUY — SELL — TRADE — LOANS

## LONGWOOD PAWN SHOP

### GUNS

Licensed Pawn Broker  
Beverly Roberts  
301 E. Highway 17-92  
Longwood, Florida

### WATCH CLEANING SPECIAL

cleaned—oiled—adjusted  
We Accept BankAmericards

Timex . . . \$3.50  
JEWEL MOVEMENT . . . \$6.50

Rings Cleaned — No Charge

BEN A. SMITLEY — CASH & SAVE JEWELERS  
318 LONGWOOD PLAZA (17-92) PH. 831-2285

### Central Heating

AND  
Air Conditioning

Sales • Service • Contracting

## LOU TEMPLE

REFRIGERATION

2404 MOQUOIS AVE. PH. 322-8812

### FREIGHT DAMAGED FURNITURE

1/2 OFF OR BETTER

## NOLL'S

FREIGHT DAMAGED FURNITURE SALES

HWY. 17-92 CASSELLBERRY

### SUMMER'S COMING

Let us have everything ready for you

Our new IMPROVED SERVICE is the BEST around. TRY US.

## SANFORD BOAT WORKS

HWY. 415 at Ocean Bridge 322-6613

## BUZZ'S

Photographic Services  
Box 169 Sanford, Fla.

PH. 322-2867 PH. 322-2449

COLOR AND BLACK & WHITE

Portraits Weddings Group

1. D. Pictures Slides Industrial Copying

Studio and Office, 1217 S. Park Ave.

## SANFORD MANOR

PH. 322-4707  
919 E. Second St., Sanford

## MANOR DeBARY

PH. 648-4426  
Hwy. 17-92, DeBarry

NURSING, CONVALESCENT AND REHABILITATION CENTERS

Partners in GOOD Patient Care

Medicare Approved

Also at DeBarry

LAKESIDE DUPLEX APARTMENTS

FOR RETIREMENT LIVING WITH EMERGENCY NURSE CALL SYSTEM

## WES-KAY WASHETERIAS

2010 FRENCH AVE. 111 WEST 27th ST.

### SANFORD'S ONLY

AIR CONDITIONED COIN LAUNDRIES WITH

15c SINGLE LOAD WASHERS (YOU PAY 25c ANYWHERE ELSE)

25c DOUBLE LOAD WASHERS (YOU PAY 35c ANYWHERE ELSE)

?? WHY PAY MORE ??

## Let Lou Temple Cool You

### Your York Dealer



## LOU TEMPLE

### REFRIGERATION AIR CONDITIONING

PH. 322-8812

Why do more area residents call on Lou Temple for air conditioning and refrigeration service? Experience would have to be one of the reasons. Lou has been repairing and servicing air conditioning along with refrigeration equipment for the past 18 years. The genial Temple also specializes in commercial sales, installation and repair of the air conditioning and refrigeration equipment.

Hot weather is here, take for instance last week when the temperatures neared the 100 degree mark. What if your air conditioner had failed? That's a simple question, you would have called Lou at 322-8812. Temple carries all needed equipment to repair and service your conditioner on his truck.

Lou is also your local York air conditioning dealer, one of the top names in the air conditioning field. Lou specializes in selling and installing central air conditioning and heating systems especially the large commercial units.

All of the latest equipment ranging from electronic detectors to the smallest halide torch are handled by Lou. The Sanford business also sells ice machines, water coolers and commercial refrigeration. "If there's a piece of equipment made to get cold (with the exception of ammonia systems)," Lou stated, "we have it or we can get it."

Temple holds service contracts with many of the local banks and dairies. He has installed many milk cooling tanks and walk-in coolers. Recently Lou installed heating and air conditioning systems at both the Longwood Church of the Nazarene and Sanford Christian Church on Church Road.

The Lou Temple name is well known throughout the entire Seminole area for quality and service with a smile. When that summer heat starts to get you down because you don't have an air conditioner, call Lou. York equipment will make it cool for you and Lou will make you feel just like you are in Alaska. Cool man, cool.

### Champagne Hustlers

DETROIT (AP) — Carol Zaccarelli of Detroit said Sunday "It's the happiest girl in the world" after hustling 440 yards with four glasses of champagne. Carol beat all the other waitresses in the 18th annual Waiters and Waitresses Race at Detroit, but it was waiter Robby Naubush who claimed most of the glory with a world record time of three minutes, 28 seconds for the event. Naubush topped the old record by 12 seconds.

### PAT and PAM

By Everett Harper



MEMPHILL

2465 S. Park Sanford

### The finest service on the finest Cars.

We Care About You . . . We Care About Your Car.

PONTIAC  
BUICK  
OLDSMOBILE  
FORD

1501 W. First—Sanford  
Phone 322-4231 or 425-2343

### BUILDING CONTRACTOR REAL ESTATE BROKER

## Johnny Walkey

2618 COUNTRY CLUB RD. SANFORD, FLORIDA  
TEL. 322-4457

### BRASS ITEMS BOUGHT AND SOLD

### Brass Polishing

Andrews, Fireplaces, Screens, Etc.

Kerosene lamp replacements, shades, etc.

Repairs  
Conversion to Electricity  
METAL FINISHING

322-1415  
127 Lake St. Longwood

### RIBBON—VELVET—SATIN—GROSGRAIN

### SMALL ARTIFICIAL FLOWERS—GROSGRAIN KNITTING INSTRUCTIONS.

Blocked Veils—Custom Designed  
Decorated Handbags and Sweeters  
All Colors and Kinds of Top Quality Yarn

—HOURS—  
Mon. thru Sat. — 9:30-5:00 p.m.

## ELAINE'S DESIGNER TRIMS

Longwood Plaza Hwy. 17-92 831-2883

### Furniture Stripping

We remove the old finish and keep the mess . . . You apply the new.

## Bix Service Company

PH. 831-2888  
541 HIGHWAY 17-92 FEEN PARK, FLA.

### "I've got news for you"

The Allstate group can provide for just about all your insurance needs. That means I can help you reduce and high costs out of Life, Health, Homeowners, Business and Auto Insurance. Why not give me a call!

JOHN HAMILTON  
Phone: 322-7061

## Allstate

Allstate Insurance Companies  
Northbrook, Illinois

## KOAN SEPTIC TANK

MFG.—INSTALLATION

PH. 322-9462

Approved by  
Seminole County Health Department

### HUNTING FOR BUSINESS?

## NEW VAC-MULCH

Yazzo's newest mower for all seasons. Vacuum action lifts leaves and clippings into 4 bushel capacity bag as you mow. You must see this mower in action to appreciate its many fine qualities!

\* 5 H.P. Briggs & Stratton engine \* 14" Heavy duty cycle type tires \* Sealed ball bearings \* One piece welded frame \* Cast alloy blade housing \* Belt driven \* Automatic brake when disengaged.

The mower with all the built in safety features.

You Can't Miss — It's Open Season . . . ADVERTISE IN THE SANFORD HERALD

For Ad and Feature Story on this page . . . CALL 322-2611 or 425-5938

### GENERAL INSURANCE

For Senior Drivers  
Teen Age Drivers  
Homeowners Policies  
Low Value Dwellings  
Mobile Homes  
Campers & Trailers  
Boats & Kickers  
Commercial Lines  
Workmen's Compensation

We provide all kinds of insurance at competitive rates.

## Ball Realty & Insurance

101-C W. 1st St. 322-6641

# The Sanford Herald

Wednesday, June 25, 1969 — Sanford Florida 32771  
61st Year, No. 225 Price 10 Cents

## Seminole Is Worth \$408,745,050

By DONNA ESTES

Total real and personal property in Seminole County is now worth \$408,745,050, S. O. Dorminey, tax assessor, reports.

Dorminey told The Herald the total taxable value of both real and personal properties in the county has risen by \$17,189,138 to the all-time high of \$270,071,065.

With the increases in land value, the county will have some \$108,307 in additional revenues at the same millage as last year. Of this amount, some \$103,267 can be budgeted. Meanwhile, with the increases the School Board, if it used the same millage as last year, would receive an additional \$222,943 of which it could budget \$211,796.

County Commission Chairman John Alexander indicated today a millage increase may be in the offing from the county. He said departmental budgets, currently being rechecked, indexed and compiled have many increased requests. In addition, new programs will be considered by the Commission, during budget hearings to begin next week, including juvenile detention facilities, proper program for retention of mental incompetents, food stamp or surplus commodities for low-income families and hiring of an administrative assistant to the Board of County Commissioners.

## WEDNESDAY Headlines

Inside THE HERALD

World News

Czechoslovak students who challenged Soviet tanks are now the "enemy" of their government. (Page 1B)

Perry's President announces that government will nationalize all major landholdings in country. (Page 6A)

### Around The Nation

Housewives pay a nickel of each dollar to the shopkeeper for his losses due to crime. (Page 1B)

Federal government is putting final touches on a new smoking-health report. (Page 1B)

Charleston women are being clipped — literally bald. (Page 6A)

What harvest . . . what more could a college girl want? (Page 1B)

### Sports World

Will there be a Frazier-Clay confrontation? (Page 3B)

Something new's been added to Dayton's race schedule . . . a golf cart grand prix. (Page 2B)

### Statewide

Kirk vows to unseat Cabinet Democrats. (Page 6A)

PHP gives reprieve to owner of motorized wheelchair. (Page 5A)

### Local Happenings

Roumillat delays leaving port authority to Oct. 1st. (Page 2A)

Petrie resigns as President of the Seminole Community Action Inc. (Page 2A)

### Index

Area deaths	2A	Editorial page	4A
Bridge	6B	Entertainment	7B
Calendar	2A	Horoscope	6B
Classified ads	7A	Hospital notes	6B
Comics	6B/7B	Society	6B/5B
Crossword puzzle	7B	Sports	2B/3B
Dear Abby	6B	Tv	7B

# Welcome To Sanford . . . Governor Claude R. Kirk

By STAFFORD DERBY

Our welcome to Gov. Claude R. Kirk, Jr., today is, at least, two-fold.

In his official capacity as Chief Executive of our beloved Sunshine State he is establishing an annual "Sanford Governor Appreciation Day."



But the welcome has much more of a personal and intimate flavor than this creation of a "day" in which the governor of Florida and one of the most lovely and growing areas can get acquainted.

To almost everyone in Sanford, Claude R. Kirk, Jr., the ebullient Republican is known only through his official acts, his signature on official documents and through the medium of "spokesmen."

Now comes a long overdue opportunity for the personality and the charm and the frankness which are characteristic of the Kirk, to be fleshed out with the smile, the handshake, the quick and often witty retort which Sanford-Seminole leaders need to experience.

It is a welcome which also partakes of the very nature of our honored guest. It is a "first" as it was 21 years ago that the last gubernatorial visit was a paid Sanford.

Furthermore, and most happily, it is also a day when our governor will have an opportunity to look over a region which has every qualification to fit into the Kirk effective Republican drive for attracting industries and people to Florida.

It is quite appropriate that the governor's arrival should be at the Sanford Airport, with its as yet unrealized opportunities to boost our community with effective airport operations.

And it is even more appropriate that the private dinner expressing our welcome will be held on the Sanford-constructed marina location.

None of this will be lost on the trained ability of our guests in sipping up situations and deducing from them what is needed to be done to improve and expand.

We are also sure that with this visit there will be a clearing up for both our guest and ourselves of some misapprehensions which have not helped in the mutual relationship which is a basic tie between an ambitious and progressive governor and an area with all the unrealized growth which Sanford represents.

Welcome, indeed, Governor Kirk and "Yah, come back, he'll!"

## Ellsworth Bassett Heads Port Board

Ellsworth W. Bassett, a Maitland civil engineer, was elevated from vice chairman to chairman of the Seminole County Port Authority last night.

Bassett was elected with no opposition by the seven-member port board of directors and succeeded Lee P. Moore, whose term expires this month.

Moore is retiring after a three-year appointment and disclosed last night in a meeting that he had dispatched a letter to Gov. Claude Kirk asking that his name not be considered for reappointment at the press of business would prevent him from serving.

Kirk's name was submitted to the Seminole County Commission for reappointment to the port board.

After Moore announced his decision, Harold Kastner nominated Bassett for reappointment to the board. This was seconded by James Ryan, an Bassett was elected without opposition.

Other officers elected include Kastner as vice chairman-treasurer and James Wagner, secretary.

Millican had just finished explaining to the assembly of area businessmen that FTU, which opened its doors only last September, was already in trouble in obtaining funds from the state to continue needed construction.

"If the money was given to us right now to build, we would still be far behind," Millican stated. "We needed \$15 million this year which we did not receive."

Millican had just finished explaining to the assembly of area businessmen that FTU, which opened its doors only last September, was already in trouble in obtaining funds from the state to continue needed construction.

## Shopping Center Plans Announced

By BILL SCOTT

A 40,000-square-foot, half million-dollar shopping center will be constructed on U.S. Highway 17-92 between DeSoto and Florida Streets.

To be known as Fairway Plaza, the complex will contain approximately 12 businesses and expected to be open by Oct. 1, according to information released today by Harvey Amlund, vice president of General Guaranty Mortgage Company of Winter Park.

The mortgage official, whose firm will be handling the permanent financing for the project, said an official announcement would be made during an appreciation dinner for Gov. Claude Kirk given tonight by a group of Sanford businessmen at the House of Steak.

Amlund said the decision to build the center was a venture of Harger, Inc., a business endeavor of Dr. Charles W. Hardwick, Sanford physician, and Walter Gardner, anesthesiologist.

Among the firms already announced to locate in the center are Fairway Markets, Ben Franklin Department Stores and G.O. & N. Kelett's Drug Store.

Local leasing is being handled by Nat. Ribburg Realty, United State Bank of Seminole is the construction financier.

Ribburg said the center will be constructed in a Colonial motif along the same line as the Fairway Center in Maitland.

## FTU Needs Construction \$\$

By TOM ALEXANDER

Dr. Charles Millican, president of Florida Technological University, speaking before the Seminole Chamber of Commerce board last night, told the local assembly, "We've already passed the crossroads in education and we cannot go back, we must move forward."

Millican had just finished explaining to the assembly of area businessmen that FTU, which opened its doors only last September, was already in trouble in obtaining funds from the state to continue needed construction.

"If the money was given to us right now to build, we would still be far behind," Millican stated. "We needed \$15 million this year which we did not receive."

Millican had just finished explaining to the assembly of area businessmen that FTU, which opened its doors only last September, was already in trouble in obtaining funds from the state to continue needed construction.

## BLOW YOUR COOL AT HOME!

INCREASE HOME COMFORT

Not only air conditioning create a comfy atmosphere with season of top service, but will increase your home resale value. Install now! Florida State has money available for all types of home improvements.

Check with Ralph Pezold at Florida State Today 322-1611.

WHERE YOU FINANCE DOES MAKE A DIFFERENCE

## FLORIDA STATE BANK

MEMBER F.D.I.C.

"Serving You Is Our Pleasure"

## Music-Music-Music!

Want a new stereo? Well why not let your old one help pay the bill. Sell it with a Sanford Herald "Fast Action" Want Ad. Here is an example of an ad that did the job in just 3 days.

Stereo: RCA console model with record changer. Magnavox finish \$125, 322-0000.

### TO PLACE YOUR "FAST ACTION" SANFORD HERALD WANT AD

DIAL 322-2611 OR 425-5938



# Petree Resigns As 'Action' Prexy



ROBERT PETREE

"I would sincerely like the board to consider (the resignation) in 30 days."

In his written resignation, Petree stressed that he concurs "completely with the recent criticisms of the School Board concerning the lack of compliance with Federal law and that my complete and unreserved sympathies are with our executive director insofar as the possible statements attributed to him in the local press."

"However, since assuming the presidency of this organization several years ago, it has been my policy as chairman that the business of this organization, as I see it, is to exploit the resources of the community for the benefit of the underprivileged in an maximum harmony and minimum public controversy. I have indicated heretofore that I do not regard the Seminole Community Action program as a civil rights program and that where abuses of the constitutional rights of individuals or groups of people may arise in the community, there are available other avenues of re-

lief, which include both group activity and court litigation. I have never felt that it was wise to involve this organization in highly controversial, political, or legal conflicts, as such inevitably divide the community and, in my mind, hinder the efforts of our organization.

"Recently, the general membership authorized and adopted a resolution relating to the current school desegregation activities. In my judgment, that action, while morally correct, was not wise insofar as the general welfare of the organization and was certainly in controversy publicly and in his capacity as executive director. This is also contrary to the policy which I have announced as chairman. I realize this policy is a question of opinion and personal judgment, and I must conclude from what has transpired, that given the existing conflict apparently between the membership's at-

titude and certainly the director's attitude, the two points of view cannot coexist. I am, at this moment, unwilling to concede the wisdom of the director's policy and therefore I shall step aside and permit the board to choose a new chairman whose policy will be more harmonious with that of the director's and accordingly of the general membership."

At the same time, Petree praised Executive Director Amos Jones, stating he had never met or worked with a "gentleman more fully qualified, more personally dedicated, or more completely honorable. Through the application of his resources, our organization has gone from a floundering, ineffectual body to a successful functioning organization, fulfilling the purpose of a charter and providing substantial benefit to the entire community."

"This subcommittee is still distressed by the continued lack of urgency in the concern of Washington and Saigon for the daily lives of the South Vietnamese people," Kennedy said.

"We in the subcommittee have developed a natural skepticism of endless, costly reports that emanate from the civilian as well as the military side of the war."

Kennedy, assistant Senate Democratic Leader, disputed Defense Department testimony that improved resettlement efforts and changed military tactics had reduced the number of refugees.

"The only way to really reduce the number of refugees is by reduction of the military and that goes for a Viet Cong as well as ourselves," Kennedy said.

John A. Hanna, administrator of the Agency for International Development, and Warren Nutt, assistant secretary of defense, said there were 12 million temporary refugees in Vietnam as of last month—116,000 of them in the United States.

Under questioning by Kennedy, however, they said many civilians still are being displaced by combat and many return to their villages to find their homes destroyed.

My company will be moving to another area in a couple of days—we'll be pulling bridge security for a few months. We'll be going on a lot of combat and recon patrols day and night as well as setting up ambushes for Charlie. But our main objective—keep the enemy from taking Liberty Bridge.

It's so stinkin' hot over here. I'd hate to guess how much water I drink and sweat a day. The guys in my company received this stationary free yesterday—I don't like it—but don't knock what's free.

The NVA must be dug in real good in the mountains all around us—because they're still there—after all the stuff we've put on 'em. All day and night—every night—we keep hitting them with 81 mm mortars and both the white phosphorus and heat type. Plus the jet fighters and B-52 bombers keep dropping their loads on them. It's just a constant dazzle of fireworks 24 hr. a day. You just hope you're never caught in the middle of it all.

Using it as a figure of speech—the sun is always out over An Hoa. Come nighttime—we keep shooting illumination mortars into the sky; that bust and parachute down. So every minute of the night—there's a lighting of 5 minute stars floating down and lighting up every area that the 'gooks' could attack from. If they're comin'—we'll see 'em!

Gotta go—work to be done. I'll write again later.

Take care me—and drink plenty of ice-cold tea for me. Miss ya.

Love,  
Dick

Bill Boucher, chairman of the Founder's Day committee, met with Dalsh Cowan and E. C. Harper Jr., co-chairman, and tried to ease the situation with the Sanford Plaza Merchants, has apparently heard ruffled feelings of certain merchants and another joint promotion is being contemplated in the near future.

This was the result of a Tuesday afternoon meeting of the Greater Sanford Businessmen's Association held at the Suncoast Chamber of Commerce.

Boucher said the problem was created because certain ground rules were not spelled out regarding individual promotions by merchants and the committee would be resolved in the future.

Cowan said he thought the violation was not intended and this should not cause hard feelings in future plans by the two groups. All merchants agreed that the result of the sale was good and stores in both associations reported increased sales. Boucher and Cowan both indicated desire for another joint promotion, possibly around Labor Day.

A statement of expenses incurred during the sale indicated \$60,000 was spent by the two groups for promotion.

## Church Meeting Ends Saturday

A six-day Southeast Caribbean Seminar sponsored by the United Presbyterian Church this week at Holiday Inn concludes Saturday. Thirty-five representatives from six states and three Caribbean islands are attending.

Miss Jean Huffman, of New York, eastern area representative, women's program, for the Ecumenical Mission and Relations of the UP Church is chairman for the seminar. She is being assisted by Rev. and Mrs. Lucas Grile, of Westminster Presbyterian Church, of Casseberry, in making arrangements.

Seminarian leaders are Rev. Guspar Langella, United Presbyterian minister with a doctorate in divinity, and Miss Jean Huffman, New York, eastern area representative, women's program, for the Ecumenical Mission and Relations of the UP Church is chairman for the seminar.

## Scheffner Appointed

Republican William Scheffner of Matland was among the 29 persons appointed by Gov. Claude Kirk to serve as local trustees of various state Junior Colleges. Tuesday, Scheffner was named to the board of trustees of Seminole Junior College to fill the vacancy caused by the death of A. R. Lerman.



"HOBBOES" converged on Sanford yesterday to partake of the Mulligan stew served up by the city recreation department. These "hoboes" are Luis Perez, Ivan Tabor and Bobby Rapa.

## Retains Post Post To Oct.

## Roumillat Delays Leaving

By BILL SCOTT

Francis Roumillat III will continue as Seminole County Port administrator until a replacement can be found, presumably by Oct. 1 when the county's present operating budget is concluded.

This action came during last night's meeting of the port authority directors and came after Roumillat had announced a week ago his intention to resign as chief administrative officer by July 2.

Elisworth W. Bassett, authority vice chairman, asked Roumillat to continue in his present office until a suitable replacement could be found.

It was pointed out that a \$7,200 part-time administrator's salary already was approved until October, when a new budget will be adopted by the County Commission setting a \$10,000 limit to the salary for a full-time administrator.

Roumillat said he could not consider the salary offered on a full-time basis and by resigning he could "clear the deck for the authority."

It was at this point that Bassett asked Roumillat to stay on a temporary basis as administrator and handle the regular business of the authority.

Roumillat said he could not in good conscience turn his back on something he had worked on for six years and would stay provided the board arranged to interview persons applying for the office.

Bassett replied he might favor a higher salary but did not believe the commission would approve it, since there had been nothing to use as background to justify the request.

The motion to increase administrator's salary by \$2,000 was voted down on a four-to-two ballot with Kester and Wheeler voting to increase and James Ryan, James Wagner, Edward Yarborough and Bassett voting against.

Yarborough, a county commissioner, said he felt the commission would not approve an amount above \$10,000 at this time.

## Deaths In The Area

A. J. PETERSON, 84, of 711 E. First St., died Tuesday morning following a long illness in Chicago, Ill. He came to Sanford in 1929. He was a retired Pure Oil distributor and a member of the First Baptist Church of Sanford.

MRS. JESSIE SMITH, 72, of 556 E. Warren Ave., Longwood, died Wednesday at her home. She was born in Philadelphia, Pa. She was a charter member of Rolling Hills Methodist Church, where she was the oldest member of the congregation and a member of the afternoon circle. She had lived here for eight years.

Survivors are a son, John Flauger of Longwood; a daughter, Mrs. Pharis Deaver, Quarryville, Pa.; four grandchildren and three great-grandchildren.

Seminole Funeral Home, Altamonte Springs in charge.

Two members of Franklin D. Roosevelt's cabinet held their office throughout the entire period of his presidency—Harold Ickes and Frances Perkins.

## Funeral Notice

Funeral services for Mrs. Jessie E. Smith, 72, of 556 E. Warren Ave., Longwood, who died Wednesday at her home, will be held at 3 p.m. Tuesday at Seminole Funeral Home, 2504 Oak Avenue, Sanford. Burial will be in the Rolling Hills Methodist Church cemetery. Survivors include a son, John Flauger, Longwood; a daughter, Mrs. Pharis Deaver, Quarryville, Pa.; four grandchildren and three great-grandchildren. Interment will be in the Rolling Hills Methodist Church cemetery. Mrs. Smith was a charter member of the Rolling Hills Methodist Church, where she was the oldest member of the congregation and a member of the afternoon circle. She had lived here for eight years.

**BINGO EVERY THURSDAY 7:30 P. M.**

**KNIGHTS OF COLUMBUS HALL**

2504 OAK AVENUE SANFORD

**JACK POT \$100.00**



EXECUTIVES leasing 137 at the Sanford Airport for the establishment of American Radiochemical Corporation, a manufacturer of radio active and non-radio active compounds for use by universities and medical research facilities, are from left: Harold D. Jordan of Oviedo, son of L. E. Jordan Sr., a lifelong county resident and formerly a member of the Seminole County Board of Public Instruction for 27 years, is the president and production manager of American Radio-

## Your Personal Finance

## Facing College Bills? Back The Burke Bill

By CARLTON SMITH and RICHARD PUTNAM PRATT

Parents with college-bound children in the fall may find a strong incentive to put something aside each year. The trouble now is that parents know they should be preparing for college expenses, but they don't. A survey conducted for the College Entrance Examination Board showed that even among families with a median income of \$14,000, more than two-thirds had no systematic saving plan.

But suppose you know you could put \$500 into a trust fund this year and pay no tax on it. For a \$10,000-a-year family with two children, filing a joint return, it would take \$617 of before-tax income to put \$500 away in savings. That \$117 difference makes a pretty good start.

## Seminole Calendar

- June 25: Church of Jesus Christ of Latter Day Saints will conduct a rummage sale from 9 to 5 p.m. in the building at 12th and French Avenue. Specialties of the sale will be large size dresses and shoes.
- June 26-28: Country Store sponsored by Dorcas Circle 8 a.m. to 5 p.m. in White Hall building, Upsala Presbyterian Church.
- June 28: Methodist Youth Fellowship will hold a car wash at United State Bank of Seminole in Sanford Plaza, from 10 to 4.
- July 1: The Sanford Shuffleboard and Tourist Club will have its covered dish supper 6 p.m. at the club house, located at the lake front.
- July 4: Fleet Reservists' annual picnic-arrival, 1 p.m., at the club; members and guests, especially the kids, invited.

## WHAT DO YOU KNOW?

Yes, What do you know about...  
—sympathetic concern for the unwed mother-to-be?

Yes, What do you know about...  
—adopting a cuddly little bundle of love?

Listen to WTRR - 1400 THURSDAY, JUNE 26, 6:30 P.M.

Children's Home Society  
A United Fund Agency

## Nuclear Age Has Arrived In Sanford

# New Chemical Firm Organized At Airport

By HILL SCOTT

The nuclear age has arrived locally in Sanford.

This was confirmed with the disclosure that two chemists had leased a building at Sanford Airport for the creation of a new firm to engage in the manufacture and chemical synthesis of radioactive compounds for use in research, medicine and industry.

Harold D. Jordan, 40, of Oviedo, son of L. E. Jordan Sr., a lifelong county resident and formerly a member of the Seminole County Board of Public Instruction for 27 years, is the president and production manager of American Radio-

chemical Corporation, and John J. Hobbs, of Orlando, is treasurer and general manager.

In an exclusive interview with The Herald, Jordan stated that the new firm would employ six persons at start with additional employment opening as sales increased.

American Radiochemical Corporation will, in its radioactive compound synthesis (manufacture), devote 80 per cent of its operation to the utilization of isotopes, carbon-14, which emits soft beta radiation.

Various other isotopes also will be used for special custom synthesis for drug control and agricultural research.

Both men are experienced chemists. Hobbs is a chemist experienced in dealing with radioactivity and was formerly with Nuclear Research Chemicals and is currently the president of Orlando Labs, Inc. Jordan spent the last decade developing radioactive technology while associated with Nuclear Research Chemicals and Mallinckrodt Nuclear, of St. Louis, Mo.

Also associated with the two men is William Haysweh Jr., of Winter Garden, a pioneer in the carbohydrate field, who will head ARCC's radioactive carbohydrate department.

Other key personnel expected to join the new Sanford-based nuclear industry in the near future are Joseph T. Johnson, of Hatteras, N.C., graduate work in chemistry at University of Florida.

The firm expects to sell to a world-wide market with a projected \$5 million business within five years. Jordan said Jordan is engaged to marry Anne Lamm, of Winter Park, and the couple will reside in Sanford.

## Father Slays Eight

By JERSEY CITY, N.J. (AP)—A woman and her seven children were stabbed to death early today in their apartment, police said.

The father, Rafael Torres, a 40-year-old greengrocer, was arrested on a murder charge.

Police said Torres was picked up at his home shortly after he called his apartment and told him he had stabbed his wife and children to death with a hunting knife.

**BORDEN'S ICE CREAM SANDWICHES 39¢**

**KLEENEX NAPKINS 11¢**

**BOUTIQUE TOWELS 4 \$1.00**

**GILLETTE SUPER STAINLESS BLADES 89¢**

**CINCH-CLEANER 9¢**

**SEGO LIQUID DIET 369¢**

**SUMMERTIME SAVINGS**

**BLACK AND GOLD BUTT BUCKET 99¢**

**FLASHLIGHT & KNIFE 137¢**

**TRAVEL ALARM CLOCK 399¢**

**PORTABLE SOLID STATE RADIO 999¢**

**INSTAMATIC 124 CAMERA OUTFIT 1399¢**

**POLAROID COLOR FILM 399¢**

**AMERICAN FLAG 199¢**

**AMERICA'S Fastest Growing Drug Store Chain**

**SANFORD**

2438 Fern Ave. Hwy. 17-92 Next to Winn-Dixie

PHONE 322-8270

Store Hours: MON. THRU SAT. 9 A.M. 'TIL 9:30 P.M. SUN. 10 A.M.-7 P.M.

**ICE MILK 39¢**

**SEA & OZI 99¢**

**SECRET SPRAY DEODORANT 64¢**

**BAND-AID BRAND-AID BRAND-PLASTIC STRIPS 59¢**

**ANTIGEL BOTTLE 129¢**

**LILY PUSHERTON 169¢**

**GELUSIL 183¢**

**VIPENTA ZESTABS 199¢**

**SUMMERTIME TASTE TREATS**

**INSTANT CHOCOLATE COVERED COOKIES 351**

**PRE-SUBMERGED WYLLERS SOFT DRINK MIX 325¢**

**LISTERINE ANTISEPTIC 73¢**

**300% EXTRA! 43¢**

IF EVER WE ARE OUT OF AN ADVERTISED SPECIAL, PLEASE ASK FOR A RAINCHECK



Editorial Comment

Road Construction Is Needed Here And Now!

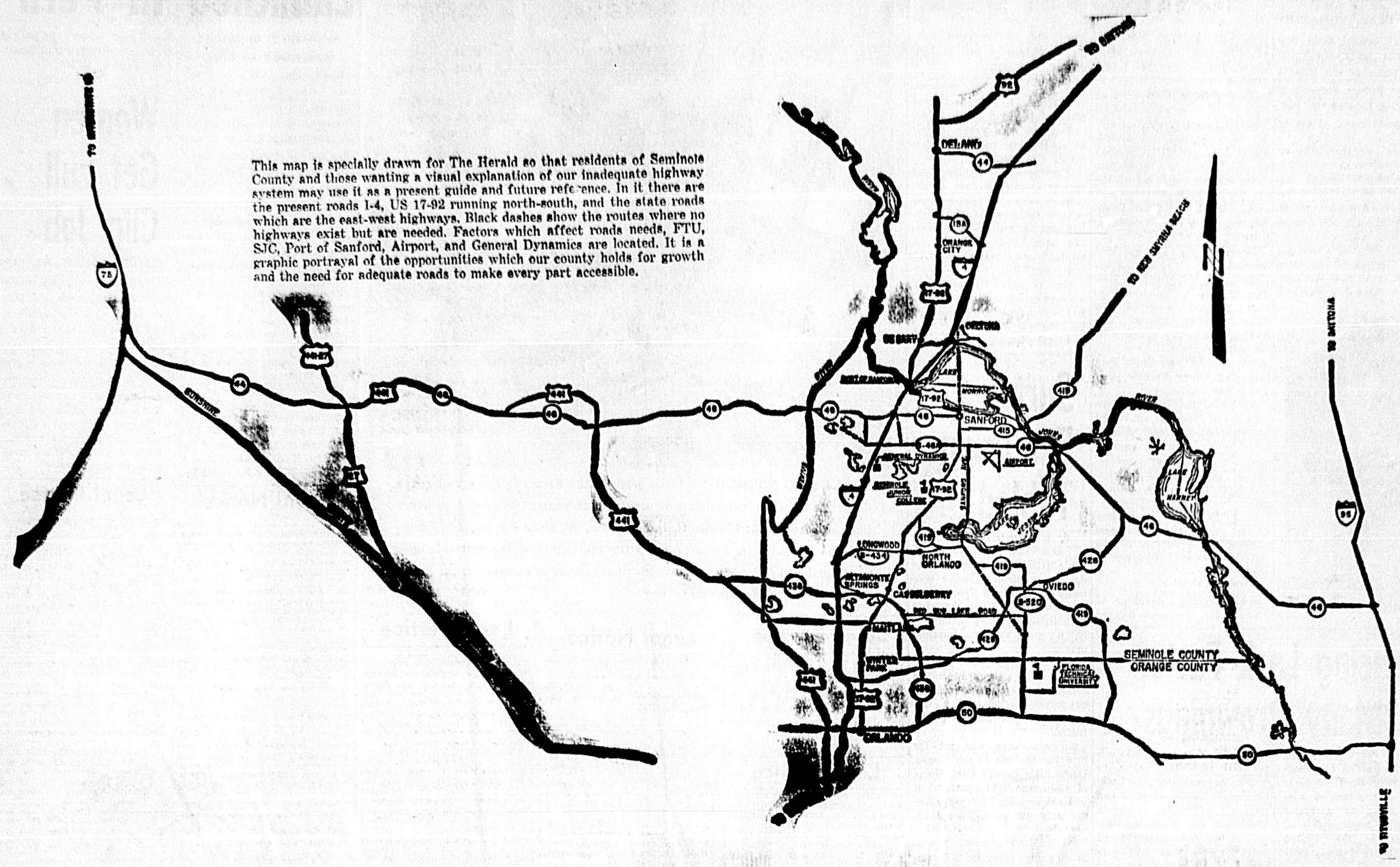
Look across to our opposite page! Thanks! That is the specially drawn map of our highways which we had prepared and printed on March 18 to let the visual story of the inadequacies of road facilities be plain to all.

Whether or not this will force the funding which is not in sight right now is questionable. But what is not questionable and cannot, in honesty be avoided, is the fact that these tourists will be heading into Central Florida.

action by our local and county leaders in keeping the pressure on those in authority who do such planning and control such construction.

There is, to be sure, an opportunity before the governor and the legislature to act in the public interest, to refrain from charges and counter-charges, to face up to the critical challenge for roads which

Seminole Needs Better Roads - New Roads



This map is specially drawn for The Herald so that residents of Seminole County and those wanting a visual explanation of our inadequate highway system may use it as a present guide and future reference.

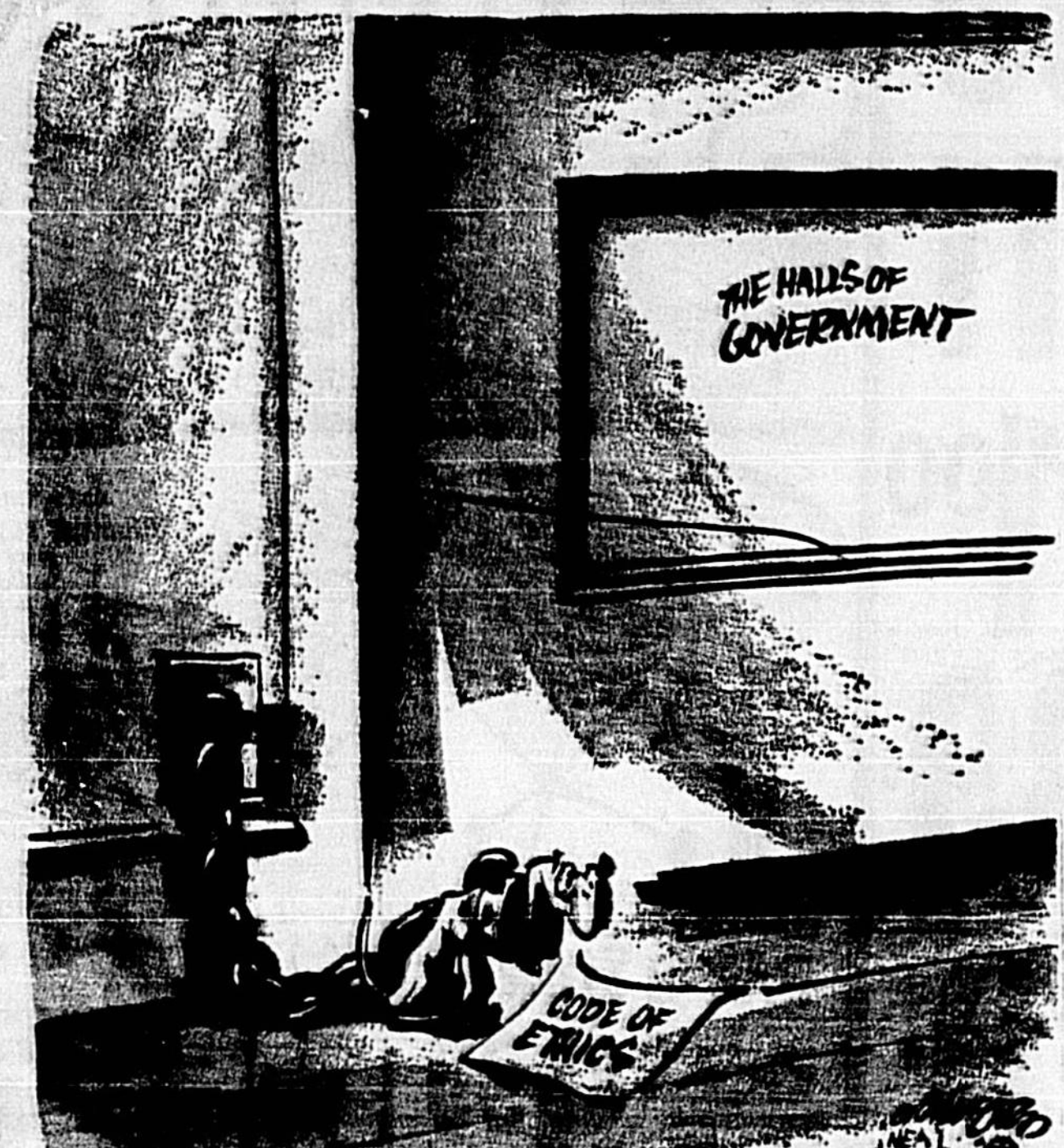
No Automobiles!

Bless you, John Volpe. Someone in high places has, at long last, spoken the unspeakable. The new secretary of transportation, in an interview with the Associated Press, said it may be necessary to curb the use of automobiles in the nation's cities.

Vulnerability?

As Jimmy Durante would say, "Everybody's trying to get into da act." As a matter of fact, Durante is probably the only adult American who hasn't come up with some sure-fire system for de-arming plane hijackers.

The Watchdog



Crane's Worry Clinic:

"Brevity Is The Soul Of Wit"

By GEORGE W. CRANE, Ph.D., M.D. CASE K-533: Paul Jones is the efficient editor of the SEN-TINEL-TRIBUNE at Bowling Green, Ohio.

of relieving suckers' of their money a little faster." Paper column without a break never our American Press Institute at Columbia University has been stressing the need for shorter paragraphs and shorter sentences.

Political Notebook:

U. S. Aid - "Black Capitalism"

By BRUCE BROSSAT, NEA Washington Correspondent. WASHINGTON (NEA) — Though new and old successes are reported, "black capitalism" is having its troubles.

Domestic Comment:

Peace For South Vietnam

By RAY CROWLEY, NEA Washington Correspondent. WASHINGTON (NEA) — It can be reported flatly that key men in the highest circles of government do not expect a settlement on Vietnam short of one, two or three years—perhaps longer.

H. L. Hunt Says:

\$10 Billion A Year Wasted

One of the principal causes of the continuing and growing federal budget deficit is the vast sums of money which are wasted every year. According to an investigation conducted by United Press International, this waste amounts to at least \$10 billion yearly.

The Sanford Herald

WALTER A. GIBLOW, EDITOR AND PUBLISHER. FRANK VOLZMINE, Circulation - General Manager. JOHN SPYRIDIS, Associate Editor.

Herald Area Correspondents

- Altamonte Springs: Mrs. Phyllis Branson 433-1187. Bay Lake-Deer Creek: Mrs. Maryann Miles 233-2678.

Art Group Nears Decade Of Culture

By CHARNER LEONE. The Sanford-Seminole Art Association is the first cultural organization in the community which has gone continuously for almost ten years without a break.

Kirk Vows To Unseat Cabinet Democrats

TALLAHASSEE, Fla. (AP) — Gov. Claude Kirk says he will try to unseat all the Cabinet Democrats because they displayed "pure political opportunism" in choosing the head of the new General Services Department.

Wheelchair Drive OK

TAMPA, Fla. (AP) — Ray Lewis has been given the clear stamp by Florida's top trooper to speed by in his motorized wheelchair at full tilt—six miles an hour—without licenses, lights or mechanical brakes.

Quotes

We are beginning to see signs of student majority sentiment against radical activities and this could be a turning point. —Walter H. Annenberg, U.S. ambassador to England.

Governor Bowing To State GOP?

TALLAHASSEE, Fla. (AP) — Gov. Claude Kirk says he may give up his campaign for a unicameral legislature because he is "an advocate of party positions."

Pastor Prays For Senators

HARRISBURG, Pa. (AP) — As the state Senate opened Monday, the Rev. Richard L. Higgins, pastor of Liberty Presbyterian church in McKeesport, Pa., delivered this invocation.

Linda-Cae Green

LINDA-CAE Green was quoted in the June 6 Sanford Herald graduation edition as expressing a desire to enter the U. S. Air Force women's program.

1x2

means 1 column by 2 inches. Total for an ad to be noticed or effective? You're reading this one!

Kirk May Drop One-House Drive

TALLAHASSEE, Fla. (AP) — Gov. Claude Kirk says he may give up his campaign for a unicameral legislature because he is "an advocate of party positions."

Save by the 10th. Earn from the 1st!

Table with 5 columns and 5 rows representing a calendar or savings schedule. Stars are placed in the 1st and 10th positions of both the first and second rows.

Advertisement for First Federal Savings & Loan, featuring a large '1x2' graphic and text about savings accounts and interest rates.







# S. Viet Commandos Join In Fight Against Communists

SAIGON (AP) — Hundreds of American-led South Vietnamese commandos were flown in to reinforce the embattled Ben Het Special Forces camp today. Spokesmen said they made brief contact with North Vietnamese troops threatening the border post.

repeated a 15-minute firefight just before noon today. The allied forces suffered no casualties and enemy losses were not known.

Another brief fight flared at about the same time northeast of the camp, where about 2,000 South Vietnamese infantrymen are trying to keep open a 10-mile stretch of Highway 512 that leads from Dak To to Ben Het.

One South Vietnamese was killed and four wounded, while enemy losses were not known.

North Vietnamese artillerymen kept up their two-month bombardment of the camp, alarming in 110 artillery, mortar and recoilless rifle shells Tuesday.

"The report we have is that there were no casualties or damage," said a U.S. Command spokesman. "This is not too realistic if everyone stayed in their holes."

Field reports said a second allied supply convoy pushed through to the camp Tuesday from Dak To. The first arrived Monday with badly needed ammunition.

On its return trip to Dak To Tuesday, that convoy came under small arms and bazooka-type rocket attack. One American was reported killed and two wounded.

Spokesmen have said two North Vietnamese infantry regiments and an artillery regiment moved across the border from Laos and Cambodia and began pushing pressure on Ben Het and

Dak To around the beginning of May. The camp 280 miles north-east of Saigon has been under steady artillery bombardment since then and is reported surrounded by an estimated 2,000 North Vietnamese.

Spokesmen said more than 1,500 North Vietnamese and 300 South Vietnamese troops have been killed around Dak To and Ben Het since May 1.

U.S. B-52 bombers launched two more raids Tuesday night and today against enemy troops

and gun positions north and south of Ben Het.

In other developments, 64 U.S. Navy river gunboats were turned over to the South Vietnamese navy today. Gen. Creighton W. Abrams, commander of U.S. forces in Vietnam, said it was "the largest turnover of naval vessels to the Republic of Vietnam yet completed."

Since June, 1968, the Navy has turned over 167 boats to South Vietnam in the accelerated program to shift more of the war effort to government forces. Most of the boats turned over today were from the U.S. Army-Navy Mobile Riverine Force operating in the Mekong Delta.

The Riverine force is being disbanded and its 1,200 U.S. Navy men and 4,800 Army troops will be among the 25,000 Americans withdrawn from Vietnam by August.

# Defiant Youth Now Foe Of State Czechs Put Clamps On Students

Associated Press Writer  
By GENE KRAMER  
PRAGUE (AP) — Czechoslovak students who defied Soviet tanks in the streets of Prague last August have become the "enemy" of their government.

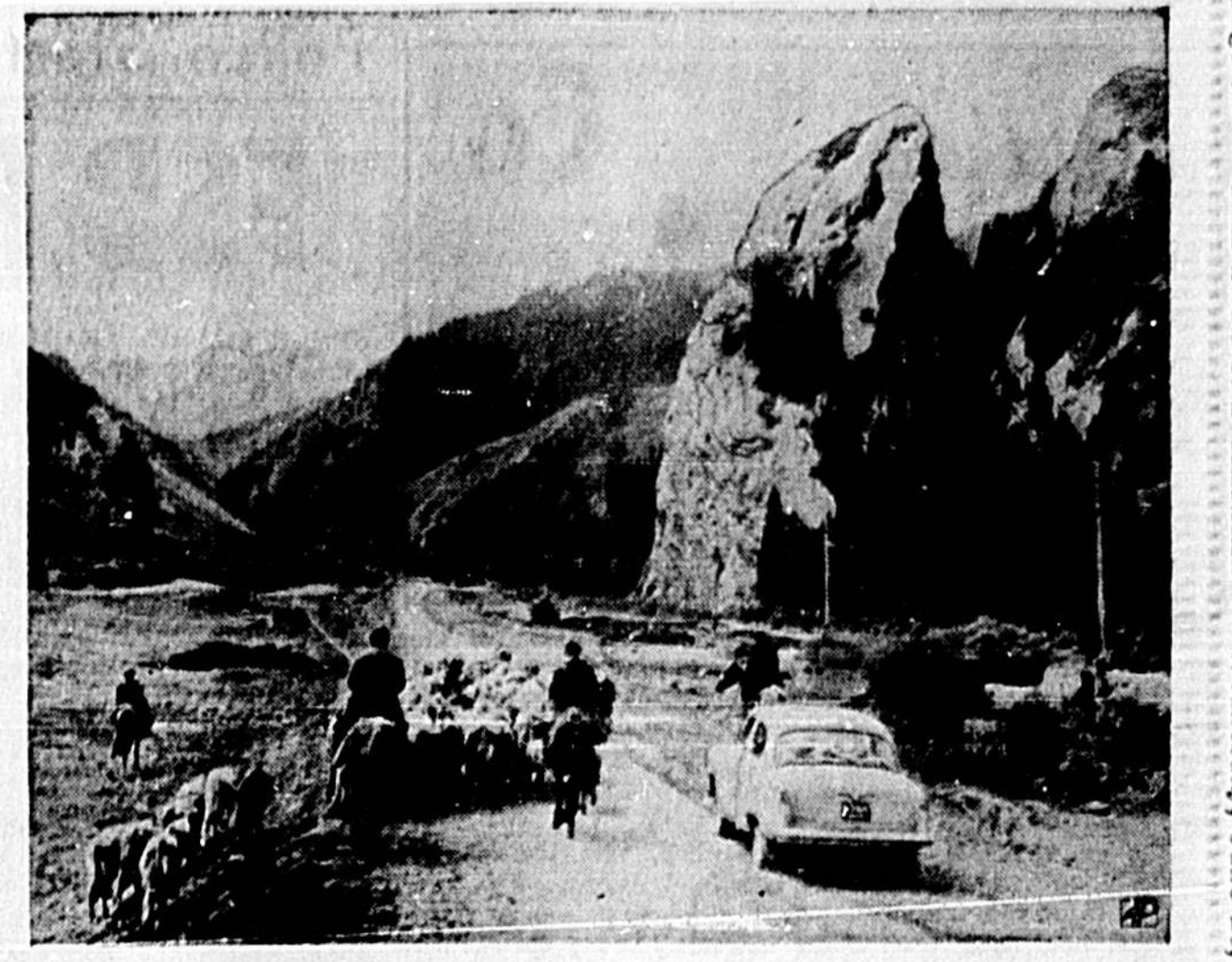
How does the leadership treat its enemy? In censoring their publicity, cuts off their funds, has demonstrations and eliminates their student organization to

set up a more obedient, if unrepresentative, body. Enter the Preparatory Committee of a New Union of University Students in the Czech Republic.

The student resistance in August helped save, temporarily, the liberal leadership of Premier Oldrich Cernik and Communist party boss Alexander Dubcek. Both had been arrested and taken to Moscow, but were returned to Prague.

Things have changed in 10 months of Russian occupation. Cernik is still premier but Dubcek was downgraded in April to chairman of the Parliament, a largely ceremonial post. The new Communist party chief, Gustav Husak, pursues a policy of ignoring the invasion and striving to keep the Kremlin happy.

Jozef Trnec, a Slovak, brought the Slovak student union into line while he was still head of the Communist party of Slovakia before his elevation. But the student union continued to embarrass the regime in Soviet eyes by criticizing government



TAKING THE HIGH ROAD - A car wades as Soviet herdsmen drive their cattle through the Jety-Opuz gorge in Kirghizia, north of Kashmir, to higher-lying pastures.

# Federal Report To Link Disease And Cigarettes

By H. L. SCHWARTZ III  
Associated Press Writer  
WASHINGTON (AP) — The federal government is putting the final touches on a new smoking health report that may have important impact on the debate over curtailing cigarette advertising.

The report is expected to go to Congress next week. Although officials decline to give any details, indications are it contains new evidence linking cigarette smoking to cancer, heart disease and bronchial troubles as well as other illnesses.

"It certainly contains no significant negative evidence that refutes any previous conclusion," said Dr. Daniel Astes of

the National Clearinghouse on Smoking and Health.

Asnes, in charge of putting out the report, said its findings were part of a "continuing story that is being woven" linking smoking to disease.

The report is due to be sent to Congress July 1, one day after the expiration of the 1965 law that forbade government regulation of cigarette advertising for four years.

Under the 1965 law, manufacturers were required to carry a health warning on all packages of cigarettes by public and college student, with plenty of fresh air — and mosquitoes. "What more could a college guy want?"

The four Kansas girls running combines in northwest Oklahoma this week say that's plenty — and in their view it sure beats being a camp counselor.

The coeds are earning college money this summer as field hands in the wheat harvest.

Their boss, Larry Paul, 32, of Shields, Kan., reports they are "working out better than the boys."

The girls are Pam Behring, 19; Beth Dondlinger, 19; Mary Becker, 17; and Kathy DeWitt, 18. Kathy is from Goddard, the others from Wichita.

When they came in from the fields at 10 p.m. Monday night, they were dressed in work shirts, jeans and cut-offs, covered with dirt, wheat chaff and insect bites.

"I couldn't begin to count them," said Pam, a Kansas University junior, scratching at some bites. "I don't think there's enough room in my body for them."

"One neat thing is we can wear any old thing, like baggy jeans, and not roll our hair. But we sure learned to appreciate neatness," said Kathy. She attends Pratt, Kan., Junior College.

The feminine crew gets a lot of reaction from passersby on the country roads.

"They just stop and stare—and then wave," said Pam.

Paul reports I've sure had a lot more boys apply for work since they've seen my crew."

# Coeds In Boys' Job

CARMEN, Okla. (AP) — The wheat harvest offers lots of good pay for a summering college student, with plenty of fresh air — and mosquitoes.

"What more could a college guy want?"

The four Kansas girls running combines in northwest Oklahoma this week say that's plenty — and in their view it sure beats being a camp counselor.

The coeds are earning college money this summer as field hands in the wheat harvest.

Their boss, Larry Paul, 32, of Shields, Kan., reports they are "working out better than the boys."

The girls are Pam Behring, 19; Beth Dondlinger, 19; Mary Becker, 17; and Kathy DeWitt, 18. Kathy is from Goddard, the others from Wichita.

When they came in from the fields at 10 p.m. Monday night, they were dressed in work shirts, jeans and cut-offs, covered with dirt, wheat chaff and insect bites.

"I couldn't begin to count them," said Pam, a Kansas University junior, scratching at some bites. "I don't think there's enough room in my body for them."

"One neat thing is we can wear any old thing, like baggy jeans, and not roll our hair. But we sure learned to appreciate neatness," said Kathy. She attends Pratt, Kan., Junior College.

The feminine crew gets a lot of reaction from passersby on the country roads.

"They just stop and stare—and then wave," said Pam.

Paul reports I've sure had a lot more boys apply for work since they've seen my crew."

# Lumber Prices Dropping

By STELLING F. GREEN  
Associated Press Writer  
WASHINGTON (AP) — Lumber prices have eased to be a major headache to homebuilders. Now they're a headache to lumbermen.

The sky-high lumber prices of a few months ago, which were even joggling by public and Congressional outcries, have succumbed to the tight money squeeze.

High mortgage interest costs have depressed the housing outlook and sent most lumber prices to less than half their February level. The lumber industry fears the sag may slow the progress of legislation aimed at taking the roller-coaster out of lumber prices.

"If the housing start situation improves, I think we will see frightening increases in wood product prices," Ernest Hodges, president of the American Forest Institute predicted in an interview.

A typical plywood item, quarter-inch interior sanded ply-wood, plunged from \$144 per thousand square feet in February to \$62 in early June.

But the cost of the raw material—from national forests, where most of the nation's soft-wood timber stands—rose 15 per cent last year and remains high.

"As a result many mills have closed their doors and cannot reopen them until more timber becomes available, regardless of how the housing market moves," Hodges said.

The recent increase in the prime bank interest rate was bad news for housing, which already had suffered a four-month decline blamed on high mortgage interest rates. Private new-home starts slidded in May to an annual rate of 1.5 million, compared with nearly 1.9 million in January.

# Stores' Crime Loss Paid By Housewife

By LISA CRONIN  
AP Business Writer  
NEW YORK (AP) — Every time a housewife shops, up to a nickel of each dollar she spends she is contributing to the consumer that she pays for theft.

The Senate's Select Committee on Small Business is holding hearings to determine the extent and causes of crime against business. It plans to offer legislation attacking the problem on a nationwide level. The committee also is looking for ways businessmen can prevent losses due to thefts.

A study on crime against small business sponsored by the Senate committee put the total cost of crime against business at \$3 billion in 1968. This figure does not include losses in the distribution and transport of goods.

Albert J. Reiss, a professor at the University of Michigan, who headed the study broke down the business crime bill this way.

Burglars stole \$98 million, vandalism took \$12 million and shoplifters took some \$54 million. Other losses came from employee theft, \$381 million; bad checks, \$316 million, and robberies, \$77 million.

Reliable figures on the cost of thefts against the transport industry aren't available but truckers estimate the loss at more than \$1 billion annually.

"We used to deal with theft as an exception to the rule," Taylor said. "But now it's an on-going problem."

# Altamonte Sets Rec Program

By PHYLLIS BLANSON  
A seven weeks recreational program will be sponsored by the city of Altamonte Springs for children grades one through six beginning last Monday and continuing through Friday, Aug. 8, from 8 a.m. to 12 noon, Monday through Friday on the ballfield behind city hall.

The program will be supervised by David L. Miller, basketball coach for Oviedo High School, assisted by Miss Rachel Stubbly, a teacher at South Seminole Junior High School.

There will be sports activities, arts and crafts, swimming and skating during the program. All children from the area are invited to participate.

# Lawton Installs

New officers of the T. W. Lawton Elementary School Parent-Teacher Organization of Oviedo were installed recently by Mrs. D. R. Ulrey, a first grade teacher.

Mrs. William Eggers is president and officers include Arthur Metcalf, president-elect; Mrs. J. E. Bayler, secretary; Mrs. George Austin, finance chairman; and Mrs. Darl Pearson, program chairman.

# All Time High

All time high of \$54.8 million in new construction was experienced in Seminole County in 1968.

Largest portion of construction expenditures—72 per cent—continued to be in new residential work, including 2,215 dwelling units (1,295 private homes and 920 apartments) at a cost of \$25 million.

Previous year's new construction started amounted to \$10.2 million for an increase of more than 240 per cent.

Total building permits issued were: Seminole County \$25.3 million; Sanford \$2 million; Altamonte Springs \$2 million; Casselberry \$1.7 million; Longwood \$1.6 million and Oviedo \$1.4 million.

# Japs Recover

TOKYO (AP) — A joint U.S.-Japan committee reached agreement today on the return of four more U.S. military facilities to Japan: a port facility in Kobe and three rifle ranges.

It brought to 19 the number of facilities designated for return to Japan out of a total of 60 proposed by the United States last December.

A 21-foot long earthworm was dug up in South Africa by two Swedish scientists.

# SJC To Offer 'Crafts'

Seminole Junior College announces the scheduling of a community services course in "Crafts" to begin on July 1. The "Crafts" course will run for six consecutive Tuesday evenings from 7 to 9:30 p.m. and will be held in Room 8 on the campus.

The Crafts course is designed to acquaint the participant with the fundamentals of cooper enameling, sand casting, block printing, paper mache and mosaics.

Those persons interested in taking this course may pre-register by phone, call the Director of Extended Services, 323-1450, or may register the first evening of class on the 1st of July.

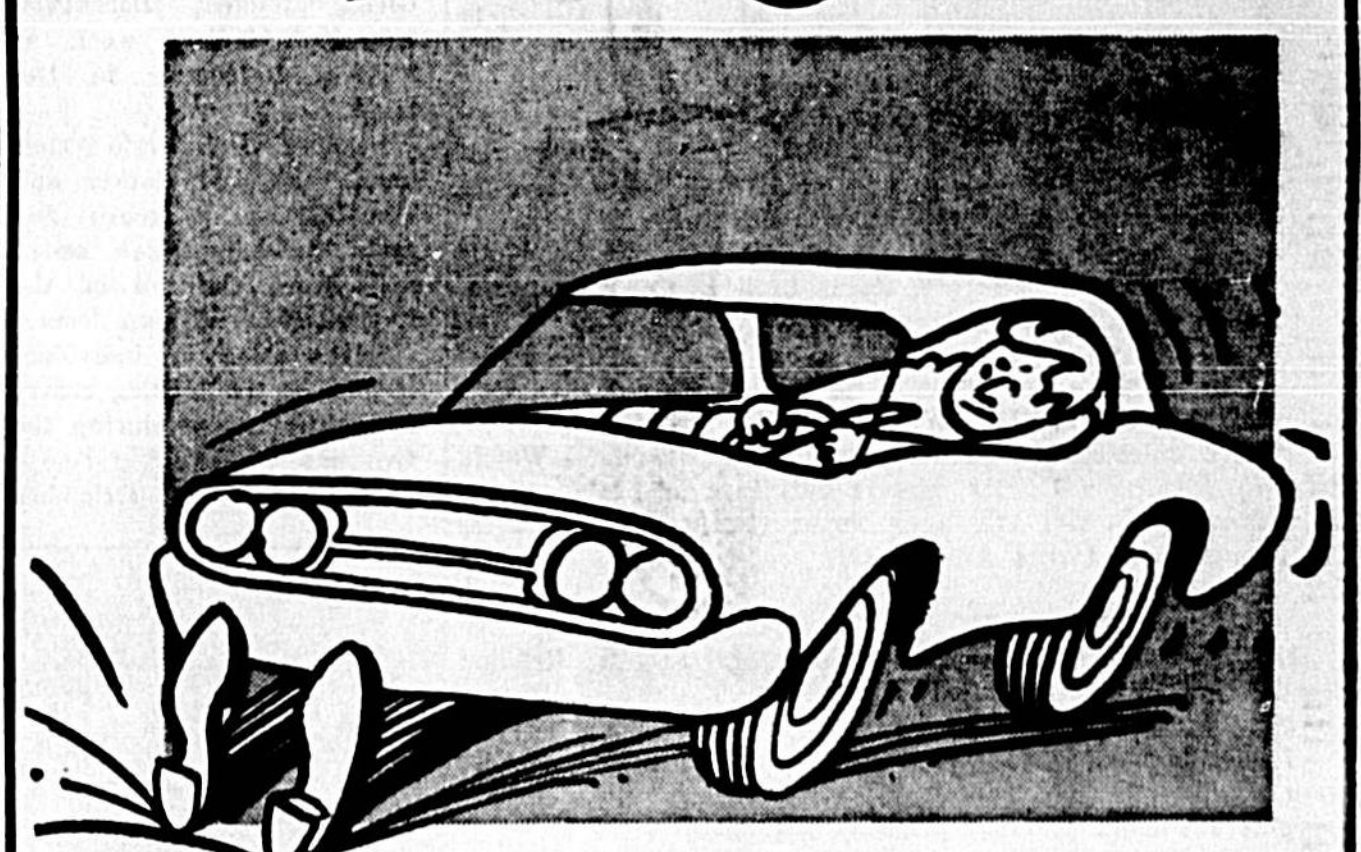
# FAMOUS STANDS TYPING COLE

Desert Sand finish. Can be used as a sturdy steel typewriter desk for your portable or standard machine. Drawer for supplies, shelf for books. Comes knocked down — but easy to assemble.

Model 759-39" wide \$1720 by 17" deep

Check with George Stuart 323-1450, or may register the first evening of class on the 1st of July.

# Penneys AUTO CENTER



# Can you stop fast enough? Not just a reline... FOREMOST® BRAKE OVERHAUL!

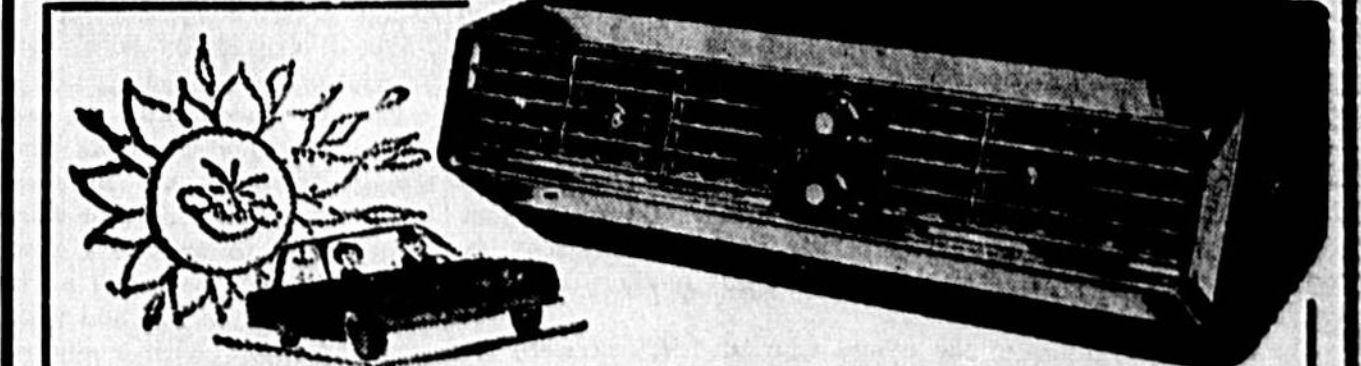
SPECIAL! 34.88

How fast can you stop in case of an emergency? Be ready for those unexpected stops! We install new premium linings, rebuild all wheel cylinders, resurface brake drums, bleed and refill brake system, repack front wheel bearings, install new front grease seals, new brake springs... more!

FREE BRAKE ADJUSTMENT FOR LIFE OF LINING!

\*Most American Cars

# At Zales Baylor means "Top-of-the-Class Time" at a modest price!



Foremost® Floridian auto air conditioner... our most economical model—cool!

Beat the heat with a Foremost® budget-priced auto air conditioner for compact and intermediate size cars! 2 front and two side louvers to adjust air flow! Terrific value!

169.95

DRIVE IN! CHANGE IT! NO DOWN PAYMENT!  
SANFORD PLAZA AUTO CENTER 8:00 A.M. to 9:00 P.M. MON. THRU SAT.

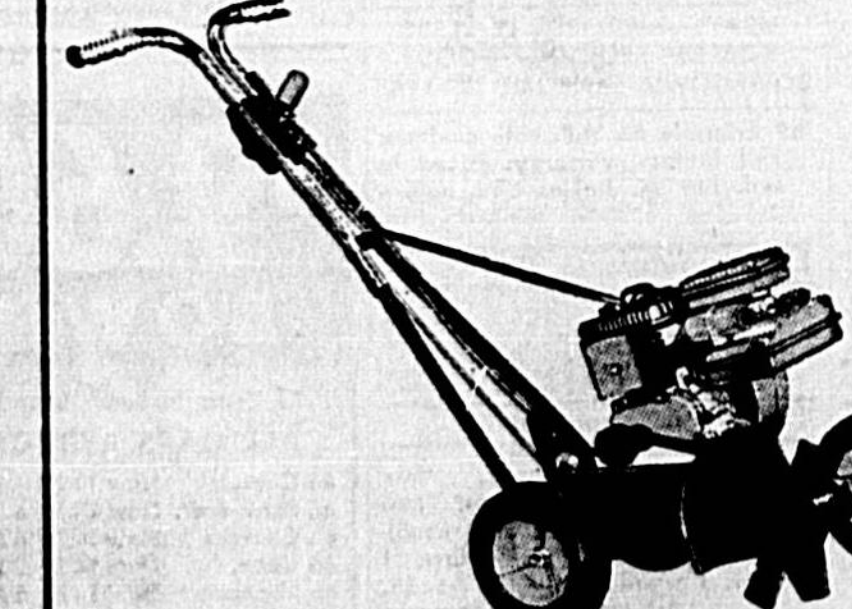
# Penneys ALWAYS FIRST QUALITY

# PENNCRAFT PUTS MORE FUN IN YOUR SUMMER!



PENNCRAFT® PREMIUM 21" POWER PROPELLED ROTARY MOWER 134.95

Just start, grip and guide... this beauty will do the rest! 3 1/2 HP, 4-cycle engine, 21" die cast aluminum deck, fully baffled, suction lift cutting, chain and throttle controls on handle panel, gas gauge, EZ height-of-cut adjustment and grass catcher!



PENNCRAFT® CUSTOM EDGER/TRIMMER 64.95

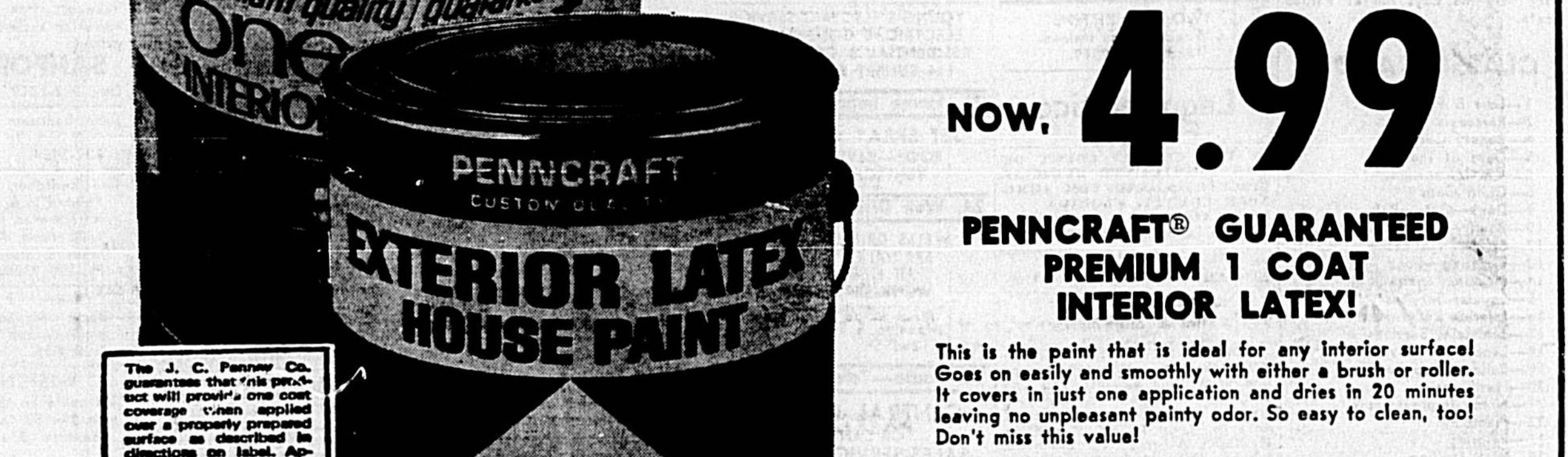
2 HP, 4-cycle engine has easy spin recoil starter, 90° to 180° swivel cutter head with 11 positive increments, throttle control at handle yoke, height control on handle shaft. Hurry in and save!

No Money Down — Use Penneys Time Payment Plan!

# PENNCRAFT® PAINT REDUCED!

# SAVE 2.10 to 2.61 a gallon thru Saturday!

YOUR CHOICE!  
INTERIOR, REG. 7.49  
EXTERIOR, REG. 6.98  
NOW, 4.99



PENNCRAFT® GUARANTEED PREMIUM 1 COAT INTERIOR LATEX!

This is the paint that is ideal for any interior surface. Goes on easily and smoothly with either a brush or roller. It covers in just one application and dries in 20 minutes leaving no unpleasant odors. So easy to clean, too! Don't miss this value!

PENNCRAFT® CUSTOM 1 COAT EXTERIOR LATEX

Here's a paint that makes each painting job a fast and easy one. Gives you one-coat coverage over most properly prepared surfaces. Smooth-flowing, it even defies blistering and peeling. Now's the time to give your home that needed paint job.

5 FOOT STURDY ALUMINUM STEP LADDER 8.88

Perfect for hundreds of uses. Sturdy aluminum step ladder has one piece extruded aluminum top. Extra knee braces on top and bottom steps. Vinyl tread shoes are riveted to feet. Ribbed pull shelves support up to 50 lbs.

6' ALUMINUM STEP LADDER 9.88

PENNCRAFT® 16 FT. FLAT STEP ALUMINUM EXTENSION LADDER 14.99

Rugged yet lightweight. Special alloy aluminum ladder resists rust and corrosion. 1 1/2" flat step rungs are locked into side rails. 13 ft. working height.

3 PIECE ROLLER SET 99c  
TWIN-PAX 9" ROLLER REFILL 2 for 66c  
CAULKING COMPOUND 4 FOR 1  
CAULKING GUN 98c

Charge It! in Sanford Plaza OPEN 10 A.M. to 9 P.M. MONDAY thru SATURDAY











# Dear Abby:

By Abigail Van Buren

DEAR ABBY: My husband is a professional man who has started to work late about two or three nights a week. On these nights he takes his secretary out for dinner. Perhaps I should mention that they dine at a social lounge where there's dancing, and he has been seen dancing with her. (How about a 32-year-old man having the strength to dance after putting in a 10-hour day?)

Perhaps I am overly suspicious because I married this divorced man as a result of having worked "over" him, and I am aware that you can't take an old dog new tricks. Any ideas?

DEAR ABBY: I am in the NINTH GRADE. My English teacher announced that if my term papers were not typed they would not be accepted!

Abby, how many ninth graders do you think know how to type? In our class they "type" on their typewriters. Our teacher said if we couldn't type them ourselves we could have our mothers, or a friend type them for us. And if that wasn't possible, we could HIRE a professional typist to do it. Well, I inquired, and around here every typewriter from \$125 to \$180 a page for a professional typing job, and my term paper is 16 pages long, and I certainly can't afford that.

I can sympathize with the teacher, and I'm sure it's a lot easier on her if all the term papers are typed, but as long as they're written neatly and are legible, I think they should be acceptable. What do you think?

DEAR ABBY: I am in the NINTH GRADE. My English teacher announced that if my term papers were not typed they would not be accepted!

# Horoscope Forecast

THURSDAY, JUNE 26, 1968

**GENERAL TENDENCIES:** Think deeply, and expect this day and evening to be a strange one. The right answers will come to you from within. Your ingenious approach - combining the old and new - will get you almost anything you want. This afternoon and evening, especially, is the time to accomplish much of value.

**ARIES (Mar. 21 to Apr. 19):** See that all tax, government and other important matters are in order. Improve your basic structure. Be sure you are more affectionate with your loved one who is feeling neglected.

**TAURUS (Apr. 20 to May 20):** If you think about who your associates expect of you, and then try hard to please them, you can accomplish much together. Come to a real understanding with everyone who is important in your scheme of life. Be wise.

**GEMINI (May 21 to June 21):** Here's the way to get ahead fast in your career. Get busy at your duties with real vim and vigor. Improve your diet so you feel and look better. Visit those you unwilling to visit who are ill?

**MOON CHILDREN (June 22 to July 22):** Once you work done, get out with good friends and participate in the hobbies and recreation you all enjoy. Gain the respect of important personalities. Show that you are an excellent conversationalist.

**LEO (July 23 to Aug. 21):** Be sure you do those annoying, but necessary, chores for your kin. Modernize where needed. This is the kind of help that clears the path for future happiness. Don't forget to pay those important bills, either.

**VIRGO (Aug. 22 to Sept. 22):** As soon as your work is done, get out with persons you like, visit with relatives, etc. Don't neglect those business contacts that are vital, either. Did you go for your regular dental checkup?

**LIBRA (Sept. 23 to Oct. 22):** Finances should be up to par in your coming week. Follow your intuition on how you can have the money to do in the future. Make your practical aims come true.

**SCORPIO (Oct. 23 to Nov. 21):** On this day you can accomplish almost anything you set your mind to but concentrate on your personal aims. You have wonderful chances in the social world, so be on the alert for them. You can make contacts that could extend far into the future.

**SAGITTARIUS (Nov. 22 to Dec. 21):** The ideal day for you to contact authorities in your field of endeavor. Get advice from them, quietly, on how you can get ahead faster. Evening is especially fine for romance.

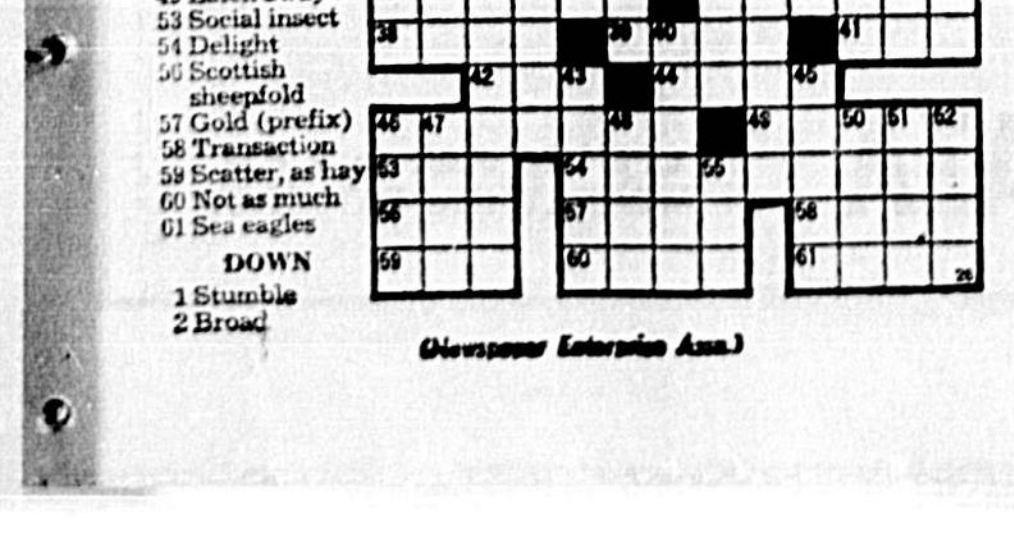
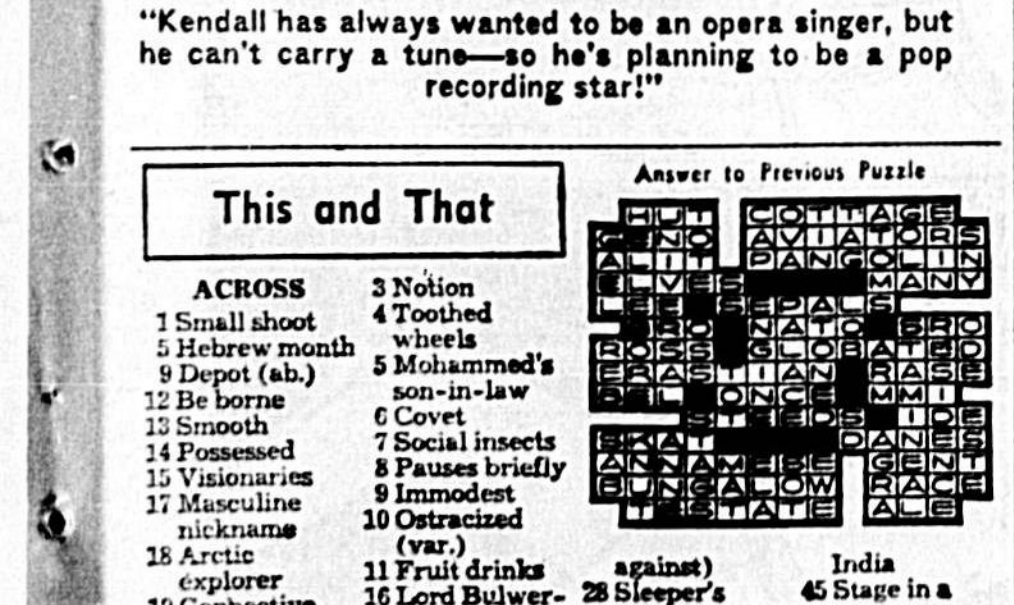
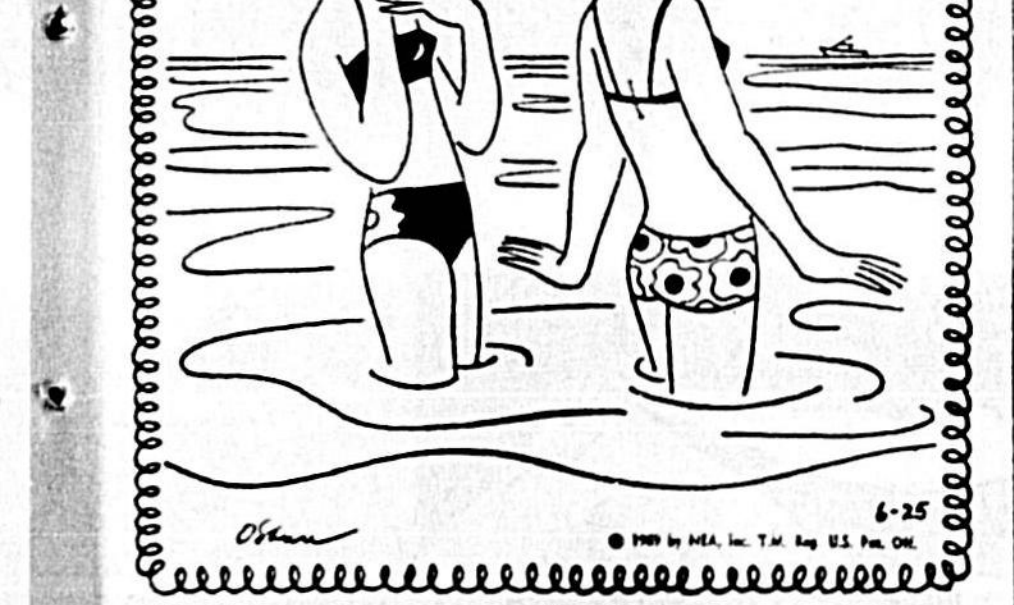
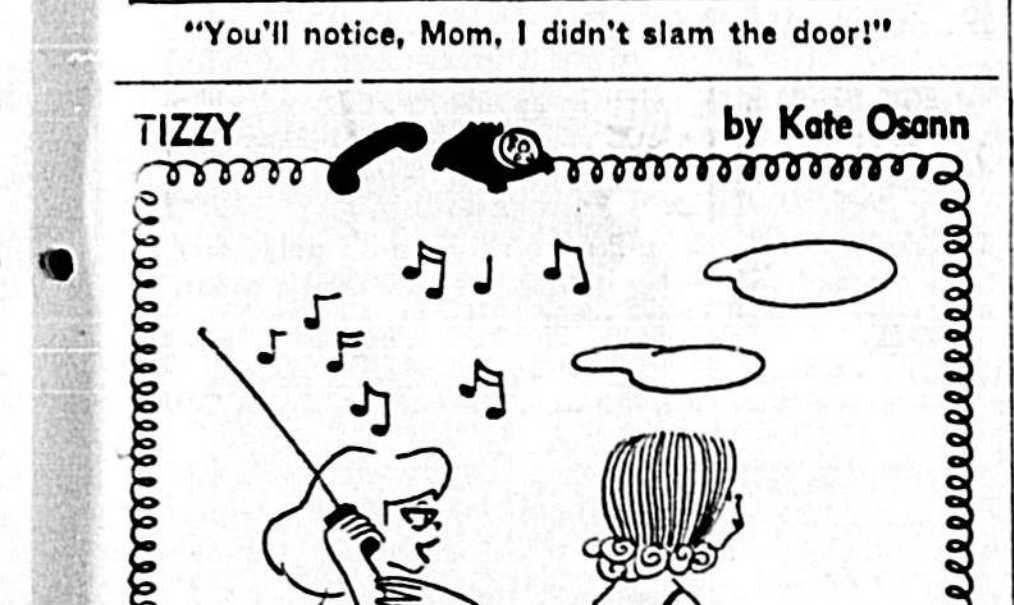
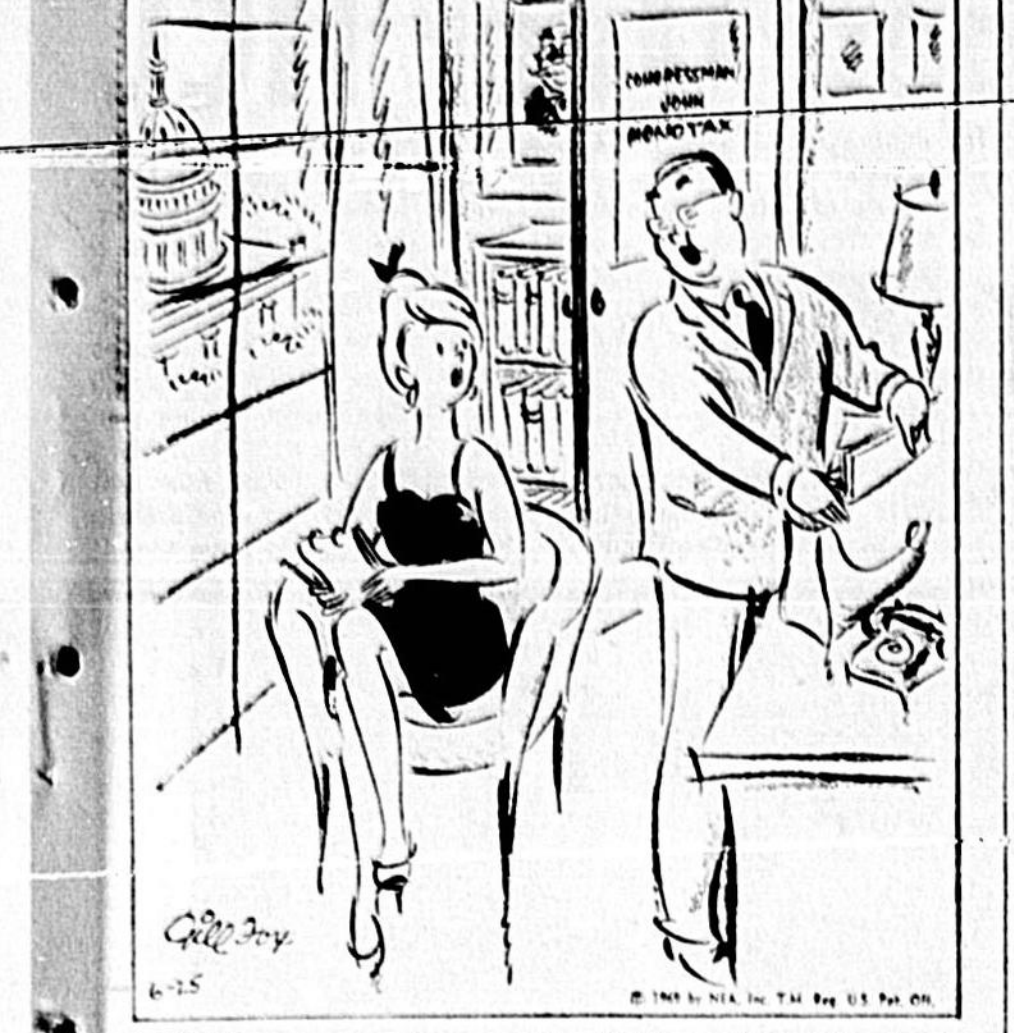
**ANYTHING OF A CONFIDENTIAL NATURE IS FINE TODAY AND TOMORROW.** CAPRICORN (Dec. 22 to Jan. 20): Be with good friends and enjoy social time. Include only those who are congenial. On you meet recently should be cultivated for greater friendship in the future.

**AQUARIUS (Jan. 21 to Feb. 19):** Now is the time to search out the important people you know who can help you to communicate your ideas. Delve into the civic matter that will help you to improve your image. Why not project your rights? I'm a p e r? Seek your niche.

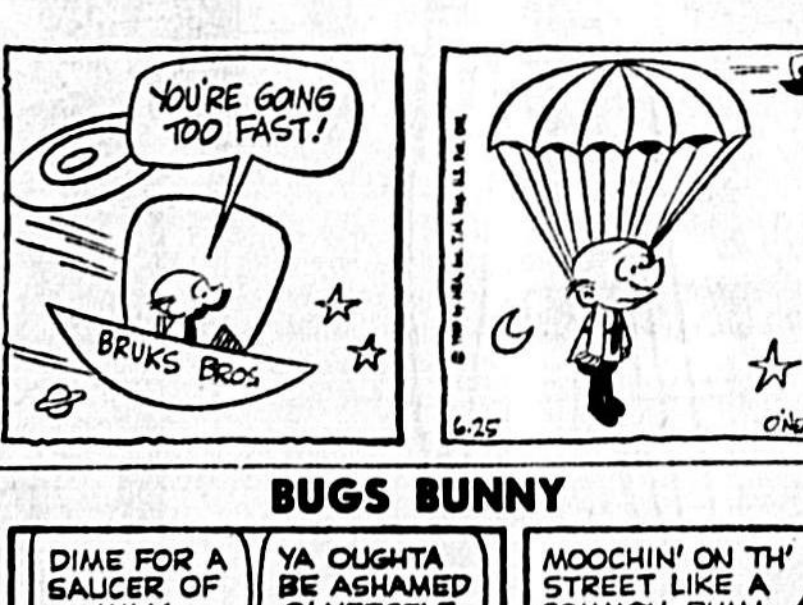
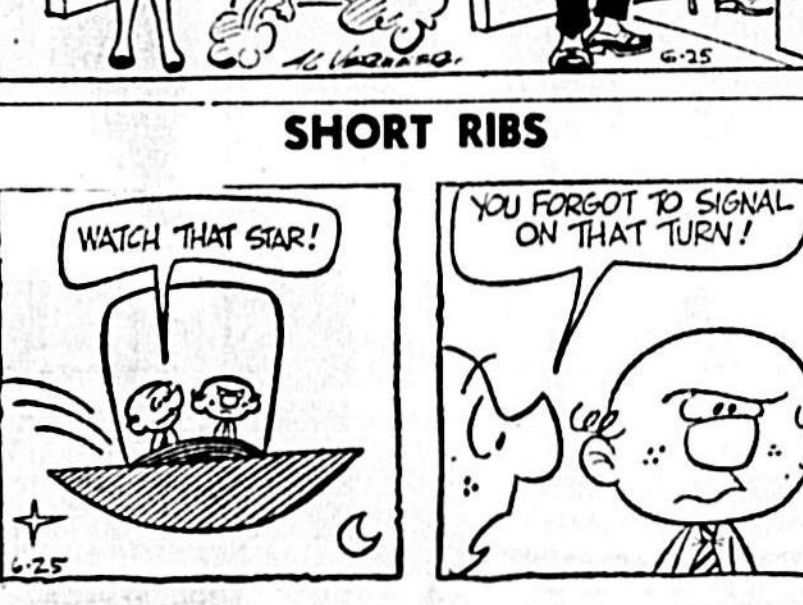


# SIDE GLANCES

By Galbraith

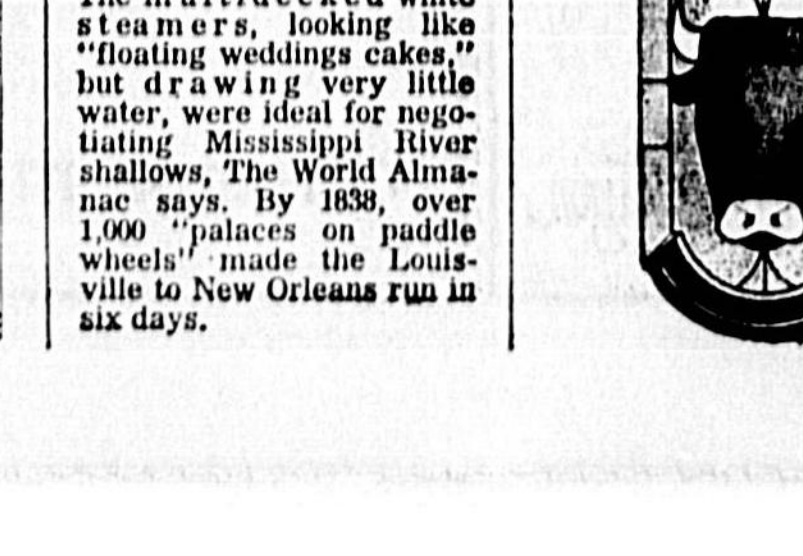
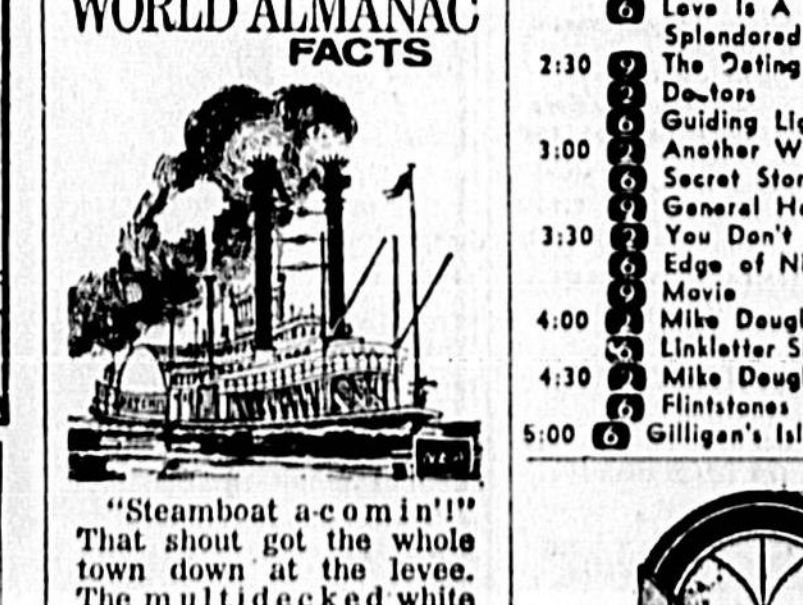
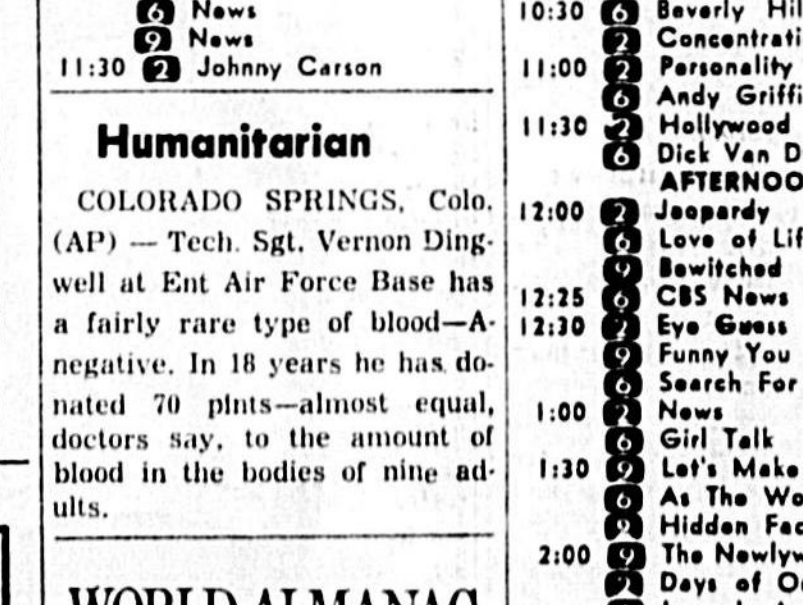
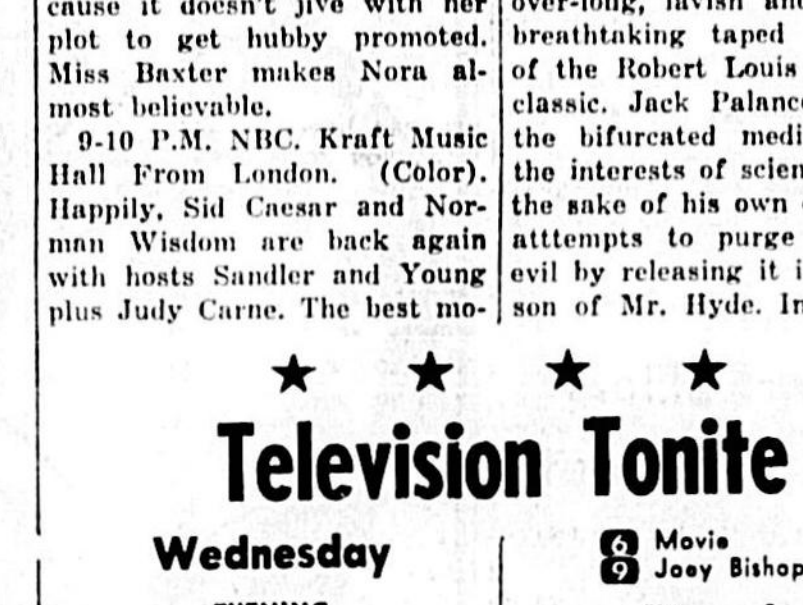
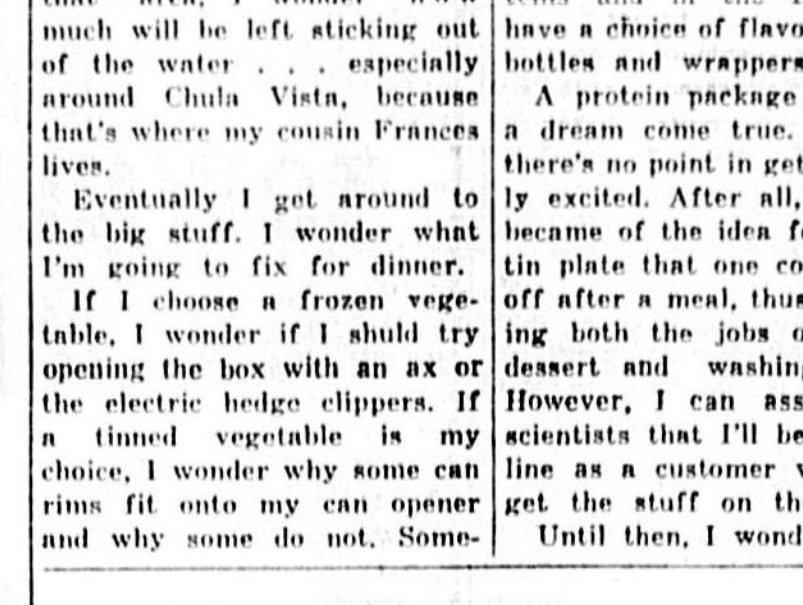


# OUR BOARDING HOUSE



# WE THE WOMEN:

By Batty Canary



# Highlights

I spend most of my time wondering about the important things in life. Now that the jogging fad is over, I wonder what all the joggers are doing. Hearing the prophecy that California is destined to slide into the sea and not knowing the depth of the Pacific in that area, I wonder how much will be left sticking out of the water... especially around Chula Vista, because that's where my cousin Frances lives.

Eventually I got around to the big stuff. I wonder what I'm going to fix for dinner. If I choose a frozen vegetable, I wonder if I should try opening the box with an ax or the electric hedge clipper. If a frozen vegetable is in my mind, I wonder why some can rinse fit onto my can opener and why some do not. Sometimes I open the can, find two cups of juice and wonder where the vegetables are.

Actually, I don't mind the leaking milk nearly as much as I mind having a bloody beef roast or chicken. It's a pain all through a paper plate and then onto my car seat. Maybe it's just me but I dislike having to wash and dry juice all through a paper plate and then onto my car seat. Maybe it's just me but I dislike having to wash and dry juice all through a paper plate and then onto my car seat.

I'd also like it if somebody would clarify the instructions for the top of the box would tear. The truth is that we are still in the Stone Age of containers. But we can have truth in labeling and print it like it is. "Line hatch to open." "Insert screw and press." "Use power drill along dotted line."

I realized my error the minute my finger went in. Then there's the miter made in the metal being used in toothpaste tubes. It is what is SUPPOSED to be used when manufacturing "easy twist-off" bottle caps and lids. If you don't use the side of the tube break open and squirt denture floss into your hand?

Then there's the miter made in the metal being used in toothpaste tubes. It is what is SUPPOSED to be used when manufacturing "easy twist-off" bottle caps and lids. If you don't use the side of the tube break open and squirt denture floss into your hand?

Then there's the miter made in the metal being used in toothpaste tubes. It is what is SUPPOSED to be used when manufacturing "easy twist-off" bottle caps and lids. If you don't use the side of the tube break open and squirt denture floss into your hand?

Then there's the miter made in the metal being used in toothpaste tubes. It is what is SUPPOSED to be used when manufacturing "easy twist-off" bottle caps and lids. If you don't use the side of the tube break open and squirt denture floss into your hand?

# Jacoby On Bridge

Jacoby and Son

If any reader thinks that North got a lot of mileage out of his queen and two jacks, we can't argue with him. The only thing we can say of the bid is that it worked. West opened the king of diamonds and shifted to a trump at trick two but the shift came too late. One that diamond had been dealt was no way to keep South from taking 10 tricks.

Of course, there were lots of ways for South to make only nine tricks. It was up to him to plan carefully before playing from dummy. He didn't have to be too careful, just careful enough to play one of dummy's high spades so that he could hold the trick there.

**NORTH**  
♠ Q1096  
♥ 210  
♦ J832  
♣ 95

**EAST**  
♠ A74  
♥ K7  
♦ Q1085  
♣ Q10764

**SOUTH**  
♠ A87  
♥ Q43  
♦ A63  
♣ A885

East-West vulnerable  
West North East South  
1 ♠ Pass Pass 1 ♠  
2 ♠ Pass Pass 2 ♠  
3 ♠ Pass Pass 3 ♠  
4 ♠ Pass Pass 4 ♠  
5 ♠ Pass Pass 5 ♠  
6 ♠ Pass Pass 6 ♠  
7 ♠ Pass Pass 7 ♠  
8 ♠ Pass Pass 8 ♠  
9 ♠ Pass Pass 9 ♠  
10 ♠ Pass Pass 10 ♠  
11 ♠ Pass Pass 11 ♠  
12 ♠ Pass Pass 12 ♠

# Polly's Pointers

By Polly Cramer

DEAR POLLY - I have a great way for getting extra out of trees. My cat went up a tree and we could not get him down. He was up so high our ladder would not reach the limb where he was. We tied a long rope to a box and threw the rope over the limb. We put some food in the box and pulled the rope so the box went up high as the limb of the cat was on. When he jumped into the box to eat the food, we let the box down and my cat was saved.

DEAR POLLY - The camping season is here and our year-old tent has an awful odor. Our sleeping bags have picked up the smell and I wonder if any of the readers have any suggestions for getting rid of this odor. Airing certainly has not helped. -ANNE

DEAR POLLY - If your youngsters complain about wearing wool sweaters because they are itchy, line the sleeves with your old nylon tights. The itchy and time-consuming job of darning Venetian blinds can be simplified enormously by wearing a pair of light weight canvas gloves. Just slide gloves along several slats at one time. -MRS. O. M.

DEAR POLLY - We sewed a meat grinder into the shower curtain to hold a bar of soap.

DEAR POLLY - To keep the bathroom faucets from dripping, wrap a small amount of bath oil on the fixtures after cleaning them. The oil resists water, gives a nice scent to the bathroom and the fixtures will look freshly cleaned longer.

DEAR POLLY - A key pair of tweezers in the kitchen drawer, they are great for lifting and placing tiny decorations on a fancy cake without disturbing the frosting. -FRAN

You will receive a dollar if Polly uses your favorite home-thing. Write to: Polly Cramer, c/o The Sanford Herald, P.O. Box 468, Chicago, Ill. 60680.

Homemakers unite! There are dozens of timesavers contributed by ingenious girls like you in Polly's new book. To get it send name, address with zip code and 75 cents (in coin) or check to POLLY'S HOME-THING MAGAZINE, c/o The Sanford Herald, P.O. Box 468, Chicago, Ill. 60680.

Object of the institute which is offered in cooperation with Florida Atlantic University, according to its director, Philip E. Goldberg, is to help improve instruction and encourage innovation.

Special consultants set to speak during the program are Dr. Franklin Buchanan, vice president of Miami-Dade Junior College; Dr. Harvey Meyer, associate dean of academic affairs at FAU; Mrs. Oneida Carpenter, director of broadcast and educational television at Pensacola Junior College; and Dr. A. N. Beaulieu, Florida Atlantic University professor of computer technology.

**'Dixie' OK In Schools**  
TALLAHASSEE, Fla. (AP) - Bands in Florida's public schools now can play "Dixie" without fear that school boards will stop the music.

A bill forbidding school bands from playing "Dixie" was introduced in the legislature last week. The bill passed the legislature Tuesday. "Dear Edith Thornton McLeod."

# Beauty after Forty

Edith Thornton McLeod

# Training Institute

A three-week DEJC in-service training media institute opens this week at the junior college with 25 members of the staff enrolled.

# Training Institute

A three-week DEJC in-service training media institute opens this week at the junior college with 25 members of the staff enrolled.

# Beauty after Forty

Edith Thornton McLeod

# Beauty after Forty

Edith Thornton McLeod

# Beauty after Forty

Edith Thornton McLeod

# Beauty after Forty

Edith Thornton McLeod

# Beauty after Forty

Edith Thornton McLeod

**SANFORD PLAZA**  
ROCKING CHAIR THEATRE  
322-7507  
A FLOYD THEATRE  
LAST DAY  
2:30 - 7 & 9:15 (M)  
**ROMEO & JULIET**  
Starts Tomorrow  
2:30 - 7 & 9:15 (G)

**My Side of the Mountain**  
A FRESH AND STIMULATING FILM!  
PALATKA/TECHNICAL/PALETTA/POPE

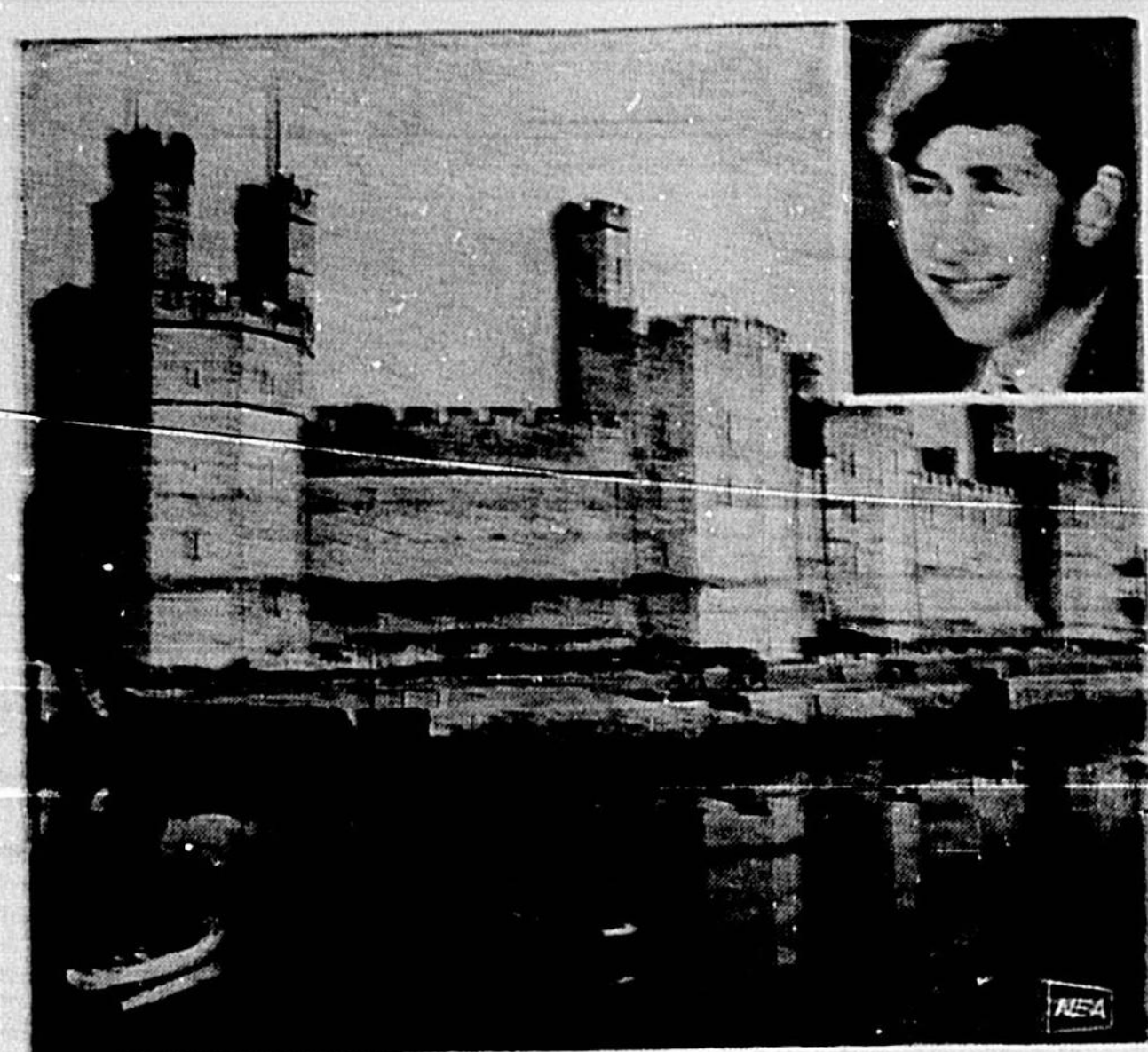
**Mousetalk**  
A FLOYD THEATRE  
LAST DAY  
2:30 - 7 & 9:15 (M)  
50¢  
REG. ADM. UNDER PASS  
THE GHOST & MRS. CHICKEN  
DON KNotts  
SON OF A SMITHGRIDER  
RUSS TAMBLYN  
Color  
"G"

**SEMINOLE Cinema**  
75¢ to 2.00  
Mon. thru Sat.  
Open 10:30  
STARTS TOMORROW  
ANTHONY QUINN  
DAVID JANSSEN  
A modern-day story of faith, courage, and intrigue!  
**THE SHOES OF THE FISHERMAN**  
LAST ANDY GRIFFITH IN "ANGEL IN THE FOYER" 4:30 - 6:30  
DAVI

**Park**  
BEST PICTURE OF THE YEAR!  
WINNER 6 ACADEMY AWARDS!  
RESERVED SEAT PERFORMANCES  
2:00 AND 8:30 DAILY.  
RESERVED SEATS AT PHONE OFFICE BY MAIL OR BOX.  
RESERVATIONS ALSO AVAILABLE AT BILL HARRIS MELODY CORNER, 815 1/2 PARK MALL.

**FREDDIE'S STEAK HOUSE**  
CENTRAL FLORIDA'S OLDEST AND FINEST STEAK HOUSE  
Healy Western Meat Chiseler to Perfection  
WINNER OF GOLDEN SPUR AWARD  
ENTERTAINMENT NIGHTLY IN THE Lanipillar Lounge and Night Room  
Highway 1722 North 5th Park  
Reservations: 838-3265





CAERNARVON CASTLE will be the scene of controversial ceremonies when Prince Charles (left) is invested as Prince of Wales by his mother, Queen Elizabeth. A minority group calling itself the Welsh Nationalists is seeking independence from Britain and is credited with conducting demonstrations against the Prince.

### Police Chief Denies Beating

## Savant's Death Probed

OAKLAND, Calif. (AP) — Police Chief Charles Gahn denies that rough treatment by officers resulted in the death of a college professor who had been arrested on a morals charge.

## Sanford Urges Veto Of Tax Roll Measure

On a motion by Commissioner J. H. Crump, the City Commission voted to refer to the Senate County Tax Collector Troy Ray Jr. in asking Gov. Claude Ritt Jr. to veto House Bill 2001 as it relates to Seneca County.

## Hospital Notes

JUNE 24, 1969  
ADMISSIONS  
Sandra Jackson, Sanford  
Andrew James, Sanford  
William Hall, Sanford  
Mary Daniels, Sanford  
Mary B. Williams, Sanford  
Joan M. James, Sanford

## 1958 Dollar Value Now 79 Cents

# Housewives Perturbed Over HCL

By JACK LERPLER  
NEW YORK (AP) — Most Americans, earning more money today than ever, are dismayed at the inflation that has made their buying power and the disruption it has caused in their plans for the future.



Your chance to save on fine quality  
**TOWNCRAFT 'PIMA PRINCE' UNDERWEAR FOR MEN...REDUCED THRU SATURDAY!**

Reg. 3 for 2.98, NOW **3 FOR 2.44**

MEN'S T-SHIRTS AND BRIEFS. A luxurious blend of 50% Fortrel® polyester/50% pima cotton that stays whiter than ever, keeps its fit, gives a man long, long wear.

## Water Skiers Take To Street

SALT LAKE CITY (AP) — The water skier surprised Mr. Gerald Hicks, but not as much as the pickup truck doing the towing.

## Engineer Review Sessions

Professional Engineer Examination Review Sessions will be offered during the fall of 1969 through the Office for Continuing Education, Florida Technological University.

## Lights Out

SALT LAKE CITY (AP) — "We don't know what happened," said a spokesman as employees sat in a state of shock.

# Crunchy Onion Rings Have A Way With Men



By AILEEN CLAIRE  
Wedding time is here and the bride who is inexperienced in the kitchen can impress her man with crunchy, salty, French-fried onion rings.

## Fish-in-a-Bag Is Tempter

By AILEEN CLAIRE  
NEA Food Editor  
There will be little sleep in Ten Sleep, Wyo. July 31-Aug. 15. That is the time 400 Girl Scouts will meet in an All-States Rendezvous at their new site called Girl Scout National Center West.

## Canned Mushroom Gravy Enhances Party Veal Dish

Once, one felt compelled to load the board to groaning with noodles for guests. Now, however, the idea of a few well-chosen and superbly-seasoned dishes reigns supreme.

## DINNER FOR FOUR

For those hot summer days, use this quick-to-prepare and good first course.

SHOP A&P The store that cares about you!  
"Super-Right" Western Beef California STEAK 89¢  
"Super-Right" Pork Loin Sliced PORK CHOPS 2 to 3 LB. AVG. PKG. 69¢  
"Super-Right" Heavy Western Beef RIB STEAK Close Trimmed Bone In 1.09 LB.

Calif. Roast 79¢  
Swiss Steak 99¢  
Cubed Steak \$1.19  
Veal Steak 89¢  
Sliced Salami 3 6 oz. pkgs. 89¢  
Liver Sausage 49¢  
All Beef Franks 1 lb. pkg. 75¢  
Fish Sticks 10 oz. pkg. 39¢  
Perch Fillets 33¢

SPECIAL SAIL DETERGENT 2 lb. 15 oz. GIANT PKG. 49¢  
EXTRA SPECIAL! Crisco Oil 24 ounce Bottle 39¢

Special SULTANA Mayonnaise OR SALAD DRESSING quart jar 39¢  
PORK & BEANS 89¢ CAN 39¢  
INSTANT COFFEE 3 1/2 LBS. 79¢  
EGG NOODLES 3 1/2 LBS. \$1  
Aurora Tissue 2 2 1/2 PACKS 49¢  
Northern Napkins 10¢  
Bab-o Cleanser 1 1/2 OZ. 10¢

Fresh Fruits & Vegetables!  
Cantaloupes 3 FOR ONLY 99¢  
Watermelons 20 LB. AVG. SIZE VINE RIPPED EACH 89¢  
PEACHES 4 LBS. 99¢  
Fresh Lettuce HEAD 19¢  
FRESH TOMATOES loose or basket lb. 29¢  
ROASTED PEANUTS in the shell bulk lb. 39¢

EXTRA BONUS! CERTIFICATE GOOD FOR ONE GIFT-CHEK WITH THIS CERTIFICATE AND A PURCHASE OF \$7.50 OR MORE  
This Week's GIFT CARD SPECIALS!  
SAUSAGE 3 LB. BAG 79¢  
SLICED BACON 1/2 LB. 85¢  
COFFEE 1 LB. CAN 89¢  
GARLIC POWDER 1/2 OZ. 89¢  
SWEETENER 1/2 OZ. 89¢  
CHEESE SPREAD 1/2 LB. 79¢  
ONIONS 3 LB. BAG 37¢  
SPRAY STARCH 1/2 GAL 49¢  
BUBBLE CLUB 1/2 OZ. 39¢  
TOOTH PASTE LARGE TUBE 49¢  
MAGIC SIZING 65¢  
LYSOL 16 OZ. 89¢

Libby's  
JUICE 4 QUART BOTTLES \$1.00  
Libby Vienna SAUSAGE 4 2 OZ. \$1.00  
Libby Fancy Sliced BEETS 7 1 LB. CANS \$1.00  
Libby Fancy Cut BEETS 8 1 LB. CANS \$1.00  
Libby Ported MEAT 9 3 1/2 OZ. \$1.00  
Libby Corned BEEF 12 OZ. CAN 59¢  
Libby Blue Lake Cut Green BEANS 6 1 LB. CANS \$1.00  
Rosedale All Green LIMAS 6 1 LB. CANS \$1.00

At A&P you save two ways low, low prices plus Plaid Stamps  
50 EXTRA PLAIN COFFEE 10 OZ. \$1.49  
GOOD THRU JUNE 29 6-28-69

CHARGE IT! SANFORD PLAZA OPEN 10 A.M. to 9 P.M. MONDAY thru SATURDAY



PRICES EFFECTIVE THURS., FRI., SAT. JUNE 26-27-28, 1969. QUANTITY RIGHTS RESERVED.

WITH THE SUN MAKING THE SCENE 'TIL 8:p.m.

**it's PATIO PARTY TIME!**

THE JULY READER'S DIGEST MATCH-THE-SUN SWEEPSTAKES WIN FREE GROCERIES FOR ONE WEEK WINNING SUN NOW ON DISPLAY



**ALL GRINDS FRESH COFFEE**  
**Chase & Sanborn**  
 1-lb. can  
**49¢**  
 LIMIT 1 PLEASE WITH OTHER PURCHASES OF \$5.00 OR MORE (EXCLUDING CIGARETTES).

AMERICA'S FAVORITE SALAD DRESSING, KRAFT'S  
**Miracle Whip**  
 quart jar  
**39¢**  
 LIMIT 1 PLEASE WITH OTHER PURCHASES OF \$5.00 OR MORE (EXCLUDING CIGARETTES).

WITH BLUE MAGIC WHITENERS  
**King Size Cheer**  
 king size  
**99¢**  
 LIMIT 1 PLEASE

- Assorted Flavors Fruit Drinks **Hi-C Drinks** ... 3 46-oz. cans **89¢**
- Del Monte Light Meat **Chunk Tuna** .... 4 6 1/2-oz. cans **\$1**
- Del Monte Whole Kernel Family Style **Golden Corn** ... 5 #303 cans **\$1**
- Del Monte Cream Style **Golden Corn** ... 5 #303 cans **\$1**
- Del Monte Tender **Garden Peas** ... 5 #303 cans **\$1**
- F & P Flavor Perfect, Bartlett **Pear Halves** ..... #214 can **39¢**
- Susweet Natural **Prune Juice** ..... quart bottle **49¢**
- Kraft's French or Miracle French **Dressing** ..... 8-oz. bottle **33¢**
- Armour's Snackin' Good Vienna **Sausage** ..... 2 5-oz. cans **49¢**
- Cut-Rite Convenient **Wax Paper** ..... 125-ft. roll **31¢**

**FREE!**  
 32-oz. bottle of Penny Saver Dish Detergent with the purchase of...  
 Skip-Terrace **Cleaner** ..... quart can **\$1.15**  
 or  
 Skip-Terrace **Sealer** ..... quart can **\$1.49**

- Borden's Assorted Flavors **Borden's Sherbets** 5 per pkg. **\$1**
- Sunshine Orbit **Crepe Sandwich** 16-oz. bag **51¢**
- F. F. V. Caramel Chip or **Oatmeal Cookies** 11-oz. pkg. **39¢**
- Lykes Delicious Corned **Beef Hash** ..... 3 16-oz. cans **\$1**
- Lady Scott **Facial Tissue** ..... 200-ct. pkg. **27¢**
- Shortening Special **Swift'ning** ..... 3-lb. can **49¢**
- Skimmed Milk **Carnation** ..... tall can **10¢**

SWIFT'S PREMIUM PROTEN GOV'T. INSPECTED HEAVY WESTERN BEEF SALE  
 the BEEF that NEEDS LESS COOKING TIME!

Swift's Premium Proten Boneless **Imperial Roast** ... lb. **99¢**  
 Swift's Premium Proten Boneless English-Cut **Beef Roast** ..... lb. **\$1.09**  
 Swift's Premium Proten Denver Oven **Beef Roast** ..... lb. **\$1.29**  
 Swift's Premium Proten **London Broil** ..... lb. **\$1.29**  
 Swift's Premium Proten Grillin' Good! **Chuck Steaks** ..... lb. **89¢**  
 Swift's Premium Proten **Beef Short Ribs** ... lb. **59¢**

**Beef Pot Roast** per lb. **85¢**

PLUS 100 EXTRA S&H GREEN STAMPS WITH COUPON AND PURCHASE OF ANY BEEF ROAST 3-lb. OR OVER!

**Pork Roast** per pound **79¢**

- From Our Meat Dept.*
- Swift's Premium Fresh **Pork Steaks** ..... lb. **79¢**
  - Swift's Premium Brown Sugar Cured **Sliced Bacon** ..... 1-lb. pkg. **79¢**
  - Swift's Premium Smoked Boneless **Hostess Hams** ..... lb. **\$1.19**
  - Swift's Premium Pork Sausage **Swift's Franks** ..... 12-oz. pkg. **69¢**
  - Swift's Premium Sausage **Brown 'N Serve** ..... 8-oz. pkg. **63¢**
  - Swift's Premium Sandwich Spread **Braunschweiger** ..... 8-oz. can **35¢**
  - Swift's Premium Water-This **Sliced Meats** ..... 3-oz. pkg. **35¢**
  - Tommy's Sausage **Bag Sausage** ..... 1-lb. pkg. **79¢**
  - Casaletto's Delicious Corned **Braunschweiger** ..... 1-lb. can **49¢**
  - Hormel's Orange Sausage **Weiners** ..... 24-oz. can **89¢**
  - Swift's Premium Assorted Sliced **Cold Cuts** ..... 8-oz. can **49¢** (Pillsbury & Piments, Olive & Piments, Best Bologna)
- From Our Dairy Dept.*
- Bullman's German-Dry **Bologna** ..... lb. **89¢**
  - South-Waterin, Kitchen-Proof **Potato Salad** ..... lb. **39¢**
  - Hot Weather Treat! **Baked Beans** ..... lb. **39¢**
  - Kraft's Crocker Barrel **Sharp Cheddar** ..... 79¢
  - Miss Wisconsin Cheese **Round Burger Slices** ..... 41¢
  - Wisconsin Cheese Bar Ind. Wrapped **American Cheese** ..... 12-oz. pkg. **67¢**
  - Dairy-Fresh **Cottage Cheese** ... 5-lb. exp. **59¢**
  - Breakfast Club **Margarine** ..... 1-lb. can **15¢**
  - Kraft's Margarine **Regular Parkay** ... 1-lb. can **29¢**
  - Kraft's Delicious **Diet Soft Parkay** ... 1-lb. can **45¢**
  - Spreads Richly **Imperial Margarine** ... 1-lb. can **45¢**
  - Pillsbury's **Cinnamon Rolls** ... 9 1/2-oz. can **33¢**
  - Assorted Flavors **Breakstone's Yogurt** half pint **15¢**
  - Safe Assorted **Cheese Spreads** ... 3 1/2-oz. exp. **29¢**

BATHROOM TISSUE ASSORTED COLORS  
**Soft Weve**  
 2-roll pkgs.  
**4\$1**

ABSORBENT ASSORTED COLORS  
**Scott Towels**  
 large roll  
**29¢**

**PUBLIX** MARKETS

SANFORD PLAZA Hwy. 17-92 and Osora Rd. Sanford  
 HOURS: MON., WED., SAT. 8:30-7:00 THURS., FRI., 8:10-9:00  
 CLOSED SUNDAY

SEMINOLE PLAZA Casselberry  
 HOURS: MON. THRU SAT. 9 A.M. - 9 P.M.  
 CLOSED SUNDAY

Don't forget, redeem your **Publix Coupon** #8 (from full color folder)

Good only through July 2 for with purchase of \$5 or more, exclusive of cigarettes. **FREE MASTERPIECE** Don't miss a chance to collect your FREE reproductions of famous paintings!

**PUBLIX** MARKETS

BE SURE TO CLIP YOUR COUPON FOR THE 8th WEEK AND REDEEM IT FOR THE FREE 11" x 14" PICTURE. (with purchase of \$5 or more, excluding cigarettes) LIMIT ONE COUPON PER FAMILY, PLEASE!

100 **EXTRA Green Stamps** with this coupon and purchase of:

- Any Beef Roast 3-lb. or over. (Expires Sat. June 28, 1969)
- Glenn Tenth Pasta 6 1/2-oz. tubs. (Expires Sat. June 28, 1969)
- Scope Mouth Wash 12-oz. bot. (Expires Sat. June 28, 1969)
- Head & Shoulders Dandruff Shampoo any size, any style. (Expires Sat. June 28, 1969)
- Assorted Flavors Betty Crocker Cake Mixes three regular pkgs. (Expires Sat. June 28, 1969)
- Nestle Instant Low-Cal Tea with Lemon 8-oz. jar. (Expires Sat. June 28, 1969)
- Freezer Queen Veal Parmegian with Tomato Sauce 2-lb. pkg. (Expires Sat. June 28, 1969)
- McCormick's Pure Black Pepper 4-oz. can. (Expires Sat. June 28, 1969)

CLIP and USE THESE COUPONS



### Blecker Street Antipasto

**ITALIAN BUFFET**  
This easy-to-serve menu is delightful for company.  
Blecker Street Antipasto  
Lasagna  
Strawberry Cream Cake  
BLECKER STREET ANTIPASTO  
bunch watercress, washed and dried  
1/4 pound thinly sliced Genoa salami, casing removed  
can (3 1/2 ounces) boneless and skinless sardines  
can (6 ounces) marinated artichokes  
can (7 ounces) pimientos, drained and halved  
Flat anchovies (from a 2-ounce can)  
1 jar (8 ounces) large pimiento-stuffed green olives  
Cut away only very heavy ends from watercress. Circle a large platter with most of the cream. Add salami, covering stems of cream with it. Turn artichokes (with their marinade) into a small shallow bowl and surround with pimiento. Place an anchovy on each pimiento. Place bowl in center of platter. Open can of sardines, removing lid; place at one side of bowl and hide sides of can with short sprigs of cream. Arrange olives at other side of bowl. Serve with crusty French bread and sweet butter. Makes six to eight servings.

A small jar of pine nuts, tucked away on a refrigerator shelf to stay fresh, inspired us. With some cold chicken, a jar of real mayonnaise and the other makings for plain chicken salad at hand, we had an urge to add something else as a surprise.  
"You're guessing right." The pine nuts went into the salad—and a deliciously interesting contribution they made. Here's the recipe we used.

**CHICKEN PINE NUT SALAD**  
1/2 cup real mayonnaise  
1/4 cup commercial sour cream  
2 teaspoons lemon juice  
1/2 teaspoon salt  
1/2 teaspoon white pepper  
2 cups diced cooked chicken, packed down  
1/2 cup thinly sliced celery  
2 tablespoons minced parsley  
Salad greens  
Paprika  
In a medium mixing bowl beat together with fork the mayonnaise, sour cream, lemon juice, salt and pepper.  
Add the chicken, celery, 1/4 cup of the pine nuts and the parsley; mix well.  
Arrange on salad greens; sprinkle with paprika and then with the remaining 1/4 cup pine nuts.  
Makes four servings—about 1/2 cup each.

**THE BRIDE COOKS SUPPER**  
If your groom enjoys food with oriental flavor, he's bound to like this dish.  
Chicken Wings  
with Bean Sprouts  
Steamed Rice  
Crawfish and  
Cucumber Salad  
Frosted Cake Squares  
Beverage

**CHICKEN WINGS WITH BEAN SPROUTS**  
2 tablespoons salad oil, not olive  
8—about 1 1/2 pounds—chicken wings  
1/4 cup Japanese-type soy sauce  
1/4 cup water  
1 tablespoon sugar  
1 large scallion—green onion—chopped fine, green top included  
1 large clove garlic, peeled and minced  
1 can—1 pound—bean sprouts, drained and rinsed  
In an eight-inch skillet heat the oil. Add wings and brown over moderate heat on both sides. Pour off oil and add soy sauce, water, sugar, scallion and garlic. Leave uncovered and turn heat low; simmer, turning a few times, until tender.  
Browning and simmering should take from 20 to 30 minutes. Remove wings, add bean sprouts and mix well. Heat quickly and briefly. Arrange wings over bean sprouts and serve with rice. Makes three servings.

In 1847, the American Congress authorized the postmaster general to use postage stamps for mailing purposes. The five-cent stamp, with a picture of Ben Franklin, was used up to 300 miles and the ten-cent stamp, with a picture of George Washington, was used for distances over 300 miles and excess weight.

**BRIDES BUDGETS Go Further!**

# PARK AND SHOP

**ALL WEEK LONG!**  
THURS. JUNE 26 THRU WED. JULY 2  
QUANTITY RIGHTS RESERVED  
**HEAVY WESTERN BEEF GOV'T. INSPECTED**

ALL-PURPOSE DETERGENT  
**"ENERGY"**  
GIANT BOX **37¢**  
-OR-  
YOUR CHOICE

ENZYME ACTION DETERGENT  
**"GAIN"**  
GIANT BOX **47¢**  
LIMIT: ONE OF YOUR CHOICE, WITH YOUR \$5, OR MORE, FOOD ORDER, PLEASE.

"SOFT-WEVE" TOILET TISSUE  
2-ROLL PKG. **25¢**  
LIMIT: 2 (2 ROLL PKGS.) WITH YOUR \$5, OR MORE, FOOD ORDER, PLEASE.

"SEA-Z" LIGHT CHUNK STYLE TUNA  
NO. 1/2 CAN **29¢**  
LIMIT: 4 WITH YOUR \$5, OR MORE, FOOD ORDER, PLEASE.

"EVERFRESH" BAKERY DESSERT SHELLS  
PKG. OF 6 **19¢**

"CORN-FED" RIB WHOLE-HALF Pork Loin Roast  
LB. **58¢**  
VALUES GALORE

"HAPPY KIDS" 12-OZ. JAR PEANUT BUTTER.... **39¢**  
"SUN-AID" 2-LB. JAR APPLE JELLY..... **39¢**

"GOLDEN YELLOW" BANANAS  
LB. **10¢**

"VINE RIPE" LARGE CANTALOUPE..... 3 FOR **89¢**  
"JUICY" CALIFORNIA LEMONS..... DOZEN **39¢**  
"FRESH" CRISP LETTUCE..... 2 HEADS **39¢**  
"MIX-OR-MATCH" COOL-IT DRINKS... 3 1/2 GALLONS **79¢**

VALUES GALORE "EVERFRESH" POTATO CHIPS  
9 OZ. TWIN-PAK **38¢**

ASST FLAVORS "RITZ" DRINKS  
12-OZ. CAN **7¢**

"SHURFINE" CATSUP  
14 OZ. BTL. **19¢**  
Quality MEATS

- "OLD FASHION" COUNTRY BACON... THICK SLICED... LB. **58¢**
- "COPELAND" FRESH LEAN PORK ROAST..... LB. **48¢**
- "FLA. GRADE A" ROASTING CHICKEN... LB. **38¢**
- "FAMILY-PAK" PORK CHOPS..... LB. **78¢**
- "IMPORTED" QUICK FROZEN LEG-O-LAMB..... LB. **68¢**
- "EXTRA-LEAN" FRESH GROUND CHUCK..... LB. **78¢**
- "FLA. GRADE A" (WITH RIBS) FRYER BREASTS..... LB. **48¢**
- "FLA. GRADE A" FRYER THIGHS • LEGS... LB. **58¢**
- "PARK & SHOP" OLD FASHION HOME MADE PORK SAUSAGE..... LB. **58¢**
- "LYKES" GEORGIA SMOKED SAUSAGE... LB. **78¢**
- "LYKES" SUGARCREEK WIENERS... ALL MEAT... 12-OZ. PKG. **49¢**
- "LYKES" BUDGET SLICED BACON..... LB. **53¢**
- "ARMOUR STAR" CANNED HAM... 3 LB. CAN **\$2.88**
- "FLA. GRADE A" FAMILY-PAK FRYERS..... 5 LB. **\$1.99**
- "COPELAND" MIX-OR-MATCH • BOLOGNA • OLIVE • SOUSE • LIVER CHEESE... 3 8-OZ. PKG. **89¢**
- "LUNCHEON MEAT"..... 3 8-OZ. PKG. **89¢**

FROZEN FOODS "SLENDA SUE" ASST. FLAVORS ICE MILK  
HALF GAL. **38¢**  
LIMIT: 2 WITH YOUR \$5, OR MORE, FOOD ORDER, PLEASE.

- "MORTON" POT PIES..... 8-OZ. EACH **19¢**
- "BIRD'S EYE" COOL WHIP..... QUART CTN. **63¢**
- "FROZEN" FRENCH FRIES.... 2 9-OZ. PKGS. **25¢**

"SHURFINE" ALL GRINDS COFFEE  
LB. CAN **37¢**

"FOLGER'S" ALL GRINDS COFFEE  
LB. CAN **47¢**

GOLD MEDAL MAYONNAISE QUARTS  
**37¢**

**BEEF** SIRLOIN ROUND • CLUB SWISS STEAK  
FAMOUS "LAZY AGED" BEEF  
OUR FAMOUS! "LAZY-AGED BEEF" IS JUICY • LEAN • TENDER AND STILL... THE SAME  
LOW LOW PRICES  
LB. **88¢**  
HEAVY WESTERN BEEF GOV'T. INSPECTED

CHUCK ROAST  
HEAVY WESTERN BEEF GOV'T. INSPECTED  
LB. **45¢**

FRESH "100% PURE" GROUND BEEF  
4 LBS. **\$1.98**

"TENDER" RIB ROAST LB. **88¢**  
"JUICY" RIB STEAK LB. **78¢**

- "BEEF" SHORT RIBS..... LB. **48¢**
- "BAR-B-QUEING" SHORT RIBS..... LB. **58¢**
- "LEAN MEAT" BRISKET STEW... LB. **38¢**
- "LEAN" CHUCK-POT ROAST... LB. **58¢**
- "BONELESS" POT ROAST..... LB. **88¢**
- "TENDER" ENGLISH-CUT ROAST... LB. **88¢**
- "TENDER" CHUCK STEAK.... LB. **68¢**
- "JUICY" FAMILY STEAK... LB. **78¢**
- "MEATY" SHOULDER ROAST... LB. **78¢**

ALL-PURPOSE "KRAFT" OIL  
24-OZ. BTL. **37¢**  
LIMIT: ONE WITH YOUR \$5, OR MORE, FOOD ORDER, PLEASE.

"SHURFINE" PLAIN OR • SELF RISING FLOUR  
5-LB. BAG **39¢**  
LIMIT: ONE WITH YOUR \$5, OR MORE, FOOD ORDER, PLEASE.

"SUNSHINE" KRISPY CRACKERS  
LB. BOX **34¢**

PARK AND SHOP  
All Stores OPEN 7 DAYS A WEEK

DAIRY FOODS "MRS. FILBERT'S" QUARTERS OLEO  
LB. PKG. **25¢**  
LIMIT: 3 WITH YOUR \$5, OR MORE, FOOD ORDER, PLEASE.

VALUES GALORE "SHURFINE" FRUIT COCKTAIL  
NO. 303 CAN **25¢**

DAIRY FOODS FLORIDA GRADE "A" EGGS  
MEDIUM **99¢**

"SHURFINE" MIX-OR-MATCH!  
EARLY HARVEST PEAS WHOLE • CREAM CORN CUT GREEN BEANS  
NO. 303 CANS **\$1.00**

SANFORD  
★ 25th & Park Ave.  
• MON-THUR... 8AM-7PM  
• FRI & SAT... 8 - 9  
• SUNDAY... 8 - 6

SANFORD  
★ 4th & Sanford Ave.  
• MON-THUR... 8AM-7PM  
• FRI & SAT... 8 - 9  
• SUNDAY... 8 - 6

SANFORD  
★ 1100 W. 13th St.  
• MON-THUR... 8AM-7PM  
• FRI & SAT... 8 - 9  
• SUNDAY... 8 - 1

### English Version of Irish Tea

By CECILY BROWNSTONE AP Food Editor  
FOLGER TEA  
This is an English version of a famous Irish tea bread.  
Joan Brunsell's Barm Brack Tea

**JOAN BRUNSSELL'S BARM BRACK TEA**  
1 cup raisins  
1/2 cup currants, rinsed in hot water and drained  
1 cup sliced prunes, about 20, from a 12-ounce package of the pitted fruit  
1/2 cup sliced pitted dates, about 12, in 4 large soft pulled figs.  
1 cup dark brown sugar, not packed down  
1 cup cold strong tea  
2 cups unsifted flour, stir to aerate before measuring  
3 teaspoons baking powder  
1/2 teaspoon salt  
1 large egg  
In a medium mixing bowl mix together the raisins, currants, prunes, dates, brown sugar and tea. Let stand overnight. On wax paper thoroughly stir together the flour, baking powder and salt. To fruit mixture, add unbeaten egg and flour mixture and mix well with a spoon. Turn into a buttered square cake pan, 8 by 8 by 2 inches, and spread evenly. Bake in a preheated 325-degree oven until cake tester inserted in center comes out free of batter—about one hour. Turn out on wire rack, turn right side up and cool. Cut in half. To serve, slice each section crosswise and butter slices. NOTE: To make the tea, use three tea bags and one and a quarter cups boiling water. Let stand until cold. Then remove tea bags and use one cup of the brew.  
Two cups regular, not cake, and strong flour may be substituted for the flour, baking powder and salt.

**LADIES' LUNCH**  
Here is a different salad with which to surprise your guests.  
Sliced Smoked Turkey  
Zucchini Salad  
Hot Rolls  
Pate Four  
ZUCCHINI SALAD  
4, about 2 1/2 pounds, zucchini peeled and sliced fairly thin  
1 cup boiling water  
1 teaspoon salt  
1/2 teaspoon sugar  
1/4 cup olive oil  
2 tablespoons wine vinegar  
1/4 teaspoon white pepper  
4 tablespoons grated Parmesan cheese  
There should be about five and a half cups of the sliced zucchini. Boil it with the water and one-half teaspoon of the salt, covered, just until tender—several minutes. Then drain and cool. Beat together the remaining half teaspoon salt; the sugar, oil, vinegar, pepper and two tablespoons of the Parmesan. Mix with zucchini, cover and chill briefly. At serving time arrange zucchini and the marinade on salad greens and sprinkle with remaining two tablespoons Parmesan cheese. Makes six servings.

**FAMILY SUPPER**  
Take advantage of fresh fruit for a delightful compote.  
Rangtop Macaroni and Cheese  
Bacon Strips  
Jolly Fruit Cup  
Green Salad  
Beverage  
JULY FRUIT CUP

1 grapefruit  
1 orange  
1 peach, peeled and sliced  
1 cup cherries, pitted  
1 cup blueberries  
Peel grapefruit and orange so no white membrane remains. Then cut sections away from dividing membranes. Mix with remaining fruit. Makes four servings. Sugar to taste may be added if desired.

**FIGURE-RIGHT TUNA PIMIENTO SALAD**  
1 can—about 8 ounces—of solid white-albacore-tuna, packed in vegetable oil  
2 tablespoons sweet pickle relish, undrained  
1 can—4 ounces—pimientos, drained  
Shredded lettuce, as much as you like  
Turn tuna with its oil into a small bowl. Flake it and mix in the pickle relish. Reserve two of the pimientos. Dice the remaining pimientos and add to tuna mixture.  
Fill the whole pimientos with as much of the tuna mixture as they will hold and center each one on a bed of shredded lettuce on a salad plate. Scatter remaining tuna mixture over lettuce. Slices two large servings.



### Moist Cake Mixed Like Muffins

By CECILY BROWNSTONE  
AP Food Editor

**PORCH REFRESHER**  
Here's some deliciously moist cake mixed in a way used for muffins.

Hawaiian Orange Cake  
1 cup sifted cake flour  
1/2 teaspoon baking soda  
1/4 cup plus 2 tablespoons sugar  
1 large egg

3/4 cup butter  
1/4 pound-1 stick-butter, melted and slightly cooled  
Grated rind-2 to 3-teaspoons of 1 medium orange  
1/2 cup freshly squeezed orange juice-2 medium juicy oranges

Butter a round glass cake dish 1 1/2 by 1 1/2 inches. On wax paper sift together the cake flour, baking soda and half cup sugar. In a medium mixing bowl beat egg until thickened and pale lemon color. Add buttermilk and butter and beat to combine.

Add sifted flour mixture and fold in with a rubber spatula just until moistened-about 30 strokes; do not beat smooth.

Turn mixture into a prepared cake dish and bake in preheated 350-degree oven until cake tester inserted in center comes out clean-25 minutes.

Meanwhile, stir together two tablespoons sugar, orange rind and orange juice until sugar dissolves. The moment cake comes out of oven slowly and evenly pour orange-juice mixture over it and let it stand five minutes. Cut into wedges and remove carefully with wide server or spatula. Serve at once, while cake is hot, on dessert plates with forks. Makes six servings; if cake is served cold, let stand in cake dish and cut as needed.



**\$25,000**  
1st PRIZE **\$10,000** IN CASH  
2nd PRIZE **\$3,000** IN CASH



**Shortening**  
**CRISCO 3 59¢**  
ASTOR SHORTENING 3 LB. CAN 49¢  
Limit 1 Shortening of Your Choice With \$3.00 or More purchase excluding cigarettes

- 15-oz. FRISKIES FISH, LIVER OR CHICKEN FLAVOR **Cat Food.....10/\$1.**
- 14-oz. DEEP SOUTH Apple, Apple-Banana, Apple-Cherry, Apple-Rose, or Apple-Strawberry **Jelly.....4/\$1.**
- 24-oz. PK. ARKOW WHITE OR ASSORT. BATHROOM **Tissue.....4/\$1.**
- No. 1 Can CASTLEBERRY **Hot Dog Chili 4/\$1.**
- No. 5 Can VAN CAMP VIENA **Sausage.....5/\$1.**
- 200-CL. PK. WHITE OR ASSORT. FACIAL TISSUE **Kleenex.....4/\$1.**
- No. 303 Can THIRTY MAID CAUF. **Tomatoes.....5/\$1.**
- No. 25 Can THIRTY MAID BAKLETTS **Pears.....3/\$1.**
- 1-oz. BLACK BERRYBORT **Mints.....4/\$1.**

**ASTOR All Grinds**

**COFFEE 39¢**  
Limit 1 Coffee of Choice w/ES. or more purchases Exclud. Cigarettes

CHASE AND SANBORN COFFEE LB. 49¢

**MEDIUM EGGS 3 \$1**  
CL. BLUE, WHITE OR COLD WATER ABOVE Limit 1 Dozen of choice w/ES. or more purchases including cigarettes

**DETERGENT.....39¢**  
CL. COLD POWER Limit 1 Dozen of choice w/ES. or more purchases including cigarettes

**DETERGENT.....49¢**  
20-oz. THIRTY MAID Limit 2 w/ES. or more purchases including cigarettes

**CATSUP.....19¢**  
16-oz. Can ALL FLAVORS

**CHEK DRINKS 15/\$1.**

**TUNA 29¢ Drinks 5/\$1**  
No. 5 Can STARBUCK LIGHT MEAT Limit 3 w/ES. or more purchases including cigarettes  
No. 5 Can BAKER'S LIGHT MEAT Limit 3 w/ES. or more purchases including cigarettes

- 4-oz. DIAL SPRAY **Deodorant.....59¢**
- 12-oz. CRACKIN' GOOD 5-4-12 **Wafers.....3/\$1.**
- 20-oz. DINE DARLING PRESTIGE **Bread.....29¢**
- 14-oz. DINE DARLING LONG FRENCH LOAF **Bread.....2/49¢**
- 8-oz. DINE DARLING RAISIN **Cinn. Buns 3/89¢**
- 8-oz. DINE DARLING **Pecan Buns 3/89¢**
- 8-oz. DINE DARLING FILLED **Fruit Buns 3/89¢**
- 14-oz. BLUE AROW **Cleanser.....2/25¢**
- 20-oz. CHARCOAL **Briquettes.....89¢**
- ALL STRAINED WHEATMEAL **Baby Food.....9¢**
- 15-oz. DINE DARLING Lemon, Yellow, White or Dark Food **Cake Mix.....3/89¢**
- SOUTHERN SELF-RISING OR PLAIN **Flour.....5 BAG 39¢**
- 25-oz. CALIGATE 100 **Mouthwash....99¢**
- 40-oz. KOTEX **Tampons.....88¢**

**Art & Frame Fair**

**2nd Week Coupon**  
VALID ONLY JUNE 26 - July 2  
**FREE!**  
ONE 11"x14" PRINT  
with any purchase of \$5 or more (must be printed by law)  
LIMIT ONE COUPON PER FAMILY  
THIS COUPON 99¢

**FINE ART REPRODUCTIONS**  
139 Masterpieces by the world's greatest artists, can now enhance your own home! Choose from among the most famous paintings of all time!

**Additional prints available SAVE 50%**

- 16-oz. BLUE BONUS 9-oz. King Size **Detergent \$1.63**
- 16-oz. SUNSHINE **Crispy Crackers . . . 37¢**
- FRITOS CORN CHIPS . . . 6-oz. 28¢ . . . 39¢
- 34-oz. WASHIN **Bowl Cleaner . . . 55¢**
- 16-oz. WHITELITE **Spray Cleaner . . . 69¢**
- No. 303 Can SUPERFINE **Limogrands . . . 23¢**
- 16-oz. WHITELITE **Tide Detergent . . . 91¢**
- 16-oz. WHITELITE **Duz Detergent . . . 95¢**

**50 EXTRA TOP VALUE STAMPS**

- 28-oz. ASTOR Cooking Oil
- 16-oz. SUNSHINE MYSOINOLINE
- 16-oz. SUNSHINE Bar & Soap
- 16-oz. SUNSHINE Bar & Soap
- 100 EXTRA TOP VALUE STAMPS
- 100 EXTRA TOP VALUE STAMPS
- 100 EXTRA TOP VALUE STAMPS
- 100 EXTRA TOP VALUE STAMPS

**PRICES GOOD ALL WEEK...**

# SWEET STAKES



**\$2,000 IN CASH** 50 WINNERS **\$100 IN CASH** 100 WINNERS **\$50 IN CASH**

**CHUCK ROAST 59¢**  
W-D BRAND USDA CHOICE CORN FED

- Quantity Rights Reserved-Prices Good All Week Thurs. thru Wed. June 26 - July 2
- 7-1/2 LB. W-D BRAND GROUND ALL MEAT STEW OR GR. CHUCK **\$1.99**
  - W-D BRAND LEAN GROUND...No. 200 Stamps w/ Coupon **BEEF.... 10 LBS. \$4.89**
  - W-D BRAND LEAN GROUND...No. 100 Free Stamps w/ Coupon **BEEF.....5 LBS. \$2.49**
  - USDA CHOICE W-D BRAND CORN FED BEEF CHUCK **STEAK..... LB. 69¢**
  - USDA CHOICE W-D BRAND CORN FED SHOULDERS OR CALIFORNIA **ROAST..... LB. 89¢**
  - USDA CHOICE W-D BRAND CORN FED BEEF **STEAKS..... LB. \$1.19**
  - 11-1/2 LB. SWIFT PREMIUM CORNISH **GAME HENS.....2/\$1.59**
  - 1-1/2 LB. BOBEN'S BIG TEN **CANNED BISCUITS.....2/41¢**
  - 12-oz. SUPERBAND SLICED INDIVIDUALLY WRAPPED AMERICAN **CHEESE FOOD.....65¢**
  - 8-oz. RUFFLEBRAND **COTTAGE CHEESE.....2 LBS. 59¢**
  - 14-oz. PALMETTO FARMS **PIMENTO CHEESE.....59¢**
  - TANWOOD LAB. 8-oz. 10-oz. 4-oz. 5-oz. **SLICED BOLOGNA.....29¢**
  - 12-oz. COPOLAND **ALL MEAT FRANKS.....49¢**
  - BOB WHITE REG. SLICED **BACON 69¢**
  - W-D BRAND QUICK FROZEN CURED BEEF **STEAKETTES.....2 LBS. \$1.89**
  - TASTE OF SEA BONELESS PERCH **FISH FILLETS..... LB. 39¢**
  - 17-1/2 LB. FRENCH FRIED **FISH STICKS.....99¢**
  - 15-oz. BOBEN'S BIG TEN **CANNED BISCUITS.....2/41¢**
  - 10-oz. SHIRLAND VICTORY SLICED CORNED BEEF **CANNED HAM.....\$1.39**
  - 10-oz. STARBUCK CRACKER BAKED MELLOW **SLICED BOLOGNA.....39¢**
  - 10-oz. STARBUCK CRACKER BAKED MELLOW **STICK CHEESE.....69¢**

**GEORGIA RED SWEET AND JUICY**

**Peaches 5 lbs. \$1**

**CANTALOUPE.....3/\$1.**

- LARGE RED RIPE LARGE **Watermelons 79¢**
- WASH. STATE EXTRA FANCY RED **Bing Cherries 49¢**
- WHITE SEEDLESS **Grapes..... 1¢ 39¢**
- LARGE FRESH HEADS **Lettuce.... 2 HEADS 39¢**
- VINE RIPE **Tomatoes.....LB. 39¢**
- LARGE FRESH HEADS **Cabbage... 2 HEADS 39¢**
- FANCY GOLDEN BANTAM **Corn.....10 EARS 69¢**
- HAR OLD THIRTY MAID GRAPE OR ORANGE **Drink.....2/79¢**

**OCOMA MEAT Dinners 3 FOR \$1**

- Quarts DIXIE WHIP Dessert...No. 100 Free Stamps w/ Coupon **Topping.....2/\$1**
- 18-LB. POLY BAG FRENCH SHOESTRING FAT **Potatoes..... 3/\$1**
- ESKIMO ICE CREAM **Sandwiches 2/\$1**
- 21-LB. BANQUET FRIED **Blackberries 2/\$1**
- 10-oz. ASTOR **Cut Corn.....5/\$1**
- 10-oz. ASTOR **Green Peas 5/\$1**
- 10-oz. ASTOR PEAS & CARROTS OR **Baby Limas 5/\$1**
- 10-oz. MORTON BLUEBERRY **Fish Cakes... 4/\$1**
- 10-oz. MORTON BLUEBERRY **Muffins.....39¢**
- 8-oz. MORTON SPAGHETTI & MEAT OR CHEESE **Coffee Rich..4/\$1**
- 10-oz. MORTON SPAGHETTI & MEAT OR CHEESE **Macaroni....4/88¢**

- Pkg. HOWARD JOHNSON'S OR STOFFER'S **Macaroni & Cheese 39¢**
- DEL MONTE **Fruit Cocktail . . . 31¢**
- No. 303 Can DEL MONTE WHOLE **Spiced Peaches . . . 35¢**
- No. 303 Can DEL MONTE **Tomato Wedges . . . 35¢**
- 4-CZ. SEGO **Instant Mixes . . . 73¢**
- 13-oz. COMPLIMENT Chick Supreme Sauce, Pork Sauce or Swiss **Steak Sauce . . . 39¢**
- SAFEGUARD . . . Reg. Size 2/33c . . . Both Size **Hand Soap . . . 2/45¢**
- Reg. Size 41c . . . 4-oz. Size 91c . . . King Size **Bold Detergent . . . \$1.53**
- 1-LB. MRS. FILBERTS SOFT GOLDEN OR SOFT **Whipped Oleo . . . 2/79¢**

**100 EXTRA TOP VALUE STAMPS**

- 28-oz. ASTOR Dessert Topping
- 10-LB. POLY BAG Ground Beef
- 10-LB. POLY BAG Ground Beef
- 10-LB. POLY BAG Ground Beef
- 100 EXTRA TOP VALUE STAMPS
- 100 EXTRA TOP VALUE STAMPS
- 200 EXTRA TOP VALUE STAMPS

**Thursday Thru Wednesday**

### Honey Oat Loaf Perks Up Menu

By CECILY BROWNSTONE  
AP Food Editor

**RUFFET SUPPER**  
Use this homemade bread to perk up a menu!

Baked Ham Sliced Bowl  
Emma R. Law's Honey Oat Loaf Beverage  
Fruit Compote

1 1/2 cups warm water  
1/4 cup honey  
1 package active dry yeast  
2 teaspoons salt  
2 egg yolks

1 1/2 cup salad, not allow oil  
1 cup nonfat dry milk solids  
1 cup quick-cooking rolled oats  
4 cups sifted flour

In a large bowl mix together the water and honey. Then sprinkle in the yeast and let stand 10 minutes. Add remaining ingredients except flour and then with a rubber spatula gradually work in flour until well blended—mixture will be very thick. Cover and let stand in a warm draft-free place for 30 minutes. With a spatula work dough well again then cover and let rise as previously until doubled—about 75 minutes.

Turn out on floured board and cut in half patting each half into loaf shape—loaf will be very soft. Drop each half into an oiled loaf pan, 8 by 4 by 1 1/2 inches and turn to oil top. Let rise as previously until doubled—about half inch from top of pan.

Place in cold oven with shallow pan of water on rack underneath, setting over at 350 degrees and bake for 45 minutes. Turn out very gently on rack, bread will be very soft, turning right side up to cool.

### SUNDAY BRUNCH

Strawberry fanciers will go for this!  
Puffy Omelet with Chicken Liver and Mushroom Filling  
Broiled Tomatoes Hot Blackout  
Brunch Shortcake Beverage  
**BRUNCH SHORTCAKE**  
1/2 cup commercial soft cream  
2 tablespoons plus 1/4 cup firm butter  
1/2 cup packed light brown sugar  
1 tablespoon water  
1 pint basket strawberries, sliced  
1 slice white bread  
1-3/4 cup margarine, melted  
Mix sour cream and two tablespoons sugar. Refrigerate until serving time. Mix the remaining 1/2 cup sugar and water, then pour it over strawberries. Toss lightly to coat berries and chill until ready to serve.  
Trim crusts from bread, cutting each slice in half lengthwise. Place on broiler rack and broil until lightly browned. Brush toast side with half of the margarine. Turn, brown second side of bread and brush with remaining margarine. Cool.  
When ready to serve, layer toast and strawberries, using two pieces of toast for each serving, beginning with toast and ending with strawberries. Top with sour-cream mixture. Makes six servings.

### Winn-Dixie Sales Hike

Winn-Dixie food stores increased their sales by \$153,439,750 during the 48 weeks ended May 31 compared with the like period last year. The volume totaled \$1,148,487,342 against \$995,047,592, a gain of 15.42 per cent. An advance also was recorded for the four weeks ended May 31 when sales were \$96,286,378 compared with \$85,105,088, a rise of 13.14 per cent.  
The company operates 785 supermarkets throughout the Southeast compared with 743 a year ago.  
**NYC 'Beefs' About 'Burgers'**  
NEW YORK (AP)—The city has a beef with some restaurateurs.  
A survey of 421 eating spots found 156 of them selling hamburgers with starchy fillings, soy proteins and other nonbeef components, the city Consumer Affairs department said, and the city is cracking down.  
Official warning was served Monday by Consumer Affairs Commissioner Bess Myerson Grant that restaurants must serve 100 per cent pure beef hamburgers. Debating the burger could bring up to a \$250 fine and 10 days in jail.



SANFORD'S LOWEST PRICES! 2440 PARK AVENUE

Don't "play games" with your food budget! EVERYBODY WINS WITH OUR EVERY DAY LOW PRICES!

Don't "play games" with your food budget! EVERYBODY WINS WITH OUR EVERY DAY LOW PRICES!

FOOD FAIR QUALITY DISCOUNT

SKINLESS FRANKS 39¢

HONEY-NUT SAUSAGE 59¢

SEMI-BONELESS HAMS 89¢

SLICED BACON 59¢

GROUND BEEF 4 \$1.99

LIBBY'S DRINKS 10¢

PAPER PLATES 99¢

LIBBY'S CATSUP 5/1

BANANAS 10¢

SIRLOIN STEAKS \$1.19

CHUCK STEAKS 68¢

CHUCK ROAST 58¢

GIANT 1 1/2 LB. WHITE BREAD 4/99¢

ORBIT BEER 79¢

CANNED DRINKS 15/1

COMPARE! FOOD FAIR PLANT BUTTER

POTATOES 5¢

SLICED 1/4 PORK LOIN CHOPS 68¢

CHUCK ROAST 58¢

COMPARE! FINE SPREAD SOFT OLEO

COMPARE! COGNATE INSTANT SHAVE

COMPARE! CHOCOLATE HUNDO PIES

COMPARE! DEL MONTE KOSHER DILLS

COMPARE! HORMEL'S SPAM 3/1

LEMONS 12/45¢

COMPARE! Crown Liverwurst

COMPARE! BONELESS BEEF STEW

COMPARE! POT ROAST 88¢

COMPARE! ICE MILK 49¢

COMPARE! KRAFT MUSTARD 9¢

COMPARE! KOSHER DILLS 69¢

COMPARE! HORMEL'S SPAM 3/1

COMPARE! CLAPP'S BABY FOOD 9¢

COMPARE! BONELESS BEEF STEW 78¢

COMPARE! POT ROAST 88¢

COMPARE! ICE MILK 49¢

COMPARE! KRAFT MUSTARD 9¢

COMPARE! KOSHER DILLS 69¢

COMPARE! HORMEL'S SPAM 3/1

COMPARE! HORMEL'S SPAM 3/1

COMPARE! MEAT PIES 6/1

COMPARE! BONELESS BEEF STEW 78¢

COMPARE! POT ROAST 88¢

COMPARE! ICE MILK 49¢

COMPARE! KRAFT MUSTARD 9¢

COMPARE! KOSHER DILLS 69¢

COMPARE! HORMEL'S SPAM 3/1

COMPARE! HORMEL'S SPAM 3/1

The Sanford Herald Thursday, June 26, 1969 — Sanford, Florida 32771

Suspects Innocent In Machete Case

Directed verdict of acquittal was returned by a six-man jury late yesterday afternoon in the trial of two men accused of the machete-throwing last June of a youth near Altamonte Springs.

THURSDAY Headlines Inside THE HERALD

World News, Around the Nation, Sports World, Statewide, Local Happenings, Index

Governor Kirk Declares: Voc Schools, Roads Needed

Florida needs a vocational training school for its children and needs for its tourists. This was the core of the message brought to Sanford last night by Gov. Claude Kirk, who then departed leaving the feeling that "he's a jolly good fellow."



'GOVERNOR APPRECIATION DAY' GUEST GOV. CLAUDE KIRK made a flying trip into Sanford Wednesday evening to "chut" with 125 civic leaders.

Health Classes Continue

The controversial color transparencies will be removed from the pilot program of health education but other than that there will be no major revisions in the program.

Completion Date: May 3, 1970

Port Work 'Ready To Go'

Sanford finished by May 2, 1970, or face an assessment of \$200 in liquidated damages for each consecutive calendar day past that date.

Local Marine Writes

Reds Use Suicide Squads

Dear Mr. Editor, You sure are being real good about writing—it sure helps on my end to hear from home often.

Bob Cleverly hid his securities where thieves couldn't find them.

US UNITED STATE BANK of Jacksonville