

122 Persons Die in Airplane Crash; \$700,000 in Diamonds Missing

WINDHOLM, South West Africa (AP) — A \$700,000 shipment of diamonds was missing today in the wreckage of a South African airplane that crashed Thursday night, killing 122 persons.

The plane, a Douglas DC-7, was en route to London from Johannesburg, when it crashed in a wooded area about 100 miles from Johannesburg. The wreckage was discovered by a search party from South Africa, and the bodies of 122 persons were recovered.

The plane was carrying 122 persons, including 100 passengers and 22 crew members. The plane was carrying a large quantity of diamonds, valued at \$700,000.

The crash occurred on the night of Jan. 12, 1958. The plane was flying from Johannesburg to London. The wreckage was discovered in a wooded area about 100 miles from Johannesburg.

INSURANCE SERVICE

RUMLEY-MONTEITH, INC.

300 W. First St. Sanford 322-0376

County Judge Karlyle Householder Succumbs Today

Seminole County **** on the St. Johns River **** "The Nile of America"

The Sanford Herald

Phone 322-3611 or 425-5938 Zip Code 32771
 WEATHER: Monday 95-64; generally clear, hot thru Wednesday.
 VOL. 60, NO. 177 — AP Leased Wire — Established 1908 — TUESDAY, APRIL 23, 1968 — SANFORD, FLORIDA — Price 10 Cents

Under One-Man, One-Vote Ruling No Change Seen Here

By DONNA ESTES

Redistricting, long considered a chore by legislative bodies, does not appear in the office of the Secretary of State's office for the Seminole Board of Public Instruction or County Commission despite the recent ruling of the U.S. Supreme Court extending the "one-man, one-vote" principle to local governing units.

School Supt. William Phillips told The Sanford Herald the School Board has not taken any action to change its districts at this time.

Commission Chairman John Alexander pointed out the County Commission redistricted itself in 1965. "There will certainly always be a small fluctuation in population in each district, but there is nothing to indicate that would appreciably change the districts at this time. They are approximately equal in population." He further reminded that all members of his Board are elected county-wide and that all the people of the county are represented equally.

School Board members also are elected county-wide. A survey of the situation conducted by The Herald indicates the School Board last redrew its district lines in October, 1959. Both current voter registration statistics and population charts drawn by the county planning and zoning department in 1965 show a wide difference in number of persons in each district.

Keeping in mind population in Seminole is estimated to have increased in the county by some 12,000 persons in the past three years, 1965 estimates show district one, represented by Mrs. Jean Bryan had 11,955 persons; district two represented by Mason Whitton had 6,332; district three, James Birkmeyer, 23,649; district four, John Evans, 12,571 and district five, A. F. Keith, 16,020.

Voter registration by district shows district one, 3,864 electors; district two, 2,271; district three, 4,379; district four, 4,378; and district five, 4,363.

At the same time using the population estimates the County Commission used in 1965 to re-district itself indicates a closer voter registration by district. Voter registration, however, indicates the districts should perhaps be re-examined. Districts one represented by Edward Yarborough had 12,383 persons in 1965; district two, Alexander, 14,200; district three, W. Lawrence Swafford, 13,961; district four, Robert Parker, 16,813 and district five, John Fitzpatrick, 14,461.

Voter registration by district shows district one, 3,864; district two, 2,271; district three, 4,379; district four, 4,378; and district five, 4,363.

Precincts in County Commission districts are one - 3, 6, 8, 11, 12, 21 and 21; two - 4, 9, 10, 11, 12, 13, 14, 16, 23, 25, 26 and 33; four - 5, 7, 8, 17, 24 and 31; and five - 2, 19, 20, 21, 29, 30 and 32.

Funeral Services Thursday

Seminole County Judge Karlyle Householder, 50 years old, died at 1 p.m. today in Seminole Memorial Hospital following a recent attack of heart disease.

Born Jan. 12, 1918, in Sanford, he had lived here all his life. He was a graduate of the University of Florida and had practiced law in Seminole County since 1947, having served for 11 years as county prosecuting attorney and for the past three-and-a-half years as county judge. For many years he served as county service officer with the Veterans Administration.

He was a member of First Methodist Church of Sanford; of the Florida Bar Association; a past president of the Seminole County Bar Association; a past president of the Seminole County Chamber of Commerce, and a member of American Legion, Sportsman's Association, Disabled American Veterans, and Elks Club.

Survivors are his wife, Mrs. Ila Hathcox Householder, a daughter, Melissa Householder, three sons, Wayne and Mark Householder and Robert Morris, and his step-mother, Mrs. Lois Householder, all of Sanford. Judge Householder's father, the late Ernest Householder, also served as Seminole County judge for seven years.

Funeral services will be at 11 a.m. Thursday at First Methodist Church with Rev. Robert M. Jenkins officiating. Burial will be in Oklawaha Memorial Park. Brison Funeral Home is in charge of arrangements.

Ch. Justice Willard Caldwell, of the Florida Supreme Court, last week named as interim county judge here the Lake County county judge, W. A. Milton Jr. and John W. Booth, to serve during Judge Householder's illness. They will continue as interim judges until a successor is named by Judge Kirk.

As a tribute of respect, today's meeting of the county commission was postponed. All offices in the courthouse will be closed Thursday during the funeral.



JUDGE KARLYLE HOUSHOLDER

Judge's Death Shock To All

Shock was expressed today by courthouse officials, attorneys and others at the sudden death of County Judge Karlyle Householder this morning.

Wallace Hall: "I am deeply shocked to learn of Judge Householder's death. His passing will certainly be a loss to the entire community."

Supervisor of Elections Camilla Bruce: "I have known Karlyle all my life. Lord, he was so young, only 50. I'm shocked. I can't realize he's gone."

County Commission Chairman John Alexander: "The untimely passing of this fine public servant is a terrible shock. He will be sorely missed."

County Attorney Harold Johnson: "He was a wonderful person. This is a deep shock to all the lawyers of the community who admired and respected him as an attorney. It is going to be a great loss to our community."

Mack N. Cleveland Jr.: "This is a tragic loss to the community and a loss to me personally of a friend."

Tax Collector Troy Ray: "Terrible loss to us."

County Clerk Arthur Beckwith Jr.: "Seminole County will certainly feel the loss of this dedicated public servant. His family has long been honored and respected by our people. Judge Householder's dedicated service, his friendly smile and the efficient operation of his office were a hallmark of this public official."

County Prosecutor Kenneth McIntosh: "This is a tremendous loss to the whole community. I am in a state of shock."

Harian Tuck: "In my experience Judge Householder was always considerate of \$10,000 to \$1,000 by Lovett.

Publix Markets

PRICES ARE EFFECTIVE MON. - TUE. - WED. APRIL 22-23-24th.

down produce lane

Locally-Grown Tender Yellow Squash **15¢**

Juicy Sun-Kist Lemons **39¢**

Swift's Luscious Maple Brand Tasty Sliced Bacon **79¢**

Swift's Premium Pies Beef Franks **59¢**

Swift's Premium Assorted Water-Thin Sliced Meats **35¢**

Herman's Orange Brand Chunk Style Braunschweiger **49¢**

Tyson's Famous Whole Hog Link Sausage **59¢**

Mrs. Bell's Peanut Butter **59¢**

Mrs. Bell's Strawberry Preserves **29¢**

Swift's Whole Chicken **89¢**

frozen foods

Milmo's Maple Syrup, Cond. Cream Lemonade **69¢**

Drumstick Home Waffles **39¢**

Southland Restaurant Co. Rhubarb **39¢**

Swift's Premium Proton Gov't.-Inspected Heavy Weights Beef Suet!

INSURANCE SERVICE

RUMLEY-MONTEITH, INC.

300 W. First St. Sanford 322-0376

PILLSBURY SWEET or BUTTERMILK

Biscuits

per 5¢

Limit 4 please

HENZ RICH CREAMY TOMATO

Soup

#1 can 10¢

Limit 6 cans please

10¢-off deal! NEW LAUNDRY DETERGENT

Ajax

49¢

Limit 1 please with other purchases of \$2.00 or more (including detergent)

THE ALL-PURPOSE SHORTENING SWIFT'S

Swift'ning

3 lb. can 49¢

Limit 1 please with other purchases of \$2.00 or more (including detergent)

City Seeks To Purchase Goldsboro Recreational Building Ground

By BILL SCOTT

Sanford City Commission last night asked Warren Knowles, city manager, to contact a property owner in the vicinity of Crooms High School about acquiring a site for construction of Goldsboro Recreation Center.

John Daniel was mentioned by the commissioners, meeting in regular session at City Hall, as owner of land in the area of proposed building.

Daniel, who operates a service station on 13th Street, "The Goldsboro Herald" offices are two parcels of land which could be used for the building; one and one-fourth acres on Southwest Road and approximately three acres in front of Crooms High School.

Commission voted to file a vacancy on Board of Adjustments by appointing Ned Julian to a four-year term, replacing Jerry Senkark, whose term expired April 14. Julian had indicated earlier that he would serve.

Another vacancy on Sanford Housing Authority was left unfilled by the group, as commissioners voted to table filling the position, which will open May 20, when four-year term of W. E. Kirchhoff Jr., expires.

Commission took no action on a request from John Sauls, trustee for Southern Methodist Church, who had sought to have an area at West Eighth Street and Perimeter Avenue rezoned from R-5 to M-1. Rezoning had been approved by Zoning and Planning Commission, but according to property owners in the area the land is to be sold to a company for use as a distribution center.

On a motion by Commissioner A. L. Wilson, the group voted to table the request until May 12.

On the subject of property, commission voted to approve first reading of following ordinances:

Rezone from R-2 and R-5 to R-6 area from Fifth to Sixth (Continued on Page 2 Col. 5)

Teachers Elect Henley

Seminole Education Association members Monday elected Carlton Henley, Lyman High School principal, president for the 1968-69 school year.

Other SEA officers elected were JoAnn Rowe, vice president; Ophelia Moore, secretary, and Louis Ross Jr., treasurer.

Classroom Teachers Department of SEA elected Joyce Roberts, chairman; Dede Robert, vice chairman; Jackie Grace, secretary, and Marion Bennett, treasurer.

Coffee Club Session Set

Members of the Seminole County Chamber of Commerce coffee club will be guests of the Sanford Plaza Merchants Association at 10 o'clock Thursday at the Rainbow's End ice cream parlor in the shopping center.

There will be a social hour at 7 p.m. in the theater lobby, and the premiere showing at 8:15 p.m. of "Planet of the Apes," starring Charlton Heston.

River Pollution Condemned

By BILL SCOTT

Approximately 150 million gallons of contaminated pollutants are being dumped daily into the St. Johns River in Jacksonville. This situation is being brought to the attention in their own parties will not appear on the May 7 ballot. But all will appear on the November ballot.

It's a kind of politics: Florida Republican Gov. Claude Kirk is out on the West Coast talking to California Republicans and still raising a storm about Alabama's former Gov. George Wallace. Kirk's parents work for Gov. Lurlen Wallace and need the group's attention.

Dicks said a water control board bill advanced by the group and introduced by a Florida County legislator passed in last state Legislature is now state law; a companion act, which would eliminate industrial waste being pumped into the river.

Felix Salvador, chairman of the group which was organized in 1963 and allowed to die by Gov. Claude Kirk in 1967 before being brought to life again this year by Kirk, was again re-elected chairman by the 12 member group.

Members of the committee include Matt Roland Jr., of Mayport; Ken Friedman, of Jacksonville; Dennis Floyd, of Palatka; Robert Williams, of Palatka; Leroy Rand, of Welaka; Zack Holland, of Hazlet; B. C. Crowe, of Sanford; C. E. Merrill, of Maitland; Don McAllister, of Orlando; Morgan Dinkub, of Indianton; and Richard Gritley, of Clermont.

Purpose of the group is to examine all facts relative to development of the St. Johns River and seek action to alleviate "things, such as pollution, which tends to destroy reproduction process of fish in estuaries."

Most of the blame for the decrease in fish was placed by Salvador on dredging, pollution, and pesticides and herbicides used by some to kill water hyacinths.

A solution of a chemical known as 2, 4-D and used to kill water hyacinths was blamed for leaving a residue which affected the fish.

DDT was called by Salvador "worst enemy of fish." It was brought out that a machine was being used that possibly would destroy hyacinths by a process which would eliminate use of chemicals.

Group in a final action voted to make up an agenda for next scheduled meeting for May 20 at Palatka.

Former Resident Succumbs

LeRoy P. Chittenden, a World War I Marine and a former associate editor of the National Tribune Stars and Stripes in 1940, died Monday after a heart attack. He had the military paper in 1940 to found his own press service, but returned to the paper in 1960.

Chittenden, 76 years old, was born in Corning, N. Y., and was a resident of McLean, Va., at the time of his death. A former resident of Sanford, he moved to Virginia in 1933. He also was editor of "The Torch," a monthly publication for veterans of World War I, U.S.A. He had received a law degree from Southeastern University in Washington, D. C. He was a Presbyterian; was a charter member, first adjutant and past commander of Campbell Lodge, Post 51 of American Legion Post 81 of Sanford, and was a past district commander; was a member of National Capital Barracks 161, Veterans of World War I in Washington; was a member of the National Press Club in Washington.

Freeman said his committee adopted a resolution endorsing the bond issue and urging citizens and voters of Seminole County to vote yes for the \$10.3 million bonds.

"Our committee has investigated the finance proposal, we have investigated the condition of Seminole County schools and talked at length with the school administrators and we feel it is absolutely necessary that this bond issue pass," Freeman declared. "We feel that proper education cannot be given to the children of Seminole County when schools are on double sessions and unless this bond issue passes our schools will be on double sessions. We urge citizens to vote yes on this issue in the coming May 7 election."

Members of Freeman's committee include Robert Karns, Troy Ray, S. Joseph Davis Jr., Miss Cecile Heard, Ralph Peasold and Roger Berry.

Chamber Urges OK On Bonds

Seminole County Chamber of Commerce, through its legislative and national affairs committee, has joined with and respected by our other organizations who have endorsed the school bond issue, Thomas Freeman, committee chairman, reported to the board of directors.

Freeman said his committee adopted a resolution endorsing the bond issue and urging citizens and voters of Seminole County to vote yes for the \$10.3 million bonds.

"Our committee has investigated the finance proposal, we have investigated the condition of Seminole County schools and talked at length with the school administrators and we feel it is absolutely necessary that this bond issue pass," Freeman declared. "We feel that proper education cannot be given to the children of Seminole County when schools are on double sessions and unless this bond issue passes our schools will be on double sessions. We urge citizens to vote yes on this issue in the coming May 7 election."

Members of Freeman's committee include Robert Karns, Troy Ray, S. Joseph Davis Jr., Miss Cecile Heard, Ralph Peasold and Roger Berry.

Probe Death Of Sailor

Investigation is underway today at Sanford Naval Air Station into the apparent suicidal death by hanging Monday of a 20-year-old fire control technician airman.

Victor George Holenstis, who was on duty, was dead when discovered, according to Cdr. Patrick E. O'Gara.

Enjoy the Happy Difference - Where Shopping is a Pleasure

SANFORD PLAZA

Hwy. 17-92 and Osceola Dr., Sanford

MON., TUE., WED., SAT. 9 A.M. - 9 P.M.
THURS., FRI., 10:30 - 9:00

CLOSED SUNDAY

SEMINOLE PLAZA

Casselberry

MON., THUR. SAT. 9:30 - 7:00

CLOSED SUNDAY

Sirloin, T-Bone, Key Club or Boneless Top Round

Steak **lb. \$1.09**

EXTRA 100 Green Stamps

Lysol Spray Disinfectant 14 oz. can

EXTRA 50 Green Stamps

Mazwell House Instant Coffee 10 oz. jar

EXTRA 50 Green Stamps

Wizard Bathroom, Spring Bouquet Fragrance Air Freshener 9 oz. can

EXTRA 50 Green Stamps

Heinz Cider or White Vinegar quart bottle

EXTRA 50 Green Stamps

Chef Boy-Ar-Dee Chili With Beans 15 1/2 oz. can

EXTRA 50 Green Stamps

Hofty Plastic Bags 30 quart size or 15 gallon size

A little goes a long way at

ELLINOR VOLKSWAGEN

1219 ORLANDO DRIVE SANFORD 322-1813

Florida Has 8 'Hungry Counties,' Probe Shows

WASHINGTON (AP) — Eight Florida counties are being probed for malnutrition in a study by the U.S. Department of Agriculture, a report says.

The study, which is part of a national effort to identify areas of chronic malnutrition, found that eight Florida counties — Alachua, Citrus, Duval, Hamilton, Marion, Nassau and Putnam — are among the most malnourished in the nation.

The report, issued last Monday, found that 20 percent of the children in these counties are malnourished, compared with 10 percent in the rest of the nation.

The study was conducted by the U.S. Department of Agriculture's Agricultural Research Service, which is part of the U.S. Department of Agriculture.

The report, issued last Monday, found that 20 percent of the children in these counties are malnourished, compared with 10 percent in the rest of the nation.

The study was conducted by the U.S. Department of Agriculture's Agricultural Research Service, which is part of the U.S. Department of Agriculture.

The report, issued last Monday, found that 20 percent of the children in these counties are malnourished, compared with 10 percent in the rest of the nation.

The study was conducted by the U.S. Department of Agriculture's Agricultural Research Service, which is part of the U.S. Department of Agriculture.

The report, issued last Monday, found that 20 percent of the children in these counties are malnourished, compared with 10 percent in the rest of the nation.

The study was conducted by the U.S. Department of Agriculture's Agricultural Research Service, which is part of the U.S. Department of Agriculture.

The report, issued last Monday, found that 20 percent of the children in these counties are malnourished, compared with 10 percent in the rest of the nation.

The study was conducted by the U.S. Department of Agriculture's Agricultural Research Service, which is part of the U.S. Department of Agriculture.

The report, issued last Monday, found that 20 percent of the children in these counties are malnourished, compared with 10 percent in the rest of the nation.

The study was conducted by the U.S. Department of Agriculture's Agricultural Research Service, which is part of the U.S. Department of Agriculture.

The report, issued last Monday, found that 20 percent of the children in these counties are malnourished, compared with 10 percent in the rest of the nation.

The study was conducted by the U.S. Department of Agriculture's Agricultural Research Service, which is part of the U.S. Department of Agriculture.

The report, issued last Monday, found that 20 percent of the children in these counties are malnourished, compared with 10 percent in the rest of the nation.

The study was conducted by the U.S. Department of Agriculture's Agricultural Research Service, which is part of the U.S. Department of Agriculture.

The report, issued last Monday, found that 20 percent of the children in these counties are malnourished, compared with 10 percent in the rest of the nation.

The study was conducted by the U.S. Department of Agriculture's Agricultural Research Service, which is part of the U.S. Department of Agriculture.

The report, issued last Monday, found that 20 percent of the children in these counties are malnourished, compared with 10 percent in the rest of the nation.

The study was conducted by the U.S. Department of Agriculture's Agricultural Research Service, which is part of the U.S. Department of Agriculture.

The report, issued last Monday, found that 20 percent of the children in these counties are malnourished, compared with 10 percent in the rest of the nation.

The study was conducted by the U.S. Department of Agriculture's Agricultural Research Service, which is part of the U.S. Department of Agriculture.

The report, issued last Monday, found that 20 percent of the children in these counties are malnourished, compared with 10 percent in the rest of the nation.

The study was conducted by the U.S. Department of Agriculture's Agricultural Research Service, which is part of the U.S. Department of Agriculture.

The report, issued last Monday, found that 20 percent of the children in these counties are malnourished, compared with 10 percent in the rest of the nation.

The study was conducted by the U.S. Department of Agriculture's Agricultural Research Service, which is part of the U.S. Department of Agriculture.

The report, issued last Monday, found that 20 percent of the children in these counties are malnourished, compared with 10 percent in the rest of the nation.

The study was conducted by the U.S. Department of Agriculture's Agricultural Research Service, which is part of the U.S. Department of Agriculture.

The report, issued last Monday, found that 20 percent of the children in these counties are malnourished, compared with 10 percent in the rest of the nation.

The study was conducted by the U.S. Department of Agriculture's Agricultural Research Service, which is part of the U.S. Department of Agriculture.

The report, issued last Monday, found that 20 percent of the children in these counties are malnourished, compared with 10 percent in the rest of the nation.

The study was conducted by the U.S. Department of Agriculture's Agricultural Research Service, which is part of the U.S. Department of Agriculture.

Another F111 Crashes

WASHINGTON (AP) — Another U.S. Air Force F111 fighter-bomber crashed Monday night while on its way to or from a bombing mission in North Vietnam, but the U.S. Command said it was believed down somewhere in Thailand.

The aircraft, which had no crew aboard, was believed to have crashed in a remote area of Thailand.

The crash was the second of two F111s to crash in Thailand in the past few days.

The crash was the second of two F111s to crash in Thailand in the past few days.

The aircraft, which had no crew aboard, was believed to have crashed in a remote area of Thailand.

The crash was the second of two F111s to crash in Thailand in the past few days.

The aircraft, which had no crew aboard, was believed to have crashed in a remote area of Thailand.

The crash was the second of two F111s to crash in Thailand in the past few days.

The aircraft, which had no crew aboard, was believed to have crashed in a remote area of Thailand.

The crash was the second of two F111s to crash in Thailand in the past few days.

The aircraft, which had no crew aboard, was believed to have crashed in a remote area of Thailand.

The crash was the second of two F111s to crash in Thailand in the past few days.

The aircraft, which had no crew aboard, was believed to have crashed in a remote area of Thailand.

The crash was the second of two F111s to crash in Thailand in the past few days.

The aircraft, which had no crew aboard, was believed to have crashed in a remote area of Thailand.

The crash was the second of two F111s to crash in Thailand in the past few days.

The aircraft, which had no crew aboard, was believed to have crashed in a remote area of Thailand.

The crash was the second of two F111s to crash in Thailand in the past few days.

The aircraft, which had no crew aboard, was believed to have crashed in a remote area of Thailand.

The crash was the second of two F111s to crash in Thailand in the past few days.

The aircraft, which had no crew aboard, was believed to have crashed in a remote area of Thailand.

The crash was the second of two F111s to crash in Thailand in the past few days.

The aircraft, which had no crew aboard, was believed to have crashed in a remote area of Thailand.

The crash was the second of two F111s to crash in Thailand in the past few days.

The aircraft, which had no crew aboard, was believed to have crashed in a remote area of Thailand.

The crash was the second of two F111s to crash in Thailand in the past few days.

The aircraft, which had no crew aboard, was believed to have crashed in a remote area of Thailand.

The crash was the second of two F111s to crash in Thailand in the past few days.

The aircraft, which had no crew aboard, was believed to have crashed in a remote area of Thailand.

The crash was the second of two F111s to crash in Thailand in the past few days.

The aircraft, which had no crew aboard, was believed to have crashed in a remote area of Thailand.

The crash was the second of two F111s to crash in Thailand in the past few days.

The aircraft, which had no crew aboard, was believed to have crashed in a remote area of Thailand.

HHH Outlines Foreign Policy

NEW YORK (AP) — Vice President Hubert H. Humphrey says the United States should concentrate on "affirmative action" to meet the needs of the world and "peaceful bridges" to Communist China.

In a speech before the American Society for Public Affairs, Humphrey outlined his foreign policy views.

He said the United States should focus on "affirmative action" to help the world's poor and "peaceful bridges" to Communist China.

In a speech before the American Society for Public Affairs, Humphrey outlined his foreign policy views.

He said the United States should focus on "affirmative action" to help the world's poor and "peaceful bridges" to Communist China.

In a speech before the American Society for Public Affairs, Humphrey outlined his foreign policy views.

He said the United States should focus on "affirmative action" to help the world's poor and "peaceful bridges" to Communist China.

In a speech before the American Society for Public Affairs, Humphrey outlined his foreign policy views.

He said the United States should focus on "affirmative action" to help the world's poor and "peaceful bridges" to Communist China.

In a speech before the American Society for Public Affairs, Humphrey outlined his foreign policy views.

He said the United States should focus on "affirmative action" to help the world's poor and "peaceful bridges" to Communist China.

In a speech before the American Society for Public Affairs, Humphrey outlined his foreign policy views.

He said the United States should focus on "affirmative action" to help the world's poor and "peaceful bridges" to Communist China.

In a speech before the American Society for Public Affairs, Humphrey outlined his foreign policy views.

He said the United States should focus on "affirmative action" to help the world's poor and "peaceful bridges" to Communist China.

In a speech before the American Society for Public Affairs, Humphrey outlined his foreign policy views.

He said the United States should focus on "affirmative action" to help the world's poor and "peaceful bridges" to Communist China.

In a speech before the American Society for Public Affairs, Humphrey outlined his foreign policy views.

He said the United States should focus on "affirmative action" to help the world's poor and "peaceful bridges" to Communist China.

In a speech before the American Society for Public Affairs, Humphrey outlined his foreign policy views.

He said the United States should focus on "affirmative action" to help the world's poor and "peaceful bridges" to Communist China.

In a speech before the American Society for Public Affairs, Humphrey outlined his foreign policy views.

He said the United States should focus on "affirmative action" to help the world's poor and "peaceful bridges" to Communist China.

In a speech before the American Society for Public Affairs, Humphrey outlined his foreign policy views.

He said the United States should focus on "affirmative action" to help the world's poor and "peaceful bridges" to Communist China.

In a speech before the American Society for Public Affairs, Humphrey outlined his foreign policy views.

He said the United States should focus on "affirmative action" to help the world's poor and "peaceful bridges" to Communist China.

In a speech before the American Society for Public Affairs, Humphrey outlined his foreign policy views.

He said the United States should focus on "affirmative action" to help the world's poor and "peaceful bridges" to Communist China.

In a speech before the American Society for Public Affairs, Humphrey outlined his foreign policy views.

He said the United States should focus on "affirmative action" to help the world's poor and "peaceful bridges" to Communist China.

In a speech before the American Society for Public Affairs, Humphrey outlined his foreign policy views.

He said the United States should focus on "affirmative action" to help the world's poor and "peaceful bridges" to Communist China.

Child Adoption Program Told Rotarians

Social agencies are feeling the effects of changing or "liberalized" attitudes, not the least of which is the increase in child adoptions, a program director told Rotarians Monday.

The program director, Ed Mahlin, said that the number of child adoptions has increased significantly in recent years.

He said that the program is designed to help children find homes and that the process is often a long one.

The program director, Ed Mahlin, said that the number of child adoptions has increased significantly in recent years.

He said that the program is designed to help children find homes and that the process is often a long one.

The program director, Ed Mahlin, said that the number of child adoptions has increased significantly in recent years.

He said that the program is designed to help children find homes and that the process is often a long one.

The program director, Ed Mahlin, said that the number of child adoptions has increased significantly in recent years.

He said that the program is designed to help children find homes and that the process is often a long one.

The program director, Ed Mahlin, said that the number of child adoptions has increased significantly in recent years.

He said that the program is designed to help children find homes and that the process is often a long one.

The program director, Ed Mahlin, said that the number of child adoptions has increased significantly in recent years.

He said that the program is designed to help children find homes and that the process is often a long one.

The program director, Ed Mahlin, said that the number of child adoptions has increased significantly in recent years.

He said that the program is designed to help children find homes and that the process is often a long one.

The program director, Ed Mahlin, said that the number of child adoptions has increased significantly in recent years.

He said that the program is designed to help children find homes and that the process is often a long one.

The program director, Ed Mahlin, said that the number of child adoptions has increased significantly in recent years.

He said that the program is designed to help children find homes and that the process is often a long one.

The program director, Ed Mahlin, said that the number of child adoptions has increased significantly in recent years.

He said that the program is designed to help children find homes and that the process is often a long one.

The program director, Ed Mahlin, said that the number of child adoptions has increased significantly in recent years.

He said that the program is designed to help children find homes and that the process is often a long one.

The program director, Ed Mahlin, said that the number of child adoptions has increased significantly in recent years.

He said that the program is designed to help children find homes and that the process is often a long one.

The program director, Ed Mahlin, said that the number of child adoptions has increased significantly in recent years.

He said that the program is designed to help children find homes and that the process is often a long one.

The program director, Ed Mahlin, said that the number of child adoptions has increased significantly in recent years.

He said that the program is designed to help children find homes and that the process is often a long one.

The program director, Ed Mahlin, said that the number of child adoptions has increased significantly in recent years.

He said that the program is designed to help children find homes and that the process is often a long one.

The program director, Ed Mahlin, said that the number of child adoptions has increased significantly in recent years.

He said that the program is designed to help children find homes and that the process is often a long one.

ED MAHLIN, division executive of the Central Florida Division, Children's Home Society of Florida, is welcomed to the Rotary Club by William Bush (right), program chairman, as CHS Division President George Touhy (left) looks on.

BRISSON FUNERAL HOME
DARLAWN MONUMENT CO.
SANFORD FLOWER SHOP

PERMANENT ARRANGEMENTS FOR EVERY OCCASION
SANFORD FLOWER SHOP

RENT A BRAND NEW VICTOR ELECTRIC ADDING MACHINE
george stuart

CHILD ADOPTION PROGRAM TOLD ROTARIANS

HOSPITAL NOTES

FORMER RESIDENT SUCCUMBS

CADILLAC Standard of the World

CHILD ADOPTION PROGRAM TOLD ROTARIANS

HOSPITAL NOTES

FORMER RESIDENT SUCCUMBS

CADILLAC Standard of the World

THE INQUIRING REPORTER

by Carol Jaques

Question: How are young people different than when you were growing up?



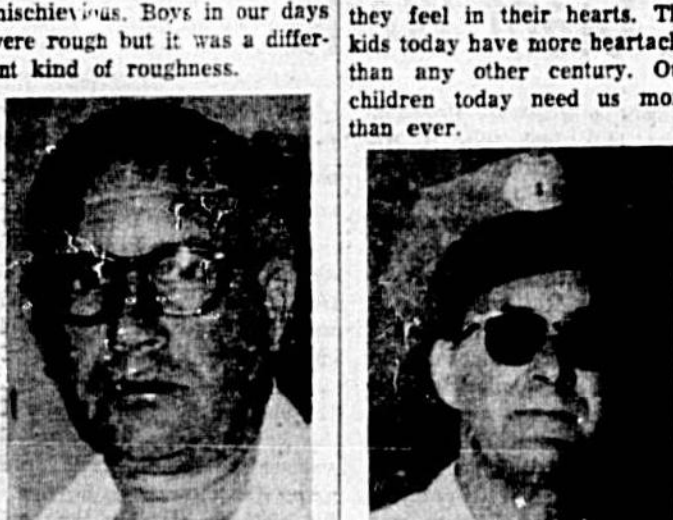
Helen Phillips, 1966 Palmetto Avenue, Sanford.

I'm 76 years old and as far as I am concerned the young people today are the finest I've seen. You do have a small percentage that are not so good, but for the most part, the kids are swell. I feel the younger generation today are smarter.



Paul Mears, 112 Burke Street, Altamonte Springs.

Paul Mears, of Orlando, is a candidate for the Democratic nomination for the State Senate next 16 in the May 7 party primary.



Pat Sweeney, 112 Burke Street, Altamonte Springs.

Pat Sweeney, 112 Burke Street, Altamonte Springs.



Helen Phillips, 1966 Palmetto Avenue, Sanford.

Helen Phillips, 1966 Palmetto Avenue, Sanford.

THE INQUIRING REPORTER

'Politics' Popular At S-S Jr. Hi

By JANE CARROLL

In the last week of South Seminole Junior High School in Casselberry there is an unmarked door behind which politics are being discussed in a crowded narrow smoke filled room and active responsible citizens are being appointed.



Students in a classroom discussing politics.

The smoke comes from the pipe of Guy Strickland, American history teacher, for this is his lair... a hole in the wall known as the social studies workshop.

Ever since the beginning of school last fall from 15 to 30 eager students have squeezed themselves in to discuss American history or politics and government with Strickland, who makes the subject come alive, everyday.

Although Strickland remains neutral politically he encourages his students to invest the platforms and backgrounds of the various candidates and support their choice.

Many spirited discussions result as students choose opposing candidates and parties.

In the large group classroom, two days will be devoted for the students to speak in support of their candidates on the state and national level and campaign for them.

County candidates are taboo because some of them have children enrolled in the school.

County candidates are taboo because some of them have children enrolled in the school.

County candidates are taboo because some of them have children enrolled in the school.

County candidates are taboo because some of them have children enrolled in the school.

County candidates are taboo because some of them have children enrolled in the school.

Cool System Helps Save City Water

By JANE CARROLL

Designers of the world's largest air conditioning system have come to the aid of Manhattan's hard pressed city water supply.



Diagram of a cooling system.

A standard cooling tower had been used in air conditioning the World Trade Center's twin 110-story office buildings, now under construction here, it would have gulped 100,000 gallons an hour of clean drinking water; about 2,000,000 half-pint, restaurant-sized glasses full every 60 minutes.

Rather than do that, engineers at Borg Warner's York Division are putting the Hudson River to work. They designed a 4,000-ton water chilling plant that will use as much as 5.3 million gallons an hour of river water. It will provide the cooling effect of 18,000,000 pounds of ice melting every 24 hours.

Not only will using river water help conserve the city's water supply, it will make it possible for the World Trade Center to provide continuous air conditioning for tenants and visitors during the most severe water shortages.

Not only will using river water help conserve the city's water supply, it will make it possible for the World Trade Center to provide continuous air conditioning for tenants and visitors during the most severe water shortages.

Not only will using river water help conserve the city's water supply, it will make it possible for the World Trade Center to provide continuous air conditioning for tenants and visitors during the most severe water shortages.

Not only will using river water help conserve the city's water supply, it will make it possible for the World Trade Center to provide continuous air conditioning for tenants and visitors during the most severe water shortages.

Not only will using river water help conserve the city's water supply, it will make it possible for the World Trade Center to provide continuous air conditioning for tenants and visitors during the most severe water shortages.

Not only will using river water help conserve the city's water supply, it will make it possible for the World Trade Center to provide continuous air conditioning for tenants and visitors during the most severe water shortages.

Not only will using river water help conserve the city's water supply, it will make it possible for the World Trade Center to provide continuous air conditioning for tenants and visitors during the most severe water shortages.

Not only will using river water help conserve the city's water supply, it will make it possible for the World Trade Center to provide continuous air conditioning for tenants and visitors during the most severe water shortages.

Paul Mears Runs For Senator

Paul Mears, of Orlando, is a candidate for the Democratic nomination for the State Senate next 16 in the May 7 party primary.

Paul Mears, of Orlando, is a candidate for the Democratic nomination for the State Senate next 16 in the May 7 party primary.

Paul Mears, of Orlando, is a candidate for the Democratic nomination for the State Senate next 16 in the May 7 party primary.

Paul Mears, of Orlando, is a candidate for the Democratic nomination for the State Senate next 16 in the May 7 party primary.

Paul Mears, of Orlando, is a candidate for the Democratic nomination for the State Senate next 16 in the May 7 party primary.

Paul Mears, of Orlando, is a candidate for the Democratic nomination for the State Senate next 16 in the May 7 party primary.

Paul Mears, of Orlando, is a candidate for the Democratic nomination for the State Senate next 16 in the May 7 party primary.

Paul Mears, of Orlando, is a candidate for the Democratic nomination for the State Senate next 16 in the May 7 party primary.

Paul Mears, of Orlando, is a candidate for the Democratic nomination for the State Senate next 16 in the May 7 party primary.

Paul Mears, of Orlando, is a candidate for the Democratic nomination for the State Senate next 16 in the May 7 party primary.

Paul Mears, of Orlando, is a candidate for the Democratic nomination for the State Senate next 16 in the May 7 party primary.

Paul Mears, of Orlando, is a candidate for the Democratic nomination for the State Senate next 16 in the May 7 party primary.

'Gone Fishing'

BIG PINEY, Wyo. (AP) — The Democratic convention should be a "winning" one, says a local fisherman.

BIG PINEY, Wyo. (AP) — The Democratic convention should be a "winning" one, says a local fisherman.

BIG PINEY, Wyo. (AP) — The Democratic convention should be a "winning" one, says a local fisherman.

BIG PINEY, Wyo. (AP) — The Democratic convention should be a "winning" one, says a local fisherman.

BIG PINEY, Wyo. (AP) — The Democratic convention should be a "winning" one, says a local fisherman.

BIG PINEY, Wyo. (AP) — The Democratic convention should be a "winning" one, says a local fisherman.

BIG PINEY, Wyo. (AP) — The Democratic convention should be a "winning" one, says a local fisherman.

BIG PINEY, Wyo. (AP) — The Democratic convention should be a "winning" one, says a local fisherman.

BIG PINEY, Wyo. (AP) — The Democratic convention should be a "winning" one, says a local fisherman.

BIG PINEY, Wyo. (AP) — The Democratic convention should be a "winning" one, says a local fisherman.

BIG PINEY, Wyo. (AP) — The Democratic convention should be a "winning" one, says a local fisherman.

BIG PINEY, Wyo. (AP) — The Democratic convention should be a "winning" one, says a local fisherman.

Shrine Slips From Base

WASHINGTON (AP) — The nation's marble shrine to Thomas Jefferson is slowly sliding into the nearby Tidal Basin.

WASHINGTON (AP) — The nation's marble shrine to Thomas Jefferson is slowly sliding into the nearby Tidal Basin.

WASHINGTON (AP) — The nation's marble shrine to Thomas Jefferson is slowly sliding into the nearby Tidal Basin.

WASHINGTON (AP) — The nation's marble shrine to Thomas Jefferson is slowly sliding into the nearby Tidal Basin.

WASHINGTON (AP) — The nation's marble shrine to Thomas Jefferson is slowly sliding into the nearby Tidal Basin.

WASHINGTON (AP) — The nation's marble shrine to Thomas Jefferson is slowly sliding into the nearby Tidal Basin.

WASHINGTON (AP) — The nation's marble shrine to Thomas Jefferson is slowly sliding into the nearby Tidal Basin.

WASHINGTON (AP) — The nation's marble shrine to Thomas Jefferson is slowly sliding into the nearby Tidal Basin.

WASHINGTON (AP) — The nation's marble shrine to Thomas Jefferson is slowly sliding into the nearby Tidal Basin.

WASHINGTON (AP) — The nation's marble shrine to Thomas Jefferson is slowly sliding into the nearby Tidal Basin.

WASHINGTON (AP) — The nation's marble shrine to Thomas Jefferson is slowly sliding into the nearby Tidal Basin.

WASHINGTON (AP) — The nation's marble shrine to Thomas Jefferson is slowly sliding into the nearby Tidal Basin.

Teen Dance Scheduled At Optimist Center

"D'Lynn Crist and Provocative Mod" will play for the teenage dance scheduled for the Optimist Youth Center in Casselberry Plaza Saturday night from 8:11 p.m.

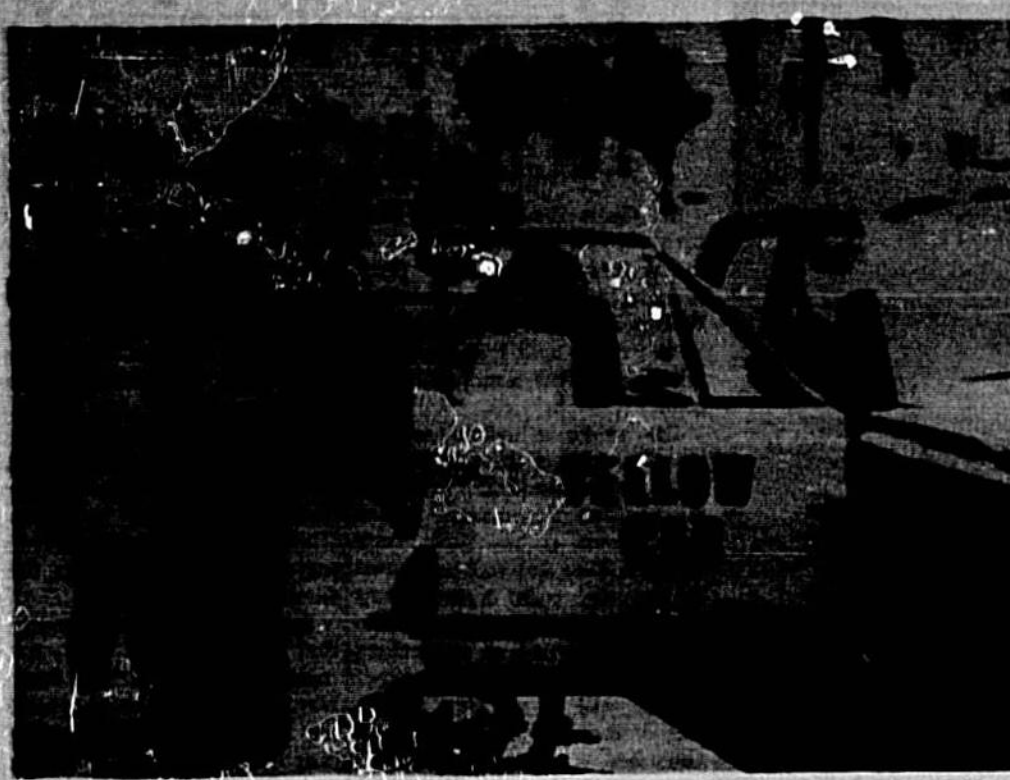
"D'Lynn Crist and Provocative Mod" will play for the teenage dance scheduled for the Optimist Youth Center in Casselberry Plaza Saturday night from 8:11 p.m.

"D'Lynn Crist and Provocative Mod" will play for the teenage dance scheduled for the Optimist Youth Center in Casselberry Plaza Saturday night from 8:11 p.m.

"D'Lynn Crist and Provocative Mod" will play for the teenage dance scheduled for the Optimist Youth Center in Casselberry Plaza Saturday night from 8:11 p.m.

Gateway Has For Constable

Small Gateway, long the gateway to the state of Florida, has just had the honor of being named the gateway to the state of Florida for the year 1967.



Forty-five pre-schoolers participated in the 18th annual visit of students of the Jacksonville Kindergarten of Winter Park to Sanford Friday. The children arrived in the city by bus, visited the zoo, picnicked in the park and traveled by taxi to the train station where they departed for home again. C. A. Collier, taxi owner, is shown boarding the last group of children for the trek to the train depot.

Easy Does It

LEWIS, Kessell, Howell (AP) — Drivers who like to "dig out" from a stop sign a penalty on the island of Kauai.



The rocket gun developed during World War II was given the name of launch by American soldiers who thought it looked like the musical instrument known by that name.

Florida Has Lost Year Of Rainfall

Editor's Note: Florida has had a number of drought, even worse than last year's record dry spell which parched the land and killed thousands of animals.

Without AP) — Gov. Claude Kirk says we're going through a record drought. Another one? We went through a record drought last year. The year before last and the year before that. Droughts have been breaking records regularly since came to Miami in 1955 — except in those years when we had floods.

Helped the most have been farmers in the rich Okechobee area and developers in Palm Beach, Broward and Dade counties. Tens of thousands of acres of sugarcane, covered glades were taken into agriculture.

LITTLE BRAVES of the Tawasa Tribe and their fathers, who are required to attend meetings with their sons, are shown in full Indian dress.

Repaid With Interest — LOUISVILLE, Ky. (AP) — will have the correct change in his pocket. Martin drove up to an automatic tollgate, dug into his pocket for coins and found nothing but a \$20 bill, a \$1 bill and two pennies.

AL DAVIS (DEM.) DISTRICT 3 COUNTY COMMISSIONER. For Leadership In Action. Elected. Presently Justice of the Peace.

SEMINOLE BUSINESS

FOR ADVERTISING INFORMATION ABOUT THIS PAGE CALL JAN McCLUNG, THE SANFORD HERALD, 322-2611.

Every Day Is Bargain Day At Wes-Kay Washeteria

Save 40 to 50 per cent of the cost of doing your laundry anywhere else. It's the promise of R. D. Wesley, proprietor of Wes-Kay Washeteria.

Wes-Kay Washeteria is patronized by discerning people in Sanford and throughout Seminole County who are looking for high quality equipment to give the best in service at economical prices.

Business Review Local Men Earn Honor Two Sanford men have been delegated by Life Insurance Company of Georgia to participate in flag-raising ceremonies at the new life of Georgia Tower.

Jack Benton Wins Honor Jack Benton of Strickland Morrison Ford, will be honored for an outstanding sales performance during 1967 at a banquet at the Sheraton Inn in St. Petersburg on Saturday.

Operating Revenues Up For Winter Park Phone Increased earnings, rising operating costs, and a revised interstate toll settlement were the highlights of the annual stockholder's meeting of The Winter Park Telephone Company.

NEED MONEY? Loren Carl and Gail Kunst are your newest financial neighbors assisting local residents with loans up to \$600.

Wes-Kay Washeteria DOUBLE LOADS 25c DRYERS 5c SMOKE SIGNALS? Seminoles PRINTERS "We Sell Quality & Service"

Episcopal Bazaar Set In Longwood By CAROL JAGUES Christ Episcopal Church Bazaar will open Friday at noon and remain open until 5 p.m.

SPRING GARDEN SALE HOE \$148 RAKE \$187 SHOVEL \$188

TRADE UP TO YAZOO THE ALL-AMERICAN POWER MOWER! See how to trade that old mower in for a new one.

Orientation Scheduled By JANE CASSELLBERRY An Orientation Program for parents of first graders who will be attending English Estates Elementary School next fall is planned for 7:30 Monday, April 29.

WATCH OUR ADS DURING THE COMING WEEKS FOR ADDITIONAL SPECIALS! GATOR LUMBER AND ACE HARDWARE

LEWIS SALES & SERVICE 2517 W. Country Club Rd., Sanford, Florida

Now, more for your money with Allstate Homeowners Insurance JOHN HAMILTON

WARNING! When You Have A Hair Style From JENNY'S

travel easy to Jacksonville 2 hrs. 20 min. via Interstate routes. fast express to Ft. Lauderdale Miami New York. Trailways easiest travel on earth.

Interiors by Berna Hall Custom Draperies • Accessories • Upholstering • Lamp Repair. Beautiful Drexel Furniture Now Available in Sanford.

Wanted BATTERED BODY Where old tired bodies are referred to new car glimmers. STOP BY FOR FREE ESTIMATE ON QUALITY PAINT & BODY WORK.

AT YOUR SERVICE! OPEN 24 HRS. DAILY. GOLF PRODUCTS • TENTS • BATHS • ACCESSORIES • SPORTS • WATCH, PHONE, AND WATCH REPAIRS.

REMODELING! REPAINTING! Do an expert job with the expert tools you can borrow reasonable. Home maintenance tool our specialty.

Vertical text on the far right edge of the page, likely a page number or publication info.

Simmons Twirls A Beauf...

Simmons Kayos Bates 10-1

By L. R. STALLWORTH... Simmons kayos Bates 10-1... The game was a doubleheader...

Fee Wee Is Organized

The Sanford Recreation Department will hold an organizational meeting for the 1968 season...

Legal Notice

SEMINOLE COUNTY PLANNING AND ZONING COMMISSION... Notice of Public Hearing...



Legal Notice

SEMINOLE COUNTY PLANNING AND ZONING COMMISSION... Notice of Public Hearing...

Legal Notice

SEMINOLE COUNTY PLANNING AND ZONING COMMISSION... Notice of Public Hearing...

Legal Notice

SEMINOLE COUNTY PLANNING AND ZONING COMMISSION... Notice of Public Hearing...

Legal Notice

SEMINOLE COUNTY PLANNING AND ZONING COMMISSION... Notice of Public Hearing...

Legal Notice

SEMINOLE COUNTY PLANNING AND ZONING COMMISSION... Notice of Public Hearing...

Legal Notice

SEMINOLE COUNTY PLANNING AND ZONING COMMISSION... Notice of Public Hearing...

JOB TO REMEMBER

Outstanding Coaching Job as the NBA Season Comes to a Close was that of Bill Sharman...

Laughing At Sports

NEW YORK (AP) — Don January had a par 5 on the final hole to win the Las Vegas Golf Tournament...

Away They Go...

U.S. Bank 14 - Locomotive Engineers 9... The winning pitcher was Steve Griffin...

Race Gets Tight In Sanford Juniors

Junior Baseball League... Creams Chevrolet 13 Civitas 7... The winning pitcher was Mike Kolf...

Hockey Results

Table with columns for team, goals, and assists. Includes entries for West Division and East Division.

Cubs Swap

CHICAGO (AP)—The Chicago Cubs obtained pitchers Jack Lamabe and Ron Piche from the St. Louis Cardinals...

Golfers! Save Hours & \$3 A Month!

Advertisement for a golf-related product or service, mentioning 'Save Hours & \$3 A Month!'.

NEW APOLLO

Advertisement for the Apollo water softener, highlighting features like 'Automatic Electric Control' and 'Fully guaranteed'.

As Low As 11¢ Per Month

Advertisement for Southern Natural Gas Company, offering 'Free Installation!' and listing the address at 222 S. Sanford Ave.

Battle Of Champs Set As Celtics Prepare For LA

BOSTON (AP) — The National Basketball Association's play-off record book is getting a wholesale rewrite job with the Los Angeles Lakers meeting the Boston Celtics in a championship showdown...

Lots Of Homers Hit Last Night

Church of God of Prophecy 11 First Presbyterian 10... The winning pitcher was Randy Scott...

Little League Opens

U.S. Bank 14 - Locomotive Engineers 9... The winning pitcher was Steve Griffin...

Race Gets Tight In Sanford Juniors

Junior Baseball League... Creams Chevrolet 13 Civitas 7... The winning pitcher was Mike Kolf...

Hockey Results

Table with columns for team, goals, and assists. Includes entries for West Division and East Division.

Cubs Swap

CHICAGO (AP)—The Chicago Cubs obtained pitchers Jack Lamabe and Ron Piche from the St. Louis Cardinals...

Golfers! Save Hours & \$3 A Month!

Advertisement for a golf-related product or service, mentioning 'Save Hours & \$3 A Month!'.

NEW APOLLO

Advertisement for the Apollo water softener, highlighting features like 'Automatic Electric Control' and 'Fully guaranteed'.

As Low As 11¢ Per Month

Advertisement for Southern Natural Gas Company, offering 'Free Installation!' and listing the address at 222 S. Sanford Ave.

KNEE DEEP in OUTDOORS

Despite the low water, we are having some real good bait 'n' grub action in Seminole County...

That's Right, Fellahs

Don and Jerry of Seminole Sporting Goods, proved that they do their Wednesday afternoons off to good advantage...

Major League Leaders

Table listing Major League Leaders for various categories like batting, pitching, and fielding.

Orlando Sports Stadium Attractions

- List of attractions for the Orlando Sports Stadium, including wrestling, boxing, and other events.

RE-ELECT W. LAWRENCE

Advertisement for W. Lawrence, a candidate for Seminole County Commissioner, District 3.

RE-ELECT W. LAWRENCE Swofford

Advertisement for W. Lawrence Swofford, a candidate for Seminole County Commissioner, District 3.

RE-ELECT W. LAWRENCE Swofford

Advertisement for W. Lawrence Swofford, a candidate for Seminole County Commissioner, District 3.

RE-ELECT W. LAWRENCE Swofford

Advertisement for W. Lawrence Swofford, a candidate for Seminole County Commissioner, District 3.

RE-ELECT W. LAWRENCE Swofford

Advertisement for W. Lawrence Swofford, a candidate for Seminole County Commissioner, District 3.

Zoilo The Hunter.... He Used A Bull To Bag A Moose

By THE ASSOCIATED PRESS... Zoilo Versalles, turned hunter again, used a bull to bag a moose...

Major League Standings

Table showing Major League Standings for various teams and leagues.

Major League Leaders

Table listing Major League Leaders for various categories like batting, pitching, and fielding.

Stefanich In Lead

CINCINNATI (AP) — Jim Stefanich of Joliet, Ill., and Don Thomas of Tucson, Ariz., two of the top young pro bowlers in the country...

Giants In Top Spot

The Giants moved into a tie for first place in Little League action here in Sanford yesterday as they scorched the Braves 10-1...

Hard Court

The Dodgers roared by the Red Sox on one hitter 6-2... The victory was a 21-1 triumph over San Francisco...

FIGHT RESULTS

Table showing Fight Results for various bouts.

FENCE

Advertisement for FENCE, providing contact information for SEMINOLE COUNTY MOTORS.

FENCE

Advertisement for FENCE, providing contact information for SEMINOLE COUNTY MOTORS.

He Used A Bull To Bag A Moose

By THE ASSOCIATED PRESS... Zoilo Versalles, turned hunter again, used a bull to bag a moose...

Major League Standings

Table showing Major League Standings for various teams and leagues.

Major League Leaders

Table listing Major League Leaders for various categories like batting, pitching, and fielding.

Stefanich In Lead

CINCINNATI (AP) — Jim Stefanich of Joliet, Ill., and Don Thomas of Tucson, Ariz., two of the top young pro bowlers in the country...

Giants In Top Spot

The Giants moved into a tie for first place in Little League action here in Sanford yesterday as they scorched the Braves 10-1...

Hard Court

The Dodgers roared by the Red Sox on one hitter 6-2... The victory was a 21-1 triumph over San Francisco...

FIGHT RESULTS

Table showing Fight Results for various bouts.

FENCE

Advertisement for FENCE, providing contact information for SEMINOLE COUNTY MOTORS.

FENCE

Advertisement for FENCE, providing contact information for SEMINOLE COUNTY MOTORS.

Undeclared Canes Meet Sanford Nine

South Seminoles Junior High School Hurricanes baseball team hopes to continue its winning ways when they come up against the Sanford Junior High Nine today...

Legal Notice

SEMINOLE COUNTY PLANNING AND ZONING COMMISSION... Notice of Public Hearing...

Legal Notice

SEMINOLE COUNTY PLANNING AND ZONING COMMISSION... Notice of Public Hearing...

Legal Notice

SEMINOLE COUNTY PLANNING AND ZONING COMMISSION... Notice of Public Hearing...

Legal Notice

SEMINOLE COUNTY PLANNING AND ZONING COMMISSION... Notice of Public Hearing...

Legal Notice

SEMINOLE COUNTY PLANNING AND ZONING COMMISSION... Notice of Public Hearing...

Legal Notice

SEMINOLE COUNTY PLANNING AND ZONING COMMISSION... Notice of Public Hearing...

Legal Notice

SEMINOLE COUNTY PLANNING AND ZONING COMMISSION... Notice of Public Hearing...

Legal Notice

SEMINOLE COUNTY PLANNING AND ZONING COMMISSION... Notice of Public Hearing...

